

V&V Reference Report

L2 ASCDS Version : 7.6.7

Observation 59653 - L2 Version 002
Chandra X-Ray Center

L2 Processing Date: Mar 4 2006

Contents

1	Front	2
2	OBI	3
2.1	OBI	3
2.1.1	Images	3
2.1.2	Bias	3
2.1.3	Parameters	4
2.1.4	Events	4
2.2	Compared Parameters	5
2.3	Aspect	6
2.4	Star Slots	8
2.5	FID Slots	8
A	Summary	9
A.1	Status	9
A.2	Comments	9

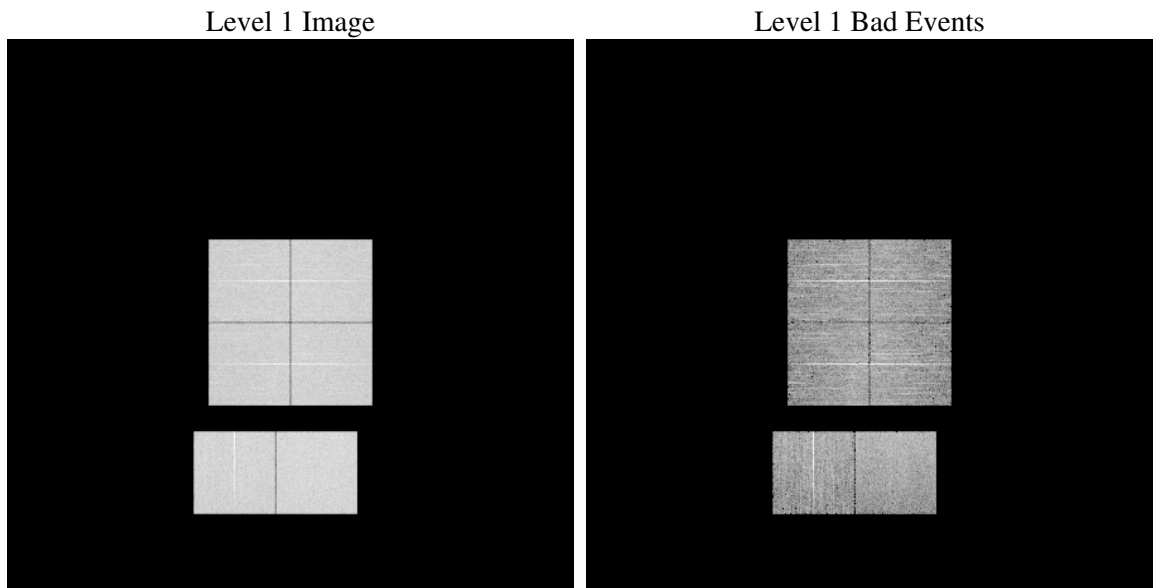
1 Front

seq_num	
obs_id	59653
title	ACIS-012367 diagnostics
observer	CHANDRA engineering request/realtime commanding
object	
dtcycle	0
cycle	P
ra_targ	0.0
dec_targ	0.0
ra_nom	266.97757097048
dec_nom	-13.98139589908
roll_nom	106.57783485254
revision	2
ontime	7801.5999709368
livetime	7702.8114145452
ontime0	7195.5389364362
ontime1	7380.2745516896
ontime2	6900.6110392213
ontime3	7150.6888640821
ontime6	7484.7138242424
ontime7	7801.5999709368
l2events	1050689

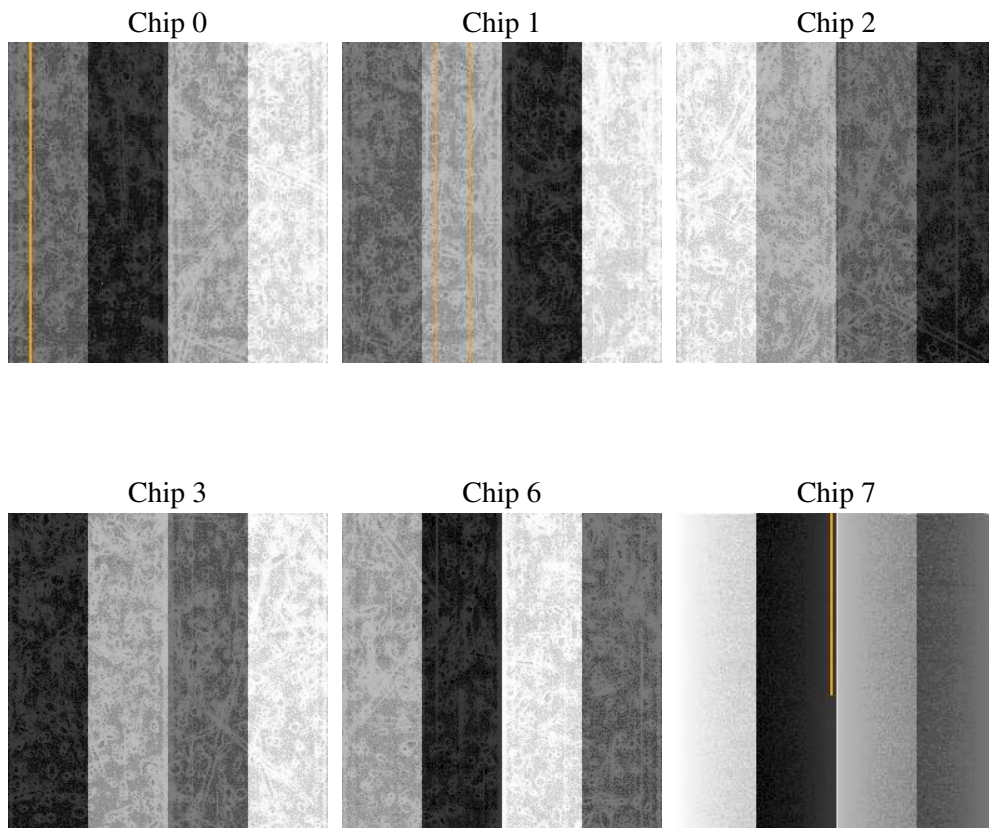
2 OBI

2.1 OBI

2.1.1 Images



2.1.2 Bias



2.1.3 Parameters

obi_num	2
ascdsver	7.6.7
caldsver	3.2.1
date	2006-03-04T07:21:06
revision	2

sched_exp_time	0.0
ontime	7804.3319056332
ontime0	7198.2708711326
ontime1	7383.0064863861
ontime2	6903.3429739177
ontime3	7152.8974865973
ontime6	7486.7172467709
ontime7	7804.3319056332
l1events	1405924

2.1.4 Events

	ccd 0	ccd 1	ccd 2	ccd 3	ccd 6	ccd 7
level 1 events	225099	230245	219891	227130	243955	259604
rejected events	48119	47923	48586	49474	51223	55423
rejected %	21%	20%	22%	21%	20%	21%

	ccd 0	ccd 1	ccd 2	ccd 3	ccd 6	ccd 7
grade 0 events	97058	99644	95239	99311	103661	34327
	43%	43%	43%	43%	42%	13%
grade 1 events	530	499	594	620	551	92
	0%	0%	0%	0%	0%	0%
grade 2 events	31003	32439	29087	30479	33289	62327
	13%	14%	13%	13%	13%	24%
grade 3 events	11613	11527	11138	11595	12450	14368
	5%	5%	5%	5%	5%	5%
grade 4 events	11357	11585	11286	11542	11946	13853
	5%	5%	5%	5%	4%	5%
grade 5 events	2984	3126	2854	3235	3284	6338
	1%	1%	1%	1%	1%	2%
grade 6 events	26026	27215	24641	24805	31485	79392
	11%	11%	11%	10%	12%	30%
grade 7 events	44528	44210	45052	45543	47289	48907
	19%	19%	20%	20%	19%	18%

2.2 Compared Parameters

Parameter	Planned	Actual	Parameter	Planned	Actual
Instrument	ACIS	ACIS	Obspar format version number	6	6
Detector	ACIS-012367	ACIS-012367	Obspar file type	PREDICTED	ACTUAL
Grating	NONE	NONE	Obspar update status	NONE	UPDATED
Data mode	FAINT	FAINT	On-chip summing requested	N	N
Observation mode	SECONDARY	SECONDARY	Subarray requested	NONE	NONE
Pointing RA	0	266.9775709704809	Alternating exposures requested	N	N
Pointing Dec	0	-13.9813958990802	Primary exposure time	3.2	3.2
Pointing Roll	0.0	106.5778348525376			
SIM focus pos (mm)	-0.782348	-1.428180813131781			
SIM defocus (mm)	0	0.1051558262725154			
SIM translation stage pos (mm)	-233.592463	250.466033080201			
SIM translation stage offset (mm)	0	-0.01005468664627074			
Observation start time	233020937.885248	233020936.8603			
Observation start date	2005-05-21T00:02:18	2005-05-21T00:02:16			
Observation end time	233041339.486175	233041338.46123			
Observation end date	2005-05-21T05:42:19	2005-05-21T05:42:18			
Read mode	TIMED	TIMED			

2.3 Aspect

2.4 Star Slots

2.5 FID Slots

A Summary

A.1 Status

V&V Scientist	Beth Sundheim
V&V Date (YYYY-MM-DD)	2006.03.05
V&V Edition	1
V&V Disposition and Status	OK
V&V Charge Time	7.80159997

A.2 Comments