

V&V Reference Report

L2 ASCDS Version : 10.9.1

Observation 5943 - L2 Version 4
Chandra X-Ray Center

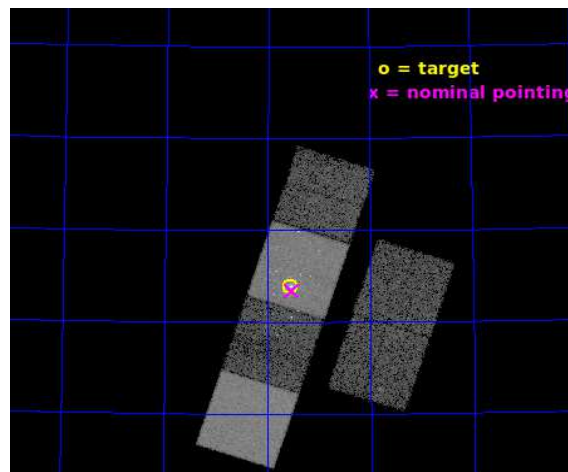
L2 Processing Date : Oct 8 2020

Contents

1	Front	2
2	OBI	3
2.1	OBI	3
2.1.1	Images	3
2.1.2	Bias	3
2.1.3	Parameters	4
2.1.4	Events	4
2.2	Compared Parameters	5
2.3	Aspect	6
2.4	Star Slots	9
2.4.1	Slot 3	9
2.4.2	Slot 4	10
2.4.3	Slot 5	11
2.4.4	Slot 6	12
2.4.5	Slot 7	13
2.5	FID Slots	14
2.5.1	Slot 0	14
2.5.2	Slot 1	15
2.5.3	Slot 2	16
A	Summary	17
A.1	Status	17
A.2	Comments	17

1 Front

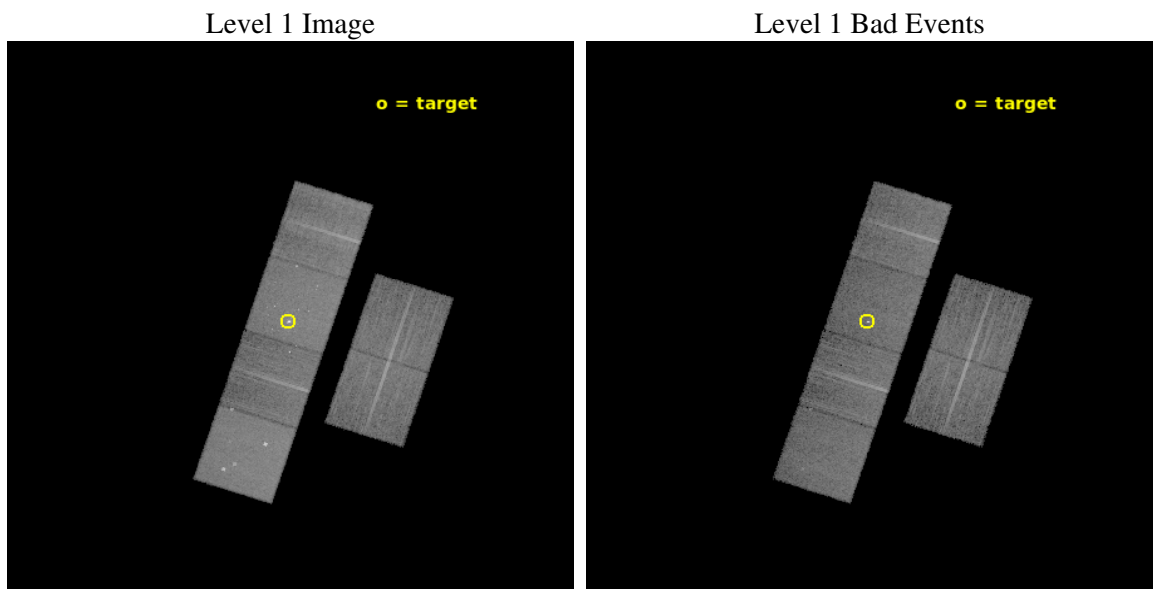
seq_num	600462	Sequence number
obs_id	5943	Observation id
title	An Unprecedented View of a Galaxy's Dynamic X-ray Source Population	
observer	David Pooley	Principal investigator
object	M81	Source name
dtcycle	0	
cycle	P	events from which exps? Prim/Second/Both
ra_targ	148.888333	Observer's specified target RA [deg]
dec_targ	69.065306	Observer's specified target Dec [deg]
ra_nom	148.882081632	Nominal RA [deg]
dec_nom	69.056880540685	Nominal Dec [deg]
roll_nom	288.10387507214	Nominal Roll [deg]
revision	4	Processing version of data
ontime	12166.399954677	Sum of GTIs [s]
livetime	12012.341672724	Livetime [s]
ontime2	12166.399954677	Sum of GTIs [s]
ontime3	12166.399954677	Sum of GTIs [s]
ontime5	12166.399954677	Sum of GTIs [s]
ontime6	12166.399954677	Sum of GTIs [s]
ontime7	12166.399954677	Sum of GTIs [s]
ontime8	12166.399954677	Sum of GTIs [s]
l2events	159037	Number of level 2 events



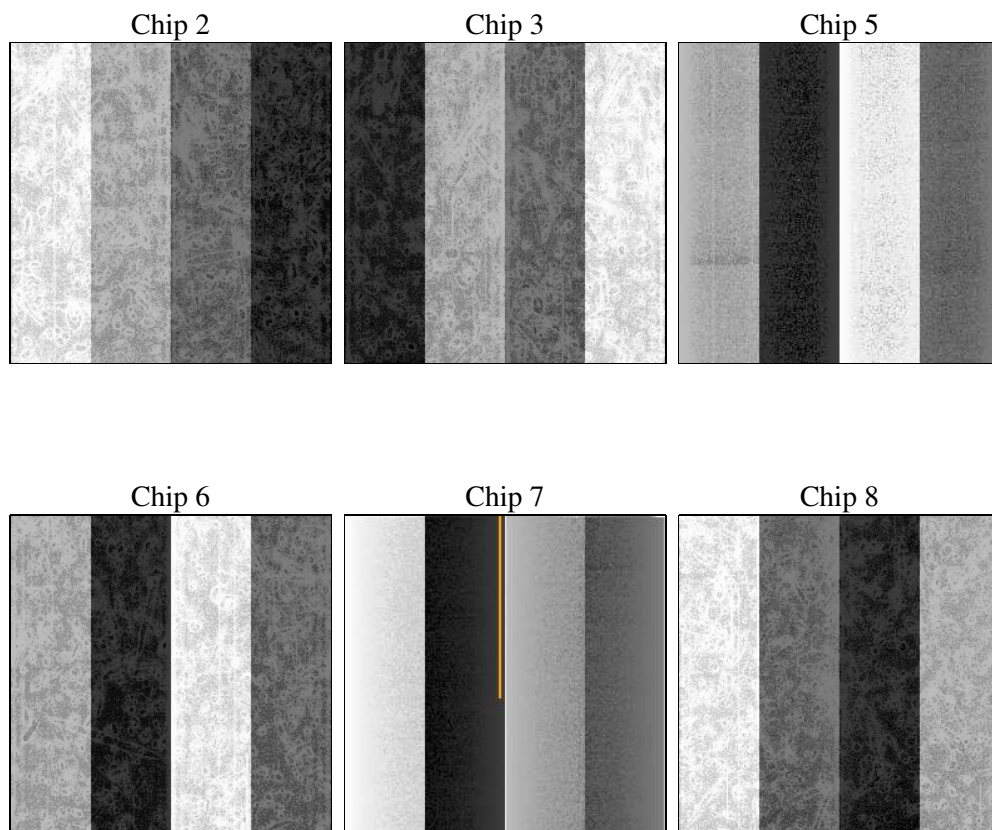
2 OBI

2.1 OBI

2.1.1 Images



2.1.2 Bias



2.1.3 Parameters

obi_num	0	Obi number	sched_exp_time	12000.000000	[s] Scheduled observation exposure time
ascdsver	10.9.1	Processing system revision	ontime	12166.399954677	Sum of GTIs [s]
caldsver	4.9.2	 	ontime2	12166.399954677	Sum of GTIs [s]
date	2020-10-09T00:41:15	Date and time of file creation	ontime3	12166.399954677	Sum of GTIs [s]
revision	4	Processing version of data	ontime5	12166.399954677	Sum of GTIs [s]
			ontime6	12166.399954677	Sum of GTIs [s]
			ontime7	12166.399954677	Sum of GTIs [s]
			ontime8	12166.399954677	Sum of GTIs [s]
			l1events	677599	Number of level 1 events

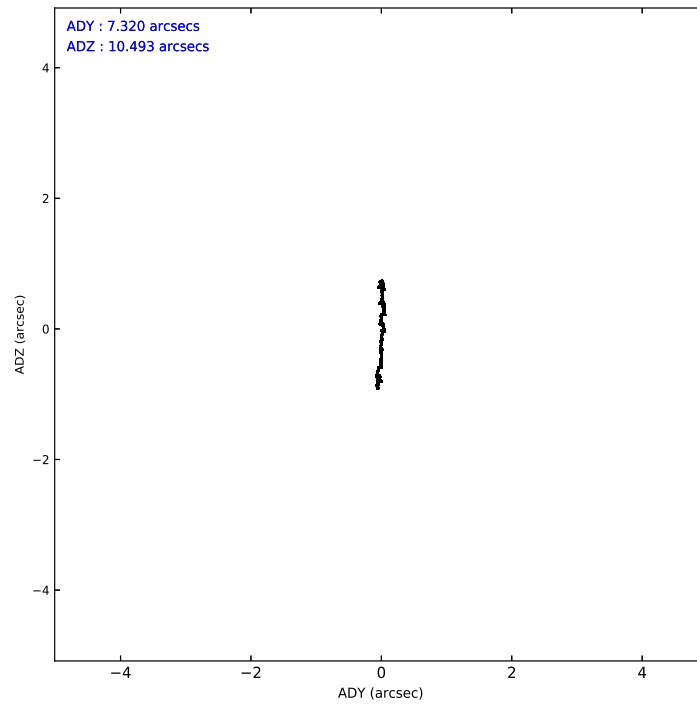
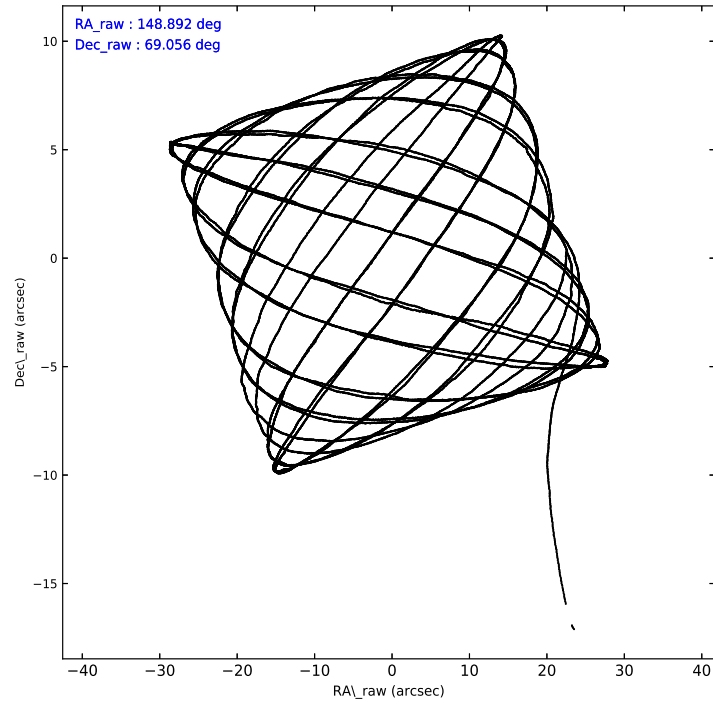
2.1.4 Events

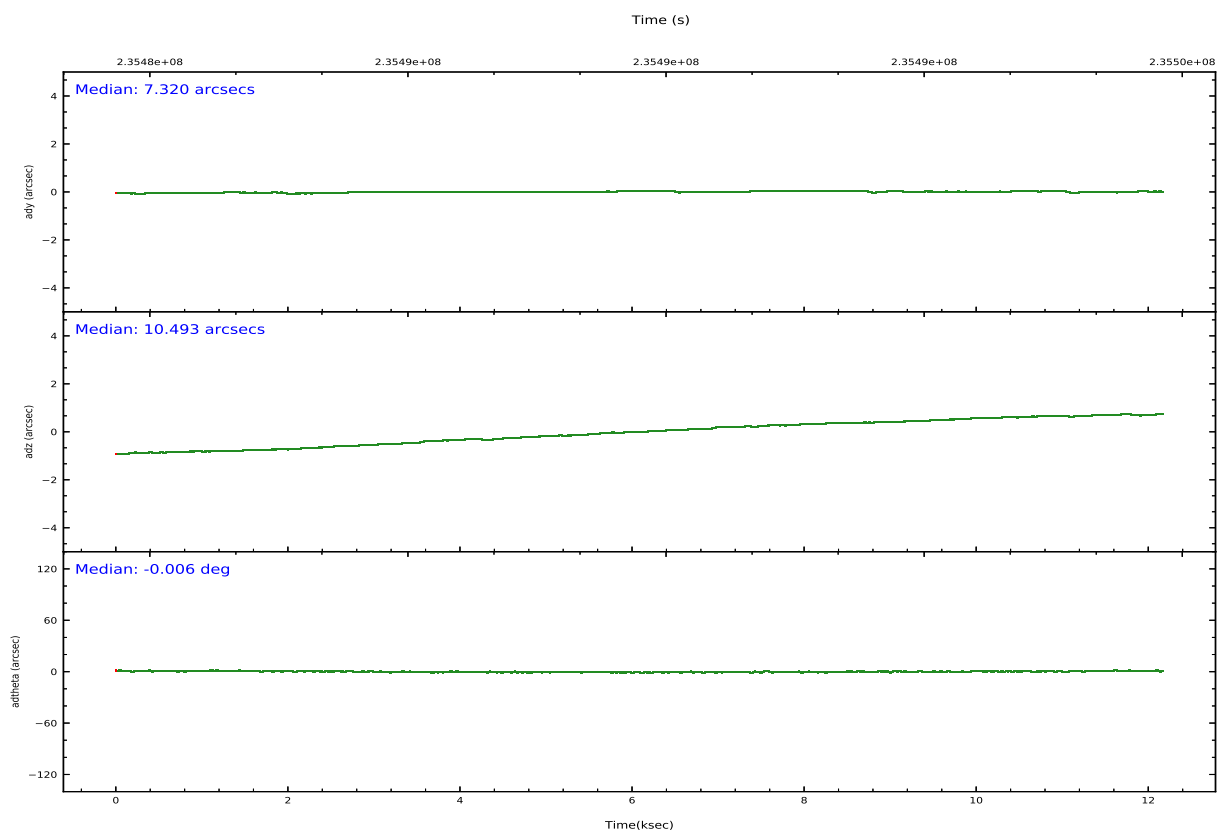
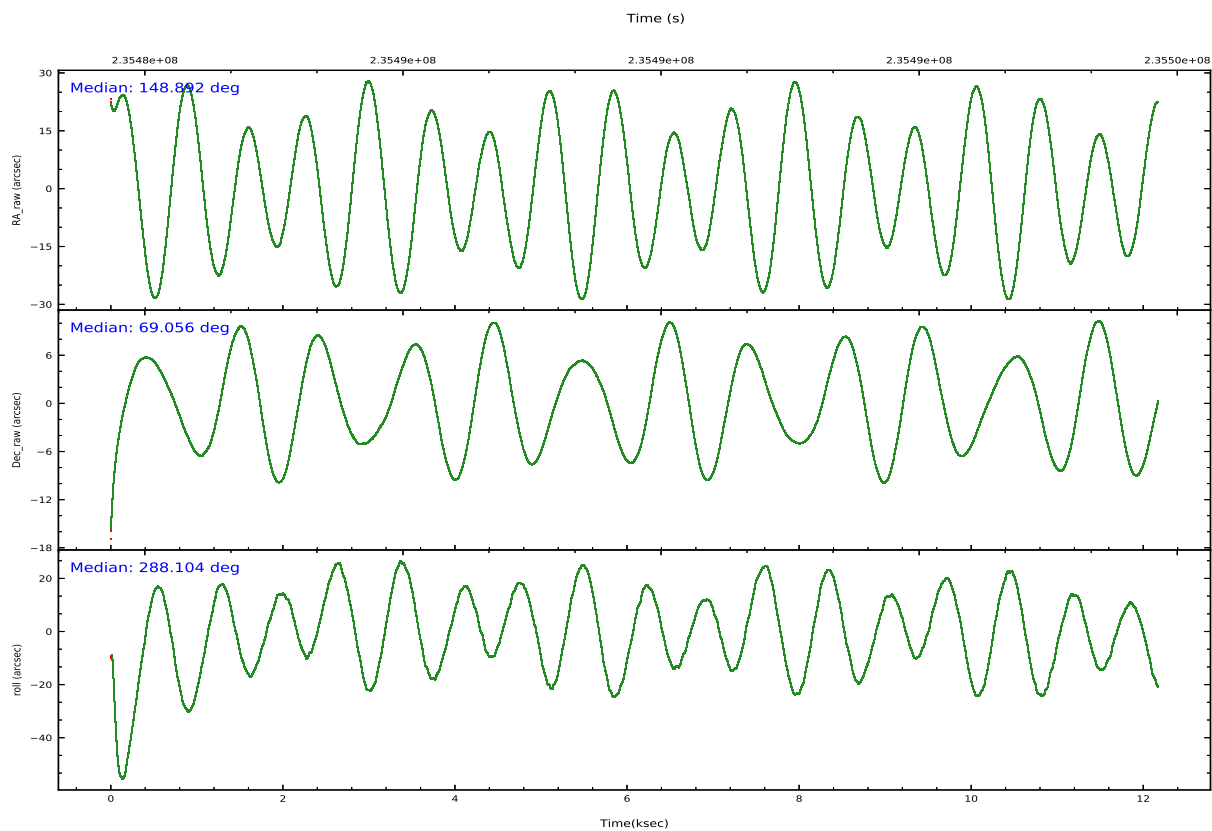
	ccd 2	ccd 3	ccd 5	ccd 6	ccd 7	ccd 8		ccd 2	ccd 3	ccd 5	ccd 6	ccd 7	ccd 8
level 1 events	94209	91825	141496	94417	138084	117568	grade 0 events	5131	4639	8445	6100	7040	8552
rejected events	82782	81284	76140	81269	77367	90892		5%	5%	5%	6%	5%	7%
rejected %	87%	88%	53%	86%	56%	77%	grade 1 events	57	59	382	86	222	88
								0%	0%	0%	0%	0%	0%
							grade 2 events	2320	2029	19160	2556	12684	5856
								2%	2%	13%	2%	9%	4%
							grade 3 events	1045	992	2432	1137	5490	2928
								1%	1%	1%	1%	3%	2%
							grade 4 events	1057	1037	2460	1180	5495	2621
								1%	1%	1%	1%	3%	2%
							grade 5 events	3736	4103	10017	4458	12503	5805
								3%	4%	7%	4%	9%	4%
							grade 6 events	1977	1952	33432	2278	30495	6939
								2%	2%	23%	2%	22%	5%
							grade 7 events	78886	77014	65168	76622	64155	84779
								83%	83%	46%	81%	46%	72%

2.2 Compared Parameters

Parameter	Planned	Actual	Parameter	Planned	Actual
Instrument	ACIS	ACIS	Obspar version number	8	8
Detector	ACIS-235678	ACIS-235678	Obspar file type	PREDICTED	ACTUAL
Grating	NONE	NONE	Obspar update status	NONE	UPDATED
Data mode	FAINT	FAINT	Number of optional ACIS chips dropped	0	0
Observation mode	POINTING	POINTING	On-chip summing requested	N	N
[deg] Pointing RA	148.834673	148.882081632	Subarray requested	NONE	NONE
[deg] Pointing Dec	69.073618	69.056880540685	Alternating exposures requested	N	N
[deg] Pointing Roll	287.998695	288.10387507214	[s] Primary exposure time	0.000000	3.2
[mm] SIM focus pos	-0.684267	-0.6828225247311905			
[mm] SIM defocus	0	0.001444936568705701			
[mm] SIM translation stage pos	-190.132523	-190.1425803651734			
[mm] SIM translation stage offset	0	0.01005778216563158			
[s] Observation start time (MET)	235482778.184000	235481664.21005			
Observation start date	2005-06-18T11:51:54	2005-06-18T11:34:24			
[s] Observation end time (MET)	235494778.184000	235495750.78569			
Observation end date	2005-06-18T15:11:54	2005-06-18T15:29:10			
Read mode	TIMED	TIMED			

2.3 Aspect



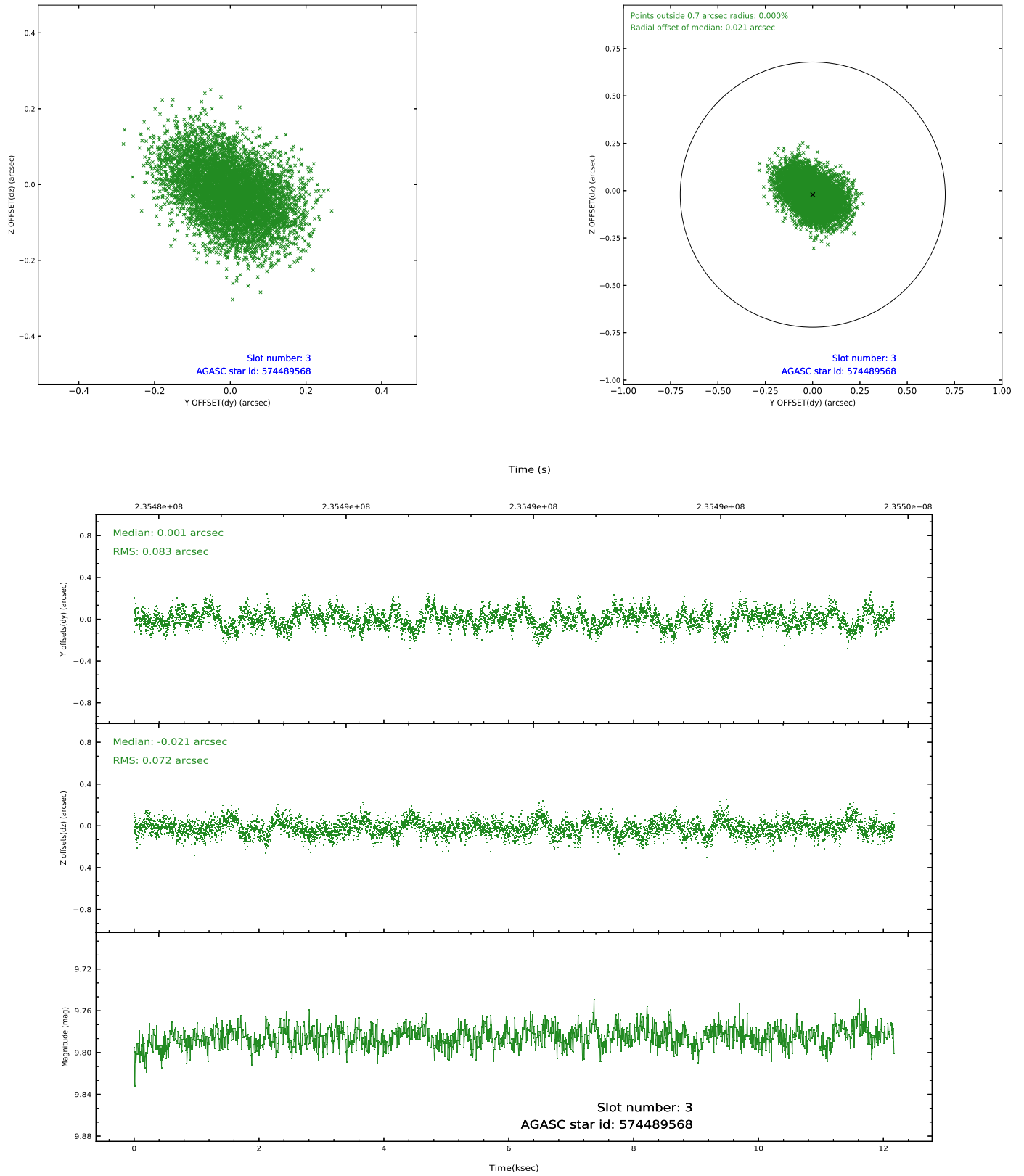


Slot Statistics

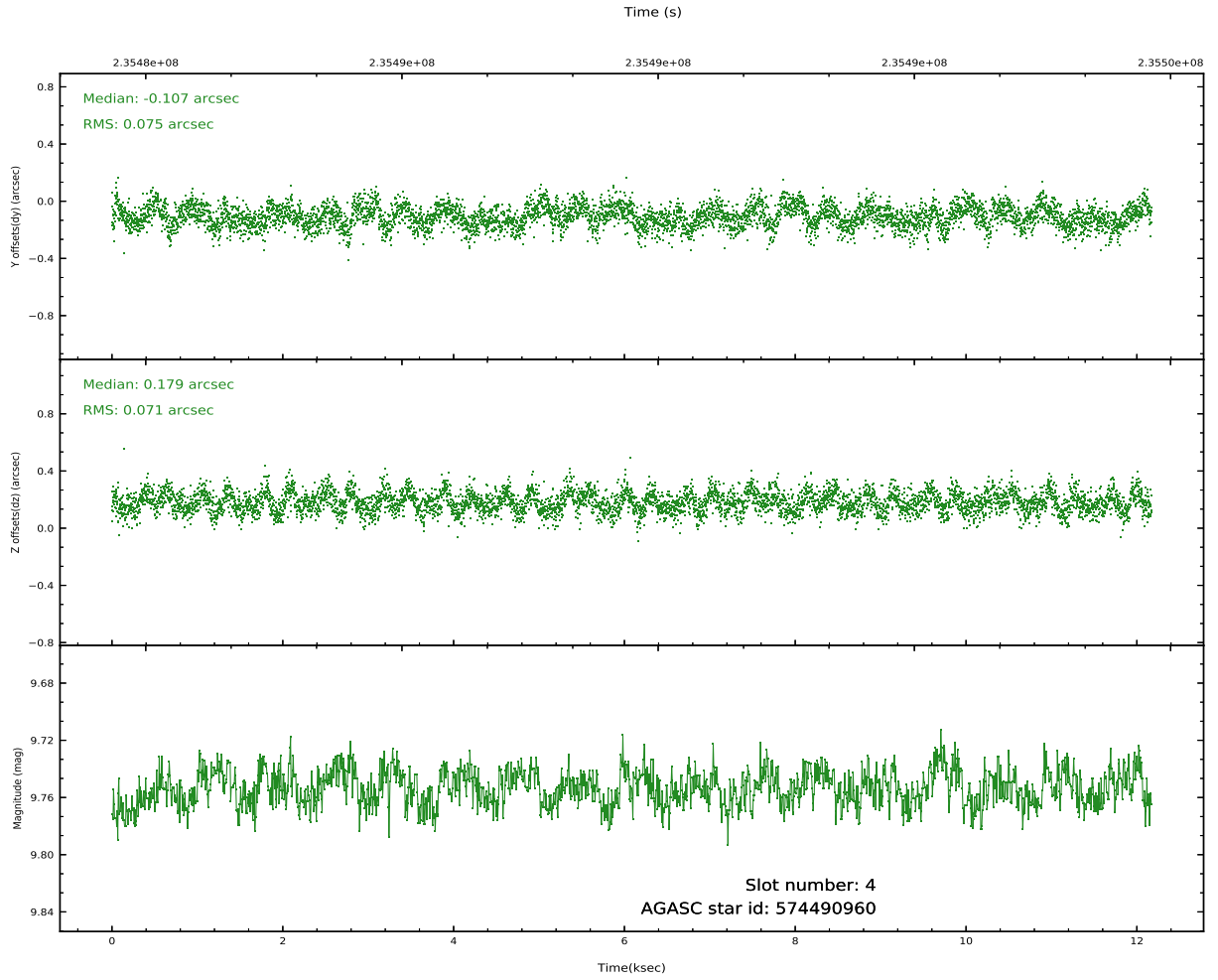
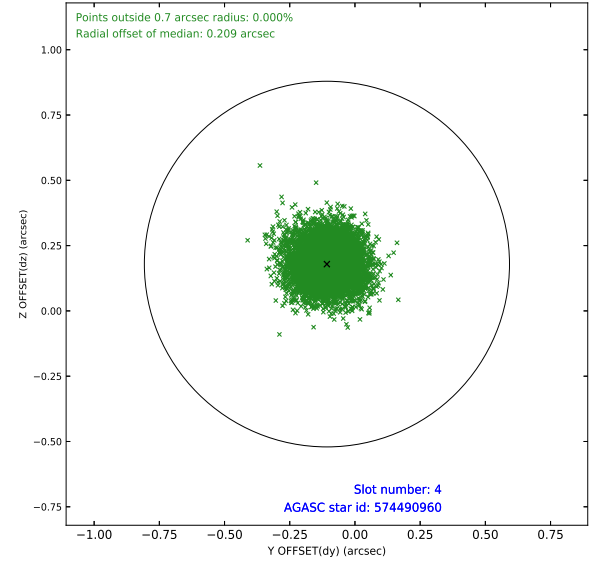
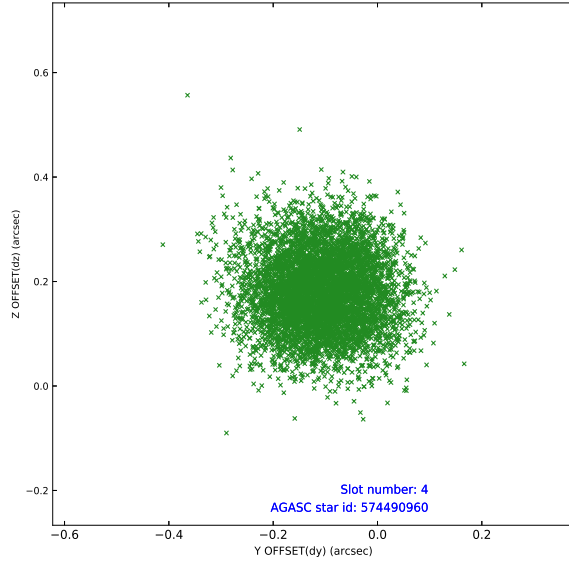
pt	status	used	id	mag	n_pts	frac_pts	med_dy	med_dz	dr1	dr2	ra	dec	mean_y	mea
0	FID		ACIS-S-2	7.10	2970	1.000	-0.080	-0.063	0.010	0.017	0.000000	0.000000	-760.09	-1731
1	FID		ACIS-S-4	7.21	2970	1.000	0.161	0.056	0.007	0.013	0.000000	0.000000	2153.17	176
2	FID		ACIS-S-5	7.23	2970	1.000	-0.112	0.017	0.008	0.014	0.000000	0.000000	-1812.51	170
3	GUIDE	used	574489568	9.79	5933	1.000	0.001	-0.021	0.117	0.195	147.223974	69.438157	-1902.17	-1522
4	GUIDE	used	574490960	9.75	5929	1.000	-0.107	0.179	0.110	0.177	148.185918	69.658768	-2258.17	-120
5	GUIDE	used	574491280	9.34	5936	1.000	-0.111	-0.085	0.080	0.129	148.611567	69.450135	-1376.39	150
6	GUIDE	used	574496312	10.27	5933	1.000	0.026	-0.044	0.163	0.267	149.547505	68.718299	1499.59	492
7	GUIDE	used	574497600	10.45	5923	1.000	0.187	-0.036	0.187	0.304	147.824120	68.451903	1706.51	-1958

2.4 Star Slots

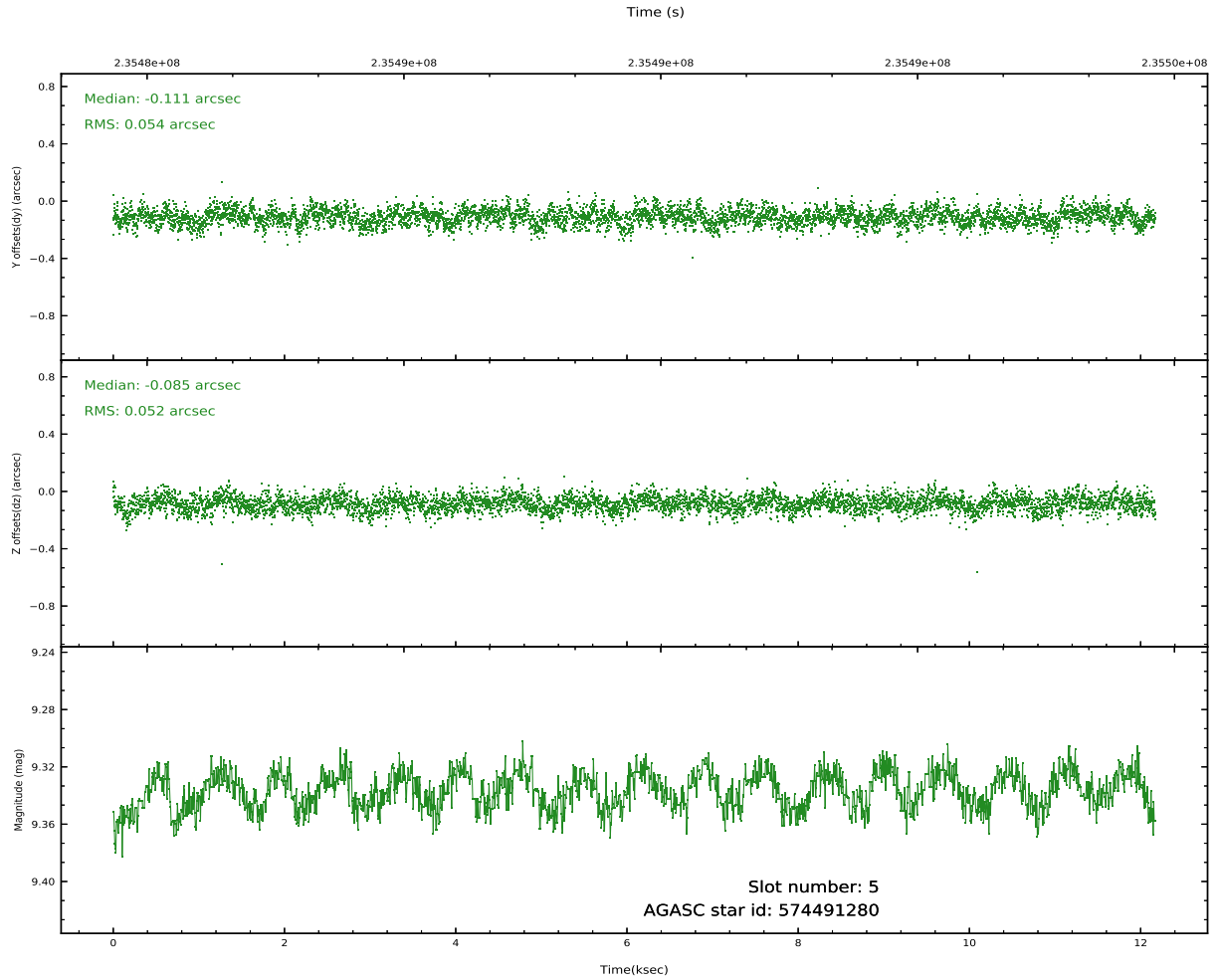
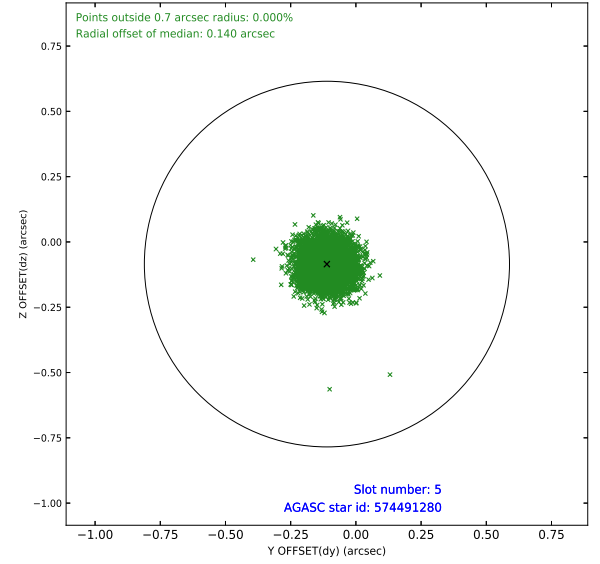
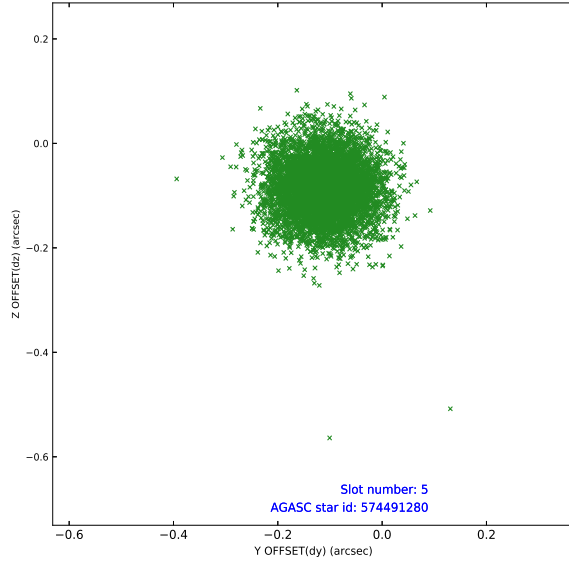
2.4.1 Slot 3



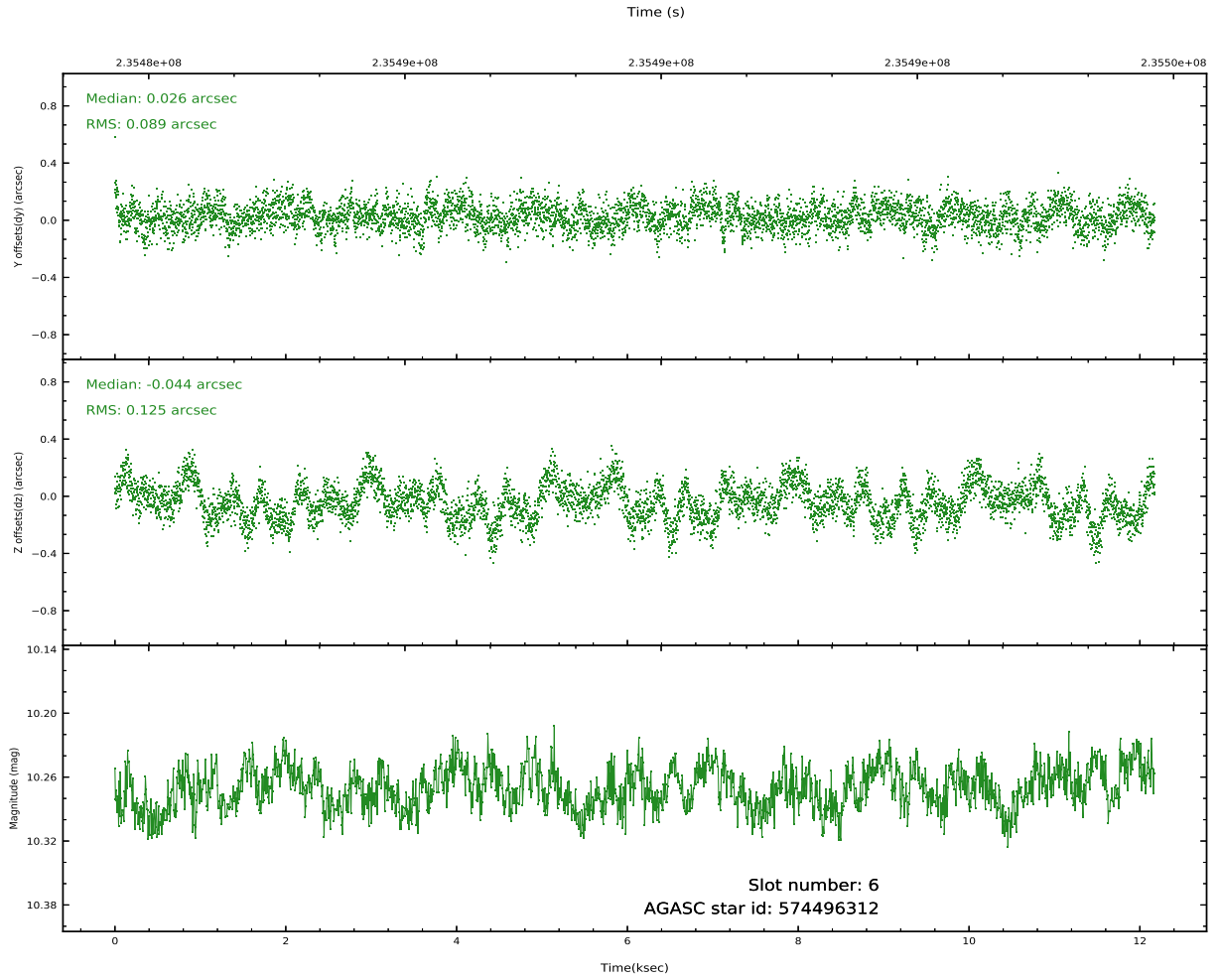
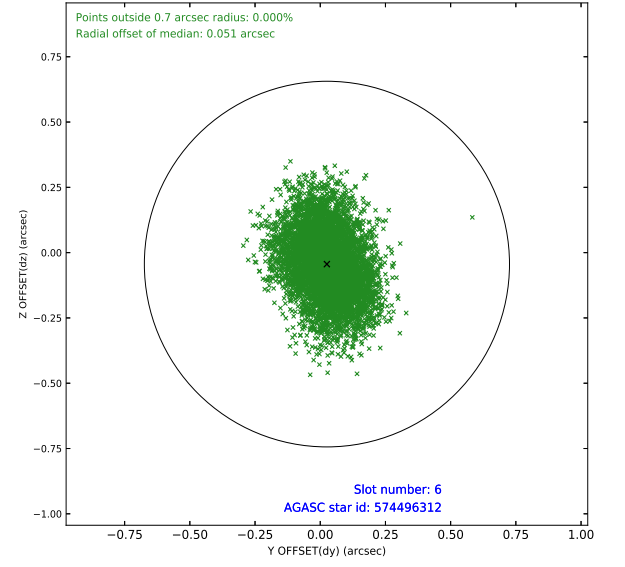
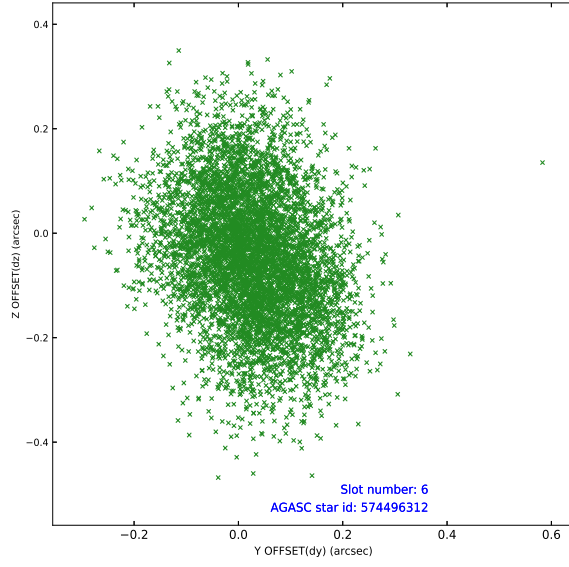
2.4.2 Slot 4



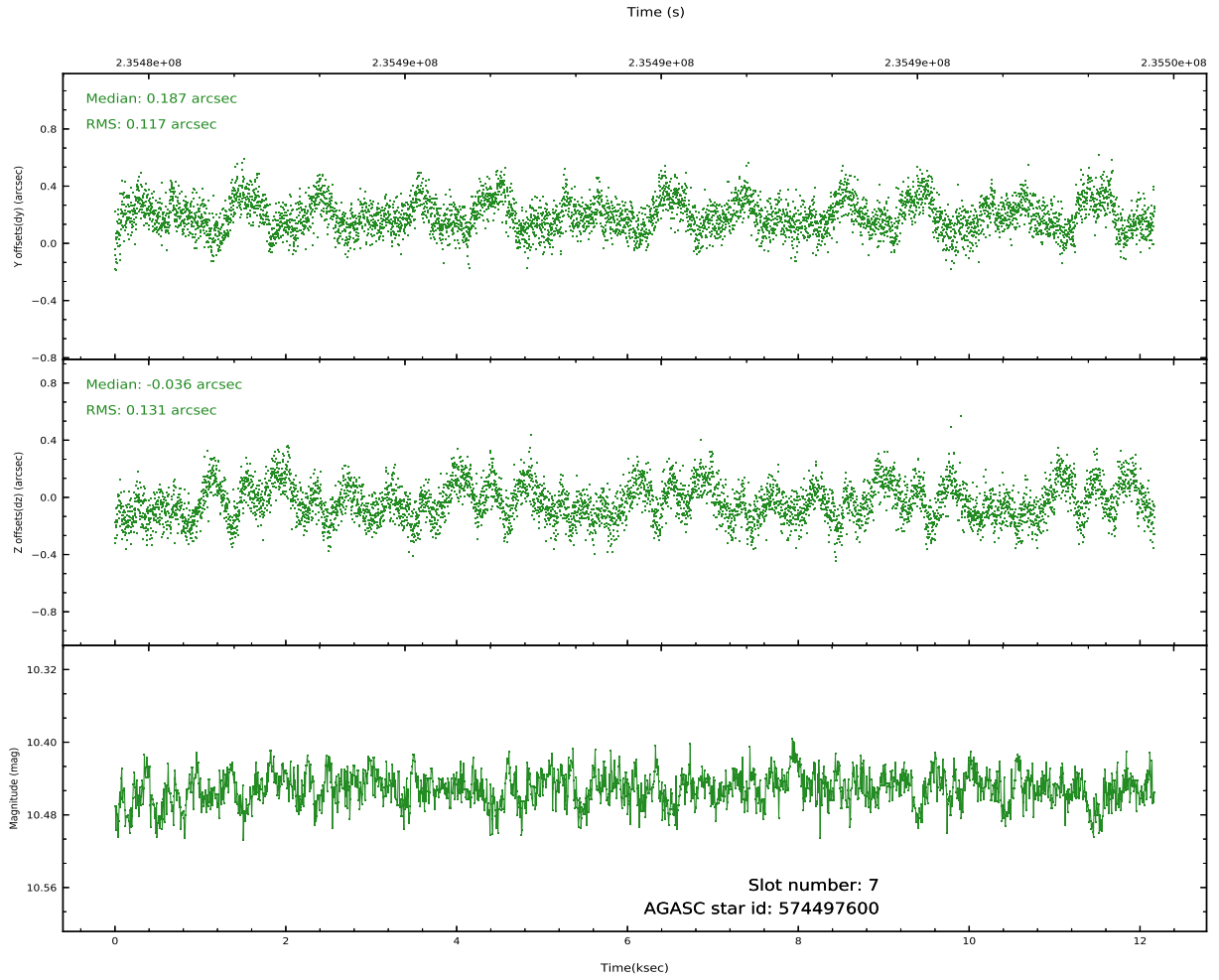
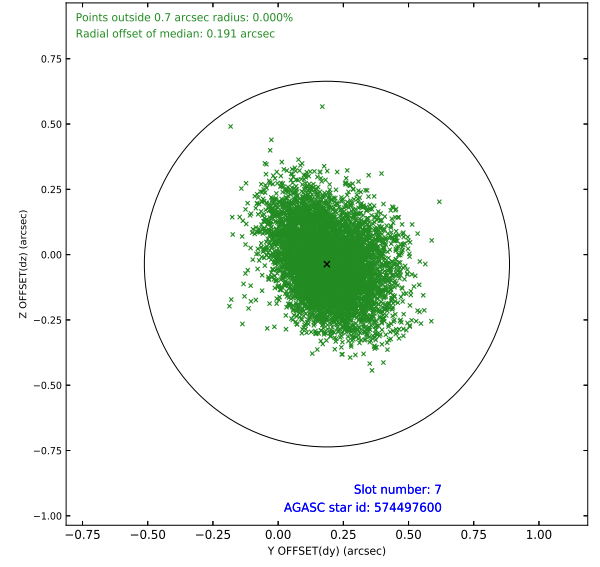
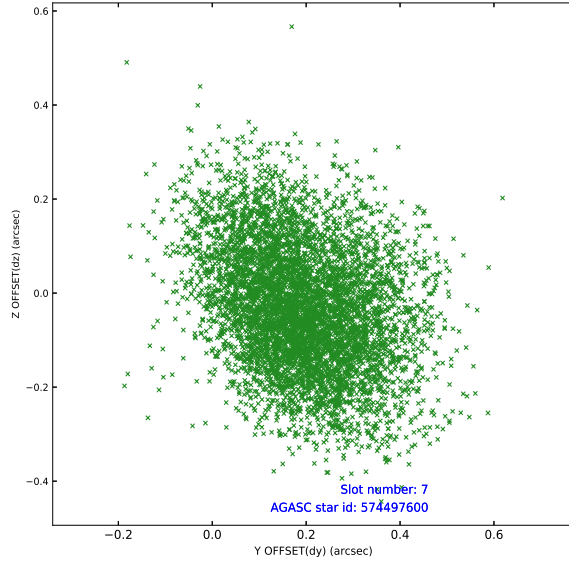
2.4.3 Slot 5



2.4.4 Slot 6

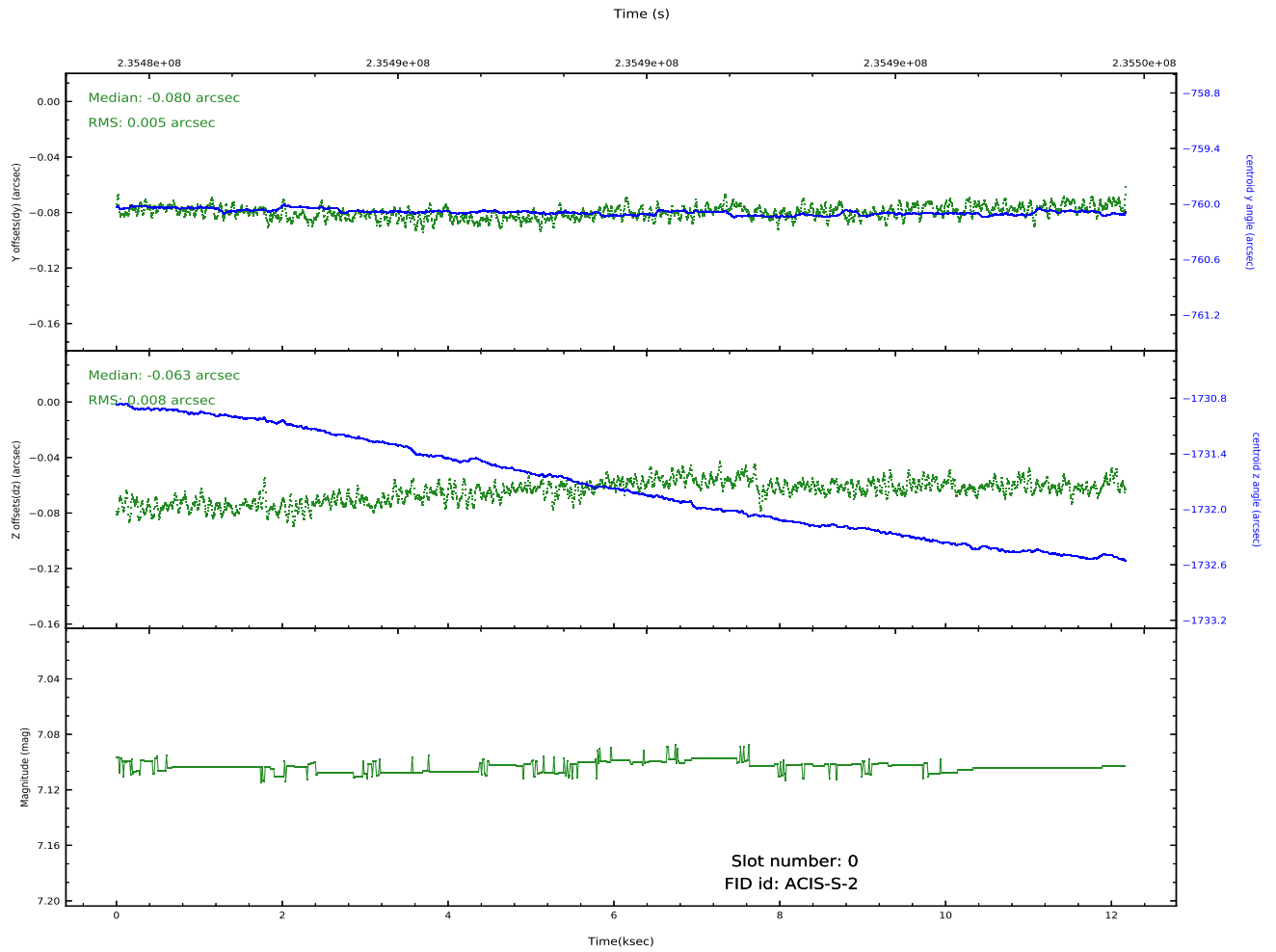
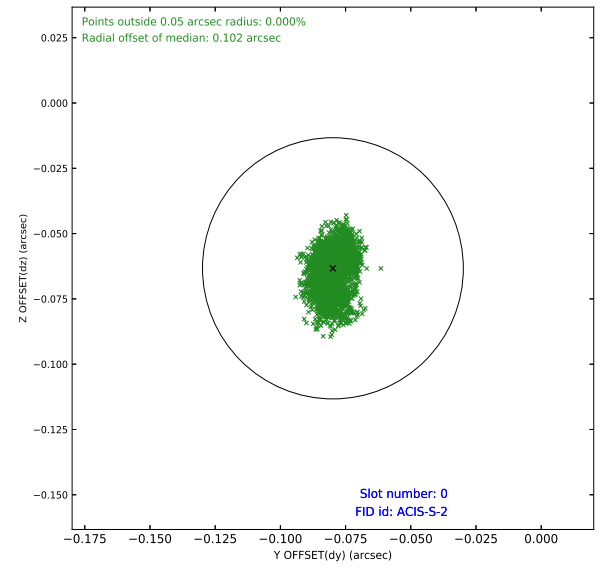
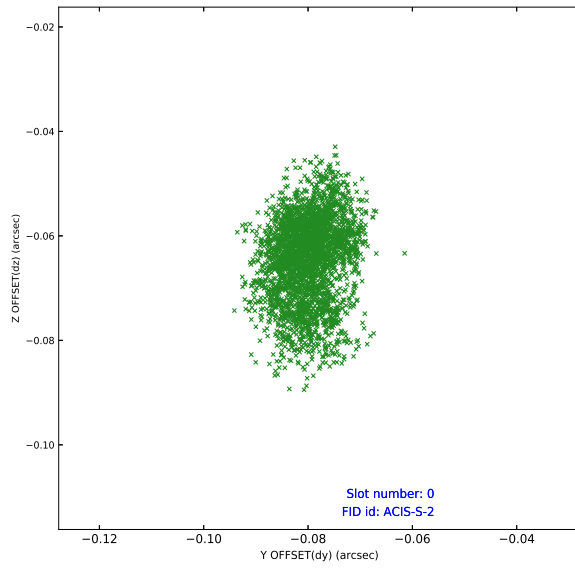


2.4.5 Slot 7

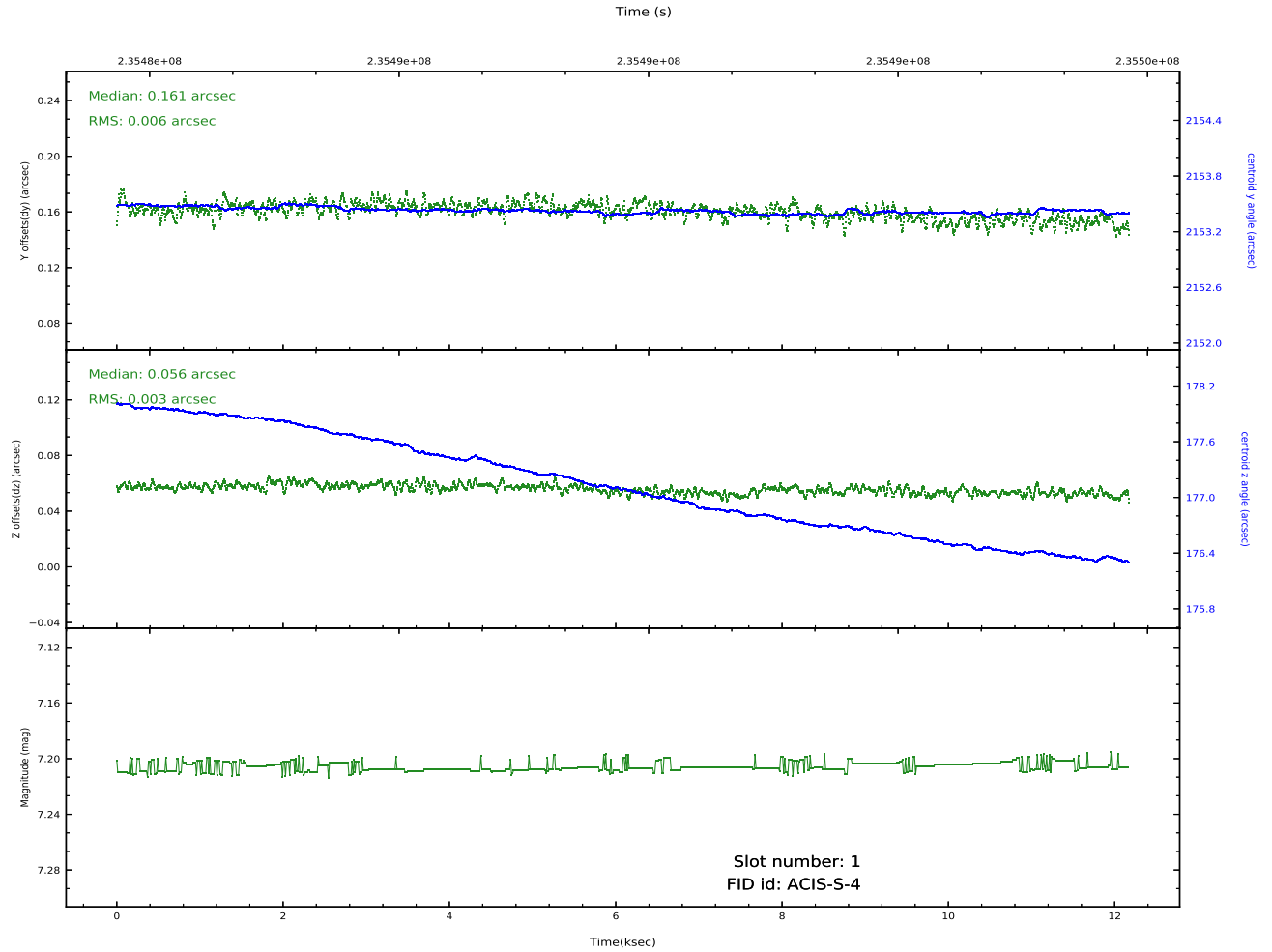
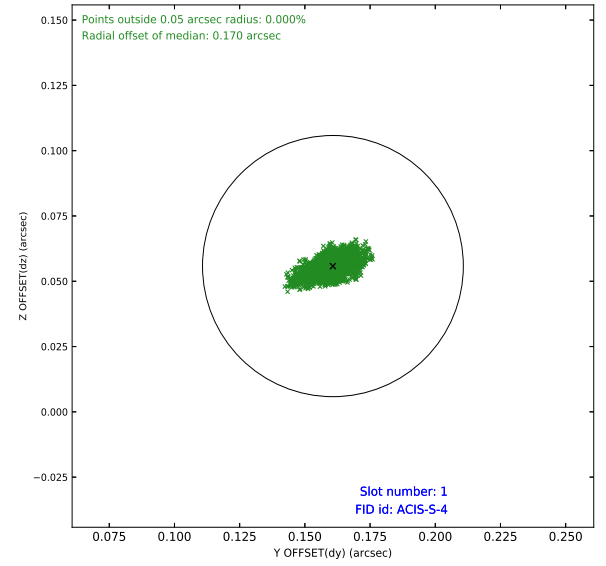
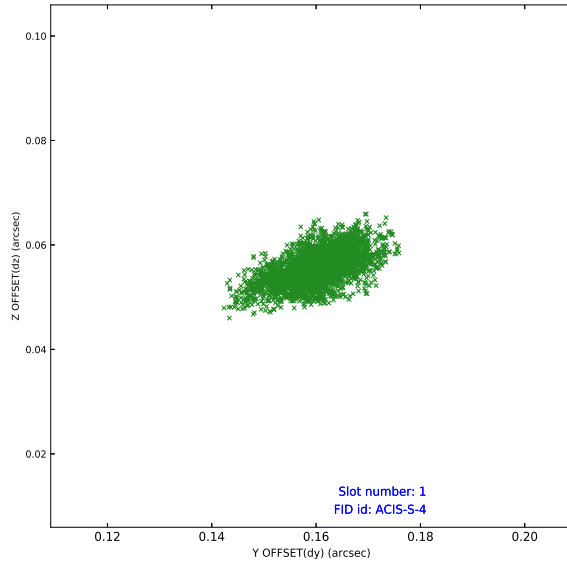


2.5 FID Slots

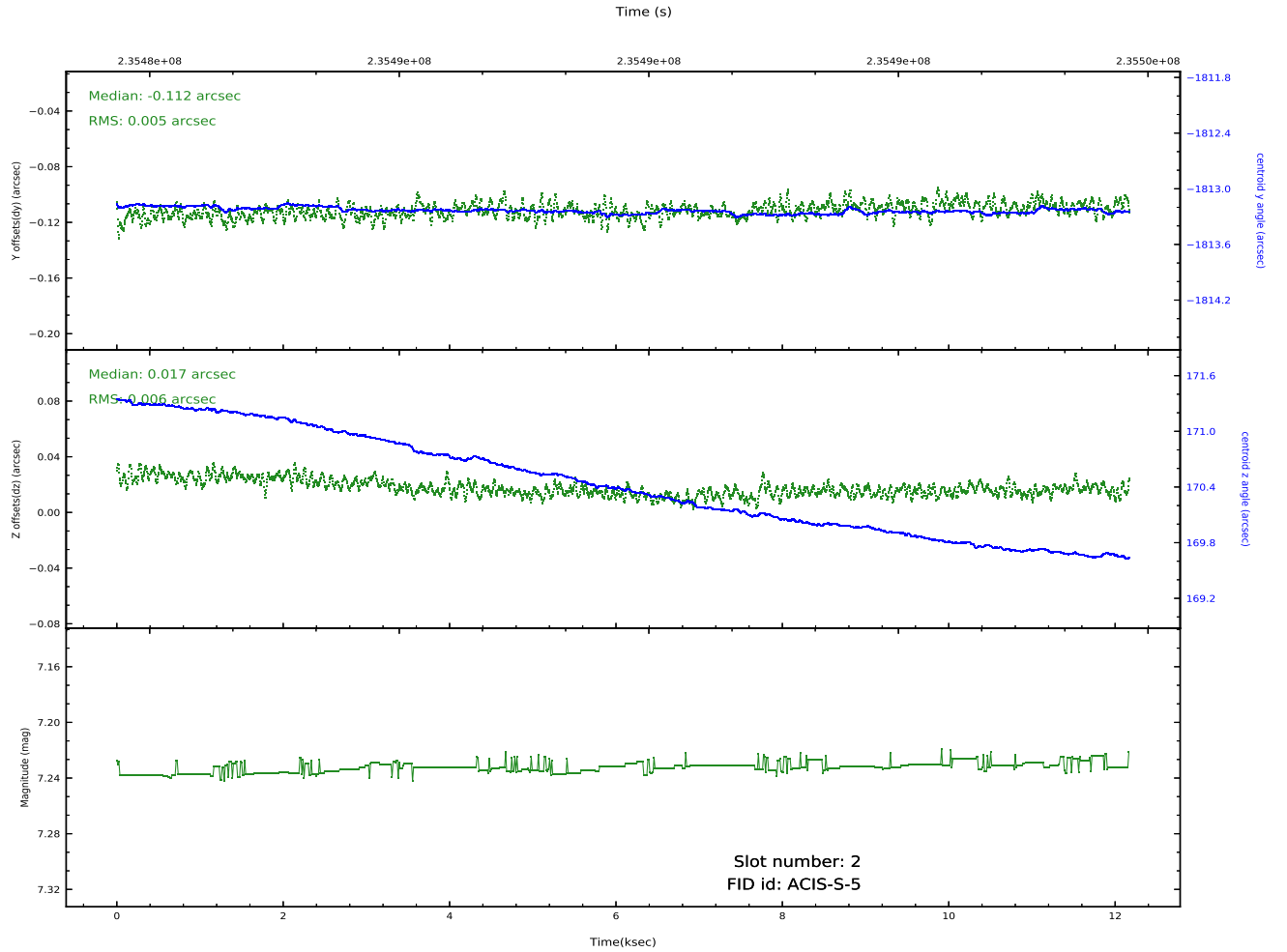
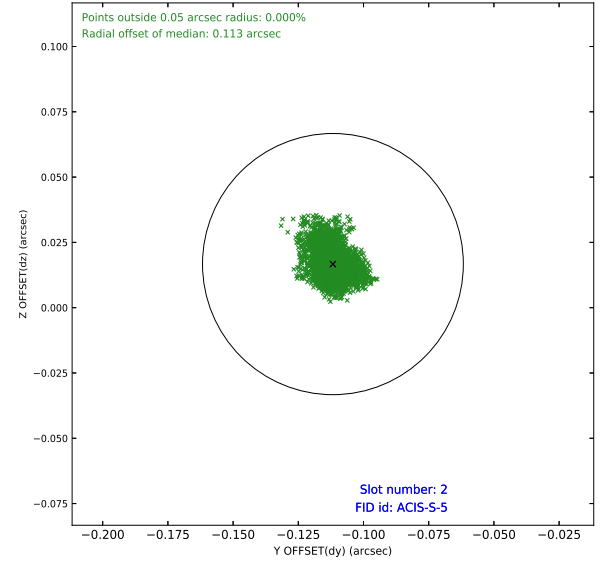
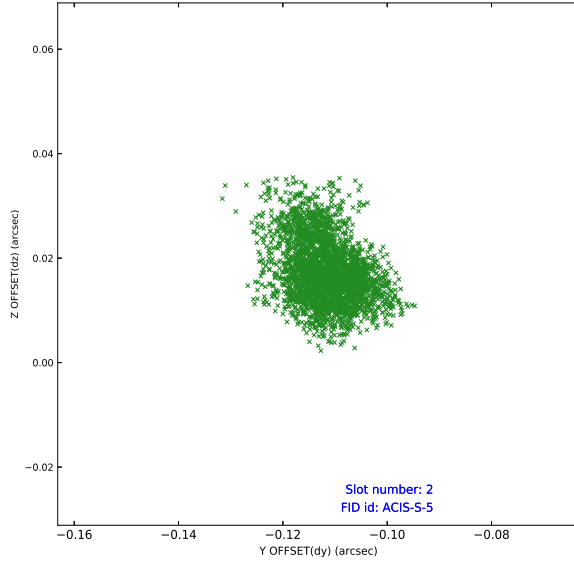
2.5.1 Slot 0



2.5.2 Slot 1



2.5.3 Slot 2



A Summary

A.1 Status

V&V Scientist	Beth Sundheim
V&V Date (YYYY-MM-DD)	2020.10.09
V&V Edition	1
V&V Disposition and Status	OK
V&V Charge Time	12.16639

A.2 Comments