

# V&V Reference Report

## L2 ASCDS Version : 7.6.7.1

Observation 59383 - L2 Version 002  
Chandra X-Ray Center

L2 Processing Date : Apr 2 2006

## Contents

<b>1</b>	<b>Front</b>	<b>2</b>
<b>2</b>	<b>OBI</b>	<b>3</b>
2.1	OBI . . . . .	3
2.1.1	Images . . . . .	3
2.1.2	Bias . . . . .	3
2.1.3	Parameters . . . . .	4
2.1.4	Events . . . . .	4
2.2	Compared Parameters . . . . .	5
2.3	Aspect . . . . .	6
2.4	Star Slots . . . . .	8
2.5	FID Slots . . . . .	8
<b>A</b>	<b>Summary</b>	<b>9</b>
A.1	Status . . . . .	9
A.2	Comments . . . . .	9

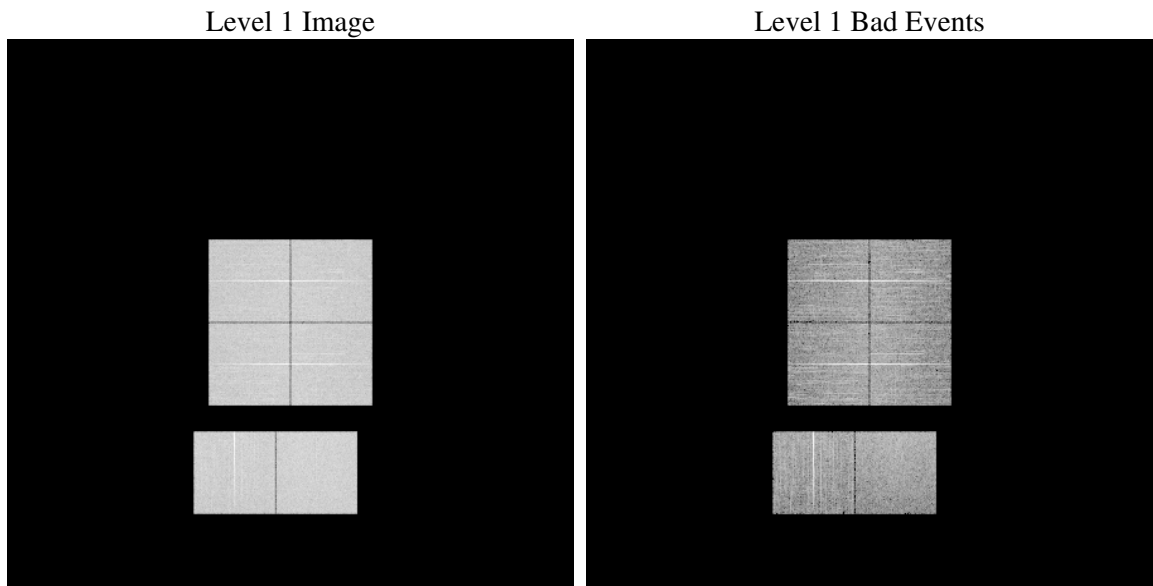
# 1 Front

seq_num	&#160
obs_id	59383
title	ACIS-012367 diagnostics
observer	CHANDRA engineering request/realtime commanding
object	&#160
dtcycle	0
cycle	P
ra_targ	0.0
dec_targ	0.0
ra_nom	15.57502083227
dec_nom	36.57962772079
roll_nom	192.57469125664
revision	2
ontime	8284.7999691367
livetime	8179.8928434199
ontime0	8284.7999691367
ontime1	8284.7999691367
ontime2	8284.7999691367
ontime3	8284.7999691367
ontime6	8284.7999691367
ontime7	8284.7999691367
l2events	1052381

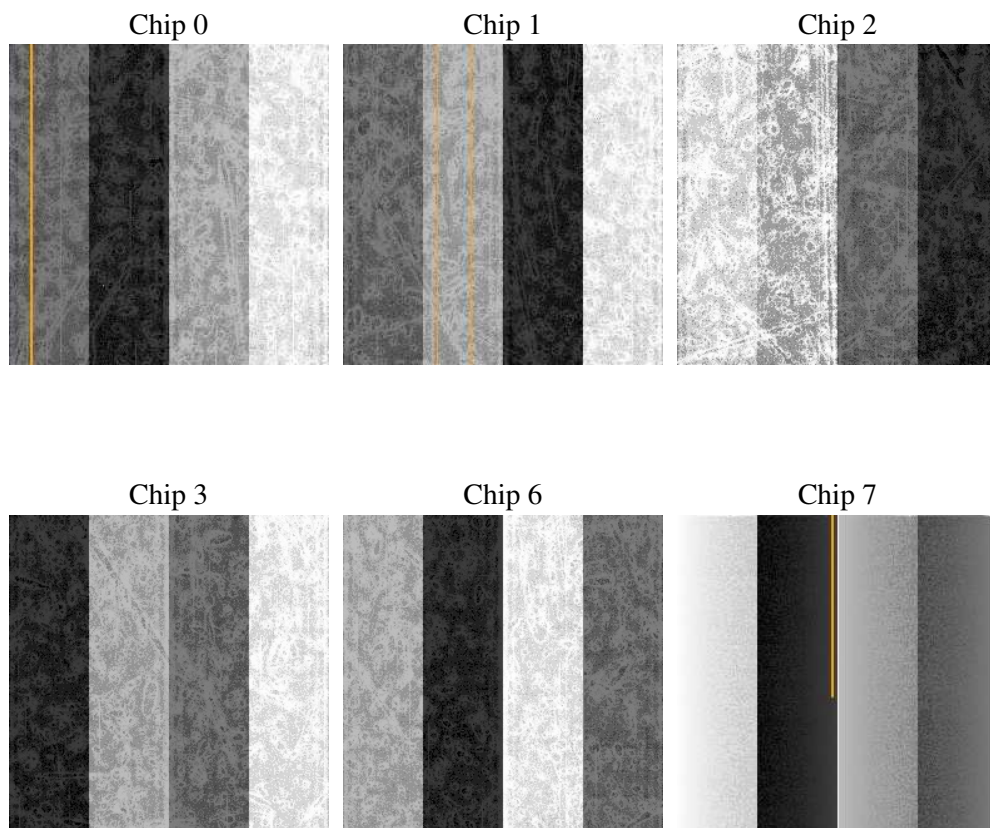
## 2 OBI

### 2.1 OBI

#### 2.1.1 Images



#### 2.1.2 Bias



### 2.1.3 Parameters

obi_num	0
ascdsver	7.6.7.1
caldsver	3.2.1
date	2006-04-02T23:00:40
revision	2

sched_exp_time	0.0
ontime	8287.2514115572
ontime0	8287.2514115572
ontime1	8287.2514115572
ontime2	8287.2514115572
ontime3	8287.2514115572
ontime6	8287.2514115572
ontime7	8287.2514115572
l1events	1478570

### 2.1.4 Events

	ccd 0	ccd 1	ccd 2	ccd 3	ccd 6	ccd 7
level 1 events	237503	240080	244119	243827	252219	260822
rejected events	58471	60400	62685	62186	63819	62954
rejected %	24%	25%	25%	25%	25%	24%

	ccd 0	ccd 1	ccd 2	ccd 3	ccd 6	ccd 7
grade 0 events	98054	97410	100791	101648	102047	32069
	41%	40%	41%	41%	40%	12%
grade 1 events	627	508	668	650	542	112
	0%	0%	0%	0%	0%	0%
grade 2 events	31405	32433	30756	30806	32494	60313
	13%	13%	12%	12%	12%	23%
grade 3 events	11660	11468	12014	12002	11668	13424
	4%	4%	4%	4%	4%	5%
grade 4 events	11779	11539	11955	11821	11818	13385
	4%	4%	4%	4%	4%	5%
grade 5 events	3560	3735	3372	3801	3883	7150
	1%	1%	1%	1%	1%	2%
grade 6 events	26195	26896	25991	25434	30443	78738
	11%	11%	10%	10%	12%	30%
grade 7 events	54223	56091	58572	57665	59324	55631
	22%	23%	23%	23%	23%	21%

## 2.2 Compared Parameters

Parameter	Planned	Actual	Parameter	Planned	Actual
Instrument	ACIS	ACIS	Obspar format version number	6	6
Detector	ACIS-012367	ACIS-012367	Obspar file type	PREDICTED	ACTUAL
Grating	NONE	NONE	Obspar update status	NONE	UPDATED
Data mode	FAINT	FAINT	On-chip summing requested	N	N
Observation mode	SECONDARY	SECONDARY	Subarray requested	NONE	NONE
Pointing RA	0	15.5750208322703	Alternating exposures requested	N	N
Pointing Dec	0	36.57962772078958	Primary exposure time	3.2	3.2
Pointing Roll	0.0	192.5746912566367			
SIM focus pos (mm)	-0.782348	-0.7809083437167272			
SIM defocus (mm)	0	0.7524282956875696			
SIM translation stage pos (mm)	-233.592463	250.466033080201			
SIM translation stage offset (mm)	0	-0.01005468664627074			
Observation start time	245858731.373475	245858730.34848			
Observation start date	2005-10-16T14:05:31	2005-10-16T14:05:30			
Observation end time	245880043.174456	245880042.14946			
Observation end date	2005-10-16T20:00:43	2005-10-16T20:00:42			
Read mode	TIMED	TIMED			

## 2.3 Aspect



## **2.4 Star Slots**

## **2.5 FID Slots**



## A Summary

### A.1 Status

V&V Scientist	Jen Lauer
V&V Date (YYYY-MM-DD)	2006.04.03
V&V Edition	1
V&V Disposition and Status	OK
V&V Charge Time	8.28479996

### A.2 Comments