

# V&V Reference Report

## L2 ASCDS Version : 7.6.7.1

Observation 59343 - L2 Version 002  
Chandra X-Ray Center

L2 Processing Date : Apr 5 2006

## Contents

<b>1</b>	<b>Front</b>	<b>2</b>
<b>2</b>	<b>OBI</b>	<b>3</b>
2.1	OBI . . . . .	3
2.1.1	Images . . . . .	3
2.1.2	Bias . . . . .	3
2.1.3	Parameters . . . . .	4
2.1.4	Events . . . . .	4
2.2	Compared Parameters . . . . .	5
2.3	Aspect . . . . .	6
2.4	Star Slots . . . . .	8
2.5	FID Slots . . . . .	8
<b>A</b>	<b>Summary</b>	<b>9</b>
A.1	Status . . . . .	9
A.2	Comments . . . . .	9

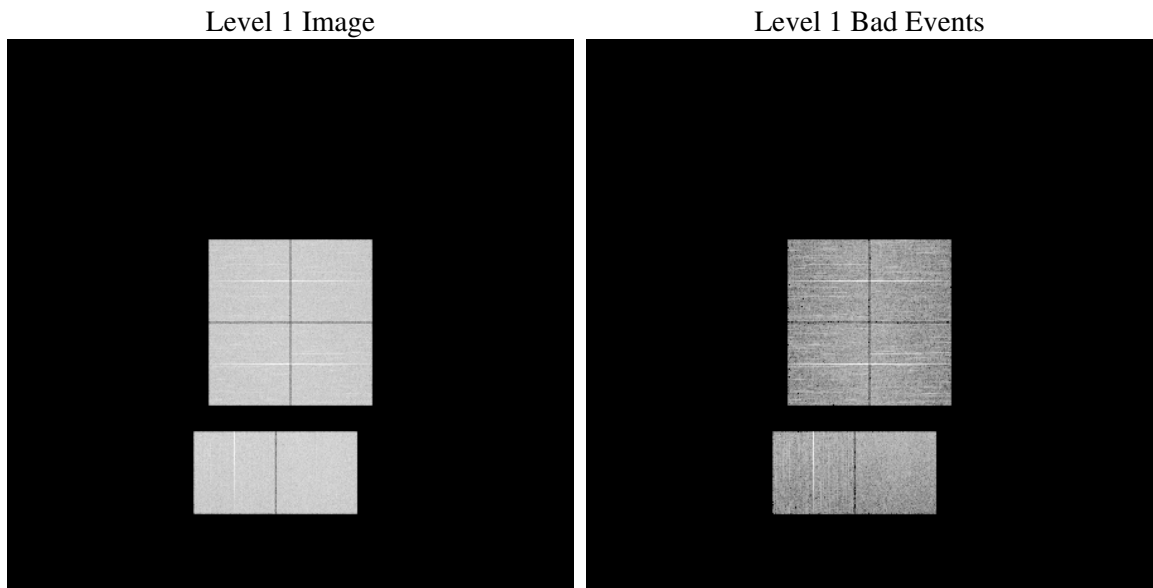
# 1 Front

seq_num	&#160
obs_id	59343
title	ACIS-012367 diagnostics
observer	CHANDRA engineering request/realtime commanding
object	&#160
dtcycle	0
cycle	P
ra_targ	0.0
dec_targ	0.0
ra_nom	50.01962147501
dec_nom	-13.678702874786
roll_nom	15.303886101734
revision	2
ontime	8274.3544334173
livetime	8169.5795753633
ontime0	8274.3954734206
ontime1	8274.4365134239
ontime2	8274.4775534272
ontime3	8274.313393414
ontime6	8274.5185934007
ontime7	8274.3544334173
l2events	1049254

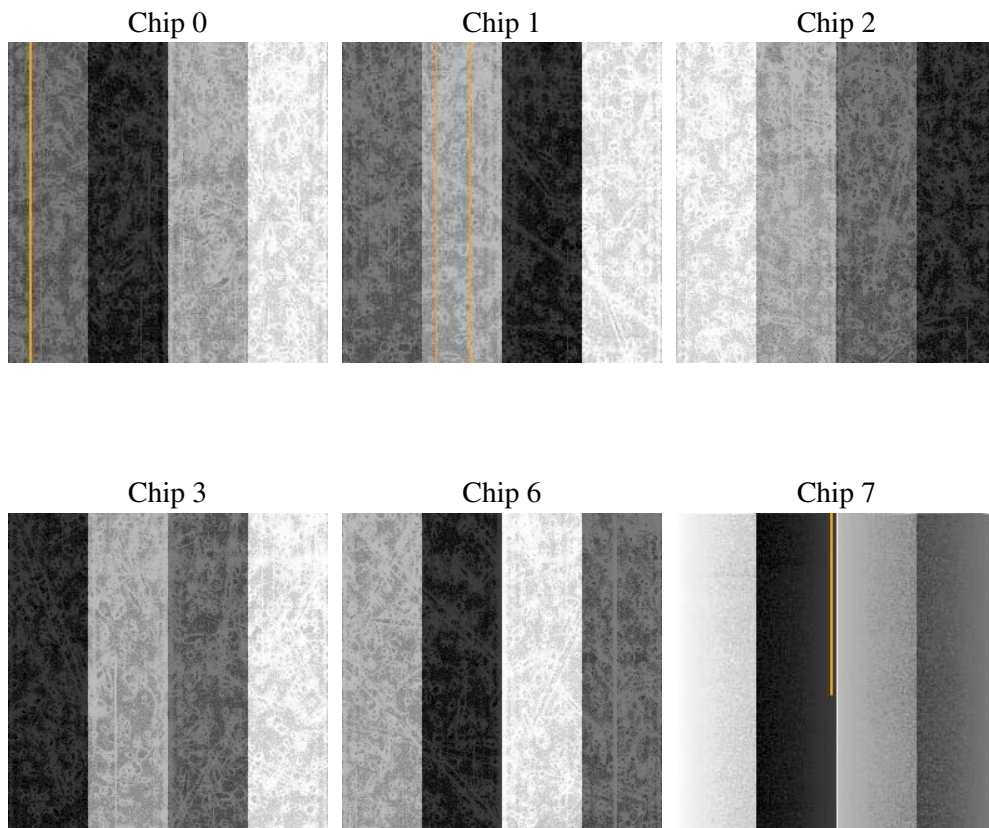
## 2 OBI

### 2.1 OBI

#### 2.1.1 Images



#### 2.1.2 Bias



### 2.1.3 Parameters

obi_num	0
ascdsver	7.6.7.1
caldbver	3.2.1
date	2006-04-05T15:32:36
revision	2

sched_exp_time	0.0
ontime	8277.5406918824
ontime0	8277.5406918824
ontime1	8277.5406918824
ontime2	8277.5406918824
ontime3	8277.5406918824
ontime6	8277.5406918824
ontime7	8277.5406918824
l1events	1476547

### 2.1.4 Events

	ccd 0	ccd 1	ccd 2	ccd 3	ccd 6	ccd 7
level 1 events	238476	238852	243900	243676	251912	259731
rejected events	59821	58921	63903	62072	64037	63197
rejected %	25%	24%	26%	25%	25%	24%

	ccd 0	ccd 1	ccd 2	ccd 3	ccd 6	ccd 7
grade 0 events	97569	97625	100062	101330	101224	31222
	40%	40%	41%	41%	40%	12%
grade 1 events	619	551	680	629	510	92
	0%	0%	0%	0%	0%	0%
grade 2 events	31248	32072	30340	30955	32631	60335
	13%	13%	12%	12%	12%	23%
grade 3 events	11594	11517	11799	11951	12068	13377
	4%	4%	4%	4%	4%	5%
grade 4 events	11725	11636	11936	11928	11661	13064
	4%	4%	4%	4%	4%	5%
grade 5 events	3487	3621	3481	3891	3889	7184
	1%	1%	1%	1%	1%	2%
grade 6 events	26589	27158	25936	25519	30384	78605
	11%	11%	10%	10%	12%	30%
grade 7 events	55645	54672	59666	57473	59545	55852
	23%	22%	24%	23%	23%	21%

## 2.2 Compared Parameters

Parameter	Planned	Actual	Parameter	Planned	Actual
Instrument	ACIS	ACIS	Obspar format version number	6	6
Detector	ACIS-012367	ACIS-012367	Obspar file type	PREDICTED	ACTUAL
Grating	NONE	NONE	Obspar update status	NONE	UPDATED
Data mode	FAINT	FAINT	On-chip summing requested	N	N
Observation mode	SECONDARY	SECONDARY	Subarray requested	NONE	NONE
Pointing RA	0	50.01962147501039	Alternating exposures requested	N	N
Pointing Dec	0	-13.67870287478608	Primary exposure time	3.2	3.2
Pointing Roll	0.0	15.30388610173377			
SIM focus pos (mm)	-0.782348	-0.7823481983384333			
SIM defocus (mm)	0	0.7509884410658636			
SIM translation stage pos (mm)	-233.592463	250.466033080201			
SIM translation stage offset (mm)	0	-0.01005468664627074			
Observation start time	247688512.257816	247688511.23283			
Observation start date	2005-11-06T18:21:52	2005-11-06T18:21:51			
Observation end time	247709822.008799	247709820.98381			
Observation end date	2005-11-07T00:17:02	2005-11-07T00:17:00			
Read mode	TIMED	TIMED			

## 2.3 Aspect



## **2.4 Star Slots**

## **2.5 FID Slots**



## A Summary

### A.1 Status

V&V Scientist	Beth Sundheim
V&V Date (YYYY-MM-DD)	2006.04.05
V&V Edition	1
V&V Disposition and Status	OK
V&V Charge Time	8.27435443

### A.2 Comments