

# V&V Reference Report

## L2 ASCDS Version : 8.4.3

Observation 59243 - L2 Version 2  
Chandra X-Ray Center

L2 Processing Date : Mar 20 2012

## Contents

<b>1</b>	<b>Front</b>	<b>2</b>
<b>2</b>	<b>OBI</b>	<b>3</b>
2.1	OBI . . . . .	3
2.1.1	Images . . . . .	3
2.1.2	Bias . . . . .	3
2.1.3	Parameters . . . . .	4
2.1.4	Events . . . . .	4
2.2	Compared Parameters . . . . .	5
2.3	Star Slots . . . . .	6
2.4	FID Slots . . . . .	6
<b>A</b>	<b>Summary</b>	<b>7</b>
A.1	Status . . . . .	7
A.2	Comments . . . . .	7

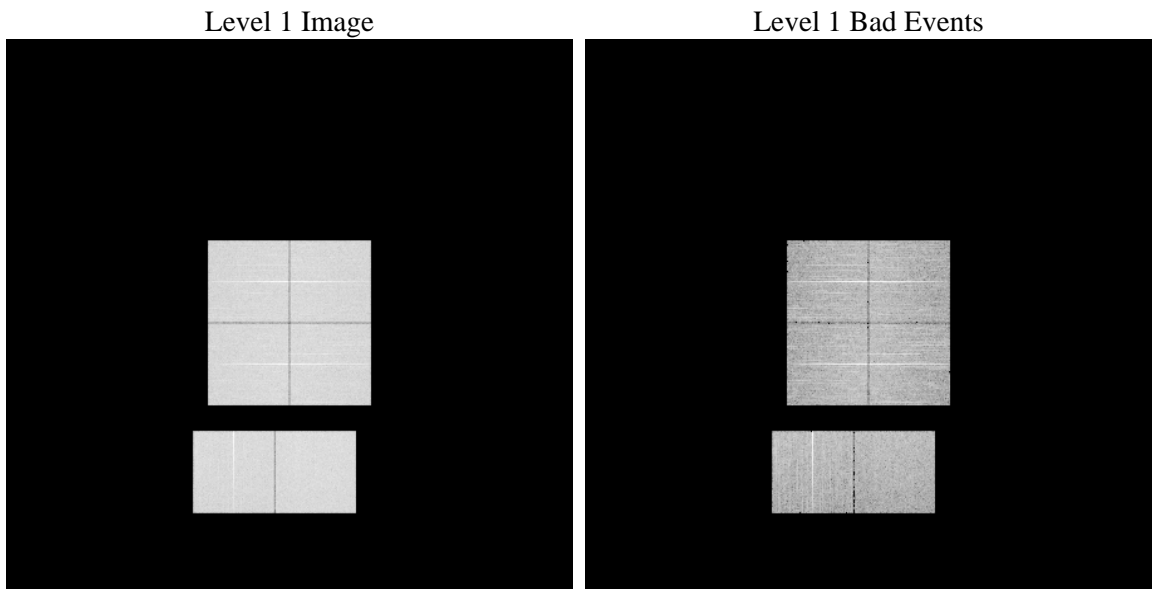
# 1 Front

seq_num	&#160	Sequence number
obs_id	59243	Observation id
title	ACIS-012367 diagnostics	Proposal title
observer	CHANDRA engineering request/realtime commanding	Principal investig
object	&#160	Source name
dtcycle	0	&#160
cycle	P	events from which exps? Prim/Second/Both
ra_targ	0.0	Observer's specified target RA [deg]
dec_targ	0.0	Observer's specified target Dec [deg]
ra_nom	95.014121281559	Nominal RA [deg]
dec_nom	-1.9751098925185	Nominal Dec [deg]
roll_nom	27.589624542202	Nominal Roll [deg]
revision	2	Processing version of data
ontime	8219.8813718259	Sum of GTIs [s]
livetime	8115.7962844775	Livetime [s]
ontime0	8219.8403318226	Sum of GTIs [s]
ontime1	8219.7992918193	Sum of GTIs [s]
ontime2	8219.758251816	Sum of GTIs [s]
ontime3	8219.9224118292	Sum of GTIs [s]
ontime6	8219.7172118425	Sum of GTIs [s]
ontime7	8219.8813718259	Sum of GTIs [s]
l2events	1016992	Number of level 2 events

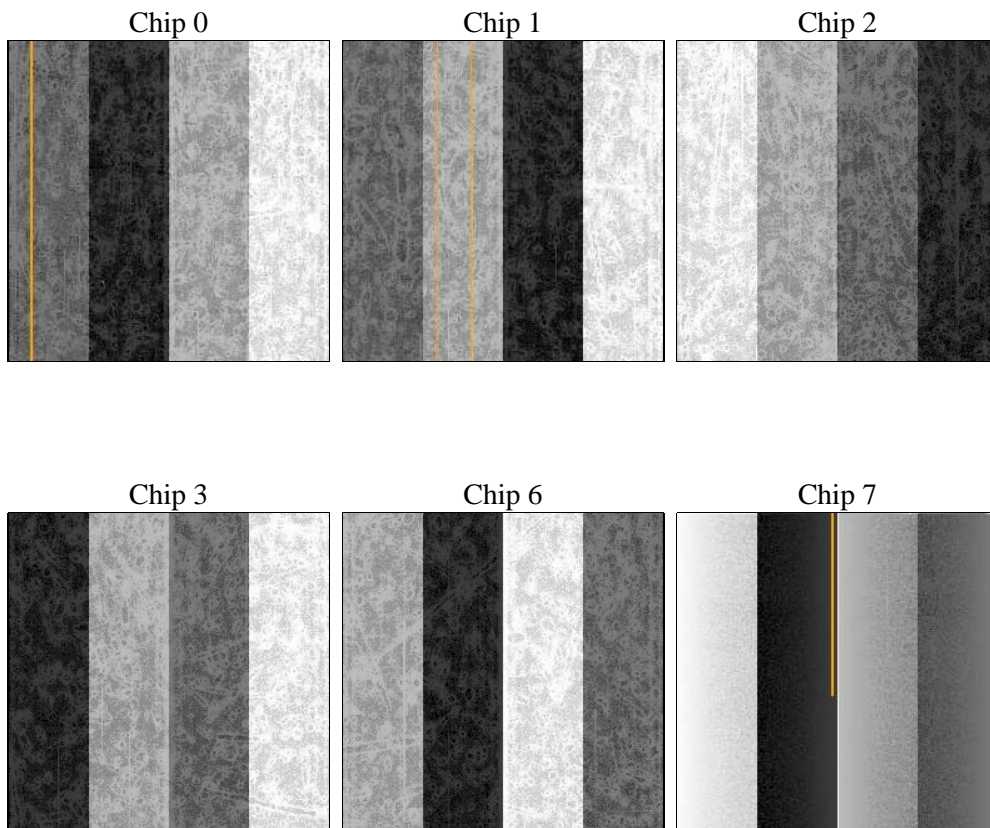
## 2 OBI

### 2.1 OBI

#### 2.1.1 Images



#### 2.1.2 Bias



### 2.1.3 Parameters

obi_num	0	Obi number	sched_exp_time	0.0	[s] Scheduled observation exposure time
ascdsver	8.4.3	Processing system revision	ontime	8219.8813718259	Sum of GTIs [s]
caldsver	4.4.8	&#160	ontime0	8219.8403318226	Sum of GTIs [s]
date	2012-03-20T03:47:30	Date and time of file creation	ontime1	8219.7992918193	Sum of GTIs [s]
revision	2	Processing version of data	ontime2	8219.758251816	Sum of GTIs [s]
			ontime3	8219.9224118292	Sum of GTIs [s]
			ontime6	8219.7172118425	Sum of GTIs [s]
			ontime7	8219.8813718259	Sum of GTIs [s]
			l1events	1446432	Number of level 1 events

### 2.1.4 Events

	ccd 0	ccd 1	ccd 2	ccd 3	ccd 6	ccd 7		ccd 0	ccd 1	ccd 2	ccd 3	ccd 6	ccd 7
level 1 events	232988	233838	239639	239646	244736	255585	grade 0 events	94173	94289	97506	97214	98055	46354
rejected events	62096	61265	65862	66389	64598	55679		40%	40%	40%	40%	40%	18%
rejected %	26%	26%	27%	27%	26%	21%	grade 1 events	548	501	663	625	568	158
								0%	0%	0%	0%	0%	0%
							grade 2 events	30041	31285	29753	29998	31481	43883
								12%	13%	12%	12%	12%	17%
							grade 3 events	11436	11203	11497	11397	11380	19834
								4%	4%	4%	4%	4%	7%
							grade 4 events	11212	11080	11492	11412	11310	19756
								4%	4%	4%	4%	4%	7%
							grade 5 events	3518	3834	3446	3897	3941	9371
								1%	1%	1%	1%	1%	3%
							grade 6 events	25297	25935	24903	24389	29239	71443
								10%	11%	10%	10%	11%	27%
							grade 7 events	56763	55711	60379	60714	58762	44786
								24%	23%	25%	25%	24%	17%

## 2.2 Compared Parameters

Parameter	Planned	Actual
Instrument	ACIS	ACIS
Detector	ACIS-012367	ACIS-012367
Grating	NONE	NONE
Data mode	FAINT	FAINT
Observation mode	SECONDARY	SECONDARY
[deg] Pointing RA	0	95.0141212815591
[deg] Pointing Dec	0	-1.975109892518464
[deg] Pointing Roll	0.0	27.58962454220217
[mm] SIM focus pos	-0.782348	-0.6828225247311905
[mm] SIM defocus	0	0.8505141146731063
[mm] SIM translation stage pos	-233.592463	250.466033080201
[mm] SIM translation stage offset	0	-0.01005468664627074
[s] Observation start time (MET)	250886930.60559	250886929.5806
Observation start date	2005-12-13T18:48:51	2005-12-13T18:48:49
[s] Observation end time (MET)	250908242.406578	250908241.38158
Observation end date	2005-12-14T00:44:02	2005-12-14T00:44:01
Read mode	TIMED	TIMED

Parameter	Planned	Actual
Obspar format version number	7	7
Obspar file type	PREDICTED	ACTUAL
Obspar update status	NONE	UPDATED
On-chip summing requested	N	N
Subarray requested	NONE	NONE
Alternating exposures requested	N	N
[s] Primary exposure time	3.2	3.2

## 2.3 Star Slots

## 2.4 FID Slots

## **A Summary**

### **A.1 Status**

V&V Scientist	Jen Lauer
V&V Date (YYYY-MM-DD)	2012.03.20
V&V Edition	1
V&V Disposition and Status	OK
V&V Charge Time	8.2198813718259

### **A.2 Comments**