

V&V Reference Report

L2 ASCDS Version : 8.4.3.1

Observation 58633 - L2 Version 2
Chandra X-Ray Center

L2 Processing Date : Apr 16 2012

Contents

1	Front	2
2	OBI	3
2.1	OBI	3
2.1.1	Images	3
2.1.2	Bias	3
2.1.3	Parameters	4
2.1.4	Events	4
2.2	Compared Parameters	5
2.3	Star Slots	6
2.4	FID Slots	6
A	Summary	7
A.1	Status	7
A.2	Comments	7

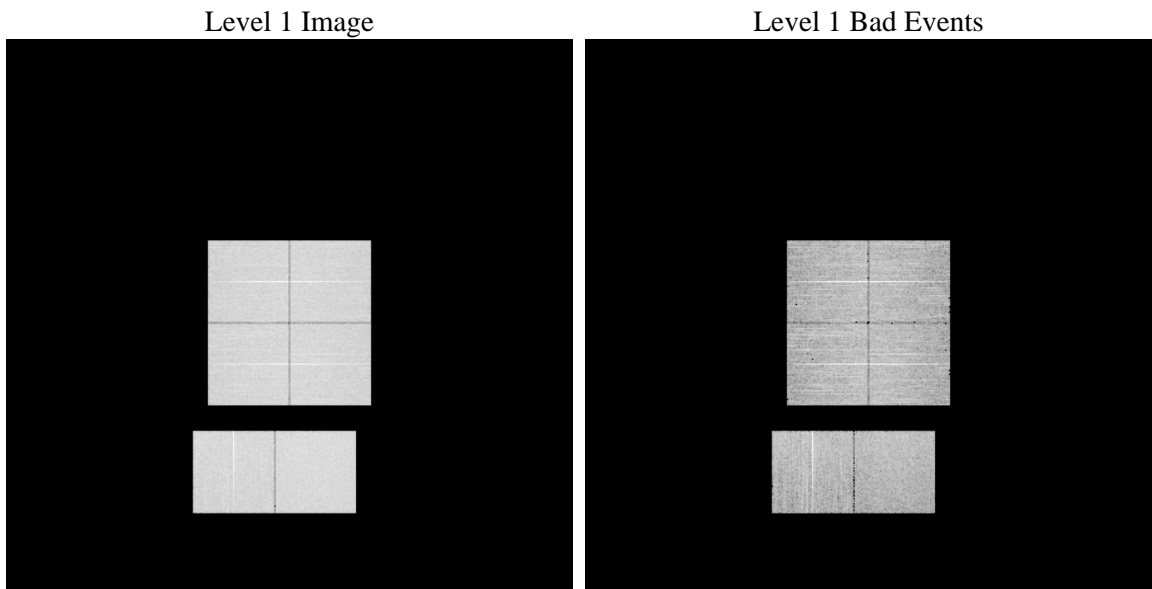
1 Front

seq_num	 	Sequence number
obs_id	58633	Observation id
title	ACIS-012367 diagnostics	Proposal title
observer	CHANDRA engineering request/realtime commanding	Principal investig
object	 	Source name
dtcycle	0	
cycle	P	events from which exps? Prim/Second/Both
ra_targ	0.0	Observer's specified target RA [deg]
dec_targ	0.0	Observer's specified target Dec [deg]
ra_nom	74.470129282617	Nominal RA [deg]
dec_nom	48.973394342482	Nominal Dec [deg]
roll_nom	209.19517124938	Nominal Roll [deg]
revision	2	Processing version of data
ontime	7782.3999710679	Sum of GTIs [s]
livetime	7683.8545366356	Livetime [s]
ontime0	7782.3999710679	Sum of GTIs [s]
ontime1	7782.3999710679	Sum of GTIs [s]
ontime2	7782.3999710679	Sum of GTIs [s]
ontime3	7782.3999710679	Sum of GTIs [s]
ontime6	7782.3999710679	Sum of GTIs [s]
ontime7	7782.3999710679	Sum of GTIs [s]
l2events	804423	Number of level 2 events

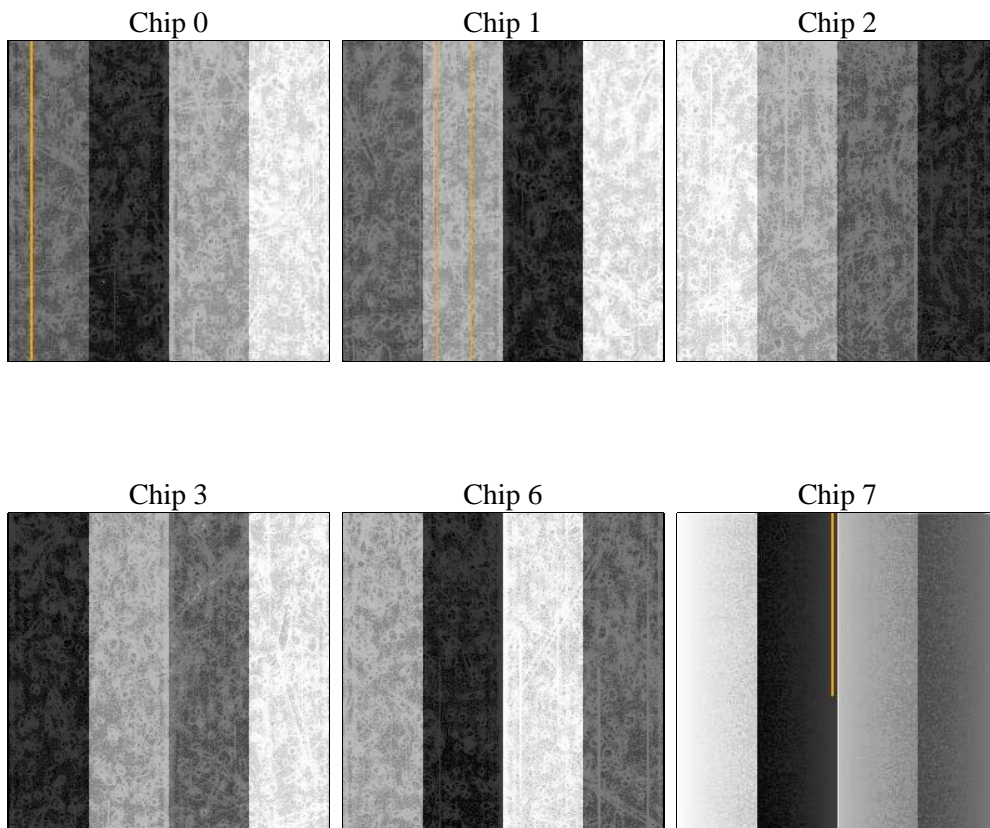
2 OBI

2.1 OBI

2.1.1 Images



2.1.2 Bias



2.1.3 Parameters

obi_num	0	Obi number	sched_exp_time	0.0	[s] Scheduled observation exposure time
ascdsver	8.4.3.1	Processing system revision	ontime	7782.3999710679	Sum of GTIs [s]
caldsver	4.4.9	 	ontime0	7782.3999710679	Sum of GTIs [s]
date	2012-04-16T04:29:45	Date and time of file creation	ontime1	7782.3999710679	Sum of GTIs [s]
revision	2	Processing version of data	ontime2	7782.3999710679	Sum of GTIs [s]
			ontime3	7782.3999710679	Sum of GTIs [s]
			ontime6	7782.3999710679	Sum of GTIs [s]
			ontime7	7782.3999710679	Sum of GTIs [s]
			l1events	1211444	Number of level 1 events

2.1.4 Events

	ccd 0	ccd 1	ccd 2	ccd 3	ccd 6	ccd 7		ccd 0	ccd 1	ccd 2	ccd 3	ccd 6	ccd 7
level 1 events	195321	195324	199892	198478	203999	218430	grade 0 events	73037	72819	75612	75270	75204	36455
rejected events	60279	59525	64061	62215	62859	55020		37%	37%	37%	37%	36%	16%
rejected %	30%	30%	32%	31%	30%	25%	grade 1 events	472	400	558	510	424	171
								0%	0%	0%	0%	0%	0%
							grade 2 events	23666	24720	22499	23282	24739	35662
								12%	12%	11%	11%	12%	16%
							grade 3 events	8814	8717	8931	9169	8842	15717
								4%	4%	4%	4%	4%	7%
							grade 4 events	8792	8573	8884	8978	8732	15831
								4%	4%	4%	4%	4%	7%
							grade 5 events	3444	3657	3269	3781	3760	9415
								1%	1%	1%	1%	1%	4%
							grade 6 events	20733	20970	19905	19564	23623	59745
								10%	10%	9%	9%	11%	27%
							grade 7 events	56363	55468	60234	57924	58675	45434
								28%	28%	30%	29%	28%	20%

2.2 Compared Parameters

Parameter	Planned	Actual	Parameter	Planned	Actual
Instrument	ACIS	ACIS	Obspar format version number	7	7
Detector	ACIS-012367	ACIS-012367	Obspar file type	PREDICTED	ACTUAL
Grating	NONE	NONE	Obspar update status	NONE	UPDATED
Data mode	FAINT	FAINT	On-chip summing requested	N	N
Observation mode	SECONDARY	SECONDARY	Subarray requested	NONE	NONE
[deg] Pointing RA	0	74.47012928261734	Alternating exposures requested	N	N
[deg] Pointing Dec	0	48.97339434248234	[s] Primary exposure time	3.2	3.2
[deg] Pointing Roll	0.0	209.1951712493797			
[mm] SIM focus pos	-0.782348	-0.6828225247311905			
[mm] SIM defocus	0	0.8505141146731063			
[mm] SIM translation stage pos	-233.592463	250.466033080201			
[mm] SIM translation stage offset	0	-0.01005468664627074			
[s] Observation start time (MET)	283055359.910506	283055358.88551			
Observation start date	2006-12-21T02:29:20	2006-12-21T02:29:18			
[s] Observation end time (MET)	283072881.261336	283072880.23634			
Observation end date	2006-12-21T07:21:21	2006-12-21T07:21:20			
Read mode	TIMED	TIMED			

2.3 Star Slots

2.4 FID Slots

A Summary

A.1 Status

V&V Scientist	Jen Lauer
V&V Date (YYYY-MM-DD)	2012.04.18
V&V Edition	1
V&V Disposition and Status	OK
V&V Charge Time	7.7823999710679

A.2 Comments