

# V&V Reference Report

## L2 ASCDS Version : 8.4.4

Observation 58563 - L2 Version 2  
Chandra X-Ray Center

L2 Processing Date : Apr 19 2012

## Contents

<b>1</b>	<b>Front</b>	<b>2</b>
<b>2</b>	<b>OBI</b>	<b>3</b>
2.1	OBI . . . . .	3
2.1.1	Images . . . . .	3
2.1.2	Bias . . . . .	3
2.1.3	Parameters . . . . .	4
2.1.4	Events . . . . .	4
2.2	Compared Parameters . . . . .	5
2.3	Star Slots . . . . .	6
2.4	FID Slots . . . . .	6
<b>A</b>	<b>Summary</b>	<b>7</b>
A.1	Status . . . . .	7
A.2	Comments . . . . .	7

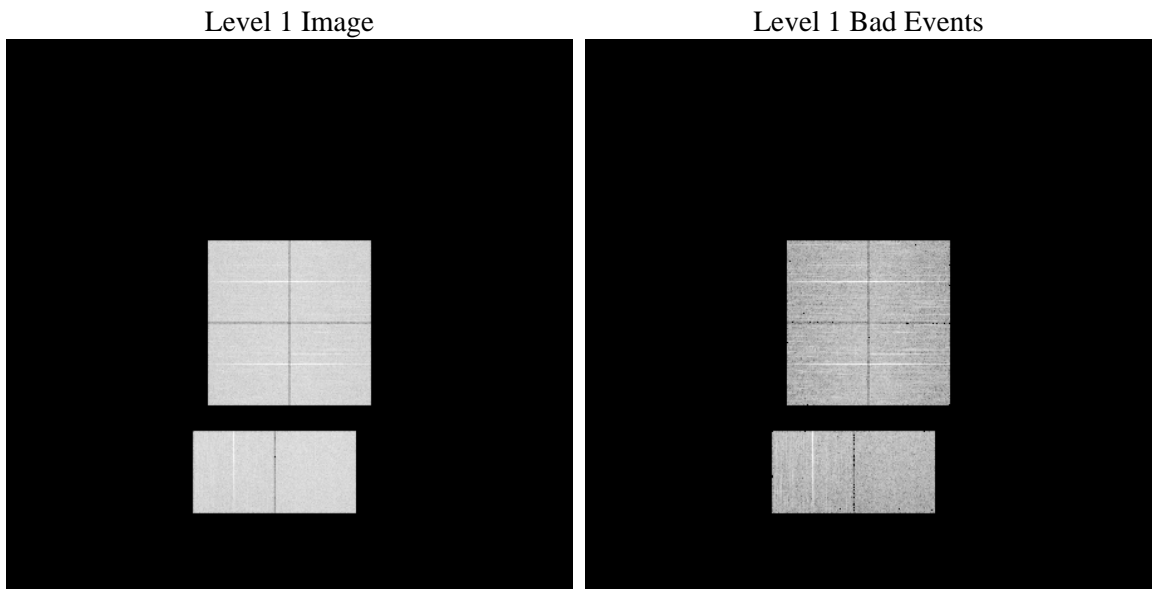
# 1 Front

seq_num	&#160	Sequence number
obs_id	58563	Observation id
title	ACIS-012367 diagnostics	Proposal title
observer	CHANDRA engineering request/realtime commanding	Principal investig
object	&#160	Source name
dtcycle	0	&#160
cycle	P	events from which exps? Prim/Second/Both
ra_targ	0.0	Observer's specified target RA [deg]
dec_targ	0.0	Observer's specified target Dec [deg]
ra_nom	93.999713173216	Nominal RA [deg]
dec_nom	40.971742072434	Nominal Dec [deg]
roll_nom	238.96878732206	Nominal Roll [deg]
revision	2	Processing version of data
ontime	6195.1999769807	Sum of GTIs [s]
livetime	6116.7526245706	Livetime [s]
ontime0	6195.1999769807	Sum of GTIs [s]
ontime1	6195.1999769807	Sum of GTIs [s]
ontime2	6195.1999769807	Sum of GTIs [s]
ontime3	6195.1999769807	Sum of GTIs [s]
ontime6	6195.1999769807	Sum of GTIs [s]
ontime7	6195.1999769807	Sum of GTIs [s]
l2events	688243	Number of level 2 events

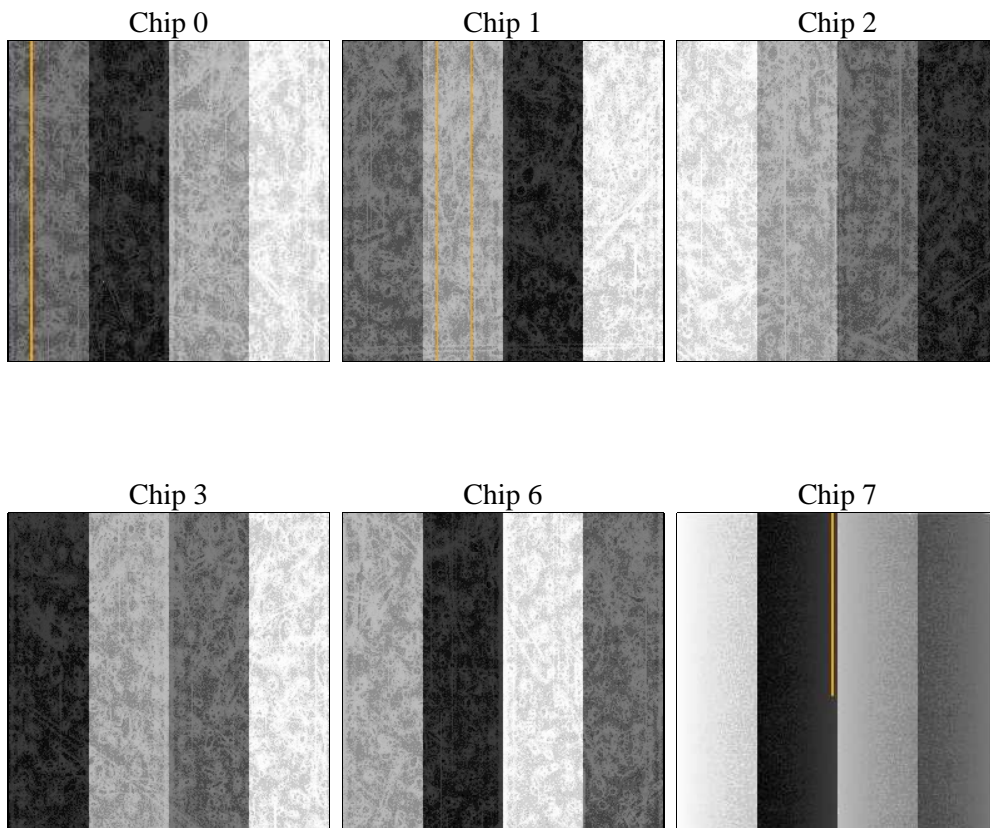
## 2 OBI

### 2.1 OBI

#### 2.1.1 Images



#### 2.1.2 Bias



### 2.1.3 Parameters

obi_num	0	Obi number	sched_exp_time	0.0	[s] Scheduled observation exposure time
ascdsver	8.4.4	Processing system revision	ontime	6195.1999769807	Sum of GTIs [s]
caldsver	4.4.9	&#160	ontime0	6195.1999769807	Sum of GTIs [s]
date	2012-04-19T02:41:59	Date and time of file creation	ontime1	6195.1999769807	Sum of GTIs [s]
revision	2	Processing version of data	ontime2	6195.1999769807	Sum of GTIs [s]
			ontime3	6195.1999769807	Sum of GTIs [s]
			ontime6	6195.1999769807	Sum of GTIs [s]
			ontime7	6195.1999769807	Sum of GTIs [s]
			l1events	1049606	Number of level 1 events

### 2.1.4 Events

	ccd 0	ccd 1	ccd 2	ccd 3	ccd 6	ccd 7		ccd 0	ccd 1	ccd 2	ccd 3	ccd 6	ccd 7
level 1 events	169080	169822	171790	173945	178023	186946	grade 0 events	62827	61988	63562	64147	62836	31007
rejected events	52880	52616	56652	56943	57757	47662		37%	36%	36%	36%	35%	16%
rejected %	31%	30%	32%	32%	32%	25%	grade 1 events	500	396	521	501	430	133
								0%	0%	0%	0%	0%	0%
							grade 2 events	20488	21467	19206	20028	20926	30412
								12%	12%	11%	11%	11%	16%
							grade 3 events	7390	7301	7427	7701	7547	13175
								4%	4%	4%	4%	4%	7%
							grade 4 events	7365	7266	7514	7543	7614	12803
								4%	4%	4%	4%	4%	6%
							grade 5 events	2951	3056	2878	3342	3246	7920
								1%	1%	1%	1%	1%	4%
							grade 6 events	18130	19184	17429	17583	21343	51887
								10%	11%	10%	10%	11%	27%
							grade 7 events	49429	49164	53253	53100	54081	39609
								29%	28%	30%	30%	30%	21%

## 2.2 Compared Parameters

Parameter	Planned	Actual
Instrument	ACIS	ACIS
Detector	ACIS-012367	ACIS-012367
Grating	NONE	NONE
Data mode	FAINT	FAINT
Observation mode	SECONDARY	SECONDARY
[deg] Pointing RA	0	93.99971317321638
[deg] Pointing Dec	0	40.97174207243378
[deg] Pointing Roll	0.0	238.9687873220577
[mm] SIM focus pos	-0.782348	-1.038866356238299
[mm] SIM defocus	0	0.4944702831659975
[mm] SIM translation stage pos	-233.592463	250.466033080201
[mm] SIM translation stage offset	0	-0.01005468664627074
[s] Observation start time (MET)	285798020.19045	285798019.16544
Observation start date	2007-01-21T20:20:20	2007-01-21T20:20:19
[s] Observation end time (MET)	285809112.740976	285809111.71597
Observation end date	2007-01-21T23:25:13	2007-01-21T23:25:11
Read mode	TIMED	TIMED

Parameter	Planned	Actual
Obspar format version number	7	7
Obspar file type	PREDICTED	ACTUAL
Obspar update status	NONE	UPDATED
On-chip summing requested	N	N
Subarray requested	NONE	NONE
Alternating exposures requested	N	N
[s] Primary exposure time	3.2	3.2

## 2.3 Star Slots

## 2.4 FID Slots

## A Summary

### A.1 Status

V&V Scientist	Beth Sundheim
V&V Date (YYYY-MM-DD)	2012.04.19
V&V Edition	1
V&V Disposition and Status	OK
V&V Charge Time	6.1951999769807

### A.2 Comments