

# V&V Reference Report

## L2 ASCDS Version : 8.4.4

Observation 57813 - L2 Version 2  
Chandra X-Ray Center

L2 Processing Date : May 15 2012

## Contents

<b>1</b>	<b>Front</b>	<b>2</b>
<b>2</b>	<b>OBI</b>	<b>3</b>
2.1	OBI . . . . .	3
2.1.1	Images . . . . .	3
2.1.2	Bias . . . . .	3
2.1.3	Parameters . . . . .	4
2.1.4	Events . . . . .	4
2.2	Compared Parameters . . . . .	5
2.3	Star Slots . . . . .	6
2.4	FID Slots . . . . .	6
<b>A</b>	<b>Summary</b>	<b>7</b>
A.1	Status . . . . .	7
A.2	Comments . . . . .	7

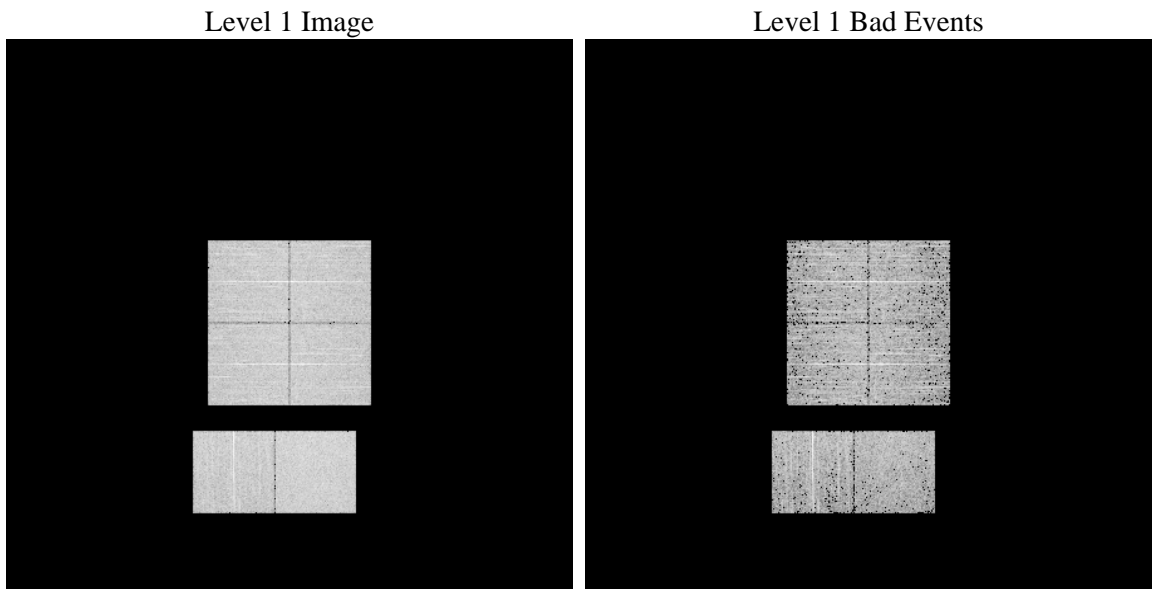
# 1 Front

seq_num	&#160	Sequence number
obs_id	57813	Observation id
title	ACIS-012367 diagnostics	Proposal title
observer	CHANDRA engineering request/realtime commanding	Principal investig
object	&#160	Source name
dtcycle	0	&#160
cycle	P	events from which exps? Prim/Second/Both
ra_targ	0.0	Observer's specified target RA [deg]
dec_targ	0.0	Observer's specified target Dec [deg]
ra_nom	236.97560350797	Nominal RA [deg]
dec_nom	4.485588646741	Nominal Dec [deg]
roll_nom	173.66257083584	Nominal Roll [deg]
revision	2	Processing version of data
ontime	2793.5999896526	Sum of GTIs [s]
livetime	2758.2257444797	Livetime [s]
ontime0	2793.5999896526	Sum of GTIs [s]
ontime1	2793.5999896526	Sum of GTIs [s]
ontime2	2793.5999896526	Sum of GTIs [s]
ontime3	2793.5999896526	Sum of GTIs [s]
ontime6	2793.5999896526	Sum of GTIs [s]
ontime7	2793.5999896526	Sum of GTIs [s]
l2events	201693	Number of level 2 events

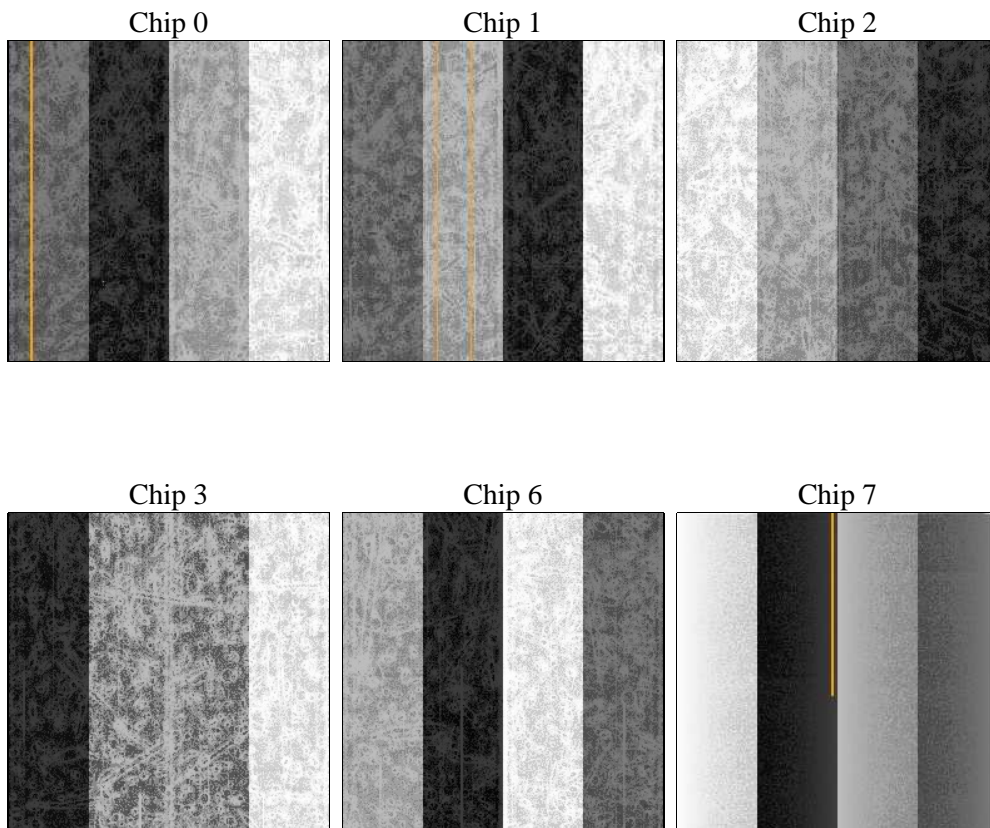
## 2 OBI

### 2.1 OBI

#### 2.1.1 Images



#### 2.1.2 Bias



### 2.1.3 Parameters

obi_num	1	Obi number	sched_exp_time	0.0	[s] Scheduled observation exposure time
ascdsver	8.4.4	Processing system revision	ontime	2793.5999896526	Sum of GTIs [s]
caldbver	4.4.9	&#160	ontime0	2793.5999896526	Sum of GTIs [s]
date	2012-05-15T05:07:15	Date and time of file creation	ontime1	2793.5999896526	Sum of GTIs [s]
revision	2	Processing version of data	ontime2	2793.5999896526	Sum of GTIs [s]
			ontime3	2793.5999896526	Sum of GTIs [s]
			ontime6	2793.5999896526	Sum of GTIs [s]
			ontime7	2793.5999896526	Sum of GTIs [s]
			l1events	356640	Number of level 1 events

### 2.1.4 Events

	ccd 0	ccd 1	ccd 2	ccd 3	ccd 6	ccd 7		ccd 0	ccd 1	ccd 2	ccd 3	ccd 6	ccd 7
level 1 events	58127	56642	58420	57009	58915	67527	grade 0 events	17948	17914	18384	18445	18350	9277
rejected events	24986	23434	24957	23478	24572	22238		30%	31%	31%	32%	31%	13%
rejected %	42%	41%	42%	41%	41%	32%	grade 1 events	102	101	150	129	129	47
								0%	0%	0%	0%	0%	0%
							grade 2 events	5888	6056	5708	5870	5997	9912
								10%	10%	9%	10%	10%	14%
							grade 3 events	2236	2213	2314	2241	2227	4318
								3%	3%	3%	3%	3%	6%
							grade 4 events	2149	2166	2253	2315	2205	4220
								3%	3%	3%	4%	3%	6%
							grade 5 events	1276	1382	1263	1441	1436	3794
								2%	2%	2%	2%	2%	5%
							grade 6 events	4961	4892	4838	4702	5608	17631
								8%	8%	8%	8%	9%	26%
							grade 7 events	23567	21918	23510	21866	22963	18328
								40%	38%	40%	38%	38%	27%

## 2.2 Compared Parameters

Parameter	Planned	Actual	Parameter	Planned	Actual
Instrument	ACIS	ACIS	Obspar format version number	7	7
Detector	ACIS-012367	ACIS-012367	Obspar file type	PREDICTED	ACTUAL
Grating	NONE	NONE	Obspar update status	NONE	UPDATED
Data mode	FAINT	FAINT	On-chip summing requested	N	N
Observation mode	SECONDARY	SECONDARY	Subarray requested	NONE	NONE
[deg] Pointing RA	0	236.9756035079731	Alternating exposures requested	N	N
[deg] Pointing Dec	0	4.485588646741045	[s] Primary exposure time	3.2	3.2
[deg] Pointing Roll	0.0	173.6625708358353			
[mm] SIM focus pos	-1.429586	-0.7809083437167272			
[mm] SIM defocus	0.1037507710433287	0.7524282956875696			
[mm] SIM translation stage pos	250.455976	250.466033080201			
[mm] SIM translation stage offset	0	-0.01005468664627074			
[s] Observation start time (MET)	327386265.591456	327386264.56646			
Observation start date	2008-05-17T04:37:46	2008-05-17T04:37:44			
[s] Observation end time (MET)	327409613.042594	327409612.0176			
Observation end date	2008-05-17T11:06:53	2008-05-17T11:06:52			
Read mode	TIMED	TIMED			

## **2.3 Star Slots**

## **2.4 FID Slots**

## A Summary

### A.1 Status

V&V Scientist	Beth Sundheim
V&V Date (YYYY-MM-DD)	2012.05.21
V&V Edition	1
V&V Disposition and Status	OK
V&V Charge Time	2.7935999896526

### A.2 Comments