

V&V Reference Report

L2 ASCDS Version : 8.4.4

Observation 57323 - L2 Version 3
Chandra X-Ray Center

L2 Processing Date : Jun 1 2012

Contents

1	Front	2
2	OBI	3
2.1	OBI	3
2.1.1	Images	3
2.1.2	Bias	3
2.1.3	Parameters	4
2.1.4	Events	4
2.2	Compared Parameters	5
2.3	Star Slots	6
2.4	FID Slots	6
A	Summary	7
A.1	Status	7
A.2	Comments	7

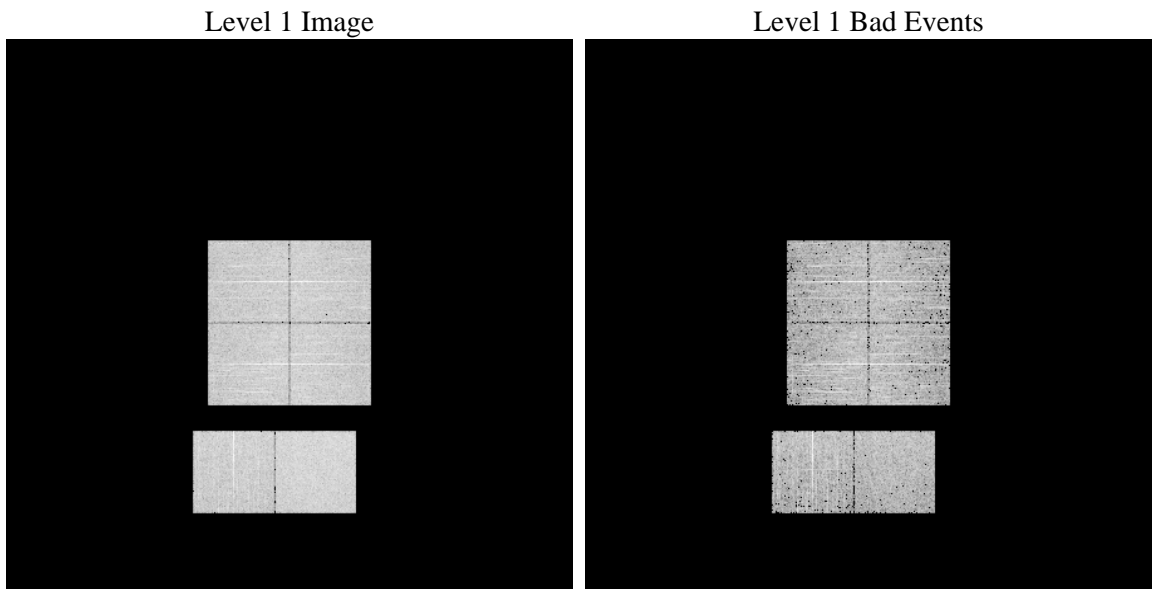
1 Front

seq_num	 	Sequence number
obs_id	57323	Observation id
title	ACIS-012367 diagnostics	Proposal title
observer	CHANDRA engineering request/realtime commanding	Principal investig
object	 	Source name
dtcycle	0	
cycle	P	events from which exps? Prim/Second/Both
ra_targ	0.0	Observer's specified target RA [deg]
dec_targ	0.0	Observer's specified target Dec [deg]
ra_nom	126.02376668352	Nominal RA [deg]
dec_nom	-4.5015056872338	Nominal Dec [deg]
roll_nom	327.37632929081	Nominal Roll [deg]
revision	3	Processing version of data
ontime	3273.5999878645	Sum of GTIs [s]
livetime	3232.1476936929	Livetime [s]
ontime0	3273.5999878645	Sum of GTIs [s]
ontime1	3273.5999878645	Sum of GTIs [s]
ontime2	3273.5999878645	Sum of GTIs [s]
ontime3	3273.5999878645	Sum of GTIs [s]
ontime6	3273.5999878645	Sum of GTIs [s]
ontime7	3273.5999878645	Sum of GTIs [s]
l2events	205677	Number of level 2 events

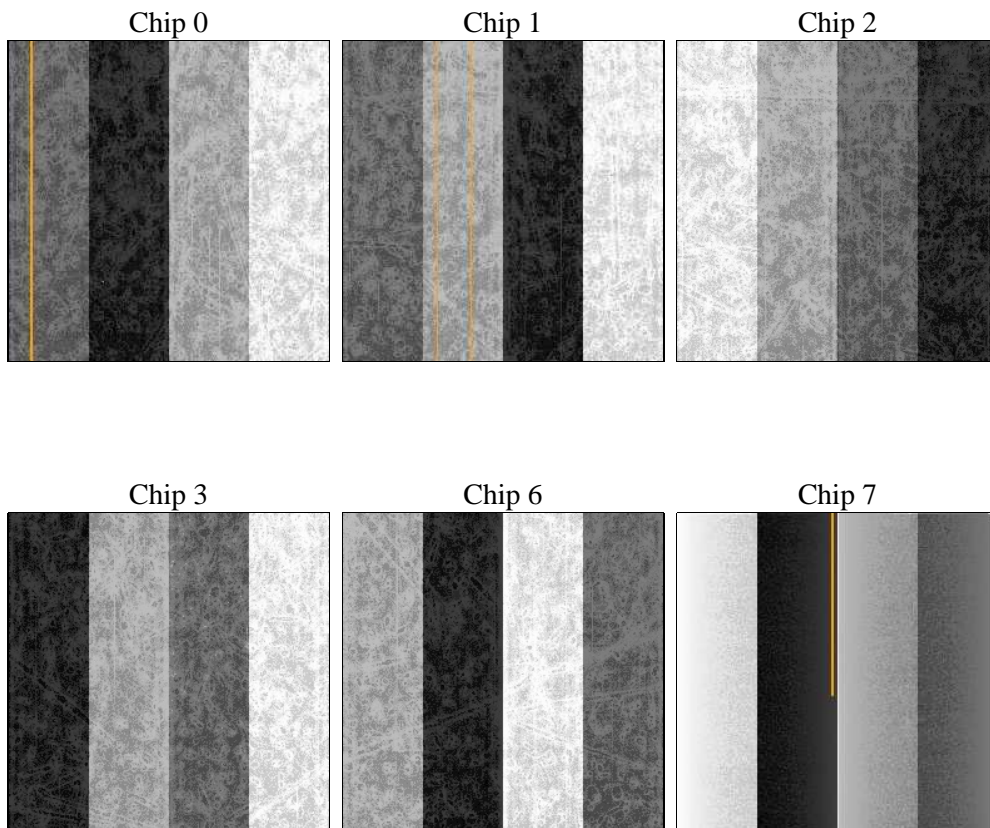
2 OBI

2.1 OBI

2.1.1 Images



2.1.2 Bias



2.1.3 Parameters

obi_num	0	Obi number	sched_exp_time	0.0	[s] Scheduled observation exposure time
ascdsver	8.4.4	Processing system revision	ontime	3273.5999878645	Sum of GTIs [s]
caldsver	4.4.9	 	ontime0	3273.5999878645	Sum of GTIs [s]
date	2012-06-01T16:02:50	Date and time of file creation	ontime1	3273.5999878645	Sum of GTIs [s]
revision	3	Processing version of data	ontime2	3273.5999878645	Sum of GTIs [s]
			ontime3	3273.5999878645	Sum of GTIs [s]
			ontime6	3273.5999878645	Sum of GTIs [s]
			ontime7	3273.5999878645	Sum of GTIs [s]
			l1events	390546	Number of level 1 events

2.1.4 Events

	ccd 0	ccd 1	ccd 2	ccd 3	ccd 6	ccd 7		ccd 0	ccd 1	ccd 2	ccd 3	ccd 6	ccd 7
level 1 events	60386	61532	63682	63483	64639	76824	grade 0 events	17608	17371	18126	18507	18160	9367
rejected events	27364	28348	30371	29560	30040	27671		29%	28%	28%	29%	28%	12%
rejected %	45%	46%	47%	46%	46%	36%	grade 1 events	145	112	159	158	106	61
								0%	0%	0%	0%	0%	0%
							grade 2 events	6008	6331	5811	5990	6288	10753
								9%	10%	9%	9%	9%	13%
							grade 3 events	2220	2178	2220	2277	2273	4523
								3%	3%	3%	3%	3%	5%
							grade 4 events	2213	2189	2274	2307	2203	4724
								3%	3%	3%	3%	3%	6%
							grade 5 events	1619	1695	1522	1853	1750	4595
								2%	2%	2%	2%	2%	5%
							grade 6 events	5012	5146	4918	4879	5711	19838
								8%	8%	7%	7%	8%	25%
							grade 7 events	25561	26510	28652	27512	28148	22963
								42%	43%	44%	43%	43%	29%

2.2 Compared Parameters

Parameter	Planned	Actual	Parameter	Planned	Actual
Instrument	ACIS	ACIS	Obspar format version number	7	7
Detector	ACIS-012367	ACIS-012367	Obspar file type	PREDICTED	ACTUAL
Grating	NONE	NONE	Obspar update status	NONE	UPDATED
Data mode	FAINT	FAINT	Number of optional ACIS chips dropped	0	0
Observation mode	SECONDARY	SECONDARY	On-chip summing requested	N	N
[deg] Pointing RA	0	126.0237666835177	Subarray requested	NONE	NONE
[deg] Pointing Dec	0	-4.501505687233804	Alternating exposures requested	N	N
[deg] Pointing Roll	0.0	327.3763292908085	[s] Primary exposure time	3.2	3.2
[mm] SIM focus pos	-1.429586	-0.6828225247311905			
[mm] SIM defocus	0.1037507710433287	0.8505141146731063			
[mm] SIM translation stage pos	250.455976	250.466033080201			
[mm] SIM translation stage offset	0	-0.01005468664627074			
[s] Observation start time (MET)	350233458.575066	350233457.55006			
Observation start date	2009-02-05T15:04:19	2009-02-05T15:04:17			
[s] Observation end time (MET)	350259036.426336	350259035.40133			
Observation end date	2009-02-05T22:10:36	2009-02-05T22:10:35			
Read mode	TIMED	TIMED			

2.3 Star Slots

2.4 FID Slots

A Summary

A.1 Status

V&V Scientist	Jen Lauer
V&V Date (YYYY-MM-DD)	2012.06.07
V&V Edition	1
V&V Disposition and Status	OK
V&V Charge Time	3.2735999878645

A.2 Comments

A spatial region of the original bias map for CCD = 0 suffered from anomalously high data values. Pixels in the event data that were bias-corrected by one of the original affected bias pixels may have an apparent energy shift. While the change in energy is expected to be small (~ 20 eV), it depends on many parameters that have not yet been fully explored for this bias anomaly. The bias map for CCD = 0 has been reconstructed for this processing to remove this anomaly using scaled data from a comparable bias map from another observation. The pixels affected by the anomaly are bounded by chip coords:
(304,1),(347,1),(347,178),(304,178)