

# V&V Reference Report

## L2 ASCDS Version : 8.4.5

Observation 56943 - L2 Version 2  
Chandra X-Ray Center

L2 Processing Date : Jun 10 2012

## Contents

<b>1</b>	<b>Front</b>	<b>2</b>
<b>2</b>	<b>OBI</b>	<b>3</b>
2.1	OBI . . . . .	3
2.1.1	Images . . . . .	3
2.1.2	Bias . . . . .	3
2.1.3	Parameters . . . . .	4
2.1.4	Events . . . . .	4
2.2	Compared Parameters . . . . .	5
2.3	Star Slots . . . . .	6
2.4	FID Slots . . . . .	6
<b>A</b>	<b>Summary</b>	<b>7</b>
A.1	Status . . . . .	7
A.2	Comments . . . . .	7

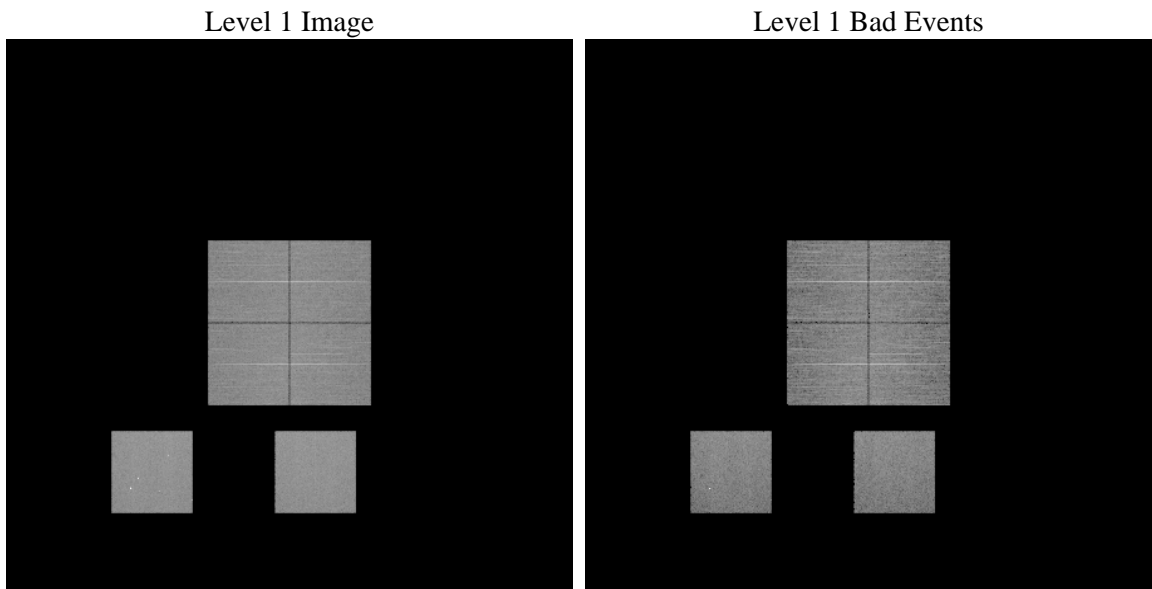
# 1 Front

seq_num	&#160	Sequence number
obs_id	56943	Observation id
title	ACIS-012357 diagnostics	Proposal title
observer	CHANDRA engineering request/realtime commanding	Principal investig
object	&#160	Source name
dtcycle	0	&#160
cycle	P	events from which exps? Prim/Second/Both
ra_targ	0.0	Observer's specified target RA [deg]
dec_targ	0.0	Observer's specified target Dec [deg]
ra_nom	326.00419684633	Nominal RA [deg]
dec_nom	-46.968739143596	Nominal Dec [deg]
roll_nom	45.099860790014	Nominal Roll [deg]
revision	2	Processing version of data
ontime	8274.2951544523	Sum of GTIs [s]
livetime	8169.5210470243	Livetime [s]
ontime0	8274.2951544523	Sum of GTIs [s]
ontime1	8277.4490915537	Sum of GTIs [s]
ontime2	8277.4080515504	Sum of GTIs [s]
ontime3	8274.2951544523	Sum of GTIs [s]
ontime5	8277.3670115471	Sum of GTIs [s]
ontime7	8274.2951544523	Sum of GTIs [s]
l2events	510469	Number of level 2 events

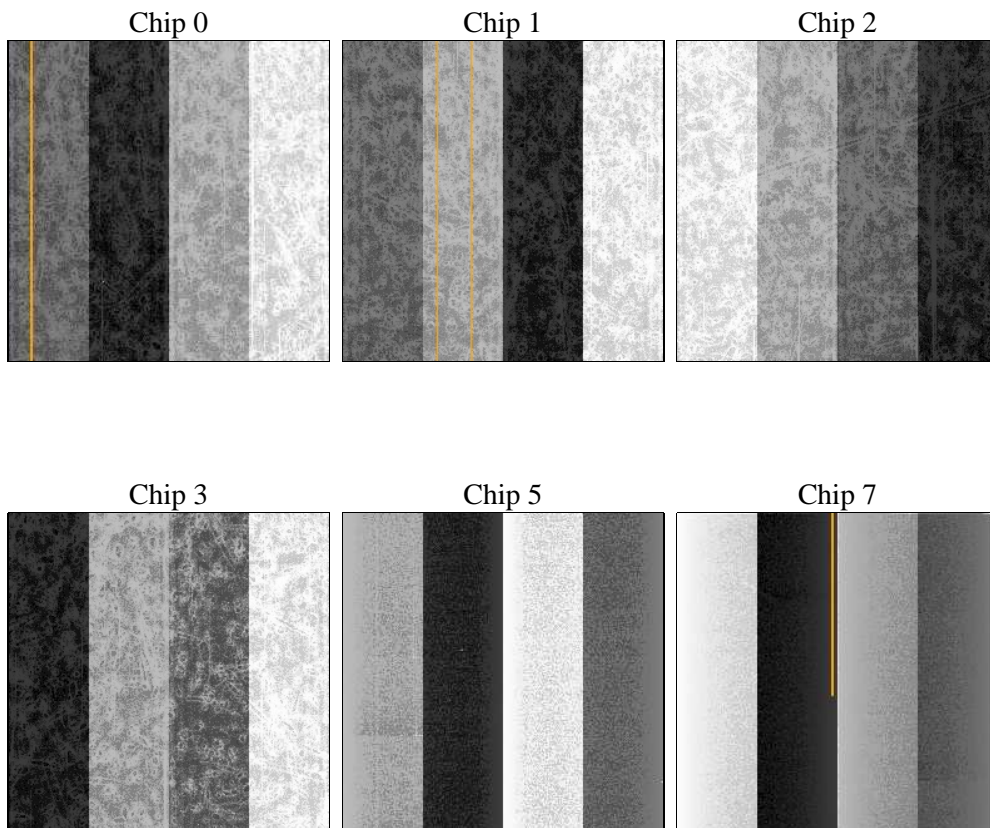
## 2 OBI

### 2.1 OBI

#### 2.1.1 Images



#### 2.1.2 Bias



### 2.1.3 Parameters

obi_num	0	Obi number	sched_exp_time	0.0	[s] Scheduled observation exposure time
ascdsver	8.4.5	Processing system revision	ontime	8274.2951544523	Sum of GTIs [s]
caldsver	4.4.10	&#160	ontime0	8274.2951544523	Sum of GTIs [s]
date	2012-06-10T15:03:09	Date and time of file creation	ontime1	8277.4490915537	Sum of GTIs [s]
revision	2	Processing version of data	ontime2	8277.4080515504	Sum of GTIs [s]
			ontime3	8274.2951544523	Sum of GTIs [s]
			ontime5	8277.3670115471	Sum of GTIs [s]
			ontime7	8274.2951544523	Sum of GTIs [s]
			l1events	993030	Number of level 1 events

### 2.1.4 Events

	ccd 0	ccd 1	ccd 2	ccd 3	ccd 5	ccd 7		ccd 0	ccd 1	ccd 2	ccd 3	ccd 5	ccd 7
level 1 events	150414	150142	154431	156495	193441	188107	grade 0 events	40209	39835	40937	41850	18038	21141
rejected events	74877	73734	78833	79600	75581	72805		26%	26%	26%	26%	9%	11%
rejected %	49%	49%	51%	50%	39%	38%	grade 1 events	333	261	345	337	298	161
								0%	0%	0%	0%	0%	0%
							grade 2 events	13809	14388	13260	13451	41522	25179
								9%	9%	8%	8%	21%	13%
							grade 3 events	5165	5096	5274	5180	5571	10551
								3%	3%	3%	3%	2%	5%
							grade 4 events	5149	5067	5148	5331	5464	10353
								3%	3%	3%	3%	2%	5%
							grade 5 events	4366	4391	4044	4612	11152	11776
								2%	2%	2%	2%	5%	6%
							grade 6 events	11205	12022	10979	11083	47265	48078
								7%	8%	7%	7%	24%	25%
							grade 7 events	70178	69082	74444	74651	64131	60868
								46%	46%	48%	47%	33%	32%

## 2.2 Compared Parameters

Parameter	Planned	Actual
Instrument	ACIS	ACIS
Detector	ACIS-012357	ACIS-012357
Grating	NONE	NONE
Data mode	FAINT	FAINT
Observation mode	SECONDARY	SECONDARY
[deg] Pointing RA	0	326.0041968463301
[deg] Pointing Dec	0	-46.96873914359576
[deg] Pointing Roll	0.0	45.09986079001353
[mm] SIM focus pos	-1.429586	-0.6828225247311905
[mm] SIM defocus	0.1037507710433287	0.8505141146731063
[mm] SIM translation stage pos	250.455976	250.466033080201
[mm] SIM translation stage offset	0	-0.01005468664627074
[s] Observation start time (MET)	364625648.29182	364625647.26683
Observation start date	2009-07-22T04:54:08	2009-07-22T04:54:07
[s] Observation end time (MET)	364641394.342607	364641393.31762
Observation end date	2009-07-22T09:16:34	2009-07-22T09:16:33
Read mode	TIMED	TIMED

Parameter	Planned	Actual
Obspar format version number	7	7
Obspar file type	PREDICTED	ACTUAL
Obspar update status	NONE	UPDATED
Number of optional ACIS chips dropped	0	0
On-chip summing requested	N	N
Subarray requested	NONE	NONE
Alternating exposures requested	N	N
[s] Primary exposure time	3.2	3.2

## 2.3 Star Slots

## 2.4 FID Slots

## A Summary

### A.1 Status

V&V Scientist	Jen Lauer
V&V Date (YYYY-MM-DD)	2012.06.13
V&V Edition	1
V&V Disposition and Status	OK
V&V Charge Time	8.2742951544523

### A.2 Comments