

V&V Reference Report

L2 ASCDS Version : 8.4.5

Observation 56933 - L2 Version 2
Chandra X-Ray Center

L2 Processing Date : Jun 10 2012

Contents

1	Front	2
2	OBI	3
2.1	OBI	3
2.1.1	Images	3
2.1.2	Bias	3
2.1.3	Parameters	4
2.1.4	Events	4
2.2	Compared Parameters	5
2.3	Star Slots	6
2.4	FID Slots	6
A	Summary	7
A.1	Status	7
A.2	Comments	7

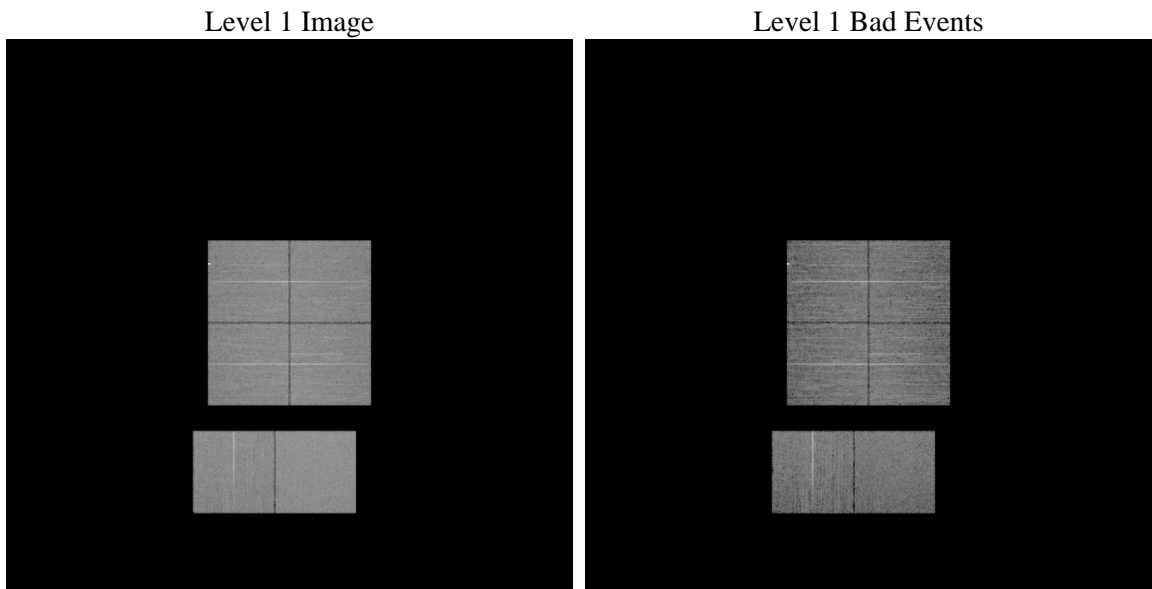
1 Front

seq_num	 	Sequence number
obs_id	56933	Observation id
title	ACIS-012367 diagnostics	Proposal title
observer	CHANDRA engineering request/realtime commanding	Principal investig
object	 	Source name
dtcycle	0	
cycle	P	events from which exps? Prim/Second/Both
ra_targ	0.0	Observer's specified target RA [deg]
dec_targ	0.0	Observer's specified target Dec [deg]
ra_nom	283.02694486554	Nominal RA [deg]
dec_nom	-30.016819251765	Nominal Dec [deg]
roll_nom	291.40348422271	Nominal Roll [deg]
revision	2	Processing version of data
ontime	8274.2300819755	Sum of GTIs [s]
livetime	8169.4567985343	Livetime [s]
ontime0	8274.1890419722	Sum of GTIs [s]
ontime1	8274.1480019689	Sum of GTIs [s]
ontime2	8274.1069619656	Sum of GTIs [s]
ontime3	8274.2711219788	Sum of GTIs [s]
ontime6	8274.0659219623	Sum of GTIs [s]
ontime7	8274.2300819755	Sum of GTIs [s]
l2events	470899	Number of level 2 events

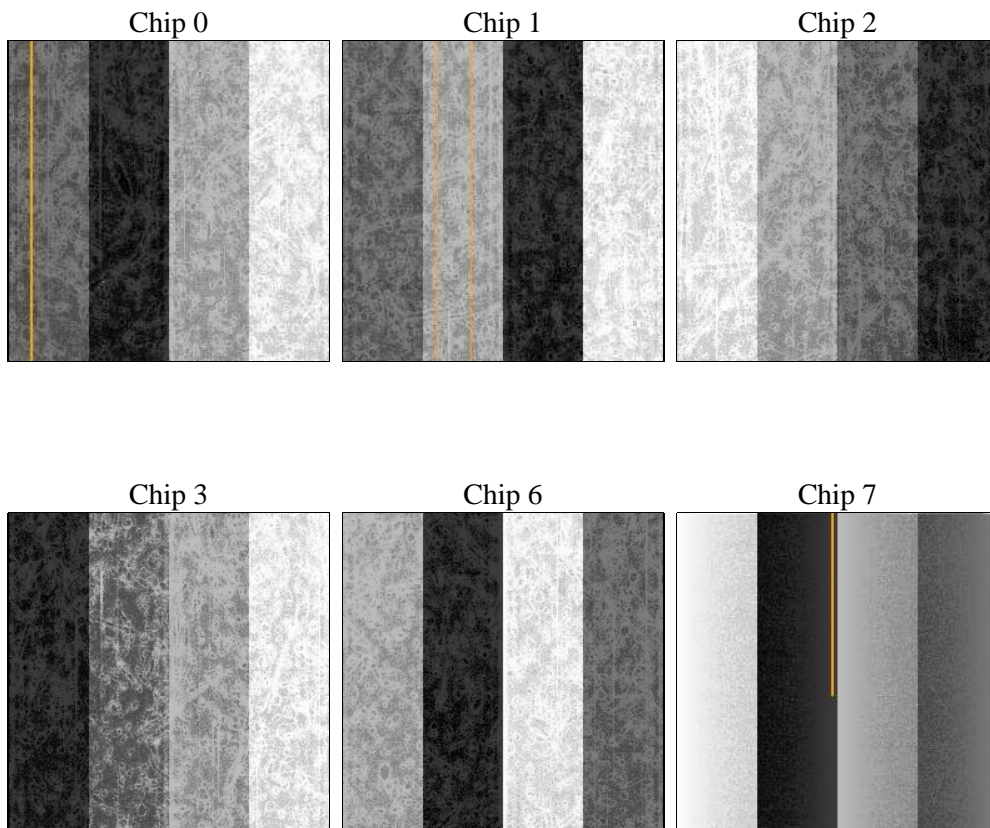
2 OBI

2.1 OBI

2.1.1 Images



2.1.2 Bias



2.1.3 Parameters

obi_num	0	Obi number	sched_exp_time	0.0	[s] Scheduled observation exposure time
ascdsver	8.4.5	Processing system revision	ontime	8274.2300819755	Sum of GTIs [s]
caldsver	4.4.10	 	ontime0	8274.1890419722	Sum of GTIs [s]
date	2012-06-11T01:26:28	Date and time of file creation	ontime1	8274.1480019689	Sum of GTIs [s]
revision	2	Processing version of data	ontime2	8274.1069619656	Sum of GTIs [s]
			ontime3	8274.2711219788	Sum of GTIs [s]
			ontime6	8274.0659219623	Sum of GTIs [s]
			ontime7	8274.2300819755	Sum of GTIs [s]
			l1events	959927	Number of level 1 events

2.1.4 Events

	ccd 0	ccd 1	ccd 2	ccd 3	ccd 6	ccd 7		ccd 0	ccd 1	ccd 2	ccd 3	ccd 6	ccd 7
level 1 events	155542	147610	154052	156567	157785	188371	grade 0 events	39920	39621	41022	41269	41340	21440
rejected events	80187	71876	78302	80556	78821	72362		25%	26%	26%	26%	26%	11%
rejected %	51%	48%	50%	51%	49%	38%	grade 1 events	300	290	340	320	275	163
								0%	0%	0%	0%	0%	0%
							grade 2 events	13808	14256	13190	13075	14032	25326
								8%	9%	8%	8%	8%	13%
							grade 3 events	5092	4972	5227	5277	5286	10828
								3%	3%	3%	3%	3%	5%
							grade 4 events	5130	5055	5179	5322	5198	10716
								3%	3%	3%	3%	3%	5%
							grade 5 events	4134	4274	3865	4693	4459	12061
								2%	2%	2%	2%	2%	6%
							grade 6 events	11405	11830	11132	11068	13108	47699
								7%	8%	7%	7%	8%	25%
							grade 7 events	75753	67312	74097	75543	74087	60138
								48%	45%	48%	48%	46%	31%

2.2 Compared Parameters

Parameter	Planned	Actual
Instrument	ACIS	ACIS
Detector	ACIS-012367	ACIS-012367
Grating	NONE	NONE
Data mode	FAINT	FAINT
Observation mode	SECONDARY	SECONDARY
[deg] Pointing RA	0	283.0269448655432
[deg] Pointing Dec	0	-30.01681925176494
[deg] Pointing Roll	0.0	291.403484222713
[mm] SIM focus pos	-1.429586	-0.6828225247311905
[mm] SIM defocus	0.1037507710433287	0.8505141146731063
[mm] SIM translation stage pos	250.455976	250.466033080201
[mm] SIM translation stage offset	0	-0.01005468664627074
[s] Observation start time (MET)	365081808.16464	365081807.13967
Observation start date	2009-07-27T11:36:48	2009-07-27T11:36:47
[s] Observation end time (MET)	365091666.615133	365091665.59016
Observation end date	2009-07-27T14:21:07	2009-07-27T14:21:05
Read mode	TIMED	TIMED

Parameter	Planned	Actual
Obspar format version number	7	7
Obspar file type	PREDICTED	ACTUAL
Obspar update status	NONE	UPDATED
Number of optional ACIS chips dropped	0	0
On-chip summing requested	N	N
Subarray requested	NONE	NONE
Alternating exposures requested	N	N
[s] Primary exposure time	3.2	3.2

2.3 Star Slots

2.4 FID Slots

A Summary

A.1 Status

V&V Scientist	Jen Lauer
V&V Date (YYYY-MM-DD)	2012.06.14
V&V Edition	1
V&V Disposition and Status	OK
V&V Charge Time	8.2742300819755

A.2 Comments