

V&V Reference Report

L2 ASCDS Version : 8.4.5

Observation 56333 - L2 Version 2
Chandra X-Ray Center

L2 Processing Date : Jun 24 2012

Contents

1	Front	2
2	OBI	3
2.1	OBI	3
2.1.1	Images	3
2.1.2	Bias	3
2.1.3	Parameters	4
2.1.4	Events	4
2.2	Compared Parameters	5
2.3	Star Slots	6
2.4	FID Slots	6
A	Summary	7
A.1	Status	7
A.2	Comments	7

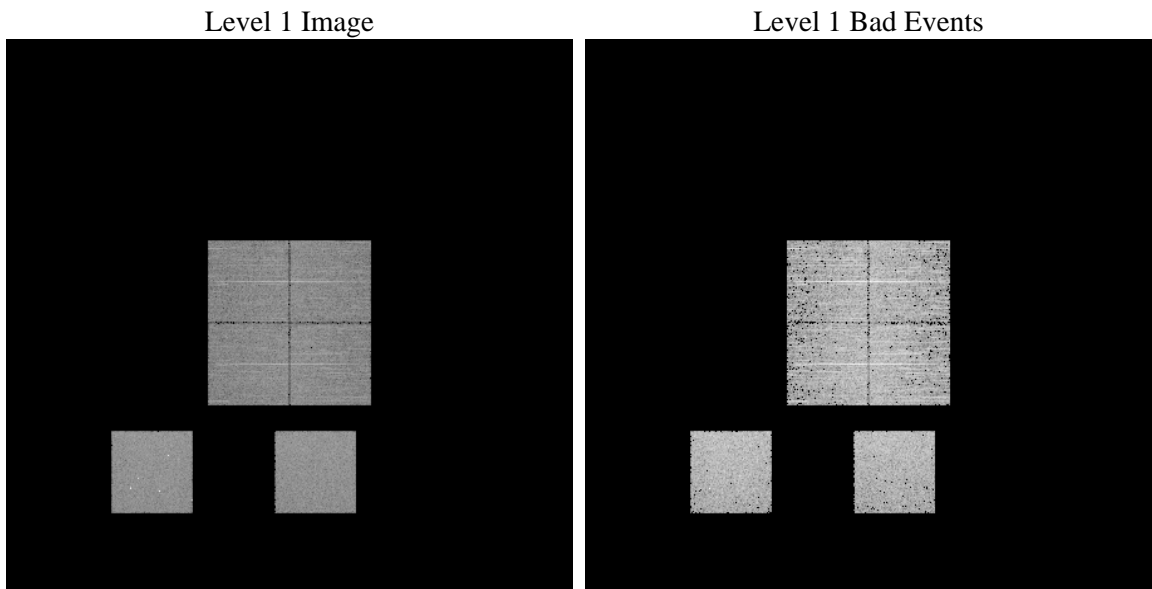
1 Front

seq_num	 	Sequence number
obs_id	56333	Observation id
title	ACIS-012357 diagnostics	Proposal title
observer	CHANDRA engineering request/realtime commanding	Principal investig
object	 	Source name
dtcycle	0	
cycle	P	events from which exps? Prim/Second/Both
ra_targ	0.0	Observer's specified target RA [deg]
dec_targ	0.0	Observer's specified target Dec [deg]
ra_nom	203.07224634602	Nominal RA [deg]
dec_nom	-33.994653729024	Nominal Dec [deg]
roll_nom	359.36352296604	Nominal Roll [deg]
revision	2	Processing version of data
ontime	3284.8875806332	Sum of GTIs [s]
livetime	3243.2923561653	Livetime [s]
ontime0	3284.8465406299	Sum of GTIs [s]
ontime1	3284.8055006266	Sum of GTIs [s]
ontime2	3284.7644606233	Sum of GTIs [s]
ontime3	3284.9286206365	Sum of GTIs [s]
ontime5	3284.72342062	Sum of GTIs [s]
ontime7	3284.8875806332	Sum of GTIs [s]
l2events	172602	Number of level 2 events

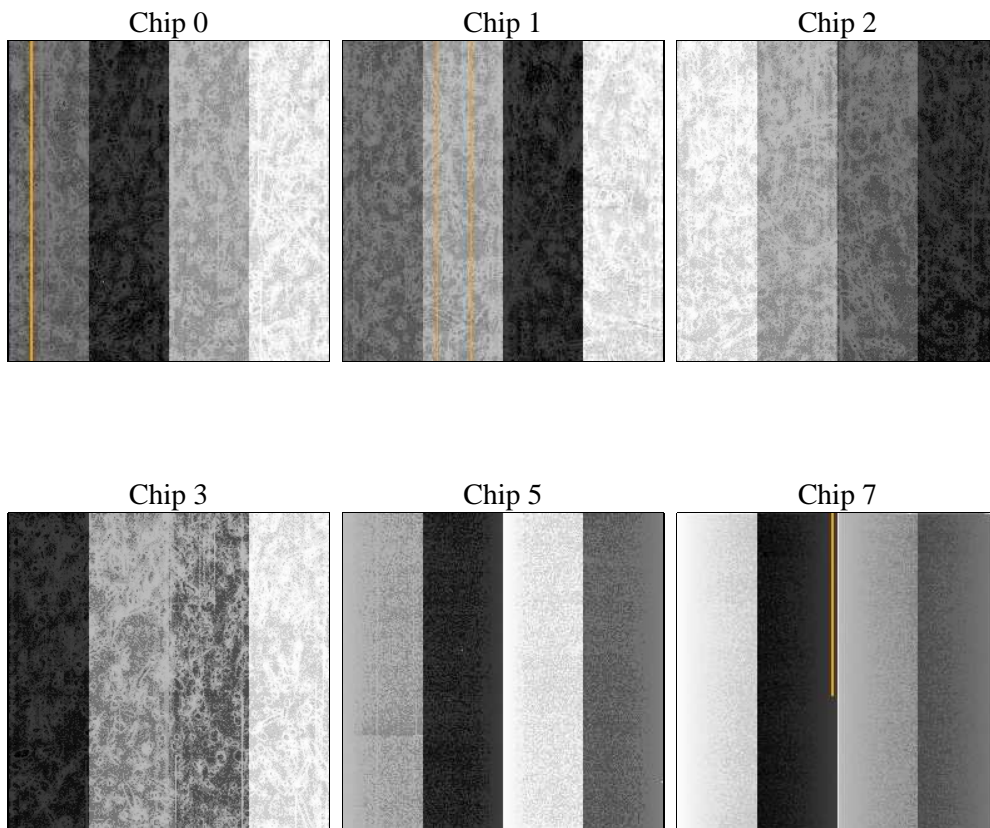
2 OBI

2.1 OBI

2.1.1 Images



2.1.2 Bias



2.1.3 Parameters

obi_num	1	Obi number	sched_exp_time	0.0	[s] Scheduled observation exposure time
ascdsver	8.4.5	Processing system revision	ontime	3284.8875806332	Sum of GTIs [s]
caldbver	4.4.10	 	ontime0	3284.8465406299	Sum of GTIs [s]
date	2012-06-24T09:49:57	Date and time of file creation	ontime1	3284.8055006266	Sum of GTIs [s]
revision	2	Processing version of data	ontime2	3284.7644606233	Sum of GTIs [s]
			ontime3	3284.9286206365	Sum of GTIs [s]
			ontime5	3284.72342062	Sum of GTIs [s]
			ontime7	3284.8875806332	Sum of GTIs [s]
			l1events	336935	Number of level 1 events

2.1.4 Events

	ccd 0	ccd 1	ccd 2	ccd 3	ccd 5	ccd 7		ccd 0	ccd 1	ccd 2	ccd 3	ccd 5	ccd 7
level 1 events	49474	50471	50797	53209	68140	64844	grade 0 events	13479	13353	13766	13791	6683	7084
rejected events	24067	24759	25339	27585	26911	25371		27%	26%	27%	25%	9%	10%
rejected %	48%	49%	49%	51%	39%	39%	grade 1 events	96	84	92	91	111	55
								0%	0%	0%	0%	0%	0%
							grade 2 events	4630	4927	4436	4577	14406	8625
								9%	9%	8%	8%	21%	13%
							grade 3 events	1780	1662	1744	1722	1779	3616
								3%	3%	3%	3%	2%	5%
							grade 4 events	1755	1683	1704	1722	1737	3532
								3%	3%	3%	3%	2%	5%
							grade 5 events	1491	1601	1415	1770	3564	4117
								3%	3%	2%	3%	5%	6%
							grade 6 events	3763	4087	3808	3812	16663	16616
								7%	8%	7%	7%	24%	25%
							grade 7 events	22480	23074	23832	25724	23197	21199
								45%	45%	46%	48%	34%	32%

2.2 Compared Parameters

Parameter	Planned	Actual	Parameter	Planned	Actual
Instrument	ACIS	ACIS	Obspar format version number	7	7
Detector	ACIS-012357	ACIS-012357	Obspar file type	PREDICTED	ACTUAL
Grating	NONE	NONE	Obspar update status	NONE	UPDATED
Data mode	FAINT	FAINT	Number of optional ACIS chips dropped	0	0
Observation mode	SECONDARY	SECONDARY	On-chip summing requested	N	N
[deg] Pointing RA	0	203.072246346019	Subarray requested	NONE	NONE
[deg] Pointing Dec	0	-33.99465372902387	Alternating exposures requested	N	N
[deg] Pointing Roll	0.0	359.3635229660408	[s] Primary exposure time	3.2	3.2
[mm] SIM focus pos	-1.429586	-0.6828225247311905			
[mm] SIM defocus	0.1037507710433287	0.8505141146731063			
[mm] SIM translation stage pos	250.455976	250.466033080201			
[mm] SIM translation stage offset	0	-0.01005468664627074			
[s] Observation start time (MET)	387706542.056288	387706541.03128			
Observation start date	2010-04-15T08:15:42	2010-04-15T08:15:41			
[s] Observation end time (MET)	387712327.156582	387712326.13157			
Observation end date	2010-04-15T09:52:07	2010-04-15T09:52:06			
Read mode	TIMED	TIMED			

2.3 Star Slots

2.4 FID Slots

A Summary

A.1 Status

V&V Scientist	Jen Lauer
V&V Date (YYYY-MM-DD)	2012.06.29
V&V Edition	1
V&V Disposition and Status	OK
V&V Charge Time	3.2848875806332

A.2 Comments