

V&V Reference Report

L2 ASCDS Version : 8.4.5

Observation 55783 - L2 Version 2
Chandra X-Ray Center

L2 Processing Date : Jul 8 2012

Contents

1	Front	2
2	OBI	3
2.1	OBI	3
2.1.1	Images	3
2.1.2	Bias	3
2.1.3	Parameters	4
2.1.4	Events	4
2.2	Compared Parameters	5
2.3	Star Slots	6
2.4	FID Slots	6
A	Summary	7
A.1	Status	7
A.2	Comments	7

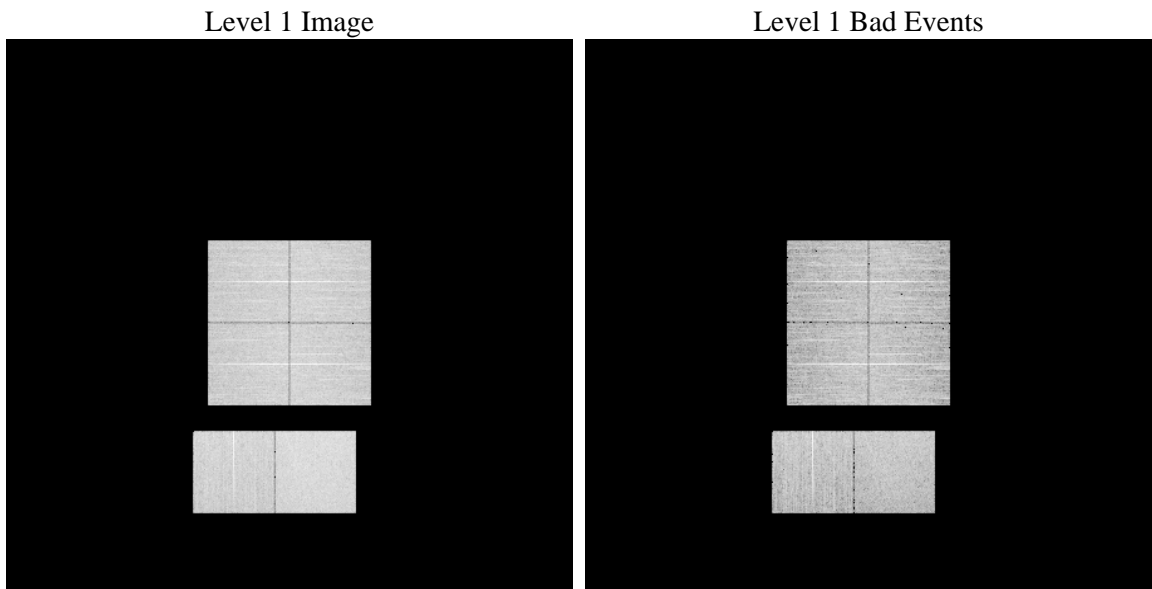
1 Front

seq_num	 	Sequence number
obs_id	55783	Observation id
title	ACIS-012367 diagnostics	Proposal title
observer	CHANDRA engineering request/realtime commanding	Principal investig
object	 	Source name
dtcycle	0	
cycle	P	events from which exps? Prim/Second/Both
ra_targ	0.0	Observer's specified target RA [deg]
dec_targ	0.0	Observer's specified target Dec [deg]
ra_nom	98.021167157016	Nominal RA [deg]
dec_nom	-1.9804786434868	Nominal Dec [deg]
roll_nom	9.7037628865994	Nominal Roll [deg]
revision	2	Processing version of data
ontime	8108.799969852	Sum of GTIs [s]
livetime	8006.1214621005	Livetime [s]
ontime0	8108.799969852	Sum of GTIs [s]
ontime1	8108.799969852	Sum of GTIs [s]
ontime2	8108.799969852	Sum of GTIs [s]
ontime3	8108.799969852	Sum of GTIs [s]
ontime6	8108.799969852	Sum of GTIs [s]
ontime7	8108.799969852	Sum of GTIs [s]
l2events	342982	Number of level 2 events

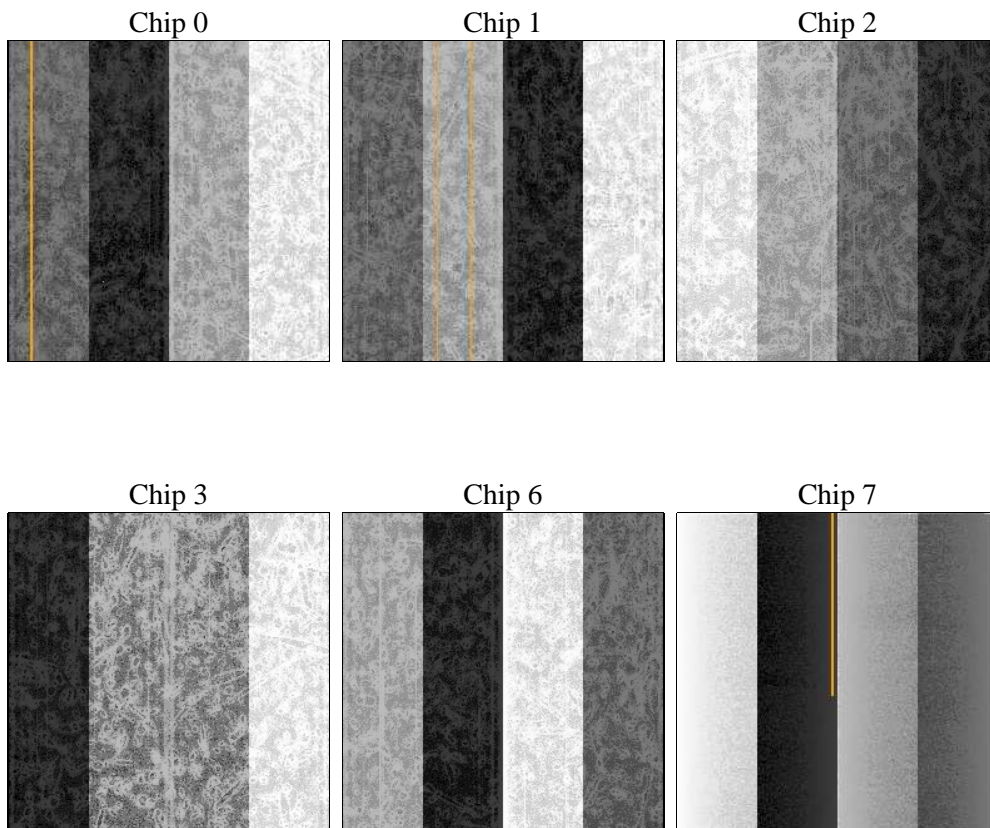
2 OBI

2.1 OBI

2.1.1 Images



2.1.2 Bias



2.1.3 Parameters

obi_num	1	Obi number	sched_exp_time	0.0	[s] Scheduled observation exposure time
ascdsver	8.4.5	Processing system revision	ontime	8108.799969852	Sum of GTIs [s]
caldsver	4.5.0	 	ontime0	8108.799969852	Sum of GTIs [s]
date	2012-07-08T21:33:33	Date and time of file creation	ontime1	8108.799969852	Sum of GTIs [s]
revision	2	Processing version of data	ontime2	8108.799969852	Sum of GTIs [s]
			ontime3	8108.799969852	Sum of GTIs [s]
			ontime6	8108.799969852	Sum of GTIs [s]
			ontime7	8108.799969852	Sum of GTIs [s]
			l1events	745926	Number of level 1 events

2.1.4 Events

	ccd 0	ccd 1	ccd 2	ccd 3	ccd 6	ccd 7		ccd 0	ccd 1	ccd 2	ccd 3	ccd 6	ccd 7
level 1 events	114129	118992	116715	119775	123255	153060	grade 0 events	29409	28604	30006	30248	29956	15480
rejected events	59221	64190	62193	64811	66450	65977		25%	24%	25%	25%	24%	10%
rejected %	51%	53%	53%	54%	53%	43%	grade 1 events	181	159	232	197	190	124
								0%	0%	0%	0%	0%	0%
							grade 2 events	10445	10951	9857	9820	10616	19233
								9%	9%	8%	8%	8%	12%
							grade 3 events	3804	3824	3868	3951	3881	8073
								3%	3%	3%	3%	3%	5%
							grade 4 events	3729	3805	3763	3843	3743	7973
								3%	3%	3%	3%	3%	5%
							grade 5 events	3692	3873	3587	4080	3965	10275
								3%	3%	3%	3%	3%	6%
							grade 6 events	8734	8887	8327	8301	9933	38223
								7%	7%	7%	6%	8%	24%
							grade 7 events	54135	58889	57075	59335	60971	53679
								47%	49%	48%	49%	49%	35%

2.2 Compared Parameters

Parameter	Planned	Actual	Parameter	Planned	Actual
Instrument	ACIS	ACIS	Obspar format version number	7	7
Detector	ACIS-012367	ACIS-012367	Obspar file type	PREDICTED	ACTUAL
Grating	NONE	NONE	Obspar update status	OVERRIDE	OVERRIDE
Data mode	FAINT	FAINT	Number of optional ACIS chips dropped	0	0
Observation mode	SECONDARY	SECONDARY	On-chip summing requested	N	N
[deg] Pointing RA	0	98.02116715701628	Subarray requested	NONE	NONE
[deg] Pointing Dec	0	-1.980478643486812	Alternating exposures requested	N	N
[deg] Pointing Roll	0.0	9.703762886599385	[s] Primary exposure time	3.2	3.2
[mm] SIM focus pos	-1.4281808131	-1.4281808131			
[mm] SIM defocus	0.1051557500557434	0.1051557500557434			
[mm] SIM translation stage pos	250.4660330802	250.4660330802			
[mm] SIM translation stage offset	-0.01005726120527584	-0.01005726120527584			
[s] Observation start time (MET)	409638234.479669	409638234.479669			
Observation start date	2010-12-25T04:23:54	2010-12-25T04:23:54			
[s] Observation end time (MET)	409647784.003222	409647784.003222			
Observation end date	2010-12-25T07:03:04	2010-12-25T07:03:04			
Read mode	TIMED	TIMED			

2.3 Star Slots

2.4 FID Slots

A Summary

A.1 Status

V&V Scientist	Jen Lauer
V&V Date (YYYY-MM-DD)	2012.07.17
V&V Edition	1
V&V Disposition and Status	OK
V&V Charge Time	8.108799969852

A.2 Comments