

# V&V Reference Report

## L2 ASCDS Version : 7.6.7.1

Observation 5563 - L2 Version 002  
Chandra X-Ray Center

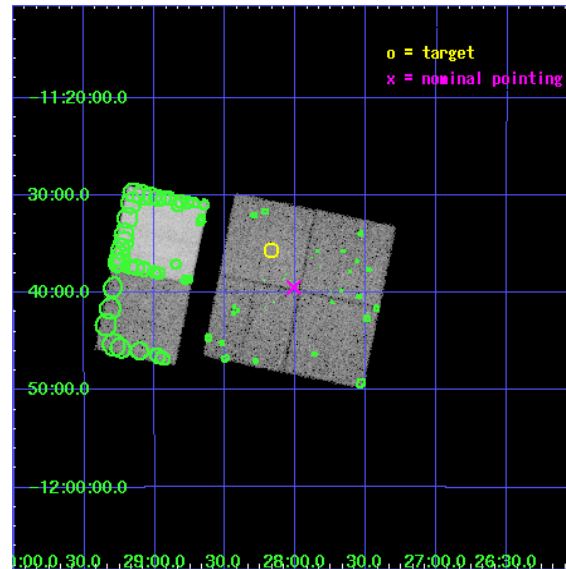
L2 Processing Date : Apr 4 2006

## Contents

<b>1</b>	<b>Front</b>	<b>2</b>
<b>2</b>	<b>OBI</b>	<b>3</b>
2.1	OBI . . . . .	3
2.1.1	Images . . . . .	3
2.1.2	Bias . . . . .	3
2.1.3	Parameters . . . . .	4
2.1.4	Events . . . . .	4
2.2	Compared Parameters . . . . .	5
2.3	Aspect . . . . .	6
2.4	Star Slots . . . . .	9
2.4.1	Slot 3 . . . . .	9
2.4.2	Slot 4 . . . . .	10
2.4.3	Slot 5 . . . . .	11
2.4.4	Slot 6 . . . . .	12
2.4.5	Slot 7 . . . . .	13
2.5	FID Slots . . . . .	14
2.5.1	Slot 0 . . . . .	14
2.5.2	Slot 1 . . . . .	15
2.5.3	Slot 2 . . . . .	16
<b>3</b>	<b>Point Sources</b>	<b>17</b>
<b>A</b>	<b>Summary</b>	<b>18</b>
A.1	Status . . . . .	18
A.2	Comments . . . . .	18

# 1 Front

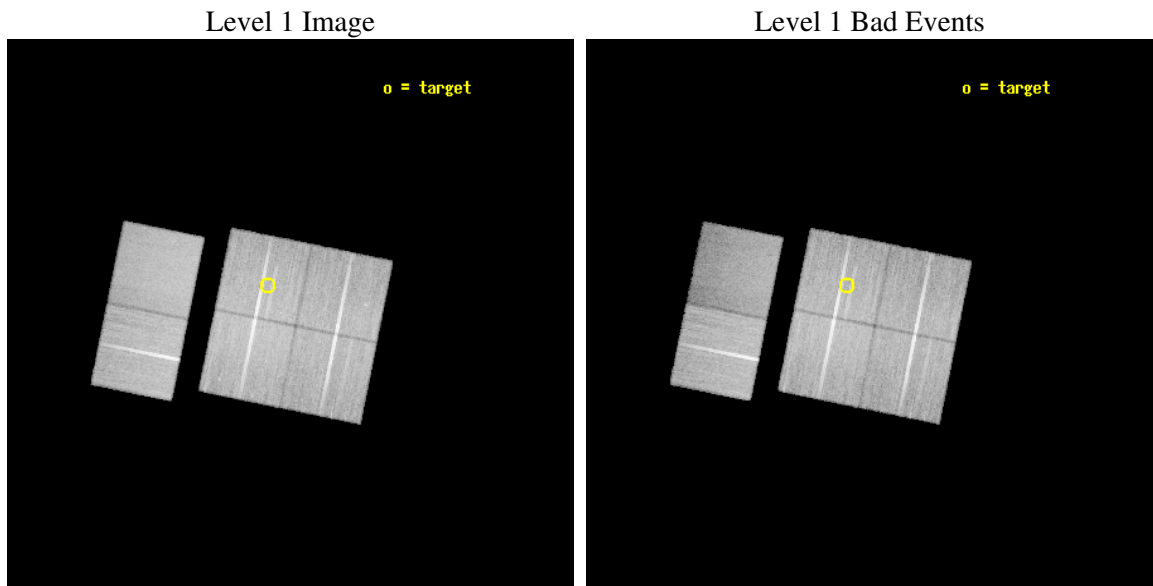
seq_num	500552
obs_id	5563
title	G20.0-0.2: REVEALING A MODEST CRAB-LIKE SUPERNOVA REMNANT
observer	Prof. David Helfand
object	G20.0-0.2
dtcycle	0
cycle	P
ra_targ	277.044167
dec_targ	-11.594667
ra_nom	277.00315102205
dec_nom	-11.658030822826
roll_nom	281.49598070147
revision	2
ontime	35155.158898711
livetime	34710.00310884
ontime0	35158.399869025
ontime1	35158.399869025
ontime2	35155.158908725
ontime3	35155.158898711
ontime6	35151.918008149
ontime7	35158.399869025
l2events	188179



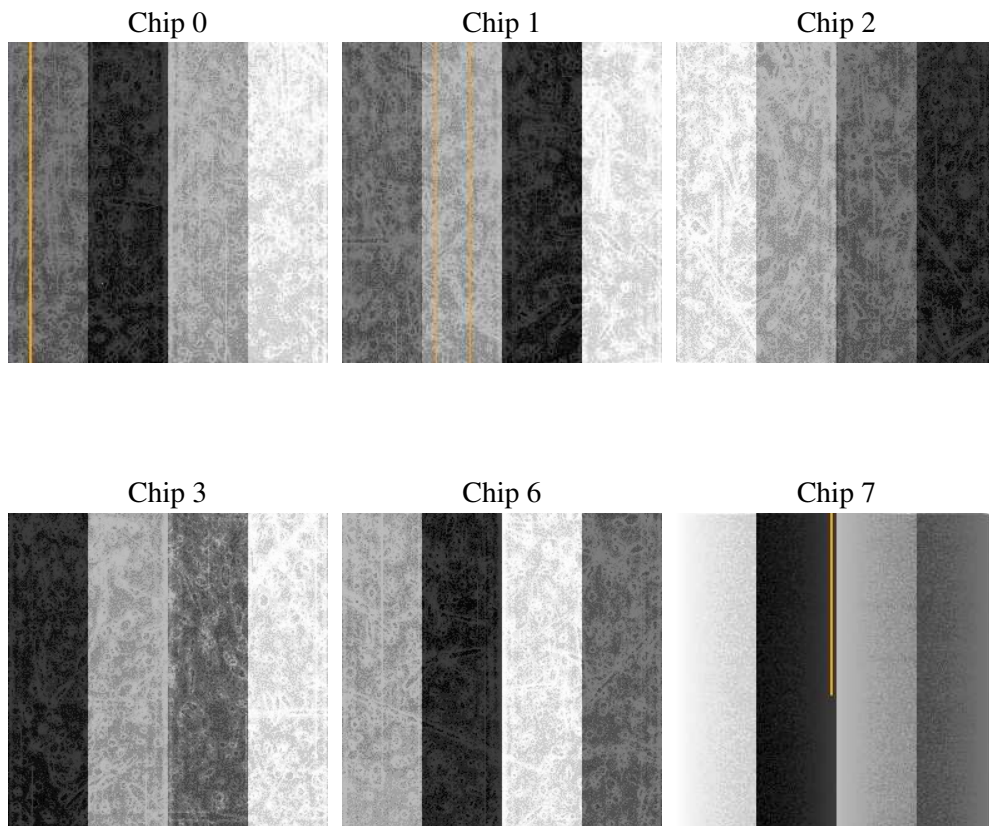
## 2 OBI

### 2.1 OBI

#### 2.1.1 Images



#### 2.1.2 Bias



### 2.1.3 Parameters

obi_num	0
ascdsver	7.6.7.1
caldsver	3.2.1
date	2006-04-04T18:42:15
revision	2

sched_exp_time	35000.000000
ontime	35621.862563878
ontime0	35625.103534192
ontime1	35625.103534192
ontime2	35621.862603843
ontime3	35621.862563878
ontime6	35618.621673316
ontime7	35625.103564143
l1events	1316203

### 2.1.4 Events

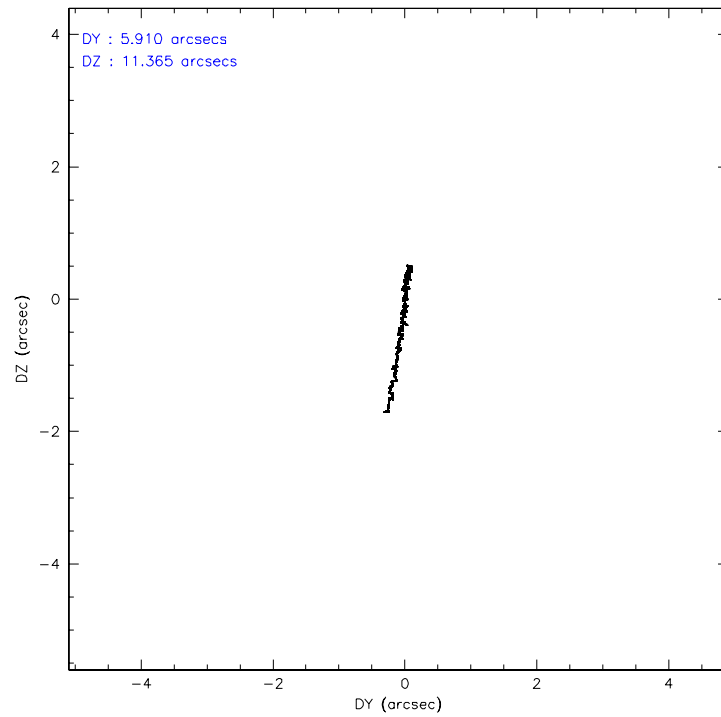
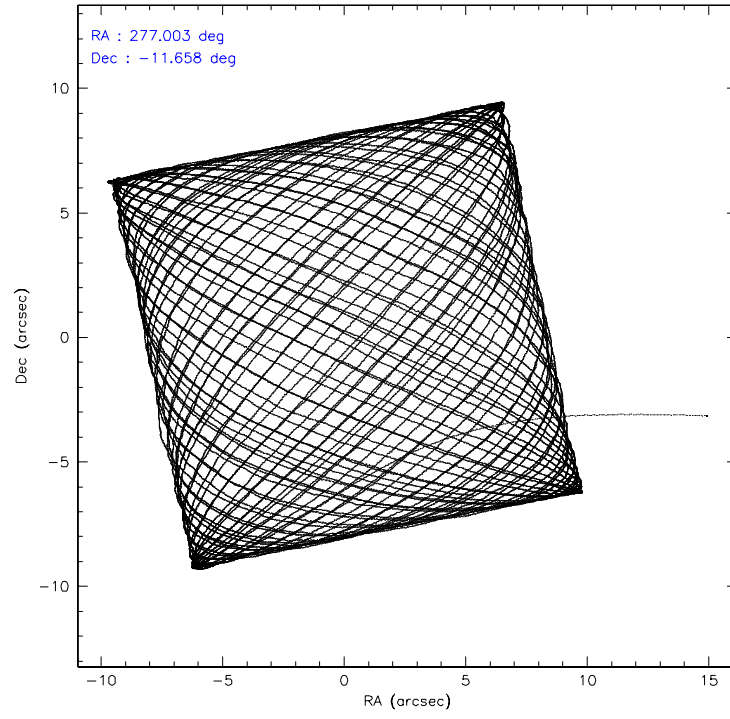
	ccd 0	ccd 1	ccd 2	ccd 3	ccd 6	ccd 7
level 1 events	207650	203686	243751	221742	228694	210680
rejected events	185287	179561	220965	198213	205581	120019
rejected %	89%	88%	90%	89%	89%	56%

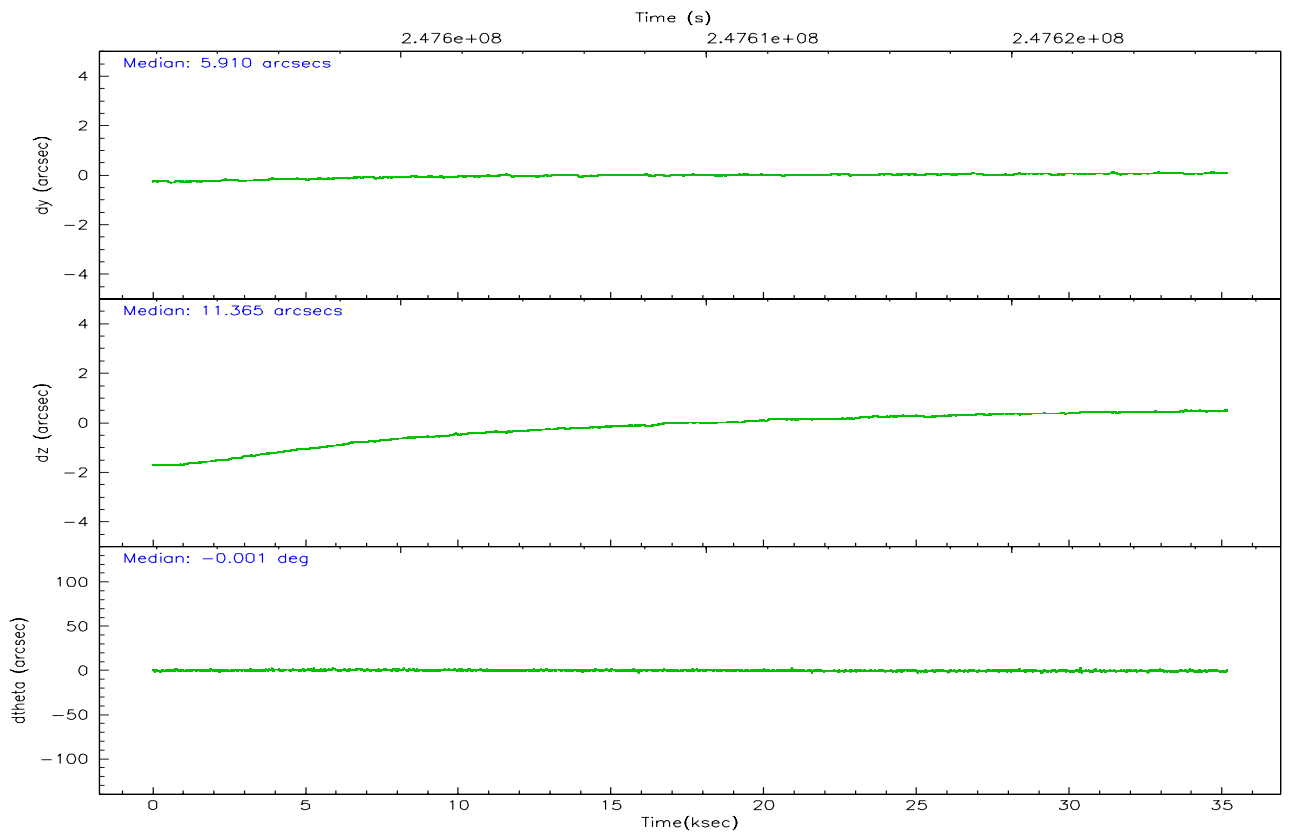
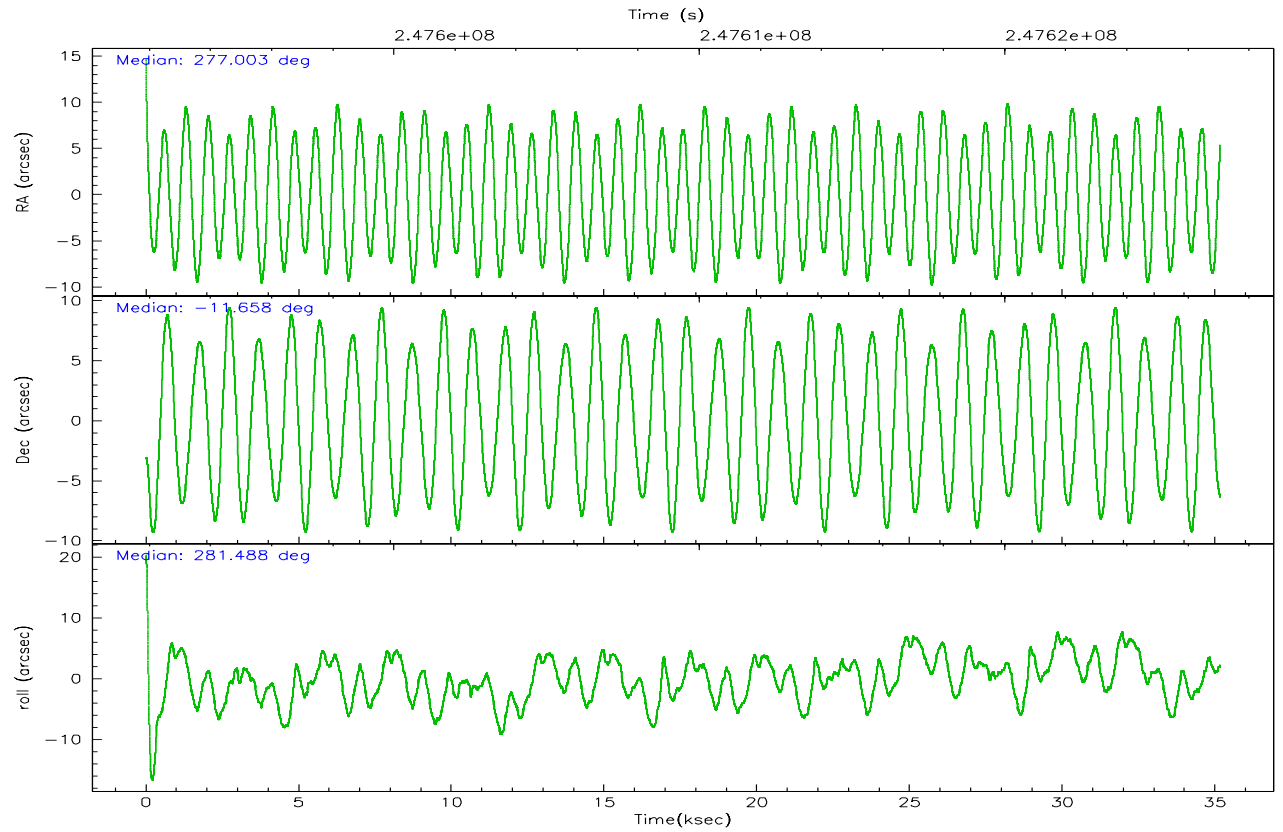
	ccd 0	ccd 1	ccd 2	ccd 3	ccd 6	ccd 7
grade 0 events	9109	9386	9729	10210	8667	5253
	4%	4%	3%	4%	3%	2%
grade 1 events	101	85	124	141	105	122
	0%	0%	0%	0%	0%	0%
grade 2 events	4994	5099	4999	4681	4904	22071
	2%	2%	2%	2%	2%	10%
grade 3 events	2453	2588	2284	2416	2619	4578
	1%	1%	0%	1%	1%	2%
grade 4 events	2258	2642	2391	2397	2390	4425
	1%	1%	0%	1%	1%	2%
grade 5 events	6480	7404	5928	7944	8066	16293
	3%	3%	2%	3%	3%	7%
grade 6 events	3861	4718	3655	4104	4829	55475
	1%	2%	1%	1%	2%	26%
grade 7 events	178394	171764	214641	189849	197114	102463
	85%	84%	88%	85%	86%	48%

## 2.2 Compared Parameters

Parameter	Planned	Actual	Parameter	Planned	Actual
Instrument	ACIS	ACIS	Obspar format version number	6	6
Detector	ACIS-012367	ACIS-012367	Obspar file type	PREDICTED	ACTUAL
Grating	NONE	NONE	Obspar update status	NONE	UPDATED
Data mode	VFAINT	VFAINT	On-chip summing requested	N	N
Observation mode	POINTING	POINTING	Subarray requested	NONE	NONE
Pointing RA	276.984550	277.0031510220491	Alternating exposures requested	N	N
Pointing Dec	-11.637591	-11.658030822826	Primary exposure time	0.000000	3.2
Pointing Roll	281.283533	281.4959807014657			
SIM focus pos (mm)	-0.782348	-0.7823481983384333			
SIM defocus (mm)	0	1.724155329618782e-08			
SIM translation stage pos (mm)	-233.592463	-233.5874344608287			
SIM translation stage offset (mm)	0	-0.005018542100998502			
Observation start time	247592060.184000	247590767.22832			
Observation start date	2005-11-05T15:33:16	2005-11-05T15:12:47			
Observation end time	247627060.184000	247628111.05504			
Observation end date	2005-11-06T01:16:36	2005-11-06T01:35:11			
Read mode	TIMED	TIMED			

## 2.3 Aspect





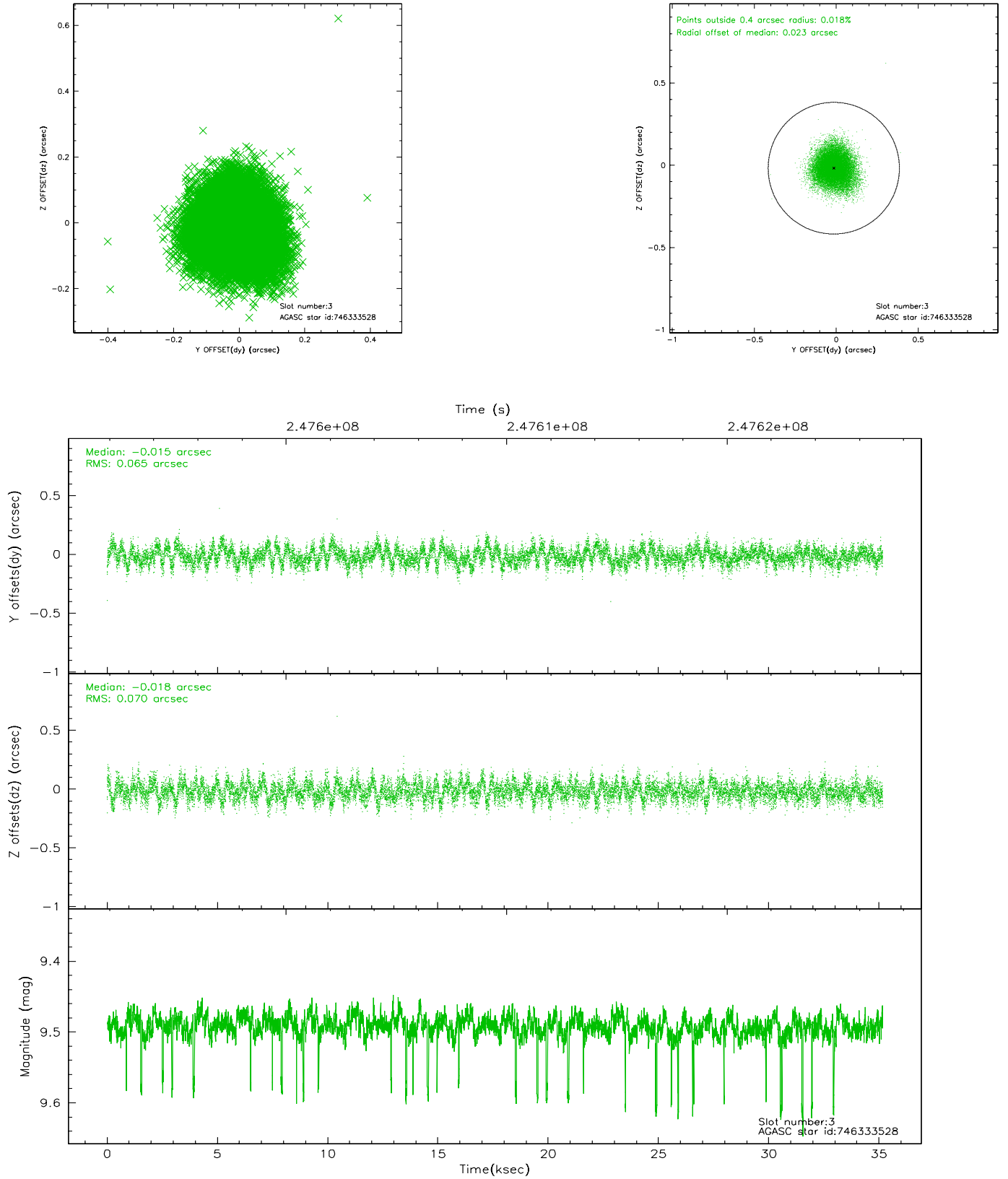
### Slot Statistics

slot	status	id	mag	n_pts	med_dy	med_dz	dr1	dr2	ra	dec	mean_y	mean_z
0	FID	ACIS-I-4	7.17	8576	0.012	0.062	0.019	0.040	0.000000	0.000000	2153.81	1065.26
1	FID	ACIS-I-5	7.23	8578	-0.136	0.042	0.016	0.033	0.000000	0.000000	-1814.24	1063.09
2	FID	ACIS-I-6	7.25	8578	0.024	-0.037	0.030	0.058	0.000000	0.000000	399.37	1707.33
3	GUIDE	746333528	9.49	17058	-0.015	-0.018	0.102	0.163	276.260240	-11.194646	-2060.66	-2197.09
4	GUIDE	746875824	9.97	17126	0.093	-0.006	0.120	0.195	276.821705	-11.868839	704.64	-725.17
5	GUIDE	746879016	8.66	17147	-0.038	0.063	0.070	0.113	276.761226	-11.412176	-949.37	-613.83
6	GUIDE	746885112	8.08	17156	0.005	-0.006	0.063	0.100	276.677725	-11.356892	-1202.00	-864.22
7	GUIDE	746888840	9.63	17088	-0.050	-0.038	0.107	0.176	277.153434	-11.799400	687.94	470.04

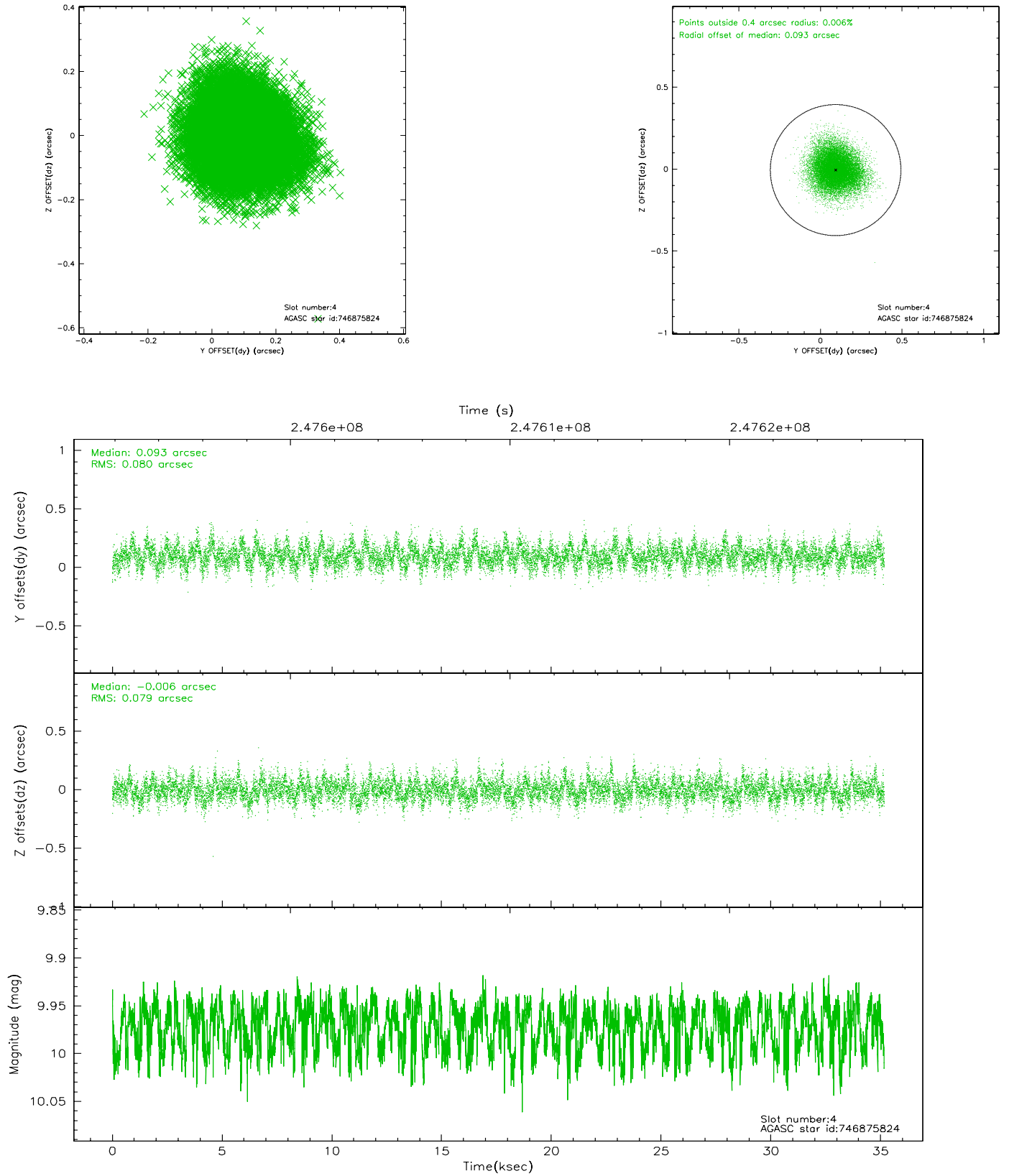


## 2.4 Star Slots

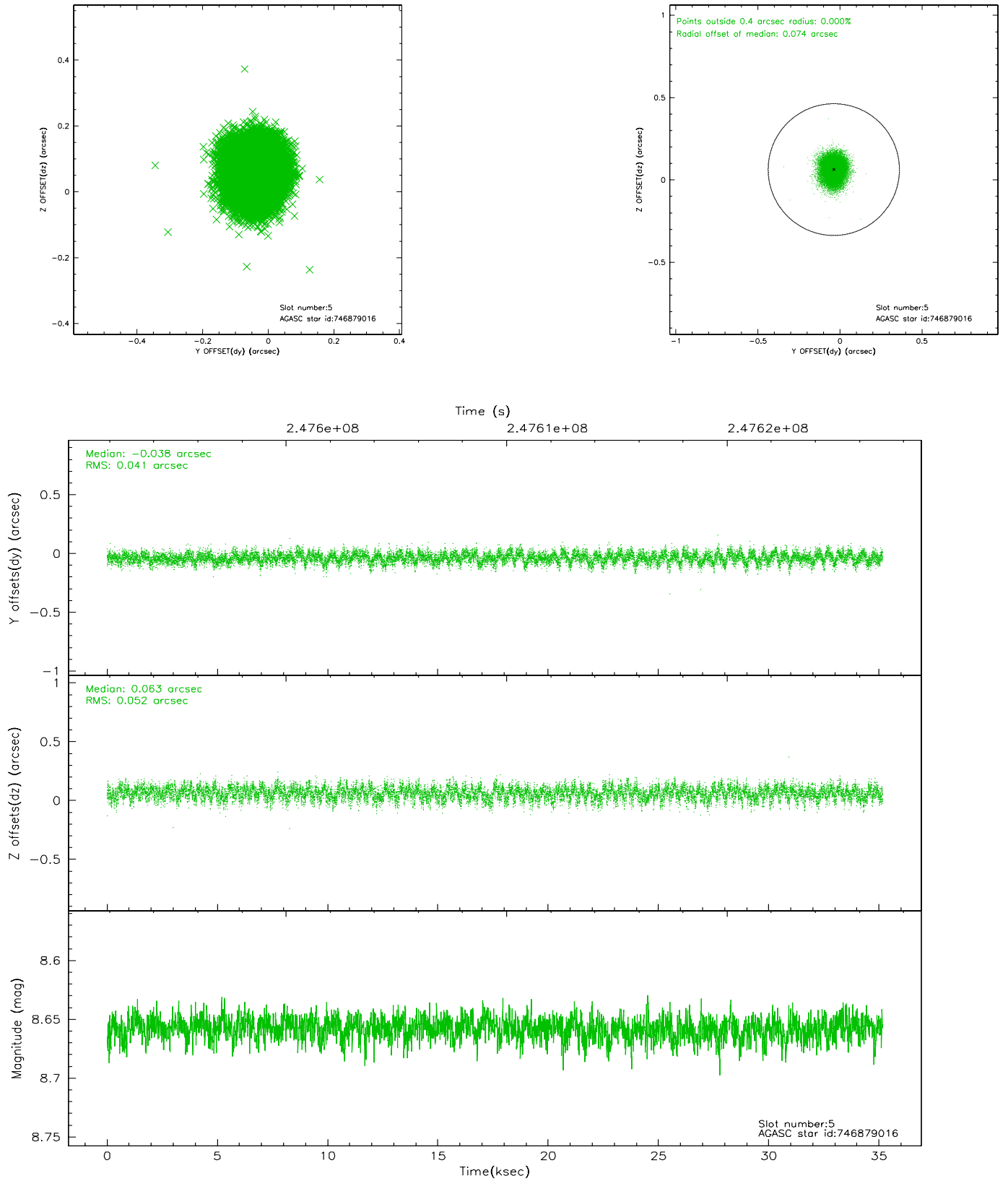
### 2.4.1 Slot 3



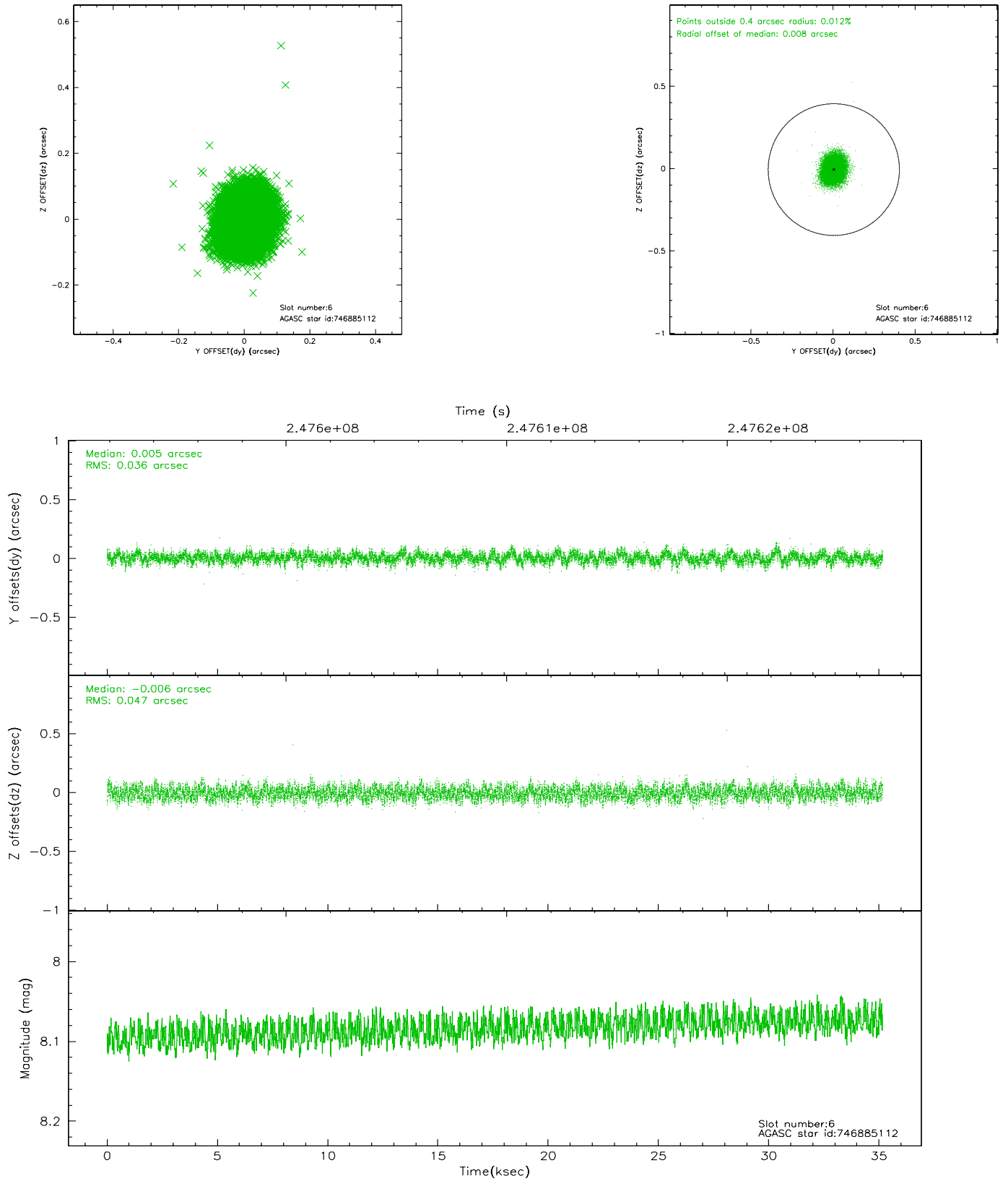
## 2.4.2 Slot 4



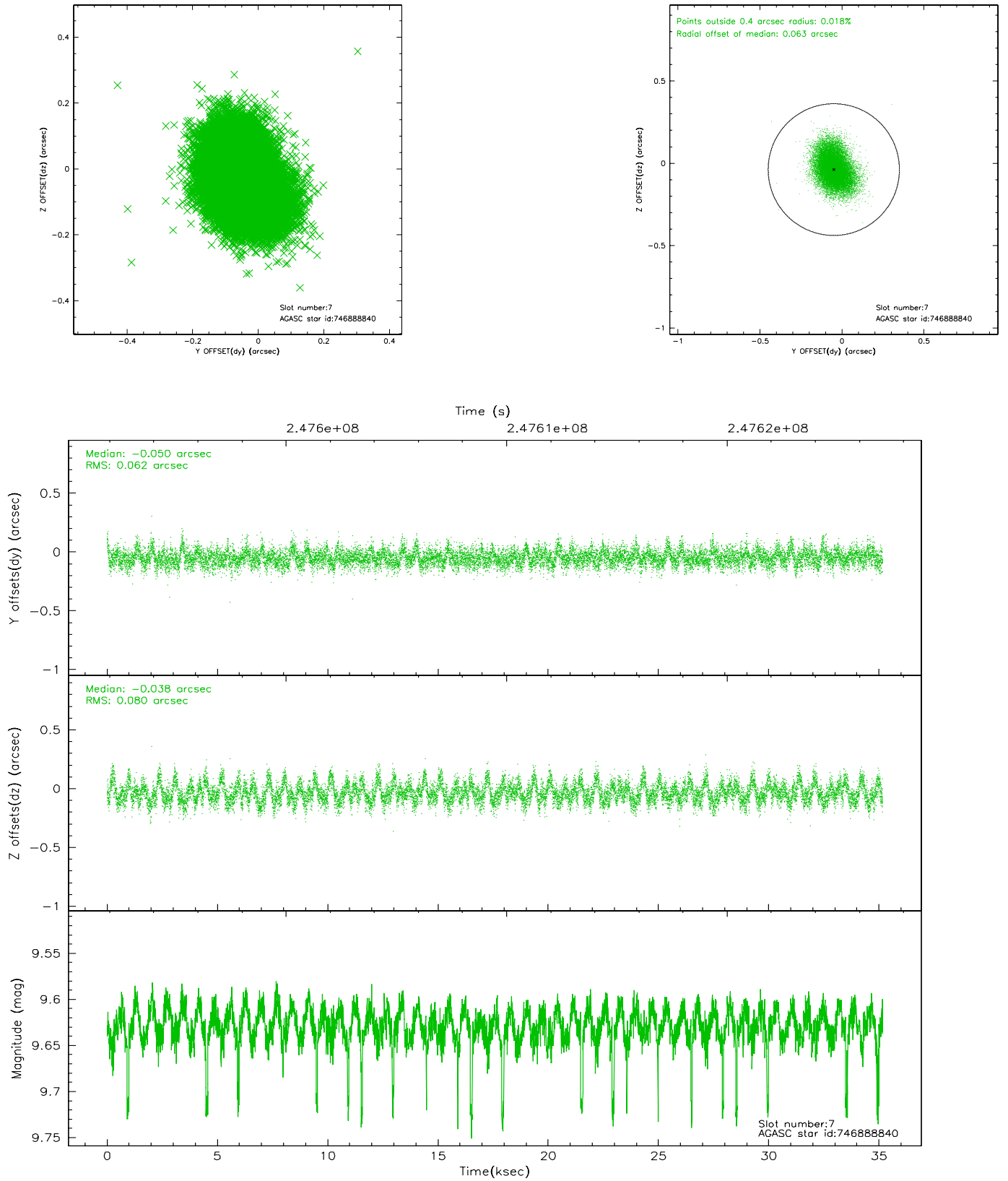
### 2.4.3 Slot 5



## 2.4.4 Slot 6

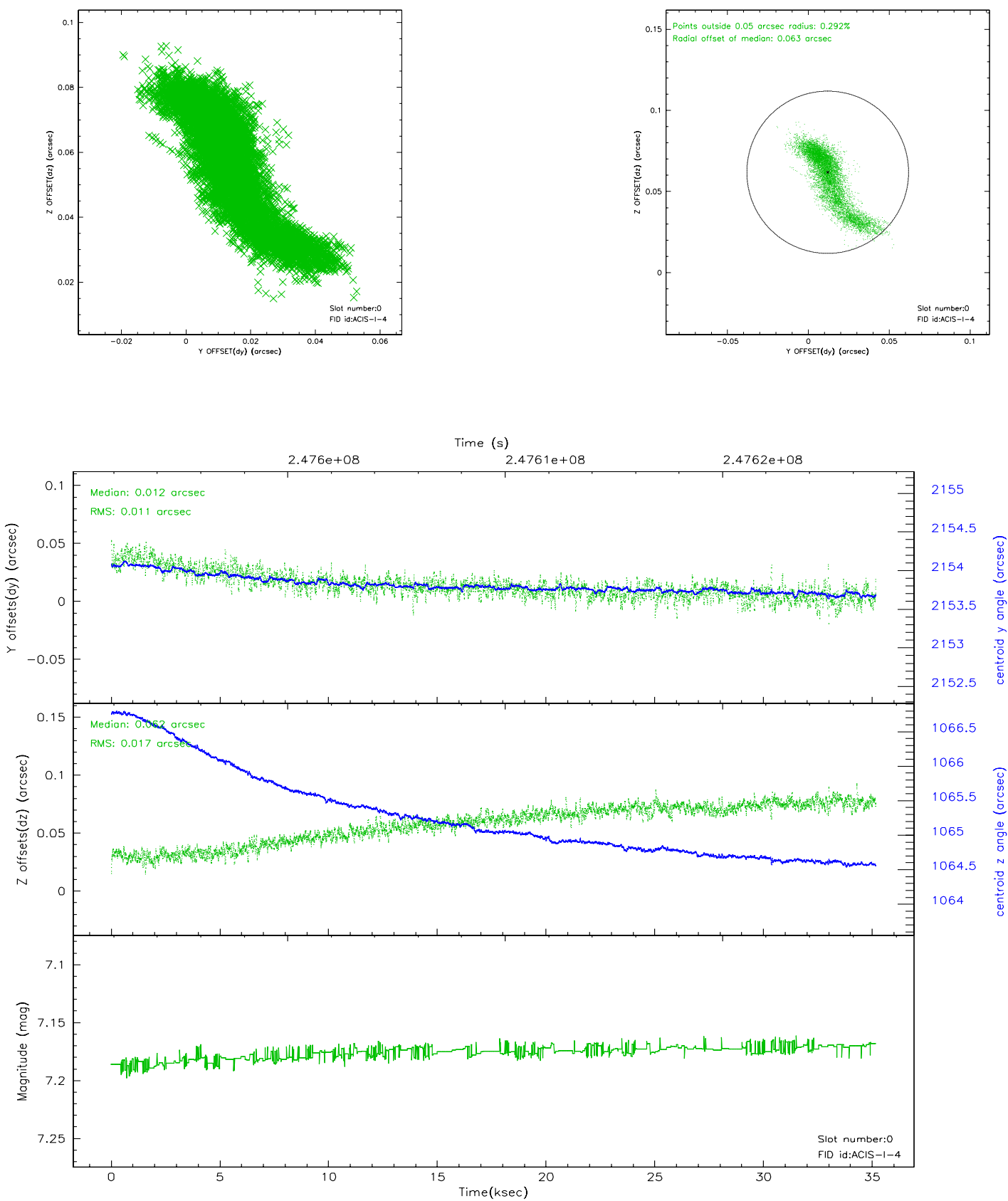


## 2.4.5 Slot 7

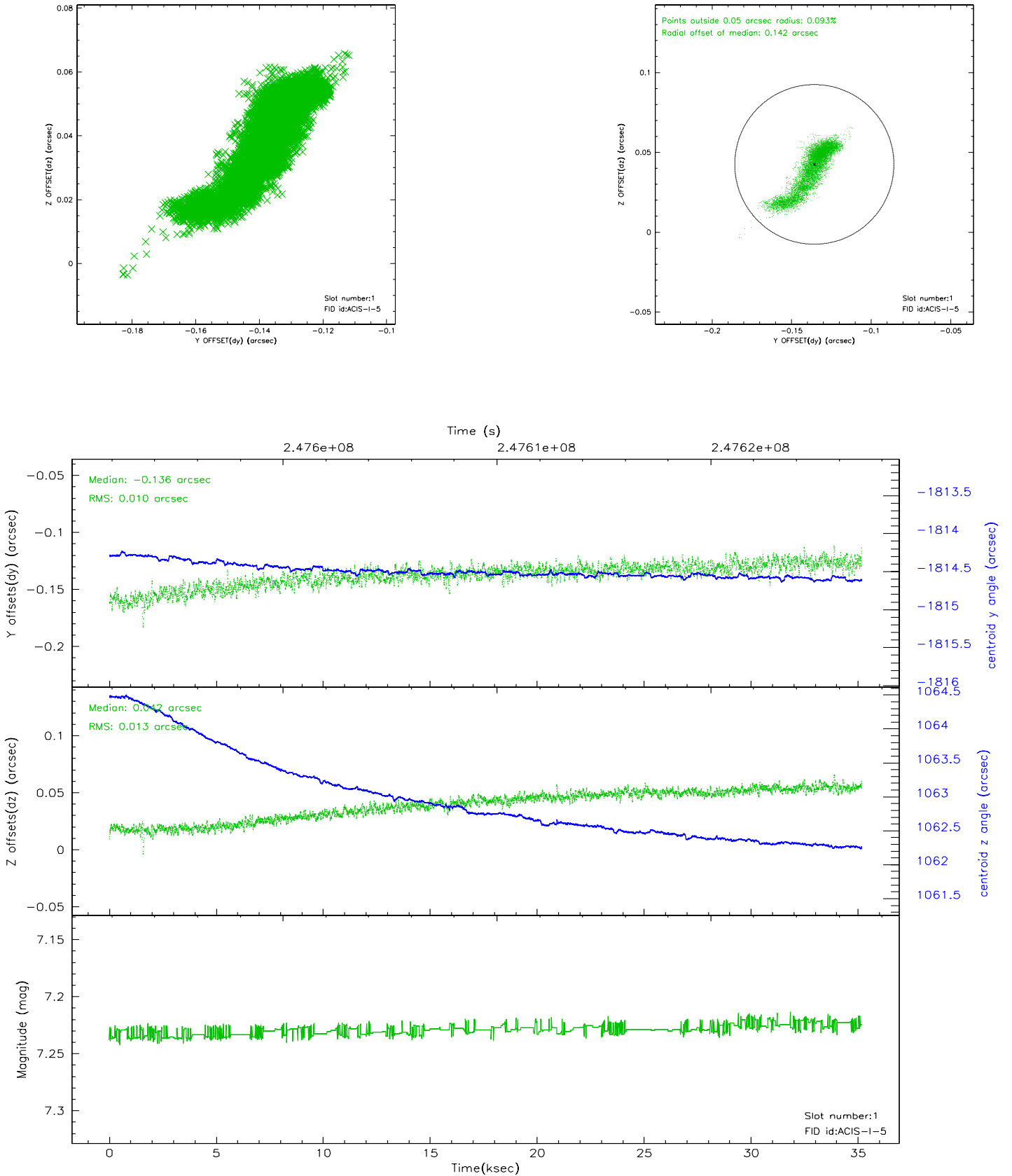


## 2.5 FID Slots

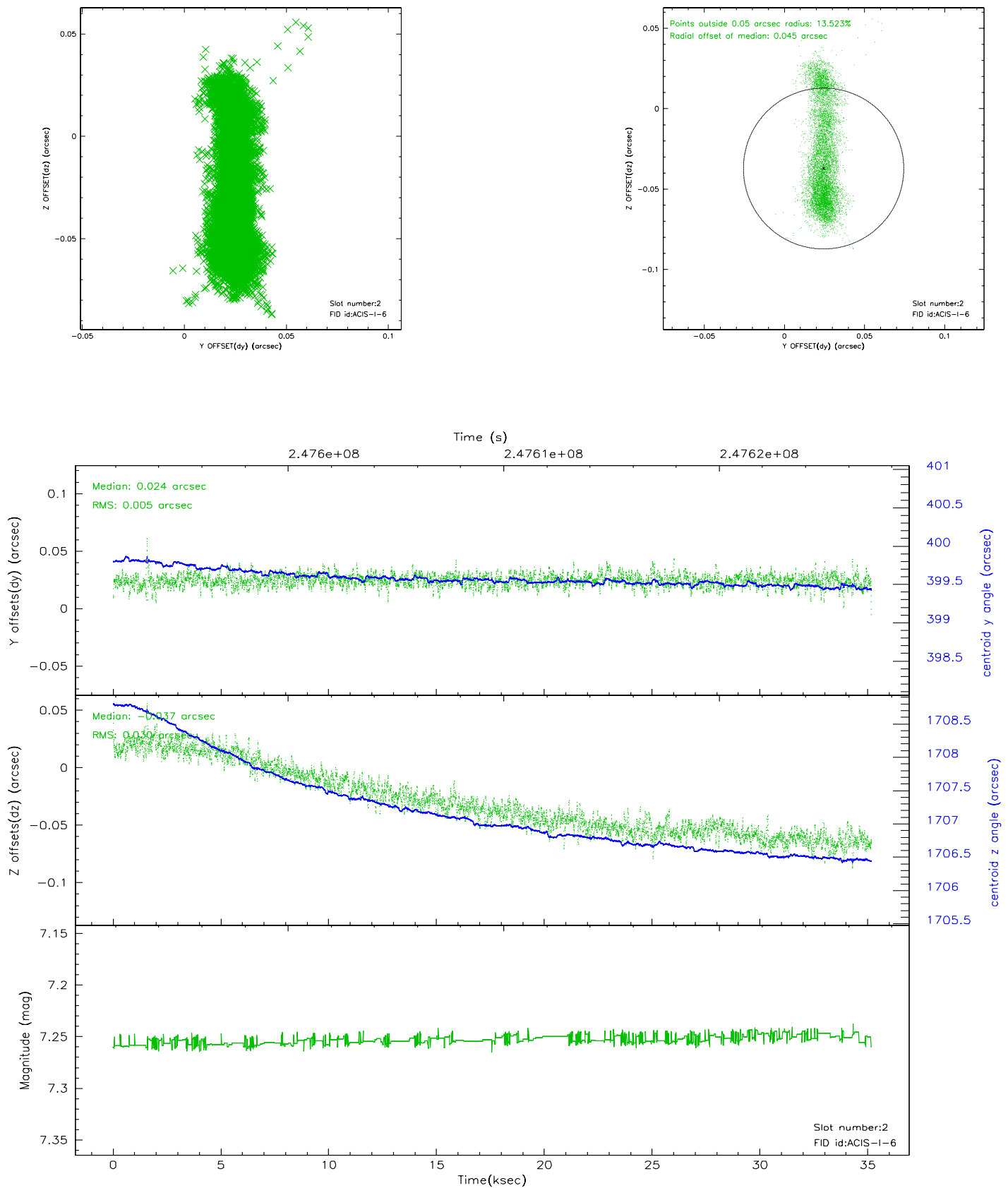
### 2.5.1 Slot 0



## 2.5.2 Slot 1

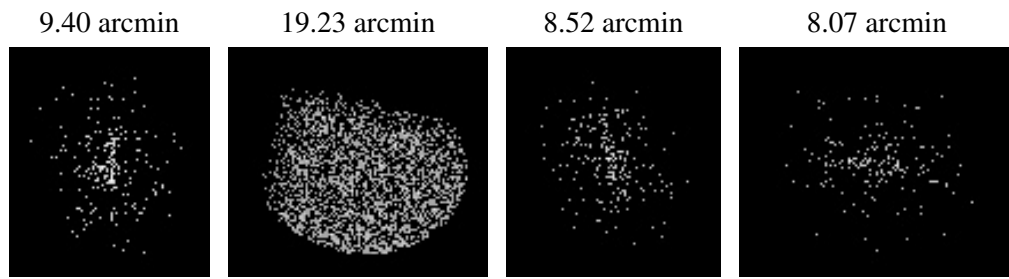


### 2.5.3 Slot 2





### 3 Point Sources



## A Summary

### A.1 Status

V&V Scientist	Doug Morgan
V&V Date (YYYY-MM-DD)	2006.04.04
V&V Edition	1
V&V Disposition and Status	OK
V&V Charge Time	35.15515

### A.2 Comments