

V&V Reference Report

L2 ASCDS Version : 8.4.3

Observation 55413 - L2 Version 2
Chandra X-Ray Center

L2 Processing Date : Feb 10 2012

Contents

| | | |
|----------|-------------------------------|----------|
| 1 | Front | 2 |
| 2 | OBI | 3 |
| 2.1 | OBI | 3 |
| 2.1.1 | Images | 3 |
| 2.1.2 | Bias | 3 |
| 2.1.3 | Parameters | 4 |
| 2.1.4 | Events | 4 |
| 2.2 | Compared Parameters | 5 |
| 2.3 | Star Slots | 6 |
| 2.4 | FID Slots | 6 |
| A | Summary | 7 |
| A.1 | Status | 7 |
| A.2 | Comments | 7 |

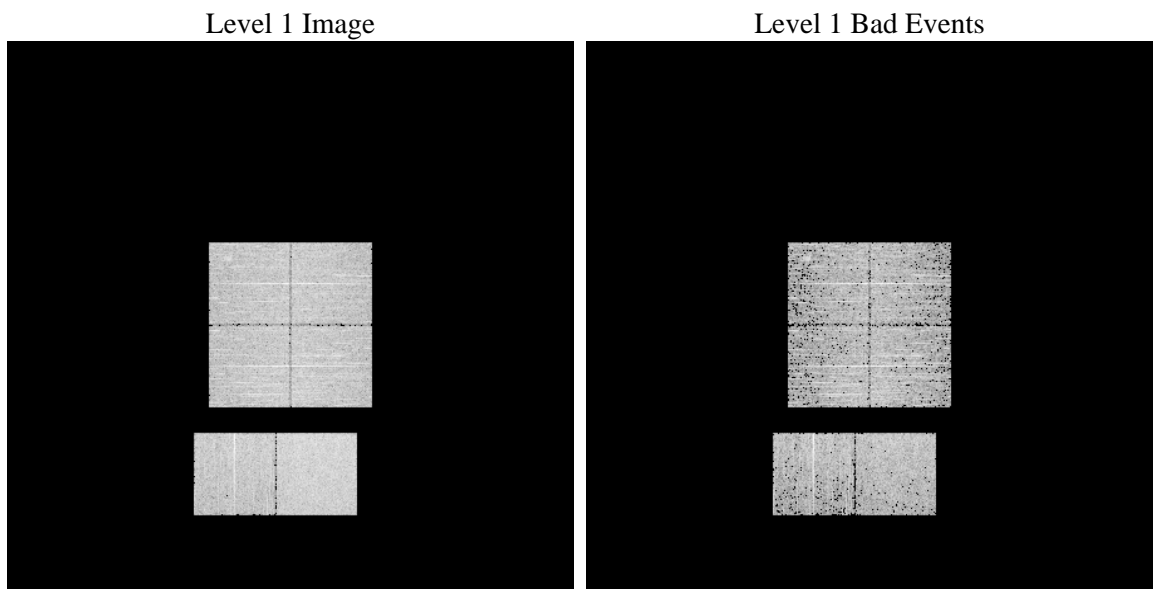
1 Front

| | | |
|----------|---|---|
| seq_num | | Sequence number |
| obs_id | 55413 | Observation id |
| title | ACIS-012367 diagnostics | Proposal title |
| observer | CHANDRA engineering request/realtime commanding | Principal investig |
| object | | Source name |
| dtcycle | 0 | |
| cycle | P | events from which exps? Prim/Second/Both |
| ra_targ | 0.0 | Observer's specified target RA [deg] |
| dec_targ | 0.0 | Observer's specified target Dec [deg] |
| ra_nom | 229.98447470551 | Nominal RA [deg] |
| dec_nom | 1.9757716848414 | Nominal Dec [deg] |
| roll_nom | 205.28981711354 | Nominal Roll [deg] |
| revision | 2 | Processing version of data |
| ontime | 3196.5789175034 | Sum of GTIs [s] |
| livetime | 3156.1019105012 | Livetime [s] |
| ontime0 | 3196.5378775001 | Sum of GTIs [s] |
| ontime1 | 3196.4968374968 | Sum of GTIs [s] |
| ontime2 | 3196.4557974935 | Sum of GTIs [s] |
| ontime3 | 3196.6199575067 | Sum of GTIs [s] |
| ontime6 | 3196.4147574902 | Sum of GTIs [s] |
| ontime7 | 3196.5789175034 | Sum of GTIs [s] |
| l2events | 122050 | Number of level 2 events |

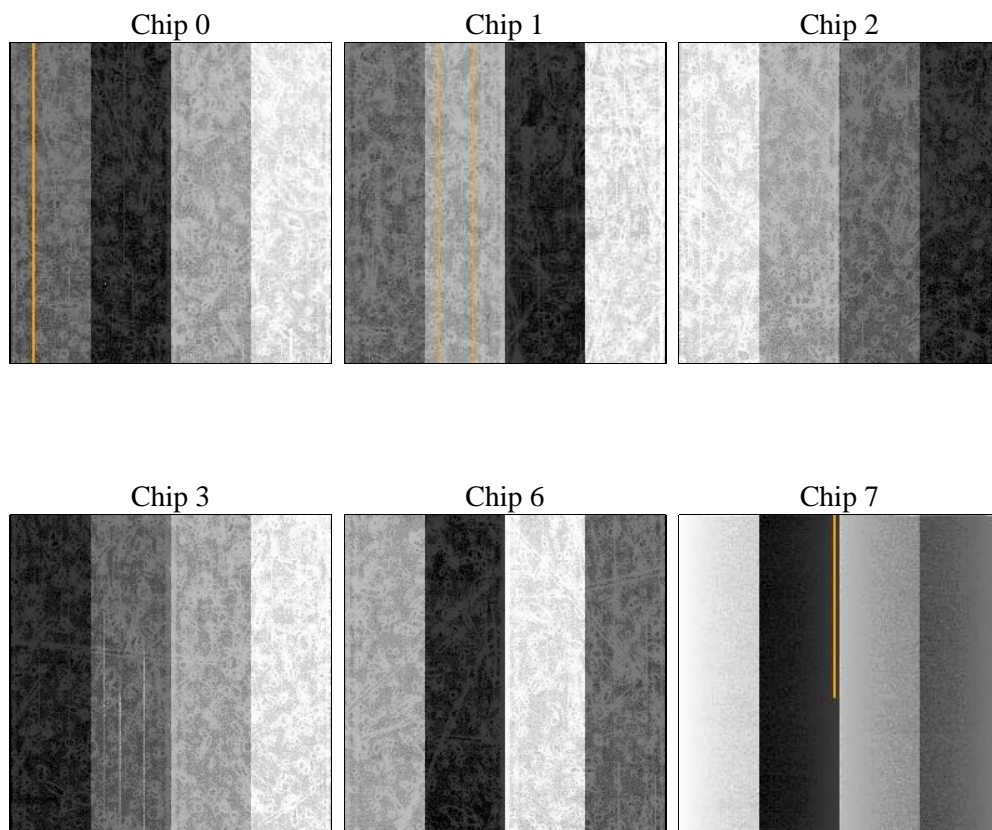
2 OBI

2.1 OBI

2.1.1 Images



2.1.2 Bias



2.1.3 Parameters

| | | | | | |
|----------|---------------------|--------------------------------|----------------|-----------------|---|
| obi_num | 0 | Obi number | sched_exp_time | 0.0 | [s] Scheduled observation exposure time |
| ascdsver | 8.4.3 | Processing system revision | ontime | 3196.5789175034 | Sum of GTIs [s] |
| caldsver | 4.4.7 | | ontime0 | 3196.5378775001 | Sum of GTIs [s] |
| date | 2012-02-11T03:23:26 | Date and time of file creation | ontime1 | 3196.4968374968 | Sum of GTIs [s] |
| revision | 2 | Processing version of data | ontime2 | 3196.4557974935 | Sum of GTIs [s] |
| | | | ontime3 | 3196.6199575067 | Sum of GTIs [s] |
| | | | ontime6 | 3196.4147574902 | Sum of GTIs [s] |
| | | | ontime7 | 3196.5789175034 | Sum of GTIs [s] |
| | | | l1events | 270077 | Number of level 1 events |

2.1.4 Events

| | ccd 0 | ccd 1 | ccd 2 | ccd 3 | ccd 6 | ccd 7 | | ccd 0 | ccd 1 | ccd 2 | ccd 3 | ccd 6 | ccd 7 |
|-----------------|-------|-------|-------|-------|-------|-------|----------------|-------|-------|-------|-------|-------|-------|
| level 1 events | 41169 | 41492 | 43062 | 44319 | 43601 | 56434 | grade 0 events | 10538 | 10293 | 10676 | 10661 | 10514 | 5451 |
| rejected events | 21701 | 21811 | 23646 | 25073 | 23663 | 24865 | | 25% | 24% | 24% | 24% | 24% | 9% |
| rejected % | 52% | 52% | 54% | 56% | 54% | 44% | grade 1 events | 58 | 68 | 66 | 58 | 54 | 47 |
| | | | | | | | | 0% | 0% | 0% | 0% | 0% | 0% |
| | | | | | | | grade 2 events | 3620 | 3873 | 3509 | 3446 | 3820 | 6991 |
| | | | | | | | | 8% | 9% | 8% | 7% | 8% | 12% |
| | | | | | | | grade 3 events | 1327 | 1388 | 1353 | 1383 | 1360 | 2937 |
| | | | | | | | | 3% | 3% | 3% | 3% | 3% | 5% |
| | | | | | | | grade 4 events | 1356 | 1385 | 1358 | 1344 | 1313 | 2905 |
| | | | | | | | | 3% | 3% | 3% | 3% | 3% | 5% |
| | | | | | | | grade 5 events | 1369 | 1420 | 1288 | 1546 | 1503 | 3827 |
| | | | | | | | | 3% | 3% | 2% | 3% | 3% | 6% |
| | | | | | | | grade 6 events | 3155 | 3281 | 3062 | 2981 | 3507 | 14145 |
| | | | | | | | | 7% | 7% | 7% | 6% | 8% | 25% |
| | | | | | | | grade 7 events | 19746 | 19784 | 21750 | 22900 | 21530 | 20131 |
| | | | | | | | | 47% | 47% | 50% | 51% | 49% | 35% |

2.2 Compared Parameters

| Parameter | Planned | Actual |
|-----------------------------------|----------------------|----------------------|
| Instrument | ACIS | ACIS |
| Detector | ACIS-012367 | ACIS-012367 |
| Grating | NONE | NONE |
| Data mode | FAINT | FAINT |
| Observation mode | SECONDARY | SECONDARY |
| [deg] Pointing RA | 0 | 229.9844747055103 |
| [deg] Pointing Dec | 0 | 1.975771684841389 |
| [deg] Pointing Roll | 0.0 | 205.2898171135362 |
| [mm] SIM focus pos | -1.4281808131 | -1.4281808131 |
| [mm] SIM defocus | 0.1051557500557434 | 0.1051557500557434 |
| [mm] SIM translation stage pos | 250.4660330802 | 250.4660330802 |
| [mm] SIM translation stage offset | -0.01005726120527584 | -0.01005726120527584 |
| [s] Observation start time (MET) | 422666147.104541 | 422666147.104541 |
| Observation start date | 2011-05-24T23:15:47 | 2011-05-24T23:15:47 |
| [s] Observation end time (MET) | 422670692.888377 | 422670692.888377 |
| Observation end date | 2011-05-25T00:31:33 | 2011-05-25T00:31:32 |
| Read mode | TIMED | TIMED |

| Parameter | Planned | Actual |
|---------------------------------------|-----------|----------|
| Obspar format version number | 7 | 7 |
| Obspar file type | PREDICTED | ACTUAL |
| Obspar update status | OVERRIDE | OVERRIDE |
| Number of optional ACIS chips dropped | 0 | 0 |
| On-chip summing requested | N | N |
| Subarray requested | NONE | NONE |
| Alternating exposures requested | N | N |
| [s] Primary exposure time | 3.2 | 3.2 |

2.3 Star Slots

2.4 FID Slots

A Summary

A.1 Status

| | |
|----------------------------|-----------------|
| V&V Scientist | Beth Sundheim |
| V&V Date (YYYY-MM-DD) | 2012.02.13 |
| V&V Edition | 1 |
| V&V Disposition and Status | OK |
| V&V Charge Time | 3.1965789175034 |

A.2 Comments