

# V&V Reference Report

## L2 ASCDS Version : 7.6.8.1

Observation 5523 - L2 Version 005  
Chandra X-Ray Center

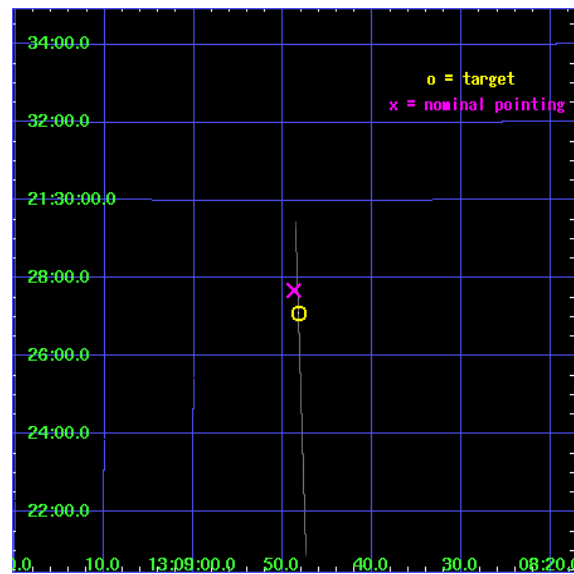
L2 Processing Date : Aug 18 2006

## Contents

<b>1</b>	<b>Front</b>	<b>2</b>
<b>2</b>	<b>OBI</b>	<b>3</b>
2.1	OBI . . . . .	3
2.1.1	Images . . . . .	3
2.1.2	Bias . . . . .	3
2.1.3	Parameters . . . . .	4
2.1.4	Events . . . . .	4
2.2	Compared Parameters . . . . .	5
2.3	Aspect . . . . .	6
2.4	Star Slots . . . . .	9
2.4.1	Slot 3 . . . . .	9
2.4.2	Slot 4 . . . . .	10
2.4.3	Slot 5 . . . . .	11
2.4.4	Slot 6 . . . . .	12
2.4.5	Slot 7 . . . . .	13
2.5	FID Slots . . . . .	14
2.5.1	Slot 0 . . . . .	14
2.5.2	Slot 1 . . . . .	15
2.5.3	Slot 2 . . . . .	16
<b>A</b>	<b>Summary</b>	<b>17</b>
A.1	Status . . . . .	17
A.2	Comments . . . . .	17

# 1 Front

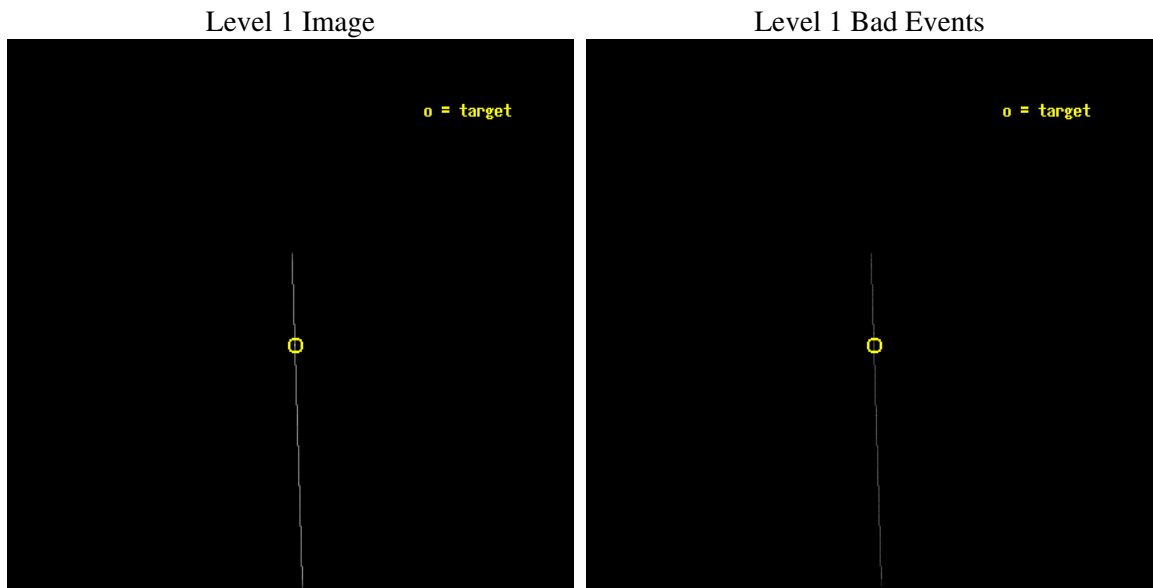
seq_num	500517
obs_id	5523
title	Timing the Enigmatic Nearby Neutron Star RX J1308.8+2127
observer	Dr David Kaplan
object	RX J1308.8+2127
ra_targ	197.20125
dec_targ	21.451889
ra_nom	197.20338273958
dec_nom	21.461405581261
roll_nom	88.155783565703
revision	5
ontime	5678.75
livetime	5656.5673828125
ontime7	5678.75
l2events	25271



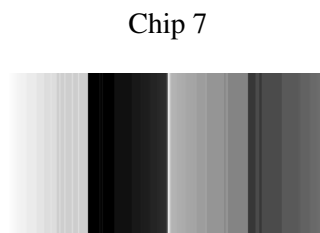
## 2 OBI

### 2.1 OBI

#### 2.1.1 Images



#### 2.1.2 Bias



### 2.1.3 Parameters

obi_num	0
ascdsver	7.6.8.1
caldbver	3.2.3
date	2006-08-14T22:46:49
revision	5

sched_exp_time	5500.000000
ontime	6185.5280985832
ontime7	6185.5280985832
l1events	32752

### 2.1.4 Events

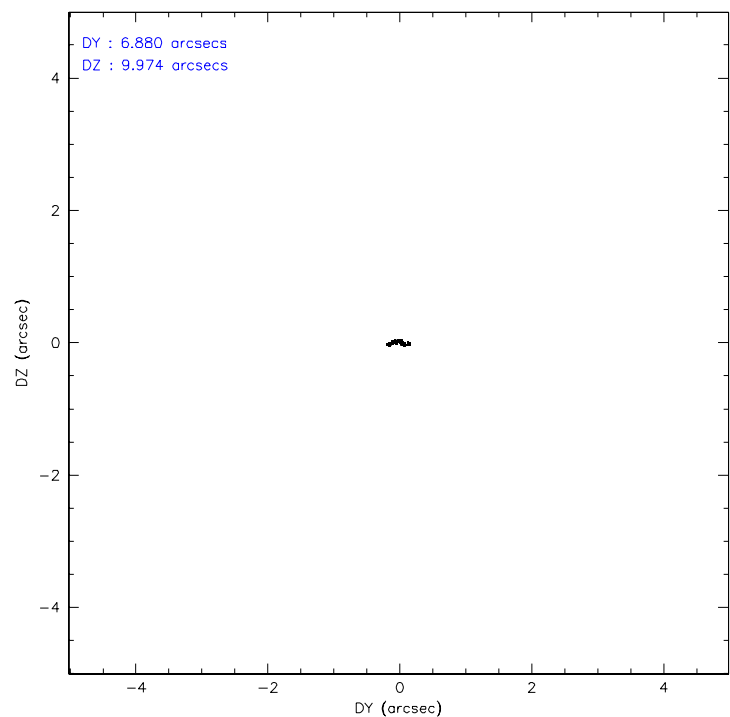
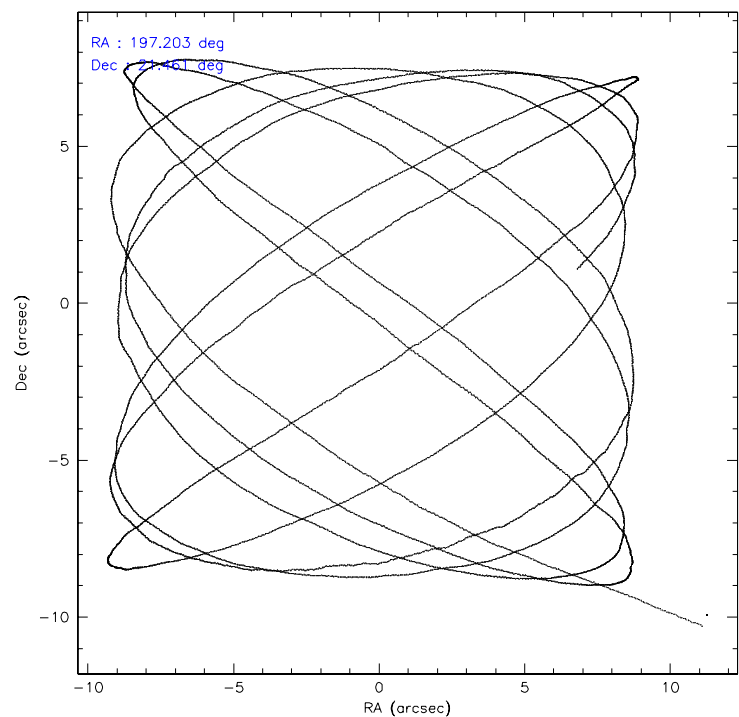
	<b>ccd 7</b>
level 1 events	32752
rejected events	6513
rejected %	19%

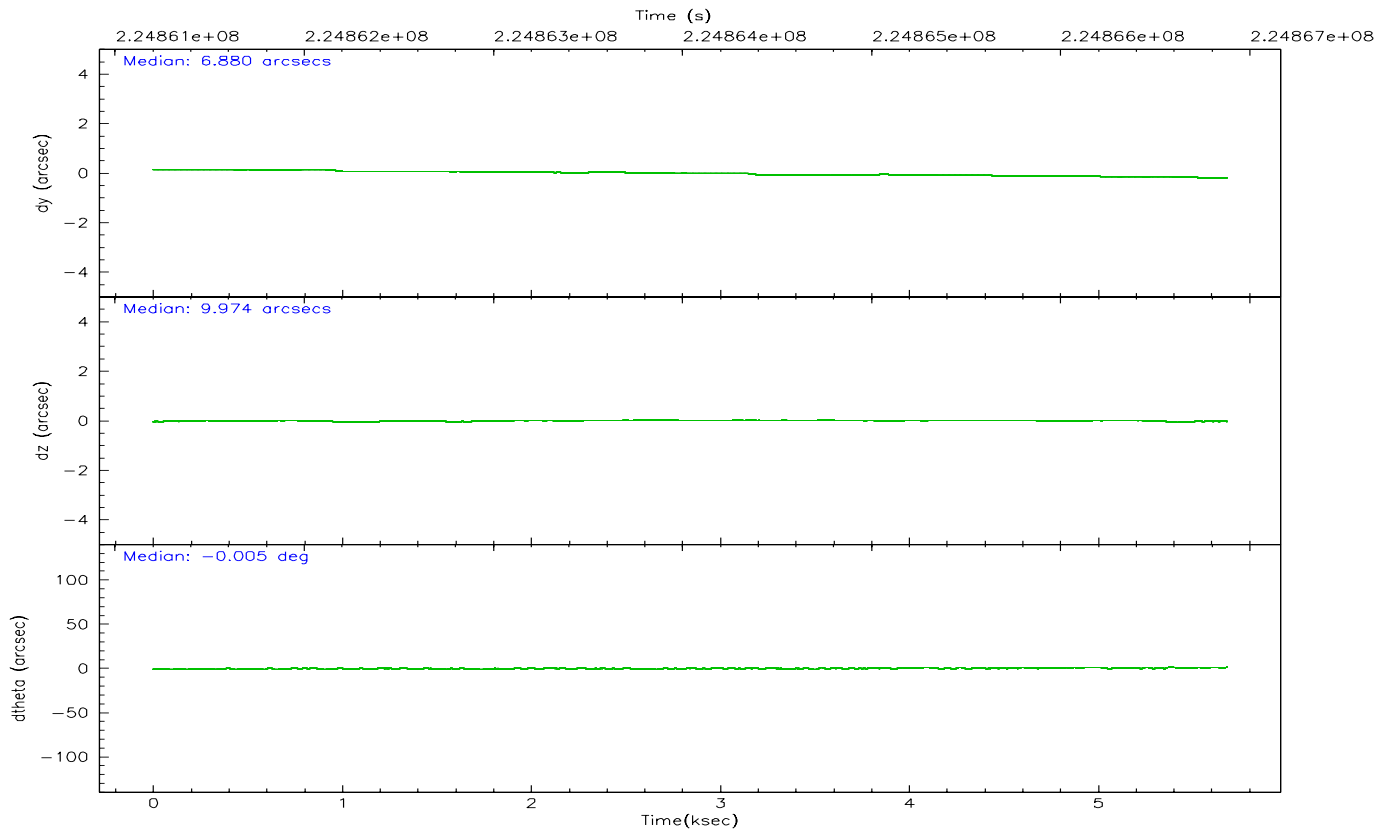
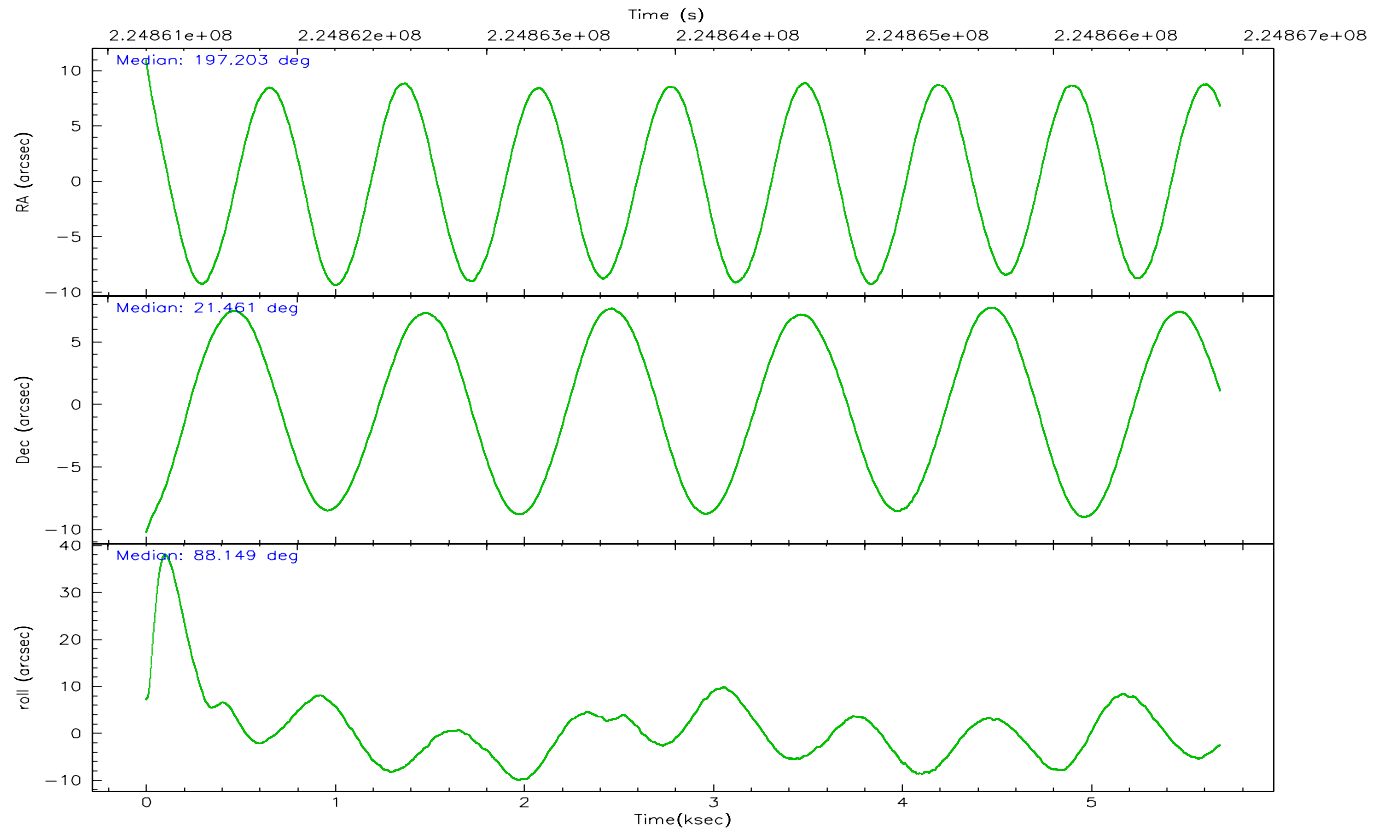
	<b>ccd 7</b>
grade 0 events	3066
	9%
grade 1 events	55
	0%
grade 2 events	7429
	22%
grade 3 events	1286
	3%
grade 4 events	1211
	3%
grade 5 events	4348
	13%
grade 6 events	15357
	46%
grade 7 events	0
	0%

## 2.2 Compared Parameters

Parameter	Planned	Actual	Parameter	Planned	Actual
Instrument	ACIS	ACIS	Obspar format version number	6	6
Detector	ACIS-7	ACIS-7	Obspar file type	PREDICTED	ACTUAL
Grating	NONE	NONE	Obspar update status	NONE	UPDATED
Data mode	CC33_FAINT	CC33_FAINT	On-chip summing requested	N	N
Observation mode	POINTING	POINTING	Subarray requested	NONE	NONE
Pointing RA	197.217552	197.2033827395767	Alternating exposures requested	N	N
Pointing Dec	21.437519	21.4614055812612	Primary exposure time	0.000000	0
Pointing Roll	87.994044	88.15578356570336			
SIM focus pos (mm)	-0.684267	-0.6828225247311905			
SIM defocus (mm)	0	0.001444936568705701			
SIM translation stage pos (mm)	-190.132523	-190.1400660498719			
SIM translation stage offset (mm)	0	0.00754346686406393			
Observation start time	224861381.184000	224860676.25222			
Observation start date	2005-02-15T13:28:37	2005-02-15T13:17:56			
Observation end time	224866881.184000	224868369.39007			
Observation end date	2005-02-15T15:00:17	2005-02-15T15:26:09			
Read mode	CONTINUOUS	CONTINUOUS			

### 2.3 Aspect





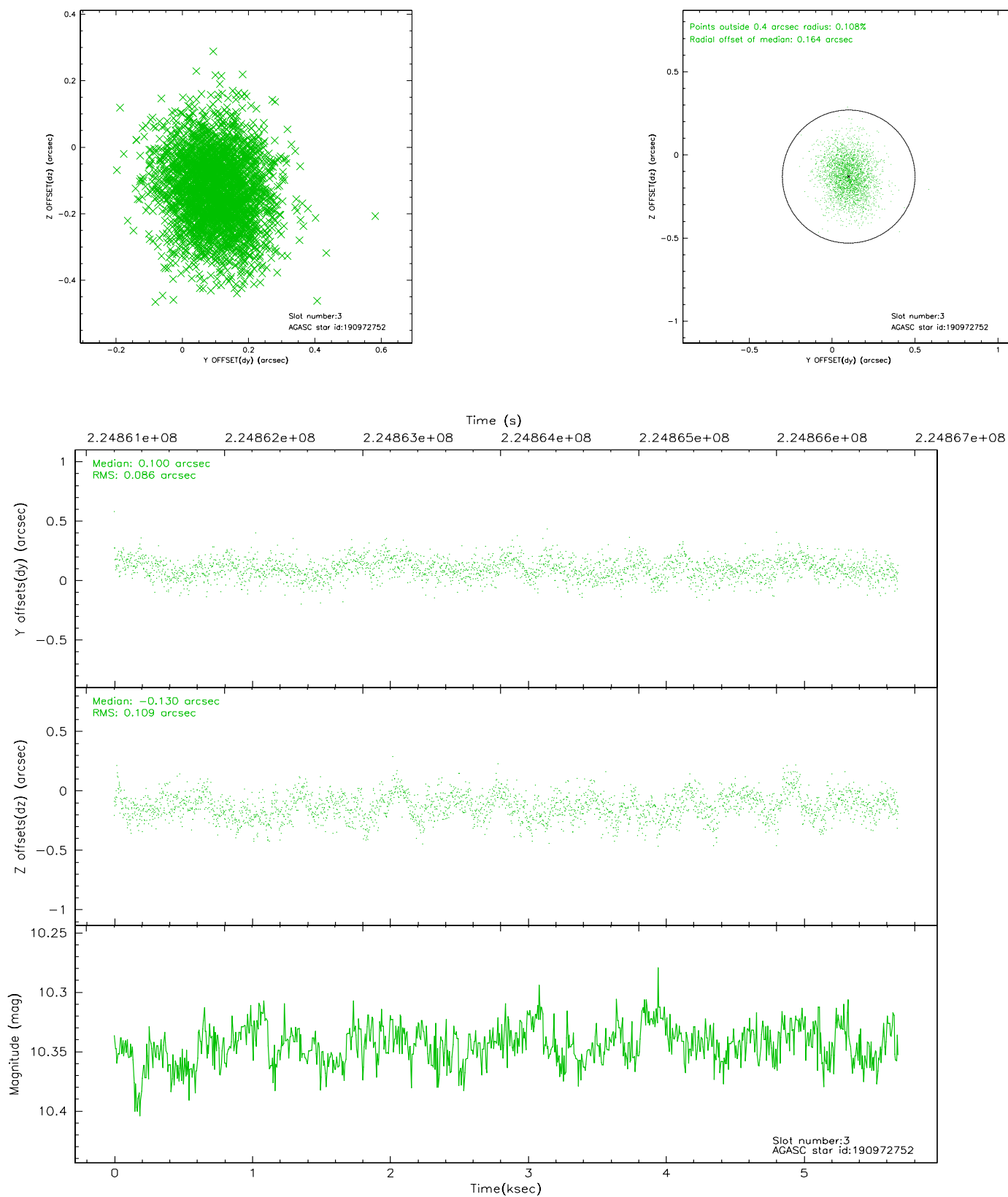
### Slot Statistics

slot	status	id	mag	n_pts	med_dy	med_dz	dr1	dr2	ra	dec	mean_y	mean_z
0	FID	ACIS-S-2	7.10	1387	-0.048	-0.004	0.007	0.011	0.000000	0.000000	-759.63	-1731.24
1	FID	ACIS-S-4	7.21	1387	0.061	0.024	0.005	0.009	0.000000	0.000000	2153.24	176.24
2	FID	ACIS-S-5	7.23	1386	-0.044	-0.012	0.007	0.011	0.000000	0.000000	-1811.15	171.00
3	GUIDE	190972752	10.34	2771	0.100	-0.130	0.146	0.244	197.567107	21.351082	-268.32	-1181.92
4	GUIDE	190973928	9.83	2772	-0.176	0.071	0.148	0.241	197.904188	21.564389	542.14	-2281.00
5	GUIDE	190974376	6.81	2774	-0.241	0.149	0.099	0.158	197.884749	21.918670	1814.09	-2166.38
6	GUIDE	190979840	10.34	2764	0.187	-0.044	0.362	0.518	197.337465	20.846267	-2112.05	-478.75
7	GUIDE	190971944	10.05	2767	0.133	-0.028	0.164	0.281	197.963793	22.064478	2348.68	-2408.83

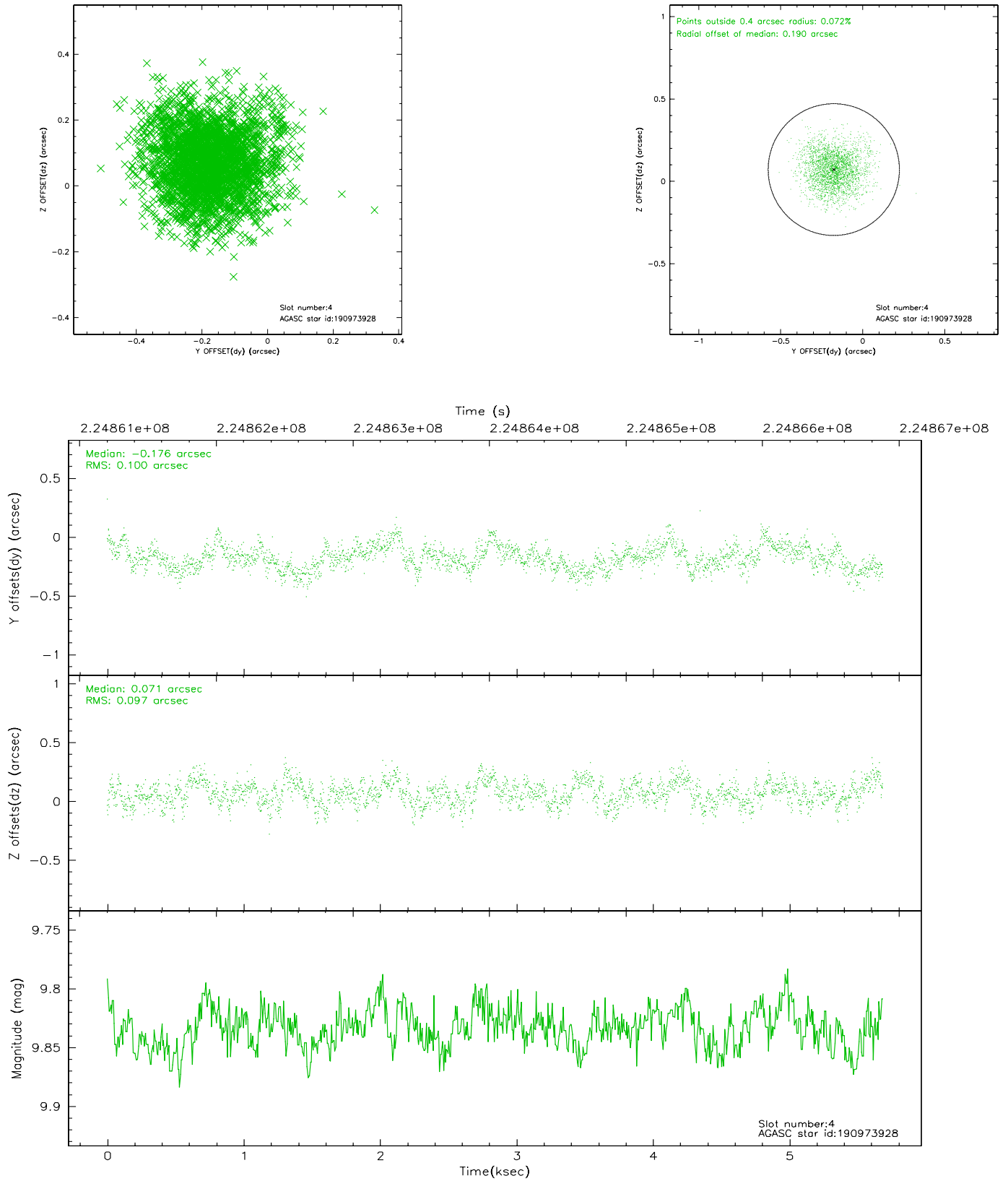


## 2.4 Star Slots

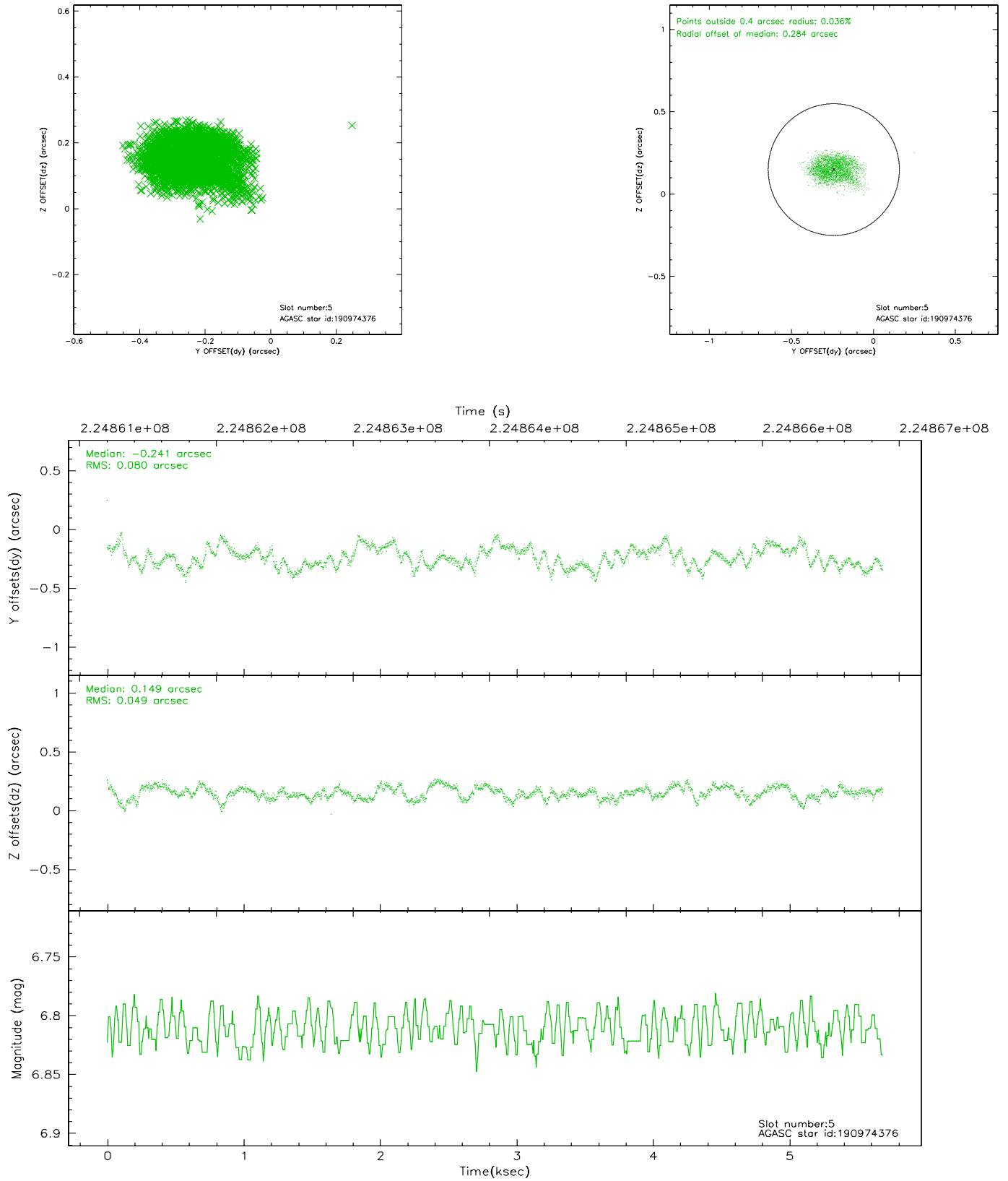
### 2.4.1 Slot 3



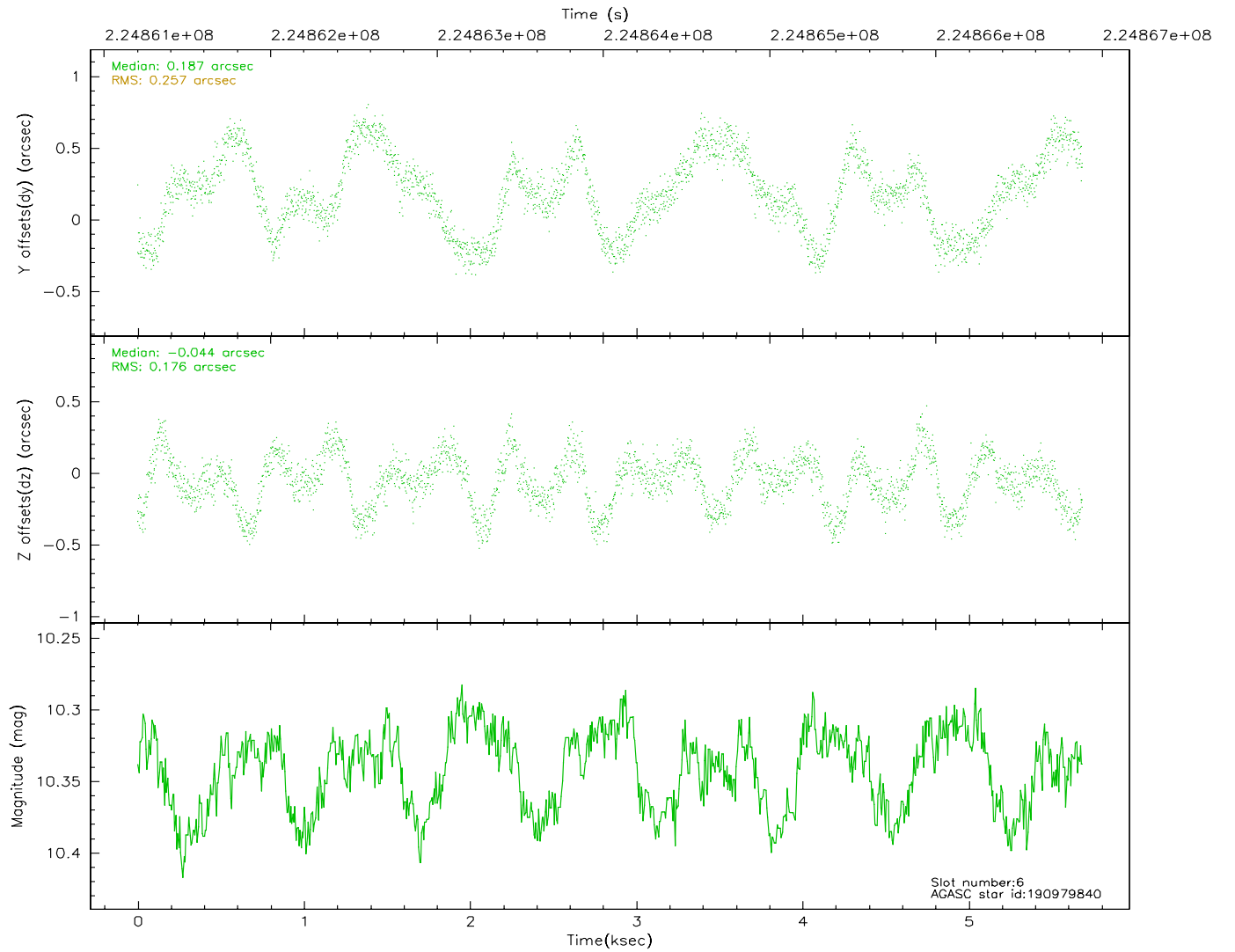
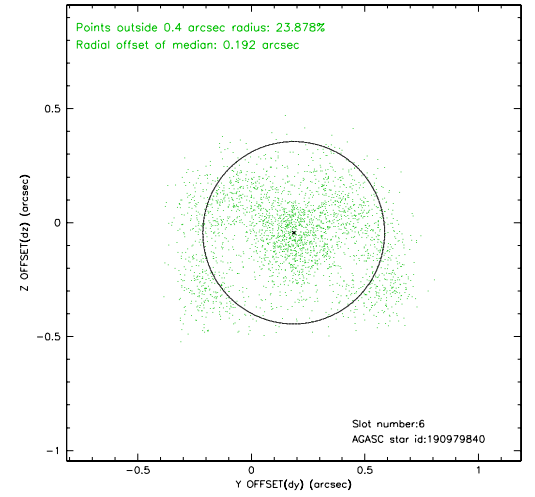
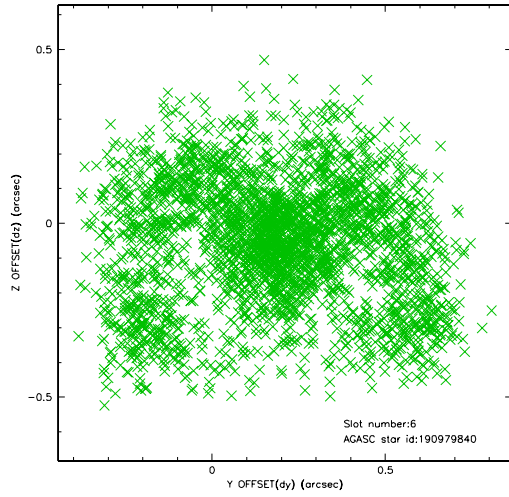
## 2.4.2 Slot 4



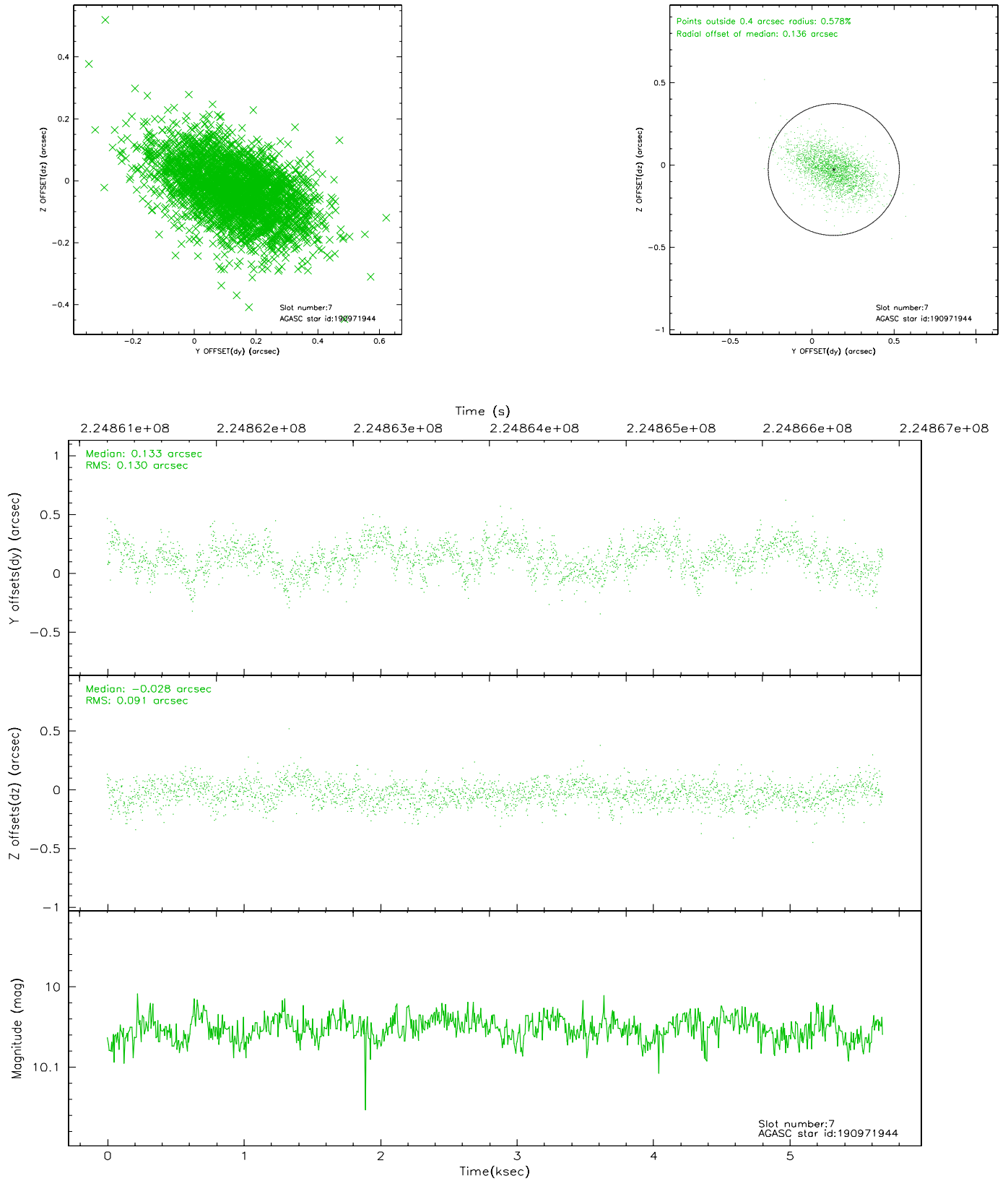
### 2.4.3 Slot 5



## 2.4.4 Slot 6

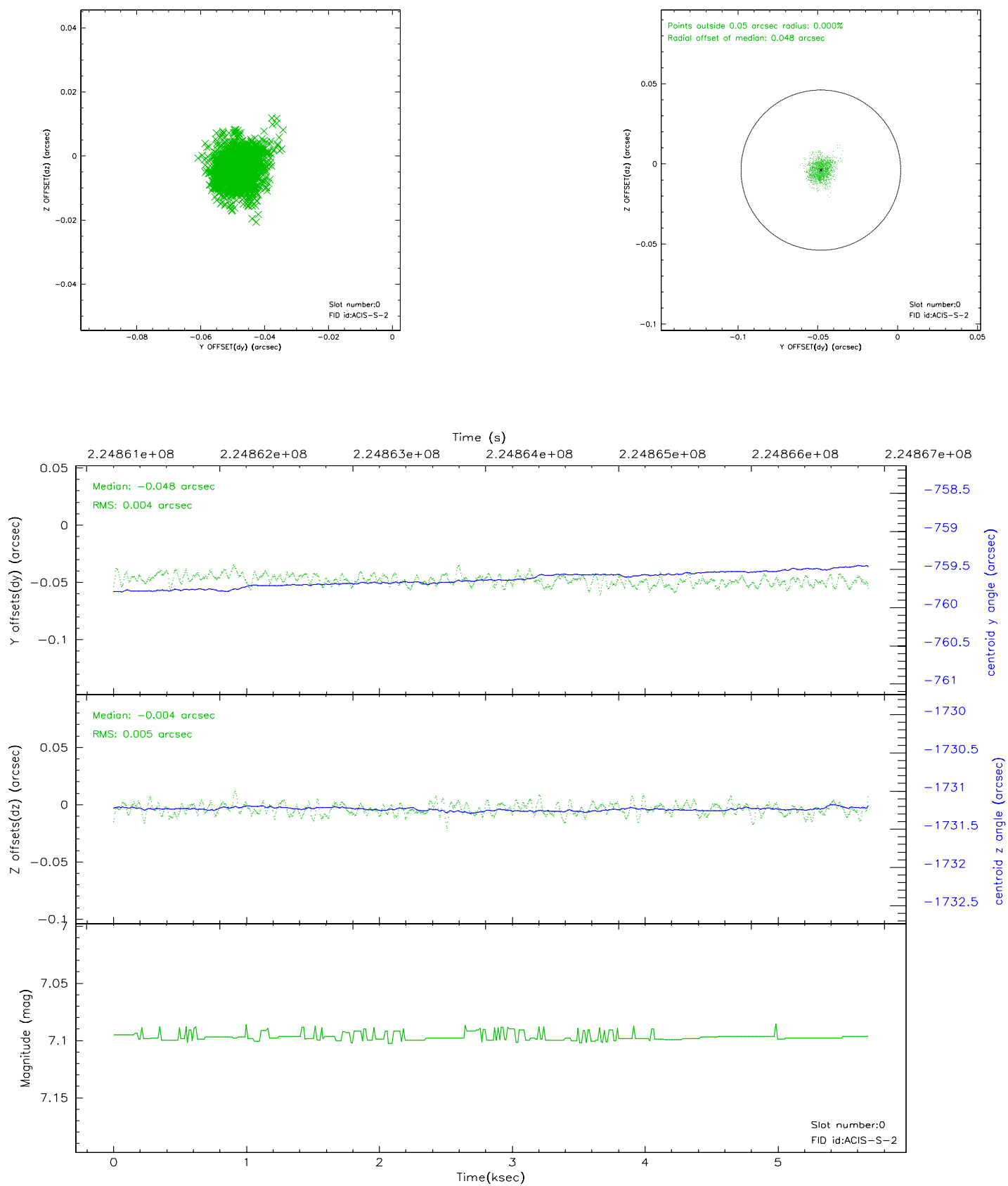


## 2.4.5 Slot 7

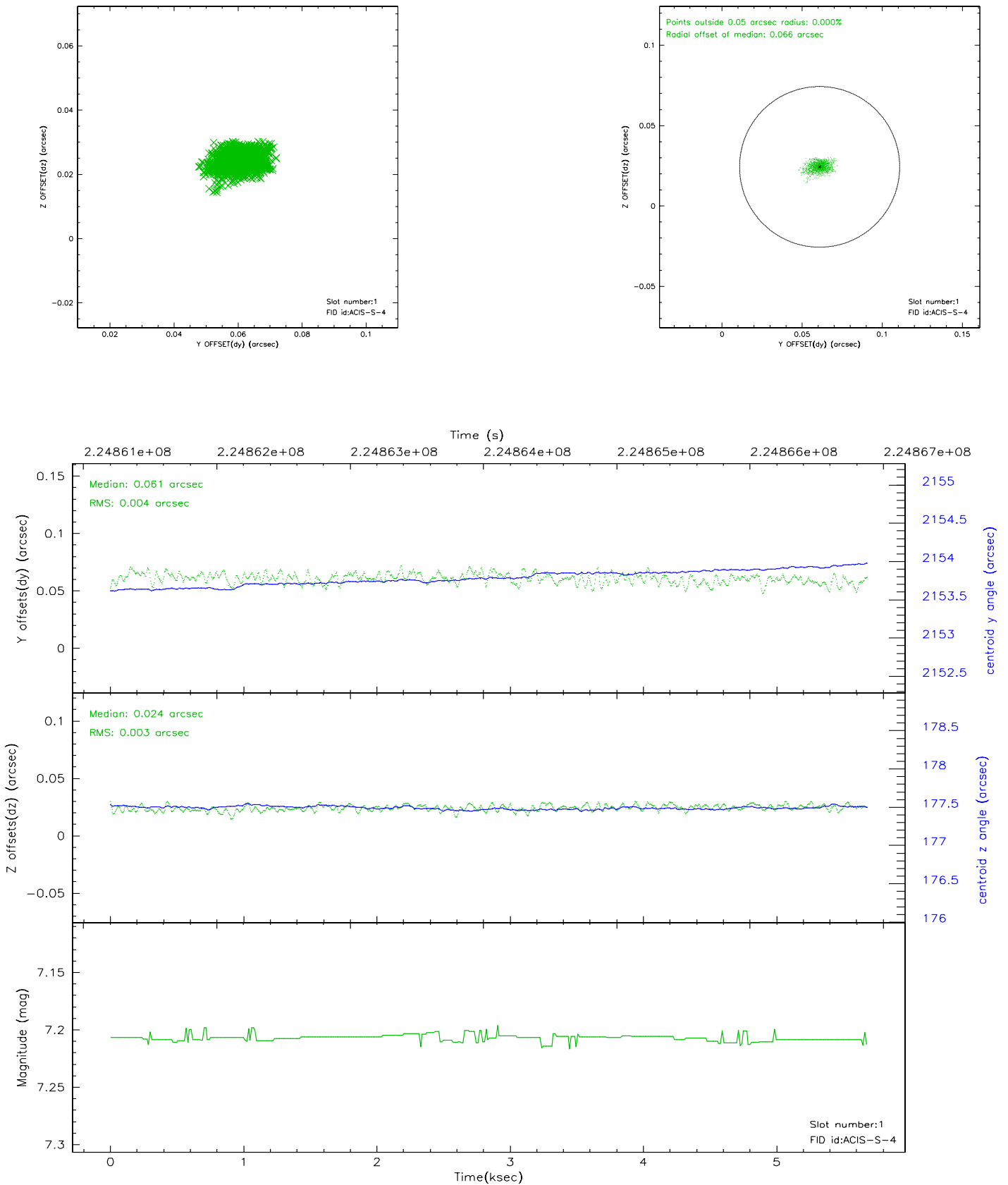


## 2.5 FID Slots

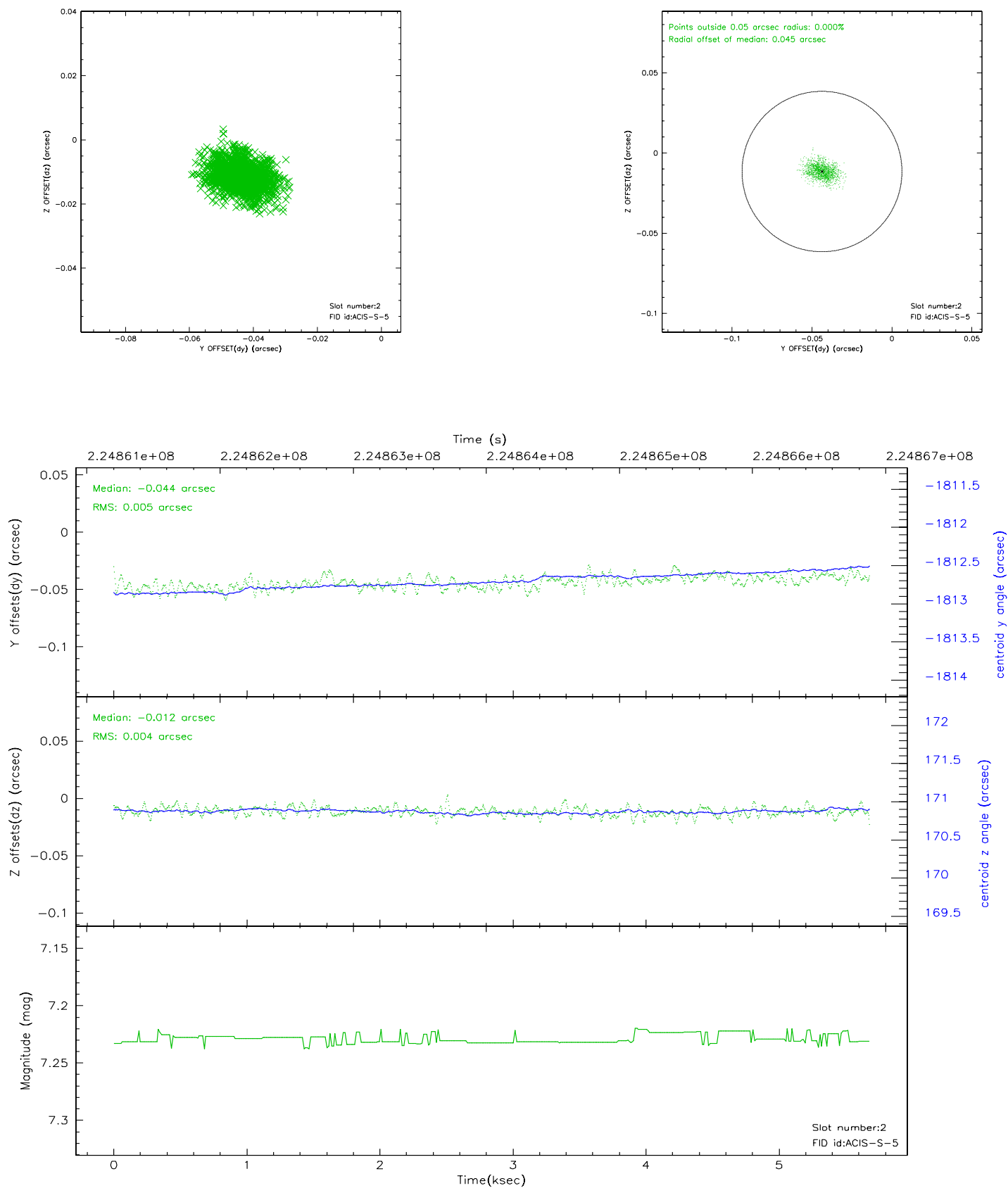
### 2.5.1 Slot 0



## 2.5.2 Slot 1



### 2.5.3 Slot 2





## A Summary

### A.1 Status

V&V Scientist	Beth Sundheim
V&V Date (YYYY-MM-DD)	2006.08.21
V&V Edition	1
V&V Disposition and Status	OK
V&V Charge Time	5.6825

### A.2 Comments