

V&V Reference Report

L2 ASCDS Version : 8.4.3

Observation 55013 - L2 Version 2
Chandra X-Ray Center

L2 Processing Date : Feb 27 2012

Contents

1	Front	2
2	OBI	3
2.1	OBI	3
2.1.1	Images	3
2.1.2	Bias	3
2.1.3	Parameters	4
2.1.4	Events	4
2.2	Compared Parameters	5
2.3	Star Slots	6
2.4	FID Slots	6
A	Summary	7
A.1	Status	7
A.2	Comments	7

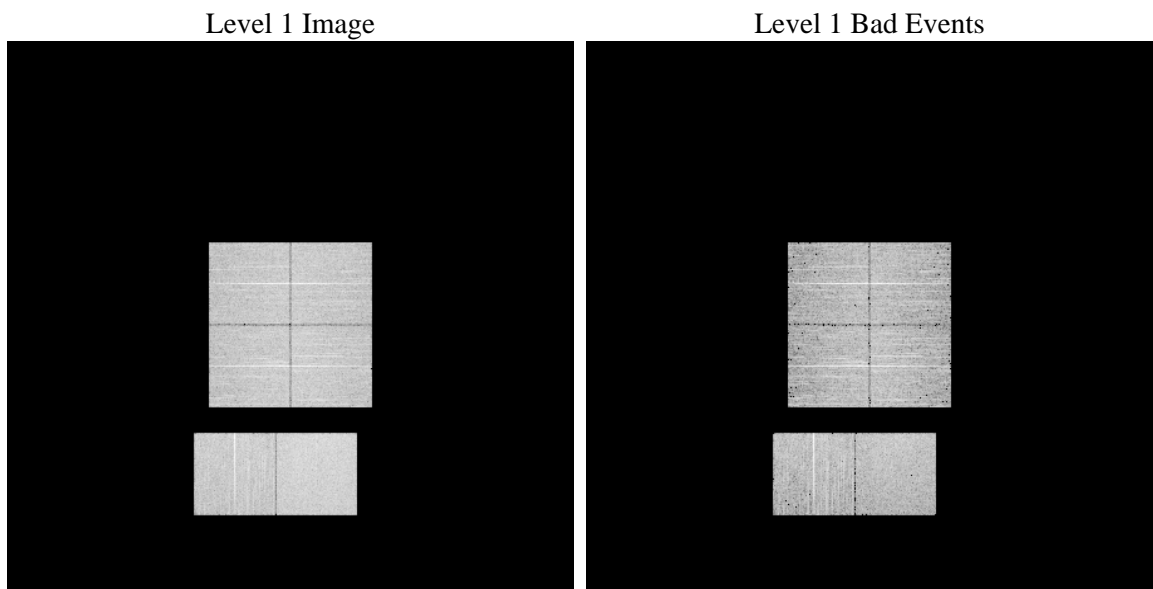
1 Front

seq_num	 	Sequence number
obs_id	55013	Observation id
title	ACIS-012367 diagnostics	Proposal title
observer	CHANDRA engineering request/realtime commanding	Principal investig
object	 	Source name
dtcycle	0	
cycle	P	events from which exps? Prim/Second/Both
ra_targ	0.0	Observer's specified target RA [deg]
dec_targ	0.0	Observer's specified target Dec [deg]
ra_nom	39.008817666721	Nominal RA [deg]
dec_nom	35.972187895257	Nominal Dec [deg]
roll_nom	251.52638613744	Nominal Roll [deg]
revision	2	Processing version of data
ontime	6723.1999750137	Sum of GTIs [s]
livetime	6638.0667687051	Livetime [s]
ontime0	6723.1999750137	Sum of GTIs [s]
ontime1	6723.1999750137	Sum of GTIs [s]
ontime2	6723.1999750137	Sum of GTIs [s]
ontime3	6723.1999750137	Sum of GTIs [s]
ontime6	6723.1999750137	Sum of GTIs [s]
ontime7	6723.1999750137	Sum of GTIs [s]
l2events	222296	Number of level 2 events

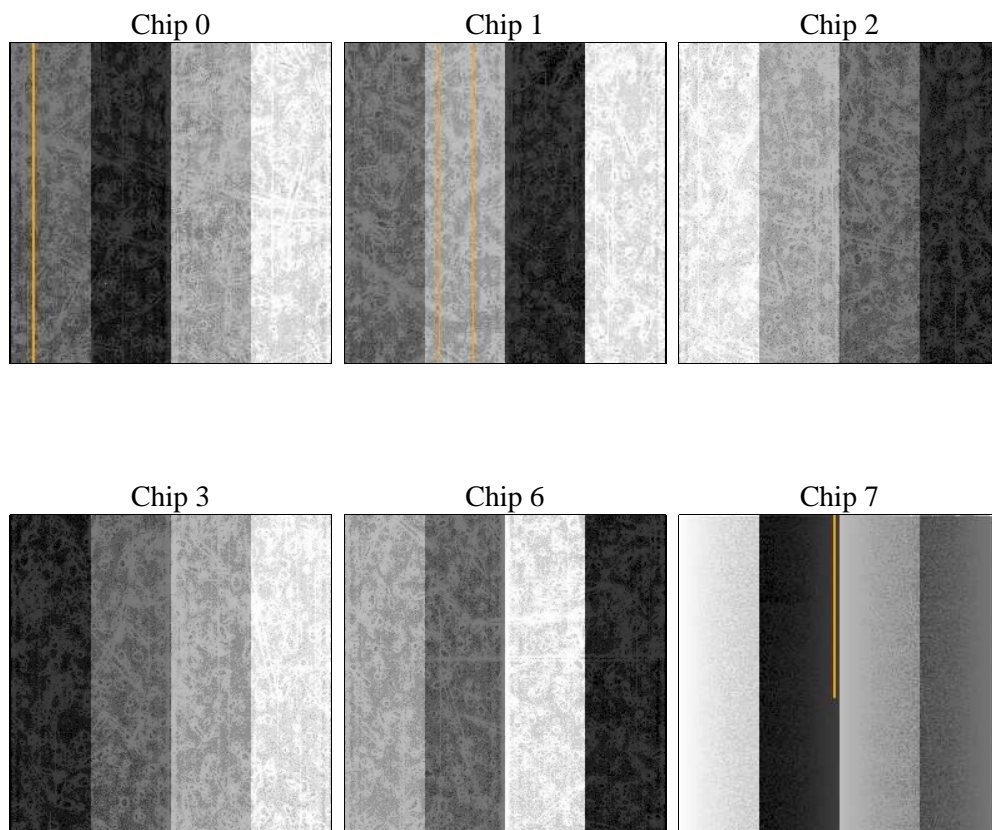
2 OBI

2.1 OBI

2.1.1 Images



2.1.2 Bias



2.1.3 Parameters

obi_num	2	Obi number	sched_exp_time	0.0	[s] Scheduled observation exposure time
ascdsver	8.4.3	Processing system revision	ontime	6723.1999750137	Sum of GTIs [s]
caldbver	4.4.8	 	ontime0	6723.1999750137	Sum of GTIs [s]
date	2012-02-28T01:57:58	Date and time of file creation	ontime1	6723.1999750137	Sum of GTIs [s]
revision	2	Processing version of data	ontime2	6723.1999750137	Sum of GTIs [s]
			ontime3	6723.1999750137	Sum of GTIs [s]
			ontime6	6723.1999750137	Sum of GTIs [s]
			ontime7	6723.1999750137	Sum of GTIs [s]
			l1events	513488	Number of level 1 events

2.1.4 Events

	ccd 0	ccd 1	ccd 2	ccd 3	ccd 6	ccd 7		ccd 0	ccd 1	ccd 2	ccd 3	ccd 6	ccd 7
level 1 events	77359	78931	80311	83398	86589	106900	grade 0 events	17778	16605	18796	18770	16400	8642
rejected events	42232	43639	45108	48040	50404	48829		22%	21%	23%	22%	18%	8%
rejected %	54%	55%	56%	57%	58%	45%	grade 1 events	95	77	104	94	74	81
								0%	0%	0%	0%	0%	0%
							grade 2 events	7047	8421	6106	6241	8961	13041
								9%	10%	7%	7%	10%	12%
							grade 3 events	2313	2170	2422	2345	1991	4744
								2%	2%	3%	2%	2%	4%
							grade 4 events	2332	2110	2427	2502	2083	4667
								3%	2%	3%	3%	2%	4%
							grade 5 events	2539	2516	2415	2816	2542	6717
								3%	3%	3%	3%	2%	6%
							grade 6 events	5657	5986	5452	5500	6750	26977
								7%	7%	6%	6%	7%	25%
							grade 7 events	39598	41046	42589	45130	47788	42031
								51%	52%	53%	54%	55%	39%

2.2 Compared Parameters

Parameter	Planned	Actual	Parameter	Planned	Actual
Instrument	ACIS	ACIS	Obspar format version number	7	7
Detector	ACIS-012367	ACIS-012367	Obspar file type	PREDICTED	ACTUAL
Grating	NONE	NONE	Obspar update status	NONE	UPDATED
Data mode	FAINT	FAINT	Number of optional ACIS chips dropped	0	0
Observation mode	SECONDARY	SECONDARY	On-chip summing requested	N	N
[deg] Pointing RA	0	39.00881766672091	Subarray requested	NONE	NONE
[deg] Pointing Dec	0	35.97218789525736	Alternating exposures requested	N	N
[deg] Pointing Roll	0.0	251.5263861374439	[s] Primary exposure time	3.2	3.2
[mm] SIM focus pos	-1.429586	-1.428180813131781			
[mm] SIM defocus	0.1037507710433287	0.1051558262725154			
[mm] SIM translation stage pos	250.455976	250.466033080201			
[mm] SIM translation stage offset	0	-0.01005468664627074			
[s] Observation start time (MET)	439370594.944542	439370593.91953			
Observation start date	2011-12-04T07:23:15	2011-12-04T07:23:13			
[s] Observation end time (MET)	439382093.395149	439382092.37014			
Observation end date	2011-12-04T10:34:53	2011-12-04T10:34:52			
Read mode	TIMED	TIMED			

2.3 Star Slots

2.4 FID Slots

A Summary

A.1 Status

V&V Scientist	Jen Lauer
V&V Date (YYYY-MM-DD)	2012.02.29
V&V Edition	1
V&V Disposition and Status	OK
V&V Charge Time	6.7231999750137

A.2 Comments