

V&V Reference Report

L2 ASCDS Version : 7.6.7

Observation 5443 - L2 Version 002
Chandra X-Ray Center

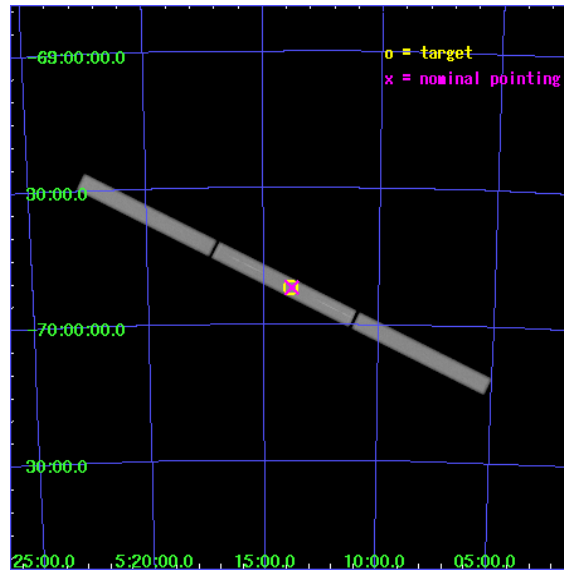
L2 Processing Date: Mar 3 2006

Contents

1	Front	2
2	OBI	3
2.1	OBI	3
2.1.1	Images	3
2.1.2	Parameters	4
2.1.3	Events	4
2.2	Compared Parameters	5
2.3	Aspect	6
2.4	Star Slots	9
2.4.1	Slot 3	9
2.4.2	Slot 4	10
2.4.3	Slot 5	11
2.4.4	Slot 6	12
2.4.5	Slot 7	13
2.5	FID Slots	14
2.5.1	Slot 0	14
2.5.2	Slot 1	15
2.5.3	Slot 2	16
3	Gratings	17
3.1	LETG Arm	17
A	Summary	19
A.1	Status	19
A.2	Comments	19

1 Front

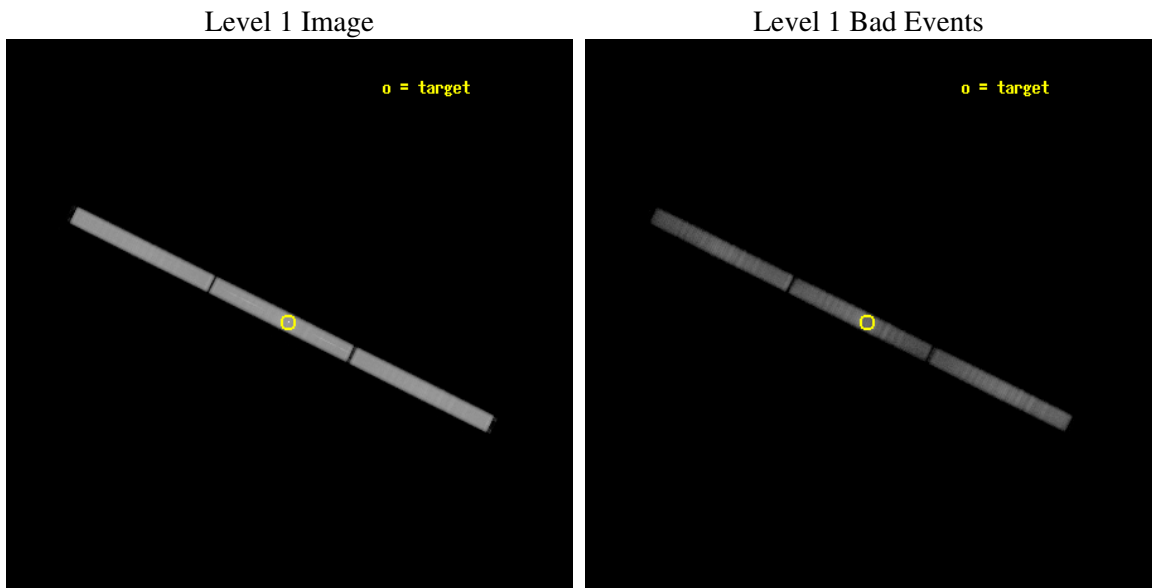
seq_num	300159
obs_id	5443
title	Testing Accretion Scenarios at the Eddington Limit
observer	Dr. Vadim Burwitz
object	RXJ0513.9-6951
ra_targ	78.461667
dec_targ	-69.863056
ra_nom	78.449546179426
dec_nom	-69.8650526045
roll_nom	206.30213269719
revision	2
ontime	22651.219781101
livetime	22499.591911571
l2events	1301862



2 OBI

2.1 OBI

2.1.1 Images



2.1.2 Parameters

obi_num	2
ascdsver	7.6.7
caldsver	3.2.1
date	2006-03-03T10:57:26
revision	2

sched_exp_time	22500.000000
ontime	22651.476031125
l1events	1950970

2.1.3 Events

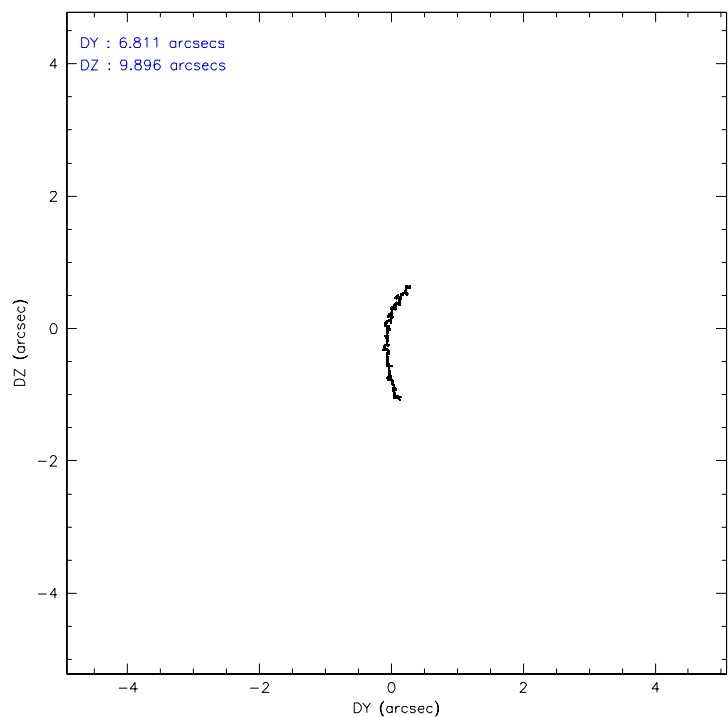
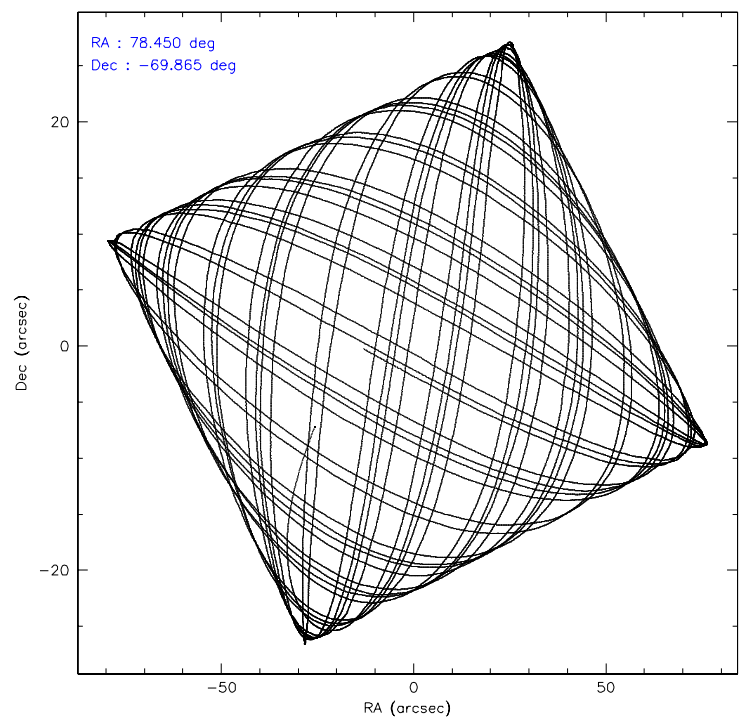
Level 1 Events

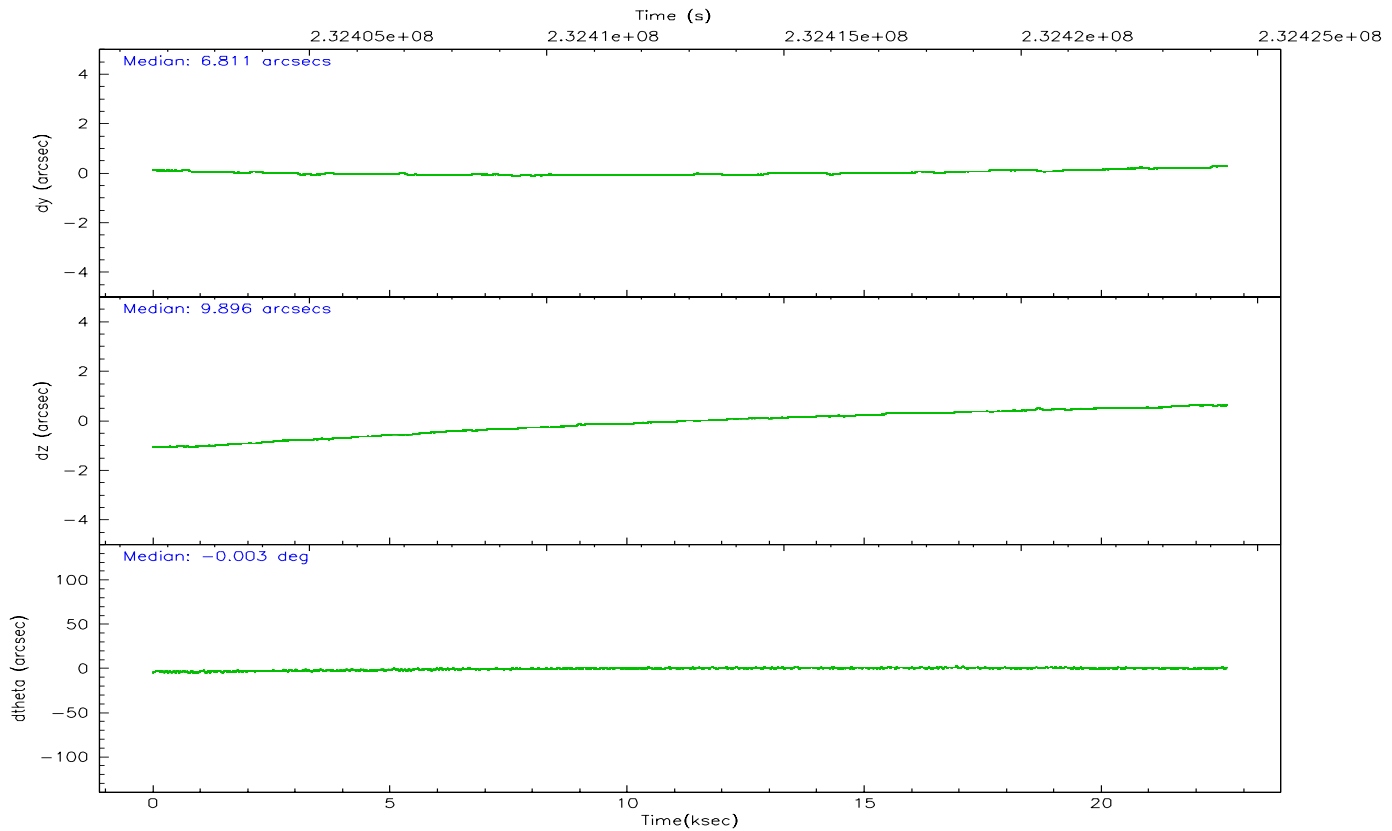
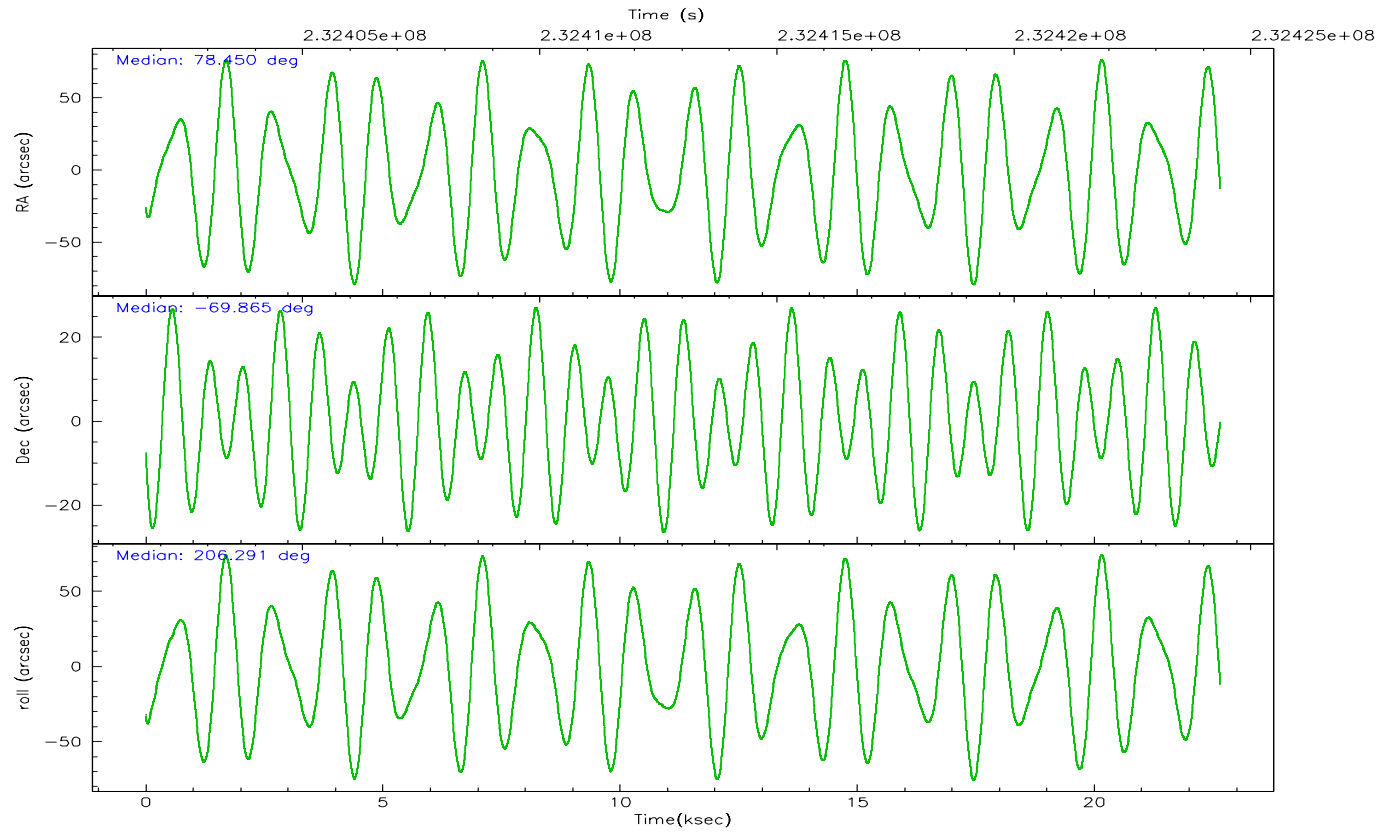
	segment 1	segment 2	segment 3
level 1 events	649255	652988	648727
rejected events	142908	155534	171418
rejected %	22%	23%	26%

2.2 Compared Parameters

Parameter	Planned	Actual	Parameter	Planned	Actual
Instrument	HRC	HRC	Obspar format version number	6	6
Detector	HRC-S	HRC-S	Obspar file type	PREDICTED	ACTUAL
Grating	LETG	LETG	Obspar update status	NONE	UPDATED
Data mode	OBSERVING	OBSERVING			
Observation mode	POINTING	POINTING			
Pointing RA	78.491881	78.44954617942606			
Pointing Dec	-69.840441	-69.8650526044996			
Pointing Roll	206.274548	206.3021326971945			
SIM focus pos (mm)	-1.429586	-1.428180813131781			
SIM defocus (mm)	0.1037507710433287	0.1051558262725154			
SIM translation stage pos (mm)	250.455976	250.4635187648994			
SIM translation stage offset (mm)	0	-0.007540371344731511			
Observation start time	232401852.184000	232400844.63205			
Observation start date	2005-05-13T20:03:08	2005-05-13T19:47:24			
Observation end time	232424352.184000	232425122.27065			
Observation end date	2005-05-14T02:18:08	2005-05-14T02:32:02			

2.3 Aspect



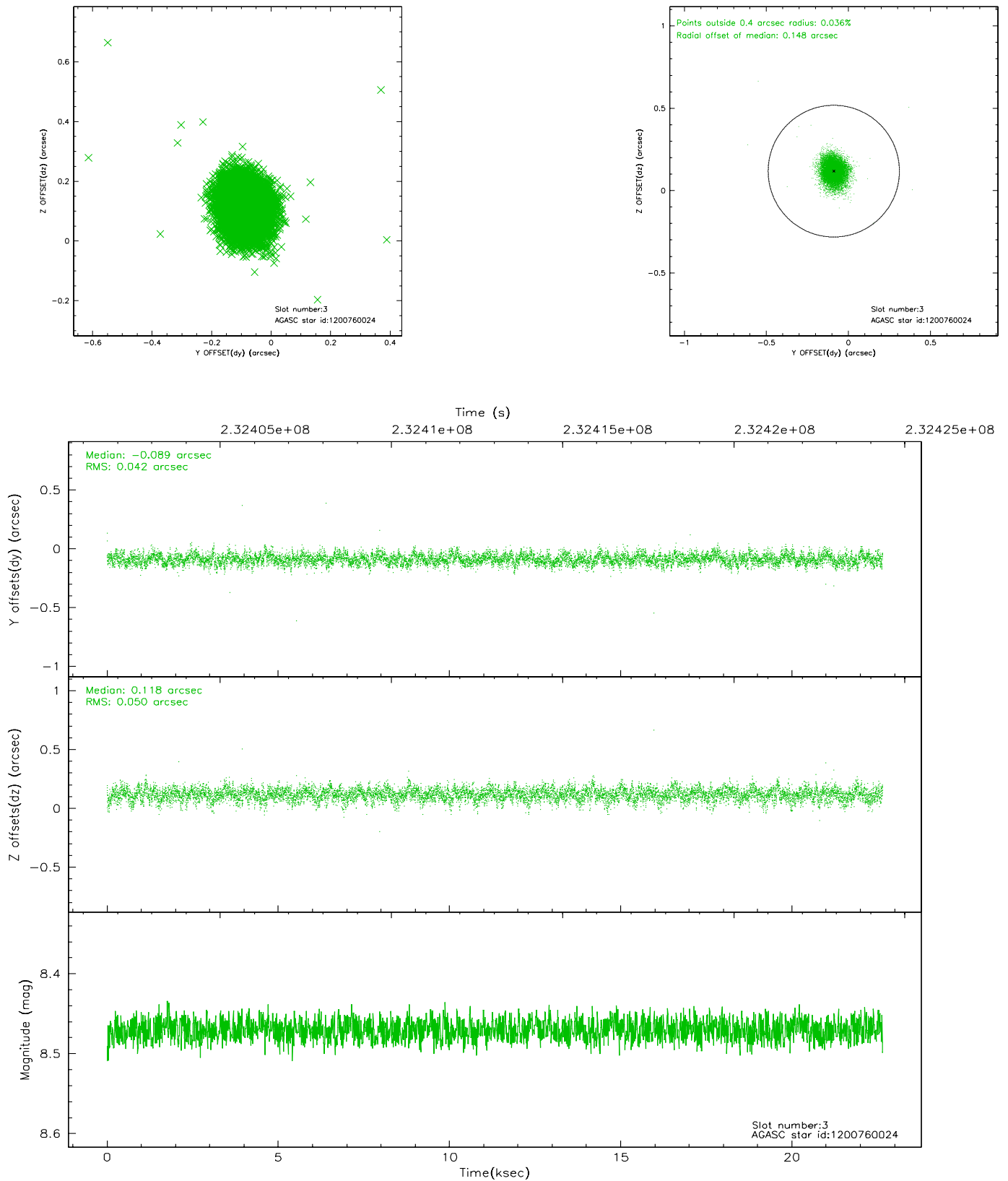


Slot Statistics

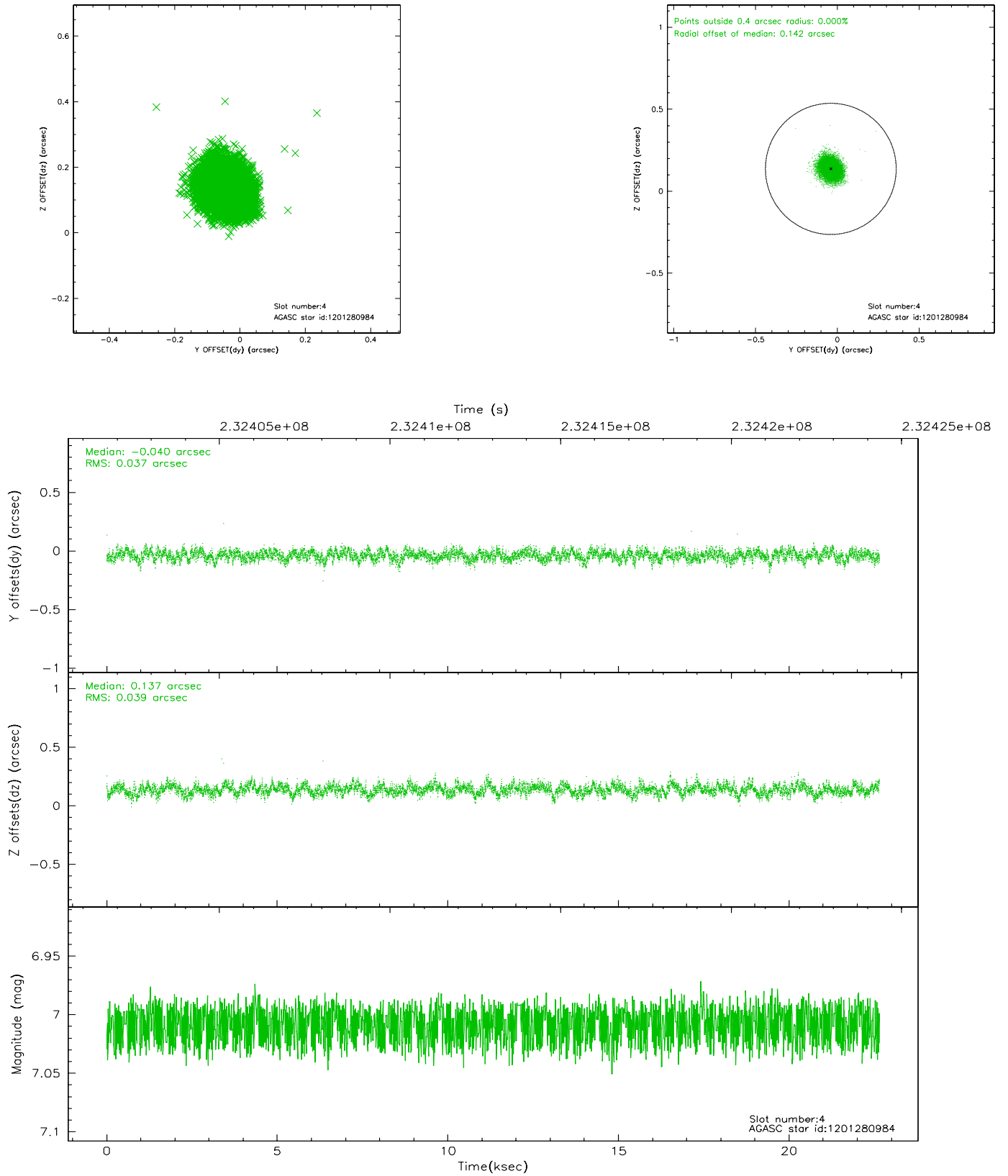
slot	status	id	mag	n_pts	med_dy	med_dz	dr1	dr2	ra	dec	mean_y	mean_z
0	FID	HRC-S-1	7.00	5525	0.117	-0.179	0.010	0.026	0.000000	0.000000	-1160.99	-458.44
1	FID	HRC-S-2	6.99	5525	0.168	-0.111	0.006	0.011	0.000000	0.000000	1238.53	-451.11
2	FID	HRC-S-3	7.01	5525	0.104	-0.011	0.011	0.031	0.000000	0.000000	-1163.49	571.17
3	GUIDE	1200760024	8.47	11045	-0.089	0.118	0.067	0.112	77.625244	-69.320410	163.35	-2159.38
4	GUIDE	1201280984	7.01	11051	-0.040	0.137	0.058	0.091	77.867422	-69.546090	237.77	-1294.55
5	GUIDE	1201406760	9.30	11042	-0.046	0.047	0.109	0.175	78.725555	-70.284883	454.13	1560.62
6	GUIDE	1201409432	9.03	11046	0.019	-0.224	0.087	0.142	79.317334	-70.259796	-228.56	1803.75
7	GUIDE	1201279208	9.19	11042	0.157	-0.077	0.109	0.175	76.214504	-69.704761	2357.54	-1648.69

2.4 Star Slots

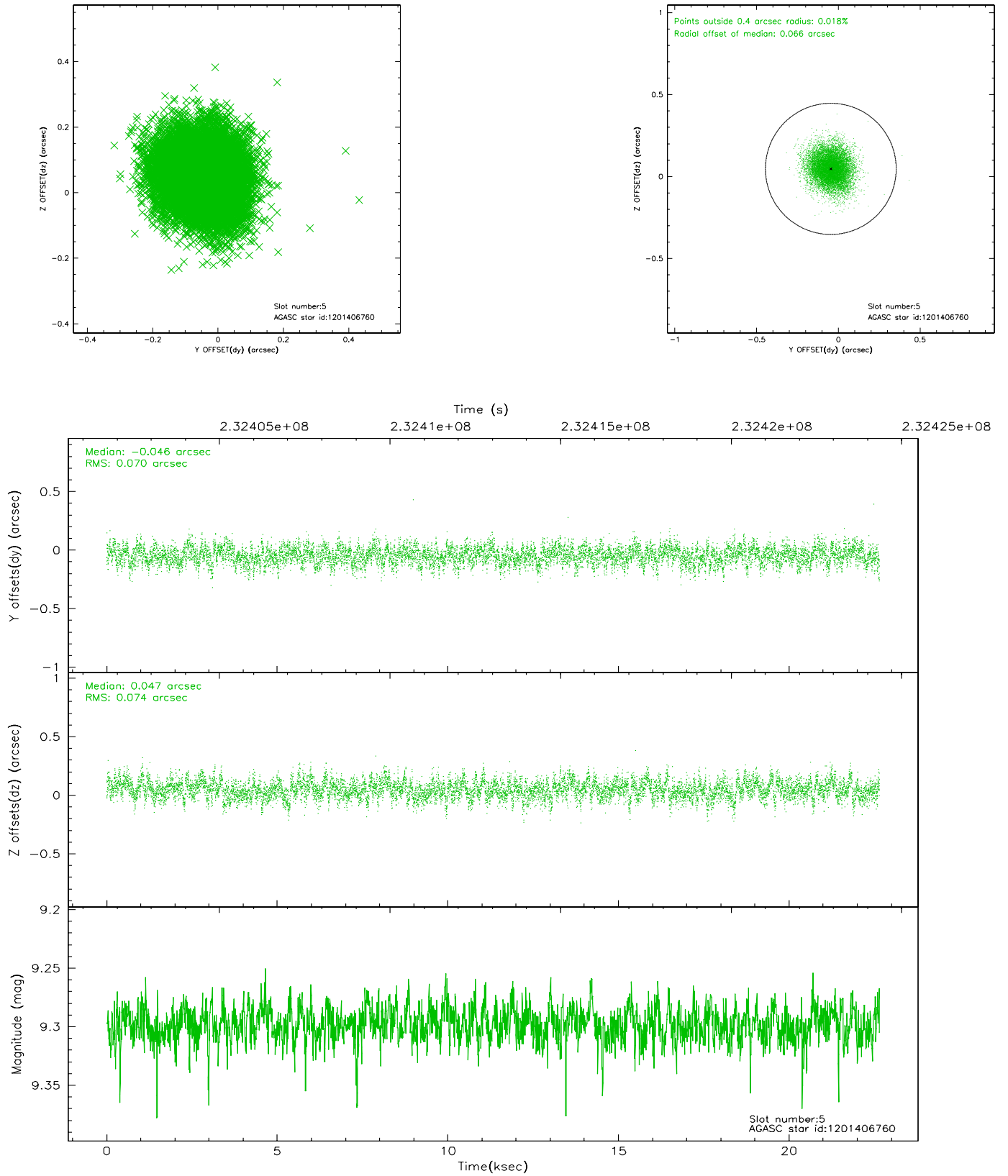
2.4.1 Slot 3



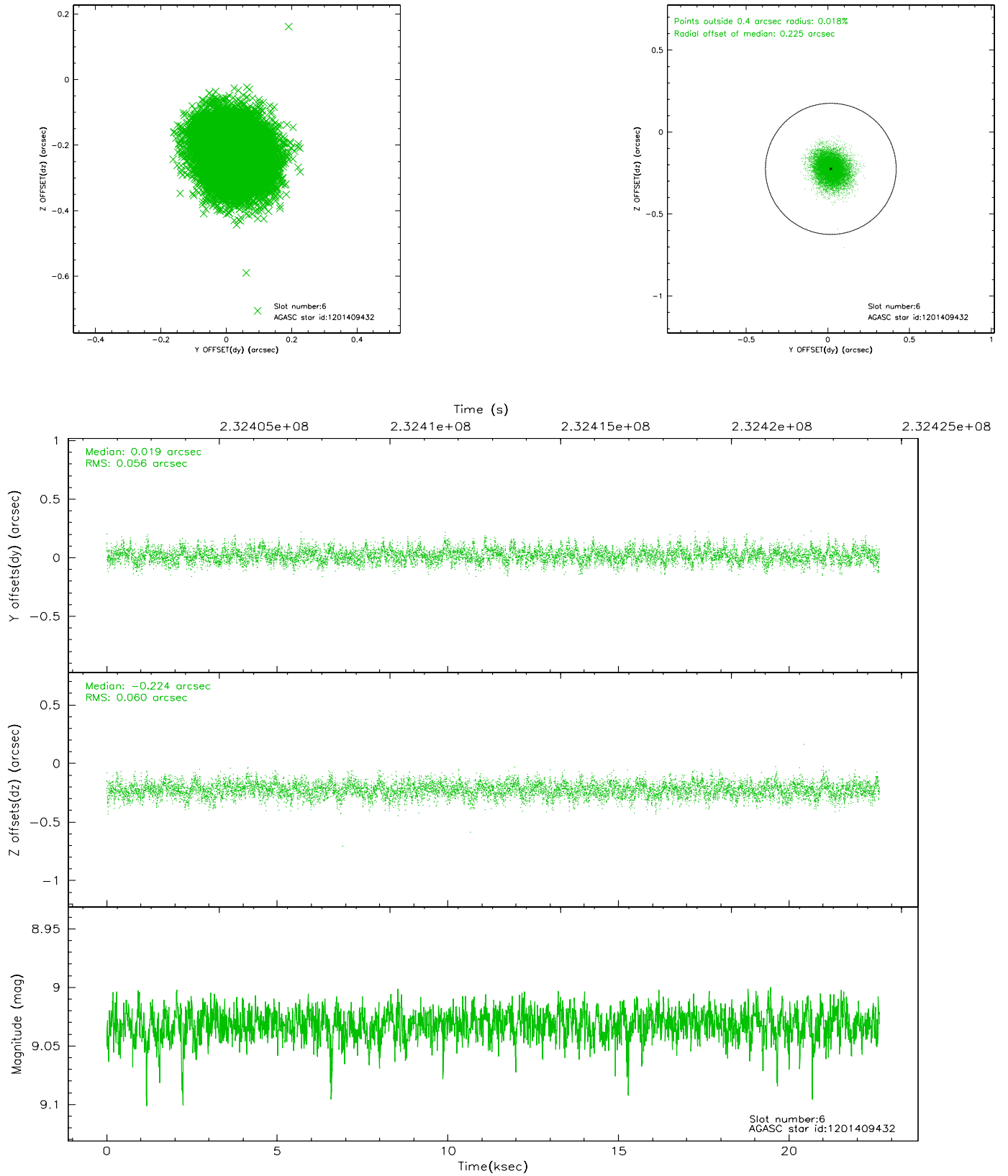
2.4.2 Slot 4



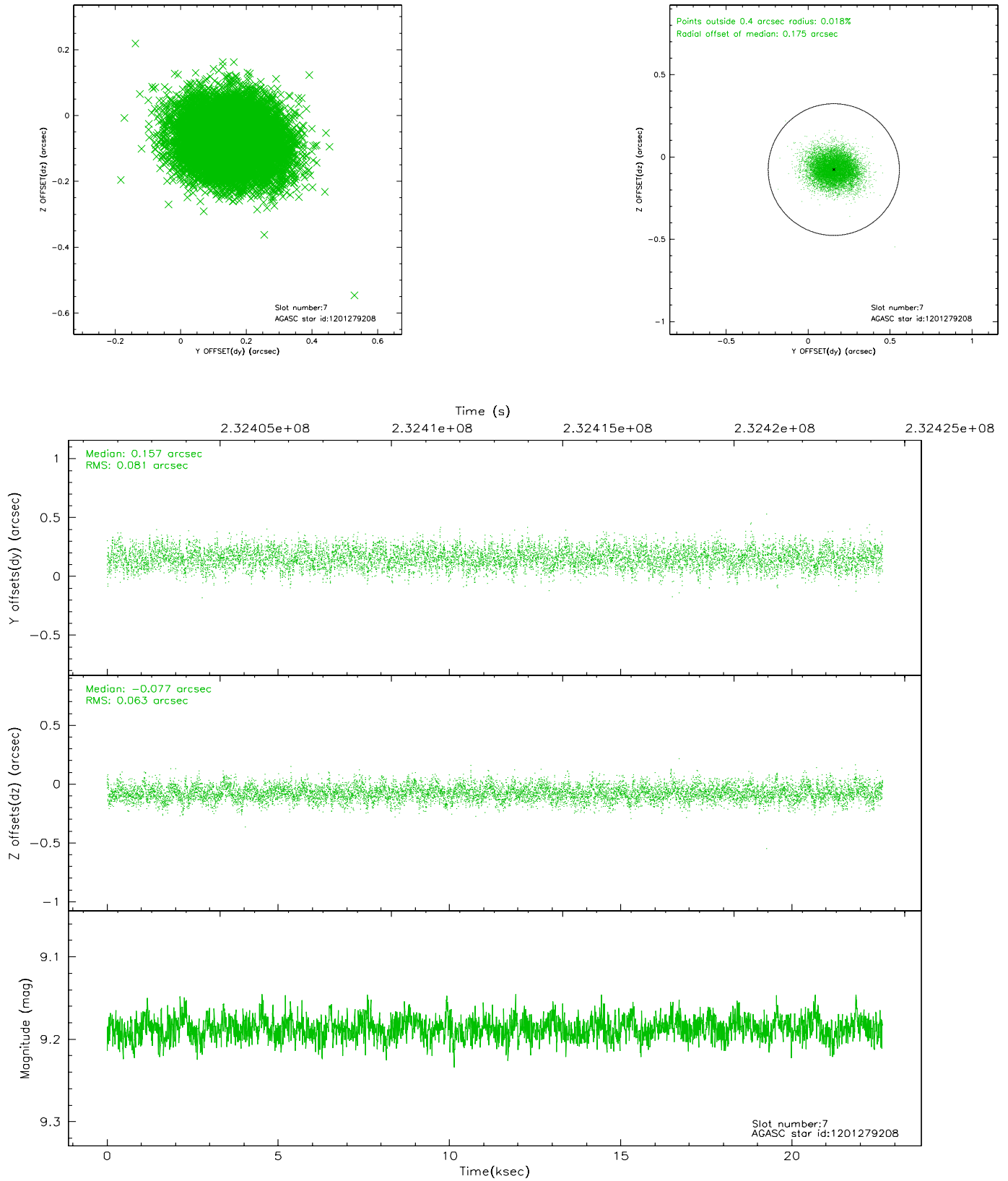
2.4.3 Slot 5



2.4.4 Slot 6

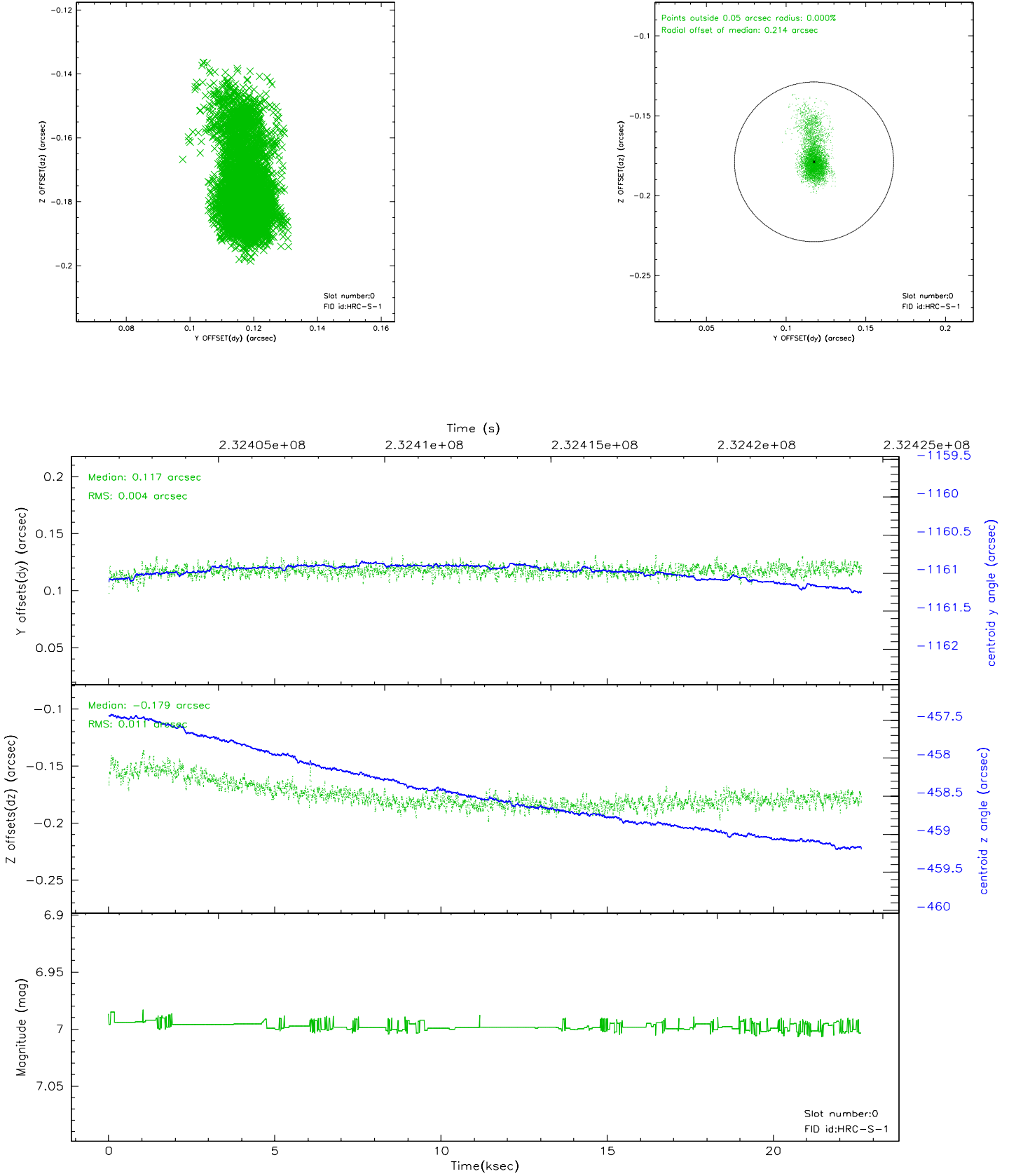


2.4.5 Slot 7

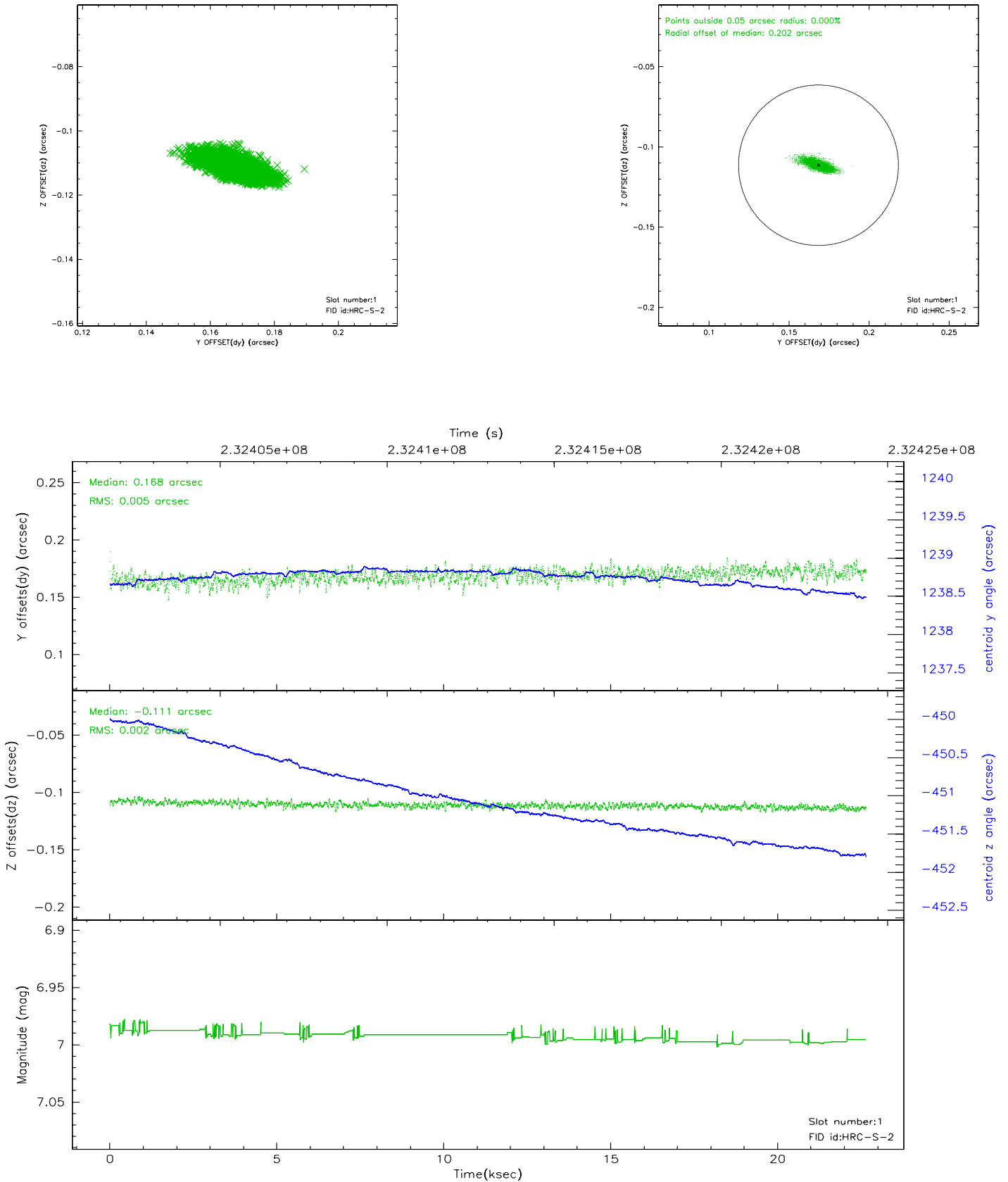


2.5 FID Slots

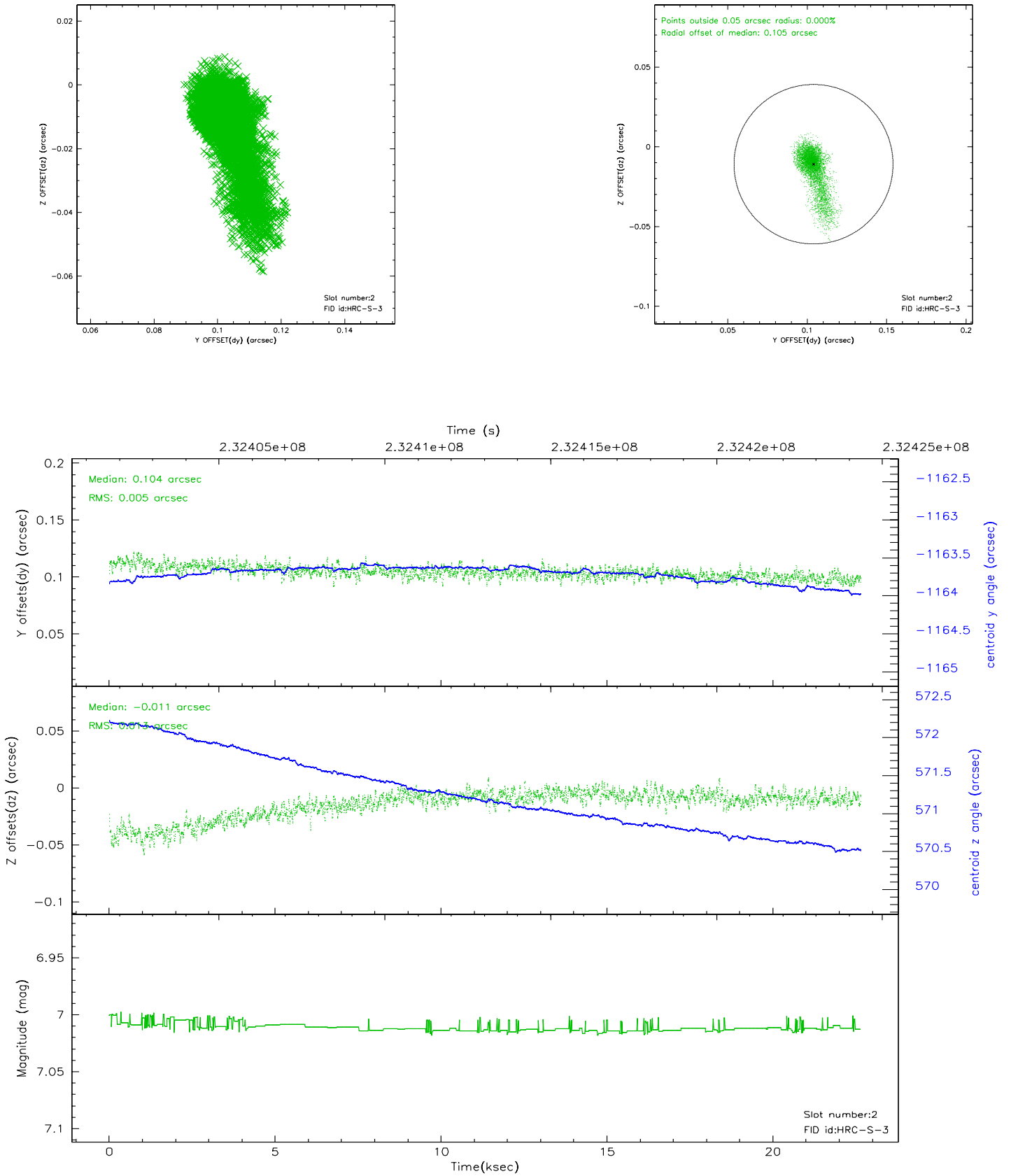
2.5.1 Slot 0



2.5.2 Slot 1

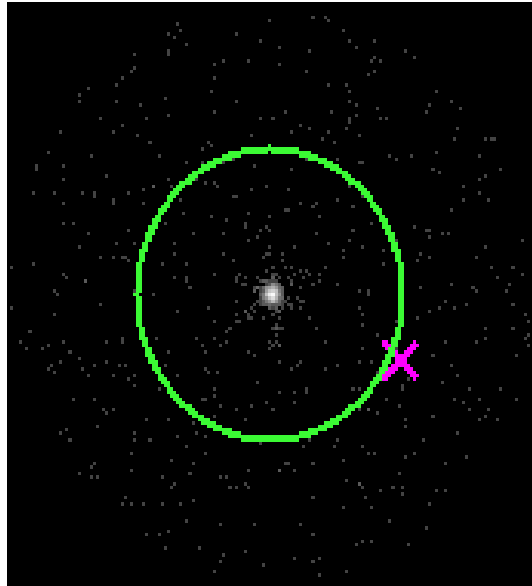


2.5.3 Slot 2



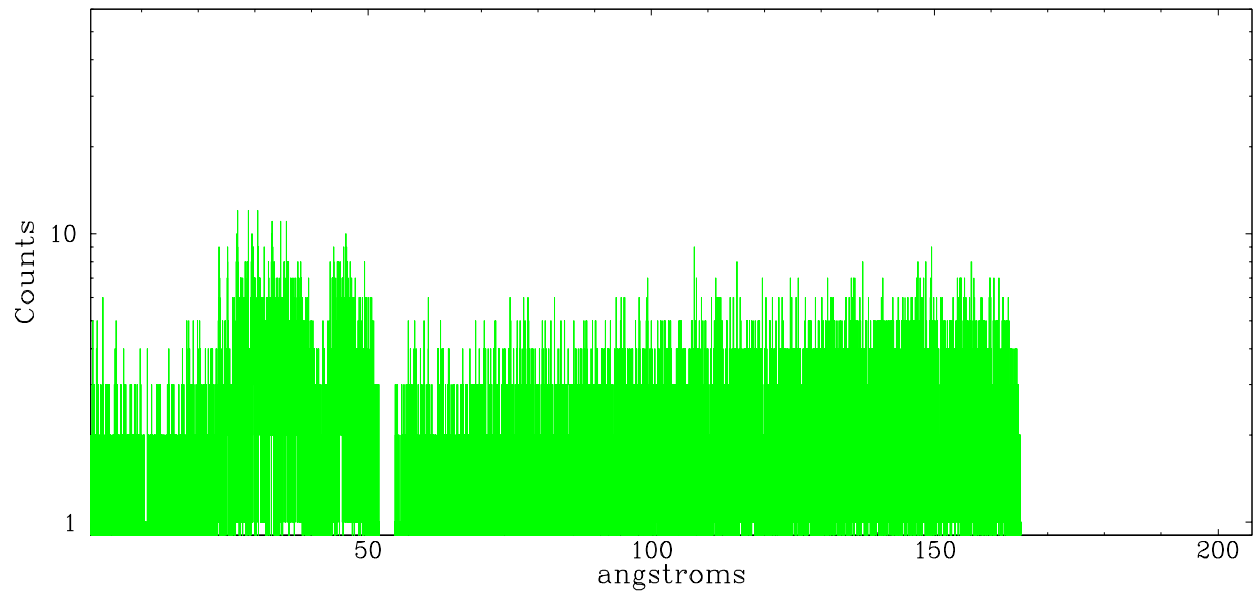
3 Gratings

3.1 LETG Arm

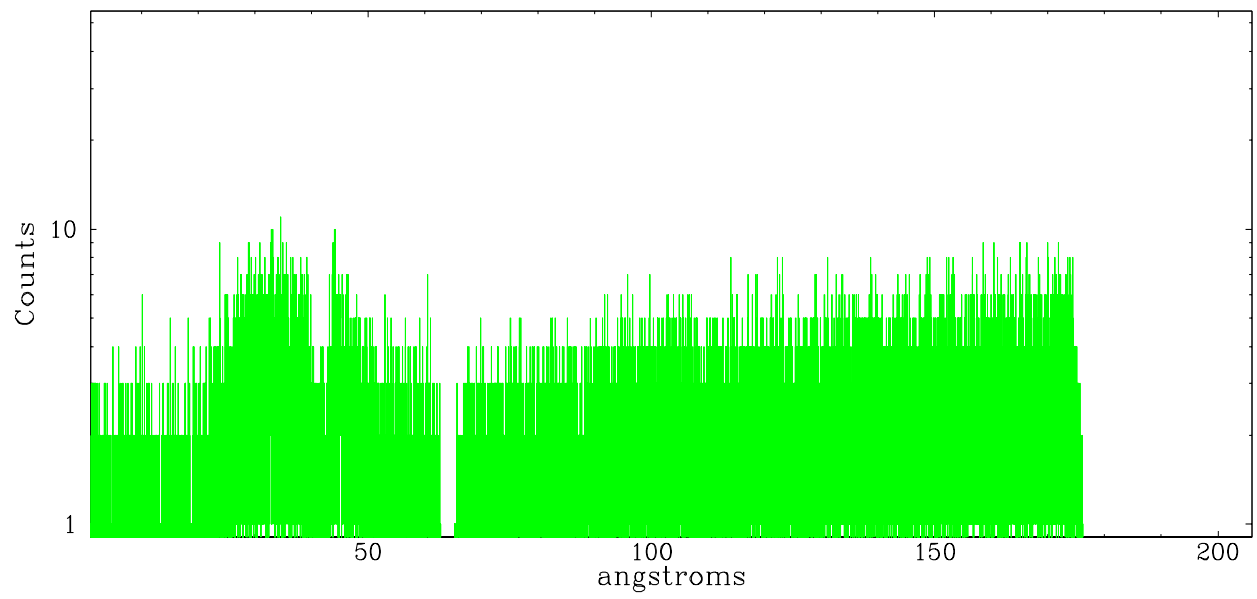


LETG Zero Order

leg order -1



leg order $+1$



A Summary

A.1 Status

V&V Scientist	Beth Sundheim
V&V Date (YYYY-MM-DD)	2006.03.03
V&V Edition	1
V&V Disposition and Status	OK
V&V Charge Time	22.65147

A.2 Comments