

V&V Reference Report

L2 ASCDS Version : 8.4.5

Observation 54413 - L2 Version 1
Chandra X-Ray Center

L2 Processing Date : Aug 11 2012

Contents

1	Front	2
2	OBI	3
2.1	OBI	3
2.1.1	Images	3
2.1.2	Bias	3
2.1.3	Parameters	4
2.1.4	Events	4
2.2	Compared Parameters	5
2.3	Star Slots	6
2.4	FID Slots	6
A	Summary	7
A.1	Status	7
A.2	Comments	7

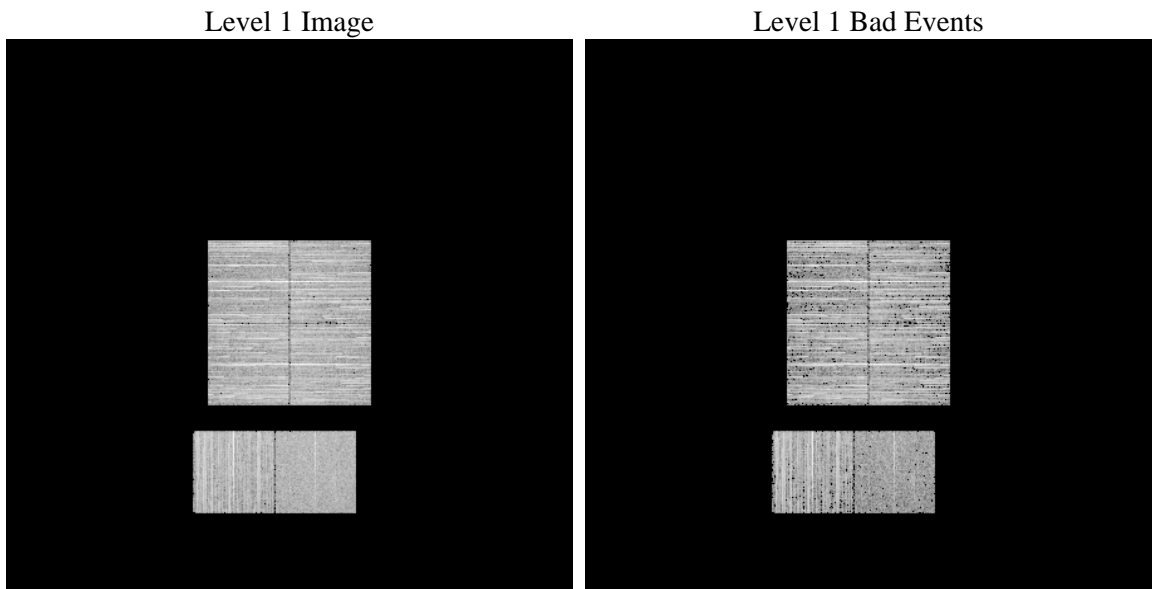
1 Front

seq_num	 	Sequence number
obs_id	54413	Observation id
title	ACIS-012367 diagnostics	Proposal title
observer	CHANDRA engineering request/realtime commanding	Principal investig
object	 	Source name
dtcycle	0	
cycle	P	events from which exps? Prim/Second/Both
ra_targ	0.0	Observer's specified target RA [deg]
dec_targ	0.0	Observer's specified target Dec [deg]
ra_nom	67.987181153929	Nominal RA [deg]
dec_nom	25.922386651546	Nominal Dec [deg]
roll_nom	93.0881085864	Nominal Roll [deg]
revision	1	Processing version of data
ontime	3292.7275268435	Sum of GTIs [s]
livetime	3251.0330282562	Livetime [s]
ontime0	3292.7685469985	Sum of GTIs [s]
ontime1	3292.799987793	Sum of GTIs [s]
ontime2	3292.799987793	Sum of GTIs [s]
ontime3	3292.6864669919	Sum of GTIs [s]
ontime6	3292.7751671672	Sum of GTIs [s]
ontime7	3292.7275268435	Sum of GTIs [s]
l2events	95656	Number of level 2 events

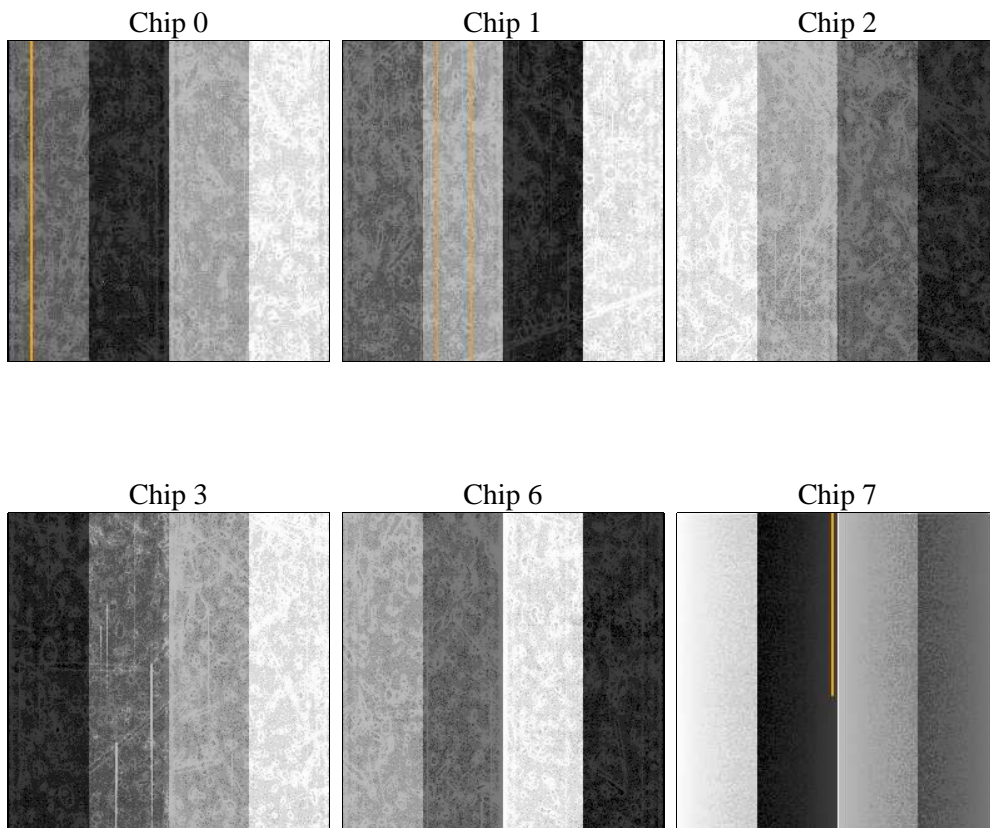
2 OBI

2.1 OBI

2.1.1 Images



2.1.2 Bias



2.1.3 Parameters

obi_num	0	Obi number	sched_exp_time	0.0	[s] Scheduled observation exposure time
ascdsver	8.4.5	Processing system revision	ontime	3292.7275268435	Sum of GTIs [s]
caldbver	4.5.1.1	 	ontime0	3292.7685469985	Sum of GTIs [s]
date	2012-08-12T02:12:55	Date and time of file creation	ontime1	3292.799987793	Sum of GTIs [s]
revision	1	Processing version of data	ontime2	3292.799987793	Sum of GTIs [s]
			ontime3	3292.6864669919	Sum of GTIs [s]
			ontime6	3292.7751671672	Sum of GTIs [s]
			ontime7	3292.7275268435	Sum of GTIs [s]
			l1events	378564	Number of level 1 events

2.1.4 Events

	ccd 0	ccd 1	ccd 2	ccd 3	ccd 6	ccd 7		ccd 0	ccd 1	ccd 2	ccd 3	ccd 6	ccd 7
level 1 events	65271	64989	66250	64907	65041	52106	grade 0 events	7723	7622	8020	7879	8020	3917
rejected events	50188	49898	51075	49882	49281	26908		11%	11%	12%	12%	12%	7%
rejected %	76%	76%	77%	76%	75%	51%	grade 1 events	30	40	60	55	40	36
								0%	0%	0%	0%	0%	0%
							grade 2 events	2977	3093	2928	2837	3156	6179
								4%	4%	4%	4%	4%	11%
							grade 3 events	1003	962	1001	1022	972	2182
								1%	1%	1%	1%	1%	4%
							grade 4 events	1007	969	987	1048	986	2084
								1%	1%	1%	1%	1%	3%
							grade 5 events	1149	1162	1124	1278	1194	3063
								1%	1%	1%	1%	1%	5%
							grade 6 events	2373	2445	2239	2239	2626	10836
								3%	3%	3%	3%	4%	20%
							grade 7 events	49009	48696	49891	48549	48047	23809
								75%	74%	75%	74%	73%	45%

2.2 Compared Parameters

Parameter	Planned	Actual	Parameter	Planned	Actual
Instrument	ACIS	ACIS	Obspar format version number	7	7
Detector	ACIS-012367	ACIS-012367	Obspar file type	PREDICTED	ACTUAL
Grating	NONE	NONE	Obspar update status	NONE	UPDATED
Data mode	FAINT	FAINT	Number of optional ACIS chips dropped	0	0
Observation mode	SECONDARY	SECONDARY	On-chip summing requested	N	N
[deg] Pointing RA	0	67.98718115392873	Subarray requested	NONE	NONE
[deg] Pointing Dec	0	25.92238665154562	Alternating exposures requested	N	N
[deg] Pointing Roll	0.0	93.08810858640004	[s] Primary exposure time	3.2	3.2
[mm] SIM focus pos	-1.429586	-1.428180813131781			
[mm] SIM defocus	0.1037507710433287	0.1051558262725154			
[mm] SIM translation stage pos	250.455976	250.4635187648994			
[mm] SIM translation stage offset	0	-0.007540371344731511			
[s] Observation start time (MET)	461078137.317964	461078136.29296			
Observation start date	2012-08-11T13:15:37	2012-08-11T13:15:36			
[s] Observation end time (MET)	461085753.068371	461085752.04337			
Observation end date	2012-08-11T15:22:33	2012-08-11T15:22:32			
Read mode	TIMED	TIMED			

2.3 Star Slots

2.4 FID Slots

A Summary

A.1 Status

V&V Scientist	Jen Lauer
V&V Date (YYYY-MM-DD)	2012.08.12
V&V Edition	1
V&V Disposition and Status	OK
V&V Charge Time	3.2927275268435

A.2 Comments