

# V&V Reference Report

## L2 ASCDS Version : 7.6.7.2

Observation 5303 - L2 Version 001  
Chandra X-Ray Center

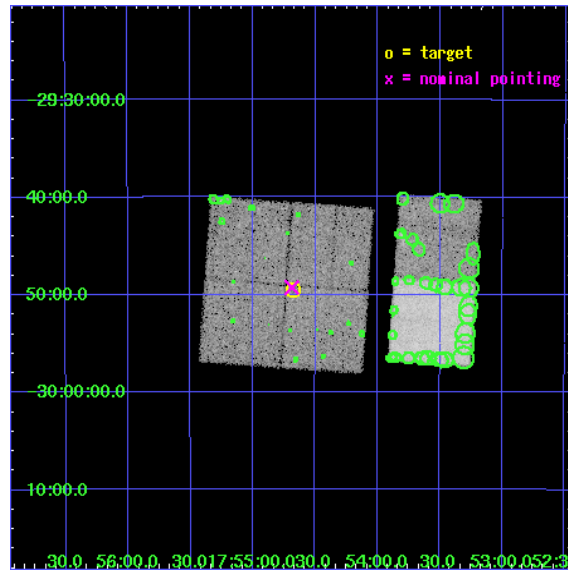
L2 Processing Date : Jun 2 2006

## Contents

<b>1</b>	<b>Front</b>	<b>2</b>
<b>2</b>	<b>OBI</b>	<b>3</b>
2.1	OBI . . . . .	3
2.1.1	Images . . . . .	3
2.1.2	Bias . . . . .	3
2.1.3	Parameters . . . . .	4
2.1.4	Events . . . . .	4
2.2	Compared Parameters . . . . .	5
2.3	Aspect . . . . .	6
2.4	Star Slots . . . . .	9
2.4.1	Slot 3 . . . . .	9
2.4.2	Slot 4 . . . . .	10
2.4.3	Slot 5 . . . . .	11
2.4.4	Slot 6 . . . . .	12
2.4.5	Slot 7 . . . . .	13
2.5	FID Slots . . . . .	14
2.5.1	Slot 0 . . . . .	14
2.5.2	Slot 1 . . . . .	15
2.5.3	Slot 2 . . . . .	16
<b>3</b>	<b>Point Sources</b>	<b>17</b>
<b>A</b>	<b>Summary</b>	<b>18</b>
A.1	Status . . . . .	18
A.2	Comments . . . . .	18

# 1 Front

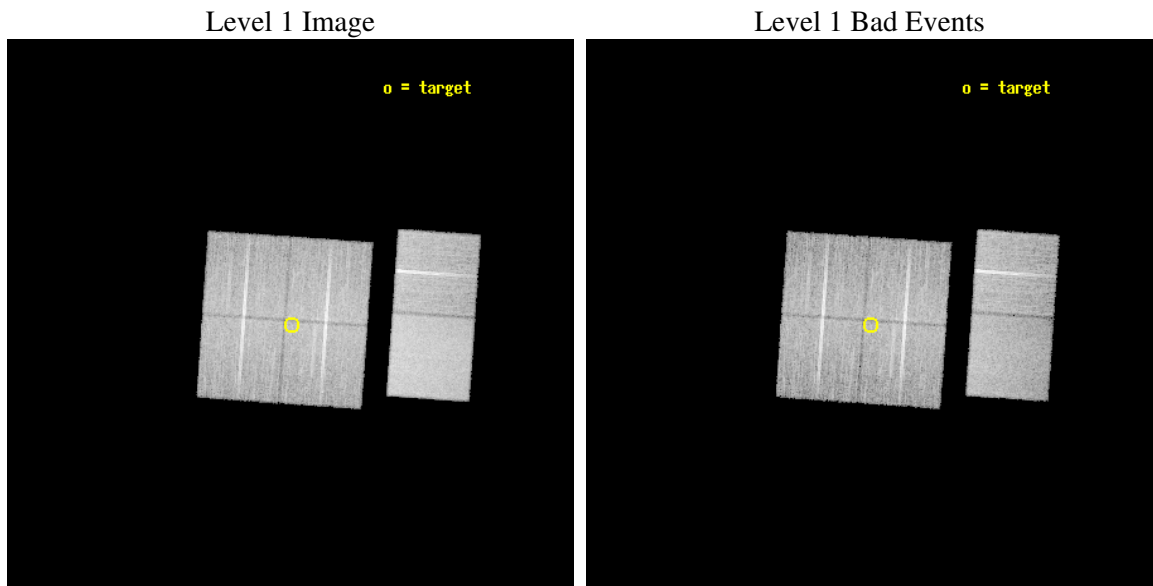
seq_num	300141
obs_id	5303
title	Galactic Bulge Deep Survey
observer	Prof. Jonathan Grindlay
object	Stanek window
dtcycle	0
cycle	P
ra_targ	268.67
dec_targ	-29.825556
ra_nom	268.67174882298
dec_nom	-29.821197561847
roll_nom	94.009556094162
revision	2
ontime	18751.958959848
livetime	18514.510364424
ontime0	18755.15692541
ontime1	18755.197965384
ontime2	18755.199930131
ontime3	18751.958959848
ontime6	18755.199930131
ontime7	18755.199930131
l2events	155005



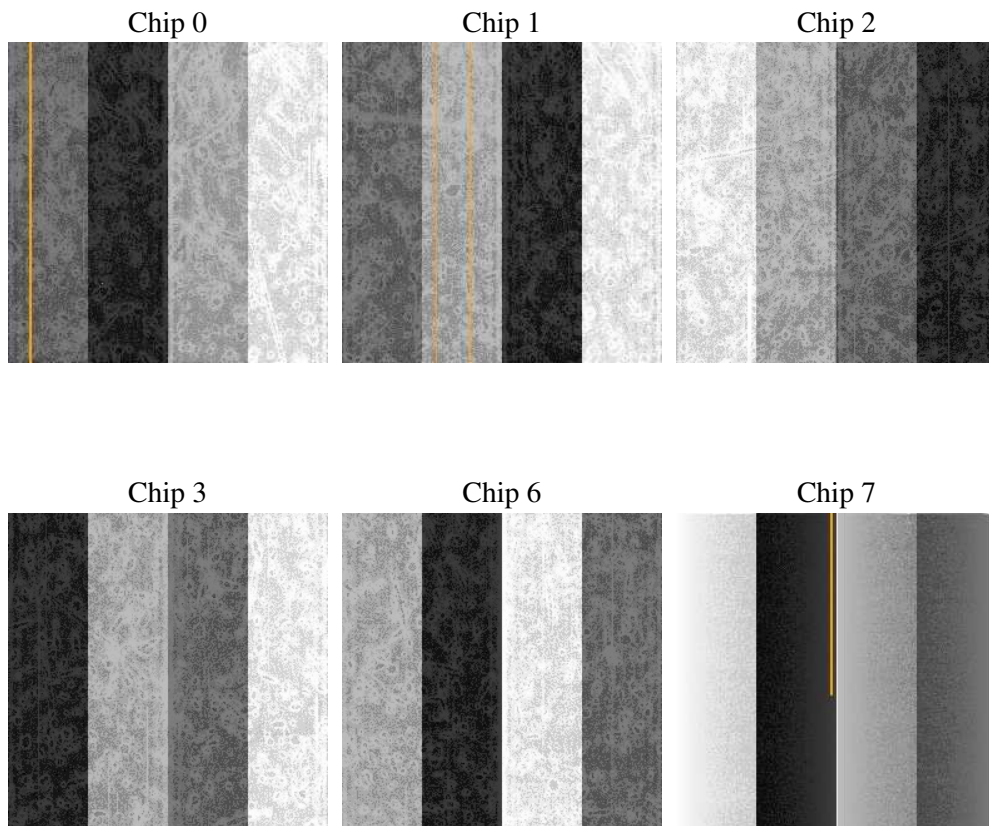
## 2 OBI

### 2.1 OBI

#### 2.1.1 Images



#### 2.1.2 Bias



### 2.1.3 Parameters

obi_num	0
ascdsver	7.6.7.2
caldsver	3.2.2
date	2006-06-02T11:58:14
revision	2

sched_exp_time	19000.000000
ontime	18755.670950145
ontime0	18758.911920428
ontime1	18758.911920428
ontime2	18758.91190055
ontime3	18755.670950145
ontime6	18758.911920428
ontime7	18758.911920428
l1events	781717

### 2.1.4 Events

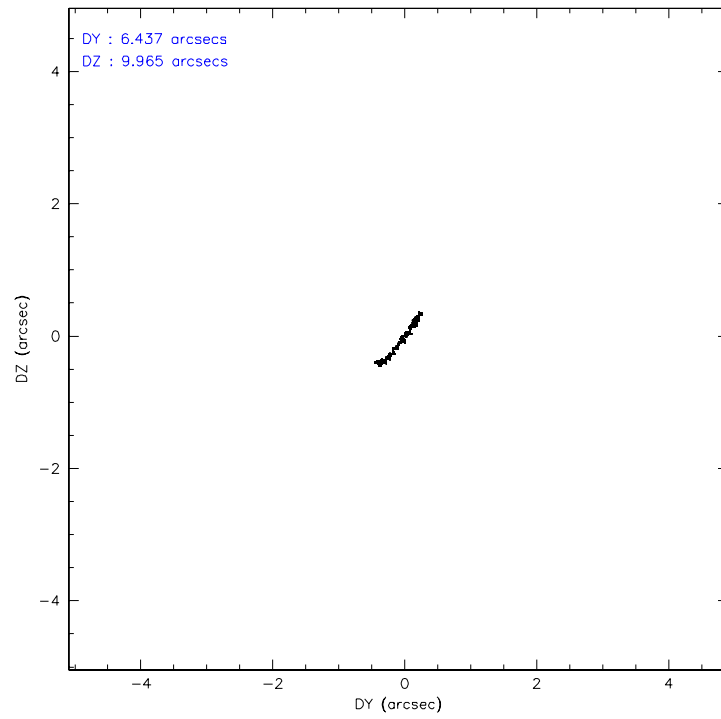
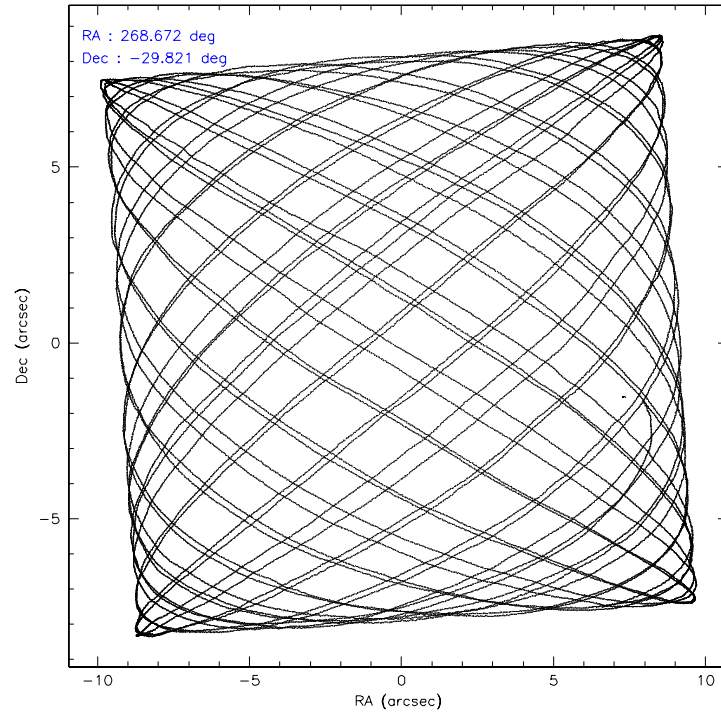
	ccd 0	ccd 1	ccd 2	ccd 3	ccd 6	ccd 7
level 1 events	116864	116281	125492	120898	130136	172046
rejected events	97596	96835	105689	101574	109815	102334
rejected %	83%	83%	84%	84%	84%	59%

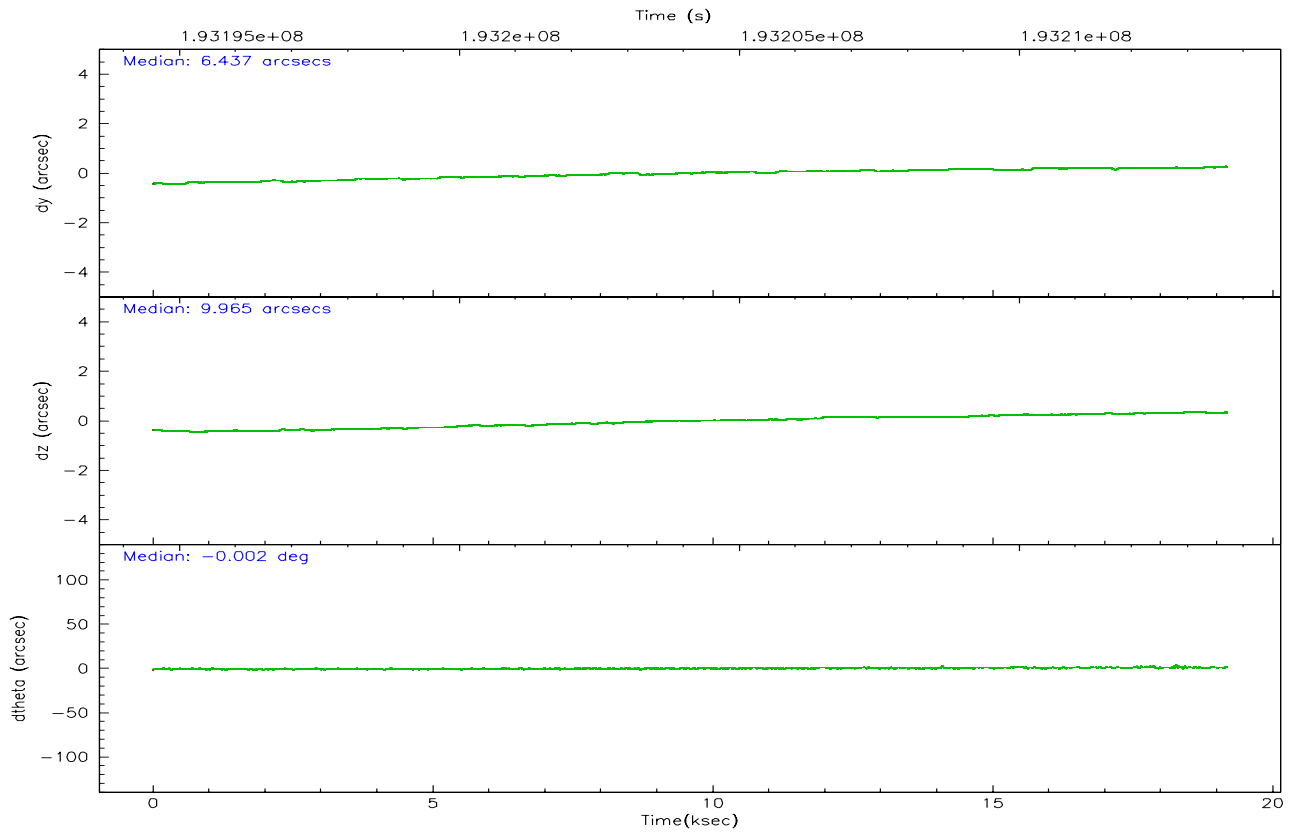
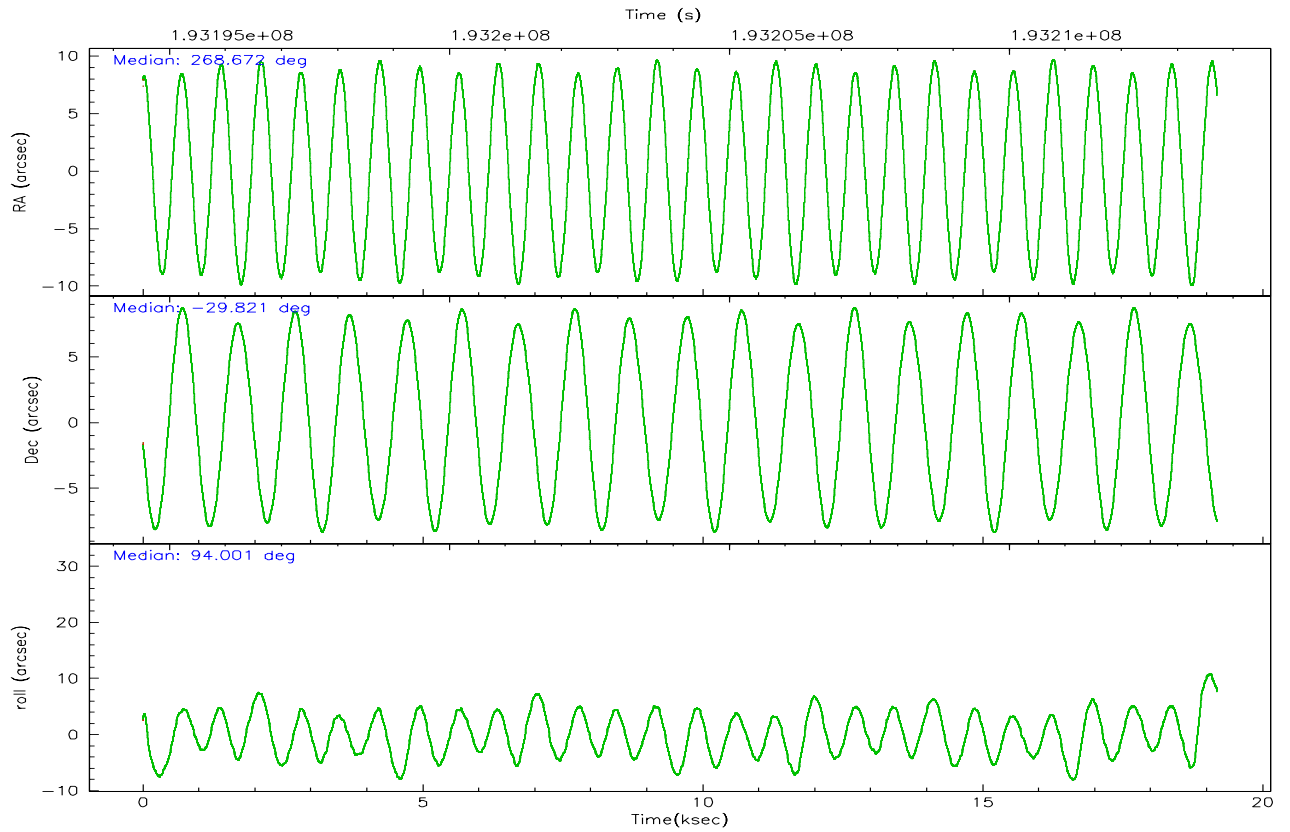
	ccd 0	ccd 1	ccd 2	ccd 3	ccd 6	ccd 7
grade 0 events	10037	9643	11130	10701	10570	5465
	8%	8%	8%	8%	8%	3%
grade 1 events	70	66	89	100	74	121
	0%	0%	0%	0%	0%	0%
grade 2 events	3470	3514	3395	3107	3570	17676
	2%	3%	2%	2%	2%	10%
grade 3 events	1573	1584	1394	1544	1585	3974
	1%	1%	1%	1%	1%	2%
grade 4 events	1497	1652	1493	1456	1504	3808
	1%	1%	1%	1%	1%	2%
grade 5 events	5021	5082	4706	5480	5724	11193
	4%	4%	3%	4%	4%	6%
grade 6 events	2694	3056	2394	2517	3099	38796
	2%	2%	1%	2%	2%	22%
grade 7 events	92502	91684	100891	95993	104010	91013
	79%	78%	80%	79%	79%	52%

## 2.2 Compared Parameters

Parameter	Planned	Actual	Parameter	Planned	Actual
Instrument	ACIS	ACIS	Obspar format version number	6	6
Detector	ACIS-012367	ACIS-012367	Obspar file type	PREDICTED	ACTUAL
Grating	NONE	NONE	Obspar update status	NONE	UPDATED
Data mode	FAINT	FAINT	On-chip summing requested	N	N
Observation mode	POINTING	POINTING	Subarray requested	NONE	NONE
Pointing RA	268.689497	268.6717488229811	Alternating exposures requested	N	N
Pointing Dec	-29.843806	-29.82119756184742	Primary exposure time	0.000000	3.2
Pointing Roll	93.809701	94.00955609416249			
SIM focus pos (mm)	-0.782348	-0.7809083437167272			
SIM defocus (mm)	0	0.001439871863259334			
SIM translation stage pos (mm)	-233.592463	-233.5874344608287			
SIM translation stage offset (mm)	0	-0.005018542100998502			
Observation start time	193194718.184000	193192970.81771			
Observation start date	2004-02-15T01:10:54	2004-02-15T00:42:50			
Observation end time	193213718.184000	193214472.75615			
Observation end date	2004-02-15T06:27:34	2004-02-15T06:41:12			
Read mode	TIMED	TIMED			

## 2.3 Aspect





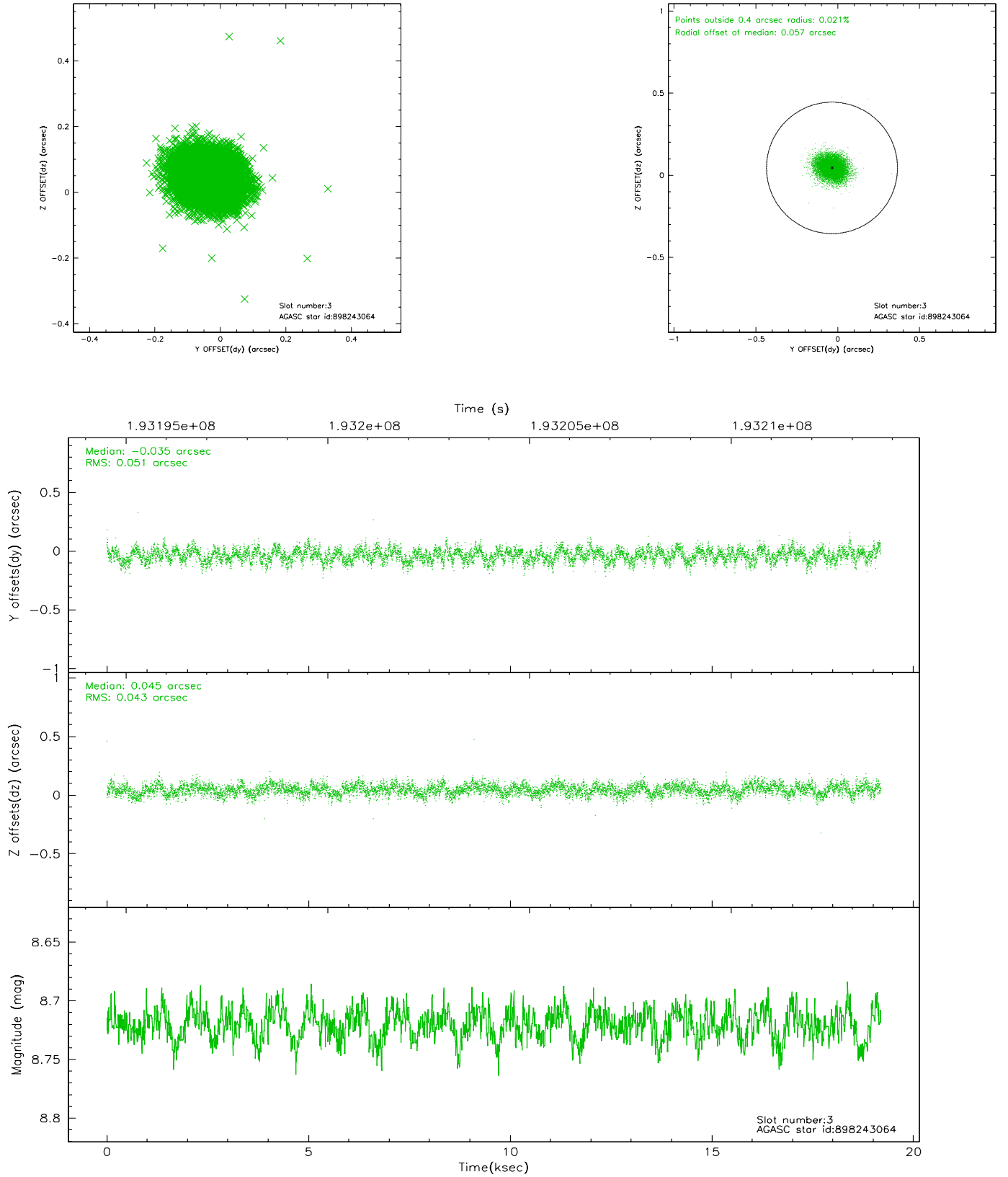
### Slot Statistics

slot	status	id	mag	n_pts	med_dy	med_dz	dr1	dr2	ra	dec	mean_y	mean_z
0	FID	ACIS-I-1	7.24	4681	-0.016	0.044	0.016	0.024	0.000000	0.000000	933.28	-833.36
1	FID	ACIS-I-5	7.23	4680	-0.111	0.023	0.006	0.011	0.000000	0.000000	-1814.81	1064.02
2	FID	ACIS-I-6	7.25	4681	0.036	0.004	0.013	0.022	0.000000	0.000000	398.66	1708.72
3	GUIDE	898243064	8.72	9360	-0.035	0.045	0.071	0.114	268.852106	-29.678564	559.65	-546.53
4	GUIDE	898259072	8.73	9358	-0.131	0.230	0.085	0.132	269.401862	-29.860959	-215.77	-2214.06
5	GUIDE	967057128	9.35	9353	0.082	-0.186	0.110	0.181	267.996939	-30.494743	-2202.07	2299.45
6	GUIDE	967070136	8.74	9358	0.089	0.093	0.080	0.134	269.219754	-30.286661	-1703.80	-1538.17
7	GUIDE	967053960	9.24	9355	-0.009	-0.182	0.080	0.130	268.185736	-30.091336	-788.54	1624.99

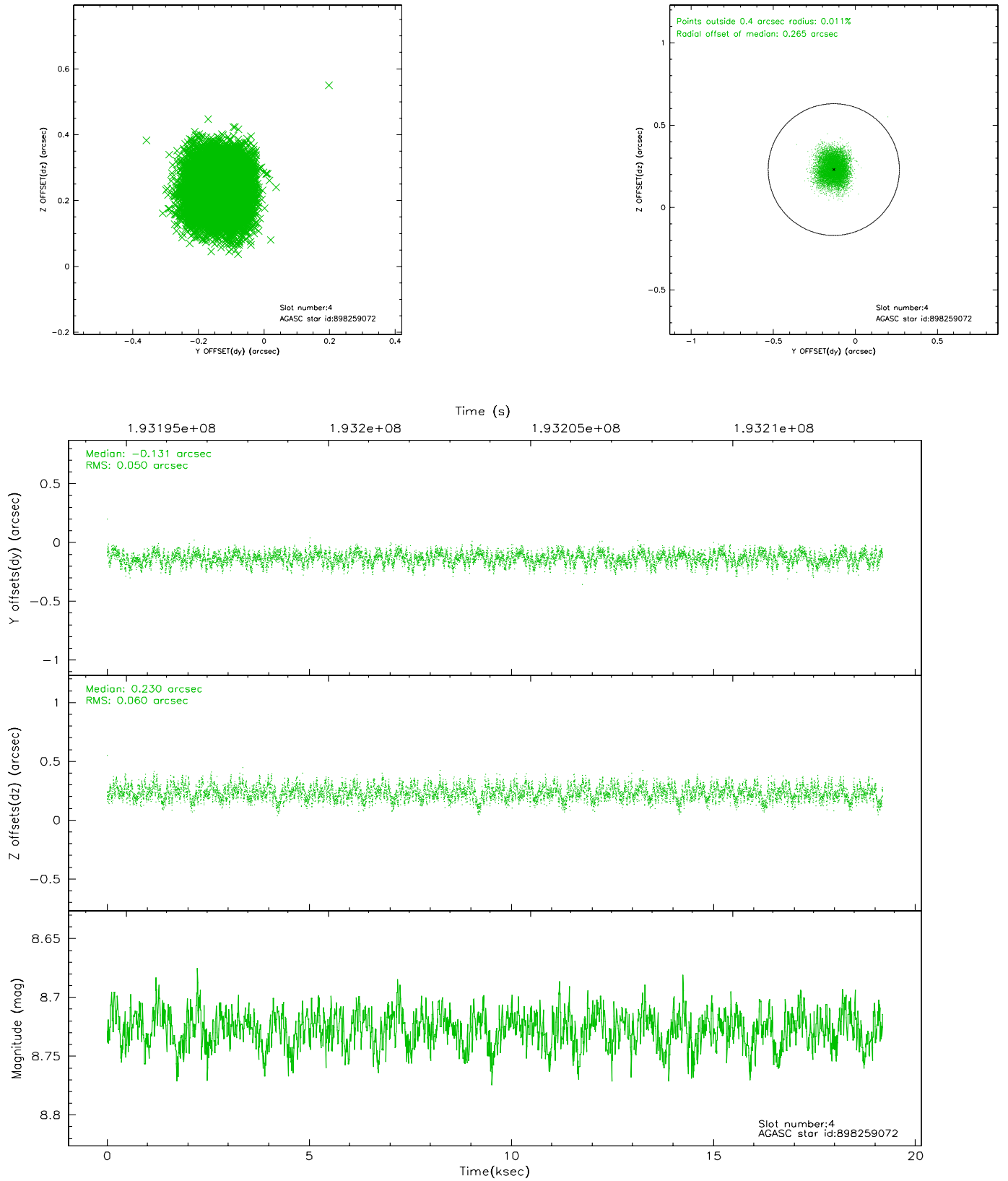


## 2.4 Star Slots

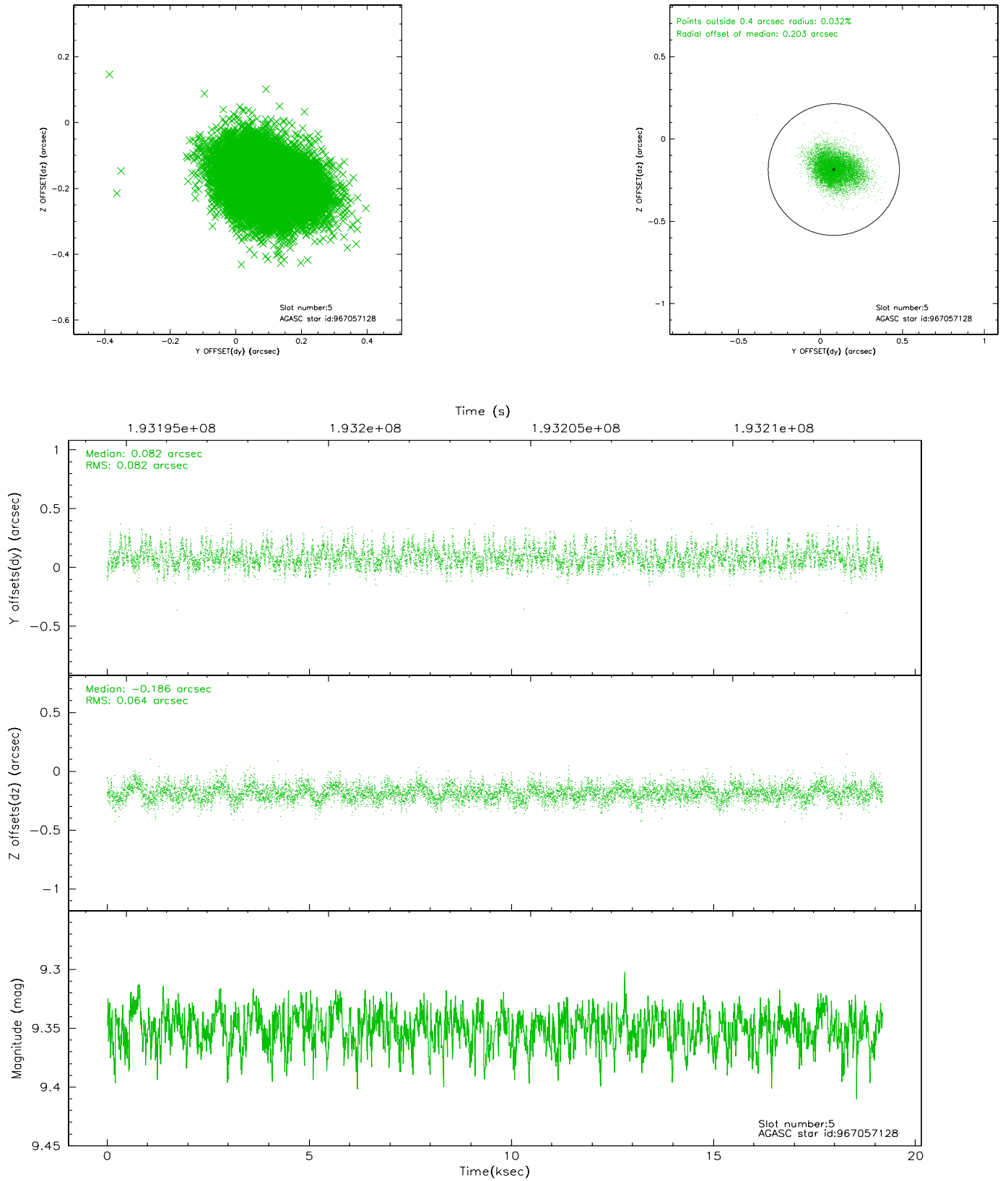
### 2.4.1 Slot 3



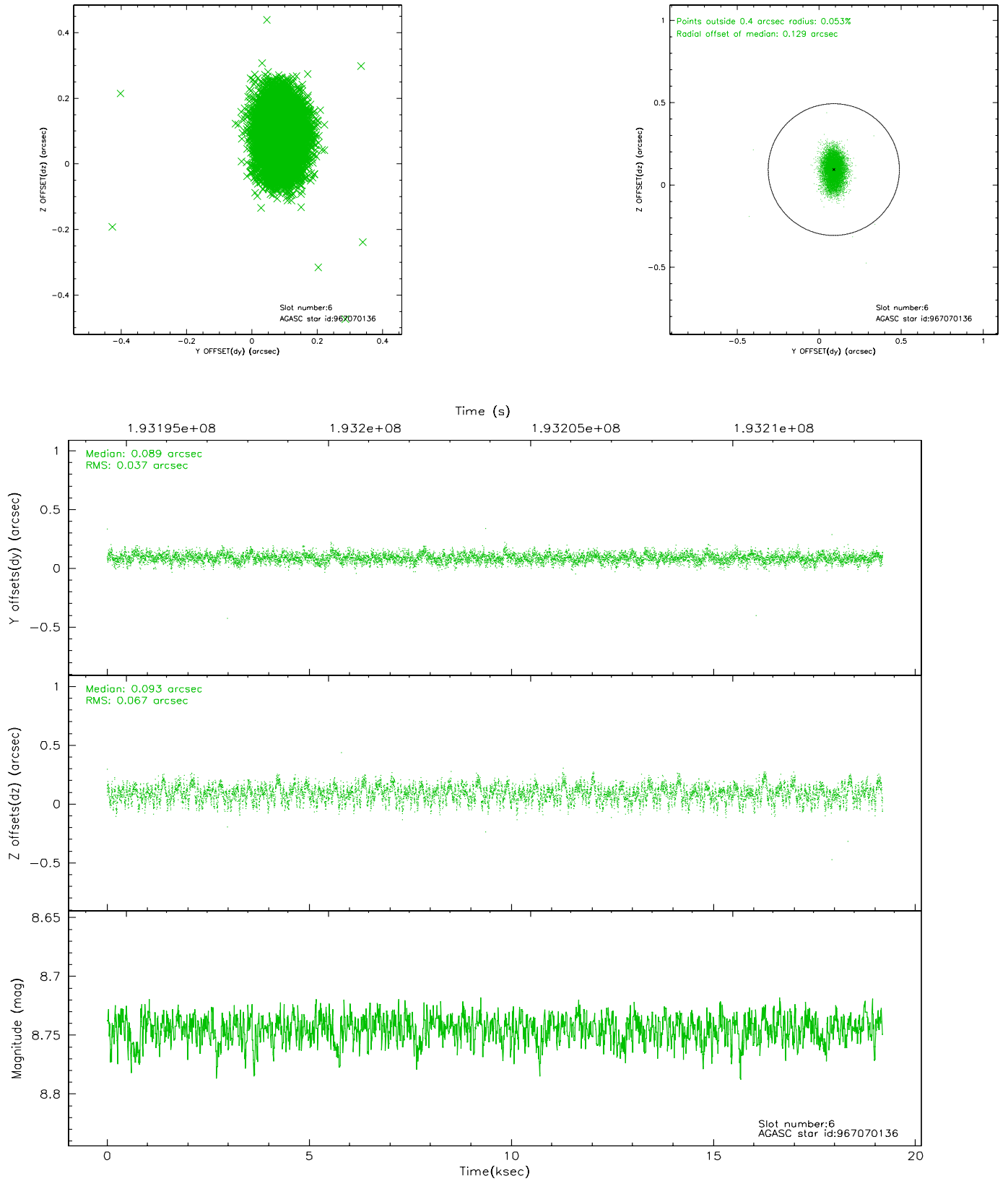
## 2.4.2 Slot 4



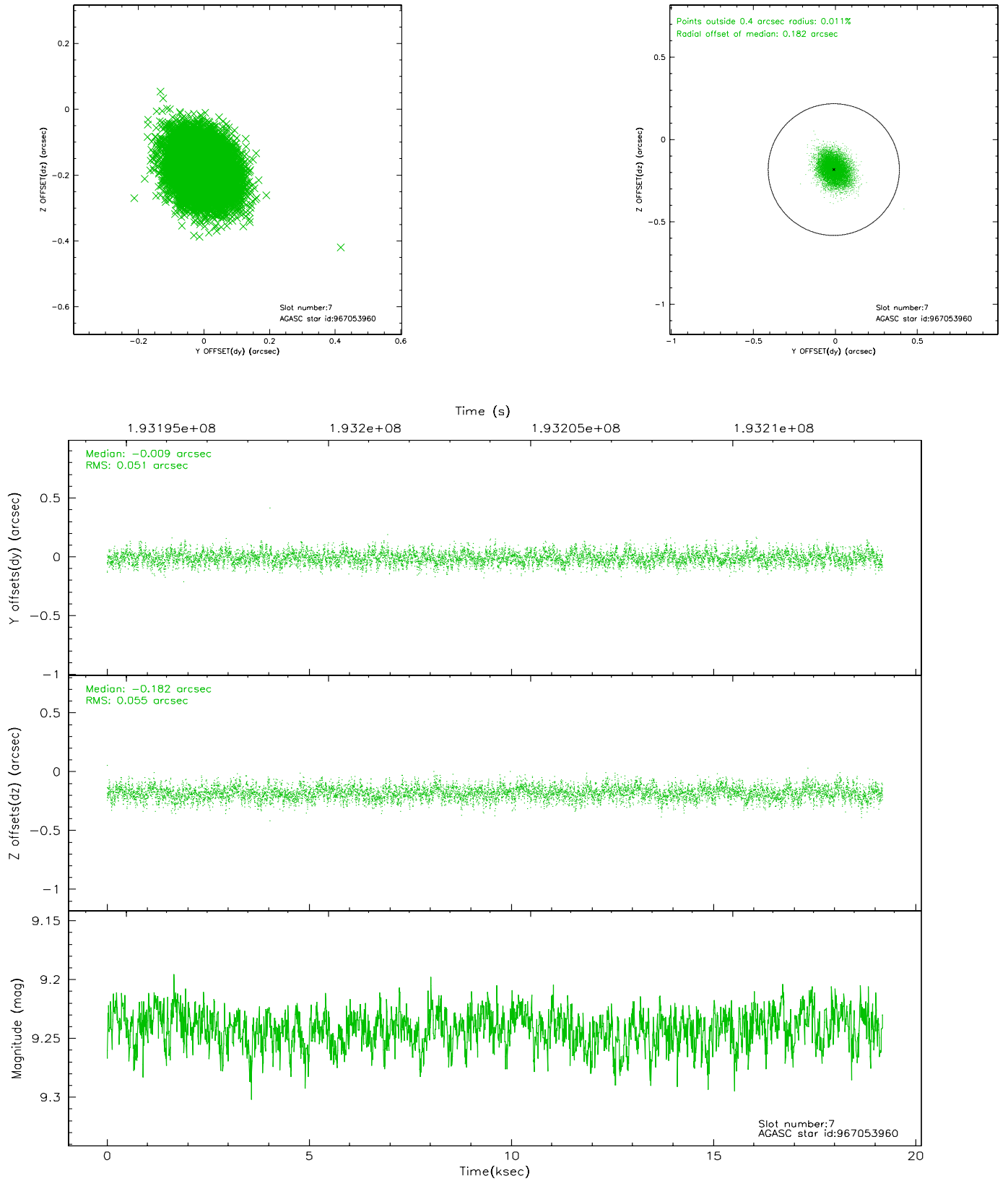
### 2.4.3 Slot 5



## 2.4.4 Slot 6

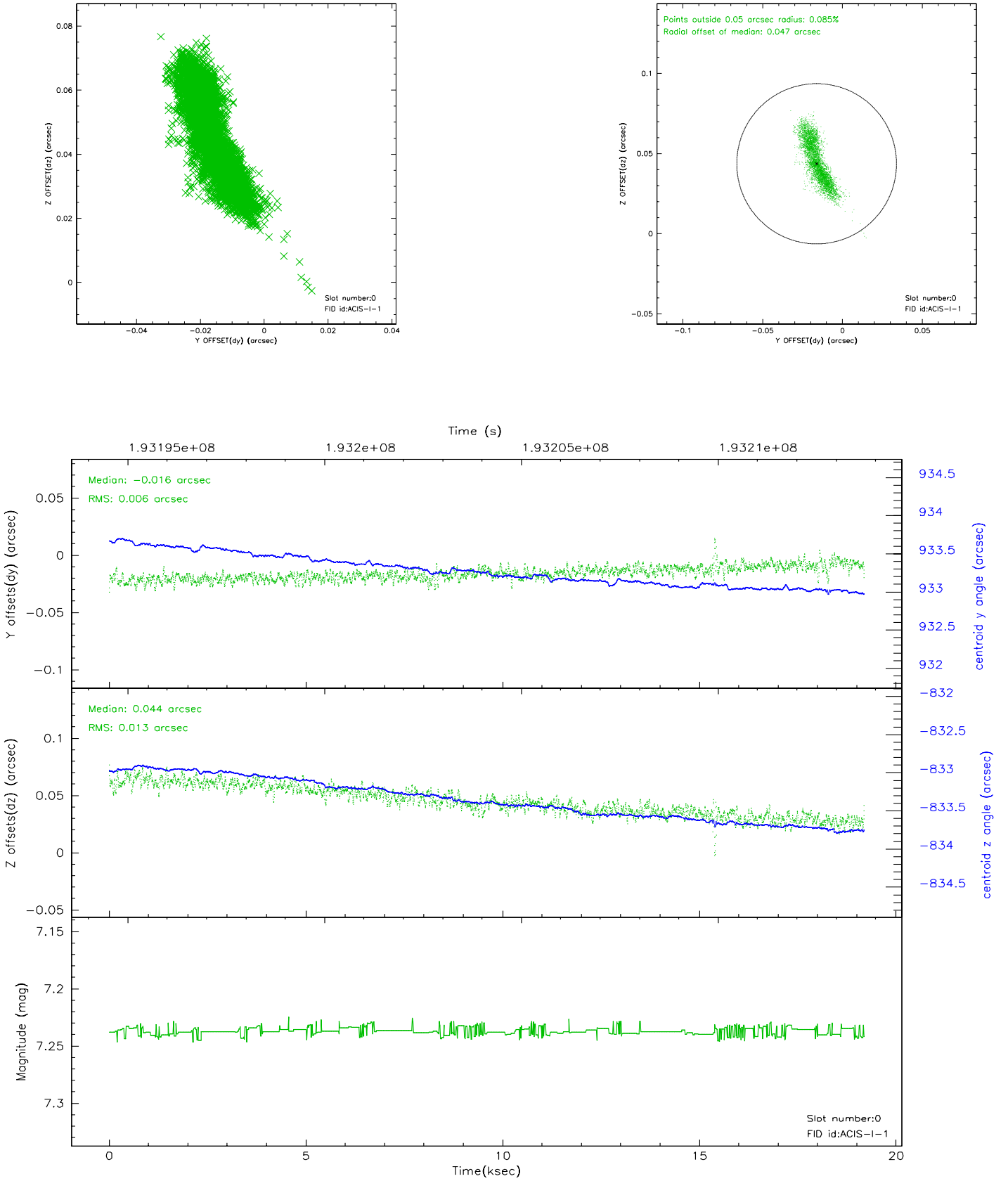


## 2.4.5 Slot 7

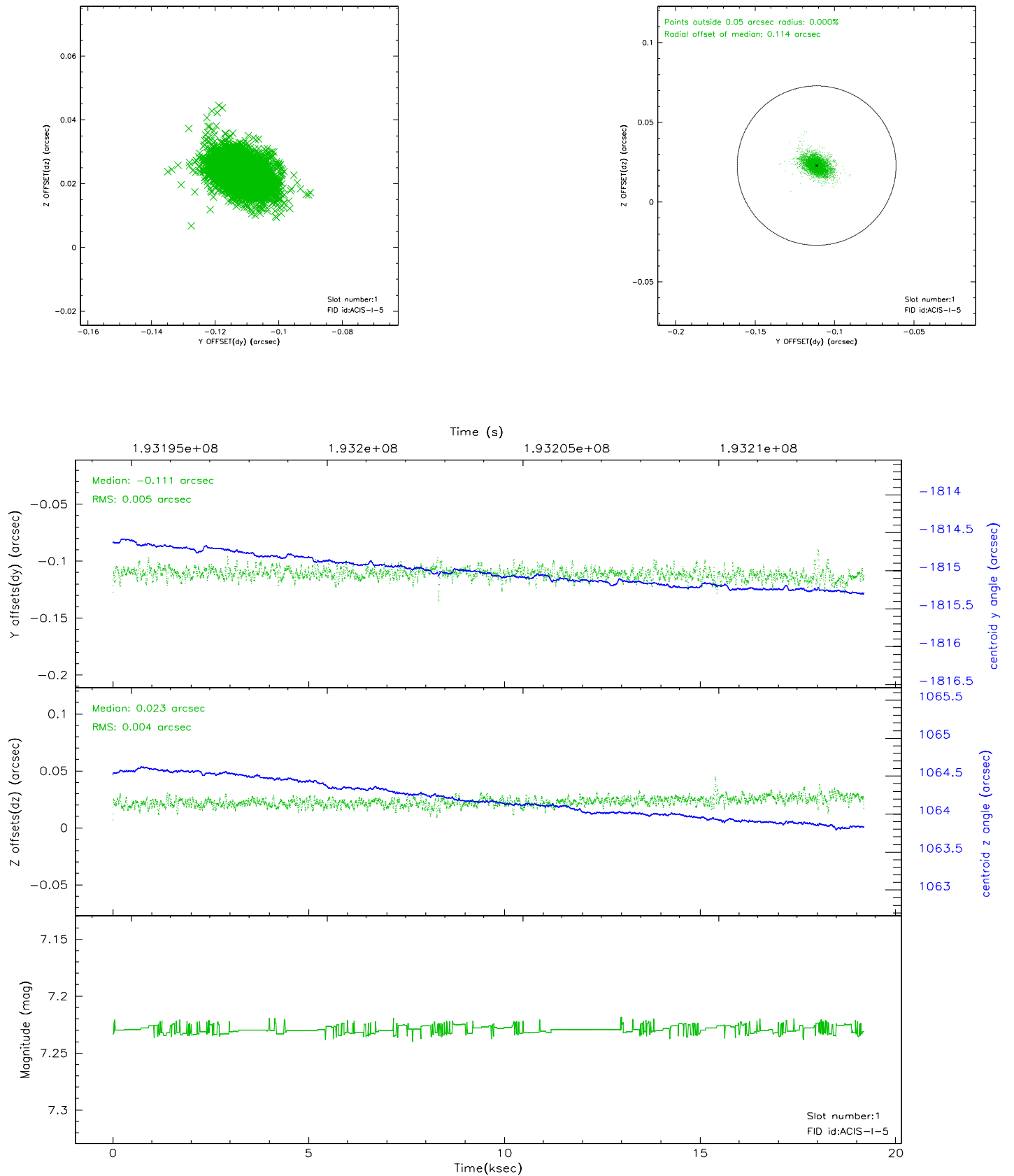


## 2.5 FID Slots

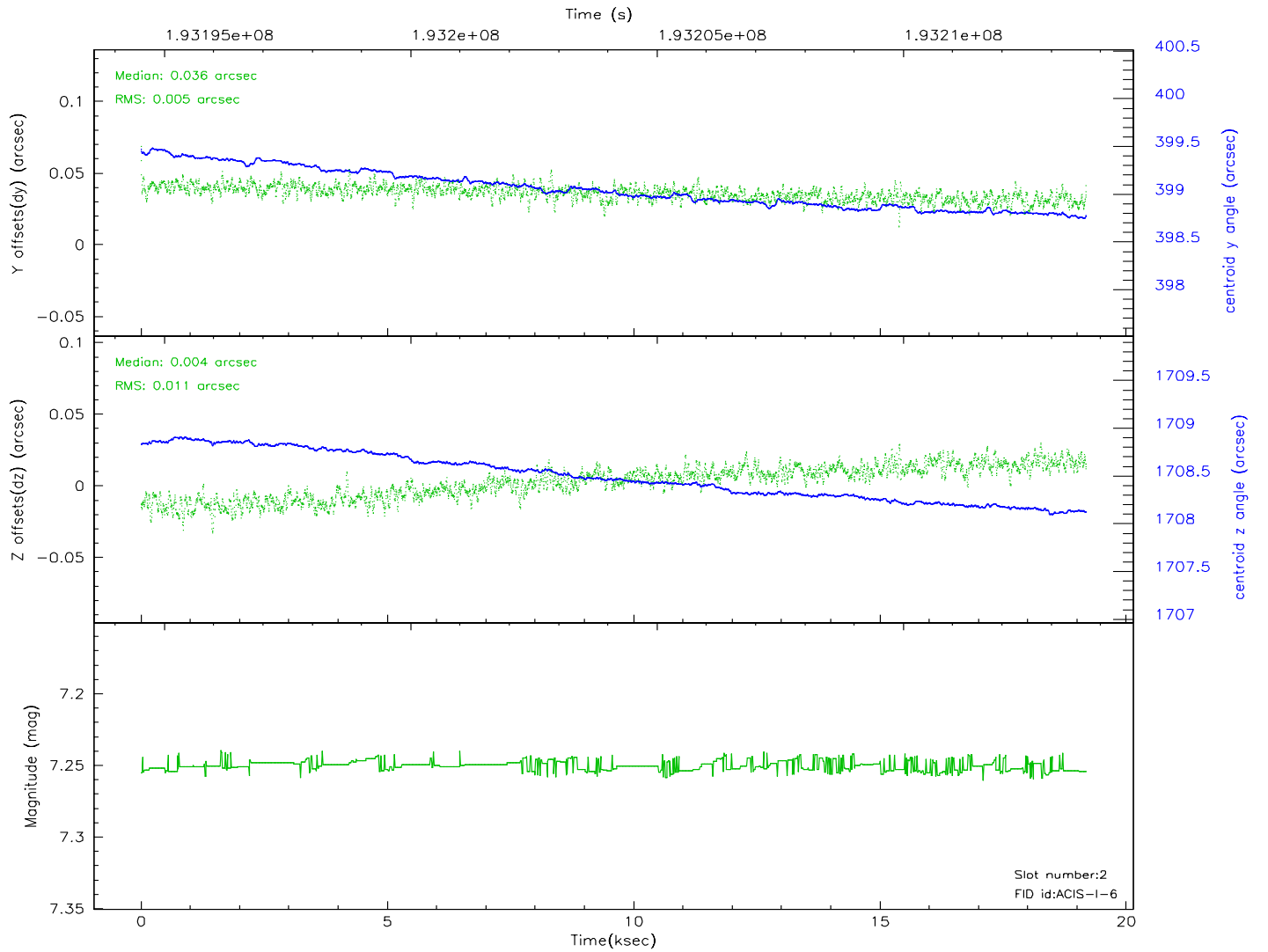
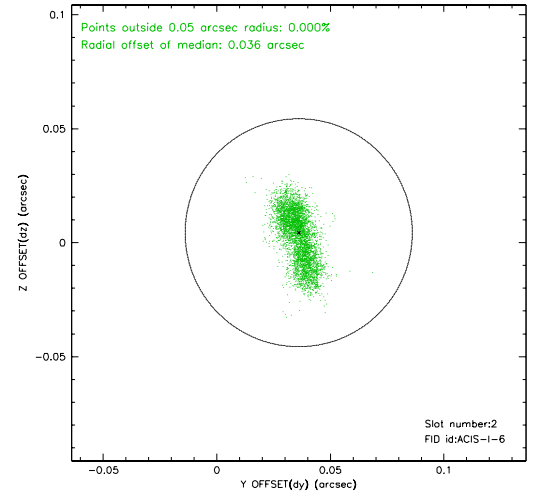
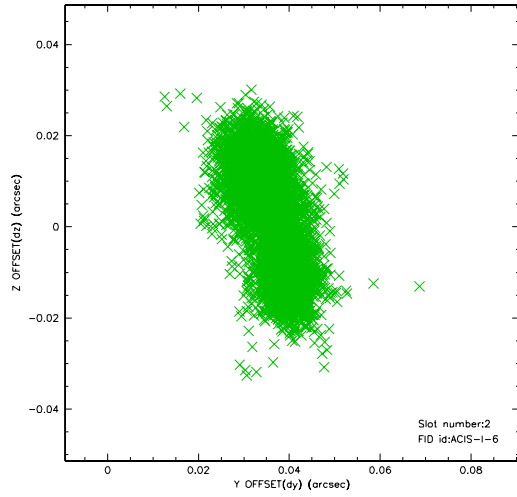
### 2.5.1 Slot 0



## 2.5.2 Slot 1

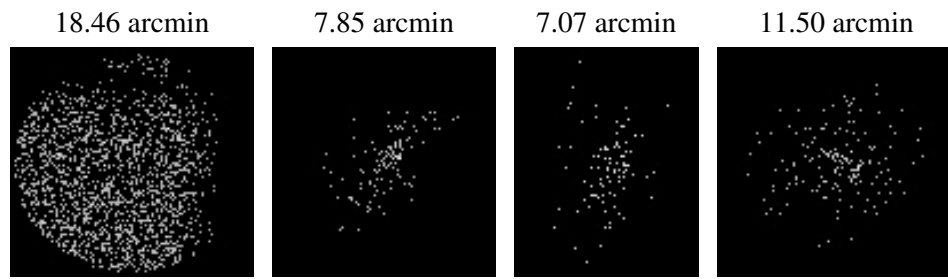


### 2.5.3 Slot 2





### 3 Point Sources



## A Summary

### A.1 Status

V&V Scientist	Jen Lauer
V&V Date (YYYY-MM-DD)	2006.06.02
V&V Edition	1
V&V Disposition and Status	OK
V&V Charge Time	18.755

### A.2 Comments