

V&V Reference Report

L2 ASCDS Version : 7.6.7.1

Observation 4953 - L2 Version 001
Chandra X-Ray Center

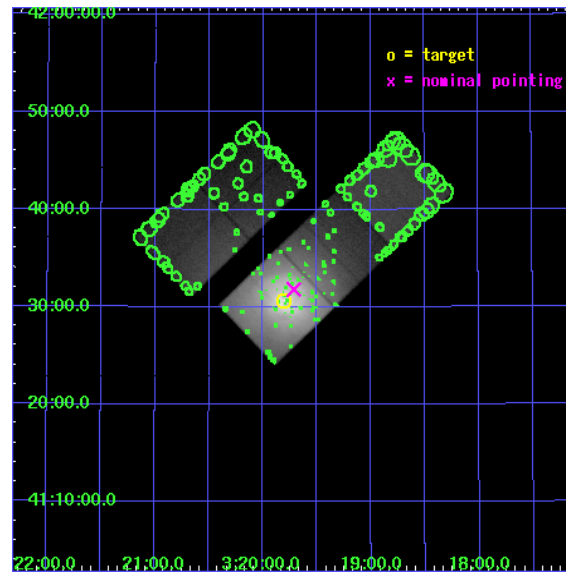
L2 Processing Date : Apr 15 2006

Contents

1	Front	2
2	OBI	3
2.1	OBI	3
2.1.1	Images	3
2.1.2	Bias	3
2.1.3	Parameters	4
2.1.4	Events	4
2.2	Compared Parameters	5
2.3	Aspect	6
2.4	Star Slots	9
2.4.1	Slot 3	9
2.4.2	Slot 4	10
2.4.3	Slot 5	11
2.4.4	Slot 6	12
2.4.5	Slot 7	13
2.5	FID Slots	14
2.5.1	Slot 0	14
2.5.2	Slot 1	15
2.5.3	Slot 2	16
3	Point Sources	17
A	Summary	18
A.1	Status	18
A.2	Comments	18

1 Front

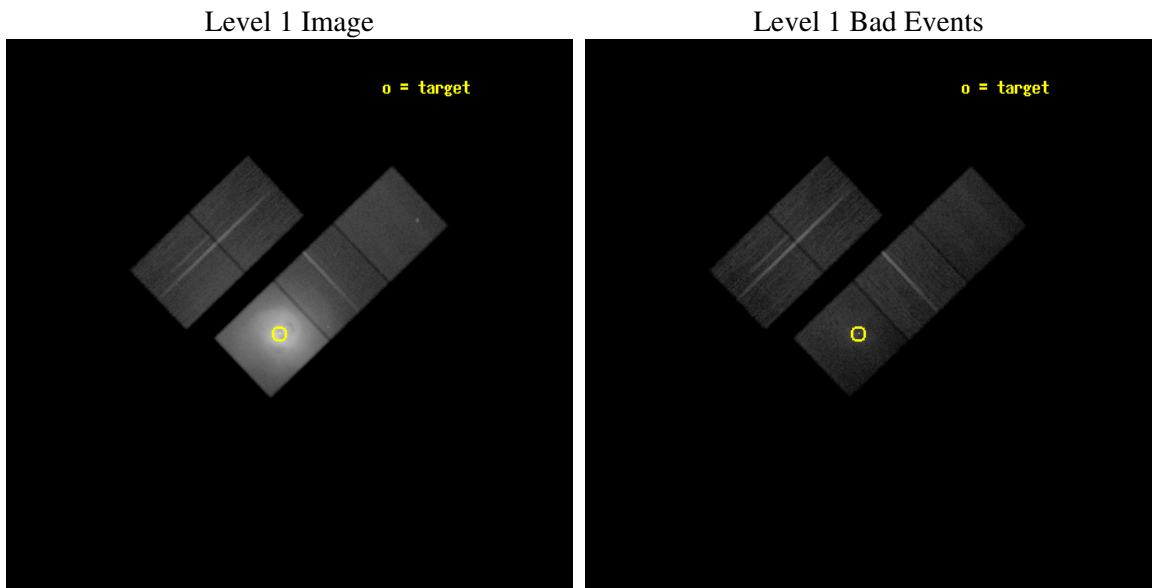
seq_num	800400
obs_id	4953
title	A Megasecond Image of the Core of the Perseus Cluster
observer	Prof Andrew Fabian
object	Abell 426
dtcycle	0
cycle	P
ra_targ	49.950833
dec_targ	41.511722
ra_nom	49.928457359444
dec_nom	41.530147031413
roll_nom	136.24474747785
revision	2
ontime	30476.099941403
livetime	30077.90725949
ontime2	30472.958961159
ontime3	30476.099941403
ontime5	30476.099941403
ontime6	30476.099941403
ontime7	30476.099941403
l2events	2970959



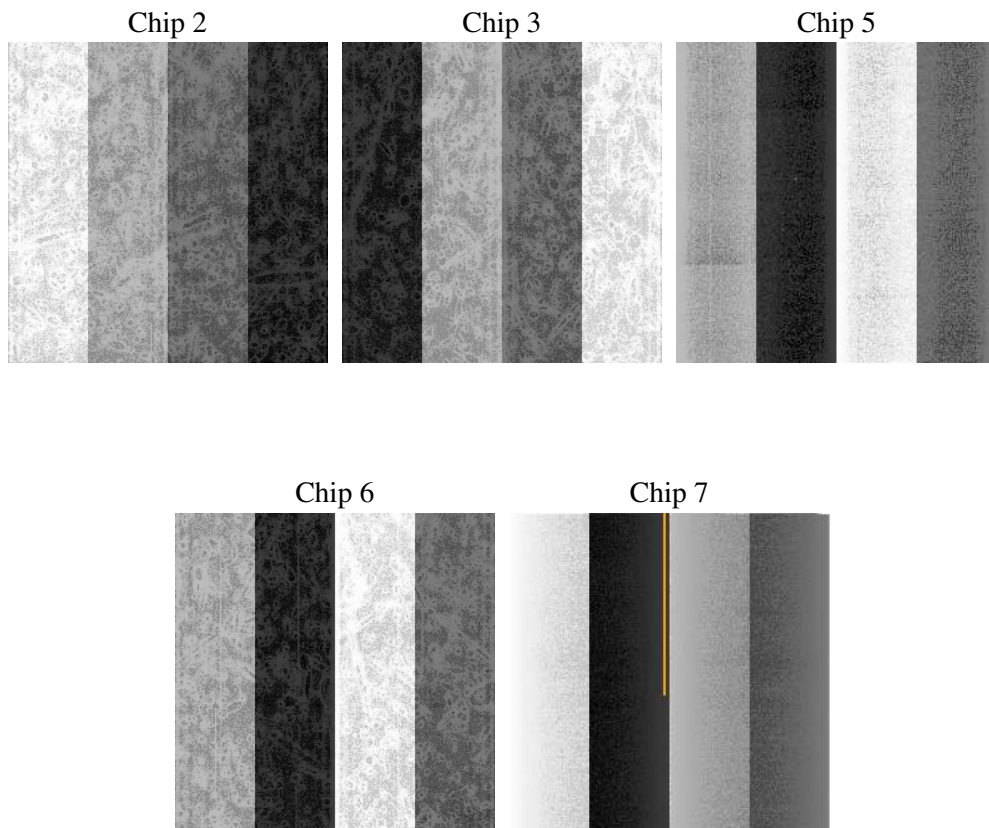
2 OBI

2.1 OBI

2.1.1 Images



2.1.2 Bias



2.1.3 Parameters

obi_num	1
ascdsver	7.6.7.1
caldbver	3.2.1
date	2006-04-15T07:24:22
revision	2

sched_exp_time	30703.276000
ontime	30480.39054355
ontime2	30477.249573231
ontime3	30480.390553474
ontime5	30480.390563488
ontime6	30480.390553474
ontime7	30480.39054355
l1events	3907098

2.1.4 Events

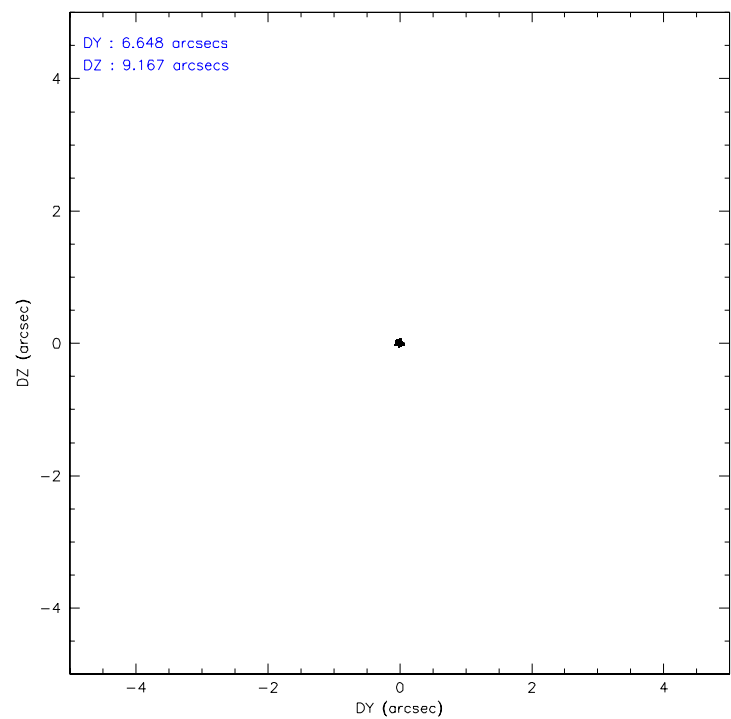
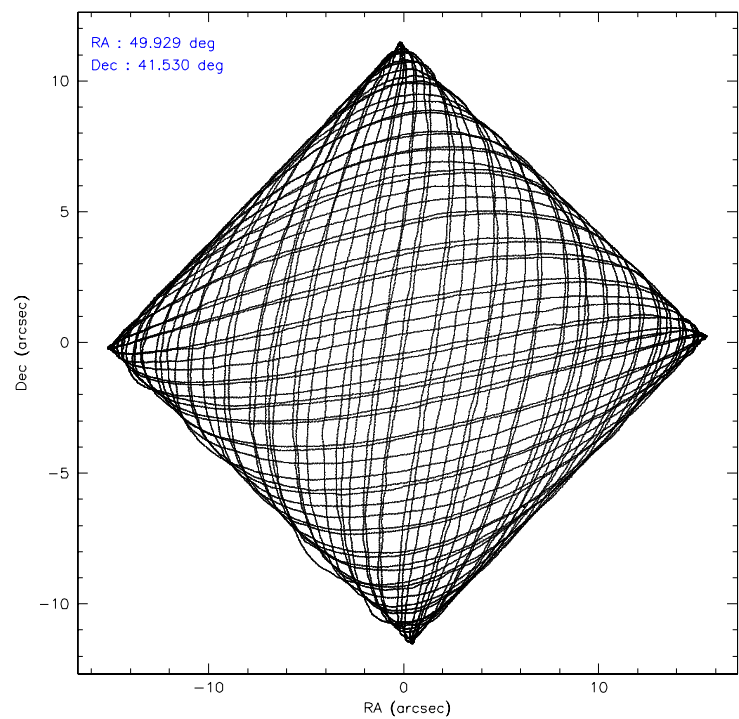
	ccd 2	ccd 3	ccd 5	ccd 6	ccd 7
level 1 events	270934	313122	310321	465123	2547598
rejected events	193657	184257	143690	190398	170963
rejected %	71%	58%	46%	40%	6%

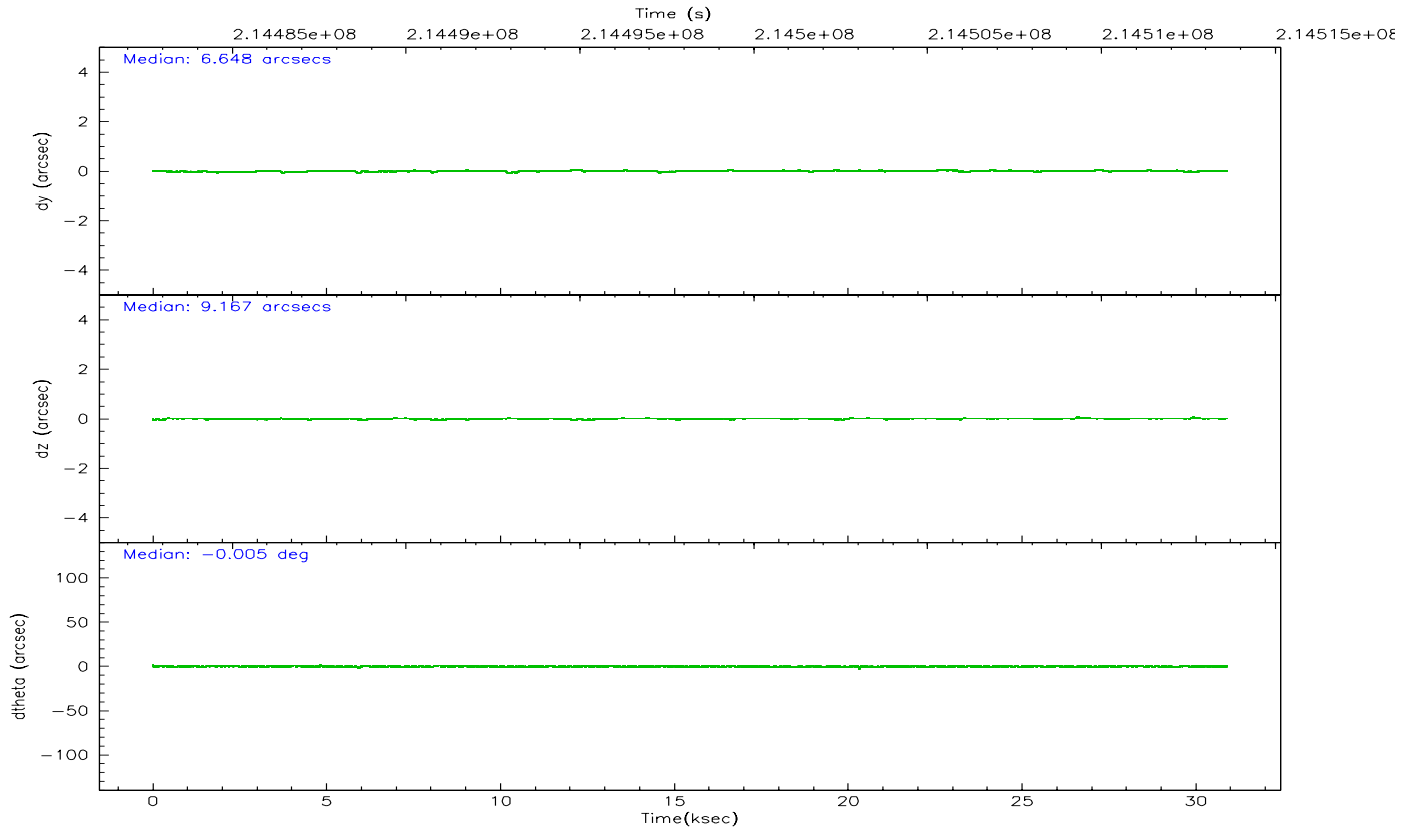
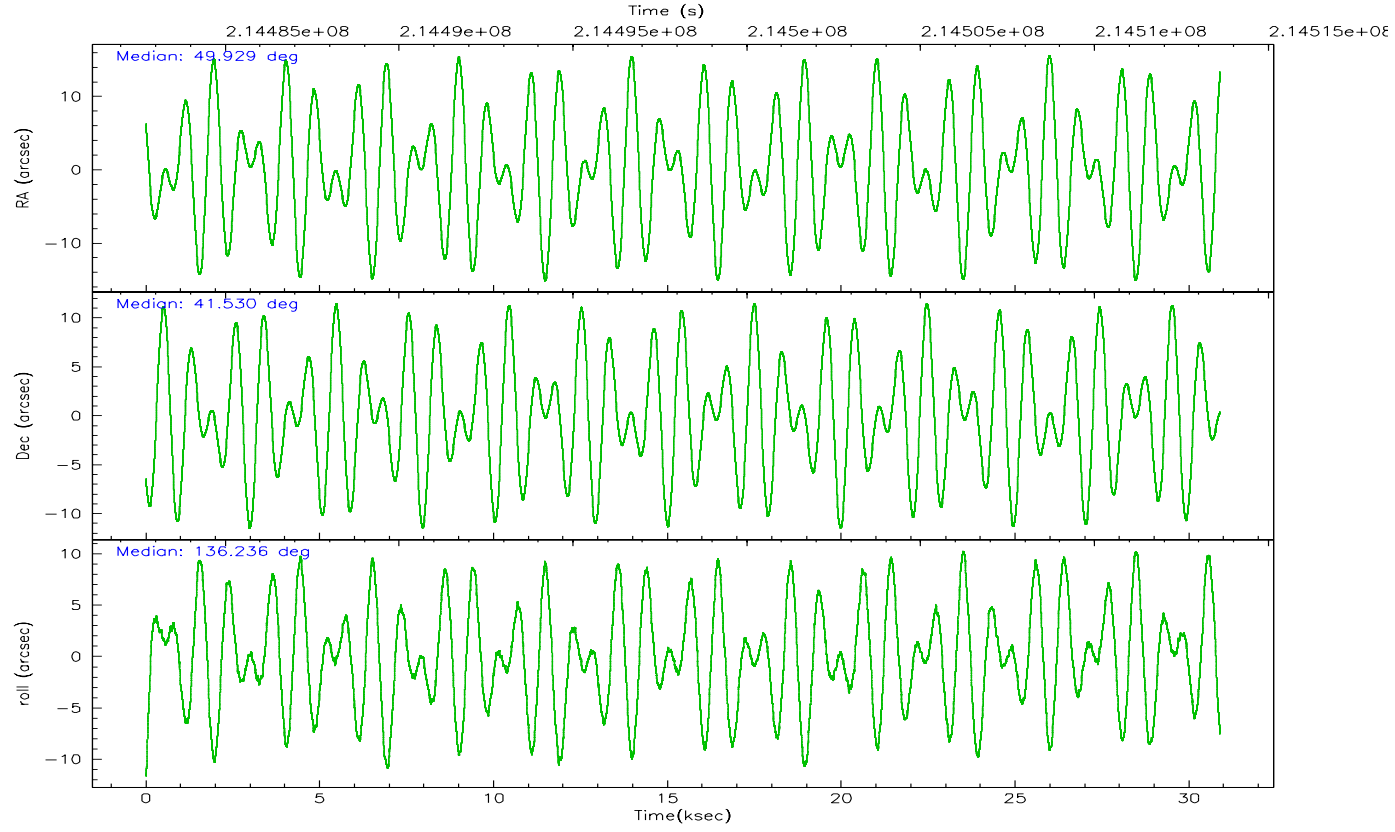
	ccd 2	ccd 3	ccd 5	ccd 6	ccd 7
grade 0 events	54015	95740	15699	211196	591153
	19%	30%	5%	45%	23%
grade 1 events	362	553	111	940	1458
	0%	0%	0%	0%	0%
grade 2 events	10110	15060	56567	31265	684896
	3%	4%	18%	6%	26%
grade 3 events	3967	5809	6199	10227	254431
	1%	1%	1%	2%	9%
grade 4 events	3987	5718	6049	10439	250229
	1%	1%	1%	2%	9%
grade 5 events	6585	8091	14672	8845	34892
	2%	2%	4%	1%	1%
grade 6 events	5209	6551	82138	11632	596167
	1%	2%	26%	2%	23%
grade 7 events	186699	175600	128886	180579	134372
	68%	56%	41%	38%	5%

2.2 Compared Parameters

Parameter	Planned	Actual	Parameter	Planned	Actual
Instrument	ACIS	ACIS	Obspar format version number	6	6
Detector	ACIS-23567	ACIS-23567	Obspar file type	PREDICTED	ACTUAL
Grating	NONE	NONE	Obspar update status	NONE	UPDATED
Data mode	FAINT	FAINT	On-chip summing requested	N	N
Observation mode	POINTING	POINTING	Subarray requested	NONE	NONE
Pointing RA	49.963912	49.92845735944422	Alternating exposures requested	N	N
Pointing Dec	41.524049	41.53014703141278	Primary exposure time	0.000000	3.1
Pointing Roll	136.064614	136.2447474778535			
SIM focus pos (mm)	-0.684267	-0.6828225247311905			
SIM defocus (mm)	0	0.001444936568705701			
SIM translation stage pos (mm)	-190.132523	-190.1425803651734			
SIM translation stage offset (mm)	0	0.01005778216563158			
Observation start time	214482917.184000	214482536.43512			
Observation start date	2004-10-18T10:34:13	2004-10-18T10:28:56			
Observation end time	214513621.184000	214513839.42403			
Observation end date	2004-10-18T19:05:57	2004-10-18T19:10:39			
Read mode	TIMED	TIMED			

2.3 Aspect



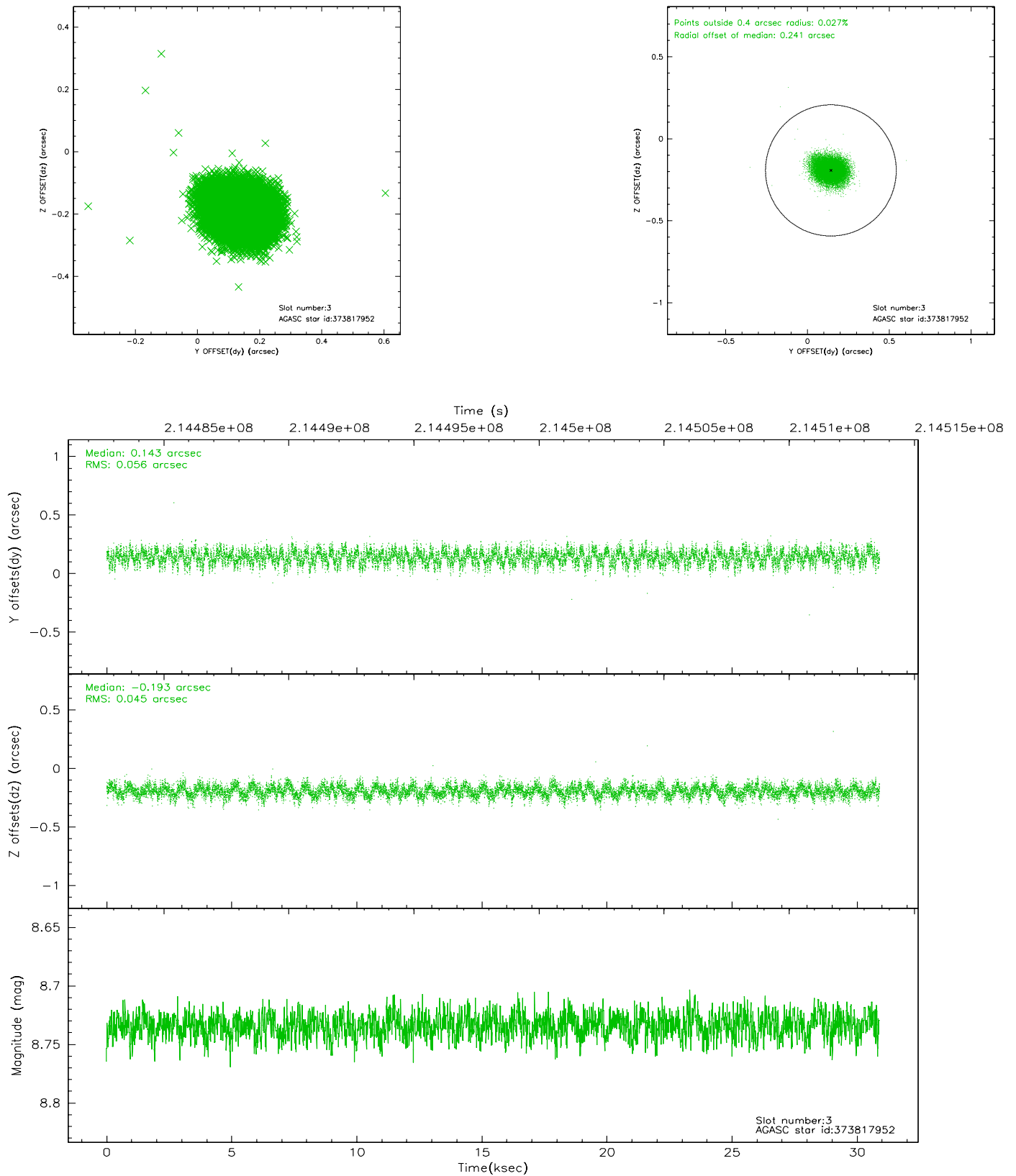


Slot Statistics

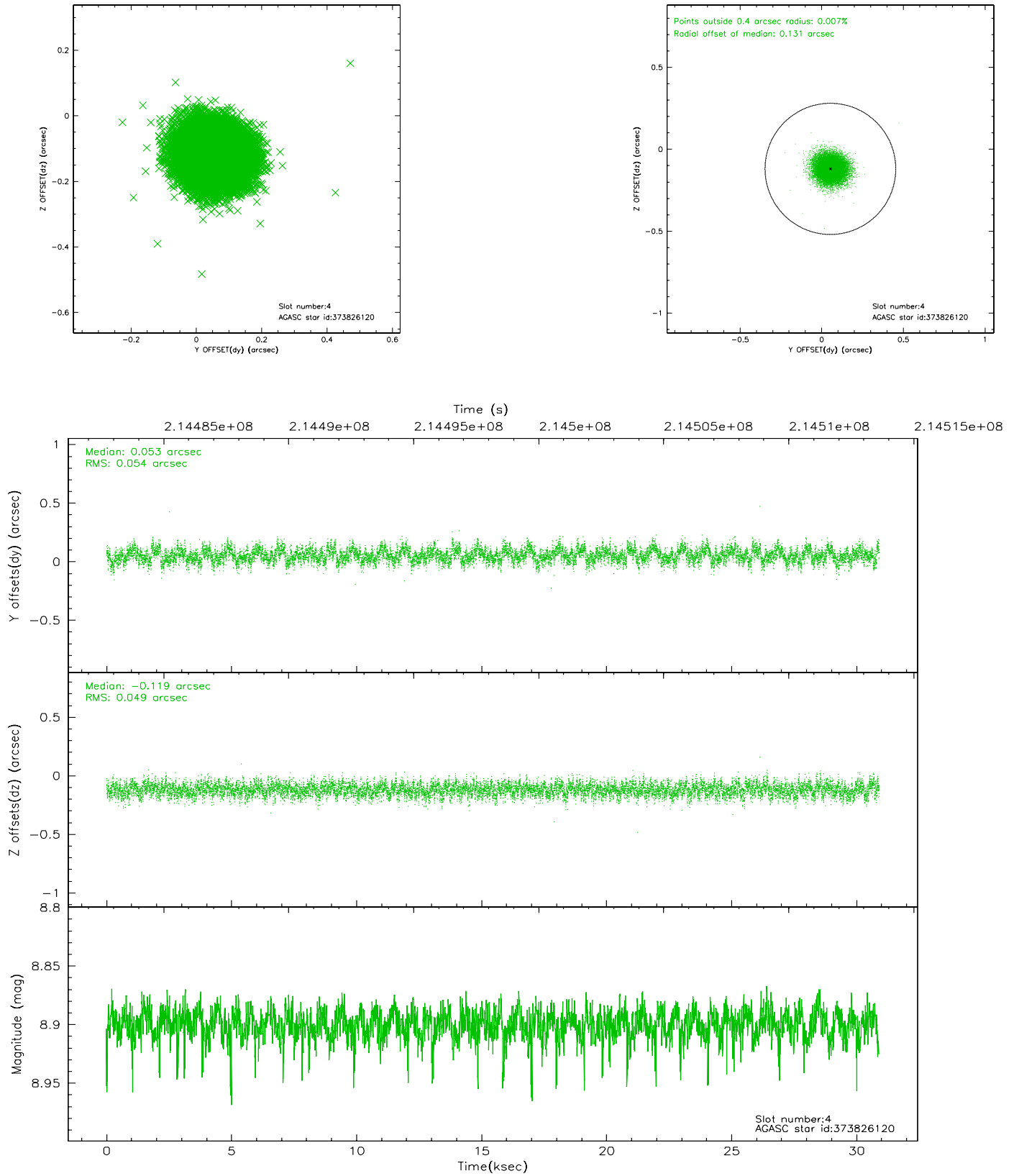
slot	status	id	mag	n_pts	med_dy	med_dz	dr1	dr2	ra	dec	mean_y	mean_z
0	FID	ACIS-S-1	7.19	7533	0.011	0.022	0.006	0.010	0.000000	0.000000	936.64	-1725.95
1	FID	ACIS-S-5	7.24	7535	-0.033	0.022	0.006	0.010	0.000000	0.000000	-1812.34	171.56
2	FID	ACIS-S-6	7.35	7534	0.001	-0.031	0.007	0.011	0.000000	0.000000	402.14	815.52
3	GUIDE	373817952	8.73	15069	0.143	-0.193	0.076	0.122	49.913424	40.978510	-1263.79	1509.26
4	GUIDE	373826120	8.90	15065	0.053	-0.119	0.077	0.123	49.738165	41.186341	-402.57	1299.35
5	GUIDE	374352808	8.77	15069	-0.063	0.110	0.070	0.113	49.969955	42.208621	1698.74	-1785.32
6	GUIDE	374357808	8.67	15066	-0.153	0.090	0.080	0.132	49.921429	42.176083	1710.70	-1611.42
7	GUIDE	376057824	8.35	15065	0.021	0.117	0.089	0.134	50.665569	41.926280	-342.84	-2352.08

2.4 Star Slots

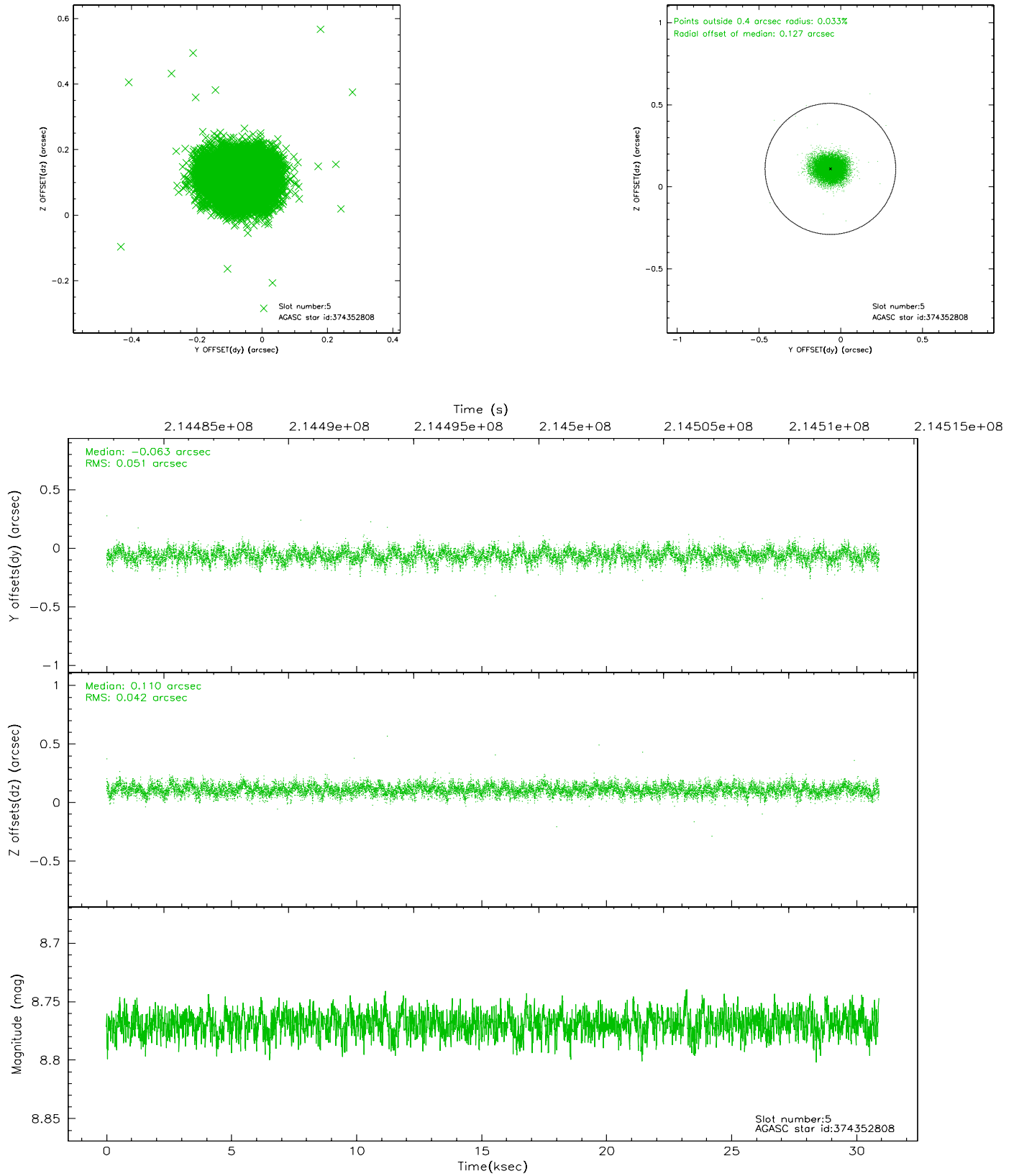
2.4.1 Slot 3



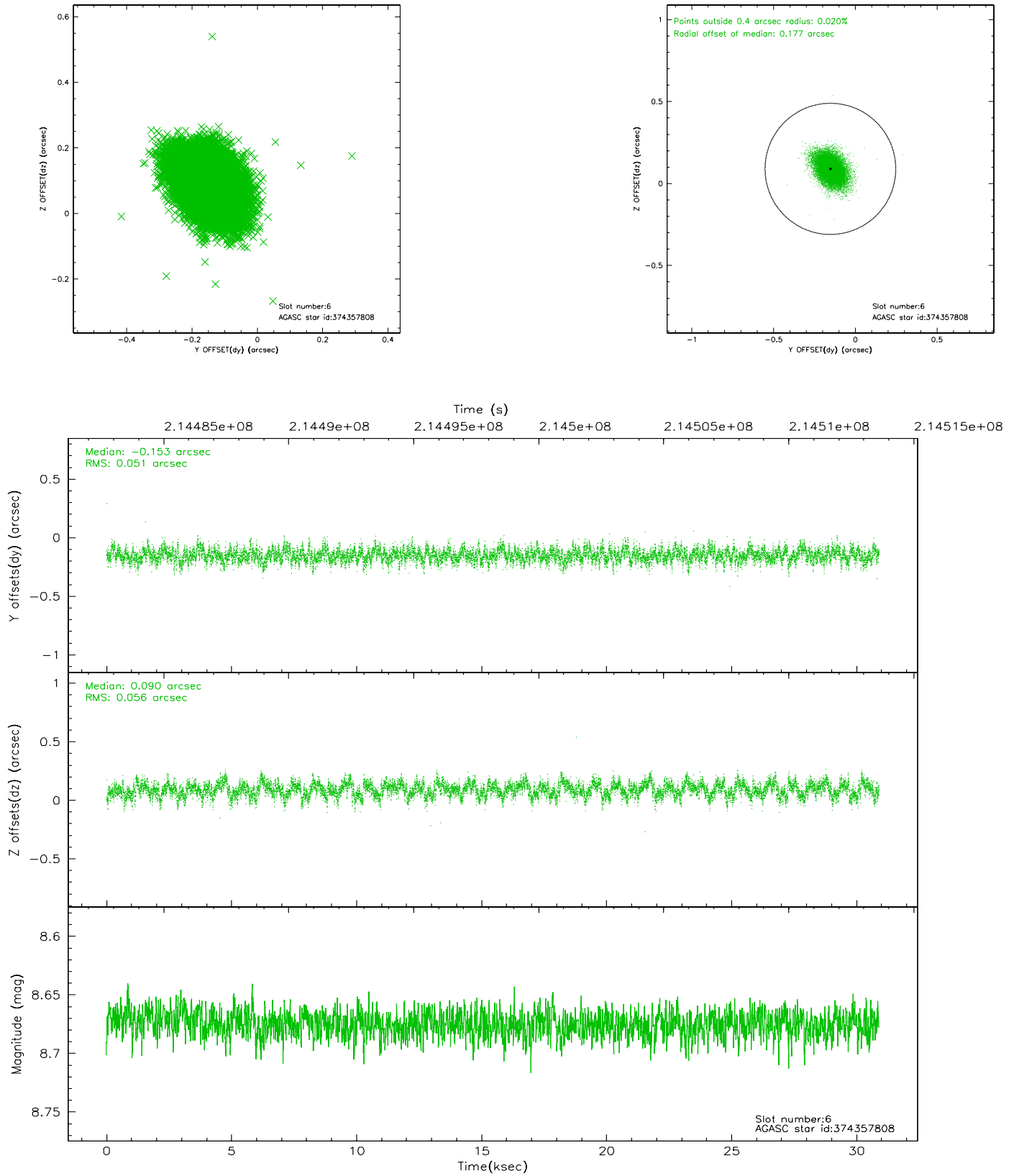
2.4.2 Slot 4



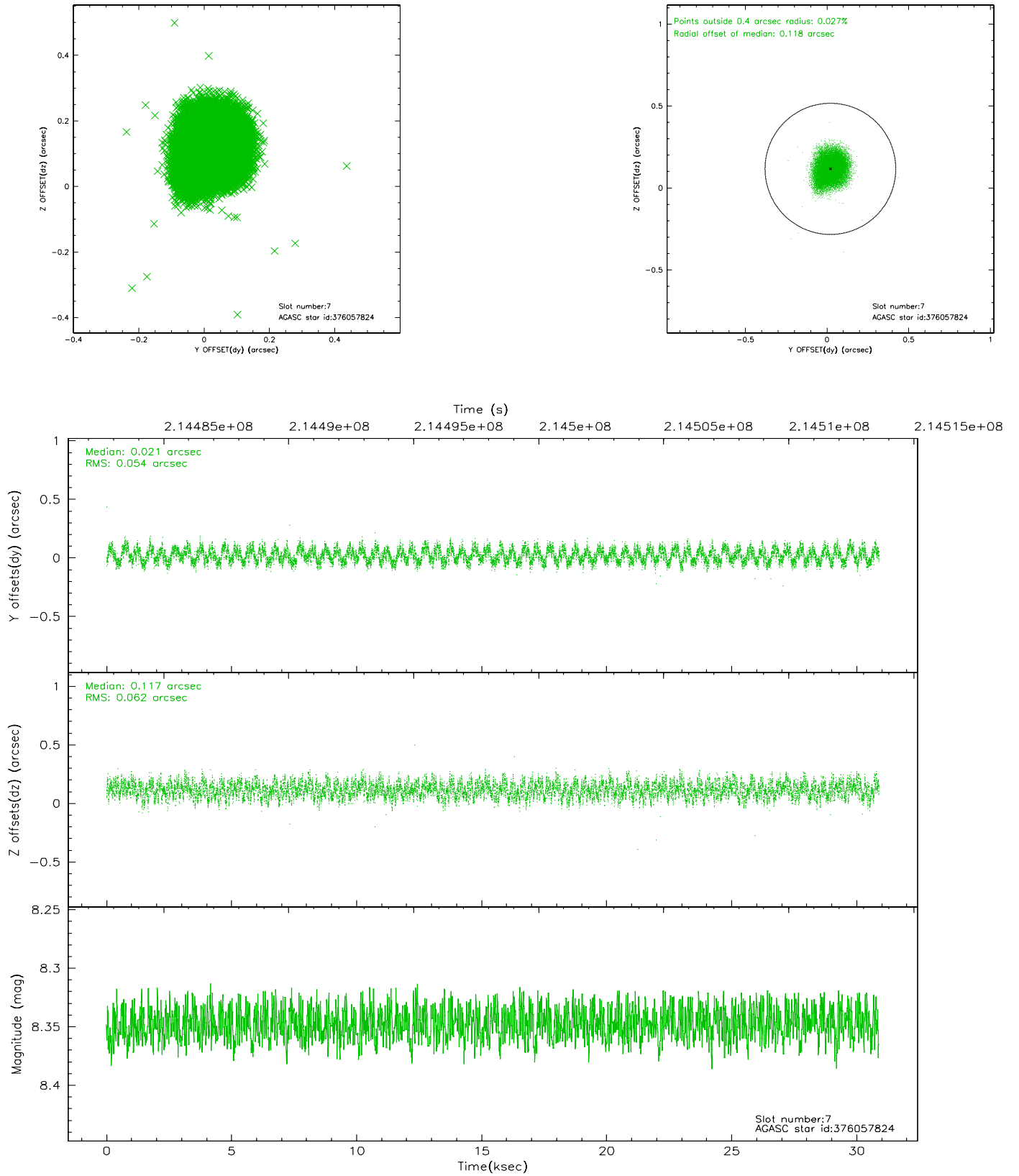
2.4.3 Slot 5



2.4.4 Slot 6

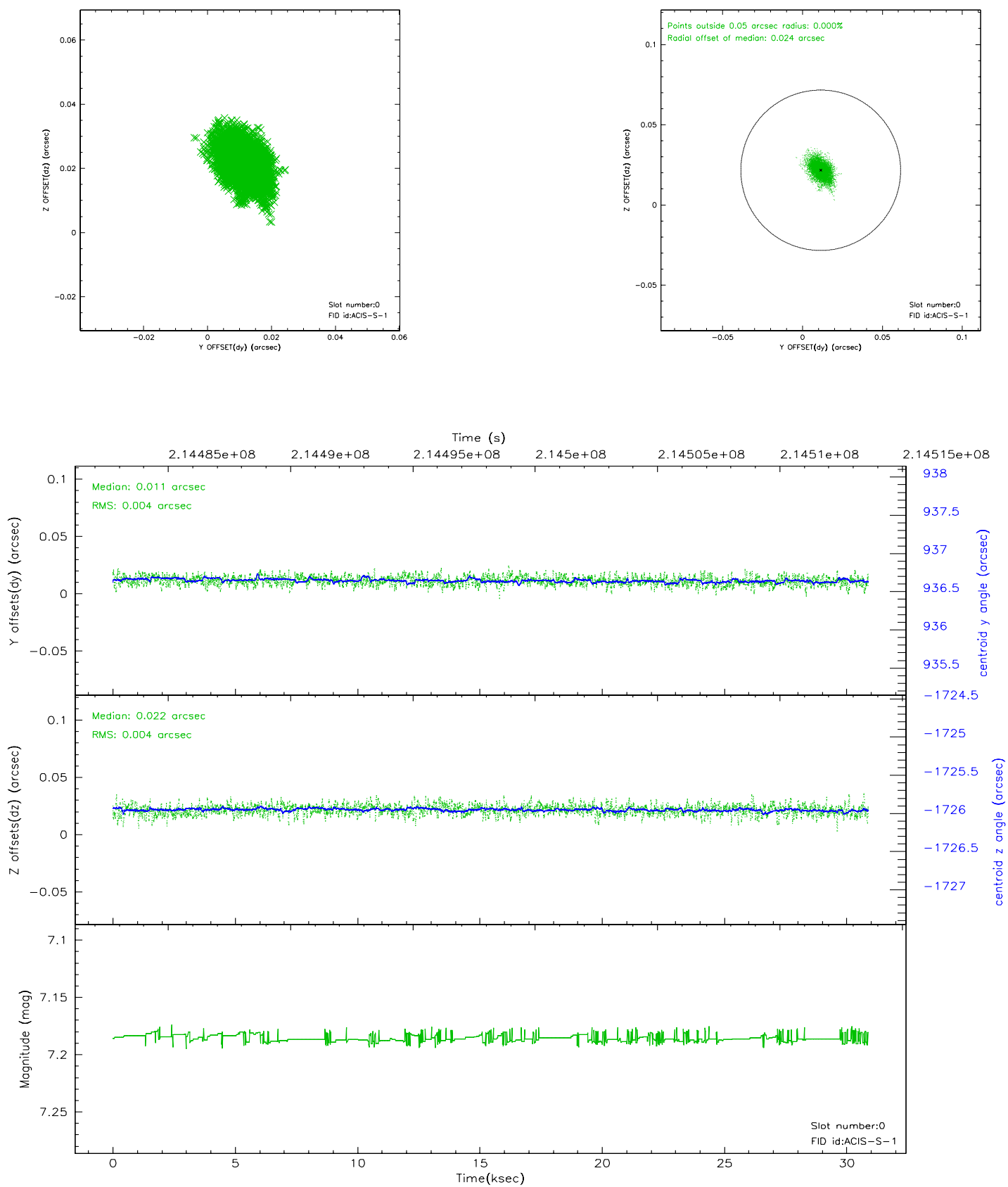


2.4.5 Slot 7

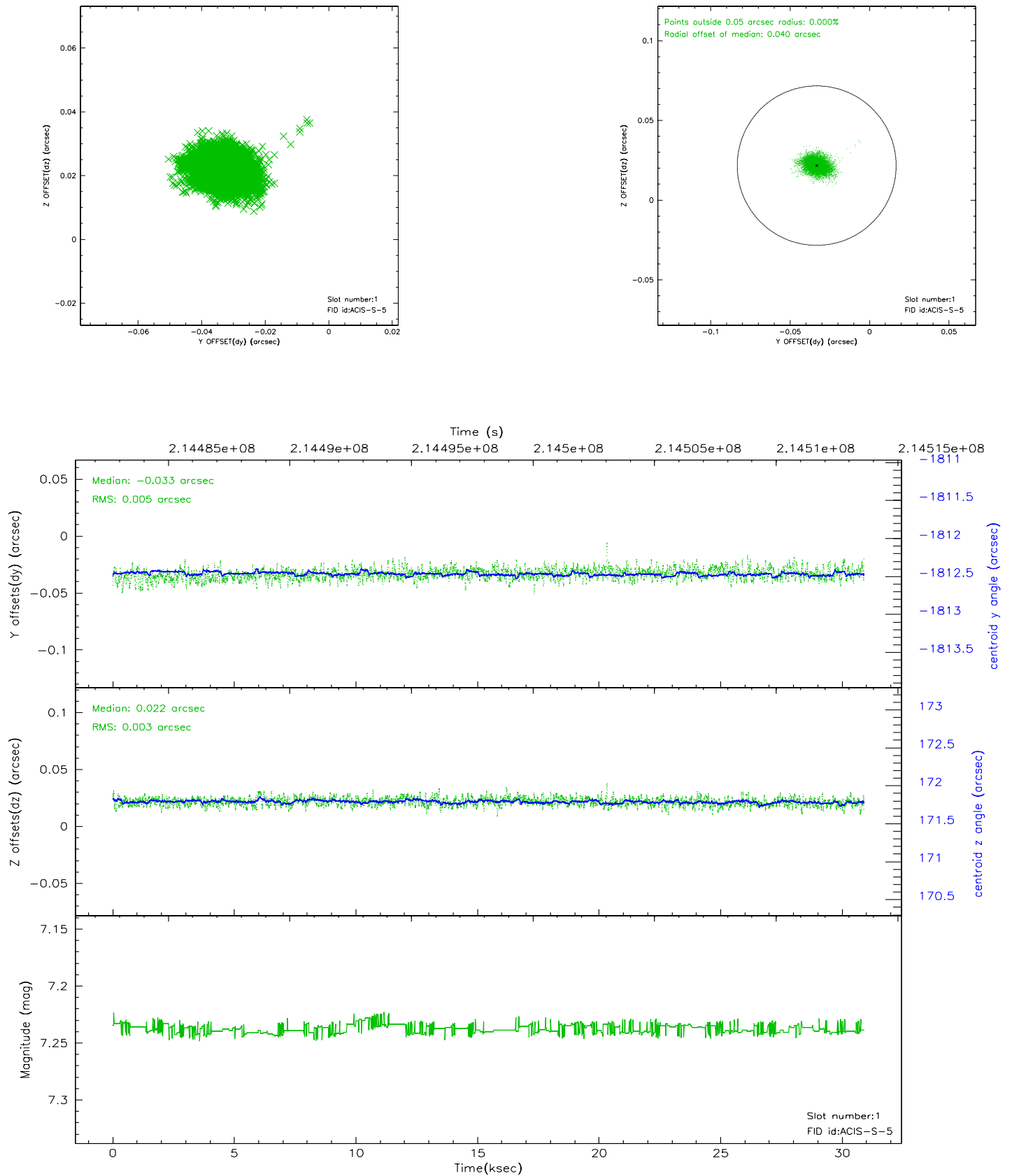


2.5 FID Slots

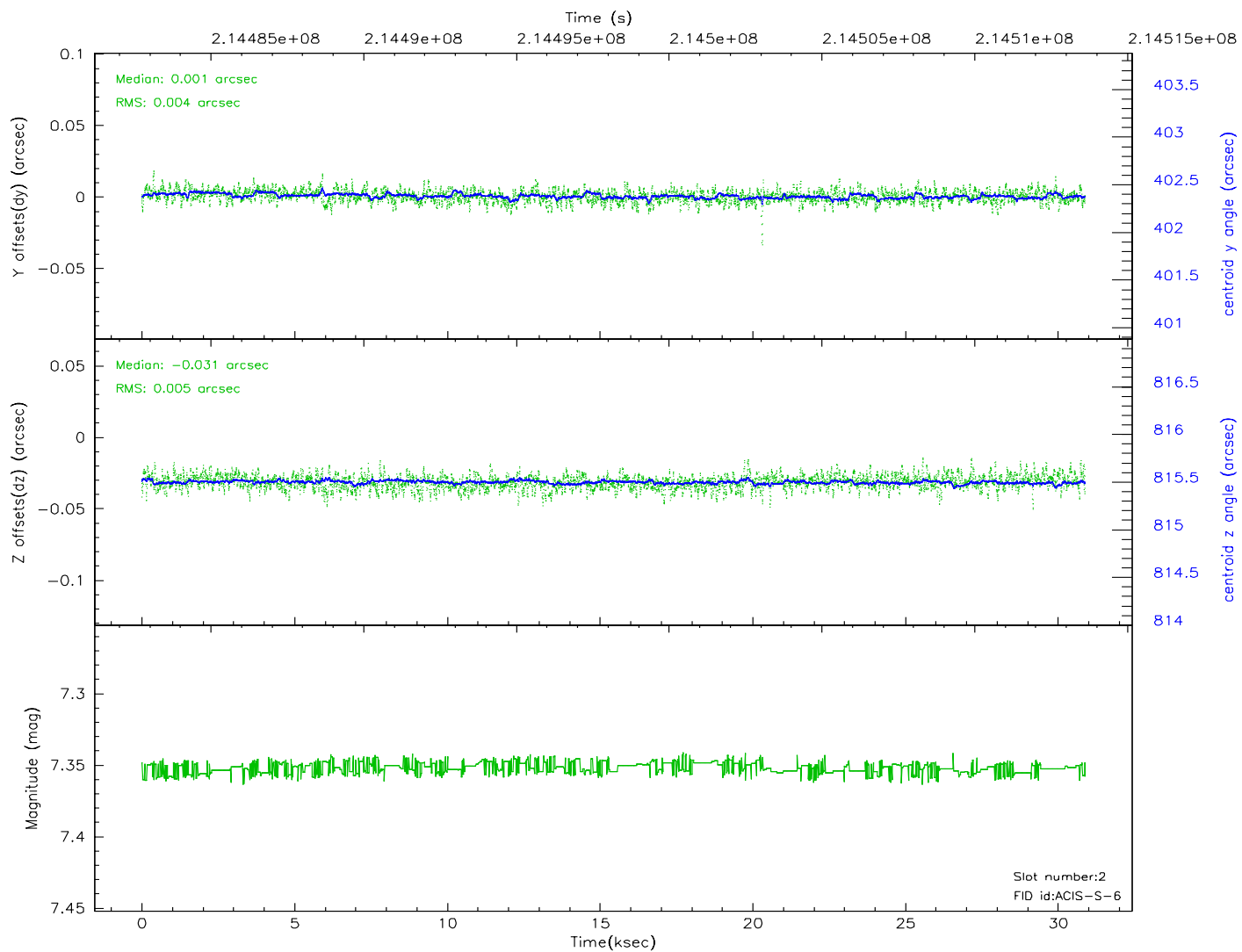
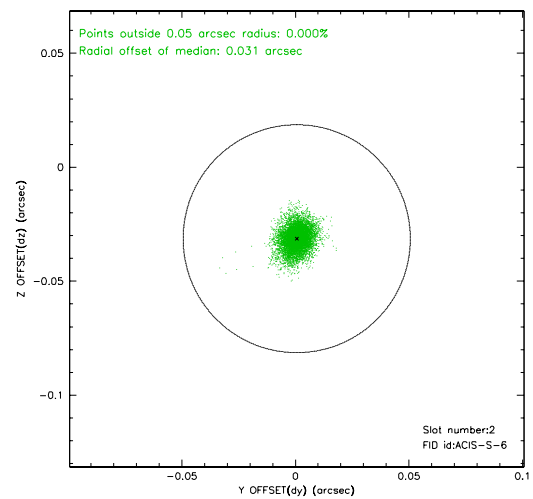
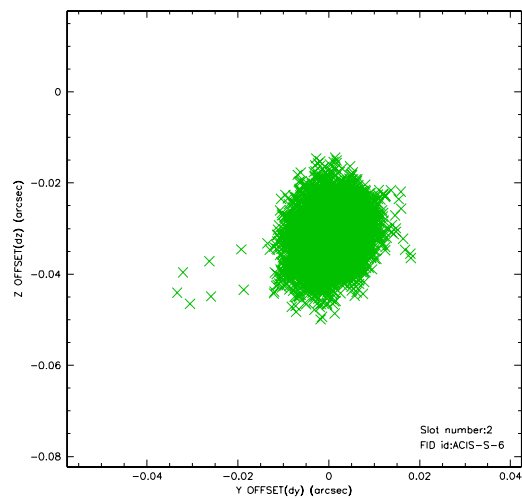
2.5.1 Slot 0



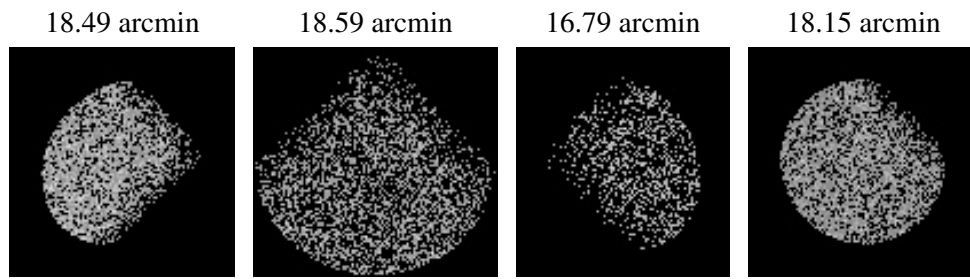
2.5.2 Slot 1



2.5.3 Slot 2



3 Point Sources



A Summary

A.1 Status

V&V Scientist	Beth Sundheim
V&V Date (YYYY-MM-DD)	2006.04.16
V&V Edition	1
V&V Disposition and Status	OK
V&V Charge Time	30.476

A.2 Comments