

V&V Reference Report

L2 ASCDS Version : 7.6.7.2

Observation 4933 - L2 Version 001
Chandra X-Ray Center

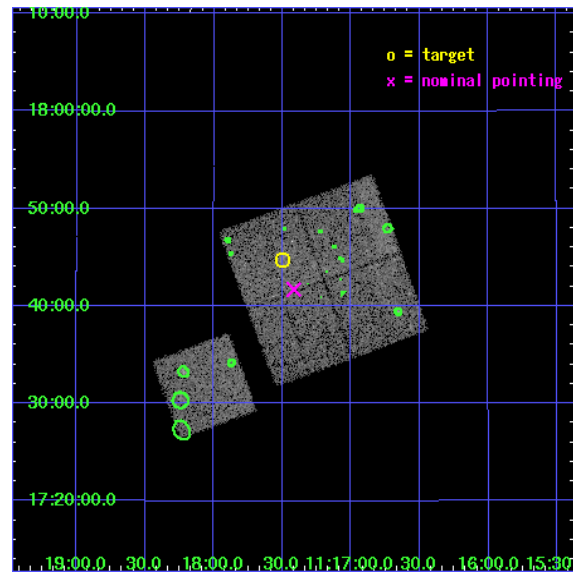
L2 Processing Date : May 23 2006

Contents

1	Front	2
2	OBI	3
2.1	OBI	3
2.1.1	Images	3
2.1.2	Bias	3
2.1.3	Parameters	4
2.1.4	Events	4
2.2	Compared Parameters	5
2.3	Aspect	6
2.4	Star Slots	9
2.4.1	Slot 3	9
2.4.2	Slot 4	10
2.4.3	Slot 5	11
2.4.4	Slot 6	12
2.4.5	Slot 7	13
2.5	FID Slots	14
2.5.1	Slot 0	14
2.5.2	Slot 1	15
2.5.3	Slot 2	16
3	Point Sources	17
A	Summary	18
A.1	Status	18
A.2	Comments	18

1 Front

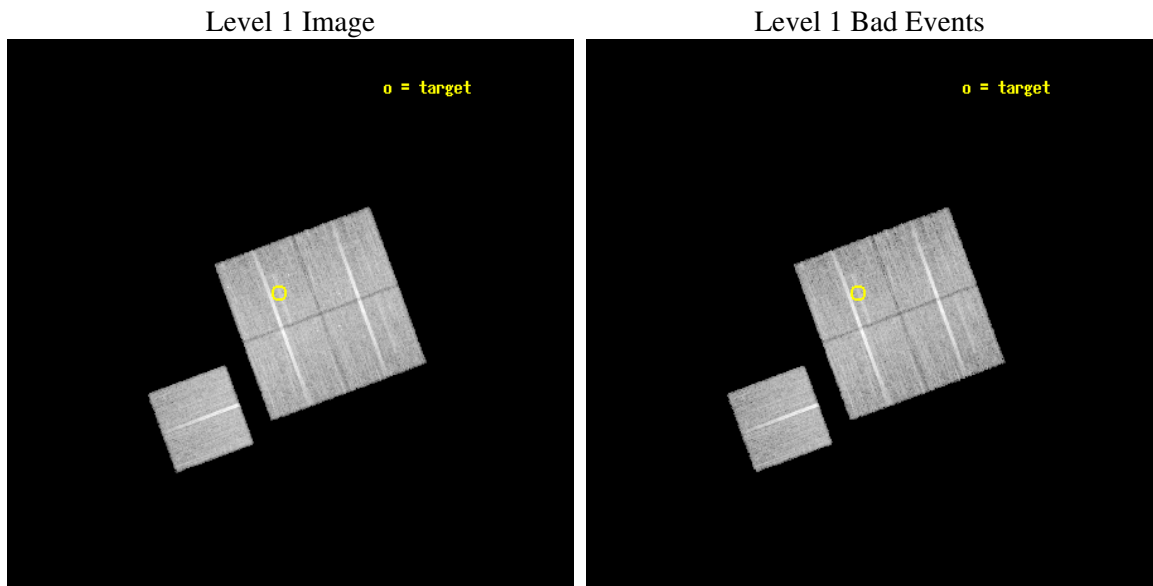
seq_num	800384
obs_id	4933
title	Chandra snapshot survey of 10 distant clusters of galaxies
observer	Dr. Stephen Murray
object	CL1117+1745
dtcycle	0
cycle	P
ra_targ	169.375833
dec_targ	17.745556
ra_nom	169.35416868546
dec_nom	17.695356527486
roll_nom	249.76108995308
revision	2
ontime	19052.599963367
livetime	18803.663718526
ontime0	19046.318022907
ontime1	19052.599963367
ontime2	19052.599963367
ontime3	19052.599963367
ontime6	19052.599963367
l2events	49752



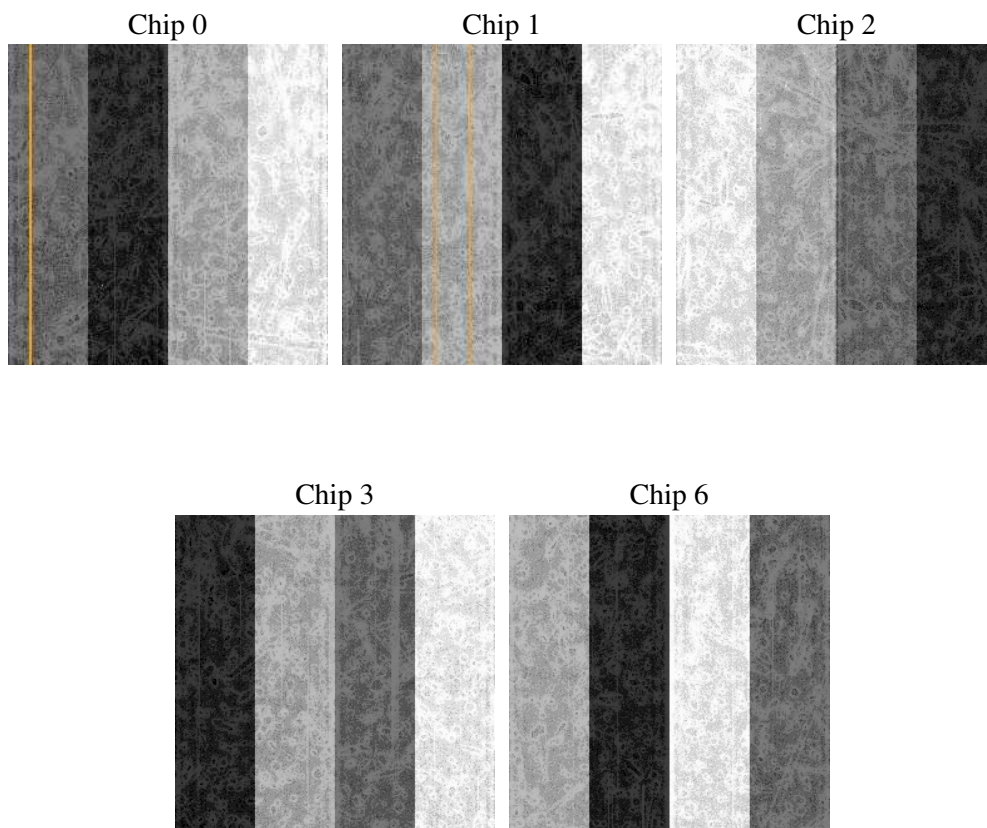
2 OBI

2.1 OBI

2.1.1 Images



2.1.2 Bias



2.1.3 Parameters

obi_num	0
ascdsver	7.6.7.2
caldsver	3.2.2
date	2006-05-23T12:25:35
revision	2

sched_exp_time	19000.000000
ontime	19056.463983923
ontime0	19050.182043463
ontime1	19056.463983923
ontime2	19056.463983923
ontime3	19056.463983923
ontime6	19056.463983923
l1events	590809

2.1.4 Events

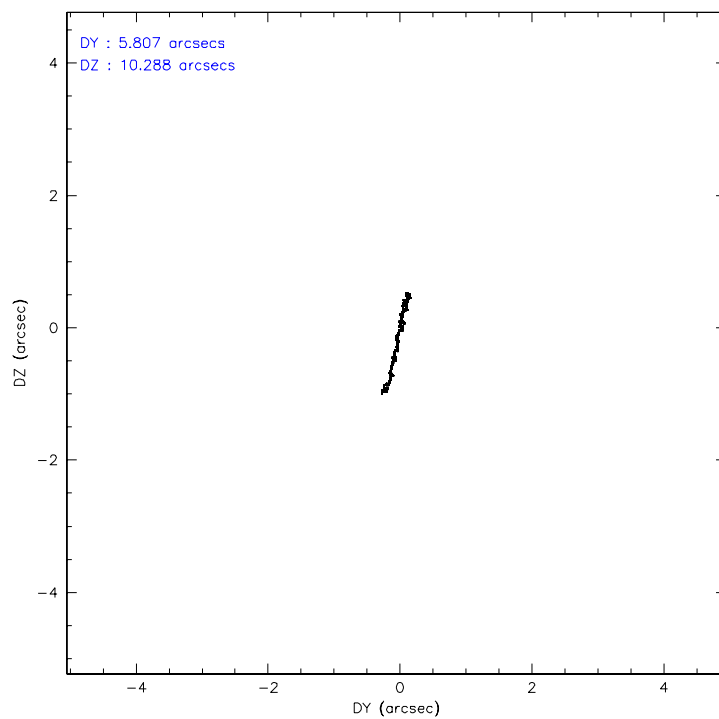
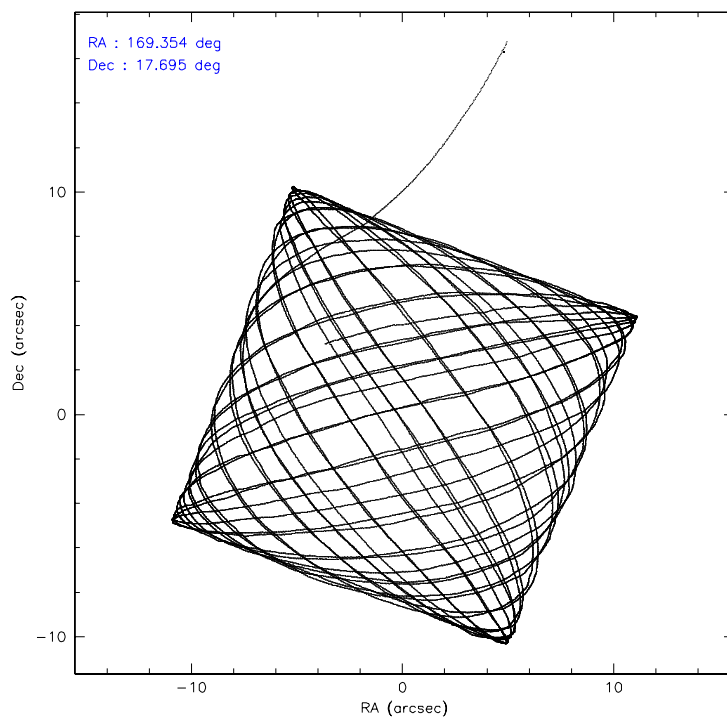
	ccd 0	ccd 1	ccd 2	ccd 3	ccd 6
level 1 events	113172	114497	125354	117377	120409
rejected events	101305	101205	113958	105866	108298
rejected %	89%	88%	90%	90%	89%

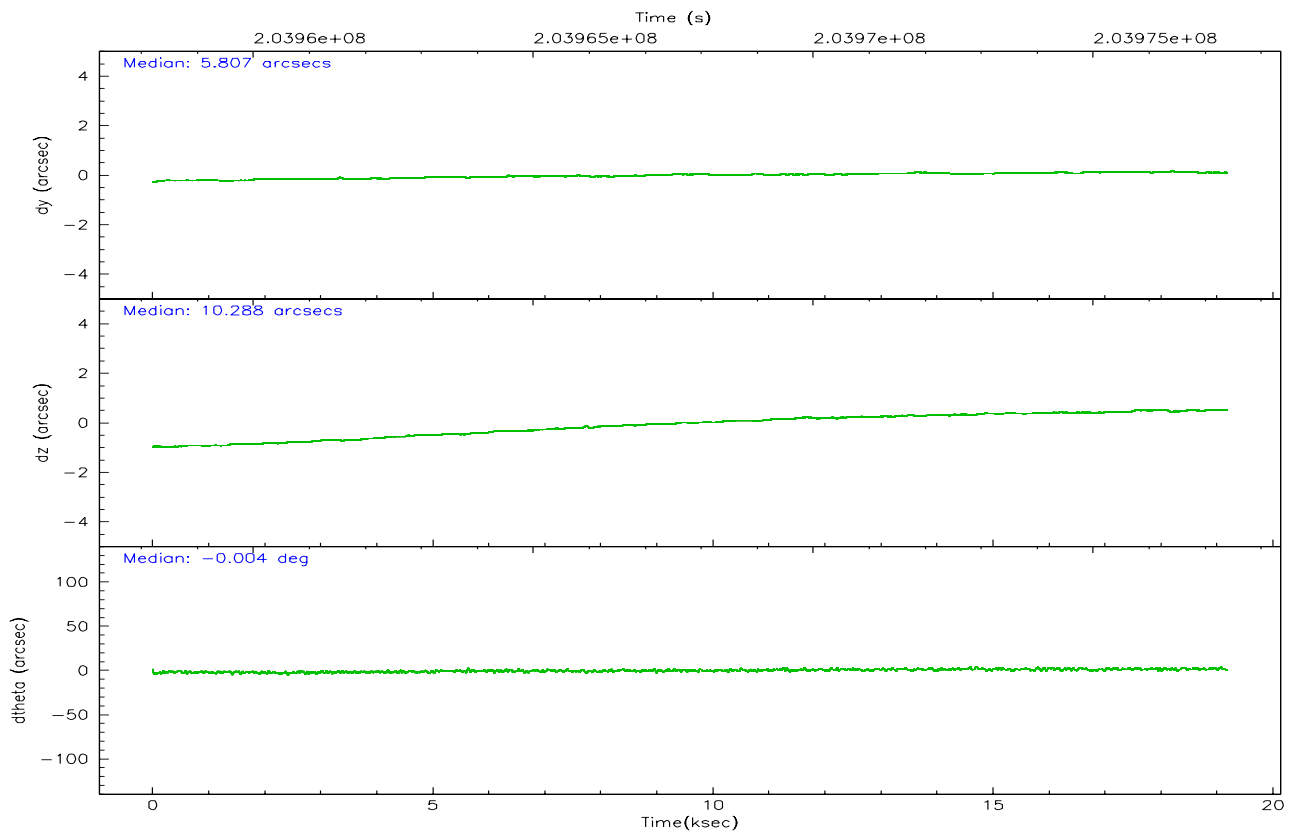
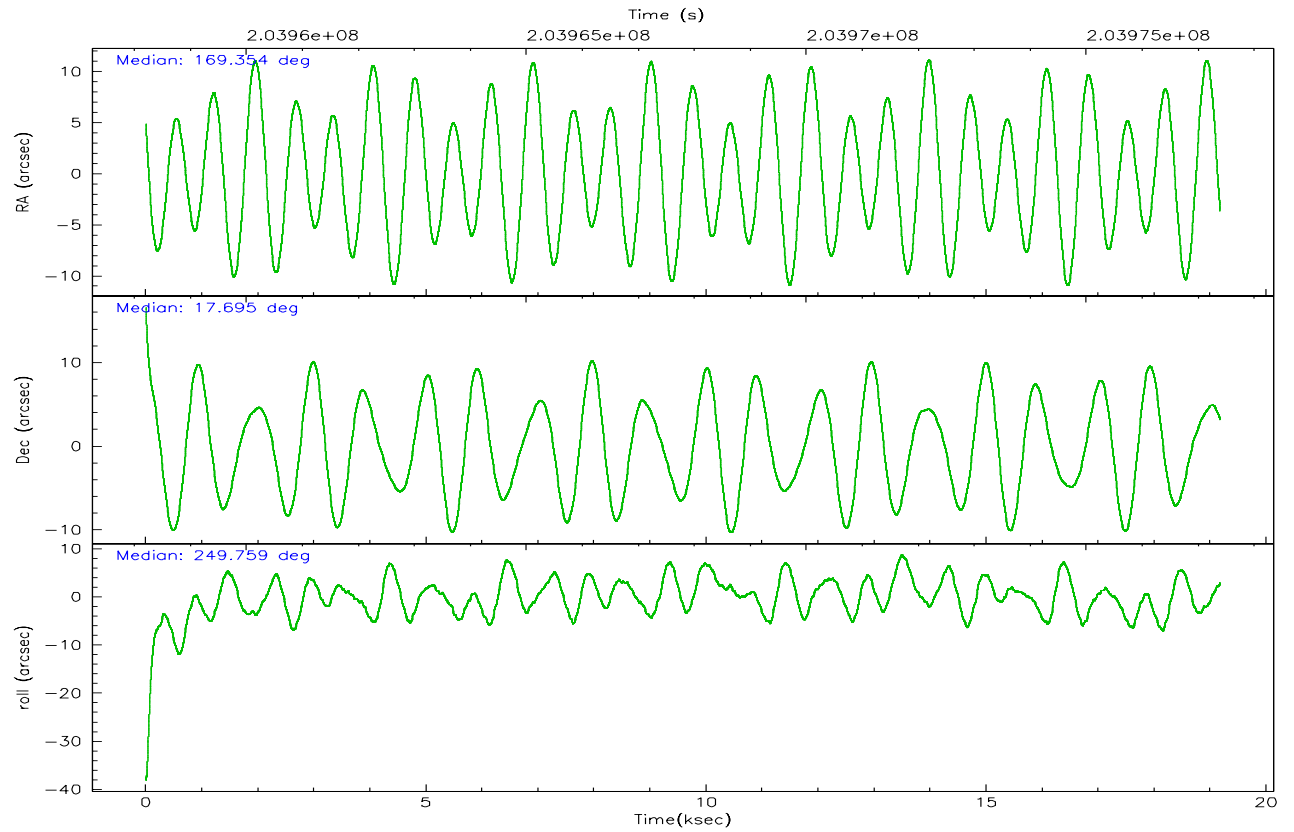
	ccd 0	ccd 1	ccd 2	ccd 3	ccd 6
grade 0 events	4029	4887	3986	4453	4212
	3%	4%	3%	3%	3%
grade 1 events	51	66	71	60	45
	0%	0%	0%	0%	0%
grade 2 events	2854	2818	2744	2377	2623
	2%	2%	2%	2%	2%
grade 3 events	1427	1483	1300	1300	1374
	1%	1%	1%	1%	1%
grade 4 events	1323	1440	1308	1261	1376
	1%	1%	1%	1%	1%
grade 5 events	4129	4371	3854	4682	4591
	3%	3%	3%	3%	3%
grade 6 events	2236	2668	2059	2120	2531
	1%	2%	1%	1%	2%
grade 7 events	97123	96764	110032	101124	103657
	85%	84%	87%	86%	86%

2.2 Compared Parameters

Parameter	Planned	Actual	Parameter	Planned	Actual
Instrument	ACIS	ACIS	Obspar format version number	6	6
Detector	ACIS-01236	ACIS-01236	Obspar file type	PREDICTED	ACTUAL
Grating	NONE	NONE	Obspar update status	NONE	UPDATED
Data mode	VFAINT	VFAINT	On-chip summing requested	N	N
Observation mode	POINTING	POINTING	Subarray requested	NONE	NONE
Pointing RA	169.349173	169.3541686854571	Alternating exposures requested	N	N
Pointing Dec	17.722299	17.69535652748599	Primary exposure time	0.000000	3.1
Pointing Roll	249.553946	249.7610899530833			
SIM focus pos (mm)	-0.782348	-0.7809083437167272			
SIM defocus (mm)	0	0.001439871863259334			
SIM translation stage pos (mm)	-225.840463	-225.8433433320239			
SIM translation stage offset (mm)	-7.752	-7.749109670905796			
Observation start time	203958389.184000	203957452.10406			
Observation start date	2004-06-18T15:05:25	2004-06-18T14:50:52			
Observation end time	203977389.184000	203978171.96748			
Observation end date	2004-06-18T20:22:05	2004-06-18T20:36:11			
Read mode	TIMED	TIMED			

2.3 Aspect



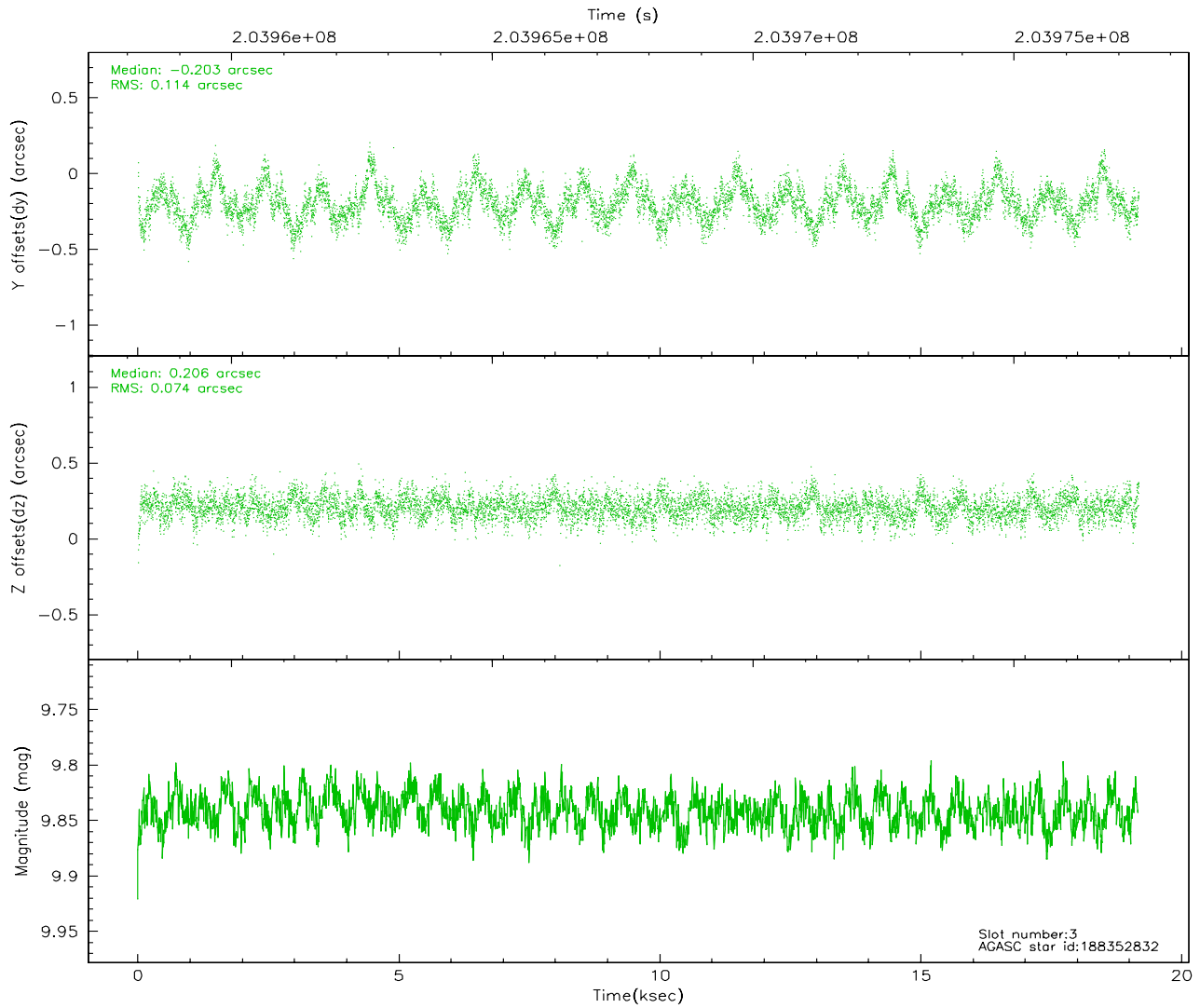
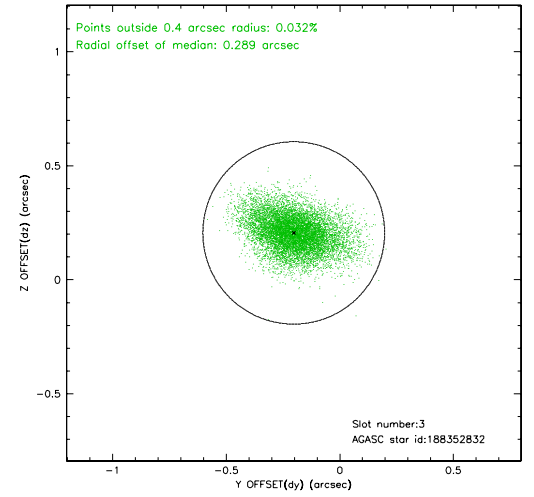
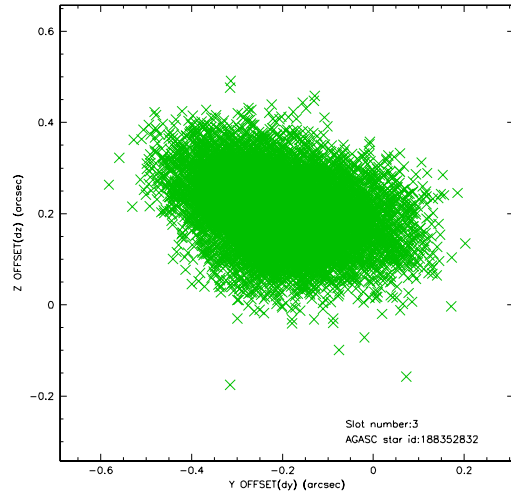


Slot Statistics

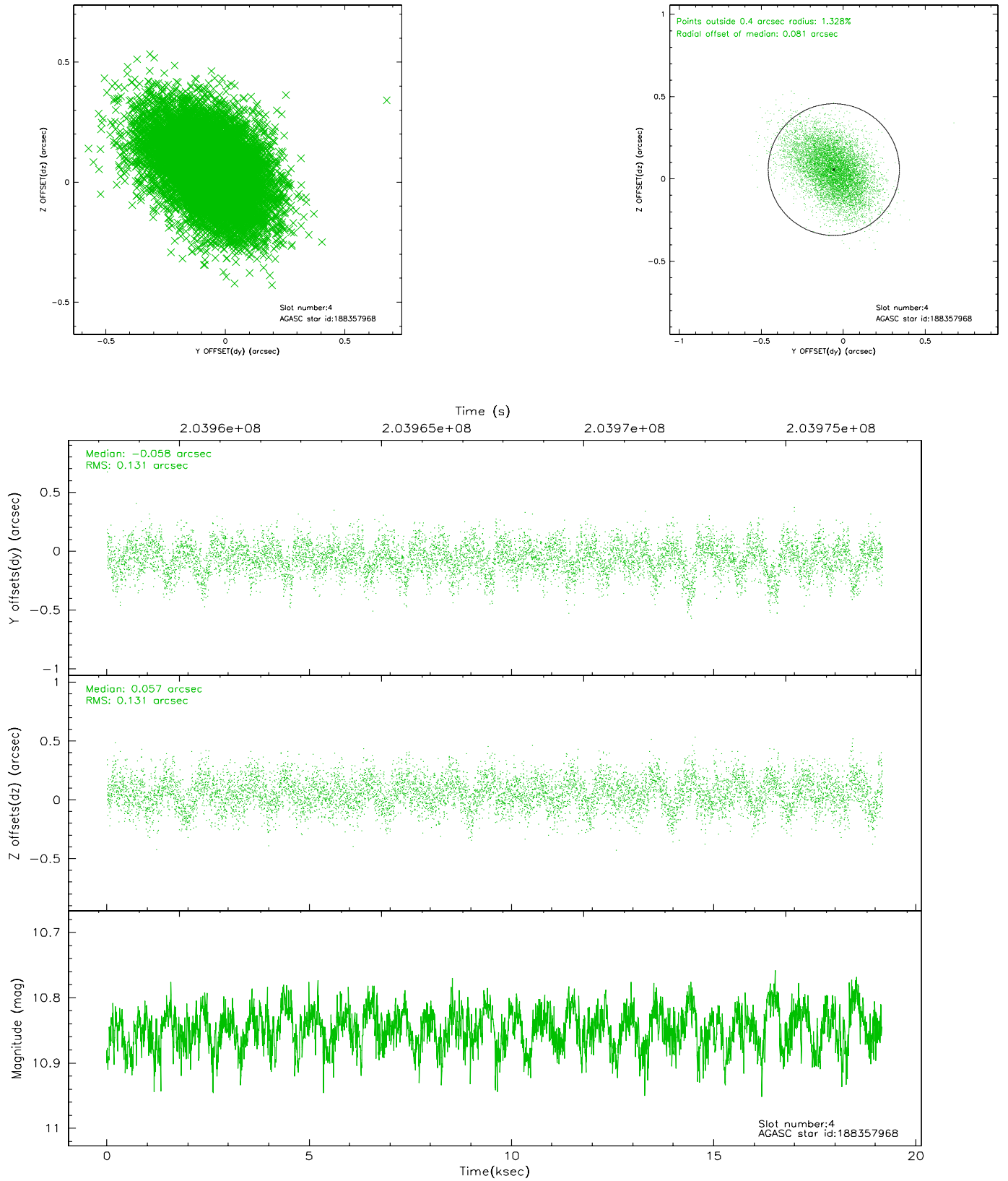
slot	status	id	mag	n_pts	med_dy	med_dz	dr1	dr2	ra	dec	mean_y	mean_z
0	FID	ACIS-I-1	7.23	4677	0.077	-0.087	0.023	0.033	0.000000	0.000000	933.90	-992.79
1	FID	ACIS-I-2	7.17	4677	-0.123	0.079	0.014	0.021	0.000000	0.000000	-760.68	-998.24
2	FID	ACIS-I-4	7.14	4676	-0.053	0.076	0.012	0.017	0.000000	0.000000	2153.05	908.07
3	GUIDE	188352832	9.84	9341	-0.203	0.206	0.140	0.245	169.850472	18.107090	-1898.88	1122.58
4	GUIDE	188357968	10.85	9339	-0.058	0.057	0.194	0.327	168.607093	17.580148	1364.76	-2208.91
5	GUIDE	188360336	10.00	9348	0.206	-0.190	0.167	0.293	168.606298	17.406968	1951.42	-1996.49
6	GUIDE	188368384	10.04	9349	0.188	-0.009	0.137	0.220	168.918377	17.370042	1704.57	-944.62
7	GUIDE	188371152	10.01	9266	-0.152	-0.070	0.117	0.188	169.317956	17.570920	548.63	89.90

2.4 Star Slots

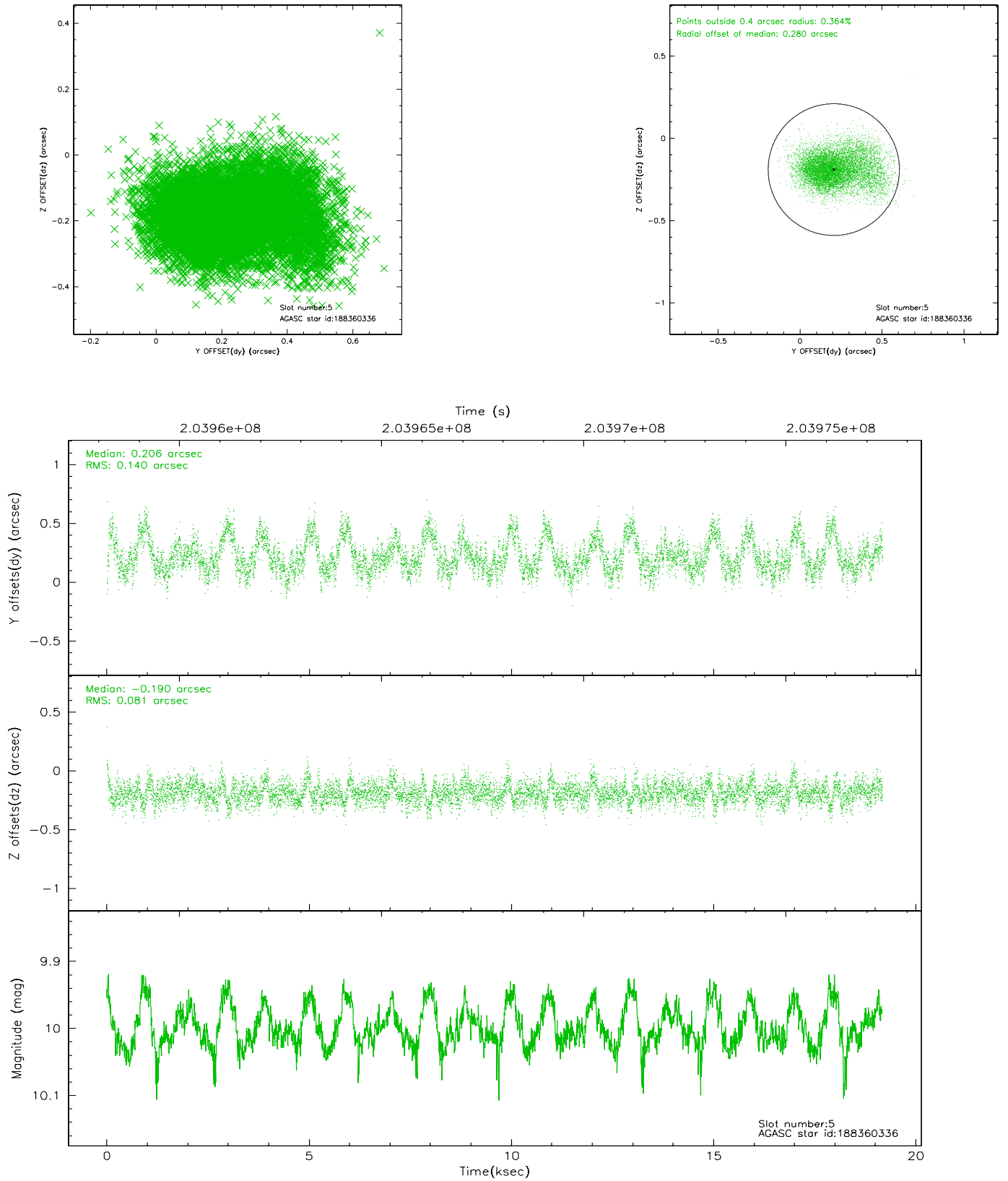
2.4.1 Slot 3



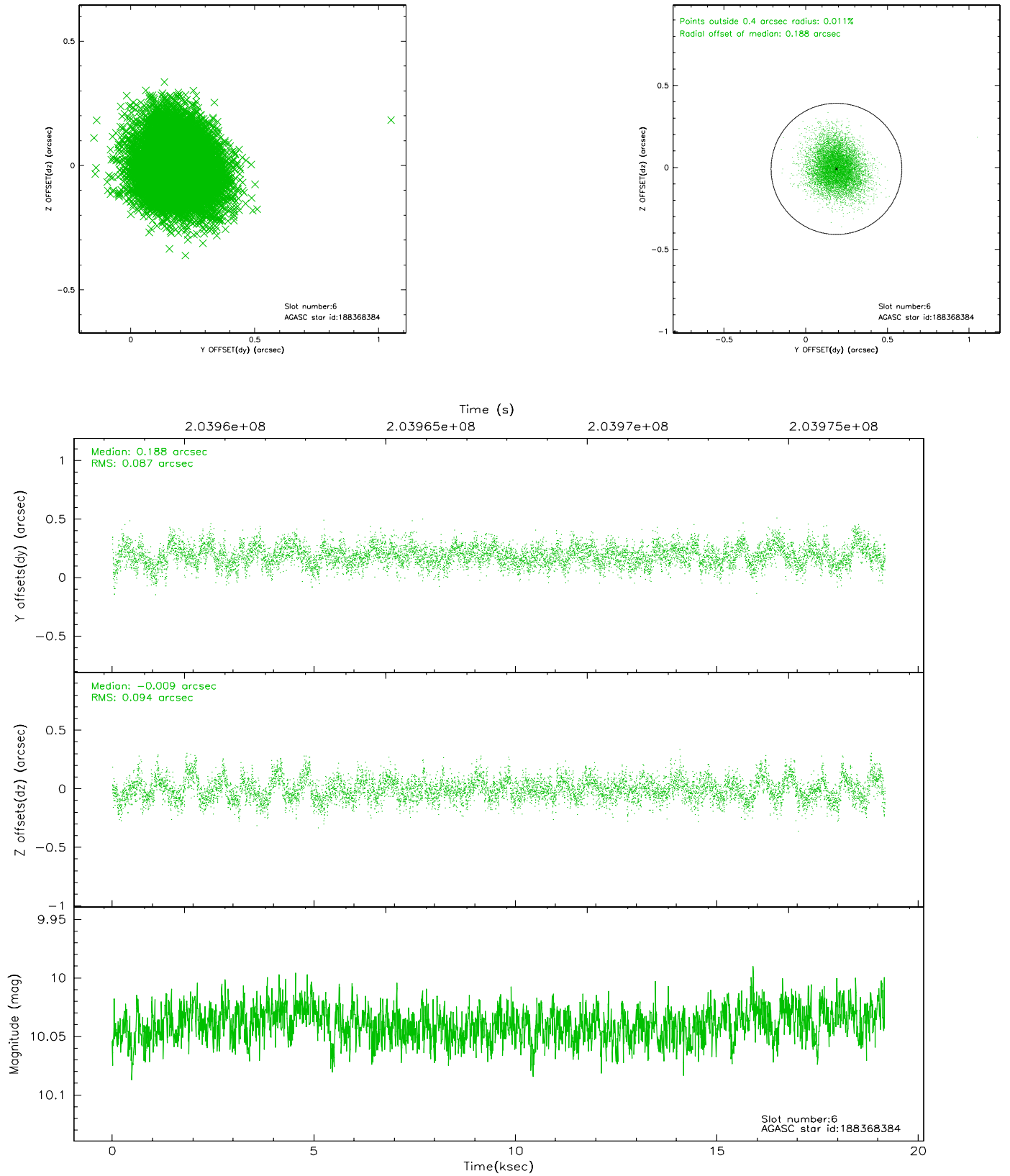
2.4.2 Slot 4



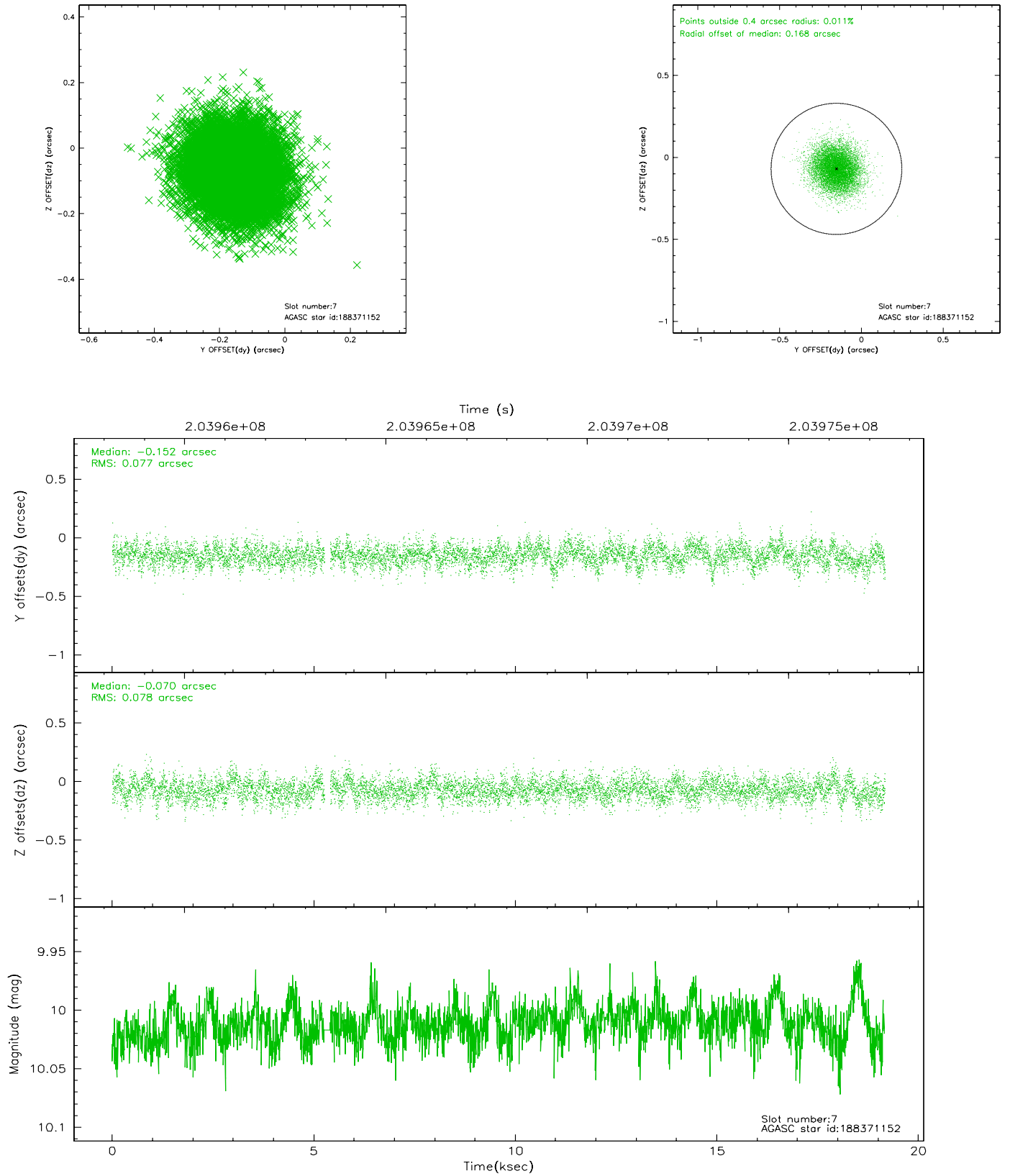
2.4.3 Slot 5



2.4.4 Slot 6

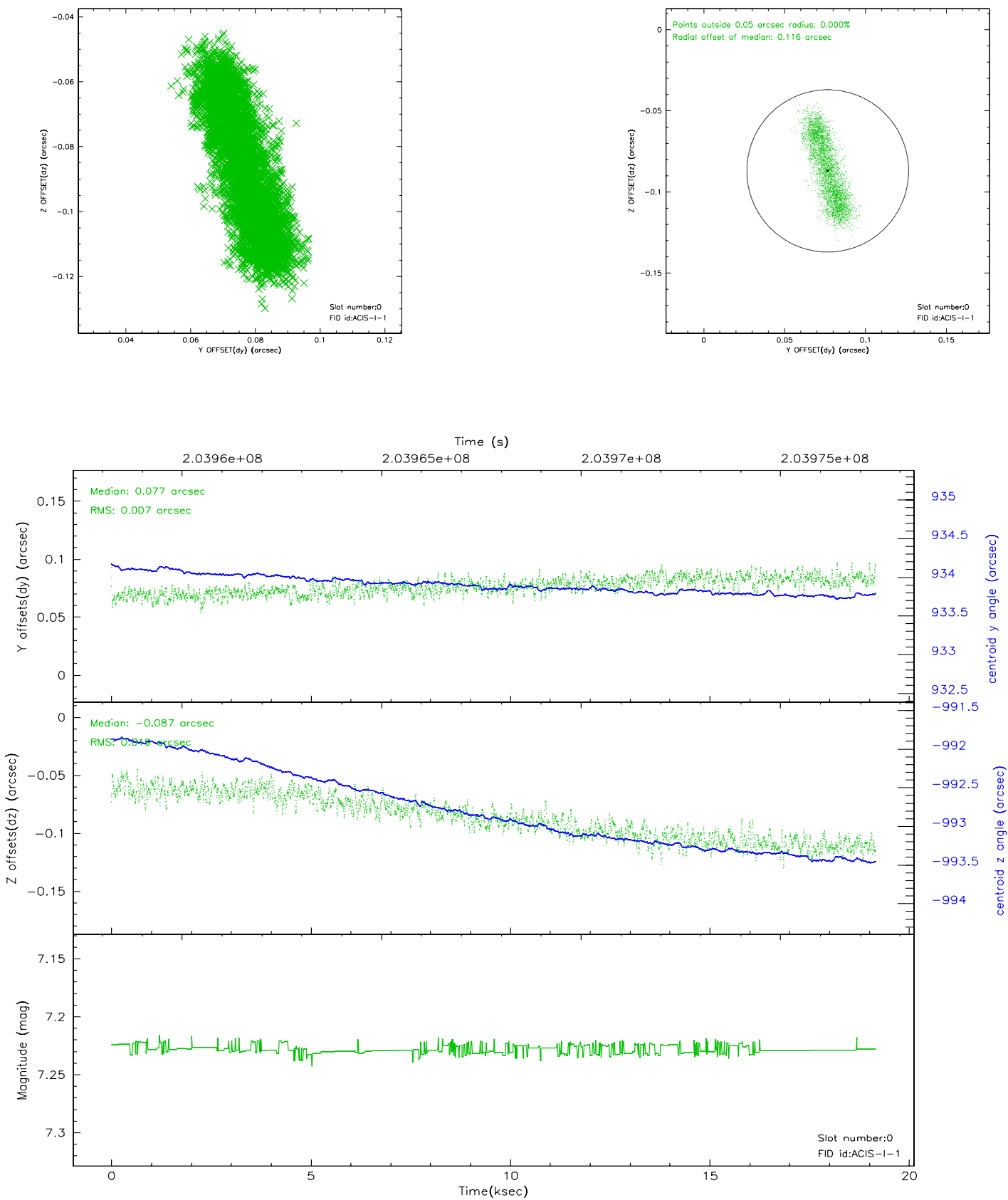


2.4.5 Slot 7

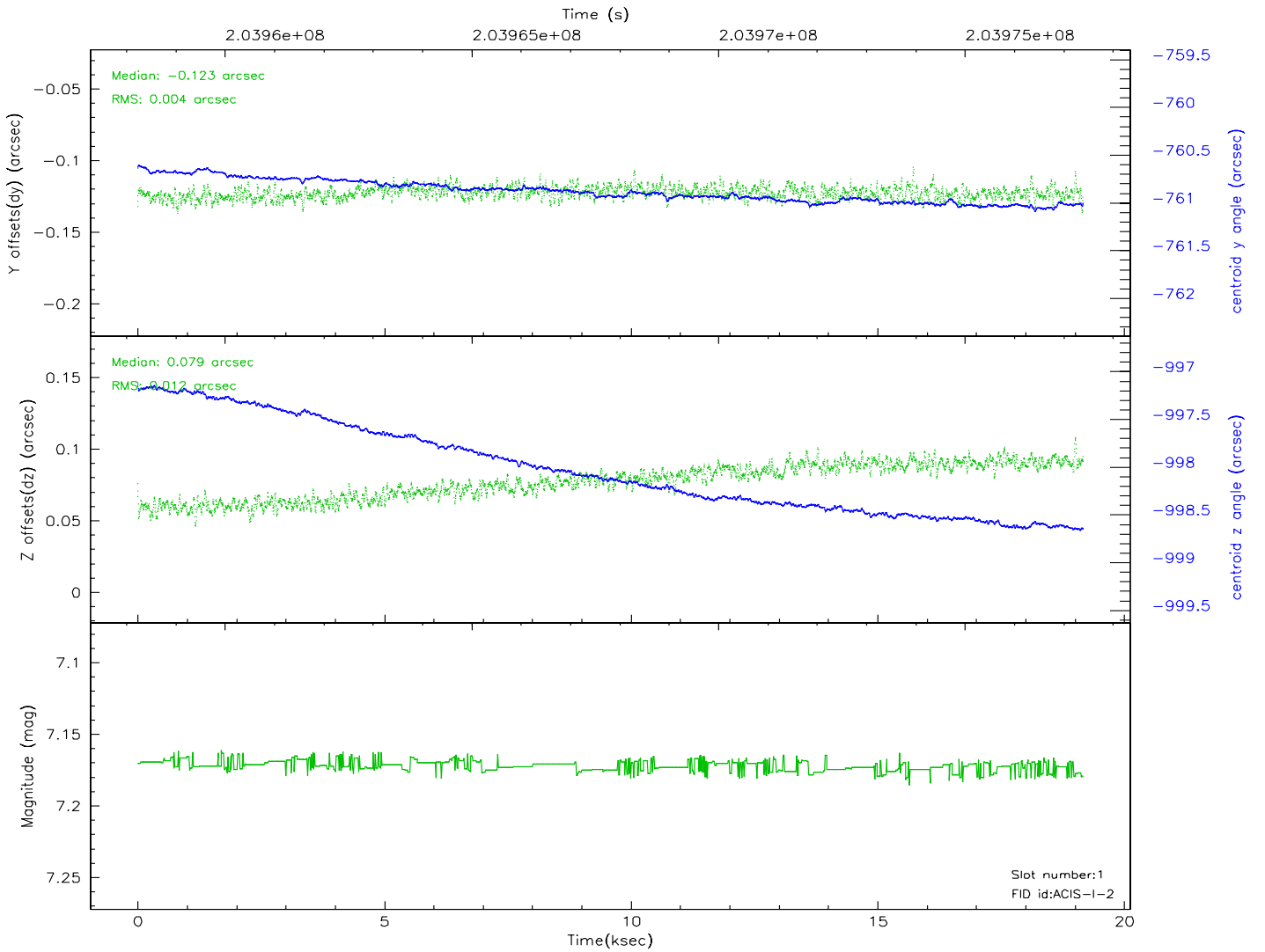
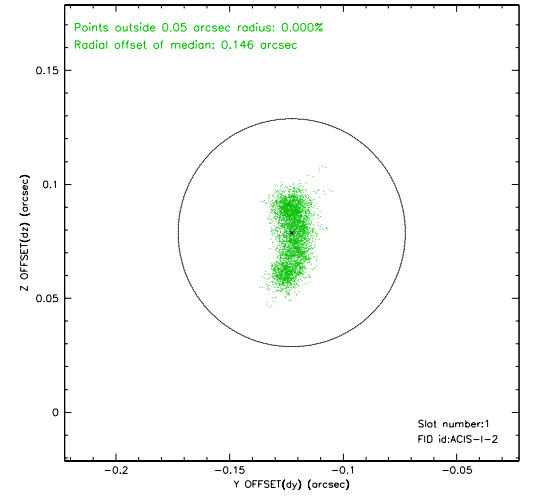
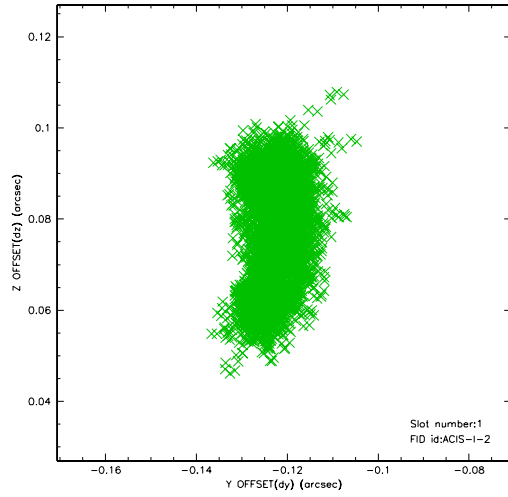


2.5 FID Slots

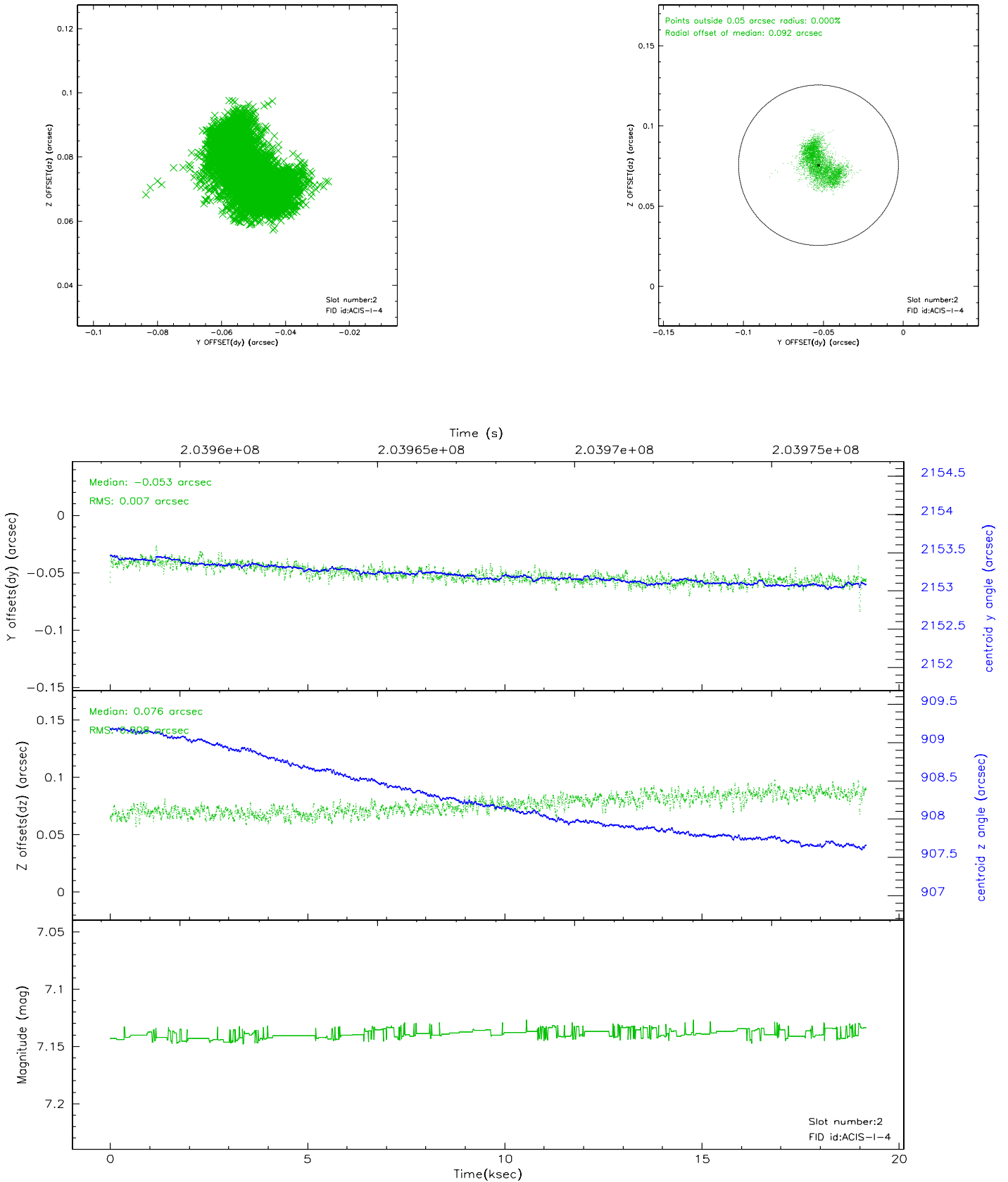
2.5.1 Slot 0



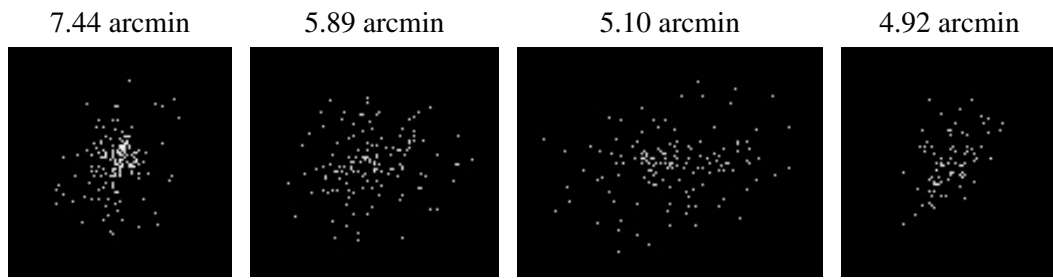
2.5.2 Slot 1



2.5.3 Slot 2



3 Point Sources



A Summary

A.1 Status

V&V Scientist	Jen Lauer
V&V Date (YYYY-MM-DD)	2006.05.23
V&V Edition	1
V&V Disposition and Status	OK
V&V Charge Time	19.052

A.2 Comments