

# V&V Reference Report

## L2 ASCDS Version : 7.6.7.2

Observation 4833 - L2 Version 001  
Chandra X-Ray Center

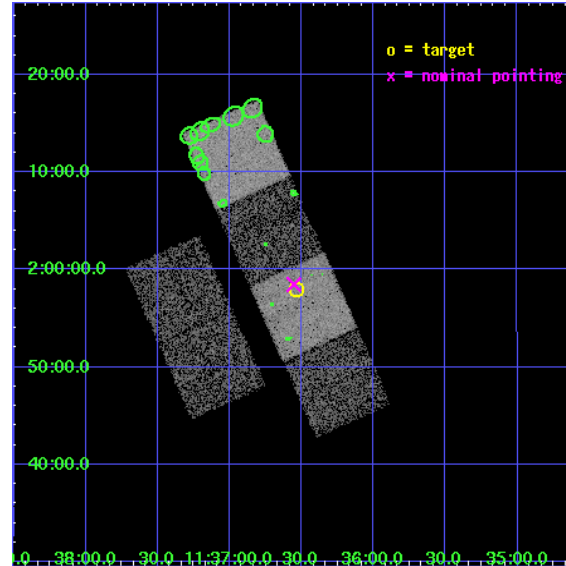
L2 Processing Date : Jun 2 2006

## Contents

<b>1</b>	<b>Front</b>	<b>2</b>
<b>2</b>	<b>OBI</b>	<b>3</b>
2.1	OBI . . . . .	3
2.1.1	Images . . . . .	3
2.1.2	Bias . . . . .	3
2.1.3	Parameters . . . . .	4
2.1.4	Events . . . . .	4
2.2	Compared Parameters . . . . .	5
2.3	Aspect . . . . .	6
2.4	Star Slots . . . . .	9
2.4.1	Slot 3 . . . . .	9
2.4.2	Slot 4 . . . . .	10
2.4.3	Slot 5 . . . . .	11
2.4.4	Slot 6 . . . . .	12
2.4.5	Slot 7 . . . . .	13
2.5	FID Slots . . . . .	14
2.5.1	Slot 0 . . . . .	14
2.5.2	Slot 1 . . . . .	15
2.5.3	Slot 2 . . . . .	16
<b>3</b>	<b>Point Sources</b>	<b>17</b>
<b>A</b>	<b>Summary</b>	<b>18</b>
A.1	Status . . . . .	18
A.2	Comments . . . . .	18

# 1 Front

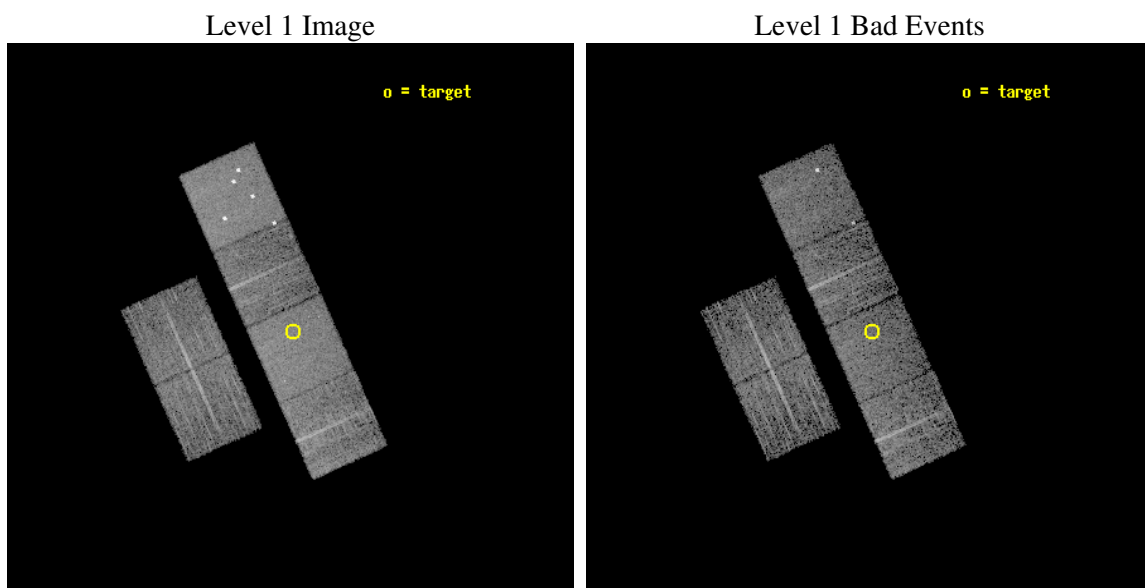
seq_num	700915
obs_id	4833
title	Constraining the Hard-X-ray Through Submm SEDs of a Complete Sample of Broad Absorption Line Quasars
observer	Dr. Sarah Gallagher
object	LBQS 1133+0214
dtcycle	0
cycle	P
ra_targ	174.132917
dec_targ	1.966722
ra_nom	174.13839152976
dec_nom	1.9747621044781
roll_nom	65.88883218745
revision	2
ontime	5980.7999777198
livetime	5905.0674871965
ontime2	5980.7999777198
ontime3	5980.7999777198
ontime5	5980.7999777198
ontime6	5980.7999777198
ontime7	5980.7999777198
ontime8	5980.7999777198
l2events	61402



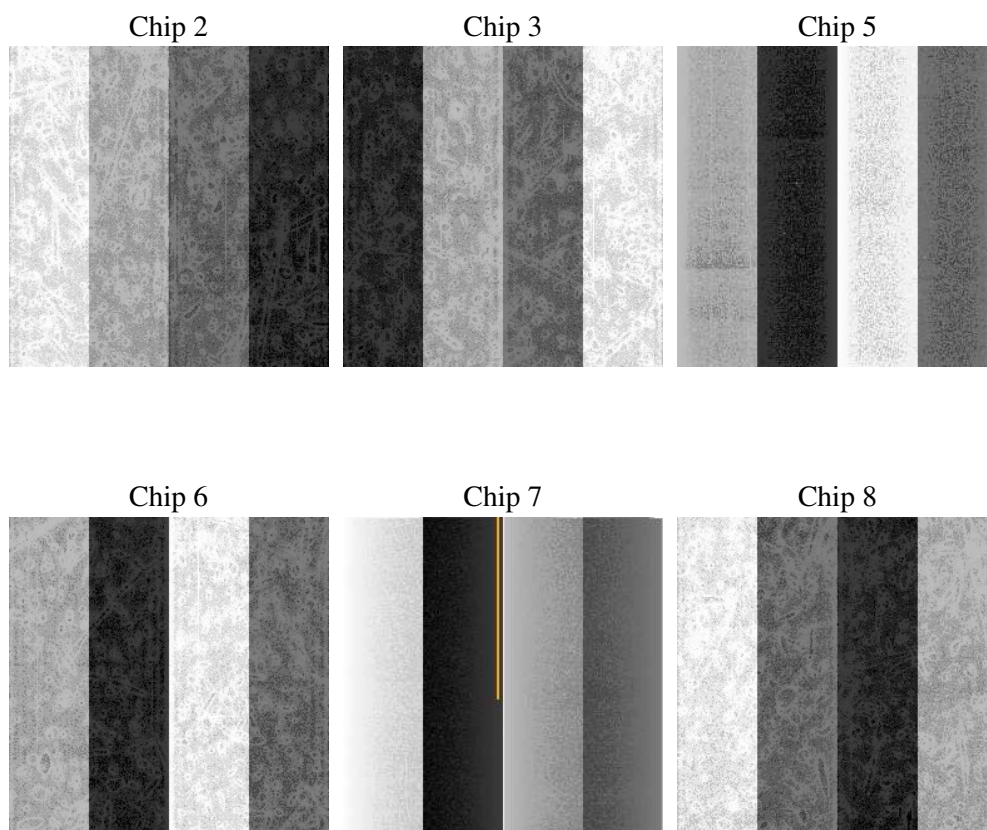
## 2 OBI

### 2.1 OBI

#### 2.1.1 Images



#### 2.1.2 Bias



### 2.1.3 Parameters

obi_num	0
ascdsver	7.6.7.2
caldsver	3.2.2
date	2006-06-02T10:34:19
revision	2

sched_exp_time	6019.994000
ontime	5986.1379820108
ontime2	5986.1379820108
ontime3	5986.1379820108
ontime5	5986.1379820108
ontime6	5986.1379820108
ontime7	5986.1379820108
ontime8	5986.1379820108
l1events	278824

### 2.1.4 Events

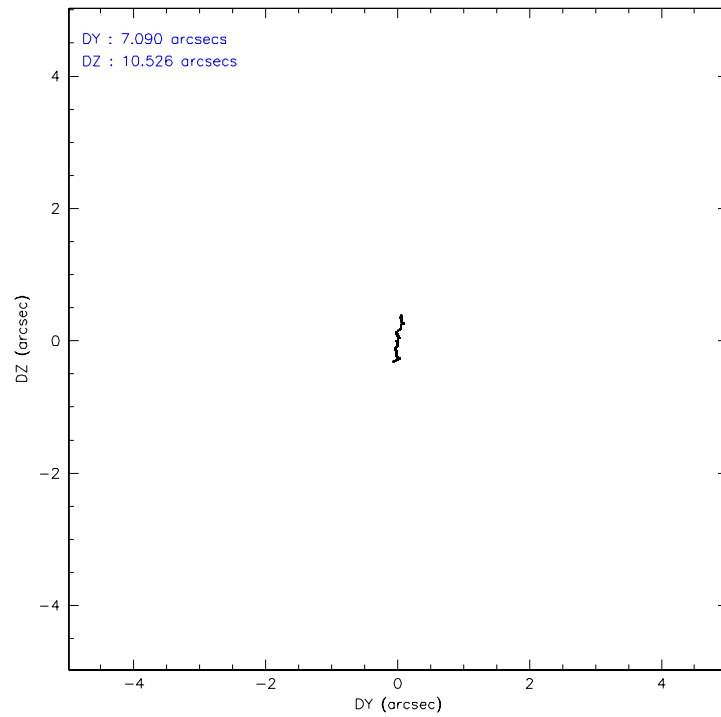
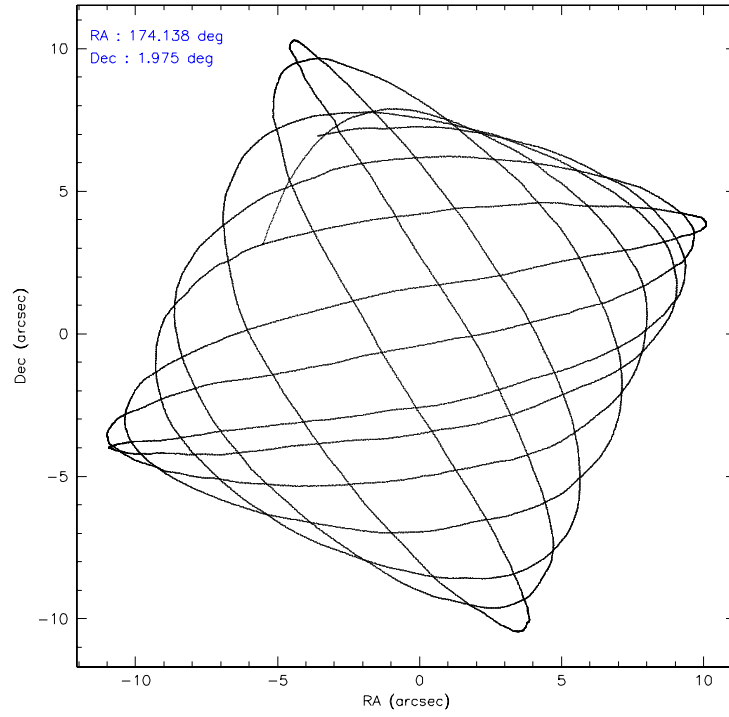
	ccd 2	ccd 3	ccd 5	ccd 6	ccd 7	ccd 8
level 1 events	37918	37890	64078	37841	52867	48230
rejected events	32926	33276	32970	32971	32311	37777
rejected %	86%	87%	51%	87%	61%	78%

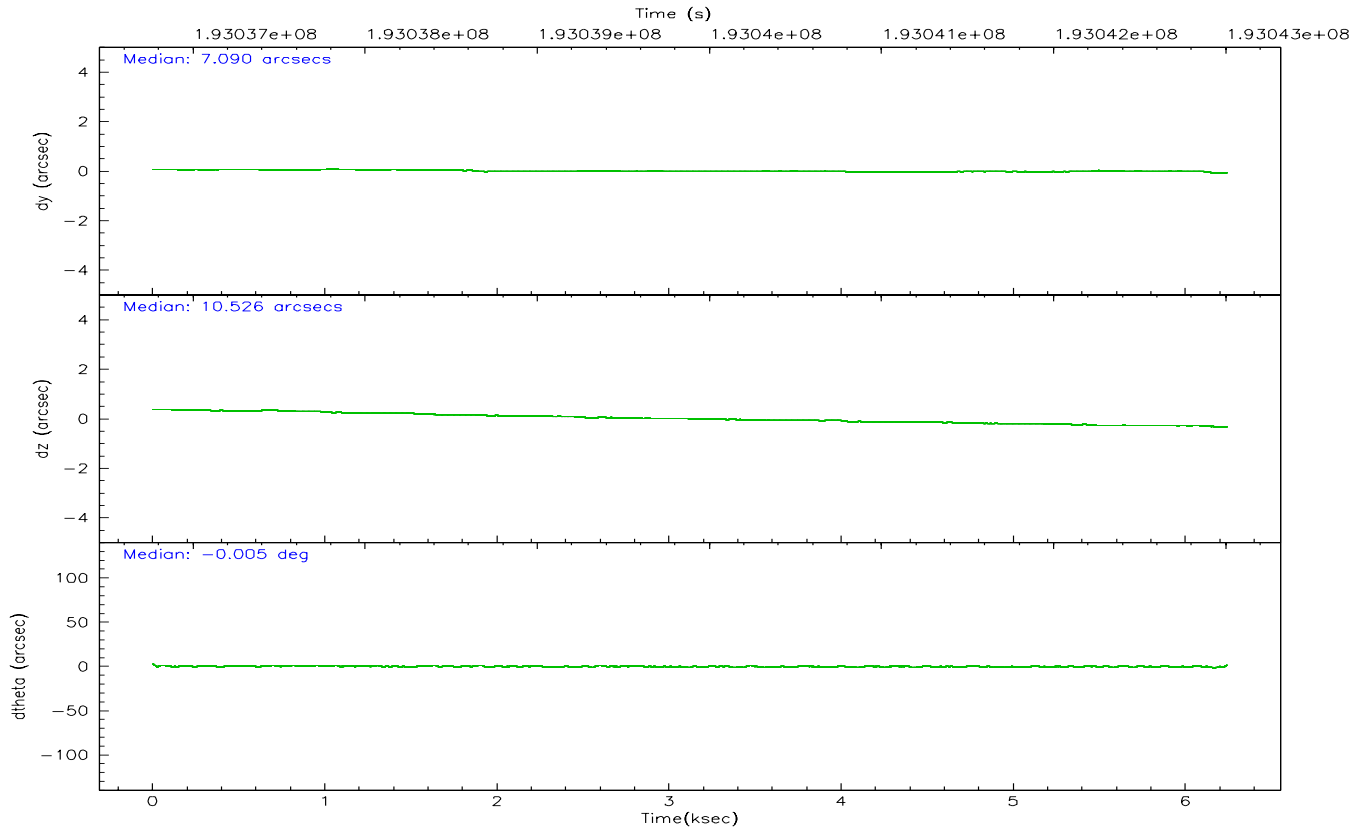
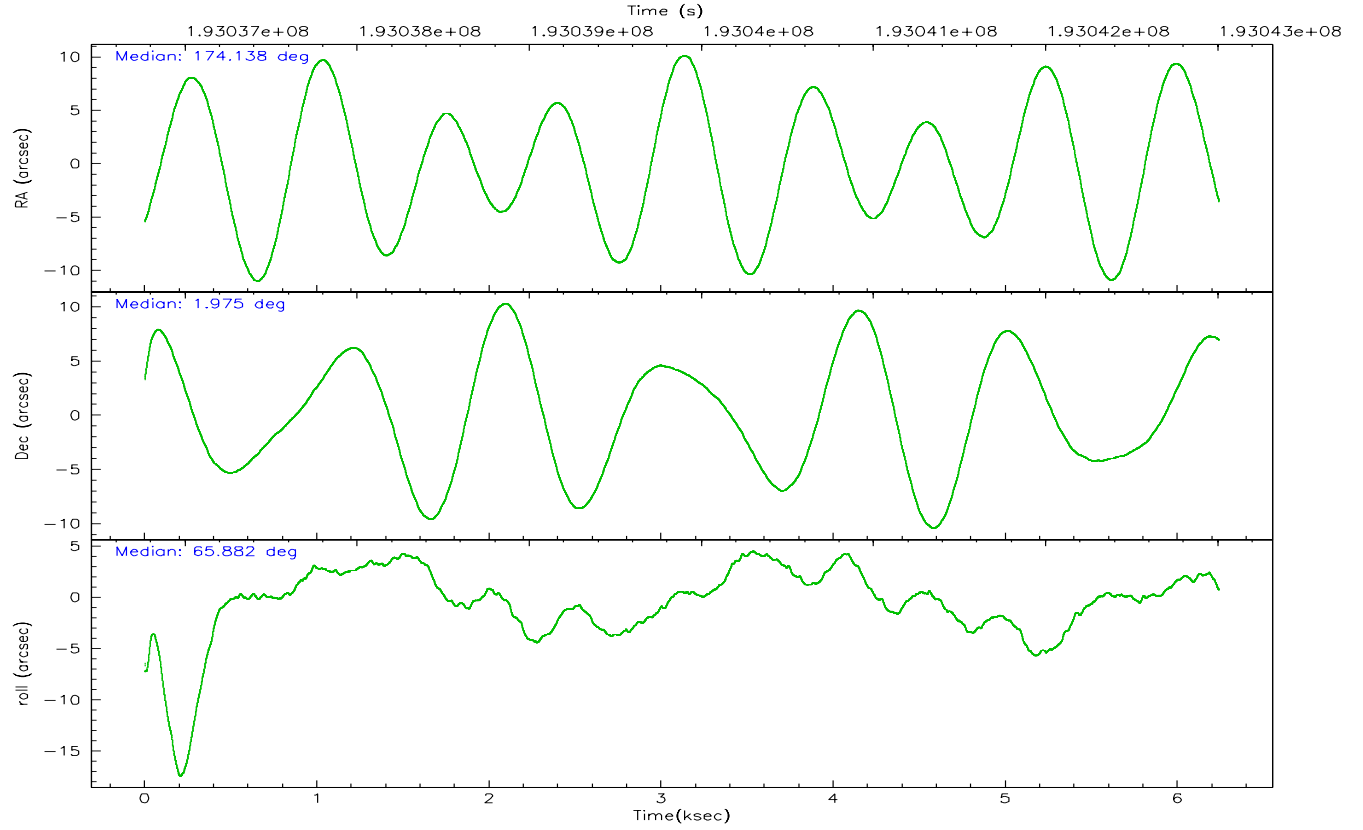
	ccd 2	ccd 3	ccd 5	ccd 6	ccd 7	ccd 8
grade 0 events	2331	2135	6834	2016	1260	3383
	6%	5%	10%	5%	2%	7%
grade 1 events	28	28	285	16	34	12
	0%	0%	0%	0%	0%	0%
grade 2 events	959	864	8233	1018	4959	2315
	2%	2%	12%	2%	9%	4%
grade 3 events	458	461	711	444	1054	1091
	1%	1%	1%	1%	1%	2%
grade 4 events	438	423	538	445	1109	1025
	1%	1%	0%	1%	2%	2%
grade 5 events	1523	1699	2784	1715	3413	2269
	4%	4%	4%	4%	6%	4%
grade 6 events	809	733	14809	950	12186	2642
	2%	1%	23%	2%	23%	5%
grade 7 events	31372	31547	29884	31237	28852	35493
	82%	83%	46%	82%	54%	73%

## 2.2 Compared Parameters

Parameter	Planned	Actual	Parameter	Planned	Actual
Instrument	ACIS	ACIS	Obspar format version number	6	6
Detector	ACIS-235678	ACIS-235678	Obspar file type	PREDICTED	ACTUAL
Grating	NONE	NONE	Obspar update status	NONE	UPDATED
Data mode	FAINT	FAINT	On-chip summing requested	N	N
Observation mode	POINTING	POINTING	Subarray requested	NONE	NONE
Pointing RA	174.141519	174.1383915297575	Alternating exposures requested	N	N
Pointing Dec	1.947678	1.974762104478141	Primary exposure time	0.000000	3.2
Pointing Roll	65.732100	65.88883218744952			
SIM focus pos (mm)	-0.684267	-0.6828225247311905			
SIM defocus (mm)	0	0.001444936568705701			
SIM translation stage pos (mm)	-190.132523	-190.1400660498719			
SIM translation stage offset (mm)	0	0.00754346686406393			
Observation start time	193036992.184000	193036011.53584			
Observation start date	2004-02-13T05:22:08	2004-02-13T05:06:51			
Observation end time	193043012.184000	193043326.96116			
Observation end date	2004-02-13T07:02:28	2004-02-13T07:08:46			
Read mode	TIMED	TIMED			

## 2.3 Aspect





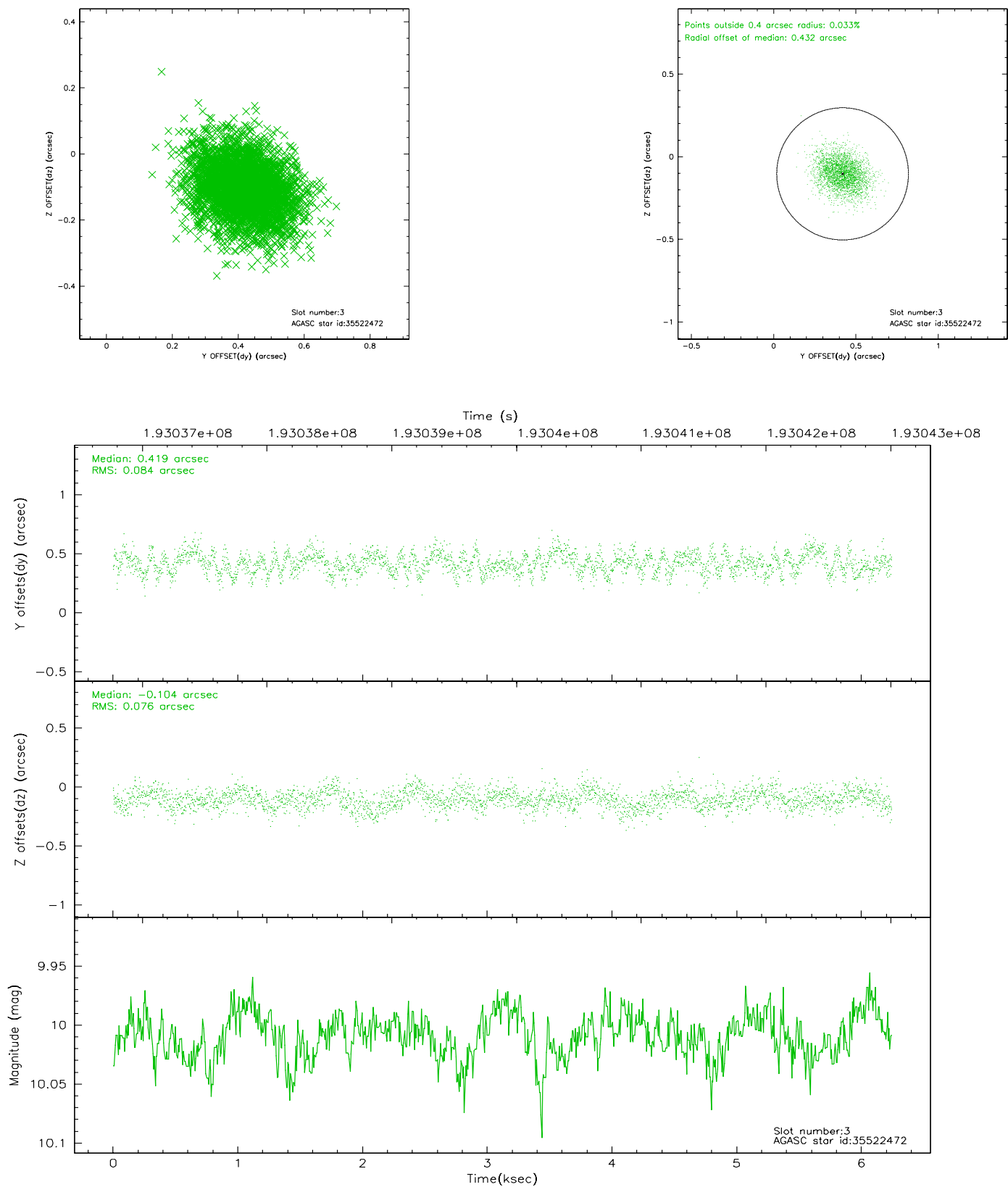
### Slot Statistics

slot	status	id	mag	n_pts	med_dy	med_dz	dr1	dr2	ra	dec	mean_y	mean_z
0	FID	ACIS-S-2	7.10	1522	-0.034	0.017	0.008	0.013	0.000000	0.000000	-759.85	-1731.80
1	FID	ACIS-S-4	7.20	1522	0.017	0.012	0.006	0.011	0.000000	0.000000	2153.01	175.75
2	FID	ACIS-S-5	7.23	1523	-0.015	-0.020	0.006	0.010	0.000000	0.000000	-1811.50	170.39
3	GUIDE	35522472	10.01	3042	0.419	-0.104	0.121	0.194	173.454354	1.752244	-1657.06	1965.29
4	GUIDE	35523840	9.48	3042	-0.473	-0.087	0.092	0.151	173.688311	1.495853	-2154.17	819.07
5	GUIDE	35526016	9.88	3044	0.021	-0.030	0.111	0.180	174.604709	2.365238	2054.61	-900.37
6	GUIDE	35527256	9.41	3045	0.029	0.100	0.083	0.136	174.539165	1.926361	519.02	-1335.52
7	GUIDE	35527592	8.61	3045	0.007	0.123	0.071	0.109	174.333458	1.937422	250.48	-644.64

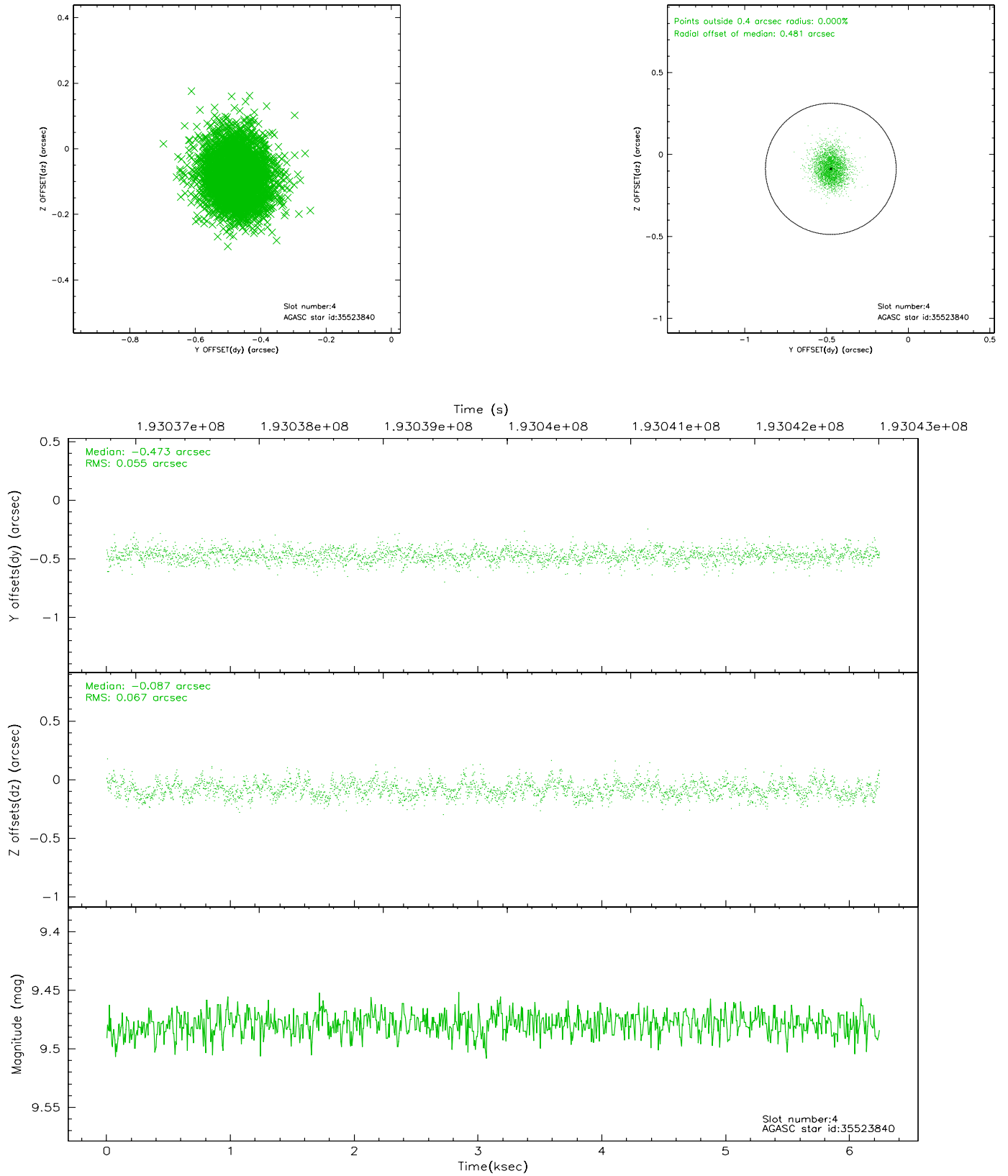


## 2.4 Star Slots

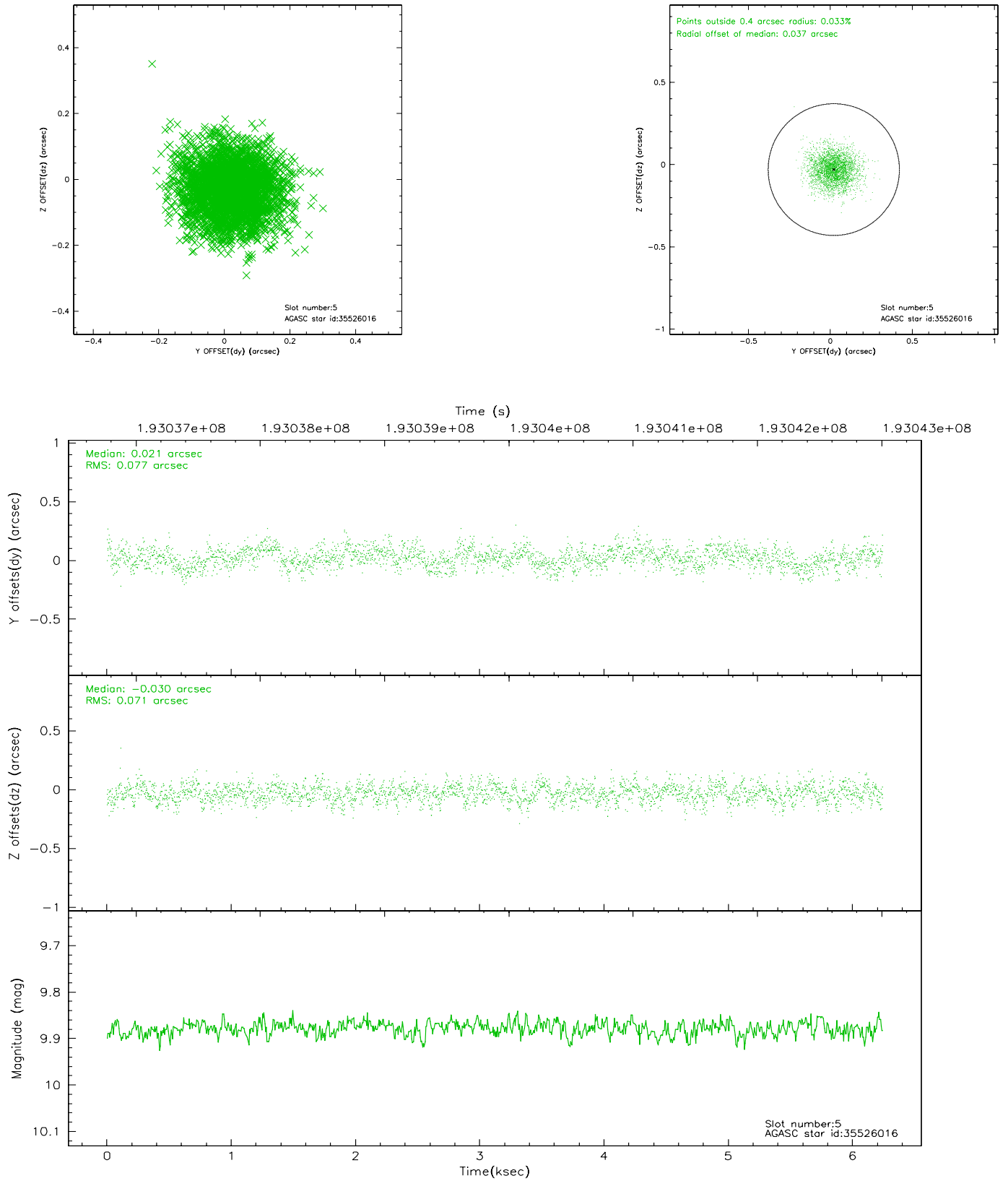
### 2.4.1 Slot 3



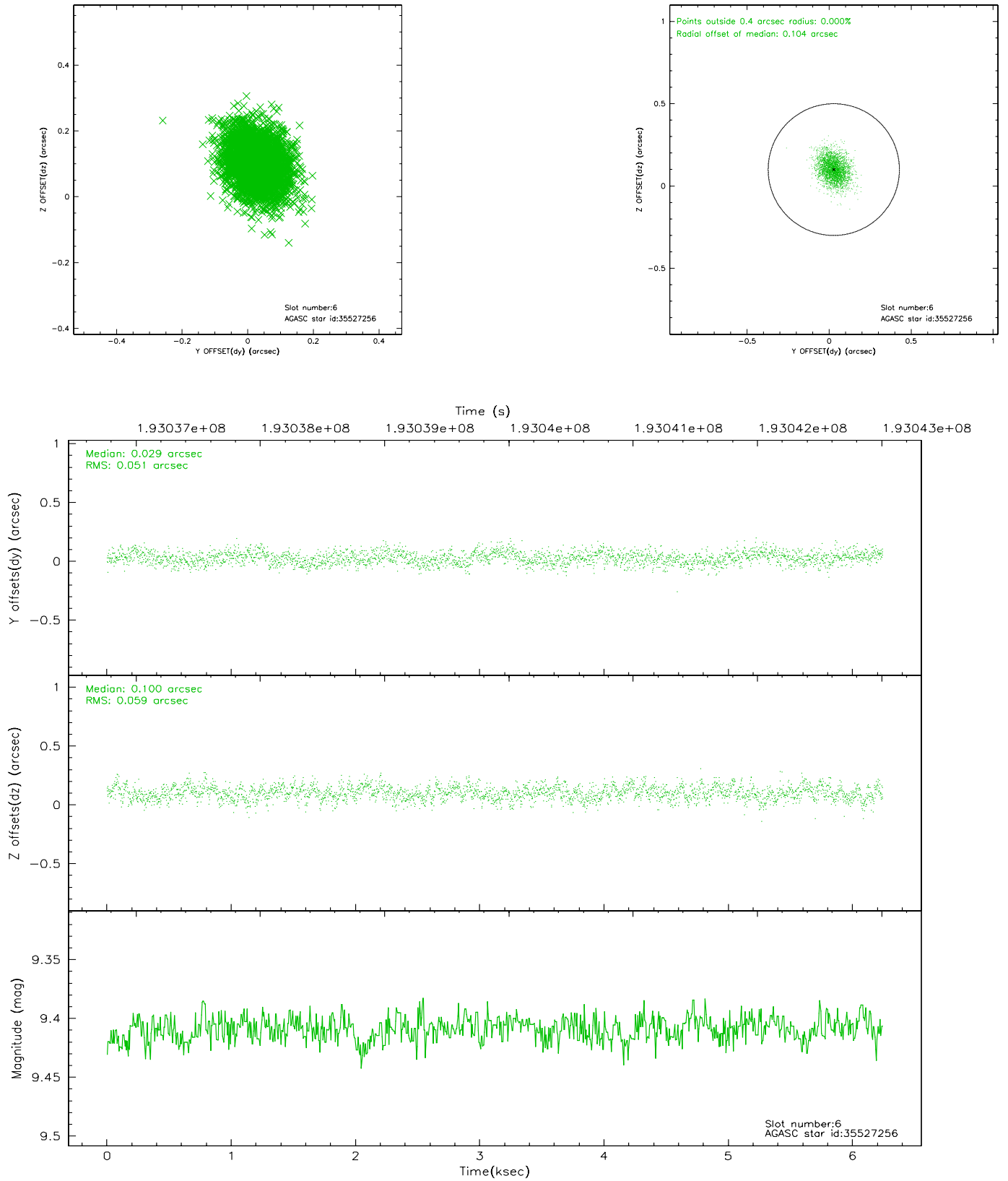
## 2.4.2 Slot 4



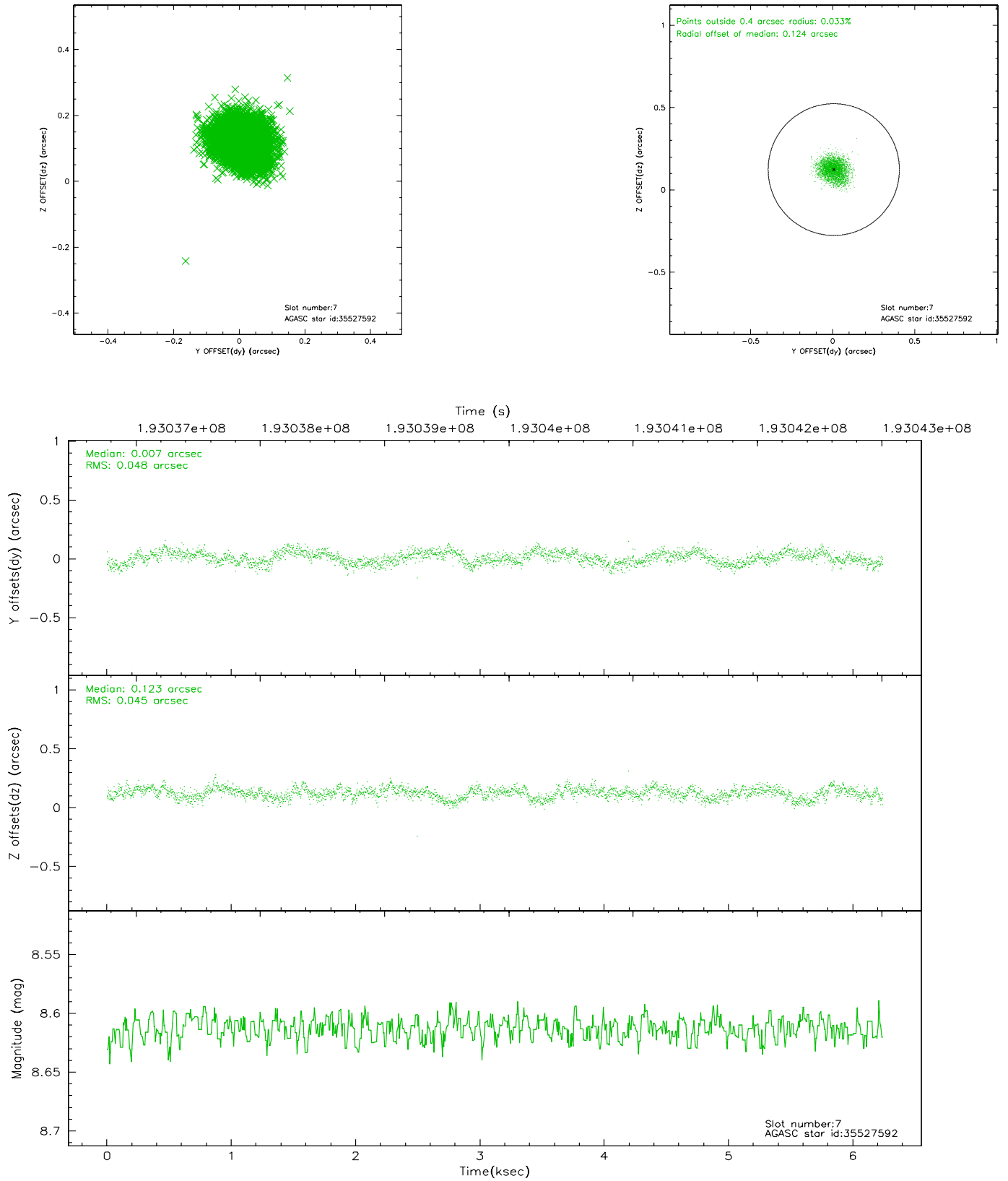
### 2.4.3 Slot 5



## 2.4.4 Slot 6

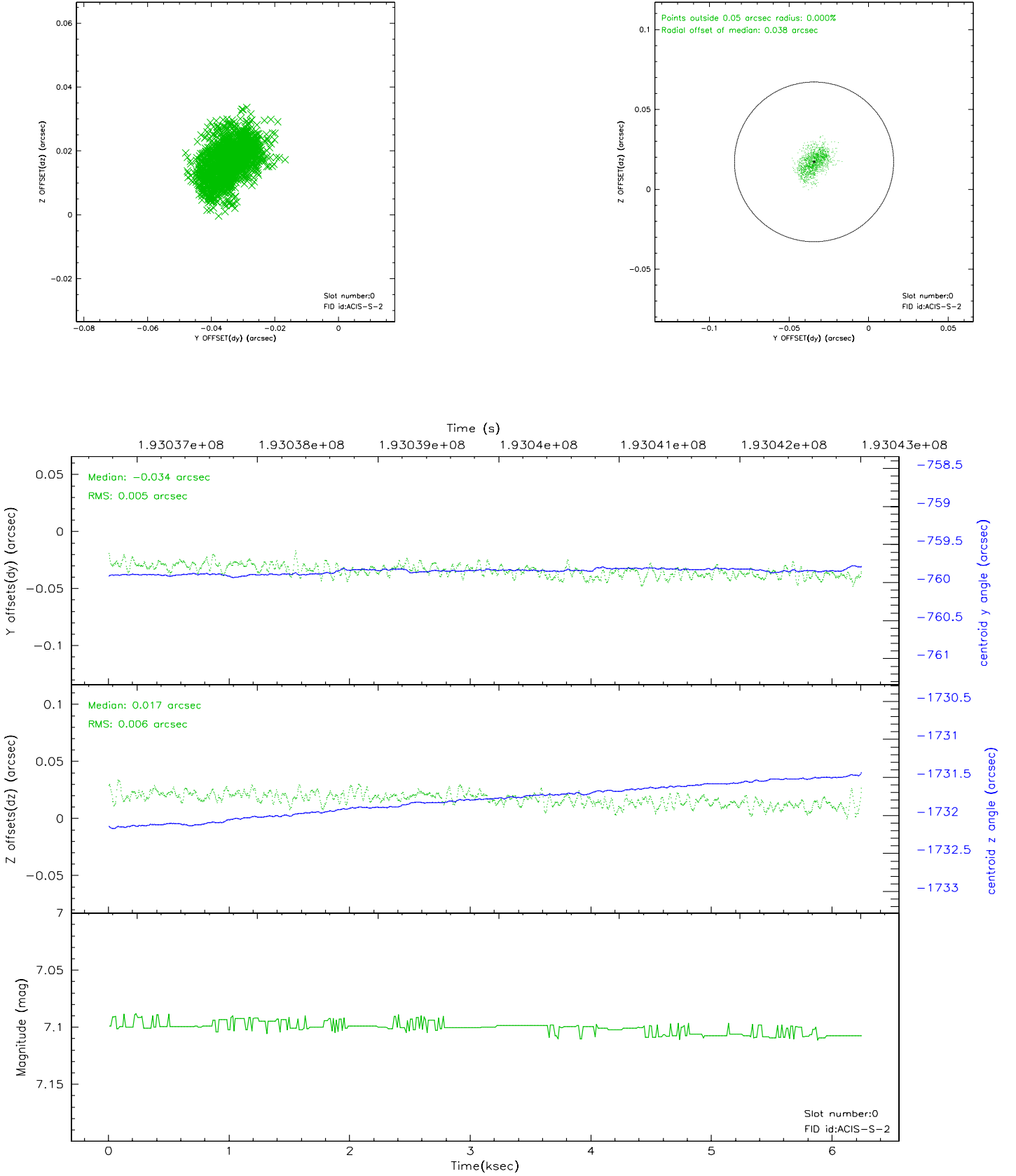


## 2.4.5 Slot 7

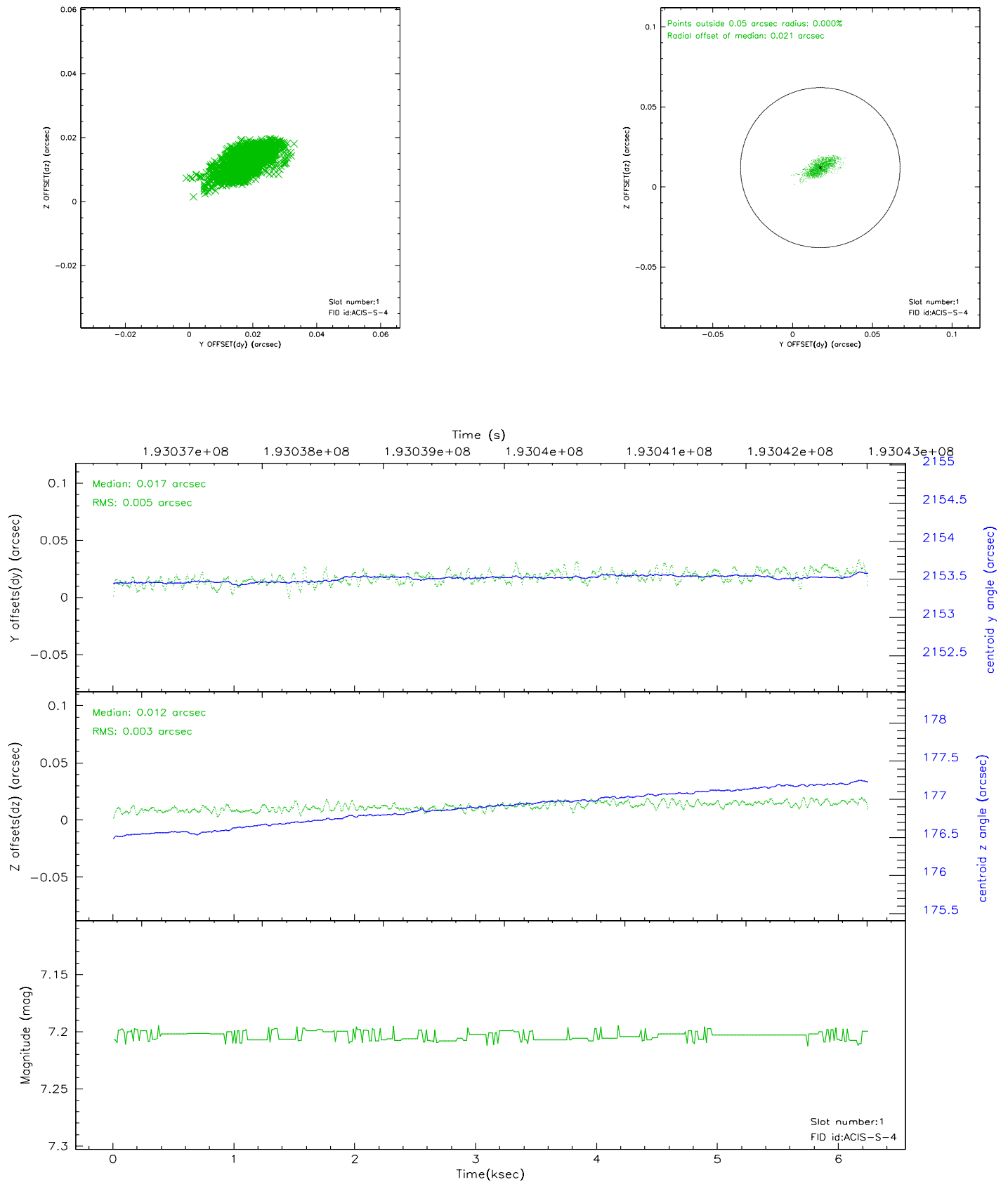


## 2.5 FID Slots

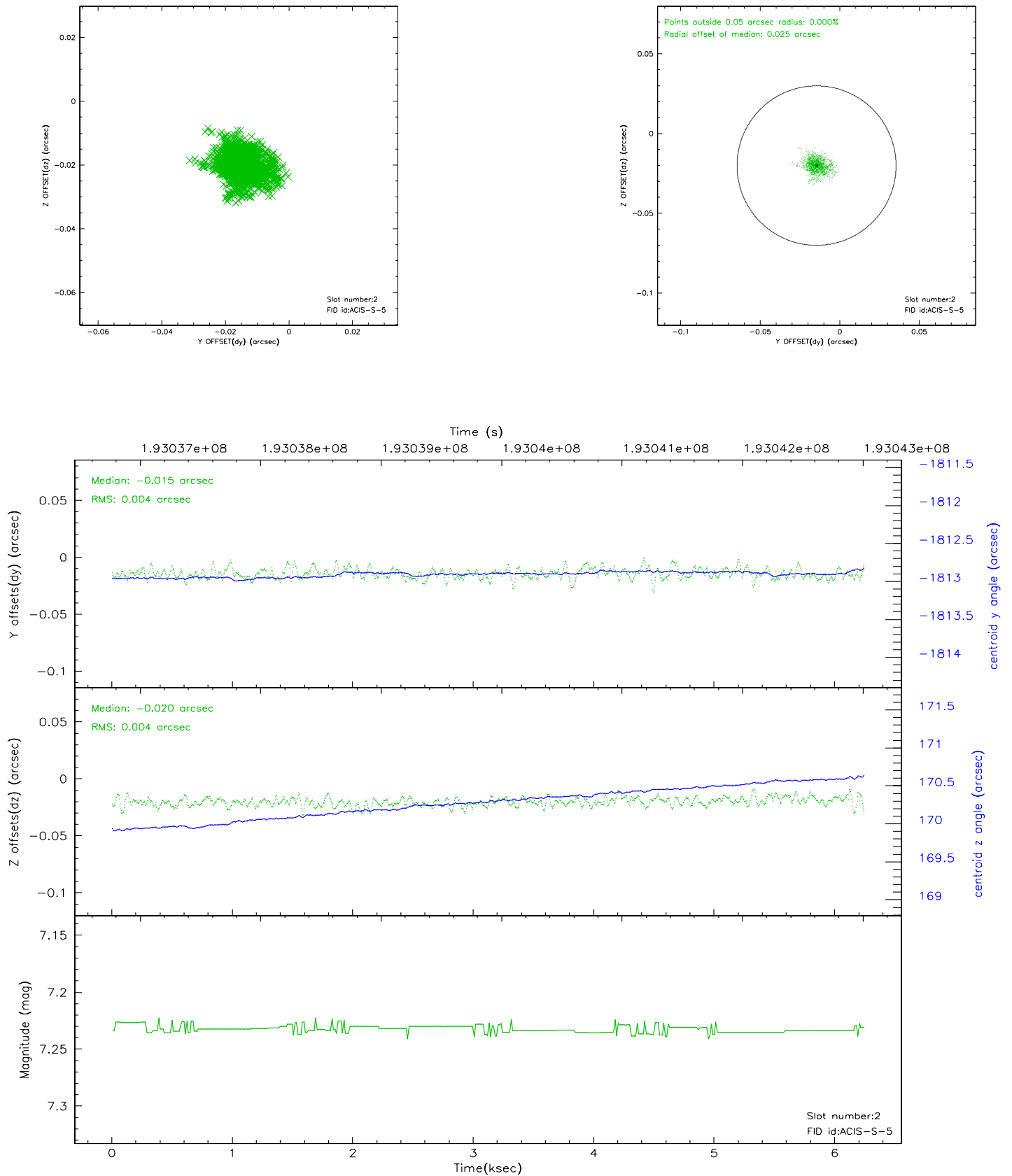
### 2.5.1 Slot 0



## 2.5.2 Slot 1

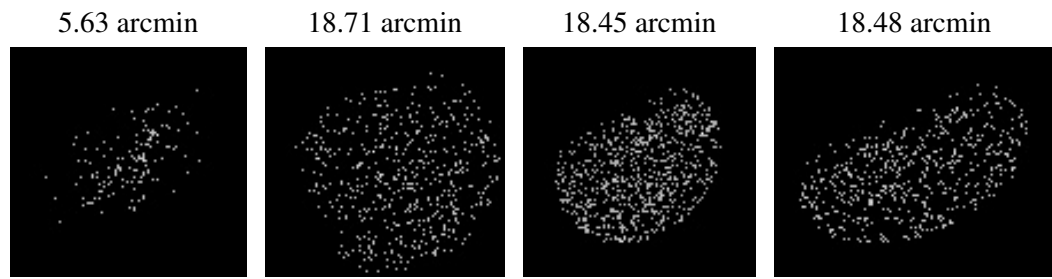


### 2.5.3 Slot 2





### 3 Point Sources



## A Summary

### A.1 Status

V&V Scientist	Jen Lauer
V&V Date (YYYY-MM-DD)	2006.06.02
V&V Edition	1
V&V Disposition and Status	OK
V&V Charge Time	5.98

### A.2 Comments