

# V&V Reference Report

## L2 ASCDS Version : 7.6.7.2

Observation 4823 - L2 Version 001  
Chandra X-Ray Center

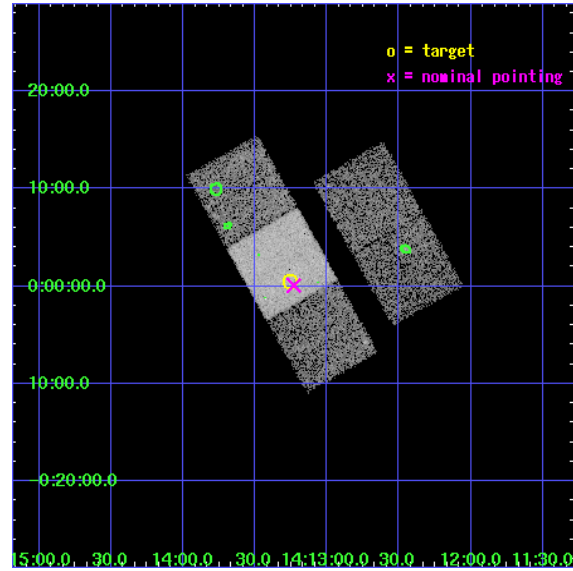
L2 Processing Date : May 1 2006

## Contents

<b>1</b>	<b>Front</b>	<b>2</b>
<b>2</b>	<b>OBI</b>	<b>3</b>
2.1	OBI . . . . .	3
2.1.1	Images . . . . .	3
2.1.2	Bias . . . . .	3
2.1.3	Parameters . . . . .	4
2.1.4	Events . . . . .	4
2.2	Compared Parameters . . . . .	5
2.3	Aspect . . . . .	6
2.4	Star Slots . . . . .	9
2.4.1	Slot 3 . . . . .	9
2.4.2	Slot 4 . . . . .	10
2.4.3	Slot 5 . . . . .	11
2.4.4	Slot 6 . . . . .	12
2.4.5	Slot 7 . . . . .	13
2.5	FID Slots . . . . .	14
2.5.1	Slot 0 . . . . .	14
2.5.2	Slot 1 . . . . .	15
2.5.3	Slot 2 . . . . .	16
<b>3</b>	<b>Point Sources</b>	<b>17</b>
<b>A</b>	<b>Summary</b>	<b>18</b>
A.1	Status . . . . .	18
A.2	Comments . . . . .	18

# 1 Front

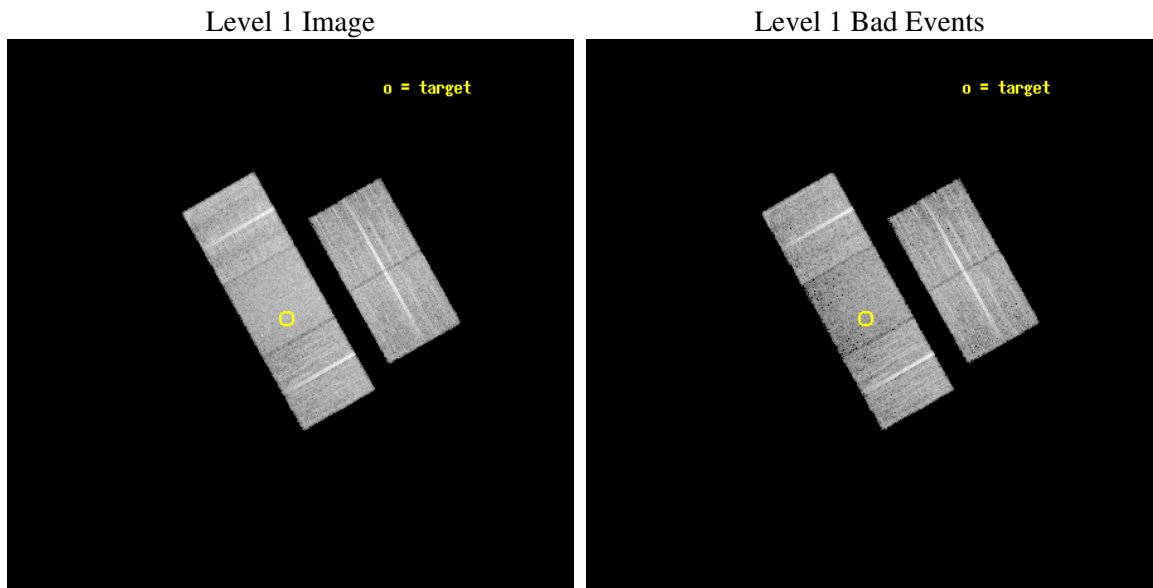
seq_num	700905
obs_id	4823
title	Destroying Degeneracy: Spanning the Luminosity Range for Radio-Quiet Quasars at $z=4$
observer	Dr. Jill Bechtold
object	SDS1413+000
dtcycle	0
cycle	P
ra_targ	213.31375
dec_targ	0.008889
ra_nom	213.30759369747
dec_nom	0.0014594578450355
roll_nom	240.5381559676
revision	2
ontime	12632.499975711
livetime	12467.447063617
ontime2	12629.358975559
ontime3	12629.358995467
ontime6	12632.499975711
ontime7	12632.499975711
ontime8	12626.218065023
l2events	62377



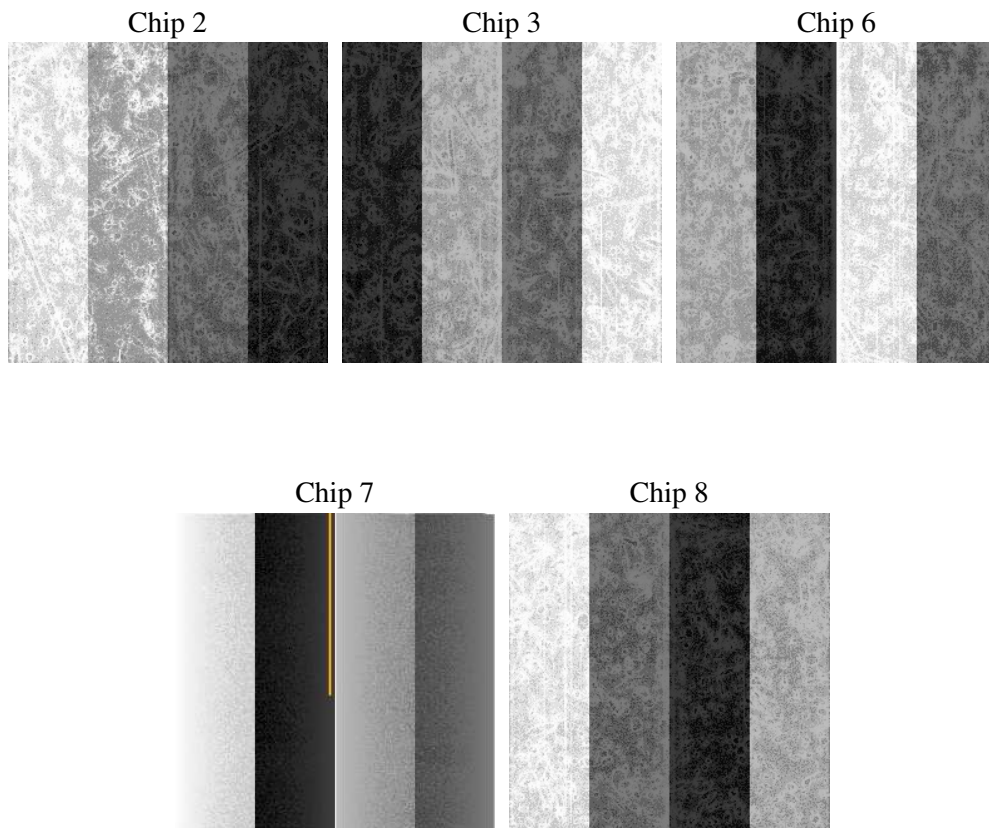
## 2 OBI

### 2.1 OBI

#### 2.1.1 Images



#### 2.1.2 Bias



### 2.1.3 Parameters

obi_num	0
ascdsver	7.6.7.2
caldsver	3.2.1
date	2006-05-01T16:06:35
revision	2

sched_exp_time	12594.310000
ontime	12636.27398935
ontime2	12633.13296929
ontime3	12633.133009106
ontime6	12636.273969442
ontime7	12636.27398935
ontime8	12629.992058754
l1events	419586

### 2.1.4 Events

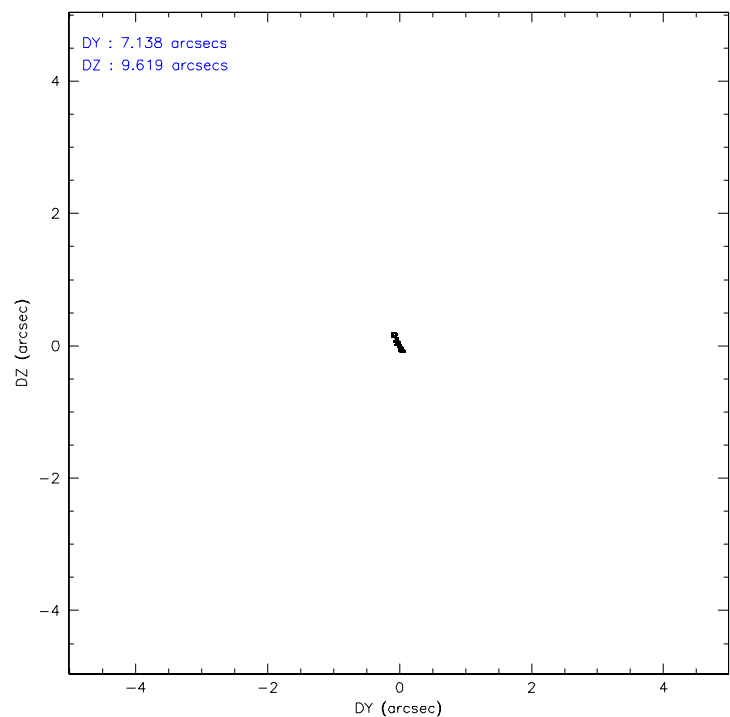
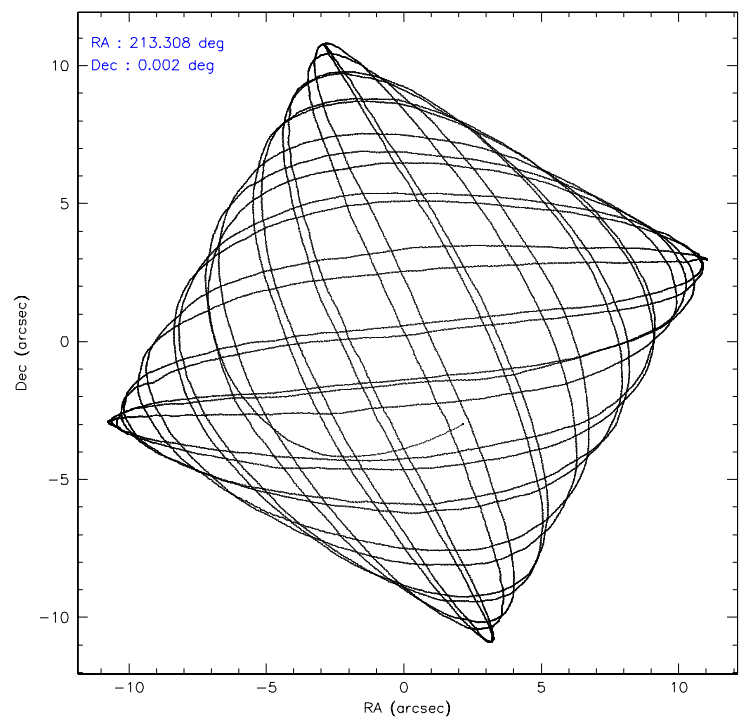
	<b>ccd 2</b>	<b>ccd 3</b>	<b>ccd 6</b>	<b>ccd 7</b>	<b>ccd 8</b>
level 1 events	80403	77493	78973	85180	97537
rejected events	72955	70373	70964	49526	75724
rejected %	90%	90%	89%	58%	77%

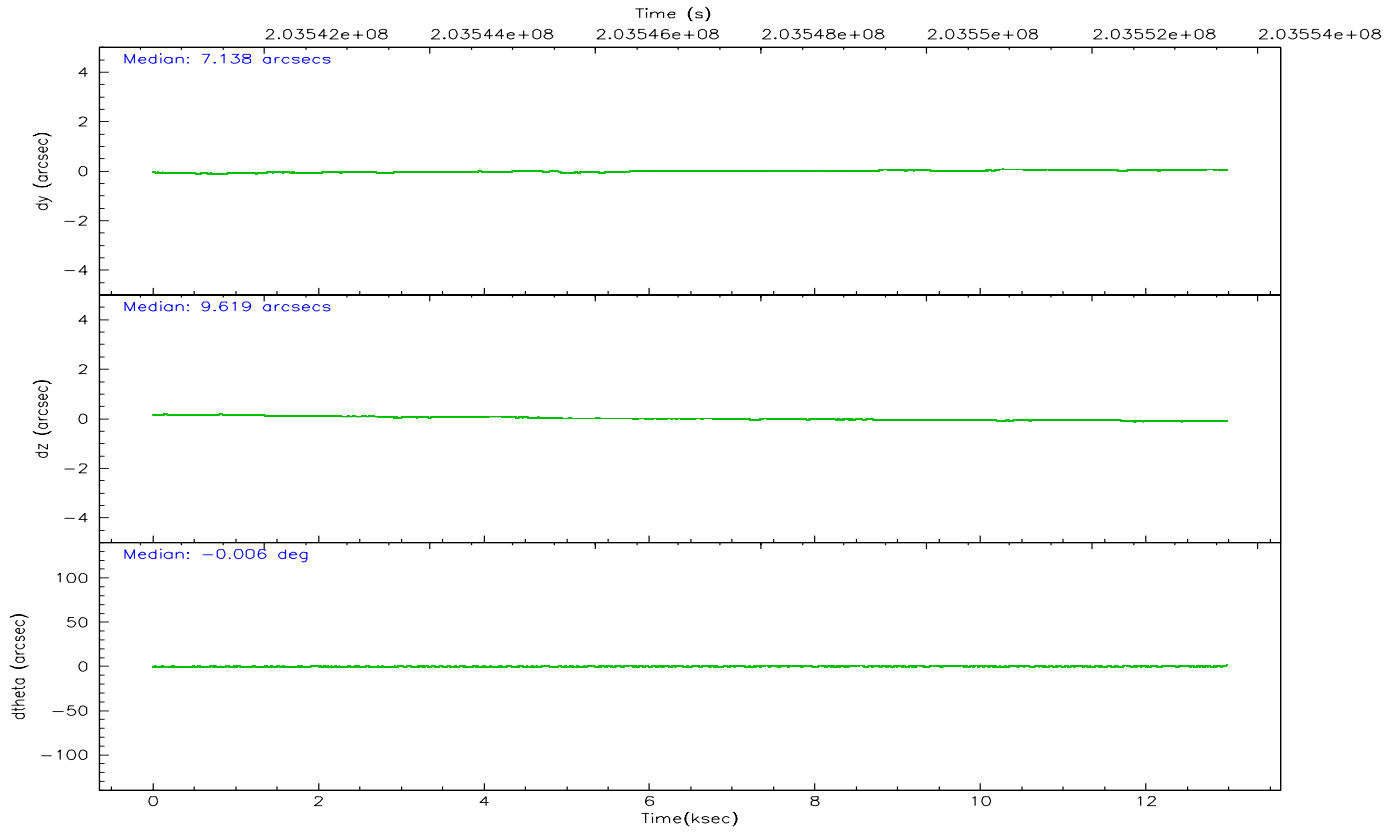
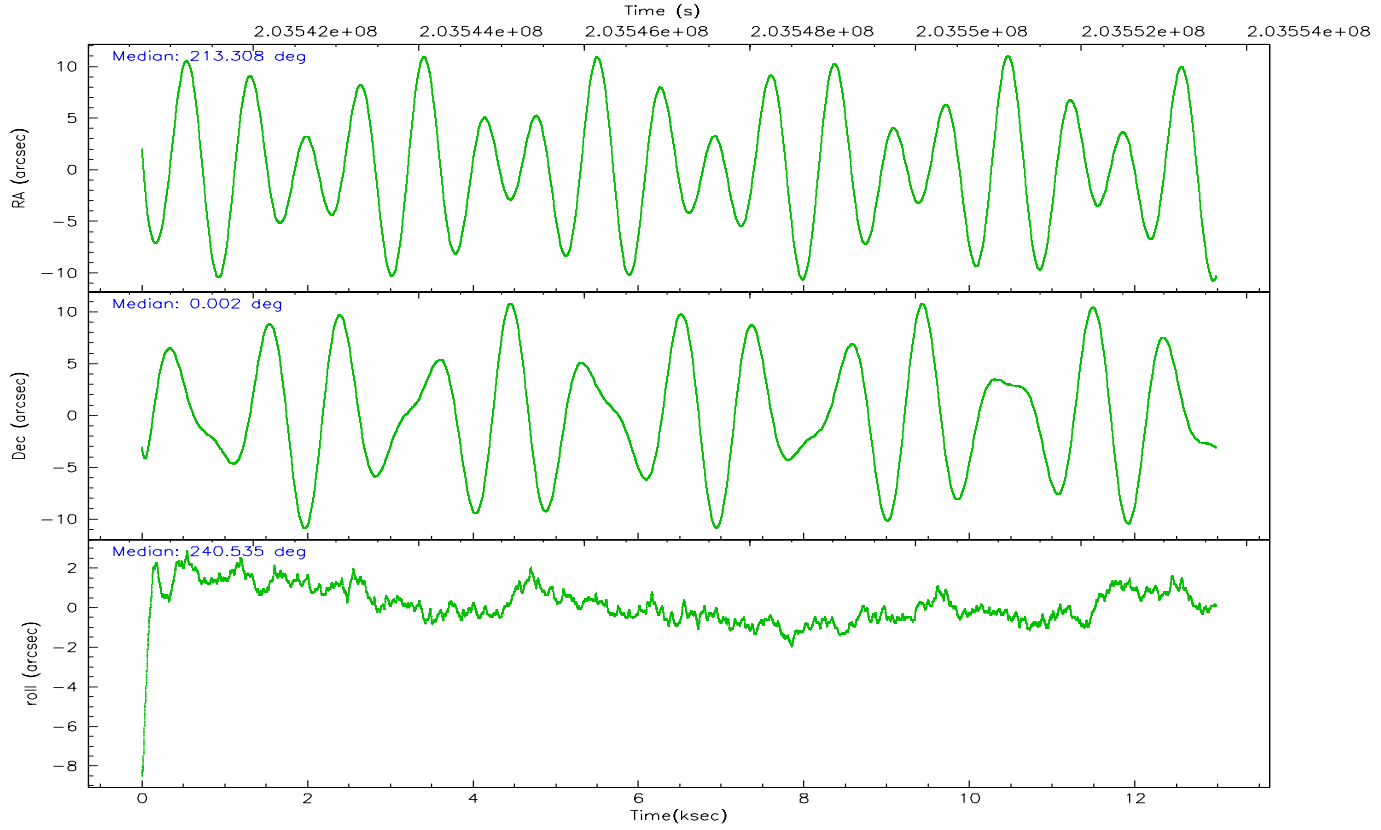
	<b>ccd 2</b>	<b>ccd 3</b>	<b>ccd 6</b>	<b>ccd 7</b>	<b>ccd 8</b>
grade 0 events	2828	2504	2841	2205	6828
	3%	3%	3%	2%	7%
grade 1 events	41	46	40	56	71
	0%	0%	0%	0%	0%
grade 2 events	1679	1514	1738	8619	4623
	2%	1%	2%	10%	4%
grade 3 events	802	830	888	2071	2418
	0%	1%	1%	2%	2%
grade 4 events	844	869	906	2035	2290
	1%	1%	1%	2%	2%
grade 5 events	2389	3011	2962	6393	4378
	2%	3%	3%	7%	4%
grade 6 events	1302	1407	1641	20729	5663
	1%	1%	2%	24%	5%
grade 7 events	70518	67312	67957	43072	71266
	87%	86%	86%	50%	73%

## 2.2 Compared Parameters

Parameter	Planned	Actual	Parameter	Planned	Actual
Instrument	ACIS	ACIS	Obspar format version number	6	6
Detector	ACIS-23678	ACIS-23678	Obspar file type	PREDICTED	ACTUAL
Grating	NONE	NONE	Obspar update status	NONE	UPDATED
Data mode	VFAINT	VFAINT	On-chip summing requested	N	N
Observation mode	POINTING	POINTING	Subarray requested	NONE	NONE
Pointing RA	213.306964	213.3075936974677	Alternating exposures requested	N	N
Pointing Dec	0.028662	0.001459457845035456	Primary exposure time	0.000000	3.1
Pointing Roll	240.381531	240.5381559675965			
SIM focus pos (mm)	-0.684267	-0.6828225247311905			
SIM defocus (mm)	0	0.001444936568705701			
SIM translation stage pos (mm)	-190.132523	-190.1425803651734			
SIM translation stage offset (mm)	0	0.01005778216563158			
Observation start time	203541045.184000	203540014.68558			
Observation start date	2004-06-13T19:09:41	2004-06-13T18:53:34			
Observation end time	203553639.184000	203553862.43619			
Observation end date	2004-06-13T22:39:35	2004-06-13T22:44:22			
Read mode	TIMED	TIMED			

## 2.3 Aspect





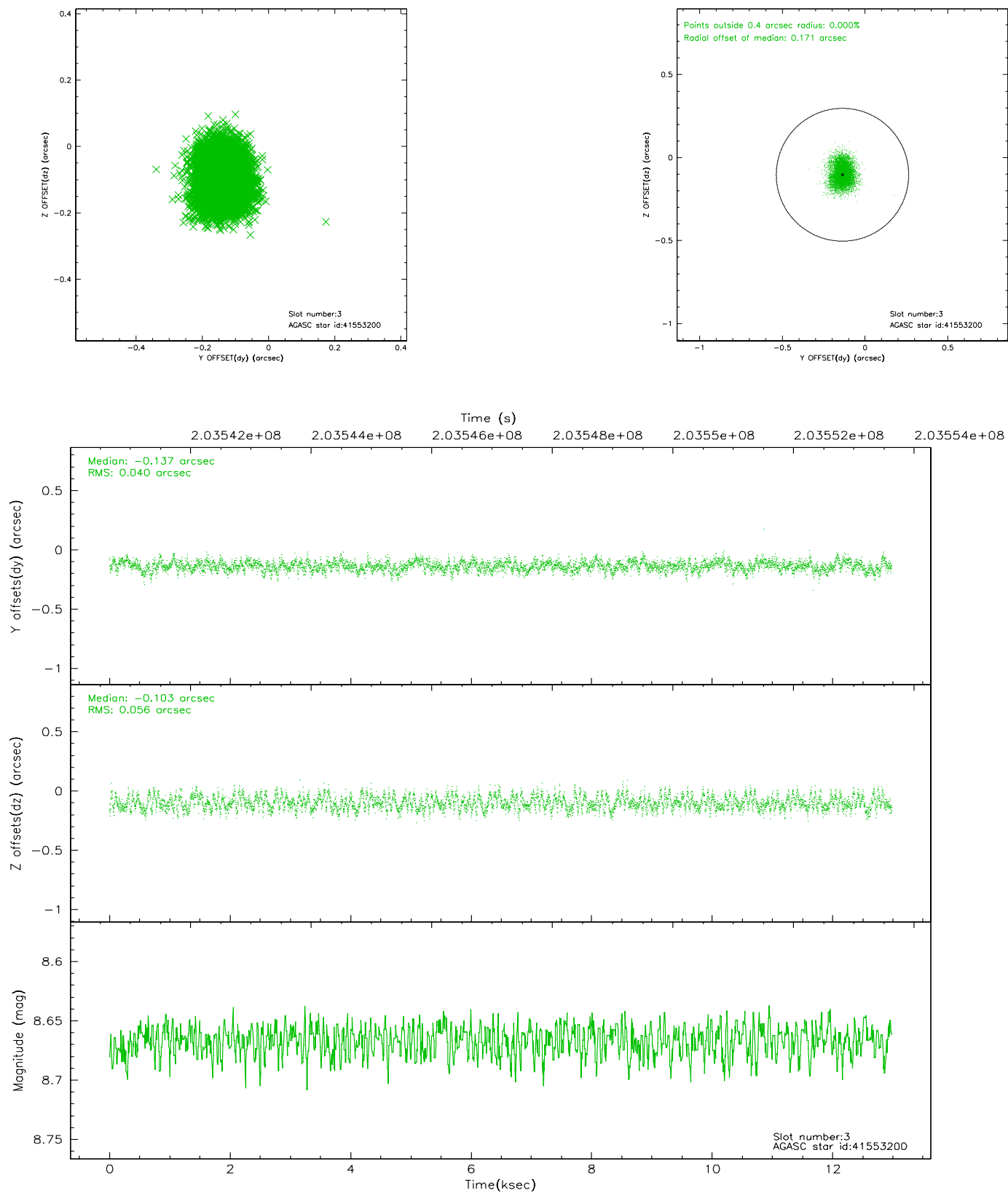
### Slot Statistics

slot	status	id	mag	n_pts	med_dy	med_dz	dr1	dr2	ra	dec	mean_y	mean_z
0	FID	ACIS-S-1	7.18	3167	0.009	0.009	0.007	0.012	0.000000	0.000000	936.17	-1726.43
1	FID	ACIS-S-5	7.24	3167	-0.029	0.017	0.007	0.012	0.000000	0.000000	-1812.66	170.73
2	FID	ACIS-S-6	7.35	3167	-0.001	-0.015	0.007	0.012	0.000000	0.000000	401.30	815.09
3	GUIDE	41553200	8.67	6335	-0.137	-0.103	0.074	0.117	212.949591	0.706619	-1485.58	-2324.65
4	GUIDE	652214552	9.21	6329	0.311	-0.108	0.088	0.143	212.565488	-0.299387	2347.07	-1737.34
5	GUIDE	652215704	9.12	6334	0.066	0.189	0.092	0.144	213.594661	-0.601169	1459.97	2021.18
6	GUIDE	41553120	9.41	6328	-0.057	-0.022	0.075	0.124	213.387100	0.738557	-2363.72	-1011.91
7	GUIDE	41553232	8.86	6329	-0.182	0.039	0.067	0.107	213.424550	0.711363	-2345.90	-846.77

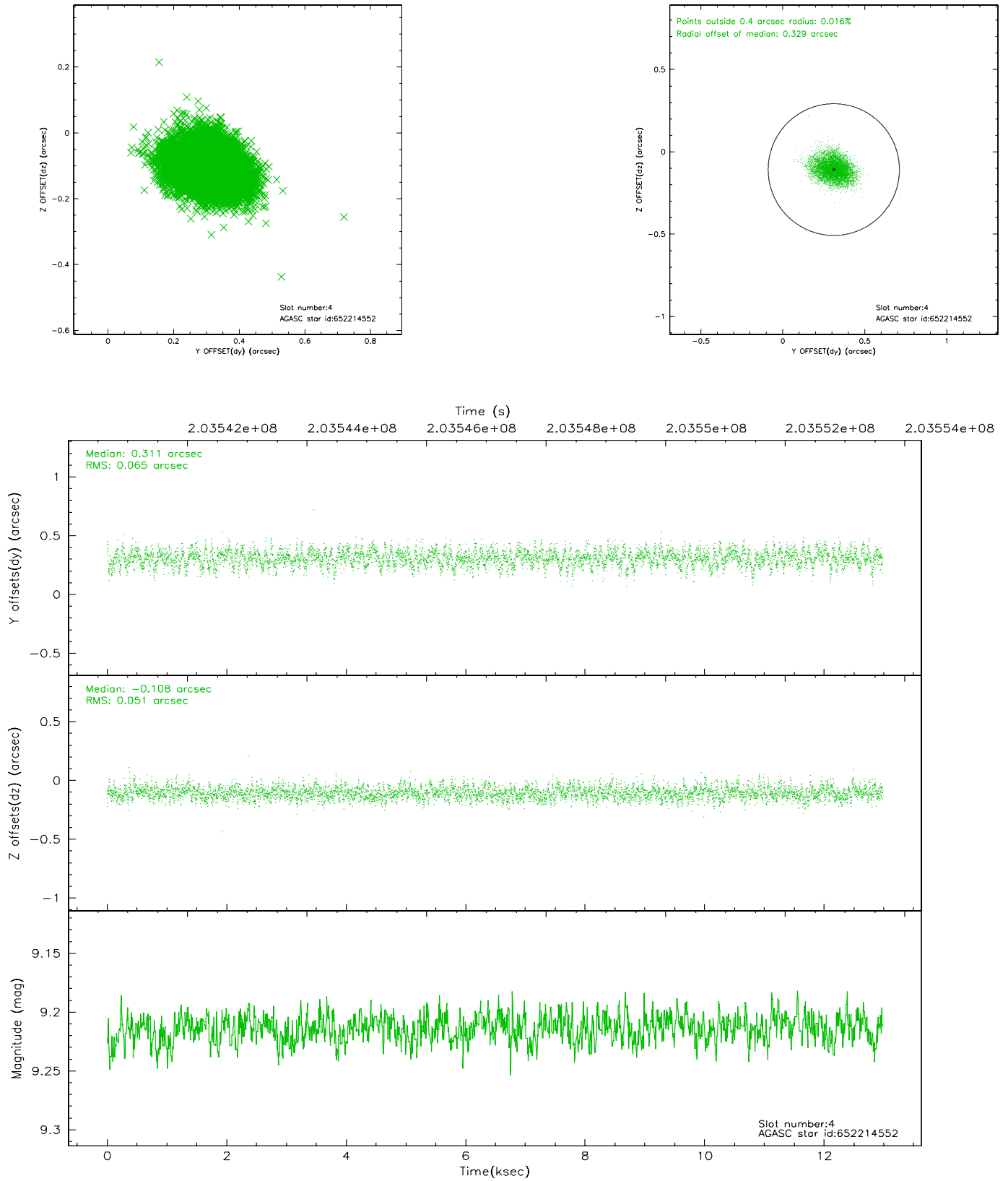


## 2.4 Star Slots

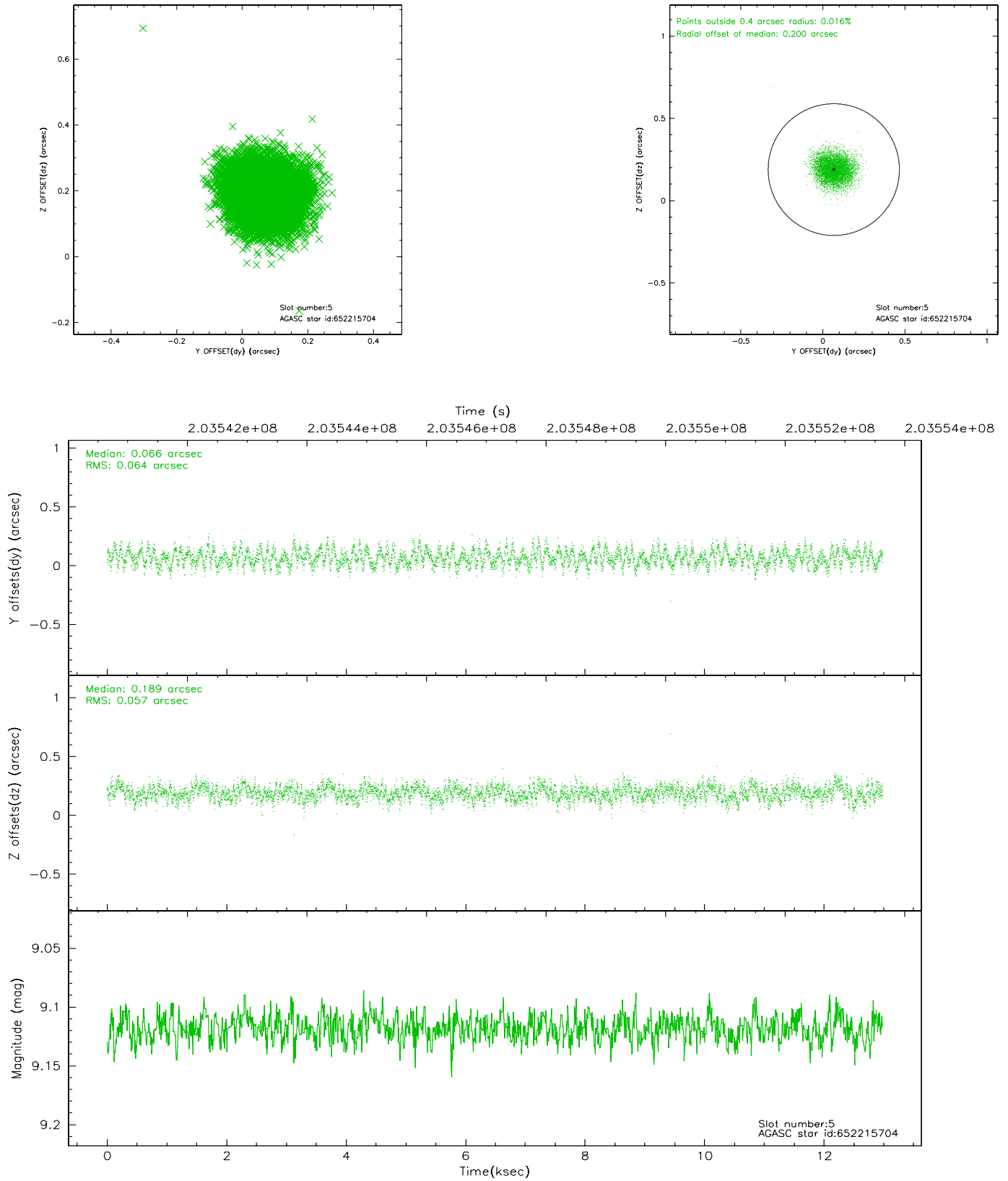
### 2.4.1 Slot 3



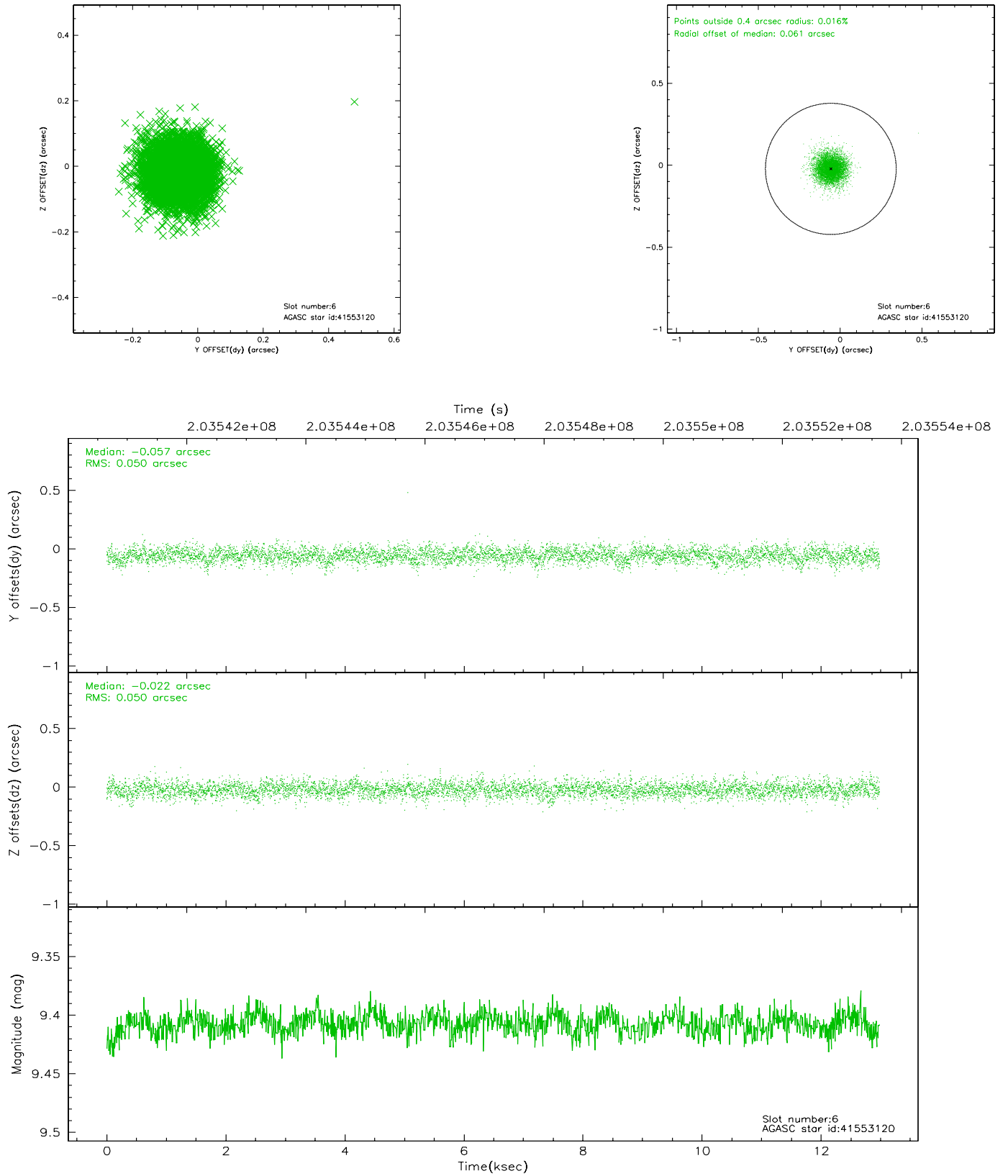
## 2.4.2 Slot 4



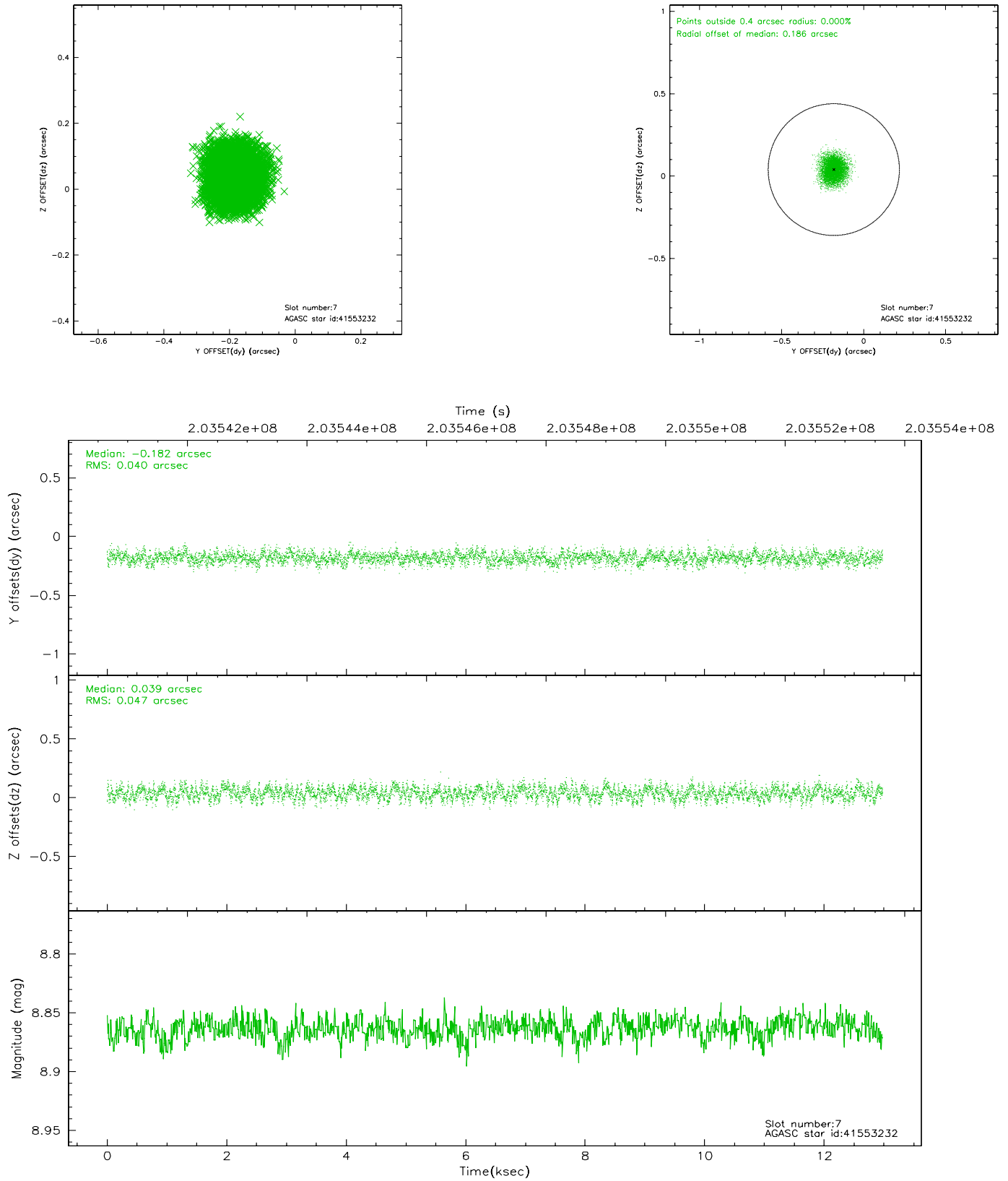
### 2.4.3 Slot 5



## 2.4.4 Slot 6

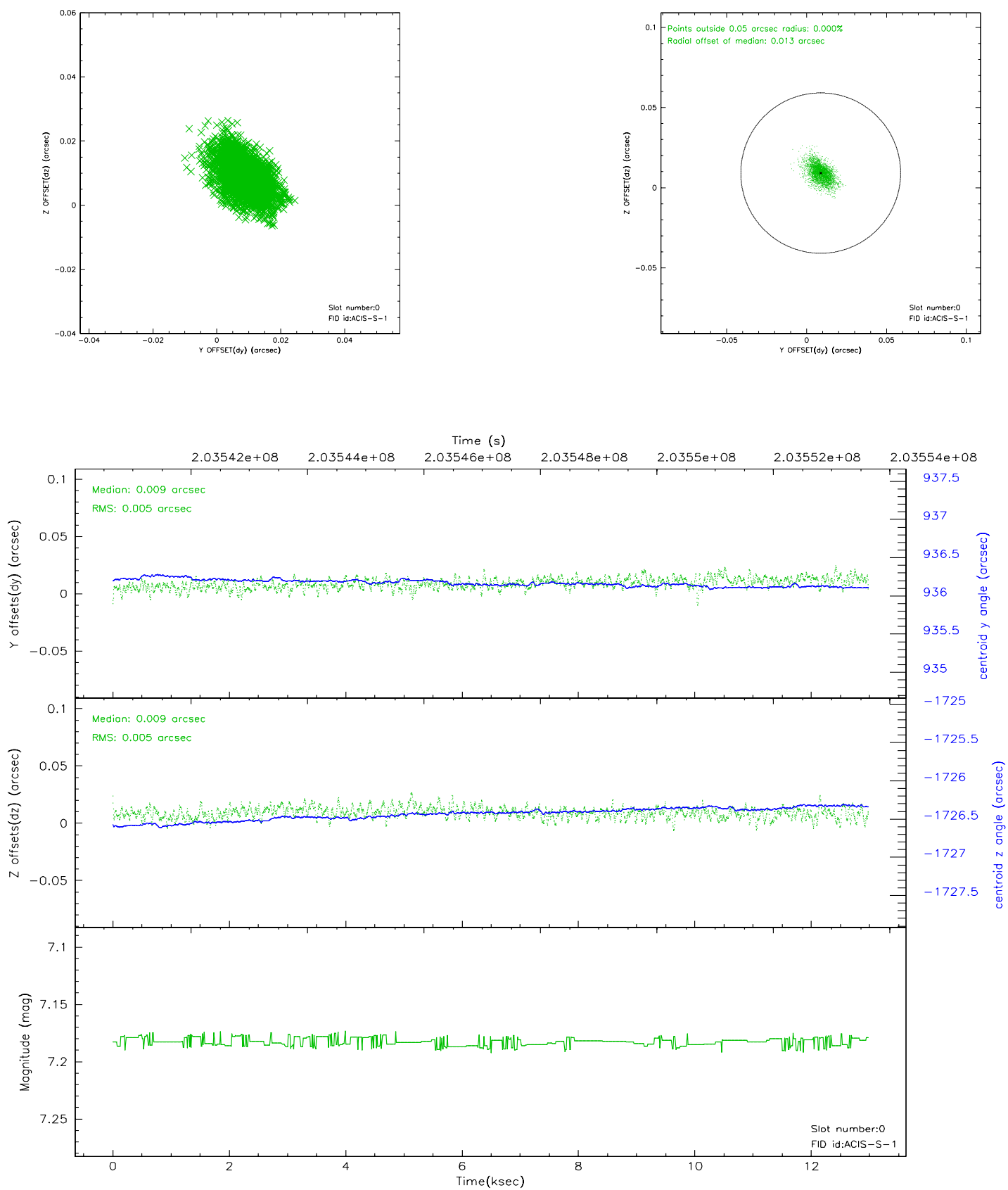


## 2.4.5 Slot 7

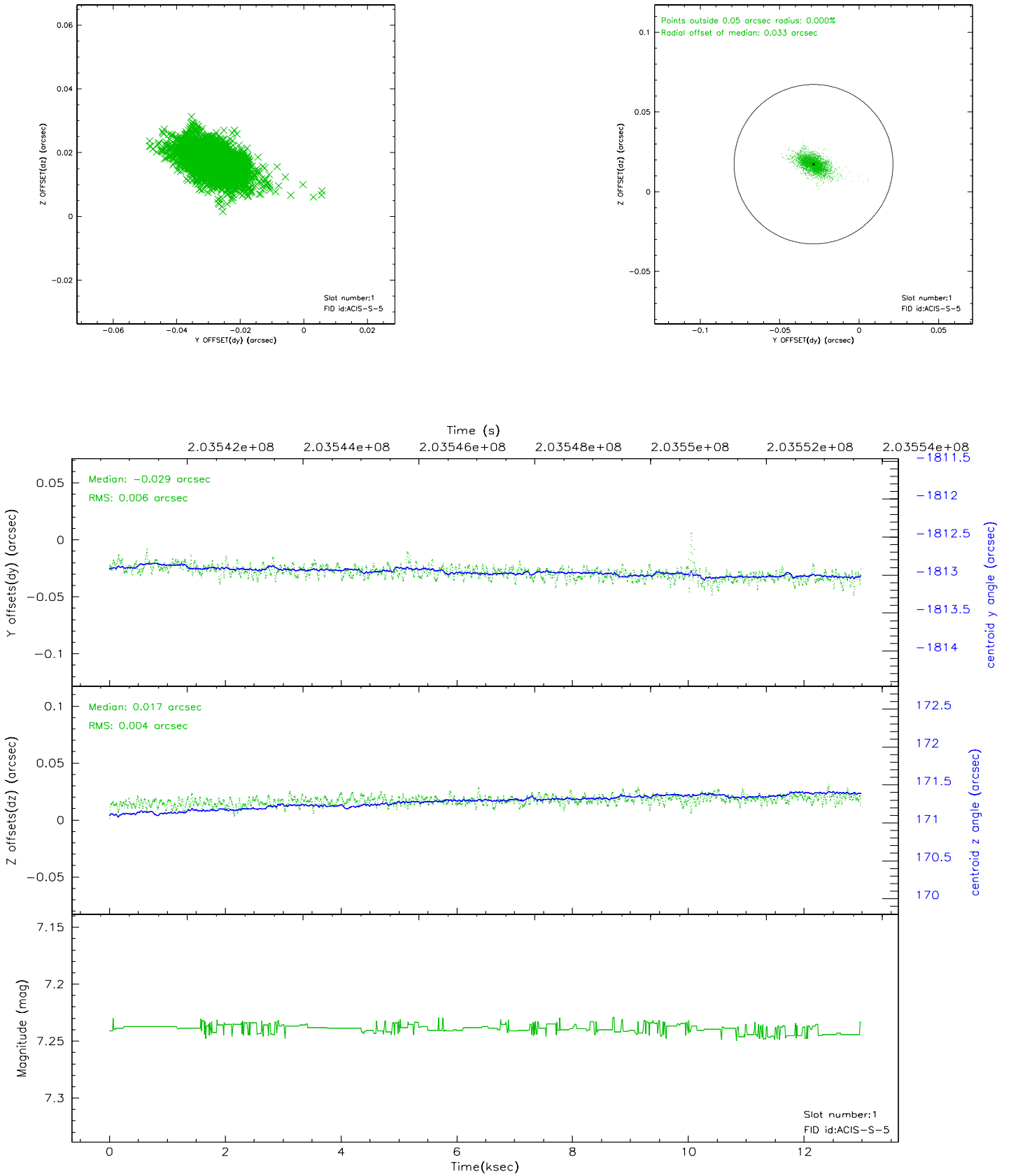


## 2.5 FID Slots

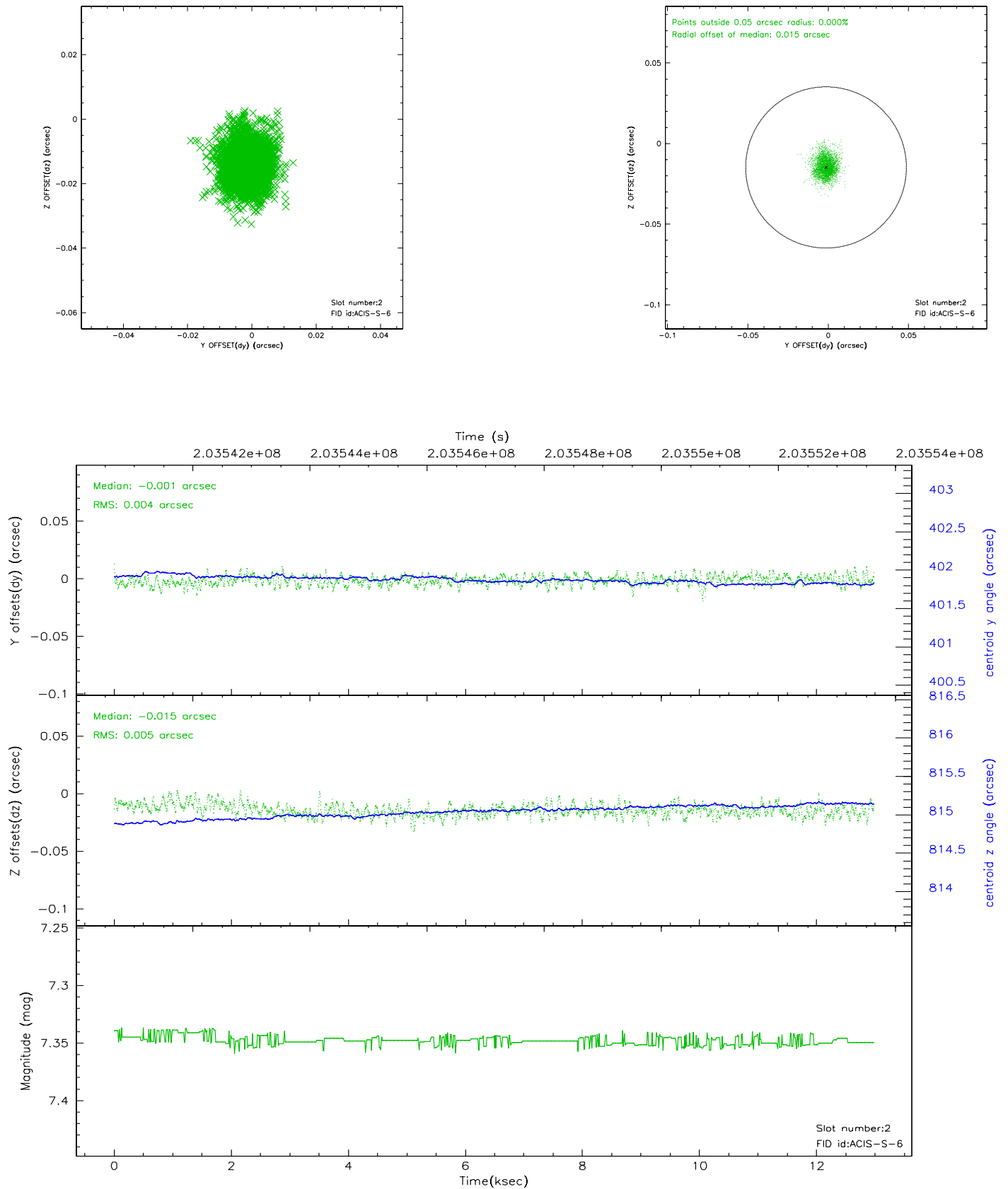
### 2.5.1 Slot 0



## 2.5.2 Slot 1



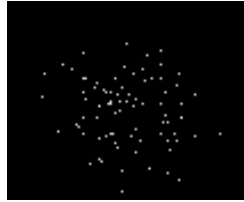
### 2.5.3 Slot 2





### 3 Point Sources

12.26 arcmin



## A Summary

### A.1 Status

V&V Scientist	Jen Lauer
V&V Date (YYYY-MM-DD)	2006.05.01
V&V Edition	1
V&V Disposition and Status	OK
V&V Charge Time	12.632

### A.2 Comments