

V&V Reference Report

L2 ASCDS Version : 7.6.7.1

Observation 4763 - L2 Version 001
Chandra X-Ray Center

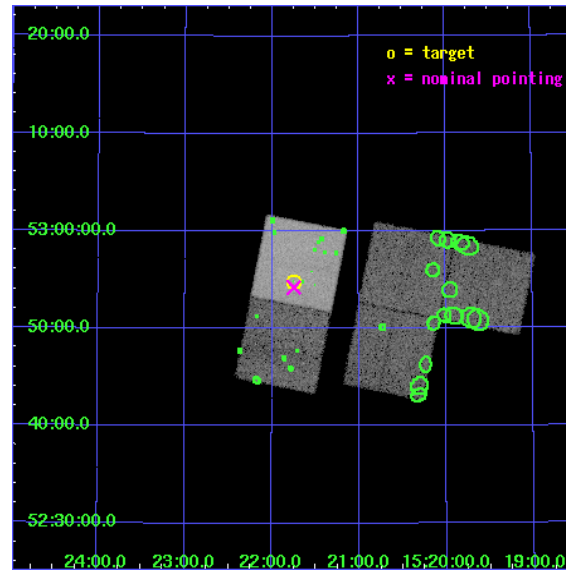
L2 Processing Date : Apr 19 2006

Contents

1	Front	2
2	OBI	3
2.1	OBI	3
2.1.1	Images	3
2.1.2	Bias	3
2.1.3	Parameters	4
2.1.4	Events	4
2.2	Compared Parameters	5
2.3	Aspect	6
2.4	Star Slots	9
2.4.1	Slot 3	9
2.4.2	Slot 4	10
2.4.3	Slot 5	11
2.4.4	Slot 6	12
2.4.5	Slot 7	13
2.5	FID Slots	14
2.5.1	Slot 0	14
2.5.2	Slot 1	15
2.5.3	Slot 2	16
3	Point Sources	17
A	Summary	18
A.1	Status	18
A.2	Comments	18

1 Front

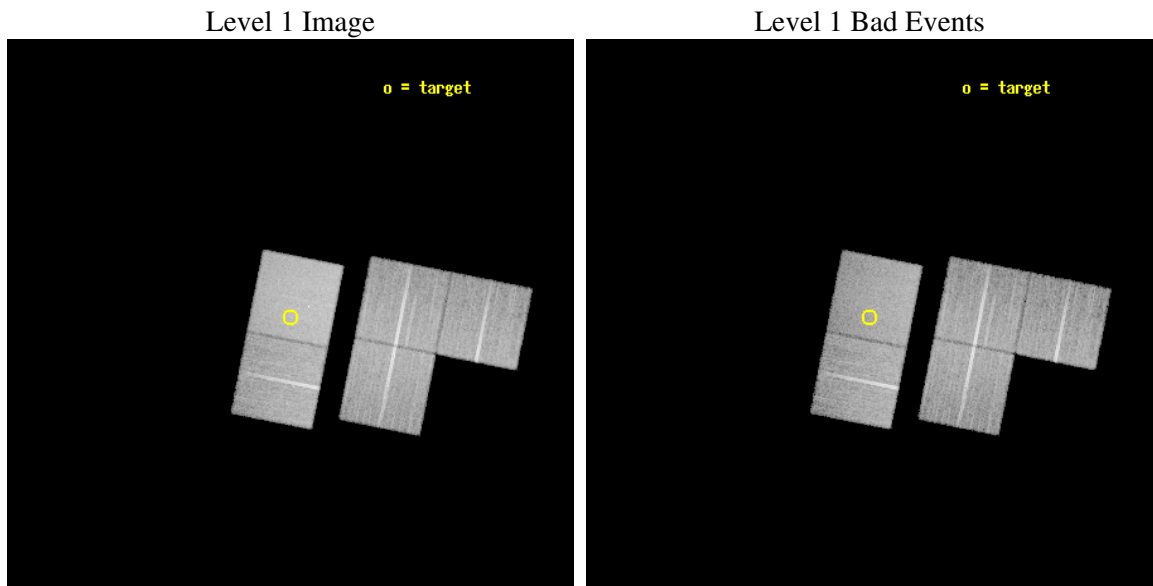
seq_num	700846
obs_id	4763
title	Lensed Views of Quasar Outflows
observer	Professor Gordon Garmire
object	SBS 1520+530
dtcycle	0
cycle	P
ra_targ	230.436667
dec_targ	52.9135
ra_nom	230.43698117715
dec_nom	52.903849225823
roll_nom	281.23867484242
revision	2
ontime	20177.899961203
livetime	19914.260843456
ontime1	20174.758971065
ontime2	20171.618040711
ontime3	20174.758990943
ontime6	20174.758971035
ontime7	20177.899961203
l2events	151696



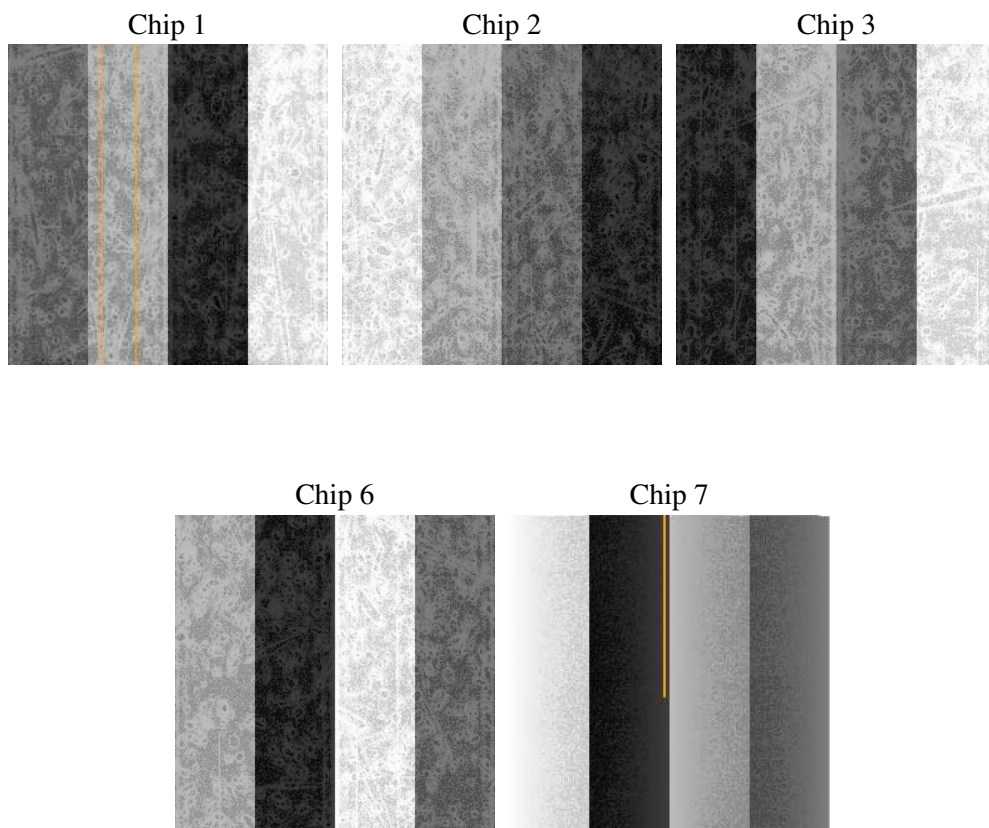
2 OBI

2.1 OBI

2.1.1 Images



2.1.2 Bias



2.1.3 Parameters

obi_num	3
ascdsver	7.6.7.1
caldbver	3.2.1
date	2006-04-19T05:26:09
revision	2

sched_exp_time	20000.000000
ontime	21767.15376997
ontime1	21764.012759954
ontime2	21760.871849477
ontime3	21764.012779832
ontime6	21764.012759924
ontime7	21767.15376997
l1events	874070

2.1.4 Events

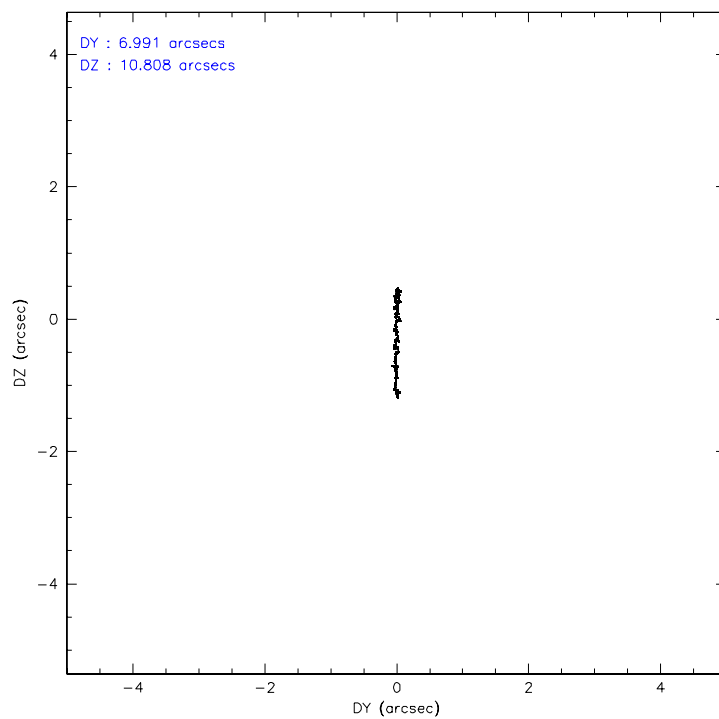
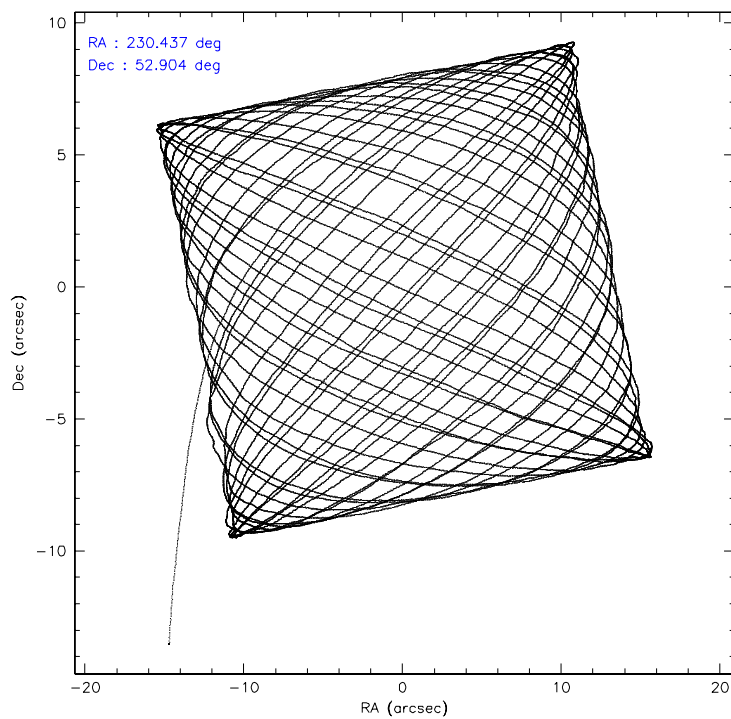
	ccd 1	ccd 2	ccd 3	ccd 6	ccd 7
level 1 events	152169	161960	163289	169003	227649
rejected events	131786	142747	144125	148617	143501
rejected %	86%	88%	88%	87%	63%

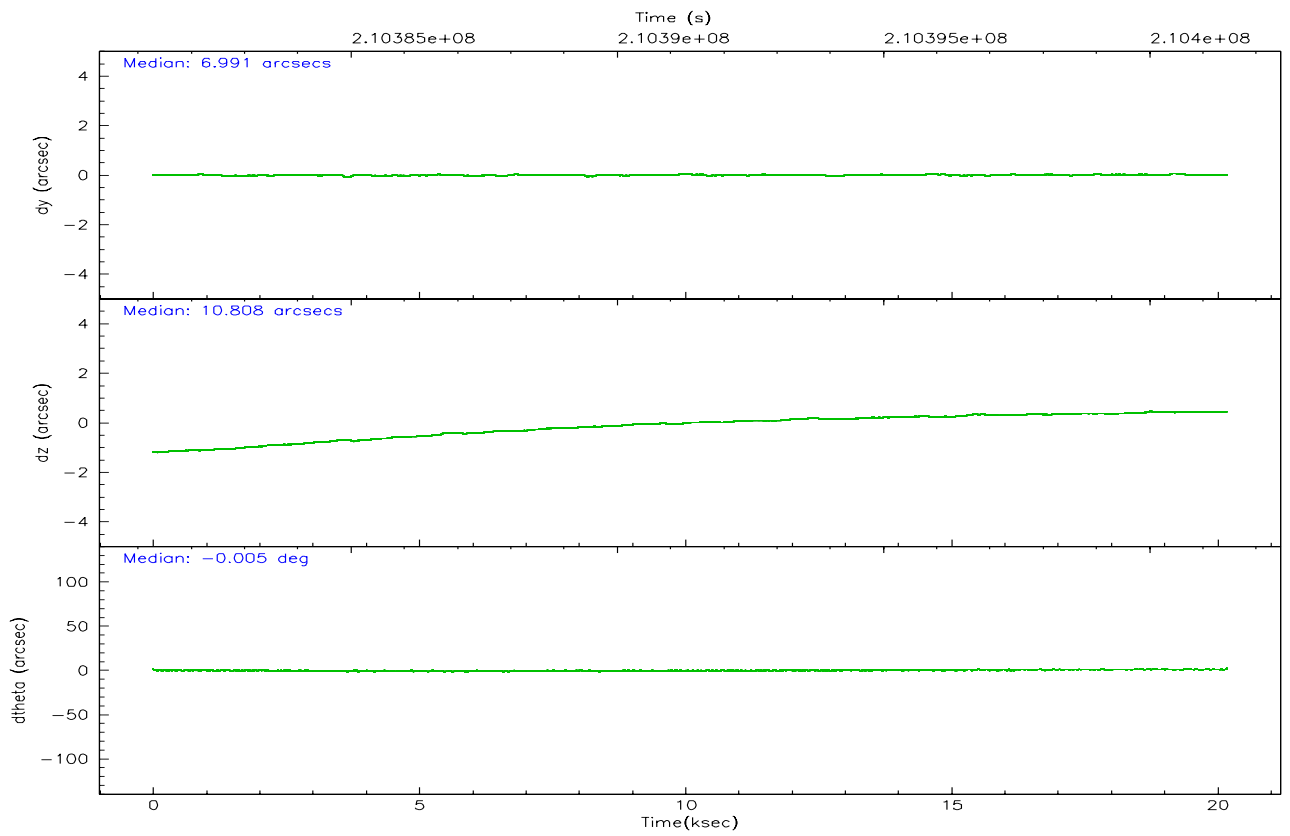
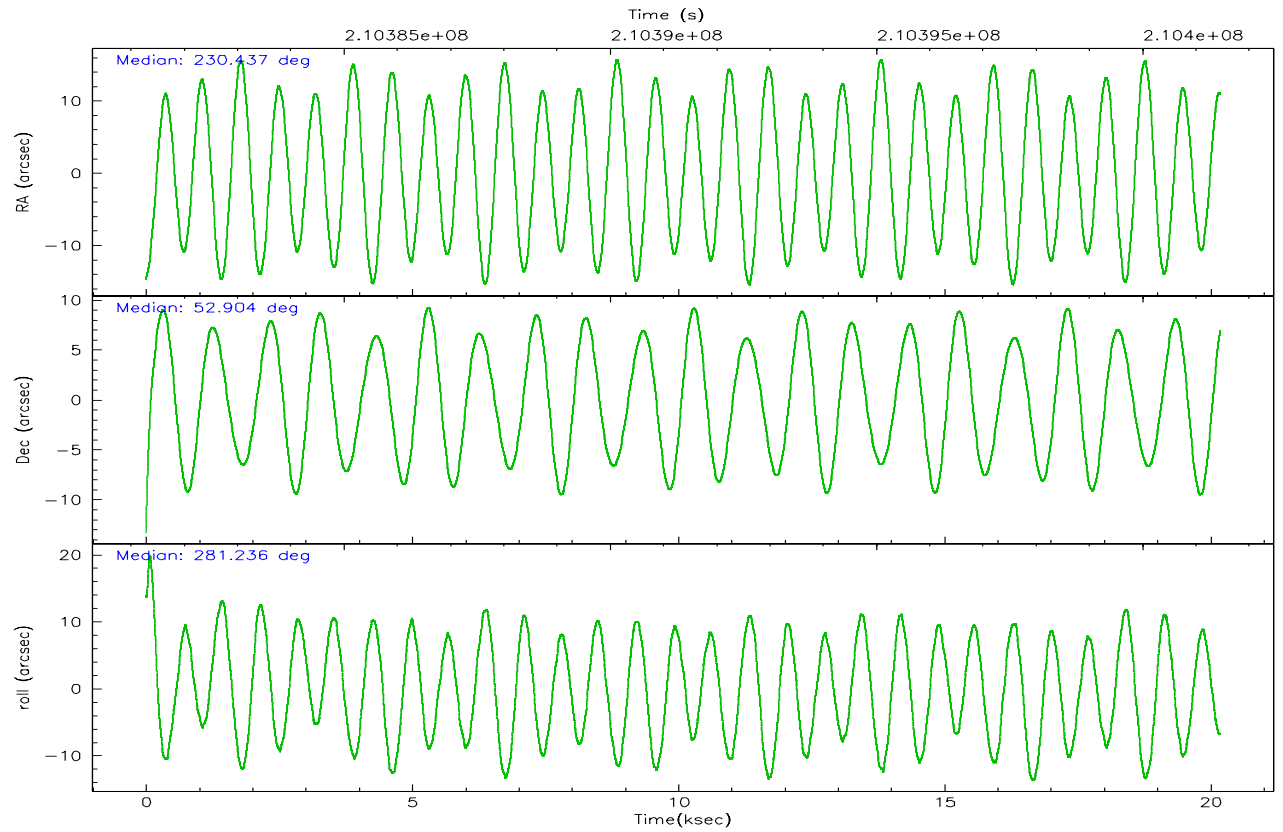
	ccd 1	ccd 2	ccd 3	ccd 6	ccd 7
grade 0 events	9052	9778	9362	9560	5585
	5%	6%	5%	5%	2%
grade 1 events	62	102	105	82	165
	0%	0%	0%	0%	0%
grade 2 events	4635	3958	3825	4399	22127
	3%	2%	2%	2%	9%
grade 3 events	2044	1863	1966	1966	4586
	1%	1%	1%	1%	2%
grade 4 events	2071	1873	1914	1902	4481
	1%	1%	1%	1%	1%
grade 5 events	6926	6285	7234	7519	14738
	4%	3%	4%	4%	6%
grade 6 events	4068	3152	3487	4011	53607
	2%	1%	2%	2%	23%
grade 7 events	123311	134949	135396	139564	122360
	81%	83%	82%	82%	53%

2.2 Compared Parameters

Parameter	Planned	Actual	Parameter	Planned	Actual
Instrument	ACIS	ACIS	Obspar format version number	6	6
Detector	ACIS-12367	ACIS-12367	Obspar file type	PREDICTED	ACTUAL
Grating	NONE	NONE	Obspar update status	NONE	UPDATED
Data mode	VFAINT	VFAINT	On-chip summing requested	N	N
Observation mode	POINTING	POINTING	Subarray requested	NONE	NONE
Pointing RA	230.406751	230.4369811771488	Alternating exposures requested	N	N
Pointing Dec	52.924064	52.90384922582335	Primary exposure time	0.000000	3.1
Pointing Roll	281.106170	281.2386748424159			
SIM focus pos (mm)	-0.684267	-0.6828225247311905			
SIM defocus (mm)	0	0.001444936568705701			
SIM translation stage pos (mm)	-190.132523	-190.1400660498719			
SIM translation stage offset (mm)	0	0.00754346686406393			
Observation start time	210381454.184000	210379663.68937			
Observation start date	2004-08-31T23:16:30	2004-08-31T22:47:43			
Observation end time	210401454.184000	210401984.60286			
Observation end date	2004-09-01T04:49:50	2004-09-01T04:59:44			
Read mode	TIMED	TIMED			

2.3 Aspect



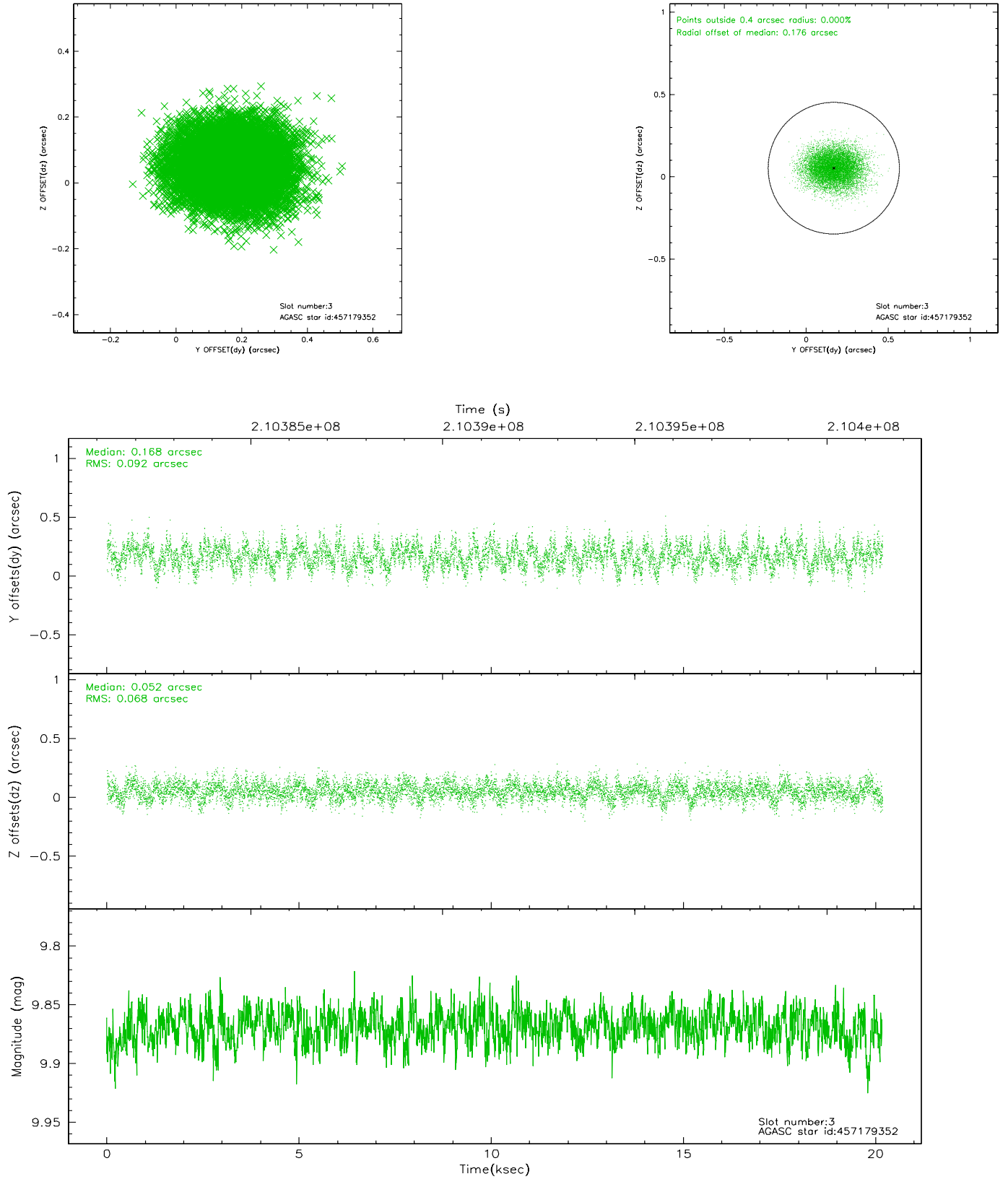


Slot Statistics

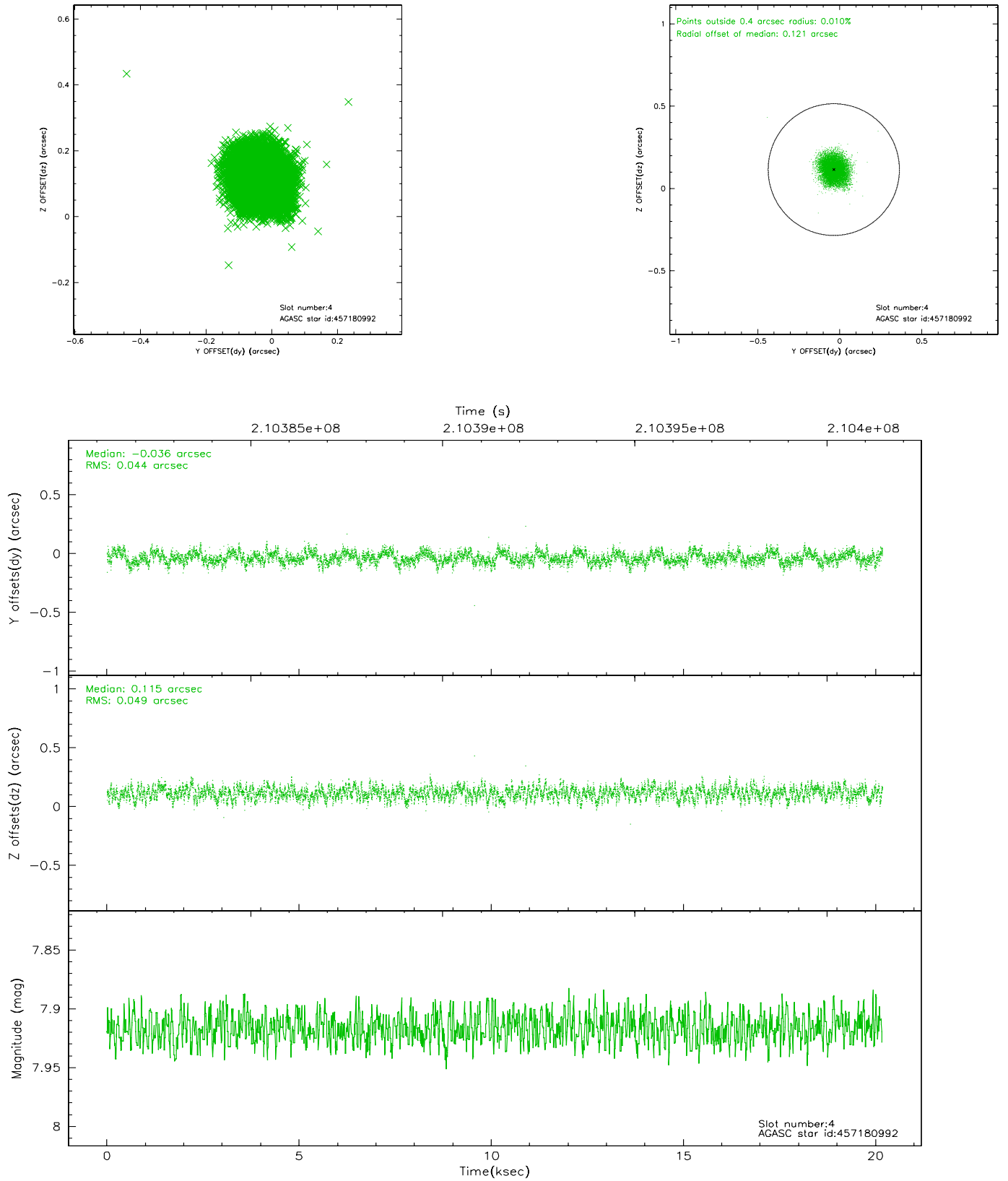
slot	status	id	mag	n_pts	med_dy	med_dz	dr1	dr2	ra	dec	mean_y	mean_z
0	FID	ACIS-S-2	7.10	4923	-0.041	0.008	0.011	0.018	0.000000	0.000000	-759.75	-1731.93
1	FID	ACIS-S-4	7.20	4921	0.036	0.018	0.012	0.018	0.000000	0.000000	2153.49	176.42
2	FID	ACIS-S-5	7.23	4923	-0.026	-0.016	0.008	0.016	0.000000	0.000000	-1812.38	170.20
3	GUIDE	457179352	9.87	9836	0.168	0.052	0.122	0.198	231.588393	52.490307	2010.74	2245.30
4	GUIDE	457180992	7.92	9846	-0.036	0.115	0.071	0.112	230.362137	52.344454	2028.98	-497.76
5	GUIDE	457181616	8.84	9842	-0.014	-0.003	0.073	0.116	229.954323	52.287535	2053.79	-1417.93
6	GUIDE	506994248	8.26	9844	-0.126	-0.159	0.067	0.107	230.374449	53.063992	-507.44	28.33
7	GUIDE	506993752	9.81	9841	0.006	-0.001	0.128	0.205	230.957817	53.653149	-2353.42	1660.39

2.4 Star Slots

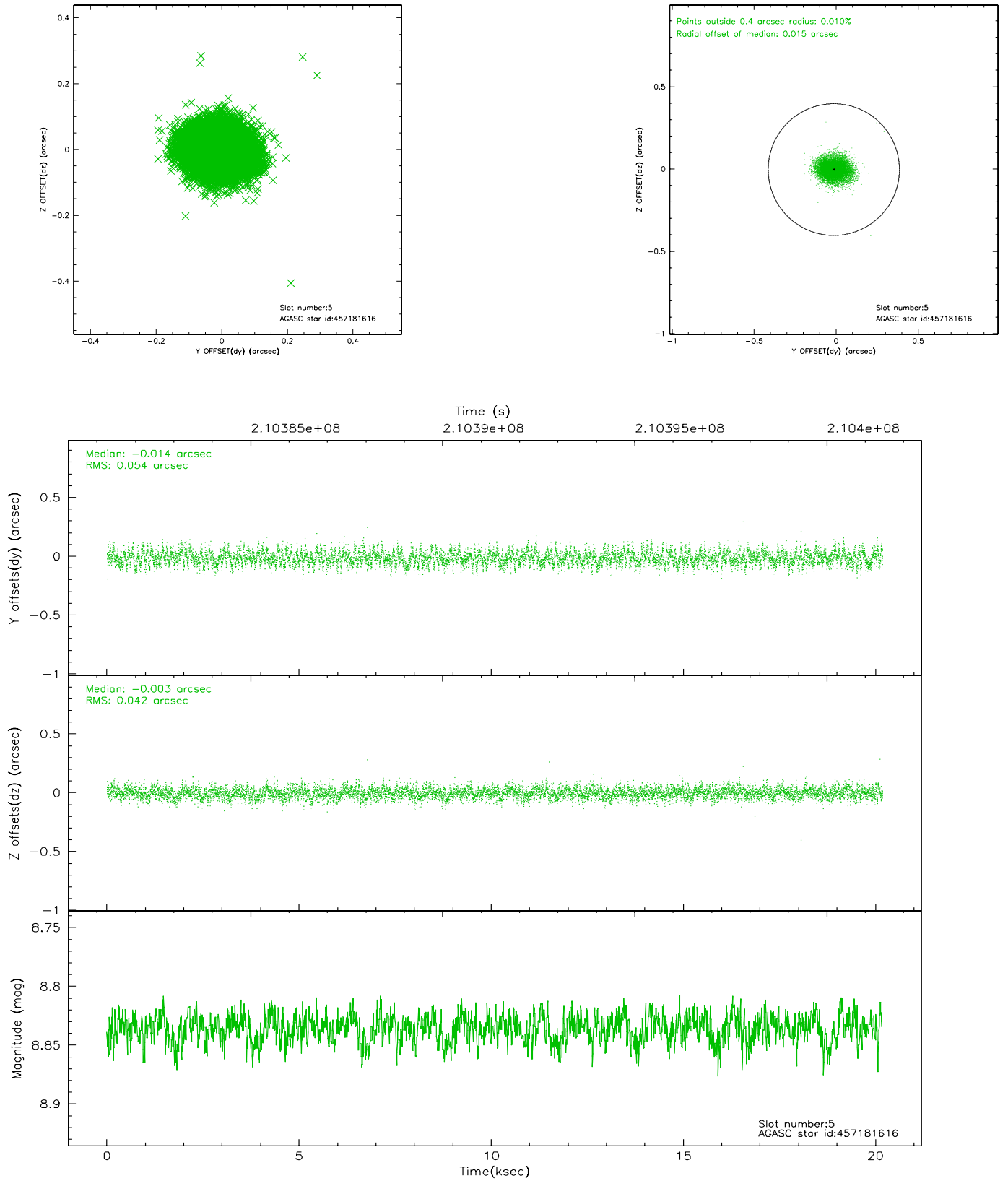
2.4.1 Slot 3



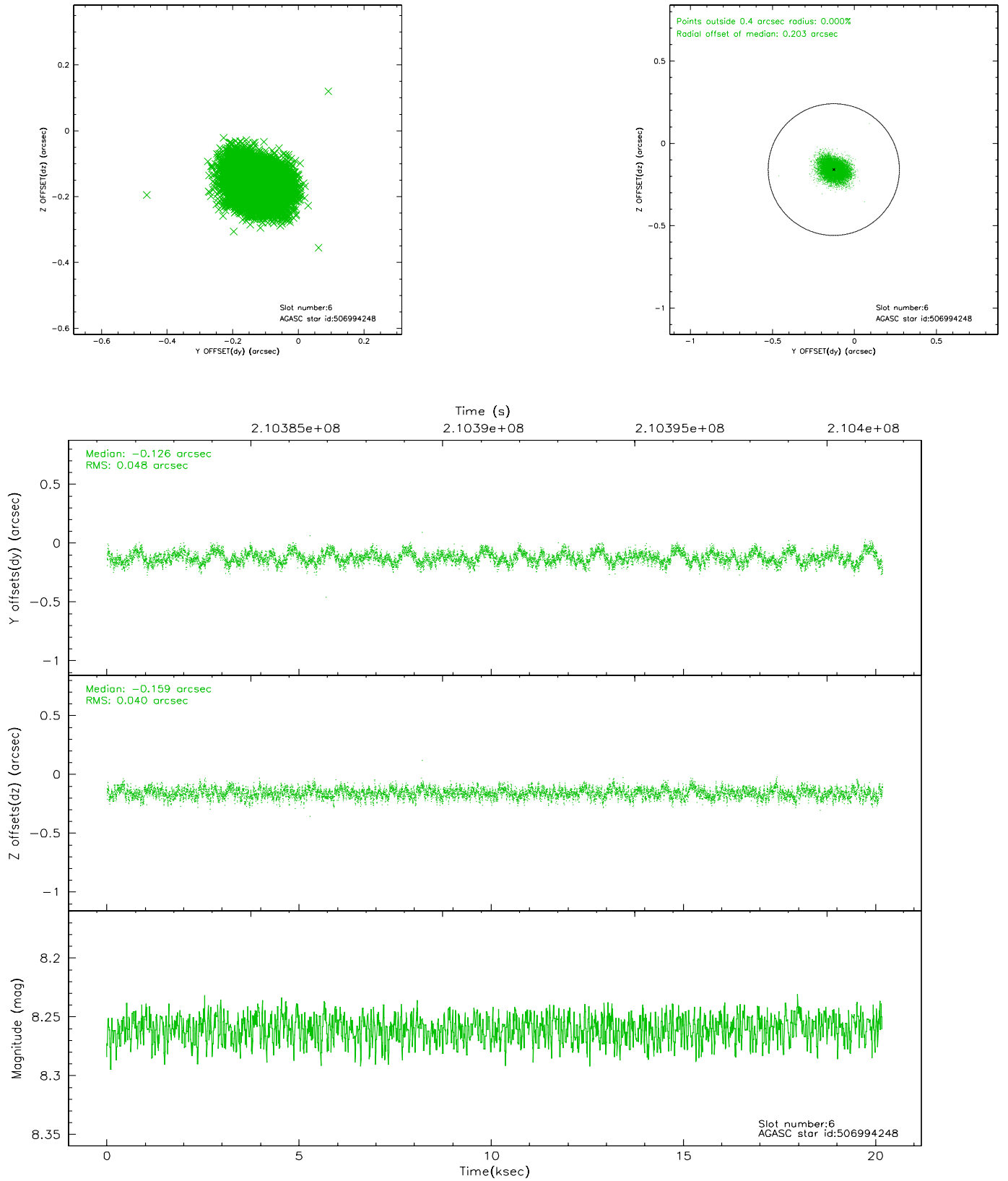
2.4.2 Slot 4



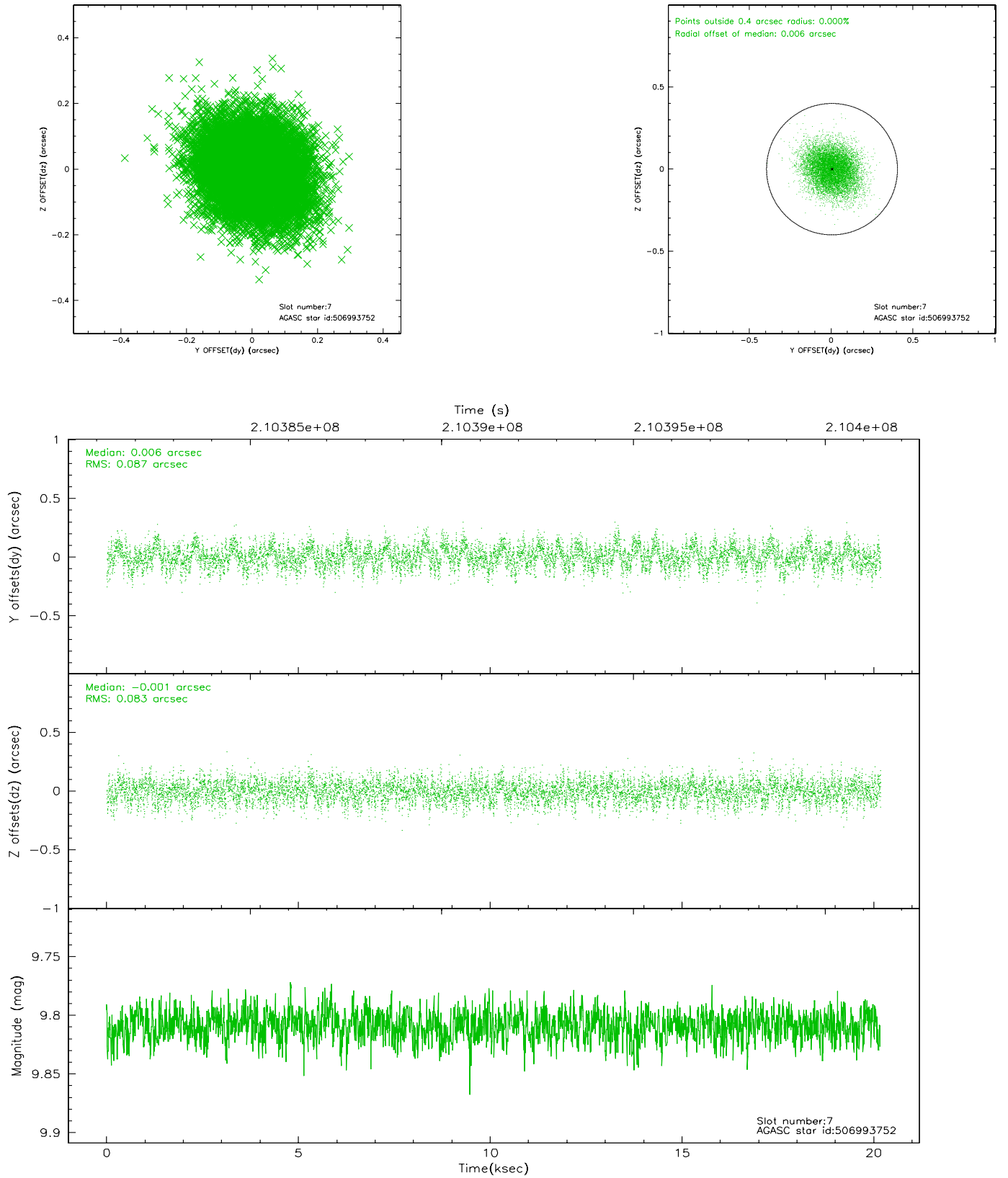
2.4.3 Slot 5



2.4.4 Slot 6

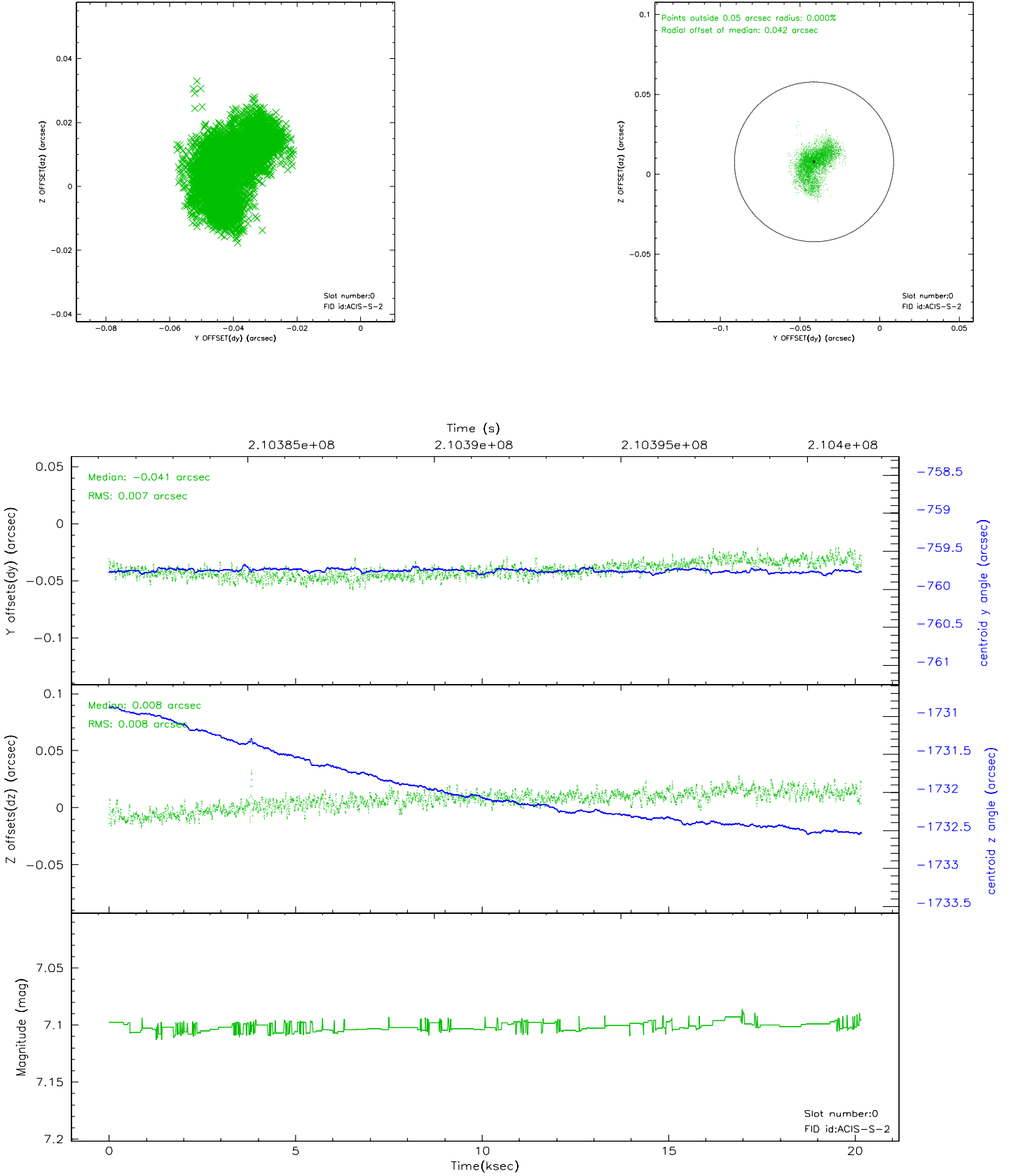


2.4.5 Slot 7

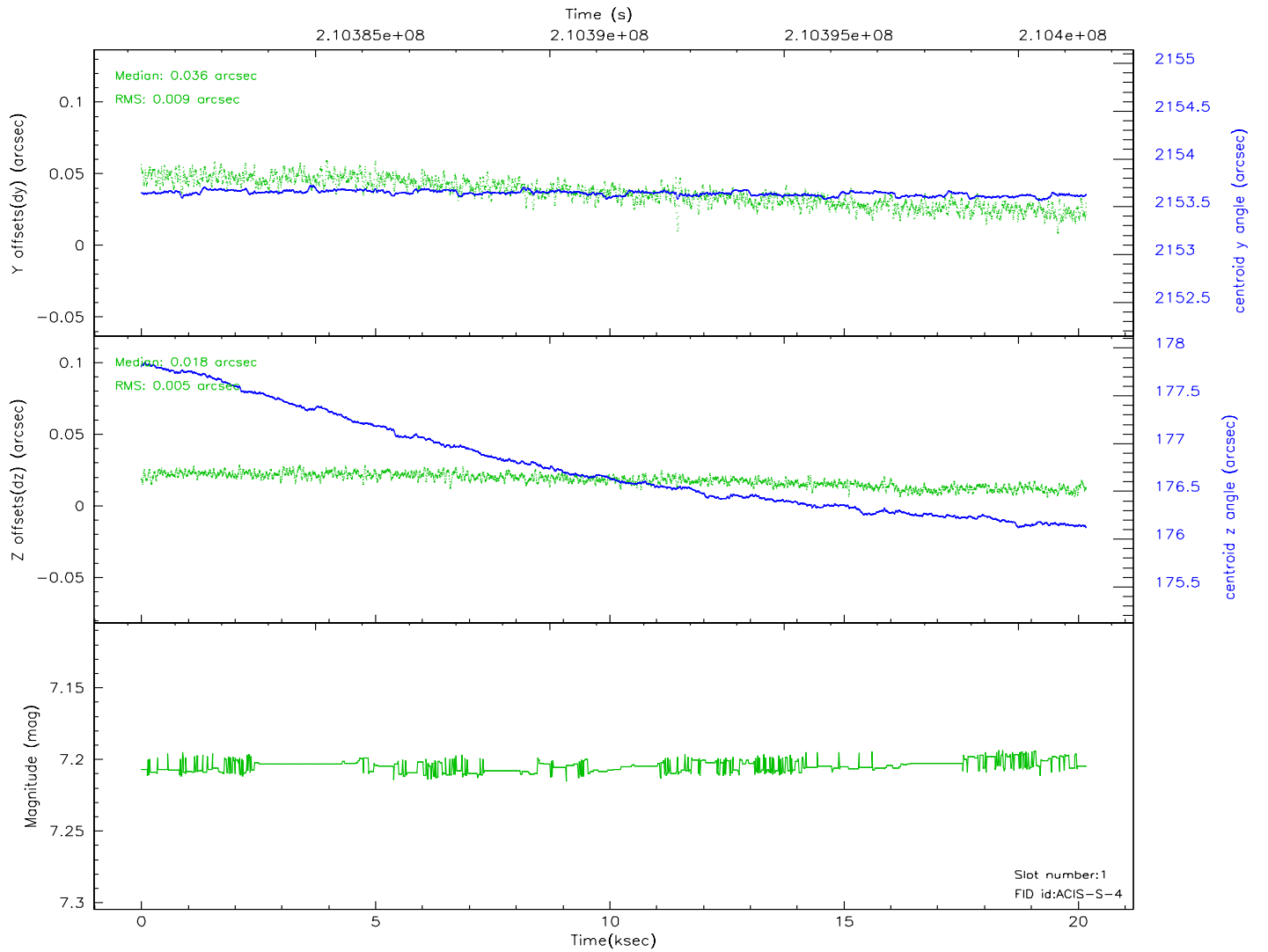
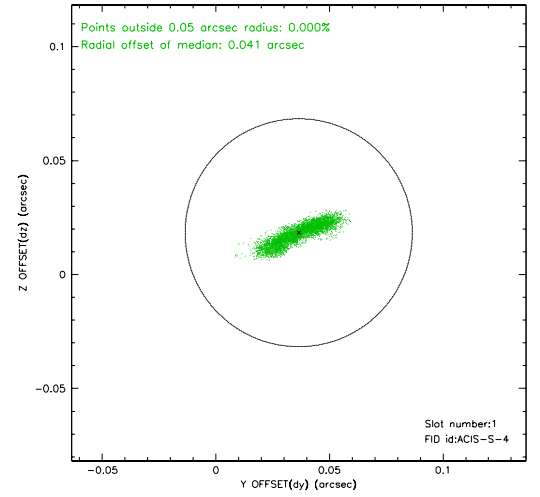
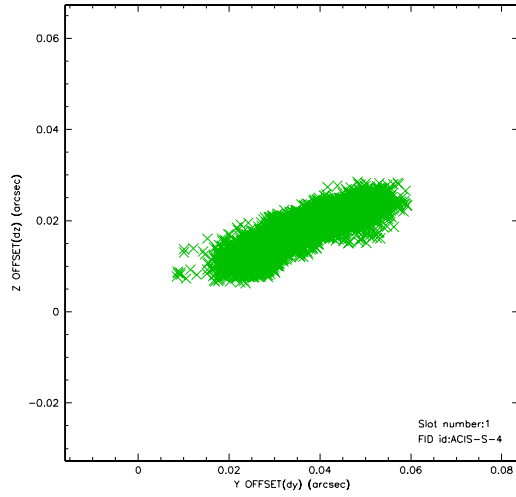


2.5 FID Slots

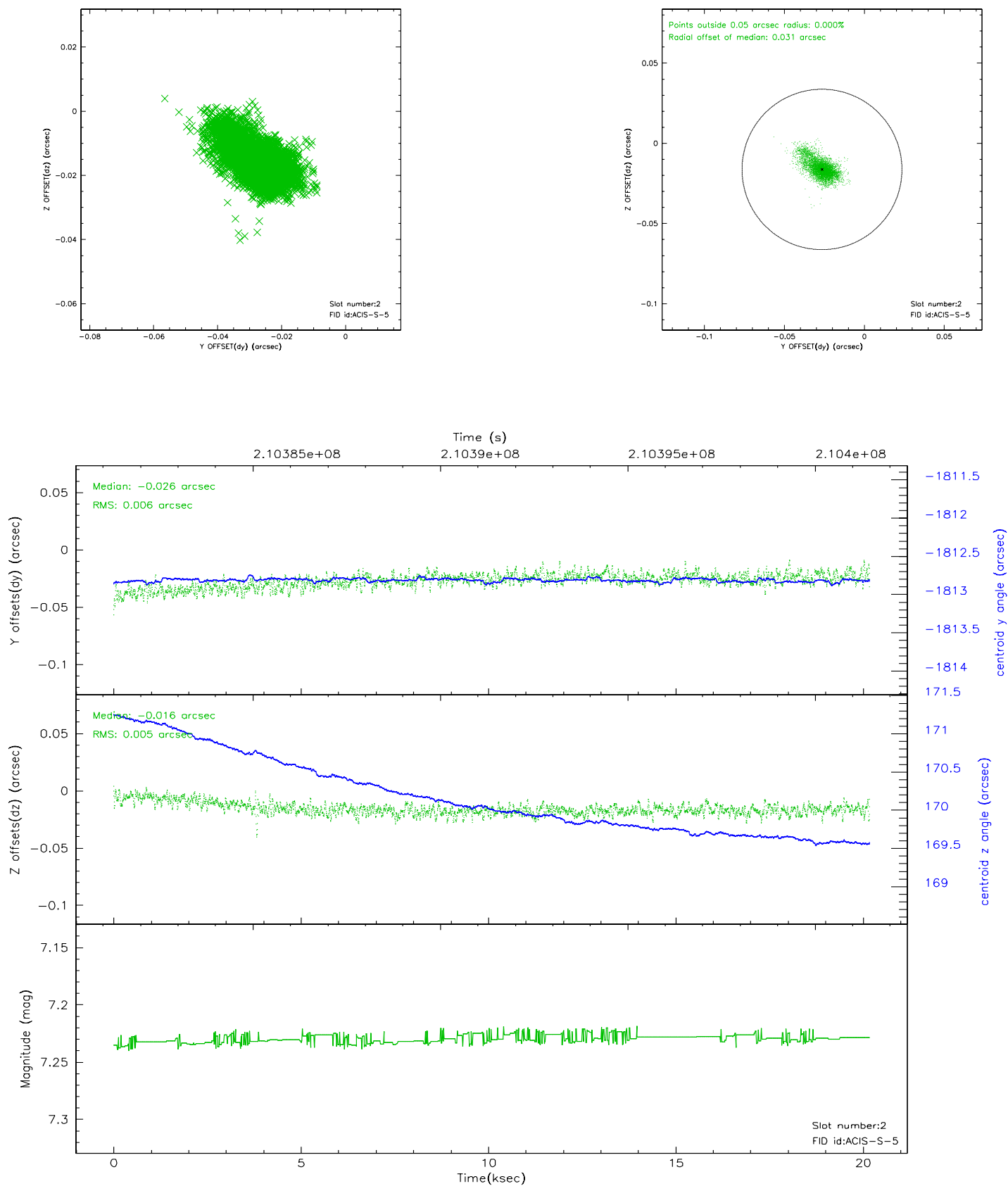
2.5.1 Slot 0



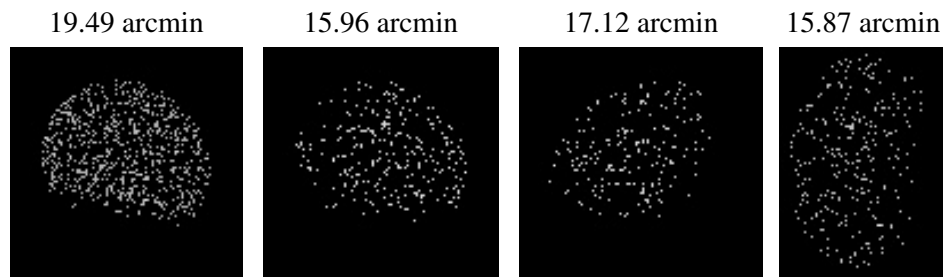
2.5.2 Slot 1



2.5.3 Slot 2



3 Point Sources



A Summary

A.1 Status

V&V Scientist	Jen Lauer
V&V Date (YYYY-MM-DD)	2006.04.19
V&V Edition	1
V&V Disposition and Status	OK
V&V Charge Time	20.177

A.2 Comments