

V&V Reference Report

L2 ASCDS Version : 8.4.5

Observation 4743 - L2 Version 3
Chandra X-Ray Center

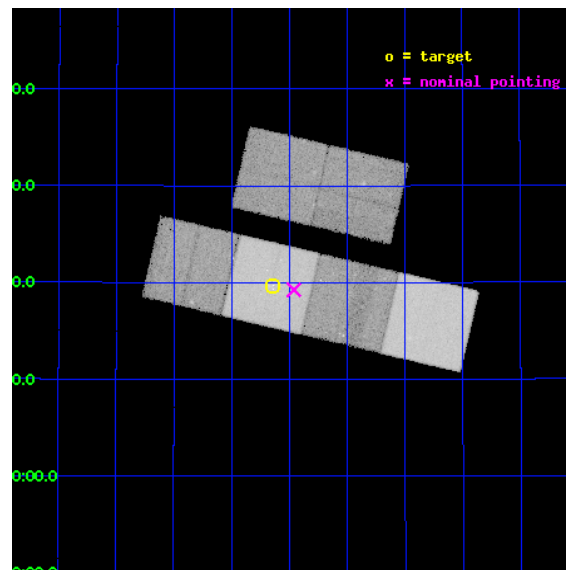
L2 Processing Date : Nov 14 2012

Contents

1	Front	2
2	OBI	3
2.1	OBI	3
2.1.1	Images	3
2.1.2	Bias	3
2.1.3	Parameters	4
2.1.4	Events	4
2.2	Compared Parameters	5
2.3	Aspect	6
2.4	Star Slots	9
2.4.1	Slot 3	9
2.4.2	Slot 4	10
2.4.3	Slot 5	11
2.4.4	Slot 6	12
2.4.5	Slot 7	13
2.5	FID Slots	14
2.5.1	Slot 0	14
2.5.2	Slot 1	15
2.5.3	Slot 2	16
A	Summary	17
A.1	Status	17
A.2	Comments	17

1 Front

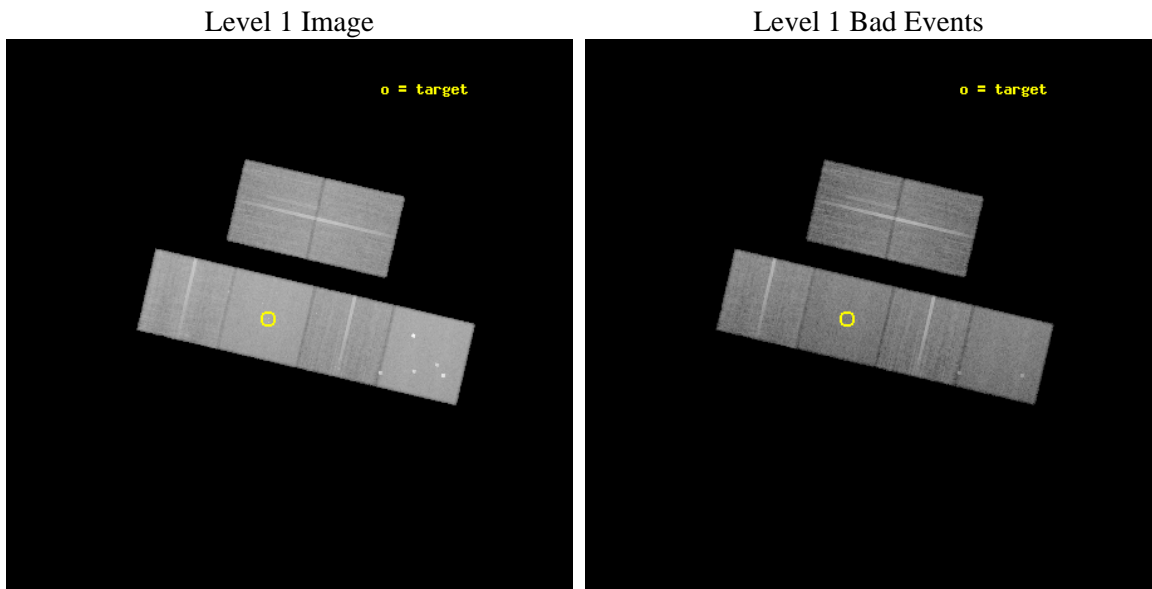
seq_num	600398	Sequence number
obs_id	4743	Observation id
title	The discrete X-ray source populations in an age sequence of nearby starburst galaxies	Proposal title
observer	Dr Andreas Zezas	Principal investigator
object	NGC4214	Source name
dtcycle	0	
cycle	P	events from which exps? Prim/Second/Both
ra_targ	183.912083	Observer's specified target RA [deg]
dec_targ	36.327778	Observer's specified target Dec [deg]
ra_nom	183.86540486177	Nominal RA [deg]
dec_nom	36.320850204537	Nominal Dec [deg]
roll_nom	193.12442107242	Nominal Roll [deg]
revision	3	Processing version of data
ontime	27557.161315113	Sum of GTIs [s]
livetime	27208.215945611	Livetime [s]
ontime2	27557.202355117	Sum of GTIs [s]
ontime3	27553.797214806	Sum of GTIs [s]
ontime5	27557.12027511	Sum of GTIs [s]
ontime6	27557.079235107	Sum of GTIs [s]
ontime7	27557.161315113	Sum of GTIs [s]
ontime8	27553.756105214	Sum of GTIs [s]
l2events	397669	Number of level 2 events



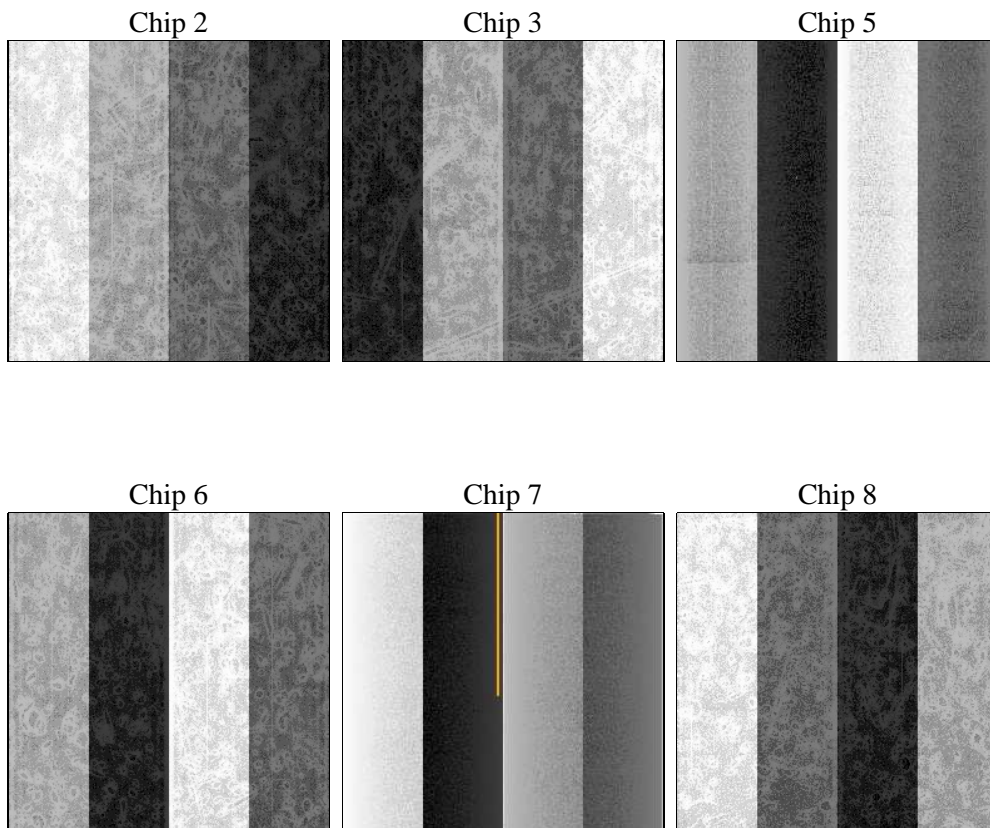
2 OBI

2.1 OBI

2.1.1 Images



2.1.2 Bias



2.1.3 Parameters

obi_num	0	Obi number	sched_exp_time	27798.146000	[s] Scheduled observation exposure time
ascdsver	8.4.5	Processing system revision	ontime	27557.161315113	Sum of GTIs [s]
caldsver	4.5.2	 	ontime2	27557.202355117	Sum of GTIs [s]
date	2012-11-14T02:28:16	Date and time of file creation	ontime3	27553.797214806	Sum of GTIs [s]
revision	3	Processing version of data	ontime5	27557.12027511	Sum of GTIs [s]
			ontime6	27557.079235107	Sum of GTIs [s]
			ontime7	27557.161315113	Sum of GTIs [s]
			ontime8	27553.756105214	Sum of GTIs [s]
			l1events	1475572	Number of level 1 events

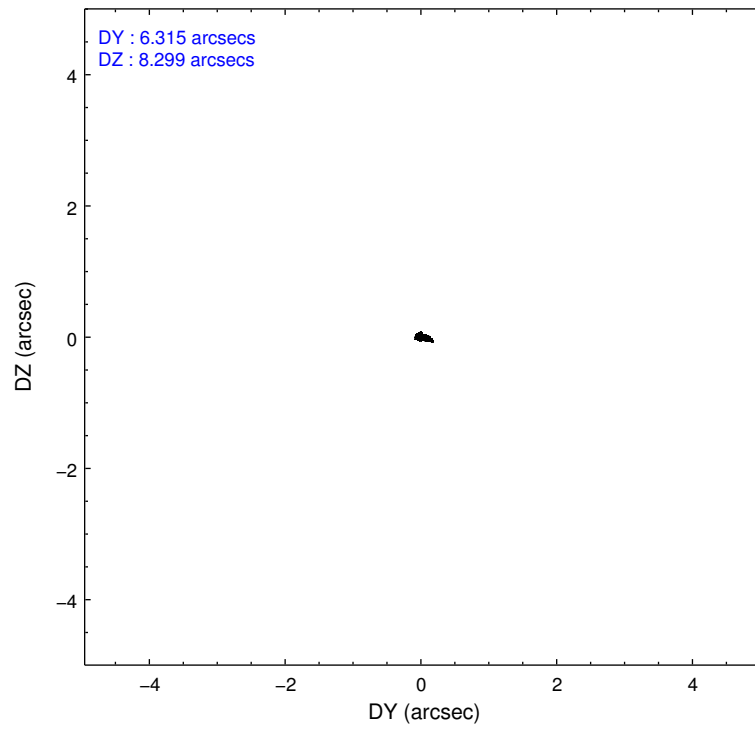
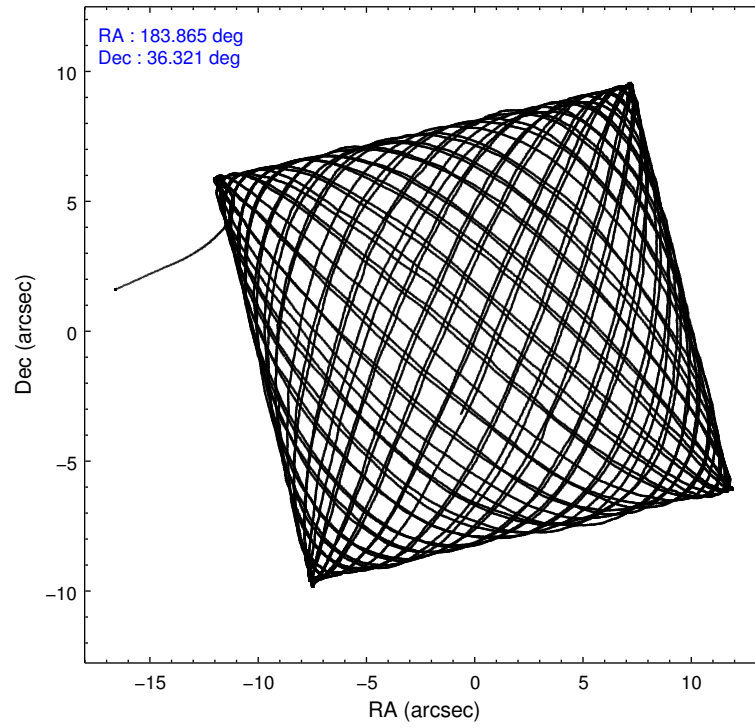
2.1.4 Events

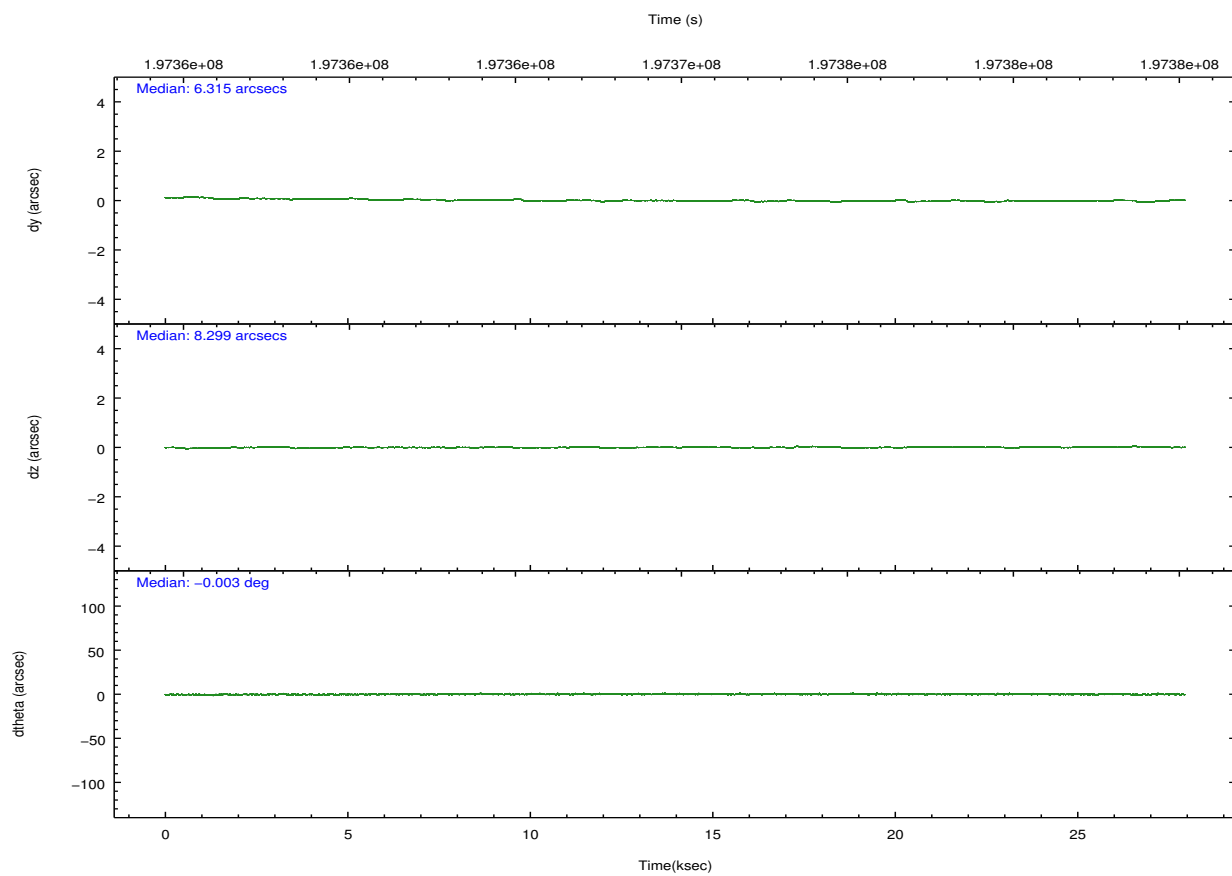
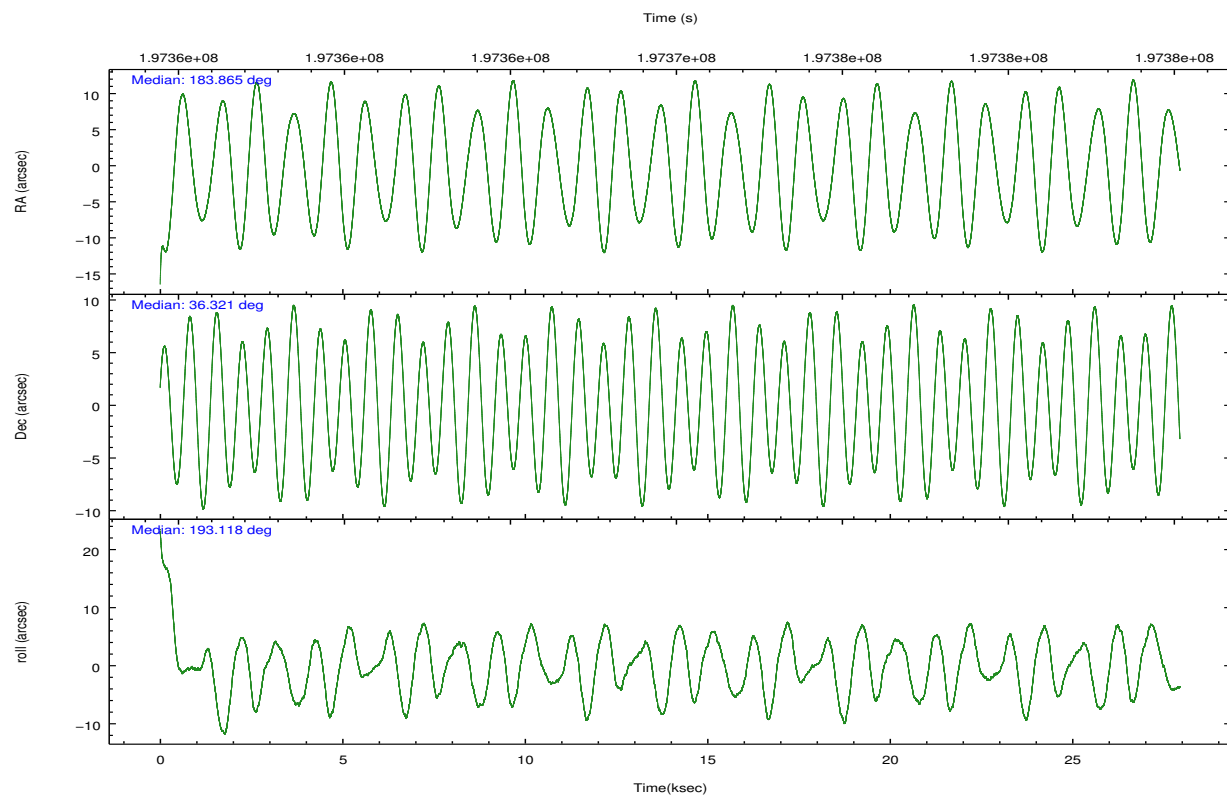
	ccd 2	ccd 3	ccd 5	ccd 6	ccd 7	ccd 8		ccd 2	ccd 3	ccd 5	ccd 6	ccd 7	ccd 8
level 1 events	205691	200411	316136	208613	281592	263129	grade 0 events	20164	20683	25527	19810	12417	27770
rejected events	169835	163789	157711	171105	154103	196603		9%	10%	8%	9%	4%	10%
rejected %	82%	81%	49%	82%	54%	74%	grade 1 events	199	189	1113	151	232	209
								0%	0%	0%	0%	0%	0%
							grade 2 events	5827	5610	45044	6415	24299	12984
								2%	2%	14%	3%	8%	4%
							grade 3 events	2594	2785	5881	2719	10781	5915
								1%	1%	1%	1%	3%	2%
							grade 4 events	2623	2742	5876	2687	10561	5484
								1%	1%	1%	1%	3%	2%
							grade 5 events	7507	8272	21298	9005	24847	11688
								3%	4%	6%	4%	8%	4%
							grade 6 events	4650	4805	76109	5884	69454	14373
								2%	2%	24%	2%	24%	5%
							grade 7 events	162127	155325	135288	161942	129001	184706
								78%	77%	42%	77%	45%	70%

2.2 Compared Parameters

Parameter	Planned	Actual	Parameter	Planned	Actual
Instrument	ACIS	ACIS	Obspar format version number	7	7
Detector	ACIS-235678	ACIS-235678	Obspar file type	PREDICTED	ACTUAL
Grating	NONE	NONE	Obspar update status	NONE	UPDATED
Data mode	FAINT	FAINT	Number of optional ACIS chips dropped	0	0
Observation mode	POINTING	POINTING	On-chip summing requested	N	N
[deg] Pointing RA	183.889783	183.8654048617739	Subarray requested	NONE	NONE
[deg] Pointing Dec	36.339723	36.32085020453665	Alternating exposures requested	N	N
[deg] Pointing Roll	192.953349	193.1244210724242	[s] Primary exposure time	0.000000	3.2
[mm] SIM focus pos	-0.684267	-0.6828225247311905			
[mm] SIM defocus	0	0.001444936568705701			
[mm] SIM translation stage pos	-190.132523	-190.1400660498719			
[mm] SIM translation stage offset	0	0.00754346686406393			
[s] Observation start time (MET)	197355979.184000	197354253.7002			
Observation start date	2004-04-03T05:05:15	2004-04-03T04:37:33			
[s] Observation end time (MET)	197383777.184000	197384091.96401			
Observation end date	2004-04-03T12:48:33	2004-04-03T12:54:51			
Read mode	TIMED	TIMED			

2.3 Aspect



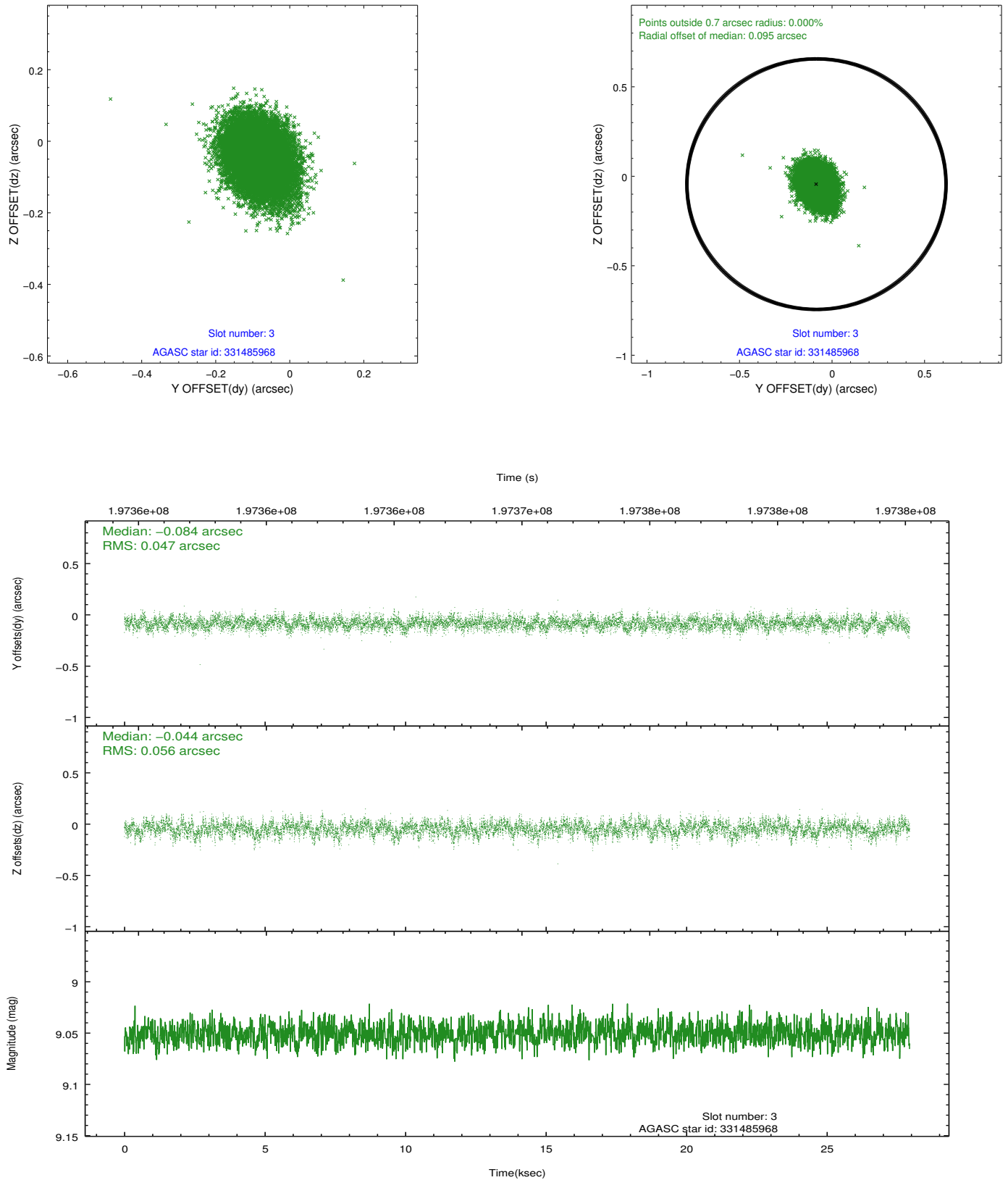


Slot Statistics

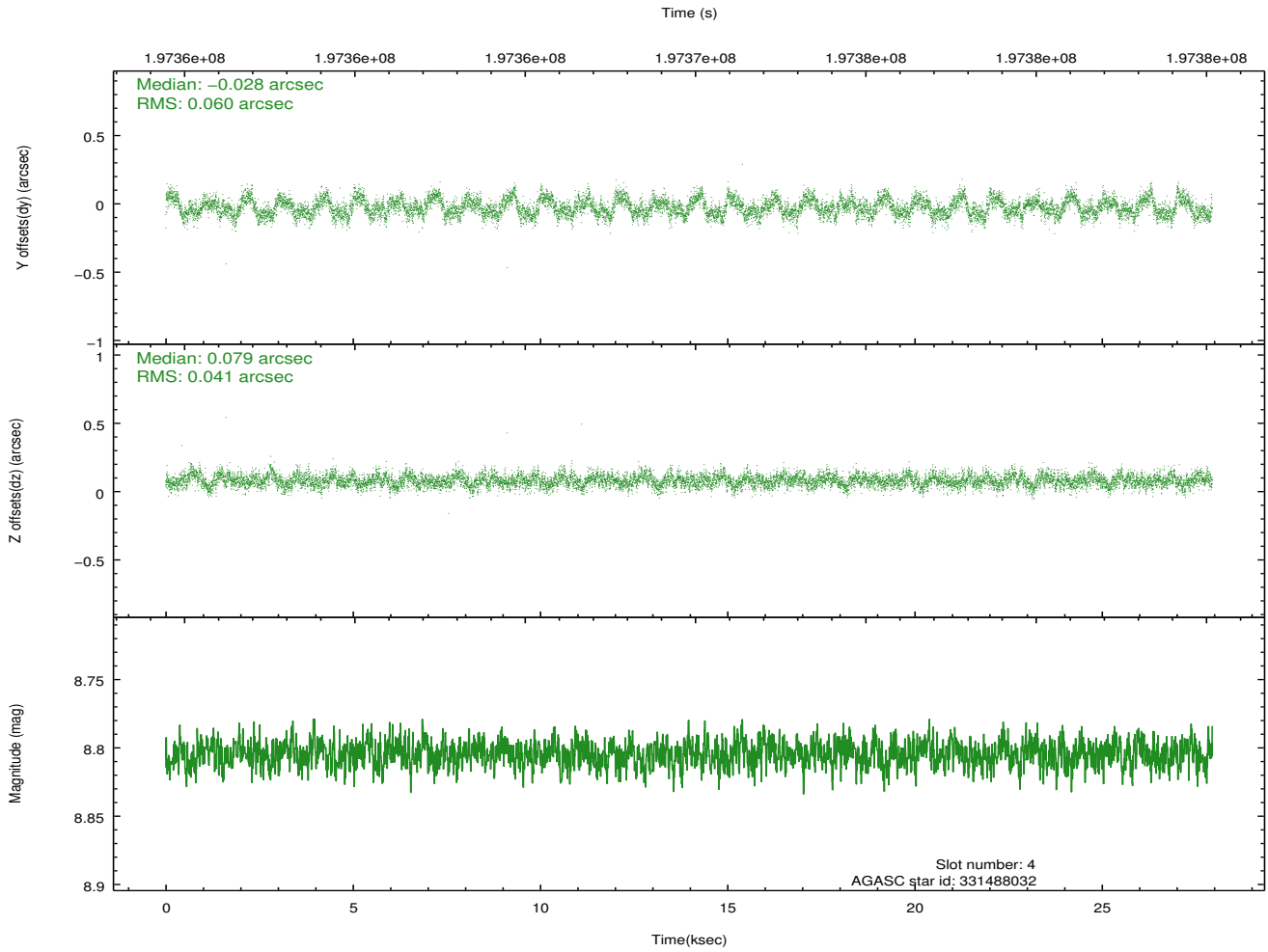
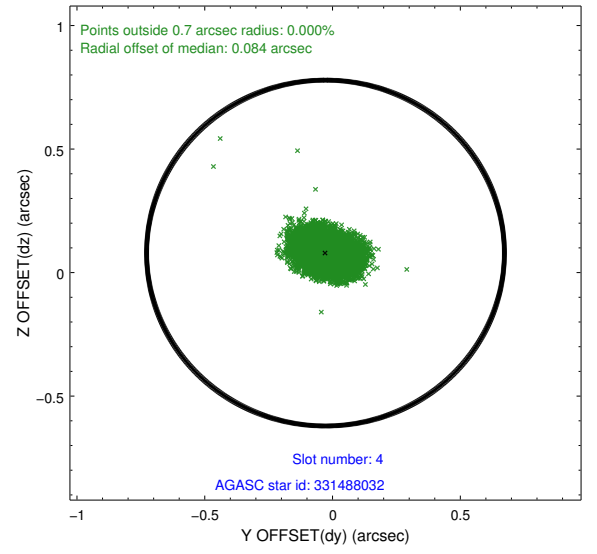
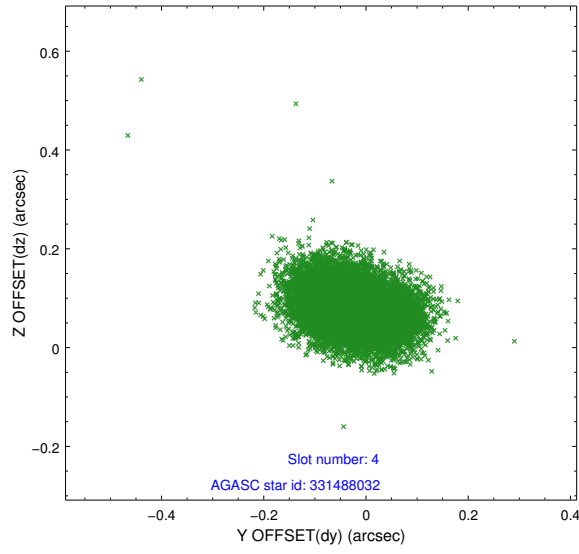
slot	status	id	mag	n_pts	med_dy	med_dz	dr1	dr2	ra	dec	mean_y	mean_z
0	FID	ACIS-S-2	7.10	6816	-0.034	-0.049	0.007	0.012	0.000000	0.000000	-759.11	-1729.54
1	FID	ACIS-S-4	7.21	6816	0.071	0.030	0.006	0.010	0.000000	0.000000	2154.25	178.90
2	FID	ACIS-S-5	7.23	6816	-0.068	0.028	0.006	0.011	0.000000	0.000000	-1811.85	172.71
3	GUIDE	331485968	9.05	13624	-0.084	-0.044	0.077	0.127	183.439805	36.736932	944.13	-1687.14
4	GUIDE	331488032	8.80	13631	-0.028	0.079	0.077	0.125	183.136084	36.256011	2198.14	-204.65
5	GUIDE	331488832	9.95	13613	0.042	-0.052	0.128	0.205	184.485285	36.899363	-2123.09	-1584.44
6	GUIDE	331496008	9.38	13626	0.043	0.030	0.100	0.164	184.214946	35.936223	-598.57	1626.82
7	GUIDE	331496608	9.62	13624	0.022	-0.012	0.099	0.158	183.557200	35.638037	1514.80	2242.72

2.4 Star Slots

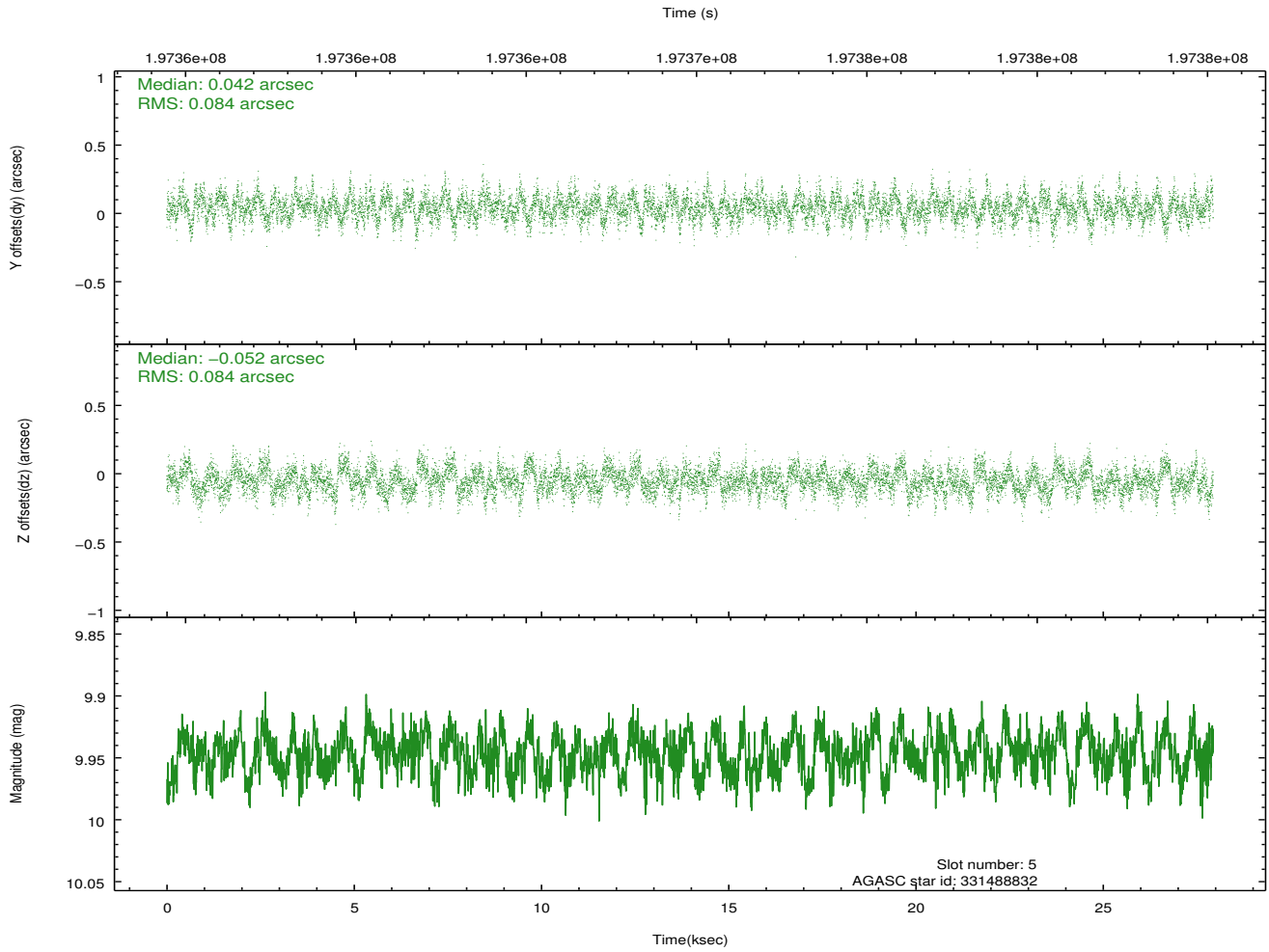
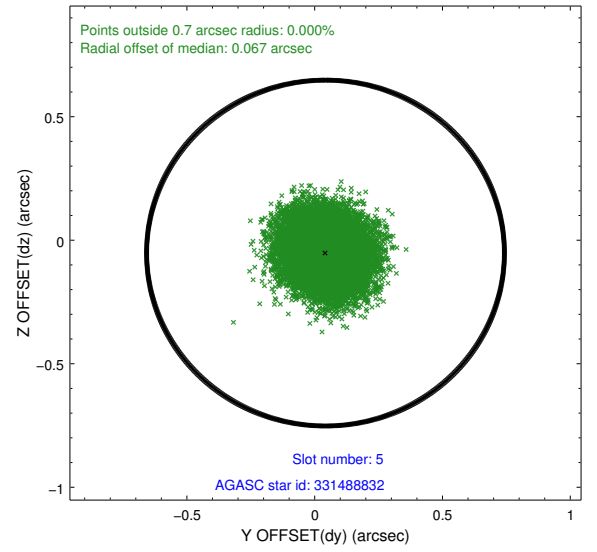
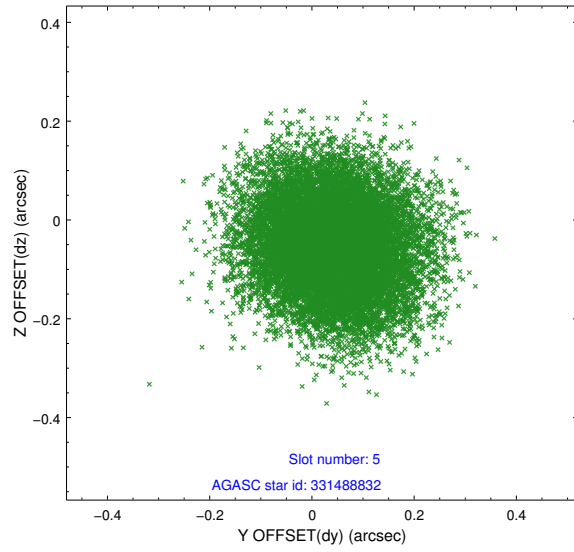
2.4.1 Slot 3



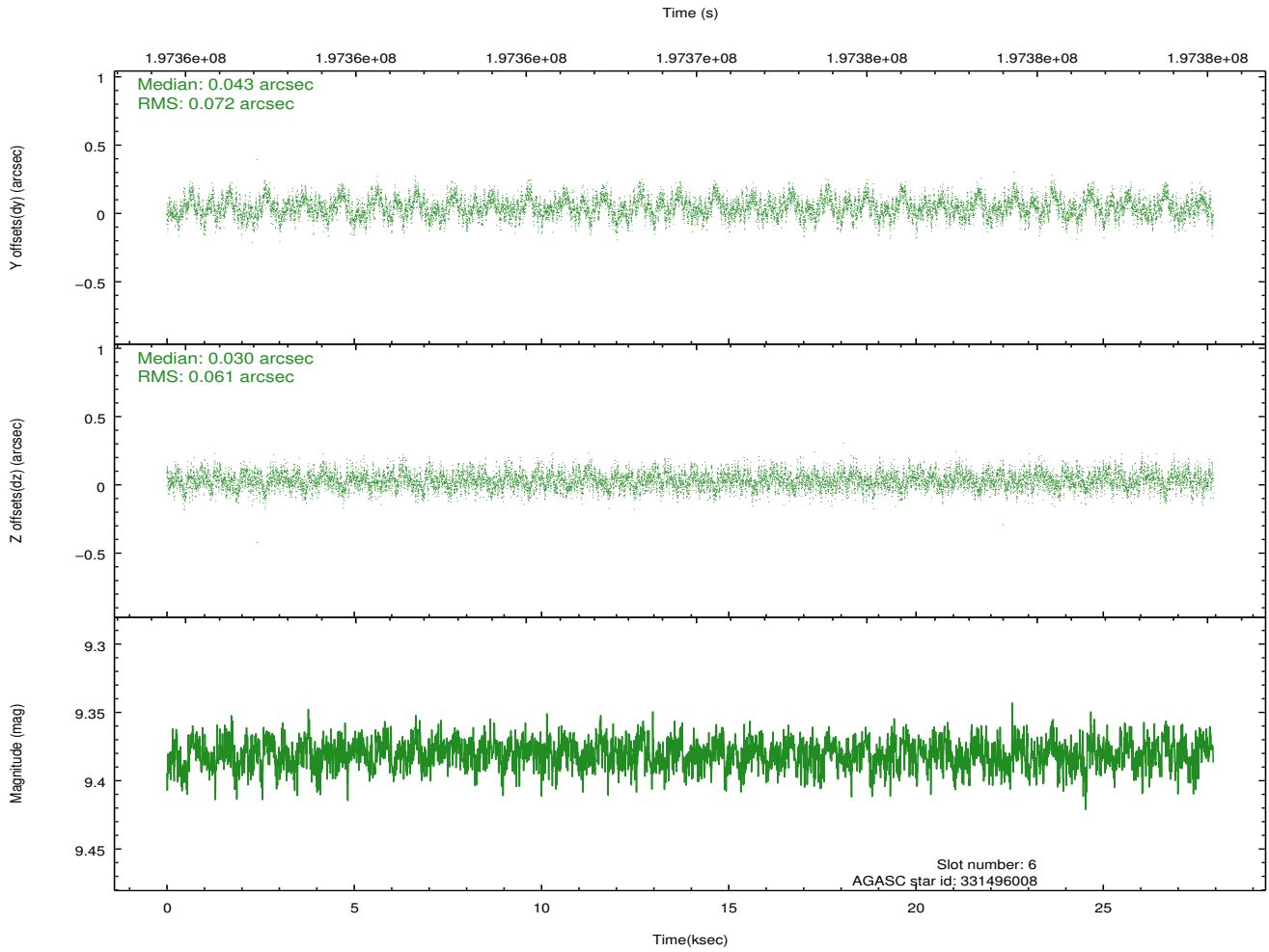
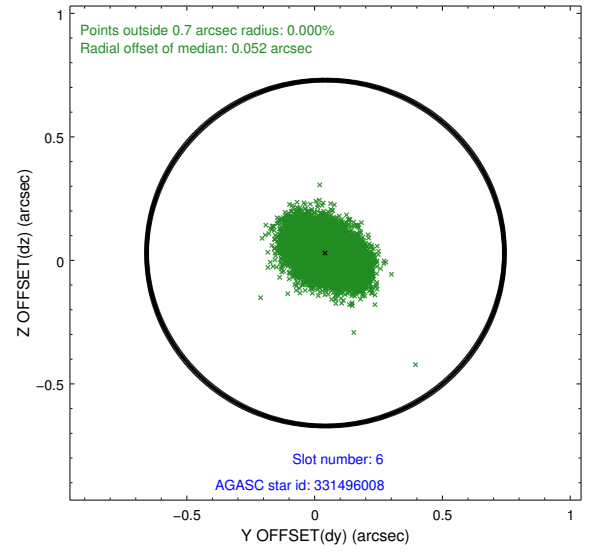
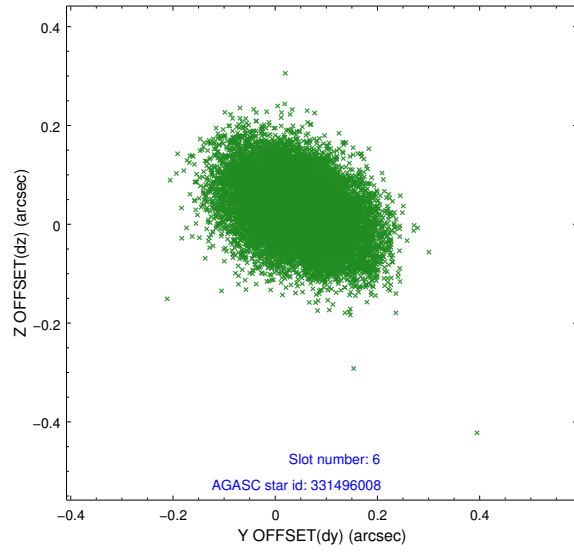
2.4.2 Slot 4



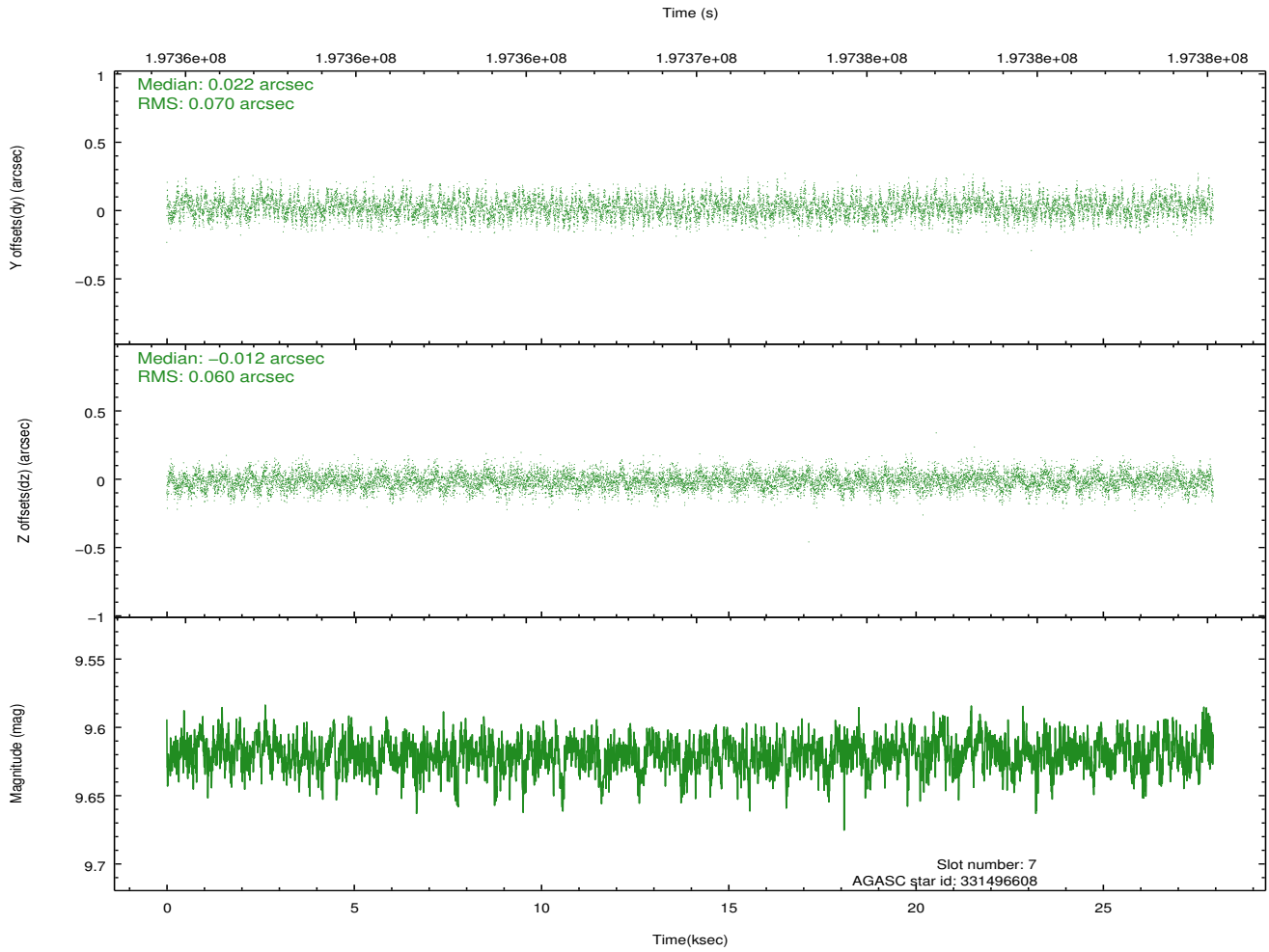
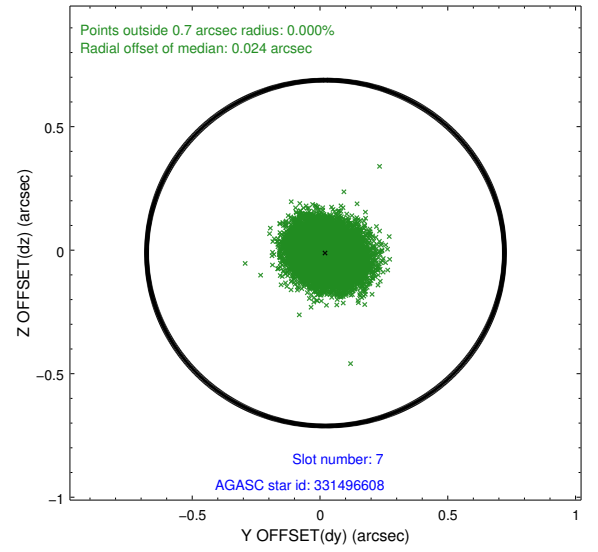
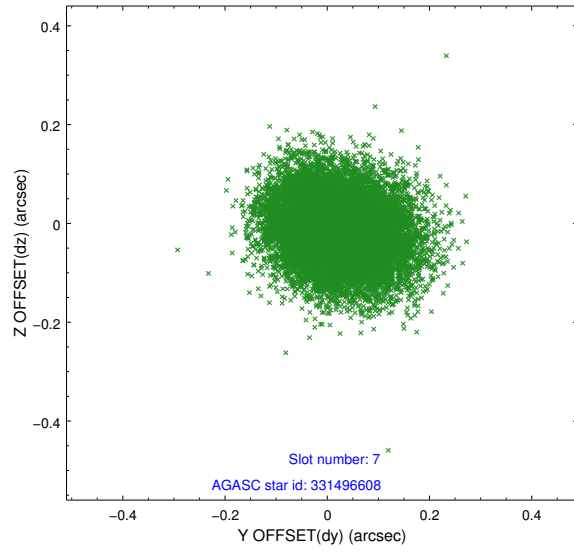
2.4.3 Slot 5



2.4.4 Slot 6

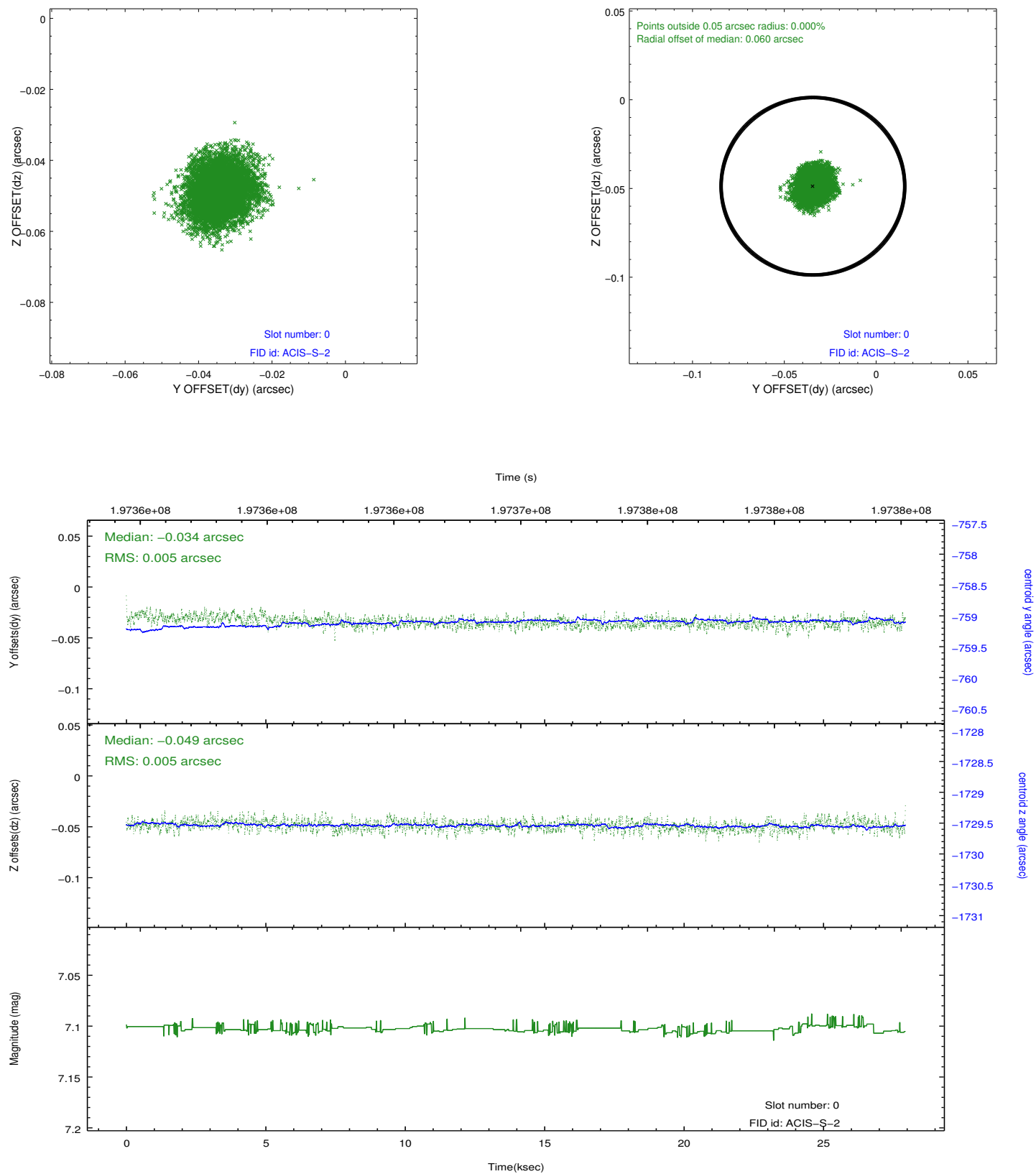


2.4.5 Slot 7

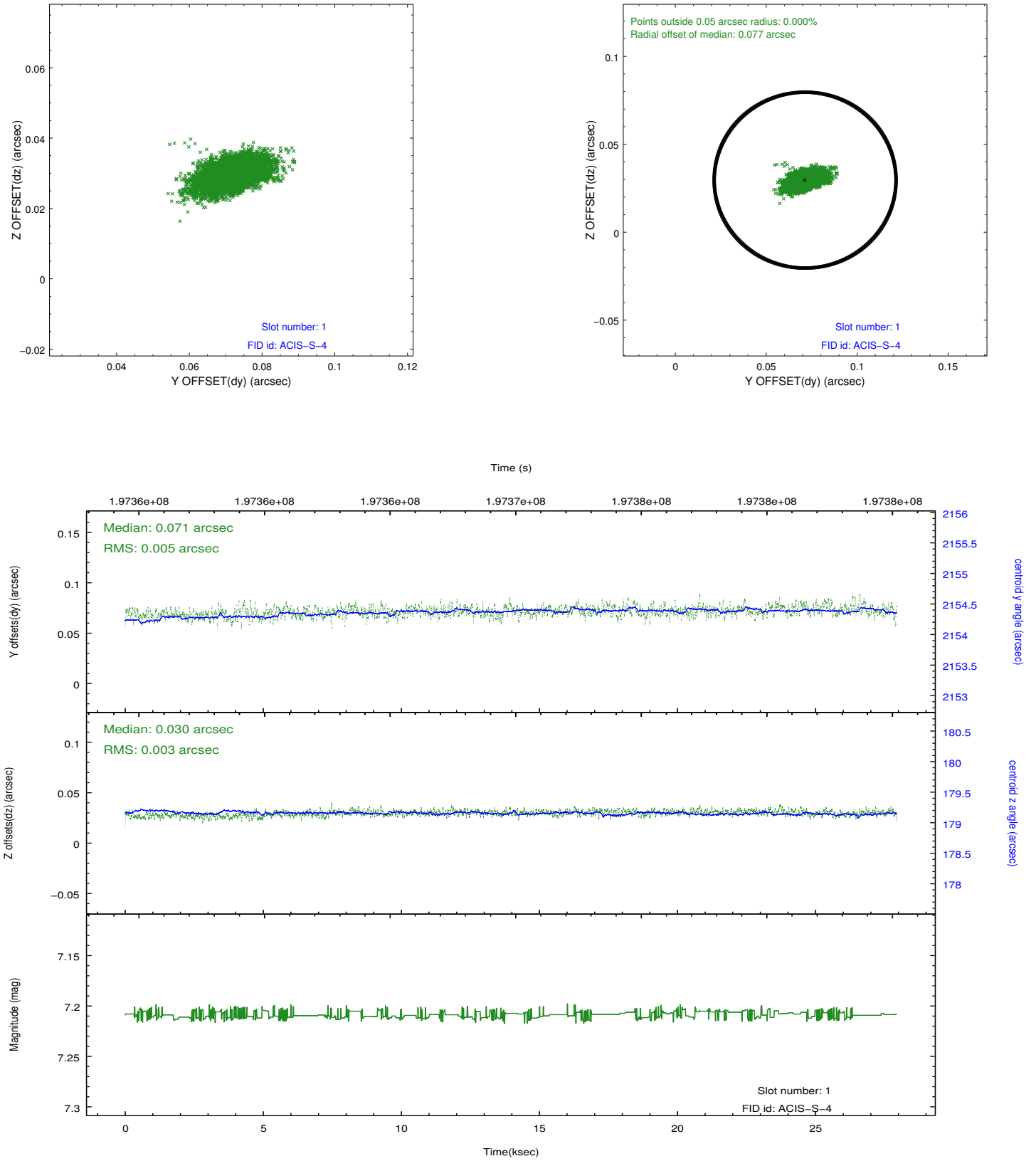


2.5 FID Slots

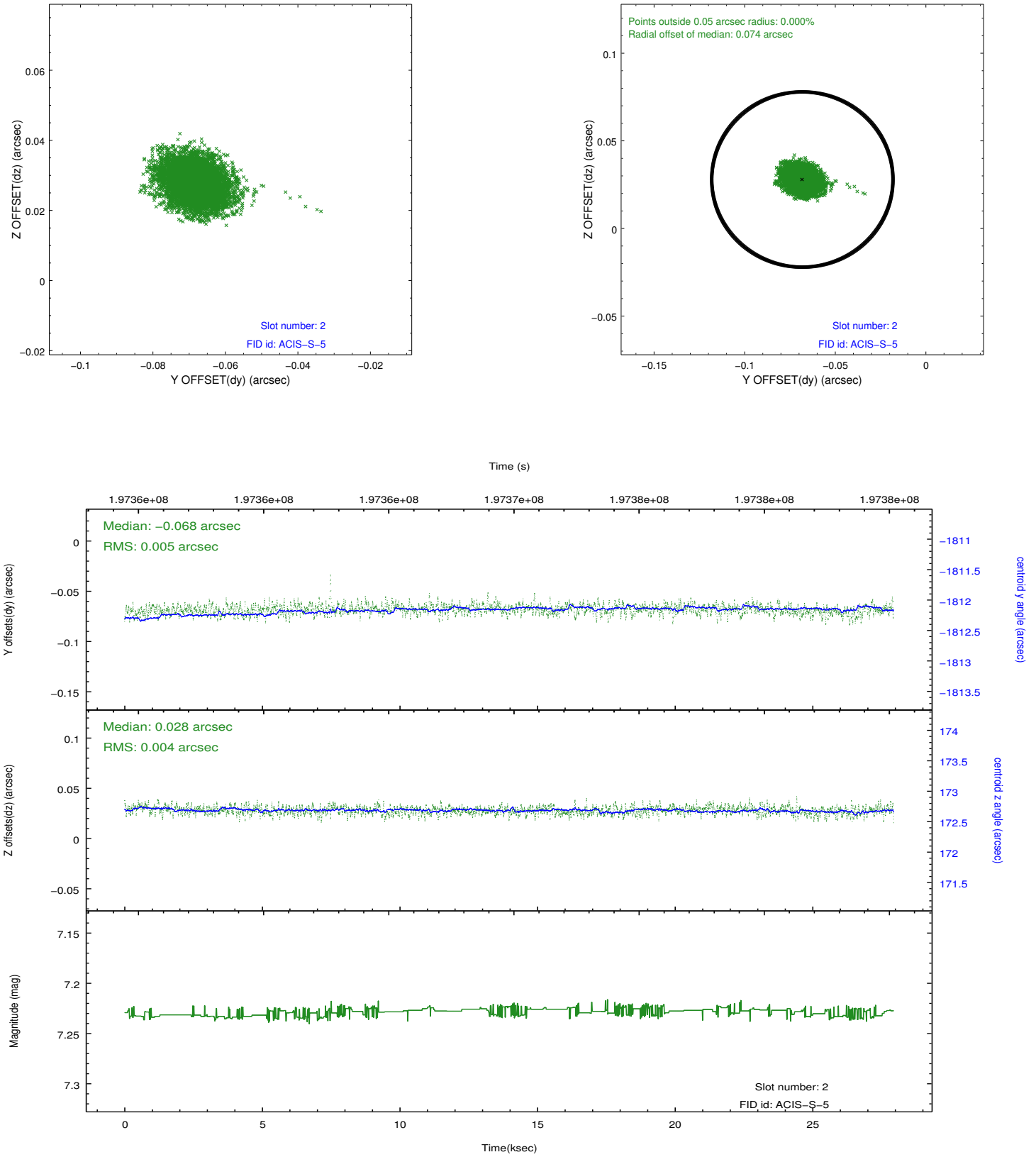
2.5.1 Slot 0



2.5.2 Slot 1



2.5.3 Slot 2



A Summary

A.1 Status

V&V Scientist	Beth Sundheim
V&V Date (YYYY-MM-DD)	2012.12.10
V&V Edition	1
V&V Disposition and Status	OK
V&V Charge Time	27.558

A.2 Comments