

V&V Reference Report

L2 ASCDS Version : 8.4.5

Observation 4733 - L2 Version 3
Chandra X-Ray Center

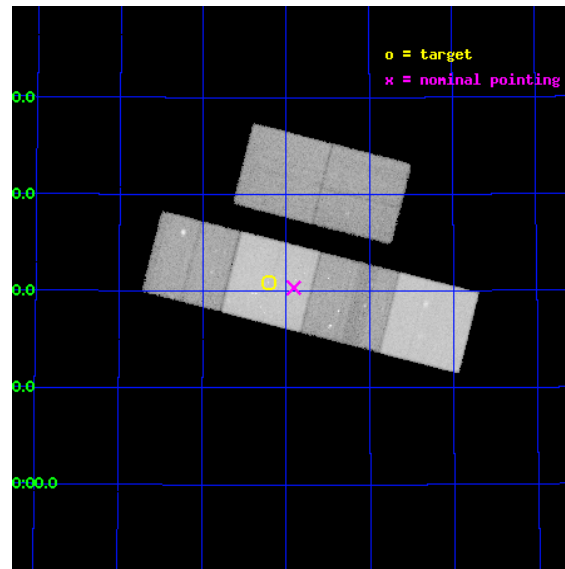
L2 Processing Date : Dec 1 2012

Contents

1	Front	2
2	OBI	3
2.1	OBI	3
2.1.1	Images	3
2.1.2	Bias	3
2.1.3	Parameters	4
2.1.4	Events	4
2.2	Compared Parameters	5
2.3	Aspect	6
2.4	Star Slots	9
2.4.1	Slot 3	9
2.4.2	Slot 4	10
2.4.3	Slot 5	11
2.4.4	Slot 6	12
2.4.5	Slot 7	13
2.5	FID Slots	14
2.5.1	Slot 0	14
2.5.2	Slot 1	15
2.5.3	Slot 2	16
A	Summary	17
A.1	Status	17
A.2	Comments	17

1 Front

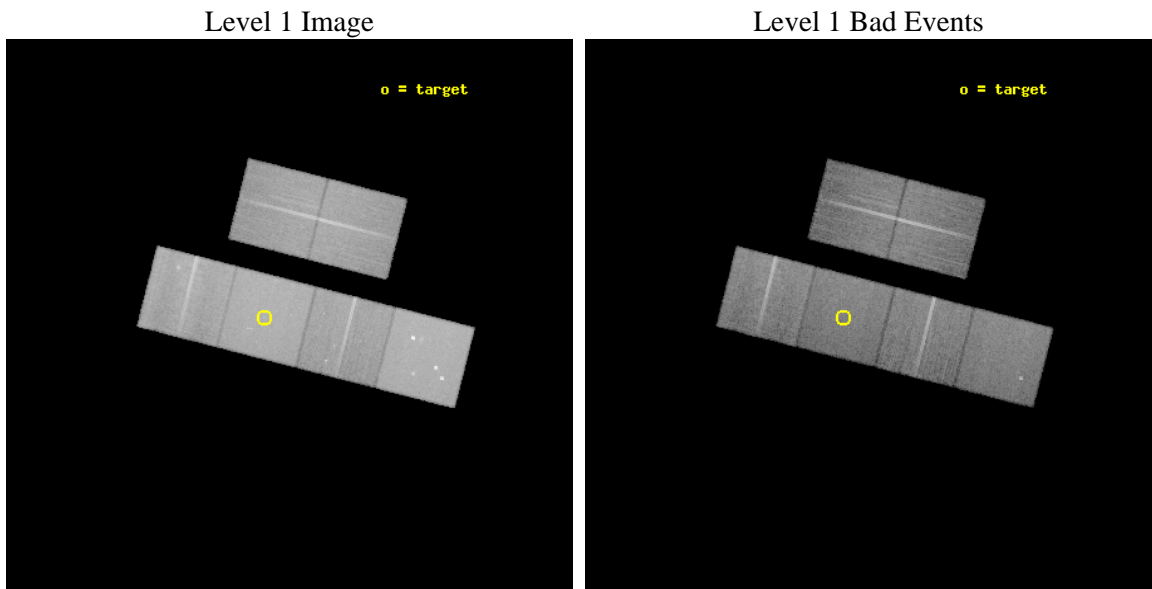
seq_num	600388	Sequence number
obs_id	4733	Observation id
title	An Ultra-Deep Study of M101	Proposal title
observer	Dr. K.D. Kuntz	Principal investigator
object	M101	Source name
dtcycle	0	
cycle	P	events from which exps? Prim/Second/Both
ra_targ	210.80375	Observer's specified target RA [deg]
dec_targ	54.348778	Observer's specified target Dec [deg]
ra_nom	210.72700446167	Nominal RA [deg]
dec_nom	54.339235944162	Nominal Dec [deg]
roll_nom	194.29183525427	Nominal Roll [deg]
revision	3	Processing version of data
ontime	25132.799906373	Sum of GTIs [s]
livetime	24814.553260803	Livetime [s]
ontime2	24435.991087615	Sum of GTIs [s]
ontime3	24552.66631642	Sum of GTIs [s]
ontime5	25132.799906373	Sum of GTIs [s]
ontime6	24685.545968413	Sum of GTIs [s]
ontime7	25132.799906373	Sum of GTIs [s]
ontime8	24727.678591907	Sum of GTIs [s]
l2events	494193	Number of level 2 events



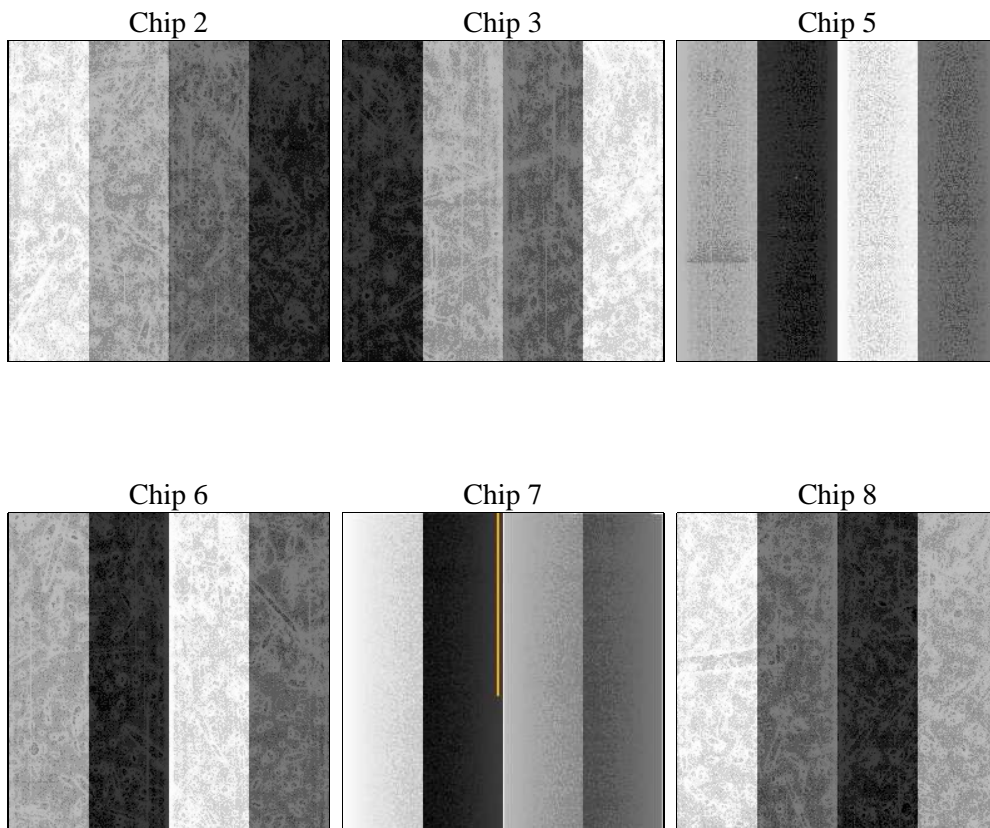
2 OBI

2.1 OBI

2.1.1 Images



2.1.2 Bias



2.1.3 Parameters

obi_num	0	Obi number	sched_exp_time	25000.000000	[s] Scheduled observation exposure time
ascdsver	8.4.5	Processing system revision	ontime	25132.799906373	Sum of GTIs [s]
caldsver	4.5.2	 	ontime2	24435.991087615	Sum of GTIs [s]
date	2012-12-01T01:59:53	Date and time of file creation	ontime3	24552.66631642	Sum of GTIs [s]
revision	3	Processing version of data	ontime5	25132.799906373	Sum of GTIs [s]
			ontime6	24685.545968413	Sum of GTIs [s]
			ontime7	25132.799906373	Sum of GTIs [s]
			ontime8	24727.678591907	Sum of GTIs [s]
			l1events	1579380	Number of level 1 events

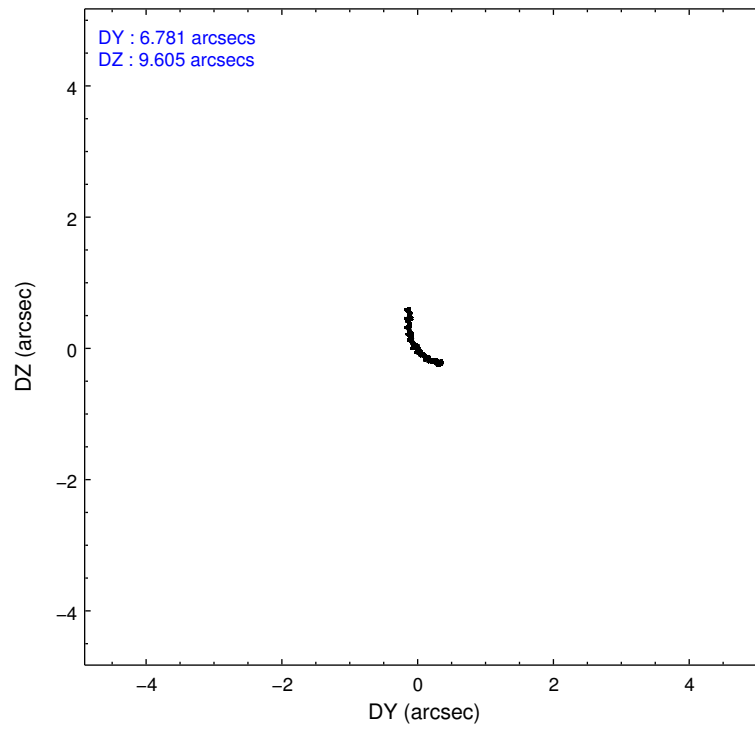
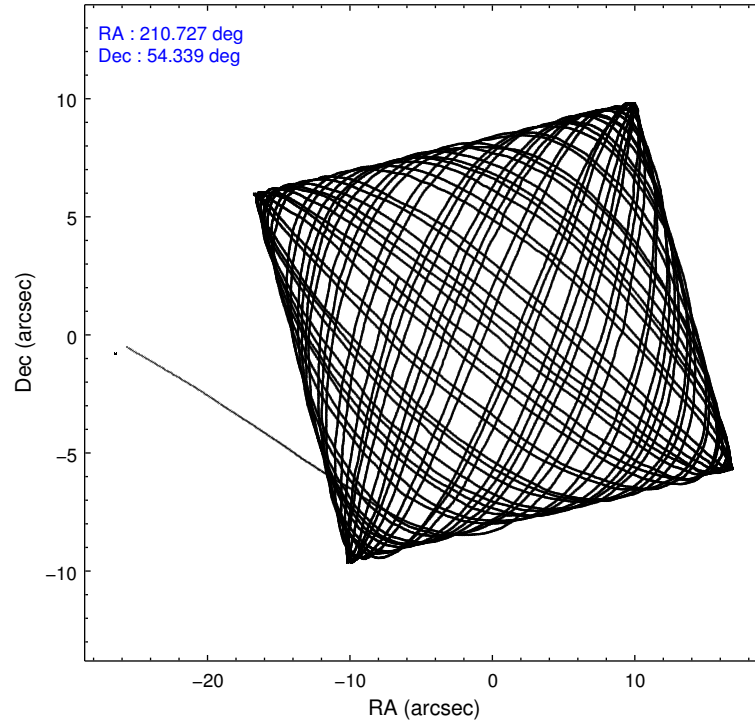
2.1.4 Events

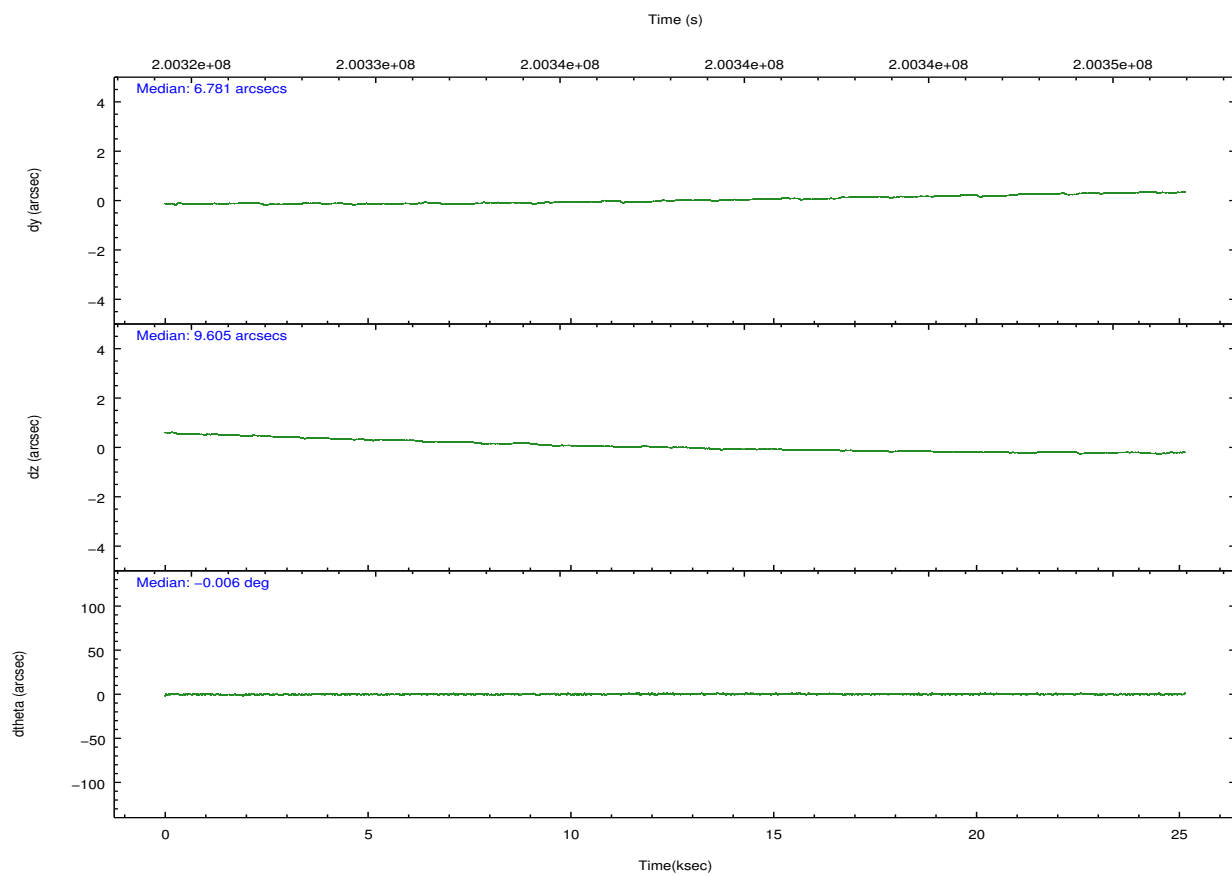
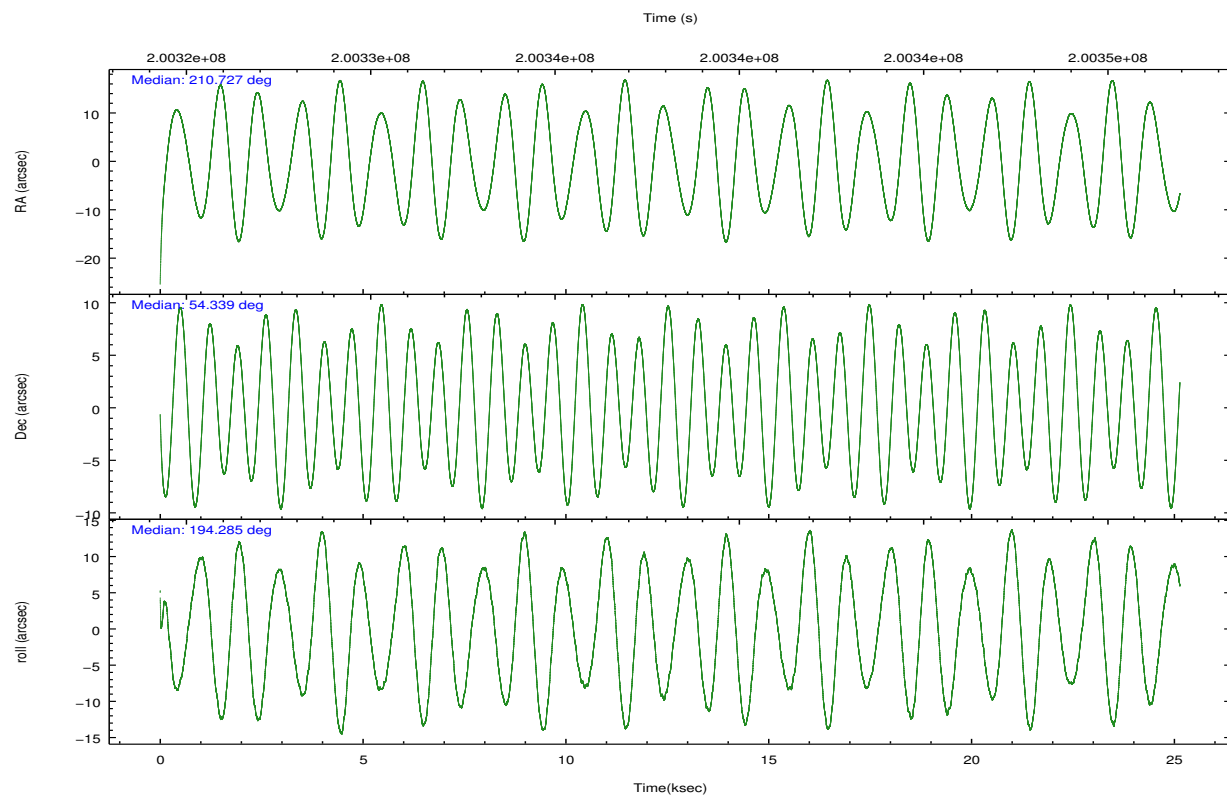
	ccd 2	ccd 3	ccd 5	ccd 6	ccd 7	ccd 8		ccd 2	ccd 3	ccd 5	ccd 6	ccd 7	ccd 8
level 1 events	219847	211680	339679	222399	309630	276145	grade 0 events	33520	32973	25007	34371	15447	43602
rejected events	169698	161333	170372	168394	160762	193781		15%	15%	7%	15%	4%	15%
rejected %	77%	76%	50%	75%	51%	70%	grade 1 events	224	223	360	184	227	305
								0%	0%	0%	0%	0%	0%
							grade 2 events	7017	7073	51550	8167	28719	14708
								3%	3%	15%	3%	9%	5%
							grade 3 events	2991	3241	7309	3161	12609	6409
								1%	1%	2%	1%	4%	2%
							grade 4 events	3050	3215	7021	3308	12246	6078
								1%	1%	2%	1%	3%	2%
							grade 5 events	7515	8345	22406	8720	25299	11403
								3%	3%	6%	3%	8%	4%
							grade 6 events	4956	5305	87312	6410	86743	14690
								2%	2%	25%	2%	28%	5%
							grade 7 events	160574	151305	138714	158078	128340	178950
								73%	71%	40%	71%	41%	64%

2.2 Compared Parameters

Parameter	Planned	Actual	Parameter	Planned	Actual
Instrument	ACIS	ACIS	Obspar format version number	7	7
Detector	ACIS-235678	ACIS-235678	Obspar file type	PREDICTED	ACTUAL
Grating	NONE	NONE	Obspar update status	NONE	UPDATED
Data mode	VFAINT	VFAINT	Number of optional ACIS chips dropped	0	0
Observation mode	POINTING	POINTING	On-chip summing requested	N	N
[deg] Pointing RA	210.760042	210.7270044616722	Subarray requested	NONE	NONE
[deg] Pointing Dec	54.358546	54.33923594416175	Alternating exposures requested	N	N
[deg] Pointing Roll	194.108366	194.2918352542735	[s] Primary exposure time	0.000000	3.2
[mm] SIM focus pos	-0.684267	-0.6828225247311905			
[mm] SIM defocus	0	0.001444936568705701			
[mm] SIM translation stage pos	-190.132523	-190.1400660498719			
[mm] SIM translation stage offset	0	0.00754346686406393			
[s] Observation start time (MET)	200325689.184000	200323778.7685			
Observation start date	2004-05-07T14:00:25	2004-05-07T13:29:38			
[s] Observation end time (MET)	200350689.184000	200351233.90721			
Observation end date	2004-05-07T20:57:05	2004-05-07T21:07:13			
Read mode	TIMED	TIMED			

2.3 Aspect



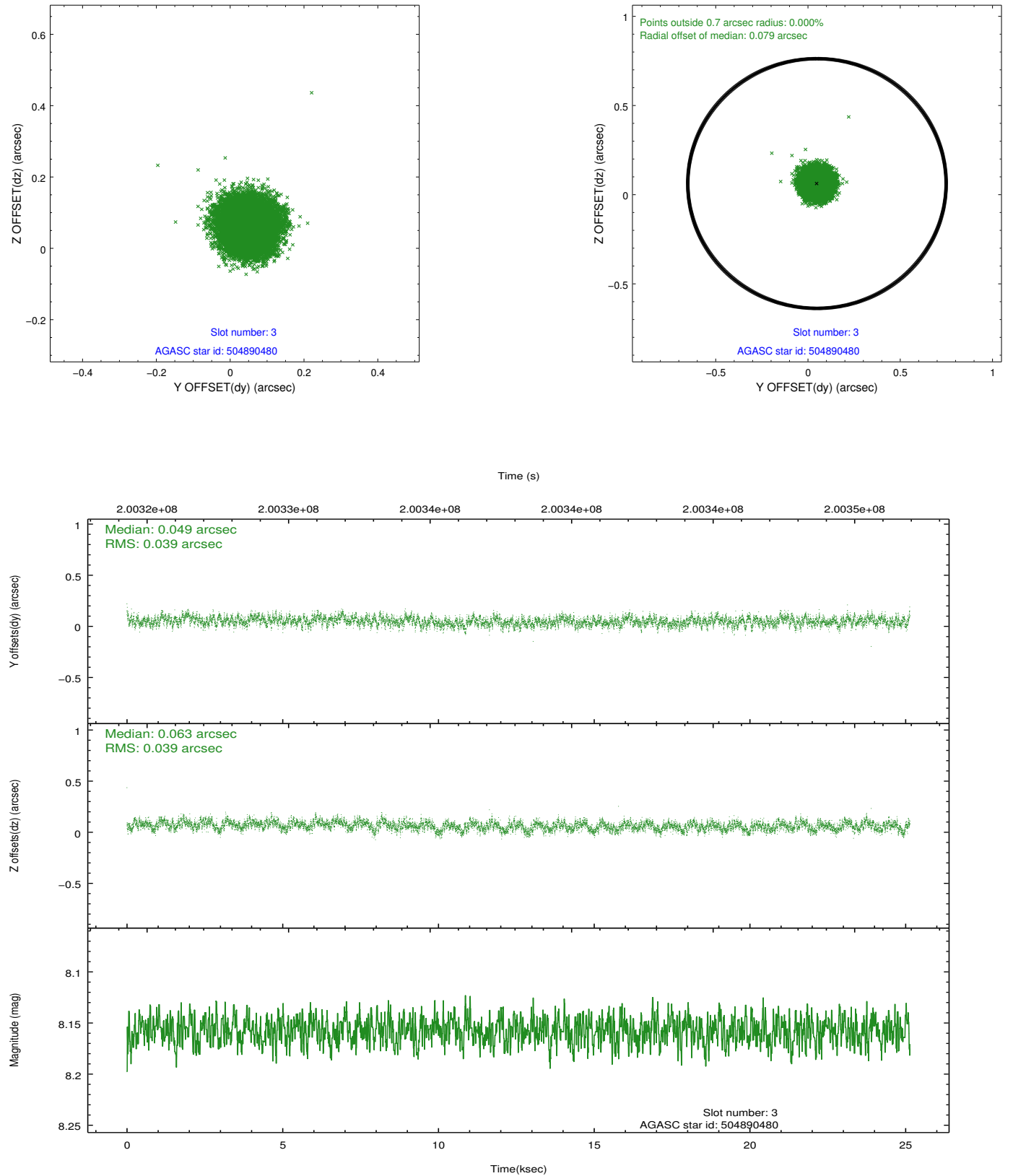


Slot Statistics

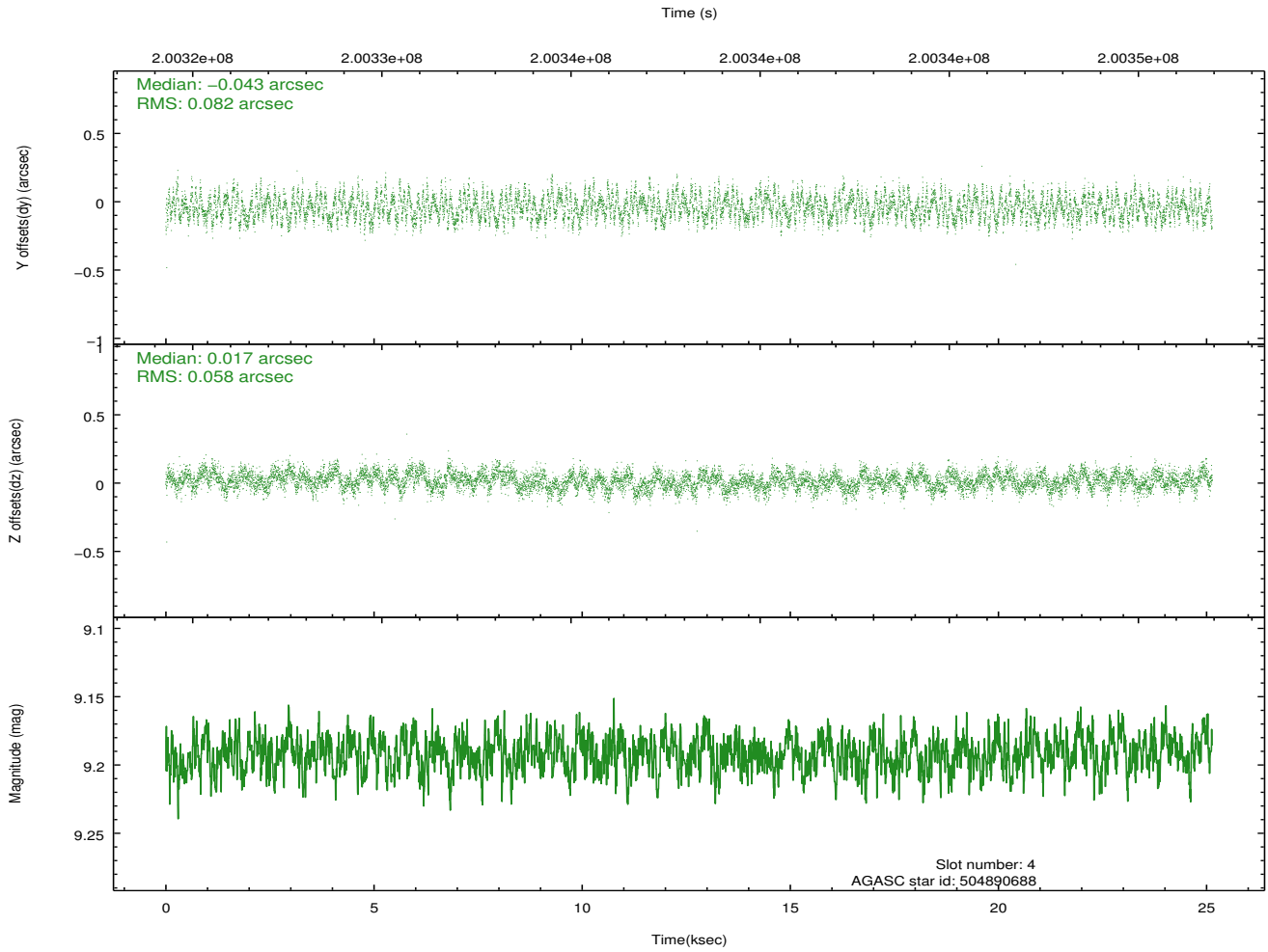
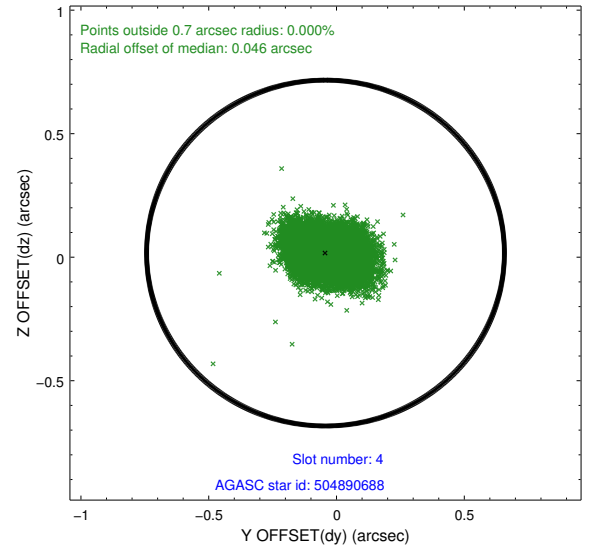
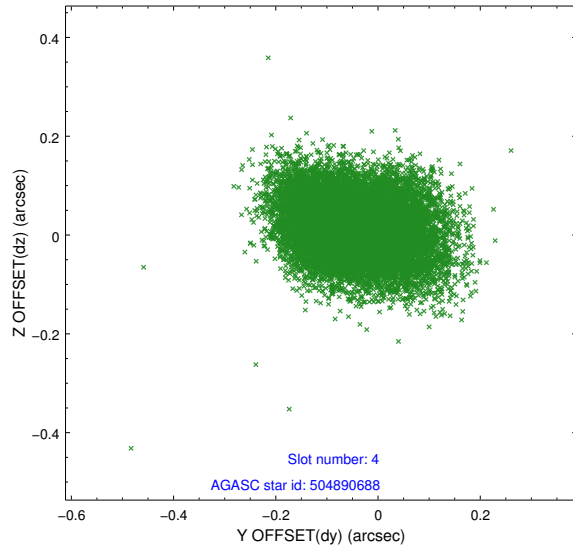
slot	status	id	mag	n_pts	med_dy	med_dz	dr1	dr2	ra	dec	mean_y	mean_z
0	FID	ACIS-S-1	7.18	6132	0.022	-0.009	0.016	0.029	0.000000	0.000000	936.50	-1726.54
1	FID	ACIS-S-5	7.24	6132	-0.053	0.018	0.012	0.018	0.000000	0.000000	-1812.51	170.93
2	FID	ACIS-S-6	7.35	6132	0.009	-0.003	0.021	0.041	0.000000	0.000000	401.91	815.01
3	GUIDE	504890480	8.16	12260	0.049	0.063	0.060	0.094	210.132463	53.768436	1812.08	1729.91
4	GUIDE	504890688	9.19	12258	-0.043	0.017	0.109	0.171	211.697686	53.837149	-1477.59	2293.68
5	GUIDE	504890776	9.28	12259	-0.024	-0.016	0.087	0.142	211.095934	54.816966	-1078.20	-1432.06
6	GUIDE	504891480	8.08	12261	0.085	-0.096	0.068	0.107	210.708012	54.666096	-164.51	-1100.23
7	GUIDE	505292416	9.30	12256	-0.073	0.038	0.134	0.205	210.920759	55.040479	-919.49	-2300.77

2.4 Star Slots

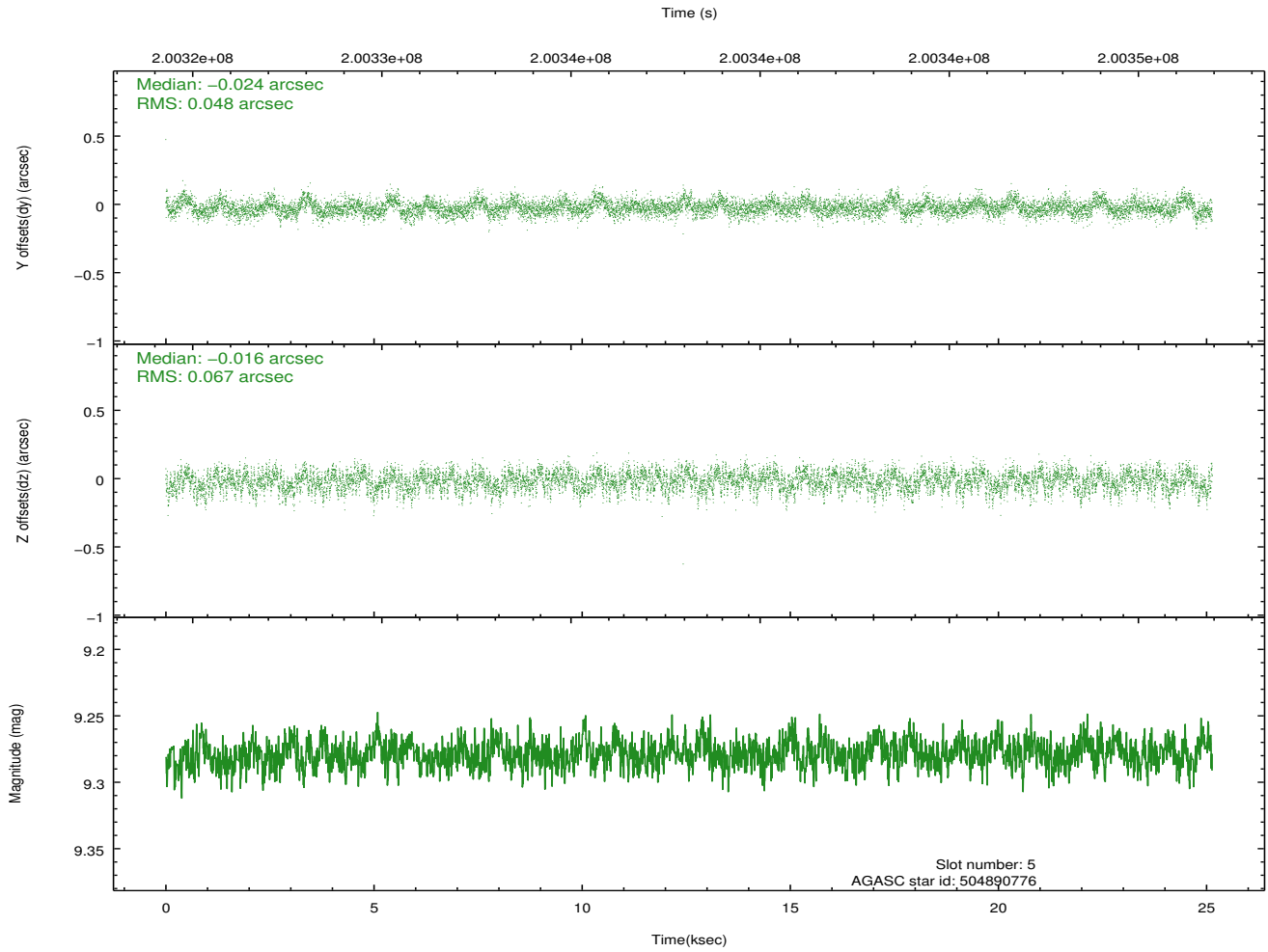
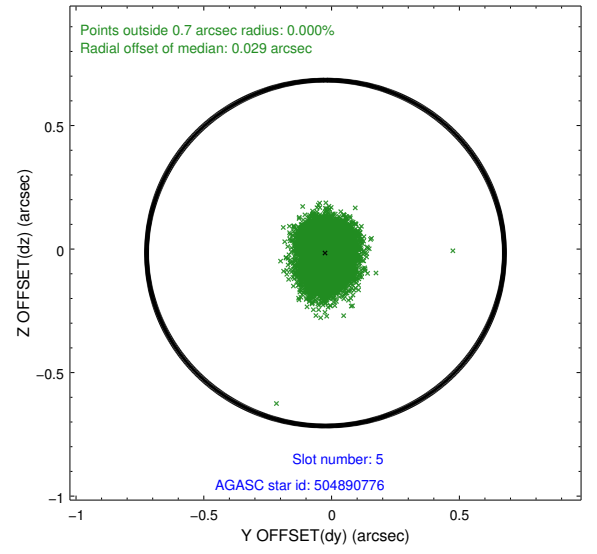
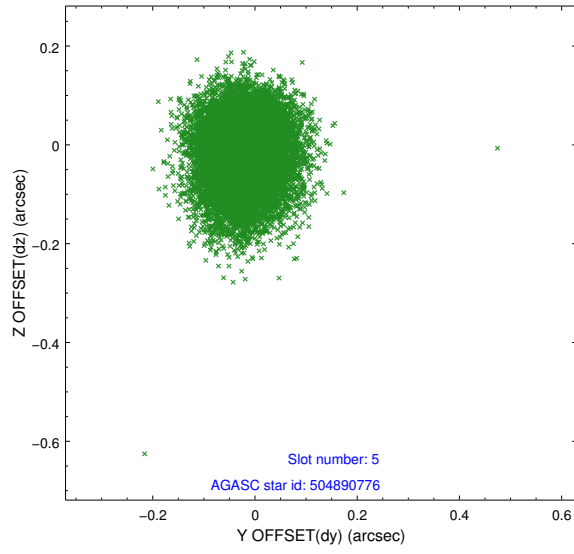
2.4.1 Slot 3



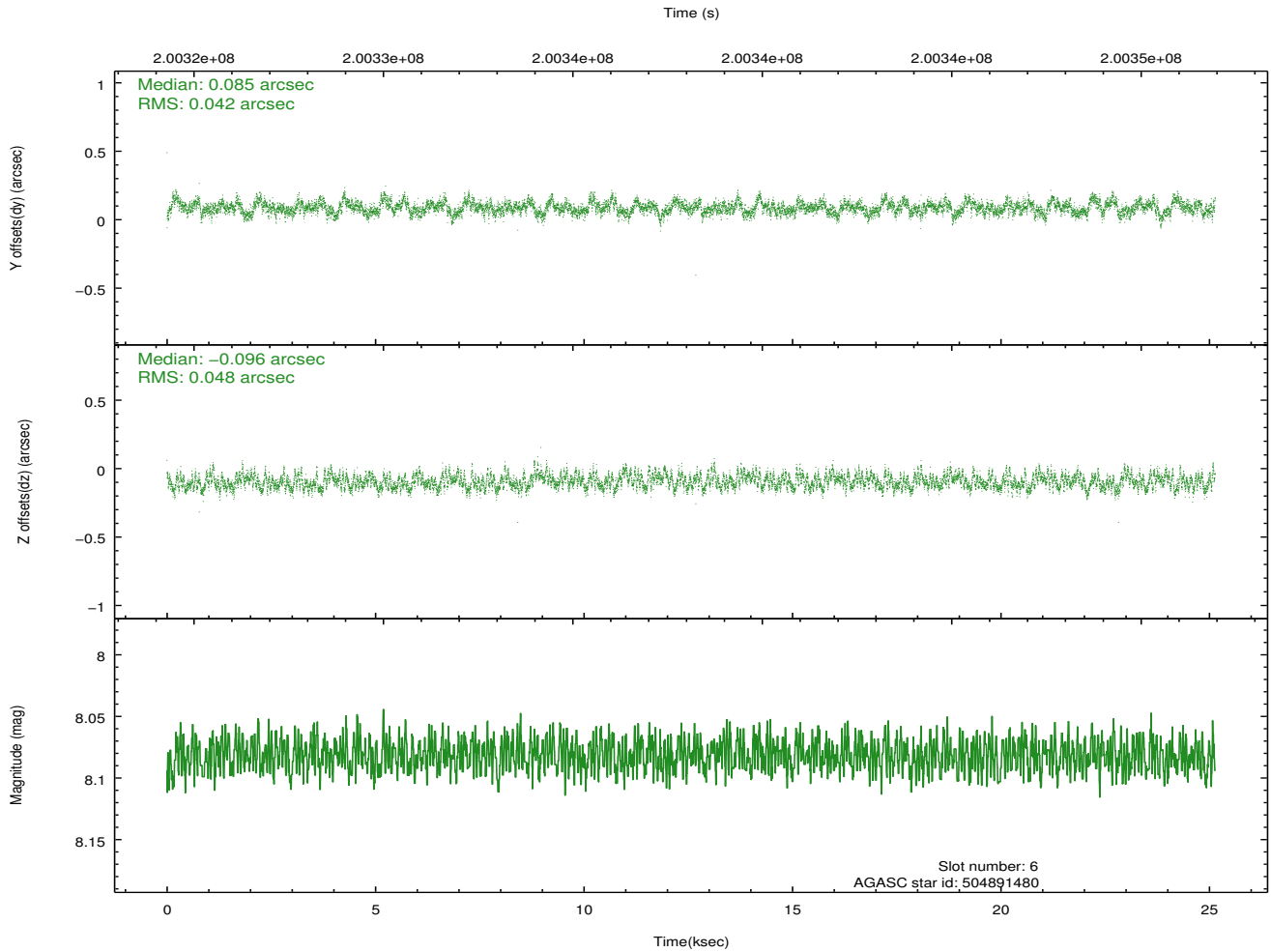
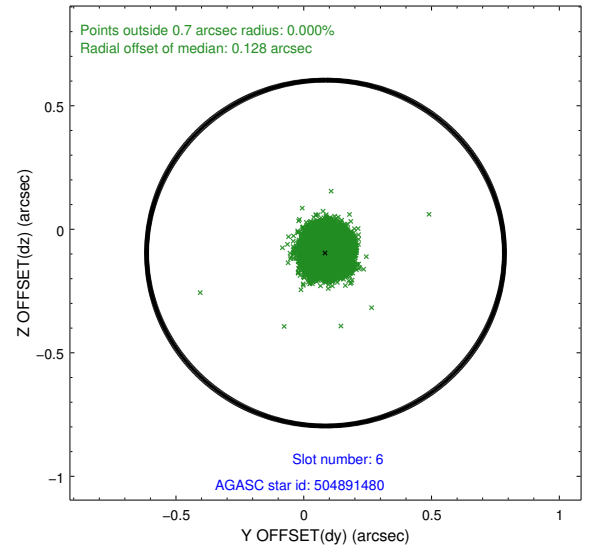
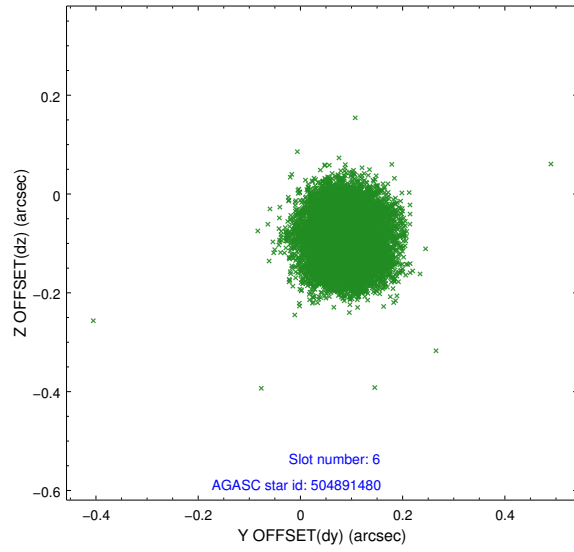
2.4.2 Slot 4



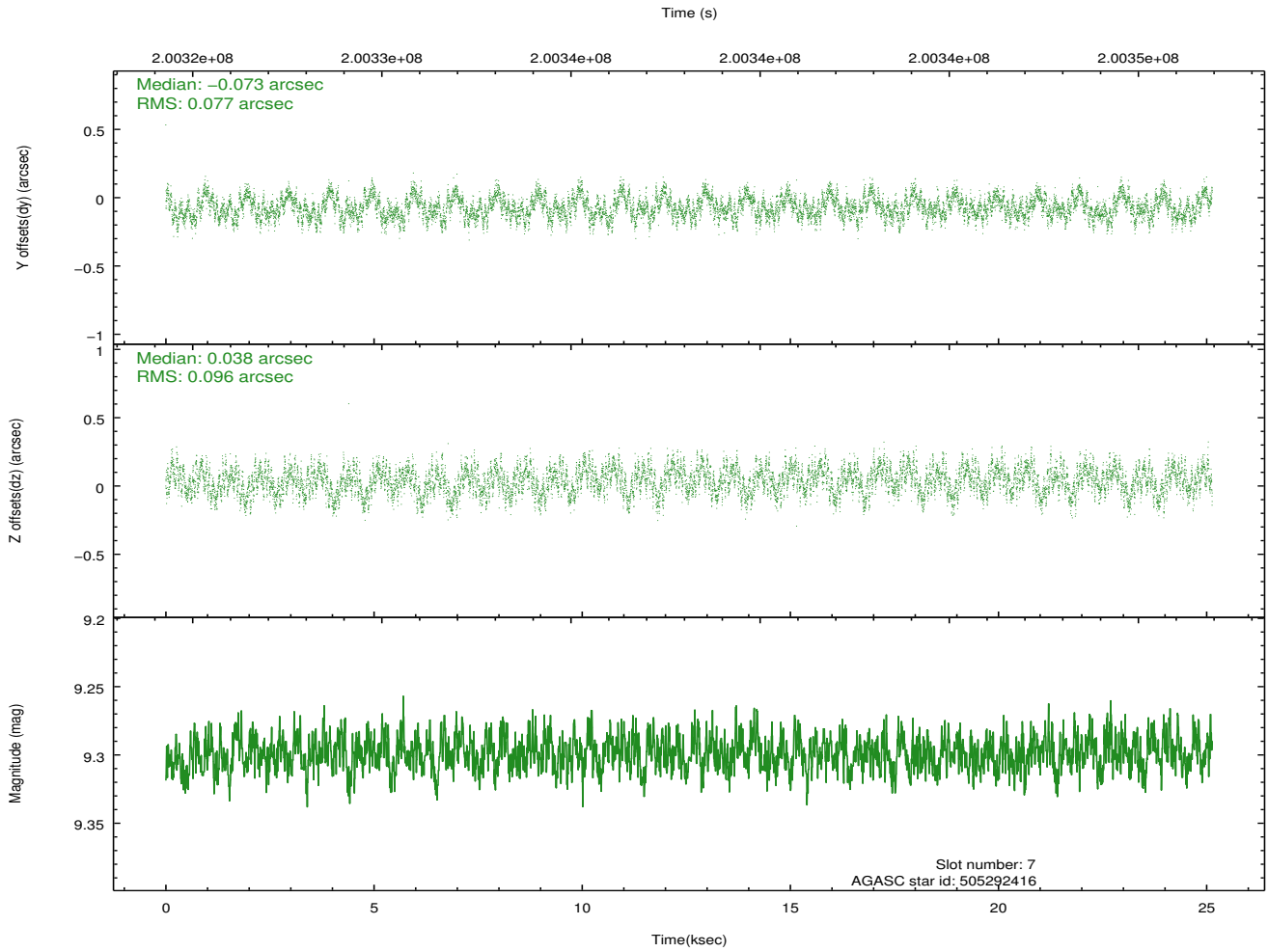
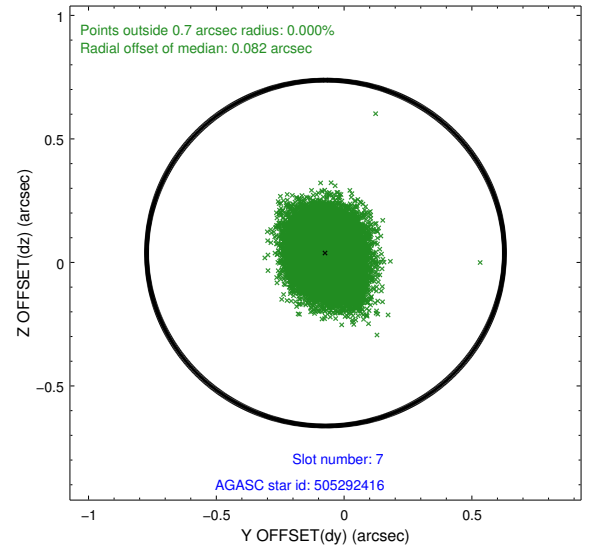
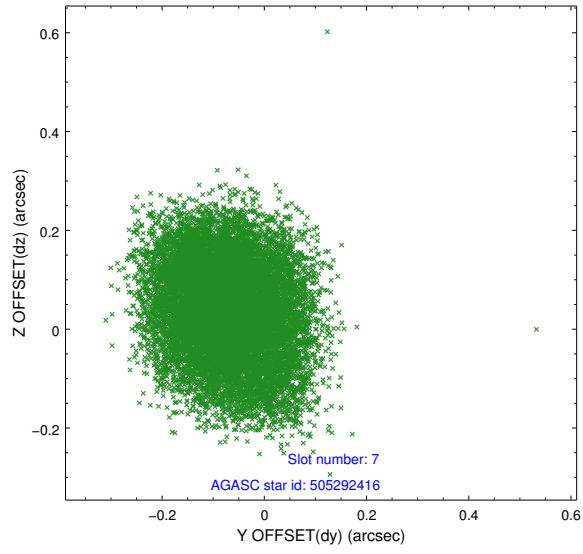
2.4.3 Slot 5



2.4.4 Slot 6

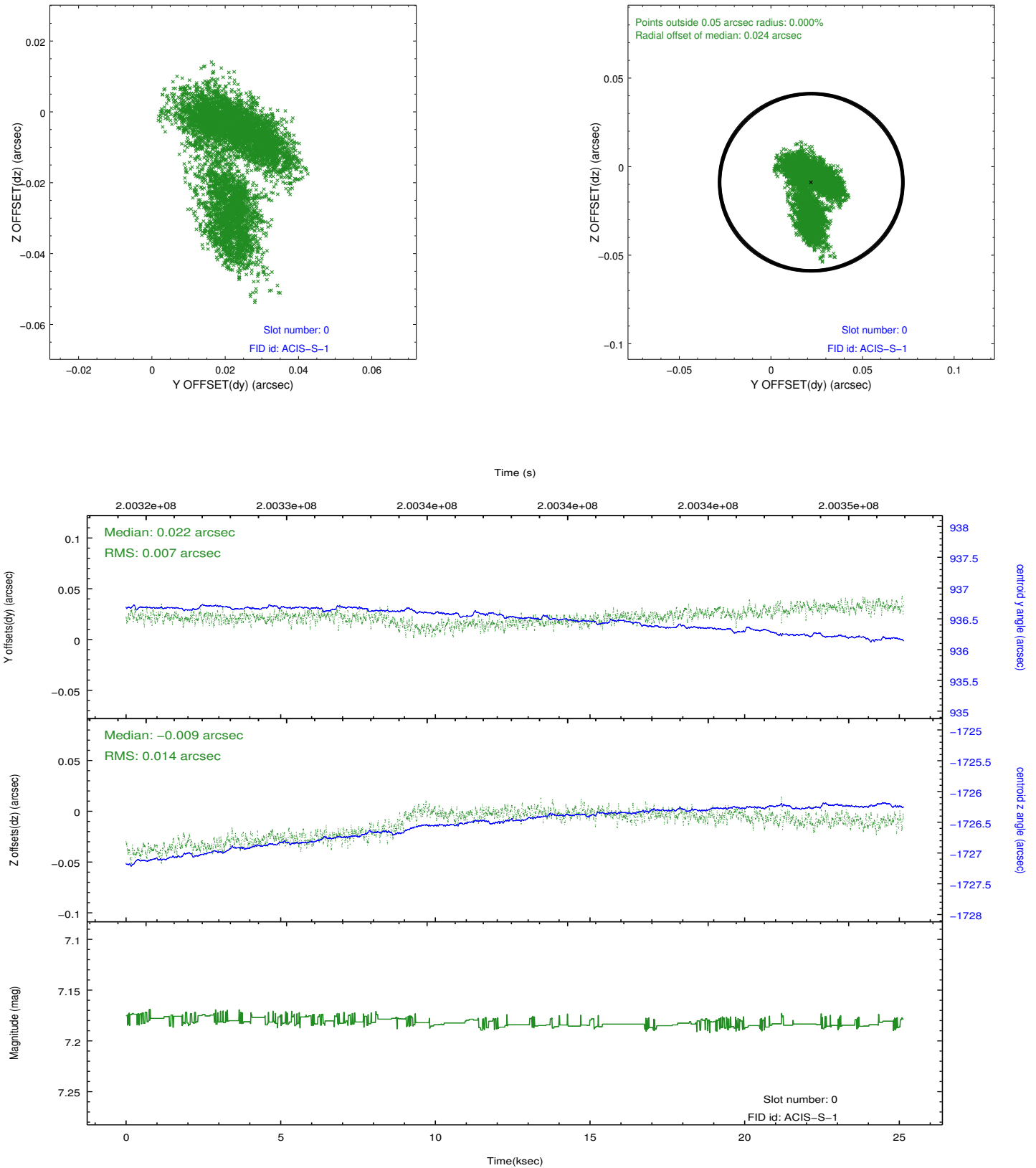


2.4.5 Slot 7

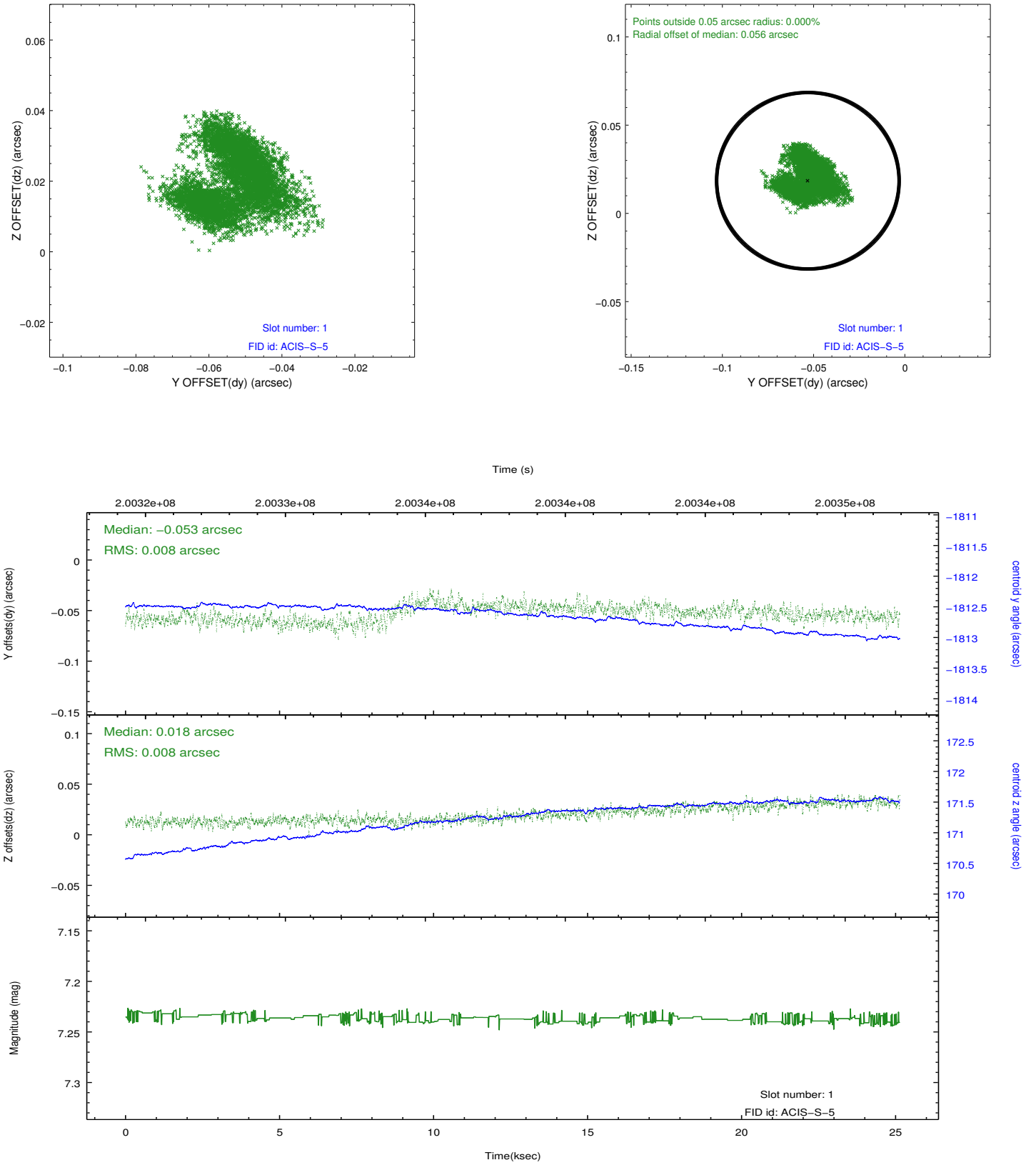


2.5 FID Slots

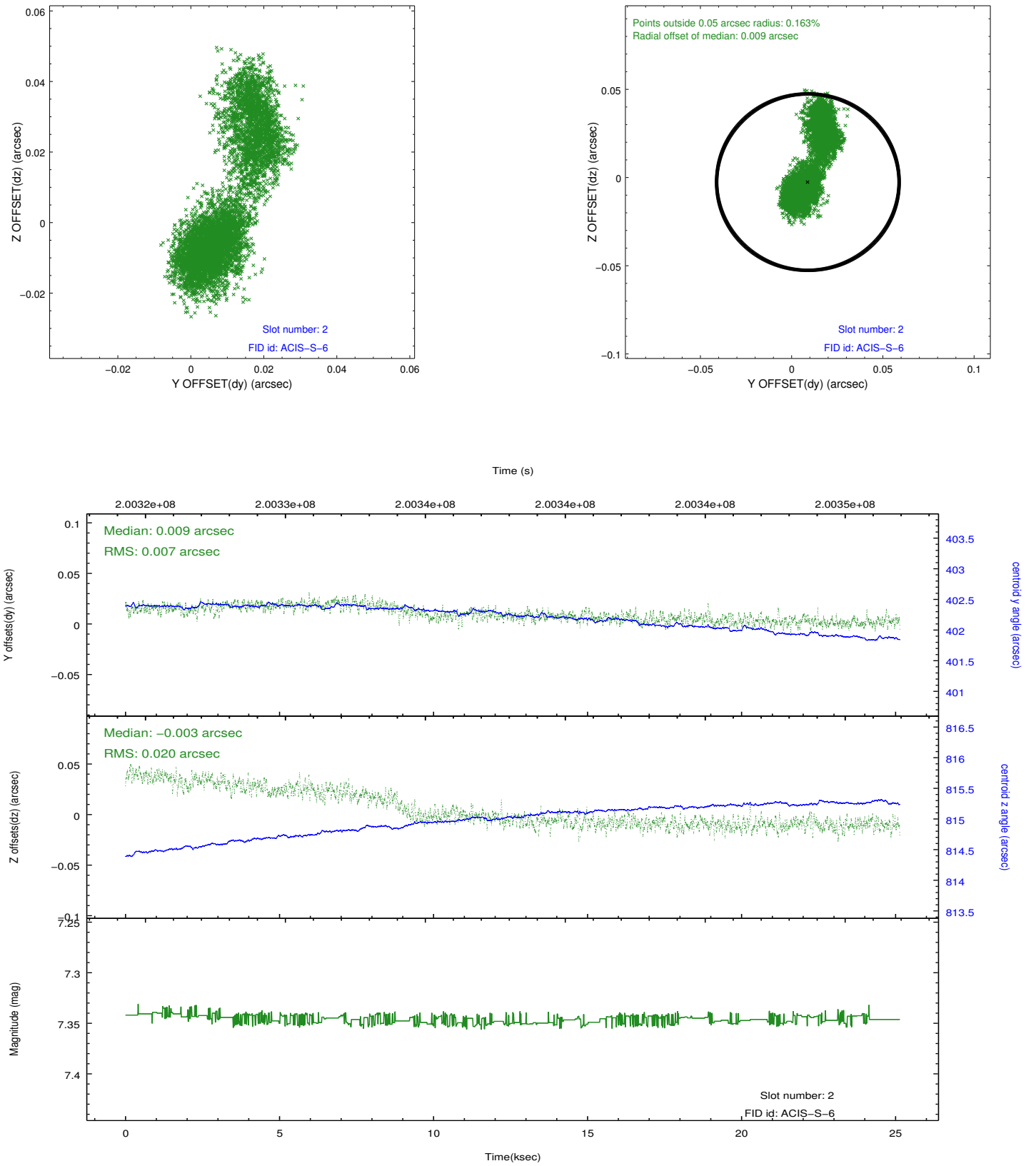
2.5.1 Slot 0



2.5.2 Slot 1



2.5.3 Slot 2



A Summary

A.1 Status

V&V Scientist	Jen Lauer
V&V Date (YYYY-MM-DD)	2012.12.17
V&V Edition	1
V&V Disposition and Status	OK
V&V Charge Time	25.132

A.2 Comments

Monitor constraint met.