

# V&V Reference Report

## L2 ASCDS Version : 7.6.7.2

Observation 4483 - L2 Version 001  
Chandra X-Ray Center

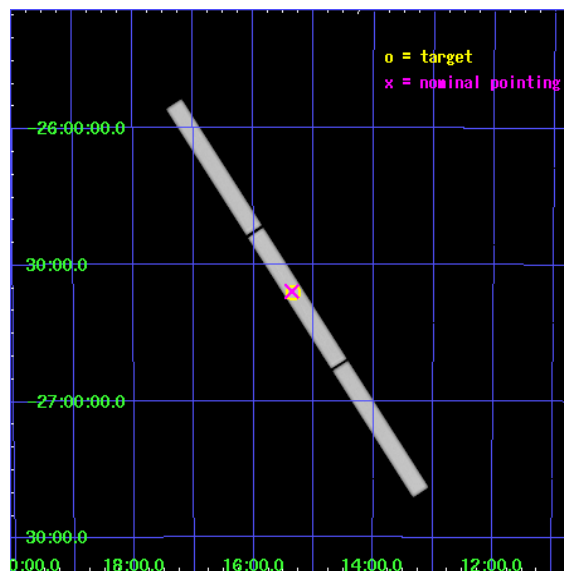
L2 Processing Date : May 15 2006

## Contents

<b>1</b>	<b>Front</b>	<b>2</b>
<b>2</b>	<b>OBI</b>	<b>3</b>
2.1	OBI . . . . .	3
2.1.1	Images . . . . .	3
2.1.2	Parameters . . . . .	4
2.1.3	Events . . . . .	4
2.2	Compared Parameters . . . . .	5
2.3	Aspect . . . . .	6
2.4	Star Slots . . . . .	9
2.4.1	Slot 3 . . . . .	9
2.4.2	Slot 4 . . . . .	10
2.4.3	Slot 5 . . . . .	11
2.4.4	Slot 6 . . . . .	12
2.4.5	Slot 7 . . . . .	13
2.5	FID Slots . . . . .	14
2.5.1	Slot 0 . . . . .	14
2.5.2	Slot 1 . . . . .	15
2.5.3	Slot 2 . . . . .	16
<b>3</b>	<b>Gratings</b>	<b>17</b>
3.1	LETG Arm . . . . .	17
<b>A</b>	<b>Summary</b>	<b>19</b>
A.1	Status . . . . .	19
A.2	Comments . . . . .	19

# 1 Front

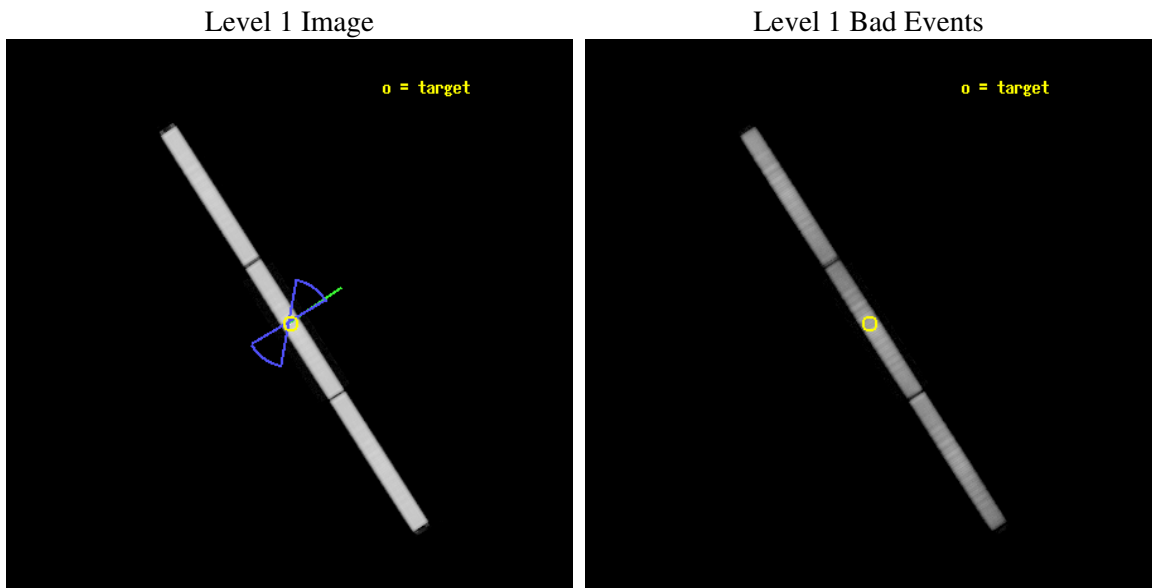
seq_num	200252
obs_id	4483
title	Resolving the 36 Oph and 70 Oph Binary Systems and Correlating Their Coronal Properties with Their Winds
observer	Dr. Brian Wood
object	36 Oph
ra_targ	258.8375
dec_targ	-26.602833
ra_nom	258.84042062822
dec_nom	-26.598999452949
roll_nom	57.068643337958
revision	2
ontime	77897.953441978
livetime	77801.130947389
l2events	3931326



## 2 OBI

### 2.1 OBI

#### 2.1.1 Images



### 2.1.2 Parameters

obi_num	0
ascdsver	7.6.7.2
caldbver	3.2.2
date	2006-05-15T01:41:21
revision	2

sched_exp_time	77712.000000
ontime	77900.003442019
l1events	5869472

### 2.1.3 Events

Level 1 Events

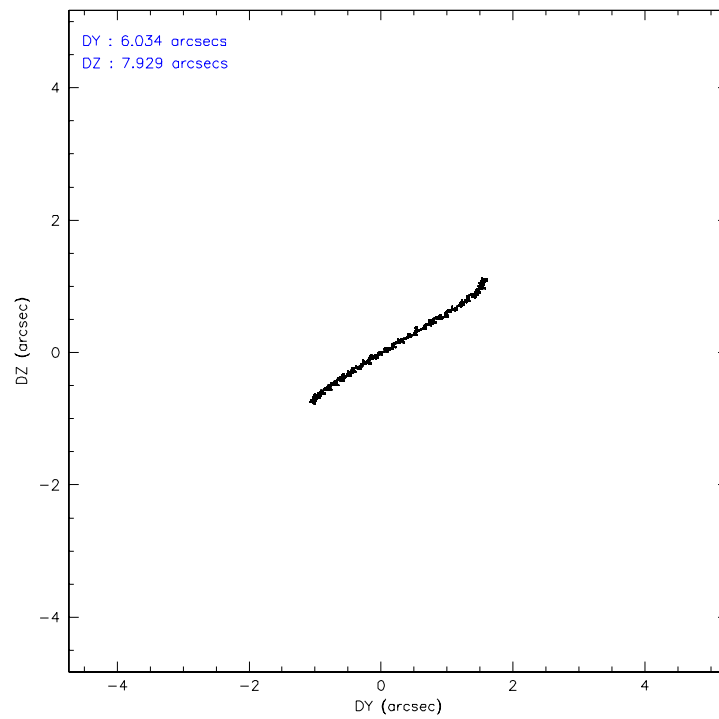
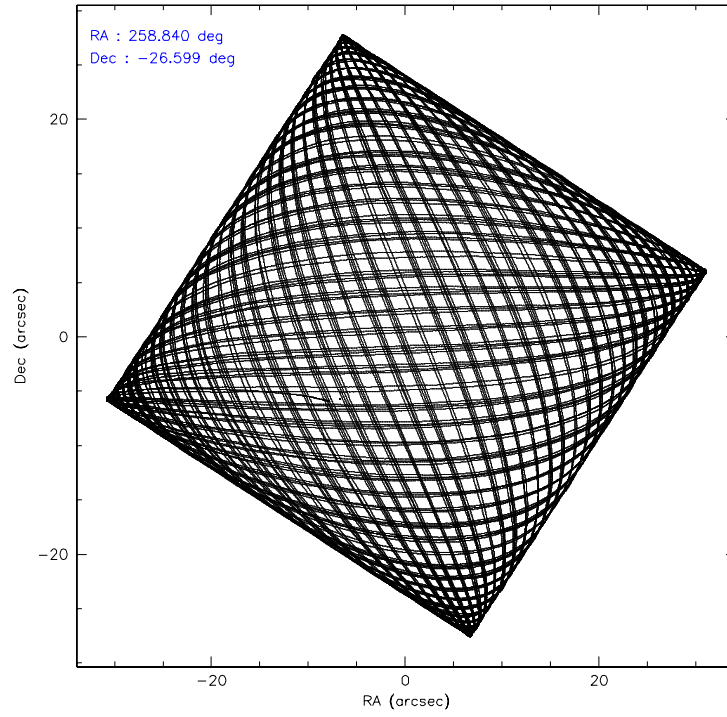
	<b>segment 1</b>	<b>segment 2</b>	<b>segment 3</b>
level 1 events	1967473	1929098	1972901
rejected events	418091	458302	506520
rejected %	21%	23%	25%

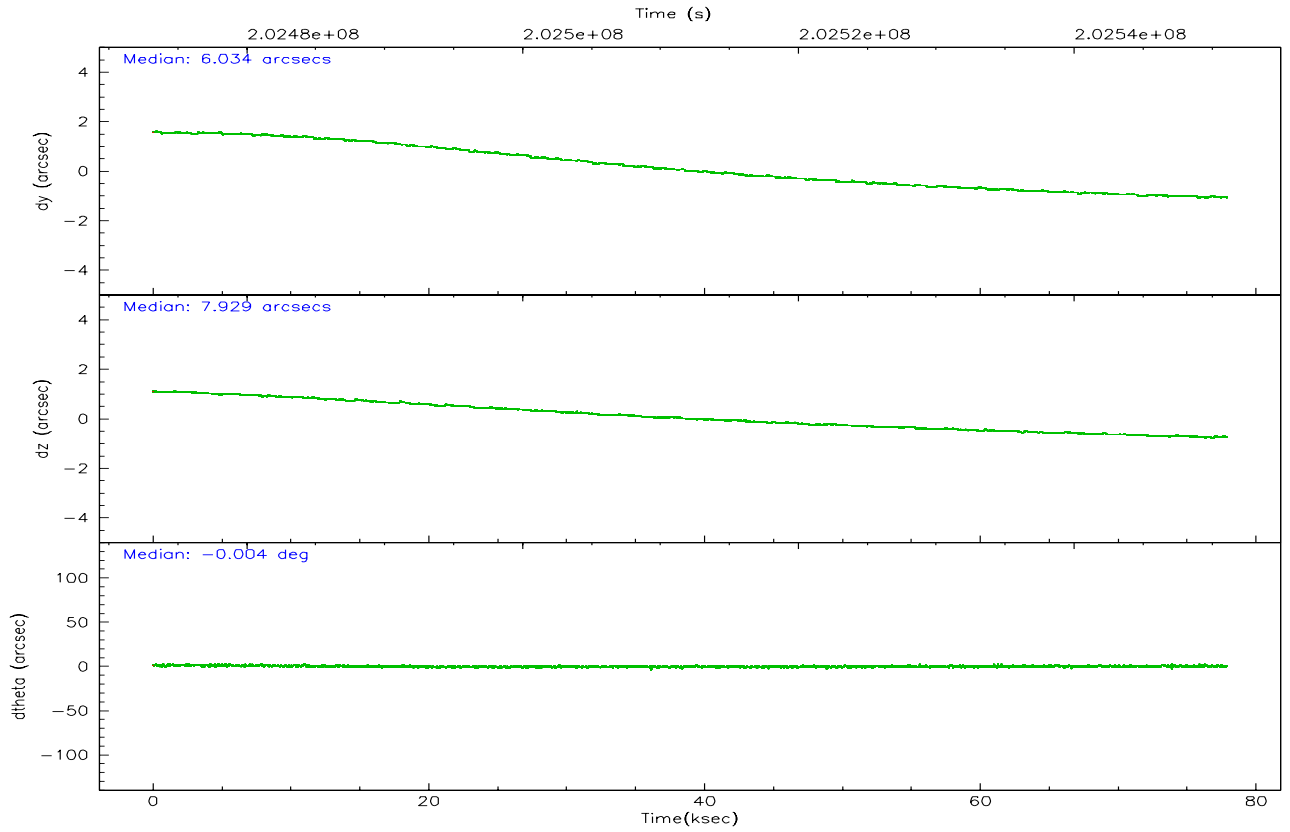
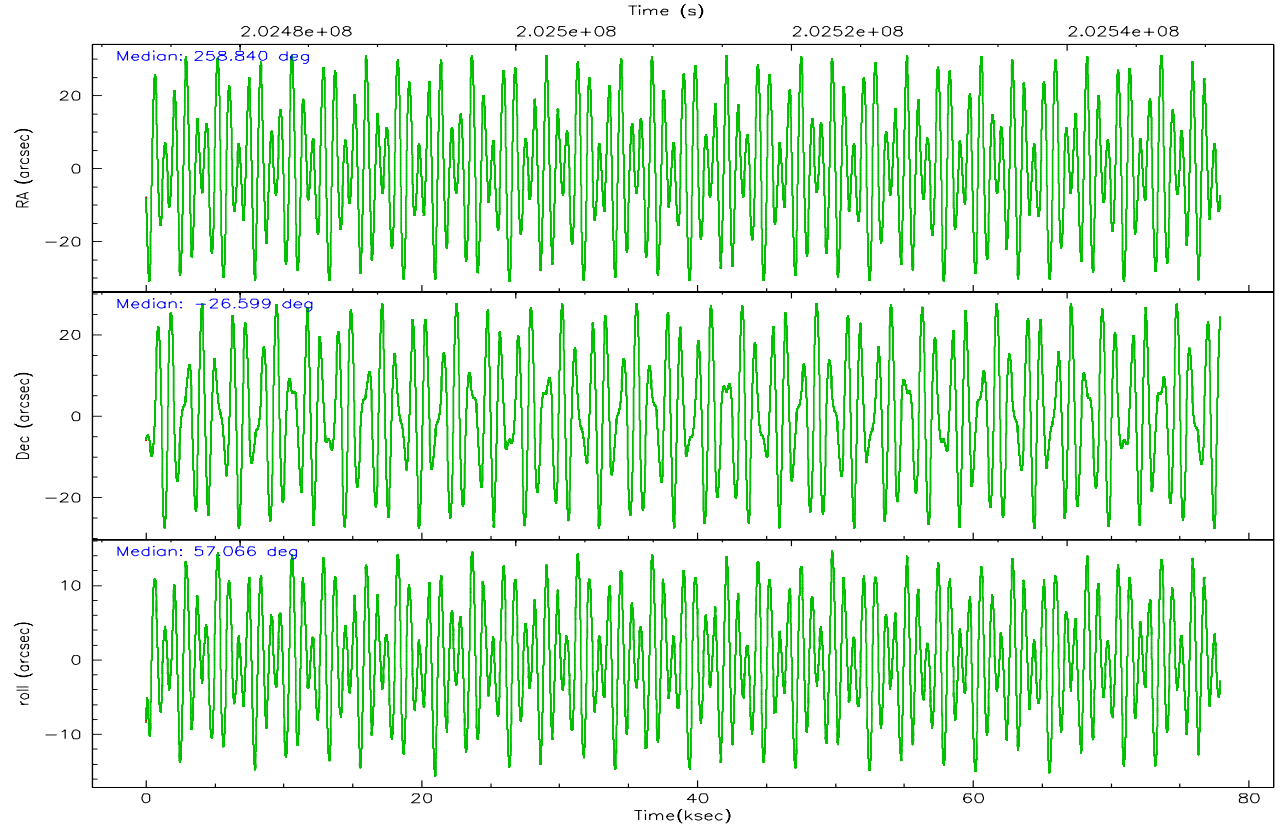


## 2.2 Compared Parameters

Parameter	Planned	Actual	Parameter	Planned	Actual
Instrument	HRC	HRC	Obspar format version number	6	6
Detector	HRC-S	HRC-S	Obspar file type	PREDICTED	ACTUAL
Grating	LETG	LETG	Obspar update status	NONE	UPDATED
Data mode	OBSERVING	OBSERVING			
Observation mode	POINTING	POINTING			
Pointing RA	258.840422	258.8404206282174			
Pointing Dec	-26.627575	-26.59899945294921			
Pointing Roll	57.001307	57.06864333795815			
Roll angle	35.000000	35.000000			
Roll tolerance	25.000000	25.000000			
Roll constraint allows 180D rotation	Y	Y			
SIM focus pos (mm)	-1.429586	-1.428180813131781			
SIM defocus (mm)	0.1037507710433287	0.1051558262725154			
SIM translation stage pos (mm)	250.455976	250.4635187648994			
SIM translation stage offset (mm)	0	-0.007540371344731511			
Observation start time	202473391.184000	202472617.56338			
Observation start date	2004-06-01T10:35:27	2004-06-01T10:23:37			
Observation end time	202551103.184000	202551975.11688			
Observation end date	2004-06-02T08:10:39	2004-06-02T08:26:15			

## 2.3 Aspect



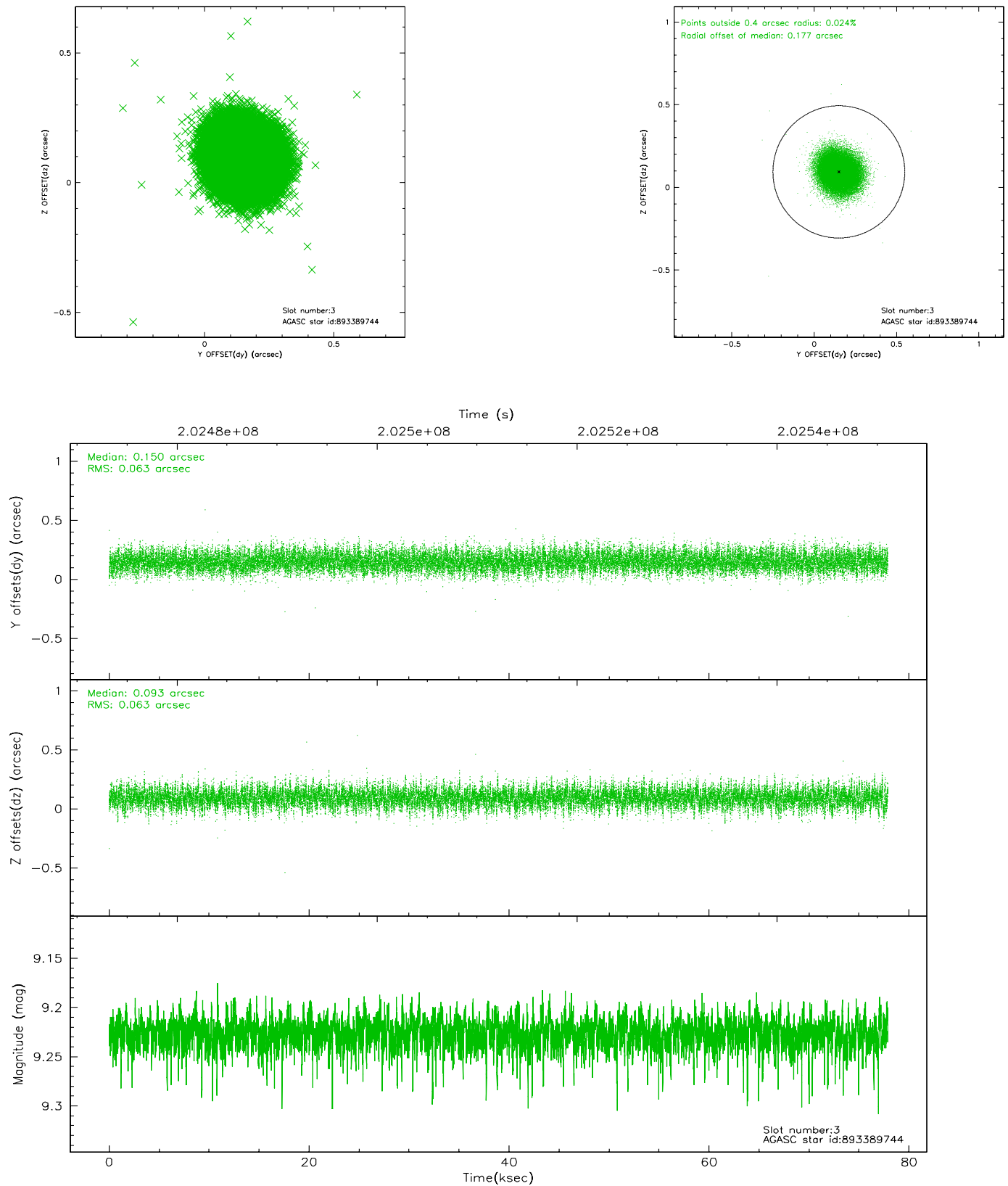


### Slot Statistics

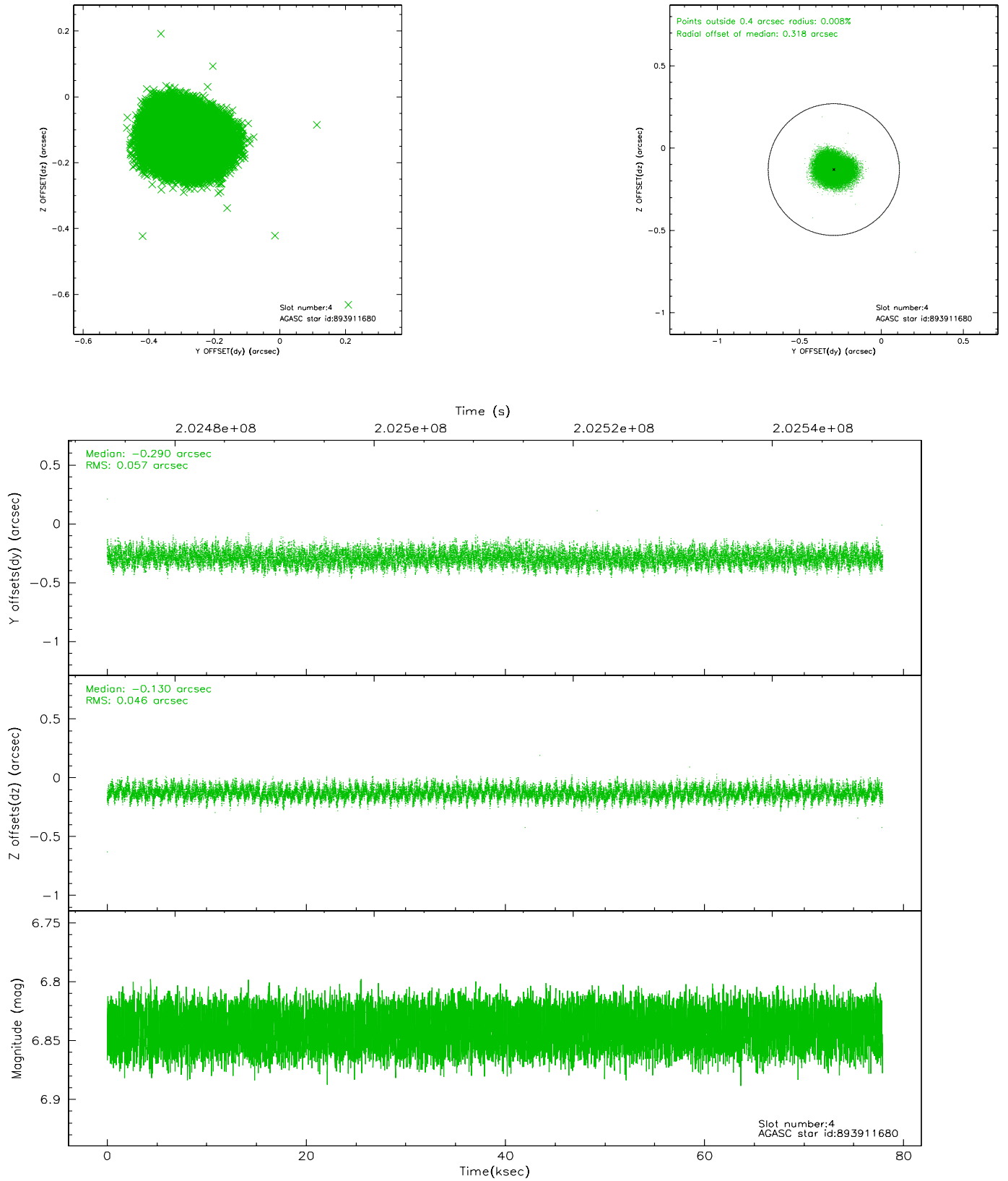
slot	status	id	mag	n_pts	med_dy	med_dz	dr1	dr2	ra	dec	mean_y	mean_z
0	FID	HRC-S-1	7.00	19000	0.110	-0.123	0.016	0.034	0.000000	0.000000	-1160.34	-456.56
1	FID	HRC-S-2	7.00	19001	0.149	-0.099	0.017	0.026	0.000000	0.000000	1239.32	-449.19
2	FID	HRC-S-3	7.02	19001	0.134	-0.082	0.023	0.044	0.000000	0.000000	-1162.99	572.99
3	GUIDE	893389744	9.23	37966	0.150	0.093	0.095	0.153	258.690487	-25.924083	1859.31	1786.35
4	GUIDE	893911680	6.84	38000	-0.290	-0.130	0.080	0.123	258.559371	-26.984417	-1569.37	55.75
5	GUIDE	893912880	9.30	37975	0.055	-0.042	0.080	0.132	259.042343	-26.261724	1459.36	170.24
6	GUIDE	893913896	9.50	37965	0.087	0.092	0.104	0.170	258.610127	-26.313357	543.52	1239.01
7	GUIDE	893386856	8.92	37985	-0.009	-0.015	0.104	0.160	258.323899	-26.169480	471.35	2295.97

## 2.4 Star Slots

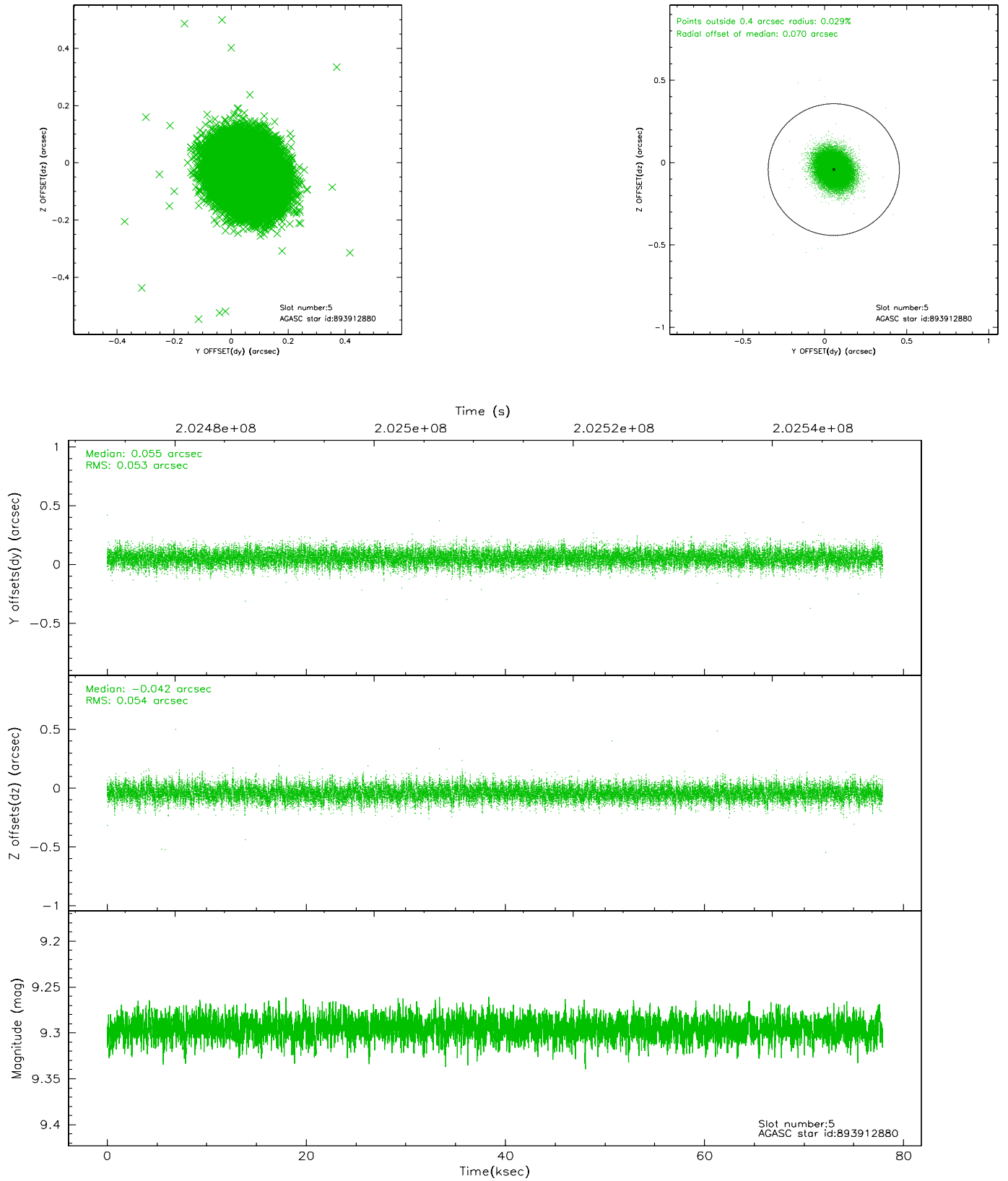
### 2.4.1 Slot 3



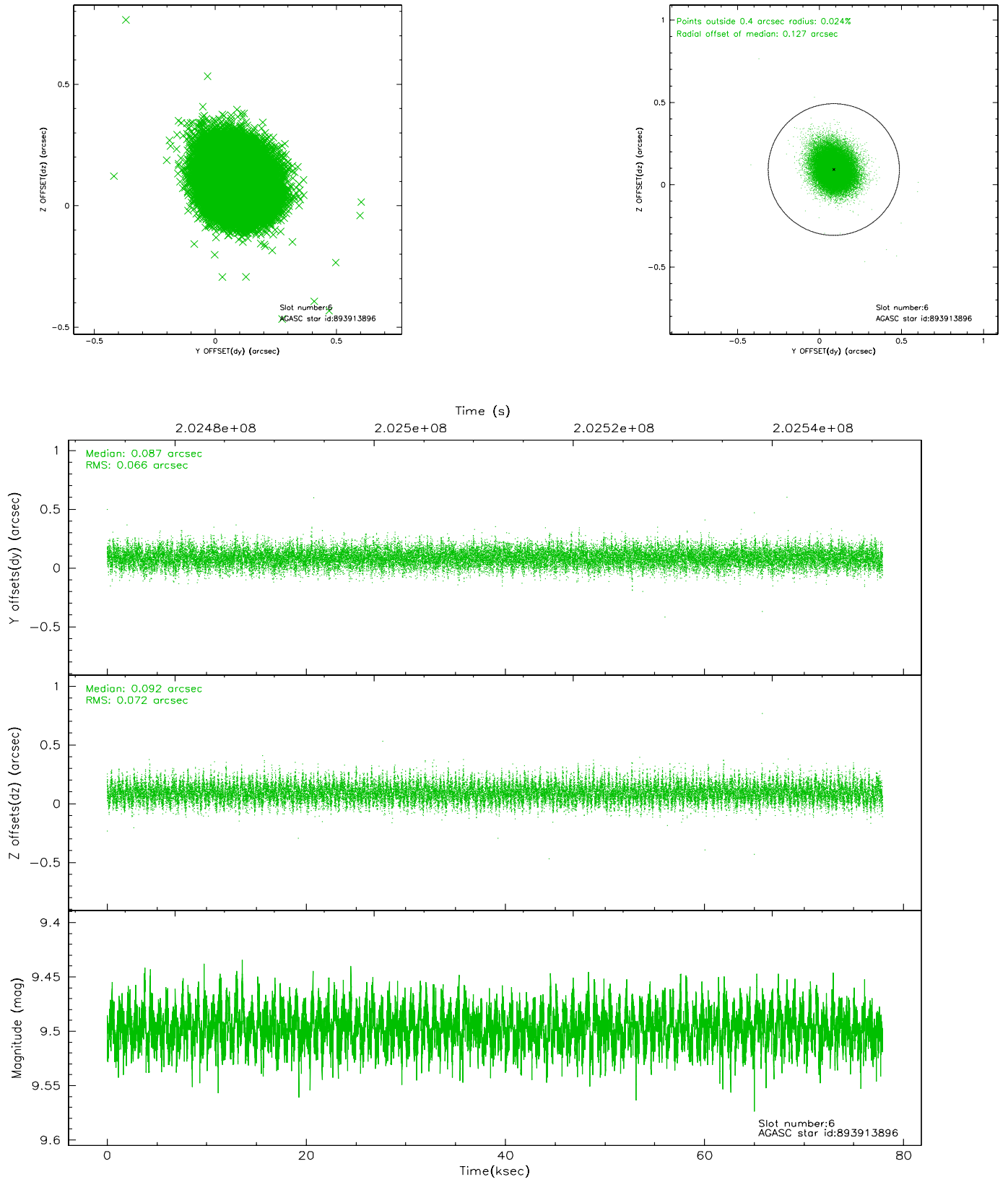
## 2.4.2 Slot 4



### 2.4.3 Slot 5

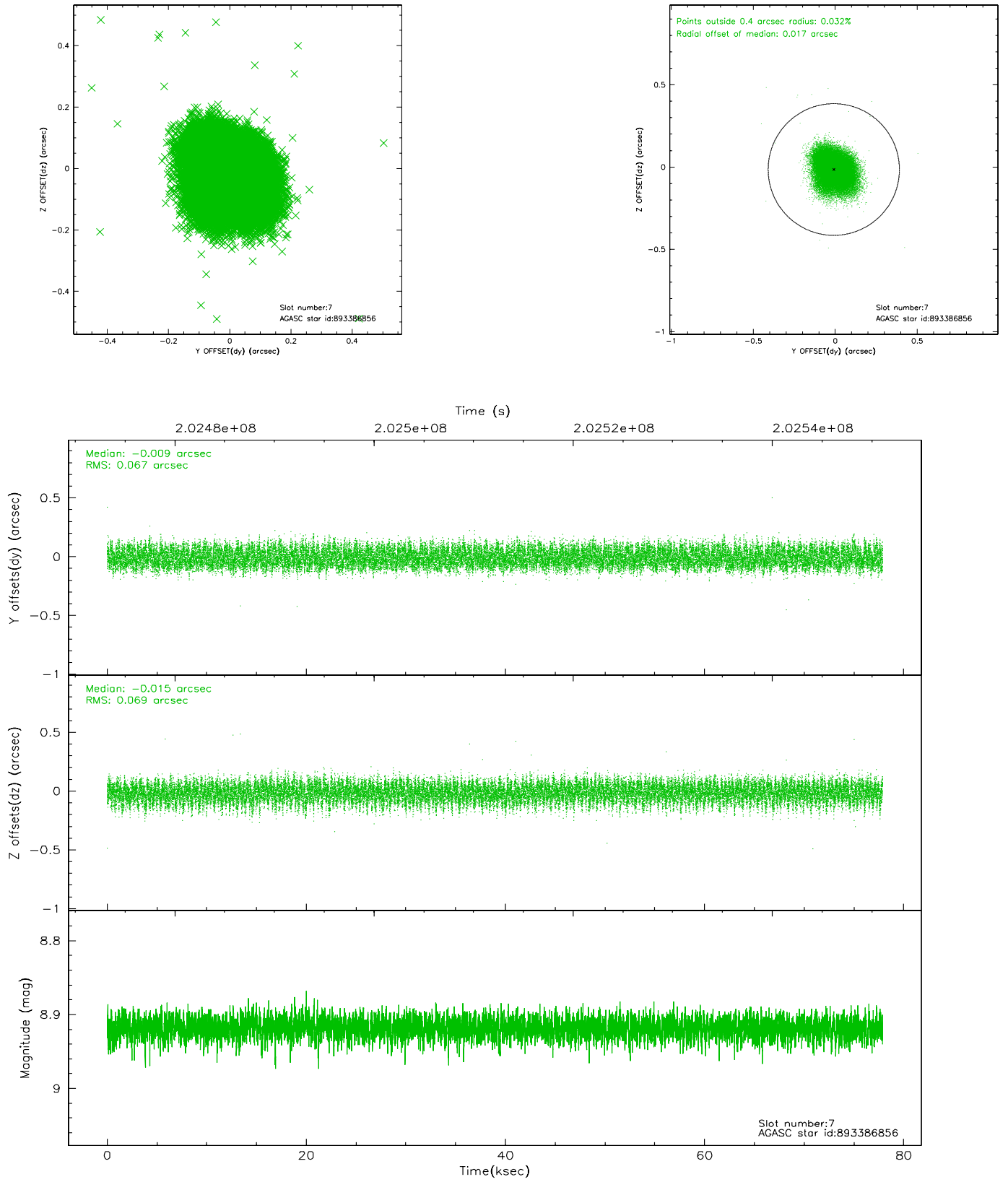


## 2.4.4 Slot 6



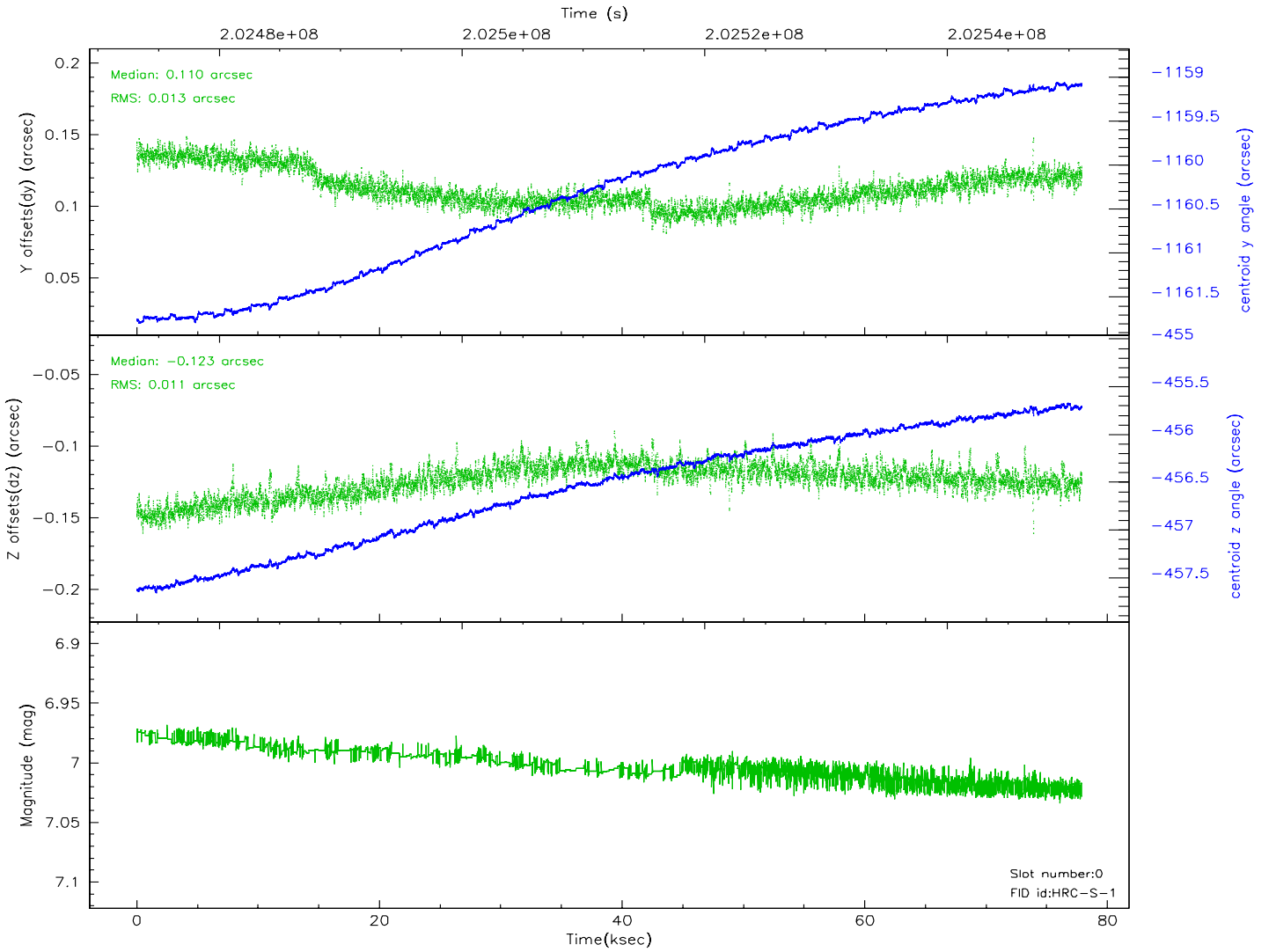
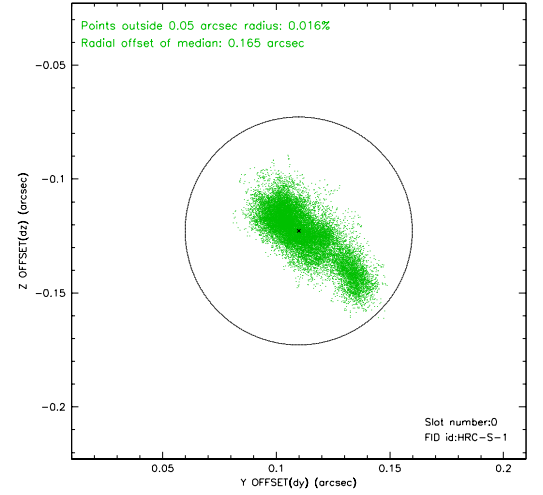
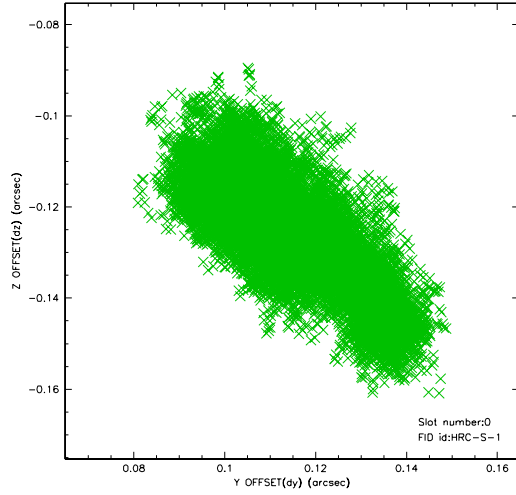


## 2.4.5 Slot 7

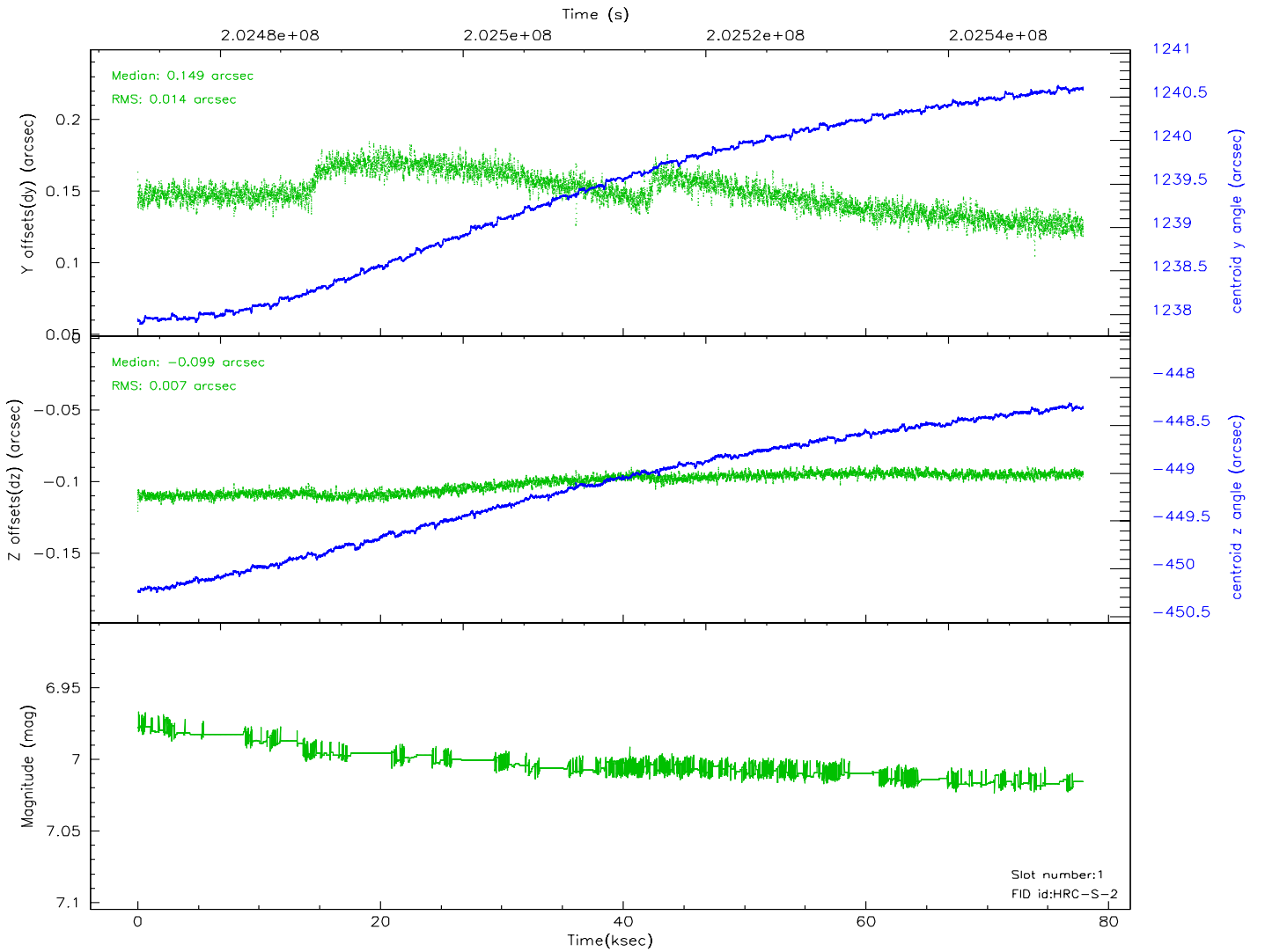
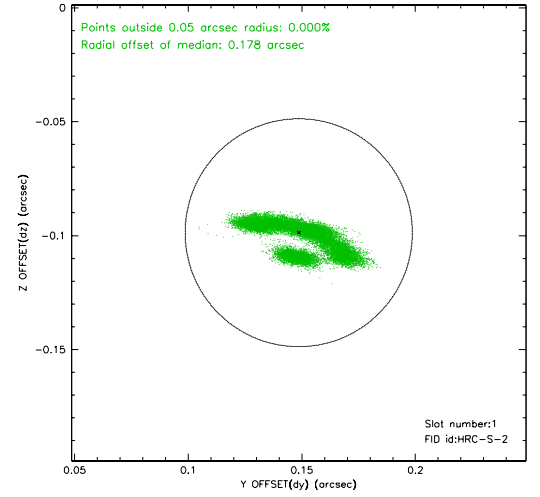
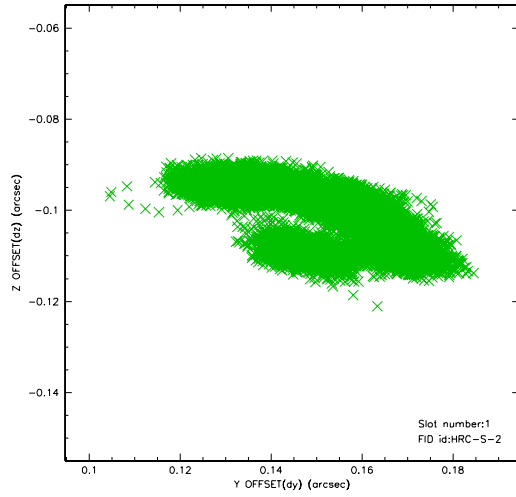


## 2.5 FID Slots

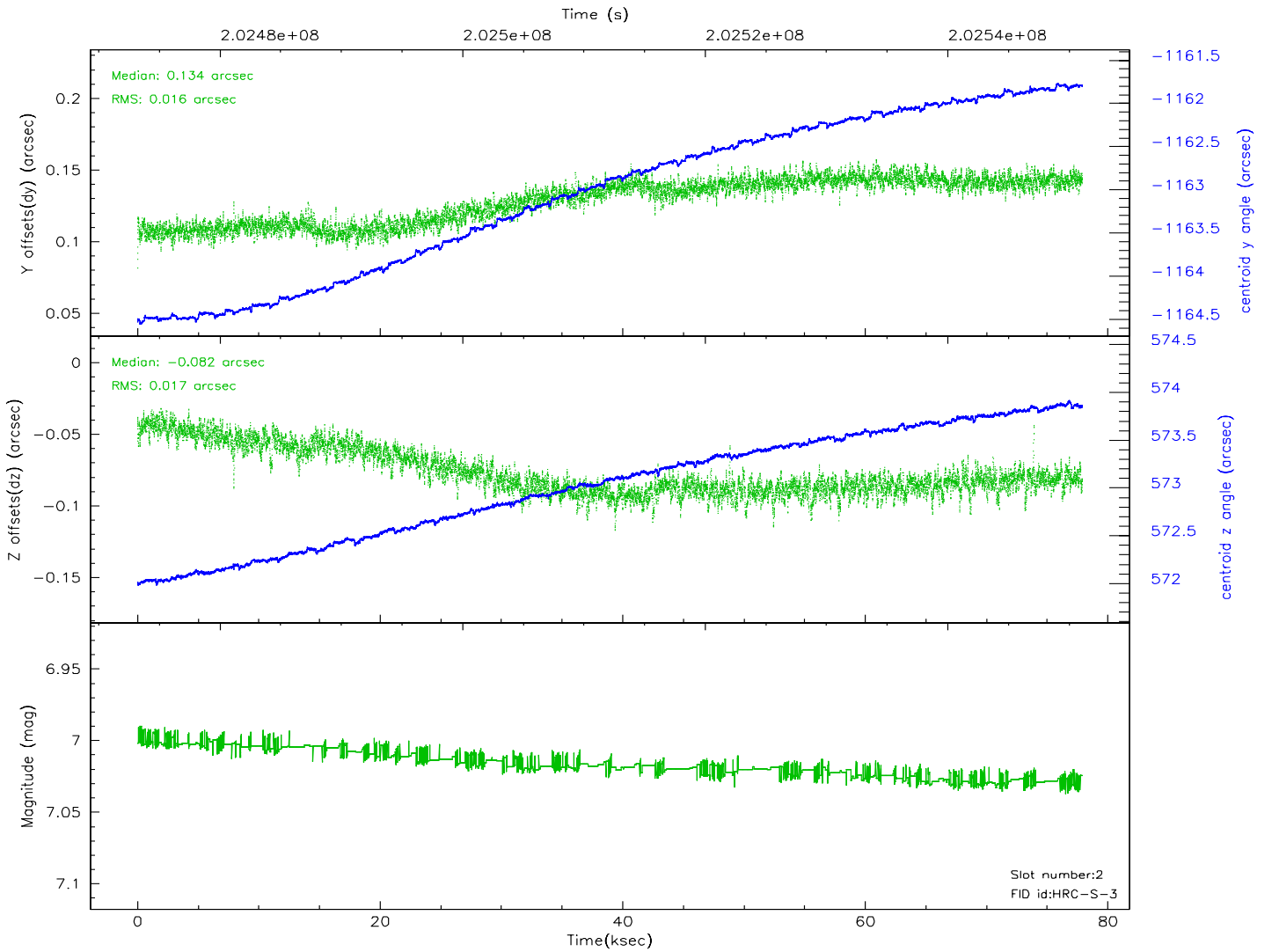
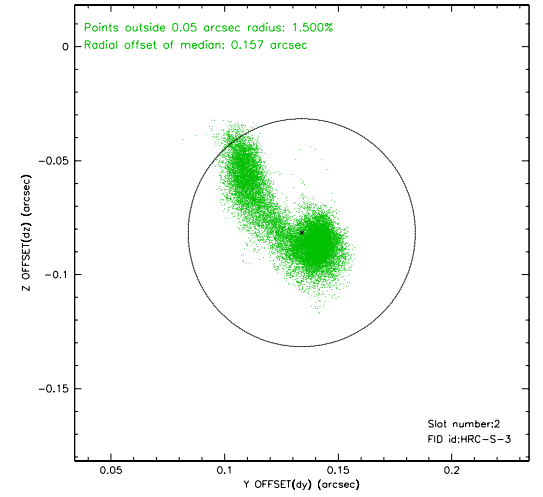
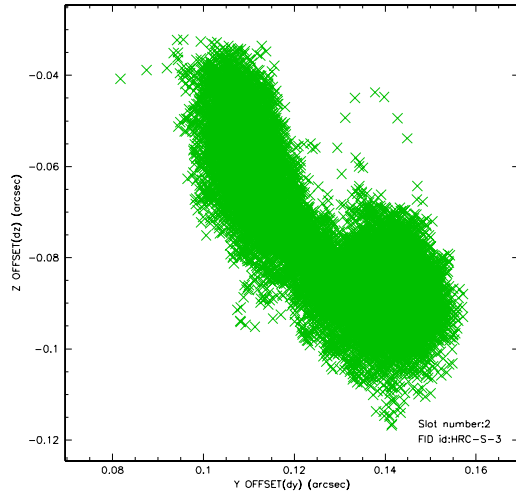
### 2.5.1 Slot 0



## 2.5.2 Slot 1

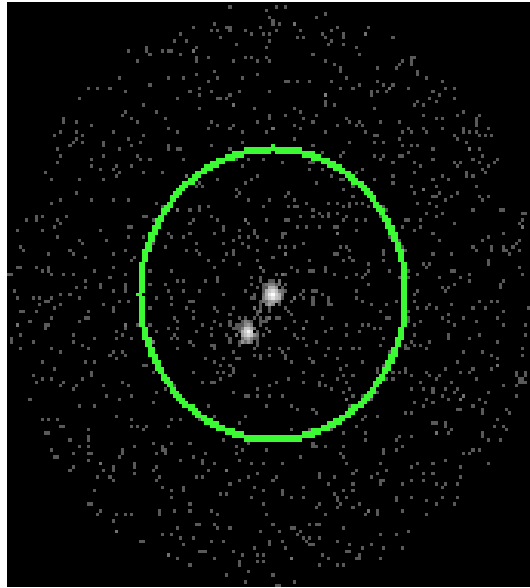


### 2.5.3 Slot 2



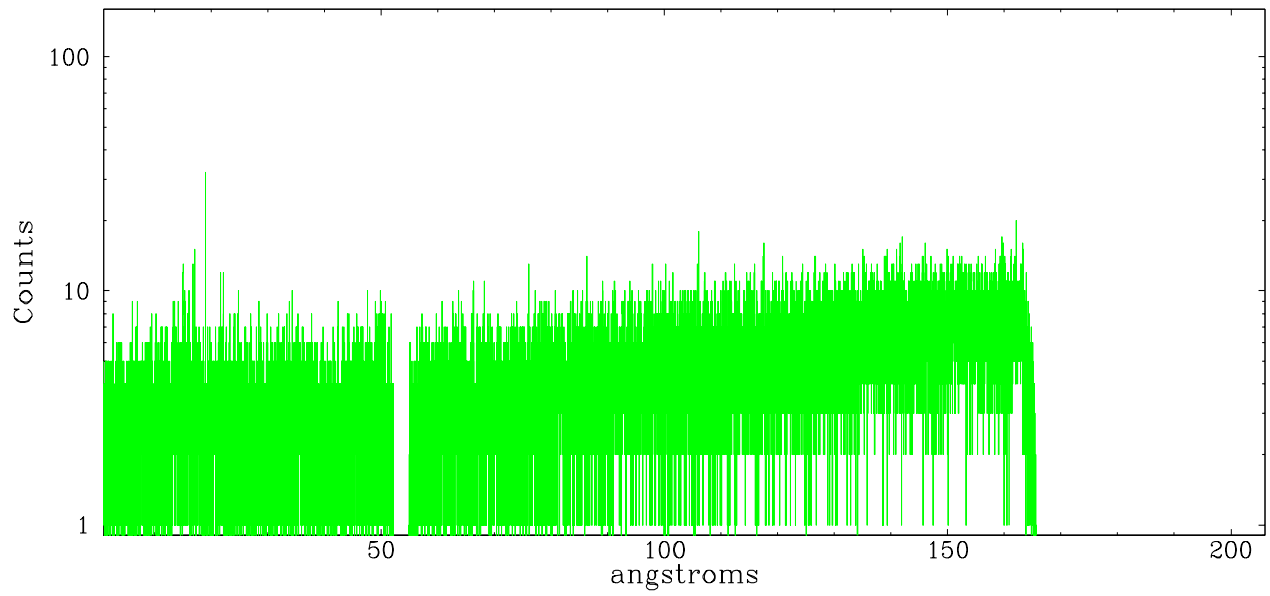
## 3 Gratings

### 3.1 LETG Arm

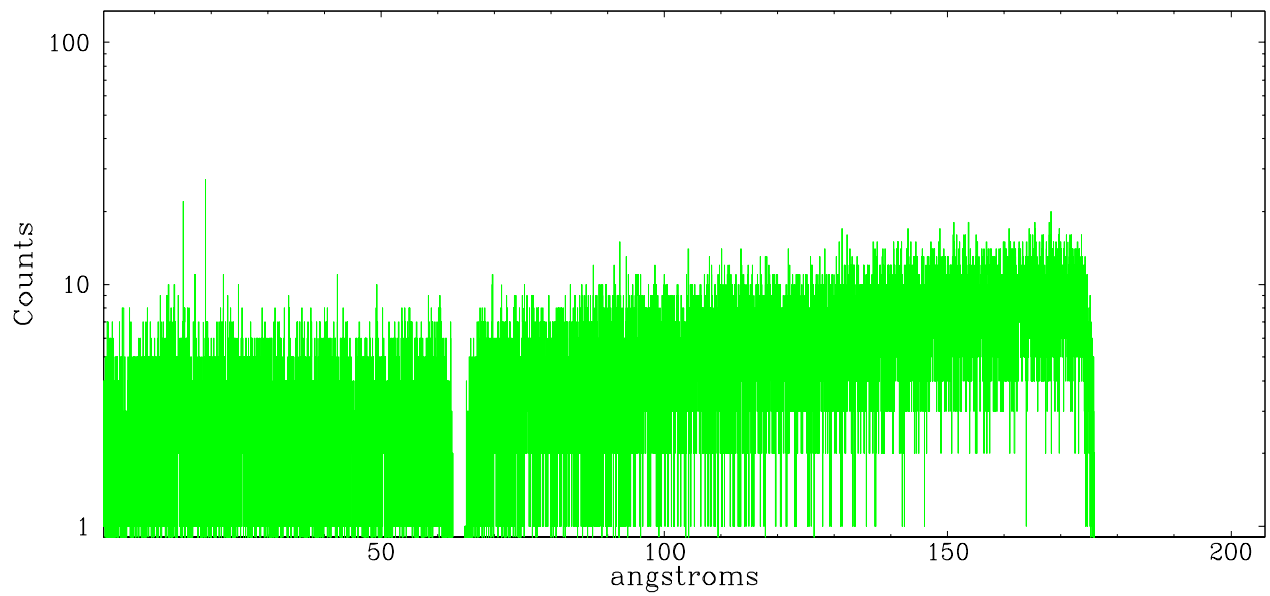


LETG Zero Order

leg order -1



leg order +1



# A Summary

## A.1 Status

V&V Scientist	Jen Lauer
V&V Date (YYYY-MM-DD)	2006.05.15
V&V Edition	1
V&V Disposition and Status	OK
V&V Charge Time	77.899

## A.2 Comments

Roll constraint met.

The keywords DTCOR, EXPOSURE, and LIVETIME in the Level 2 event file and the keyword DTCOR in the Level 1 event file have been incorrectly determined due to a software bug. The correct value of DTCOR can be found in the file DTFSTATS file that can be obtained by downloading the Secondary Data Products. In most cases, the difference between the correct DTCOR value and the incorrect DTCOR value in the Level 2 event file is very small and does not affect the data analysis. However, there are cases of significant differences and the user is advised to use the DTCOR in the DTFSTATS file for analysis. Corrected data products will be made available in the archive as soon as feasible.

The default pipeline spectral extraction results in co-added spectra for the binary system. Thus, the user will need to re-extract spectra using manually determined zeroth order positions and extraction regions.