

V&V Reference Report

L2 ASCDS Version : 7.6.9

Observation 4363 - L2 Version 001
Chandra X-Ray Center

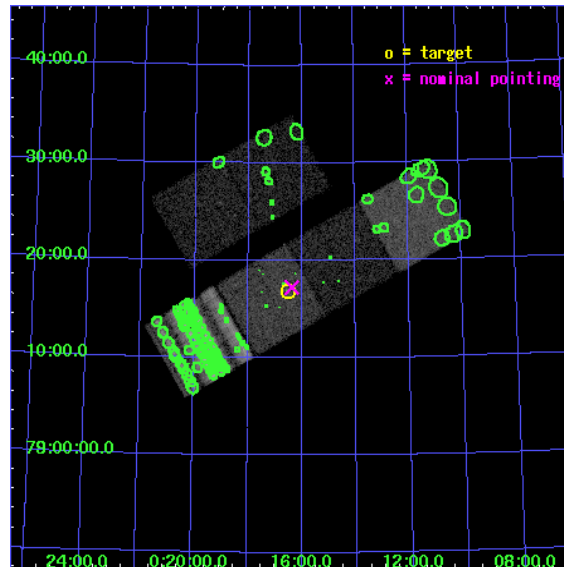
L2 Processing Date : Sep 28 2006

Contents

1	Front	2
2	OBI	3
2.1	OBI	3
2.1.1	Images	3
2.1.2	Bias	3
2.1.3	Parameters	4
2.1.4	Events	4
2.2	Compared Parameters	5
2.3	Aspect	6
2.4	Star Slots	9
2.4.1	Slot 3	9
2.4.2	Slot 4	10
2.4.3	Slot 5	11
2.4.4	Slot 6	12
2.4.5	Slot 7	13
2.5	FID Slots	14
2.5.1	Slot 0	14
2.5.2	Slot 1	15
2.5.3	Slot 2	16
3	Point Sources	17
A	Summary	18
A.1	Status	18
A.2	Comments	18

1 Front

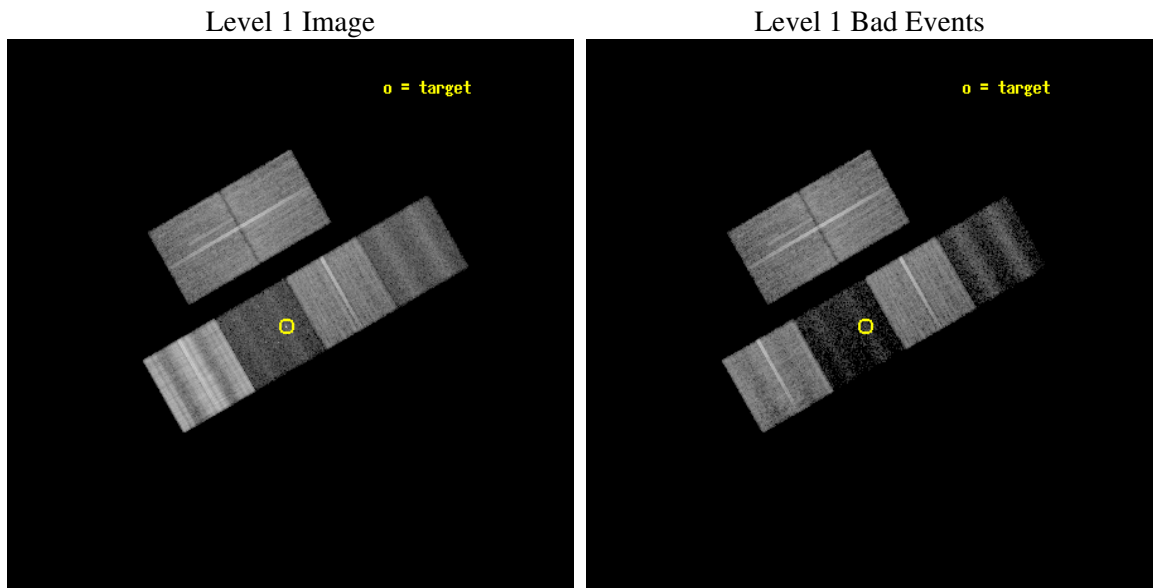
seq_num	700448
obs_id	4363
title	INVERSE COMPTON SCATTERING IN POWERFUL RADIO GALAXIES: CONSTRAINING THE ELECTRON SPECTRUM
observer	Dr. Gianfranco Brunetti
object	3C 6.1
dtcycle	0
cycle	P
ra_targ	4.131667
dec_targ	79.281111
ra_nom	4.0917769114216
dec_nom	79.287333488809
roll_nom	150.13580982114
revision	2
ontime	20153.599924922
livetime	19898.402907632
ontime2	20153.599924922
ontime3	20150.358964682
ontime5	20153.599924922
ontime6	20153.599924922
ontime7	20153.599924922
ontime8	20153.599924922
l2events	133472



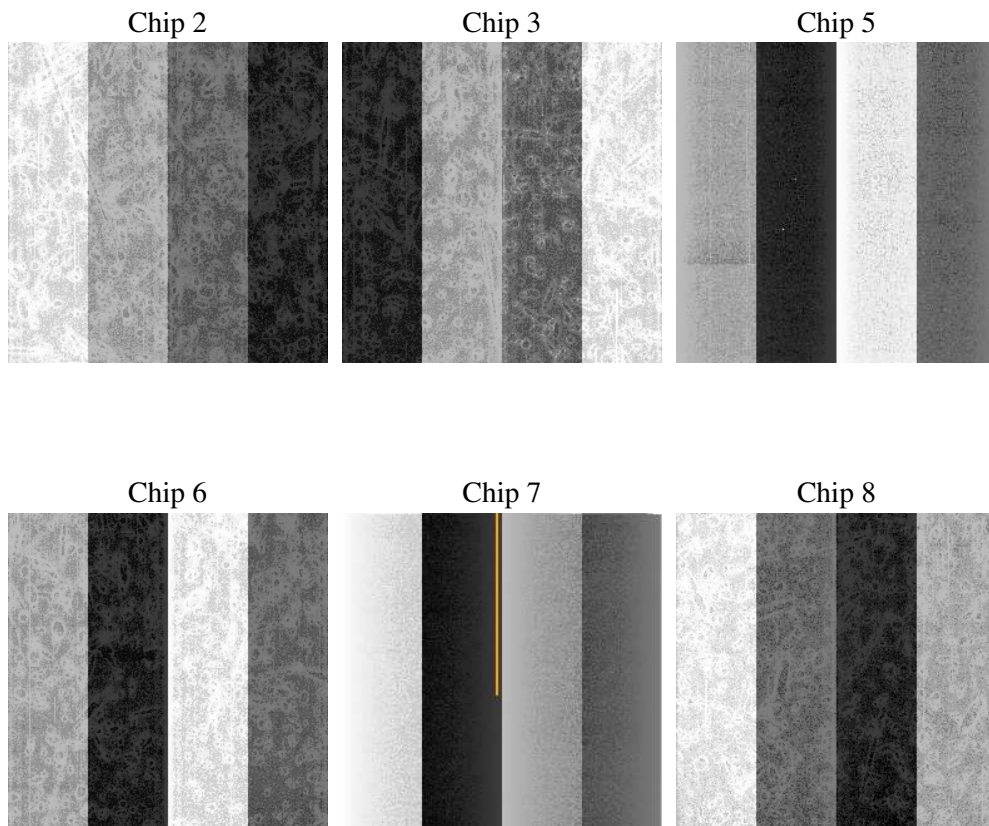
2 OBI

2.1 OBI

2.1.1 Images



2.1.2 Bias



2.1.3 Parameters

obi_num	2
ascdsver	7.6.9
caldbver	3.2.3
date	2006-09-28T19:47:25
revision	2

sched_exp_time	20000.000000
ontime	20181.705772519
ontime2	20181.705752641
ontime3	20178.464792401
ontime5	20181.705772519
ontime6	20181.705752641
ontime7	20181.705772519
ontime8	20181.705752641
l1events	671895

2.1.4 Events

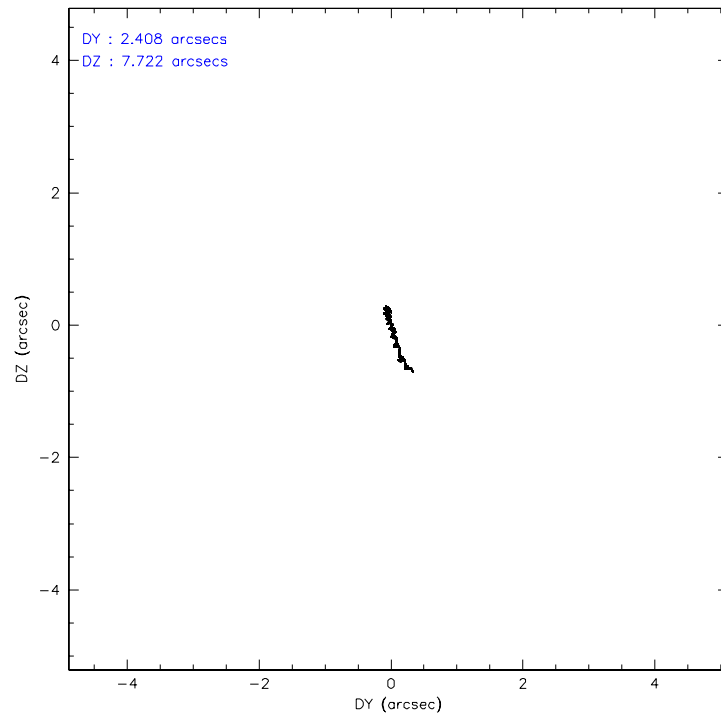
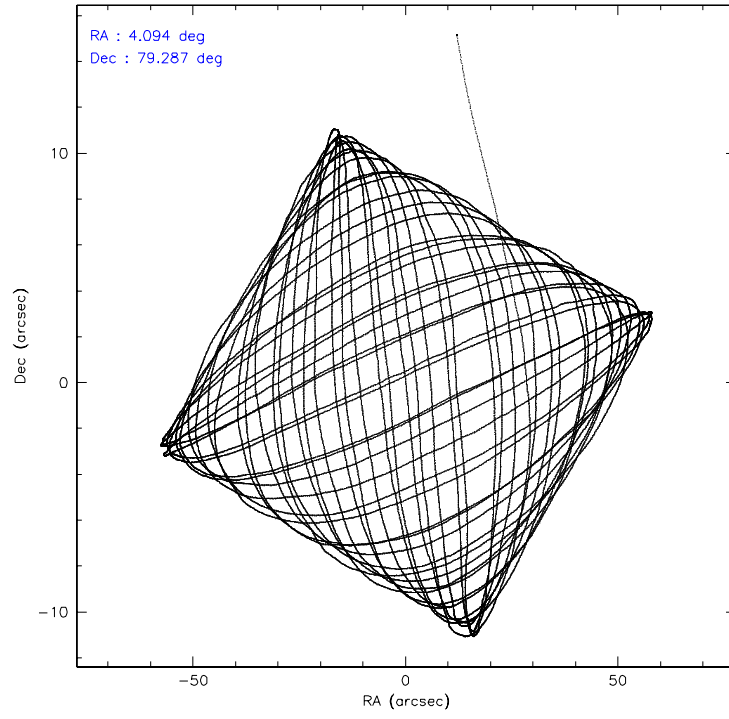
	ccd 2	ccd 3	ccd 5	ccd 6	ccd 7	ccd 8
level 1 events	123333	105000	47396	116217	29526	250423
rejected events	112797	97848	22326	105718	10838	105024
rejected %	91%	93%	47%	90%	36%	41%

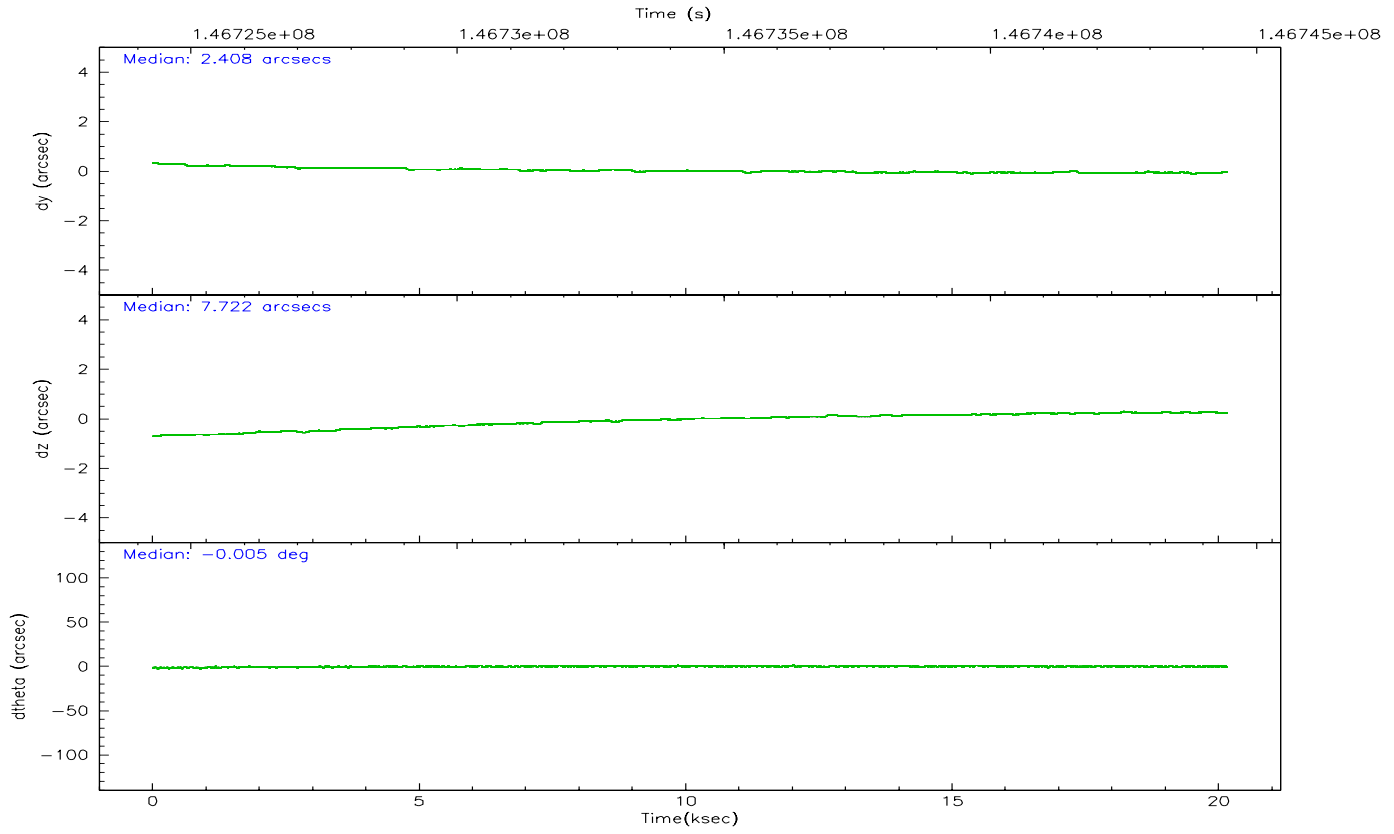
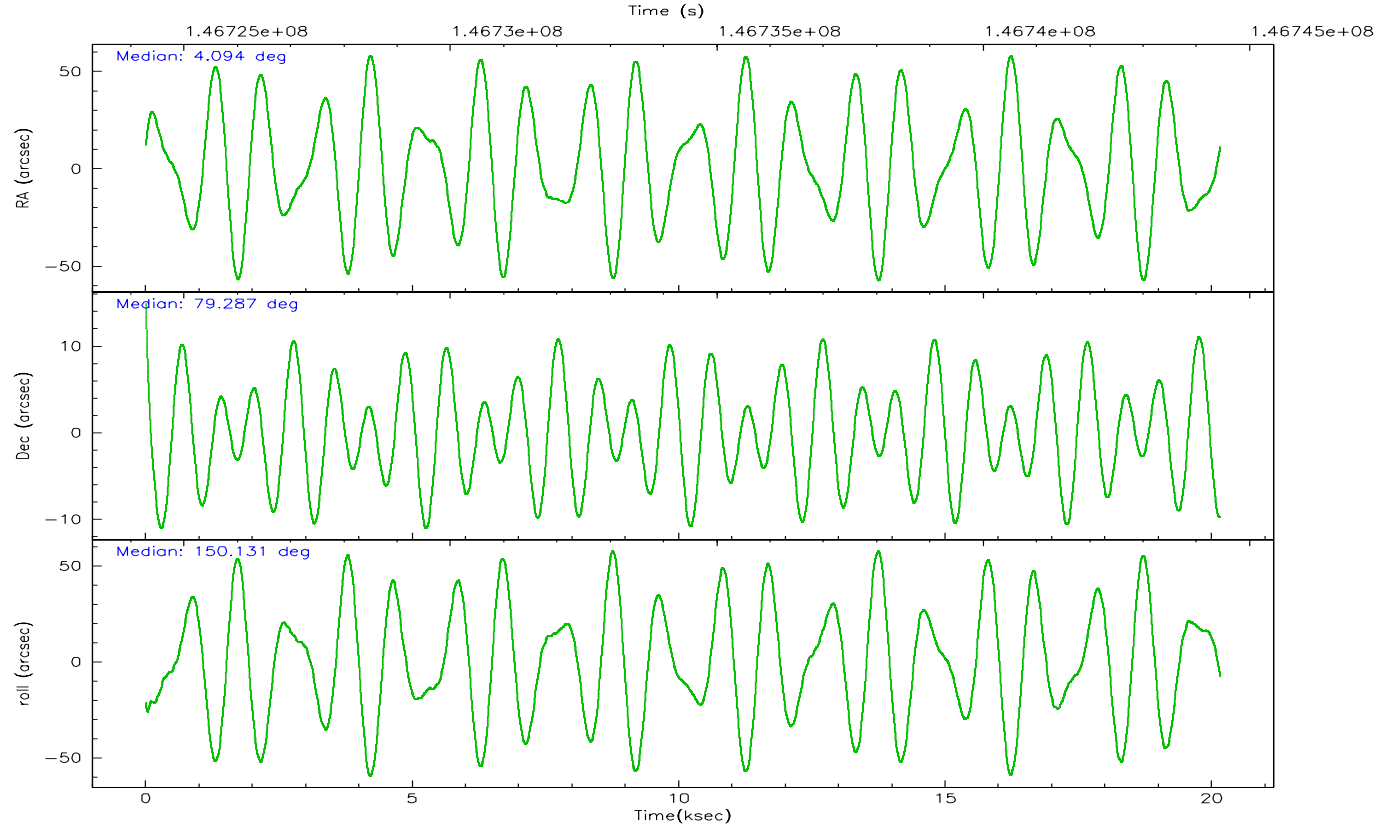
	ccd 2	ccd 3	ccd 5	ccd 6	ccd 7	ccd 8
grade 0 events	4578	3679	2216	5524	2571	41435
	3%	3%	4%	4%	8%	16%
grade 1 events	60	48	48	62	43	383
	0%	0%	0%	0%	0%	0%
grade 2 events	3033	1324	9128	2545	5171	17726
	2%	1%	19%	2%	17%	7%
grade 3 events	745	784	1087	819	1525	31612
	0%	0%	2%	0%	5%	12%
grade 4 events	1248	728	1109	840	1482	27646
	1%	0%	2%	0%	5%	11%
grade 5 events	703	659	2808	649	2051	2883
	0%	0%	5%	0%	6%	1%
grade 6 events	939	647	11558	774	7961	27112
	0%	0%	24%	0%	26%	10%
grade 7 events	112027	97131	19442	105004	8722	101626
	90%	92%	41%	90%	29%	40%

2.2 Compared Parameters

Parameter	Planned	Actual	Parameter	Planned	Actual
Instrument	ACIS	ACIS	Obspar format version number	6	6
Detector	ACIS-235678	ACIS-235678	Obspar file type	PREDICTED	ACTUAL
Grating	NONE	NONE	Obspar update status	NONE	UPDATED
Data mode	VFAINT	VFAINT	Number of optional ACIS chips dropped	0	0
Observation mode	POINTING	POINTING	On-chip summing requested	N	N
Pointing RA	4.238305	4.091776911421611	Subarray requested	NONE	NONE
Pointing Dec	79.287718	79.28733348880886	Alternating exposures requested	N	N
Pointing Roll	149.835223	150.1358098211361	Primary exposure time	0.000000	3.2
SIM focus pos (mm)	-0.684267	-0.6828225247311905			
SIM defocus (mm)	0	0.001444936568705701			
SIM translation stage pos (mm)	-190.132523	-190.1400660498719			
SIM translation stage offset (mm)	0	0.00754346686406393			
Observation start time	146724452.184000	146723381.78364			
Observation start date	2002-08-26T04:46:28	2002-08-26T04:29:41			
Observation end time	146744452.184000	146744872.44702			
Observation end date	2002-08-26T10:19:48	2002-08-26T10:27:52			
Read mode	TIMED	TIMED			

2.3 Aspect



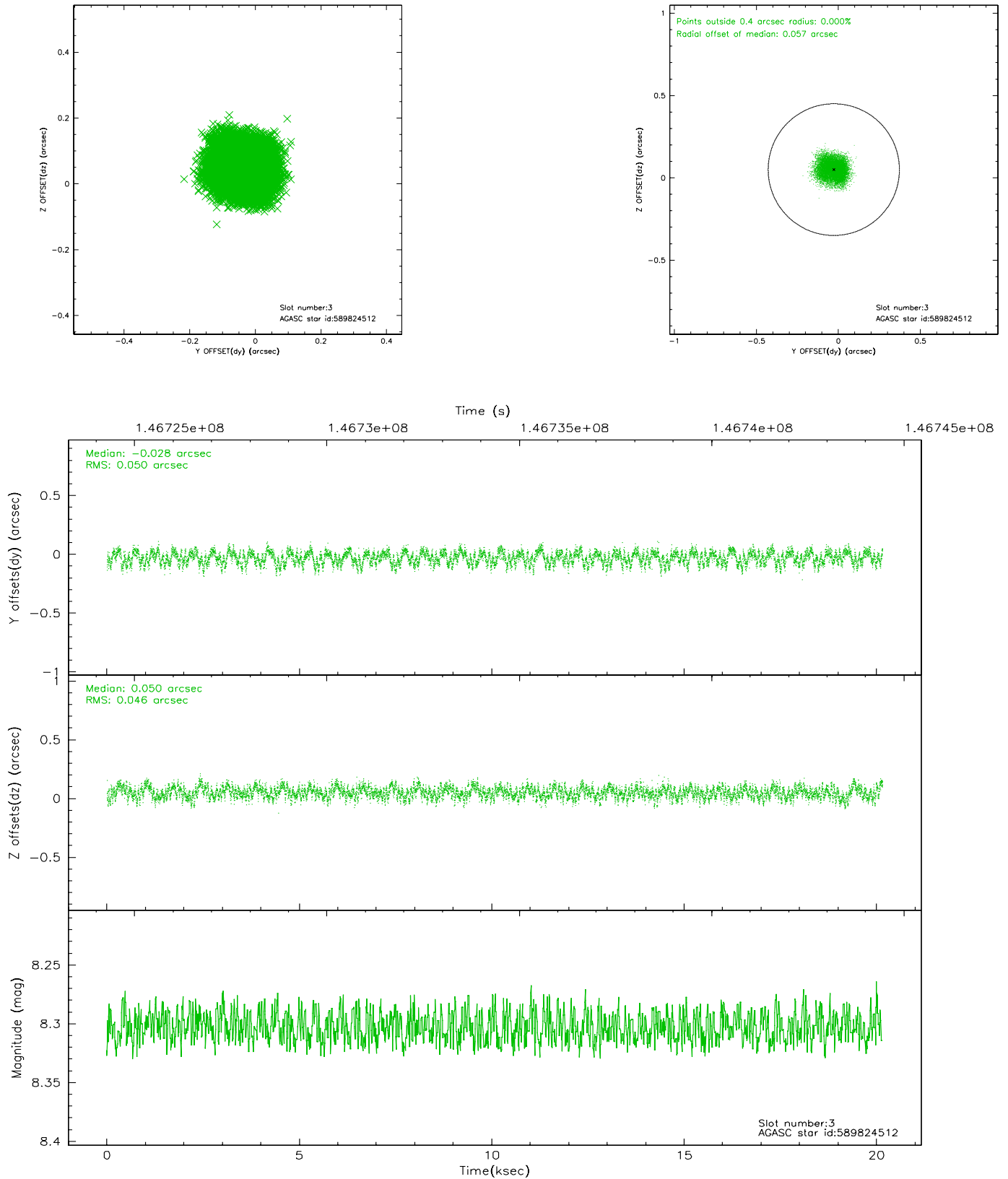


Slot Statistics

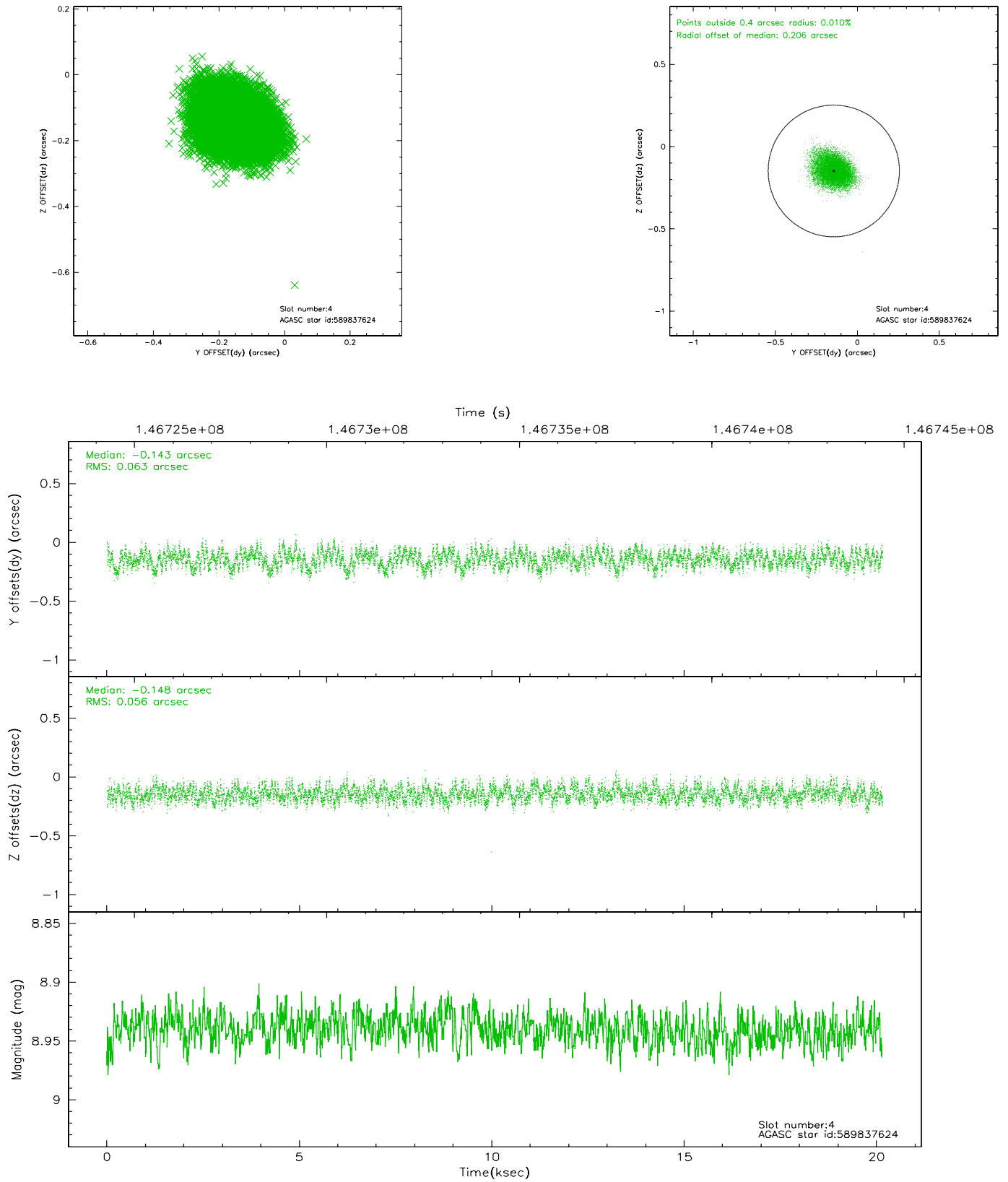
slot	status	id	mag	n_pts	med_dy	med_dz	dr1	dr2	ra	dec	mean_y	mean_z
0	FID	ACIS-S-1	7.19	4916	0.015	0.001	0.014	0.022	0.000000	0.000000	940.95	-1724.46
1	FID	ACIS-S-5	7.24	4917	0.022	0.037	0.007	0.012	0.000000	0.000000	-1807.90	172.99
2	FID	ACIS-S-6	7.36	4916	-0.058	-0.028	0.016	0.030	0.000000	0.000000	406.28	817.06
3	GUIDE	589824512	8.30	9831	-0.028	0.050	0.074	0.113	6.067443	79.539008	-568.05	-1398.46
4	GUIDE	589837624	8.94	9829	-0.143	-0.148	0.092	0.142	1.382205	78.951069	1119.27	1996.23
5	GUIDE	589319376	9.11	9828	0.050	-0.071	0.098	0.156	5.425379	78.479458	-2194.33	2080.01
6	GUIDE	604251920	9.38	9828	0.038	0.047	0.079	0.127	359.732431	78.985756	2191.74	2393.15
7	GUIDE	589827232	9.55	9820	0.085	0.115	0.085	0.140	7.115440	79.300655	-1613.00	-1046.36

2.4 Star Slots

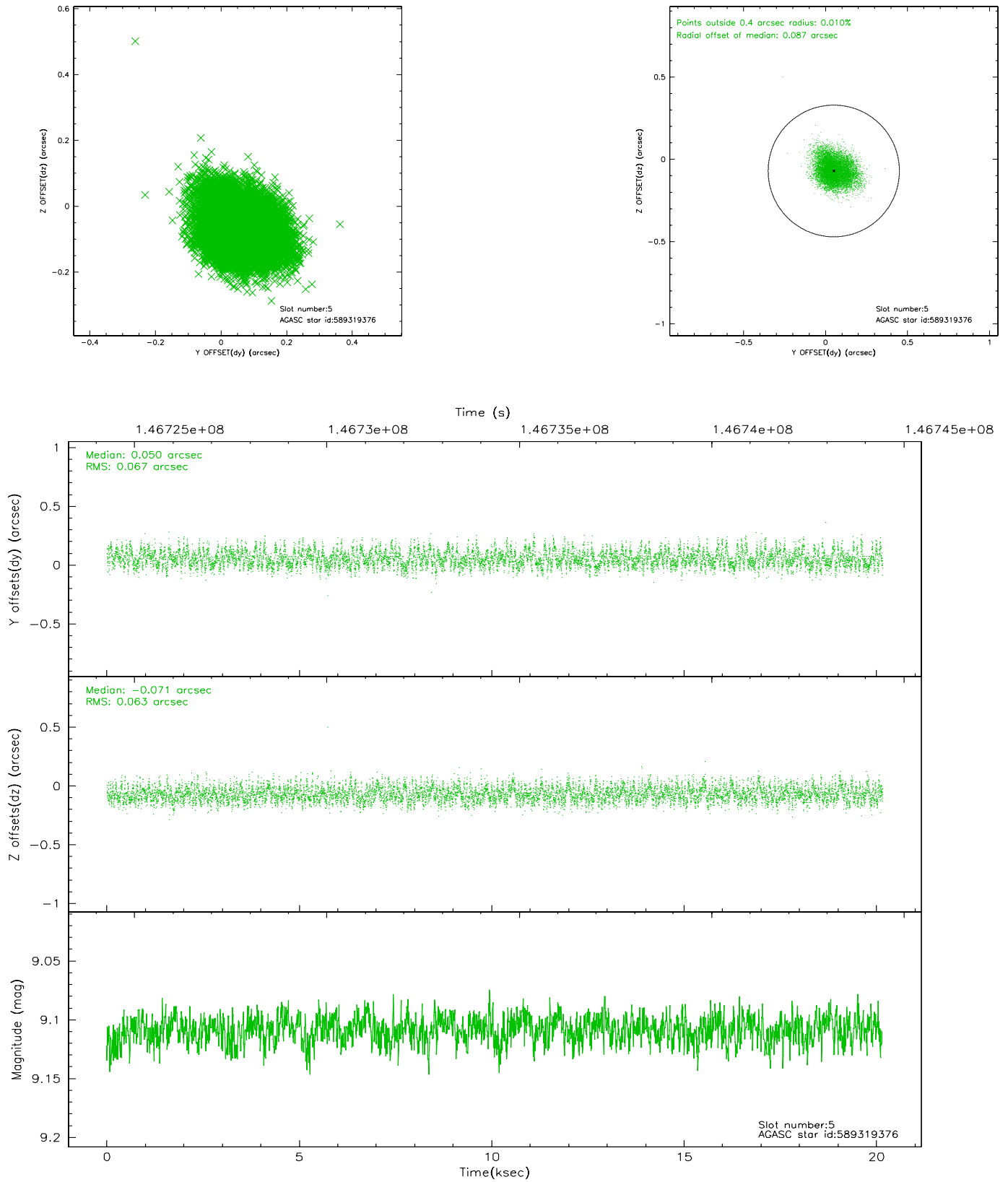
2.4.1 Slot 3



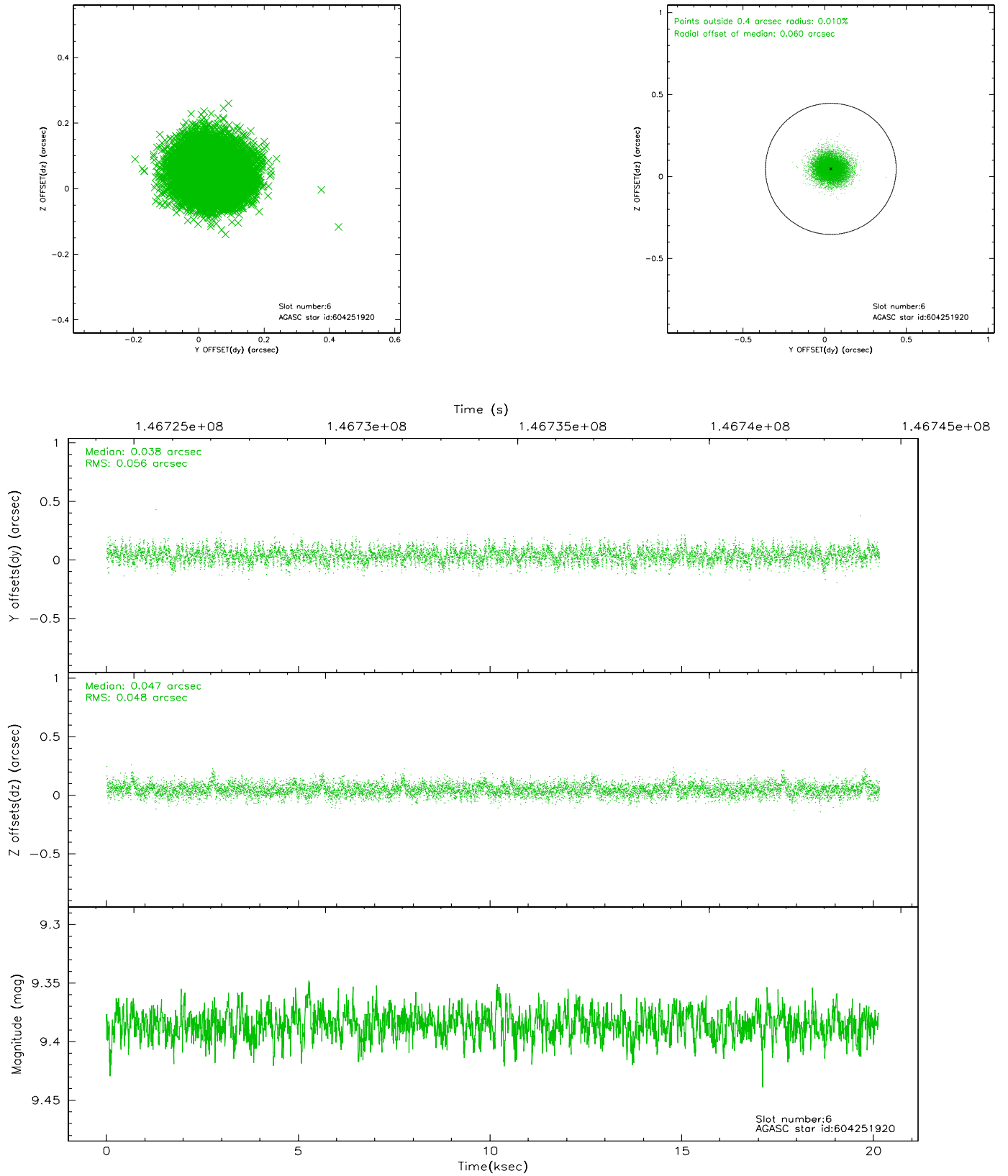
2.4.2 Slot 4



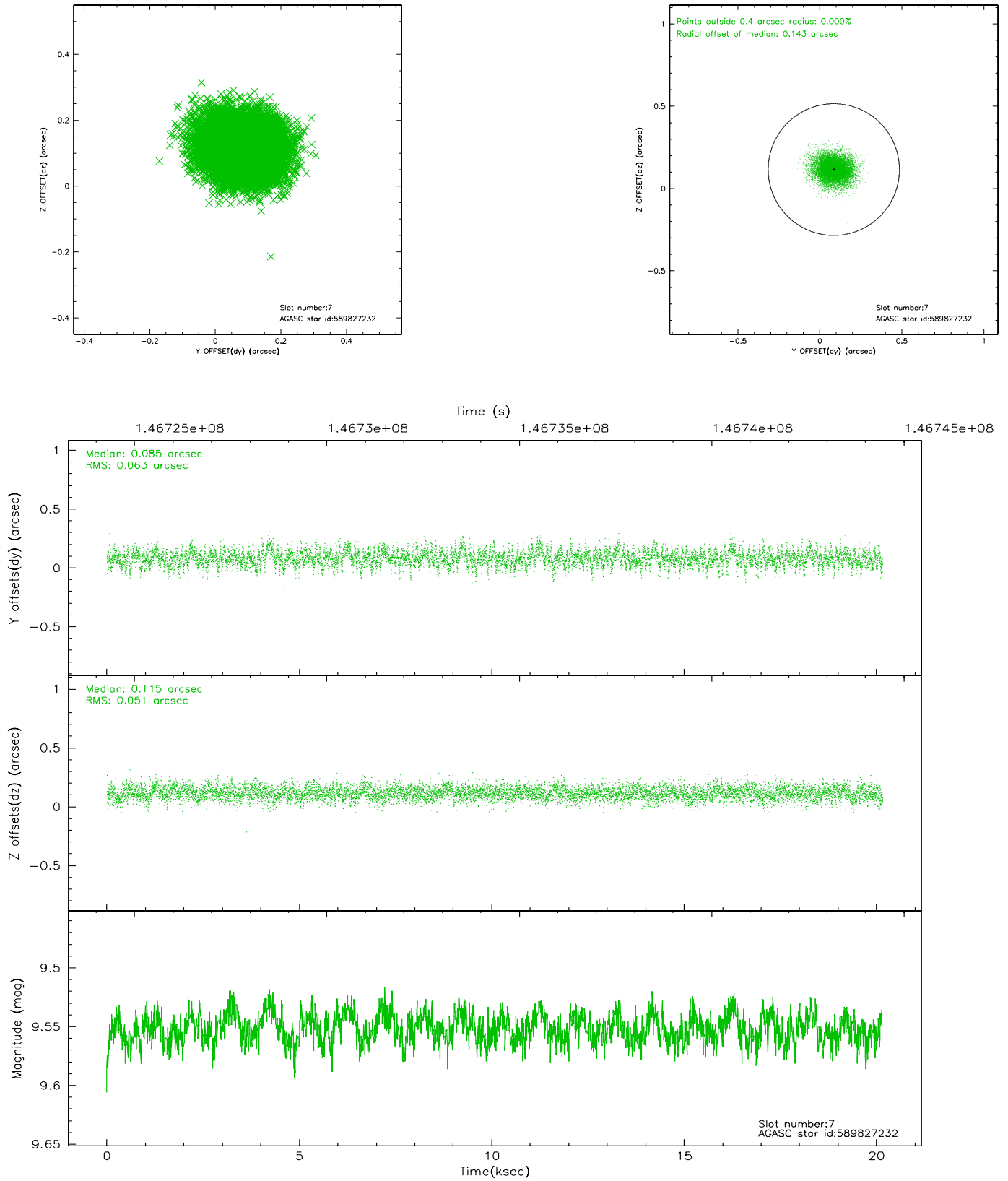
2.4.3 Slot 5



2.4.4 Slot 6

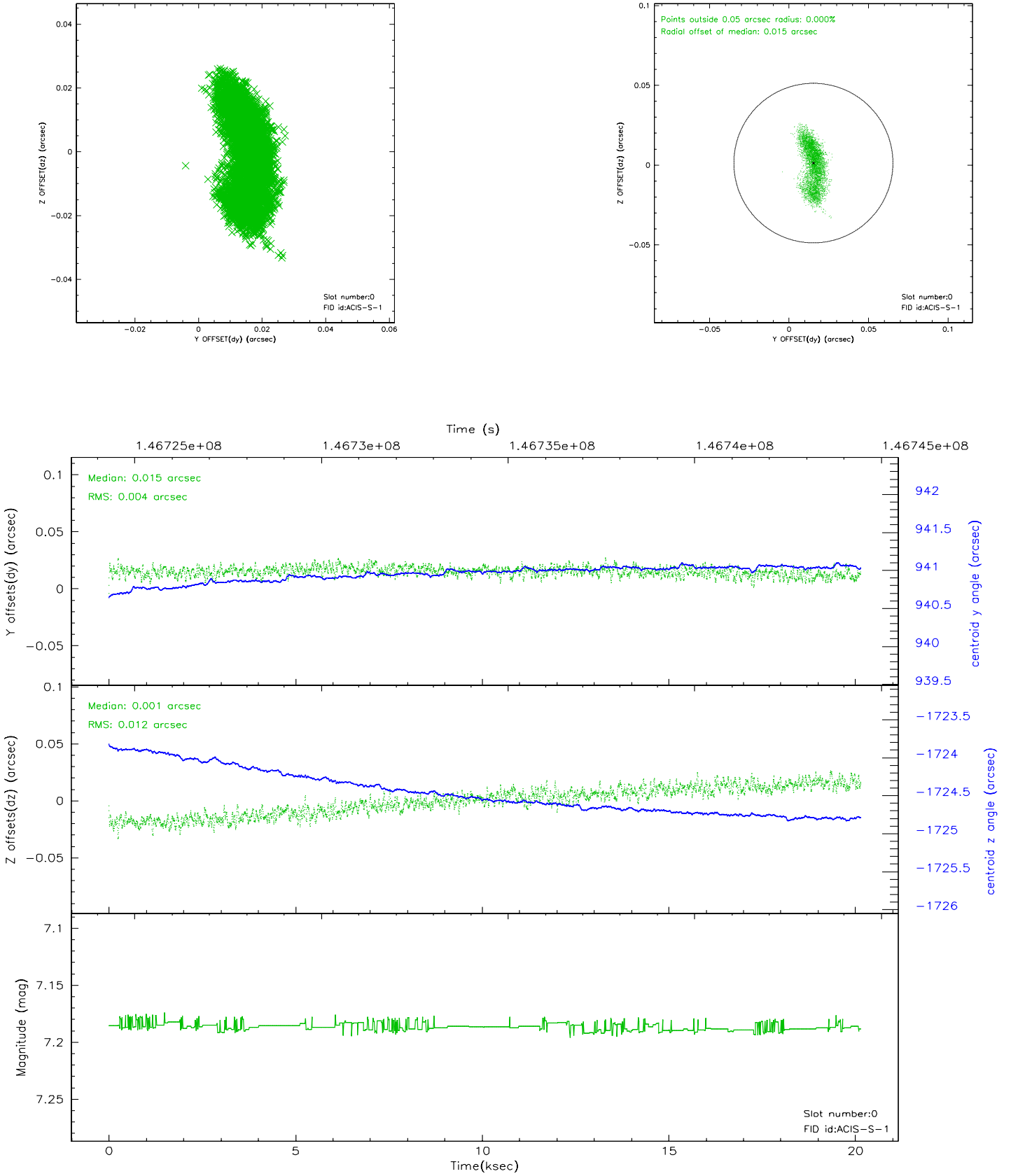


2.4.5 Slot 7

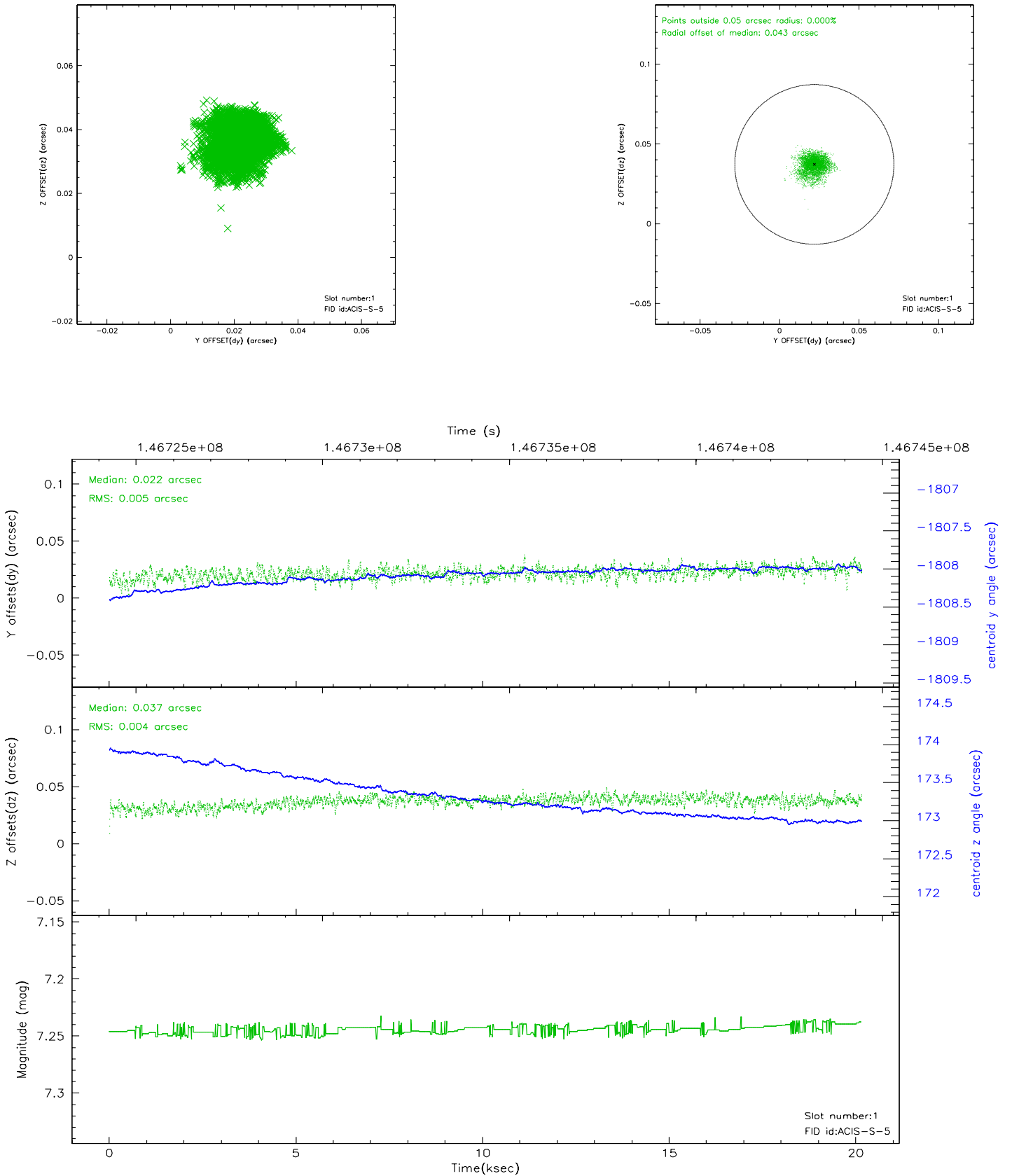


2.5 FID Slots

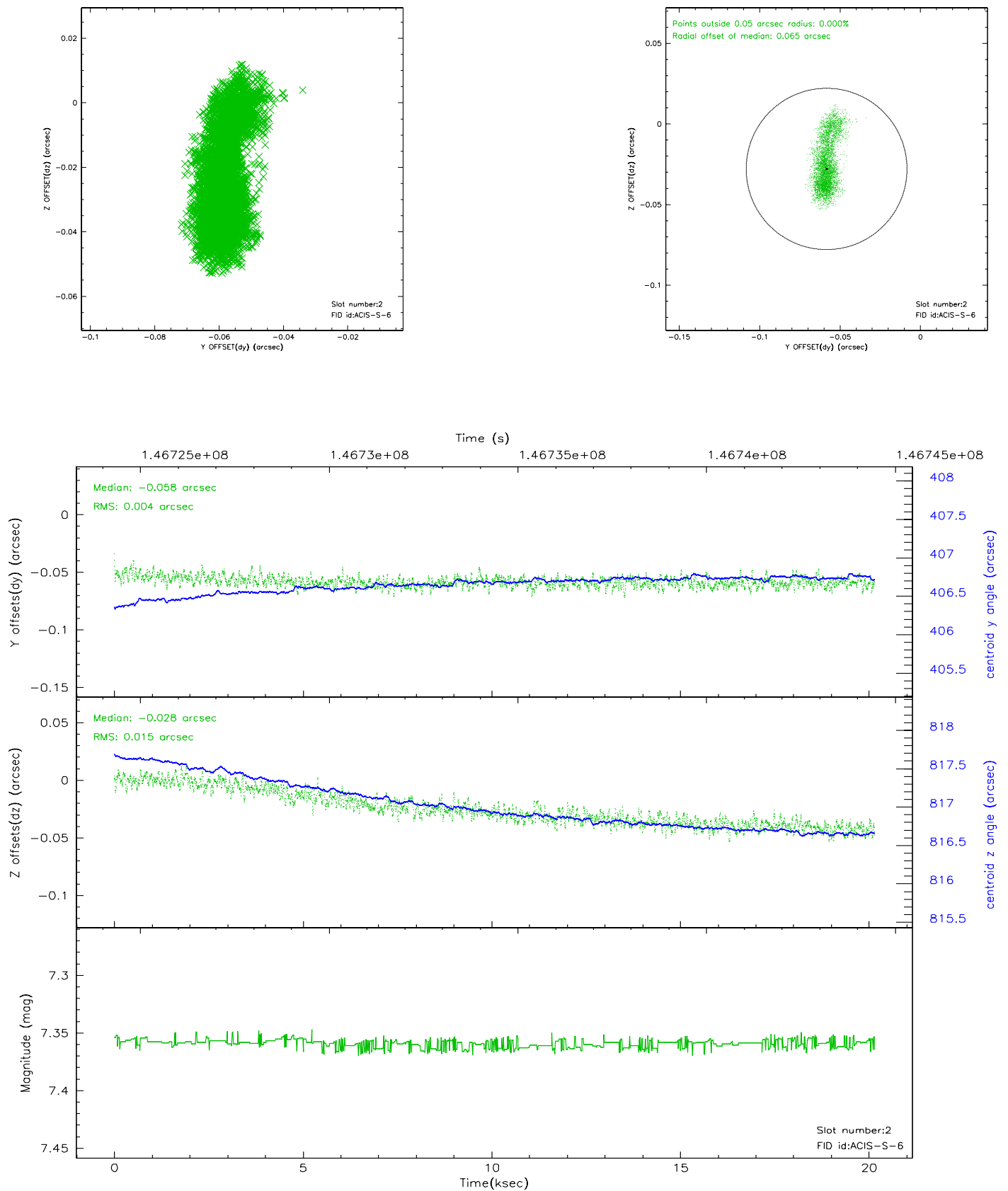
2.5.1 Slot 0



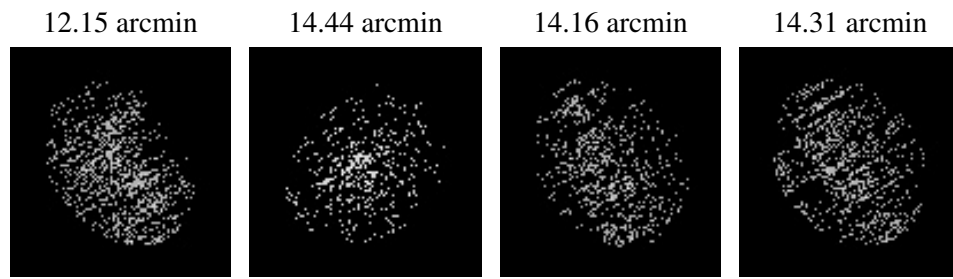
2.5.2 Slot 1



2.5.3 Slot 2



3 Point Sources



A Summary

A.1 Status

V&V Scientist	Jen Lauer
V&V Date (YYYY-MM-DD)	2006.09.29
V&V Edition	1
V&V Disposition and Status	OK
V&V Charge Time	20.153

A.2 Comments

Focal plane temperature is warmer than -118.7 C degrees during the first 9 ksec of this observation. The ACIS spectral response calibration for the front-illuminated chips is less accurate at these warmer temperatures than it is at -119.7 C. The back-illuminated chips are not affected at the focal plane temperatures recorded for this observation. Users whose science objectives depend on the most accurate spectral response (i.e.: fitting line-rich spectra) may notice an effect. Users whose science objectives do not depend on the most accurate spectral response should not notice an effect.