

V&V Reference Report

L2 ASCDS Version : 7.6.9

Observation 4283 - L2 Version 001
Chandra X-Ray Center

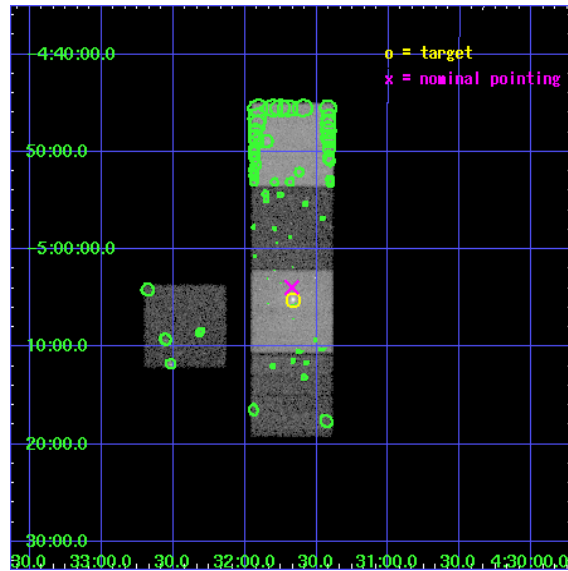
L2 Processing Date : Oct 4 2006

Contents

1	Front	2
2	OBI	3
2.1	OBI	3
2.1.1	Images	3
2.1.2	Bias	3
2.1.3	Parameters	4
2.1.4	Events	4
2.2	Compared Parameters	5
2.3	Aspect	6
2.4	Star Slots	9
2.4.1	Slot 3	9
2.4.2	Slot 4	10
2.4.3	Slot 5	11
2.4.4	Slot 6	12
2.4.5	Slot 7	13
2.5	FID Slots	14
2.5.1	Slot 0	14
2.5.2	Slot 1	15
2.5.3	Slot 2	16
3	Point Sources	17
A	Summary	18
A.1	Status	18
A.2	Comments	18

1 Front

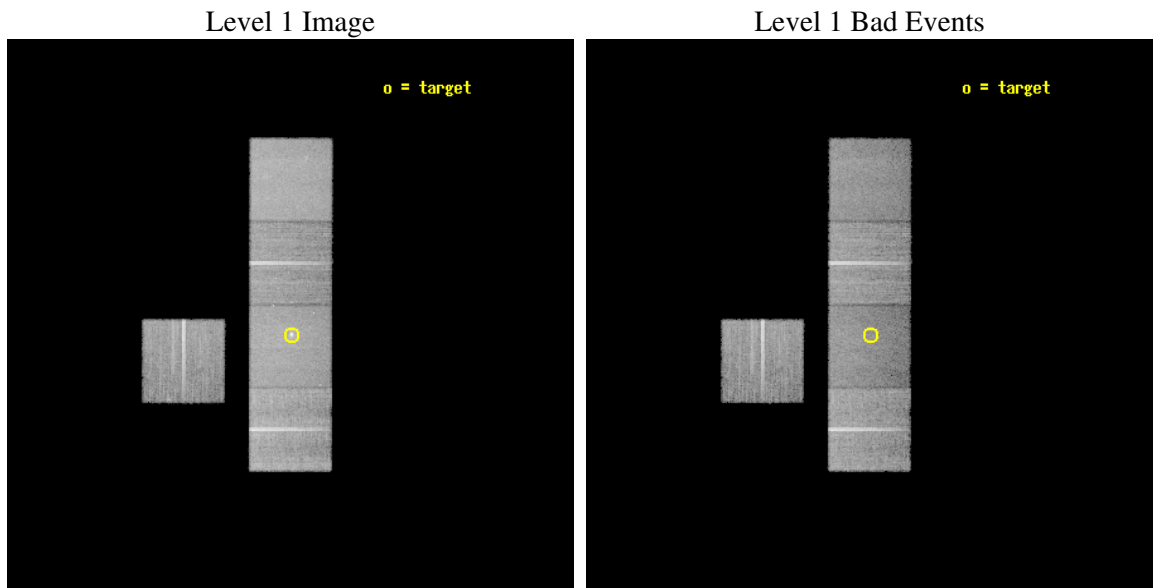
seq_num	600218
obs_id	4283
title	STELLAR MASS LOSS VERSUS EXTERNAL ACCRETION IN X-RAY BRIGHT ELLIPTICALS
observer	Dr. Craig Sarazin
object	NGC1600
dtcycle	0
cycle	P
ra_targ	67.91625
dec_targ	-5.086139
ra_nom	67.917916433894
dec_nom	-5.0654297354796
roll_nom	90.156788081922
revision	2
ontime	27137.399947822
livetime	26782.829839241
ontime3	27134.258957684
ontime5	27137.399947822
ontime6	27134.258987606
ontime7	27137.399947822
ontime8	27134.259077251
l2events	221322



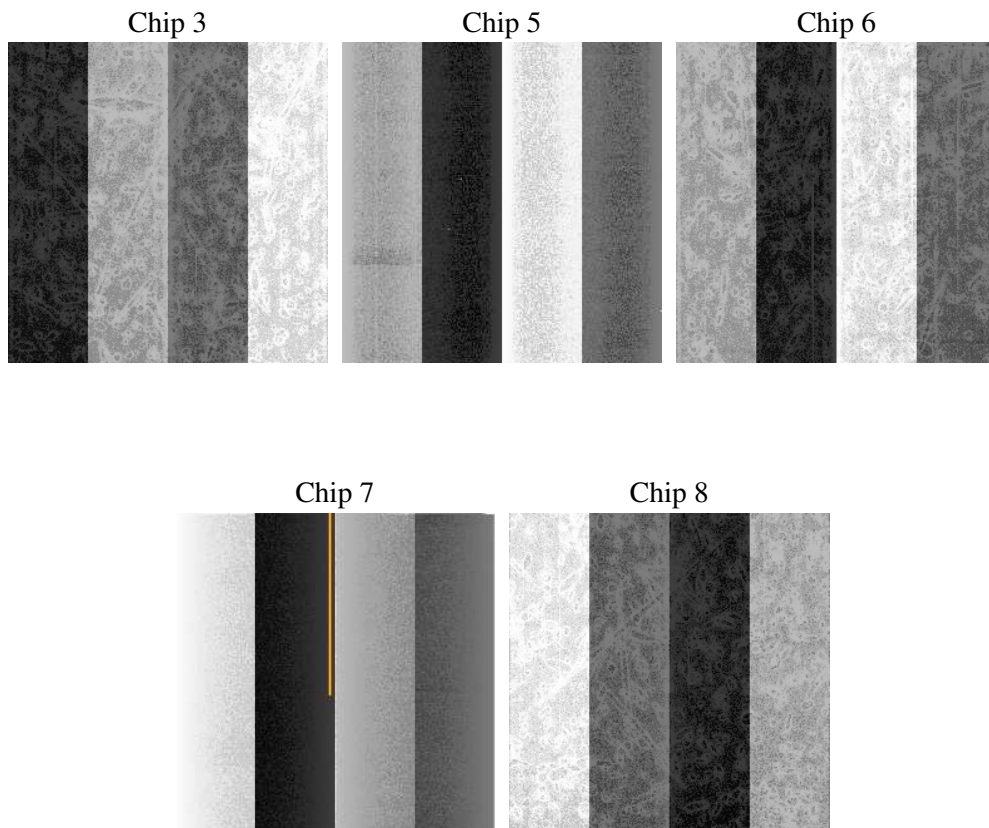
2 OBI

2.1 OBI

2.1.1 Images



2.1.2 Bias



2.1.3 Parameters

obi_num	0
ascdsver	7.6.9
caldsver	3.2.3
date	2006-10-04T14:36:32
revision	2

sched_exp_time	27000.000000
ontime	27213.641636014
ontime3	27210.500645876
ontime5	27213.641665906
ontime6	27210.50065586
ontime7	27213.641636014
ontime8	27210.500765443
l1events	847026

2.1.4 Events

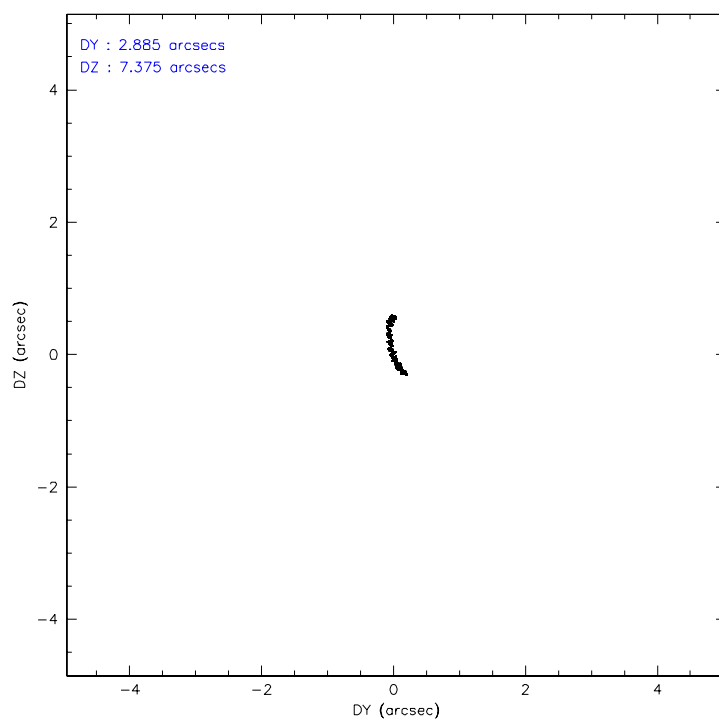
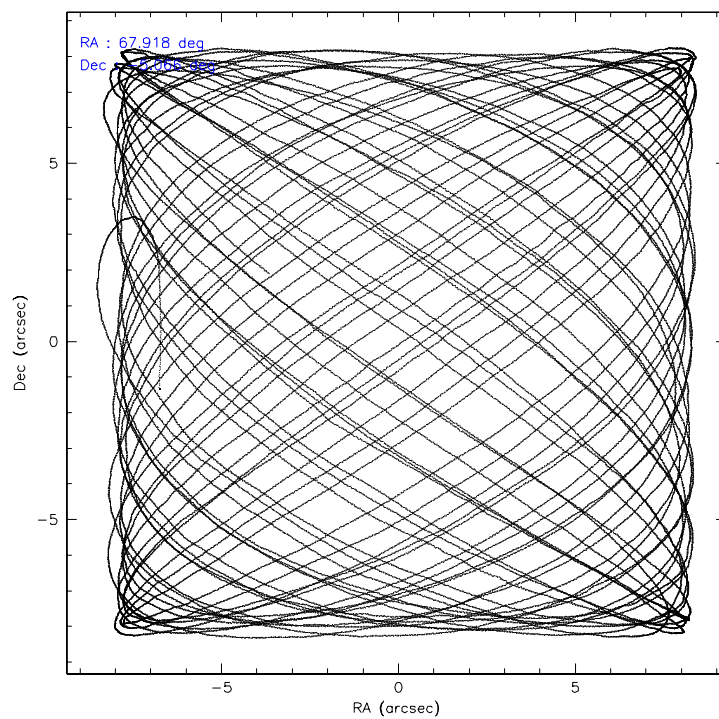
	ccd 3	ccd 5	ccd 6	ccd 7	ccd 8
level 1 events	142131	194374	150117	174812	185592
rejected events	127843	99137	132141	90954	143413
rejected %	89%	51%	88%	52%	77%

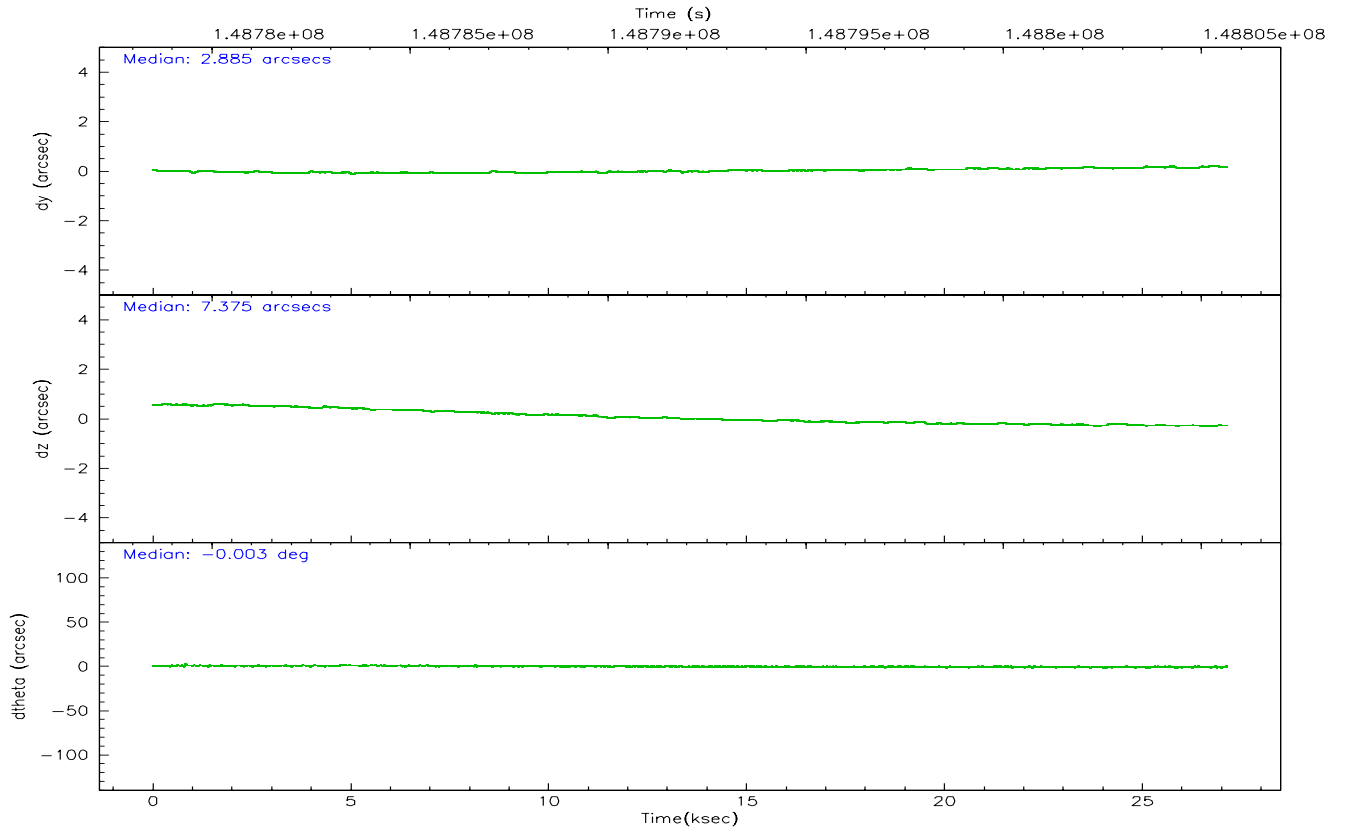
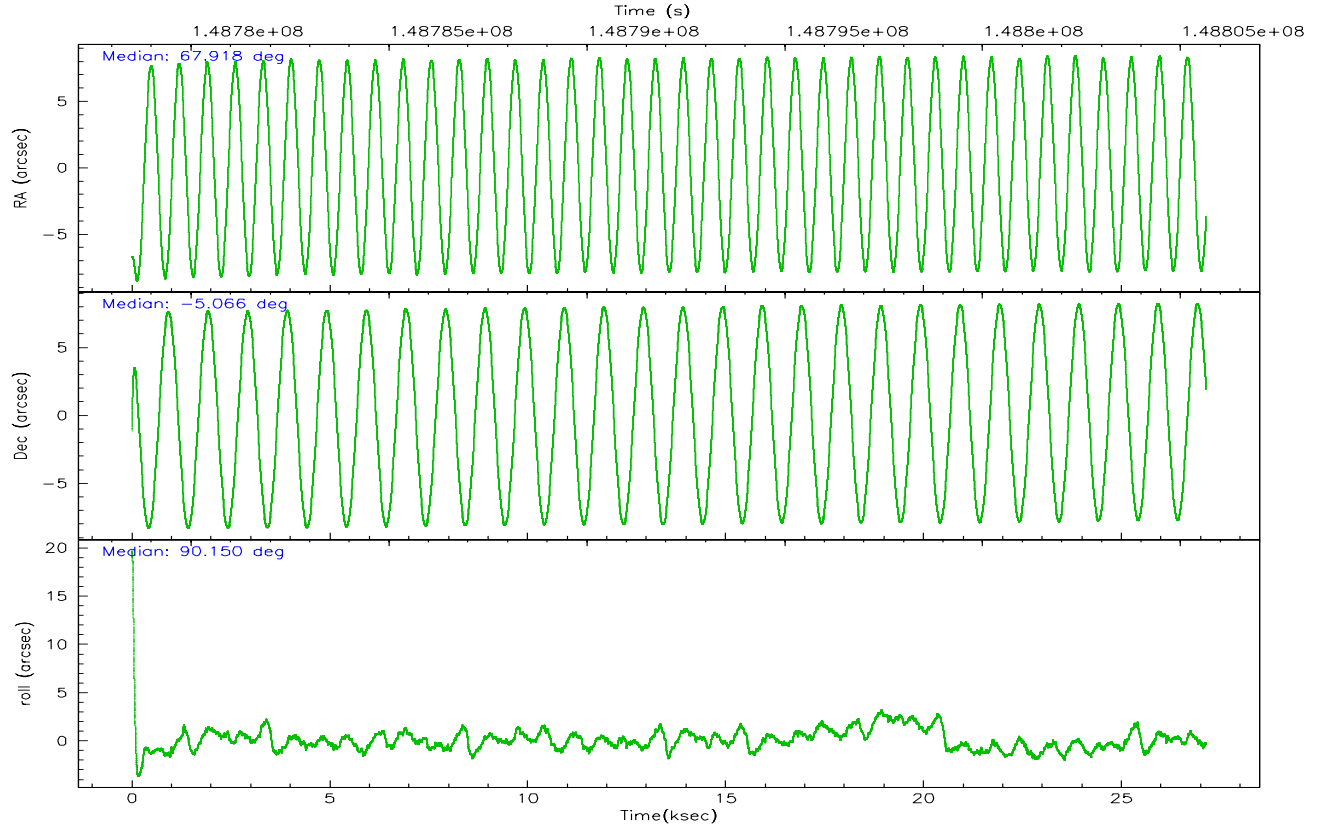
	ccd 3	ccd 5	ccd 6	ccd 7	ccd 8
grade 0 events	5635	5567	7882	8481	14089
	3%	2%	5%	4%	7%
grade 1 events	71	56	66	81	118
	0%	0%	0%	0%	0%
grade 2 events	2913	30377	3490	20356	8802
	2%	15%	2%	11%	4%
grade 3 events	1598	2831	1787	5618	4546
	1%	1%	1%	3%	2%
grade 4 events	1620	2712	1751	5617	4229
	1%	1%	1%	3%	2%
grade 5 events	5349	10069	5532	12276	7768
	3%	5%	3%	7%	4%
grade 6 events	2575	54202	3132	44160	10688
	1%	27%	2%	25%	5%
grade 7 events	122370	88560	126477	78223	135352
	86%	45%	84%	44%	72%

2.2 Compared Parameters

Parameter	Planned	Actual	Parameter	Planned	Actual
Instrument	ACIS	ACIS	Obspar format version number	6	6
Detector	ACIS-35678	ACIS-35678	Obspar file type	PREDICTED	ACTUAL
Grating	NONE	NONE	Obspar update status	NONE	UPDATED
Data mode	VFAINT	VFAINT	Number of optional ACIS chips dropped	0	0
Observation mode	POINTING	POINTING	On-chip summing requested	N	N
Pointing RA	67.931978	67.91791643389423	Subarray requested	NONE	NONE
Pointing Dec	-5.088804	-5.065429735479587	Alternating exposures requested	N	N
Pointing Roll	90.001395	90.15678808192212	Primary exposure time	0.000000	3.1
SIM focus pos (mm)	-0.684267	-0.6828225247311905			
SIM defocus (mm)	0	0.001444936568705701			
SIM translation stage pos (mm)	-190.132523	-190.1400660498719			
SIM translation stage offset (mm)	0	0.00754346686406393			
Observation start time	148778655.184000	148777641.76846			
Observation start date	2002-09-18T23:23:11	2002-09-18T23:07:21			
Observation end time	148805655.184000	148806515.50715			
Observation end date	2002-09-19T06:53:11	2002-09-19T07:08:35			
Read mode	TIMED	TIMED			

2.3 Aspect



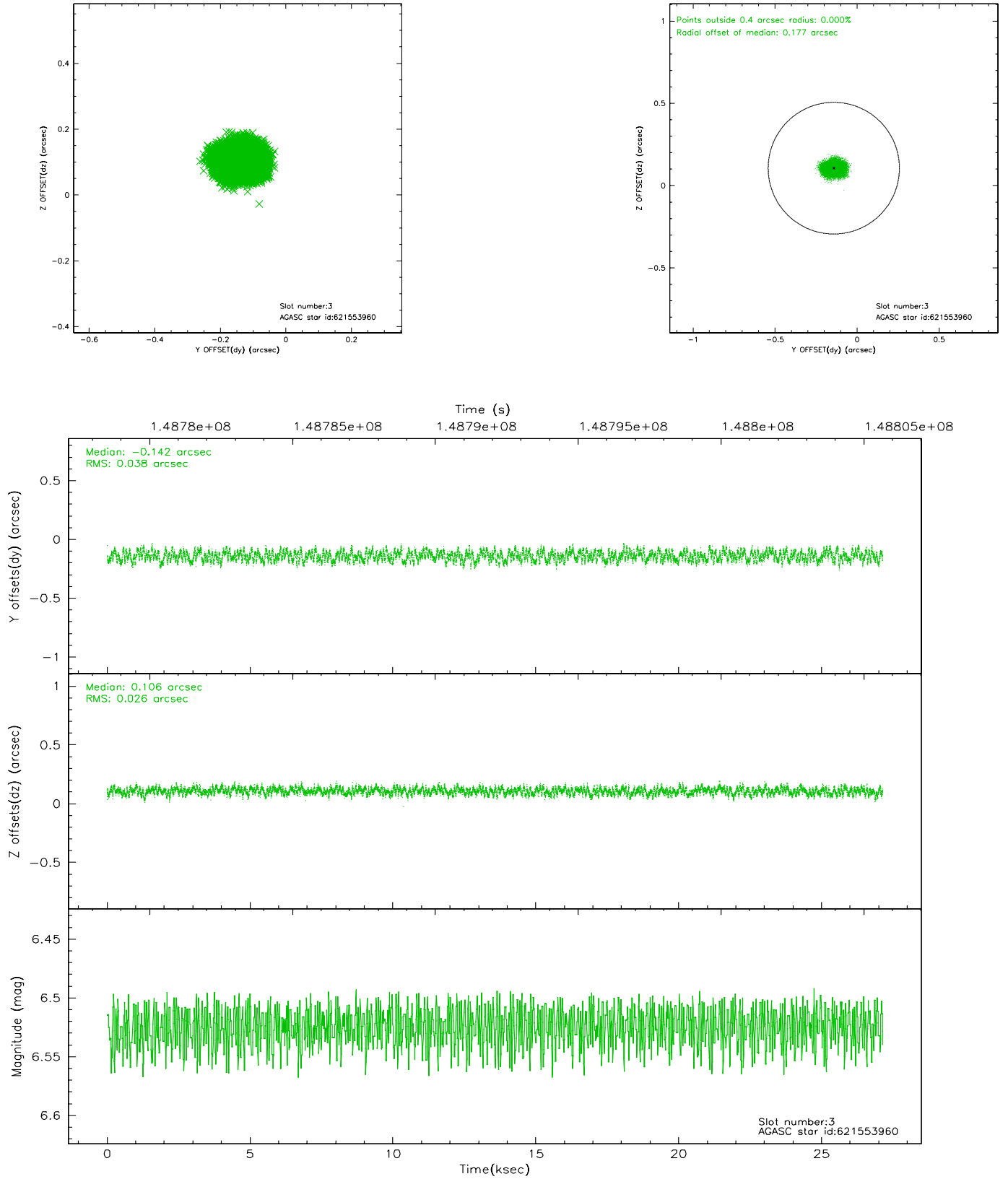


Slot Statistics

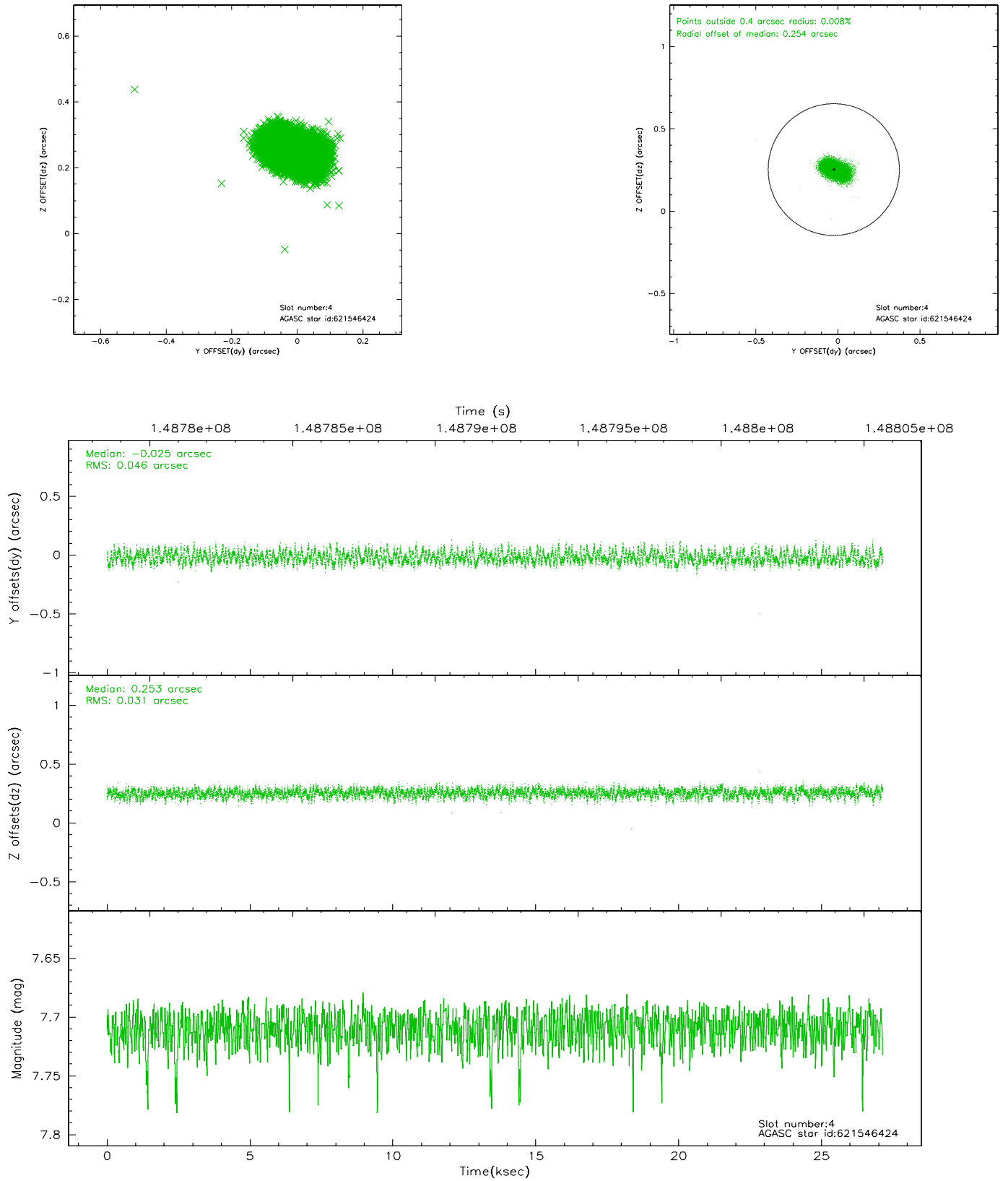
slot	status	id	mag	n_pts	med_dy	med_dz	dr1	dr2	ra	dec	mean_y	mean_z
0	FID	ACIS-S-3	7.35	6619	-0.087	-0.036	0.015	0.024	0.000000	0.000000	57.52	-1857.72
1	FID	ACIS-S-4	7.20	6619	-0.016	0.064	0.014	0.021	0.000000	0.000000	2157.80	179.75
2	FID	ACIS-S-5	7.24	6619	0.074	-0.019	0.007	0.011	0.000000	0.000000	-1808.19	173.56
3	GUIDE	621553960	6.52	13239	-0.142	0.106	0.051	0.076	68.435033	-5.309670	-794.88	-1802.58
4	GUIDE	621546424	7.71	13210	-0.025	0.253	0.059	0.096	68.622214	-5.138021	-177.54	-2474.12
5	GUIDE	619986032	7.90	13236	-0.173	-0.250	0.050	0.080	67.431542	-4.597237	1769.61	1796.20
6	GUIDE	621544064	8.50	13236	0.072	0.186	0.071	0.115	68.548522	-4.557927	1911.56	-2211.52
7	GUIDE	620375512	8.89	13235	0.268	-0.292	0.088	0.145	67.329905	-5.680923	-2132.08	2156.84

2.4 Star Slots

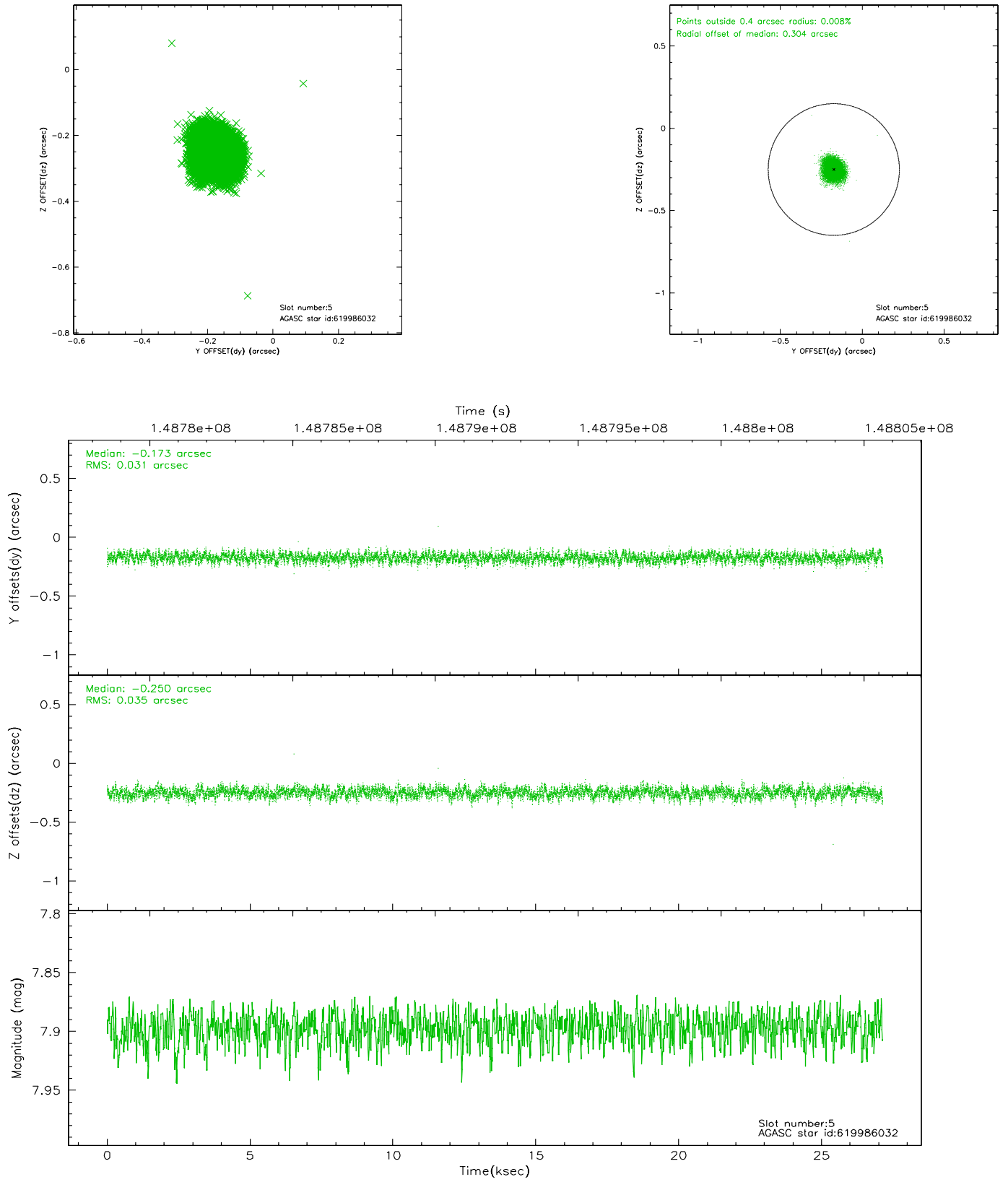
2.4.1 Slot 3



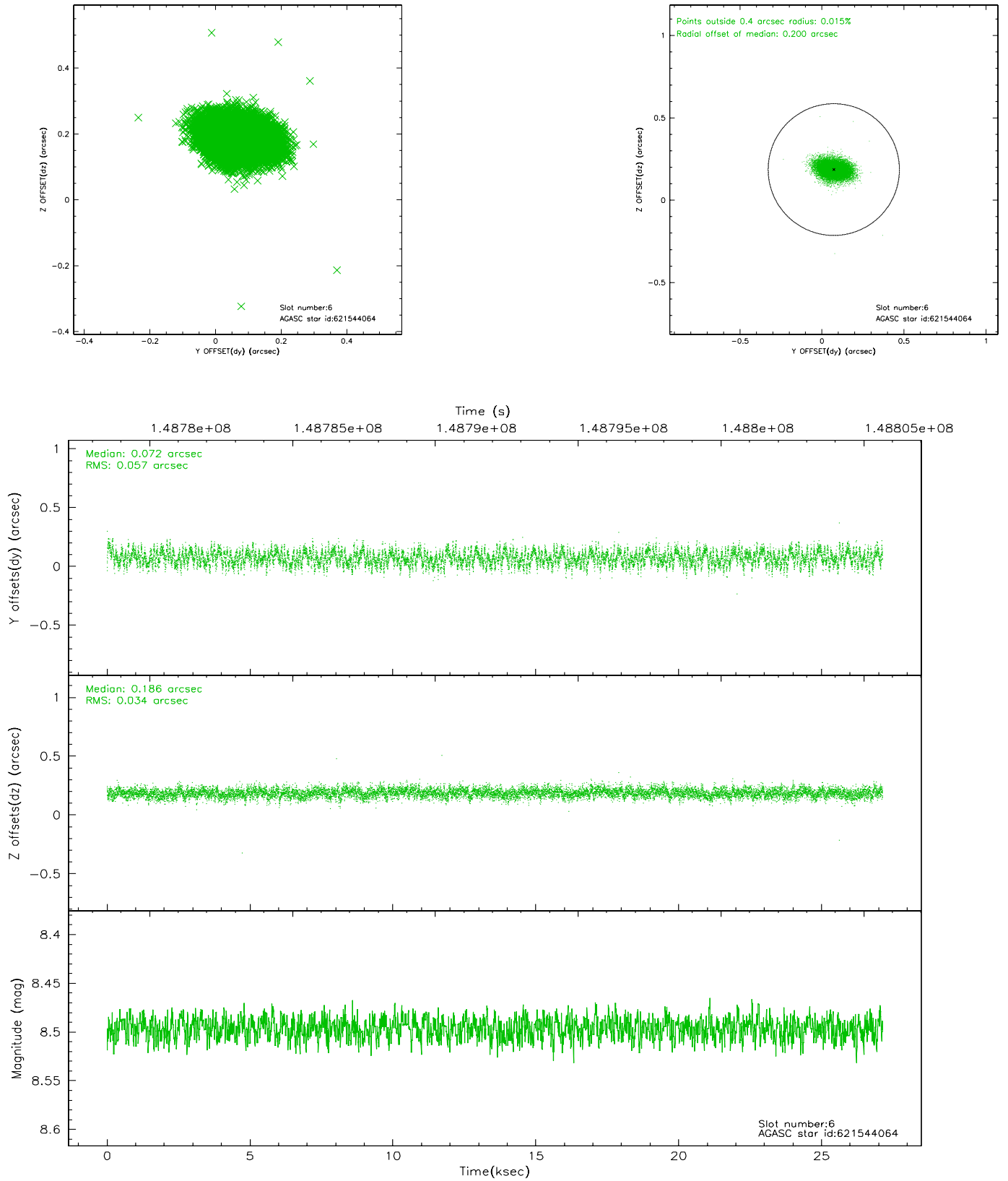
2.4.2 Slot 4



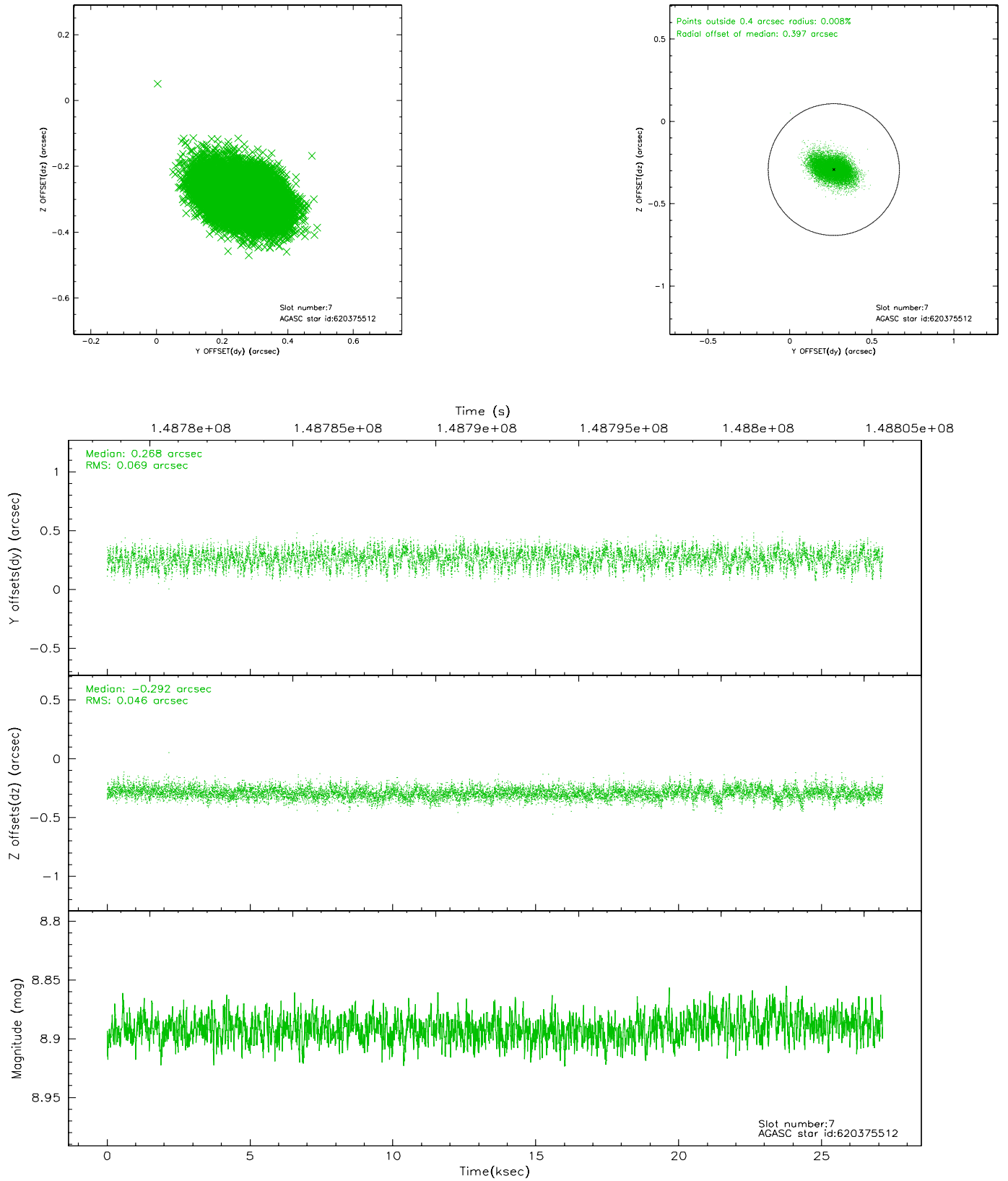
2.4.3 Slot 5



2.4.4 Slot 6

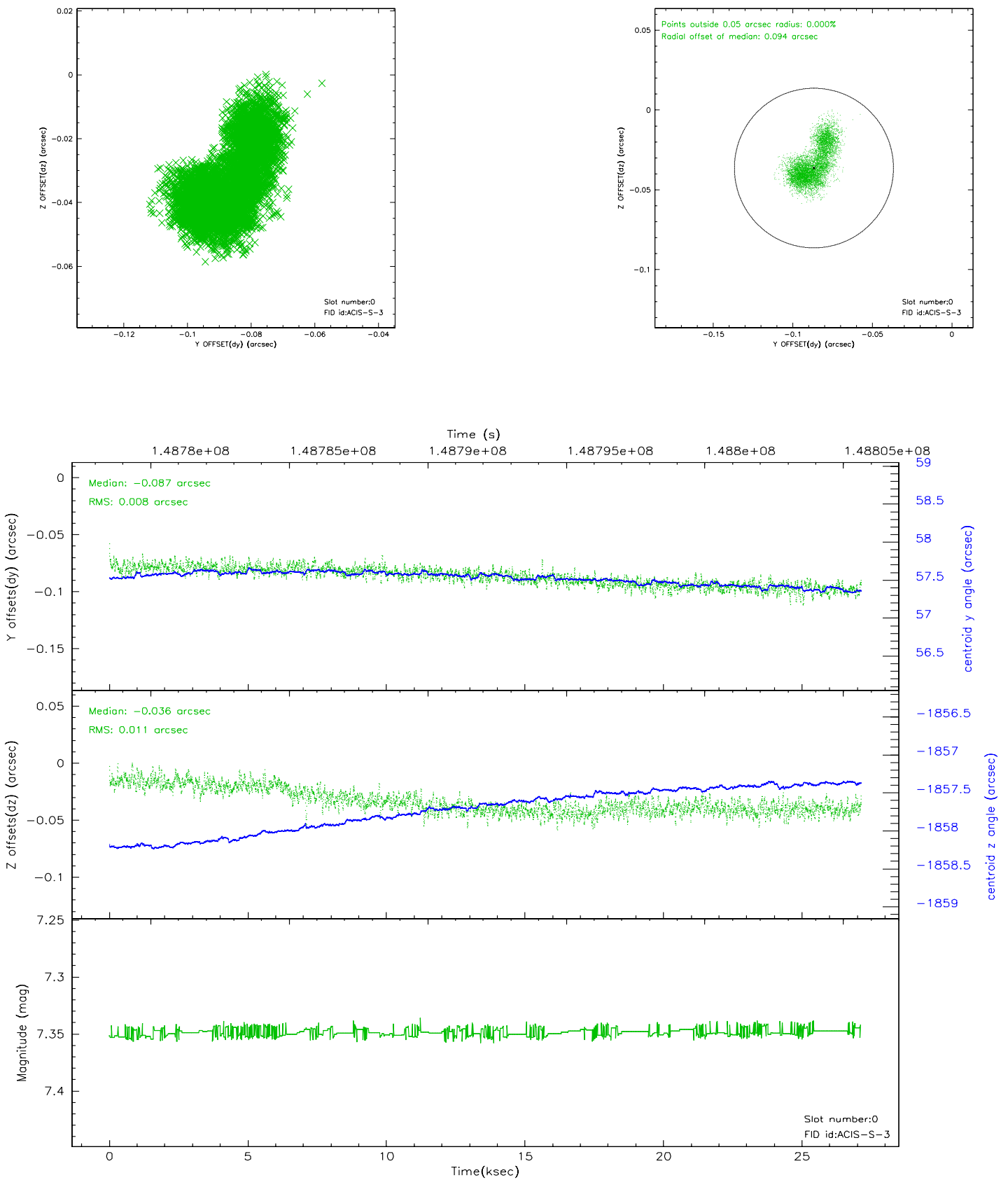


2.4.5 Slot 7

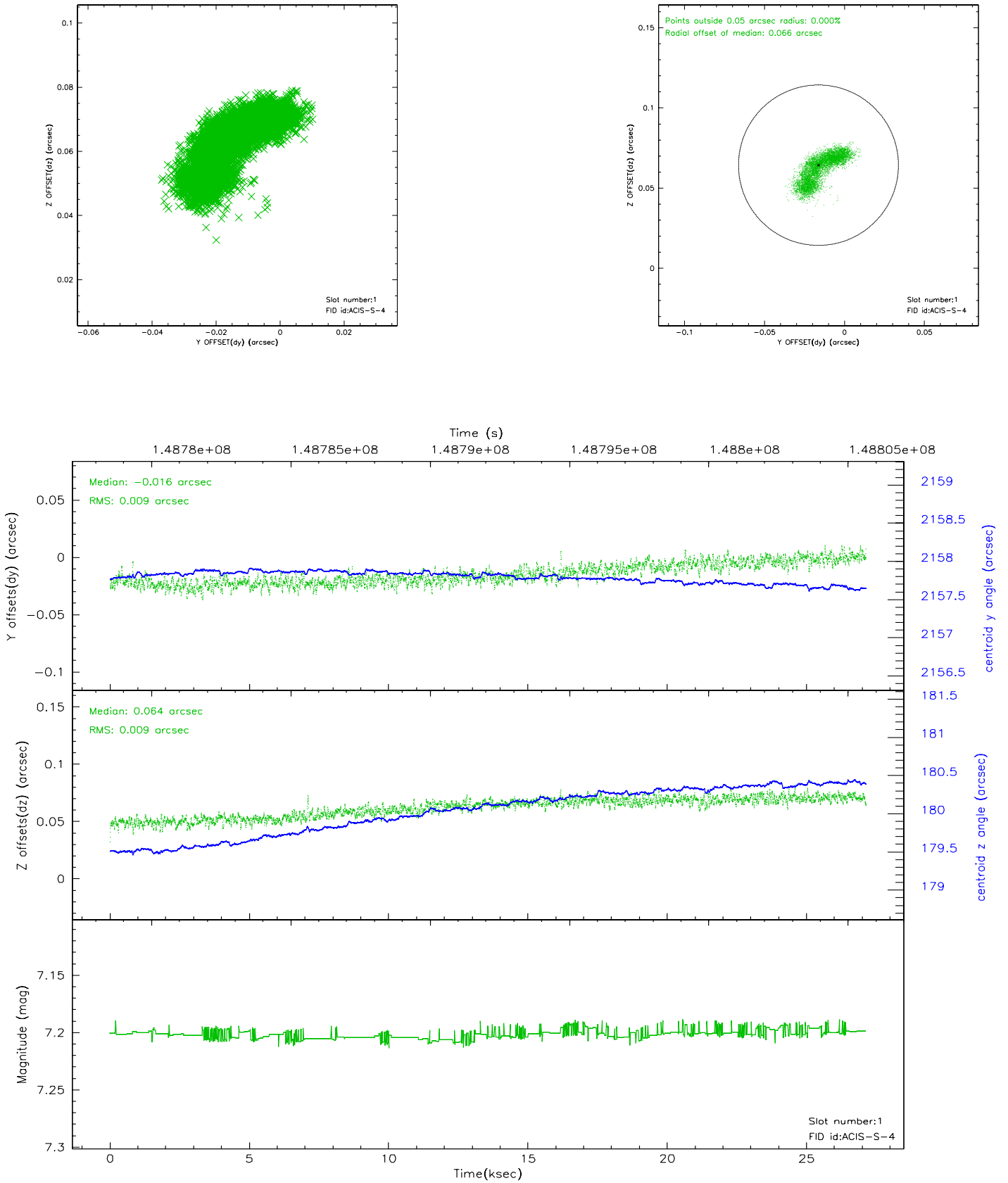


2.5 FID Slots

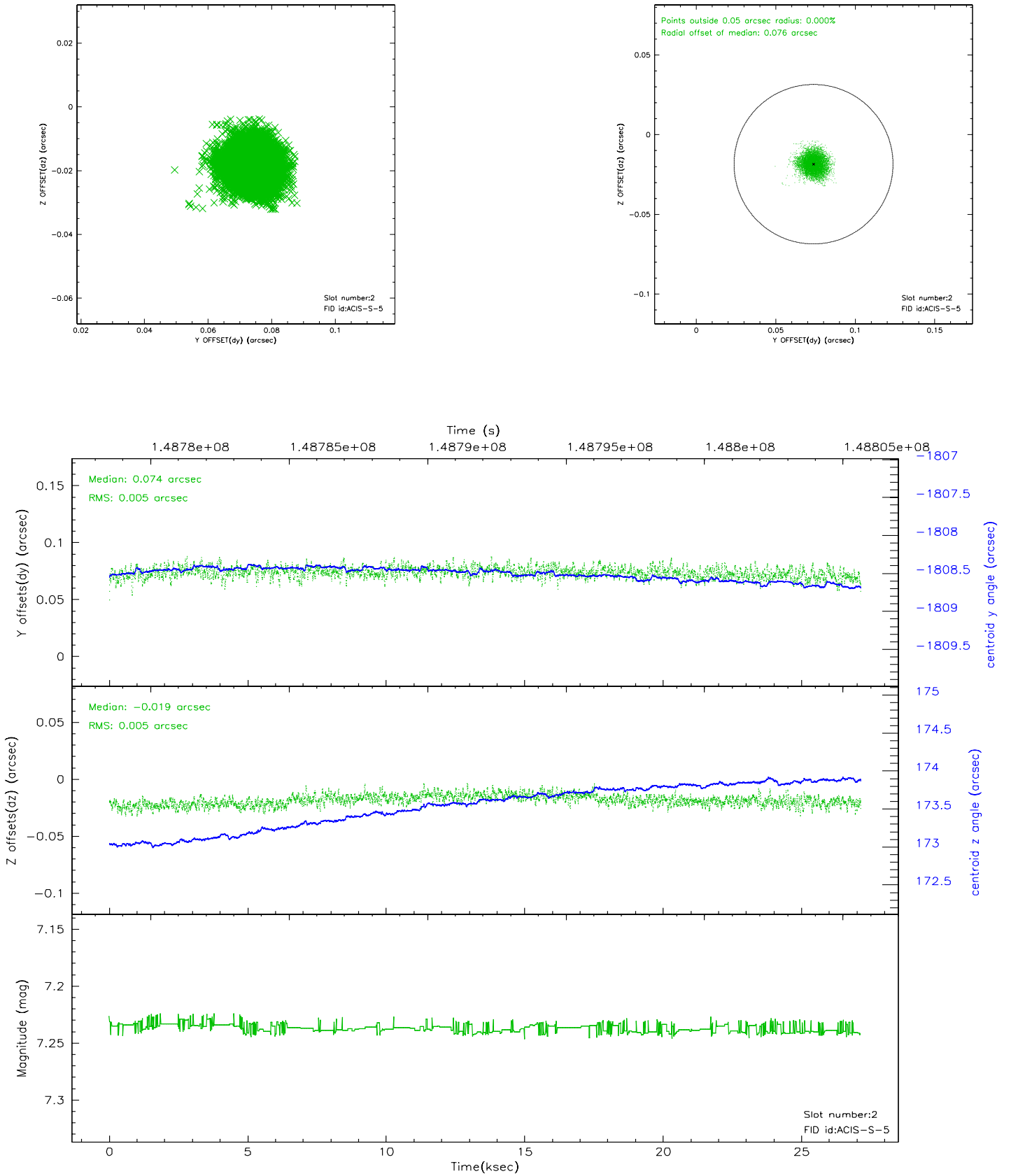
2.5.1 Slot 0



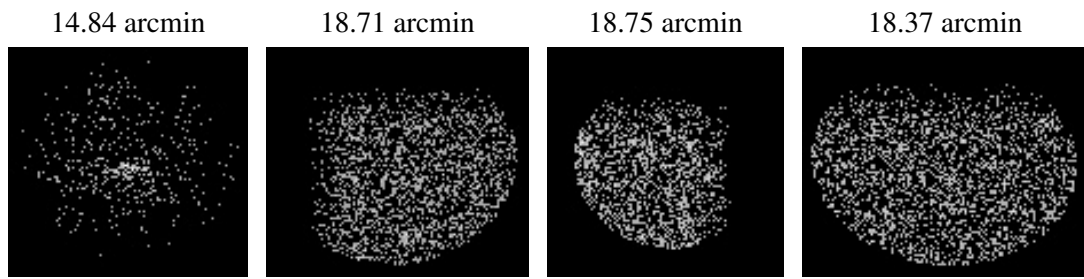
2.5.2 Slot 1



2.5.3 Slot 2



3 Point Sources



A Summary

A.1 Status

V&V Scientist	Jen Lauer
V&V Date (YYYY-MM-DD)	2006.10.04
V&V Edition	1
V&V Disposition and Status	OK
V&V Charge Time	27.137

A.2 Comments

Focal plane temperature is warmer than -118.7 C degrees during the first 2 ksec of this observation. The ACIS spectral response calibration for the front-illuminated chips is less accurate at these warmer temperatures than it is at -119.7 C. The back-illuminated chips are not affected at the focal plane temperatures recorded for this observation. Users whose science objectives depend on the most accurate spectral response (i.e.: fitting line-rich spectra) may notice an effect. Users whose science objectives do not depend on the most accurate spectral response should not notice an effect.