

V&V Reference Report

L2 ASCDS Version : 8.4.5

Observation 4253 - L2 Version 3
Chandra X-Ray Center

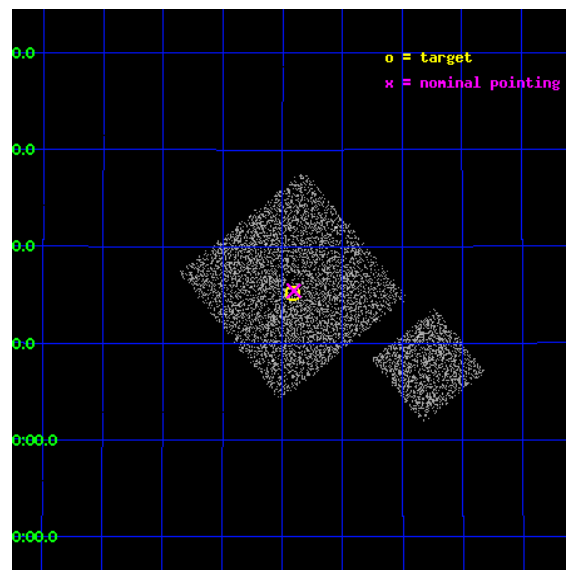
L2 Processing Date : Oct 25 2012

Contents

1	Front	2
2	OBI	3
2.1	OBI	3
2.1.1	Images	3
2.1.2	Bias	3
2.1.3	Parameters	4
2.1.4	Events	4
2.2	Compared Parameters	5
2.3	Aspect	6
2.4	Star Slots	9
2.4.1	Slot 3	9
2.4.2	Slot 4	10
2.4.3	Slot 5	11
2.4.4	Slot 6	12
2.4.5	Slot 7	13
2.5	FID Slots	14
2.5.1	Slot 0	14
2.5.2	Slot 1	15
2.5.3	Slot 2	16
A	Summary	17
A.1	Status	17
A.2	Comments	17

1 Front

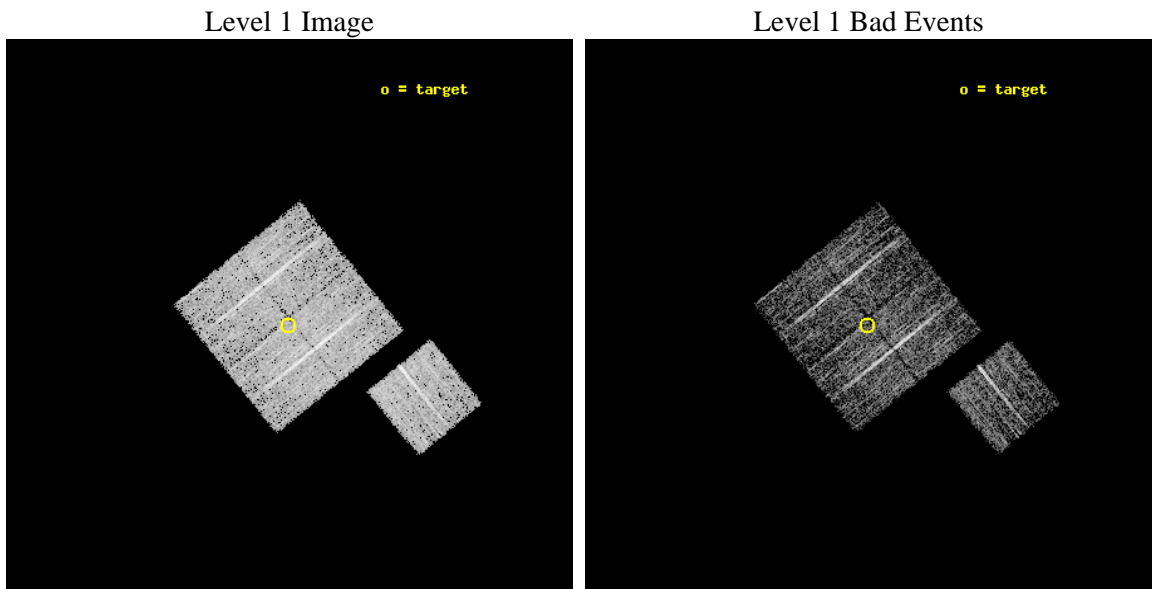
seq_num	900296	Sequence number
obs_id	4253	Observation id
title	A CHANDRA WIDE-FIELD SURVEY TO MAP THE COSMIC WEB AND INVESTIGATE THE EVOLUTION OF NUCLEAR ACCRETION	Proposal title
observer	Dr. Christine Jones	Principal investigator
object	SS8	Source name
dtcycle	0	
cycle	P	events from which exps? Prim/Second/Both
ra_targ	217.604097	Observer's specified target RA [deg]
dec_targ	33.253224	Observer's specified target Dec [deg]
ra_nom	217.60146480322	Nominal RA [deg]
dec_nom	33.257320194191	Nominal Dec [deg]
roll_nom	141.0101374099	Nominal Roll [deg]
revision	3	Processing version of data
ontime	4674.7999909818	Sum of GTIs [s]
livetime	4613.720287562	Livetime [s]
ontime0	4674.7815704048	Sum of GTIs [s]
ontime1	4674.7999909818	Sum of GTIs [s]
ontime2	4674.7999909818	Sum of GTIs [s]
ontime3	4674.7999909818	Sum of GTIs [s]
ontime6	4674.7405304015	Sum of GTIs [s]
l2events	9146	Number of level 2 events



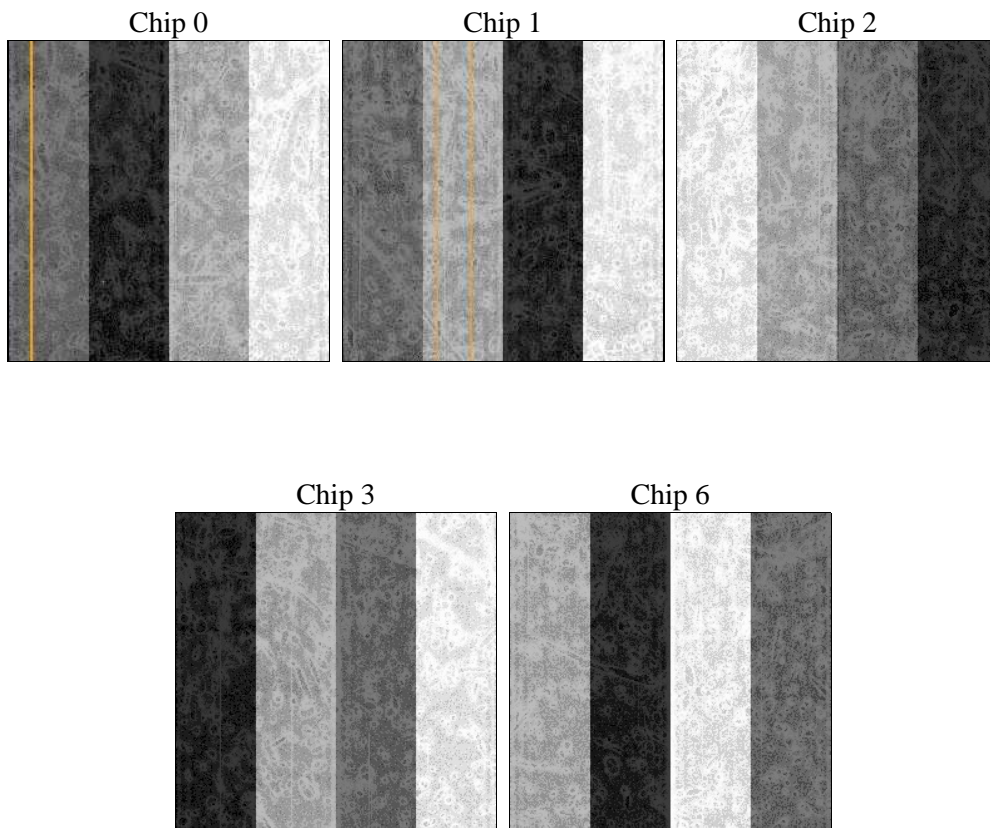
2 OBI

2.1 OBI

2.1.1 Images



2.1.2 Bias



2.1.3 Parameters

obi_num	1	Obi number	sched_exp_time	4900.000000	[s] Scheduled observation exposure time
ascdsver	8.4.5	Processing system revision	ontime	4674.7999909818	Sum of GTIs [s]
caldsver	4.5.2	 	ontime0	4674.7815704048	Sum of GTIs [s]
date	2012-10-25T15:30:49	Date and time of file creation	ontime1	4674.7999909818	Sum of GTIs [s]
revision	3	Processing version of data	ontime2	4674.7999909818	Sum of GTIs [s]
			ontime3	4674.7999909818	Sum of GTIs [s]
			ontime6	4674.7405304015	Sum of GTIs [s]
			l1events	112872	Number of level 1 events

2.1.4 Events

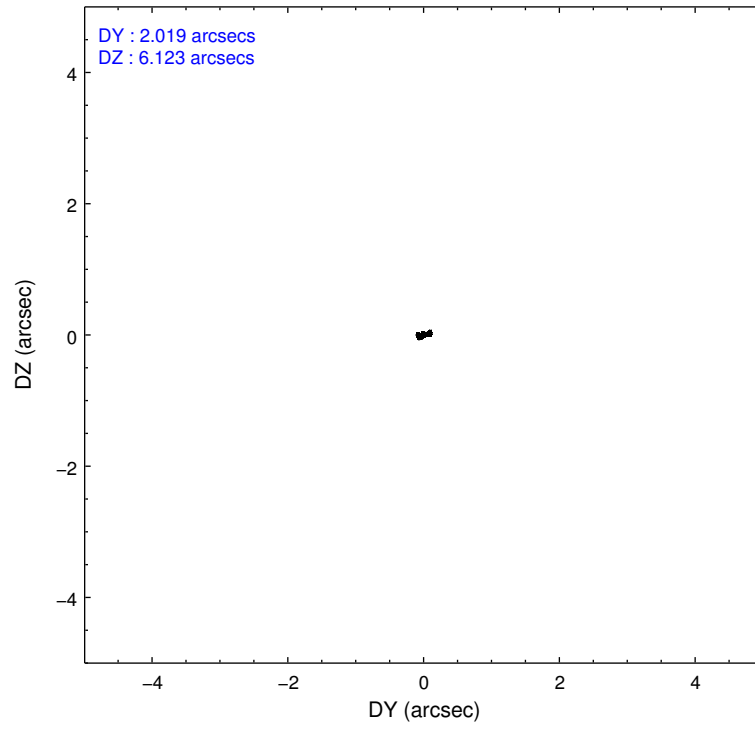
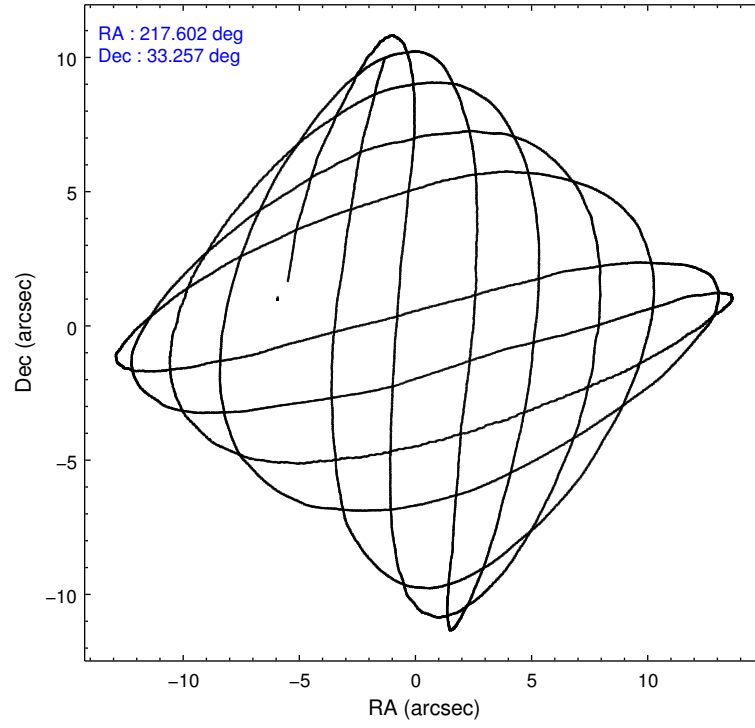
	ccd 0	ccd 1	ccd 2	ccd 3	ccd 6
level 1 events	21488	20726	23837	23639	23182
rejected events	19257	18413	21643	21507	20880
rejected %	89%	88%	90%	90%	90%

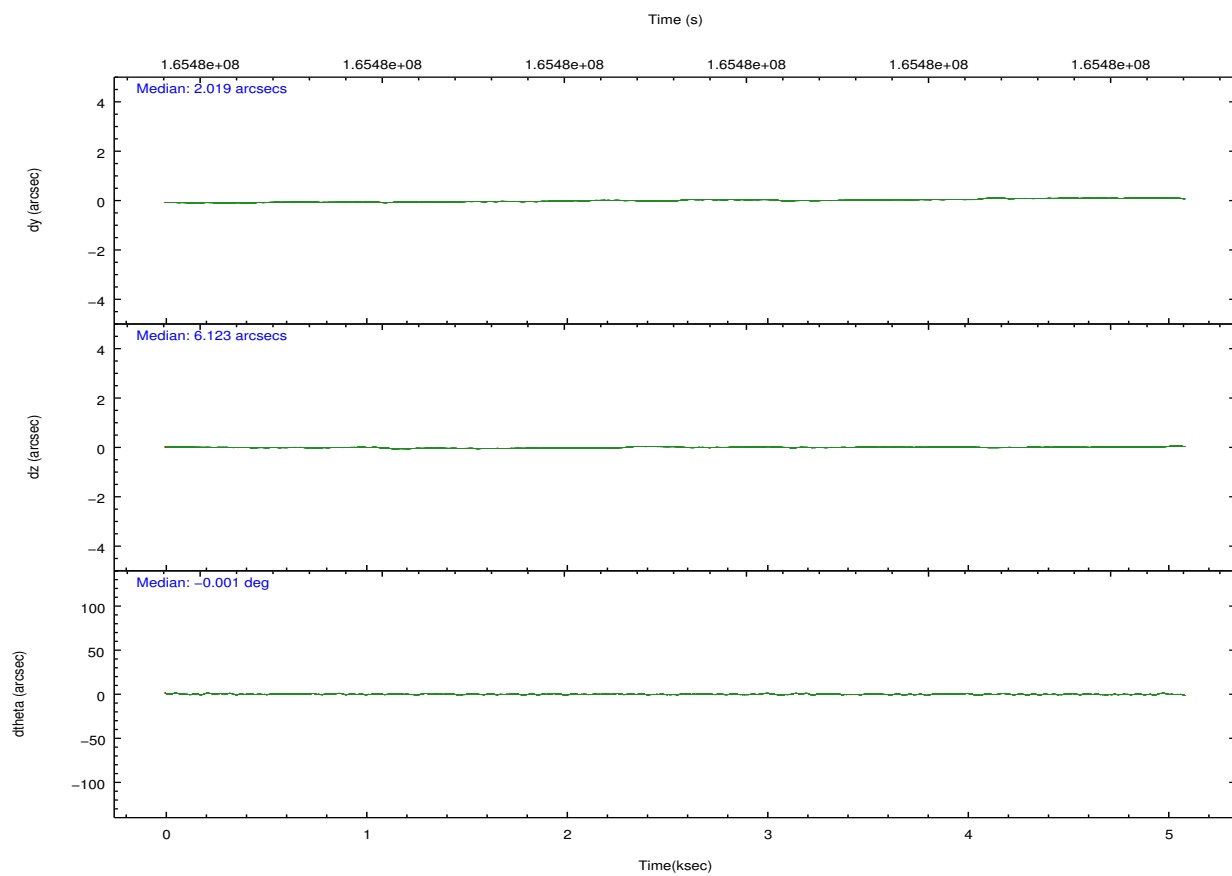
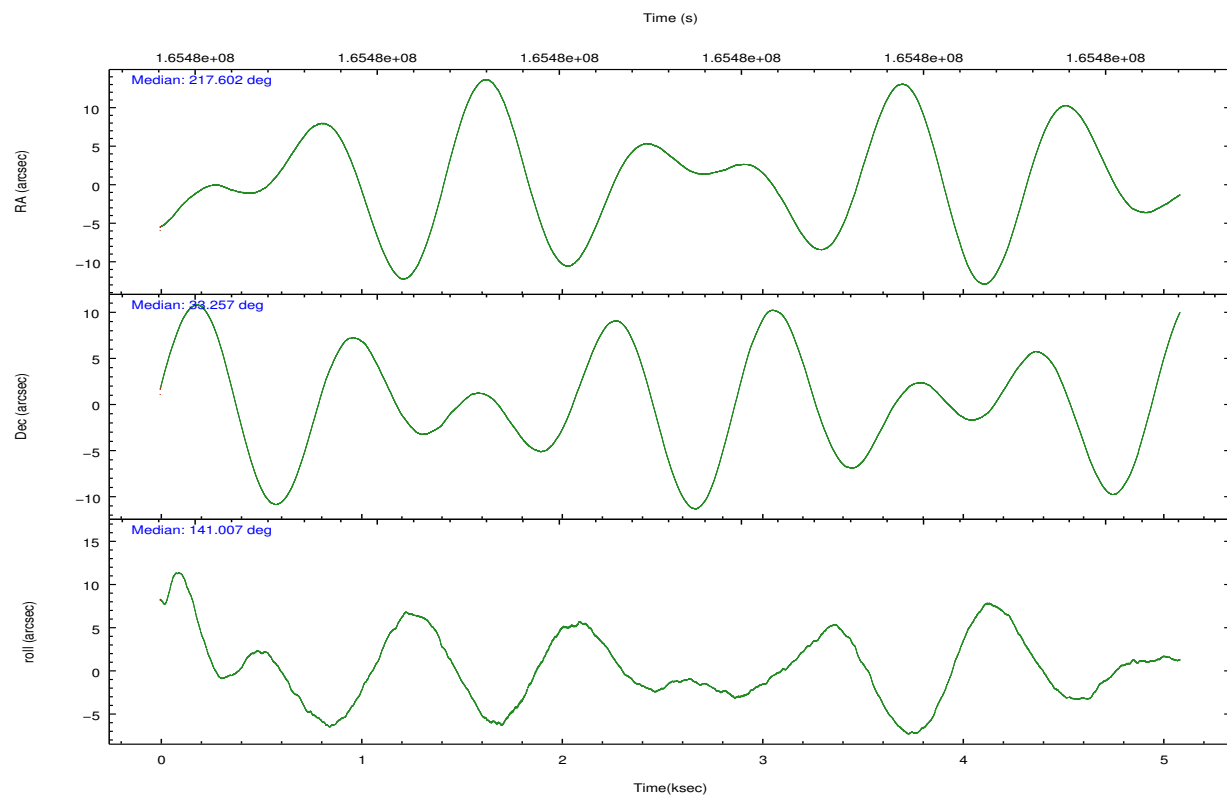
	ccd 0	ccd 1	ccd 2	ccd 3	ccd 6
grade 0 events	812	796	829	760	835
	3%	3%	3%	3%	3%
grade 1 events	10	4	15	11	10
	0%	0%	0%	0%	0%
grade 2 events	531	463	479	471	470
	2%	2%	2%	1%	2%
grade 3 events	247	302	265	261	263
	1%	1%	1%	1%	1%
grade 4 events	252	288	254	250	264
	1%	1%	1%	1%	1%
grade 5 events	663	695	641	744	740
	3%	3%	2%	3%	3%
grade 6 events	393	466	371	392	472
	1%	2%	1%	1%	2%
grade 7 events	18580	17712	20983	20750	20128
	86%	85%	88%	87%	86%

2.2 Compared Parameters

Parameter	Planned	Actual	Parameter	Planned	Actual
Instrument	ACIS	ACIS	Obspar format version number	7	7
Detector	ACIS-01236	ACIS-01236	Obspar file type	PREDICTED	ACTUAL
Grating	NONE	NONE	Obspar update status	NONE	UPDATED
Data mode	VFAINT	VFAINT	Number of optional ACIS chips dropped	0	0
Observation mode	POINTING	POINTING	On-chip summing requested	N	N
[deg] Pointing RA	217.633852	217.6014648032234	Subarray requested	NONE	NONE
[deg] Pointing Dec	33.253140	33.25732019419127	Alternating exposures requested	N	N
[deg] Pointing Roll	140.783689	141.0101374099016	[s] Primary exposure time	0.000000	3.1
[mm] SIM focus pos	-0.782348	-0.7809083437167272			
[mm] SIM defocus	0	0.001439871863259334			
[mm] SIM translation stage pos	-233.592463	-233.5874344608287			
[mm] SIM translation stage offset	0	-0.005018542100998502			
[s] Observation start time (MET)	165480244.184000	165479868.3287			
Observation start date	2003-03-31T06:43:00	2003-03-31T06:37:48			
[s] Observation end time (MET)	165485144.184000	165485278.27893			
Observation end date	2003-03-31T08:04:40	2003-03-31T08:07:58			
Read mode	TIMED	TIMED			

2.3 Aspect



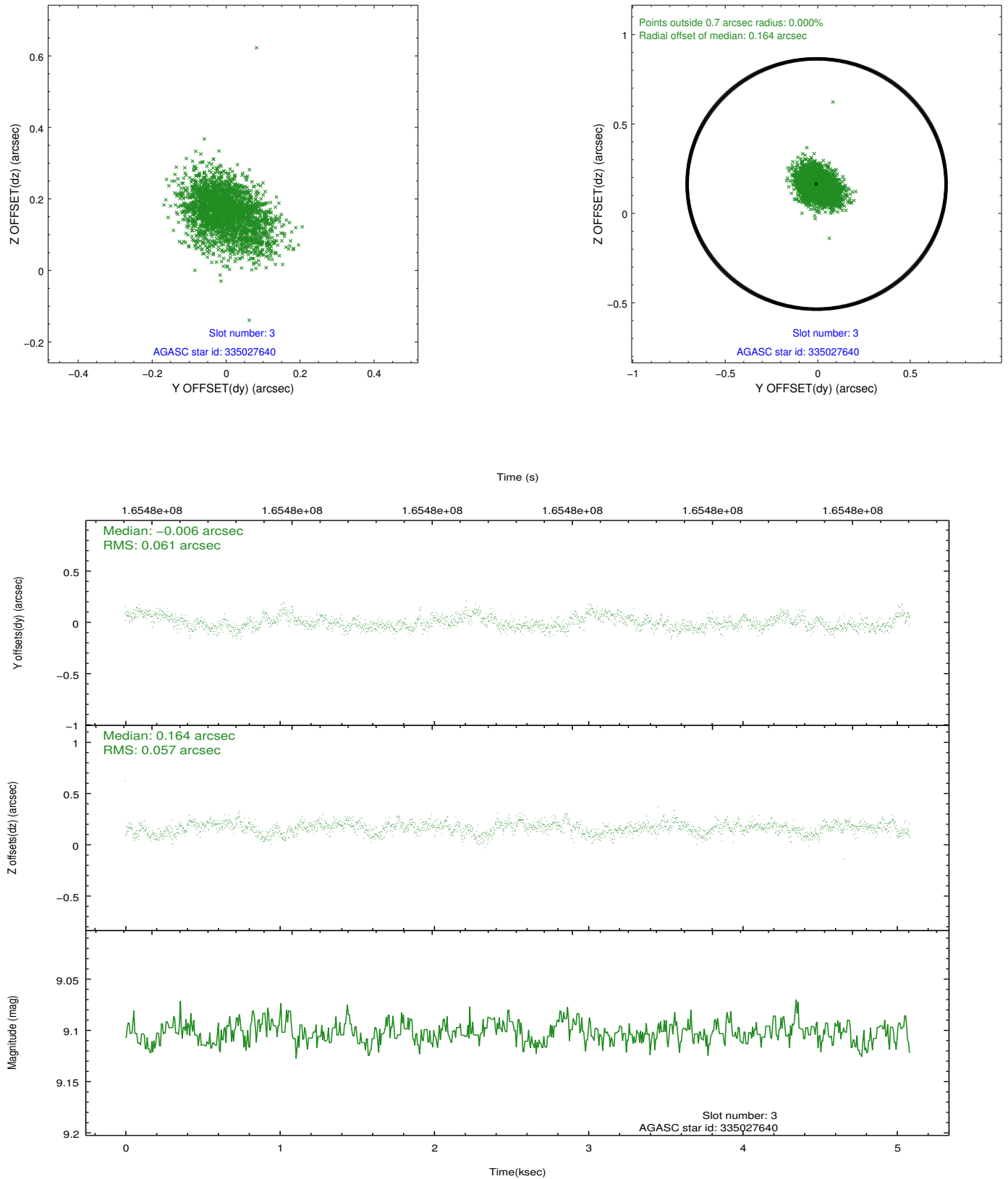


Slot Statistics

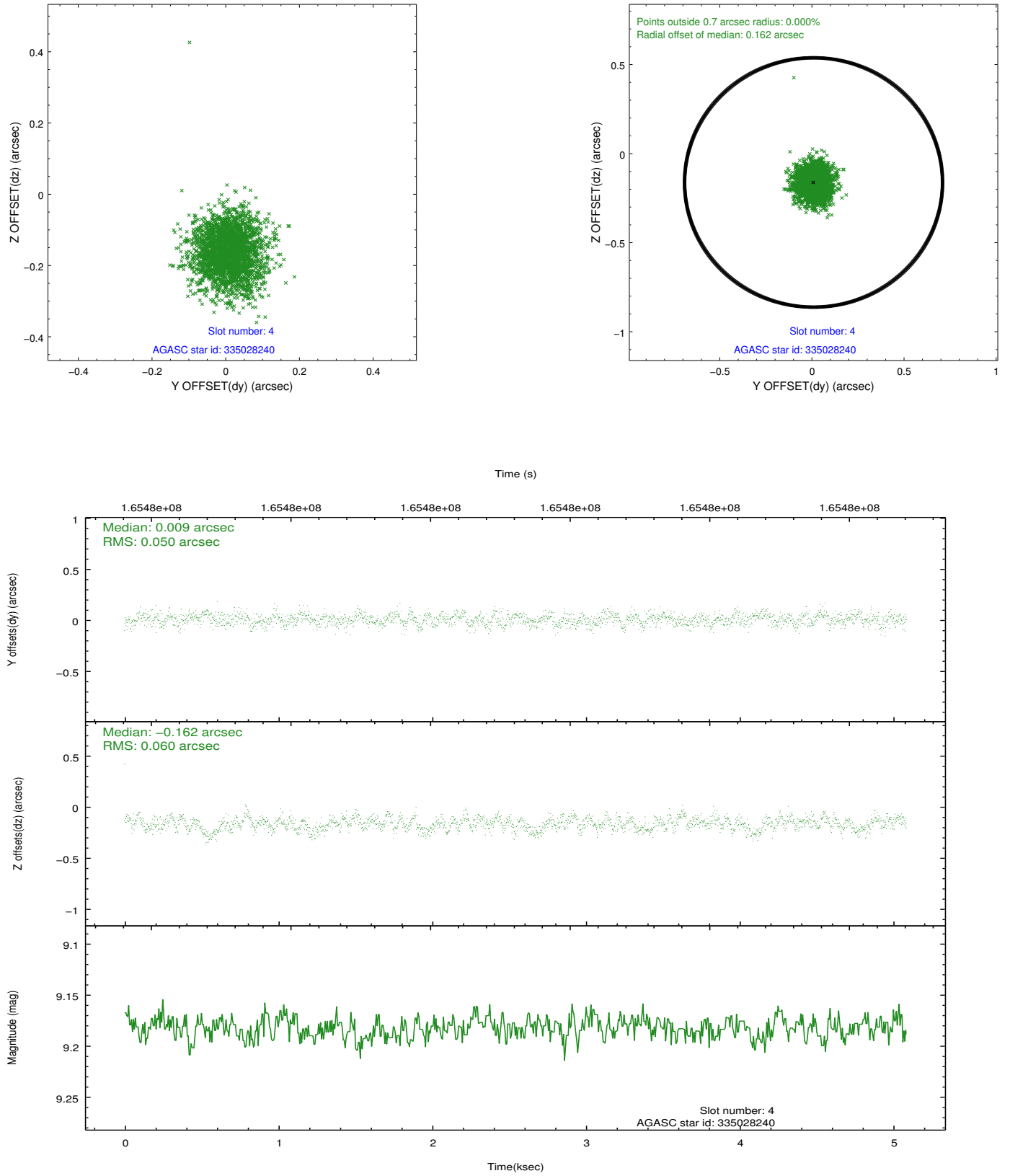
slot	status	id	mag	n_pts	med_dy	med_dz	dr1	dr2	ra	dec	mean_y	mean_z
0	FID	ACIS-I-1	7.25	1241	-0.008	0.009	0.007	0.011	0.000000	0.000000	937.78	-829.49
1	FID	ACIS-I-5	7.24	1241	-0.060	0.038	0.006	0.010	0.000000	0.000000	-1809.69	1067.47
2	FID	ACIS-I-6	7.26	1241	-0.023	0.023	0.006	0.011	0.000000	0.000000	402.05	1713.28
3	GUIDE	335027640	9.10	2481	-0.006	0.164	0.087	0.146	218.092211	33.193770	-1202.85	-709.46
4	GUIDE	335028240	9.18	2482	0.009	-0.162	0.083	0.132	216.746851	33.385009	2372.89	1309.20
5	GUIDE	335028696	9.22	2480	0.067	0.195	0.097	0.152	217.260519	33.844112	2212.48	-943.03
6	GUIDE	335029384	8.48	2482	0.031	-0.093	0.079	0.129	217.848061	33.088477	-874.00	50.01
7	GUIDE	335029808	9.07	2481	-0.105	-0.094	0.077	0.126	216.789548	33.180488	1811.74	1803.37

2.4 Star Slots

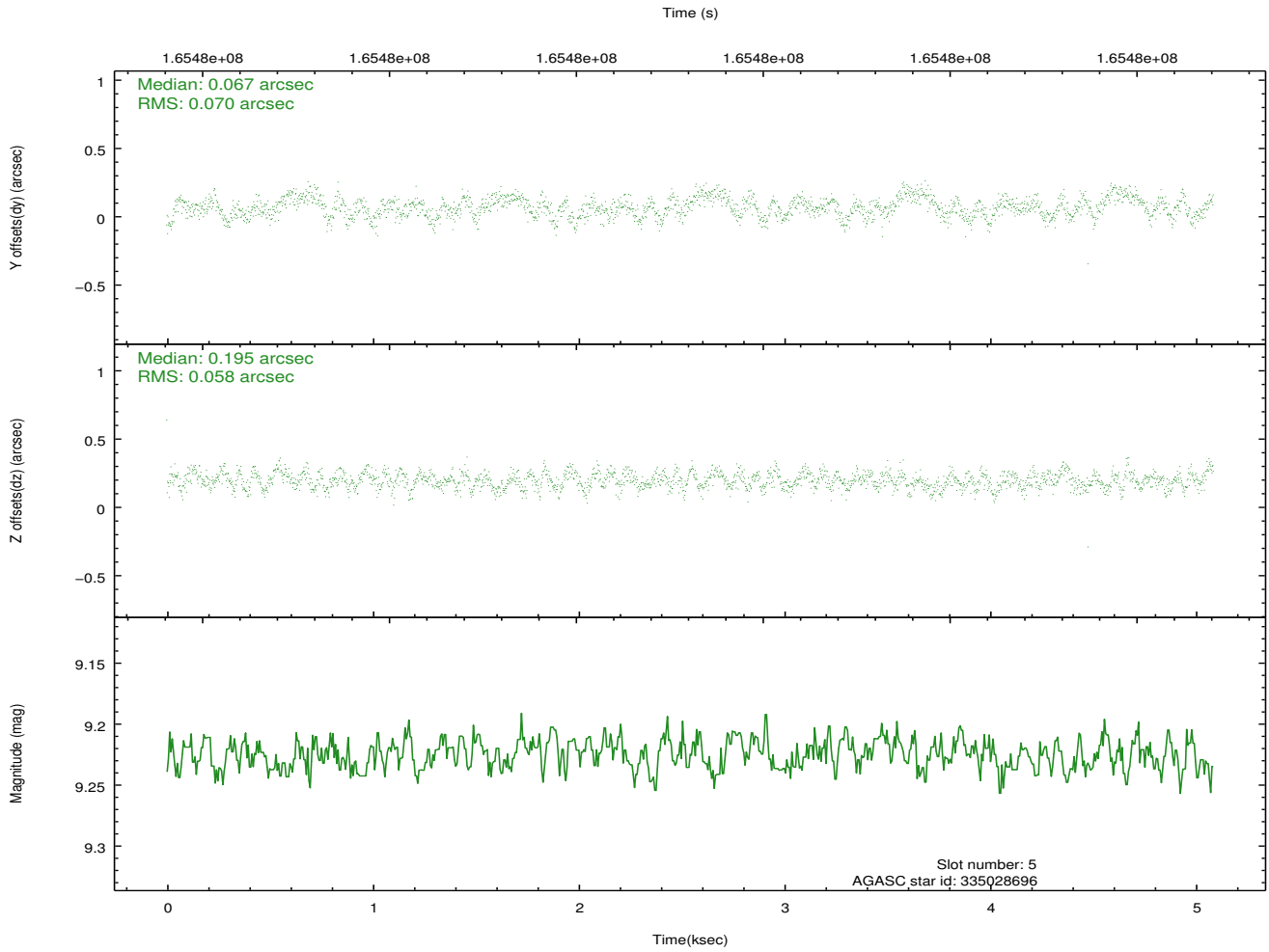
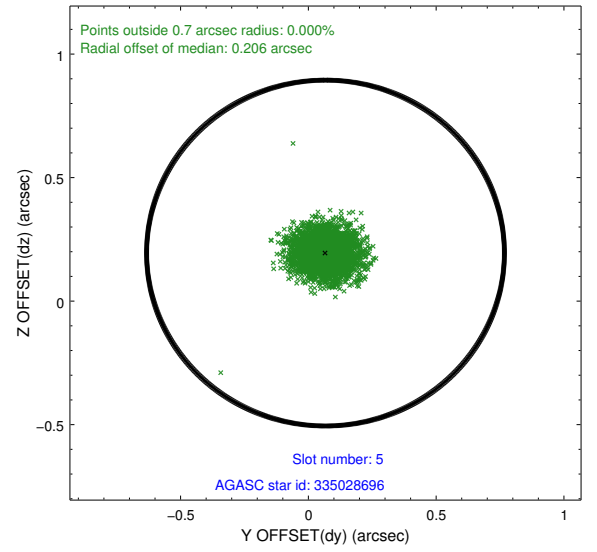
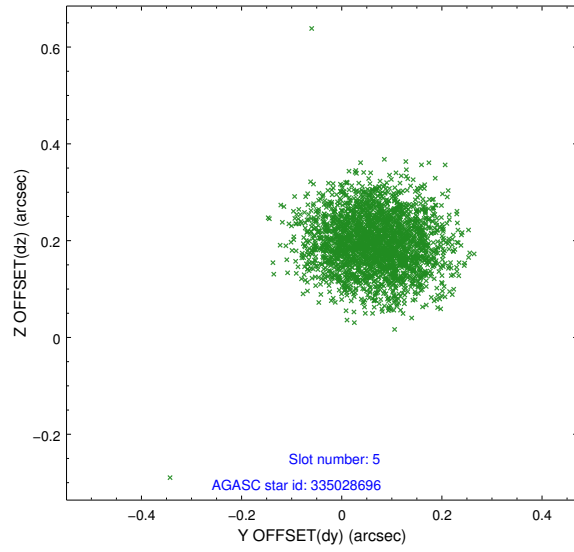
2.4.1 Slot 3



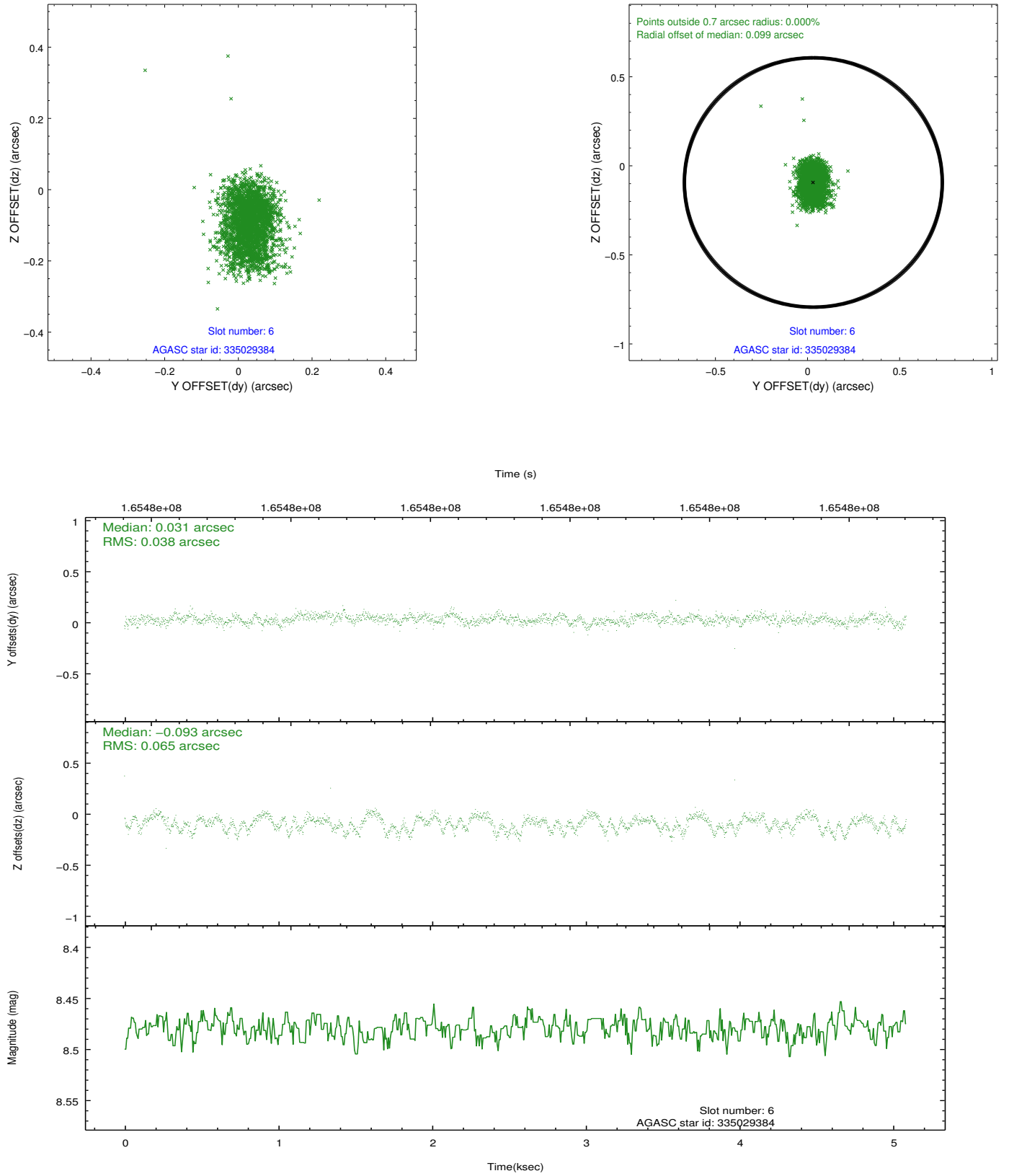
2.4.2 Slot 4



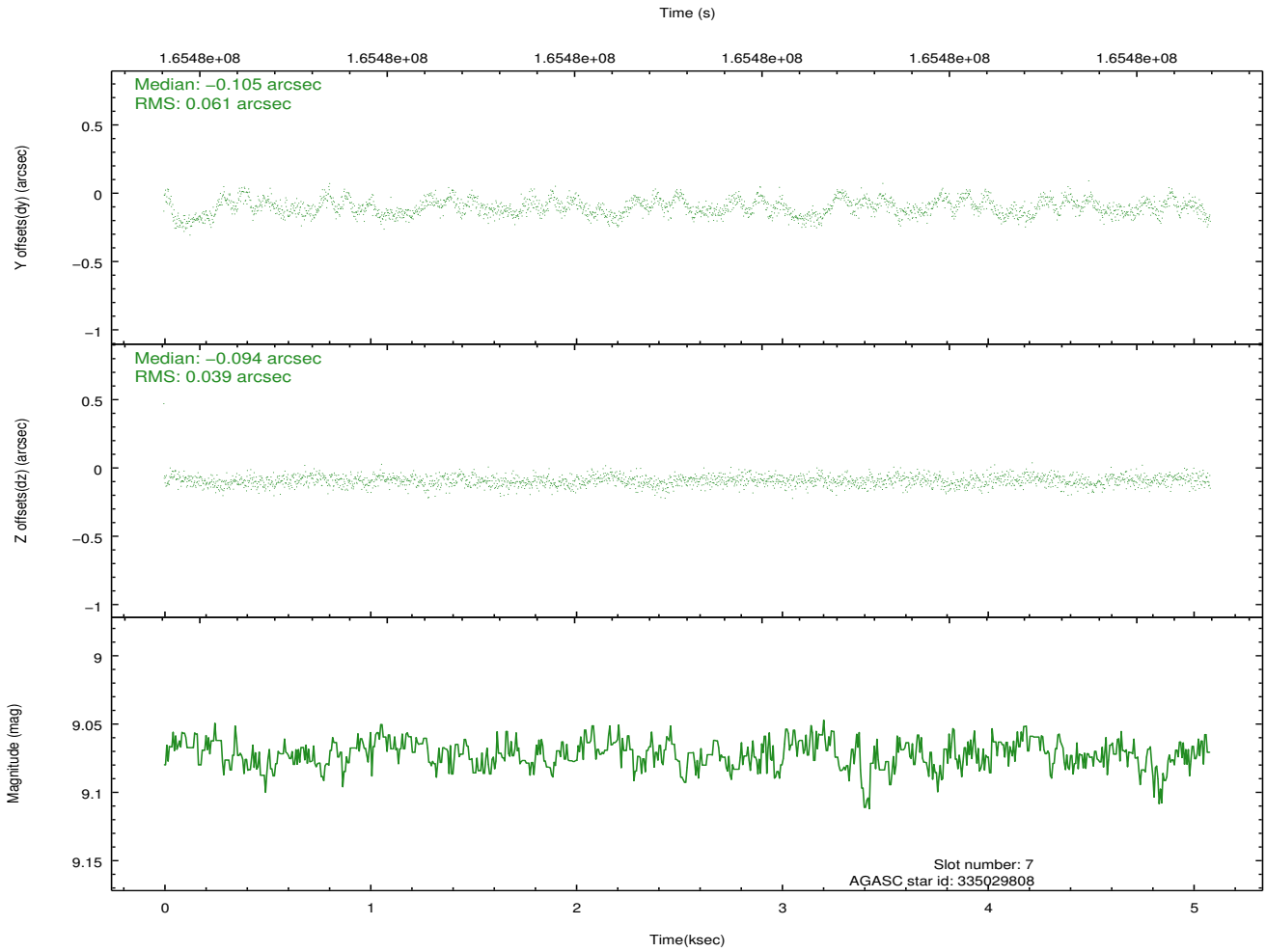
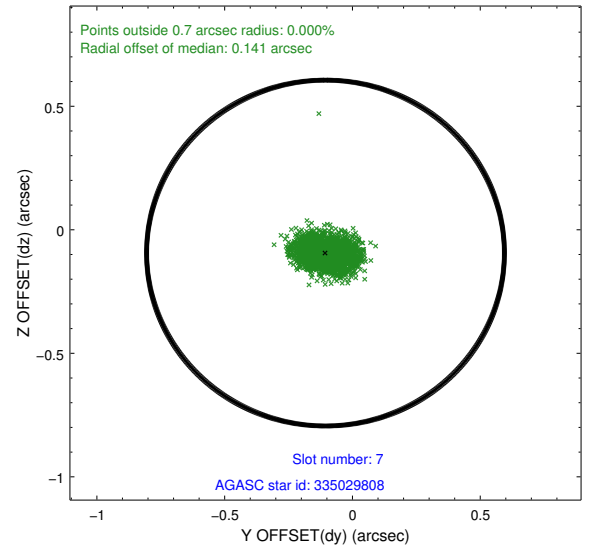
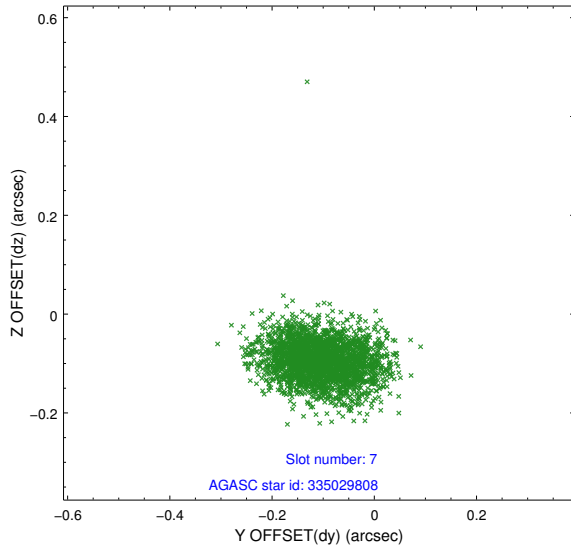
2.4.3 Slot 5



2.4.4 Slot 6

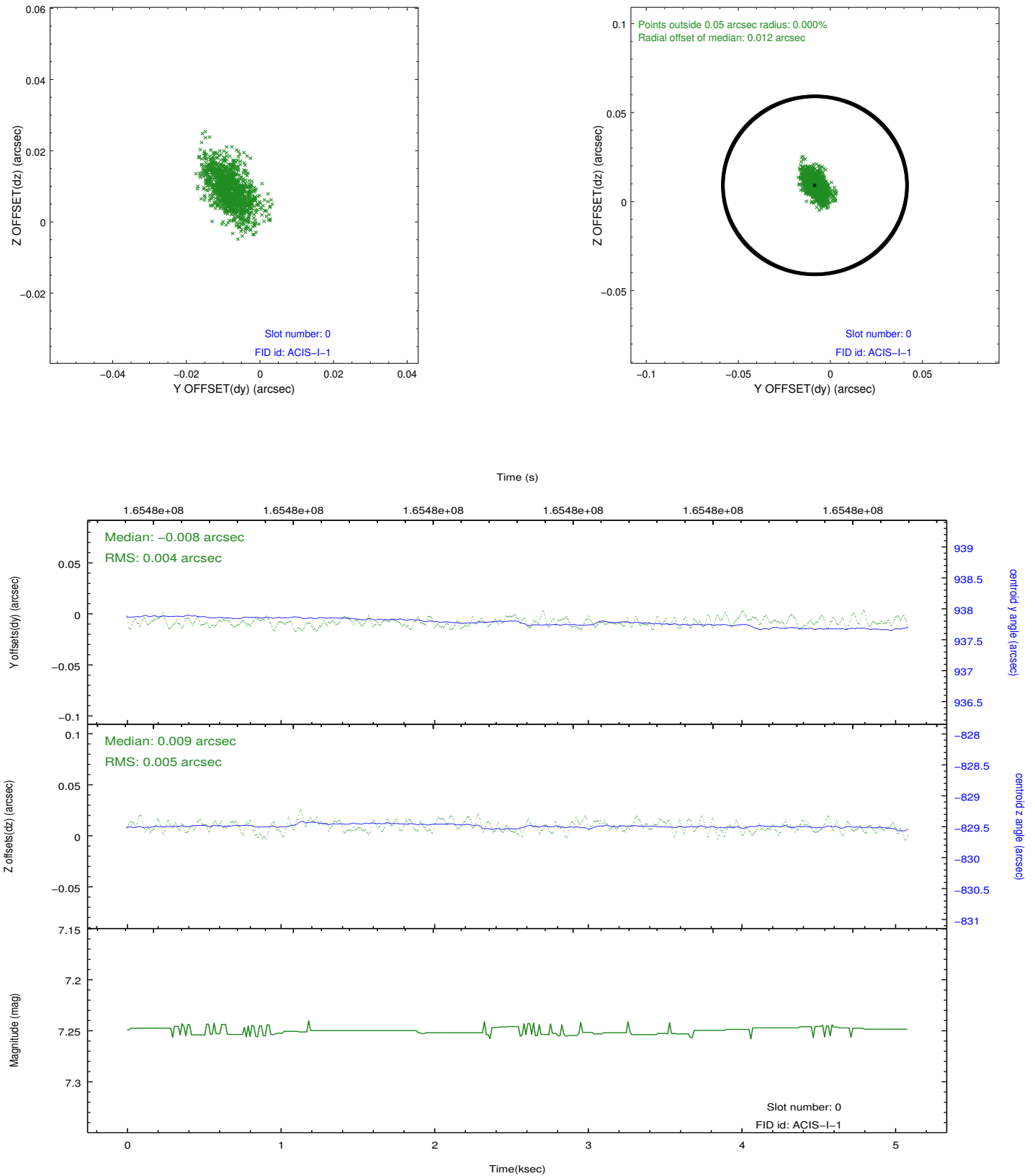


2.4.5 Slot 7

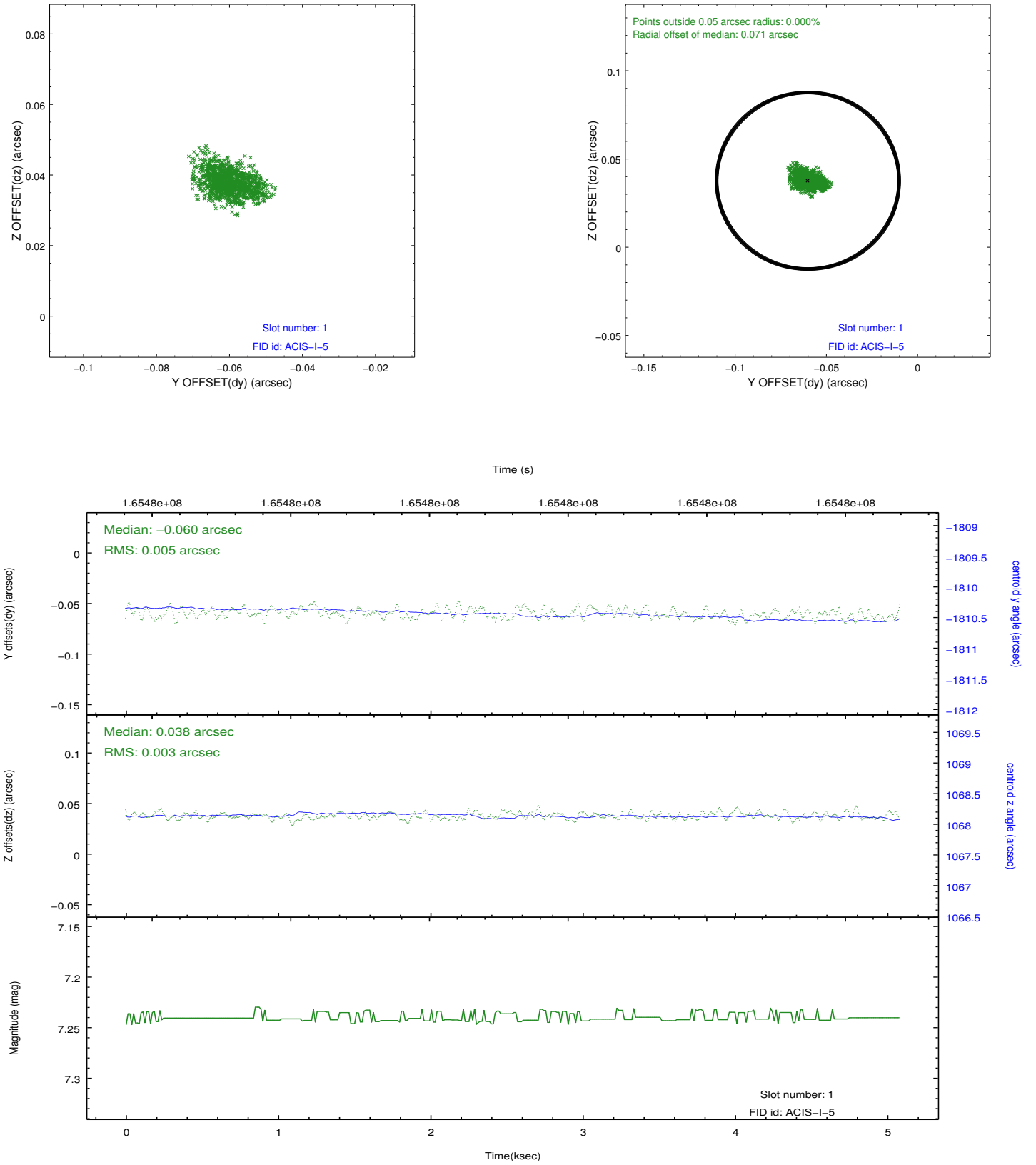


2.5 FID Slots

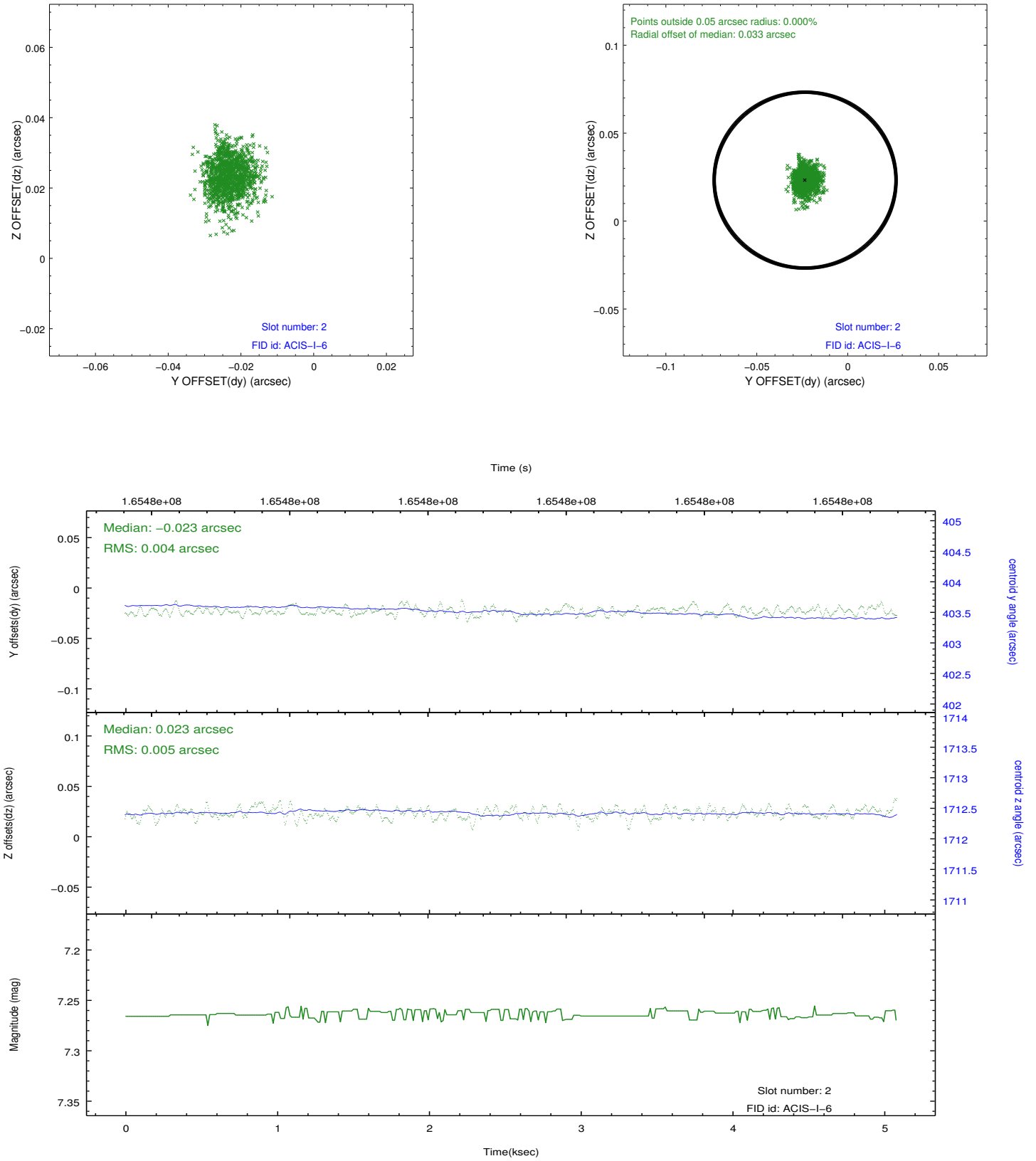
2.5.1 Slot 0



2.5.2 Slot 1



2.5.3 Slot 2



A Summary

A.1 Status

V&V Scientist	Jen Lauer
V&V Date (YYYY-MM-DD)	2012.11.09
V&V Edition	1
V&V Disposition and Status	OK
V&V Charge Time	4.677

A.2 Comments