

V&V Reference Report

L2 ASCDS Version : 8.4.5

Observation 4243 - L2 Version 3
Chandra X-Ray Center

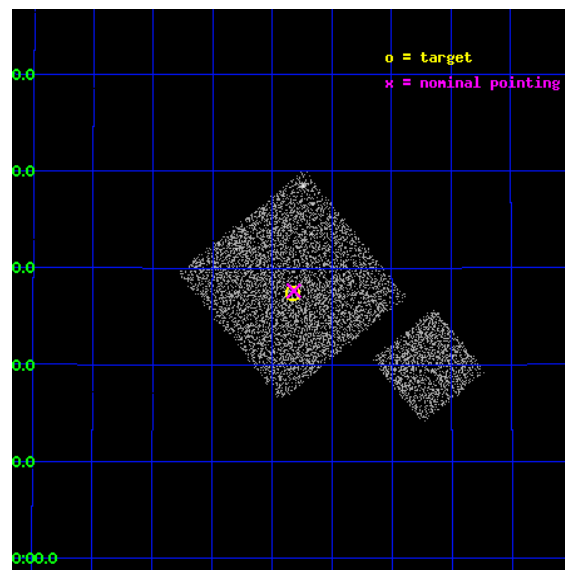
L2 Processing Date : Oct 24 2012

Contents

1	Front	2
2	OBI	3
2.1	OBI	3
2.1.1	Images	3
2.1.2	Bias	3
2.1.3	Parameters	4
2.1.4	Events	4
2.2	Compared Parameters	5
2.3	Aspect	6
2.4	Star Slots	9
2.4.1	Slot 3	9
2.4.2	Slot 4	10
2.4.3	Slot 5	11
2.4.4	Slot 6	12
2.4.5	Slot 7	13
2.5	FID Slots	14
2.5.1	Slot 0	14
2.5.2	Slot 1	15
2.5.3	Slot 2	16
A	Summary	17
A.1	Status	17
A.2	Comments	17

1 Front

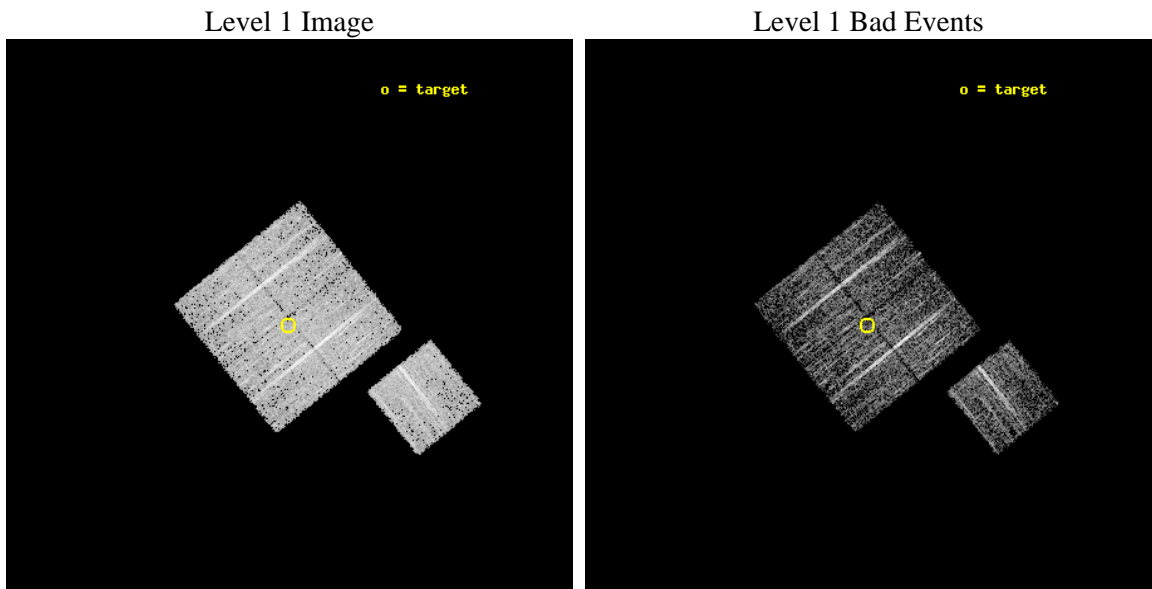
seq_num	900286	Sequence number
obs_id	4243	Observation id
title	A CHANDRA WIDE-FIELD SURVEY TO MAP THE COSMIC WEB AND INVESTIGATE THE EVOLUTION OF NUCLEAR ACCRETION	Proposal title
observer	Dr. Christine Jones	Principal investigator
object	SS6	Source name
dtcycle	0	
cycle	P	events from which exps? Prim/Second/Both
ra_targ	216.957163	Observer's specified target RA [deg]
dec_targ	33.456918	Observer's specified target Dec [deg]
ra_nom	216.95456058743	Nominal RA [deg]
dec_nom	33.460993931928	Nominal Dec [deg]
roll_nom	141.01012672186	Nominal Roll [deg]
revision	3	Processing version of data
ontime	4674.2082962096	Sum of GTIs [s]
livetime	4613.1363237175	Livetime [s]
ontime0	4674.0851562619	Sum of GTIs [s]
ontime1	4674.126216203	Sum of GTIs [s]
ontime2	4674.1672562063	Sum of GTIs [s]
ontime3	4674.2082962096	Sum of GTIs [s]
ontime6	4674.0441162586	Sum of GTIs [s]
l2events	9453	Number of level 2 events



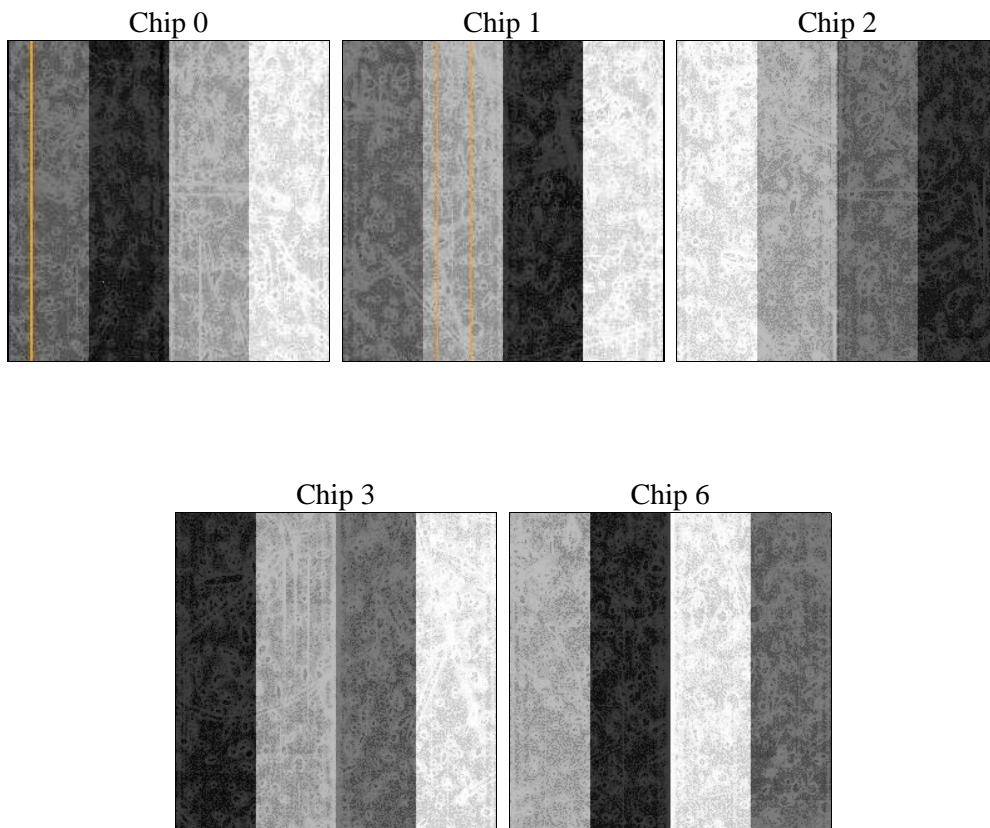
2 OBI

2.1 OBI

2.1.1 Images



2.1.2 Bias



2.1.3 Parameters

obi_num	0	Obi number	sched_exp_time	4900.000000	[s] Scheduled observation exposure time
ascdsver	8.4.5	Processing system revision	ontime	4674.2082962096	Sum of GTIs [s]
caldsver	4.5.2	 	ontime0	4674.0851562619	Sum of GTIs [s]
date	2012-10-24T23:42:57	Date and time of file creation	ontime1	4674.126216203	Sum of GTIs [s]
revision	3	Processing version of data	ontime2	4674.1672562063	Sum of GTIs [s]
			ontime3	4674.2082962096	Sum of GTIs [s]
			ontime6	4674.0441162586	Sum of GTIs [s]
			l1events	116113	Number of level 1 events

2.1.4 Events

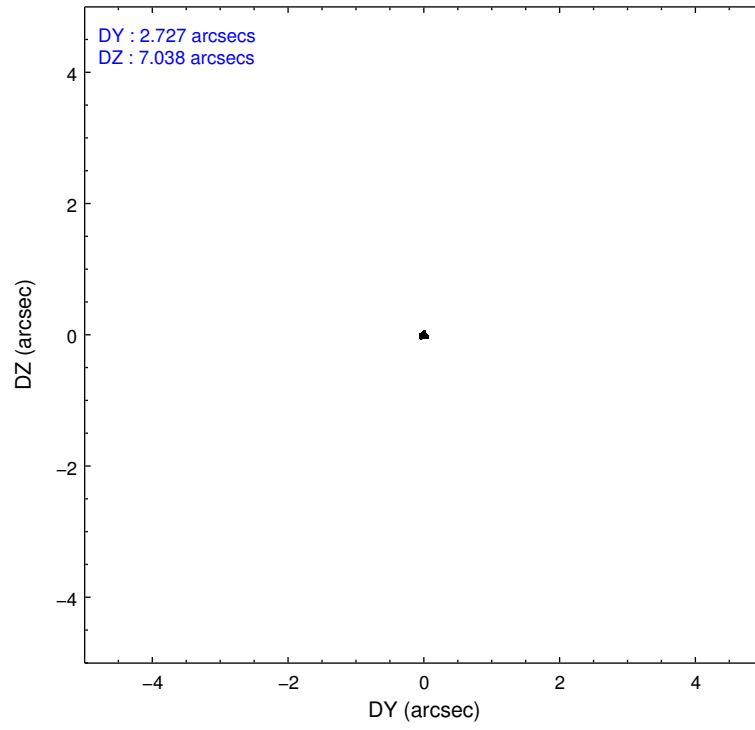
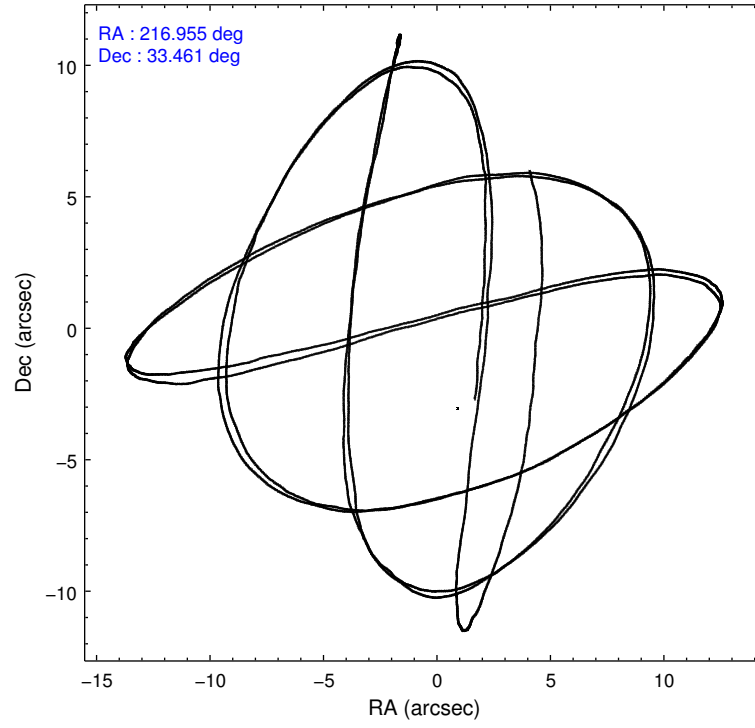
	ccd 0	ccd 1	ccd 2	ccd 3	ccd 6
level 1 events	22162	21971	24766	23596	23618
rejected events	19855	19550	22484	21414	21275
rejected %	89%	88%	90%	90%	90%

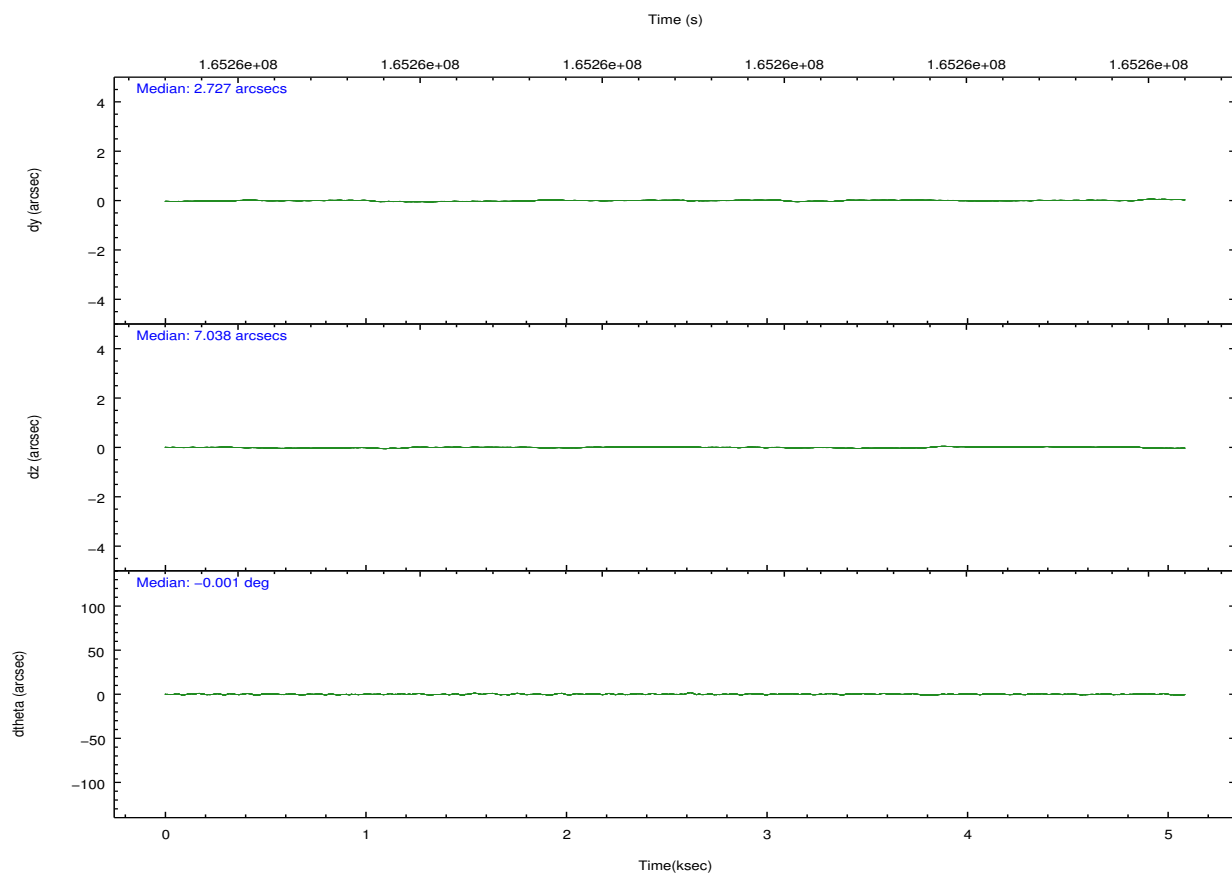
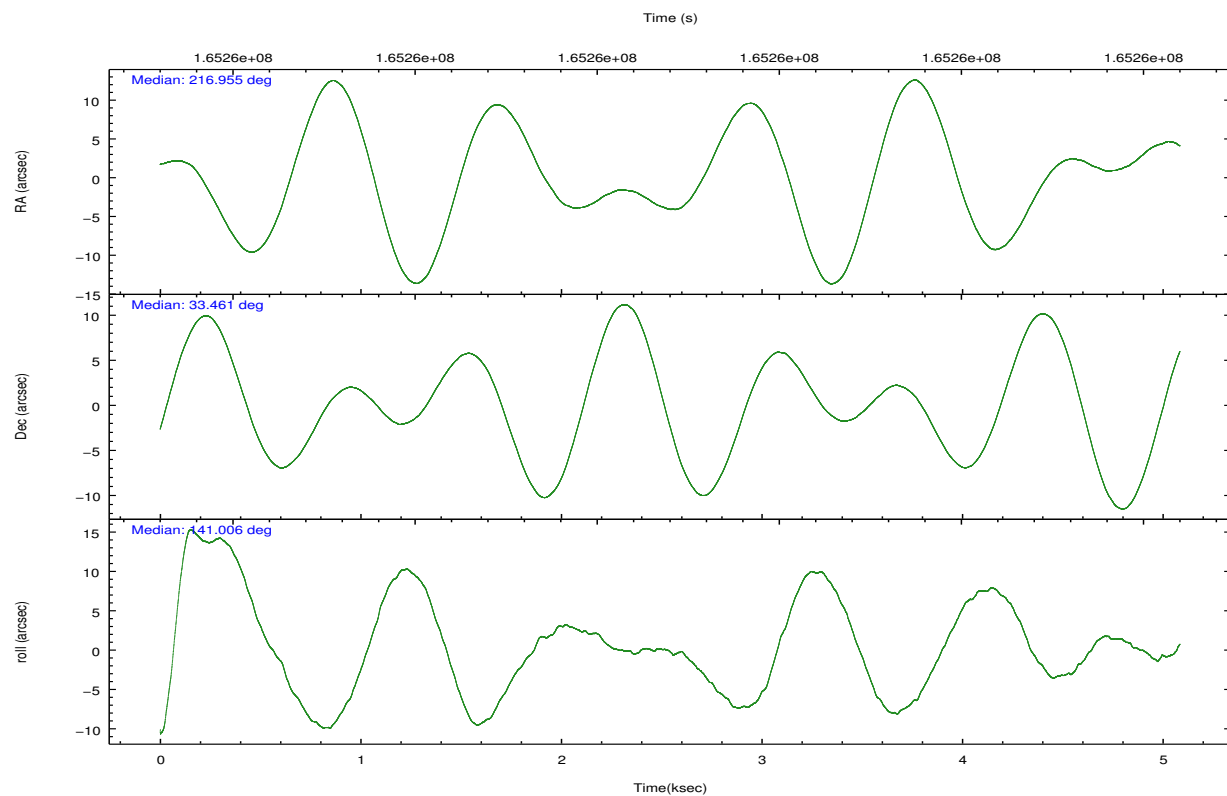
	ccd 0	ccd 1	ccd 2	ccd 3	ccd 6
grade 0 events	846	842	873	778	849
	3%	3%	3%	3%	3%
grade 1 events	15	12	7	10	15
	0%	0%	0%	0%	0%
grade 2 events	526	515	499	491	507
	2%	2%	2%	2%	2%
grade 3 events	275	292	262	265	255
	1%	1%	1%	1%	1%
grade 4 events	256	277	264	261	256
	1%	1%	1%	1%	1%
grade 5 events	689	696	669	787	742
	3%	3%	2%	3%	3%
grade 6 events	408	495	387	389	479
	1%	2%	1%	1%	2%
grade 7 events	19147	18842	21805	20615	20515
	86%	85%	88%	87%	86%

2.2 Compared Parameters

Parameter	Planned	Actual	Parameter	Planned	Actual
Instrument	ACIS	ACIS	Obspar format version number	7	7
Detector	ACIS-01236	ACIS-01236	Obspar file type	PREDICTED	ACTUAL
Grating	NONE	NONE	Obspar update status	NONE	UPDATED
Data mode	VFAINT	VFAINT	Number of optional ACIS chips dropped	0	0
Observation mode	POINTING	POINTING	On-chip summing requested	N	N
[deg] Pointing RA	216.986995	216.9545605874345	Subarray requested	NONE	NONE
[deg] Pointing Dec	33.456838	33.4609939319279	Alternating exposures requested	N	N
[deg] Pointing Roll	140.783550	141.0101267218646	[s] Primary exposure time	0.000000	3.1
[mm] SIM focus pos	-0.782348	-0.7809083437167272			
[mm] SIM defocus	0	0.001439871863259334			
[mm] SIM translation stage pos	-233.592463	-233.5874344608287			
[mm] SIM translation stage offset	0	-0.005018542100998502			
[s] Observation start time (MET)	165258040.184000	165257664.71934			
Observation start date	2003-03-28T16:59:36	2003-03-28T16:54:24			
[s] Observation end time (MET)	165262940.184000	165263074.66957			
Observation end date	2003-03-28T18:21:16	2003-03-28T18:24:34			
Read mode	TIMED	TIMED			

2.3 Aspect



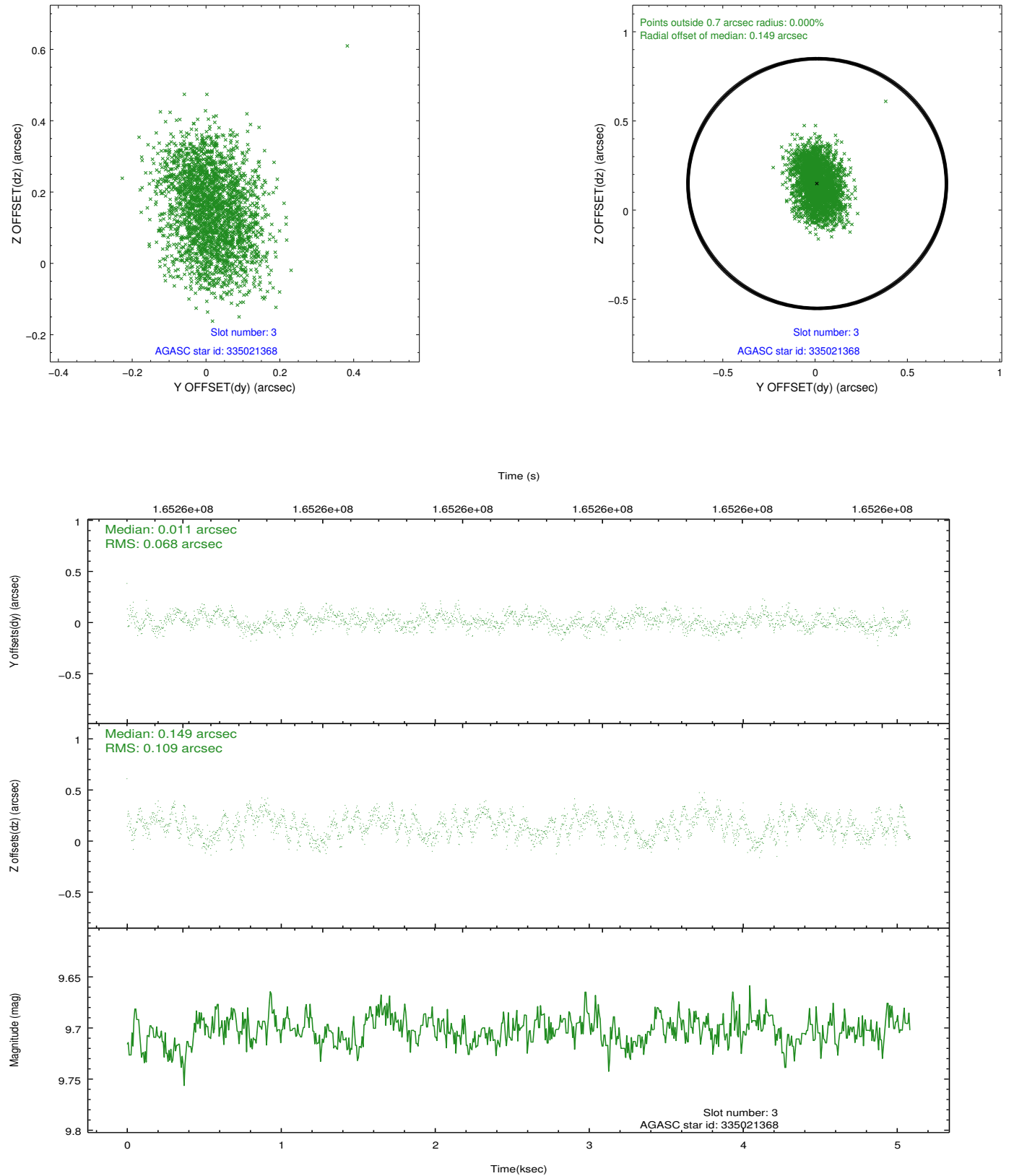


Slot Statistics

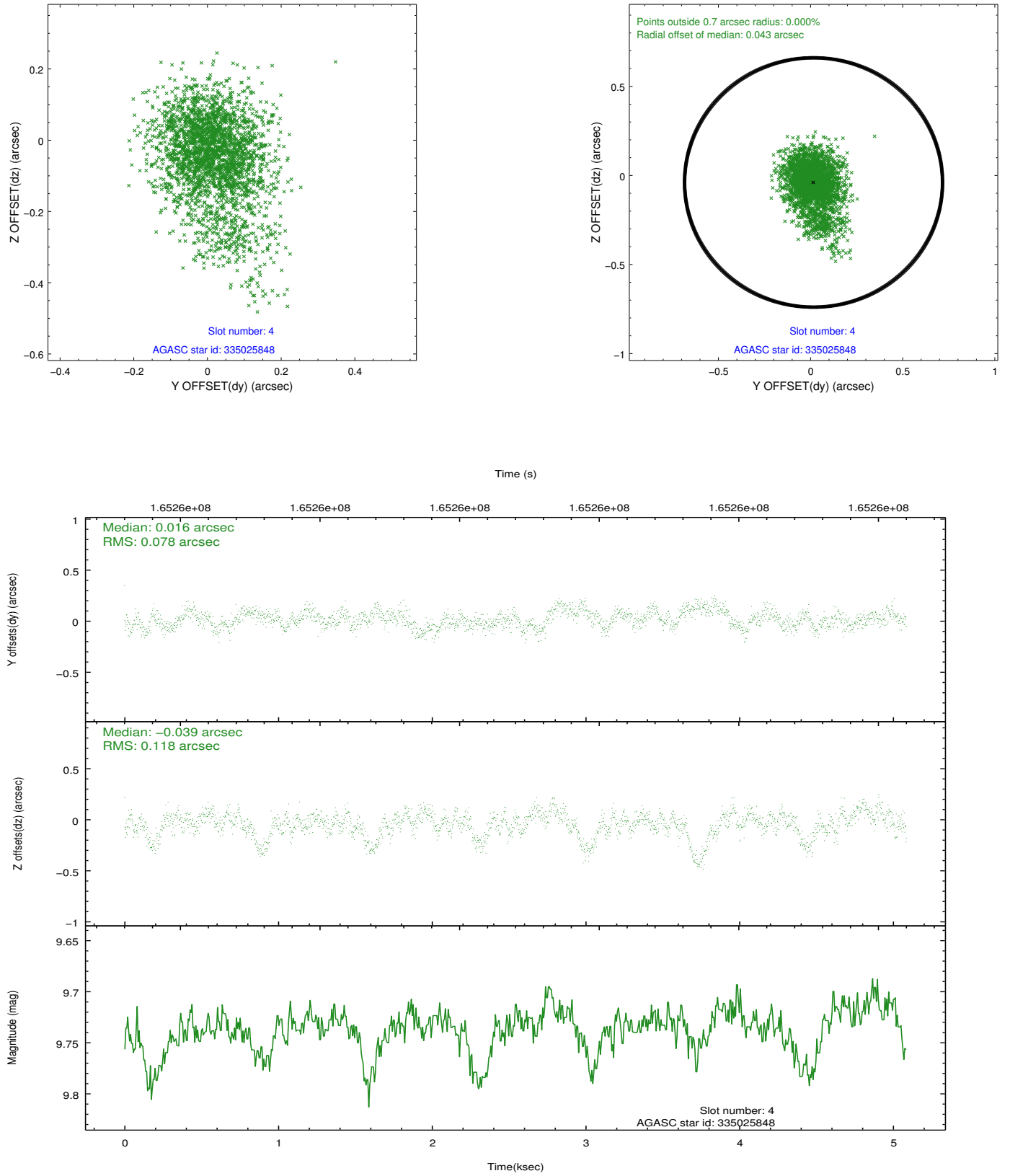
slot	status	id	mag	n_pts	med_dy	med_dz	dr1	dr2	ra	dec	mean_y	mean_z
0	FID	ACIS-I-1	7.25	1241	0.015	0.005	0.006	0.011	0.000000	0.000000	937.08	-830.44
1	FID	ACIS-I-5	7.24	1241	-0.083	0.056	0.006	0.010	0.000000	0.000000	-1810.43	1066.56
2	FID	ACIS-I-6	7.26	1241	-0.023	0.008	0.007	0.012	0.000000	0.000000	401.34	1712.33
3	GUIDE	335021368	9.70	2481	0.011	0.149	0.138	0.216	217.529643	33.934817	-164.44	-2360.76
4	GUIDE	335025848	9.74	2482	0.016	-0.039	0.141	0.263	217.530531	33.778292	-525.16	-1928.93
5	GUIDE	335028240	9.15	2482	0.021	-0.255	0.081	0.129	216.746851	33.385009	396.81	655.45
6	GUIDE	335028696	9.19	2473	0.025	0.108	0.088	0.150	217.260519	33.844112	249.34	-1597.39
7	GUIDE	335029368	10.12	2480	-0.081	0.055	0.132	0.222	217.181018	33.065030	-1344.48	721.93

2.4 Star Slots

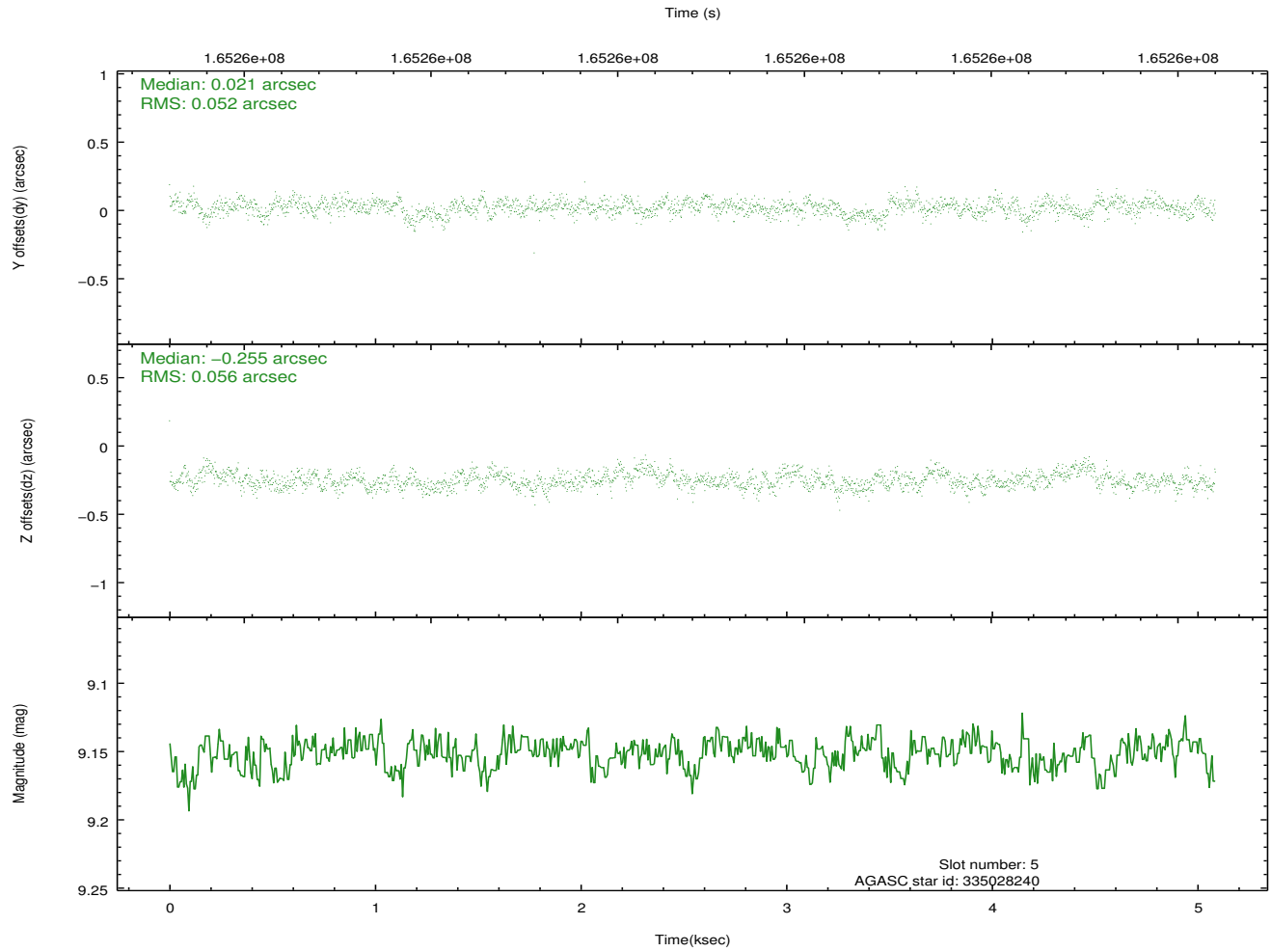
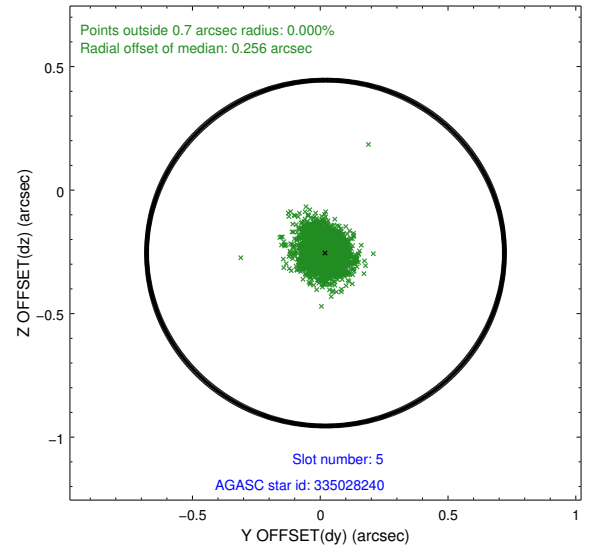
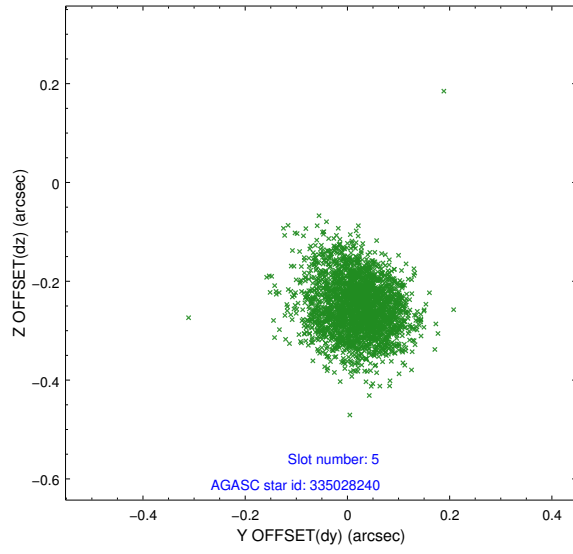
2.4.1 Slot 3



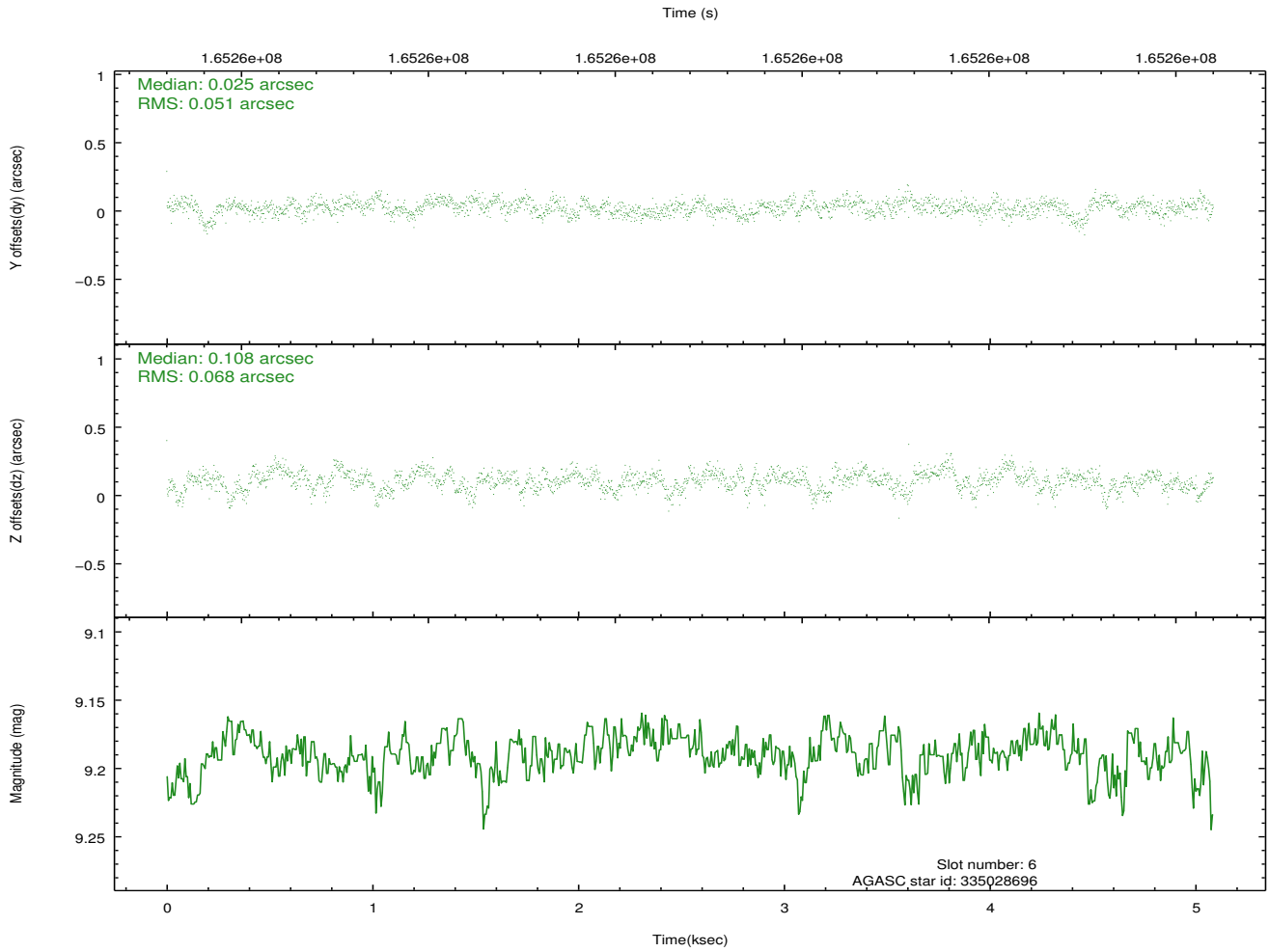
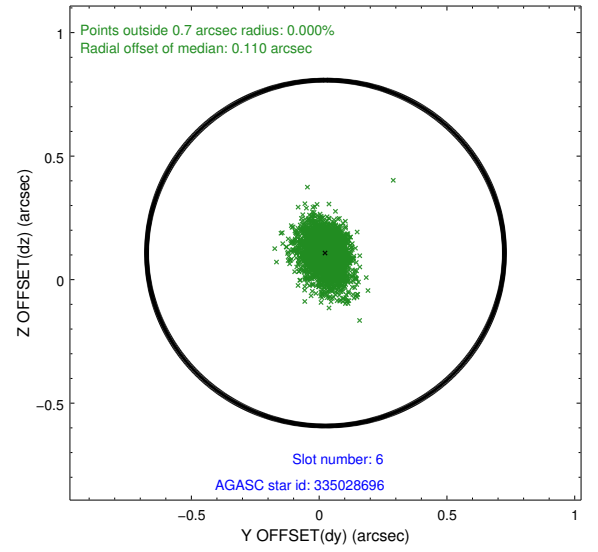
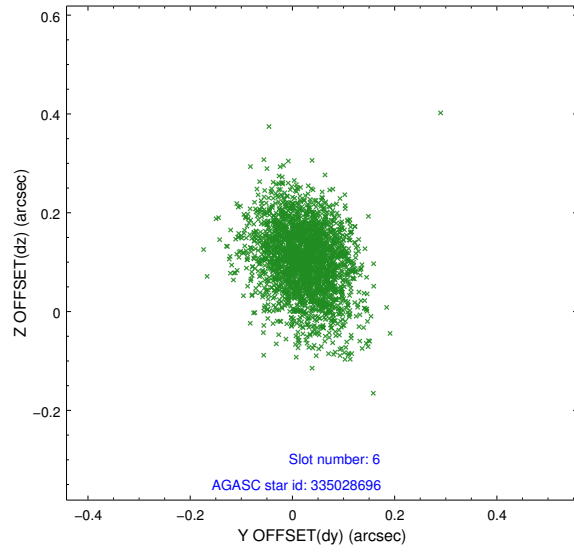
2.4.2 Slot 4



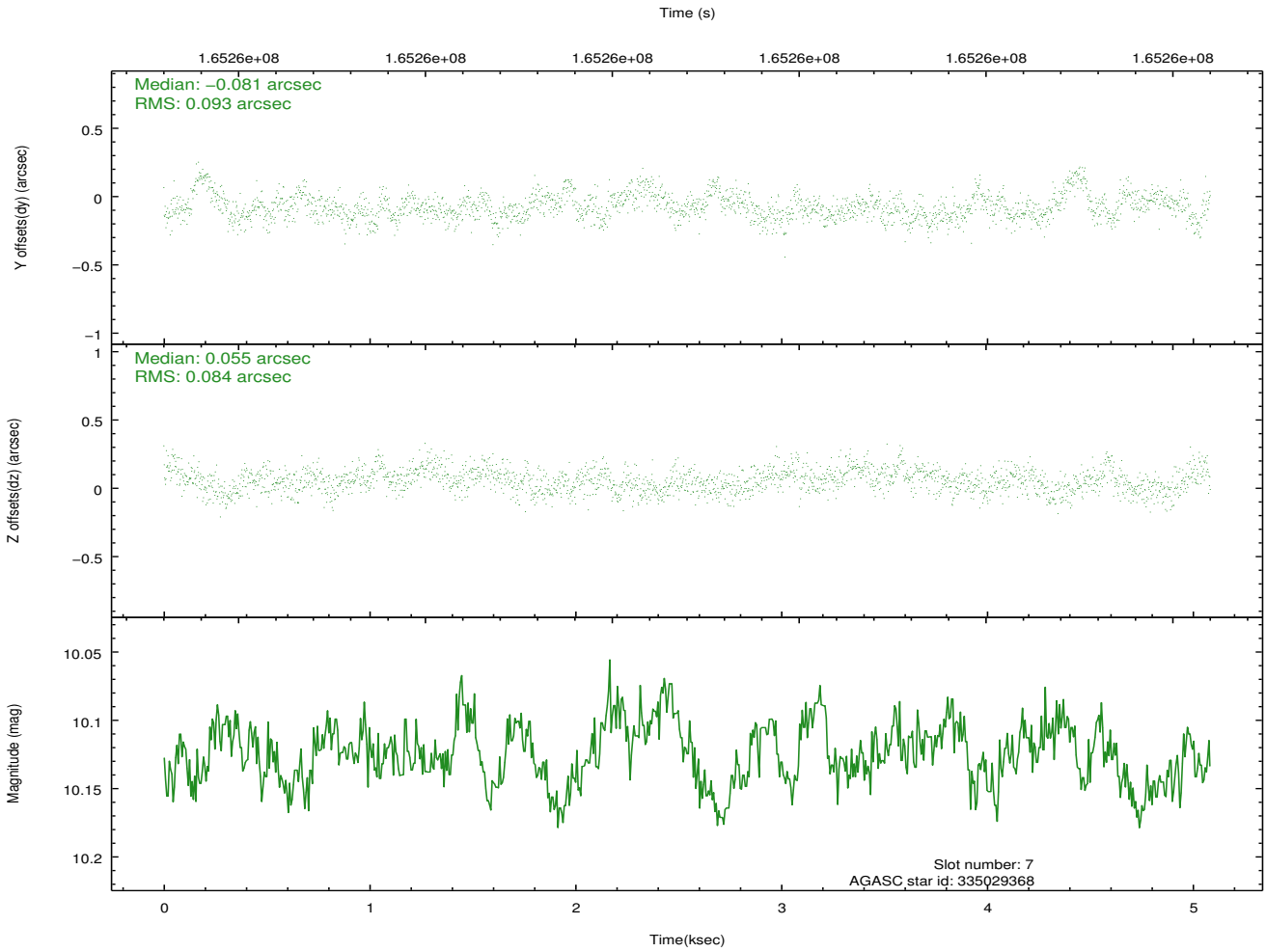
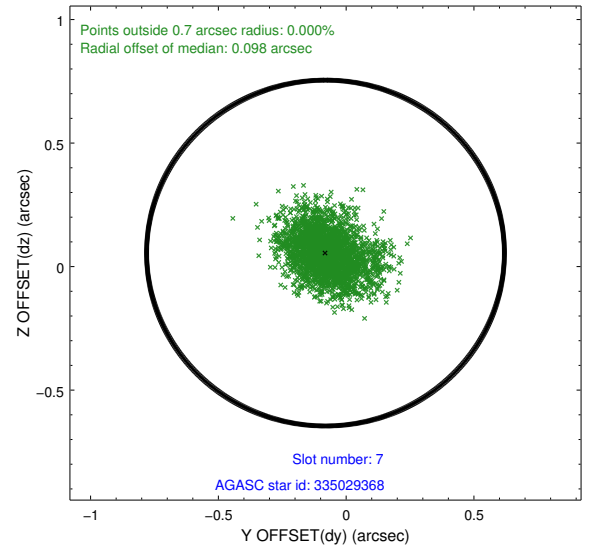
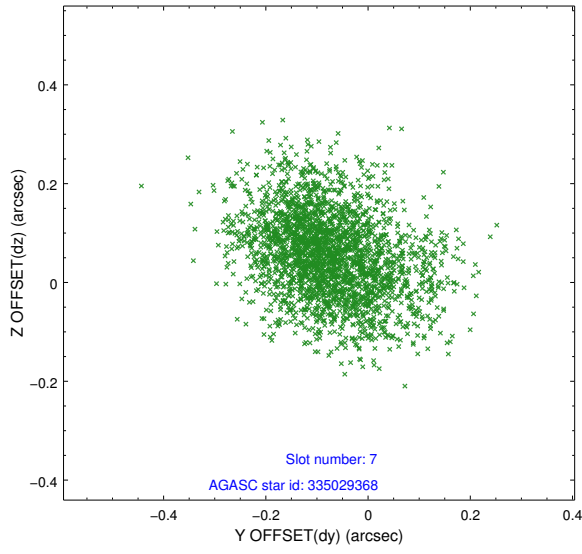
2.4.3 Slot 5



2.4.4 Slot 6

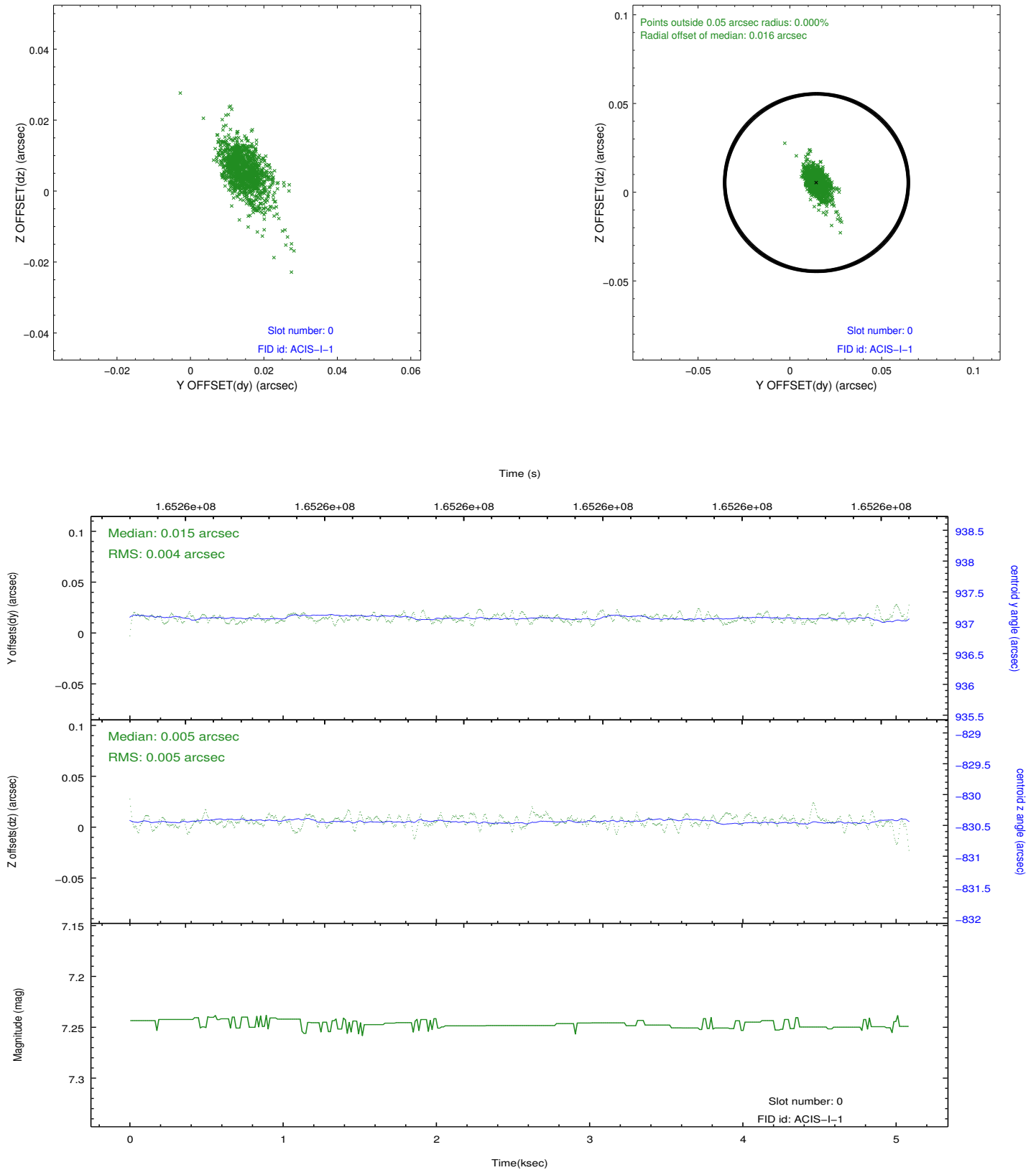


2.4.5 Slot 7

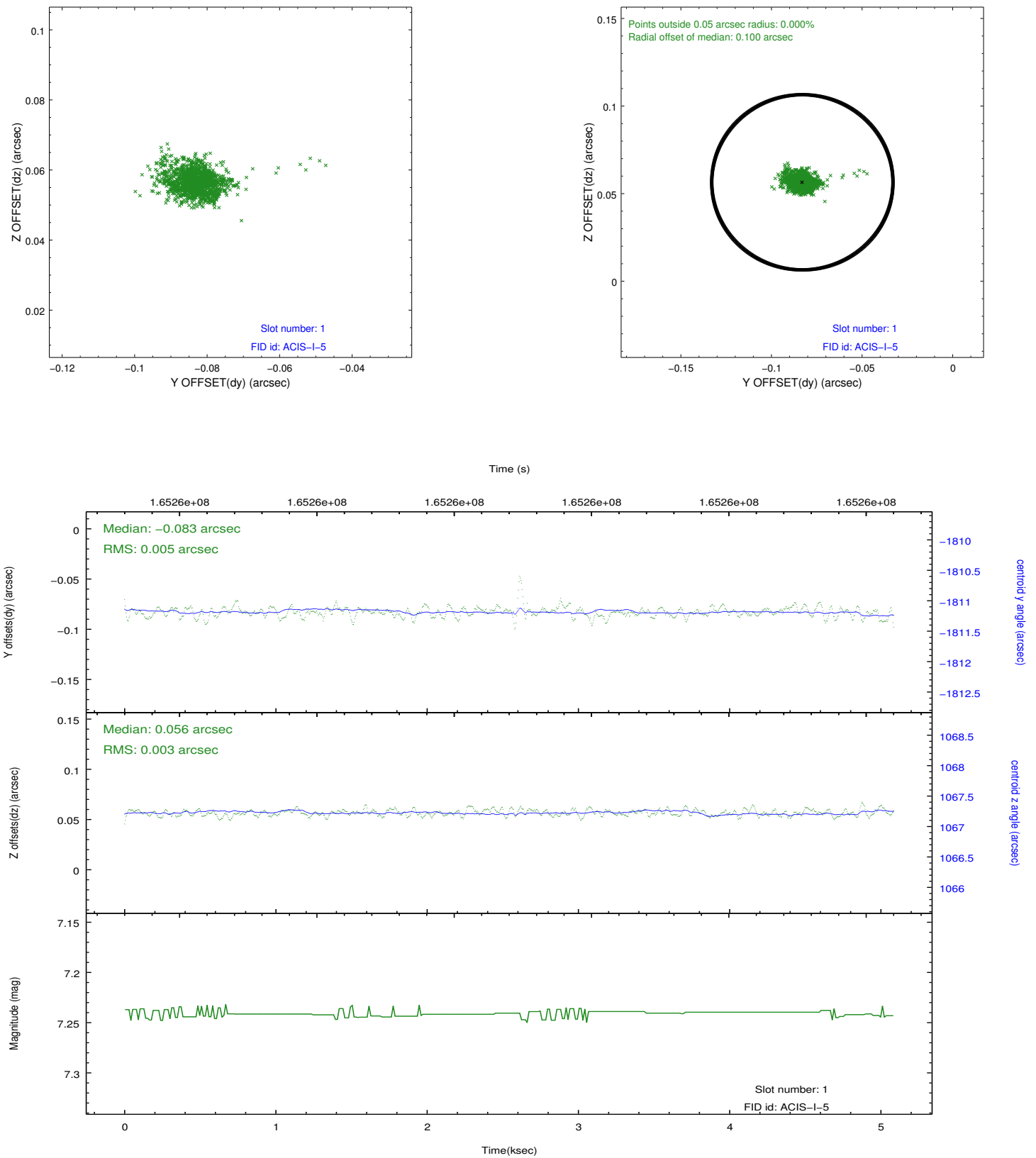


2.5 FID Slots

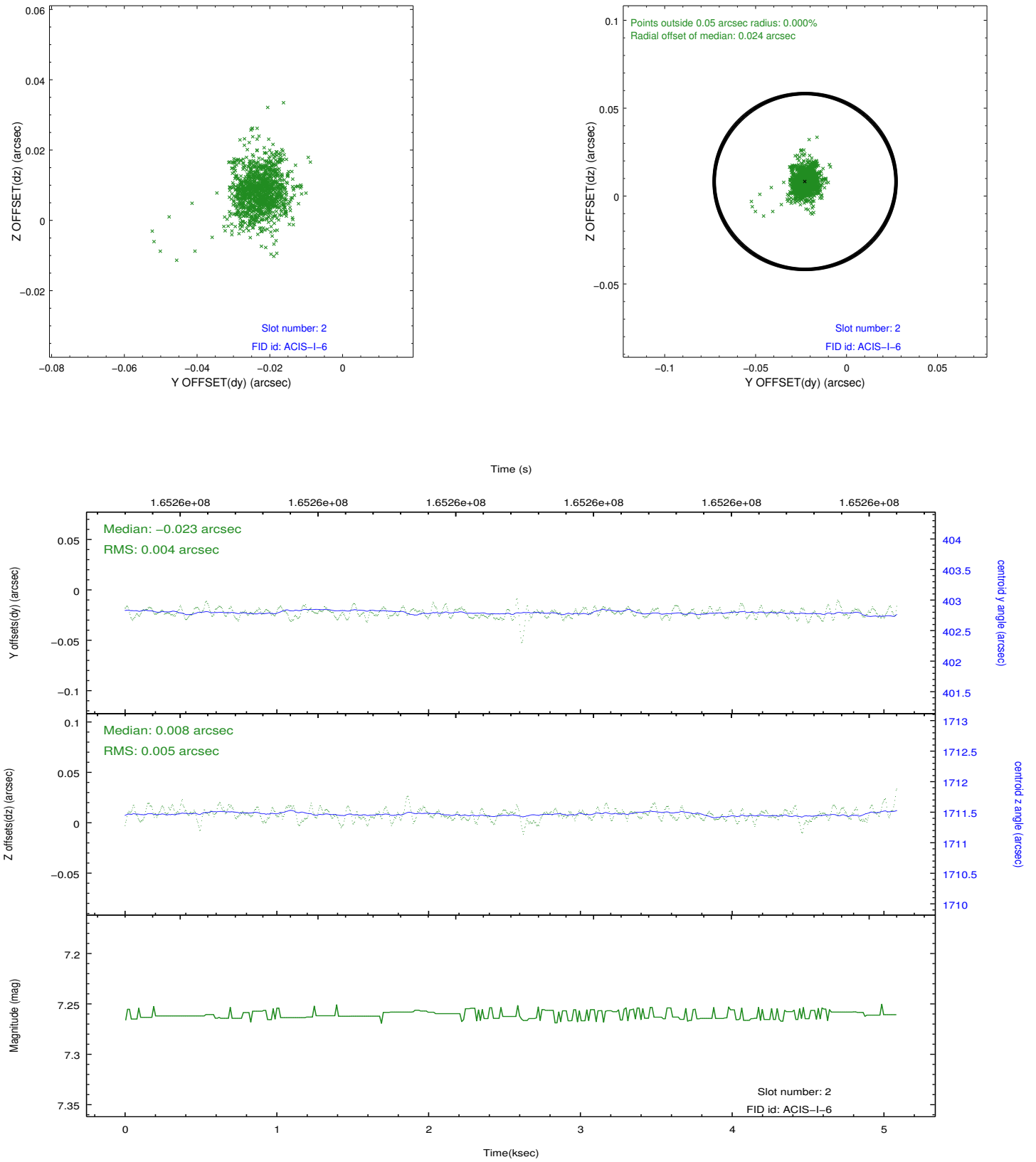
2.5.1 Slot 0



2.5.2 Slot 1



2.5.3 Slot 2



A Summary

A.1 Status

V&V Scientist	Jen Lauer
V&V Date (YYYY-MM-DD)	2012.11.09
V&V Edition	1
V&V Disposition and Status	OK
V&V Charge Time	4.675

A.2 Comments