

V&V Reference Report

L2 ASCDS Version : 8.4.5

Observation 4213 - L2 Version 3
Chandra X-Ray Center

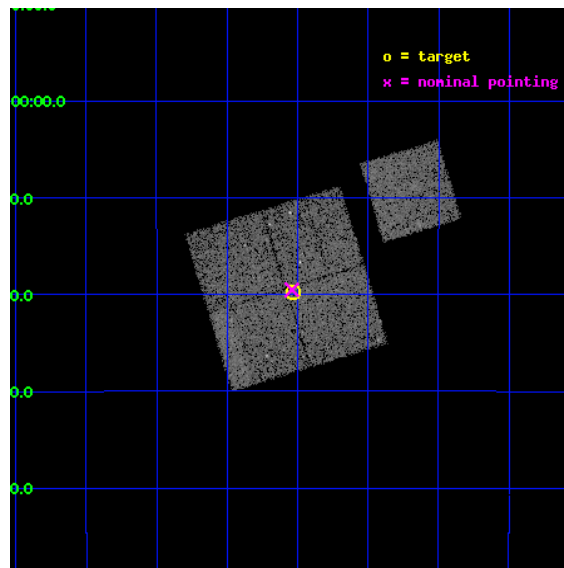
L2 Processing Date : Oct 24 2012

Contents

1	Front	2
2	OBI	3
2.1	OBI	3
2.1.1	Images	3
2.1.2	Bias	3
2.1.3	Parameters	4
2.1.4	Events	4
2.2	Compared Parameters	5
2.3	Aspect	6
2.4	Star Slots	9
2.4.1	Slot 3	9
2.4.2	Slot 4	10
2.4.3	Slot 5	11
2.4.4	Slot 6	12
2.4.5	Slot 7	13
2.5	FID Slots	14
2.5.1	Slot 0	14
2.5.2	Slot 1	15
2.5.3	Slot 2	16
A	Summary	17
A.1	Status	17
A.2	Comments	17

1 Front

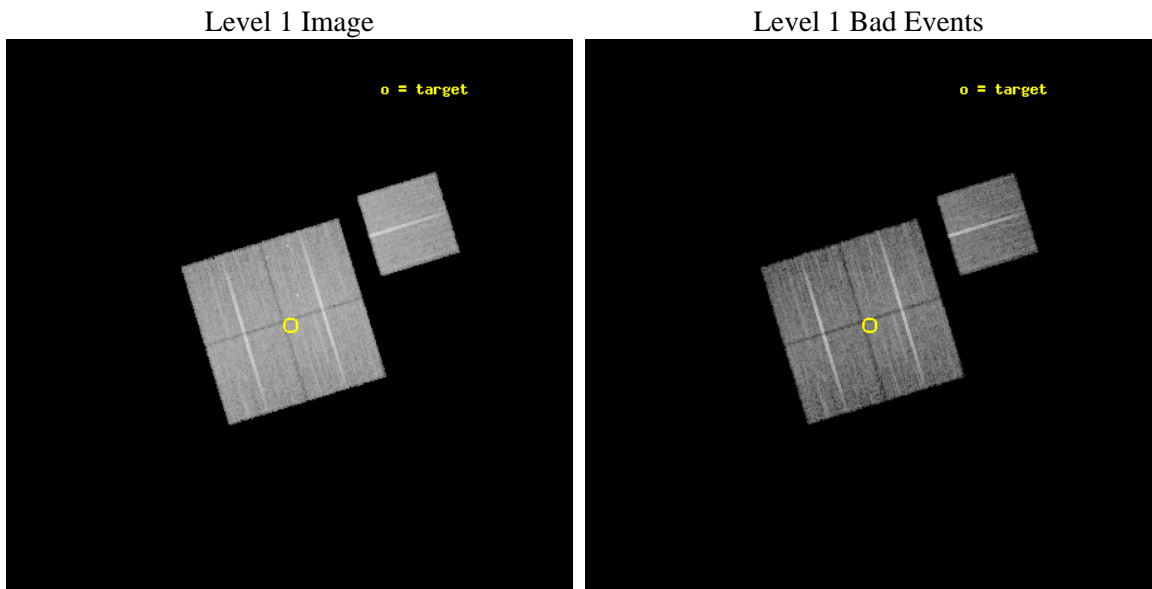
seq_num	800369	Sequence number
obs_id	4213	Observation id
title	CHANDRA OBSERVATIONS OF DLS SHEAR-SELECTED CLUSTERS	Proposal title
observer	Prof. John Hughes	Principal investigator
object	DLS J1402-1019	Source name
dtcycle	0	
cycle	P	events from which exps? Prim/Second/Both
ra_targ	210.507083	Observer's specified target RA [deg]
dec_targ	-10.328889	Observer's specified target Dec [deg]
ra_nom	210.51007799588	Nominal RA [deg]
dec_nom	-10.325372286529	Nominal Dec [deg]
roll_nom	72.971830220044	Nominal Roll [deg]
revision	3	Processing version of data
ontime	19963.999961585	Sum of GTIs [s]
livetime	19703.155604804	Livetime [s]
ontime0	19963.999961585	Sum of GTIs [s]
ontime1	19960.858981371	Sum of GTIs [s]
ontime2	19963.999961585	Sum of GTIs [s]
ontime3	19963.999961585	Sum of GTIs [s]
ontime6	19963.96520102	Sum of GTIs [s]
l2events	48301	Number of level 2 events



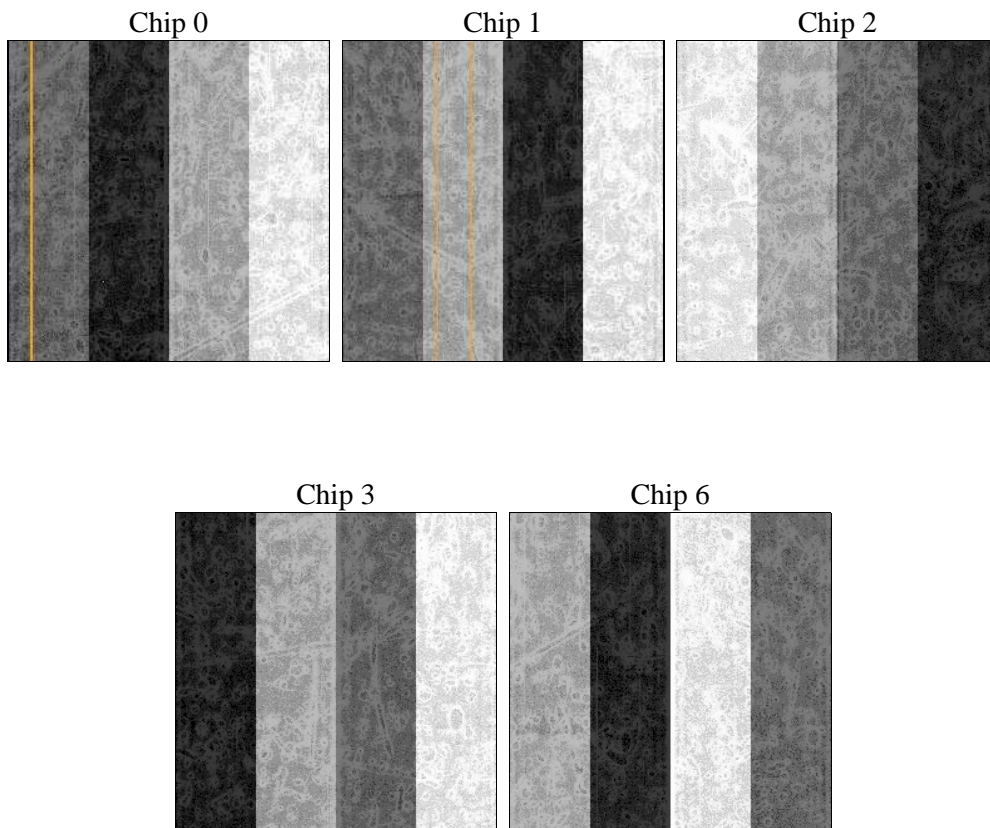
2 OBI

2.1 OBI

2.1.1 Images



2.1.2 Bias



2.1.3 Parameters

obi_num	0	Obi number	sched_exp_time	20192.000000	[s] Scheduled observation exposure time
ascdsver	8.4.5	Processing system revision	ontime	19963.999961585	Sum of GTIs [s]
caldsver	4.5.2	 	ontime0	19963.999961585	Sum of GTIs [s]
date	2012-10-24T20:08:34	Date and time of file creation	ontime1	19960.858981371	Sum of GTIs [s]
revision	3	Processing version of data	ontime2	19963.999961585	Sum of GTIs [s]
			ontime3	19963.999961585	Sum of GTIs [s]
			ontime6	19963.96520102	Sum of GTIs [s]
			l1events	529951	Number of level 1 events

2.1.4 Events

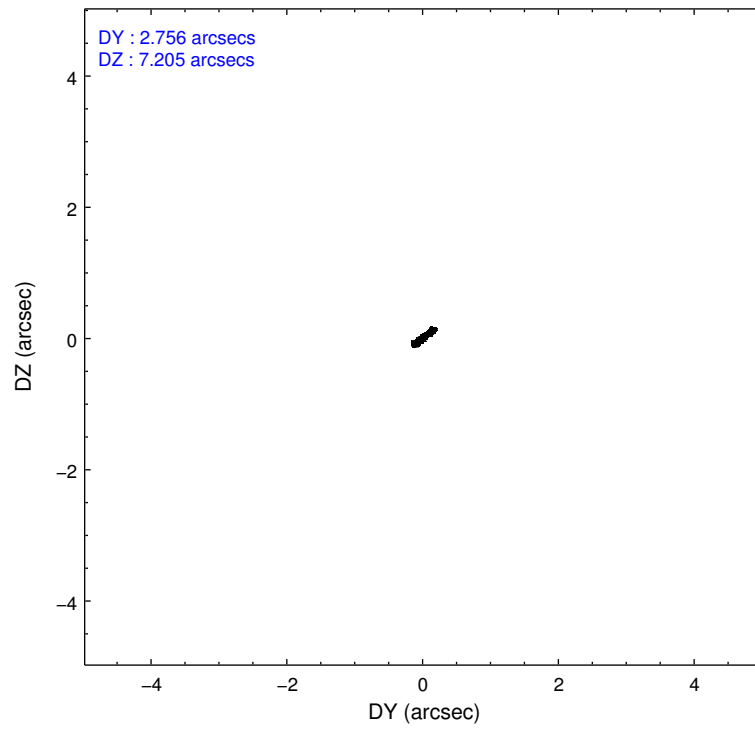
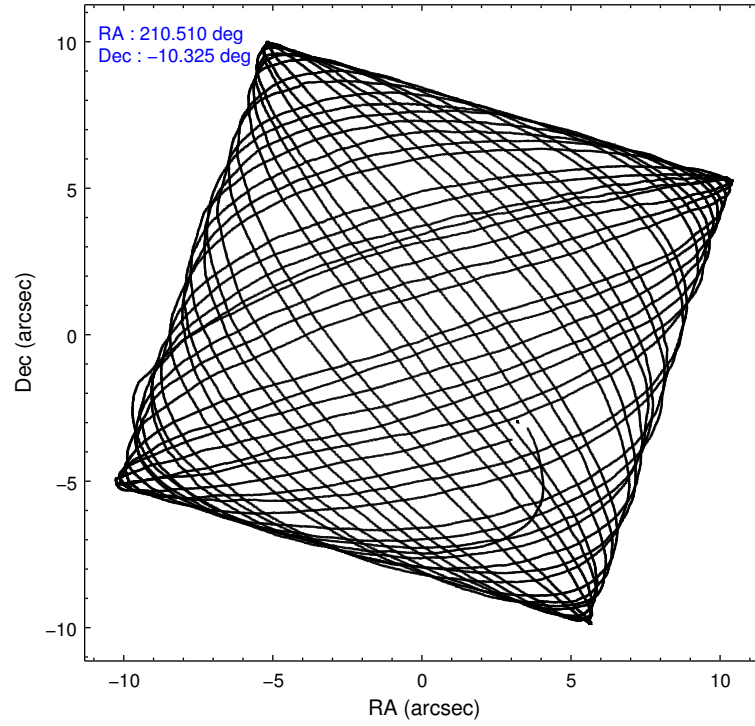
	ccd 0	ccd 1	ccd 2	ccd 3	ccd 6
level 1 events	99307	100786	114623	106913	108322
rejected events	88086	88183	102204	96401	96356
rejected %	88%	87%	89%	90%	88%

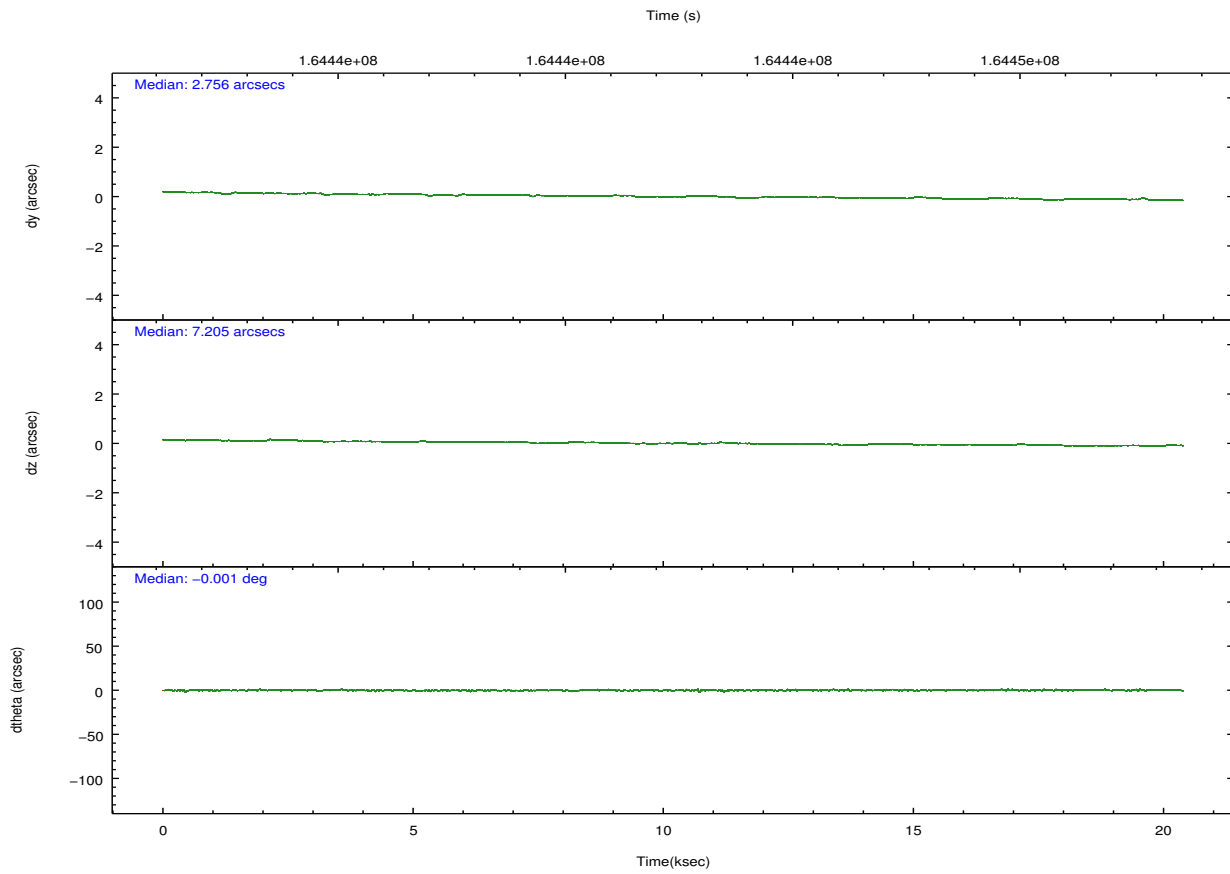
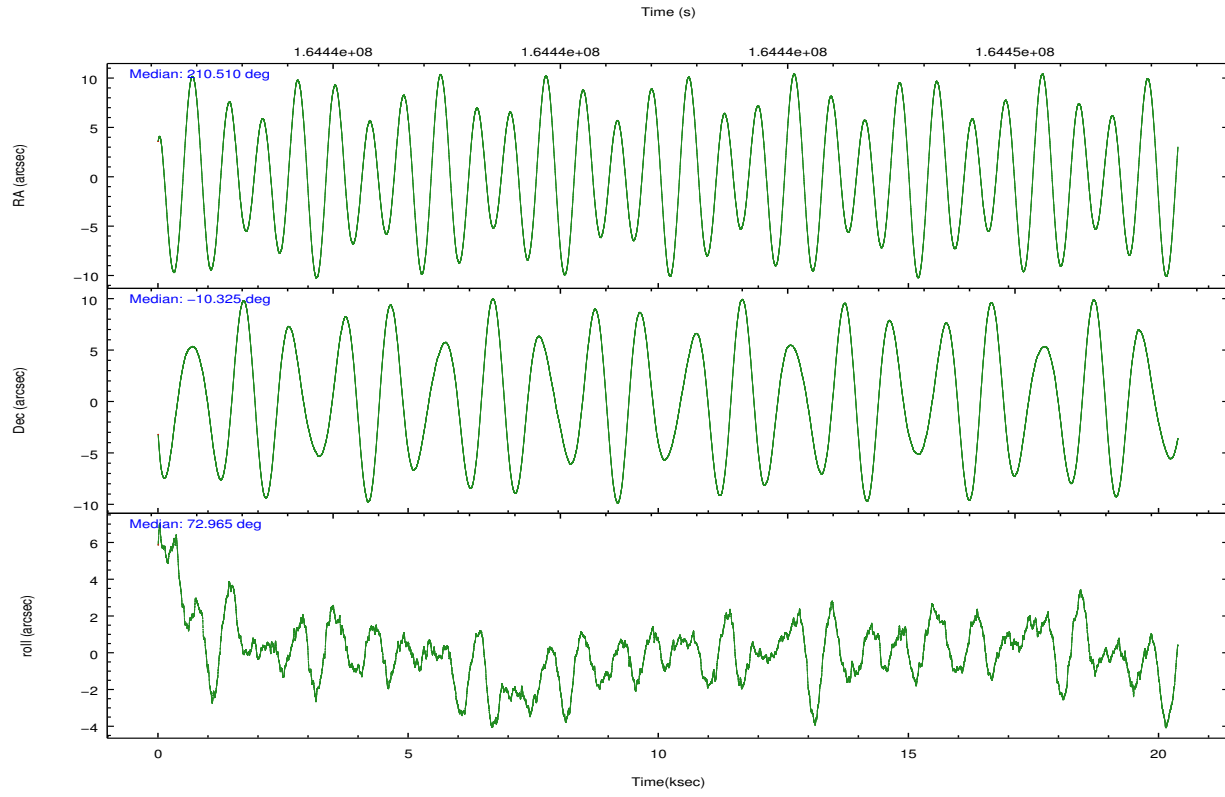
	ccd 0	ccd 1	ccd 2	ccd 3	ccd 6
grade 0 events	4187	4871	5466	3976	4785
	4%	4%	4%	3%	4%
grade 1 events	47	55	60	47	64
	0%	0%	0%	0%	0%
grade 2 events	2466	2622	2562	2189	2382
	2%	2%	2%	2%	2%
grade 3 events	1298	1403	1176	1210	1288
	1%	1%	1%	1%	1%
grade 4 events	1154	1325	1259	1191	1239
	1%	1%	1%	1%	1%
grade 5 events	3756	4025	3431	4061	4000
	3%	3%	2%	3%	3%
grade 6 events	2116	2382	1957	1946	2274
	2%	2%	1%	1%	2%
grade 7 events	84283	84103	98712	92293	92290
	84%	83%	86%	86%	85%

2.2 Compared Parameters

Parameter	Planned	Actual	Parameter	Planned	Actual
Instrument	ACIS	ACIS	Obspar format version number	7	7
Detector	ACIS-01236	ACIS-01236	Obspar file type	PREDICTED	ACTUAL
Grating	NONE	NONE	Obspar update status	NONE	UPDATED
Data mode	VFAINT	VFAINT	Number of optional ACIS chips dropped	0	0
Observation mode	POINTING	POINTING	On-chip summing requested	N	N
[deg] Pointing RA	210.516469	210.5100779958819	Subarray requested	NONE	NONE
[deg] Pointing Dec	-10.351992	-10.32537228652891	Alternating exposures requested	N	N
[deg] Pointing Roll	72.764288	72.9718302200441	[s] Primary exposure time	0.000000	3.1
[mm] SIM focus pos	-0.782348	-0.7809083437167272			
[mm] SIM defocus	0	0.001439871863259334			
[mm] SIM translation stage pos	-233.592463	-233.5874344608287			
[mm] SIM translation stage offset	0	-0.005018542100998502			
[s] Observation start time (MET)	164432371.184000	164431476.24702			
Observation start date	2003-03-19T03:38:27	2003-03-19T03:24:36			
[s] Observation end time (MET)	164452563.184000	164453412.27295			
Observation end date	2003-03-19T09:14:59	2003-03-19T09:30:12			
Read mode	TIMED	TIMED			

2.3 Aspect



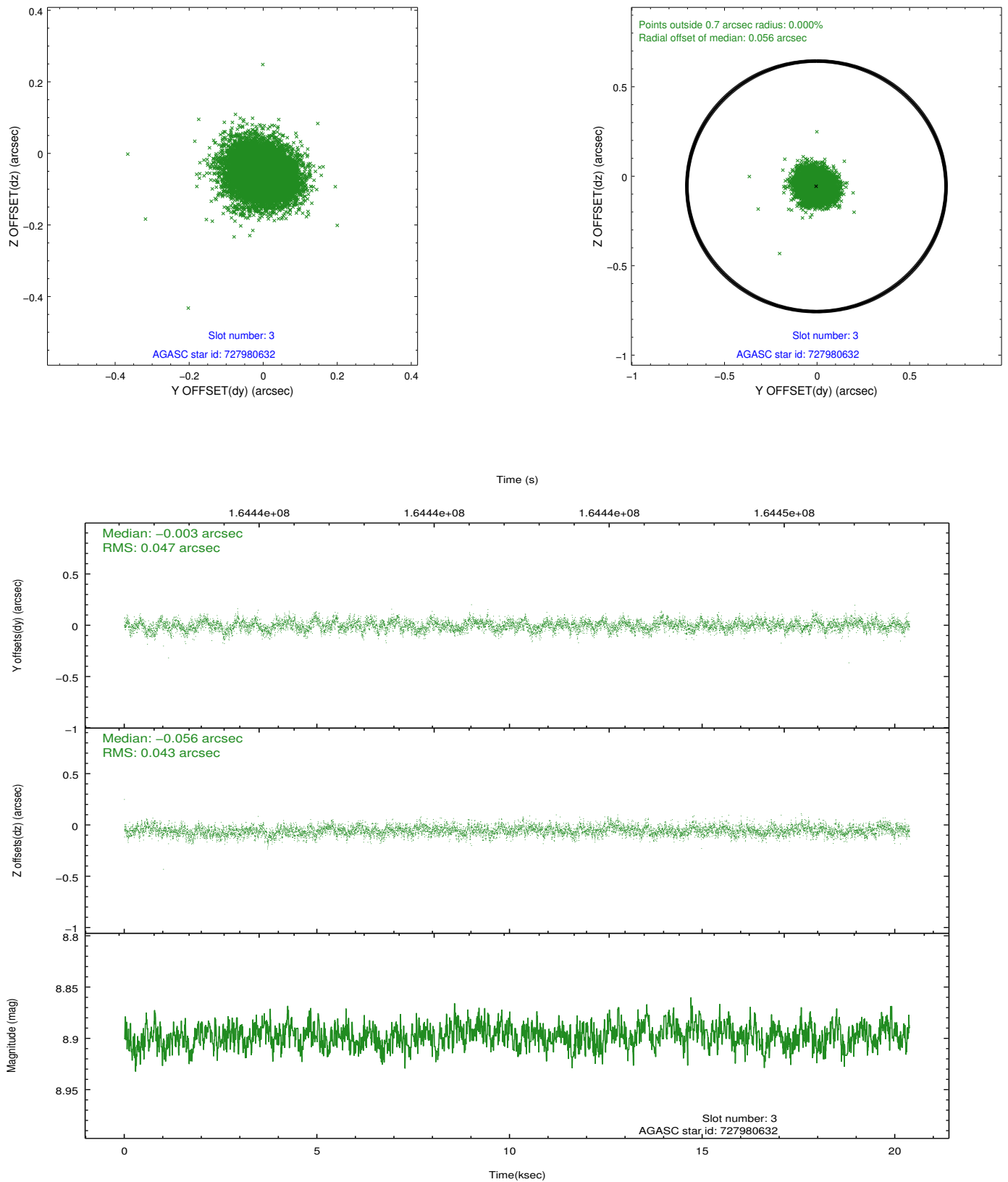


Slot Statistics

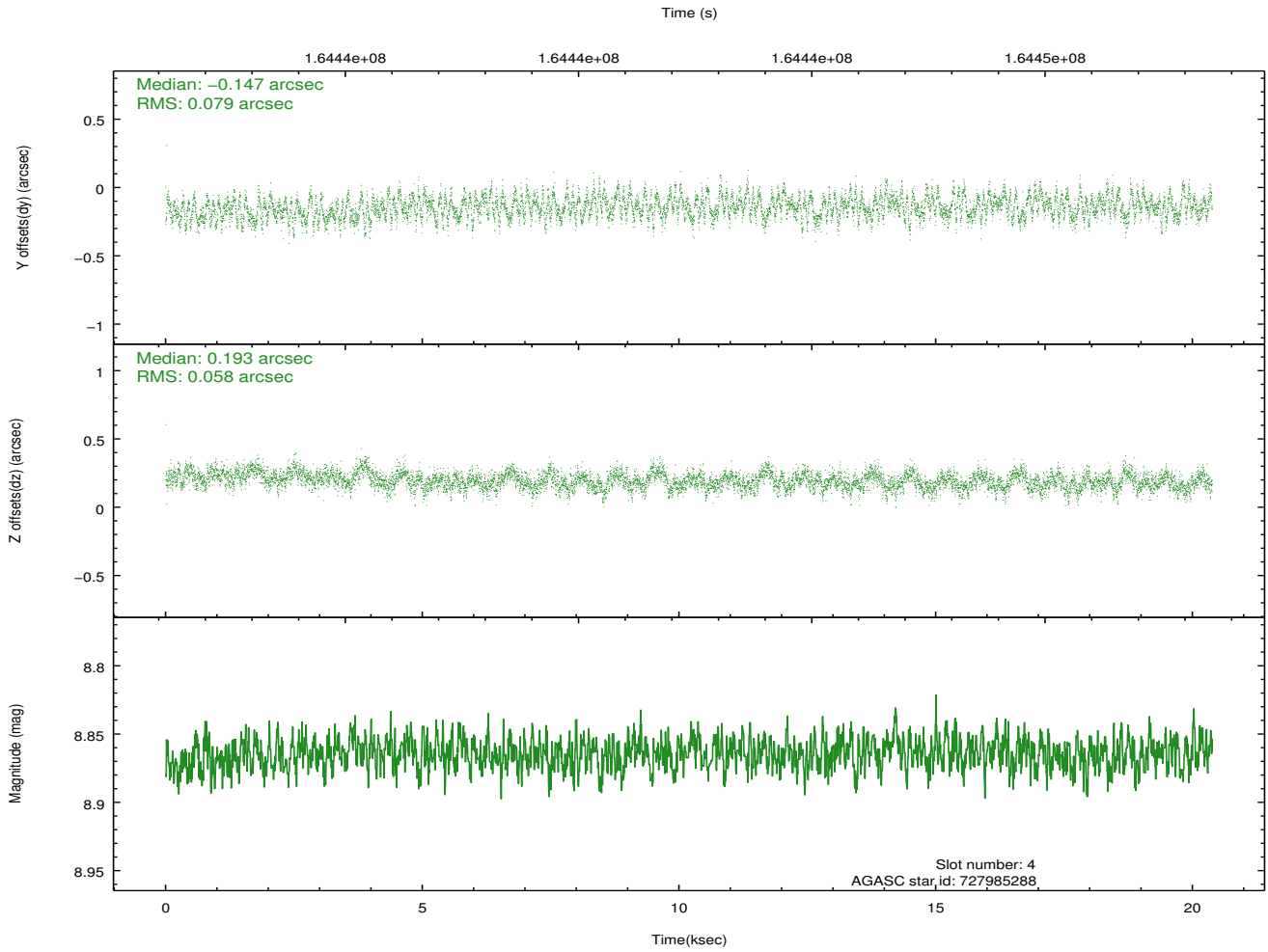
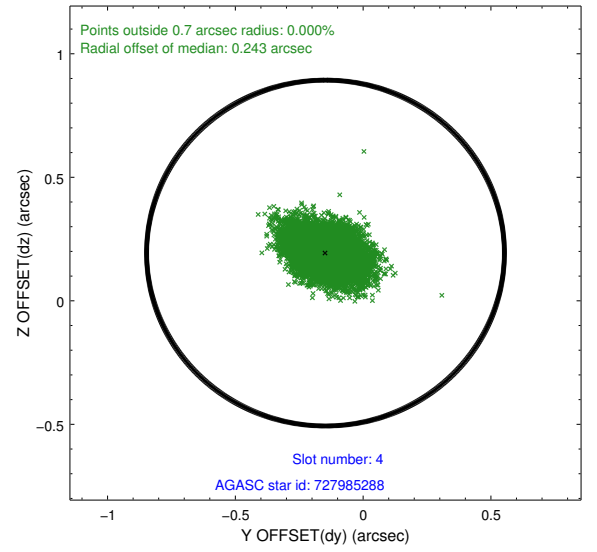
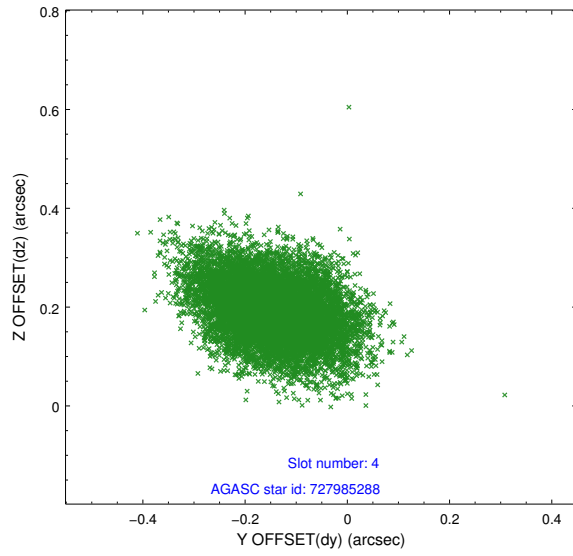
slot	status	id	mag	n_pts	med_dy	med_dz	dr1	dr2	ra	dec	mean_y	mean_z
0	FID	ACIS-I-1	7.25	4972	0.020	0.003	0.009	0.022	0.000000	0.000000	937.04	-830.62
1	FID	ACIS-I-5	7.24	4972	-0.089	0.060	0.008	0.016	0.000000	0.000000	-1811.04	1066.88
2	FID	ACIS-I-6	7.26	4971	-0.022	0.007	0.010	0.021	0.000000	0.000000	402.39	1711.49
3	GUIDE	727980632	8.90	9940	-0.003	-0.056	0.067	0.110	210.409636	-9.940109	1304.03	801.30
4	GUIDE	727985288	8.86	9944	-0.147	0.193	0.103	0.172	211.312862	-9.933967	2271.29	-2251.86
5	GUIDE	728371016	8.63	9944	0.015	0.020	0.065	0.107	210.163866	-10.528337	-976.45	1003.52
6	GUIDE	728372120	7.93	9937	0.033	0.024	0.074	0.121	210.863188	-10.967306	-1752.86	-1827.03
7	GUIDE	728378176	9.73	9933	0.105	-0.186	0.113	0.185	209.946087	-10.437775	-895.40	1835.92

2.4 Star Slots

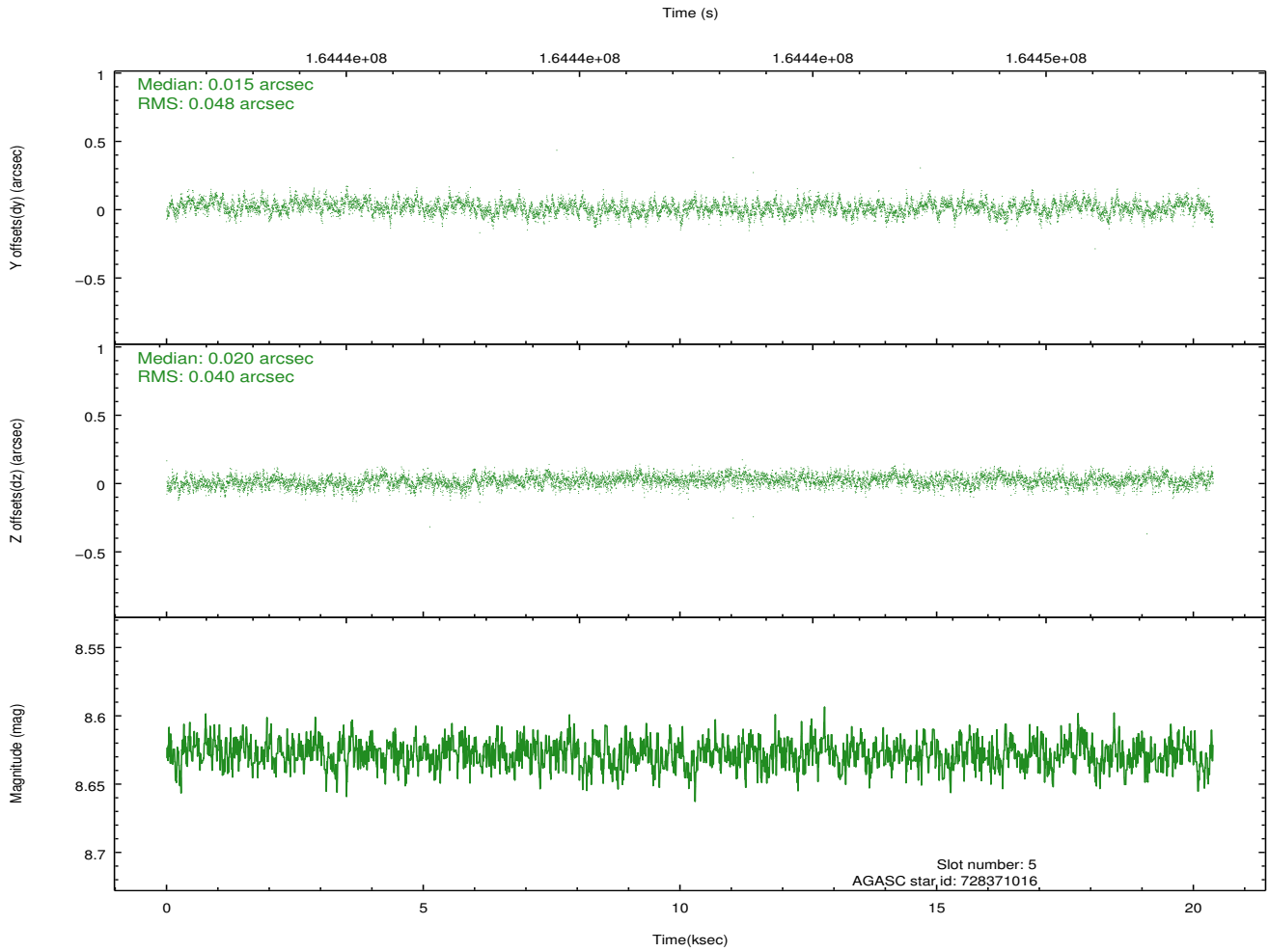
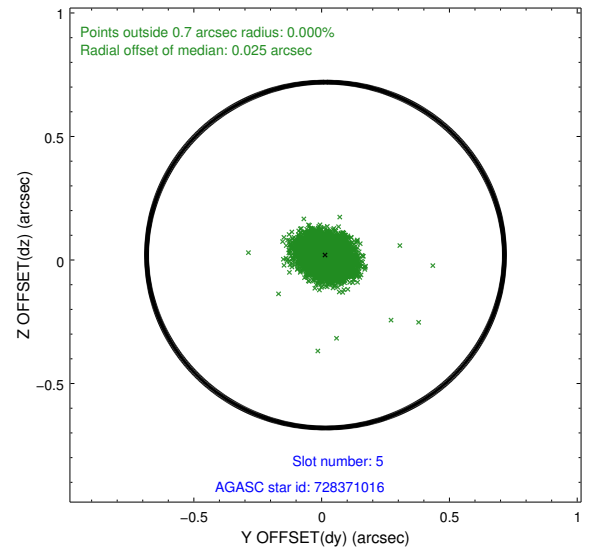
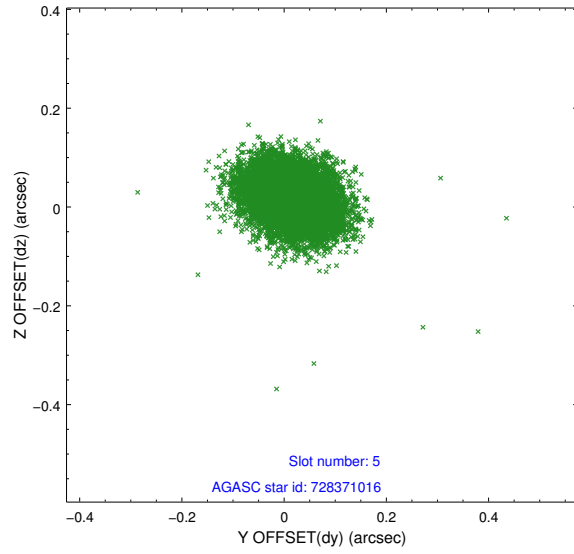
2.4.1 Slot 3



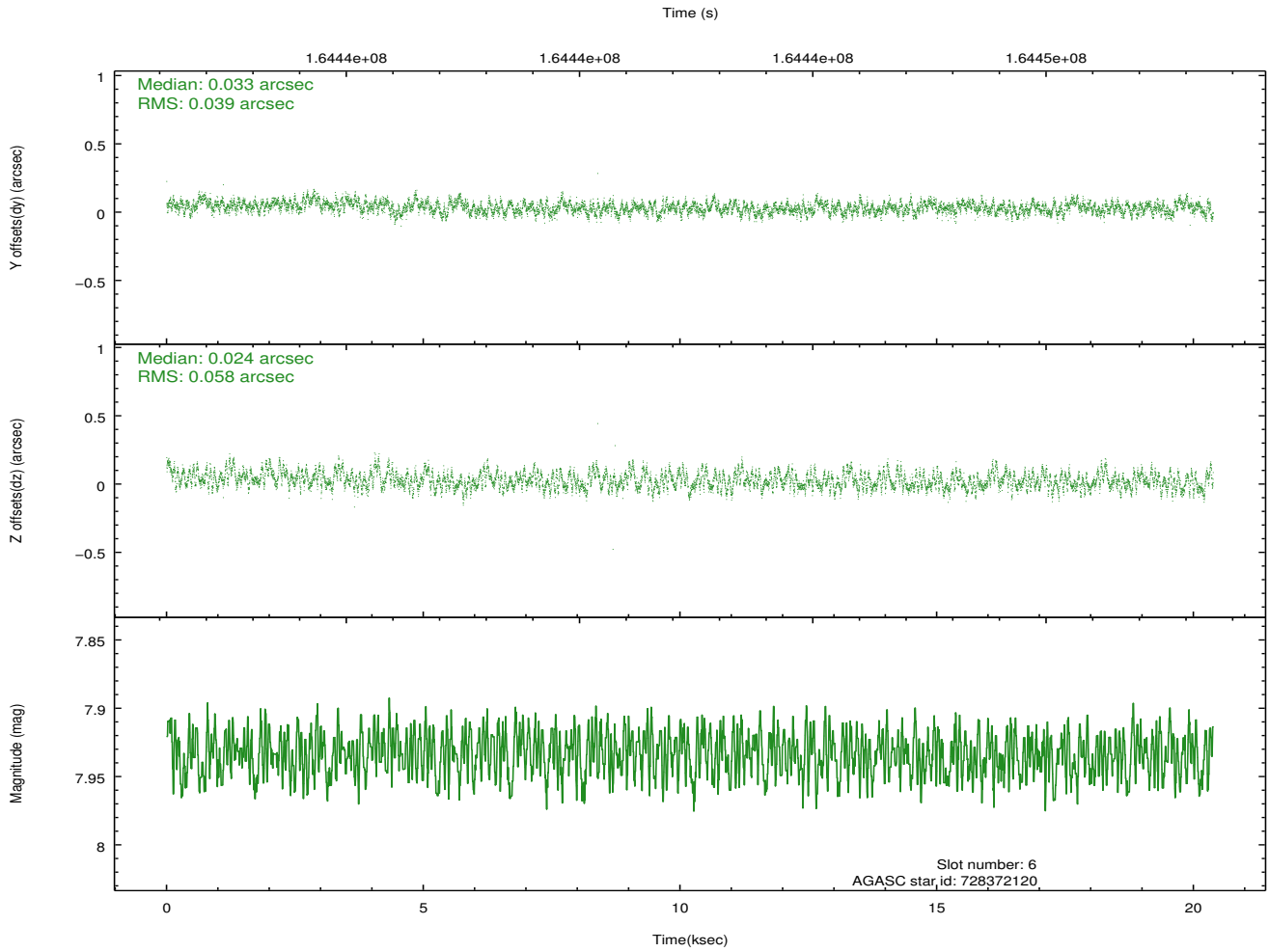
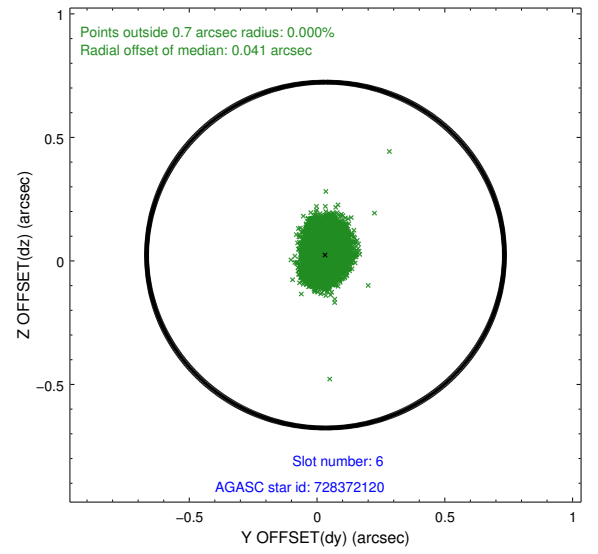
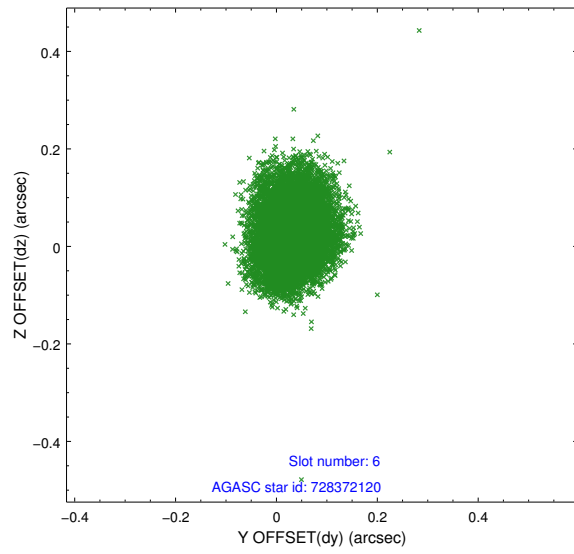
2.4.2 Slot 4



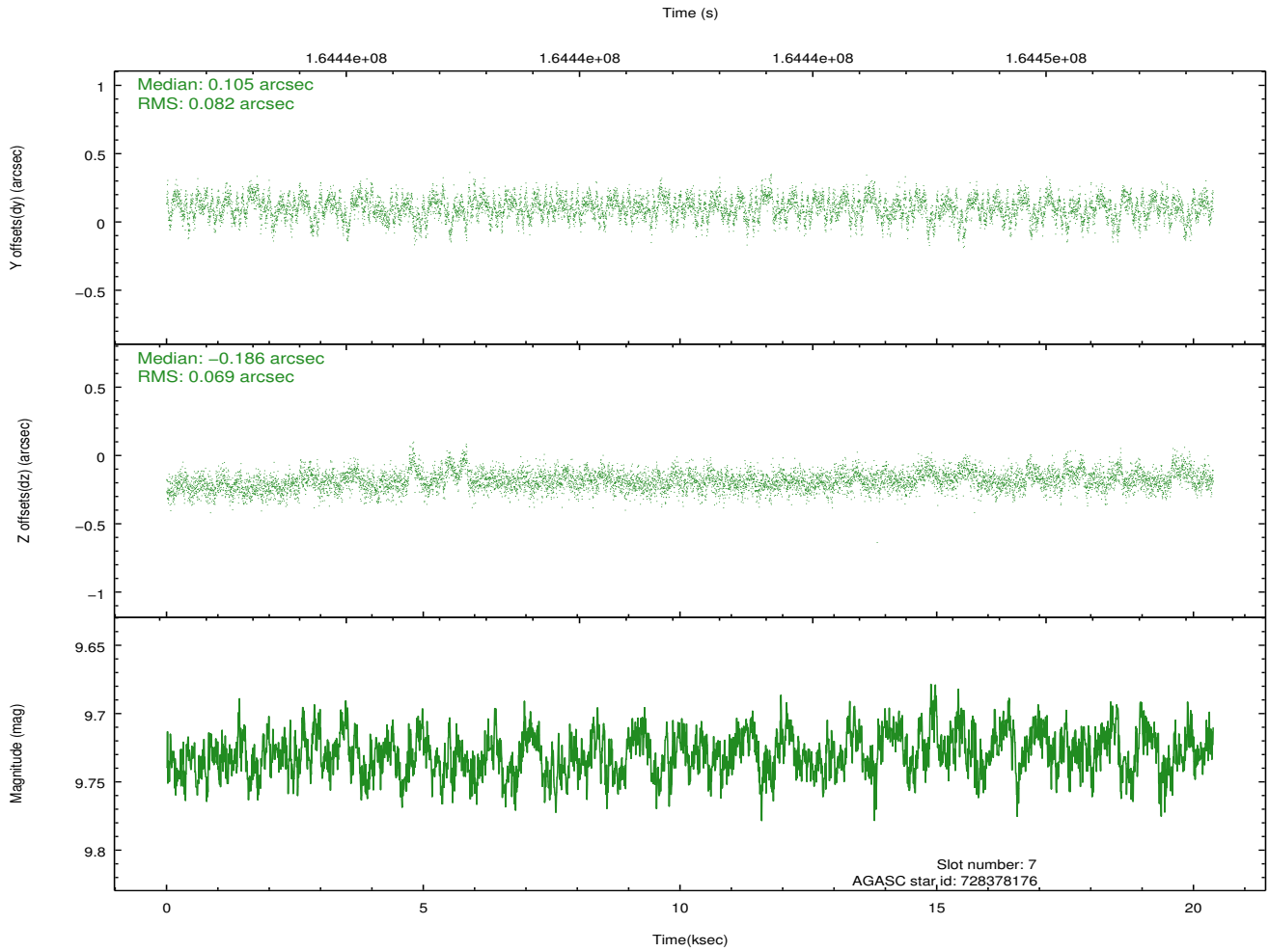
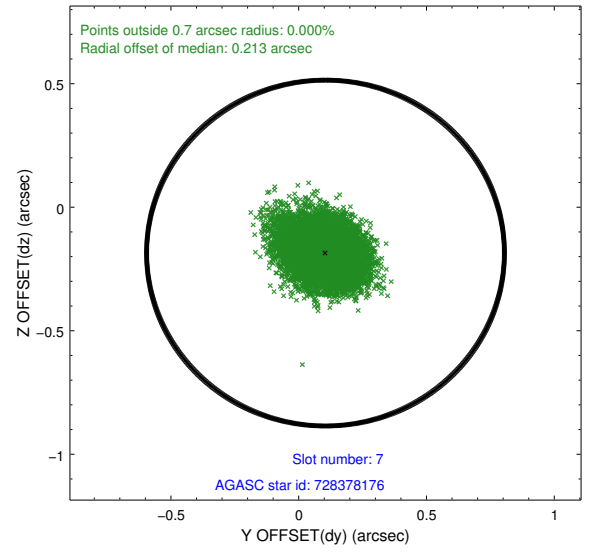
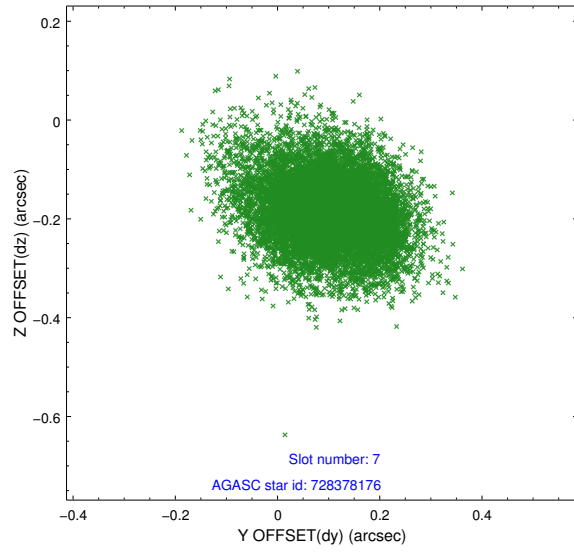
2.4.3 Slot 5



2.4.4 Slot 6

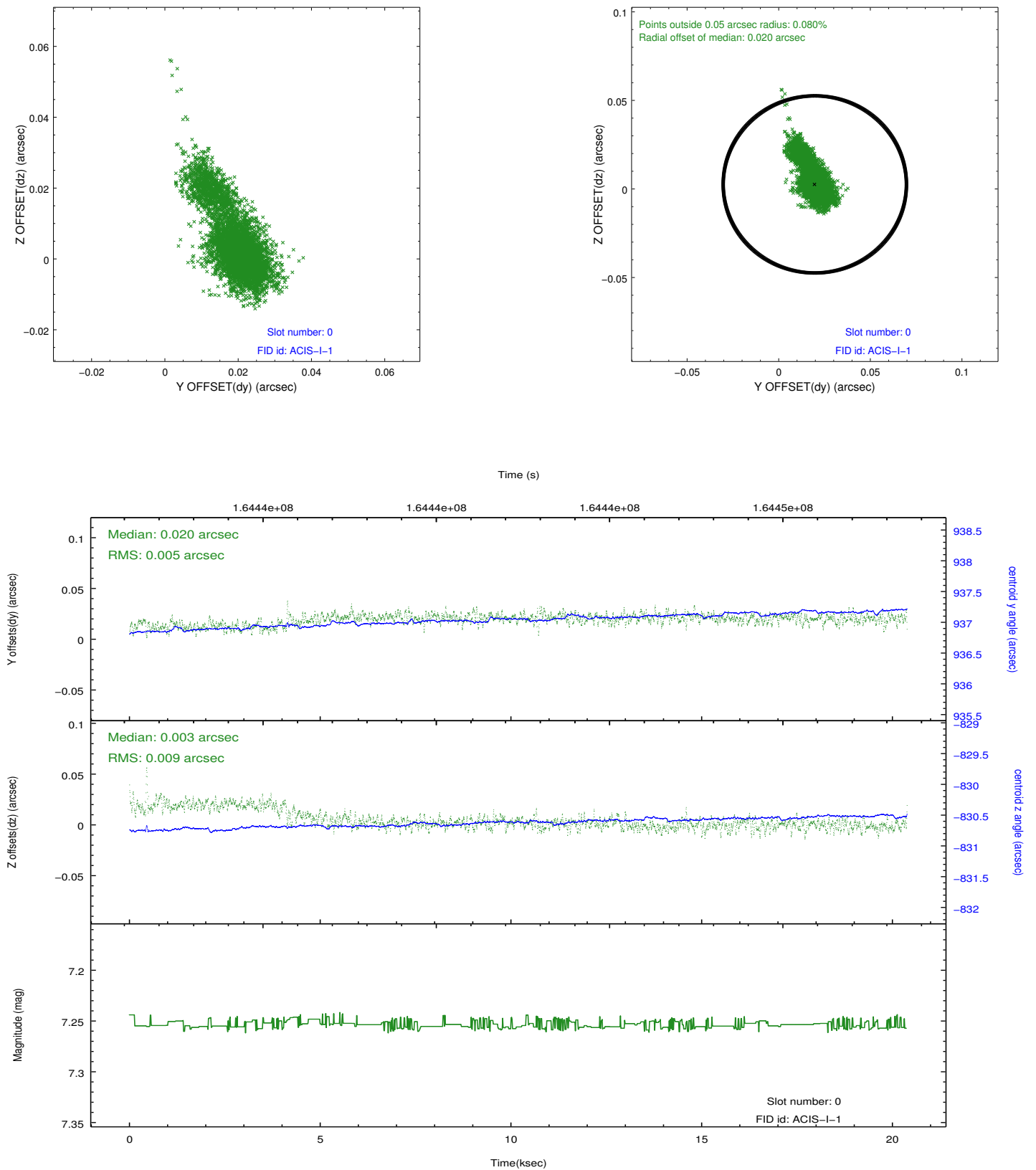


2.4.5 Slot 7

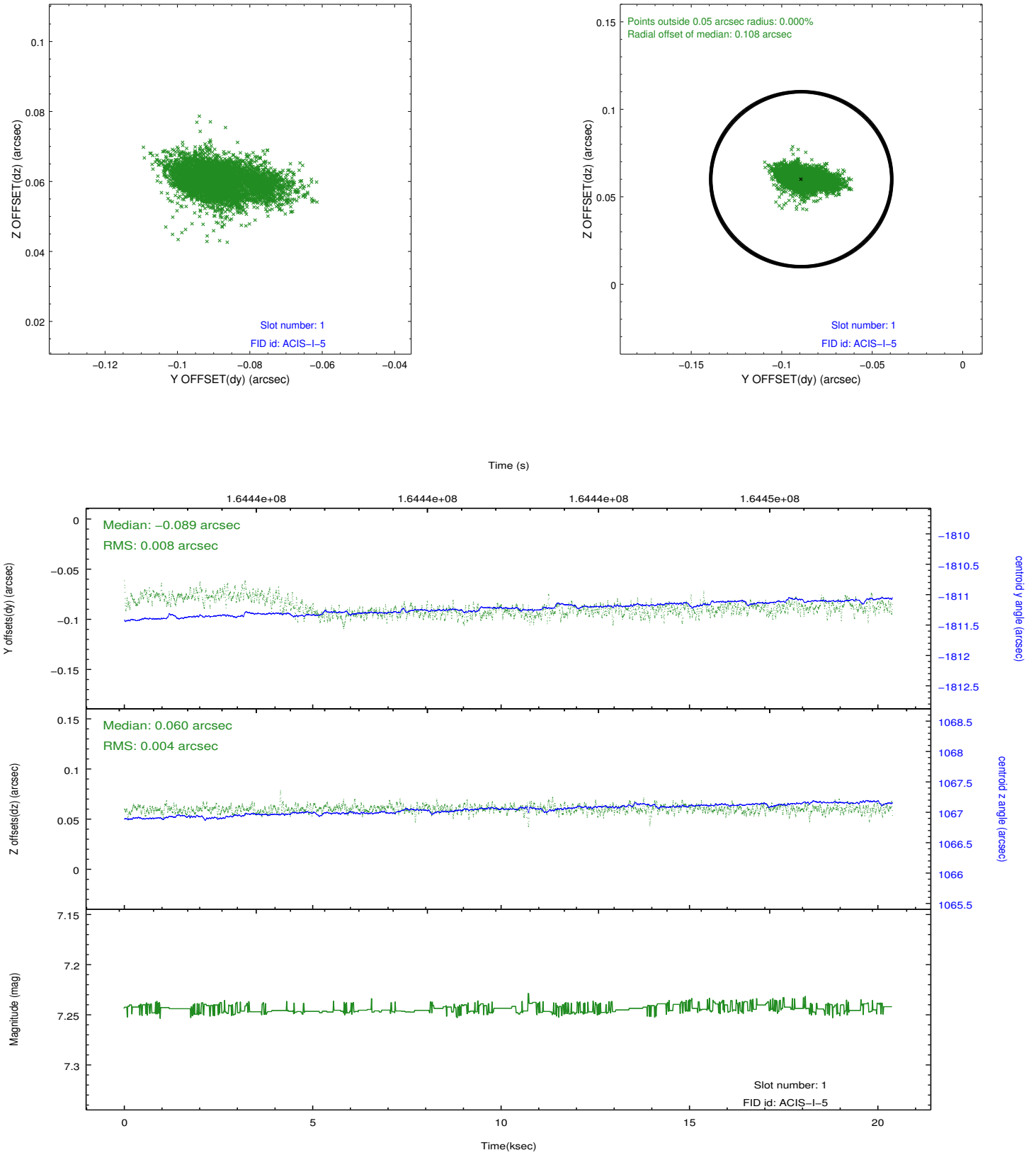


2.5 FID Slots

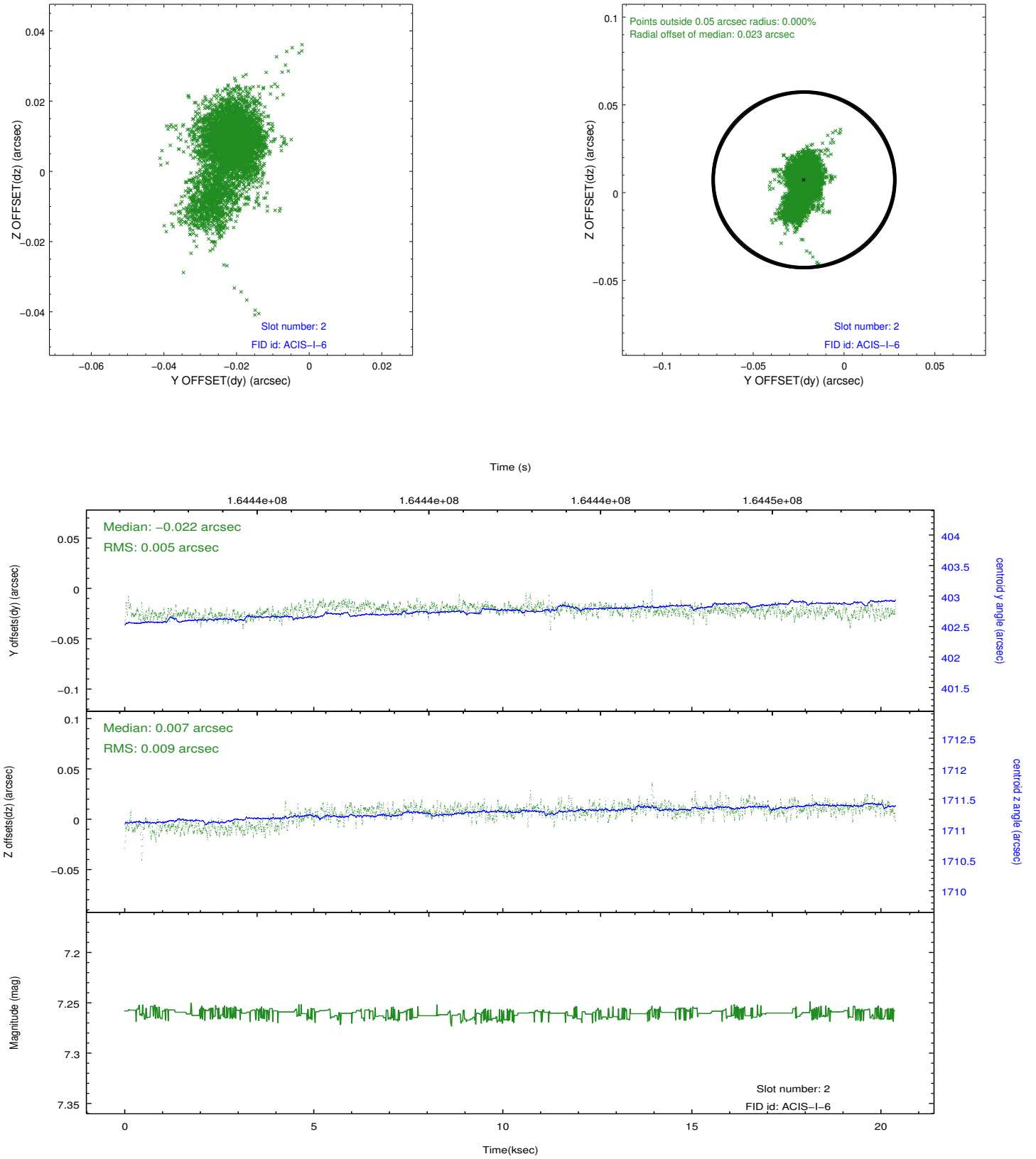
2.5.1 Slot 0



2.5.2 Slot 1



2.5.3 Slot 2



A Summary

A.1 Status

V&V Scientist	Jen Lauer
V&V Date (YYYY-MM-DD)	2012.11.09
V&V Edition	1
V&V Disposition and Status	OK
V&V Charge Time	19.967

A.2 Comments