

V&V Reference Report

L2 ASCDS Version : 7.6.8

Observation 3823 - L2 Version 001
Chandra X-Ray Center

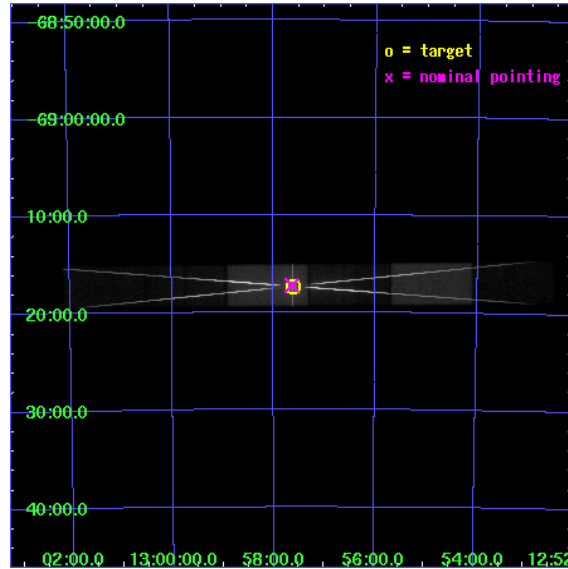
L2 Processing Date : Jul 1 2006

Contents

1	Front	2
2	OBI	3
2.1	OBI	3
2.1.1	Images	3
2.1.2	Bias	3
2.1.3	Parameters	4
2.1.4	Events	4
2.2	Compared Parameters	5
2.3	Aspect	6
2.4	Star Slots	9
2.4.1	Slot 3	9
2.4.2	Slot 4	10
2.4.3	Slot 5	11
2.4.4	Slot 6	12
2.4.5	Slot 7	13
2.5	FID Slots	14
2.5.1	Slot 0	14
2.5.2	Slot 1	15
2.5.3	Slot 2	16
3	Gratings	17
3.1	HEG Arm	17
3.2	MEG Arm	19
A	Summary	21
A.1	Status	21
A.2	Comments	21

1 Front

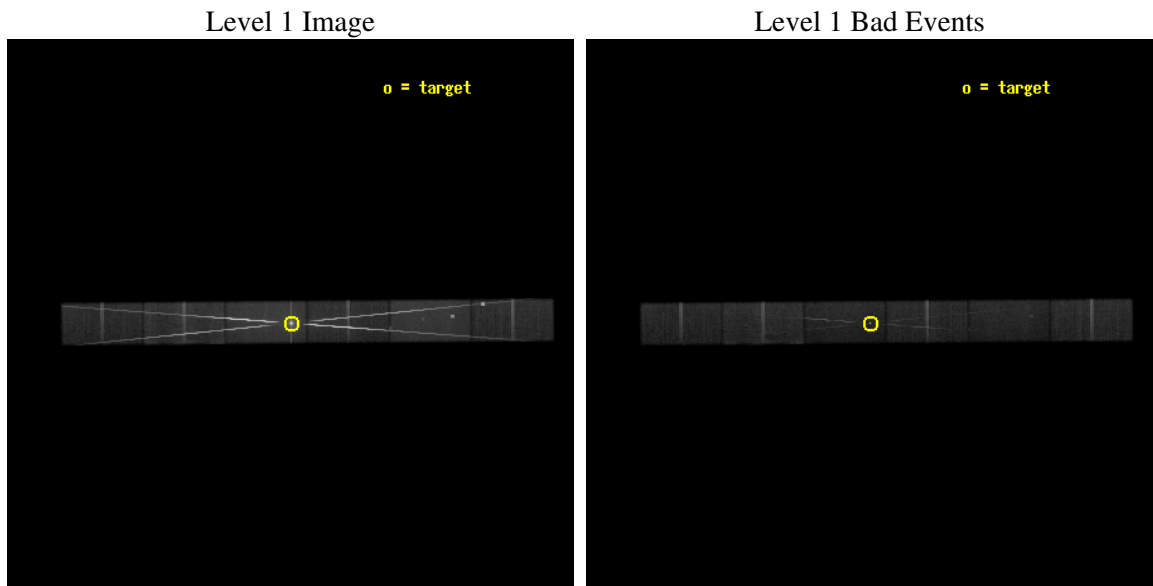
seq_num	400310
obs_id	3823
title	EXPLORING ACCRETION DISKS: THE LINE-RICH SPECTRA OF X-RAY BINARY DIPPERS
observer	Dr. Mario Jimenez-Garate
object	4U1254-690
dtcycle	0
cycle	P
ra_targ	194.405
dec_targ	-69.289167
ra_nom	194.40943650461
dec_nom	-69.28751671815
roll_nom	179.47430507283
revision	2
ontime	52934.599628806
livetime	51686.819009885
ontime4	52934.599628806
ontime5	52934.599628806
ontime6	52934.599628806
ontime7	52934.599628806
ontime8	52934.599628806
ontime9	52934.599628806
l2events	1400861



2 OBI

2.1 OBI

2.1.1 Images

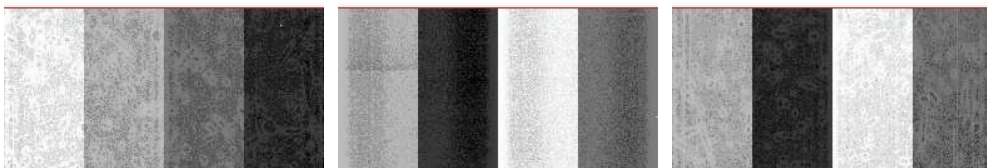


2.1.2 Bias

Chip 4

Chip 5

Chip 6



Chip 7

Chip 8

Chip 9



2.1.3 Parameters

obi_num	0
ascdsver	7.6.8
caldsver	3.2.2
date	2006-07-01T21:58:21
revision	2

sched_exp_time	52716.000000
ontime	52937.414456159
ontime4	52937.414456159
ontime5	52937.414456159
ontime6	52937.414456159
ontime7	52937.414456159
ontime8	52937.414456159
ontime9	52937.414456159
l1events	2495181

2.1.4 Events

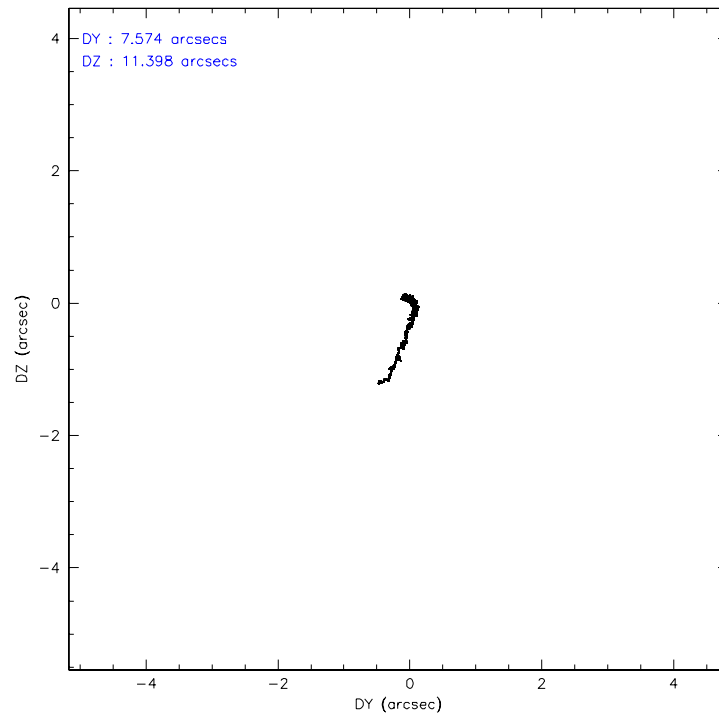
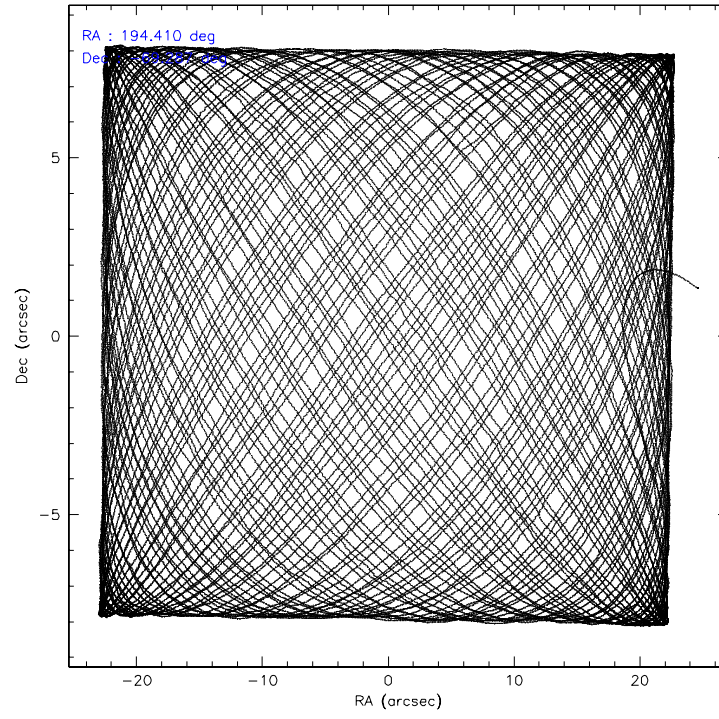
	ccd 4	ccd 5	ccd 6	ccd 7	ccd 8	ccd 9
level 1 events	233693	358769	607440	698213	391951	205115
rejected events	177226	142521	168454	154399	184612	153260
rejected %	75%	39%	27%	22%	47%	74%

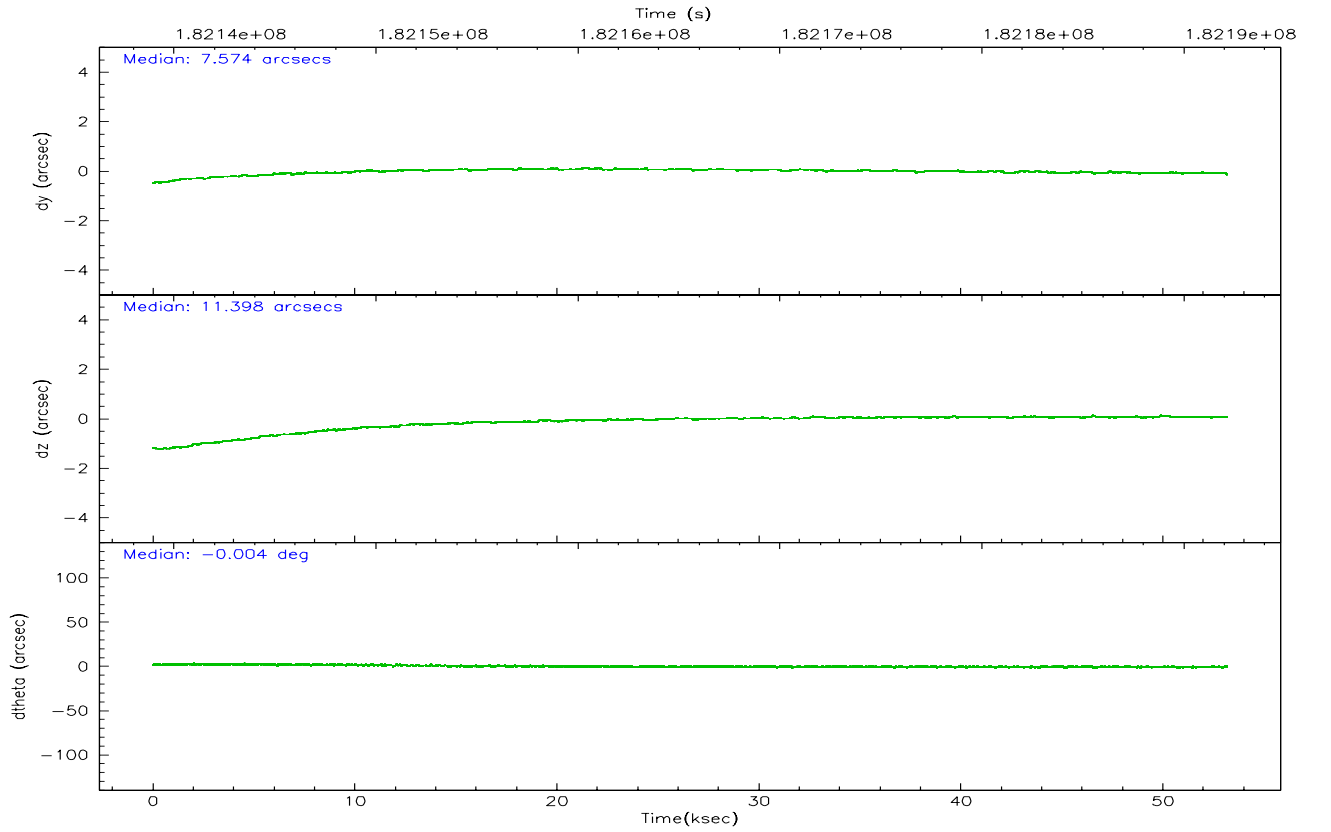
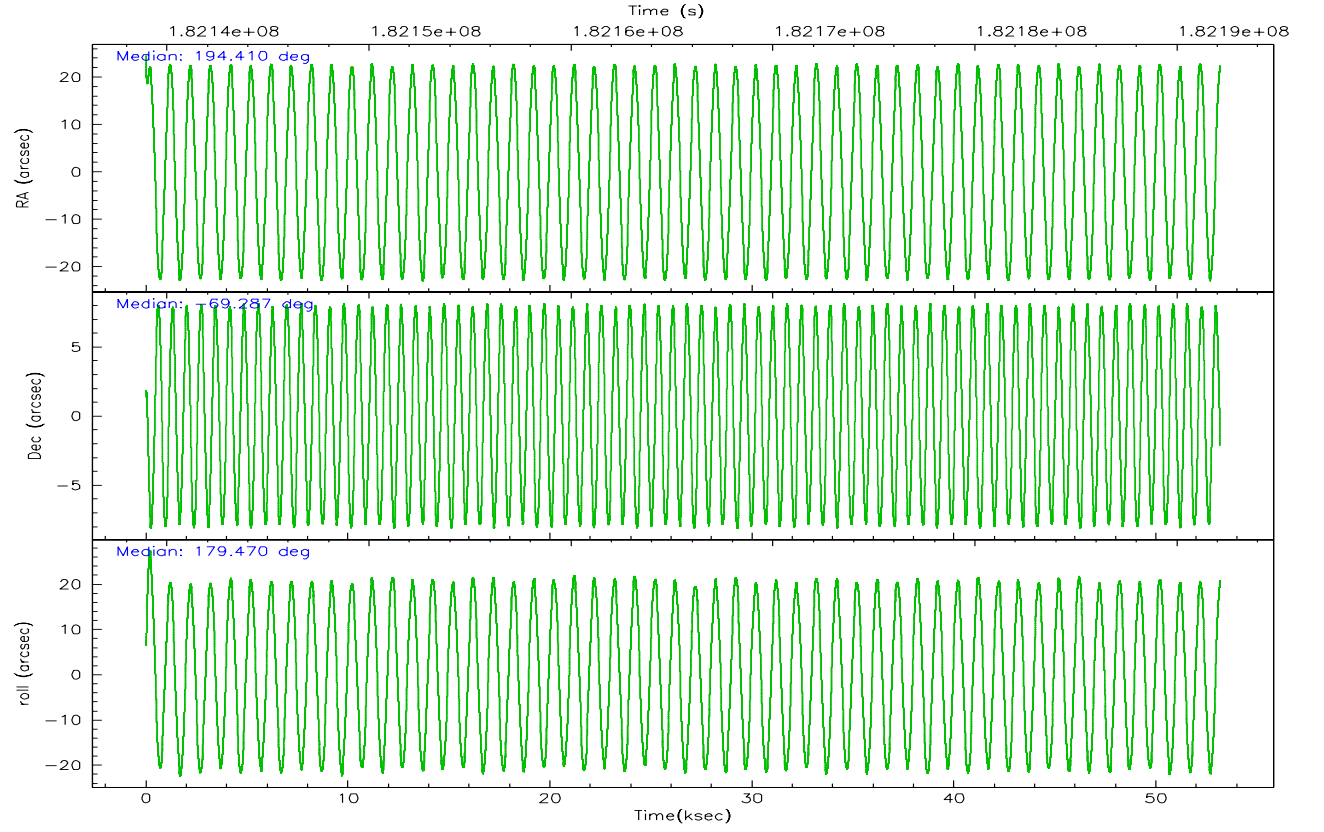
	ccd 4	ccd 5	ccd 6	ccd 7	ccd 8	ccd 9
grade 0 events	40116	46110	325440	95552	146091	33301
	17%	12%	53%	13%	37%	16%
grade 1 events	244	783	2246	1344	604	140
	0%	0%	0%	0%	0%	0%
grade 2 events	6416	66033	54183	142087	25558	6947
	2%	18%	8%	20%	6%	3%
grade 3 events	3129	12408	19310	52856	10271	3569
	1%	3%	3%	7%	2%	1%
grade 4 events	2948	12075	18920	52603	9964	3372
	1%	3%	3%	7%	2%	1%
grade 5 events	7020	14606	9420	24407	9966	7955
	3%	4%	1%	3%	2%	3%
grade 6 events	3862	79637	21154	200758	15461	4669
	1%	22%	3%	28%	3%	2%
grade 7 events	169958	127117	156767	128606	174036	145162
	72%	35%	25%	18%	44%	70%

2.2 Compared Parameters

Parameter	Planned	Actual	Parameter	Planned	Actual
Instrument	ACIS	ACIS	Obspar format version number	6	6
Detector	ACIS-456789	ACIS-456789	Obspar file type	PREDICTED	ACTUAL
Grating	HETG	HETG	Obspar update status	NONE	UPDATED
Data mode	FAINT	FAINT	On-chip summing requested	N	N
Observation mode	POINTING	POINTING	Subarray requested	CUSTOM	1/2
Pointing RA	194.475833	194.4094365046107	Subarray start row	1	1
Pointing Dec	-69.273790	-69.28751671814997	Subarray row count	512	512
Pointing Roll	179.379780	179.4743050728307	Alternating exposures requested	N	N
SIM focus pos (mm)	-0.684267	-0.6828225247311905	Primary exposure time	0.000000	1.7
SIM defocus (mm)	0	0.001444936568705701			
SIM translation stage pos (mm)	-183.992523	-183.985022191653			
SIM translation stage offset (mm)	-6.14	-6.147500391354811			
Observation start time	182139425.184000	182138324.32534			
Observation start date	2003-10-10T02:16:01	2003-10-10T01:58:44			
Observation end time	182192141.184000	182193355.04021			
Observation end date	2003-10-10T16:54:37	2003-10-10T17:15:55			
Read mode	TIMED	TIMED			

2.3 Aspect



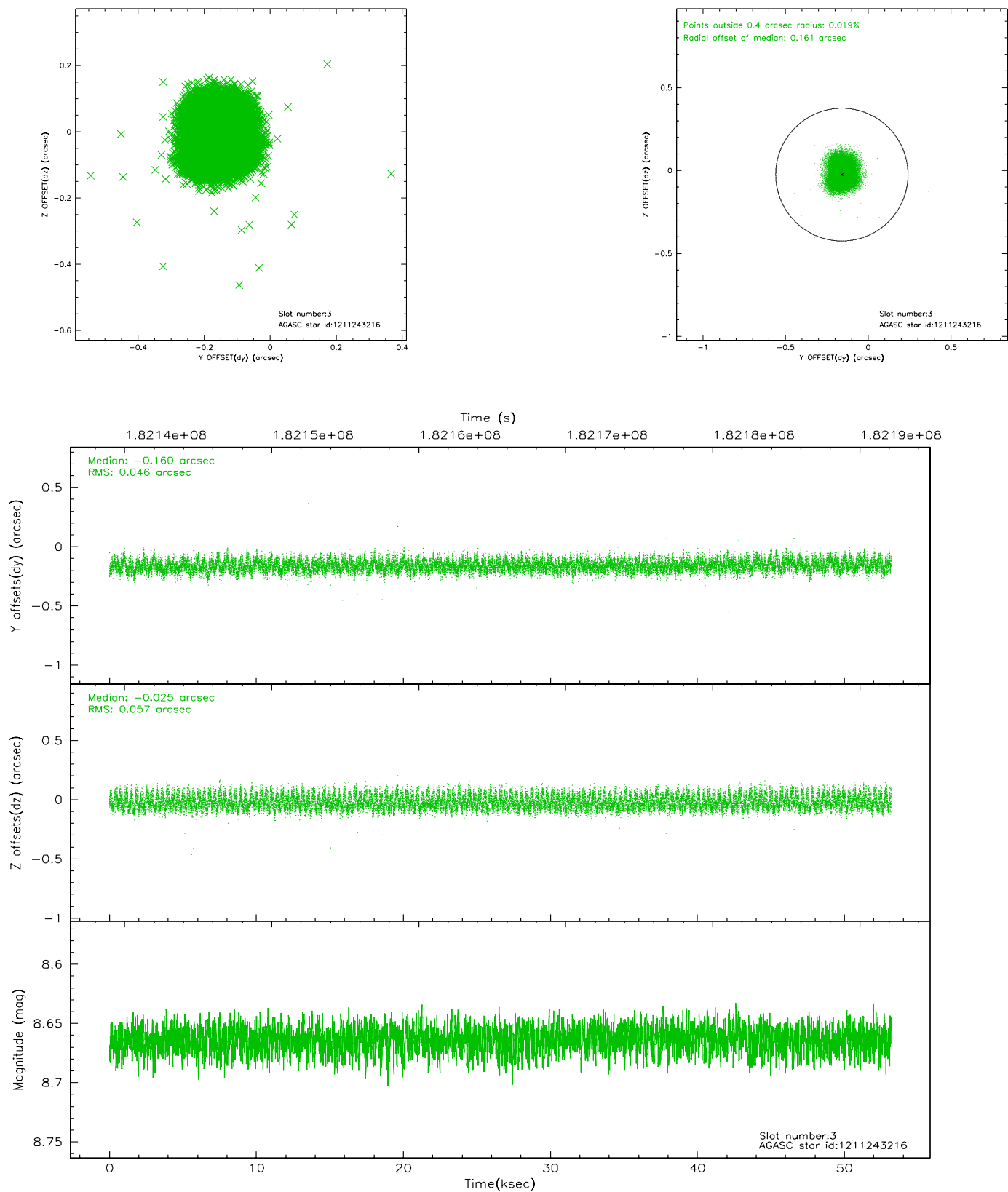


Slot Statistics

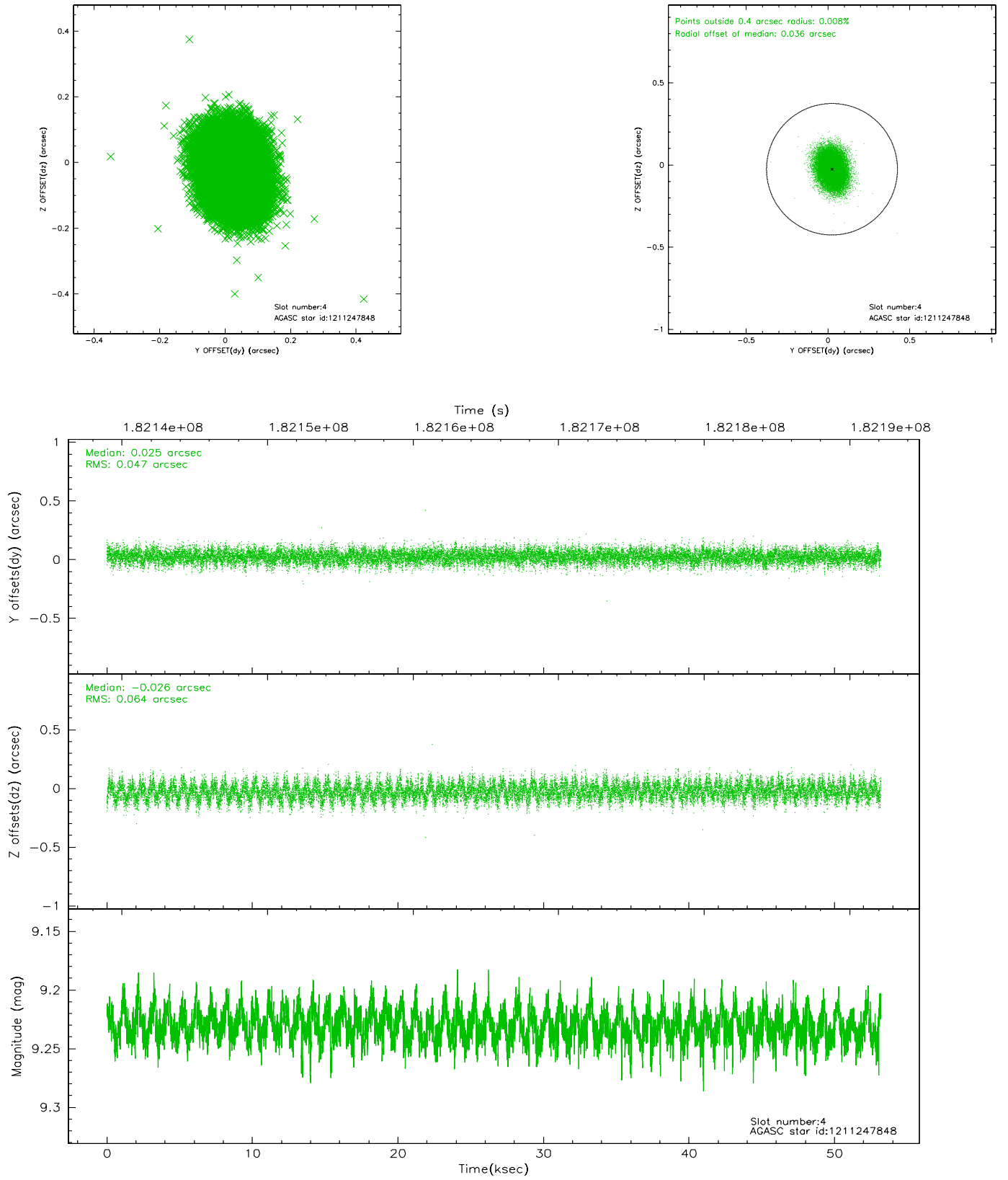
slot	status	id	mag	n_pts	med_dy	med_dz	dr1	dr2	ra	dec	mean_y	mean_z
0	FID	ACIS-S-4	7.17	12971	-0.002	0.035	0.006	0.010	0.000000	0.000000	2153.46	49.42
1	FID	ACIS-S-5	7.23	12972	-0.020	0.029	0.005	0.010	0.000000	0.000000	-1812.78	42.95
2	FID	ACIS-S-6	7.39	12970	-0.006	-0.049	0.008	0.013	0.000000	0.000000	401.76	686.58
3	GUIDE	1211243216	8.66	25933	-0.160	-0.025	0.079	0.123	195.774614	-68.795141	-1672.37	-1723.52
4	GUIDE	1211247848	9.23	25935	0.025	-0.026	0.084	0.138	193.594309	-68.773954	1168.62	-1778.52
5	GUIDE	1211763456	9.10	25934	-0.001	-0.007	0.083	0.134	195.983712	-69.842023	-1892.56	2048.25
6	GUIDE	1211246072	9.39	25930	0.127	0.066	0.112	0.177	192.624091	-69.050745	2391.64	-740.71
7	GUIDE	1211761720	7.57	25938	0.011	-0.009	0.055	0.089	192.799829	-69.645209	2083.82	1388.76

2.4 Star Slots

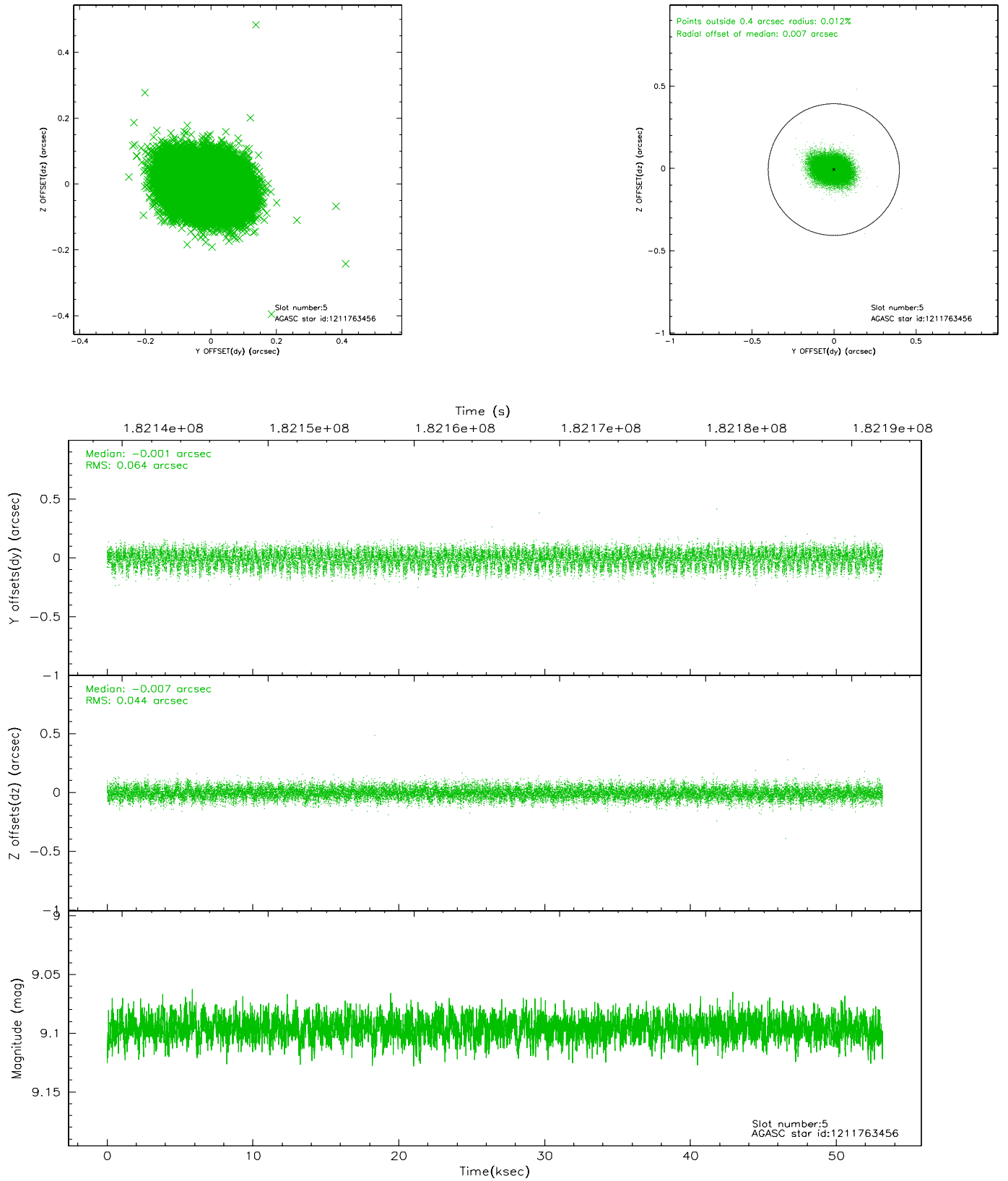
2.4.1 Slot 3



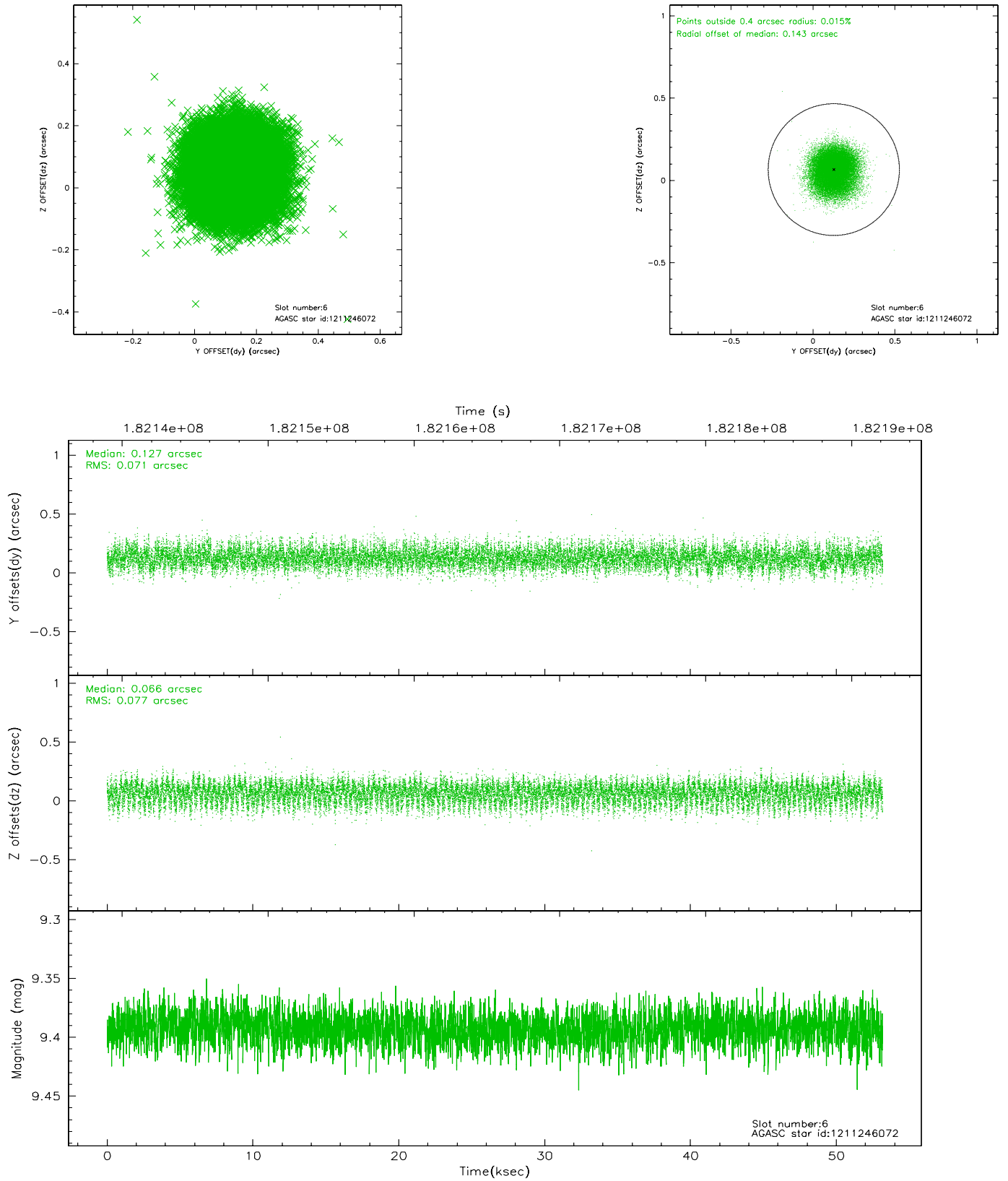
2.4.2 Slot 4



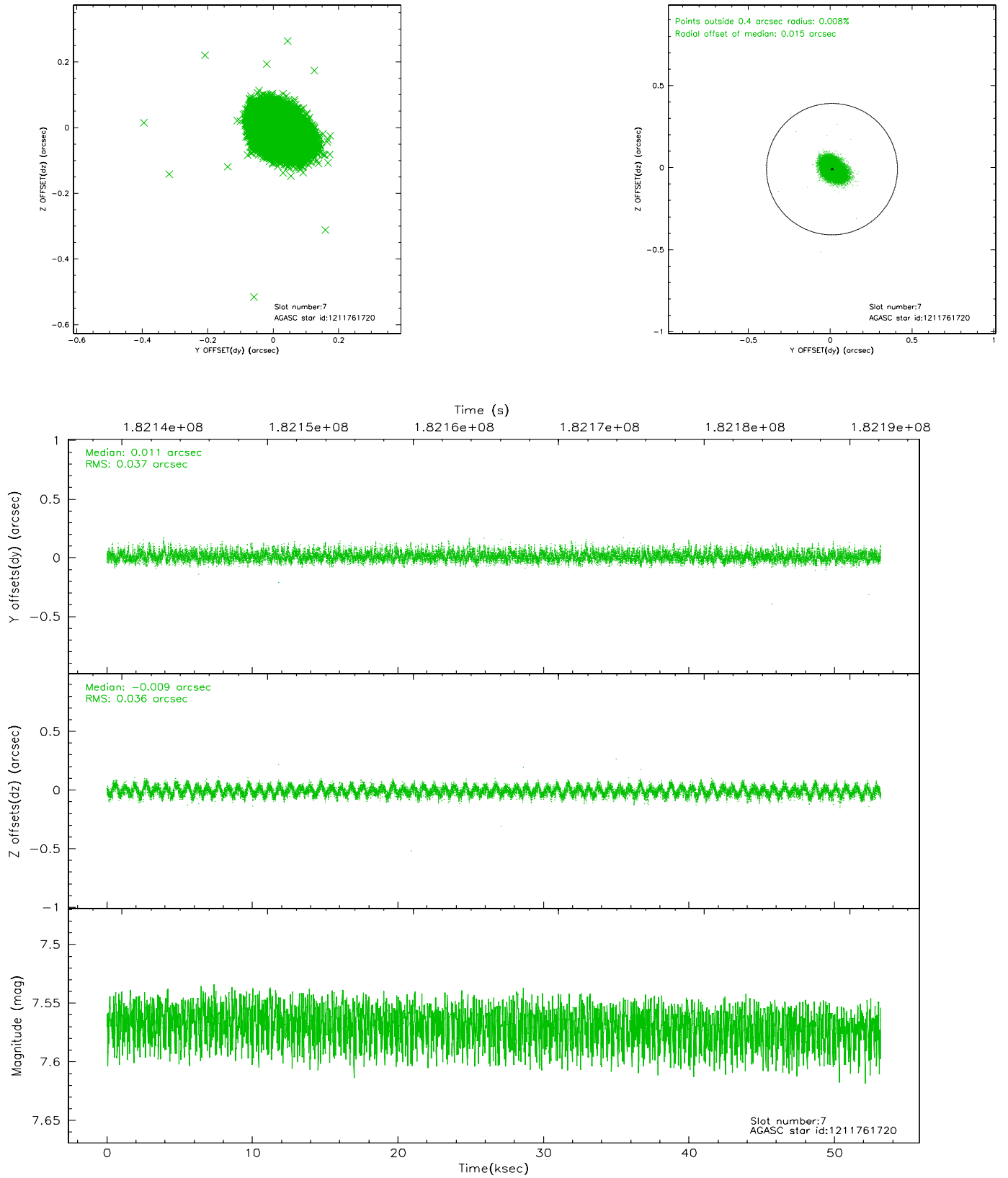
2.4.3 Slot 5



2.4.4 Slot 6

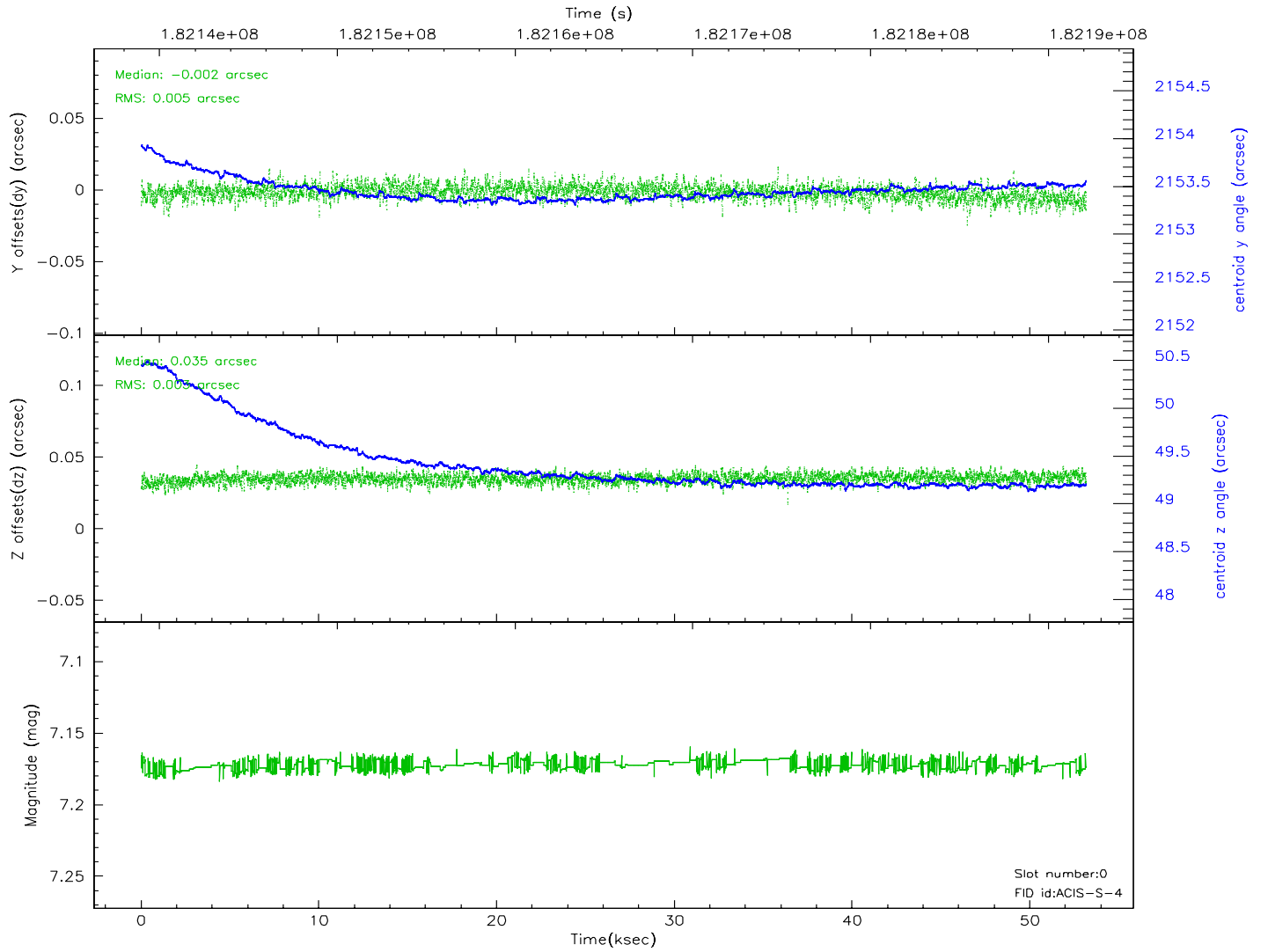
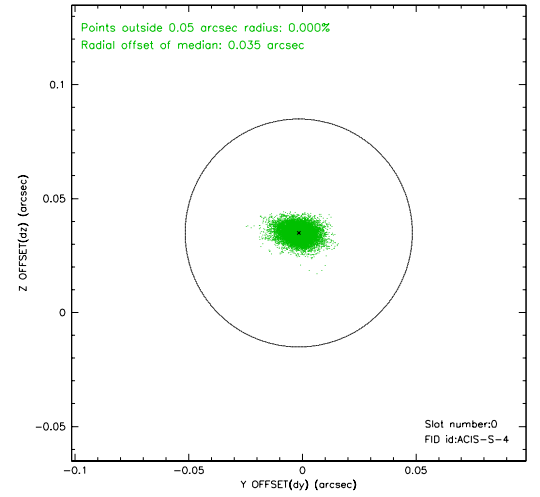
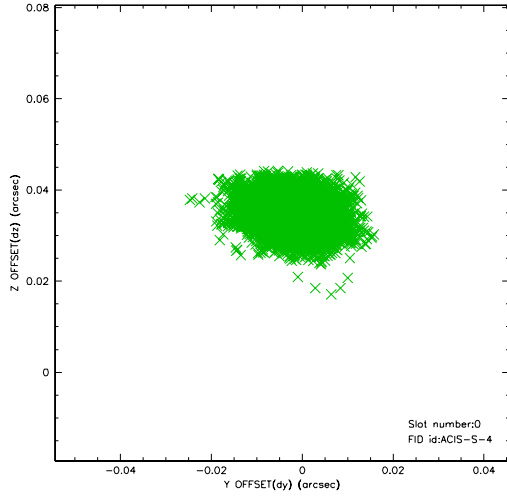


2.4.5 Slot 7

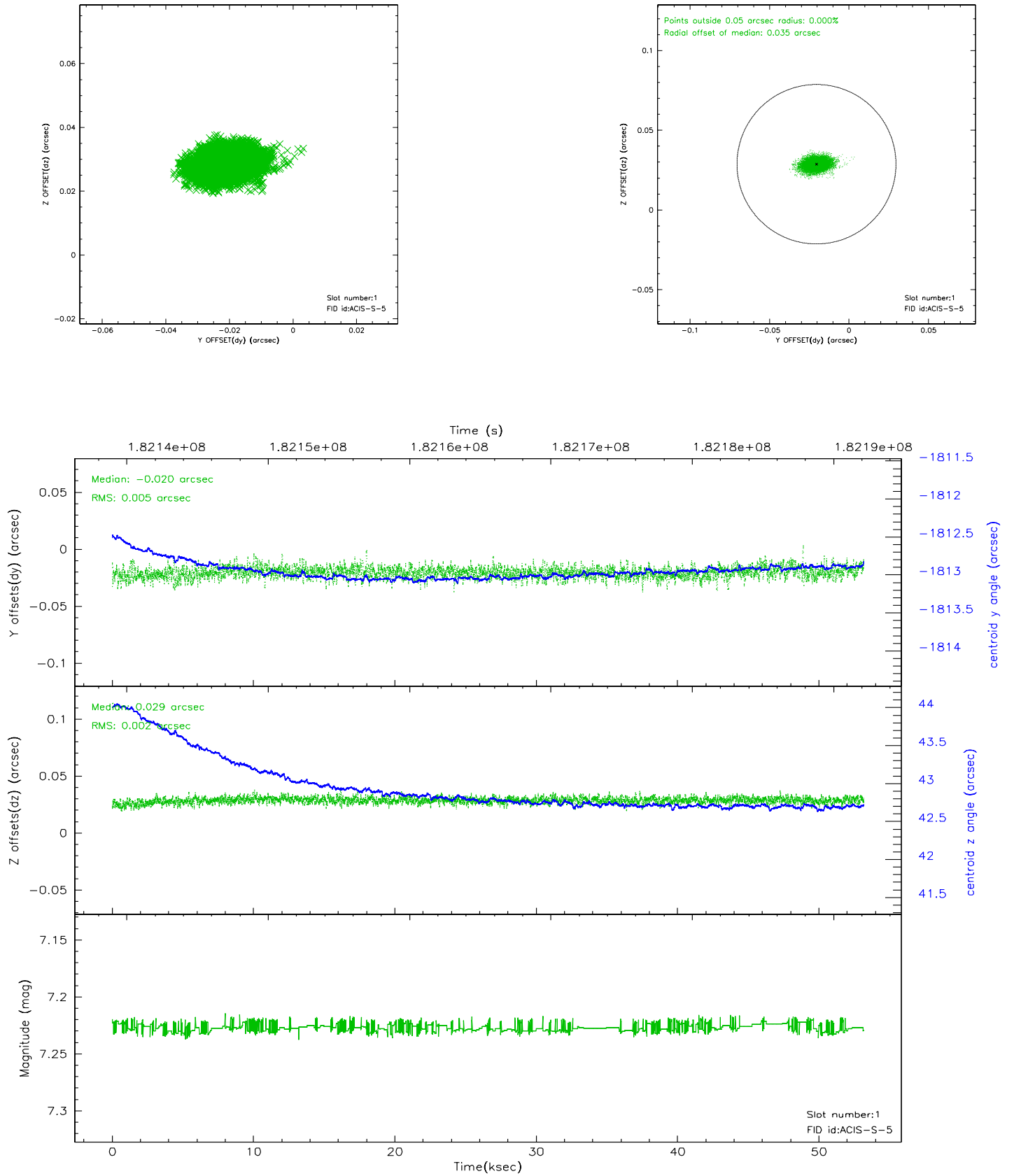


2.5 FID Slots

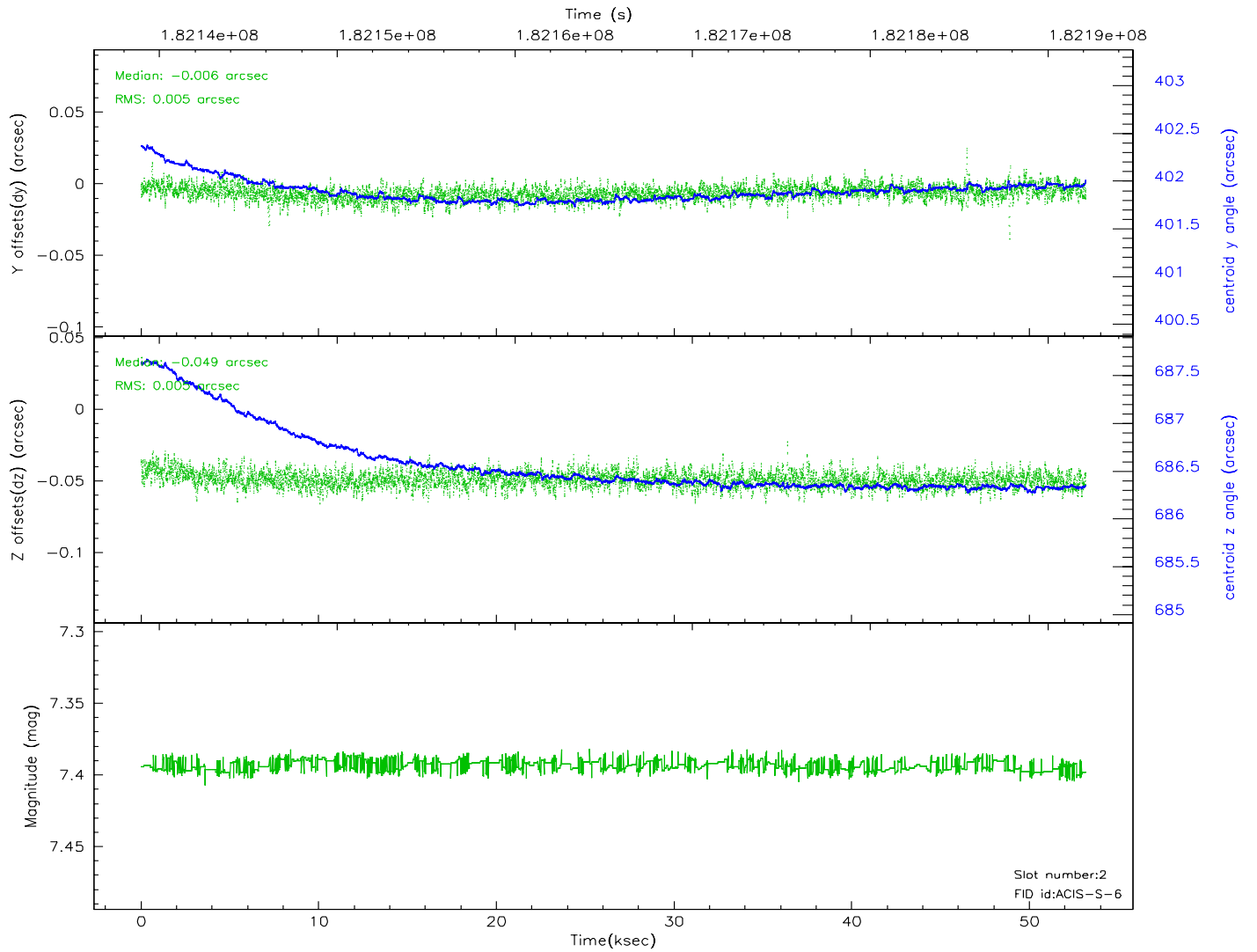
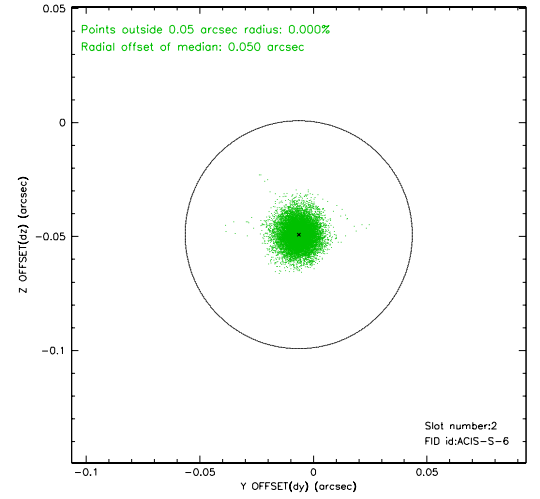
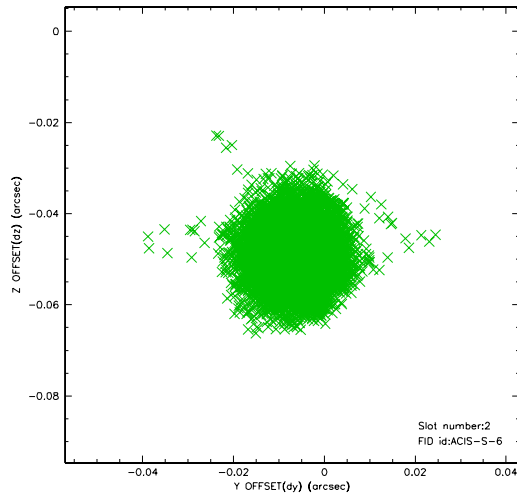
2.5.1 Slot 0



2.5.2 Slot 1

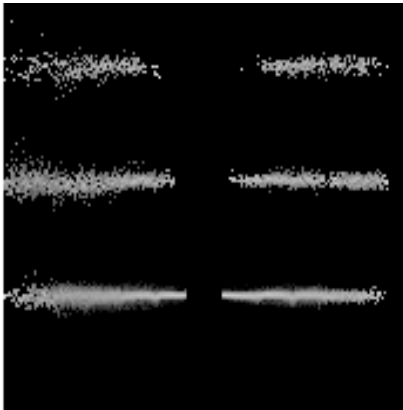


2.5.3 Slot 2

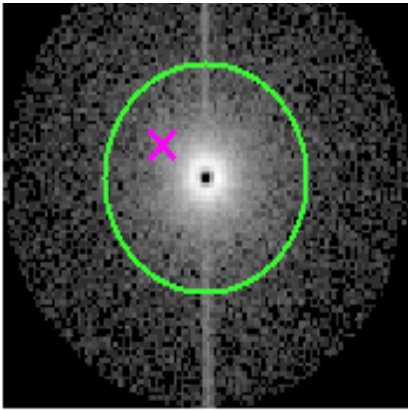


3 Gratings

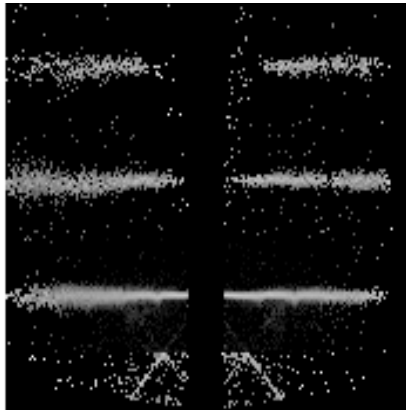
3.1 HEG Arm



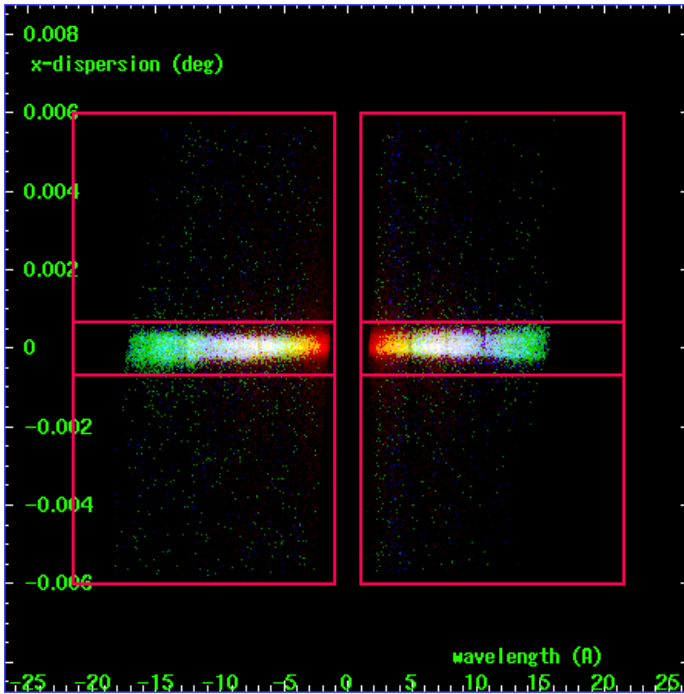
HEG Order Sort 123



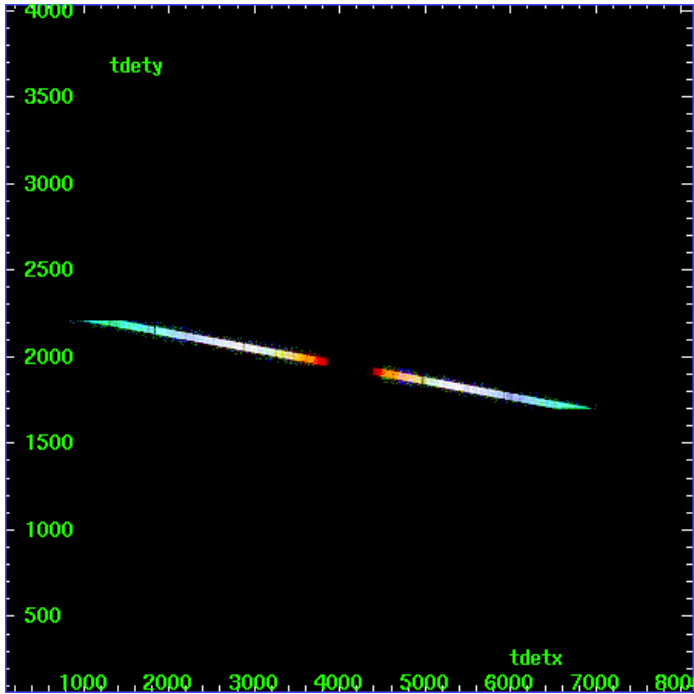
HEG Zero Order



HEG Order Sort ALL

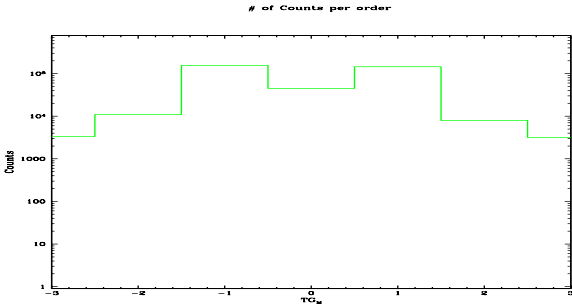


Spot Image HEG

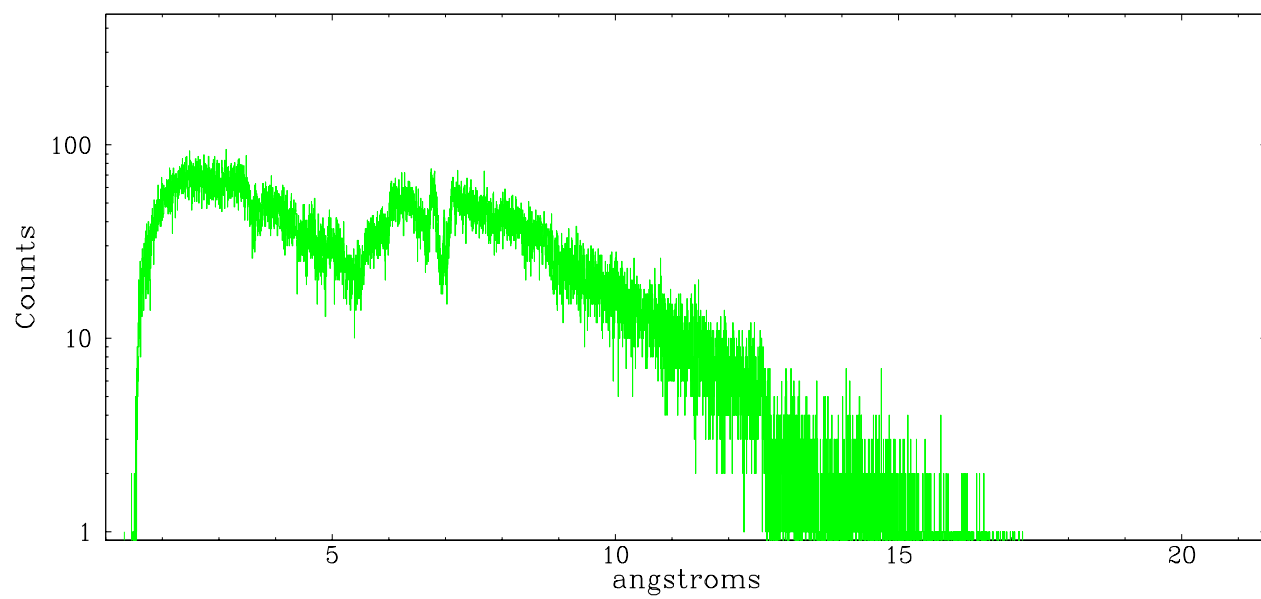


Full Detector HEG

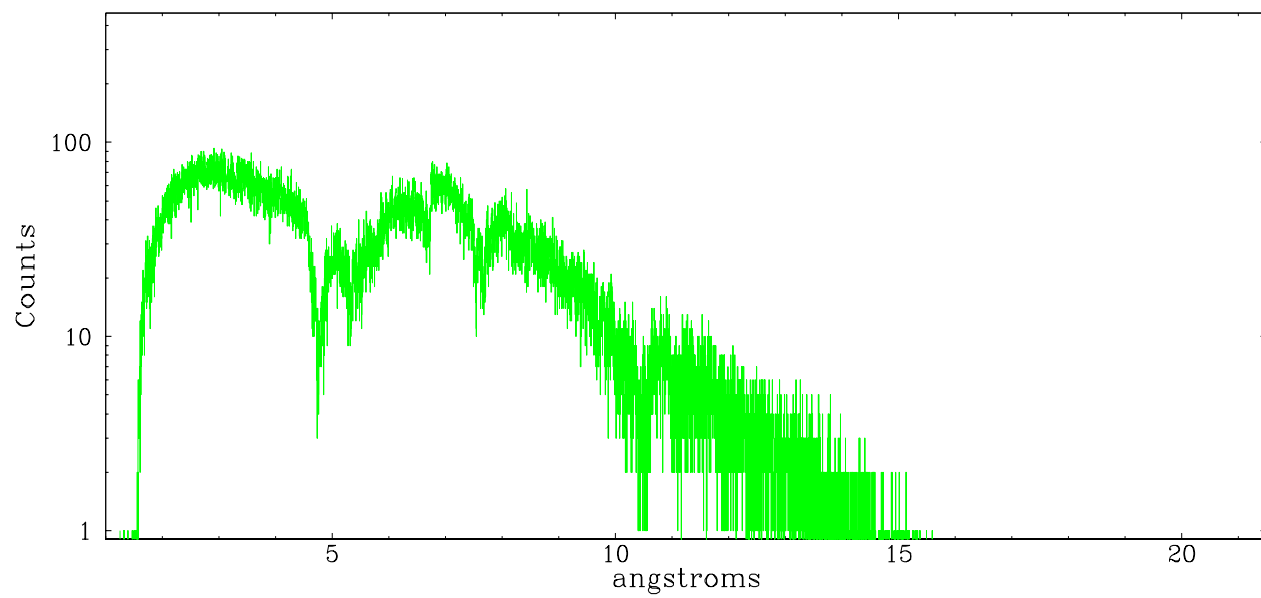
	order -3	order -2	order -1	order 0	order 1	order 2	order 3
Events	3338	10918	155137	45104	143983	7966	3176



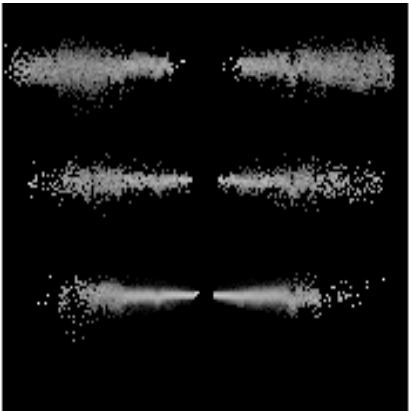
heg order -1



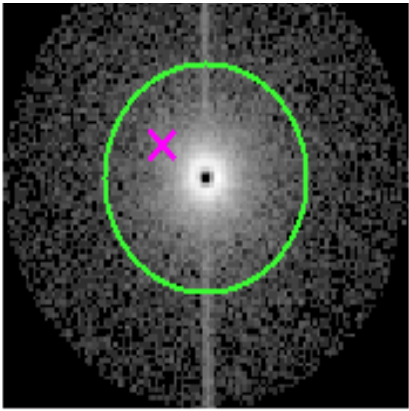
heg order +1



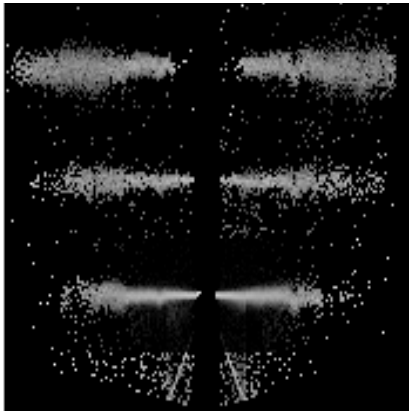
3.2 MEG Arm



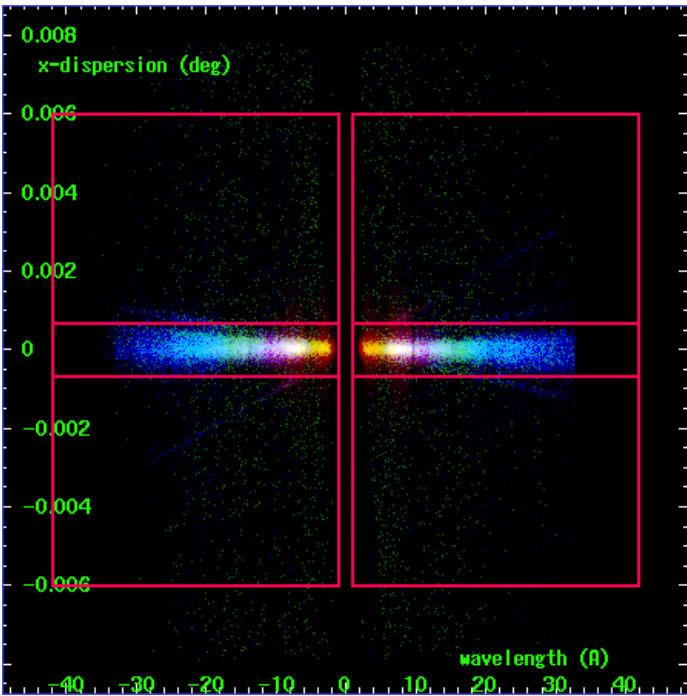
MEG Order Sort 123



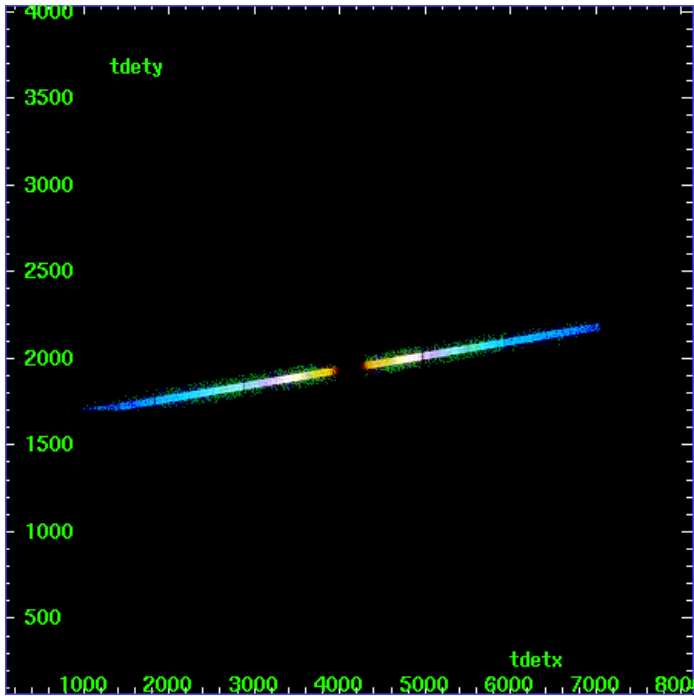
MEG Zero Order



MEG Order Sort ALL

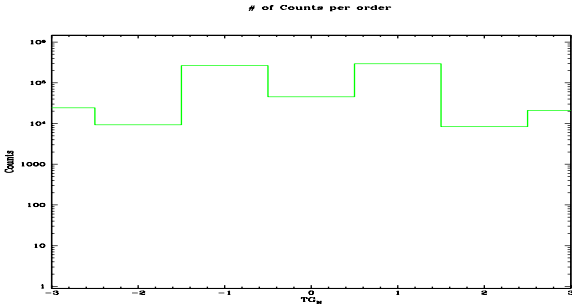


Spot Image MEG

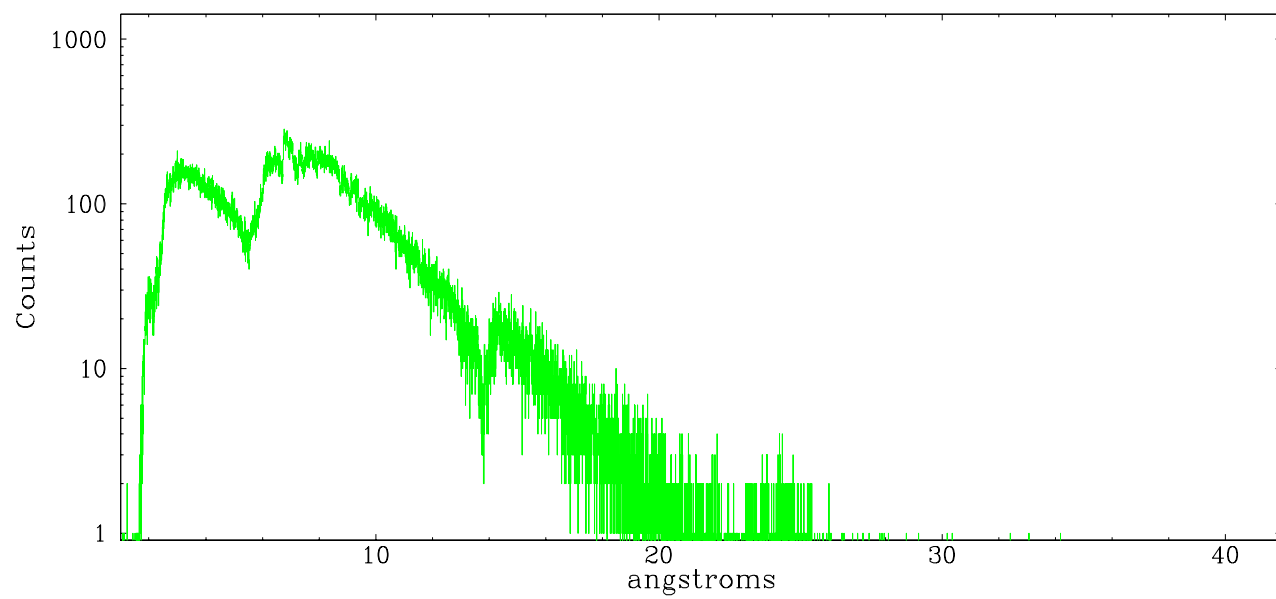


Full Detector MEG

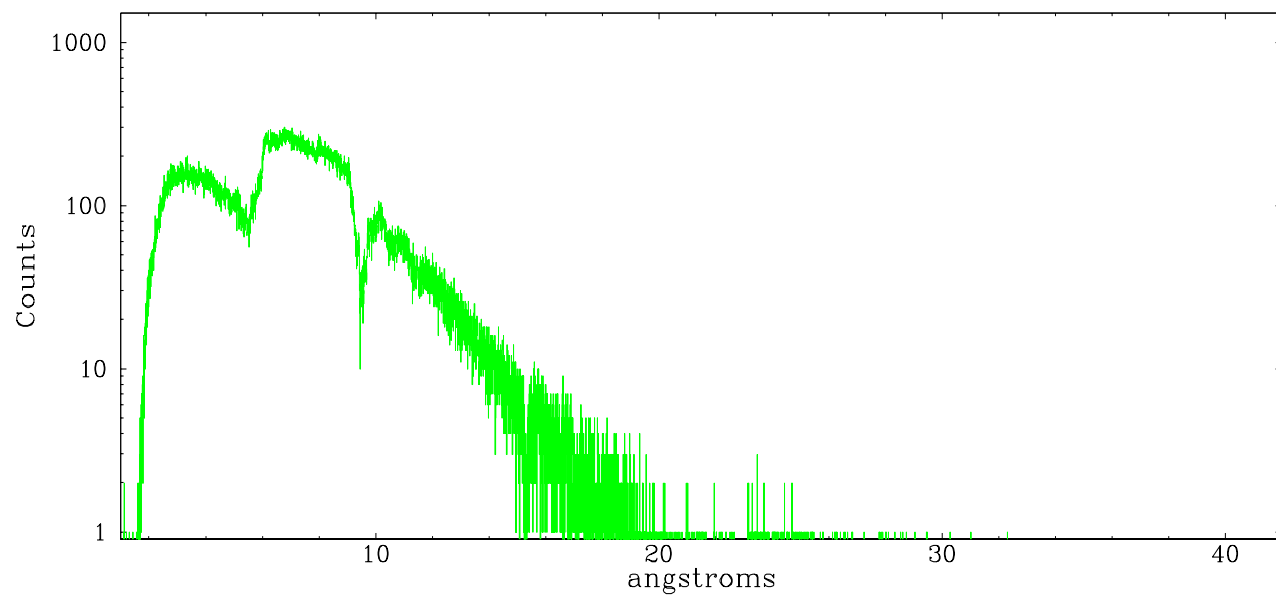
	order -3	order -2	order -1	order 0	order 1	order 2	order 3
Events	24393	9329	262507	45104	293247	8342	20894



meg order -1



meg order +1



A Summary

A.1 Status

V&V Scientist	Beth Sundheim
V&V Date (YYYY-MM-DD)	2006.07.03
V&V Edition	1
V&V Disposition and Status	OK
V&V Charge Time	52.936

A.2 Comments