

# V&V Reference Report

## L2 ASCDS Version : 8.5.1.1

Observation 3713 - L2 Version 6  
Chandra X-Ray Center

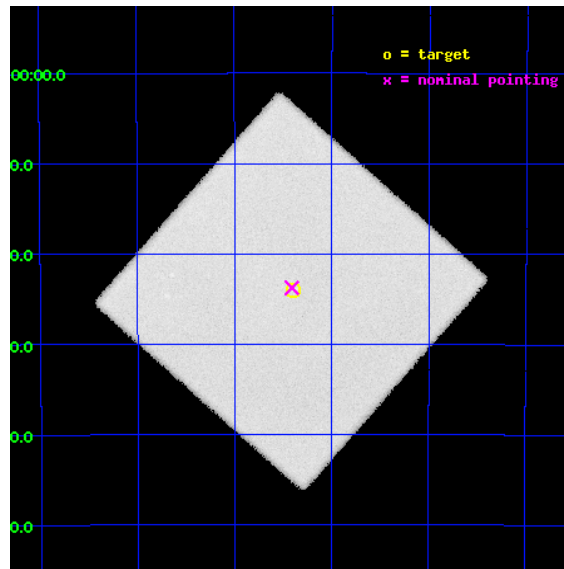
L2 Processing Date : Feb 14 2013

## Contents

<b>1</b>	<b>Front</b>	<b>2</b>
<b>2</b>	<b>OBI</b>	<b>3</b>
2.1	OBI . . . . .	3
2.1.1	Images . . . . .	3
2.1.2	Parameters . . . . .	4
2.1.3	Events . . . . .	4
2.2	Compared Parameters . . . . .	5
2.3	Aspect . . . . .	6
2.4	Star Slots . . . . .	9
2.4.1	Slot 3 . . . . .	9
2.4.2	Slot 4 . . . . .	10
2.4.3	Slot 5 . . . . .	11
2.4.4	Slot 6 . . . . .	12
2.4.5	Slot 7 . . . . .	13
2.5	FID Slots . . . . .	14
2.5.1	Slot 0 . . . . .	14
2.5.2	Slot 1 . . . . .	15
2.5.3	Slot 2 . . . . .	16
<b>A</b>	<b>Summary</b>	<b>17</b>
A.1	Status . . . . .	17
A.2	Comments . . . . .	17

# 1 Front

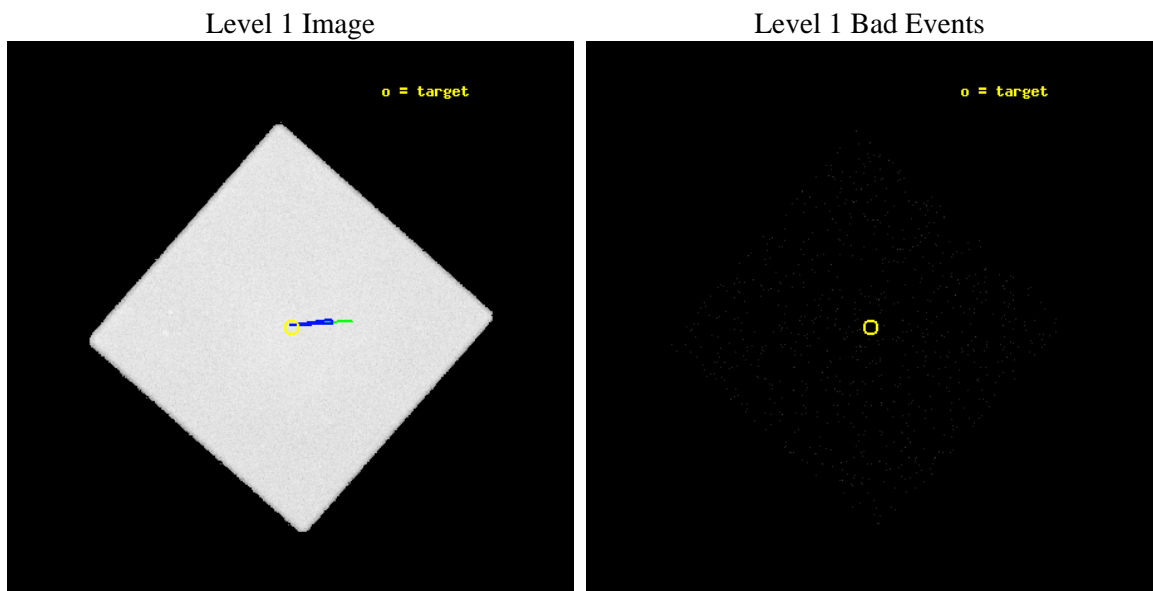
seq_num	290246	Sequence number
obs_id	3713	Observation id
title	AO4 CALIBRATION OBSERVATIONS TO MONITOR THE HRC LOW ENERGY QE	Prop
observer	Dr. CXC Calibration	Principal investigator
object	VELA REMNANT	Source name
ra_targ	129.1	Observer's specified target RA [deg]
dec_targ	-43.4	Observer's specified target Dec [deg]
ra_nom	129.10250389052	Nominal RA [deg]
dec_nom	-43.396242626907	Nominal Dec [deg]
roll_nom	86.542537732416	Nominal Roll [deg]
revision	6	Processing version of data
ontime	12714.100547254	[s]
livetime	10883.003259807	Ontime multiplied by DTCOR
l2events	1141856	Number of level 2 events



## 2 OBI

### 2.1 OBI

#### 2.1.1 Images



### 2.1.2 Parameters

obi_num	1	Obi number	sched_exp_time	20000.000000	[s] Scheduled observation exposure time
ascdsver	8.5.1.1	Processing system revision	ontime	12714.100547254	[s]
caldsver	4.5.5	&#160	l1events	1515148	Number of level 1 events
date	2013-02-14T00:05:24	Date and time of file creation			
revision	6	Processing version of data			

### 2.1.3 Events

#### Level 1 Events

	<b>segment 0</b>
level 1 events	1515148
rejected events	9689
rejected %	0%

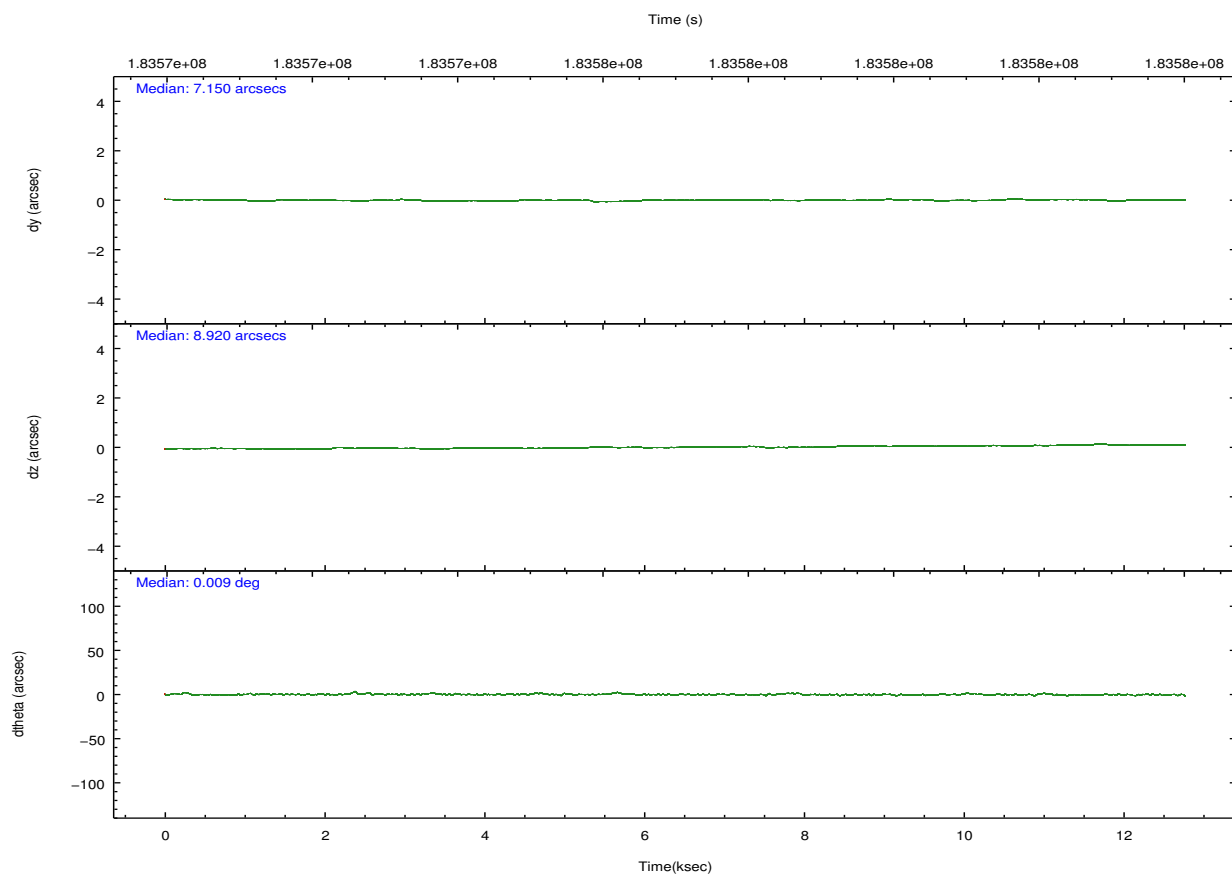
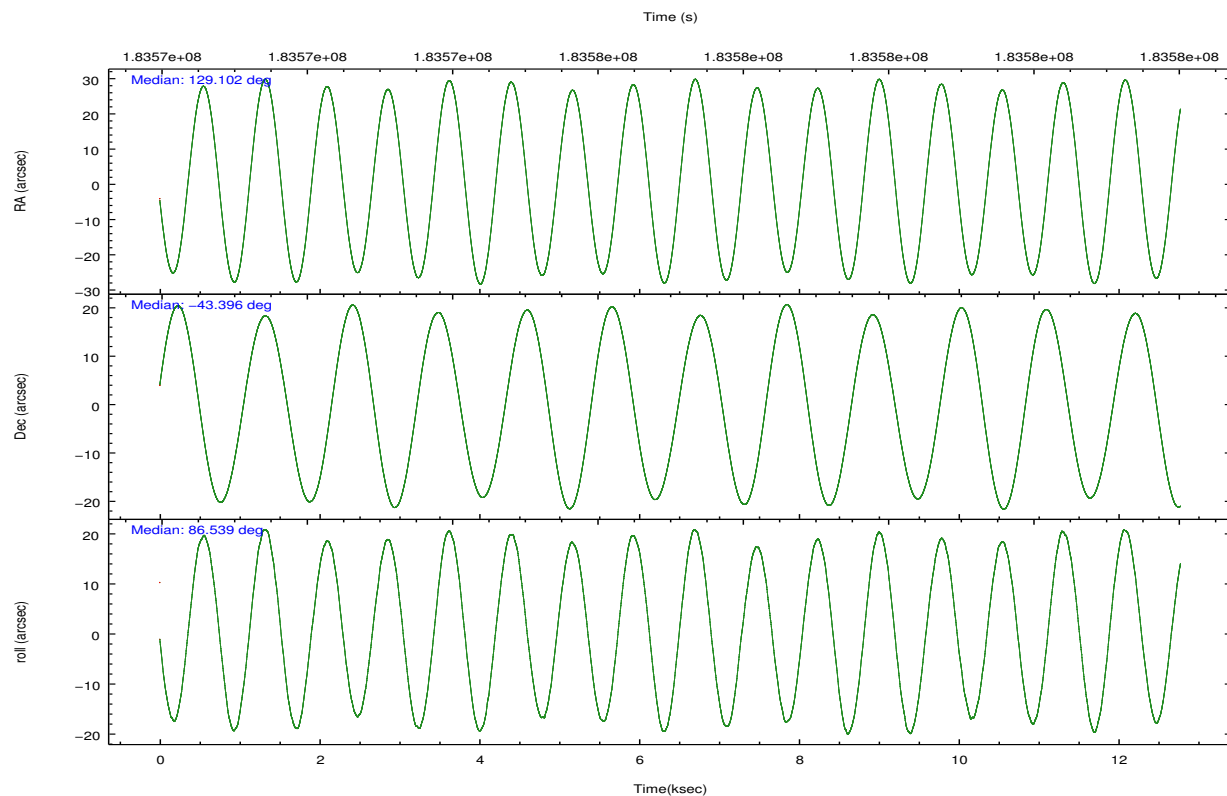


## 2.2 Compared Parameters

Parameter	Planned	Actual
Instrument	HRC	HRC
Detector	HRC-I	HRC-I
Grating	NONE	NONE
Data mode	OBSERVING	OBSERVING
Observation mode	POINTING	POINTING
[deg] Pointing RA	129.119974	129.1025038905242
[deg] Pointing Dec	-43.420222	-43.39624262690692
[deg] Pointing Roll	86.650029	86.54253773241561
[deg] Roll angle	85.340000	85.340000
[deg] Roll tolerance	2.000000	2.000000
Roll constraint allows 180D rotation	N	N
[mm] SIM focus pos	-1.038866356238299	-1.038866356238299
[mm] SIM defocus	0.00142623211714632	0.00142623211714632
[mm] SIM translation stage pos	126.9829799899862	126.9829799899862
[mm] SIM translation stage offset	0.002514315301596071	0.002514315301596071
[s] Observation start time (MET)	183570599.184000	183570599.184
Observation start date	2003-10-26T15:48:55	2003-10-26T15:49:59
[s] Observation end time (MET)	183583377.000000	183583377
Observation end date	2003-10-26T19:22:57	2003-10-26T19:22:56

Parameter	Planned	Actual
Obspar format version number	7	7
Obspar file type	PREDICTED	ACTUAL
Obspar update status	OVERRIDE	OVERRIDE

## 2.3 Aspect

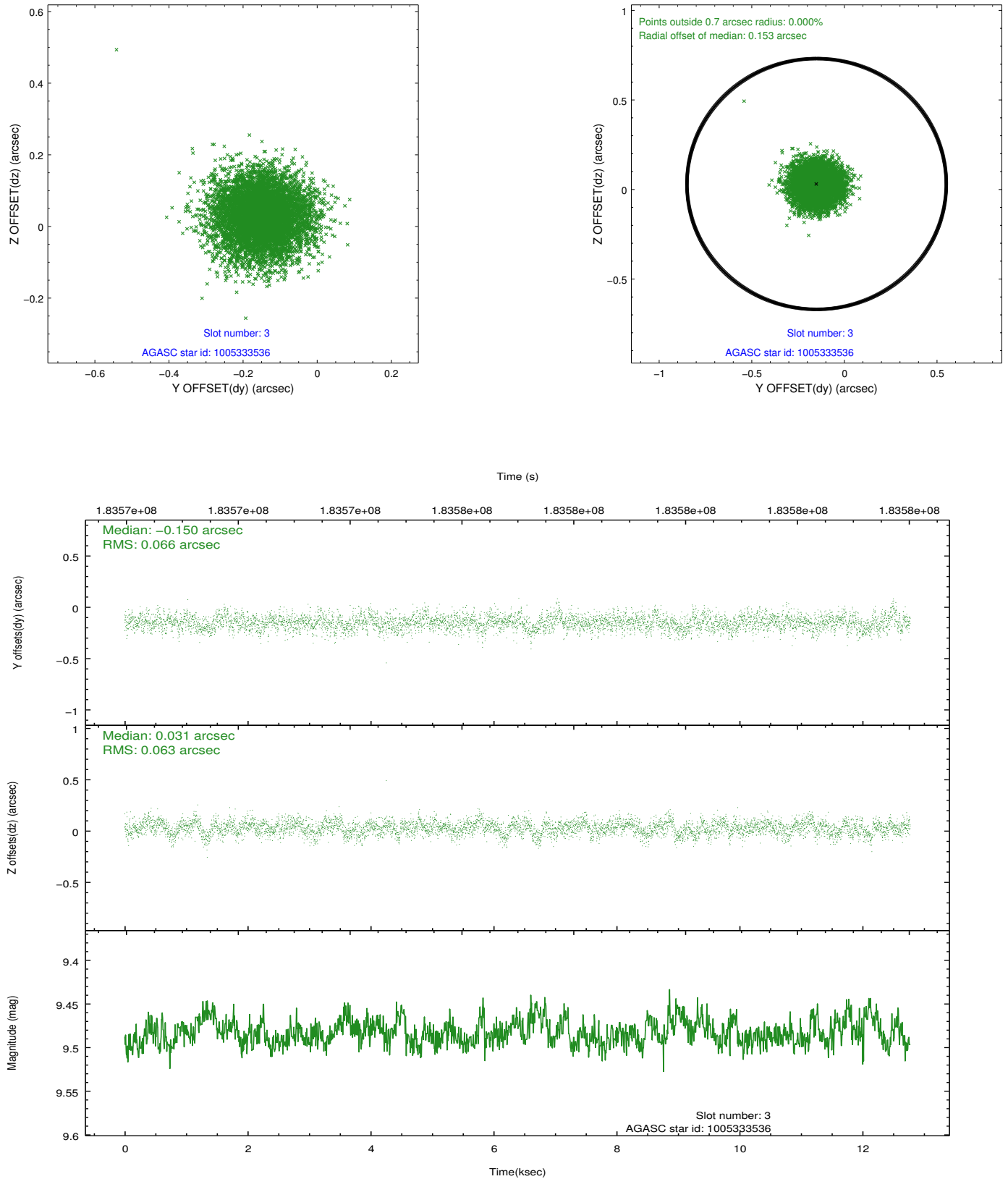


### Slot Statistics

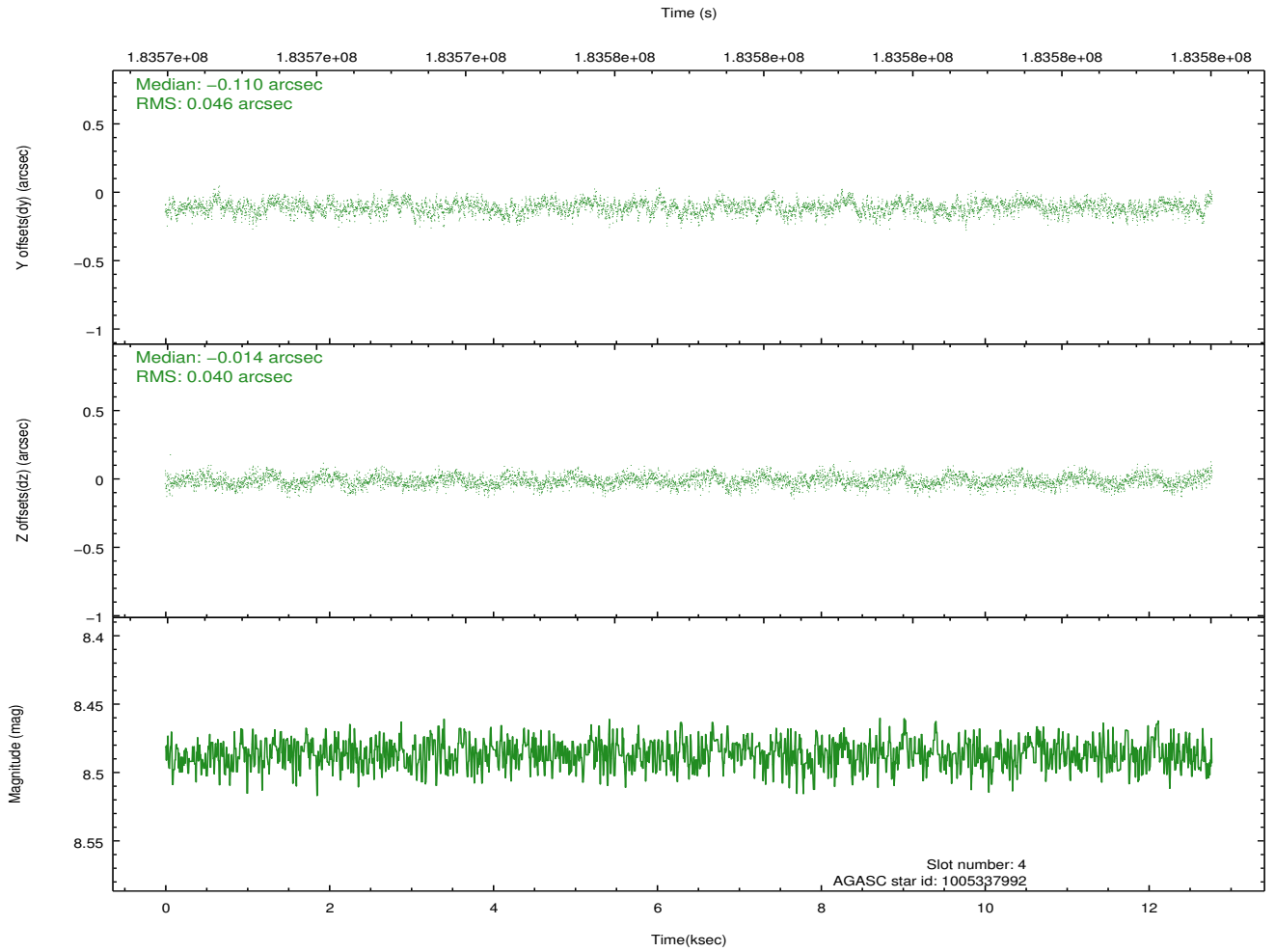
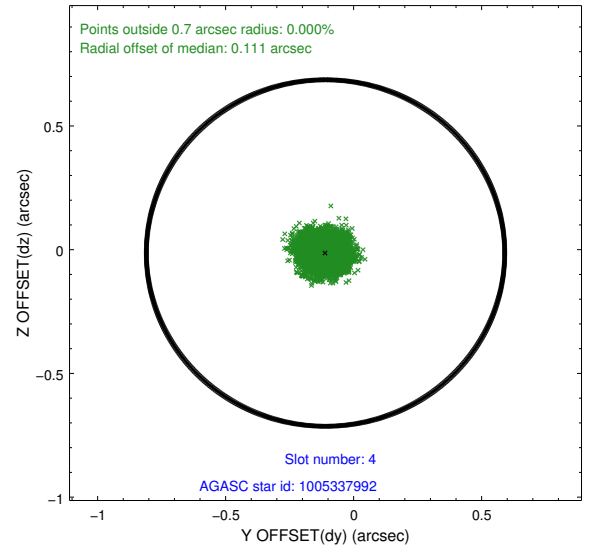
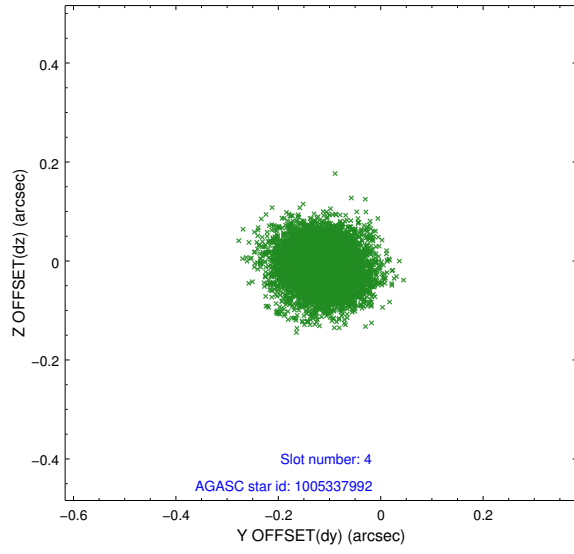
slot	status	id	mag	n_pts	med_dy	med_dz	dr1	dr2	ra	dec	mean_y	mean_z
0	FID	HRC-I-2	7.01	3117	0.064	-0.055	0.007	0.012	0.000000	0.000000	849.94	-1298.47
1	FID	HRC-I-3	7.06	3117	-0.039	-0.002	0.007	0.015	0.000000	0.000000	-1190.97	1007.34
2	FID	HRC-I-4	7.01	3117	0.094	-0.030	0.007	0.015	0.000000	0.000000	1279.78	1005.61
3	GUIDE	1005333536	9.48	6231	-0.150	0.031	0.098	0.159	128.886420	-42.801856	2185.13	745.86
4	GUIDE	1005337992	8.49	6232	-0.110	-0.014	0.066	0.105	128.344661	-42.851803	1913.76	2161.69
5	GUIDE	1005848792	8.25	6233	0.004	0.168	0.073	0.114	129.279861	-43.533078	-381.32	-440.06
6	GUIDE	1005862096	7.04	6233	0.185	-0.146	0.062	0.099	128.290617	-43.683863	-1084.63	2098.73
7	GUIDE	1005869776	9.15	6229	0.066	-0.037	0.098	0.155	128.321731	-43.737414	-1271.71	2005.28

## 2.4 Star Slots

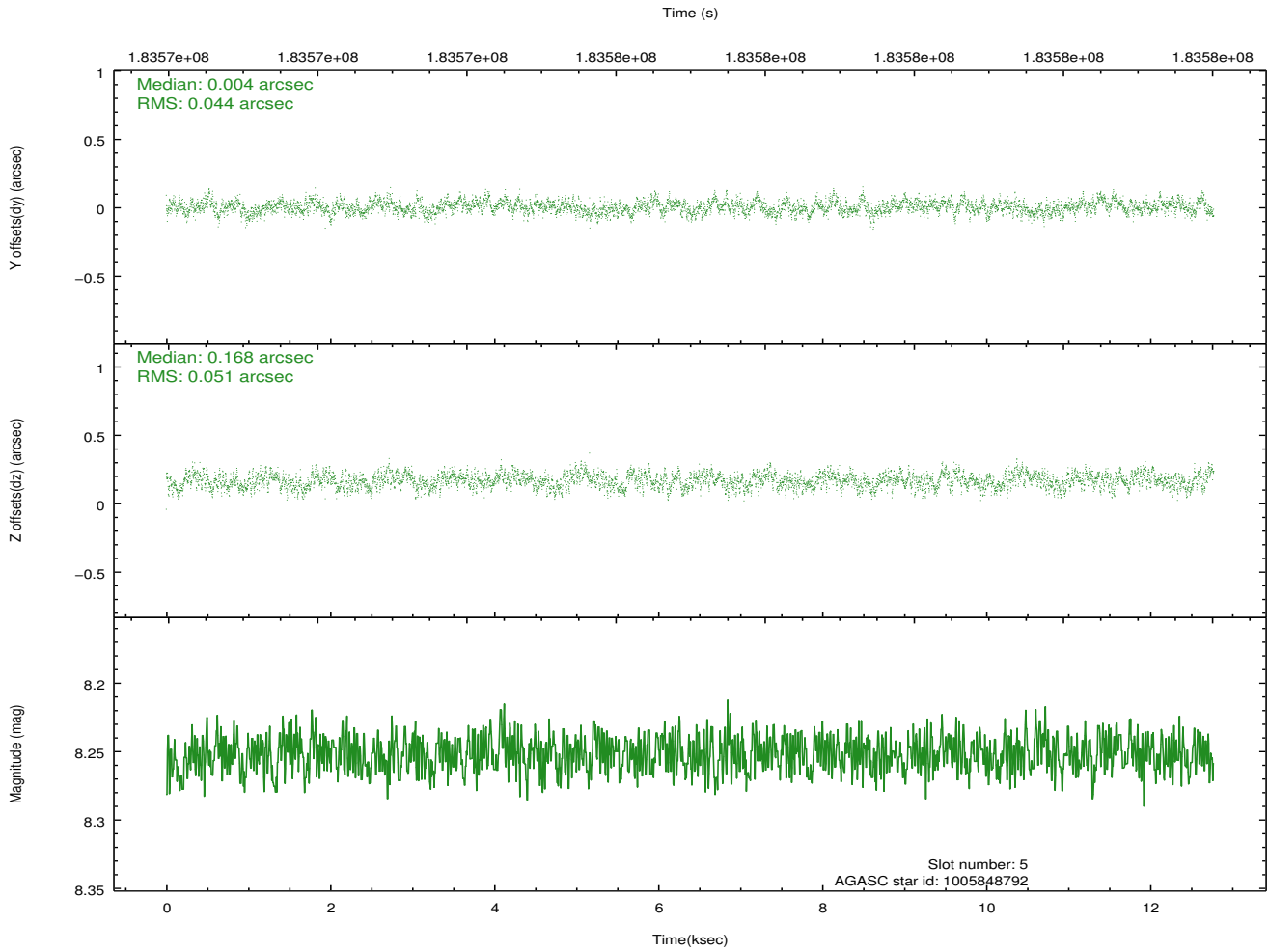
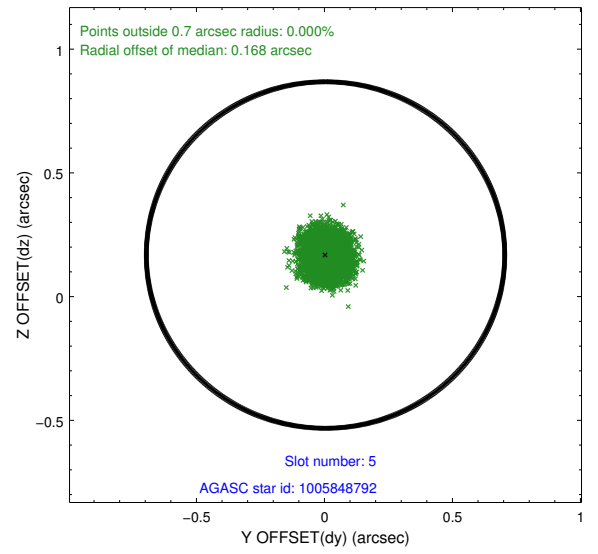
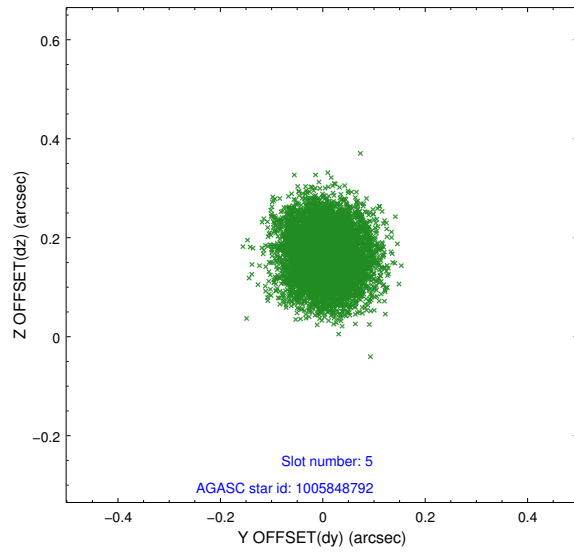
### 2.4.1 Slot 3



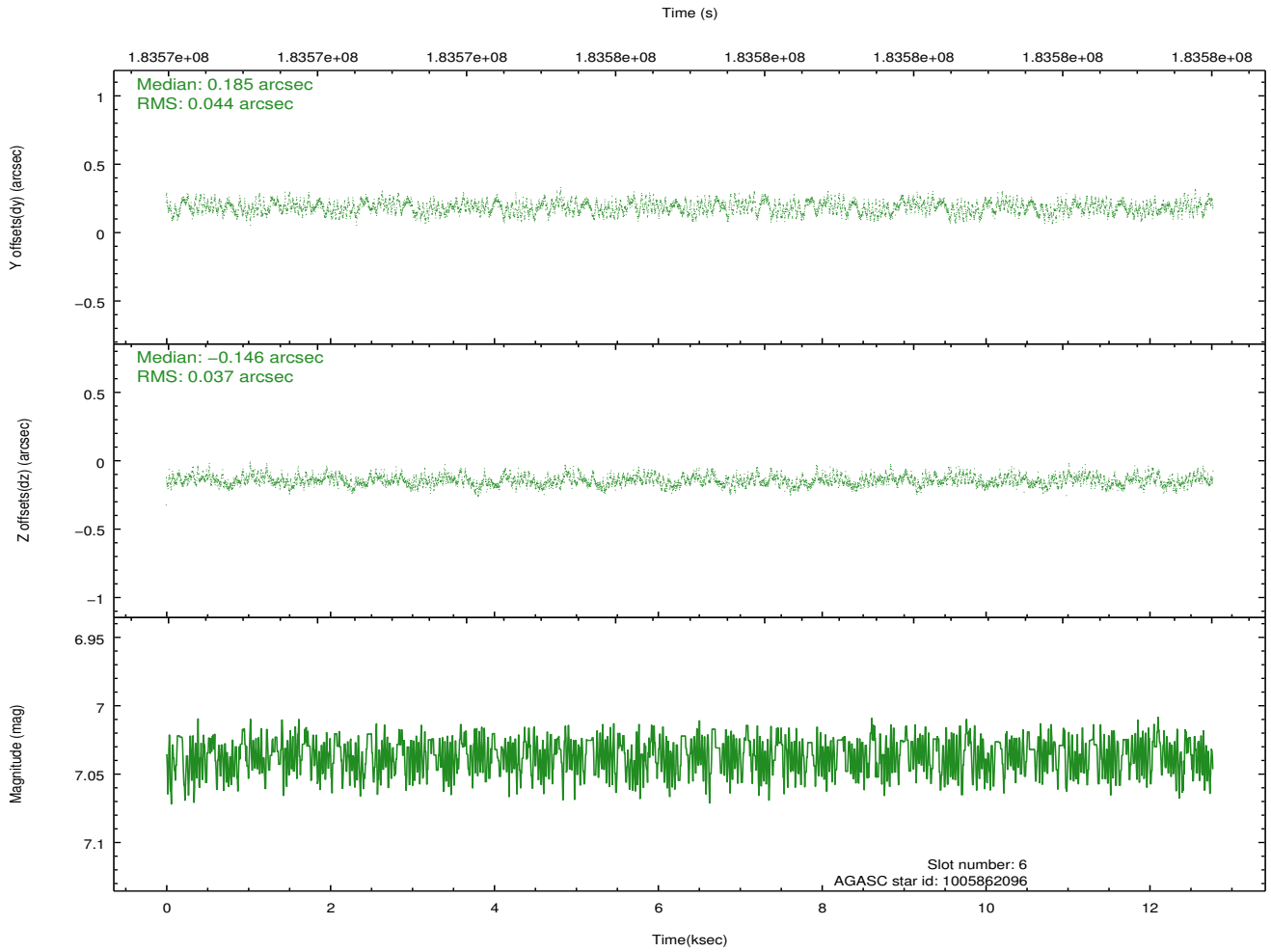
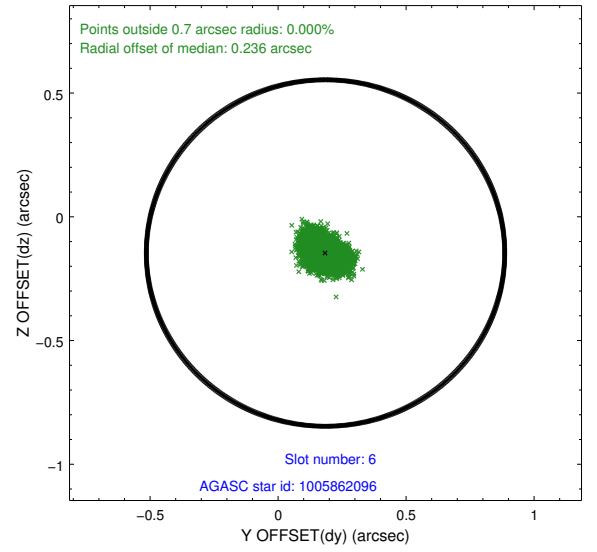
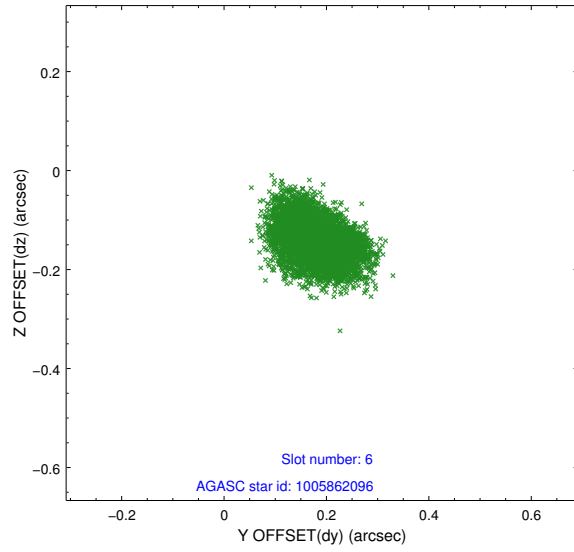
## 2.4.2 Slot 4



### 2.4.3 Slot 5

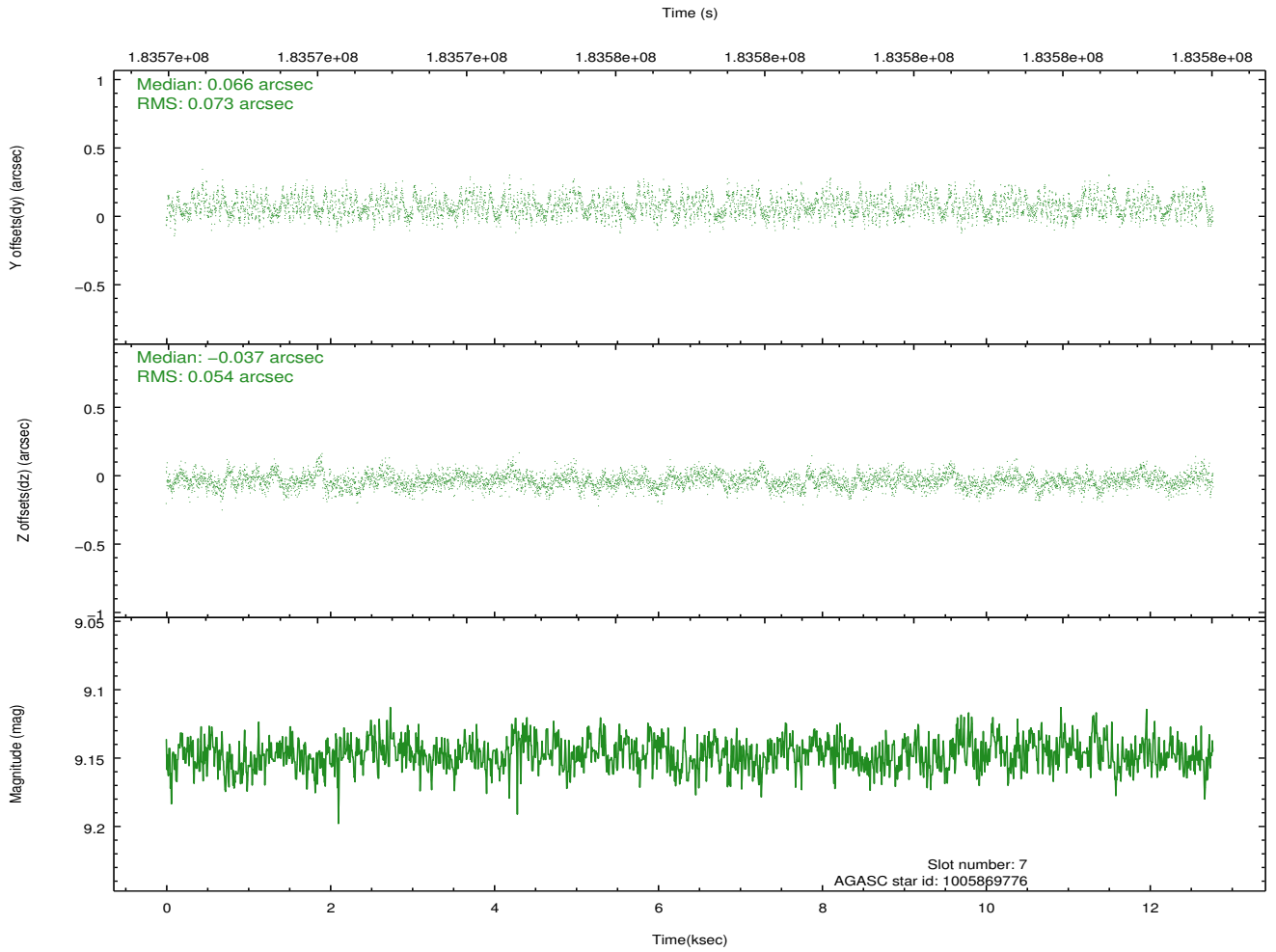
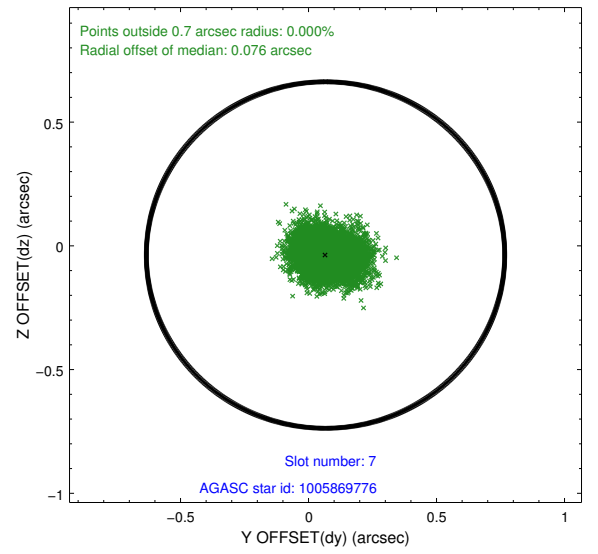
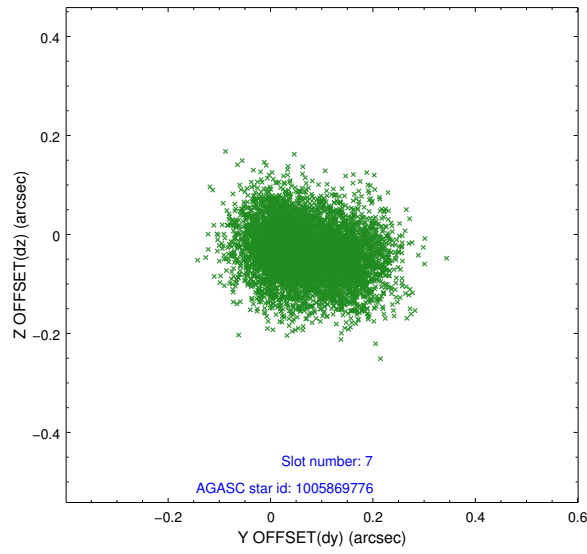


## 2.4.4 Slot 6



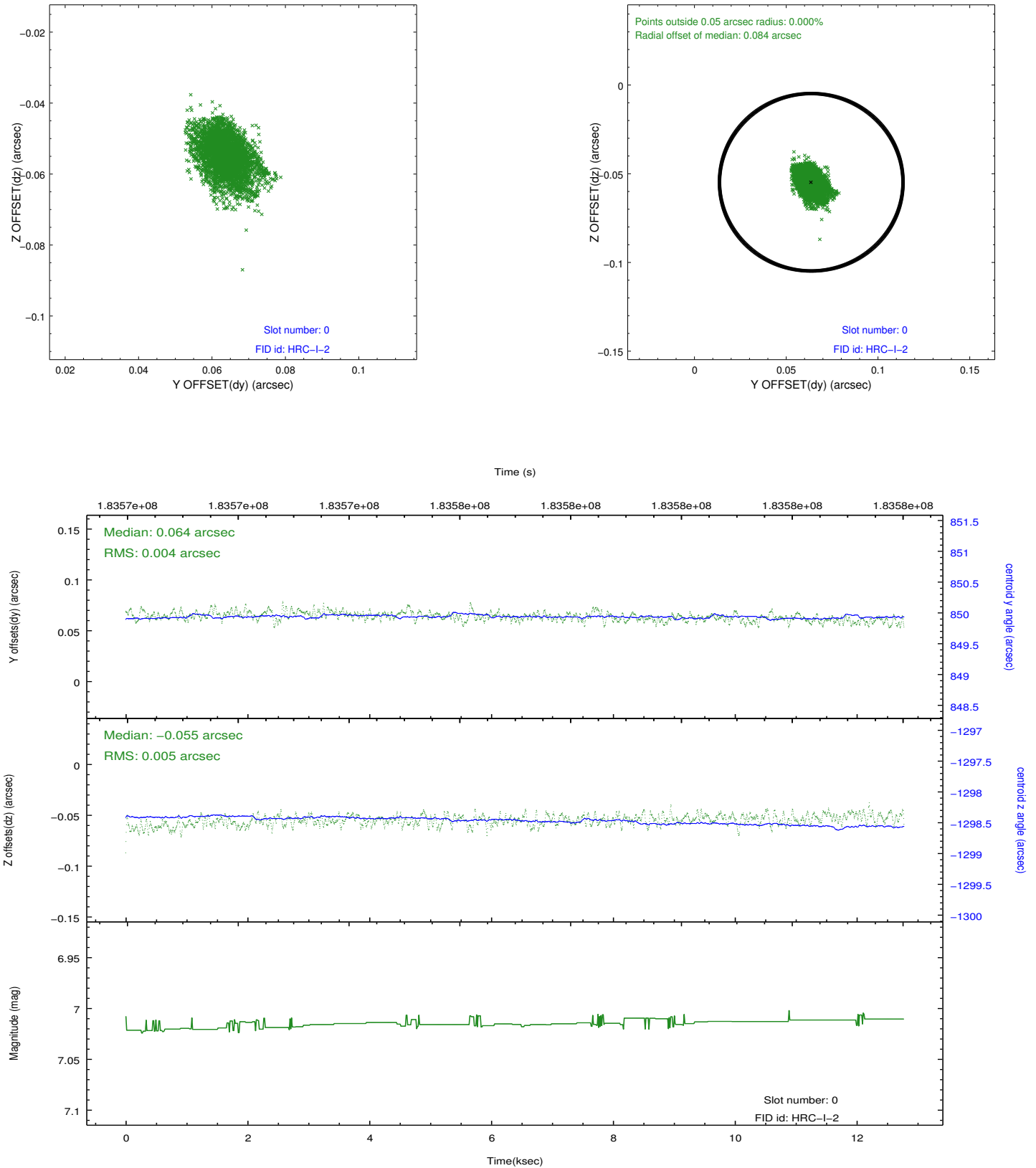


## 2.4.5 Slot 7

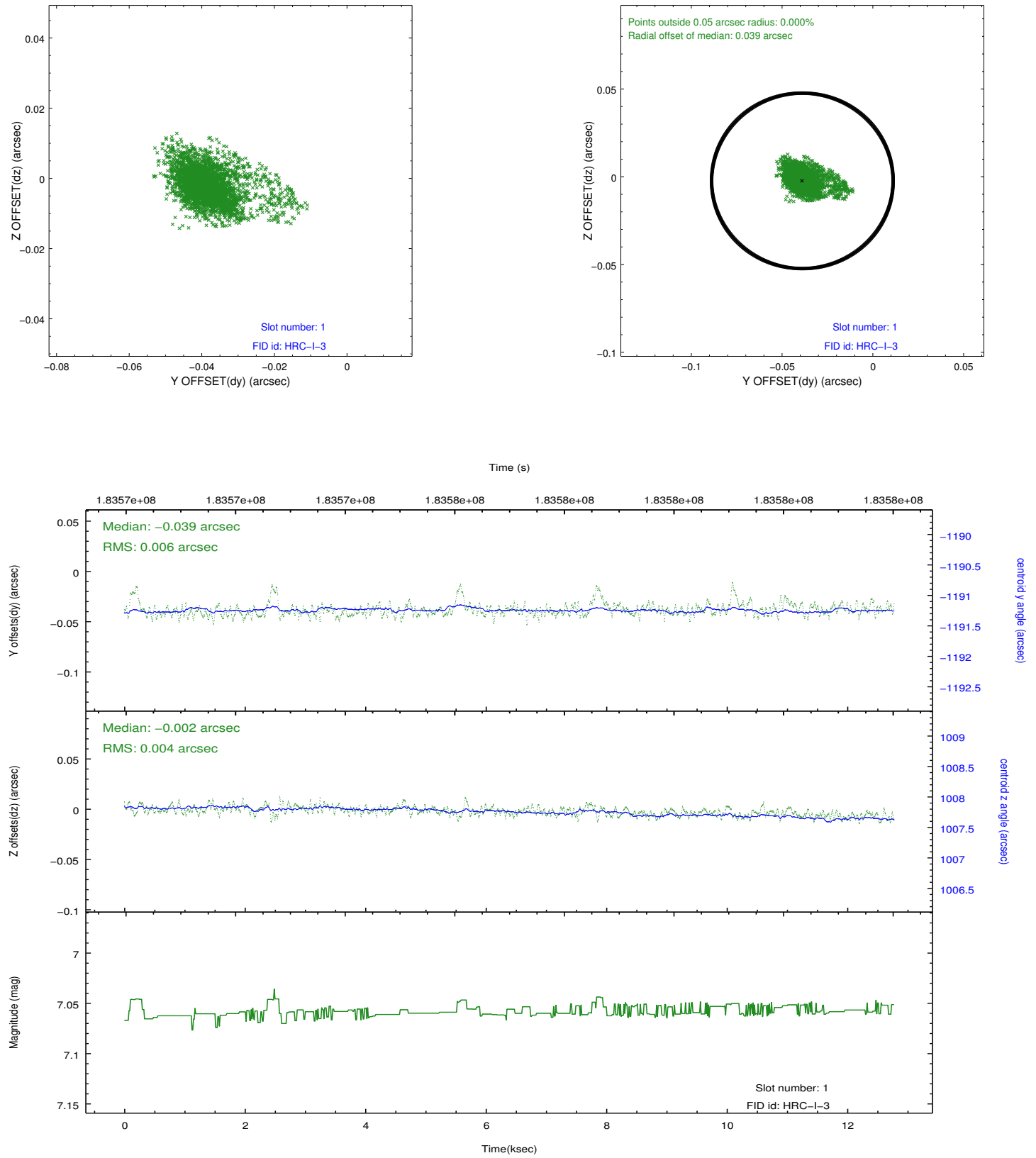


## 2.5 FID Slots

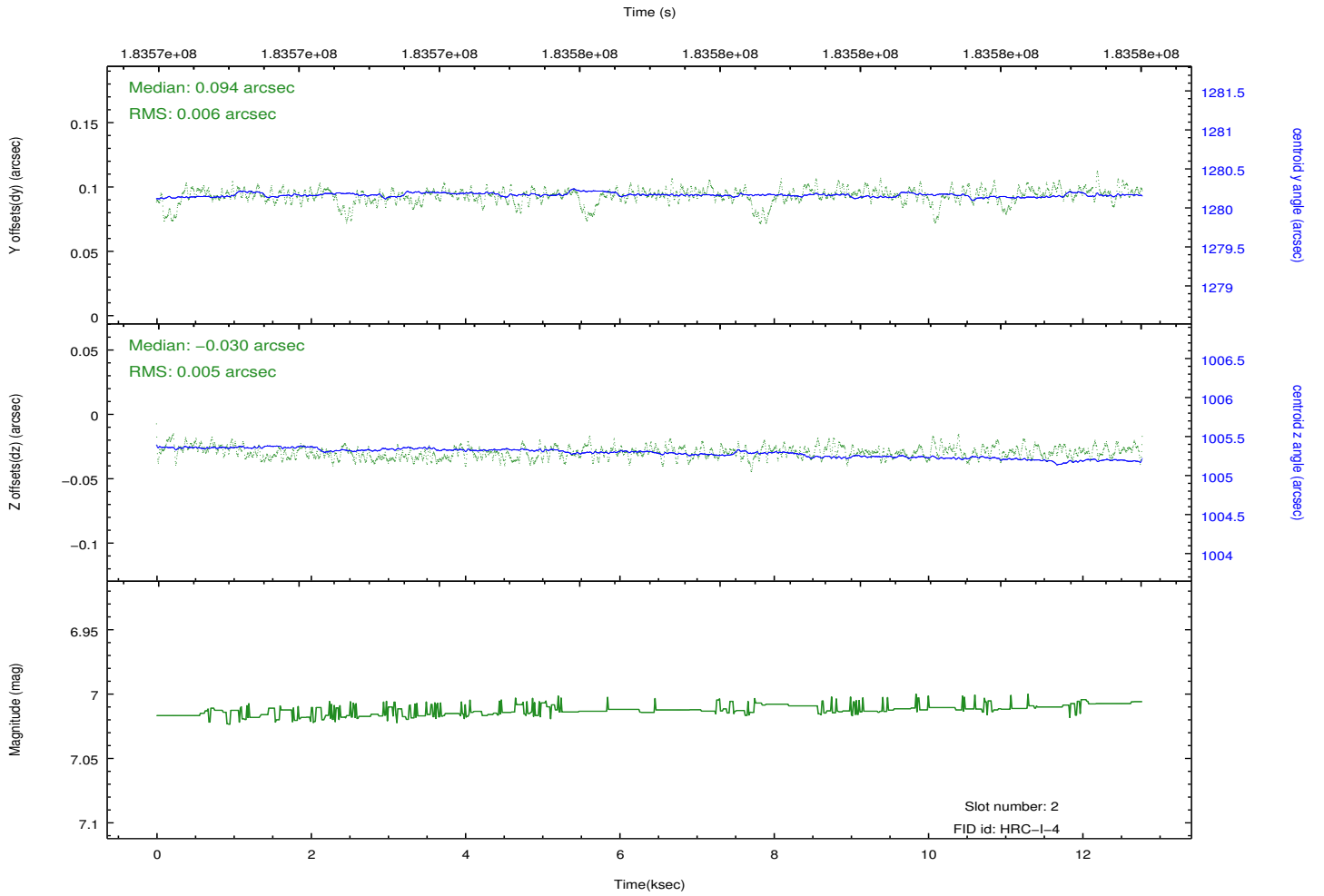
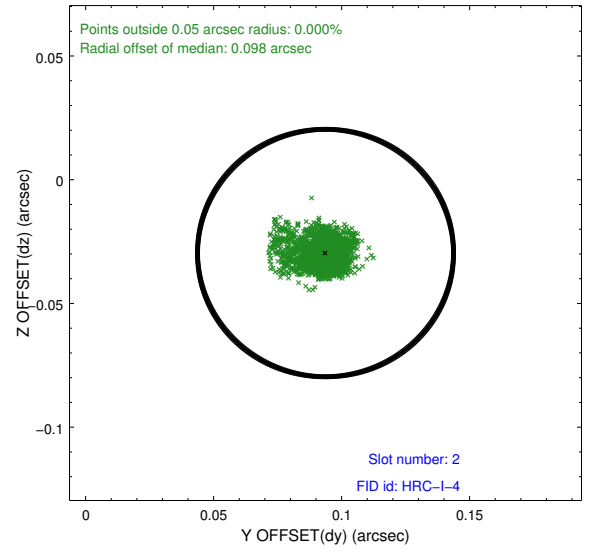
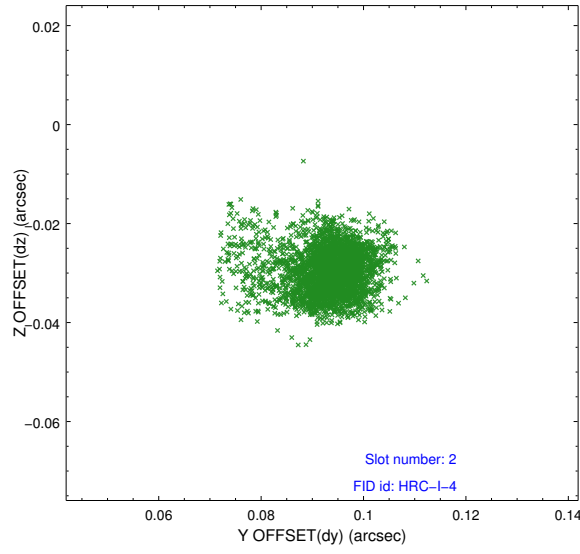
### 2.5.1 Slot 0



## 2.5.2 Slot 1



### 2.5.3 Slot 2



# A Summary

## A.1 Status

V&V Scientist	Jen Lauer
V&V Date (YYYY-MM-DD)	2013.02.15
V&V Edition	1
V&V Disposition and Status	OK
V&V Charge Time	12.845

## A.2 Comments

Charge time for this ObsId remains at previous value of 12.845 ks although with the current processing the charge time would have been 12.71 ksec.

=====

This observation was interrupted by safing of the science instruments onboard Chandra due to high solar radiation environment. The observation was interrupted at 299:19:22:30. Due to a high radiation environment, the instruments were safed and the observation terminated early. This observation has been reprocessed so that the aspect solution correctly handles the instrument safing and maneuver activities at the end of the observation.

=====

Roll constraint met.