

# V&V Reference Report

## L2 ASCDS Version : 8.4.5

Observation 3683 - L2 Version 3  
Chandra X-Ray Center

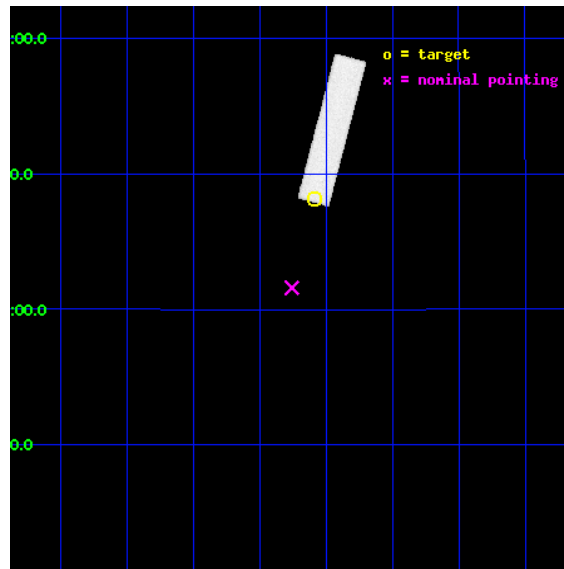
L2 Processing Date : Oct 22 2012

## Contents

<b>1</b>	<b>Front</b>	<b>2</b>
<b>2</b>	<b>OBI</b>	<b>3</b>
2.1	OBI . . . . .	3
2.1.1	Images . . . . .	3
2.1.2	Parameters . . . . .	4
2.1.3	Events . . . . .	4
2.2	Compared Parameters . . . . .	5
2.3	Aspect . . . . .	6
2.4	Star Slots . . . . .	9
2.4.1	Slot 3 . . . . .	9
2.4.2	Slot 4 . . . . .	10
2.4.3	Slot 5 . . . . .	11
2.4.4	Slot 6 . . . . .	12
2.4.5	Slot 7 . . . . .	13
2.5	FID Slots . . . . .	14
2.5.1	Slot 0 . . . . .	14
2.5.2	Slot 1 . . . . .	15
2.5.3	Slot 2 . . . . .	16
<b>A</b>	<b>Summary</b>	<b>17</b>
A.1	Status . . . . .	17
A.2	Comments . . . . .	17

# 1 Front

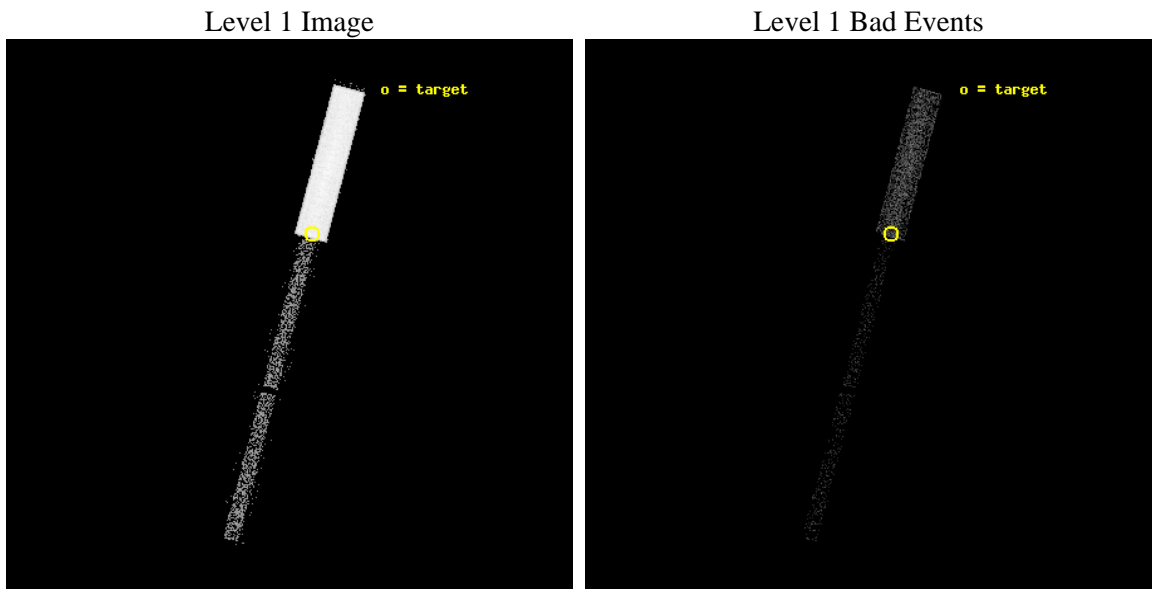
seq_num	290237	Sequence number
obs_id	3683	Observation id
title	AO4 MEASUREMENTS OF THE OPTICAL/UV TRANSMISSION OF THE HRC AND ACIS FILTERS	Proposal title
observer	Dr. CXC Calibration	Principal investigator
object	BETELGEUSE	Source name
ra_targ	88.792917	Observer's specified target RA [deg]
dec_targ	7.407056	Observer's specified target Dec [deg]
ra_nom	88.87892779894	Nominal RA [deg]
dec_nom	7.0800002359249	Nominal Dec [deg]
roll_nom	284.7133260717	Nominal Roll [deg]
revision	3	Processing version of data
ontime	2143.531340003	[s]
livetime	2132.8260419551	Ontime multiplied by DTCOR
l2events	76428	Number of level 2 events



## 2 OBI

### 2.1 OBI

#### 2.1.1 Images



### 2.1.2 Parameters

obi_num	0	Obi number	sched_exp_time	2000.000000	[s] Scheduled observation exposure time
ascdsver	8.4.5	Processing system revision	ontime	2143.531340003	[s]
caldbver	4.5.2	&#160	l1events	115537	Number of level 1 events
date	2012-10-22T04:20:05	Date and time of file creation			
revision	3	Processing version of data			

### 2.1.3 Events

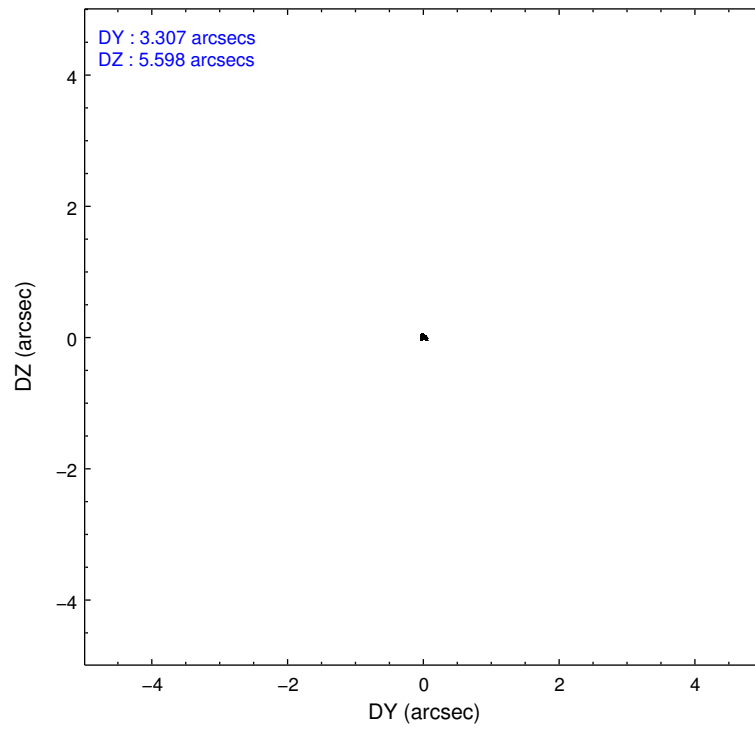
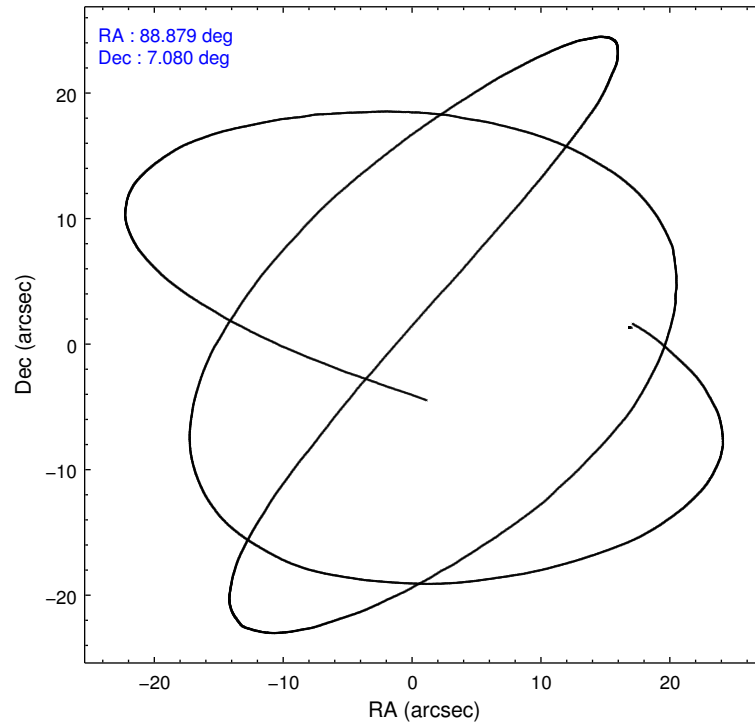
Level 1 Events

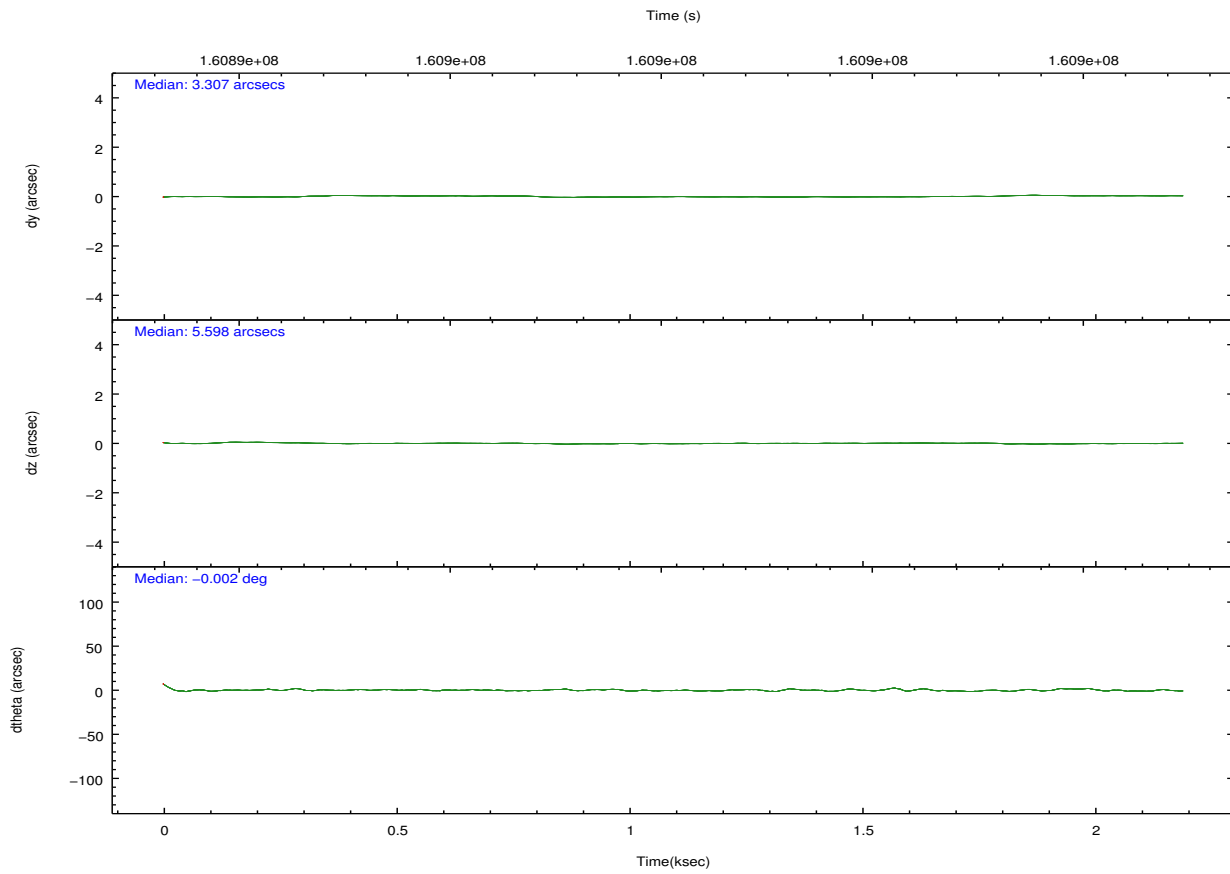
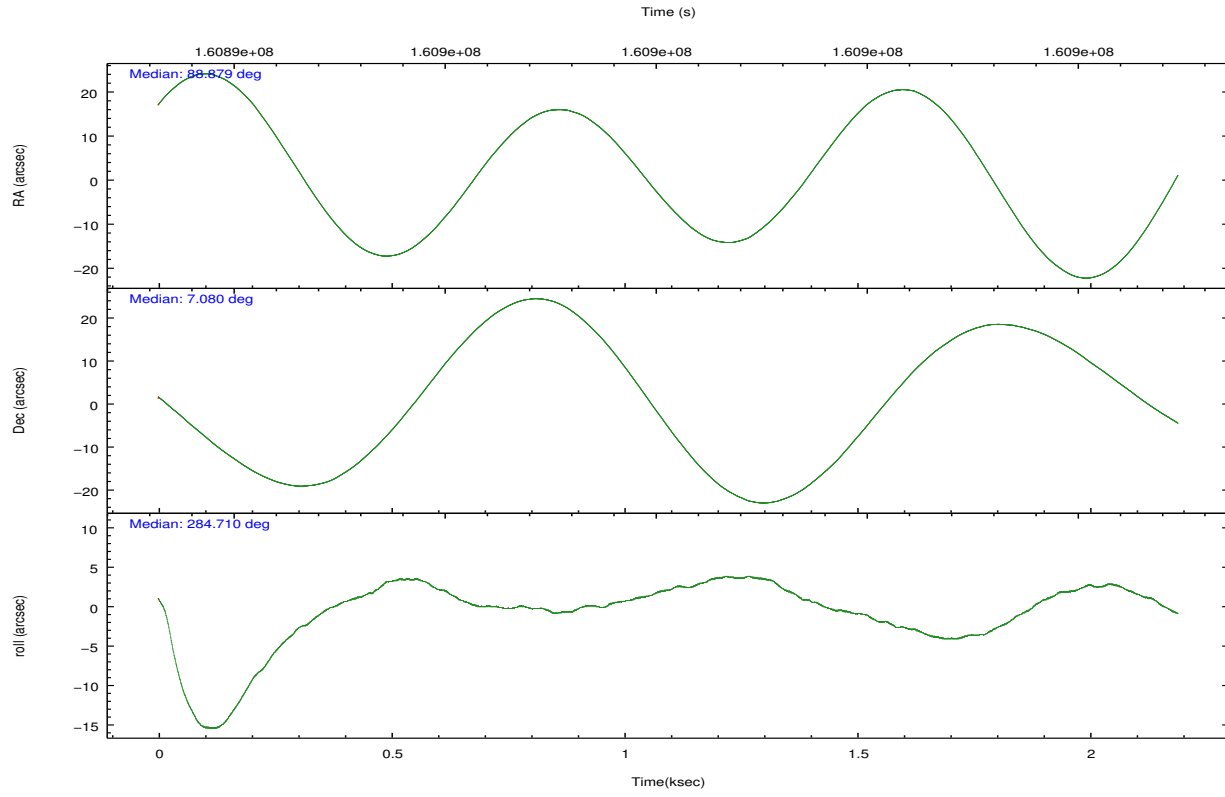
	<b>segment 1</b>	<b>segment 2</b>	<b>segment 3</b>
level 1 events	105300	8957	1280
rejected events	7241	8908	1280
rejected %	6%	99%	100%

## 2.2 Compared Parameters

Parameter	Planned	Actual	Parameter	Planned	Actual
Instrument	HRC	HRC	Obspar format version number	7	7
Detector	HRC-S	HRC-S	Obspar file type	PREDICTED	ACTUAL
Grating	NONE	NONE	Obspar update status	NONE	UPDATED
Data mode	OBSERVING	OBSERVING			
Observation mode	POINTING	POINTING			
[deg] Pointing RA	88.857706	88.87892779894015			
[deg] Pointing Dec	7.099302	7.08000023592491			
[deg] Pointing Roll	284.648537	284.7133260717044			
[s] Window start time (MET)	160488064.184000	160488064.184000			
[s] Window stop time (MET)	162820864.184000	162820864.184000			
[mm] SIM focus pos	-1.429586	-1.428180813131781			
[mm] SIM defocus	0.1037507710433287	0.1051558262725154			
[mm] SIM translation stage pos	250.455976	250.466033080201			
[mm] SIM translation stage offset	0	-0.01005468664627074			
[s] Observation start time (MET)	160894620.184000	160894243.63577			
Observation start date	2003-02-06T04:55:56	2003-02-06T04:50:43			
[s] Observation end time (MET)	160896620.184000	160896753.86087			
Observation end date	2003-02-06T05:29:16	2003-02-06T05:32:33			

## 2.3 Aspect



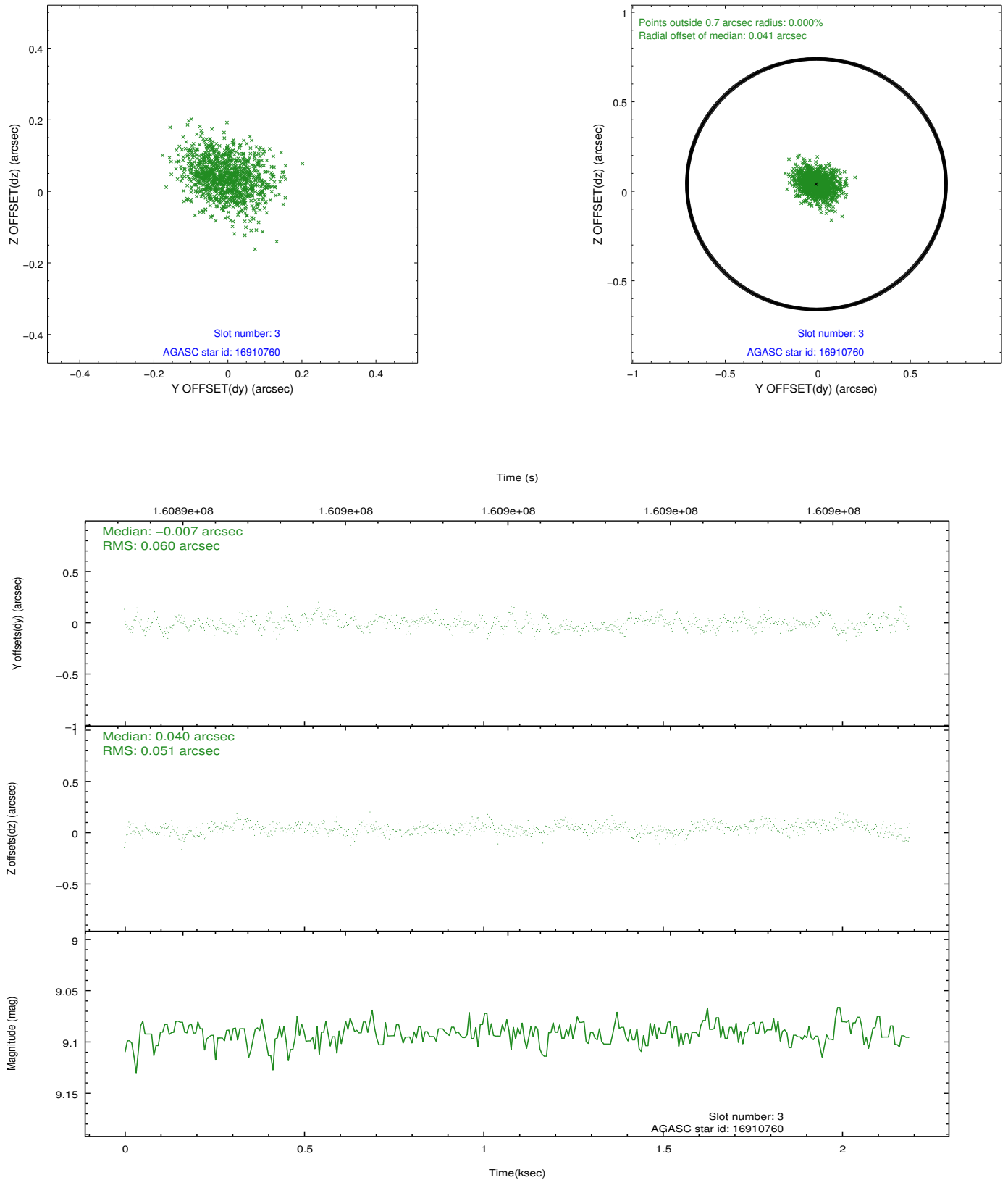


Slot Statistics

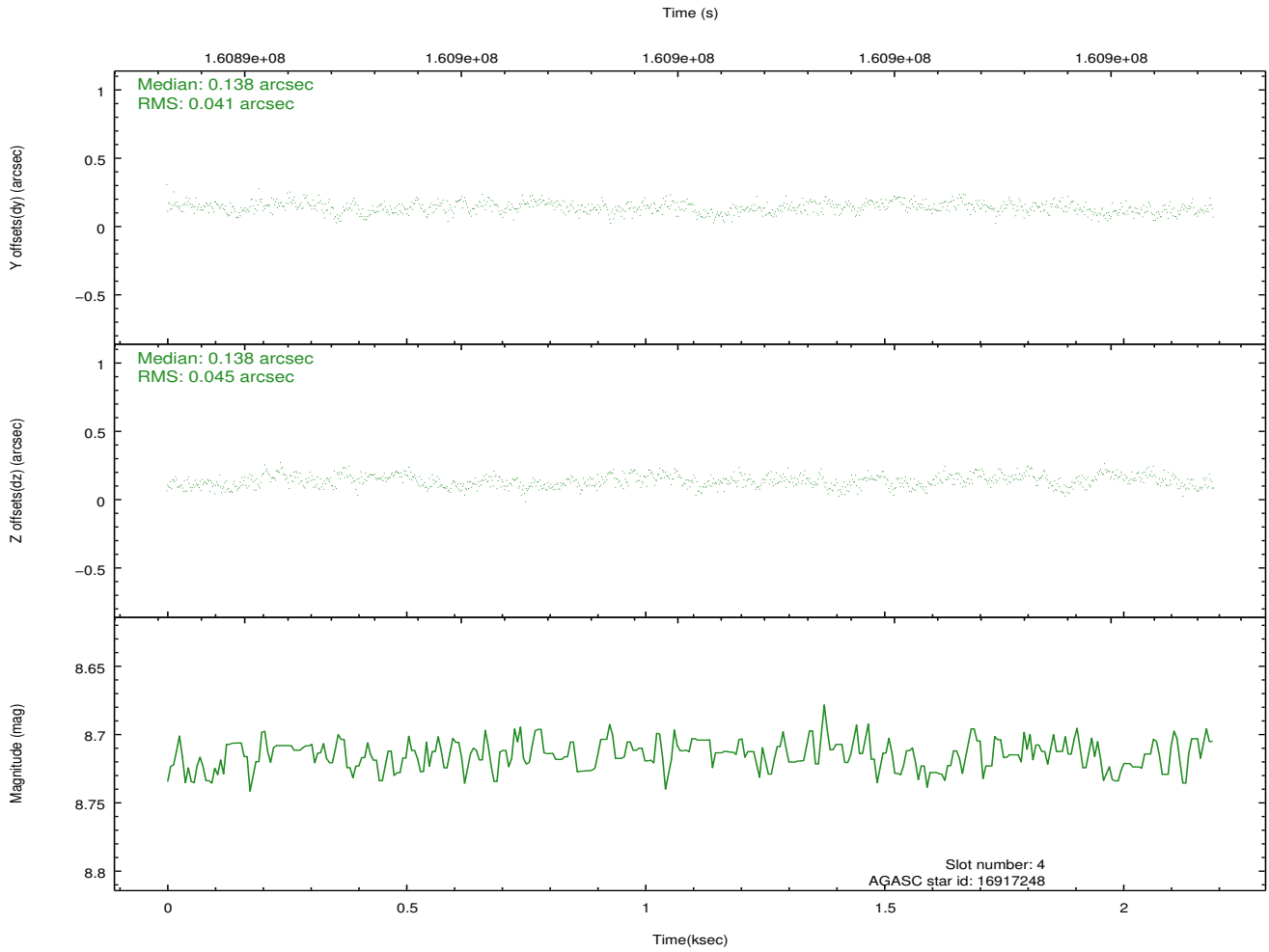
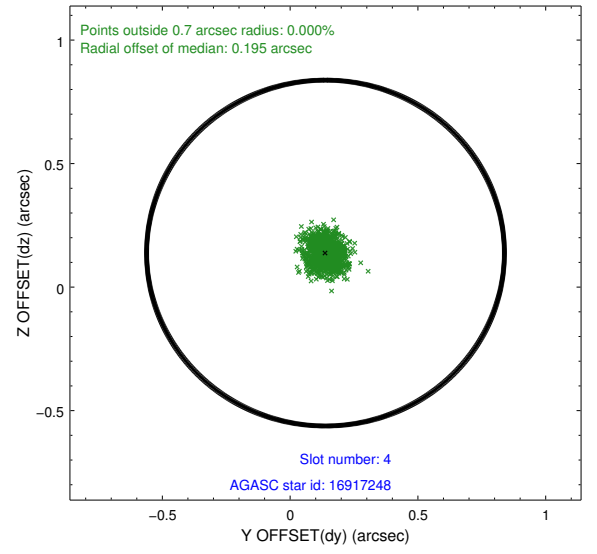
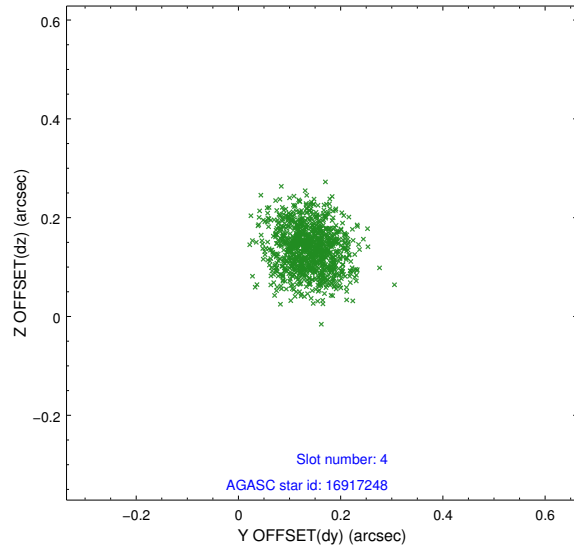
slot	status	id	mag	n_pts	med_dy	med_dz	dr1	dr2	ra	dec	mean_y	mean_z
0	FID	HRC-S-2	7.01	535	0.112	-0.155	0.008	0.014	0.000000	0.000000	1242.28	-446.80
1	FID	HRC-S-3	7.02	534	0.142	-0.108	0.006	0.012	0.000000	0.000000	-1157.74	574.62
2	FID	HRC-S-4	6.96	535	0.151	-0.032	0.009	0.016	0.000000	0.000000	1238.75	579.12
3	GUIDE	16910760	9.09	1069	-0.007	0.040	0.082	0.137	89.059695	7.486642	-1166.91	1050.55
4	GUIDE	16917248	8.71	1068	0.138	0.138	0.066	0.104	89.306967	6.774731	1534.95	1260.17
5	GUIDE	93852536	9.63	1069	0.045	-0.076	0.099	0.167	88.414730	7.576698	-2061.66	-1093.30
6	GUIDE	93856056	7.98	1069	-0.188	-0.084	0.064	0.104	88.147460	7.547925	-2207.45	-2044.39
7	GUIDE	16918456	9.57	1068	0.013	-0.007	0.127	0.197	89.526896	7.059699	738.82	2275.98

## 2.4 Star Slots

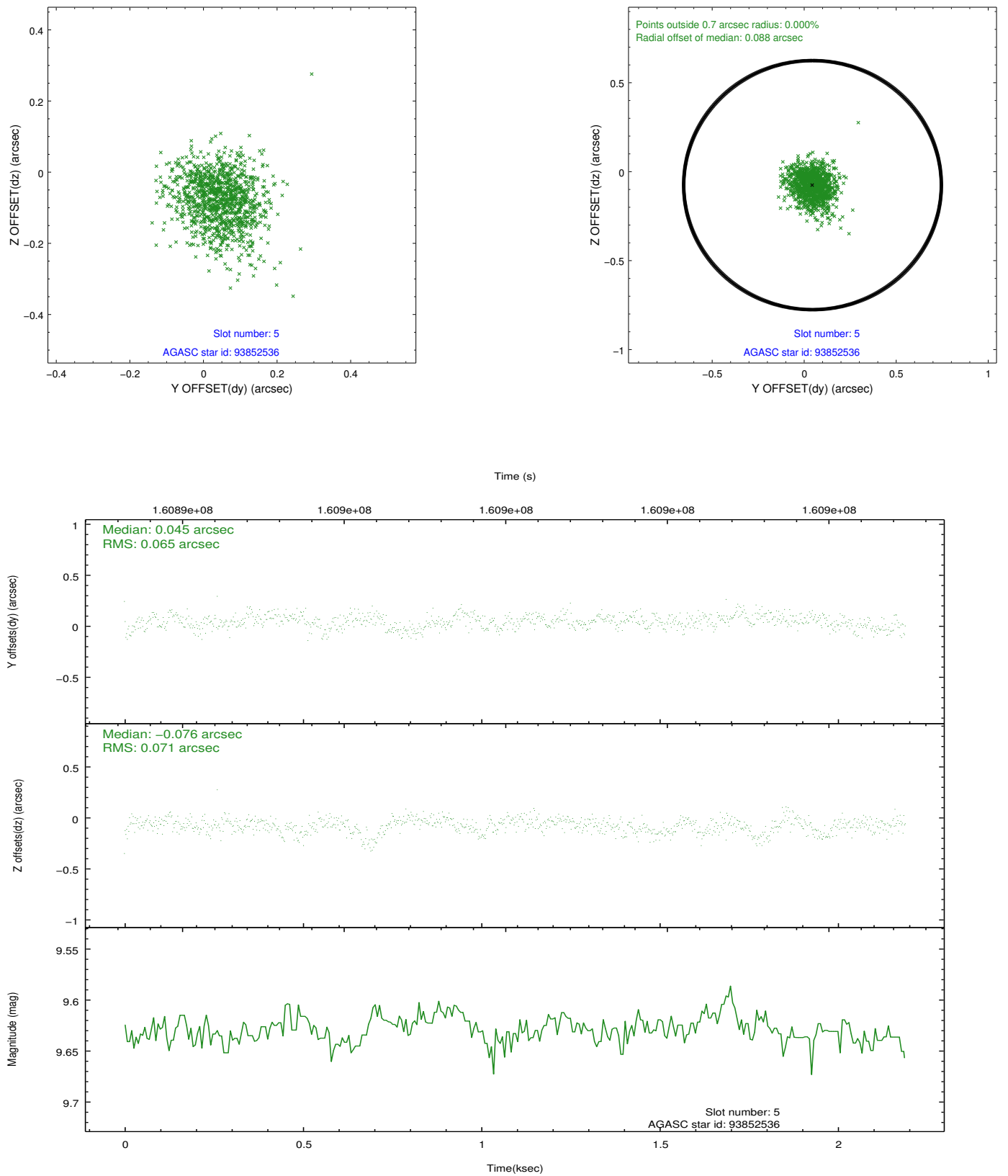
### 2.4.1 Slot 3



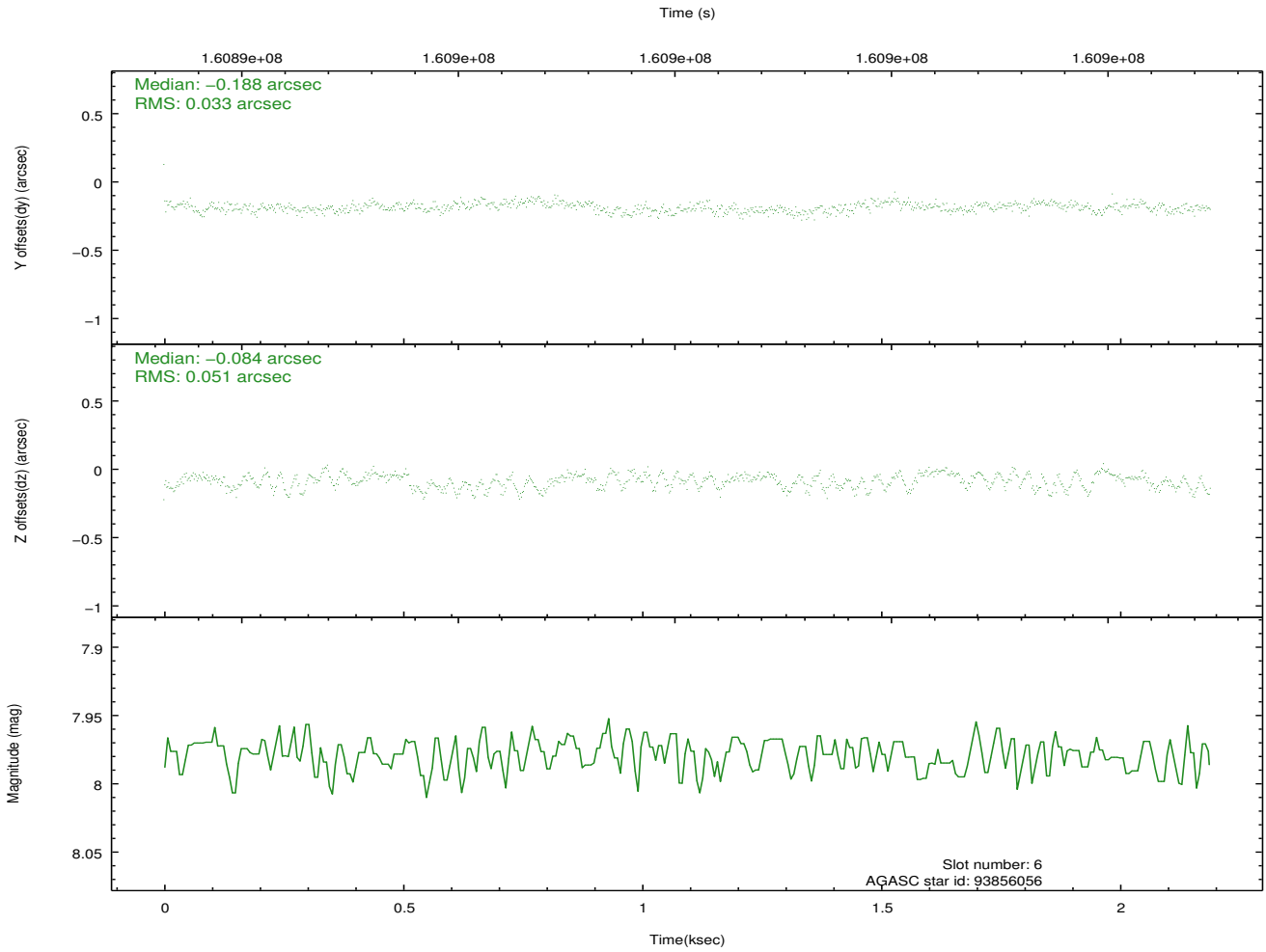
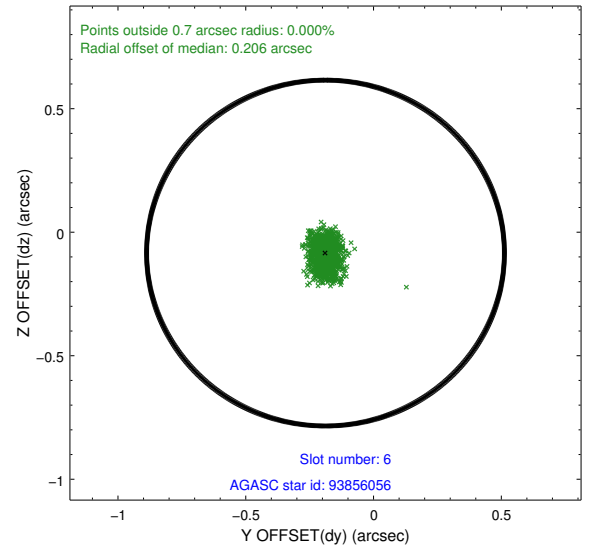
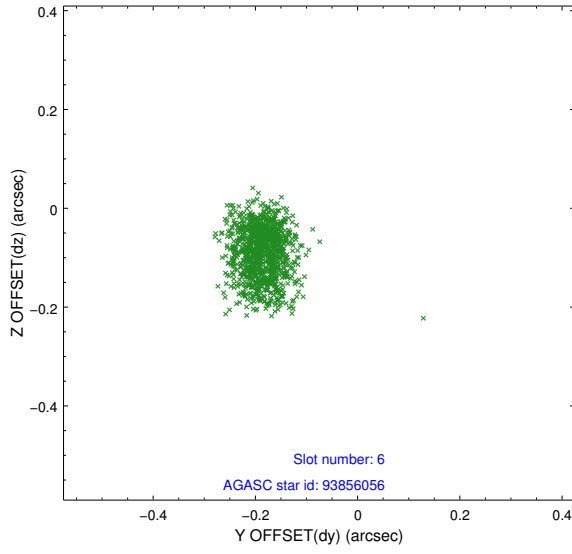
## 2.4.2 Slot 4



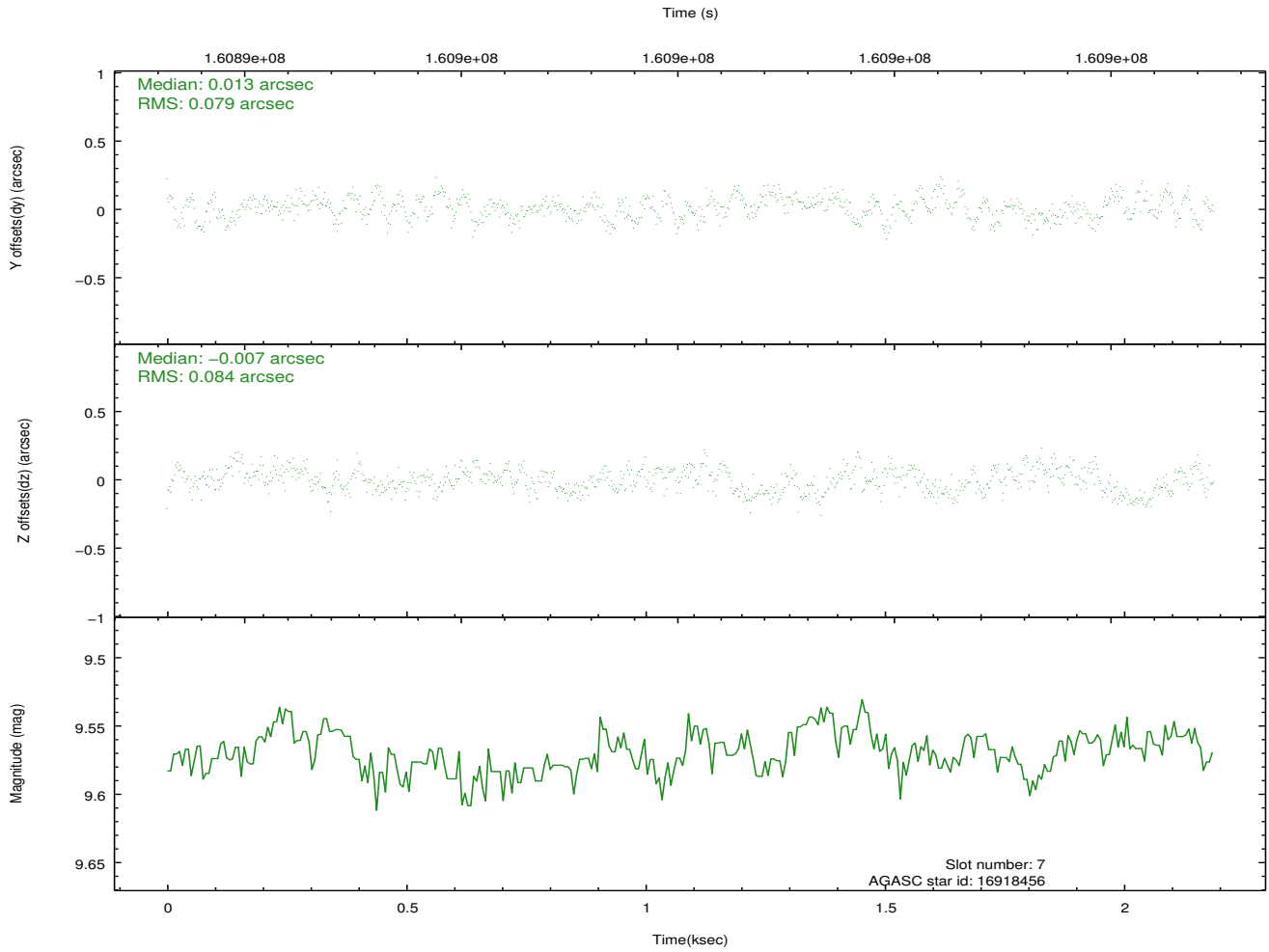
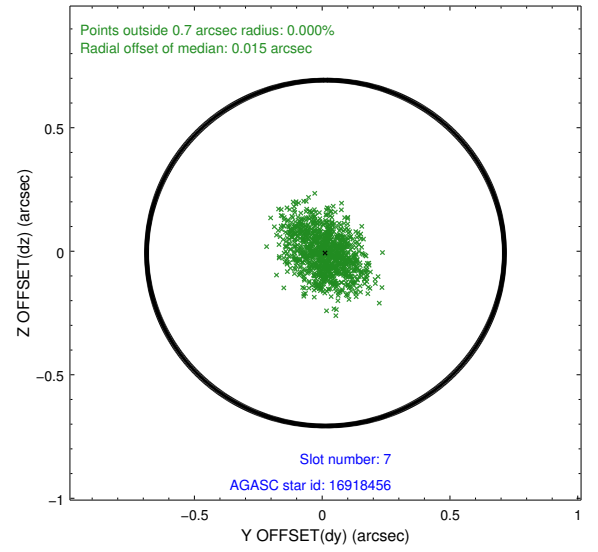
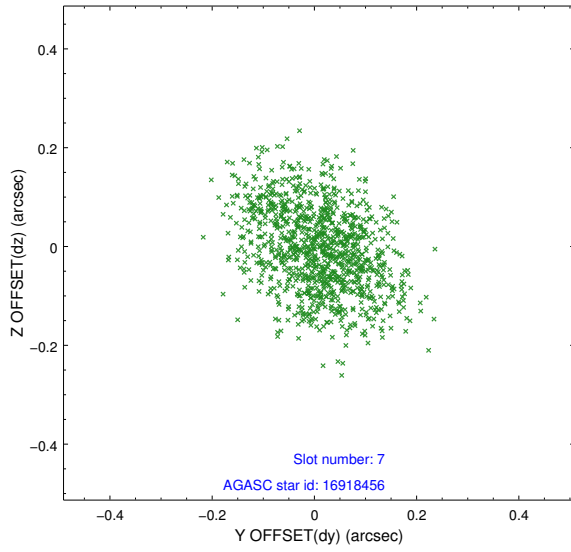
### 2.4.3 Slot 5



## 2.4.4 Slot 6

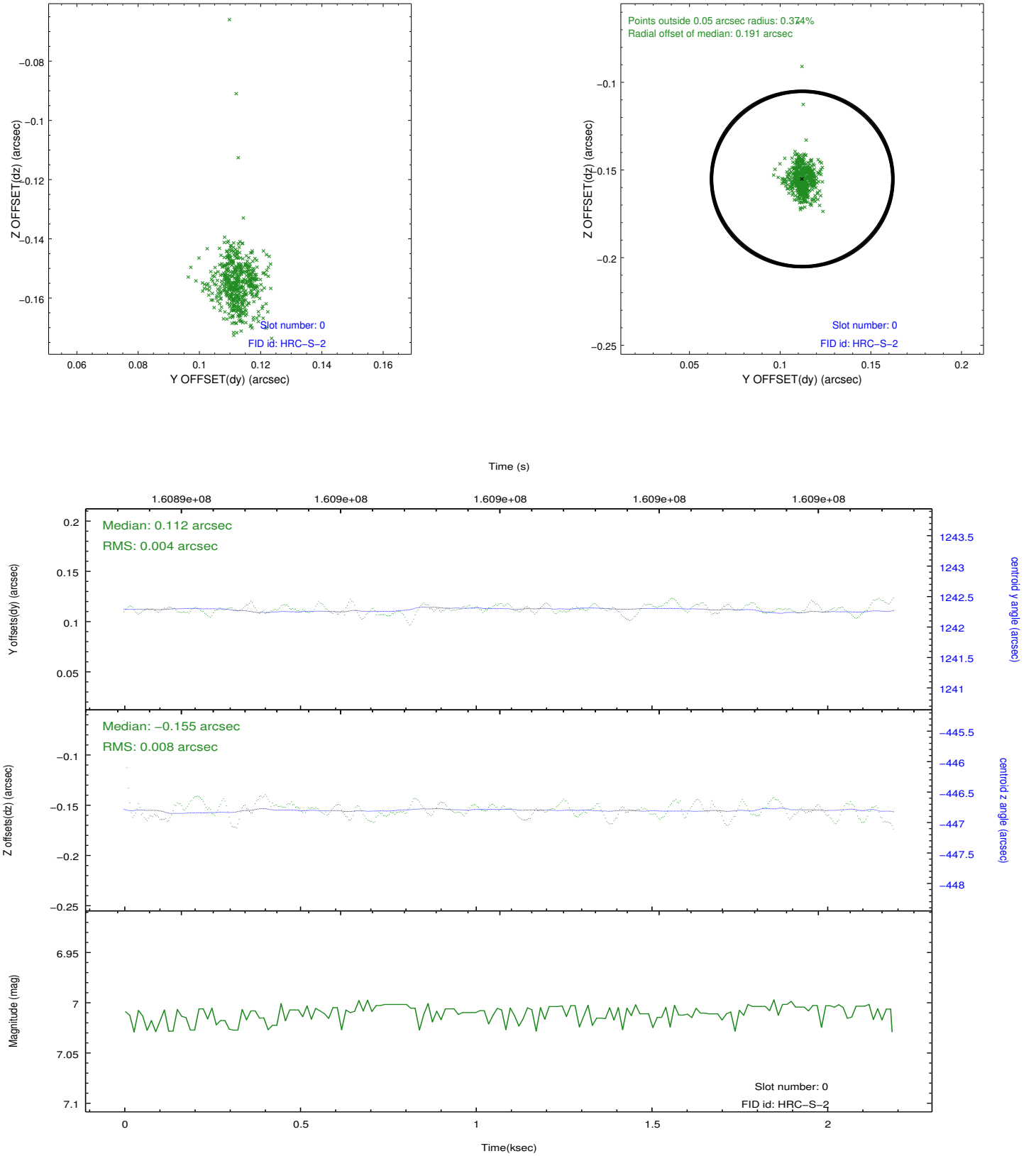


## 2.4.5 Slot 7

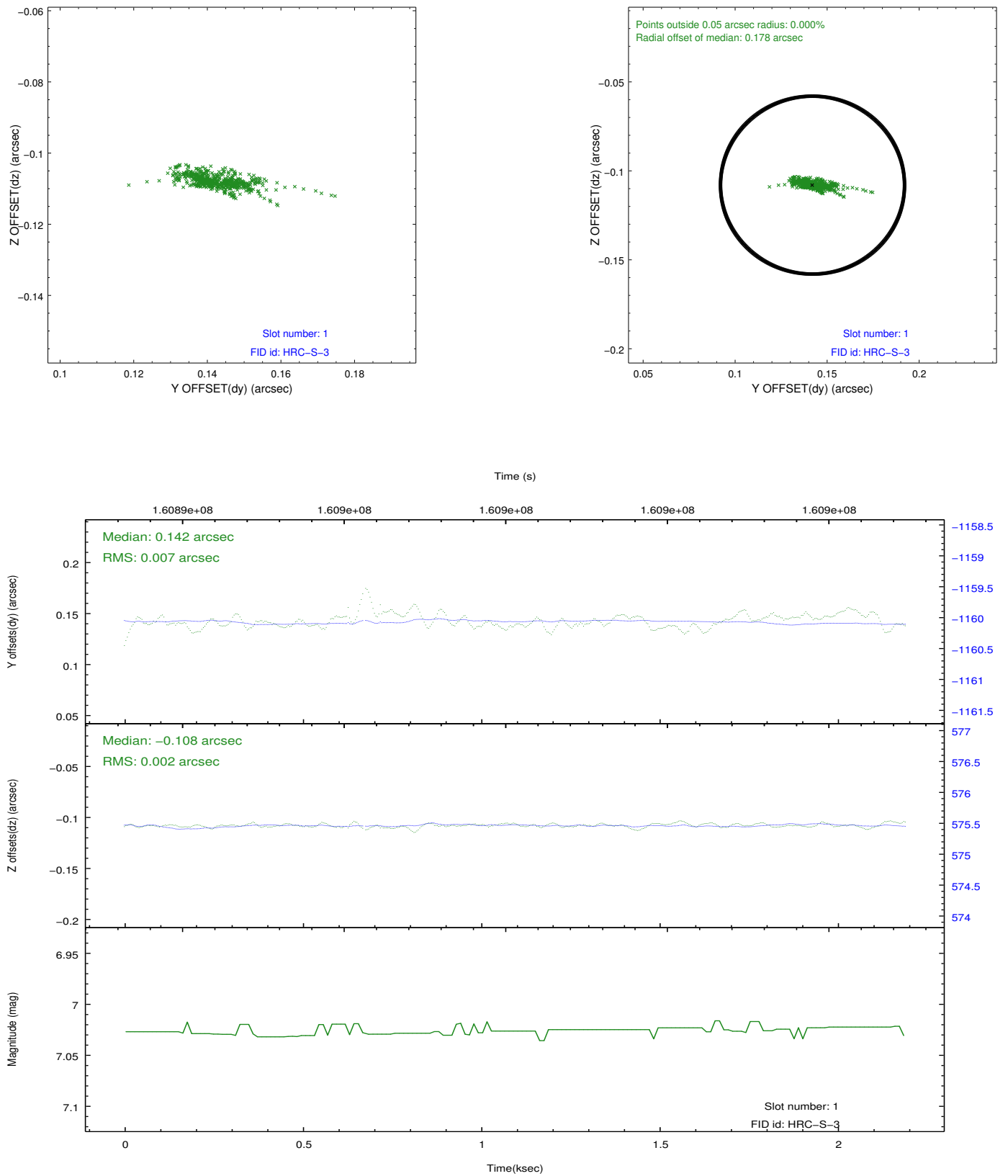


## 2.5 FID Slots

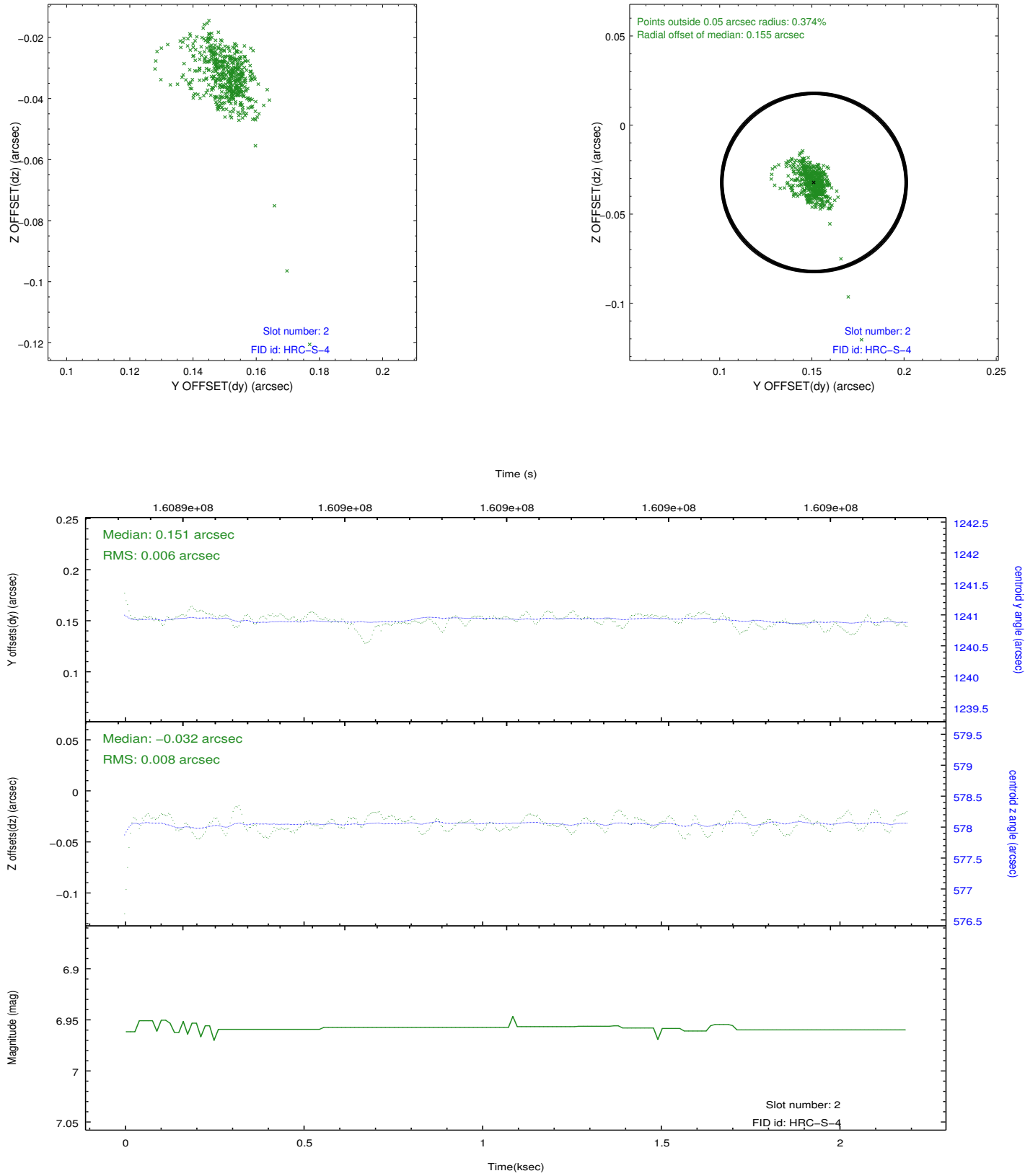
### 2.5.1 Slot 0



## 2.5.2 Slot 1



### 2.5.3 Slot 2



## A Summary

### A.1 Status

V&V Scientist	Jen Lauer
V&V Date (YYYY-MM-DD)	2012.11.05
V&V Edition	1
V&V Disposition and Status	OK
V&V Charge Time	2.143

### A.2 Comments

Window constraint satisfied.