

V&V Reference Report

L2 ASCDS Version : 7.6.8

Observation 3633 - L2 Version 001
Chandra X-Ray Center

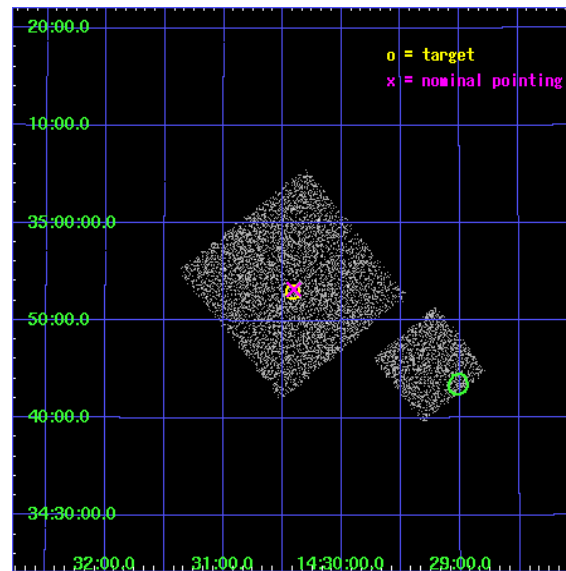
L2 Processing Date : Jul 29 2006

Contents

1	Front	2
2	OBI	3
2.1	OBI	3
2.1.1	Images	3
2.1.2	Bias	3
2.1.3	Parameters	4
2.1.4	Events	4
2.2	Compared Parameters	5
2.3	Aspect	6
2.4	Star Slots	9
2.4.1	Slot 3	9
2.4.2	Slot 4	10
2.4.3	Slot 5	11
2.4.4	Slot 6	12
2.4.5	Slot 7	13
2.5	FID Slots	14
2.5.1	Slot 0	14
2.5.2	Slot 1	15
2.5.3	Slot 2	16
3	Point Sources	17
A	Summary	18
A.1	Status	18
A.2	Comments	18

1 Front

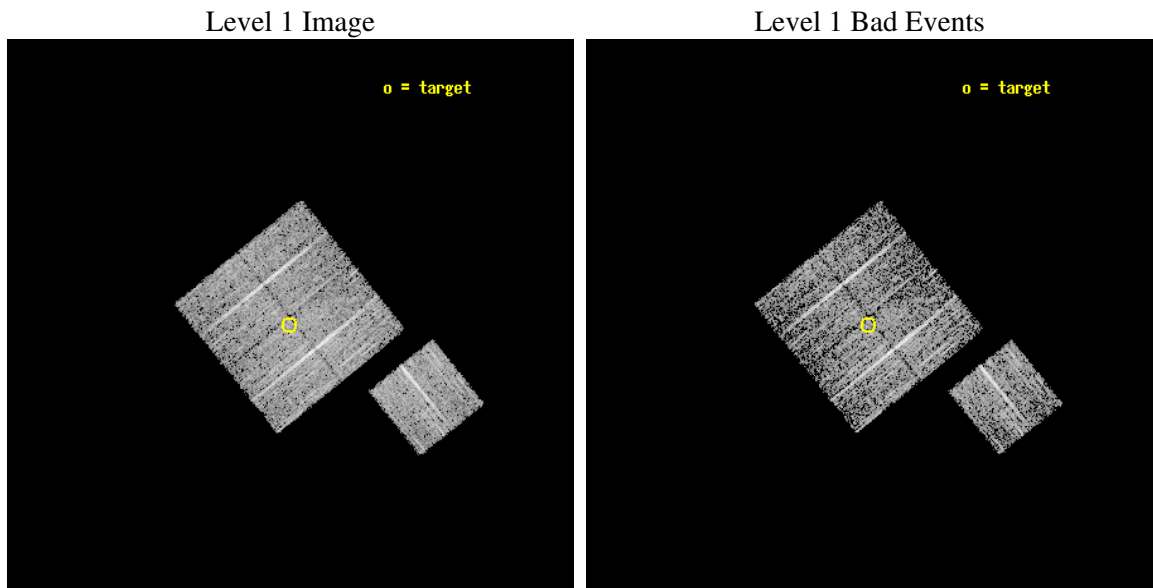
seq_num	900233
obs_id	3633
title	CHANDRA LARGE SCALE SURVEY OF THE NOAO BOOTES DEEP FIELD
observer	Dr. Stephen Murray
object	NOAO FIELD F29
dtcycle	0
cycle	P
ra_targ	217.604097
dec_targ	34.882776
ra_nom	217.60142249776
dec_nom	34.88692766605
roll_nom	141.01030898771
revision	2
ontime	4811.1999907494
livetime	4748.3381209163
ontime0	4811.1999907494
ontime1	4811.1999907494
ontime2	4811.1999907494
ontime3	4811.1999907494
ontime6	4811.1999907494
l2events	9541



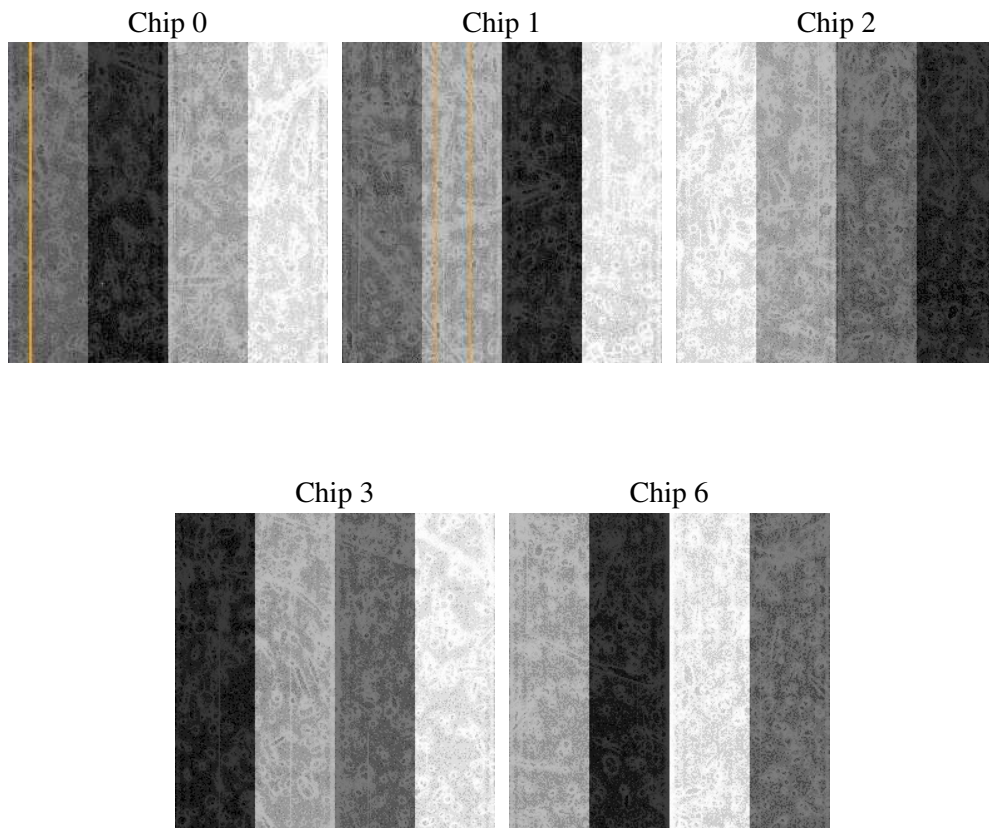
2 OBI

2.1 OBI

2.1.1 Images



2.1.2 Bias



2.1.3 Parameters

obi_num	1
ascdsver	7.6.8
caldbver	3.2.2
date	2006-07-29T20:19:25
revision	2

sched_exp_time	4900.000000
ontime	4815.1582731903
ontime0	4815.1582532823
ontime1	4815.1582532823
ontime2	4815.1582731903
ontime3	4815.1582731903
ontime6	4815.1582731903
l1events	116617

2.1.4 Events

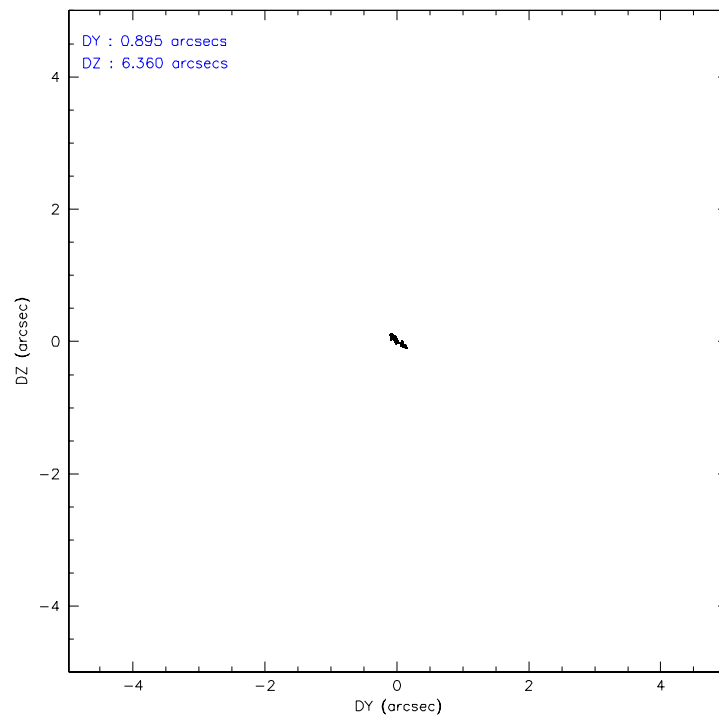
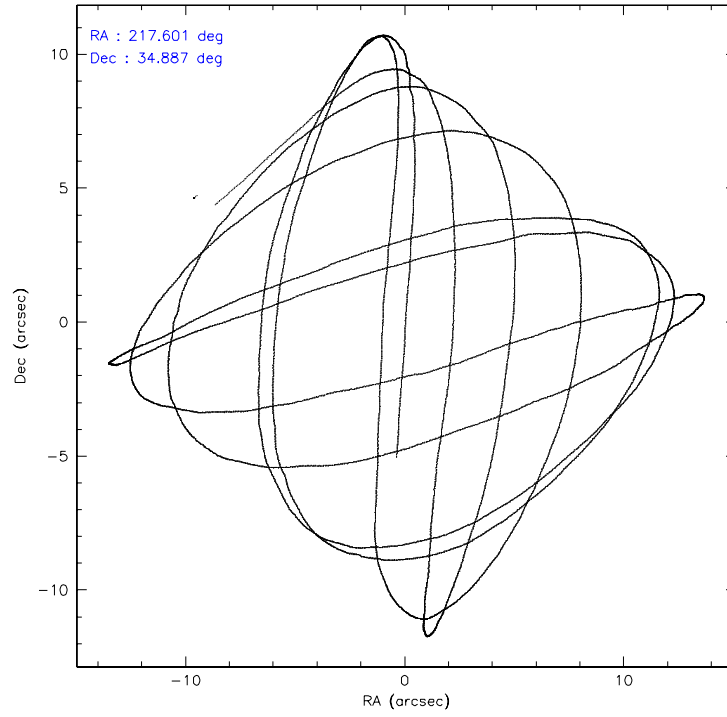
	ccd 0	ccd 1	ccd 2	ccd 3	ccd 6
level 1 events	20967	21539	24411	24586	25114
rejected events	18643	19106	22103	22355	22824
rejected %	88%	88%	90%	90%	90%

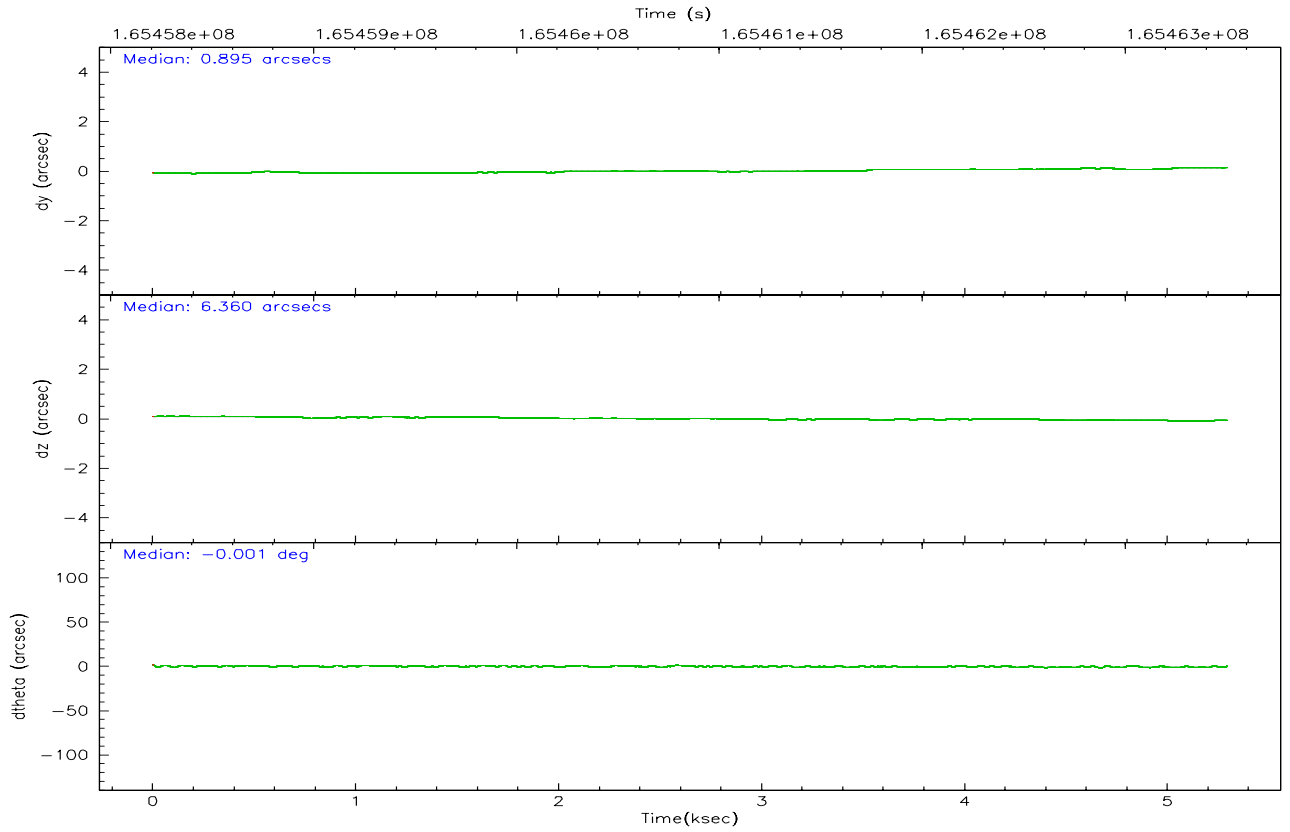
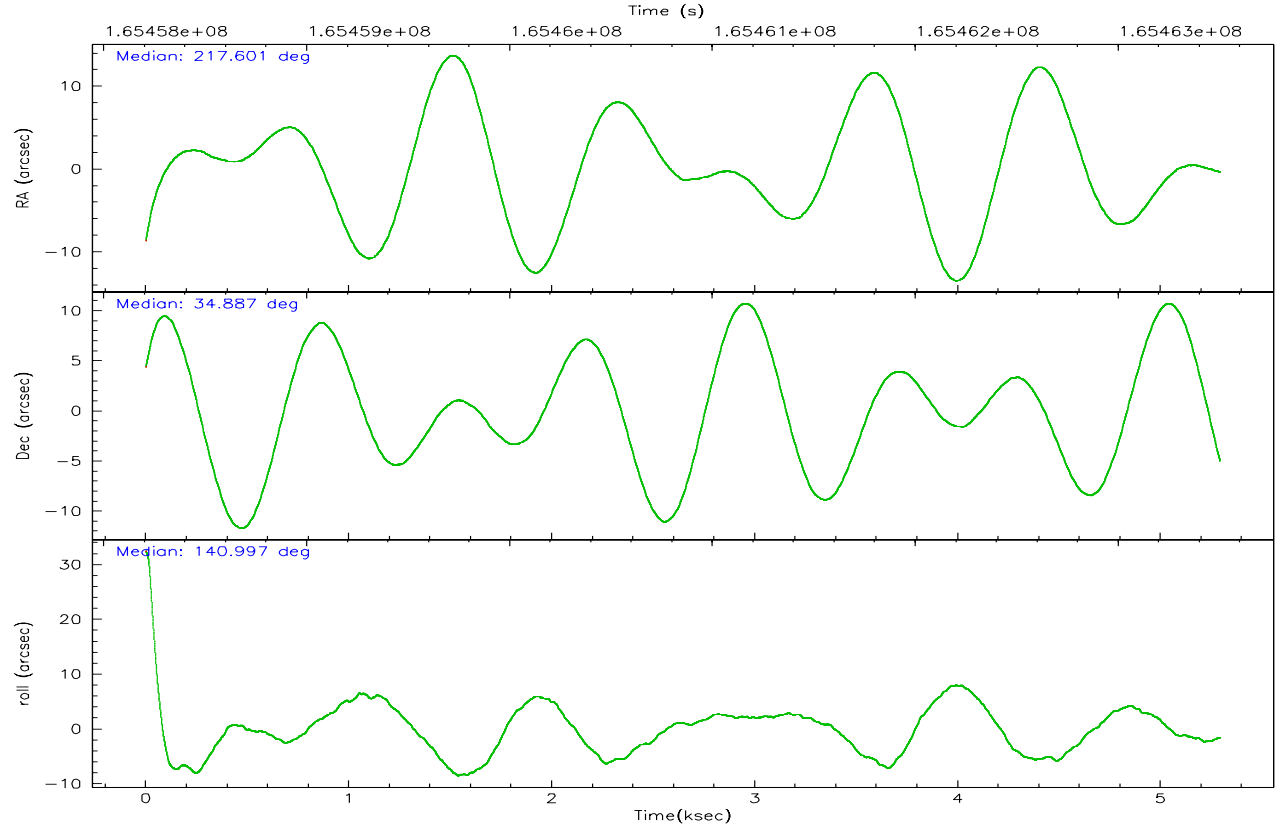
	ccd 0	ccd 1	ccd 2	ccd 3	ccd 6
grade 0 events	802	874	887	811	844
	3%	4%	3%	3%	3%
grade 1 events	17	10	11	7	10
	0%	0%	0%	0%	0%
grade 2 events	554	512	509	441	459
	2%	2%	2%	1%	1%
grade 3 events	255	293	238	289	275
	1%	1%	0%	1%	1%
grade 4 events	268	270	284	245	270
	1%	1%	1%	0%	1%
grade 5 events	666	769	606	802	750
	3%	3%	2%	3%	2%
grade 6 events	445	485	391	445	442
	2%	2%	1%	1%	1%
grade 7 events	17960	18326	21485	21546	22064
	85%	85%	88%	87%	87%

2.2 Compared Parameters

Parameter	Planned	Actual	Parameter	Planned	Actual
Instrument	ACIS	ACIS	Obspar format version number	6	6
Detector	ACIS-01236	ACIS-01236	Obspar file type	PREDICTED	ACTUAL
Grating	NONE	NONE	Obspar update status	NONE	UPDATED
Data mode	VFAINT	VFAINT	On-chip summing requested	N	N
Observation mode	POINTING	POINTING	Subarray requested	NONE	NONE
Pointing RA	217.634427	217.6014224977602	Alternating exposures requested	N	N
Pointing Dec	34.882694	34.88692766605037	Primary exposure time	0.000000	3.1
Pointing Roll	140.782652	141.0103089877104			
SIM focus pos (mm)	-0.782348	-0.7809083437167272			
SIM defocus (mm)	0	0.001439871863259334			
SIM translation stage pos (mm)	-233.592463	-233.5874344608287			
SIM translation stage offset (mm)	0	-0.005018542100998502			
Observation start time	165458604.184000	165457538.70276			
Observation start date	2003-03-31T00:42:20	2003-03-31T00:25:38			
Observation end time	165463504.184000	165463637.96552			
Observation end date	2003-03-31T02:04:00	2003-03-31T02:07:17			
Read mode	TIMED	TIMED			

2.3 Aspect



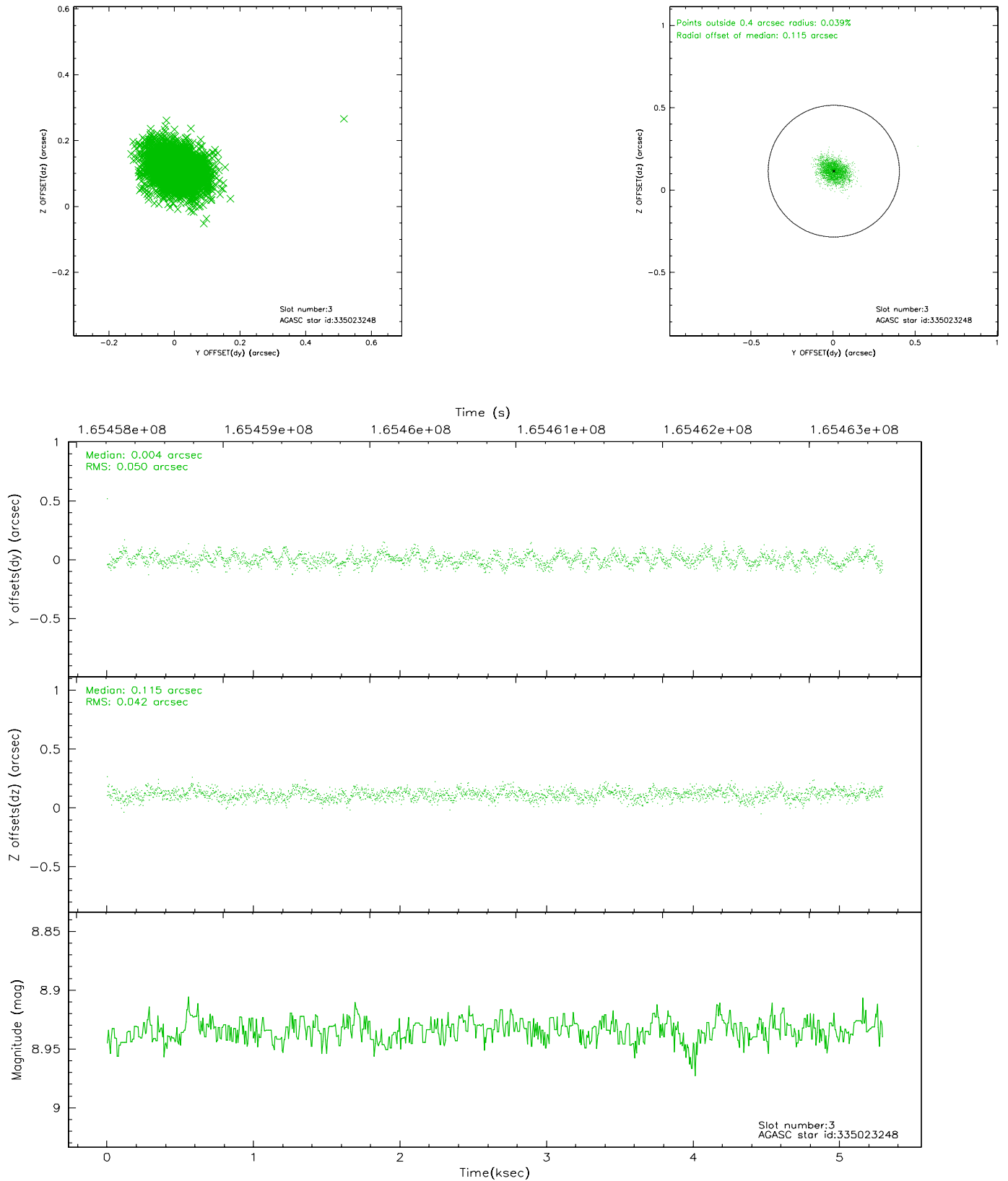


Slot Statistics

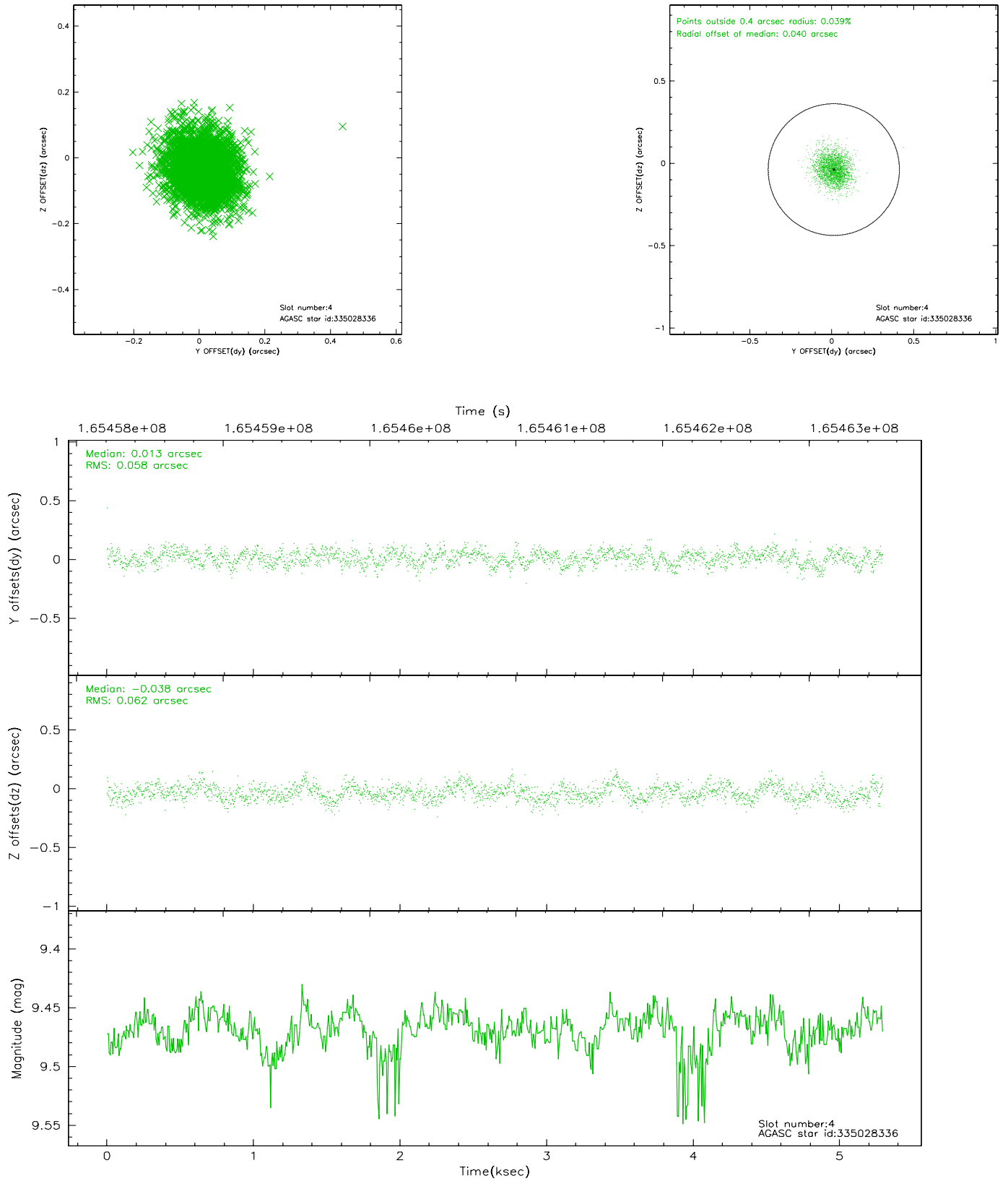
slot	status	id	mag	n_pts	med_dy	med_dz	dr1	dr2	ra	dec	mean_y	mean_z
0	FID	ACIS-I-1	7.25	1292	-0.017	0.033	0.006	0.010	0.000000	0.000000	938.91	-829.73
1	FID	ACIS-I-5	7.23	1291	-0.049	0.037	0.006	0.010	0.000000	0.000000	-1808.55	1067.25
2	FID	ACIS-I-6	7.26	1292	-0.025	0.000	0.007	0.012	0.000000	0.000000	403.27	1712.97
3	GUIDE	335023248	8.93	2582	0.004	0.115	0.068	0.111	217.634832	34.944512	139.77	-172.94
4	GUIDE	335028336	9.47	2580	0.013	-0.038	0.091	0.147	217.189840	34.665629	527.34	1435.58
5	GUIDE	335030384	8.84	2583	-0.072	-0.084	0.073	0.119	216.806407	34.722197	1538.91	1989.82
6	GUIDE	335417968	9.39	2582	0.096	-0.105	0.091	0.144	217.358149	35.055285	1024.97	33.52
7	GUIDE	335422272	9.50	2581	-0.041	0.112	0.084	0.143	217.586135	35.522660	1567.08	-1695.10

2.4 Star Slots

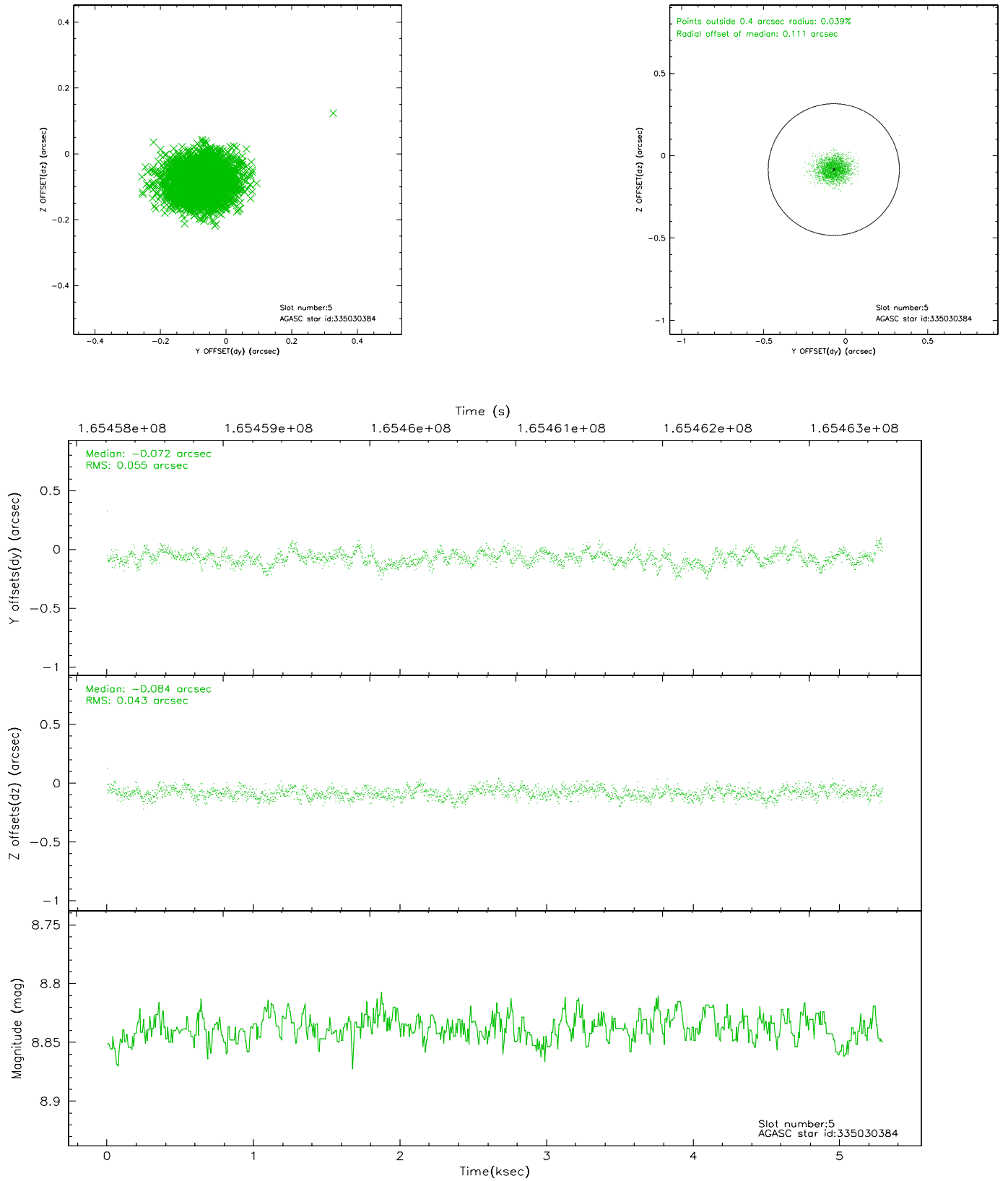
2.4.1 Slot 3



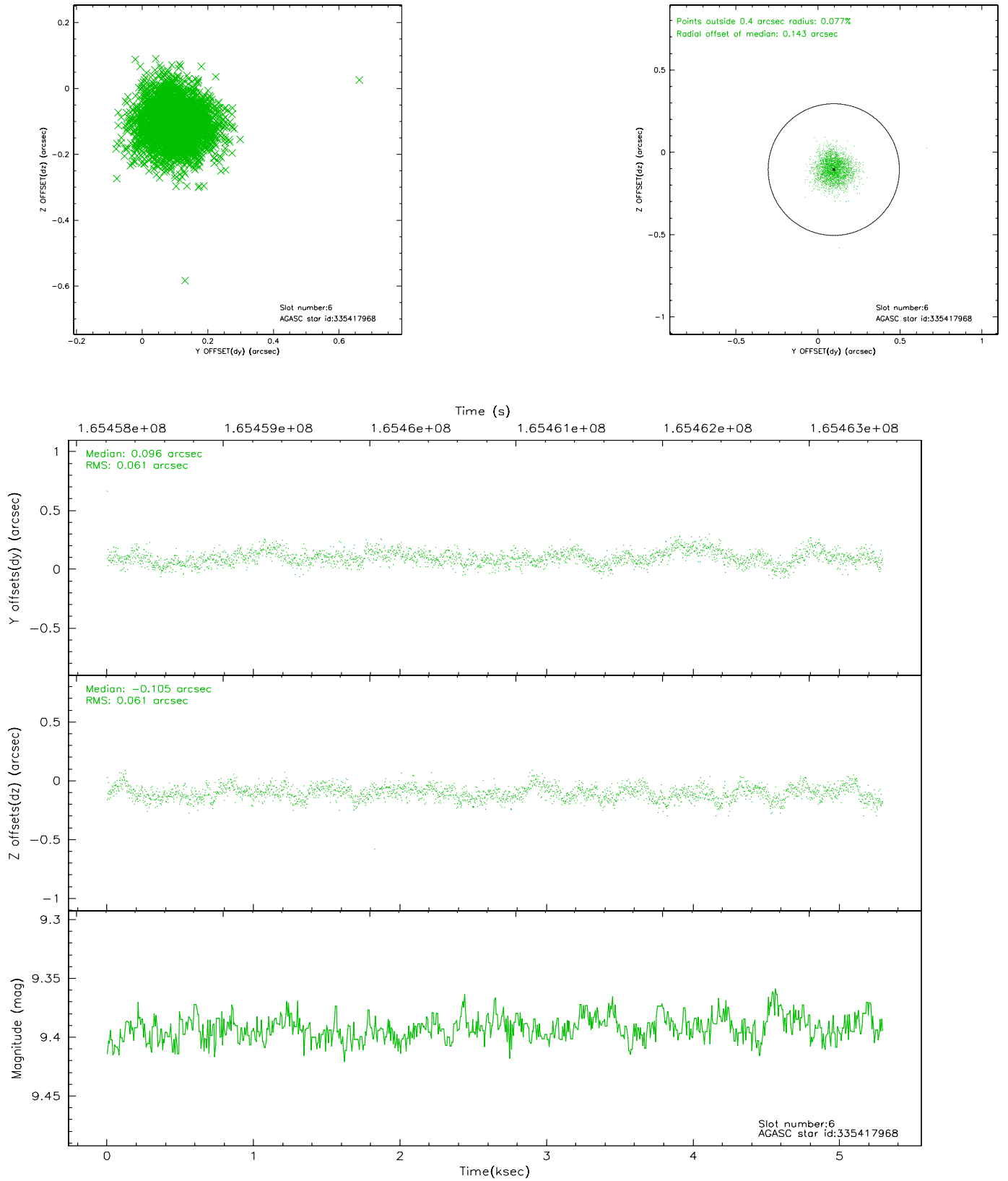
2.4.2 Slot 4



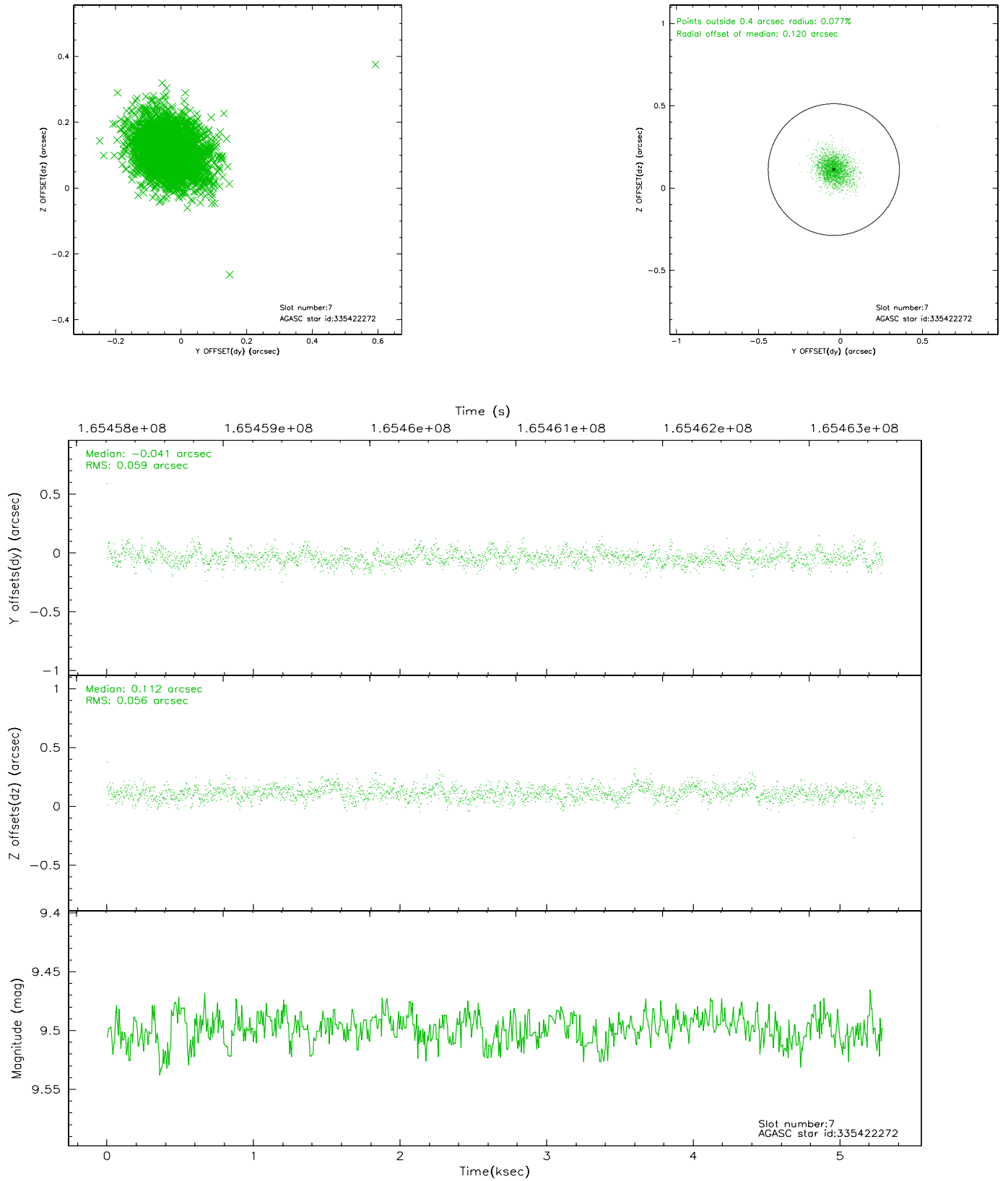
2.4.3 Slot 5



2.4.4 Slot 6

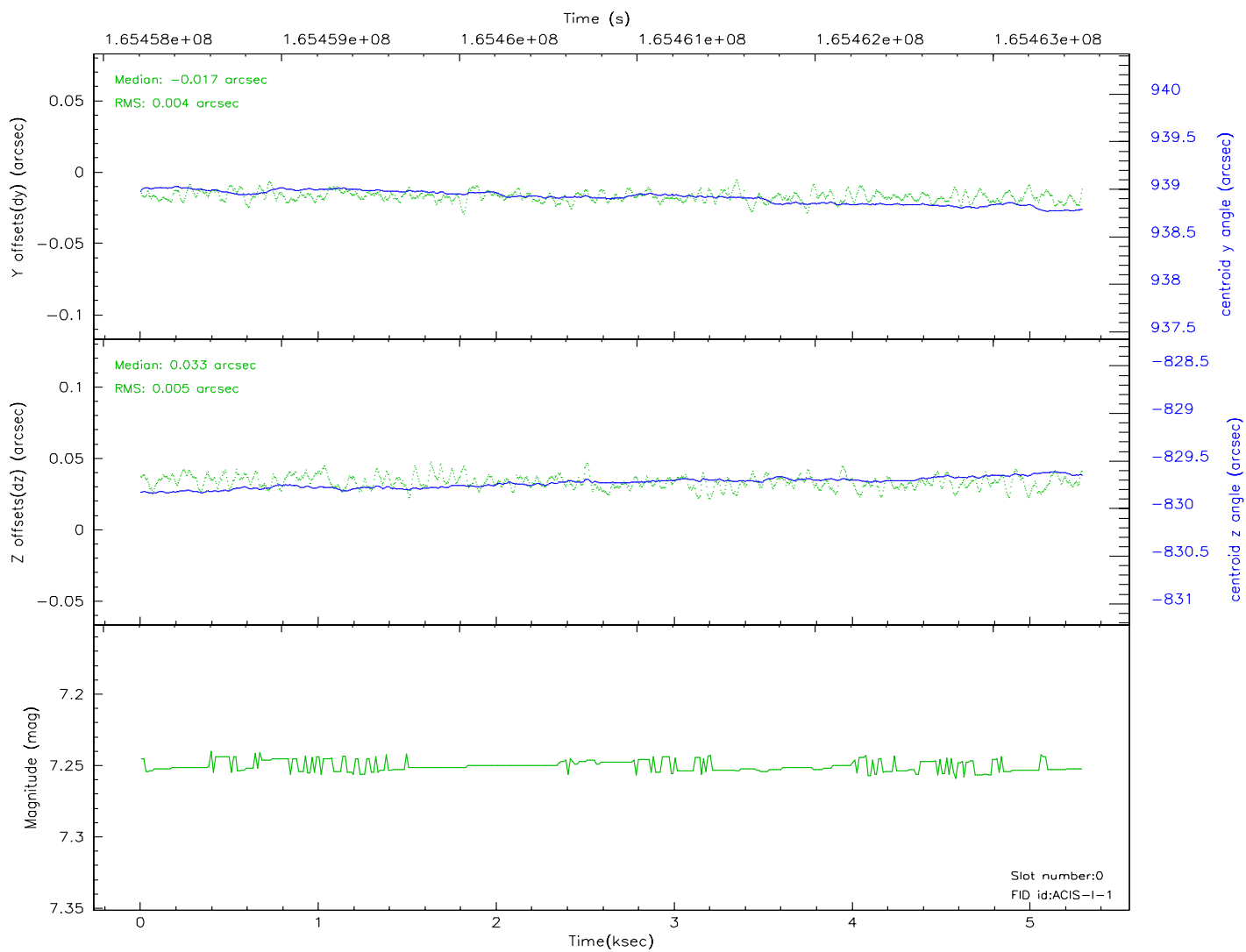
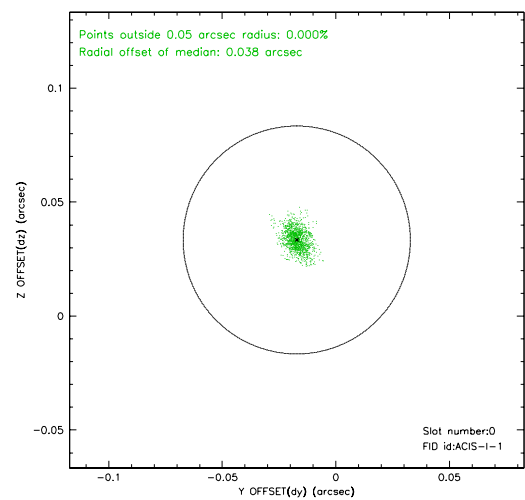
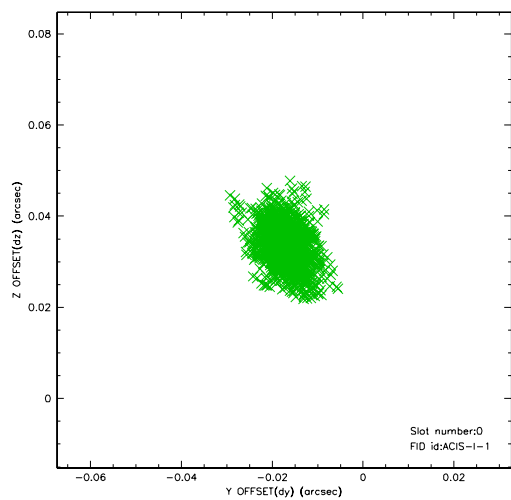


2.4.5 Slot 7

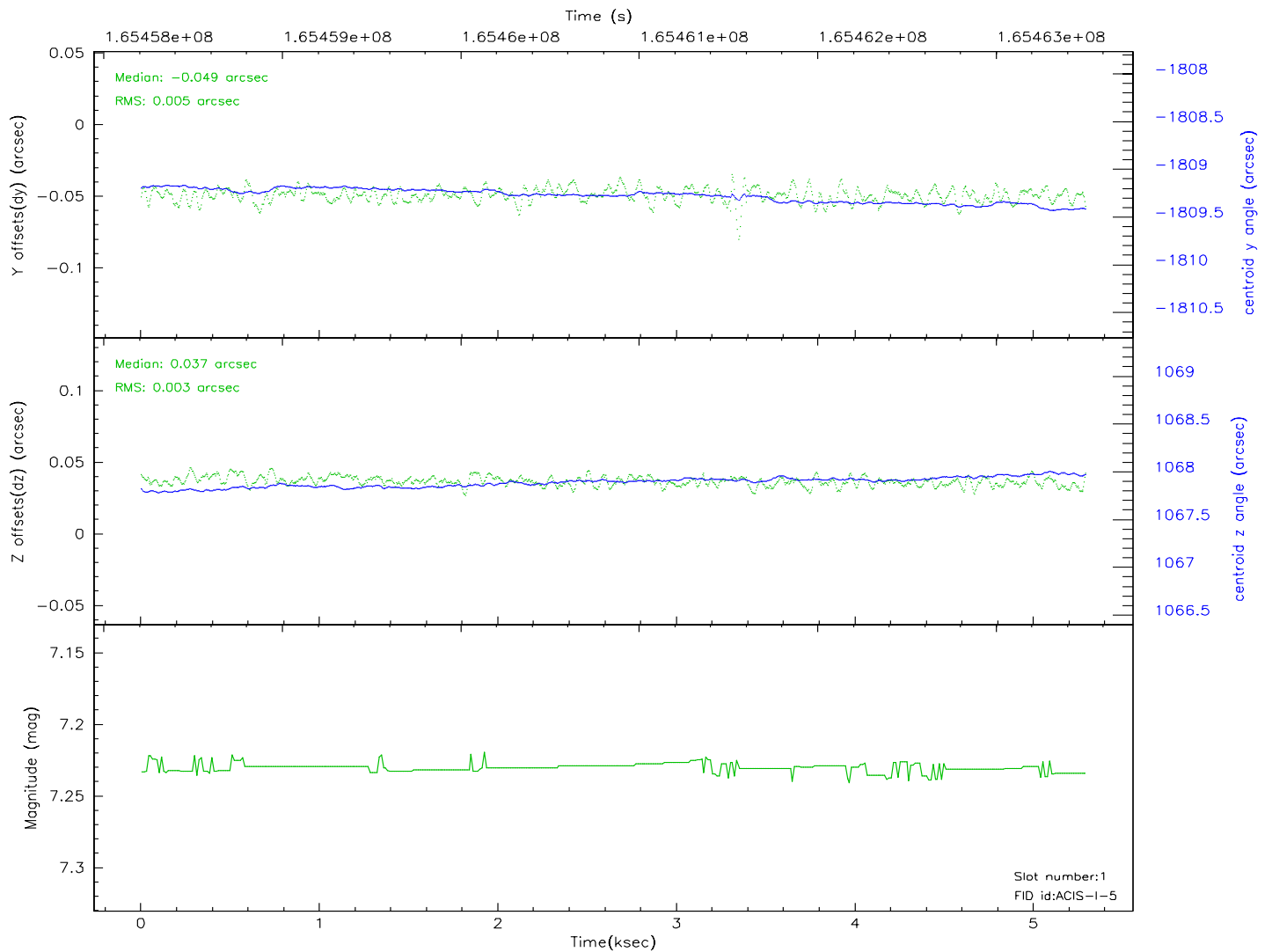
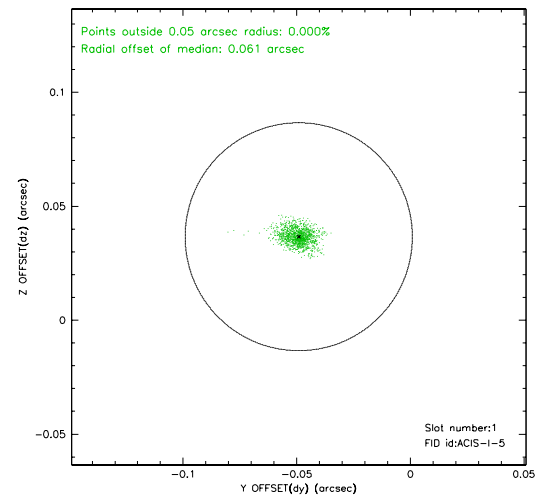
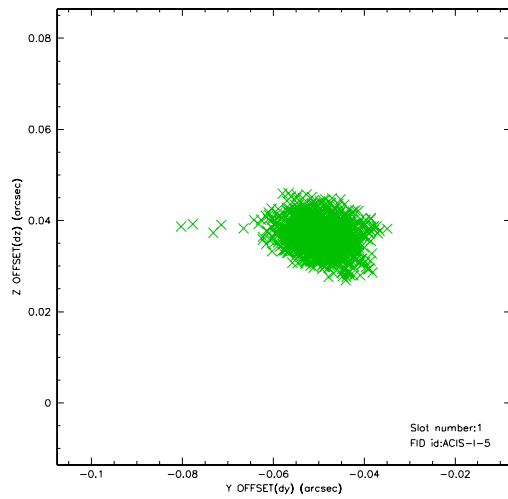


2.5 FID Slots

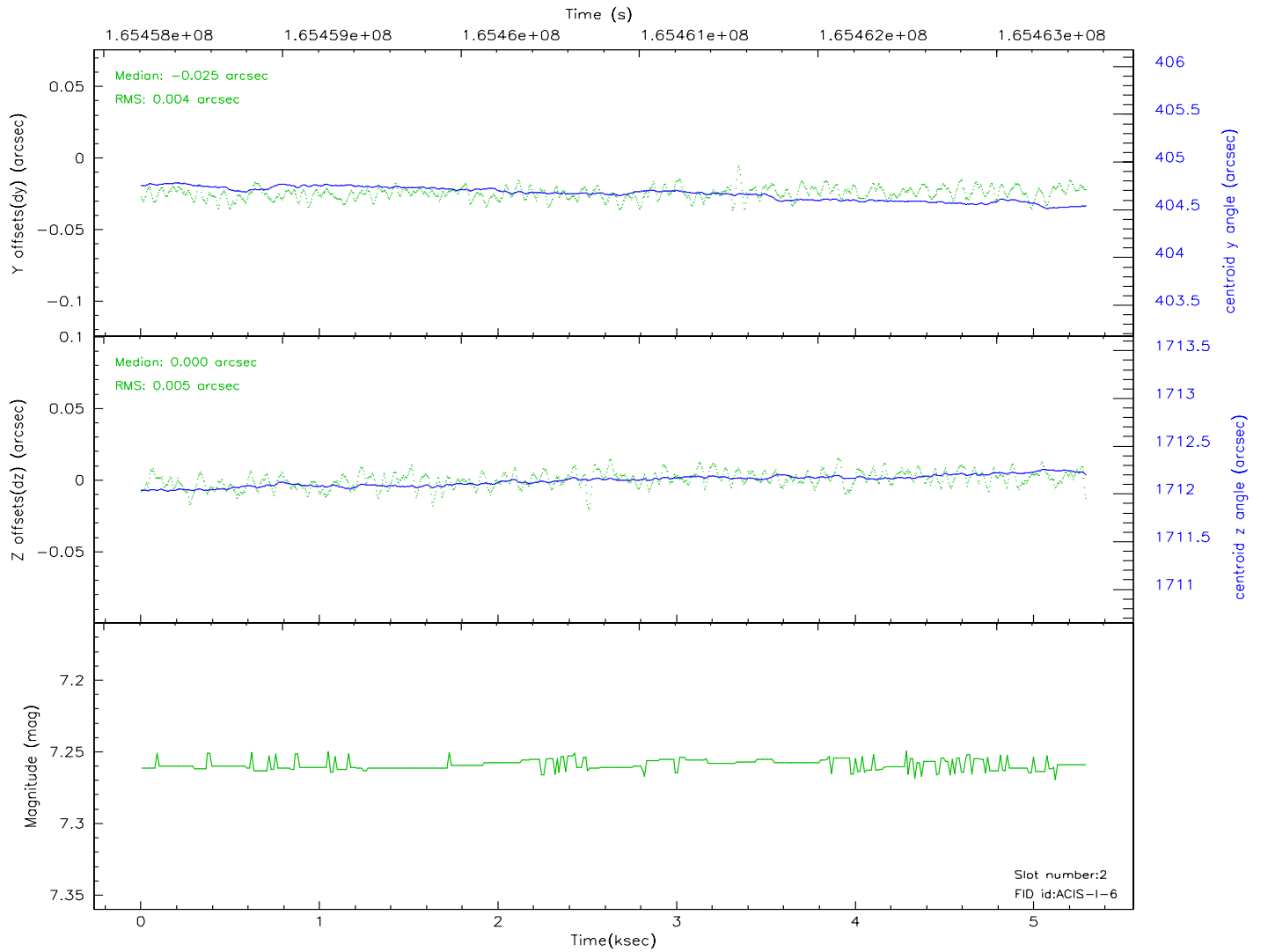
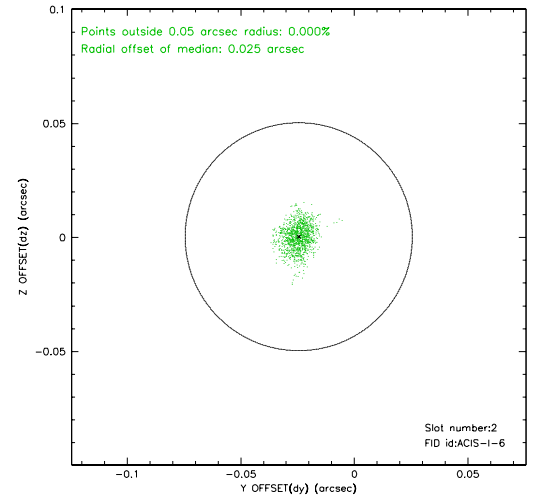
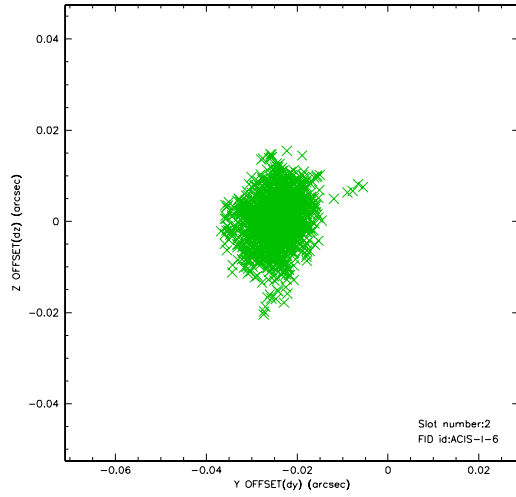
2.5.1 Slot 0



2.5.2 Slot 1



2.5.3 Slot 2



3 Point Sources

19.72 arcmin



A Summary

A.1 Status

V&V Scientist	Jen Lauer
V&V Date (YYYY-MM-DD)	2006.07.30
V&V Edition	1
V&V Disposition and Status	OK
V&V Charge Time	4.811

A.2 Comments