

# V&V Reference Report

## L2 ASCDS Version : 7.6.8

Observation 3613 - L2 Version 001  
Chandra X-Ray Center

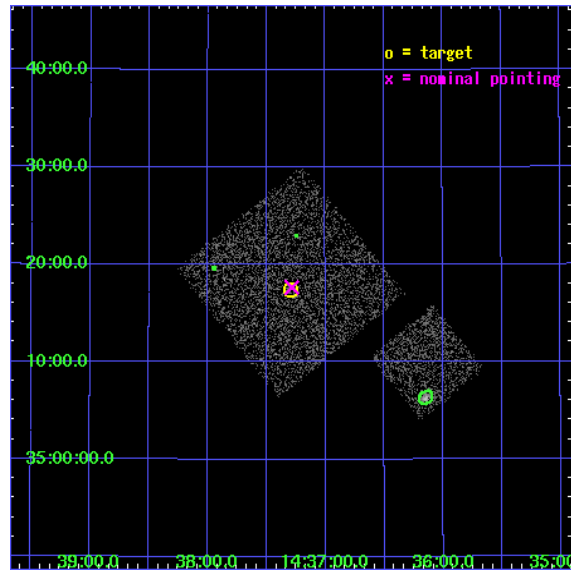
L2 Processing Date : Jul 30 2006

## Contents

<b>1</b>	<b>Front</b>	<b>2</b>
<b>2</b>	<b>OBI</b>	<b>3</b>
2.1	OBI . . . . .	3
2.1.1	Images . . . . .	3
2.1.2	Bias . . . . .	3
2.1.3	Parameters . . . . .	4
2.1.4	Events . . . . .	4
2.2	Compared Parameters . . . . .	5
2.3	Aspect . . . . .	6
2.4	Star Slots . . . . .	9
2.4.1	Slot 3 . . . . .	9
2.4.2	Slot 4 . . . . .	10
2.4.3	Slot 5 . . . . .	11
2.4.4	Slot 6 . . . . .	12
2.4.5	Slot 7 . . . . .	13
2.5	FID Slots . . . . .	14
2.5.1	Slot 0 . . . . .	14
2.5.2	Slot 1 . . . . .	15
2.5.3	Slot 2 . . . . .	16
<b>3</b>	<b>Point Sources</b>	<b>17</b>
<b>A</b>	<b>Summary</b>	<b>18</b>
A.1	Status . . . . .	18
A.2	Comments . . . . .	18

# 1 Front

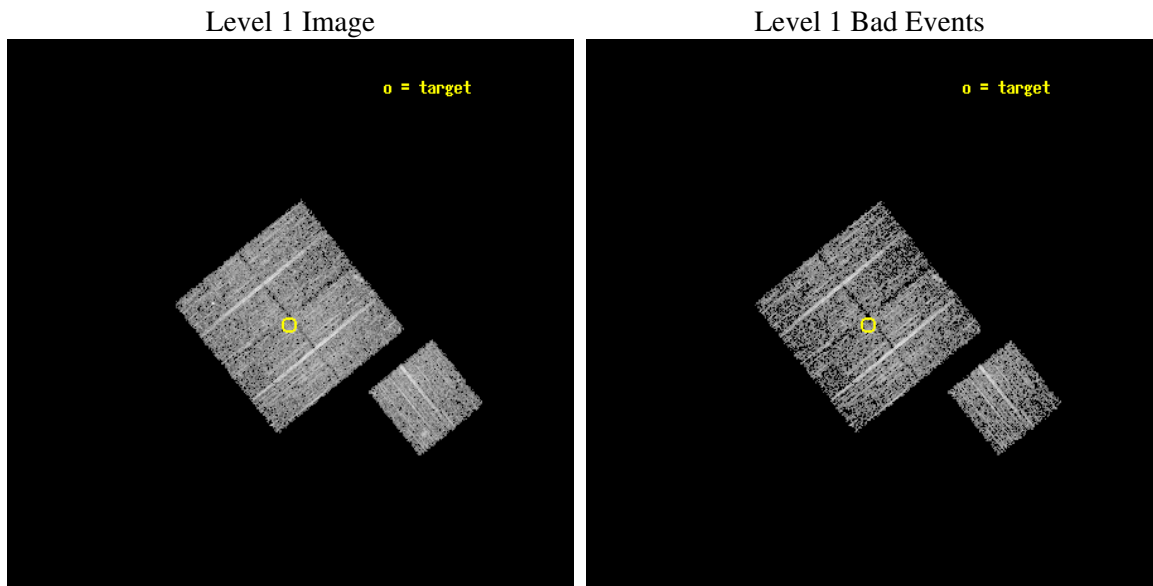
seq_num	900213
obs_id	3613
title	CHANDRA LARGE SCALE SURVEY OF THE NOAO BOOTES DEEP FIELD
observer	Dr. Stephen Murray
object	NOAO FIELD F3
dtcycle	0
cycle	P
ra_targ	219.323765
dec_targ	35.290164
ra_nom	219.32111249718
dec_nom	35.294274125723
roll_nom	141.01024004476
revision	2
ontime	4668.5180903375
livetime	4607.5204645742
ontime0	4674.7999910116
ontime1	4674.7999910116
ontime2	4674.7999910116
ontime3	4668.5180903375
ontime6	4674.7999910116
l2events	9650



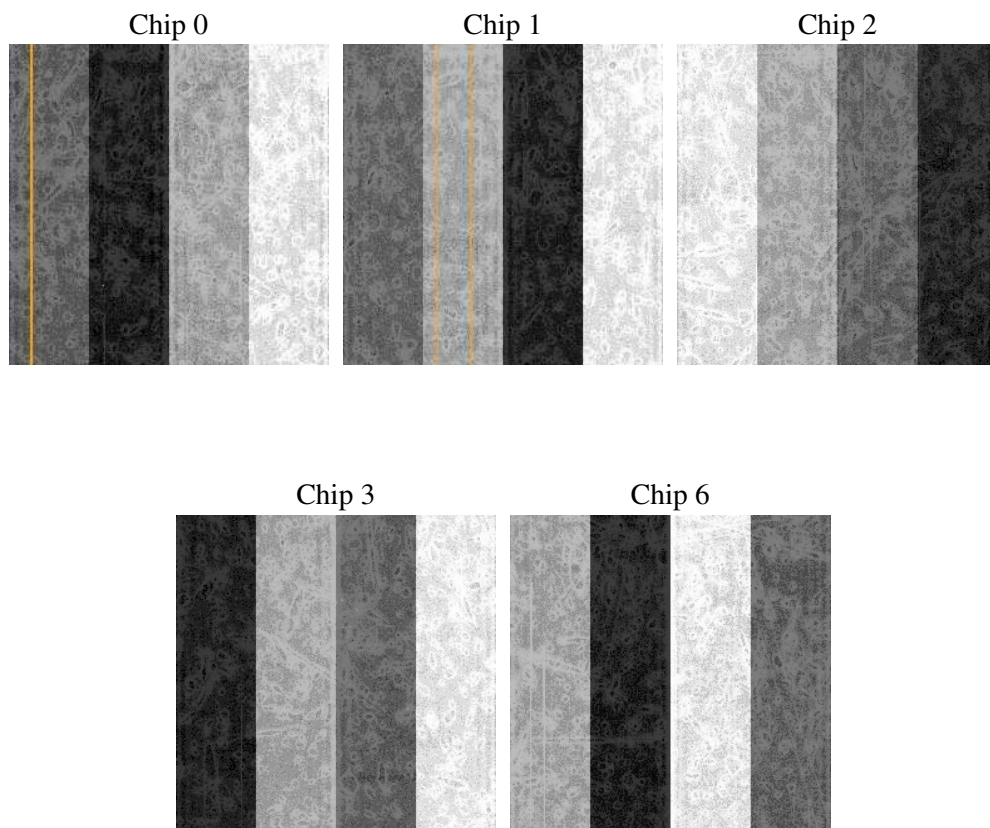
## 2 OBI

### 2.1 OBI

#### 2.1.1 Images



#### 2.1.2 Bias



### 2.1.3 Parameters

obi_num	1
ascdsver	7.6.8
caldsver	3.2.2
date	2006-07-30T05:37:09
revision	2

sched_exp_time	4900.000000
ontime	4673.8178467155
ontime0	4680.0997275114
ontime1	4680.0997473896
ontime2	4680.0997473896
ontime3	4673.8178467155
ontime6	4680.0997473896
l1events	116037

### 2.1.4 Events

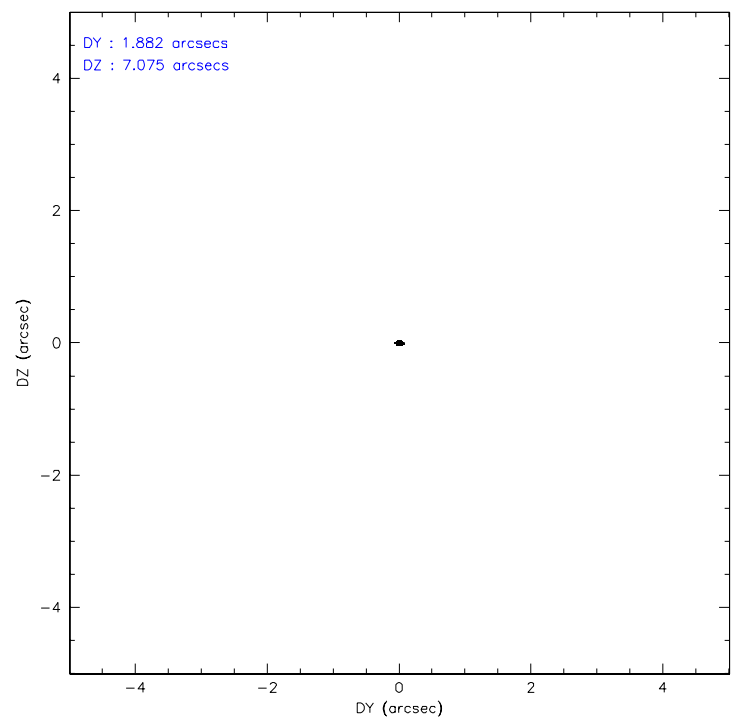
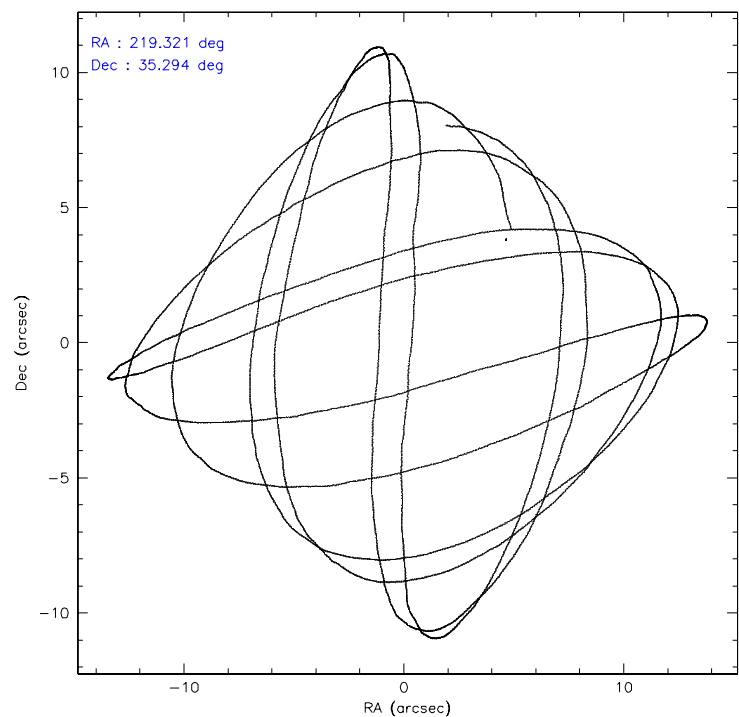
	ccd 0	ccd 1	ccd 2	ccd 3	ccd 6
level 1 events	20967	22513	24959	23750	23848
rejected events	18831	19844	22724	21555	21397
rejected %	89%	88%	91%	90%	89%

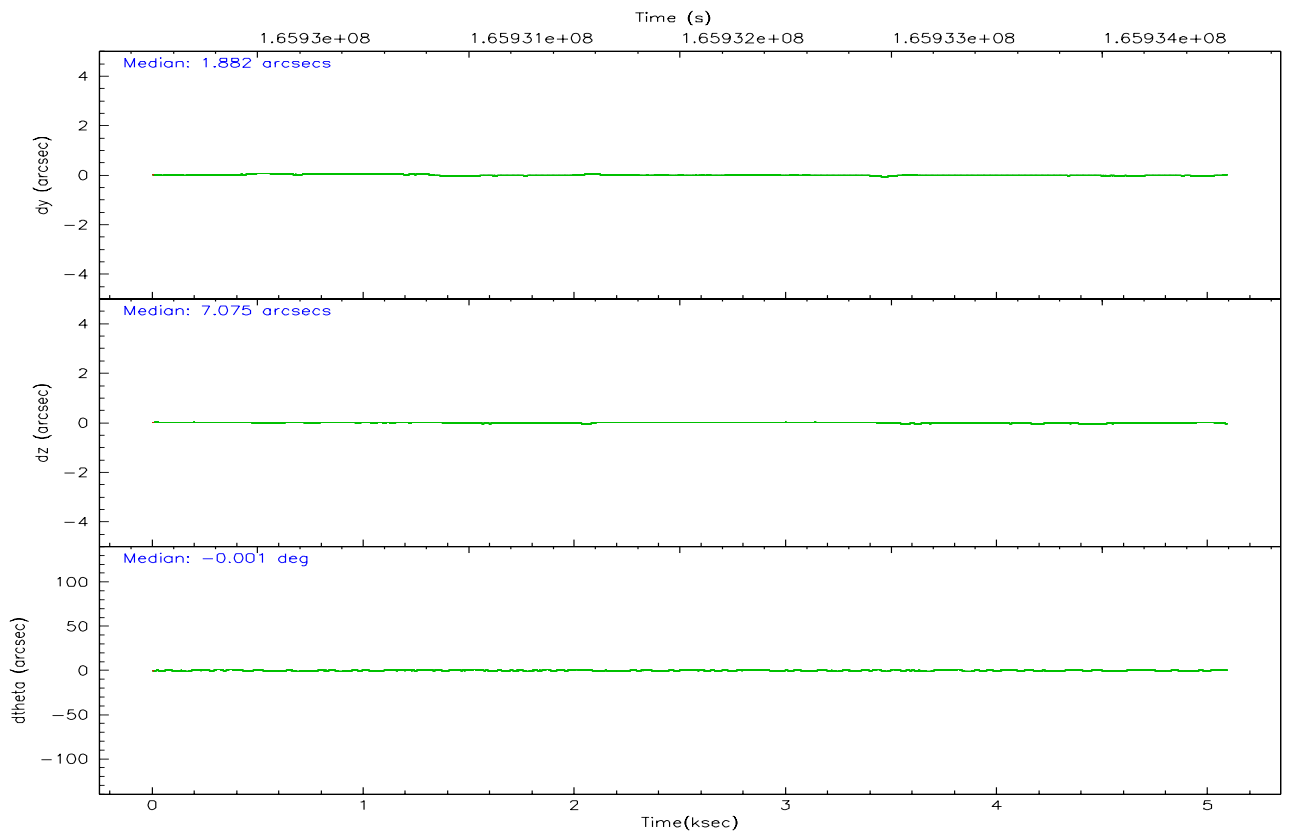
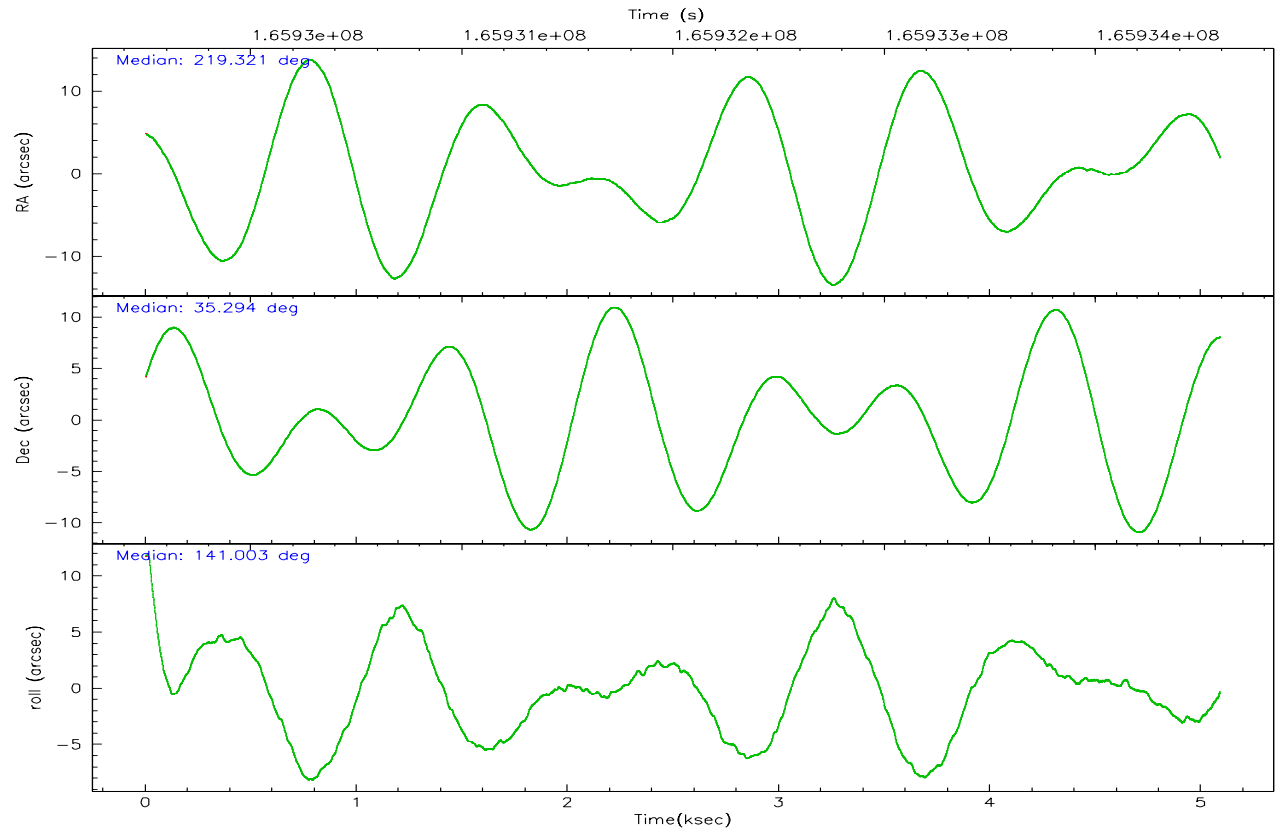
	ccd 0	ccd 1	ccd 2	ccd 3	ccd 6
grade 0 events	757	993	785	803	967
	3%	4%	3%	3%	4%
grade 1 events	7	14	13	14	9
	0%	0%	0%	0%	0%
grade 2 events	457	515	513	434	518
	2%	2%	2%	1%	2%
grade 3 events	258	315	249	272	270
	1%	1%	0%	1%	1%
grade 4 events	245	312	280	255	261
	1%	1%	1%	1%	1%
grade 5 events	645	791	632	731	768
	3%	3%	2%	3%	3%
grade 6 events	422	536	410	431	436
	2%	2%	1%	1%	1%
grade 7 events	18176	19037	22077	20810	20619
	86%	84%	88%	87%	86%

## 2.2 Compared Parameters

Parameter	Planned	Actual	Parameter	Planned	Actual
Instrument	ACIS	ACIS	Obspar format version number	6	6
Detector	ACIS-01236	ACIS-01236	Obspar file type	PREDICTED	ACTUAL
Grating	NONE	NONE	Obspar update status	NONE	UPDATED
Data mode	VFAINT	VFAINT	On-chip summing requested	N	N
Observation mode	POINTING	POINTING	Subarray requested	NONE	NONE
Pointing RA	219.354257	219.321112497181	Alternating exposures requested	N	N
Pointing Dec	35.290084	35.29427412572275	Primary exposure time	0.000000	3.1
Pointing Roll	140.782379	141.0102400447568			
SIM focus pos (mm)	-0.782348	-0.7809083437167272			
SIM defocus (mm)	0	0.001439871863259334			
SIM translation stage pos (mm)	-233.592463	-233.5874344608287			
SIM translation stage offset (mm)	0	-0.005018542100998502			
Observation start time	165929697.184000	165929320.59767			
Observation start date	2003-04-05T11:33:53	2003-04-05T11:28:40			
Observation end time	165934597.184000	165934730.5479			
Observation end date	2003-04-05T12:55:33	2003-04-05T12:58:50			
Read mode	TIMED	TIMED			

2.3 Aspect





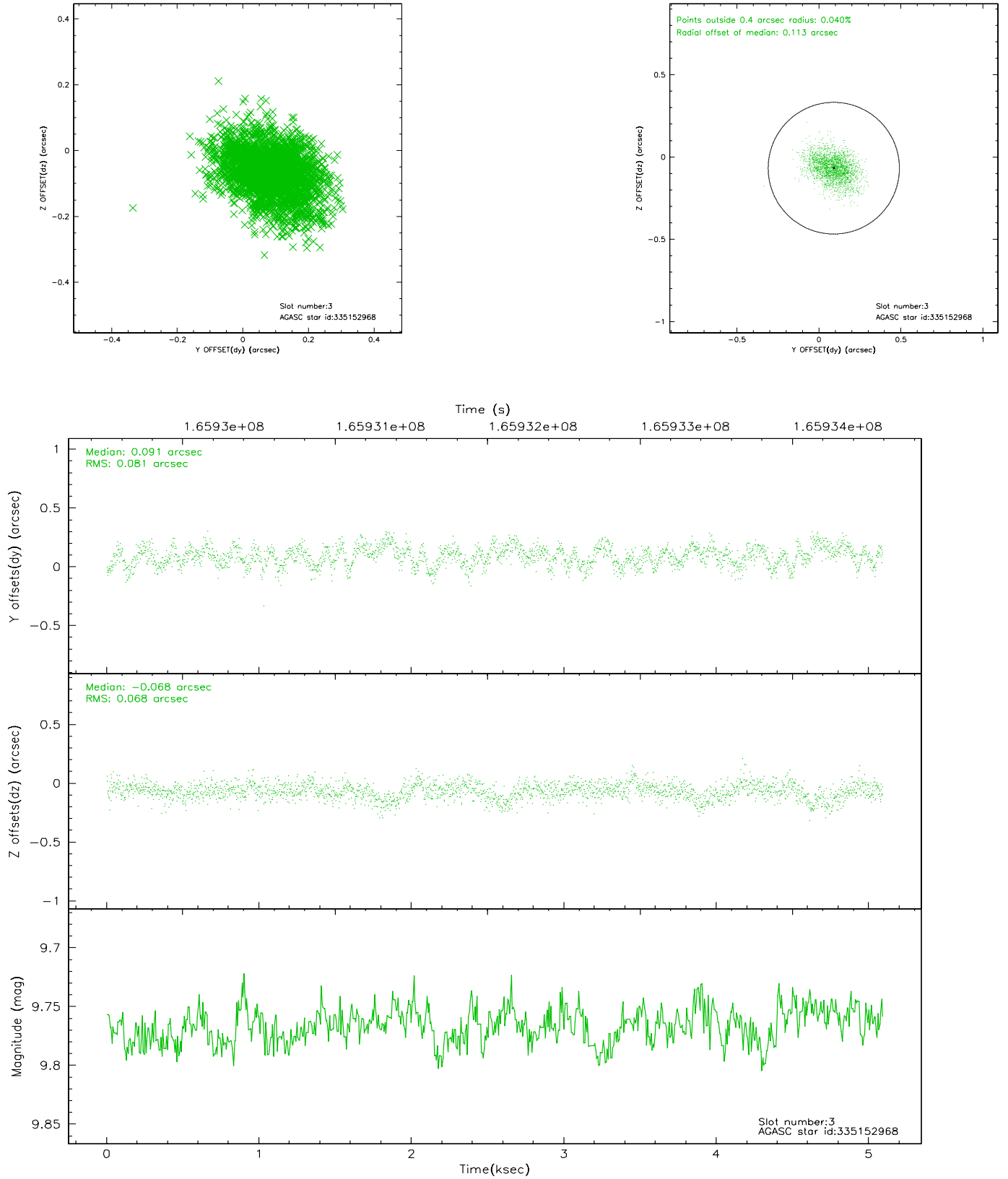
### Slot Statistics

slot	status	id	mag	n_pts	med_dy	med_dz	dr1	dr2	ra	dec	mean_y	mean_z
0	FID	ACIS-I-1	7.25	1242	-0.013	0.041	0.006	0.010	0.000000	0.000000	937.90	-830.45
1	FID	ACIS-I-5	7.23	1242	-0.043	0.045	0.006	0.010	0.000000	0.000000	-1809.52	1066.52
2	FID	ACIS-I-6	7.26	1242	-0.036	-0.016	0.006	0.010	0.000000	0.000000	402.20	1712.26
3	GUIDE	335152968	9.77	2480	0.091	-0.068	0.112	0.187	219.446087	34.867883	-1171.06	1006.19
4	GUIDE	335414336	8.96	2483	-0.149	-0.077	0.074	0.120	218.979022	35.090910	403.72	1253.51
5	GUIDE	335545712	9.87	2480	0.005	0.127	0.106	0.174	220.165930	35.199137	-2050.22	-1262.88
6	GUIDE	335546608	10.06	2480	0.106	-0.019	0.114	0.196	219.906522	35.245587	-1356.79	-906.36
7	GUIDE	335549864	7.53	2481	-0.048	0.038	0.098	0.152	219.286726	35.929745	1608.38	-1659.44

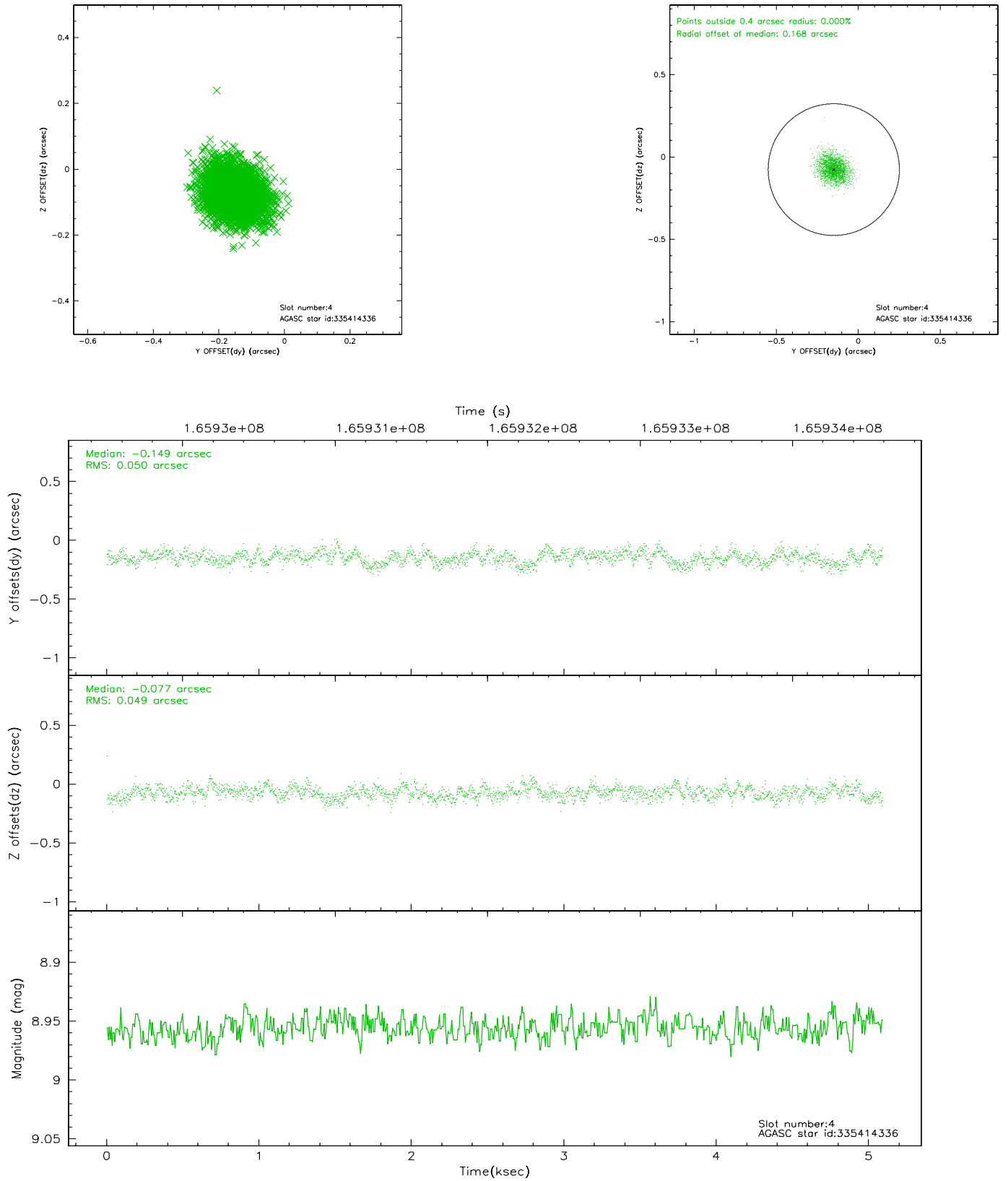


## 2.4 Star Slots

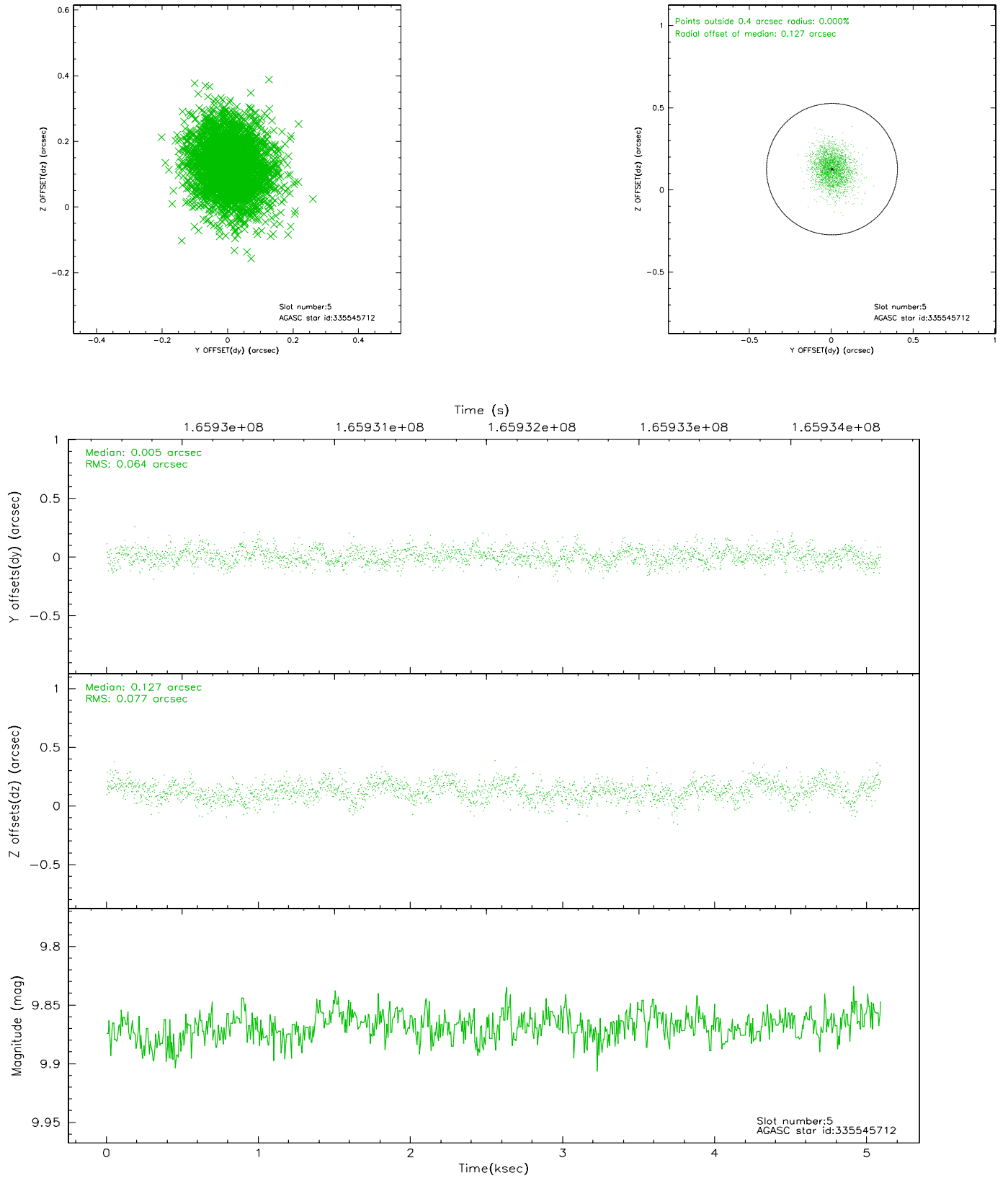
### 2.4.1 Slot 3



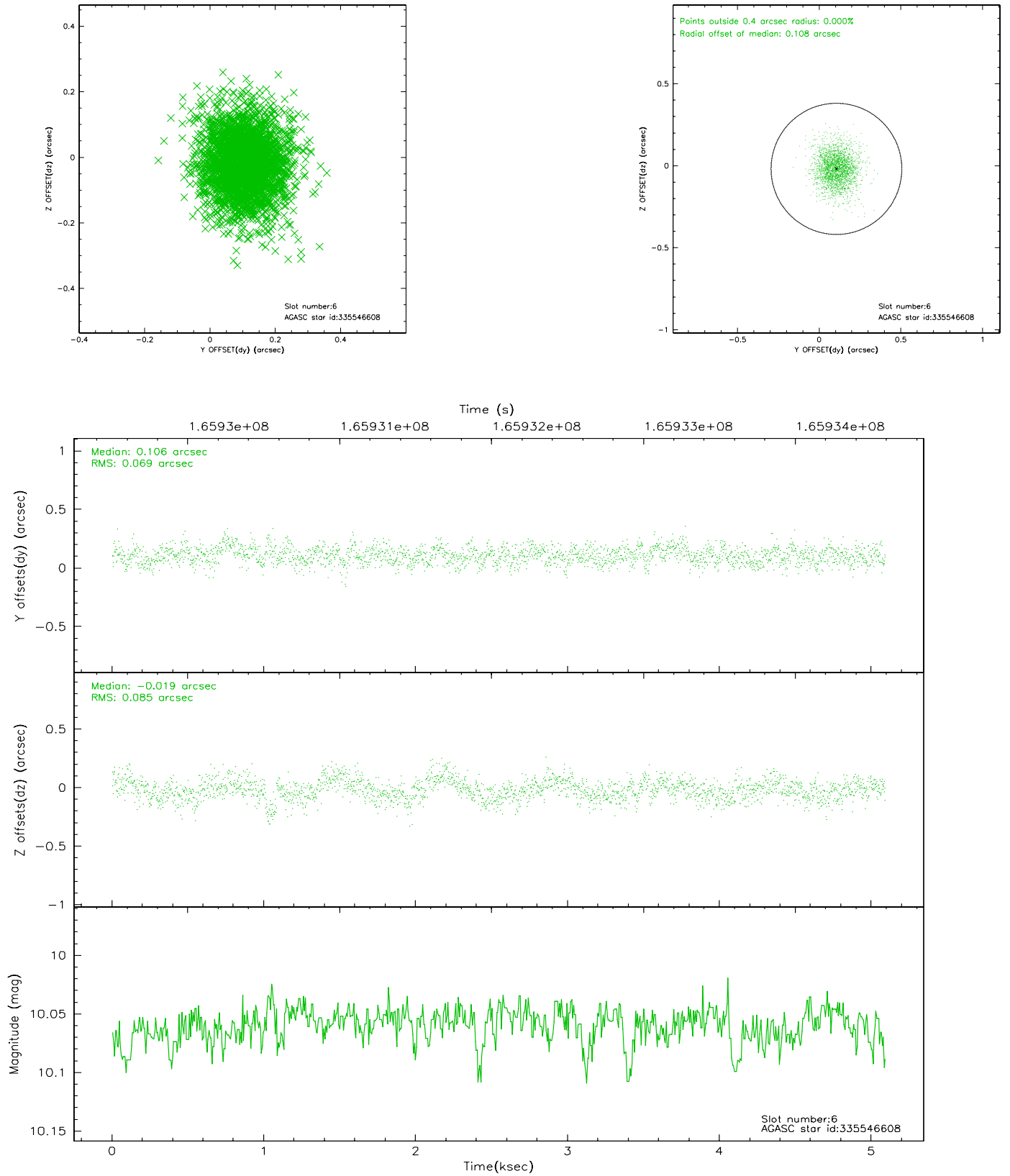
## 2.4.2 Slot 4



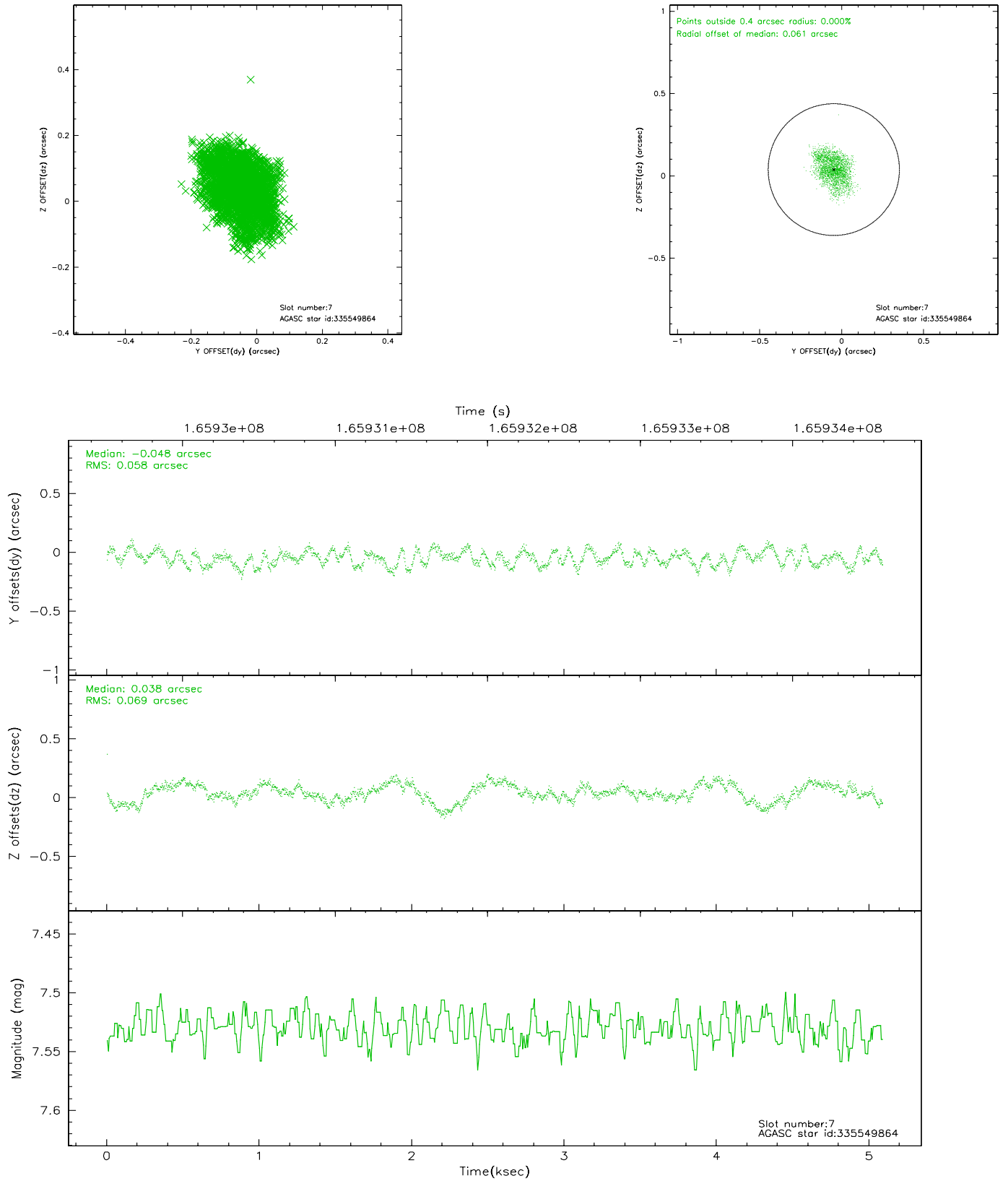
### 2.4.3 Slot 5



## 2.4.4 Slot 6

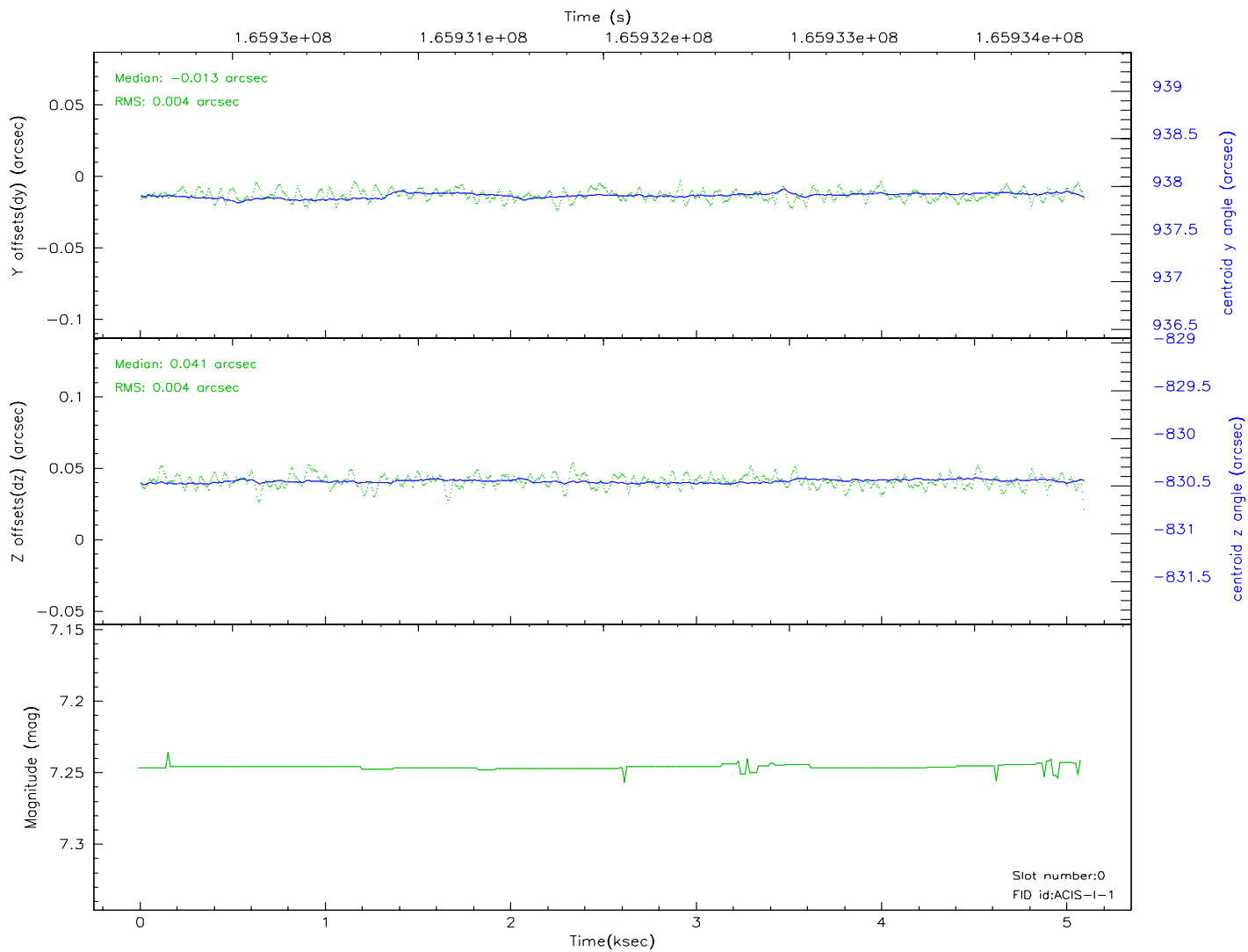
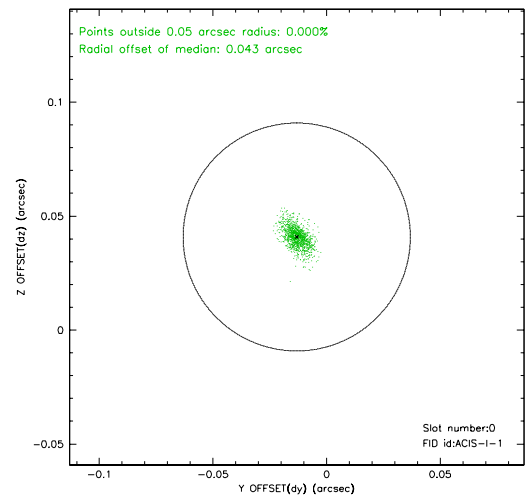
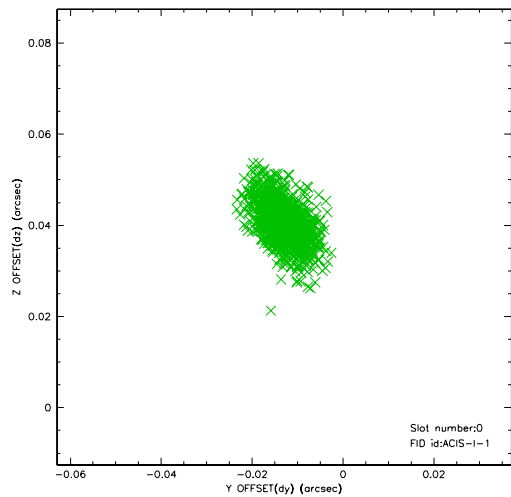


## 2.4.5 Slot 7

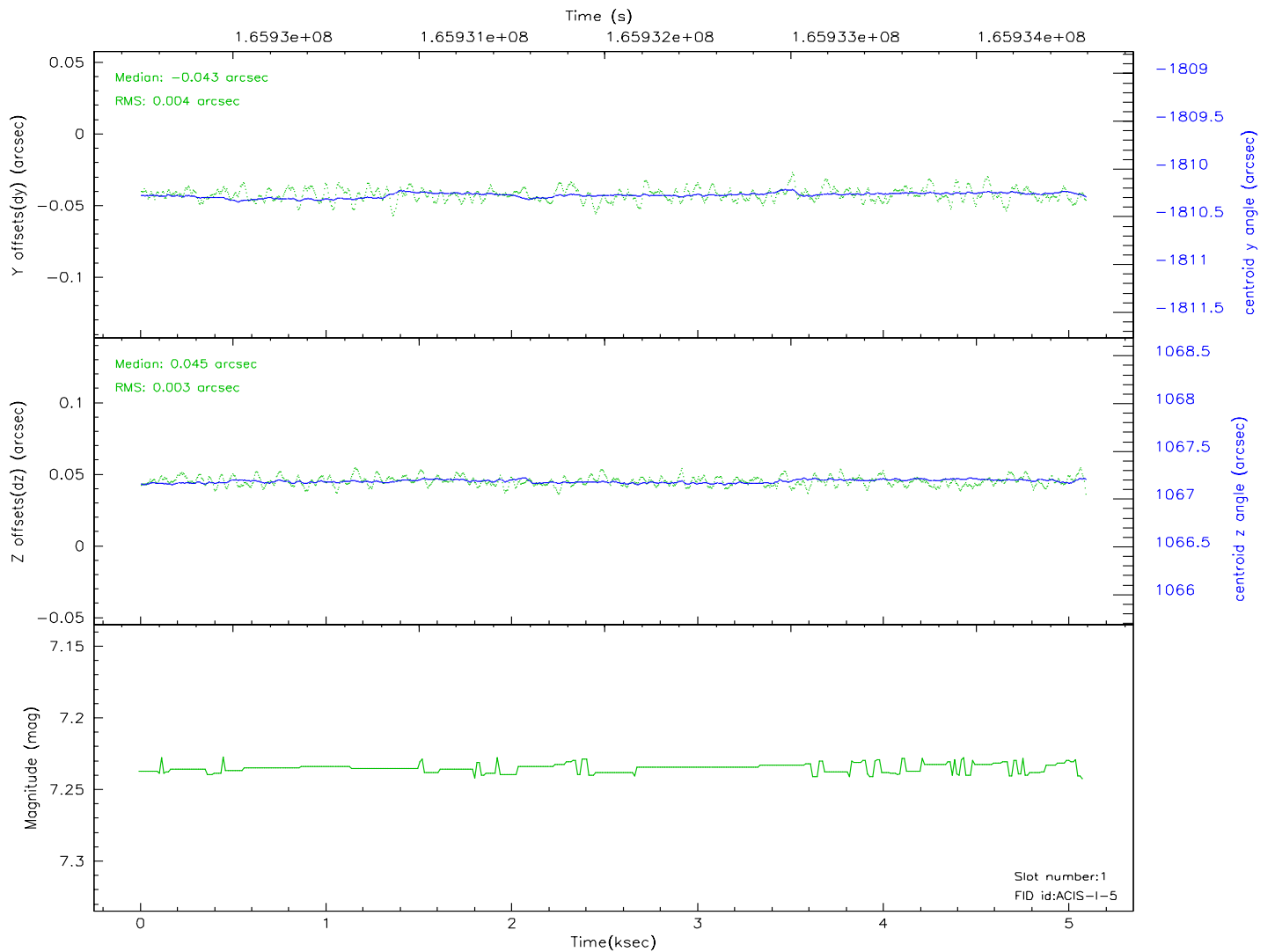
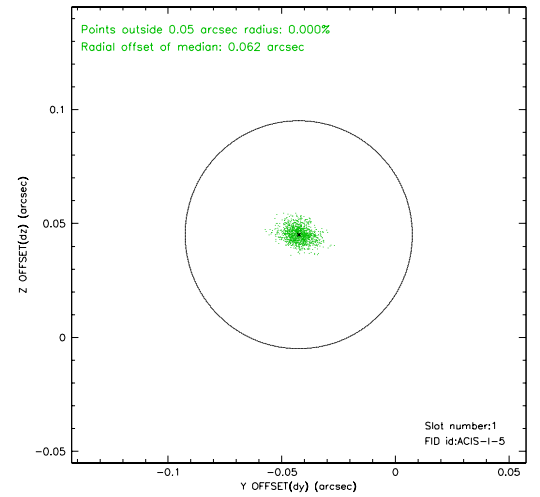
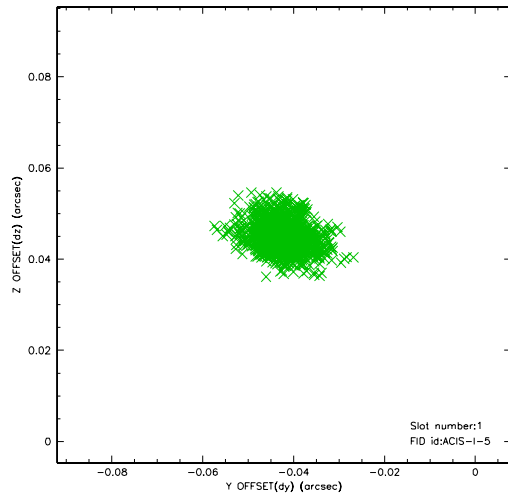


## 2.5 FID Slots

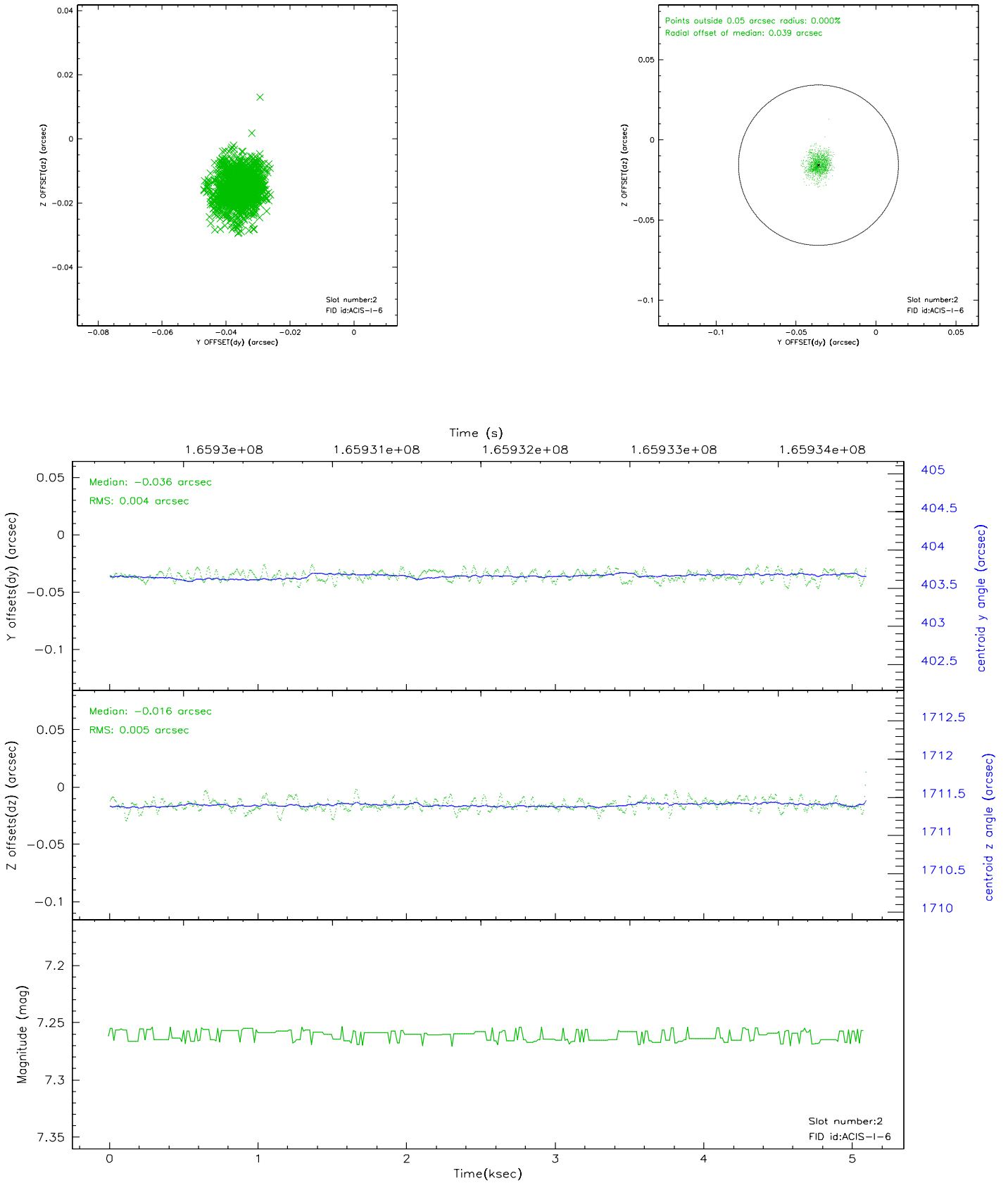
### 2.5.1 Slot 0



## 2.5.2 Slot 1

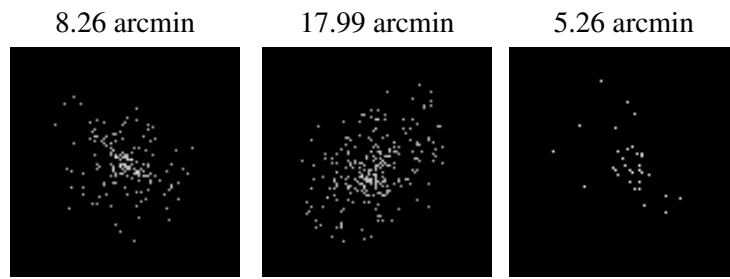


### 2.5.3 Slot 2





### 3 Point Sources



## A Summary

### A.1 Status

V&V Scientist	Jen Lauer
V&V Date (YYYY-MM-DD)	2006.07.30
V&V Edition	1
V&V Disposition and Status	OK
V&V Charge Time	4.668

### A.2 Comments