

V&V Reference Report

L2 ASCDS Version : 8.4.5

Observation 3453 - L2 Version 3
Chandra X-Ray Center

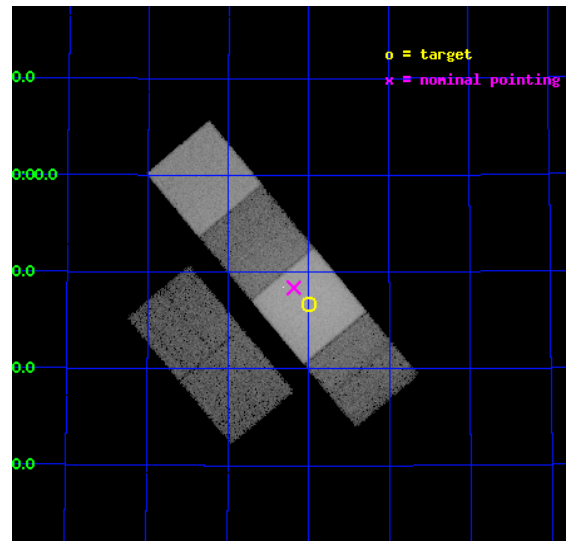
L2 Processing Date : Oct 5 2012

Contents

1	Front	2
2	OBI	3
2.1	OBI	3
2.1.1	Images	3
2.1.2	Bias	3
2.1.3	Parameters	4
2.1.4	Events	4
2.2	Compared Parameters	5
2.3	Aspect	6
2.4	Star Slots	9
2.4.1	Slot 3	9
2.4.2	Slot 4	10
2.4.3	Slot 5	11
2.4.4	Slot 6	12
2.4.5	Slot 7	13
2.5	FID Slots	14
2.5.1	Slot 0	14
2.5.2	Slot 1	15
2.5.3	Slot 2	16
A	Summary	17
A.1	Status	17
A.2	Comments	17

1 Front

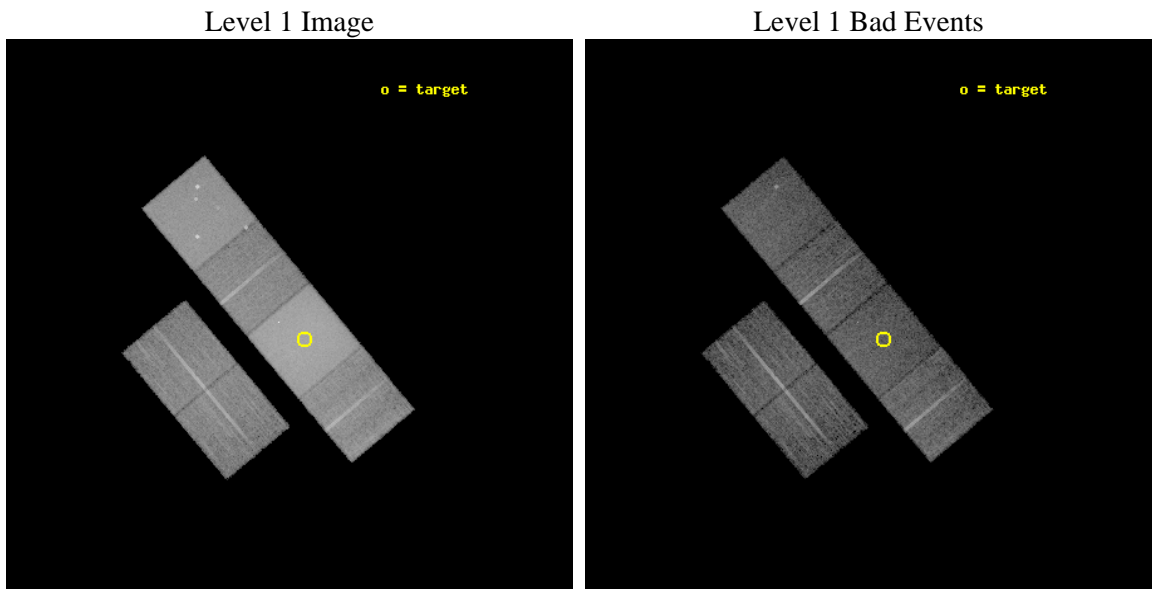
seq_num	100034	Sequence number
obs_id	3453	Observation id
title	SPECTROSCOPIC IMAGING OF CHARGE EXCHANGE X-RAY EMISSION FROM COMET C/2002 C1	Proposal title
observer	Dr. Konrad Dennerl	Principal investigator
object	C/2002 C1	Source name
dtcycle	0	
cycle	P	events from which exps? Prim/Second/Both
ra_targ	350.0009	Observer's specified target RA [deg]
dec_targ	55.77887	Observer's specified target Dec [deg]
ra_nom	350.04596625235	Nominal RA [deg]
dec_nom	55.806426927449	Nominal Dec [deg]
roll_nom	50.119353341939	Nominal Roll [deg]
revision	3	Processing version of data
ontime	11961.59995544	Sum of GTIs [s]
livetime	11810.134974393	Livetime [s]
ontime2	11958.358965248	Sum of GTIs [s]
ontime3	11958.358995169	Sum of GTIs [s]
ontime5	11961.59995544	Sum of GTIs [s]
ontime6	11961.59995544	Sum of GTIs [s]
ontime7	11961.59995544	Sum of GTIs [s]
ontime8	11961.59995544	Sum of GTIs [s]
l2events	308010	Number of level 2 events



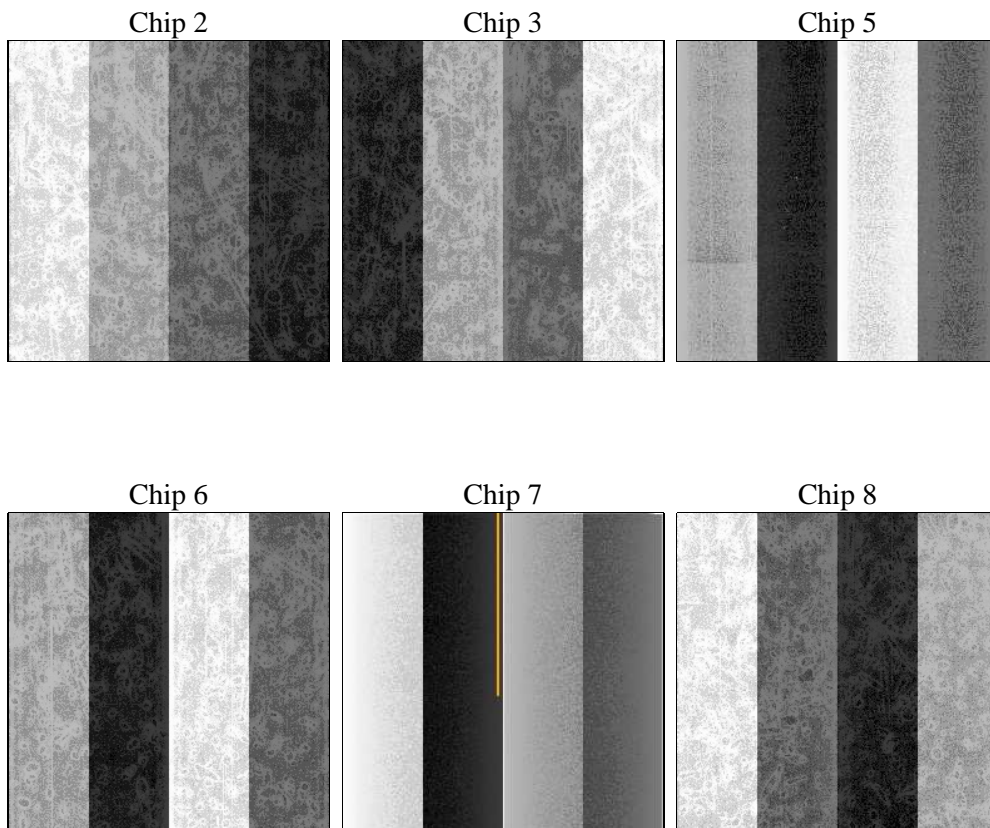
2 OBI

2.1 OBI

2.1.1 Images



2.1.2 Bias



2.1.3 Parameters

obi_num	0	Obi number	sched_exp_time	12000.000000	[s] Scheduled observation exposure time
ascdsver	8.4.5	Processing system revision	ontime	11961.59995544	Sum of GTIs [s]
caldsver	4.5.2	 	ontime2	11958.358965248	Sum of GTIs [s]
date	2012-10-05T14:59:00	Date and time of file creation	ontime3	11958.358995169	Sum of GTIs [s]
revision	3	Processing version of data	ontime5	11961.59995544	Sum of GTIs [s]
			ontime6	11961.59995544	Sum of GTIs [s]
			ontime7	11961.59995544	Sum of GTIs [s]
			ontime8	11961.59995544	Sum of GTIs [s]
			l1events	736797	Number of level 1 events

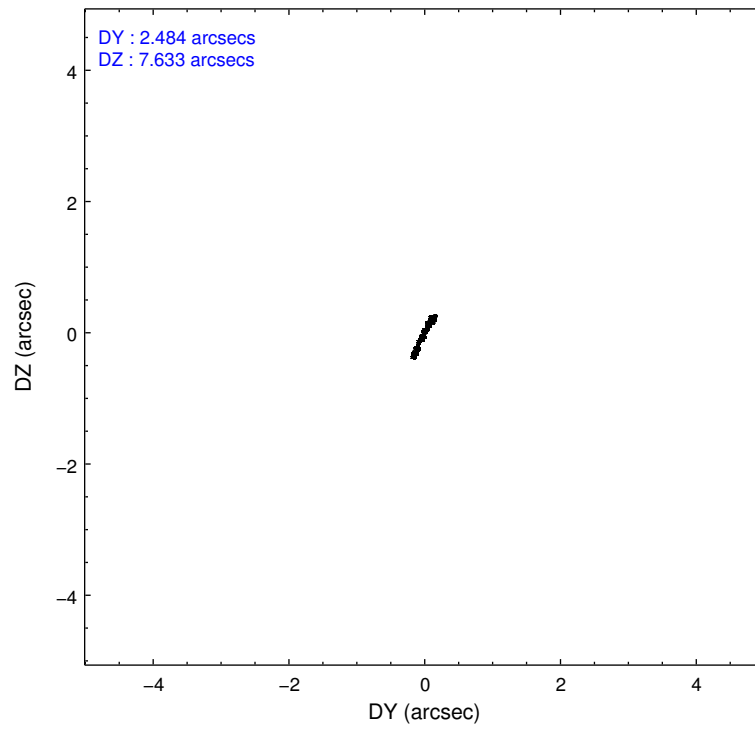
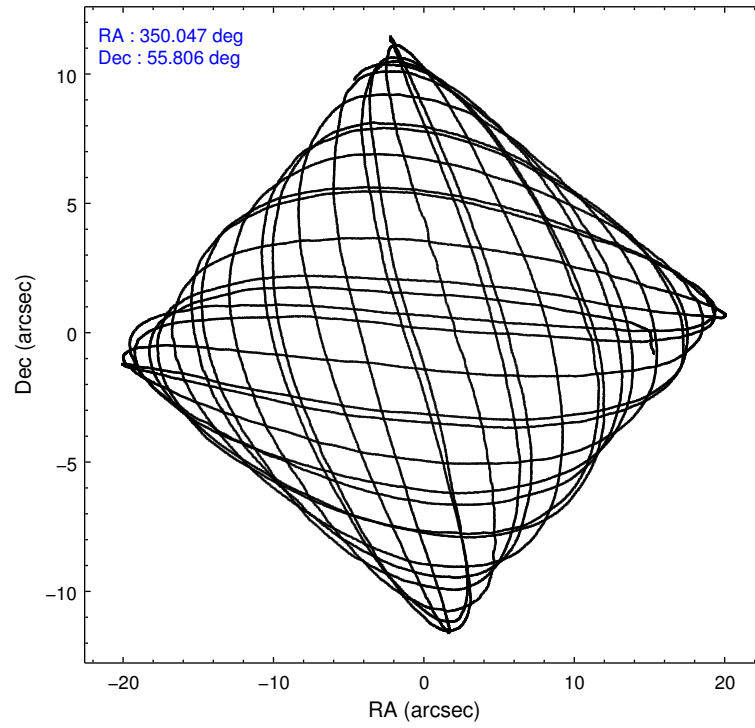
2.1.4 Events

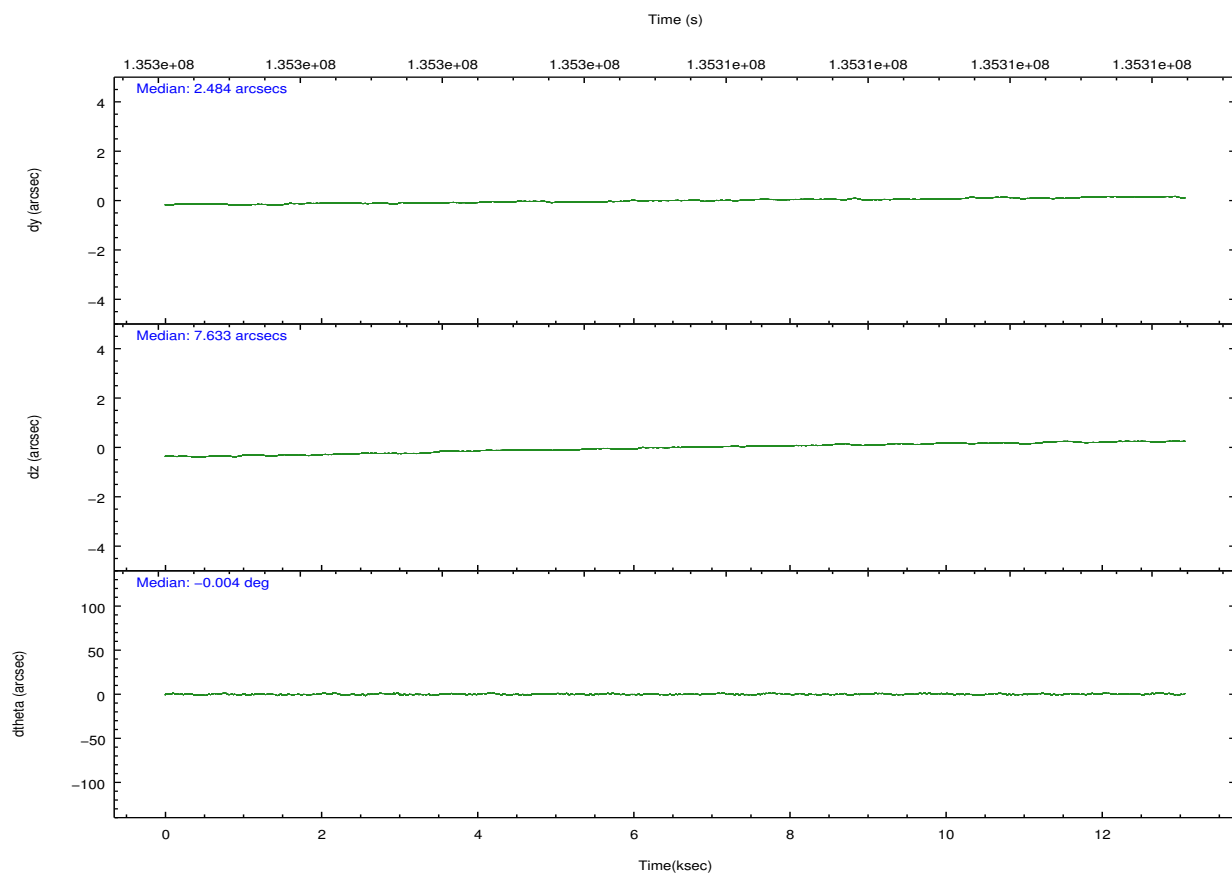
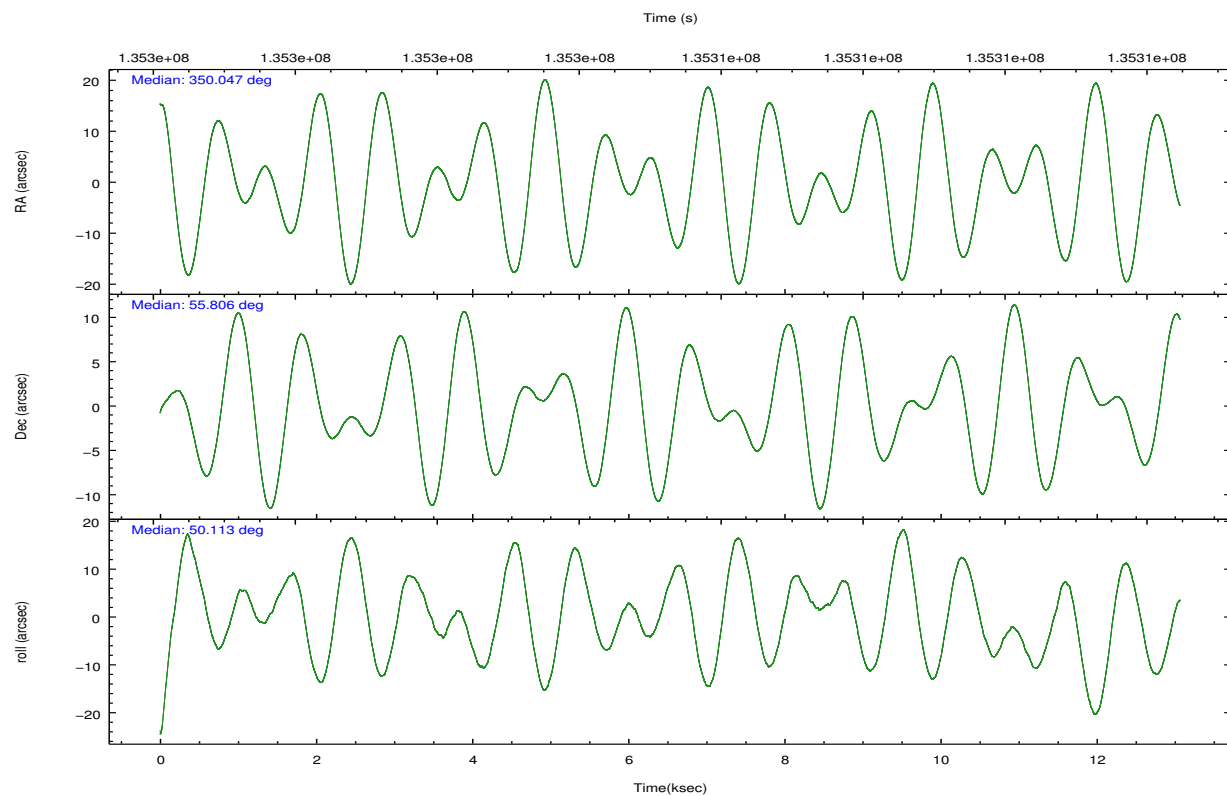
	ccd 2	ccd 3	ccd 5	ccd 6	ccd 7	ccd 8		ccd 2	ccd 3	ccd 5	ccd 6	ccd 7	ccd 8
level 1 events	85597	82116	139676	96886	220141	112381	grade 0 events	10107	9982	21928	22580	60909	18836
rejected events	69700	66501	60642	67401	60045	79306		11%	12%	15%	23%	27%	16%
rejected %	81%	80%	43%	69%	27%	70%	grade 1 events	53	68	172	116	151	95
								0%	0%	0%	0%	0%	0%
							grade 2 events	2369	2140	21450	2915	36159	4883
								2%	2%	15%	3%	16%	4%
							grade 3 events	928	924	4160	1065	15775	2222
								1%	1%	2%	1%	7%	1%
							grade 4 events	922	910	4060	1070	15556	2101
								1%	1%	2%	1%	7%	1%
							grade 5 events	2862	3133	8727	3345	10418	4272
								3%	3%	6%	3%	4%	3%
							grade 6 events	1574	1666	27459	1863	31735	5038
								1%	2%	19%	1%	14%	4%
							grade 7 events	66782	63293	51720	63932	49438	74934
								78%	77%	37%	65%	22%	66%

2.2 Compared Parameters

Parameter	Planned	Actual	Parameter	Planned	Actual
Instrument	ACIS	ACIS	Obspar format version number	7	7
Detector	ACIS-235678	ACIS-235678	Obspar file type	PREDICTED	ACTUAL
Grating	NONE	NONE	Obspar update status	NONE	UPDATED
Data mode	VFAINT	VFAINT	Number of optional ACIS chips dropped	0	0
Observation mode	POINTING	POINTING	On-chip summing requested	N	N
[deg] Pointing RA	350.038250	350.045966252351	Subarray requested	NONE	NONE
[deg] Pointing Dec	55.779523	55.80642692744892	Alternating exposures requested	N	N
[deg] Pointing Roll	49.969116	50.1193533419387	[s] Primary exposure time	0.000000	3.2
[mm] SIM focus pos	-0.684267	-0.6828225247311905			
[mm] SIM defocus	0	0.001444936568705701			
[mm] SIM translation stage pos	-190.132523	-190.1400660498719			
[mm] SIM translation stage offset	0	0.00754346686406393			
[s] Observation start time (MET)	135299812.184000	135298412.02822			
Observation start date	2002-04-15T23:15:48	2002-04-15T22:53:32			
[s] Observation end time (MET)	135311812.184000	135312693.3538			
Observation end date	2002-04-16T02:35:48	2002-04-16T02:51:33			
Read mode	TIMED	TIMED			

2.3 Aspect



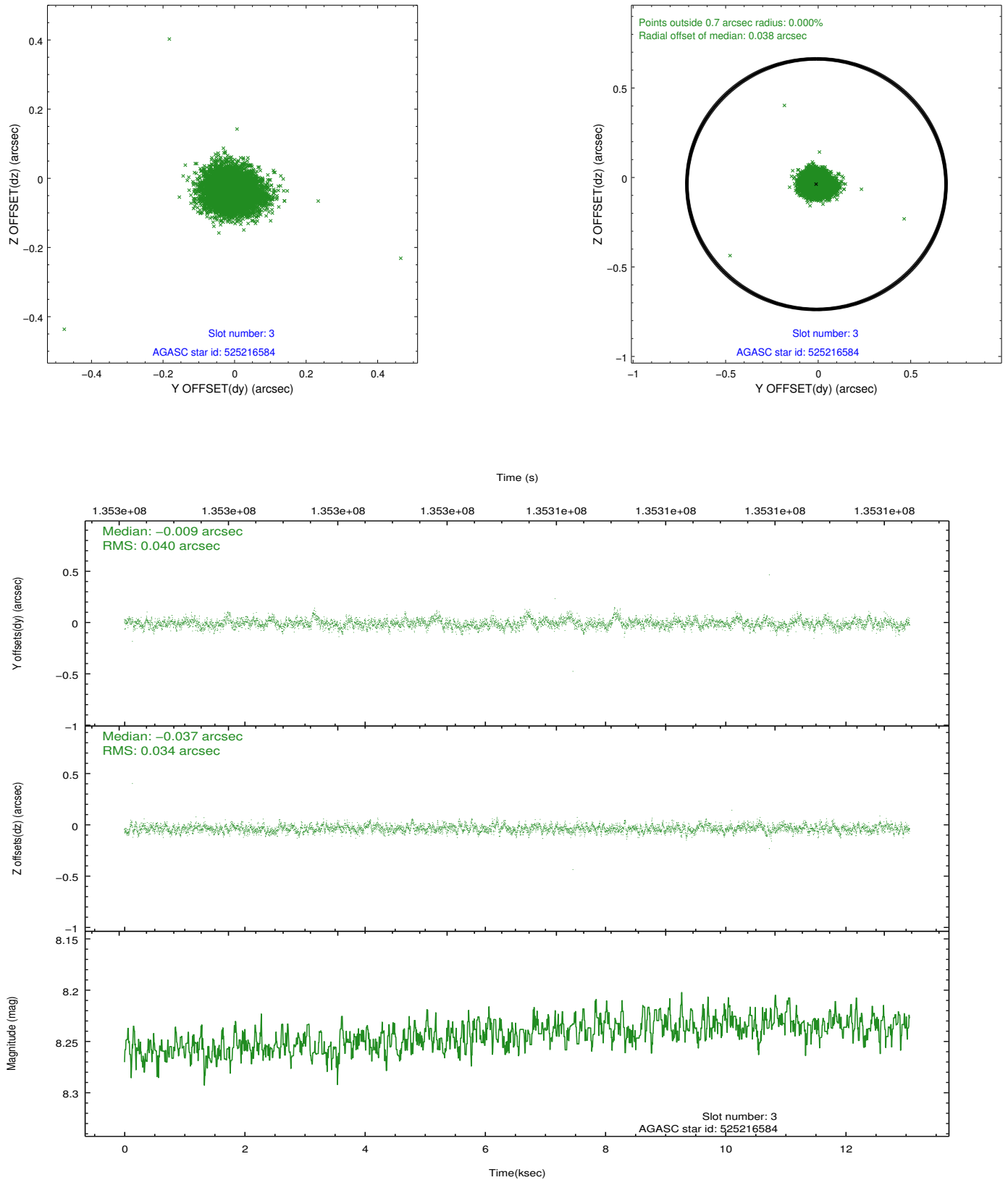


Slot Statistics

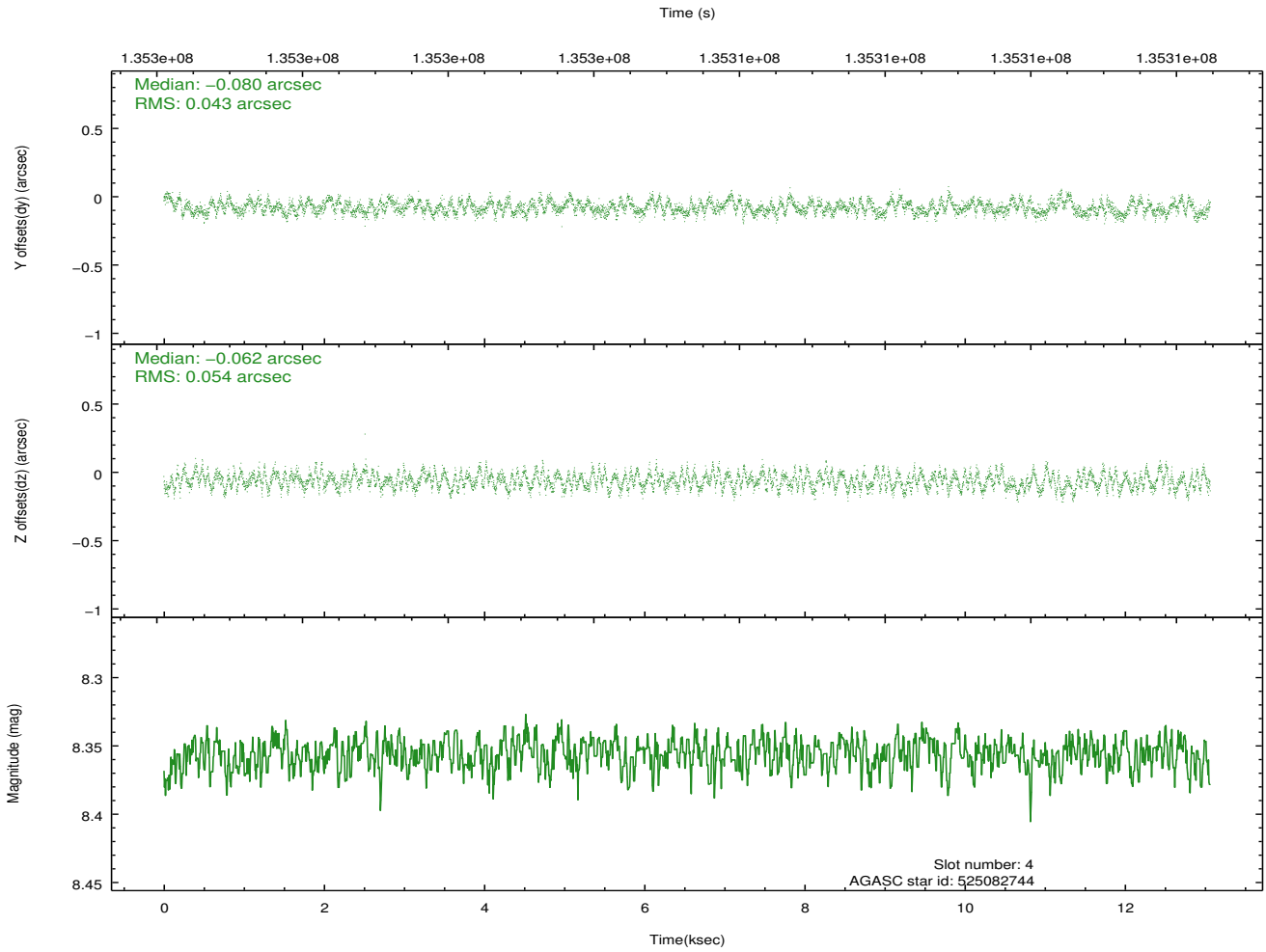
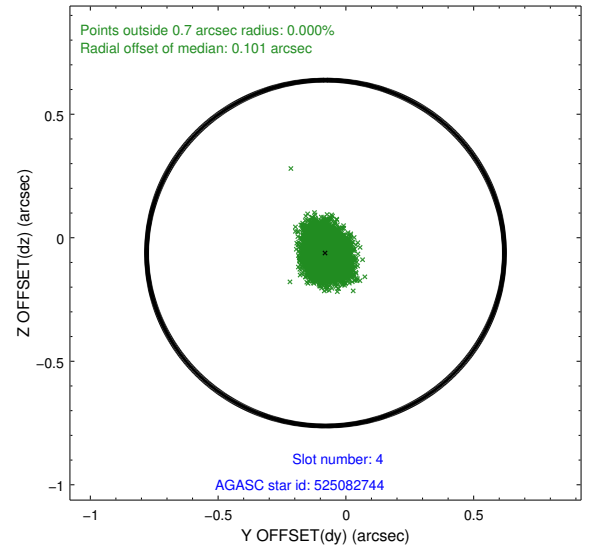
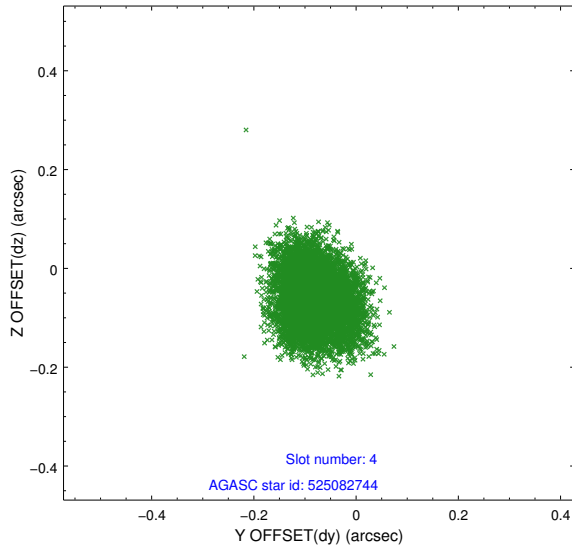
slot	status	id	mag	n_pts	med_dy	med_dz	dr1	dr2	ra	dec	mean_y	mean_z
0	FID	ACIS-S-2	7.10	3187	-0.020	-0.011	0.014	0.022	0.000000	0.000000	-755.13	-1728.79
1	FID	ACIS-S-4	7.20	3186	-0.033	0.013	0.008	0.015	0.000000	0.000000	2157.97	179.33
2	FID	ACIS-S-5	7.23	3187	0.022	0.007	0.012	0.020	0.000000	0.000000	-1807.45	173.42
3	GUIDE	525216584	8.24	6373	-0.009	-0.037	0.054	0.090	350.543602	56.348227	2218.34	548.69
4	GUIDE	525082744	8.36	6370	-0.080	-0.062	0.075	0.116	349.557053	56.253296	689.10	1837.37
5	GUIDE	524682032	8.44	6304	-0.123	0.062	0.060	0.100	350.993541	55.657988	922.76	-1756.72
6	GUIDE	524695952	9.42	6364	0.082	-0.015	0.091	0.149	350.319039	55.210799	-1195.96	-1756.98
7	GUIDE	524562888	9.54	6364	0.128	0.051	0.093	0.166	349.643084	55.219796	-2063.64	-672.45

2.4 Star Slots

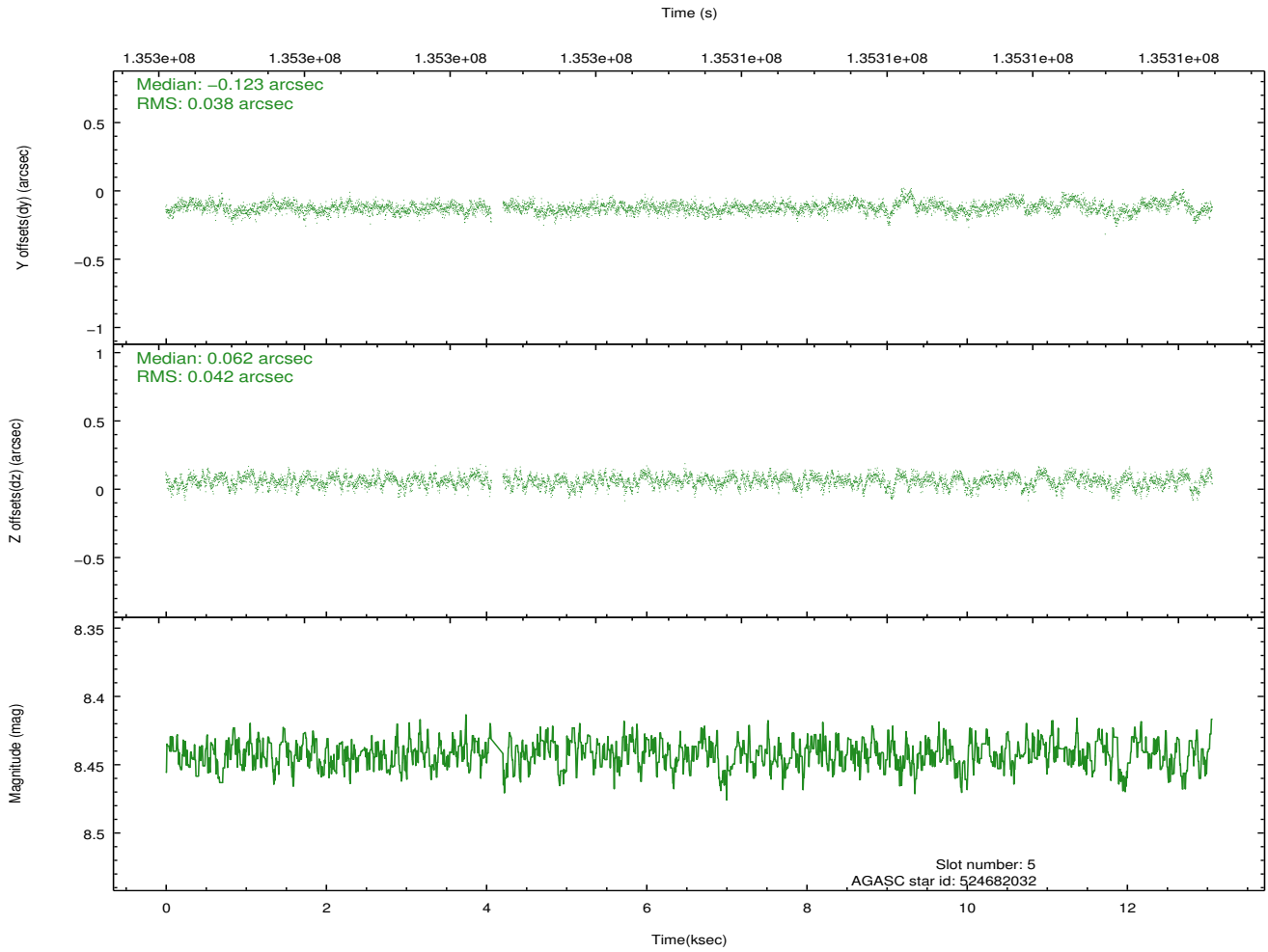
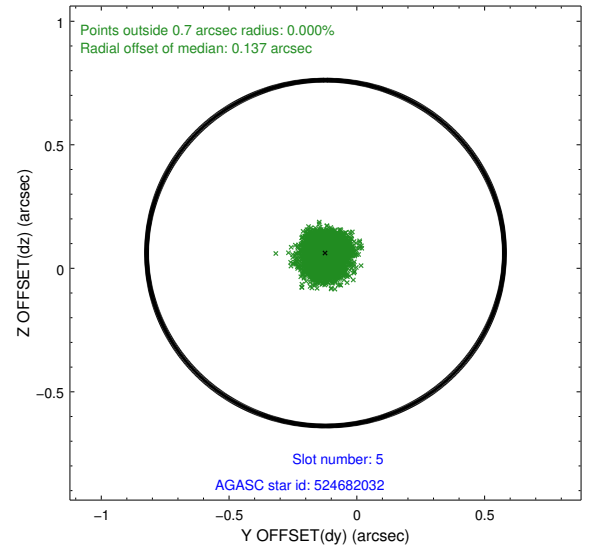
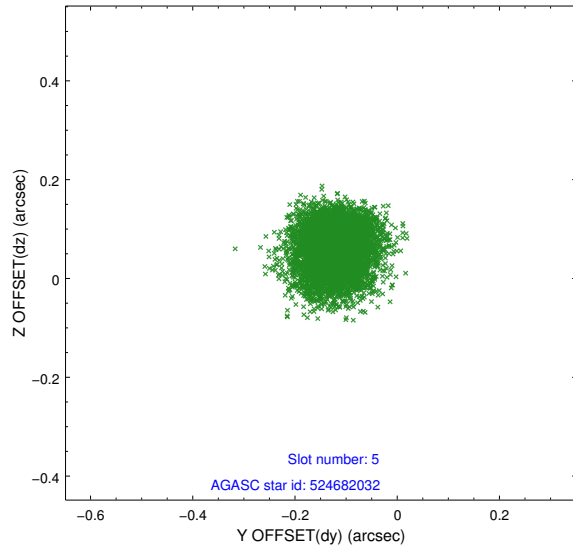
2.4.1 Slot 3



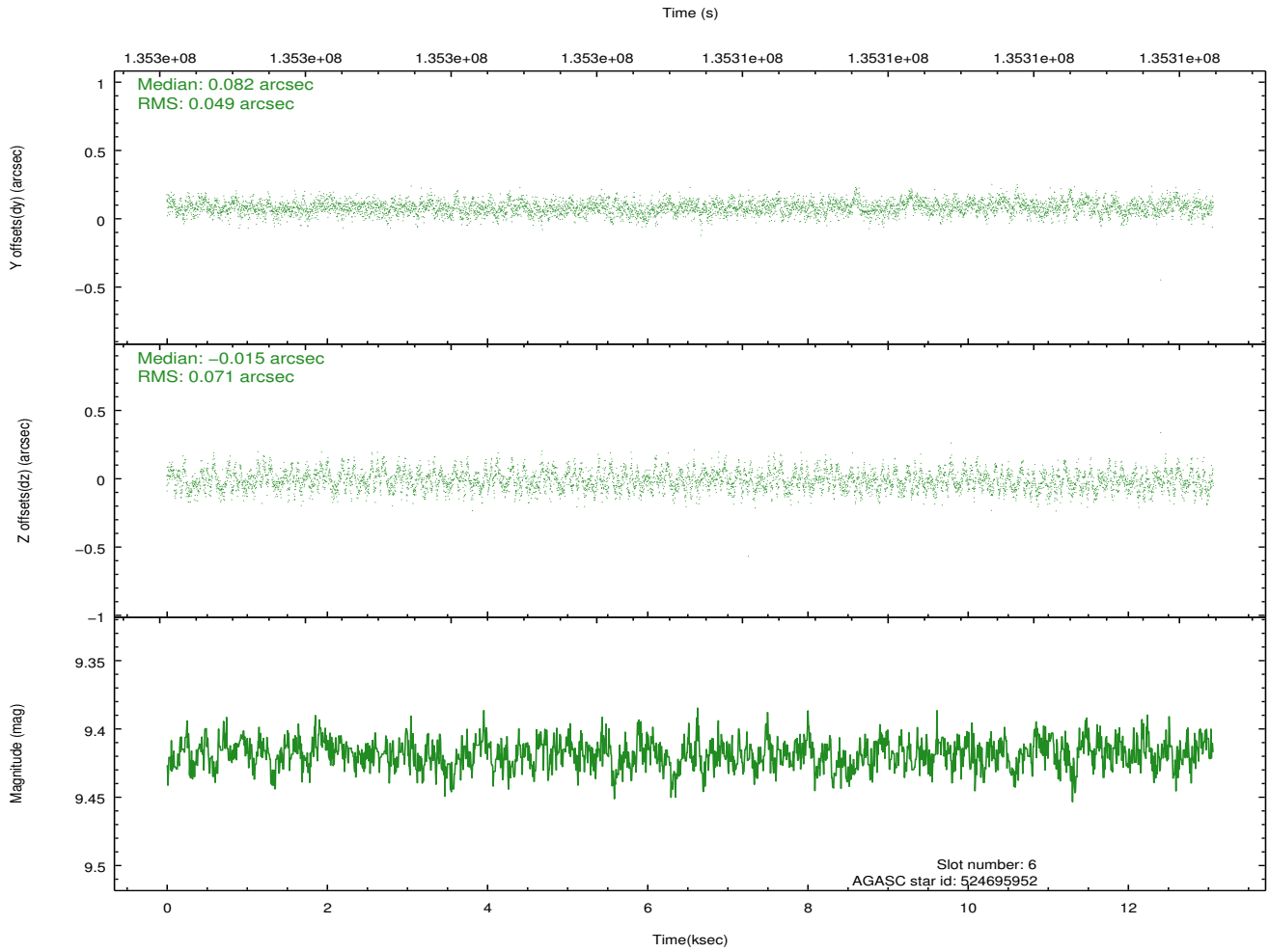
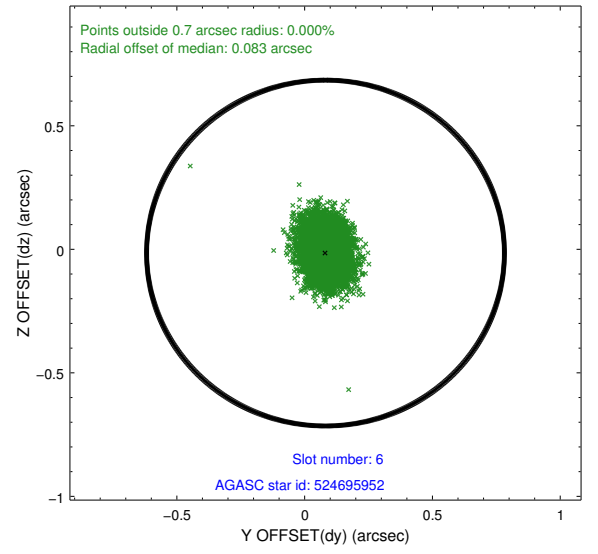
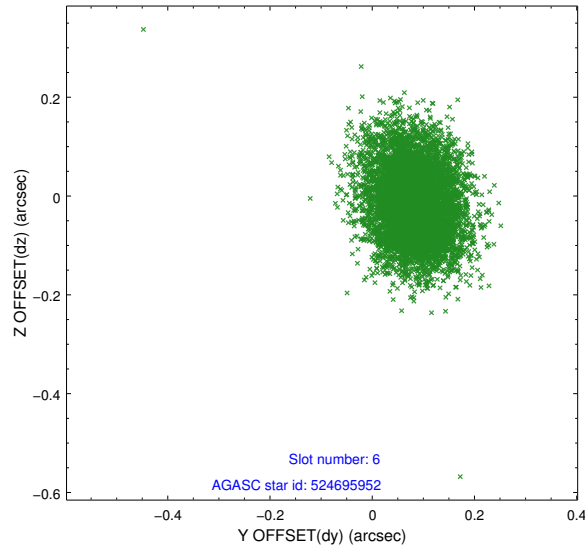
2.4.2 Slot 4



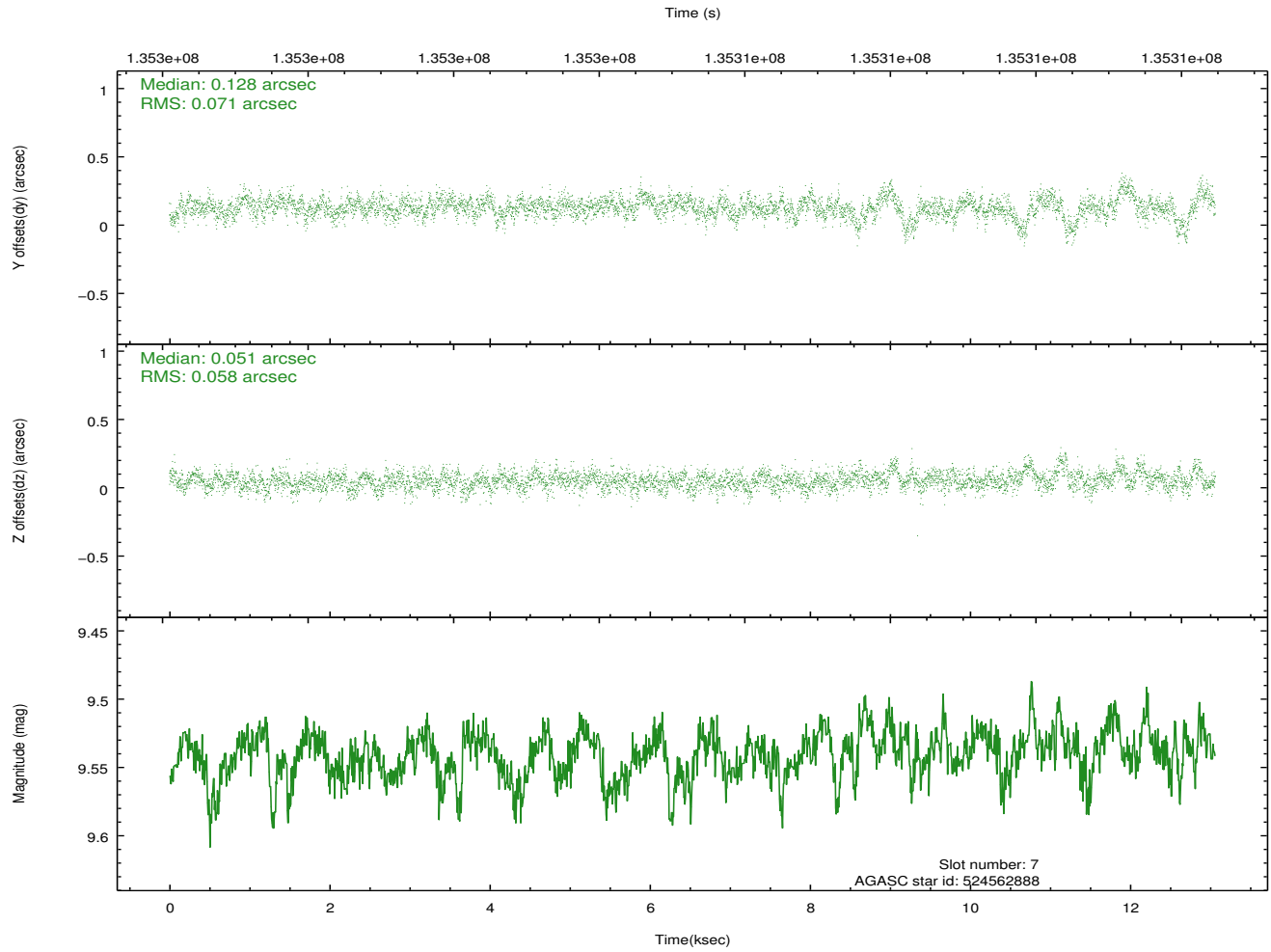
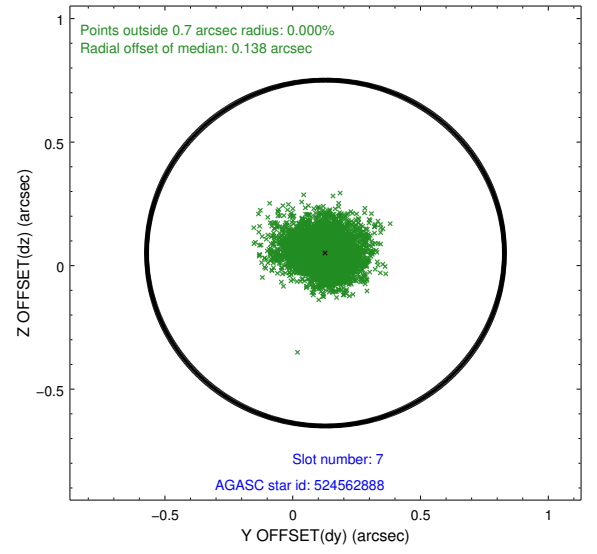
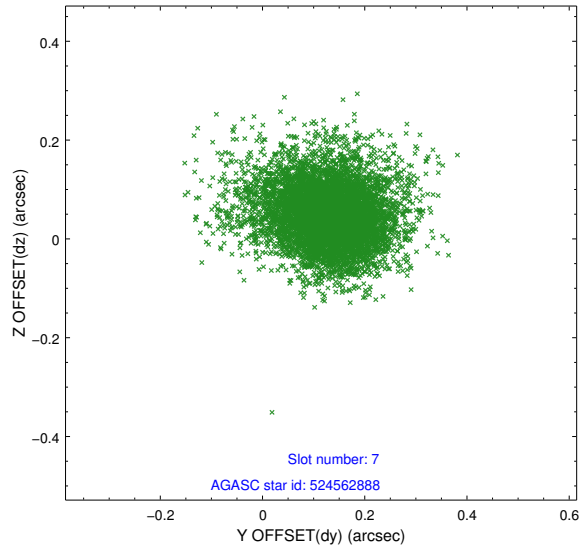
2.4.3 Slot 5



2.4.4 Slot 6

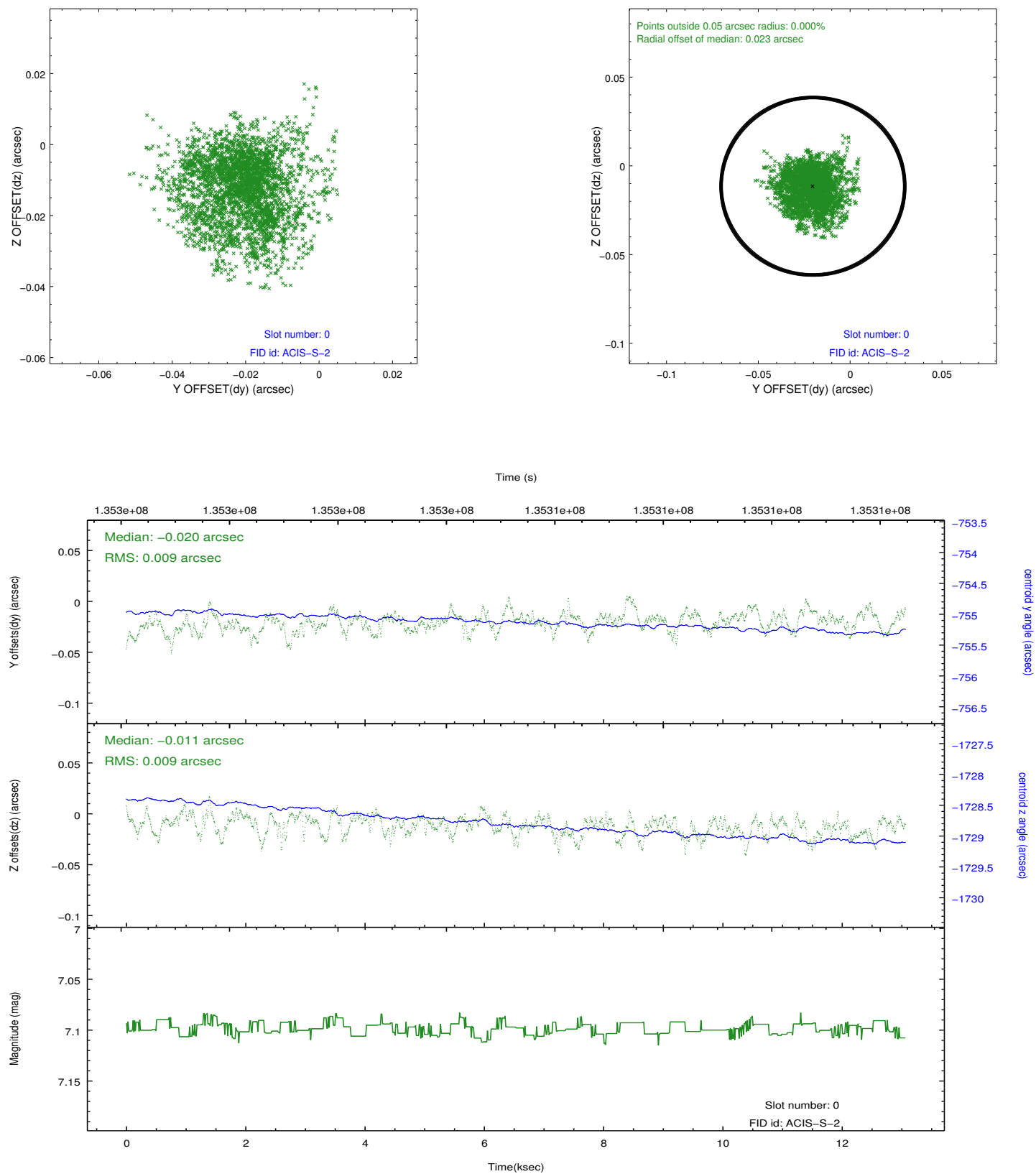


2.4.5 Slot 7

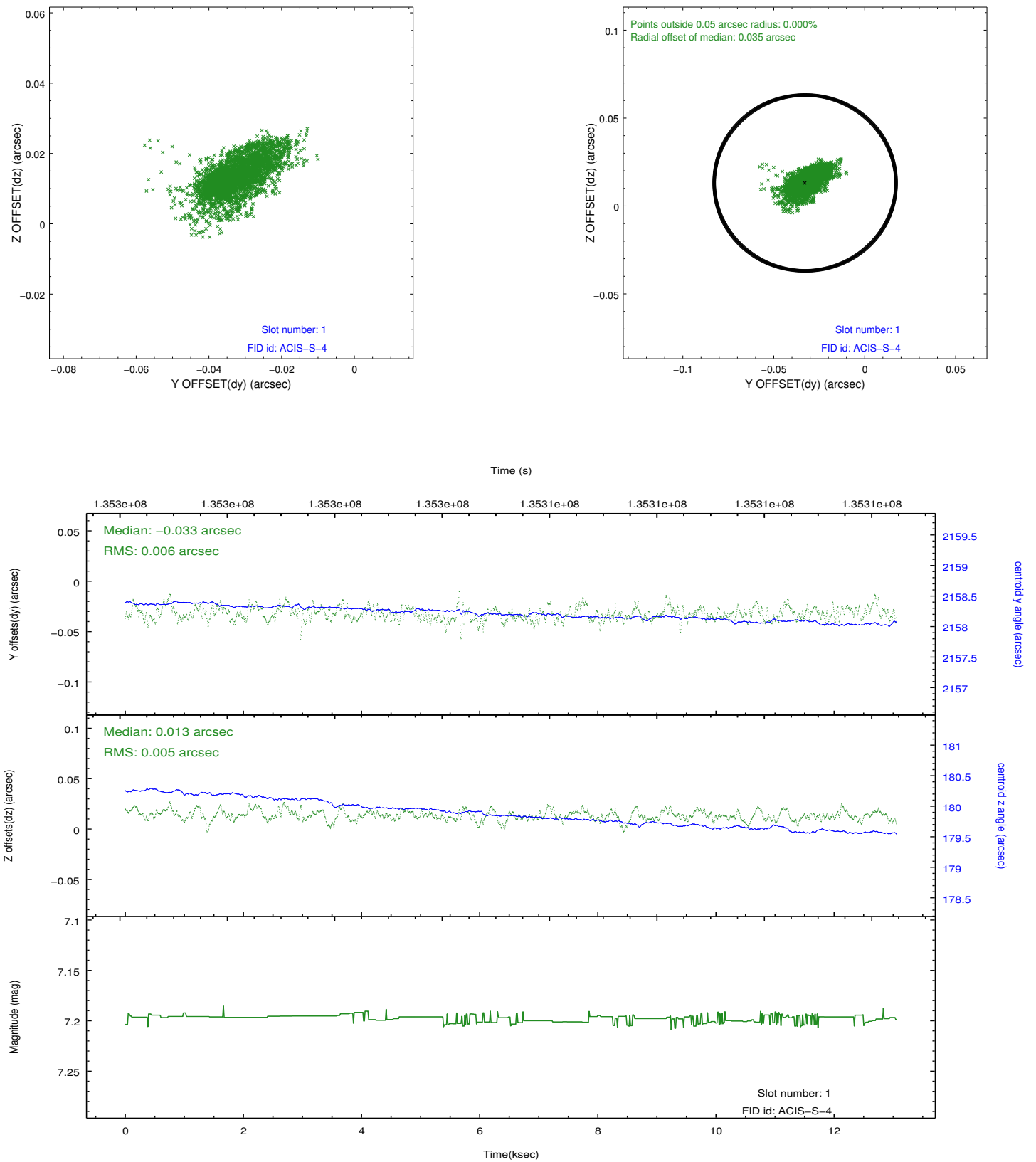


2.5 FID Slots

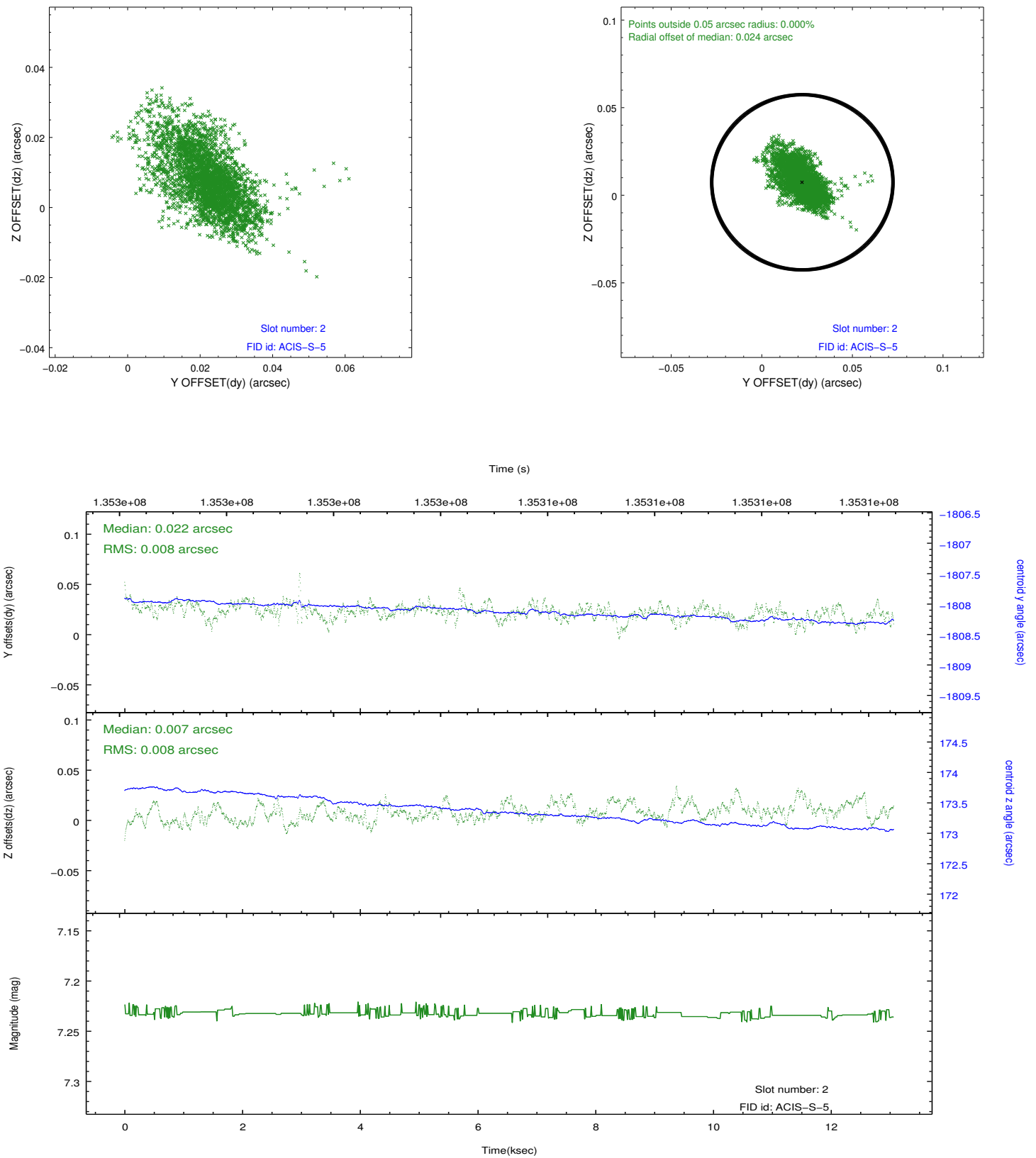
2.5.1 Slot 0



2.5.2 Slot 1



2.5.3 Slot 2



A Summary

A.1 Status

V&V Scientist	Beth Sundheim
V&V Date (YYYY-MM-DD)	2012.10.11
V&V Edition	1
V&V Disposition and Status	OK
V&V Charge Time	11.964

A.2 Comments