

V&V Reference Report

L2 ASCDS Version : 8.4.5

Observation 3323 - L2 Version 3
Chandra X-Ray Center

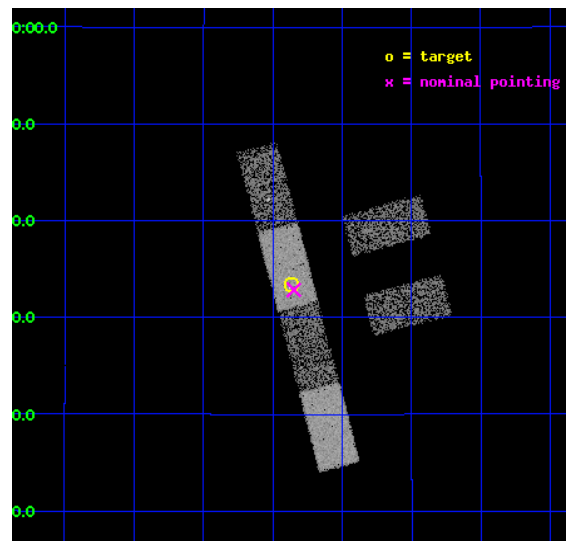
L2 Processing Date : Oct 11 2012

Contents

1	Front	2
2	OBI	3
2.1	OBI	3
2.1.1	Images	3
2.1.2	Bias	3
2.1.3	Parameters	4
2.1.4	Events	4
2.2	Compared Parameters	5
2.3	Aspect	6
2.4	Star Slots	9
2.4.1	Slot 3	9
2.4.2	Slot 4	10
2.4.3	Slot 5	11
2.4.4	Slot 6	12
2.4.5	Slot 7	13
2.5	FID Slots	14
2.5.1	Slot 0	14
2.5.2	Slot 1	15
2.5.3	Slot 2	16
A	Summary	17
A.1	Status	17
A.2	Comments	17

1 Front

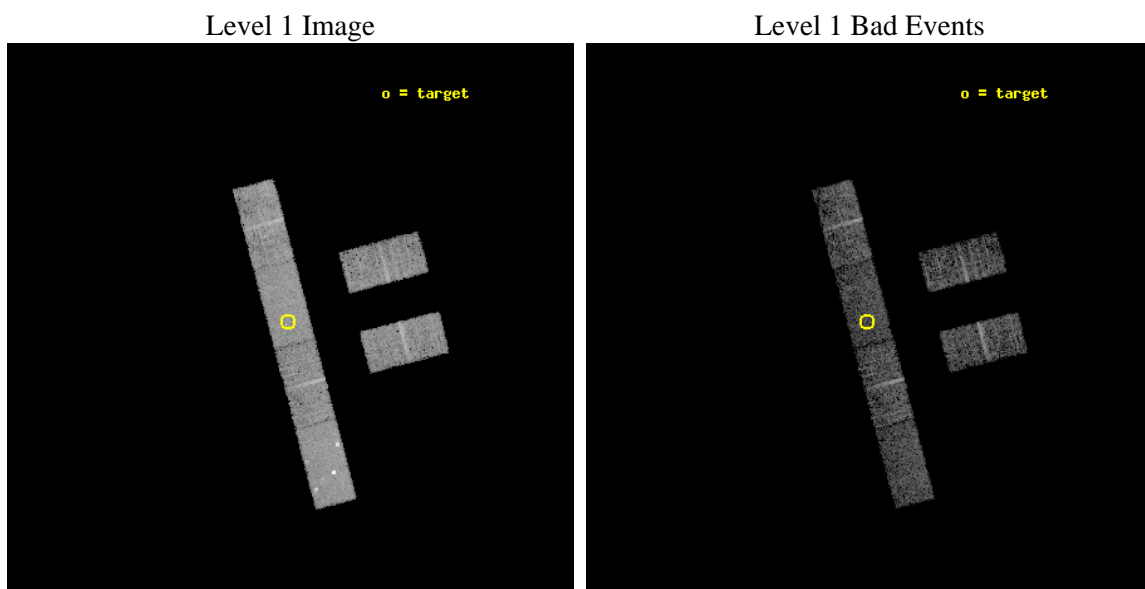
seq_num	900162	Sequence number
obs_id	3323	Observation id
title	THE SHEEP SURVEY: WHAT KIND OF OBJECTS MAKE THE X-RAY BACKGROUND?	
observer	Prof Kirpal Nandra	Principal investigator
object	AX J1230.8+1433	Source name
dtcycle	0	
cycle	P	events from which exps? Prim/Second/Both
ra_targ	187.71625	Observer's specified target RA [deg]
dec_targ	14.556389	Observer's specified target Dec [deg]
ra_nom	187.71205908437	Nominal RA [deg]
dec_nom	14.54760655664	Nominal Dec [deg]
roll_nom	255.29972223067	Nominal Roll [deg]
revision	3	Processing version of data
ontime	5302.5707525909	Sum of GTIs [s]
livetime	5184.3671808671	Livetime [s]
ontime2	5302.6117925942	Sum of GTIs [s]
ontime3	5302.447632581	Sum of GTIs [s]
ontime5	5302.5297125876	Sum of GTIs [s]
ontime6	5302.4886725843	Sum of GTIs [s]
ontime7	5302.5707525909	Sum of GTIs [s]
ontime8	5302.4065926075	Sum of GTIs [s]
l2events	30332	Number of level 2 events



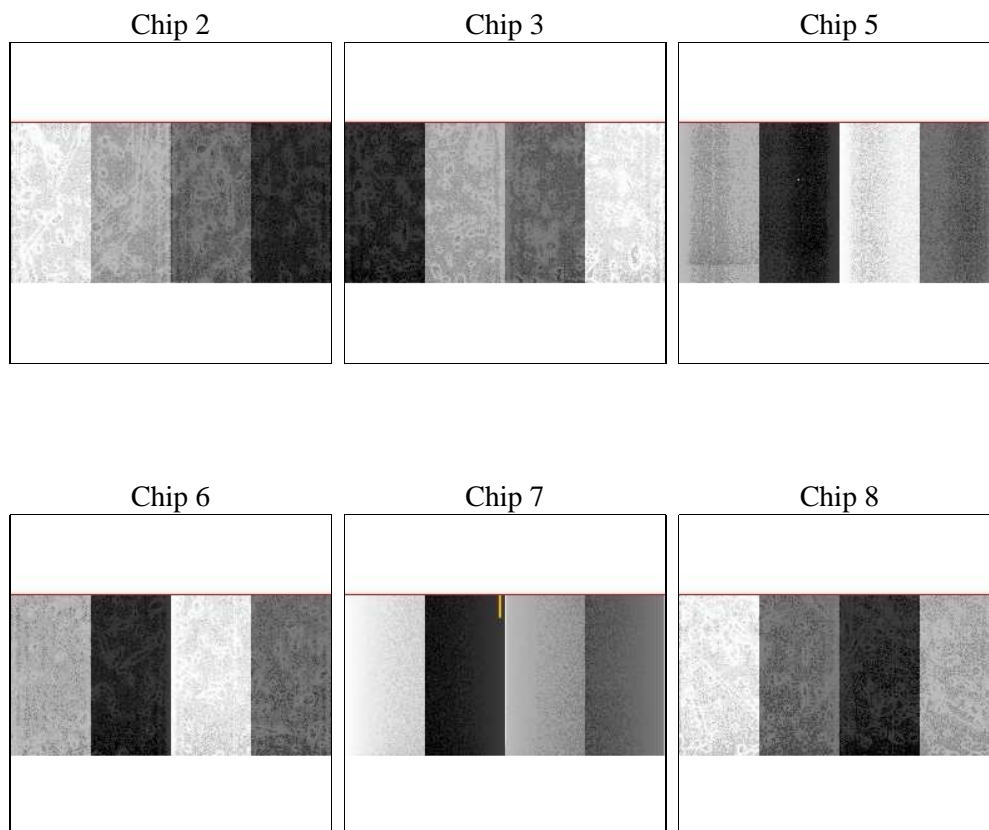
2 OBI

2.1 OBI

2.1.1 Images



2.1.2 Bias



2.1.3 Parameters

obi_num	1	Obi number	sched_exp_time	4900.000000	[s] Scheduled observation exposure time
ascdsver	8.4.5	Processing system revision	ontime	5302.5707525909	Sum of GTIs [s]
caldsver	4.5.2	 	ontime2	5302.6117925942	Sum of GTIs [s]
date	2012-10-11T15:43:15	Date and time of file creation	ontime3	5302.447632581	Sum of GTIs [s]
revision	3	Processing version of data	ontime5	5302.5297125876	Sum of GTIs [s]
			ontime6	5302.4886725843	Sum of GTIs [s]
			ontime7	5302.5707525909	Sum of GTIs [s]
			ontime8	5302.4065926075	Sum of GTIs [s]
			l1events	132192	Number of level 1 events

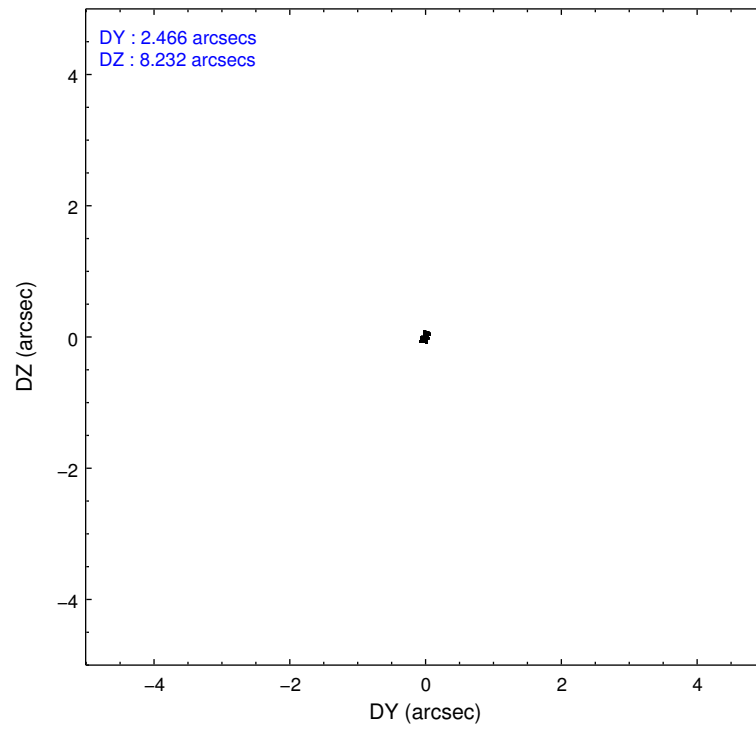
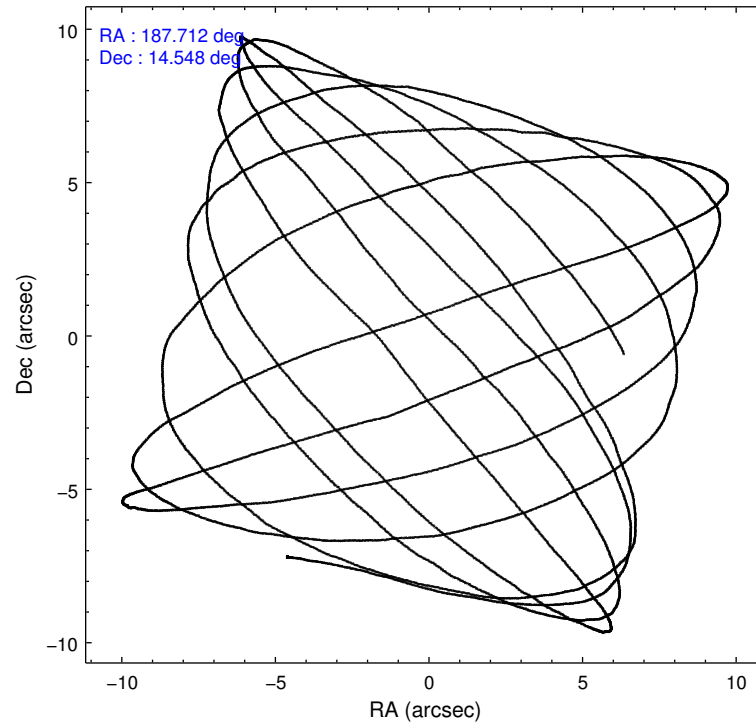
2.1.4 Events

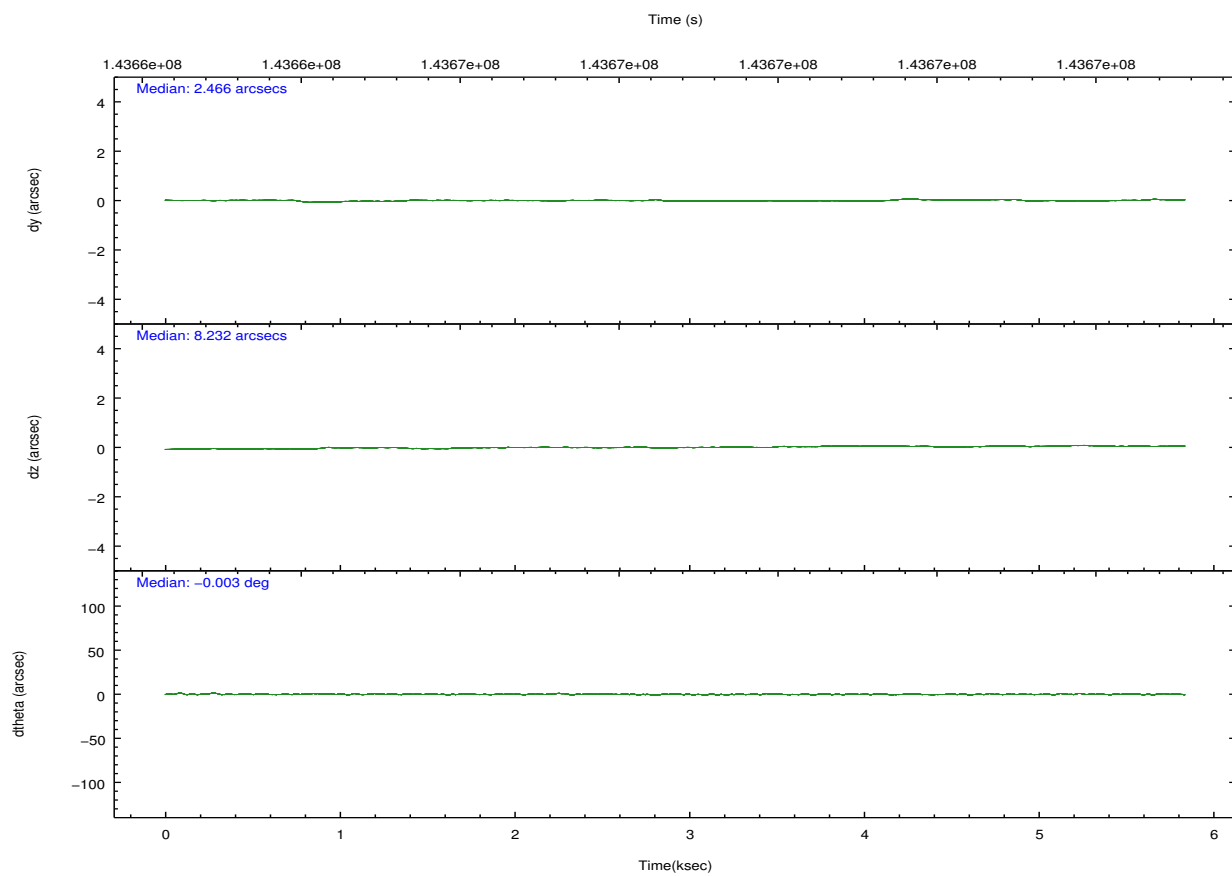
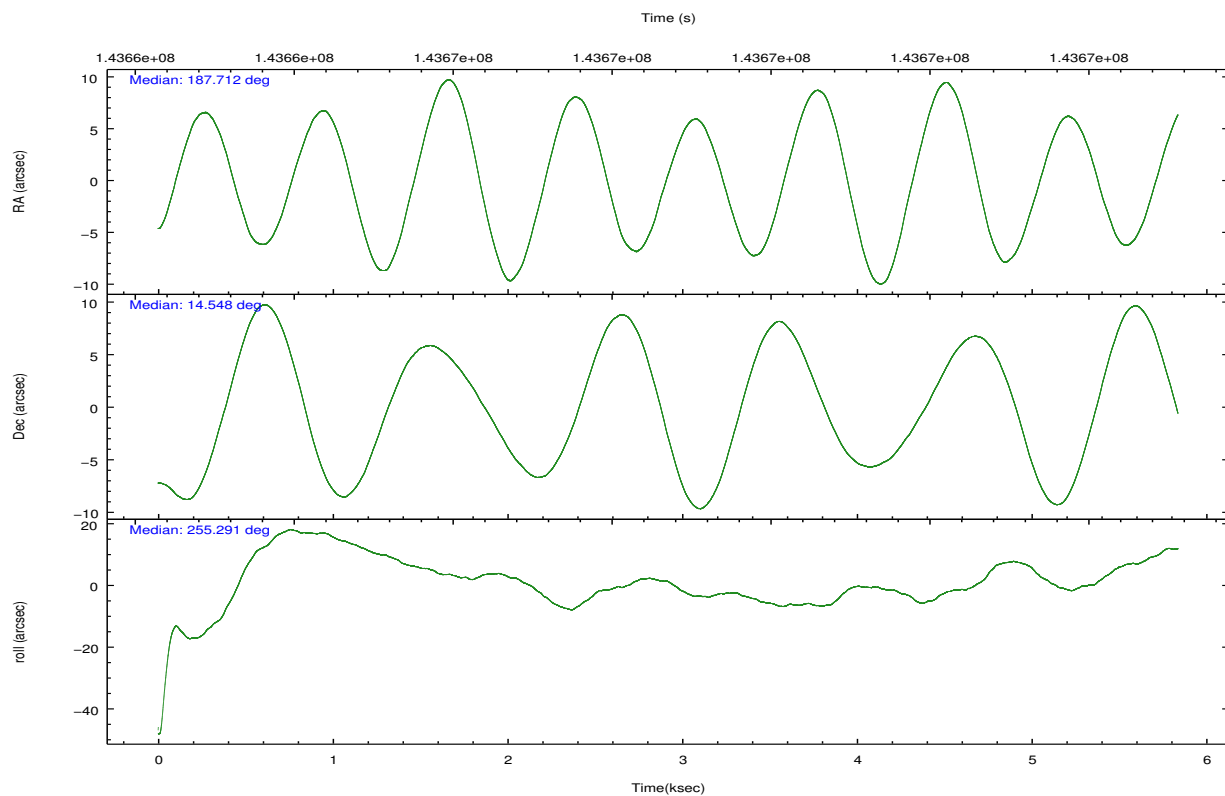
	ccd 2	ccd 3	ccd 5	ccd 6	ccd 7	ccd 8		ccd 2	ccd 3	ccd 5	ccd 6	ccd 7	ccd 8
level 1 events	19416	17623	29444	18952	23215	23542	grade 0 events	1160	1058	5732	1091	1185	2005
rejected events	16820	15231	13079	16388	12726	17872		5%	6%	19%	5%	5%	8%
rejected %	86%	86%	44%	86%	54%	75%	grade 1 events	7	4	57	4	21	11
								0%	0%	0%	0%	0%	0%
							grade 2 events	501	443	3548	490	2086	1084
								2%	2%	12%	2%	8%	4%
							grade 3 events	248	236	649	258	1069	751
								1%	1%	2%	1%	4%	3%
							grade 4 events	271	258	618	299	1043	603
								1%	1%	2%	1%	4%	2%
							grade 5 events	623	641	1846	694	2140	887
								3%	3%	6%	3%	9%	3%
							grade 6 events	417	400	5831	427	5119	1232
								2%	2%	19%	2%	22%	5%
							grade 7 events	16189	14583	11163	15689	10552	16969
								83%	82%	37%	82%	45%	72%

2.2 Compared Parameters

Parameter	Planned	Actual	Parameter	Planned	Actual
Instrument	ACIS	ACIS	Obspar format version number	7	7
Detector	ACIS-235678	ACIS-235678	Obspar file type	PREDICTED	ACTUAL
Grating	NONE	NONE	Obspar update status	NONE	UPDATED
Data mode	FAINT	FAINT	Number of optional ACIS chips dropped	0	0
Observation mode	POINTING	POINTING	On-chip summing requested	N	N
[deg] Pointing RA	187.704267	187.7120590843748	Subarray requested	CUSTOM	1/2
[deg] Pointing Dec	14.573774	14.54760655664008	Subarray start row	257	257
[deg] Pointing Roll	255.145175	255.2997222306656	Subarray row count	512	512
[mm] SIM focus pos	-0.684267	-0.6828225247311905	Alternating exposures requested	N	N
[mm] SIM defocus	0	0.001444936568705701	[s] Primary exposure time	0.000000	1.8
[mm] SIM translation stage pos	-190.132523	-190.1425803651734			
[mm] SIM translation stage offset	0	0.01005778216563158			
[s] Observation start time (MET)	143665366.184000	143664026.23267			
Observation start date	2002-07-21T19:01:42	2002-07-21T18:40:26			
[s] Observation end time (MET)	143670266.184000	143670404.80793			
Observation end date	2002-07-21T20:23:22	2002-07-21T20:26:44			
Read mode	TIMED	TIMED			

2.3 Aspect



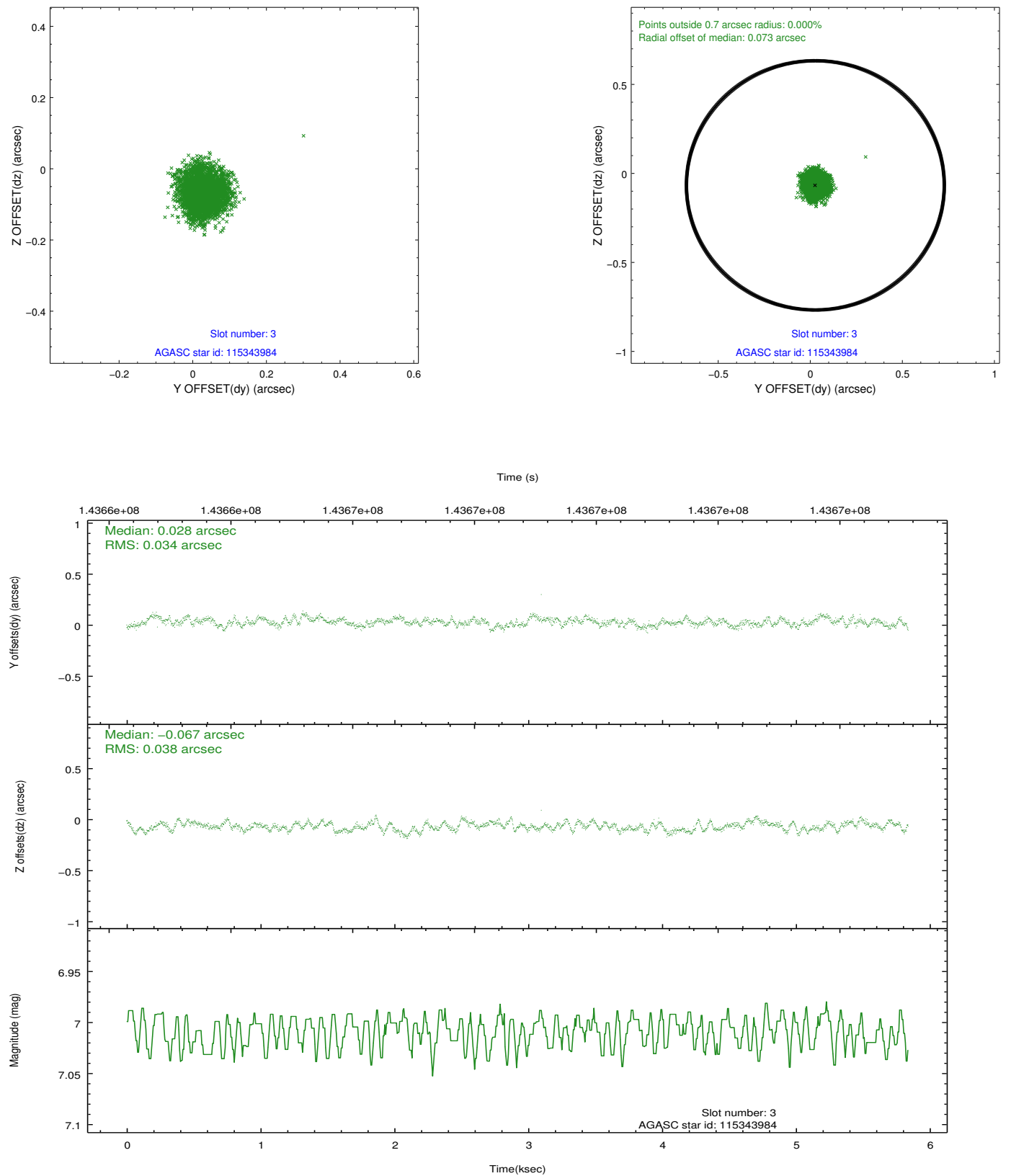


Slot Statistics

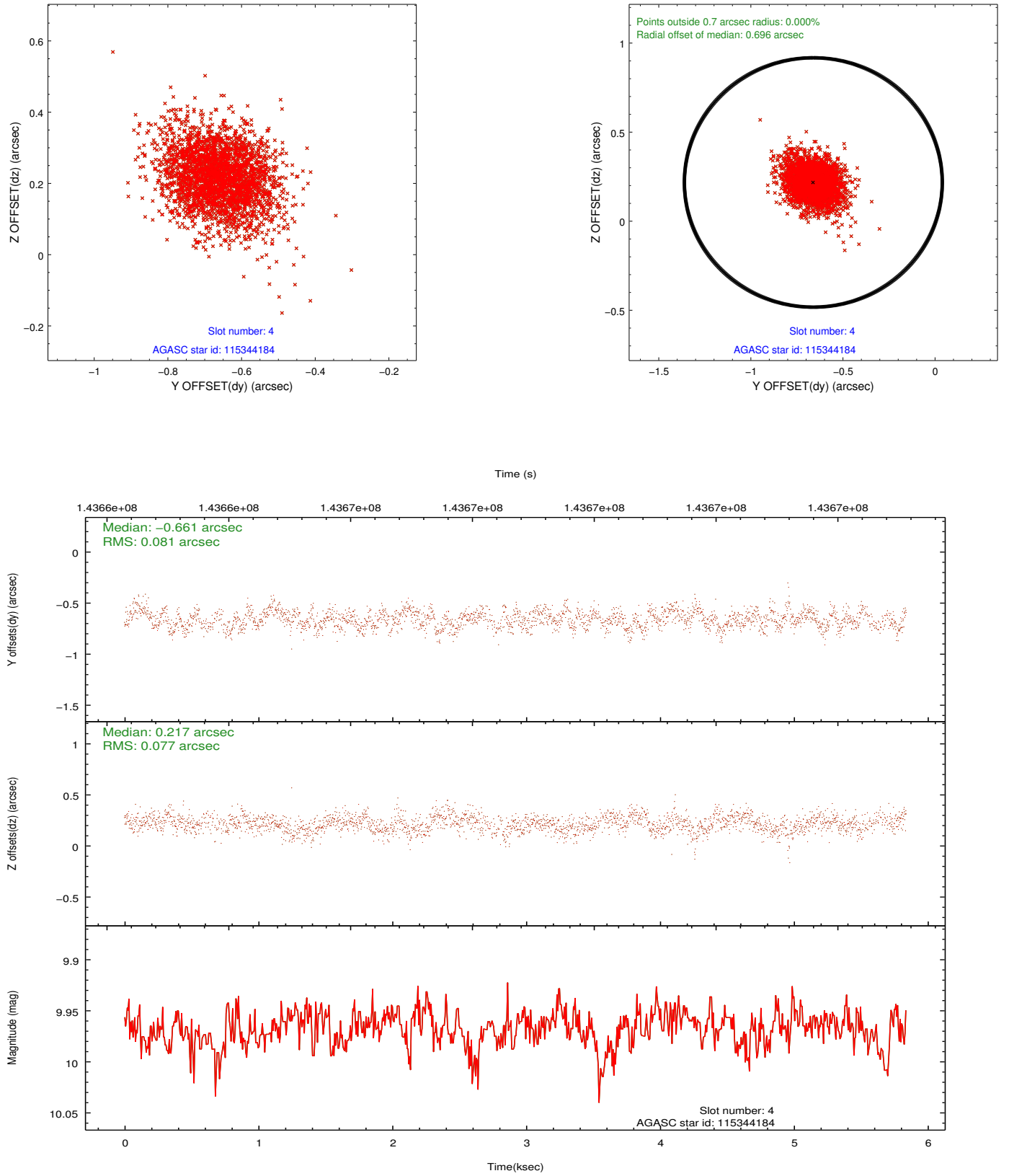
slot	status	id	mag	n_pts	med_dy	med_dz	dr1	dr2	ra	dec	mean_y	mean_z
0	FID	ACIS-S-2	7.10	1424	-0.005	0.006	0.007	0.012	0.000000	0.000000	-755.12	-1729.37
1	FID	ACIS-S-4	7.20	1423	-0.042	0.001	0.006	0.010	0.000000	0.000000	2157.68	178.02
2	FID	ACIS-S-5	7.23	1423	0.016	0.002	0.006	0.012	0.000000	0.000000	-1806.60	172.90
3	GUIDE	115343984	7.01	2847	0.028	-0.067	0.055	0.085	187.445111	14.650185	-34.10	-943.42
4	BAD	115344184	9.97	2721	-0.661	0.217	0.115	0.194	188.223378	14.673173	-810.78	1654.46
5	GUIDE	115344368	10.29	2846	0.321	-0.324	0.143	0.231	187.412928	14.132996	1794.72	-576.05
6	GUIDE	115345056	9.44	2847	0.378	0.090	0.097	0.154	187.860673	14.574305	-140.05	525.76
7	GUIDE	189399616	10.55	2826	-0.100	0.092	0.147	0.251	187.345601	15.111891	-1553.03	-1701.92

2.4 Star Slots

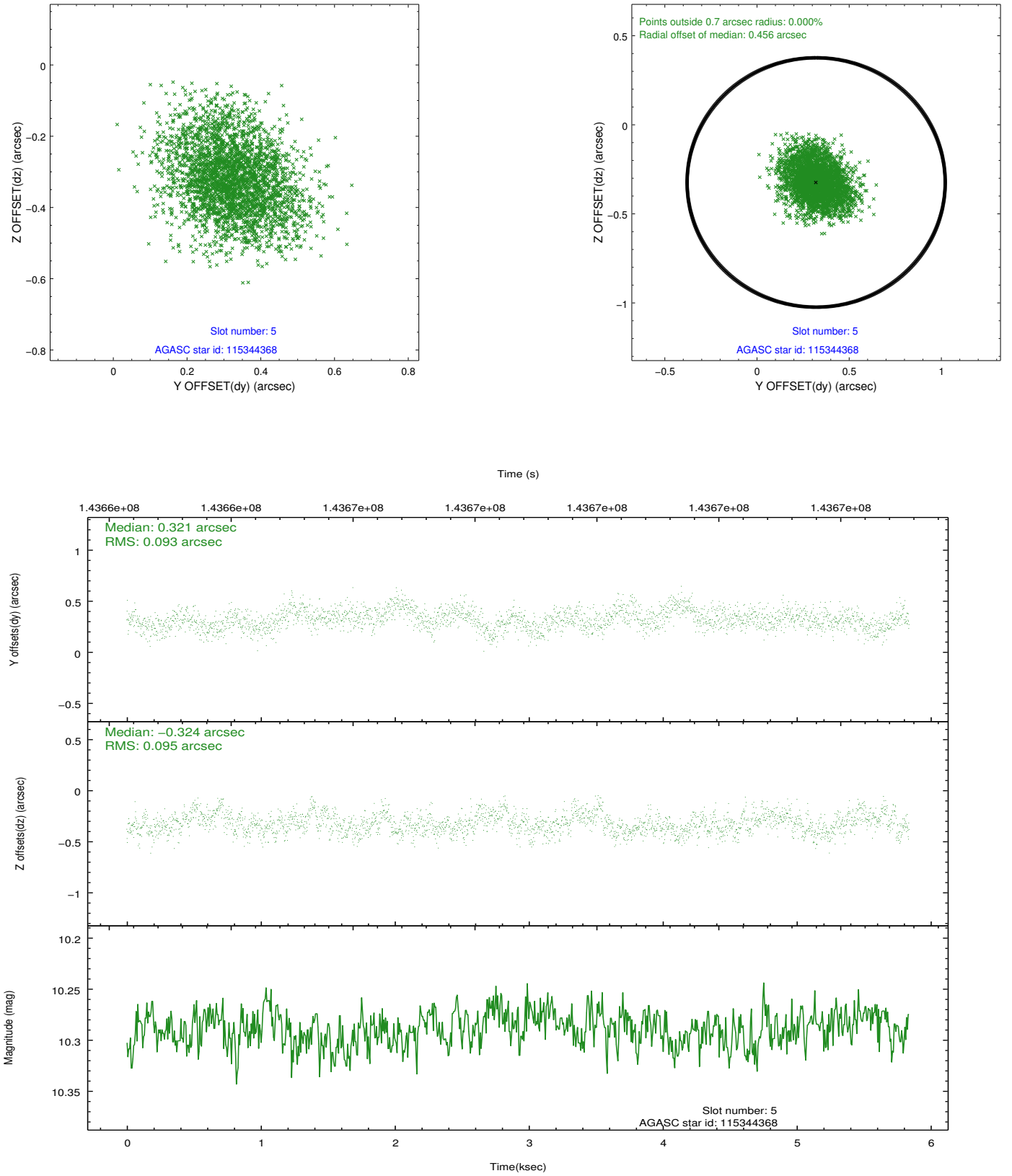
2.4.1 Slot 3



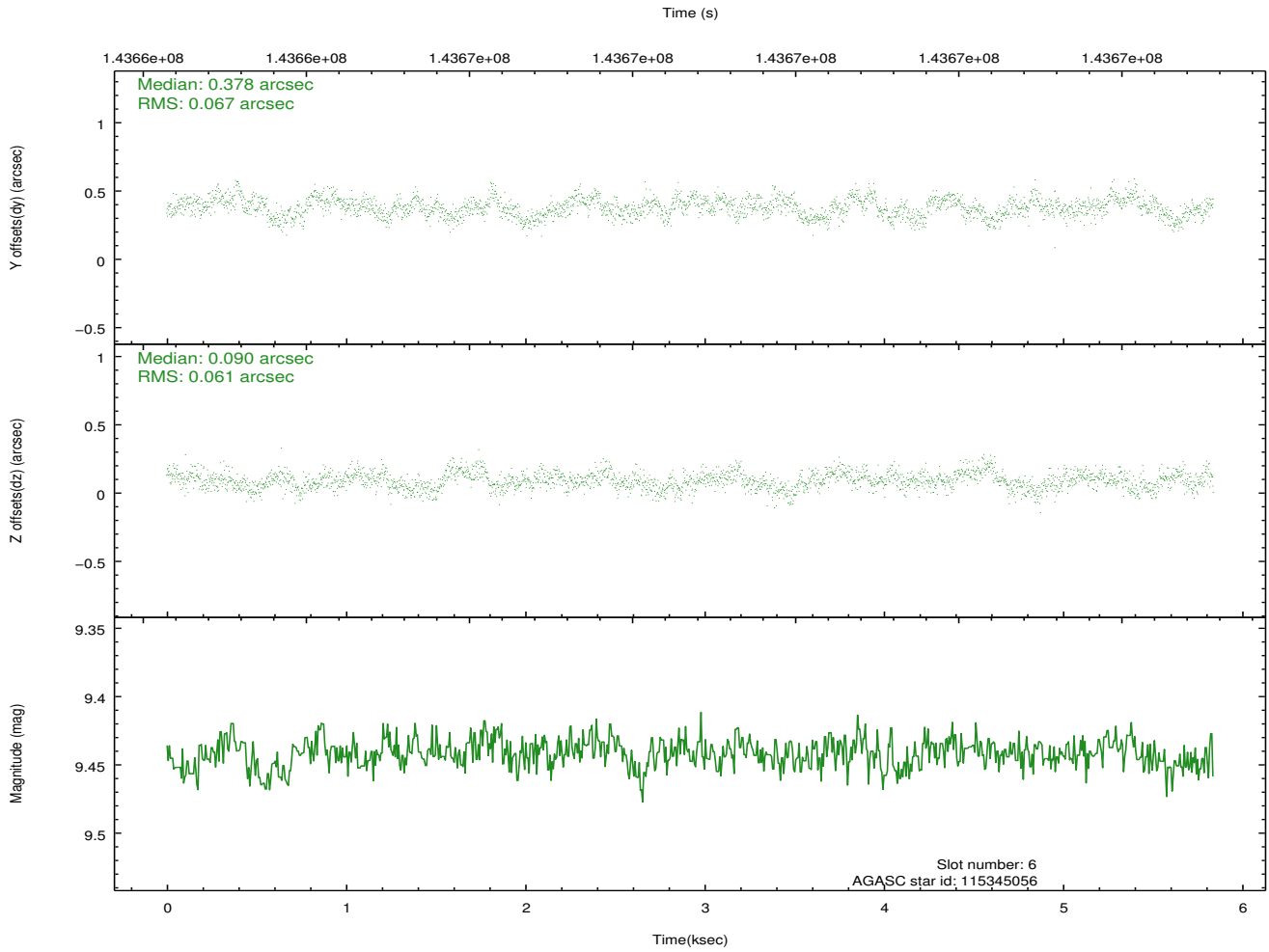
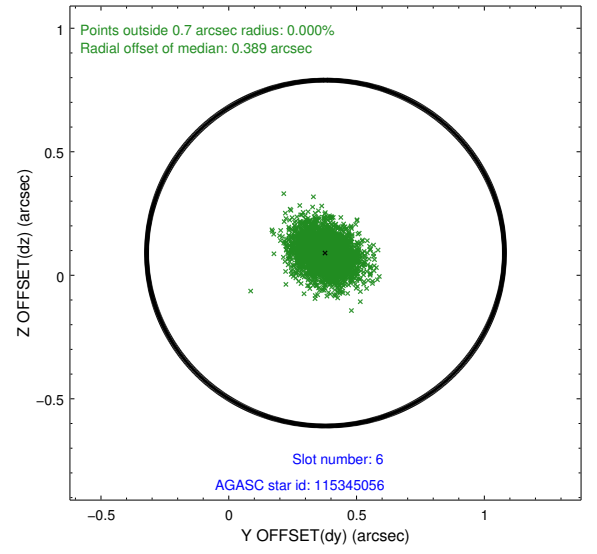
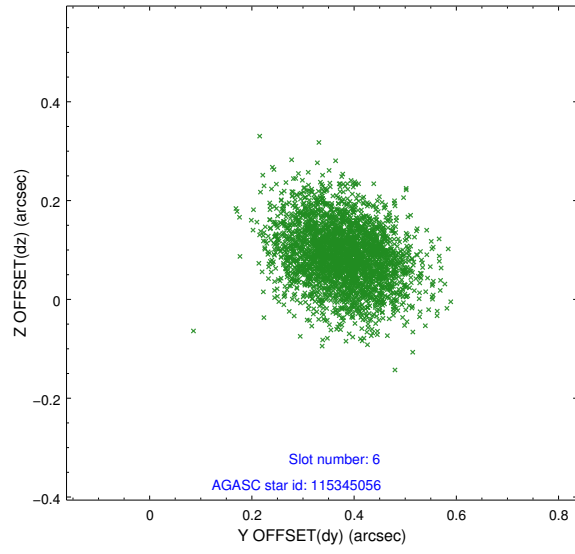
2.4.2 Slot 4



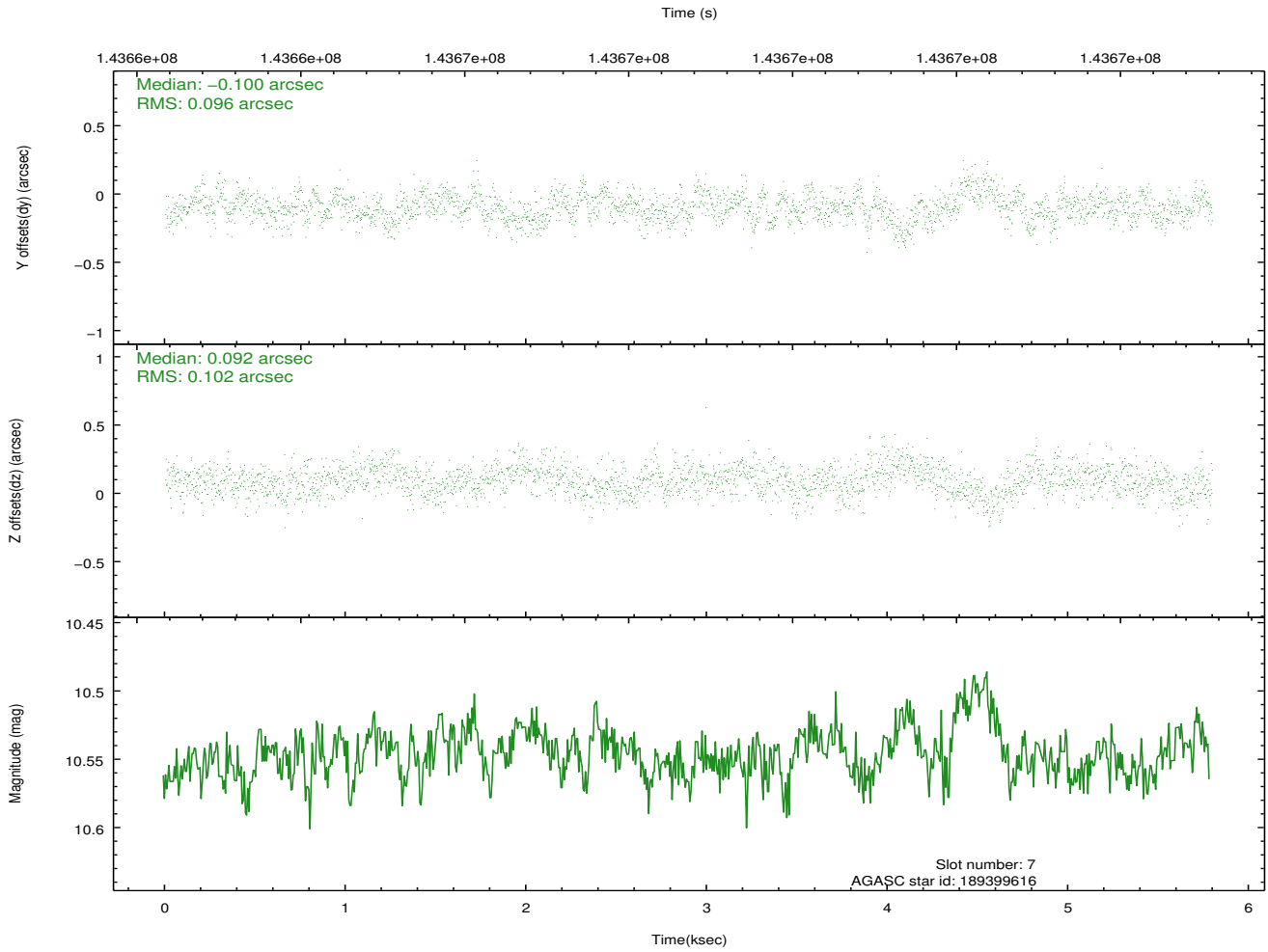
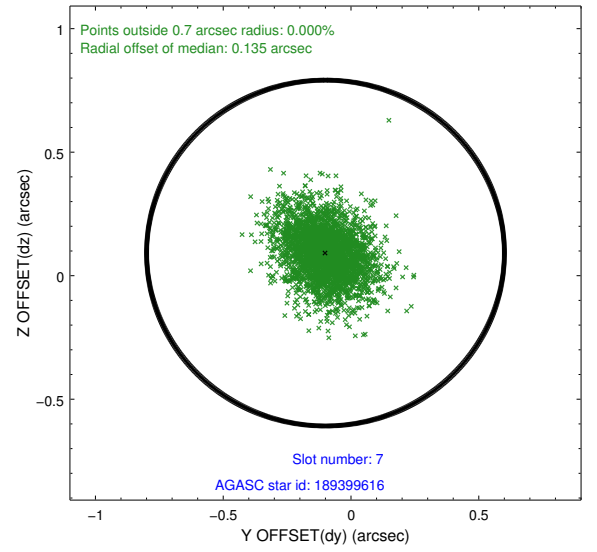
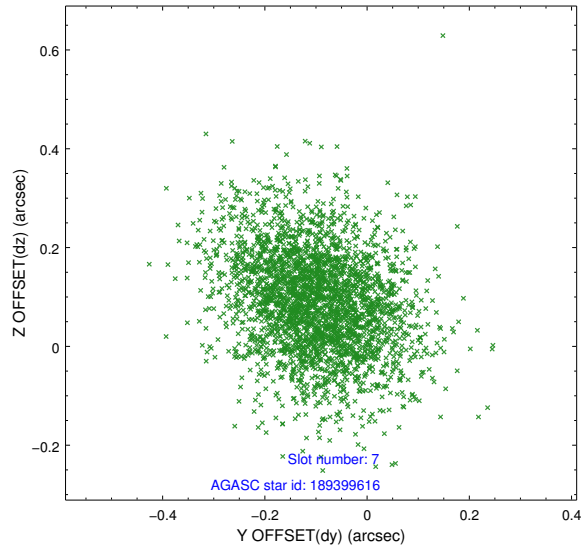
2.4.3 Slot 5



2.4.4 Slot 6

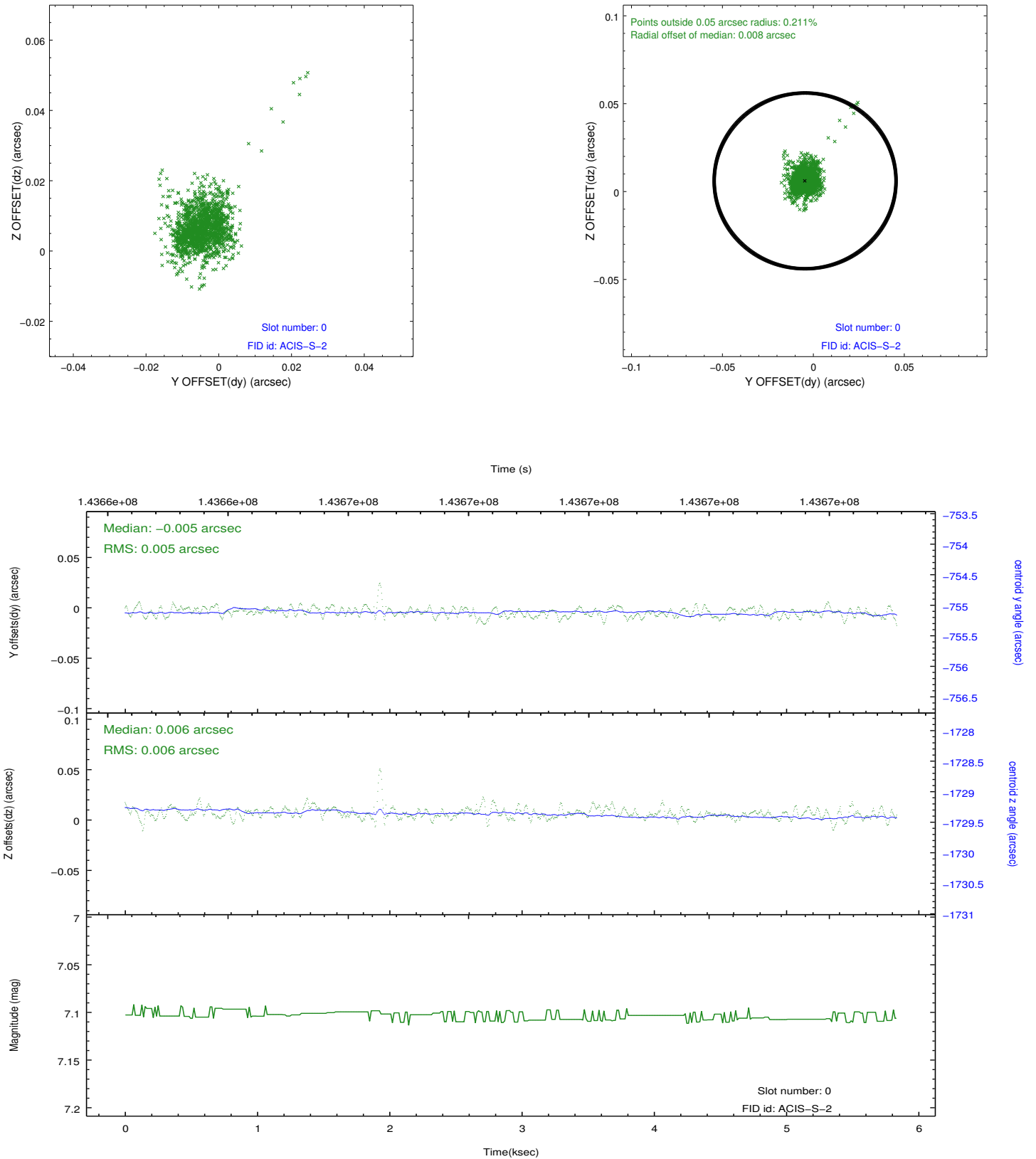


2.4.5 Slot 7

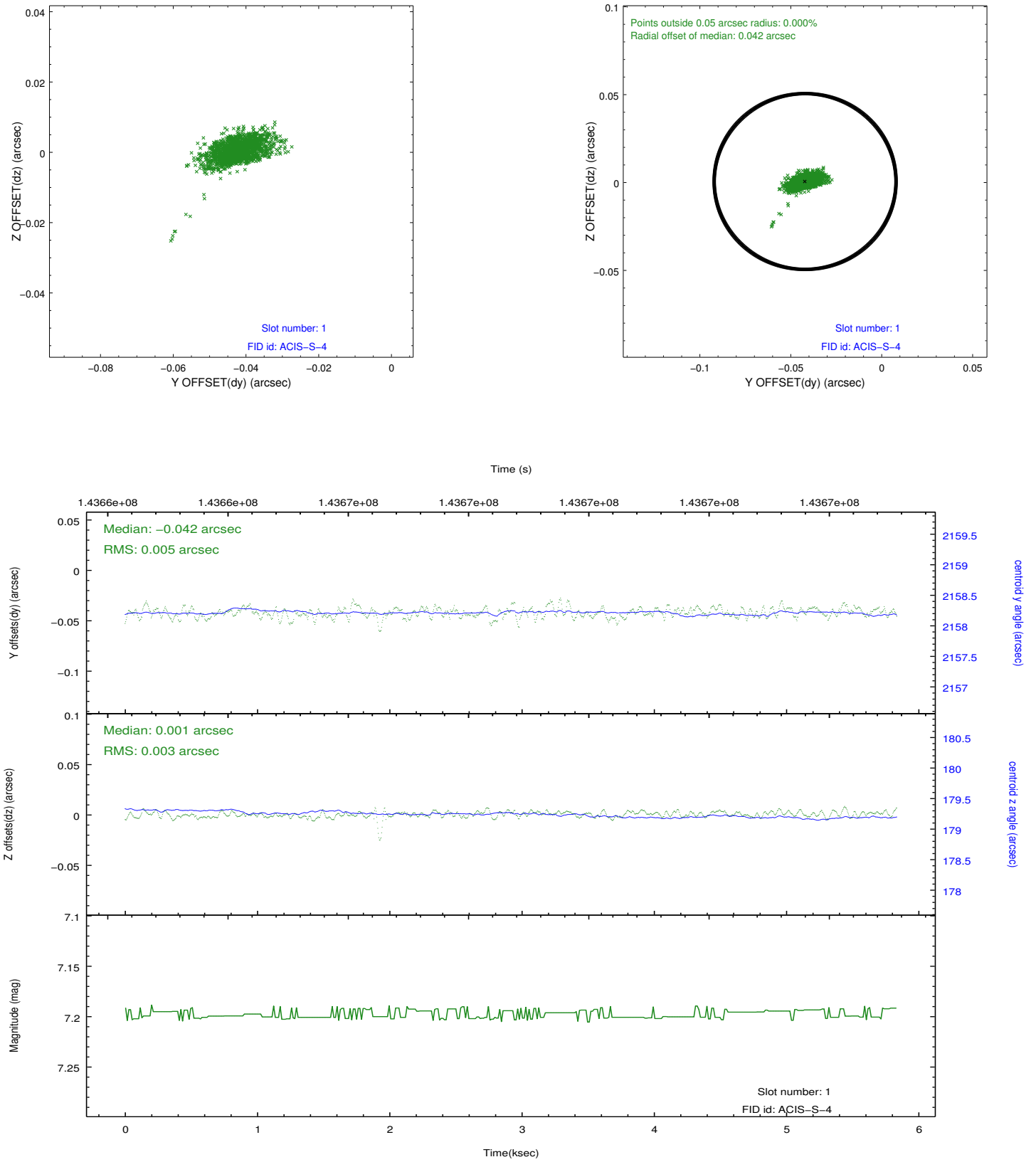


2.5 FID Slots

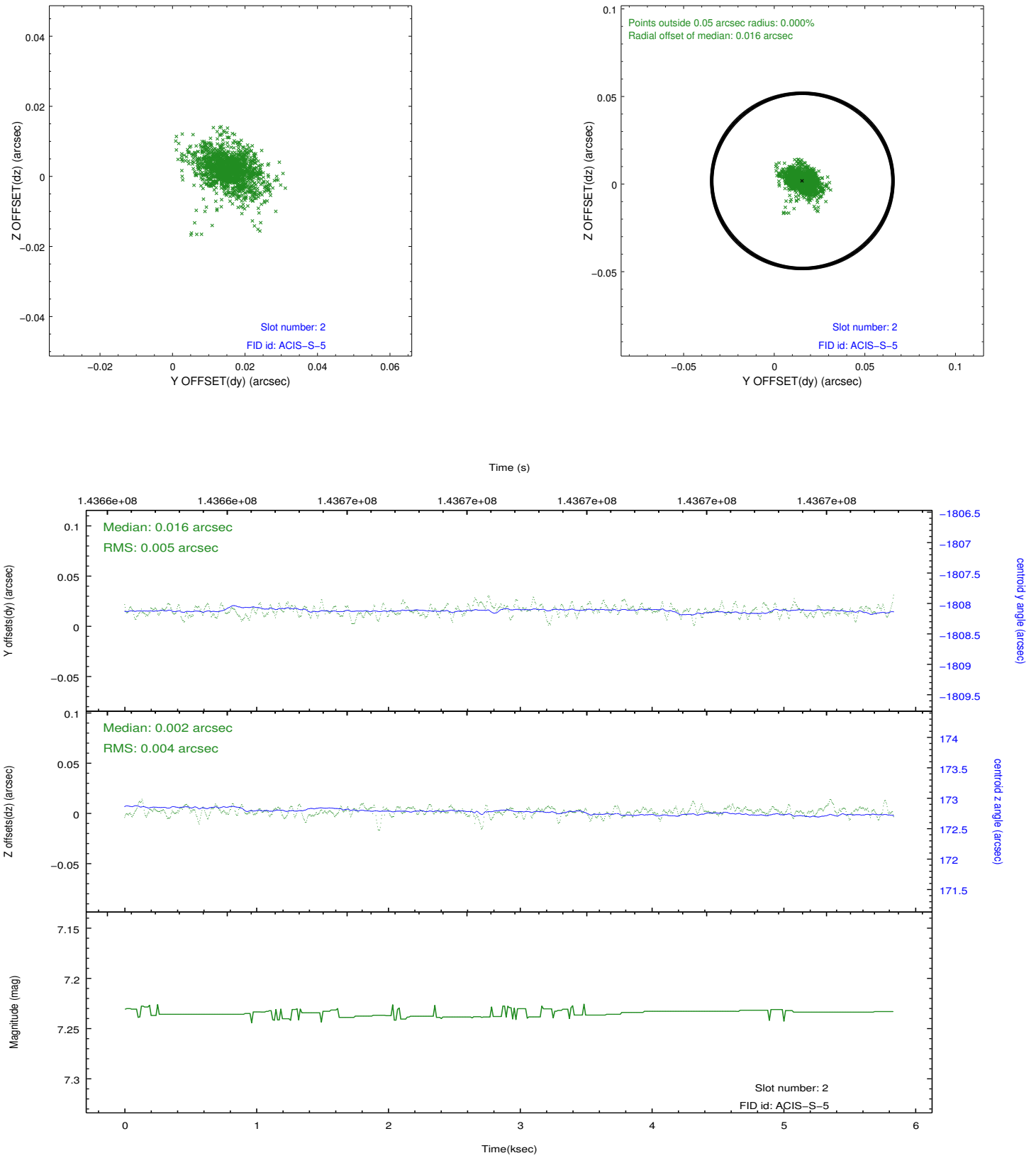
2.5.1 Slot 0



2.5.2 Slot 1



2.5.3 Slot 2



A Summary

A.1 Status

V&V Scientist	Joy Nichols
V&V Date (YYYY-MM-DD)	2012.10.26
V&V Edition	1
V&V Disposition and Status	OK
V&V Charge Time	5.302

A.2 Comments