

V&V Reference Report

L2 ASCDS Version : 8.4.5

Observation 3253 - L2 Version 3
Chandra X-Ray Center

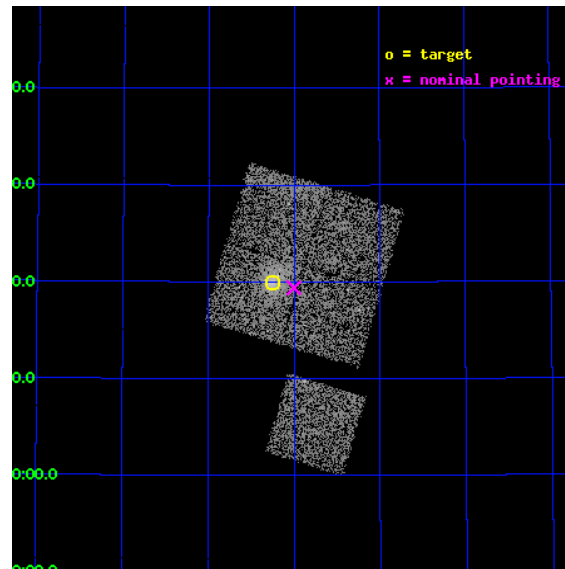
L2 Processing Date : Oct 4 2012

Contents

1	Front	2
2	OBI	3
2.1	OBI	3
2.1.1	Images	3
2.1.2	Bias	3
2.1.3	Parameters	4
2.1.4	Events	4
2.2	Compared Parameters	5
2.3	Aspect	6
2.4	Star Slots	9
2.4.1	Slot 3	9
2.4.2	Slot 4	10
2.4.3	Slot 5	11
2.4.4	Slot 6	12
2.4.5	Slot 7	13
2.5	FID Slots	14
2.5.1	Slot 0	14
2.5.2	Slot 1	15
2.5.3	Slot 2	16
A	Summary	17
A.1	Status	17
A.2	Comments	17

1 Front

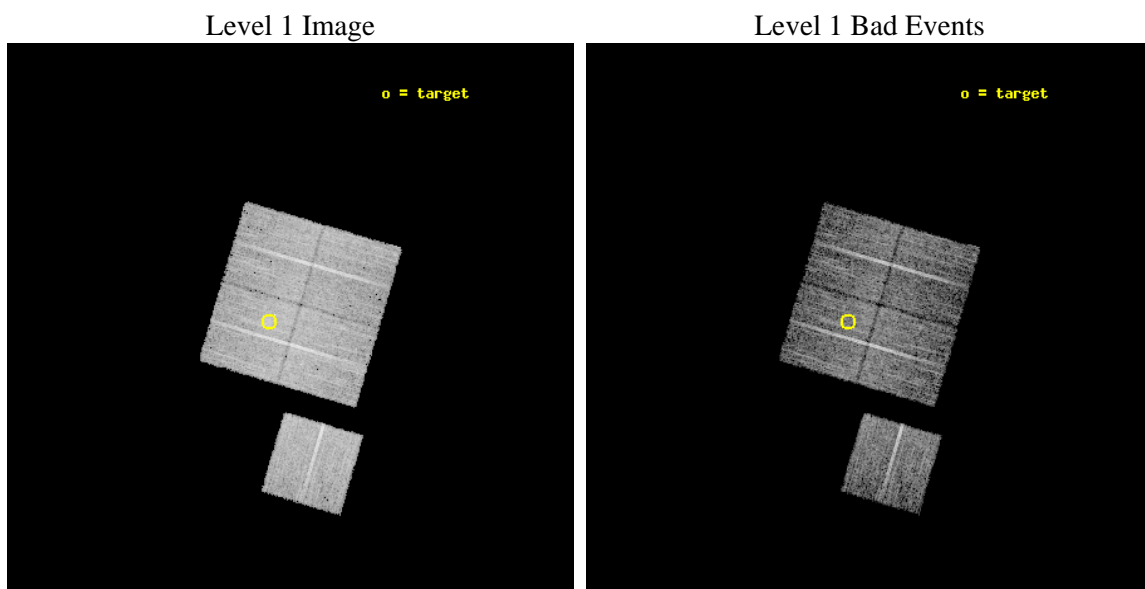
seq_num	800253	Sequence number
obs_id	3253	Observation id
title	OBSERVATION OF MACS CLUSTERS, 0.45	Proposal titl
observer	DR. LEON VANSPEYBROECK	Principal investigator
object	MACS-J1115.2+5320	Source name
dtcycle	0	
cycle	P	events from which exps? Prim/Second/Both
ra_targ	168.812083	Observer's specified target RA [deg]
dec_targ	53.331944	Observer's specified target Dec [deg]
ra_nom	168.75070782048	Nominal RA [deg]
dec_nom	53.323133202942	Nominal Dec [deg]
roll_nom	196.5001778605	Nominal Roll [deg]
revision	3	Processing version of data
ontime	8893.8180423677	Sum of GTIs [s]
livetime	8777.6137621106	Livetime [s]
ontime0	8896.9589827061	Sum of GTIs [s]
ontime1	8900.0999828875	Sum of GTIs [s]
ontime2	8900.0999828875	Sum of GTIs [s]
ontime3	8893.8180423677	Sum of GTIs [s]
ontime6	8881.2540817112	Sum of GTIs [s]
l2events	22204	Number of level 2 events



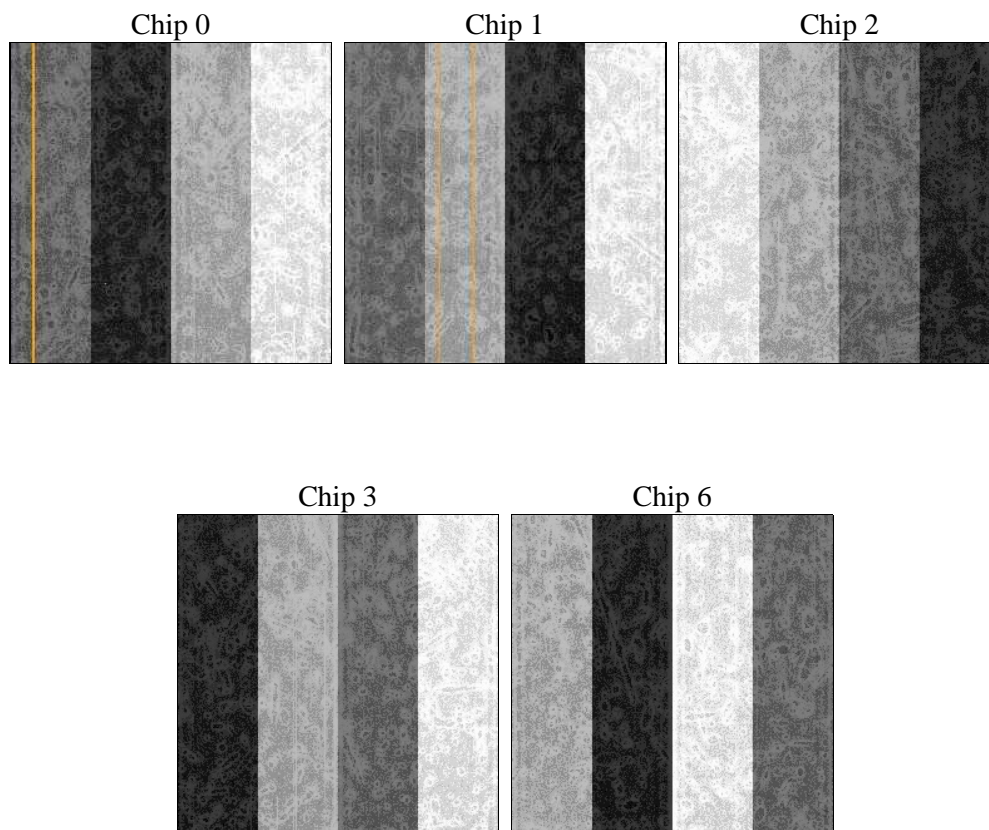
2 OBI

2.1 OBI

2.1.1 Images



2.1.2 Bias



2.1.3 Parameters

obi_num	1	Obi number	sched_exp_time	9000.000000	[s] Scheduled observation exposure time
ascdsver	8.4.5	Processing system revision	ontime	8893.8180423677	Sum of GTIs [s]
caldsver	4.5.2	 	ontime0	8896.9589827061	Sum of GTIs [s]
date	2012-10-04T11:56:58	Date and time of file creation	ontime1	8900.0999828875	Sum of GTIs [s]
revision	3	Processing version of data	ontime2	8900.0999828875	Sum of GTIs [s]
			ontime3	8893.8180423677	Sum of GTIs [s]
			ontime6	8881.2540817112	Sum of GTIs [s]
			l1events	266204	Number of level 1 events

2.1.4 Events

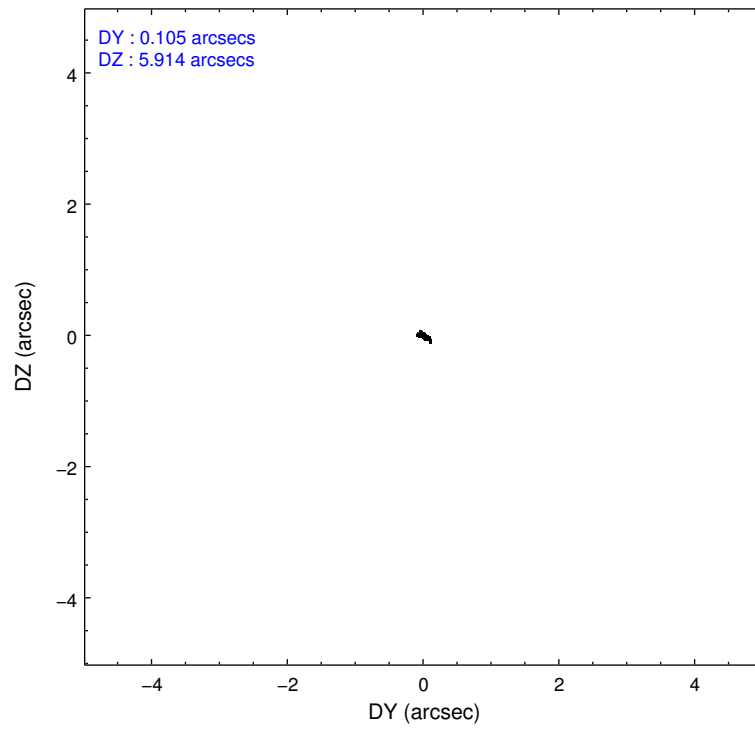
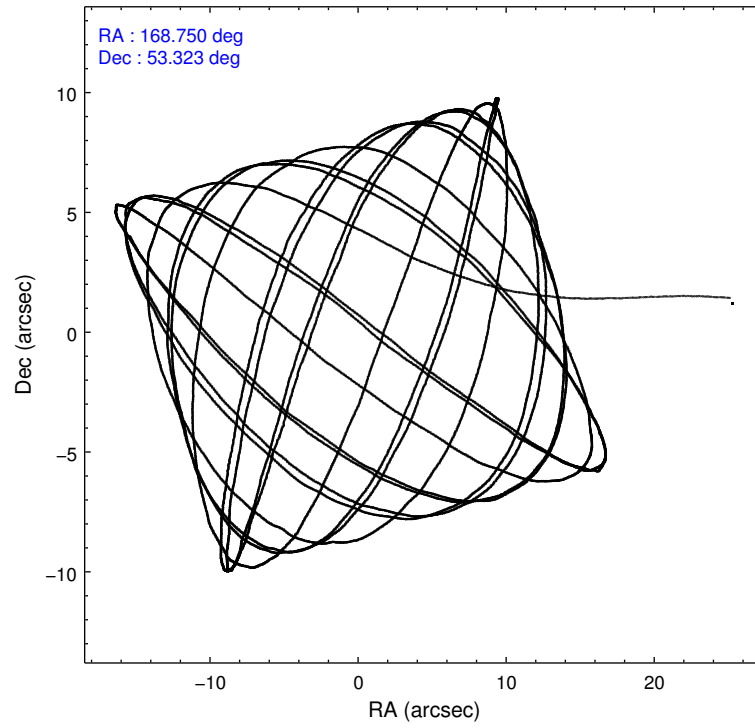
	ccd 0	ccd 1	ccd 2	ccd 3	ccd 6
level 1 events	47098	50534	56801	56217	55554
rejected events	41567	44955	50140	49382	49942
rejected %	88%	88%	88%	87%	89%

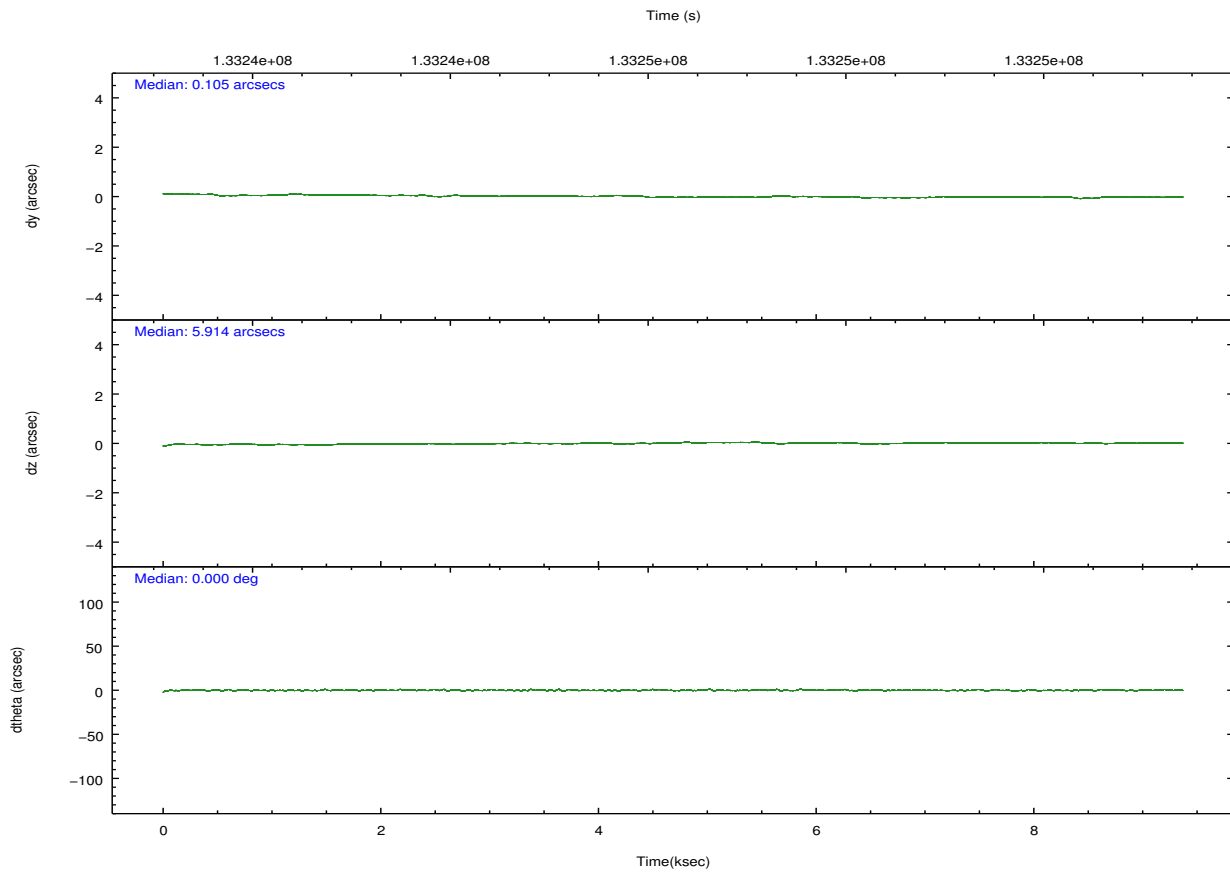
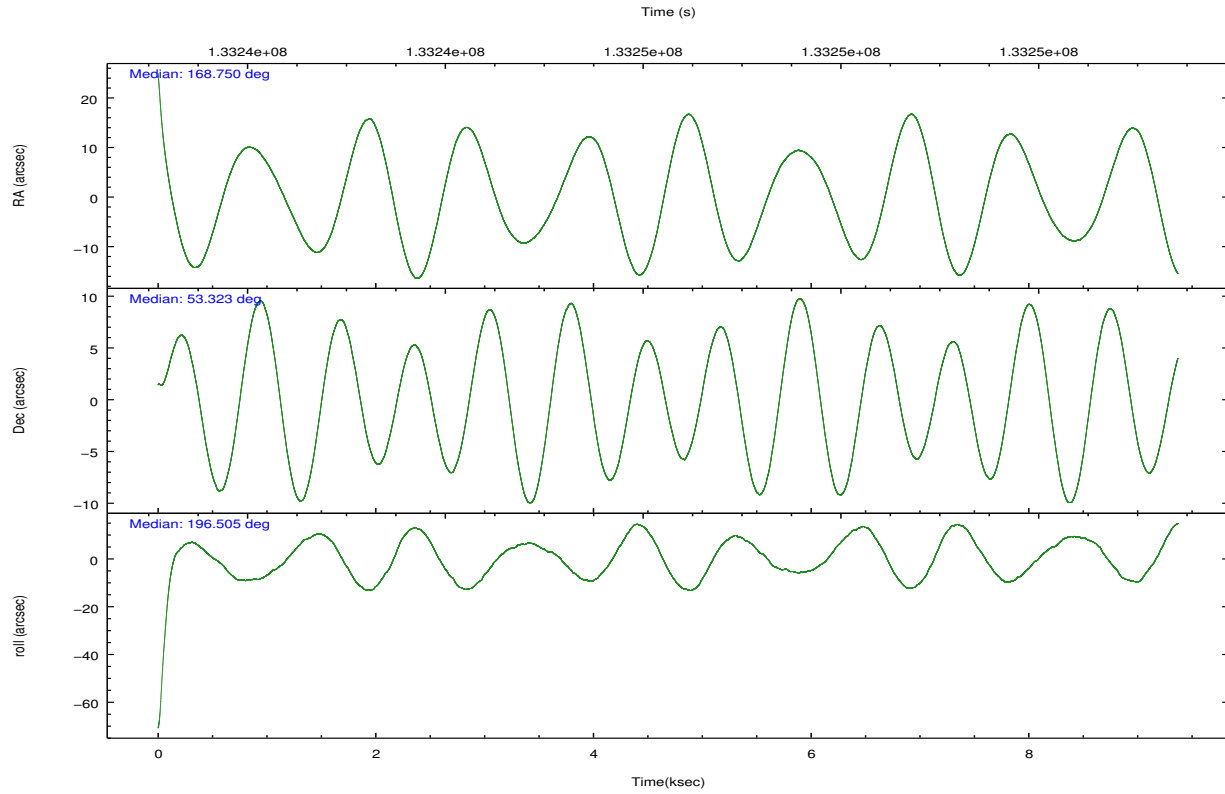
	ccd 0	ccd 1	ccd 2	ccd 3	ccd 6
grade 0 events	1998	2084	2742	3503	2103
	4%	4%	4%	6%	3%
grade 1 events	10	24	24	28	24
	0%	0%	0%	0%	0%
grade 2 events	1607	1333	1809	1250	1540
	3%	2%	3%	2%	2%
grade 3 events	536	607	505	589	501
	1%	1%	0%	1%	0%
grade 4 events	498	576	619	568	535
	1%	1%	1%	1%	0%
grade 5 events	1422	1593	1391	1604	1627
	3%	3%	2%	2%	2%
grade 6 events	893	982	986	929	933
	1%	1%	1%	1%	1%
grade 7 events	40134	43335	48725	47746	48291
	85%	85%	85%	84%	86%

2.2 Compared Parameters

Parameter	Planned	Actual	Parameter	Planned	Actual
Instrument	ACIS	ACIS	Obspar format version number	7	7
Detector	ACIS-01236	ACIS-01236	Obspar file type	PREDICTED	ACTUAL
Grating	NONE	NONE	Obspar update status	NONE	UPDATED
Data mode	VFAINT	VFAINT	Number of optional ACIS chips dropped	0	0
Observation mode	POINTING	POINTING	On-chip summing requested	N	N
[deg] Pointing RA	168.782228	168.7507078204848	Subarray requested	NONE	NONE
[deg] Pointing Dec	53.343072	53.32313320294203	Alternating exposures requested	N	N
[deg] Pointing Roll	196.266276	196.5001778604983	[s] Primary exposure time	0.000000	3.1
[mm] SIM focus pos	-0.782348	-0.7809083437167272			
[mm] SIM defocus	0	0.001439871863259334			
[mm] SIM translation stage pos	-227.742463	-227.734108438797			
[mm] SIM translation stage offset	-5.85	-5.858344564132665			
[s] Observation start time (MET)	133241939.184000	133240887.93221			
Observation start date	2002-03-23T03:37:55	2002-03-23T03:21:27			
[s] Observation end time (MET)	133250939.184000	133251666.32015			
Observation end date	2002-03-23T06:07:55	2002-03-23T06:21:06			
Read mode	TIMED	TIMED			

2.3 Aspect



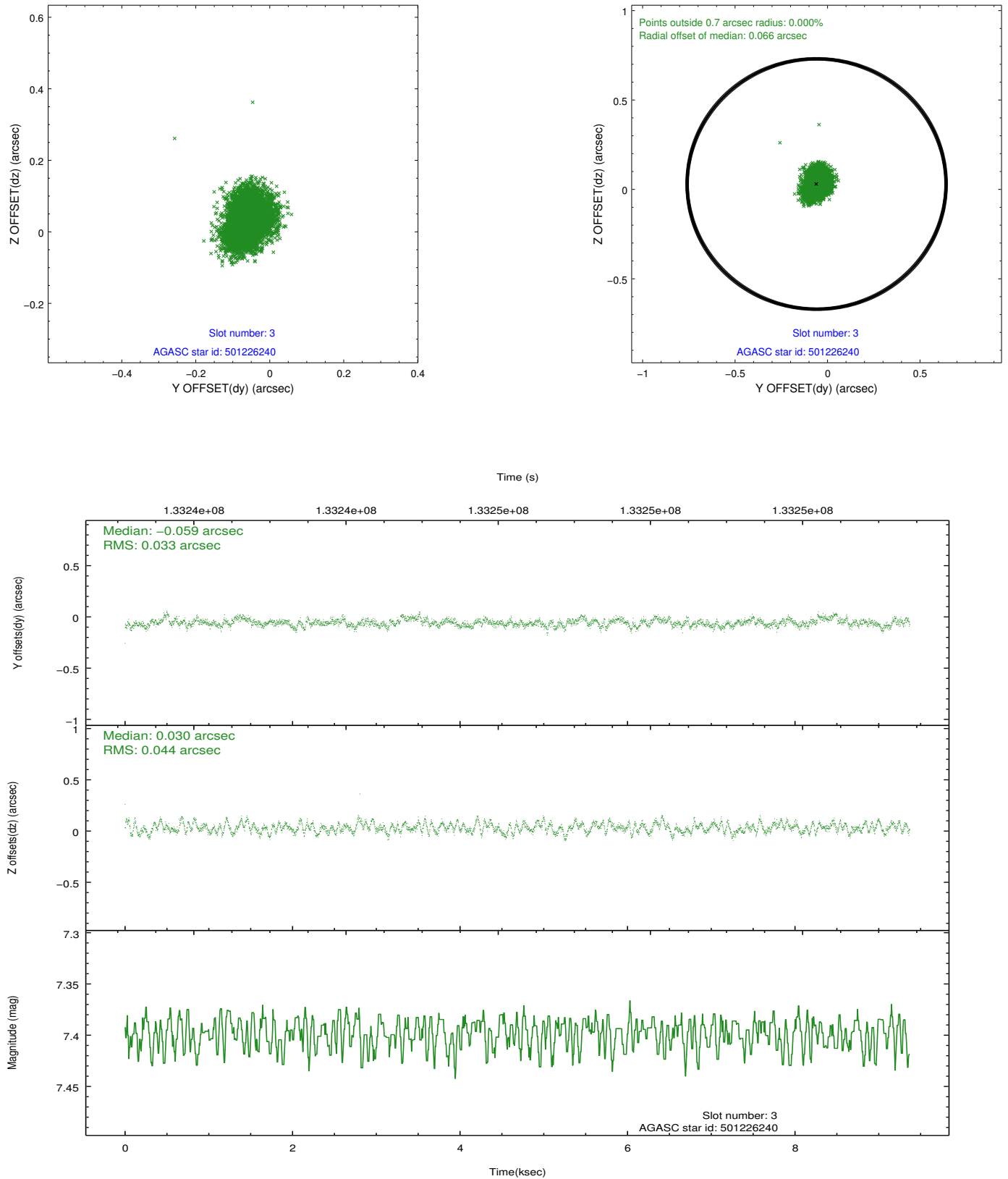


Slot Statistics

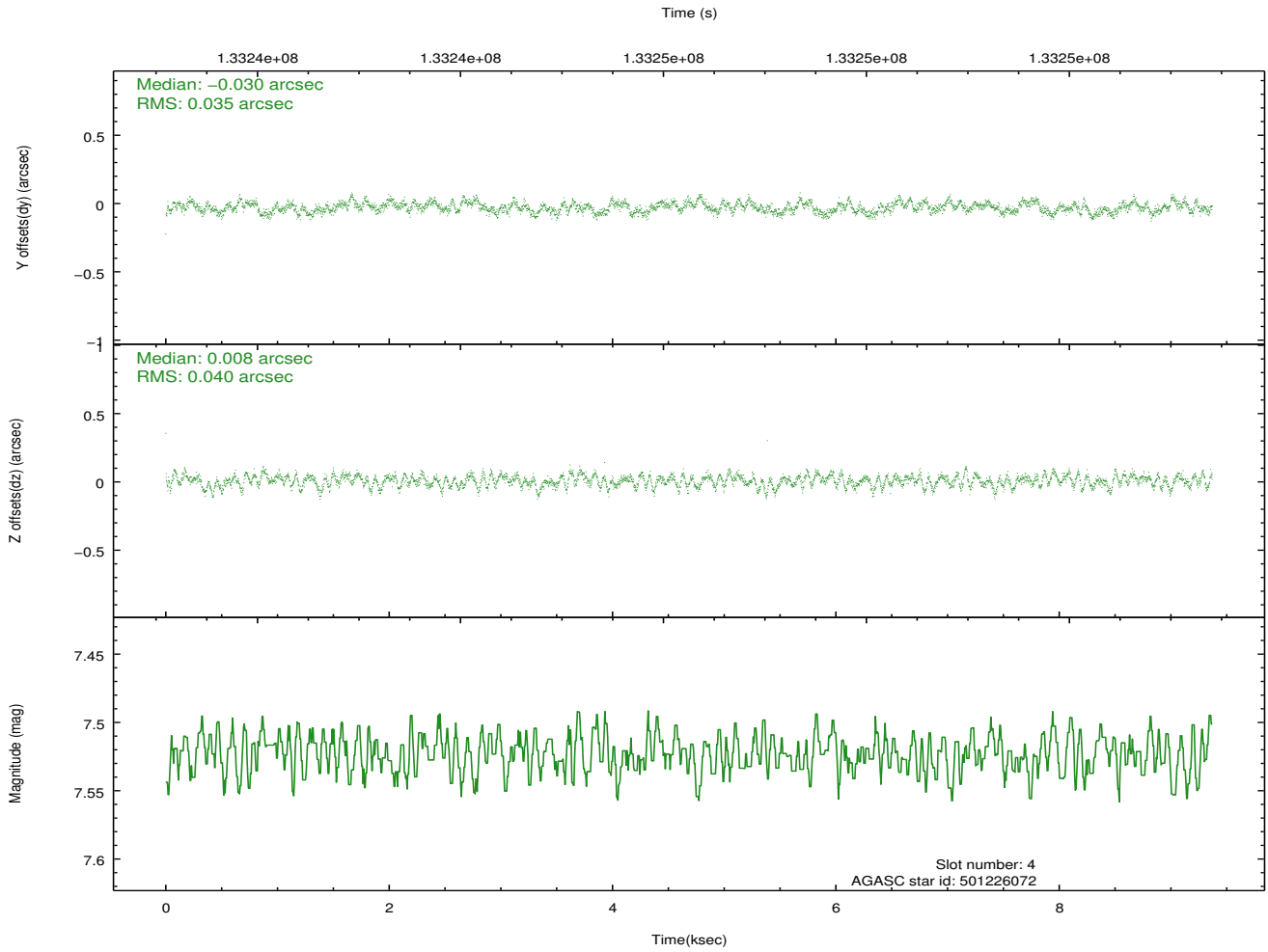
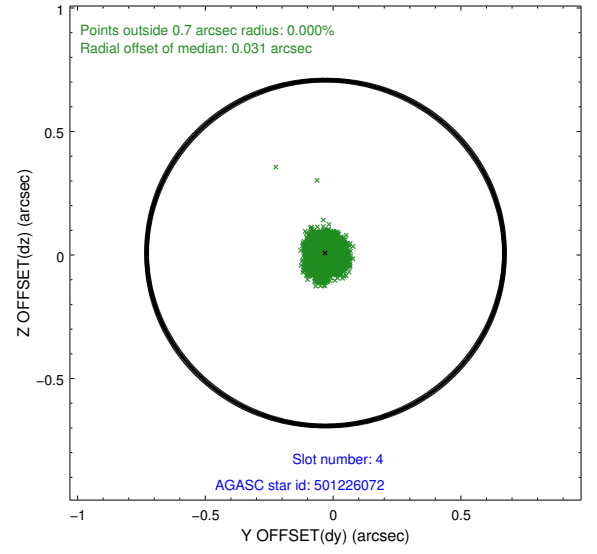
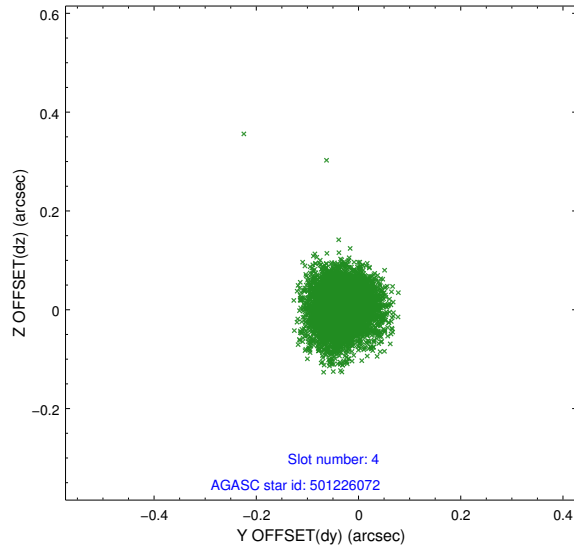
slot	status	id	mag	n_pts	med_dy	med_dz	dr1	dr2	ra	dec	mean_y	mean_z
0	FID	ACIS-I-1	7.25	2286	0.078	-0.027	0.006	0.012	0.000000	0.000000	939.69	-949.57
1	FID	ACIS-I-5	7.23	2286	-0.193	0.089	0.007	0.011	0.000000	0.000000	-1808.29	947.79
2	FID	ACIS-I-6	7.26	2286	0.024	0.008	0.007	0.011	0.000000	0.000000	404.65	1592.79
3	GUIDE	501226240	7.40	4572	-0.059	0.030	0.058	0.093	168.639140	52.946889	695.82	1281.89
4	GUIDE	501226072	7.52	4572	-0.030	0.008	0.057	0.091	168.396705	52.850484	1299.46	1465.52
5	GUIDE	501221576	8.08	4572	0.091	0.003	0.050	0.082	168.270365	53.371526	1024.38	-409.94
6	GUIDE	501224736	8.66	4571	0.053	-0.065	0.058	0.093	167.843158	53.060877	2229.93	393.04
7	GUIDE	501359640	8.89	4568	-0.054	0.027	0.062	0.101	169.787525	53.309283	-2047.01	708.00

2.4 Star Slots

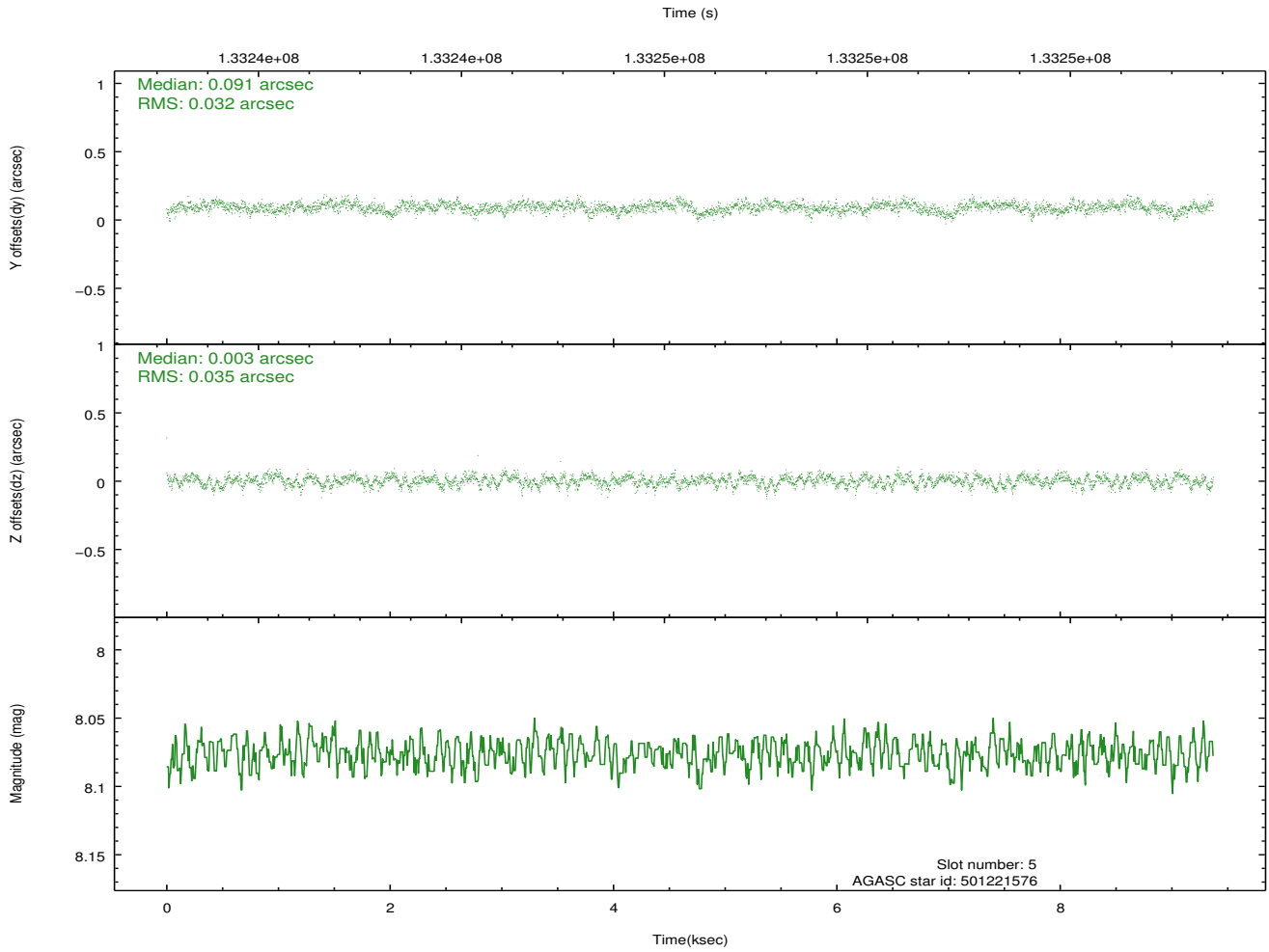
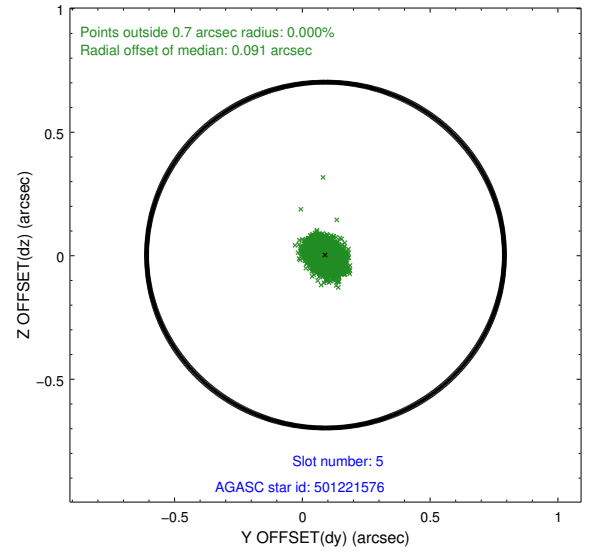
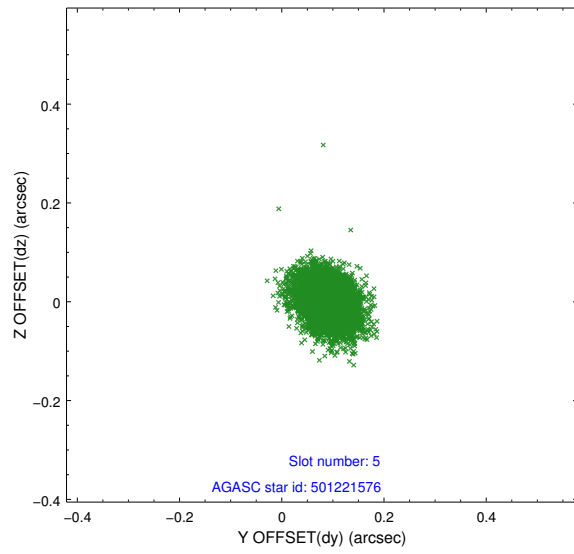
2.4.1 Slot 3



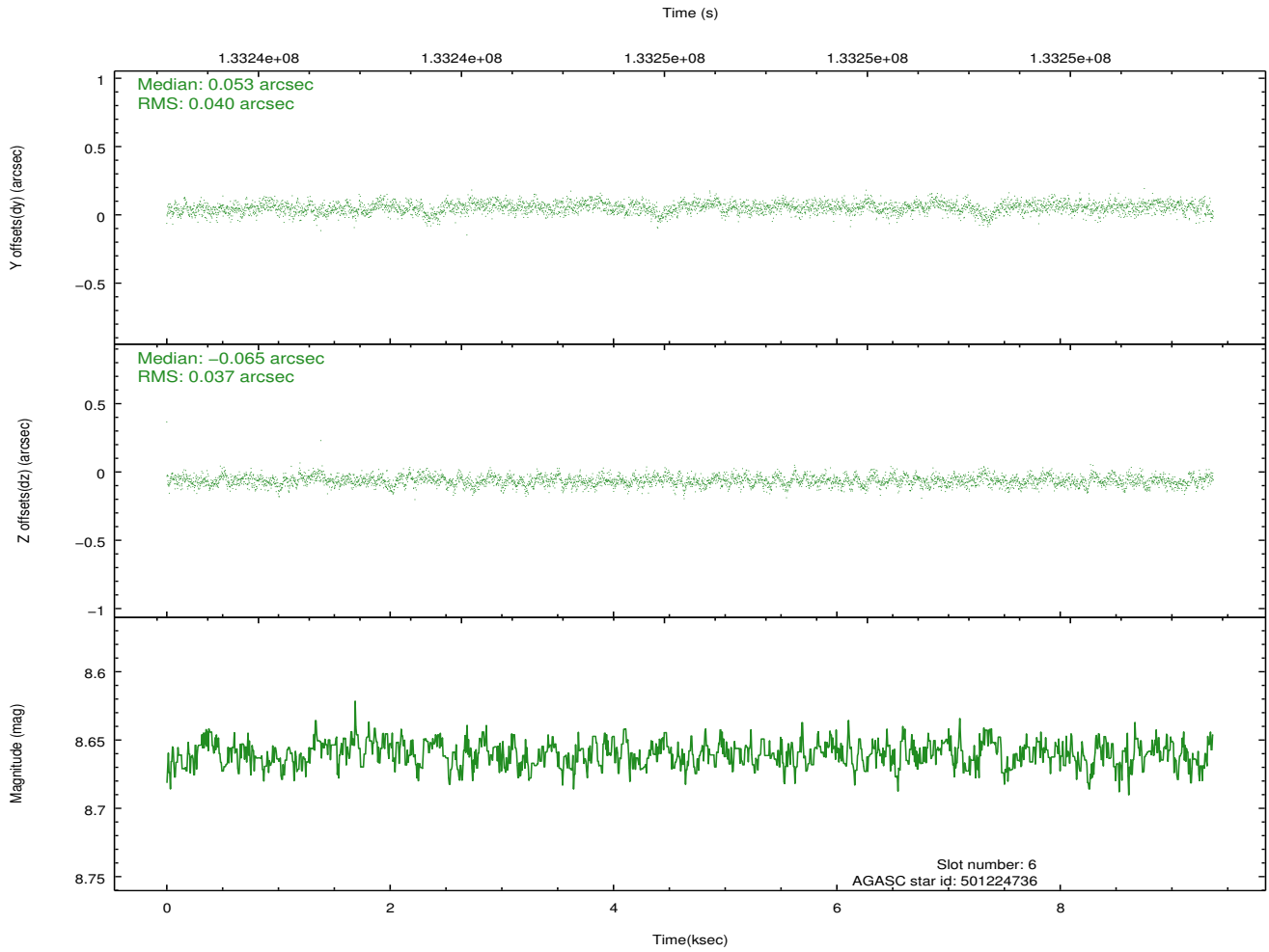
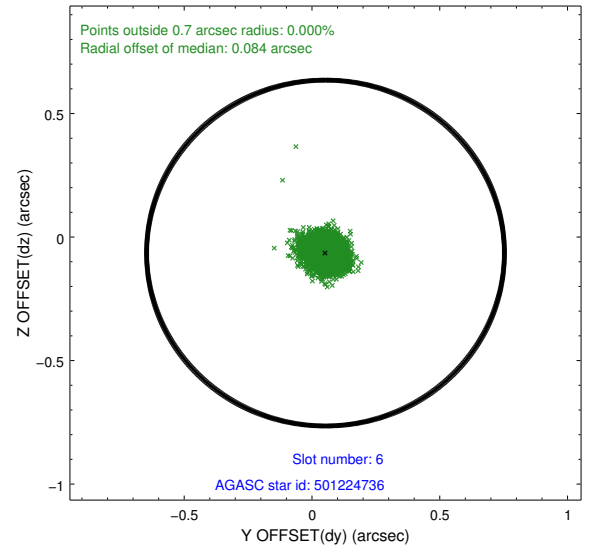
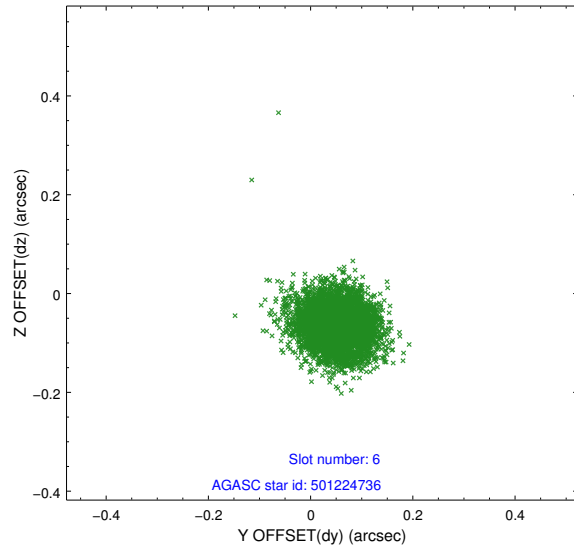
2.4.2 Slot 4



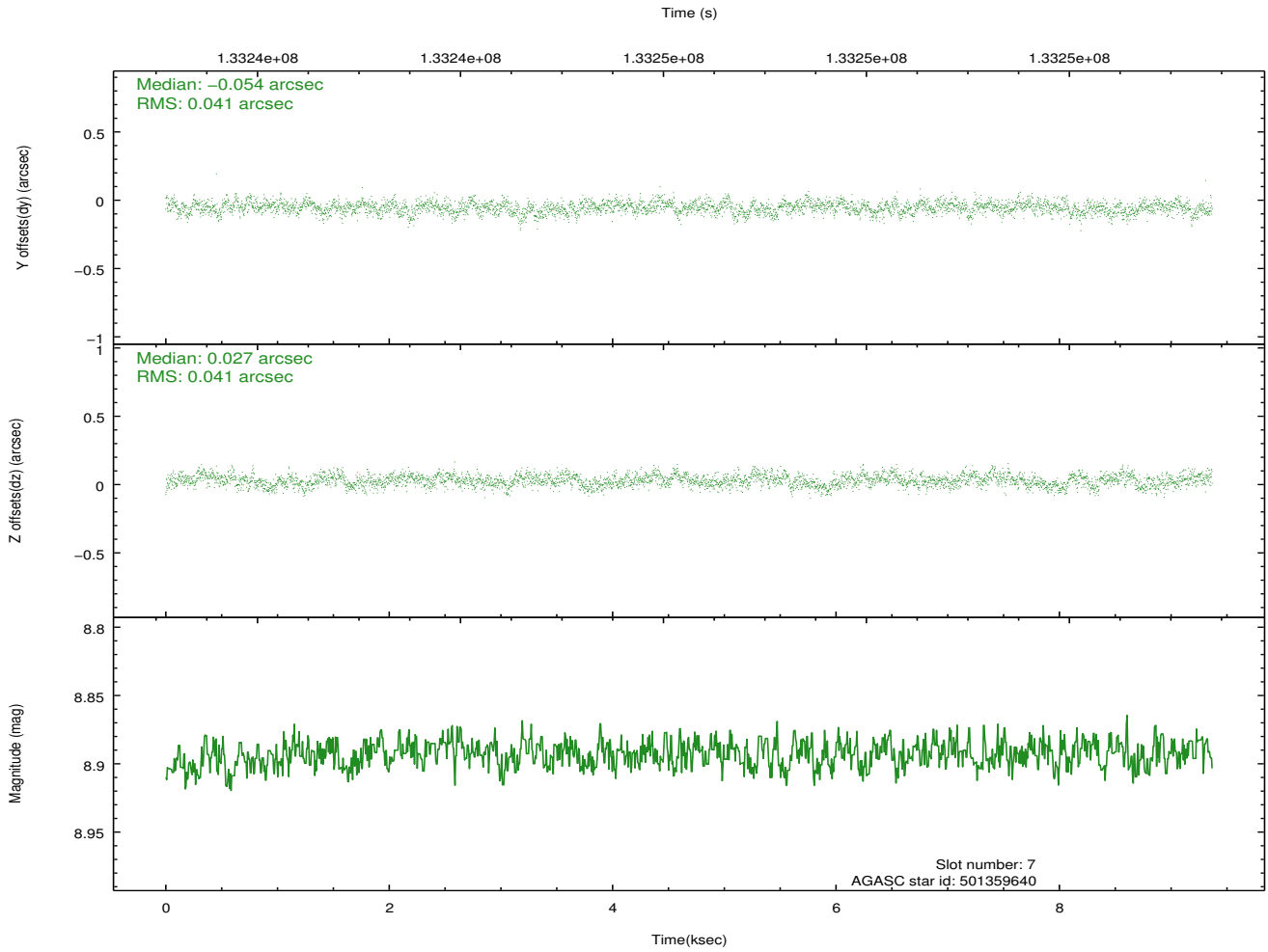
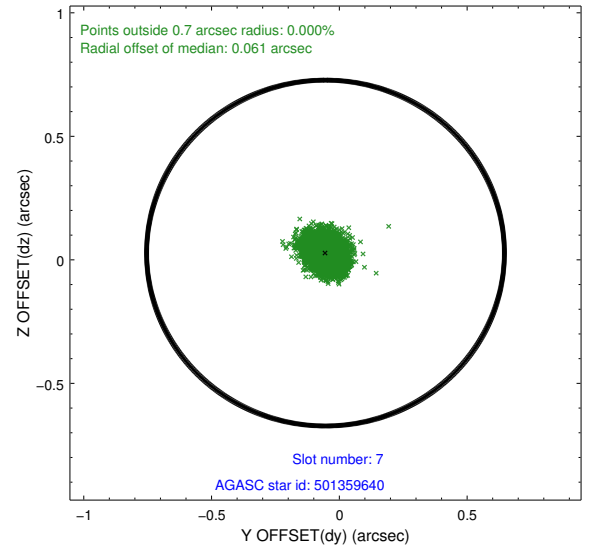
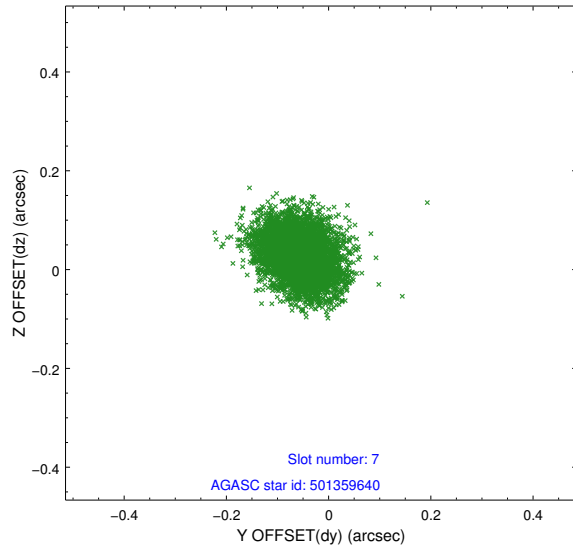
2.4.3 Slot 5



2.4.4 Slot 6

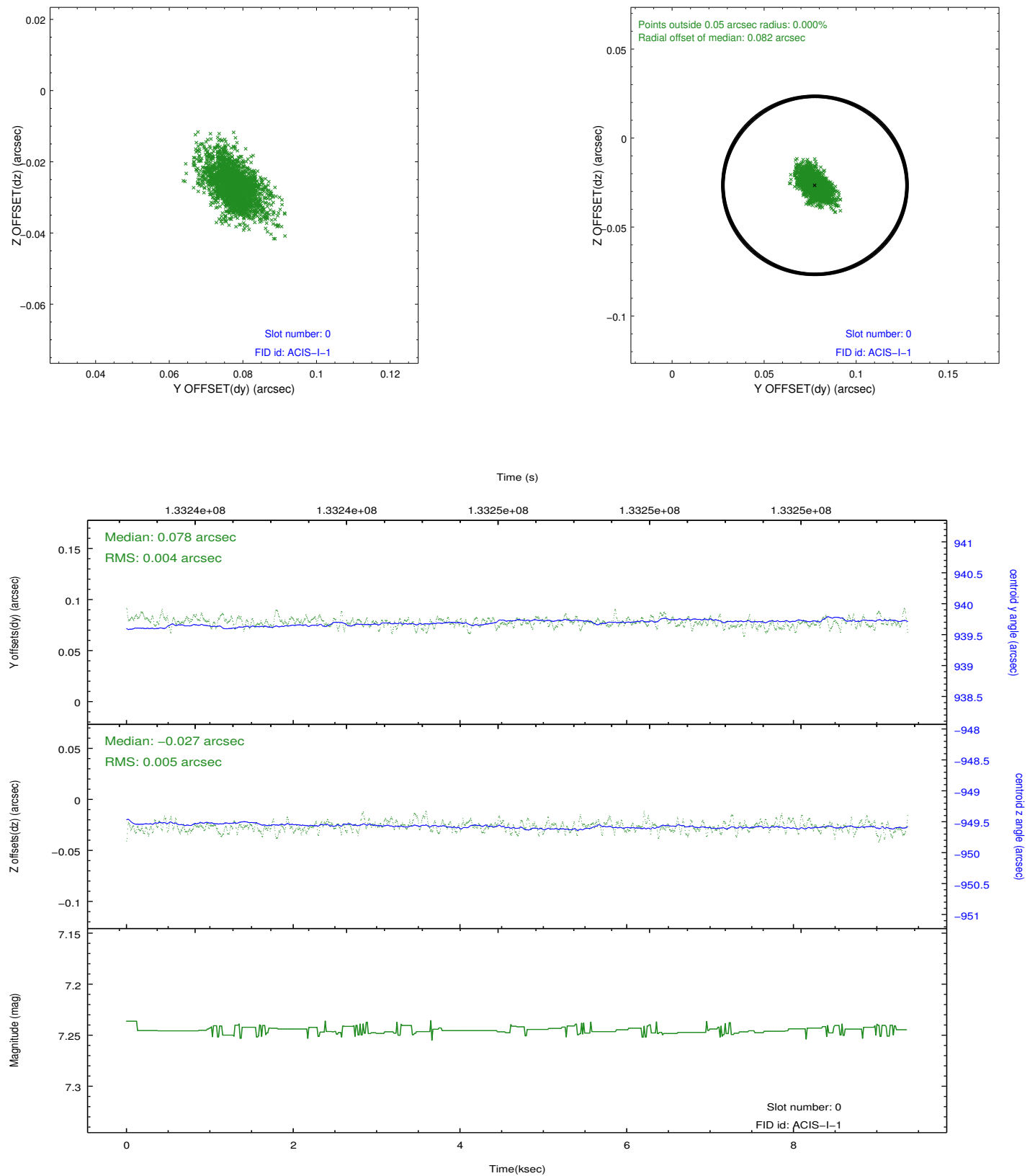


2.4.5 Slot 7

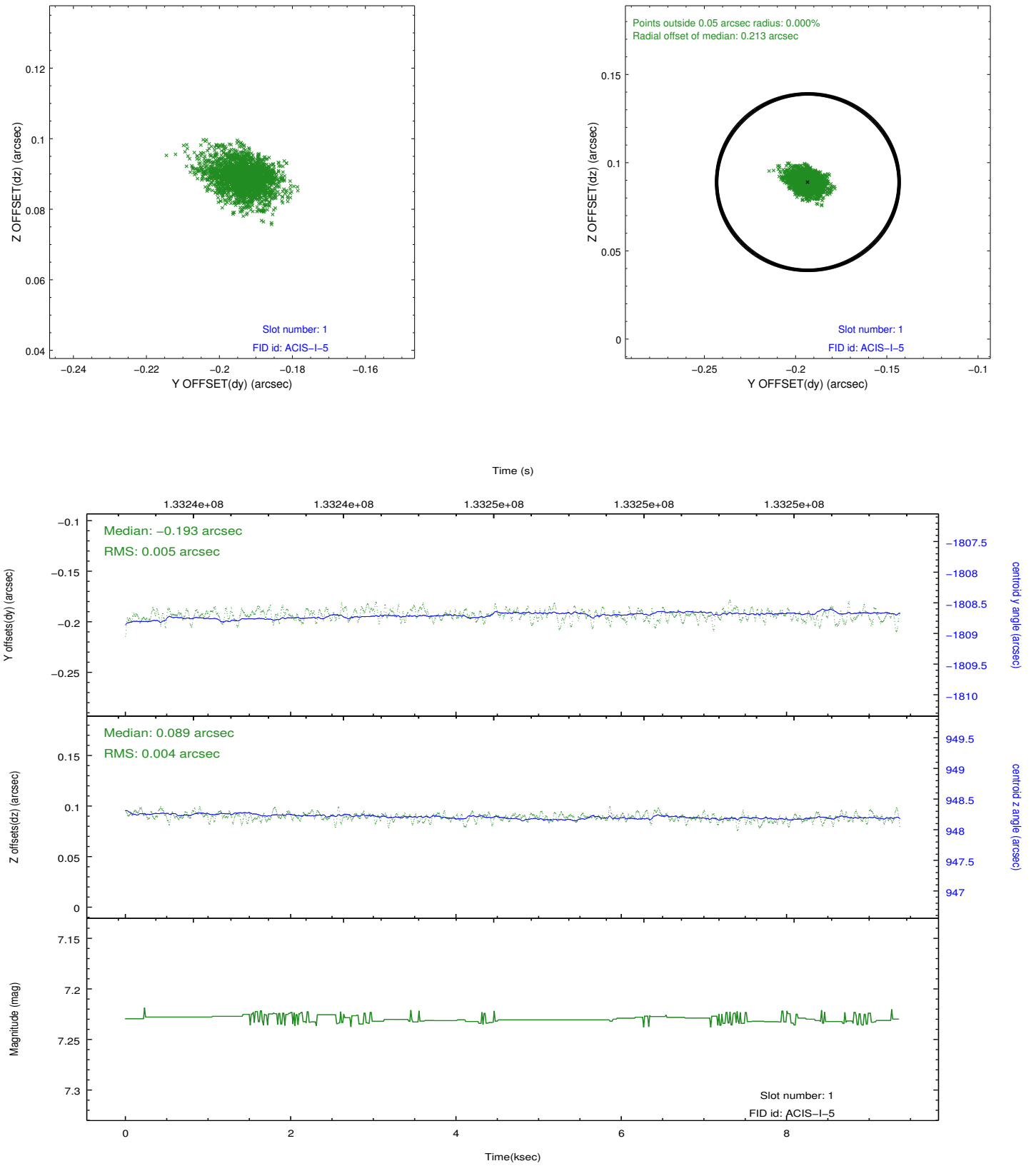


2.5 FID Slots

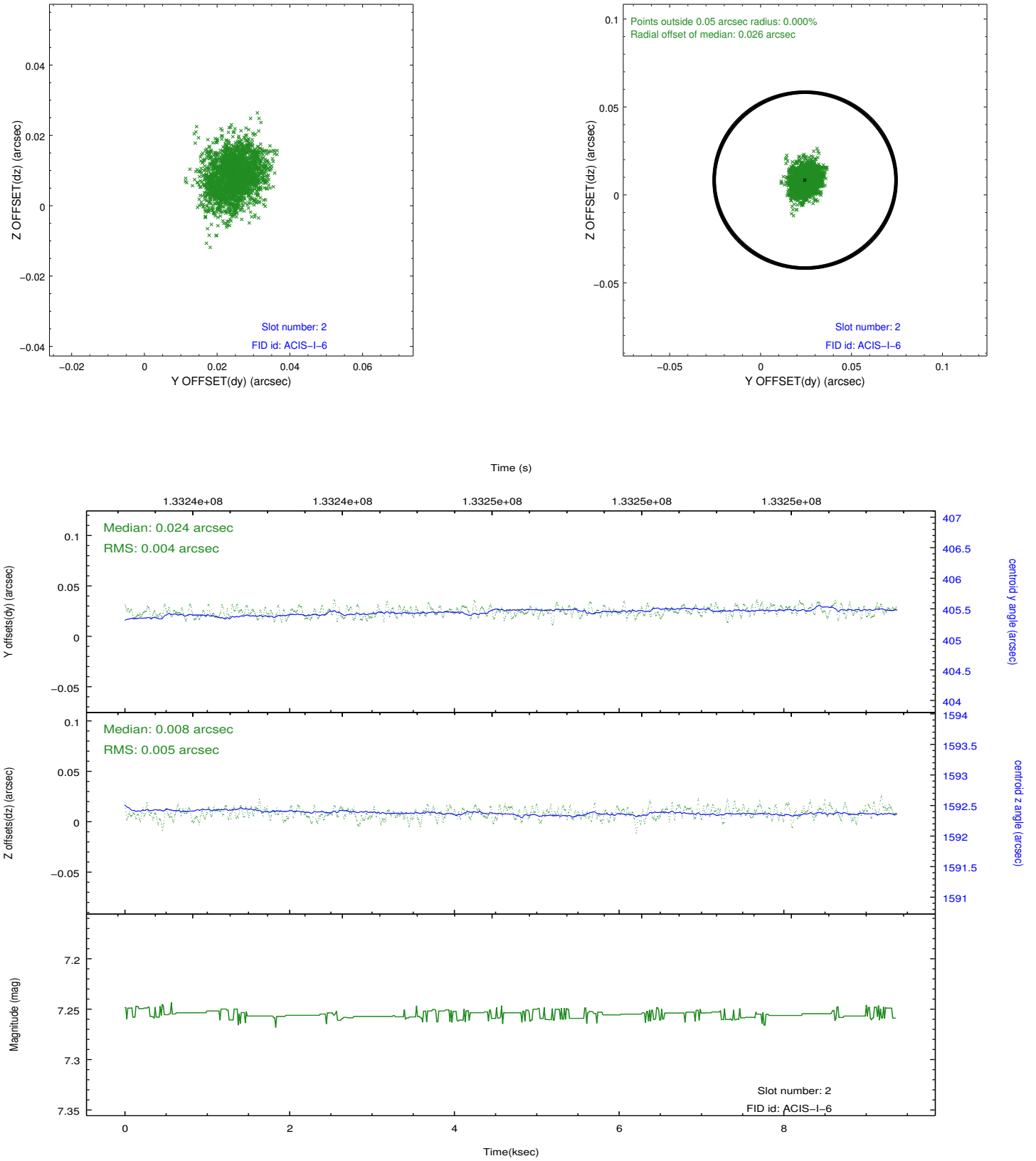
2.5.1 Slot 0



2.5.2 Slot 1



2.5.3 Slot 2



A Summary

A.1 Status

V&V Scientist	Beth Sundheim
V&V Date (YYYY-MM-DD)	2012.10.05
V&V Edition	1
V&V Disposition and Status	OK
V&V Charge Time	8.896

A.2 Comments