

V&V Reference Report

L2 ASCDS Version : 8.4.5

Observation 2953 - L2 Version 5
Chandra X-Ray Center

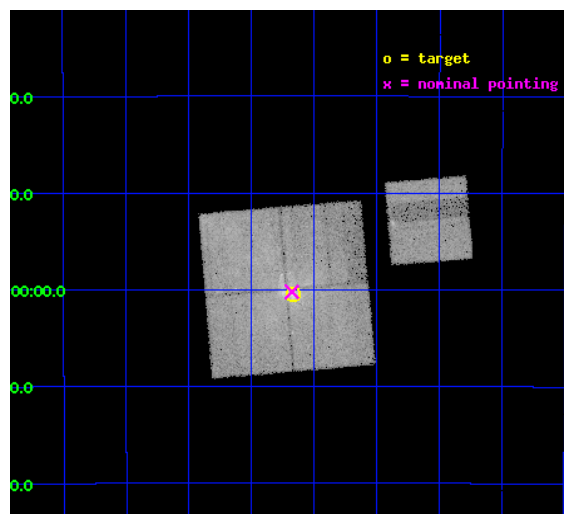
L2 Processing Date : Nov 29 2012

Contents

1	Front	2
2	OBI	3
2.1	OBI	3
2.1.1	Images	3
2.1.2	Bias	3
2.1.3	Parameters	4
2.1.4	Events	4
2.2	Compared Parameters	5
2.3	Aspect	6
2.4	Star Slots	9
2.4.1	Slot 3	9
2.4.2	Slot 4	10
2.4.3	Slot 5	11
2.4.4	Slot 6	12
2.4.5	Slot 7	13
2.5	FID Slots	14
2.5.1	Slot 0	14
2.5.2	Slot 1	15
2.5.3	Slot 2	16
A	Summary	17
A.1	Status	17
A.2	Comments	17

1 Front

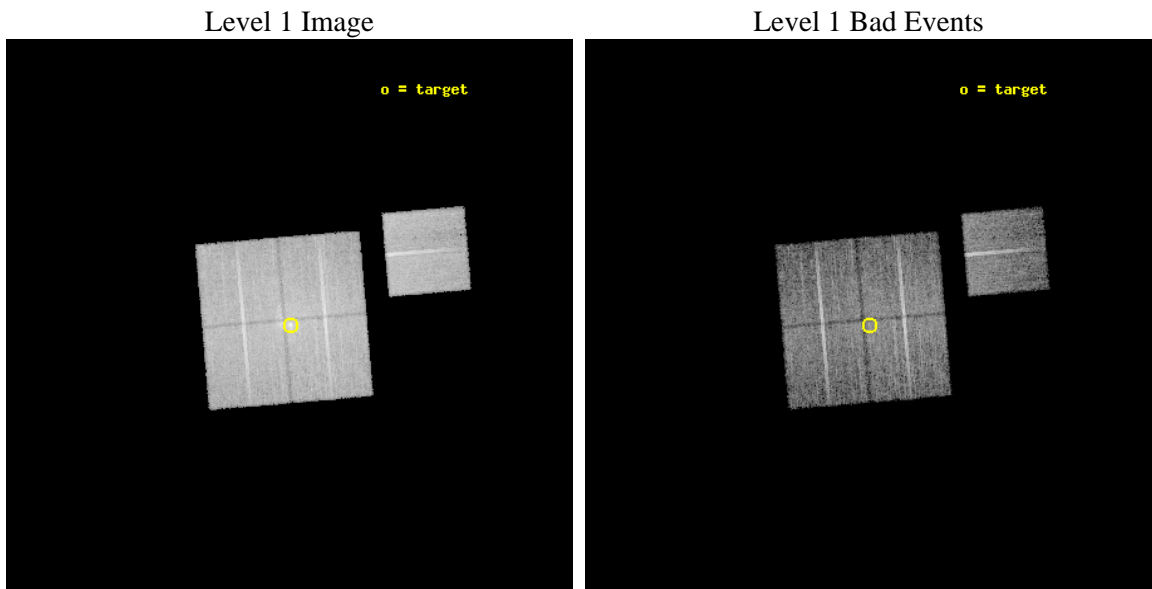
seq_num	600290	Sequence number
obs_id	2953	Observation id
title	SIMULTANEOUS X-RAY/RADIO MONITORING OF SAGITTARIUS A*	Proposal tit
observer	Professor Gordon Garmire	Principal investigator
object	SGR A*	Source name
dtcycle	0	
cycle	P	events from which exps? Prim/Second/Both
ra_targ	266.416667	Observer's specified target RA [deg]
dec_targ	-29.007778	Observer's specified target Dec [deg]
ra_nom	266.41915853323	Nominal RA [deg]
dec_nom	-29.003638606918	Nominal Dec [deg]
roll_nom	85.175300730879	Nominal Roll [deg]
revision	5	Processing version of data
ontime	11742.799977392	Sum of GTIs [s]
livetime	11589.371650764	Livetime [s]
ontime0	11742.799977392	Sum of GTIs [s]
ontime1	11742.799977392	Sum of GTIs [s]
ontime2	11742.799977392	Sum of GTIs [s]
ontime3	11742.799977392	Sum of GTIs [s]
ontime6	11742.799977392	Sum of GTIs [s]
l2events	150793	Number of level 2 events



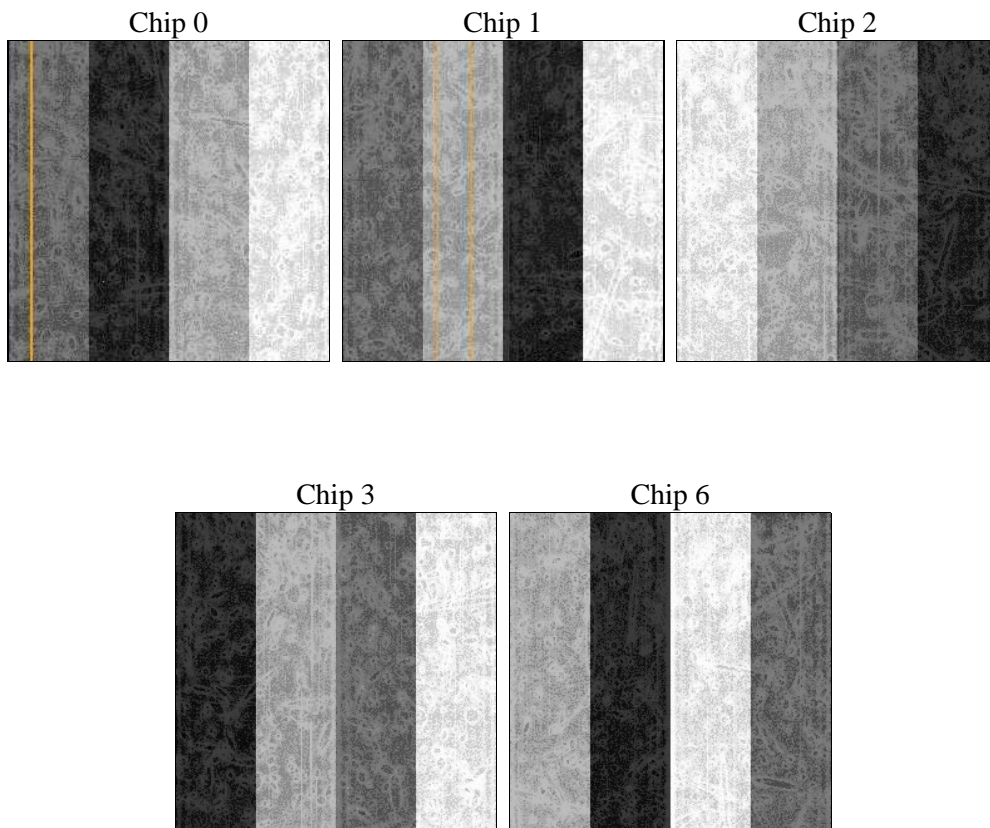
2 OBI

2.1 OBI

2.1.1 Images



2.1.2 Bias



2.1.3 Parameters

obi_num	1	Obi number	sched_exp_time	12000.000000	[s] Scheduled observation exposure time
ascdsver	8.4.5	Processing system revision	ontime	11742.799977392	Sum of GTIs [s]
caldsver	4.5.2	 	ontime0	11742.799977392	Sum of GTIs [s]
date	2012-11-29T15:14:00	Date and time of file creation	ontime1	11742.799977392	Sum of GTIs [s]
revision	5	Processing version of data	ontime2	11742.799977392	Sum of GTIs [s]
			ontime3	11742.799977392	Sum of GTIs [s]
			ontime6	11742.799977392	Sum of GTIs [s]
			l1events	512566	Number of level 1 events

2.1.4 Events

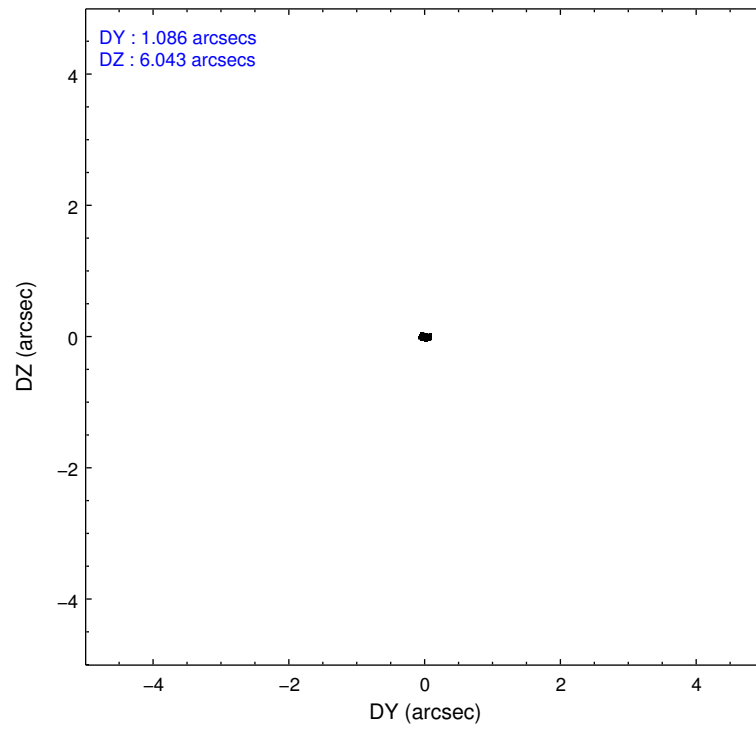
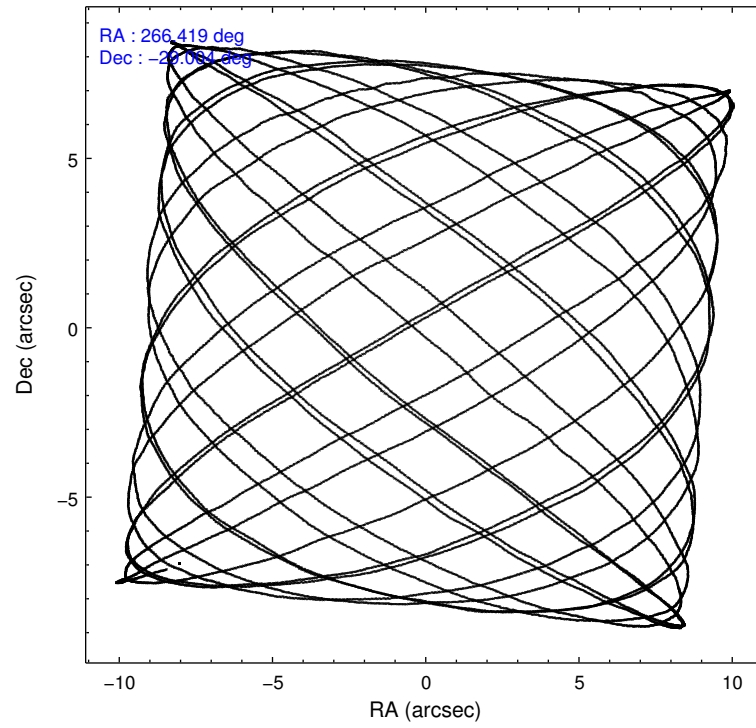
	ccd 0	ccd 1	ccd 2	ccd 3	ccd 6
level 1 events	104167	99882	103371	109453	95693
rejected events	63438	65061	72234	74047	69698
rejected %	60%	65%	69%	67%	72%

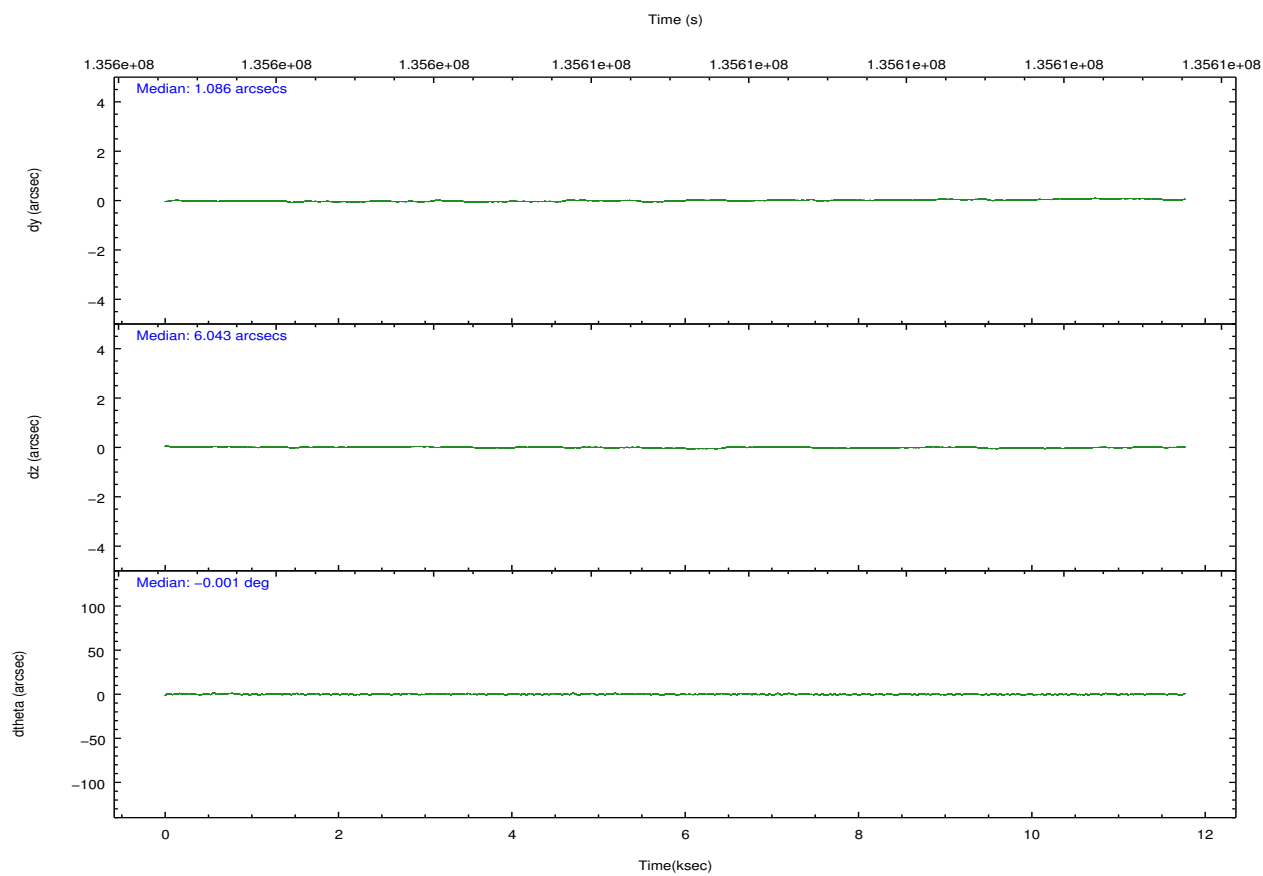
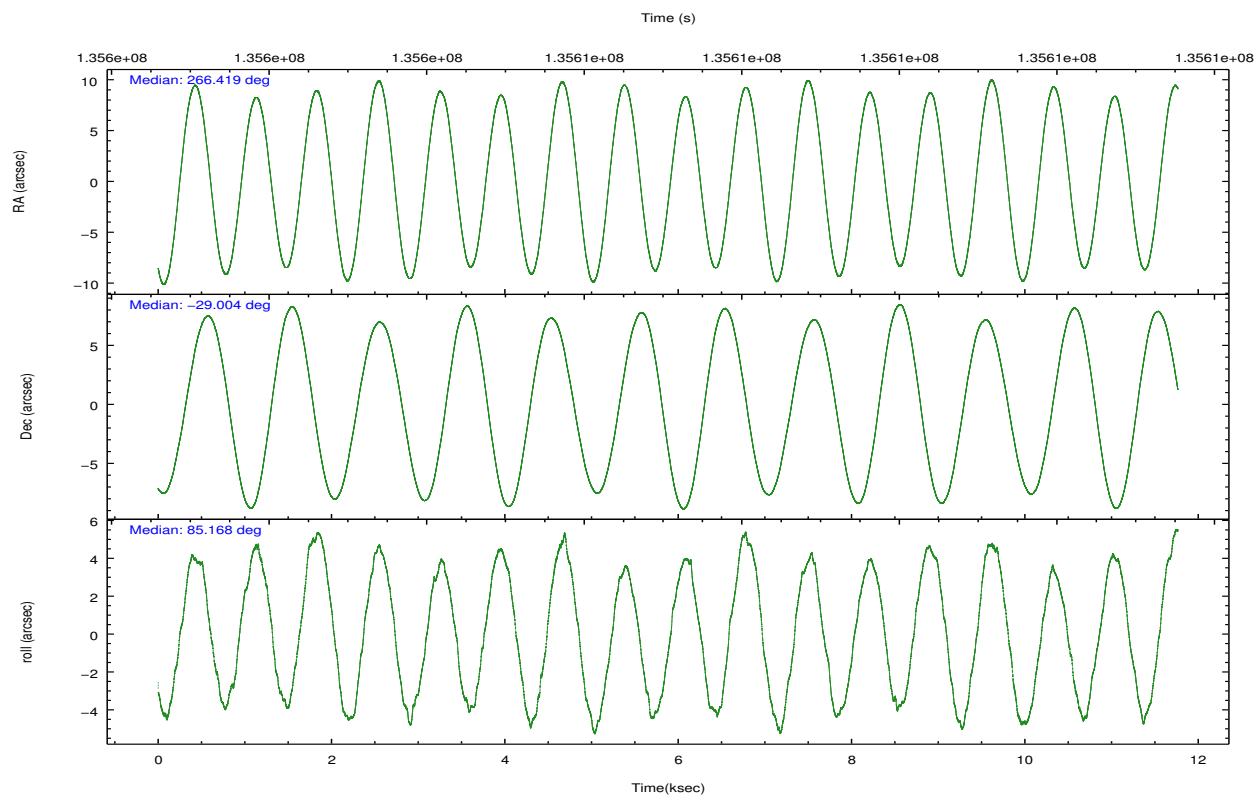
	ccd 0	ccd 1	ccd 2	ccd 3	ccd 6
grade 0 events	21870	16588	16118	17680	12040
	20%	16%	15%	16%	12%
grade 1 events	107	76	99	85	61
	0%	0%	0%	0%	0%
grade 2 events	9394	9671	7179	9104	7586
	9%	9%	6%	8%	7%
grade 3 events	1834	1646	1236	1579	1091
	1%	1%	1%	1%	1%
grade 4 events	1867	1559	1718	1670	1168
	1%	1%	1%	1%	1%
grade 5 events	2691	2945	2533	2883	3148
	2%	2%	2%	2%	3%
grade 6 events	5857	5428	4954	5465	4168
	5%	5%	4%	4%	4%
grade 7 events	60547	61969	69534	70987	66431
	58%	62%	67%	64%	69%

2.2 Compared Parameters

Parameter	Planned	Actual	Parameter	Planned	Actual
Instrument	ACIS	ACIS	Obspar format version number	7	7
Detector	ACIS-01236	ACIS-01236	Obspar file type	PREDICTED	ACTUAL
Grating	NONE	NONE	Obspar update status	OVERRIDE	OVERRIDE
Data mode	FAINT	FAINT	Number of optional ACIS chips dropped	0	0
Observation mode	POINTING	POINTING	On-chip summing requested	N	N
[deg] Pointing RA	266.432575	266.4191585332285	Subarray requested	NONE	NONE
[deg] Pointing Dec	-29.028409	-29.00363860691821	Alternating exposures requested	N	N
[deg] Pointing Roll	84.973119	85.17530073087929	[s] Primary exposure time	3.1	3.1
[s] Window start time (MET)	135600664.184000	135600664.184000			
[s] Window stop time (MET)	135613264.184000	135613264.184000			
[mm] SIM focus pos	-0.7809083437167272	-0.7809083437167272			
[mm] SIM defocus	0.001439854621705816	0.001439854621705816			
[mm] SIM translation stage pos	-233.5899487761303	-233.5899487761303			
[mm] SIM translation stage offset	-0.002514315301482384	-0.002514315301482384			
[s] Observation start time (MET)	135601183.184000	135601183.184			
Observation start date	2002-04-19T10:58:39	2002-04-19T10:59:43			
[s] Observation end time (MET)	135612950.810000	135612950.81			
Observation end date	2002-04-19T14:15:51	2002-04-19T14:15:50			
Read mode	TIMED	TIMED			

2.3 Aspect



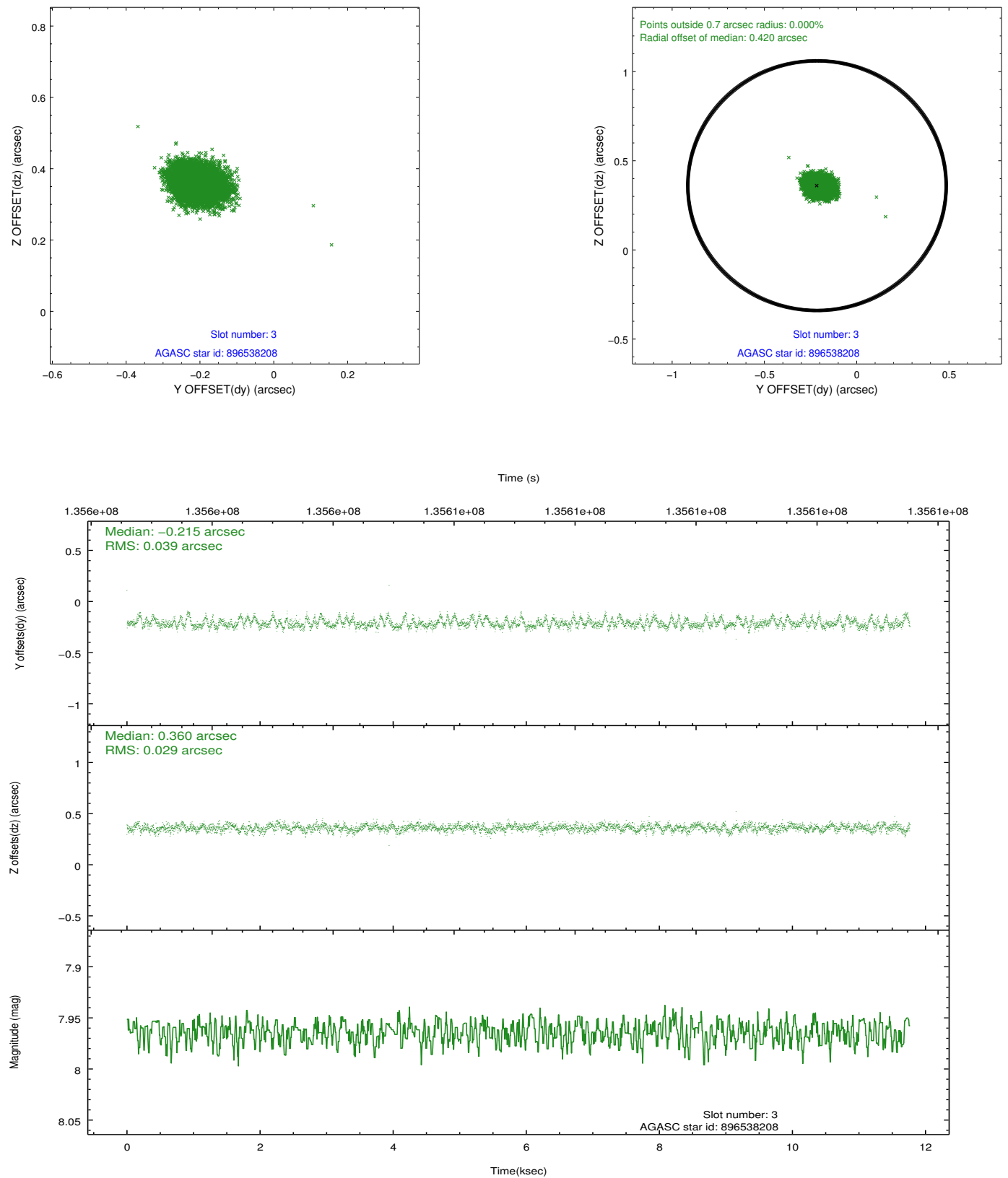


Slot Statistics

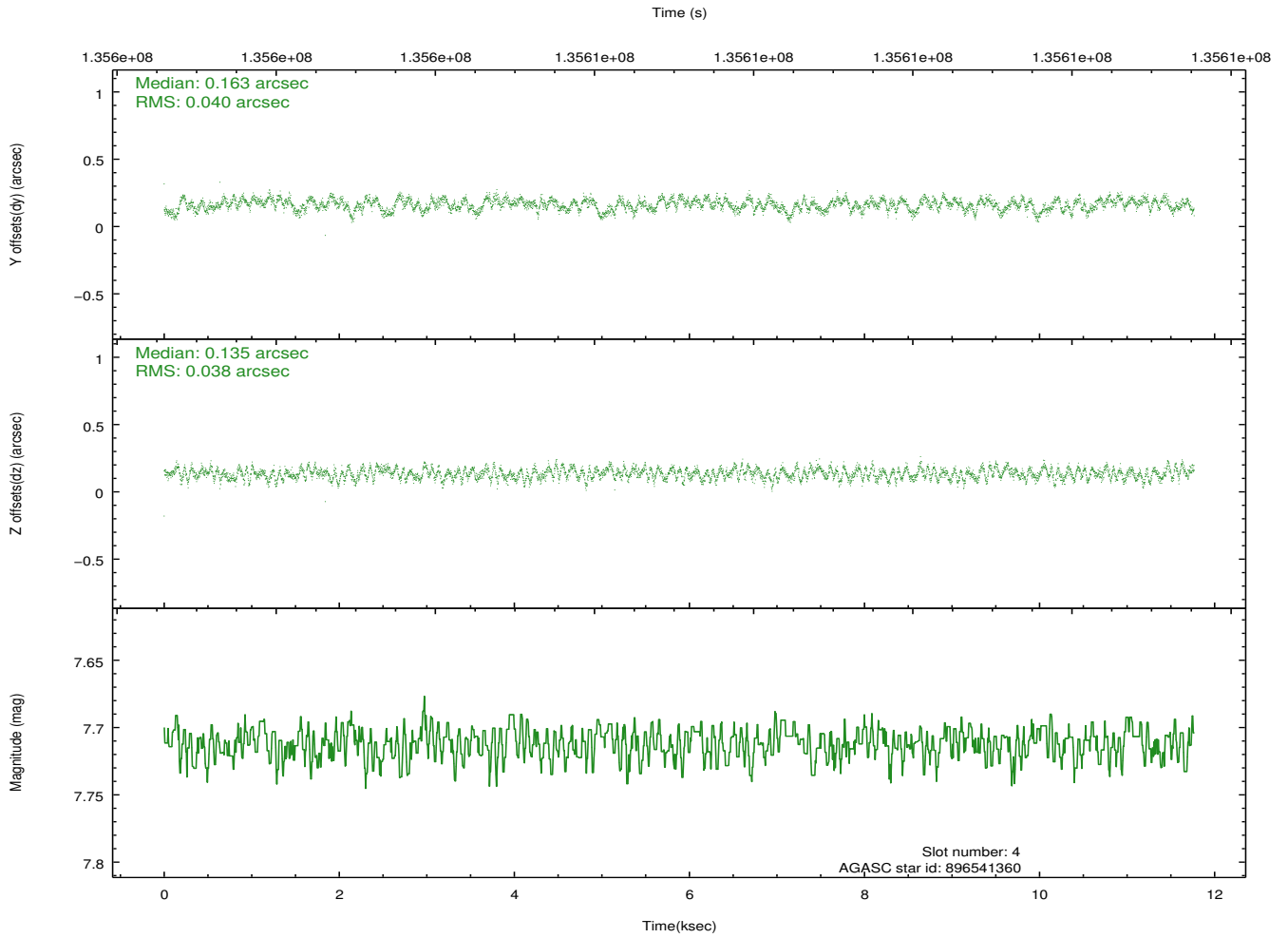
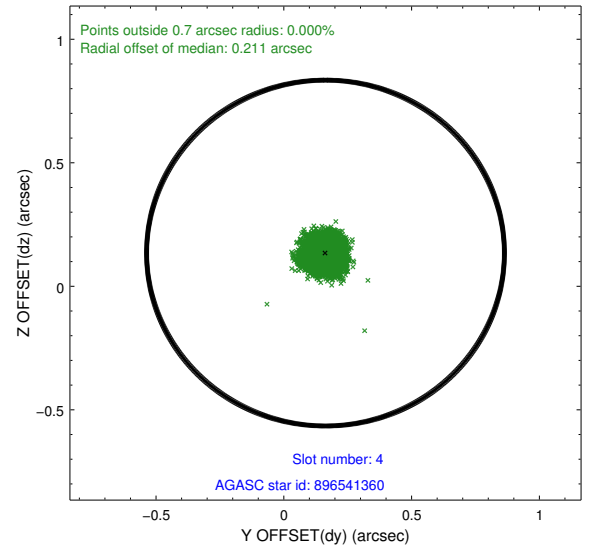
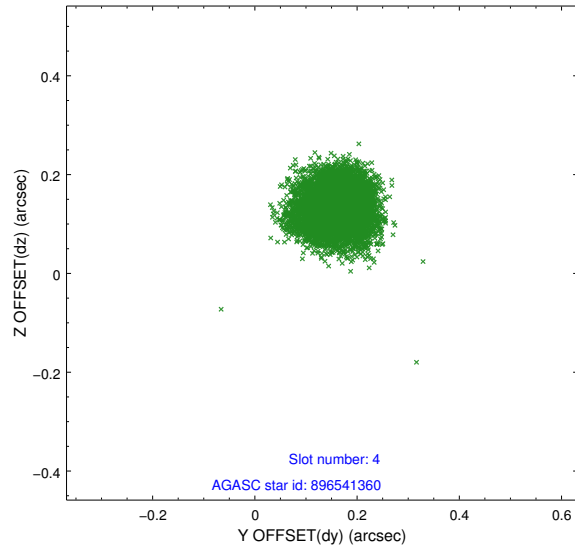
slot	status	id	mag	n_pts	med_dy	med_dz	dr1	dr2	ra	dec	mean_y	mean_z
0	FID	ACIS-I-1	7.25	2870	-0.011	0.013	0.006	0.011	0.000000	0.000000	938.73	-829.36
1	FID	ACIS-I-5	7.24	2870	-0.065	0.033	0.006	0.010	0.000000	0.000000	-1809.16	1067.98
2	FID	ACIS-I-6	7.26	2870	-0.015	0.024	0.007	0.011	0.000000	0.000000	403.85	1712.93
3	GUIDE	896538208	7.96	5741	-0.215	0.360	0.051	0.085	267.176969	-28.671626	1478.33	-2230.23
4	GUIDE	896541360	7.71	5740	0.163	0.135	0.060	0.092	266.684478	-29.453744	-1456.39	-921.78
5	GUIDE	896540808	7.48	5741	0.097	-0.135	0.039	0.065	265.985401	-29.308604	-1130.78	1308.86
6	GUIDE	896403224	8.29	5741	0.241	-0.320	0.089	0.138	265.612825	-29.438915	-1706.63	2429.15
7	GUIDE	896534664	8.21	5739	-0.285	-0.041	0.054	0.086	266.405570	-28.407461	2218.74	281.29

2.4 Star Slots

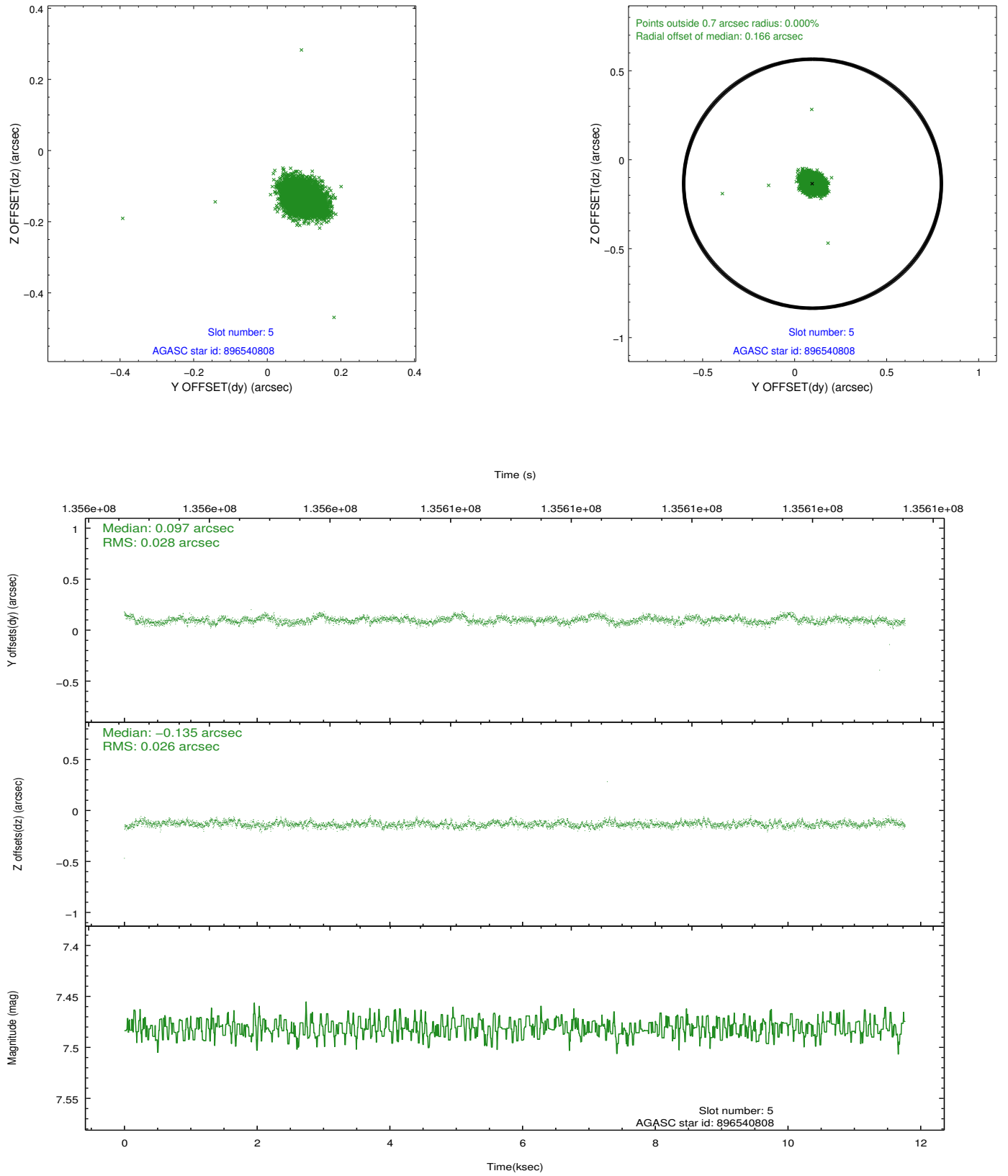
2.4.1 Slot 3



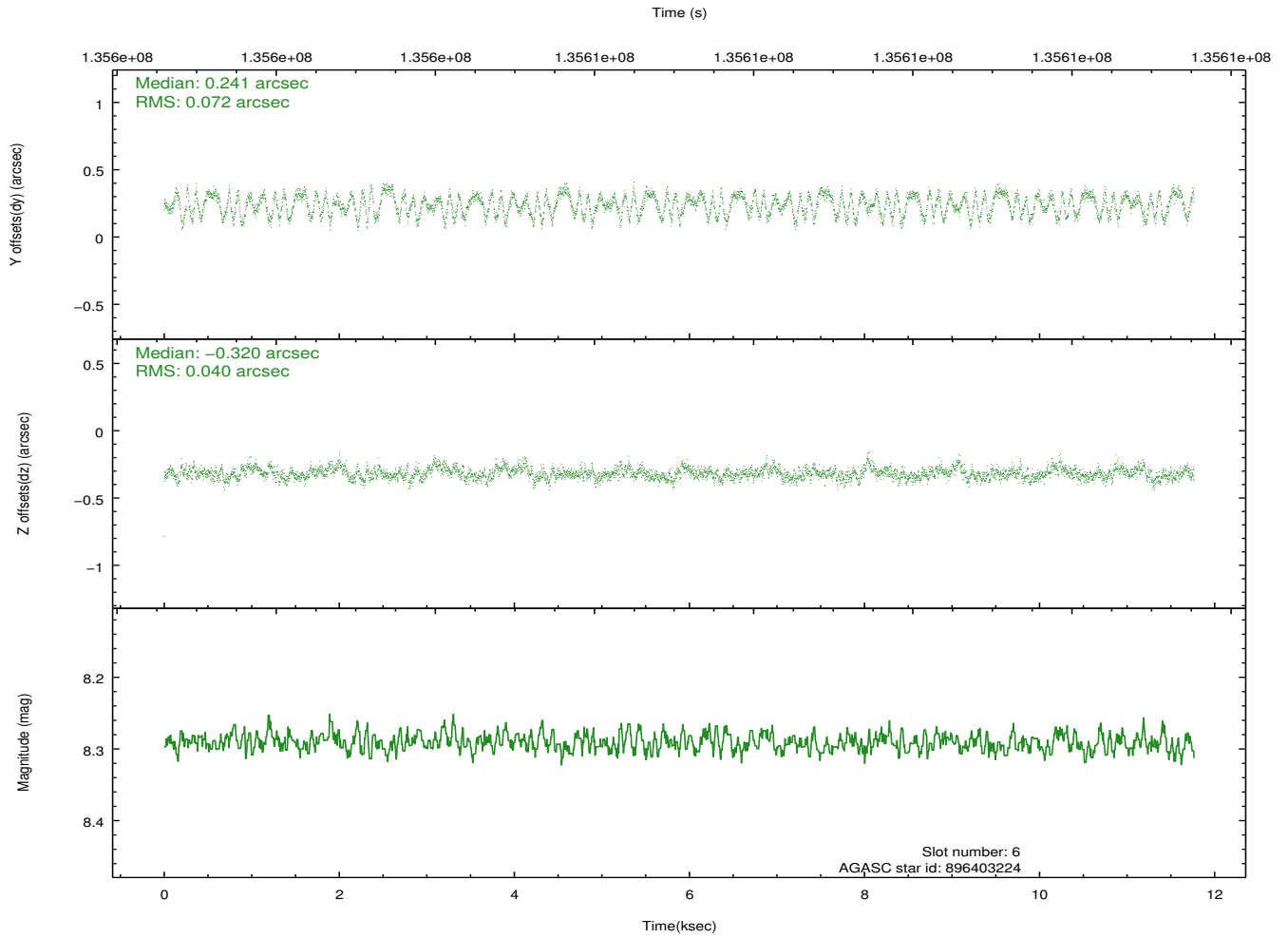
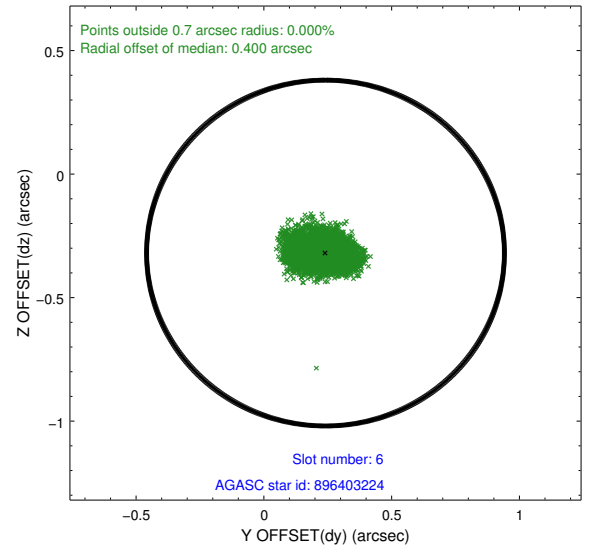
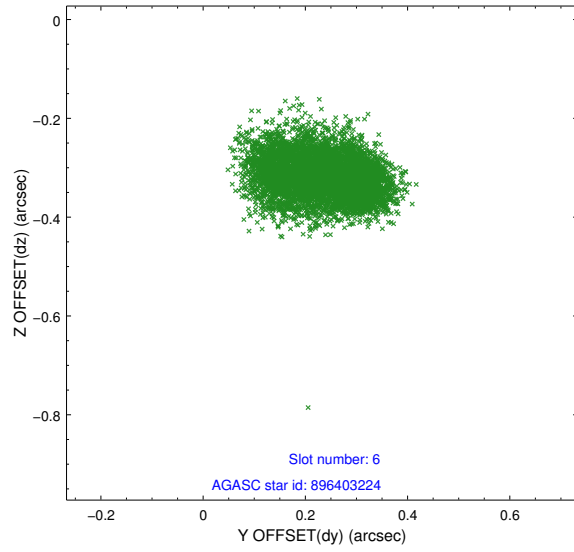
2.4.2 Slot 4



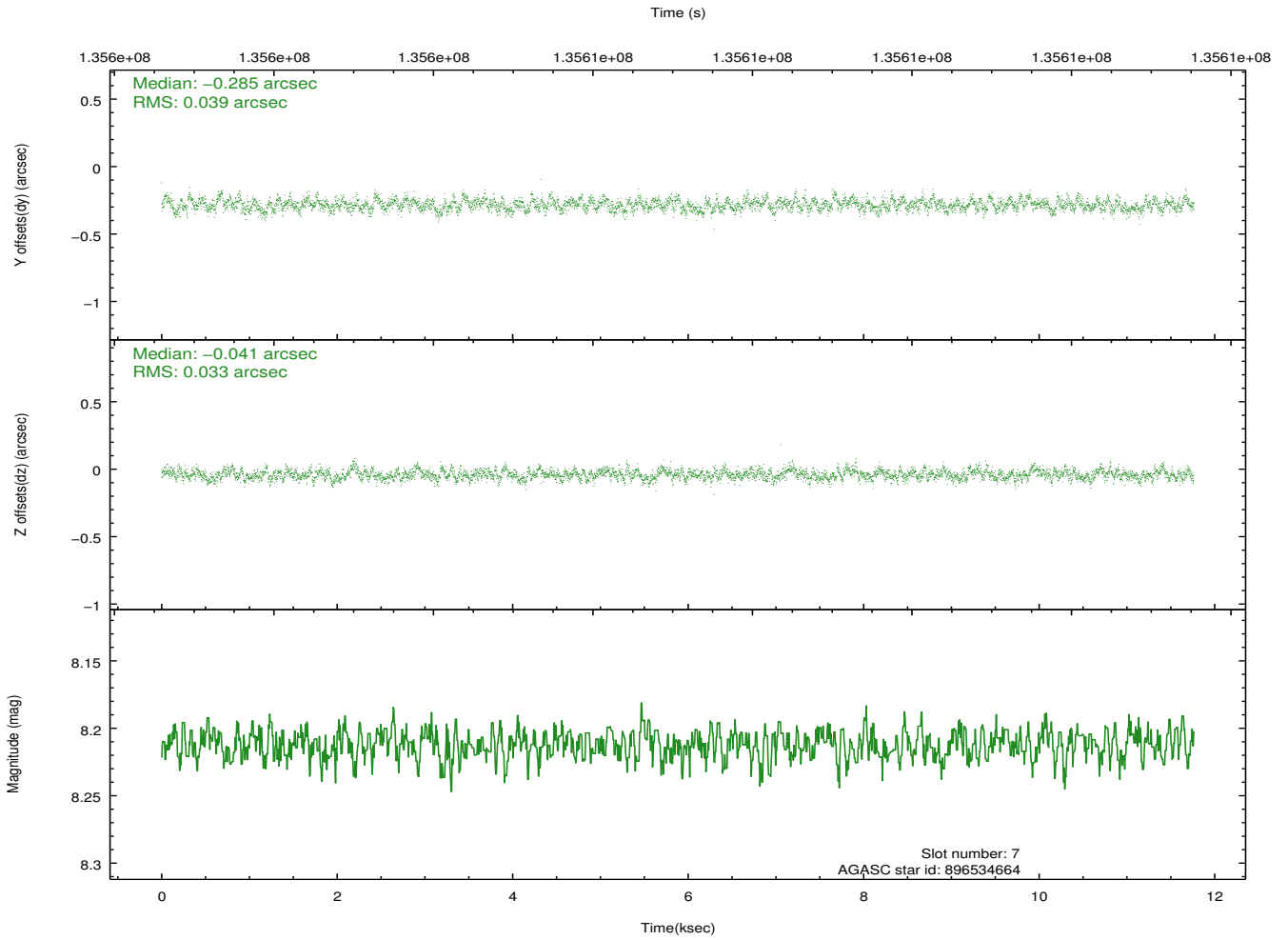
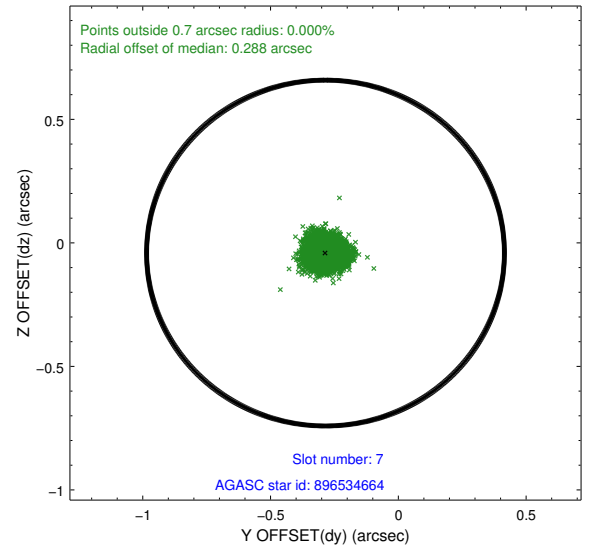
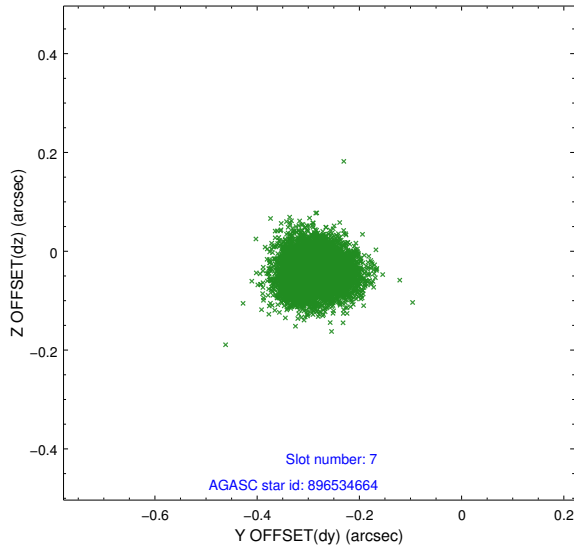
2.4.3 Slot 5



2.4.4 Slot 6

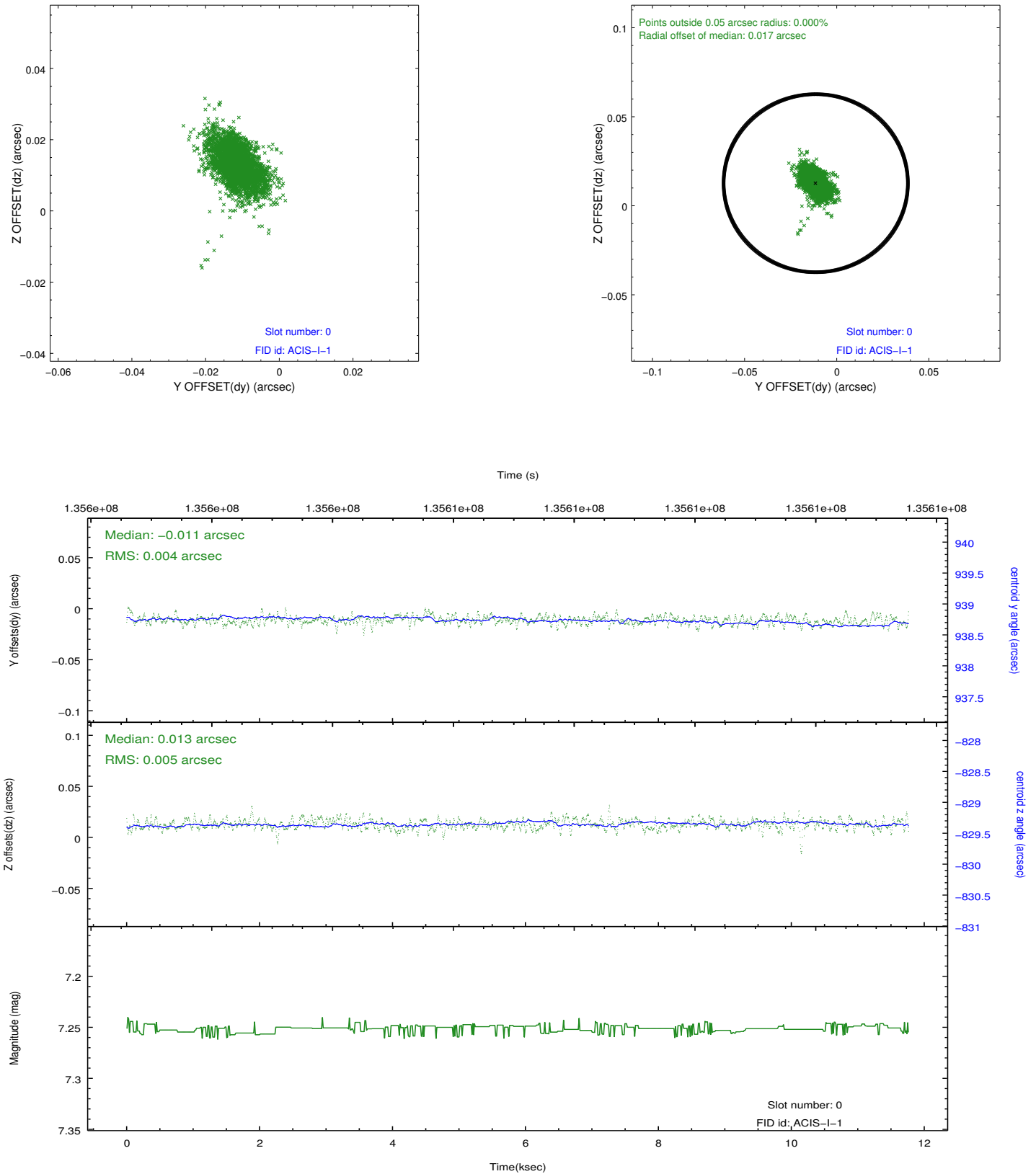


2.4.5 Slot 7

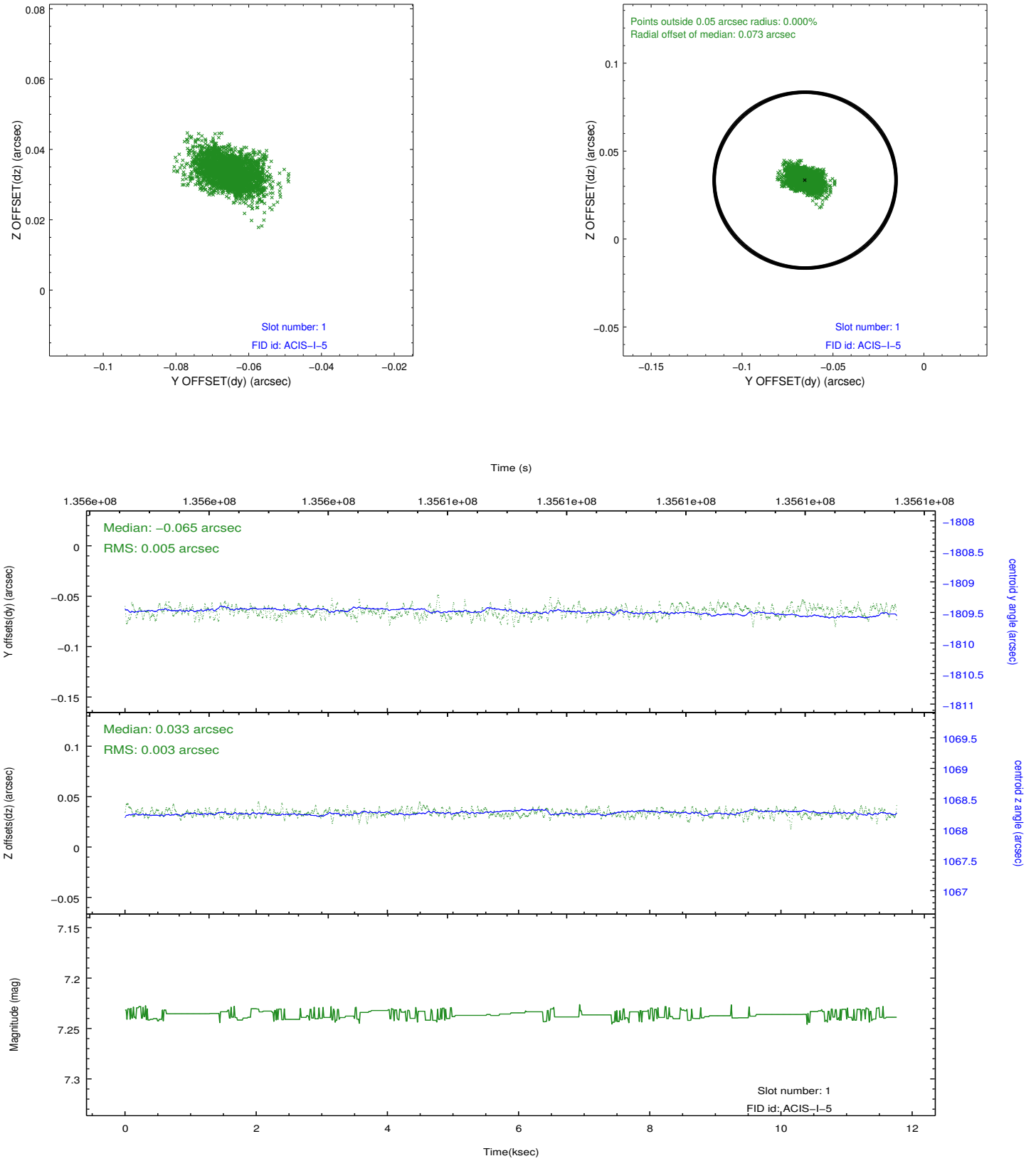


2.5 FID Slots

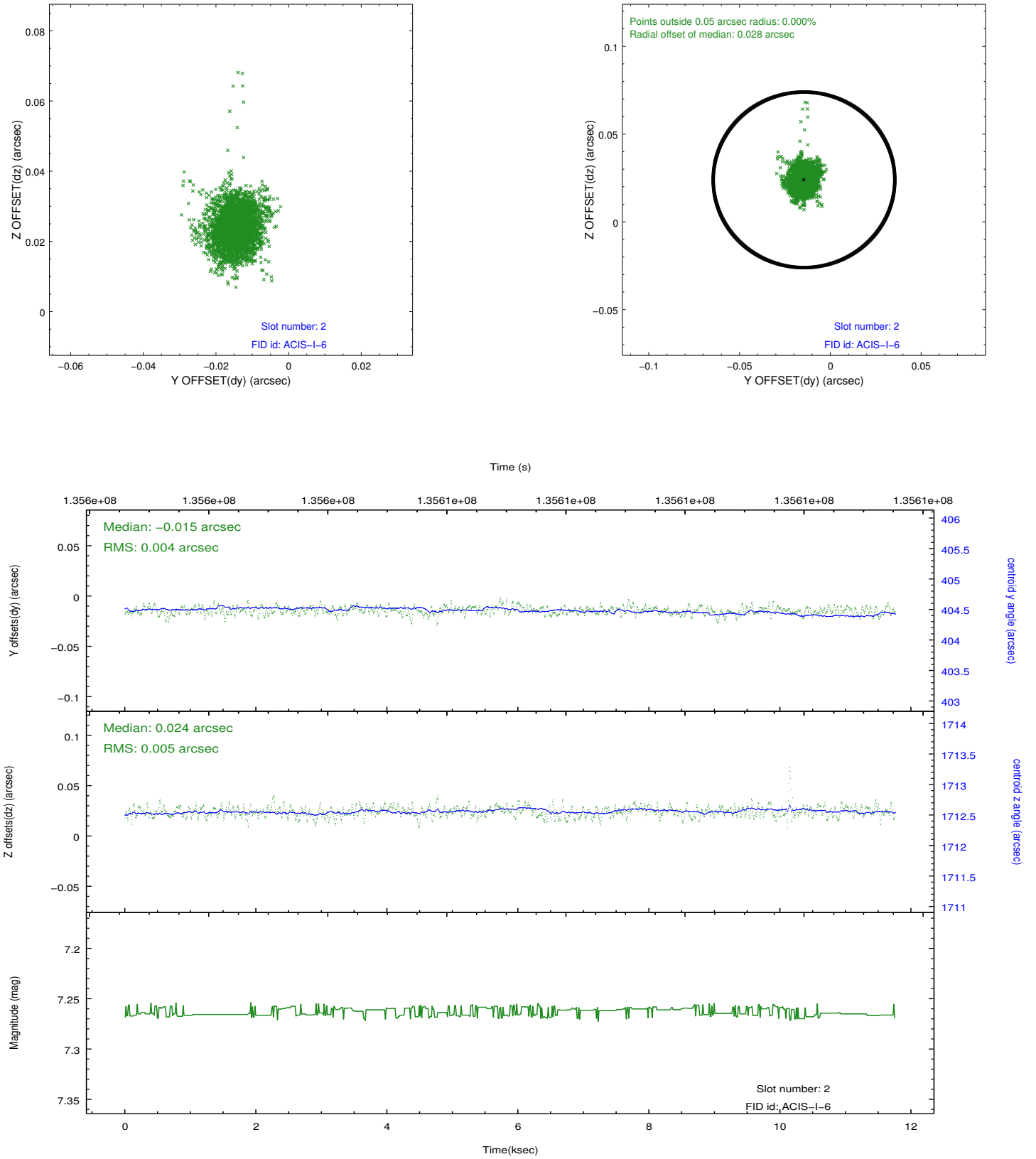
2.5.1 Slot 0



2.5.2 Slot 1



2.5.3 Slot 2



A Summary

A.1 Status

V&V Scientist	Jen Lauer
V&V Date (YYYY-MM-DD)	2012.12.11
V&V Edition	1
V&V Disposition and Status	OK
V&V Charge Time	11.941

A.2 Comments

Charge time for this ObsId remains at previous value of 11.941 ks although with the current processing the charge time would have been 11.74 ksec.

=====

Window constraint met.

=====

This observation was interrupted by safing of the science instruments onboard Chandra due to high solar radiation environment. The observation was interrupted at ~2002:109:14:15:00 UT. Due to a high radiation environment, the instruments were safed and the observation terminated early. This observation has been reprocessed so that the aspect solution correctly handles the instrument safing and maneuver activities at the end of the observation.