

# V&V Reference Report

## L2 ASCDS Version : 7.6.8.1

Observation 2883 - L2 Version 001  
Chandra X-Ray Center

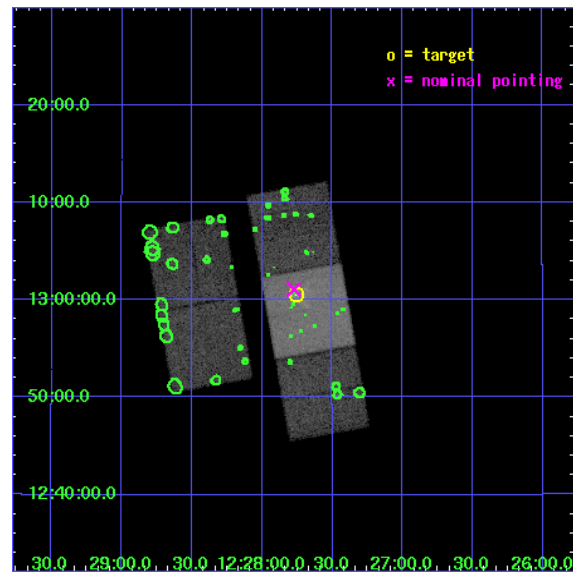
L2 Processing Date : Aug 29 2006

## Contents

<b>1</b>	<b>Front</b>	<b>2</b>
<b>2</b>	<b>OBI</b>	<b>3</b>
2.1	OBI . . . . .	3
2.1.1	Images . . . . .	3
2.1.2	Bias . . . . .	3
2.1.3	Parameters . . . . .	4
2.1.4	Events . . . . .	4
2.2	Compared Parameters . . . . .	5
2.3	Aspect . . . . .	6
2.4	Star Slots . . . . .	9
2.4.1	Slot 3 . . . . .	9
2.4.2	Slot 4 . . . . .	10
2.4.3	Slot 5 . . . . .	11
2.4.4	Slot 6 . . . . .	12
2.4.5	Slot 7 . . . . .	13
2.5	FID Slots . . . . .	14
2.5.1	Slot 0 . . . . .	14
2.5.2	Slot 1 . . . . .	15
2.5.3	Slot 2 . . . . .	16
<b>3</b>	<b>Point Sources</b>	<b>17</b>
<b>A</b>	<b>Summary</b>	<b>18</b>
A.1	Status . . . . .	18
A.2	Comments . . . . .	18

# 1 Front

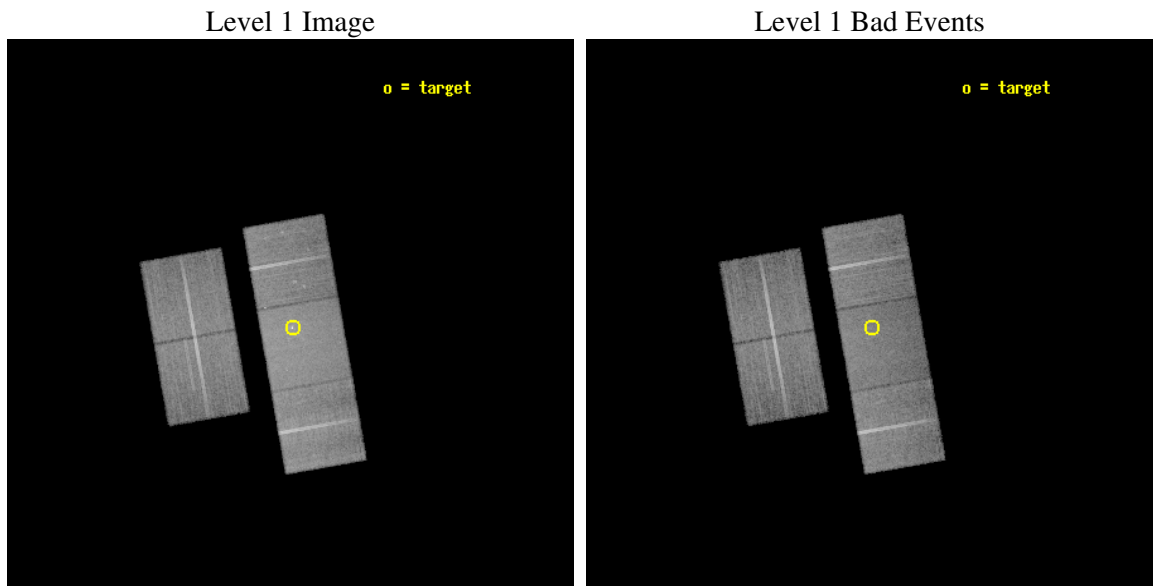
seq_num	600220
obs_id	2883
title	THE TRANSFORMATION OF GALAXIES IN CLUSTERS
observer	Dr. Christine Jones
object	NGC 4438
dtcycle	0
cycle	P
ra_targ	186.94
dec_targ	13.008889
ra_nom	186.94346520134
dec_nom	13.017996281
roll_nom	79.935759455547
revision	2
ontime	25404.499951154
livetime	25072.571456771
ontime2	25401.358950987
ontime3	25401.358970895
ontime6	25404.499951154
ontime7	25404.499951154
ontime8	25404.499951154
l2events	181490



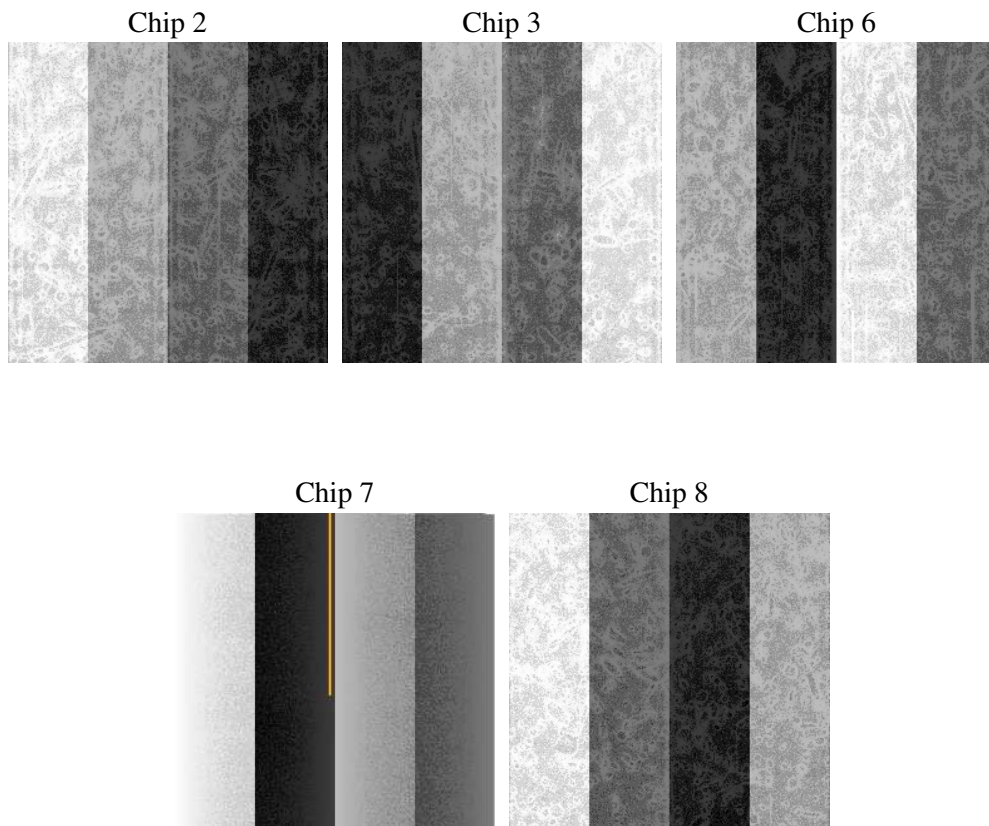
## 2 OBI

### 2.1 OBI

#### 2.1.1 Images



#### 2.1.2 Bias



### 2.1.3 Parameters

obi_num	0
ascdsver	7.6.8.1
caldsver	3.2.3
date	2006-08-29T19:42:02
revision	2

sched_exp_time	25300.000000
ontime	25407.607073843
ontime2	25407.607063845
ontime3	25407.607083753
ontime6	25410.748064011
ontime7	25407.607073843
ontime8	25410.748064011
l1events	929960

### 2.1.4 Events

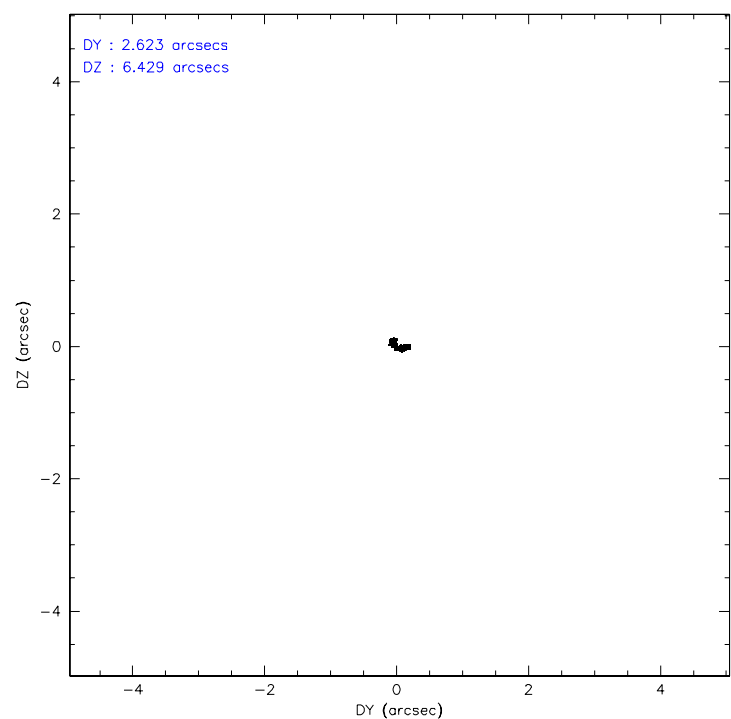
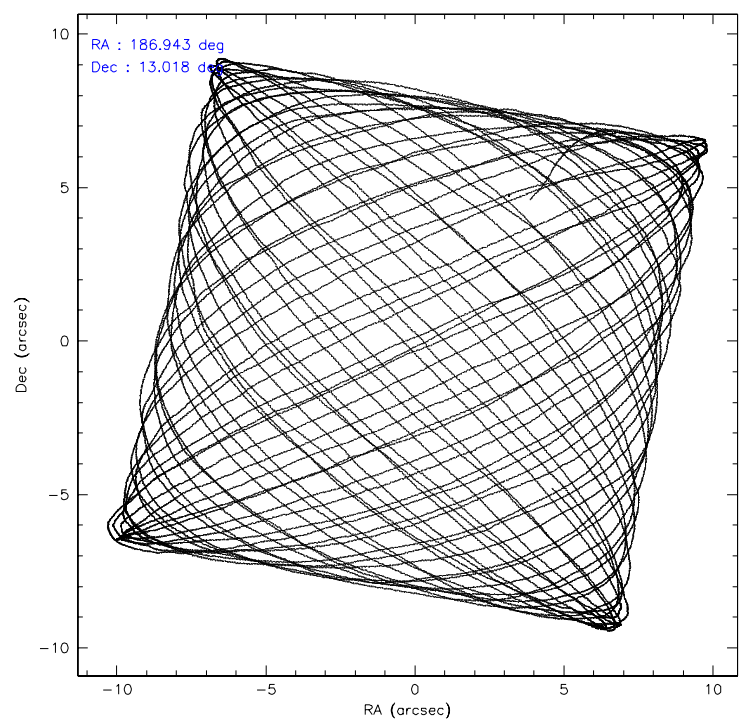
	ccd 2	ccd 3	ccd 6	ccd 7	ccd 8
level 1 events	164013	162175	173167	222248	208357
rejected events	140304	137900	146474	128447	160763
rejected %	85%	85%	84%	57%	77%

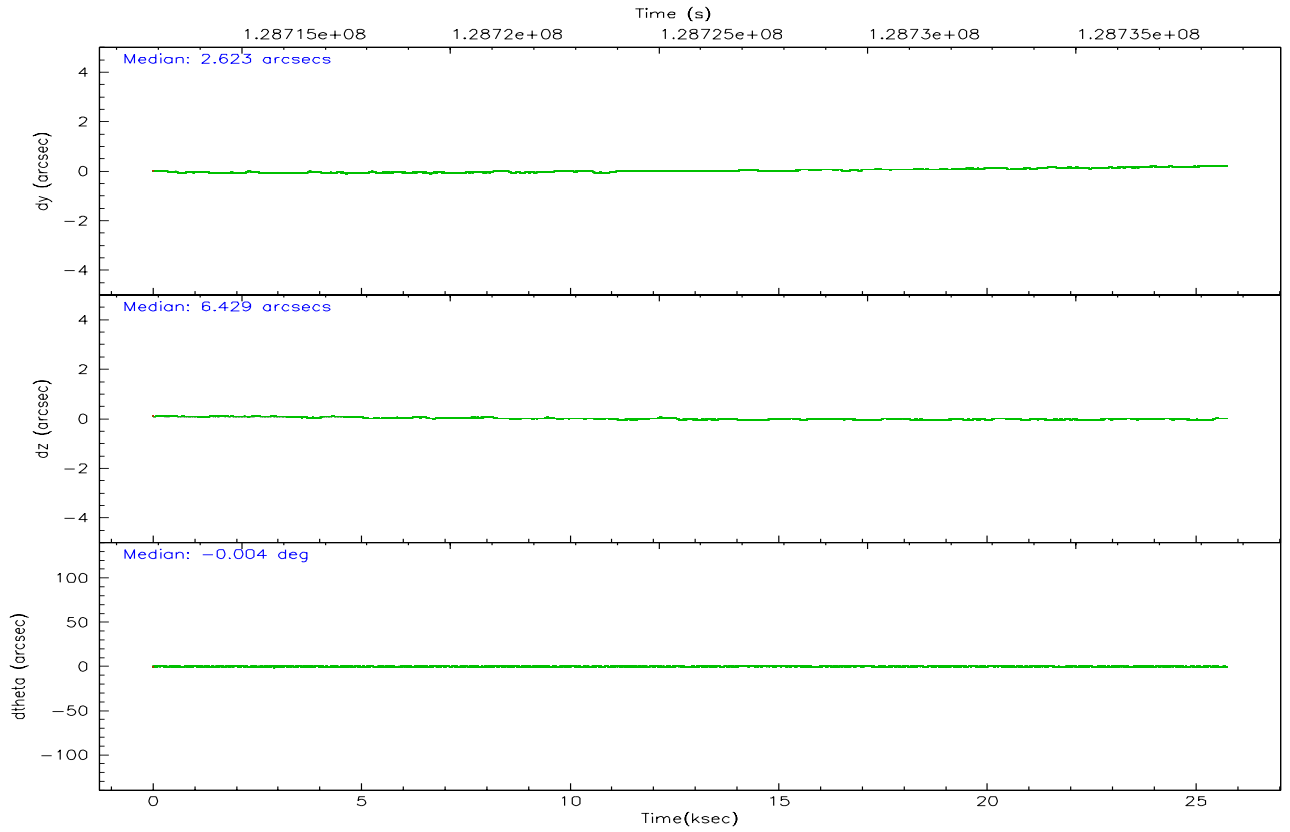
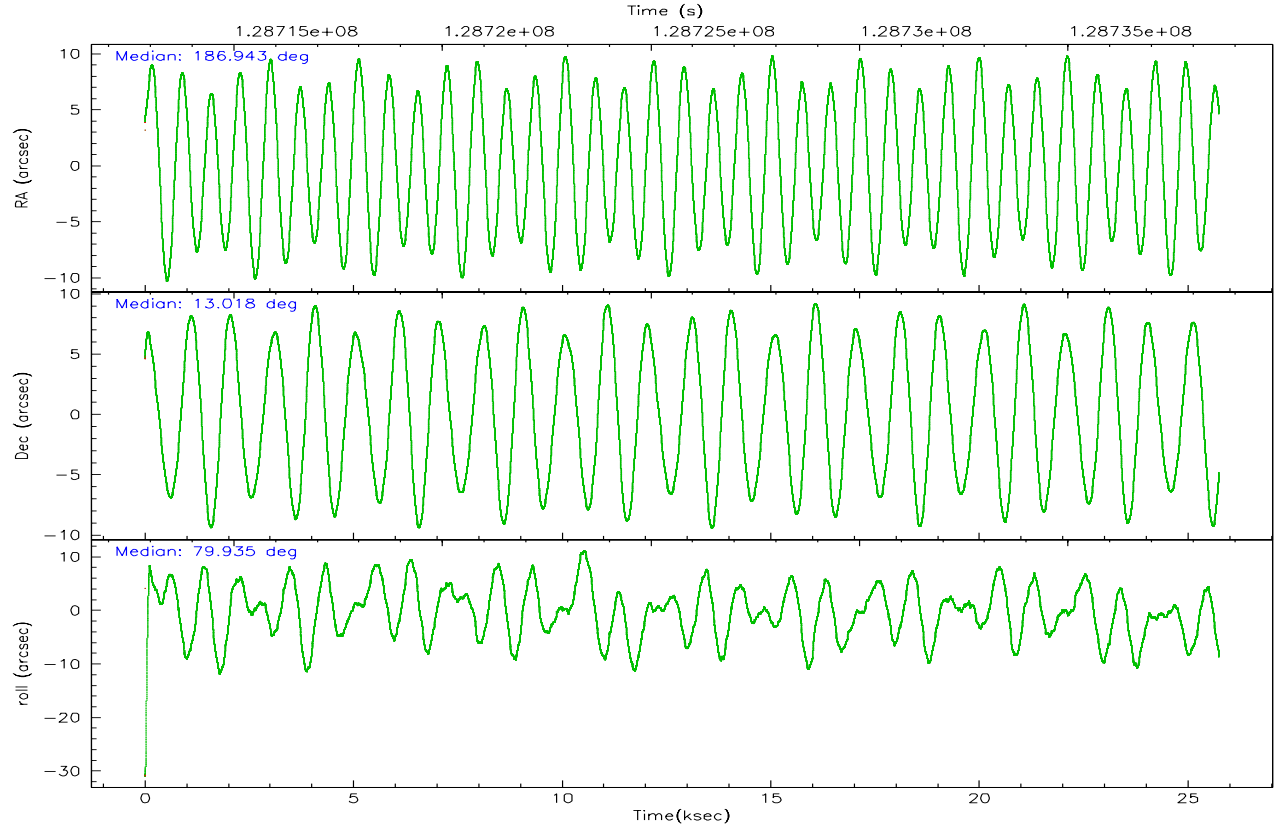
	ccd 2	ccd 3	ccd 6	ccd 7	ccd 8
grade 0 events	12274	12688	14176	9946	18043
	7%	7%	8%	4%	8%
grade 1 events	69	77	80	143	150
	0%	0%	0%	0%	0%
grade 2 events	4445	4365	4611	23540	9626
	2%	2%	2%	10%	4%
grade 3 events	1792	1929	1996	5894	4741
	1%	1%	1%	2%	2%
grade 4 events	1908	1863	2020	5606	4459
	1%	1%	1%	2%	2%
grade 5 events	5562	6283	6895	13821	8762
	3%	3%	3%	6%	4%
grade 6 events	3293	3437	3905	48829	10734
	2%	2%	2%	21%	5%
grade 7 events	134670	131533	139484	114469	151842
	82%	81%	80%	51%	72%

## 2.2 Compared Parameters

Parameter	Planned	Actual	Parameter	Planned	Actual
Instrument	ACIS	ACIS	Obspar format version number	6	6
Detector	ACIS-23678	ACIS-23678	Obspar file type	PREDICTED	ACTUAL
Grating	NONE	NONE	Obspar update status	NONE	UPDATED
Data mode	VFAINT	VFAINT	On-chip summing requested	N	N
Observation mode	POINTING	POINTING	Subarray requested	NONE	NONE
Pointing RA	186.953306	186.9434652013434	Alternating exposures requested	N	N
Pointing Dec	12.992500	13.01799628099997	Primary exposure time	0.000000	3.1
Pointing Roll	79.776938	79.93575945554664			
SIM focus pos (mm)	-0.684267	-0.6828225247311905			
SIM defocus (mm)	0	0.001444936568705701			
SIM translation stage pos (mm)	-193.132523	-193.1371298893314			
SIM translation stage offset (mm)	3	3.004607306323607			
Observation start time	128713321.184000	128712229.16169			
Observation start date	2002-01-29T17:40:57	2002-01-29T17:23:49			
Observation end time	128738621.184000	128739388.58779			
Observation end date	2002-01-30T00:42:37	2002-01-30T00:56:28			
Read mode	TIMED	TIMED			

### 2.3 Aspect





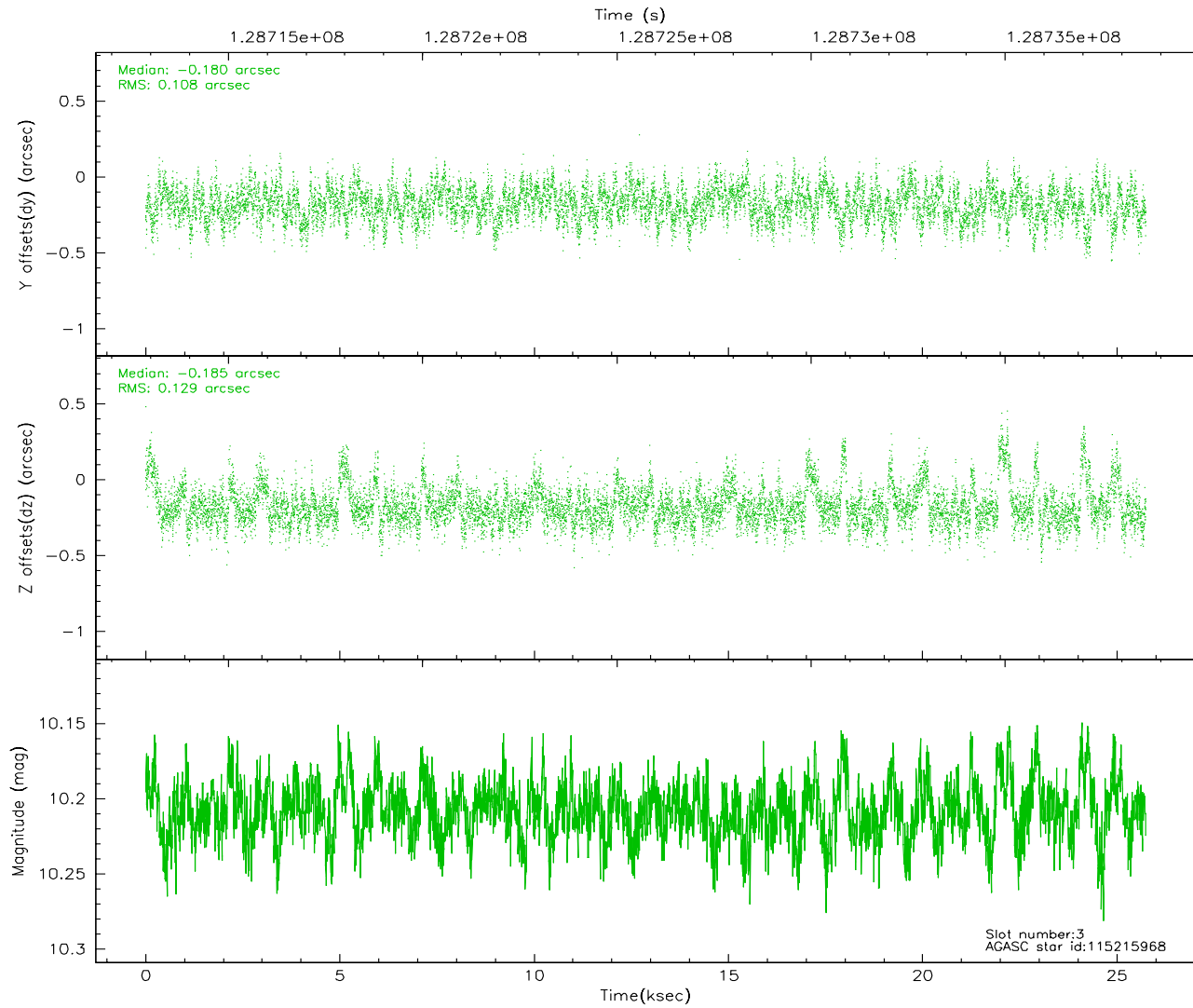
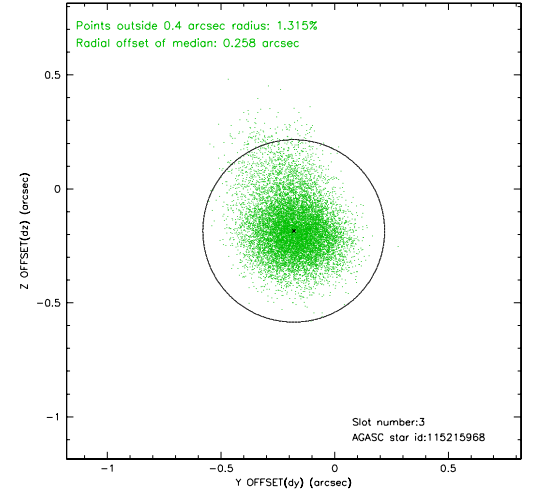
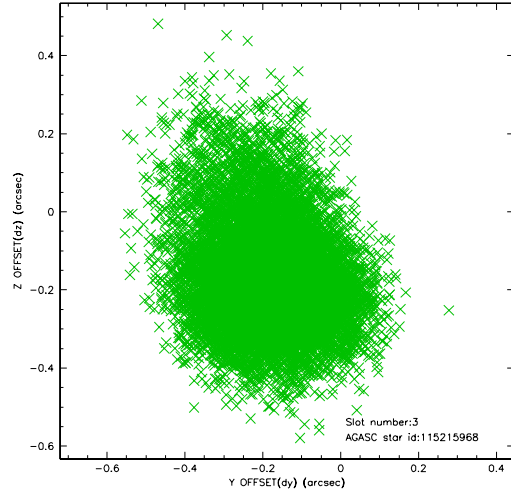
### Slot Statistics

slot	status	id	mag	n_pts	med_dy	med_dz	dr1	dr2	ra	dec	mean_y	mean_z
0	FID	ACIS-S-2	7.11	6281	-0.006	0.056	0.007	0.011	0.000000	0.000000	-755.49	-1665.76
1	FID	ACIS-S-4	7.21	6281	-0.066	-0.012	0.005	0.009	0.000000	0.000000	2157.69	242.54
2	FID	ACIS-S-5	7.24	6281	0.041	-0.034	0.007	0.011	0.000000	0.000000	-1808.13	236.34
3	GUIDE	115215968	10.21	12545	-0.180	-0.185	0.170	0.304	186.327588	13.159527	205.33	2265.17
4	GUIDE	115349744	10.32	12551	0.039	-0.013	0.158	0.255	186.878186	12.752529	-896.49	105.90
5	GUIDE	114952792	9.50	12551	0.173	0.187	0.106	0.178	187.070263	12.344747	-2221.38	-818.86
6	GUIDE	115348424	9.51	12552	0.025	0.101	0.083	0.140	187.199498	13.087929	491.97	-788.96
7	GUIDE	115347400	10.21	12328	-0.051	-0.115	0.175	0.289	186.994146	13.445598	1631.09	148.31

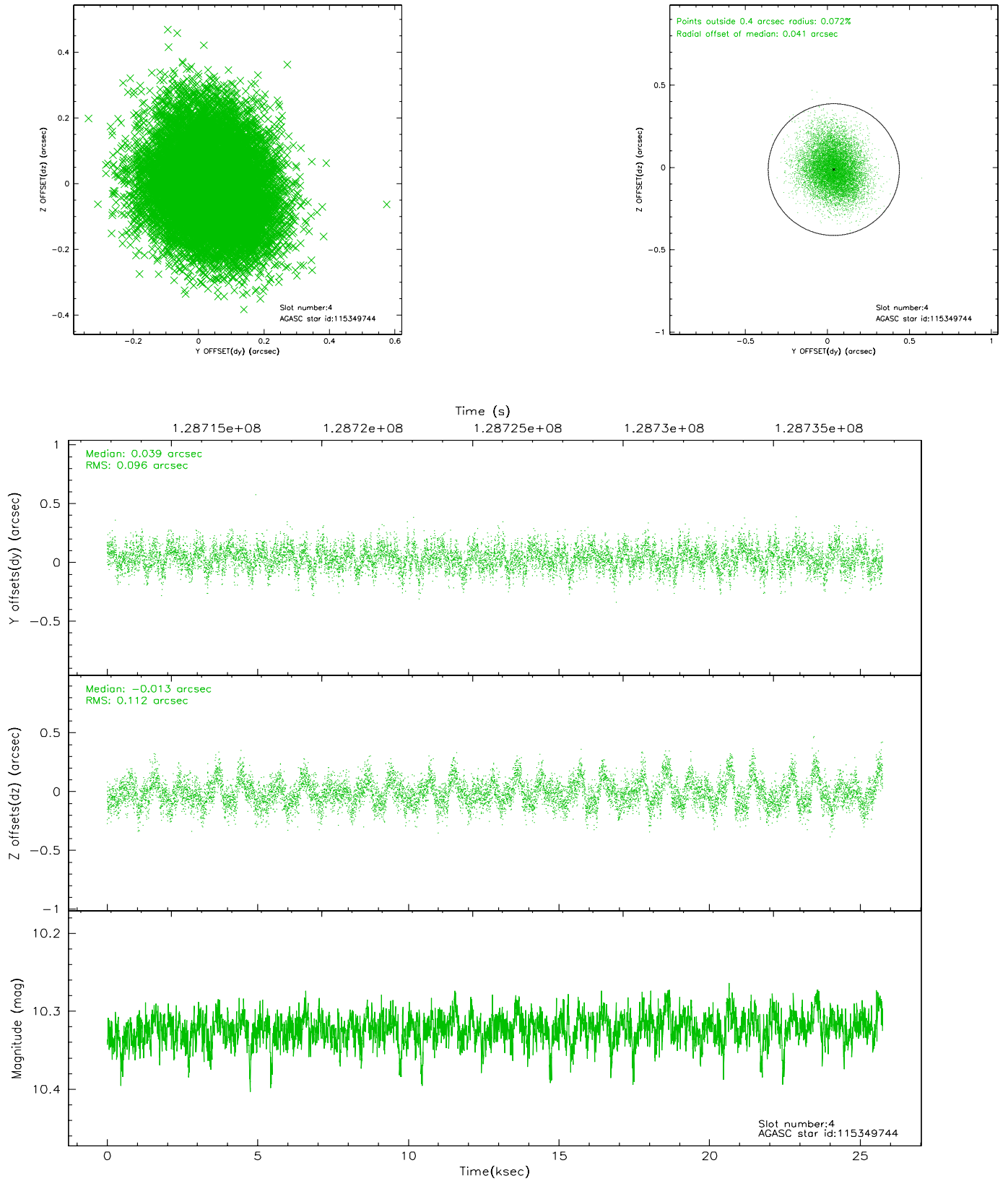


## 2.4 Star Slots

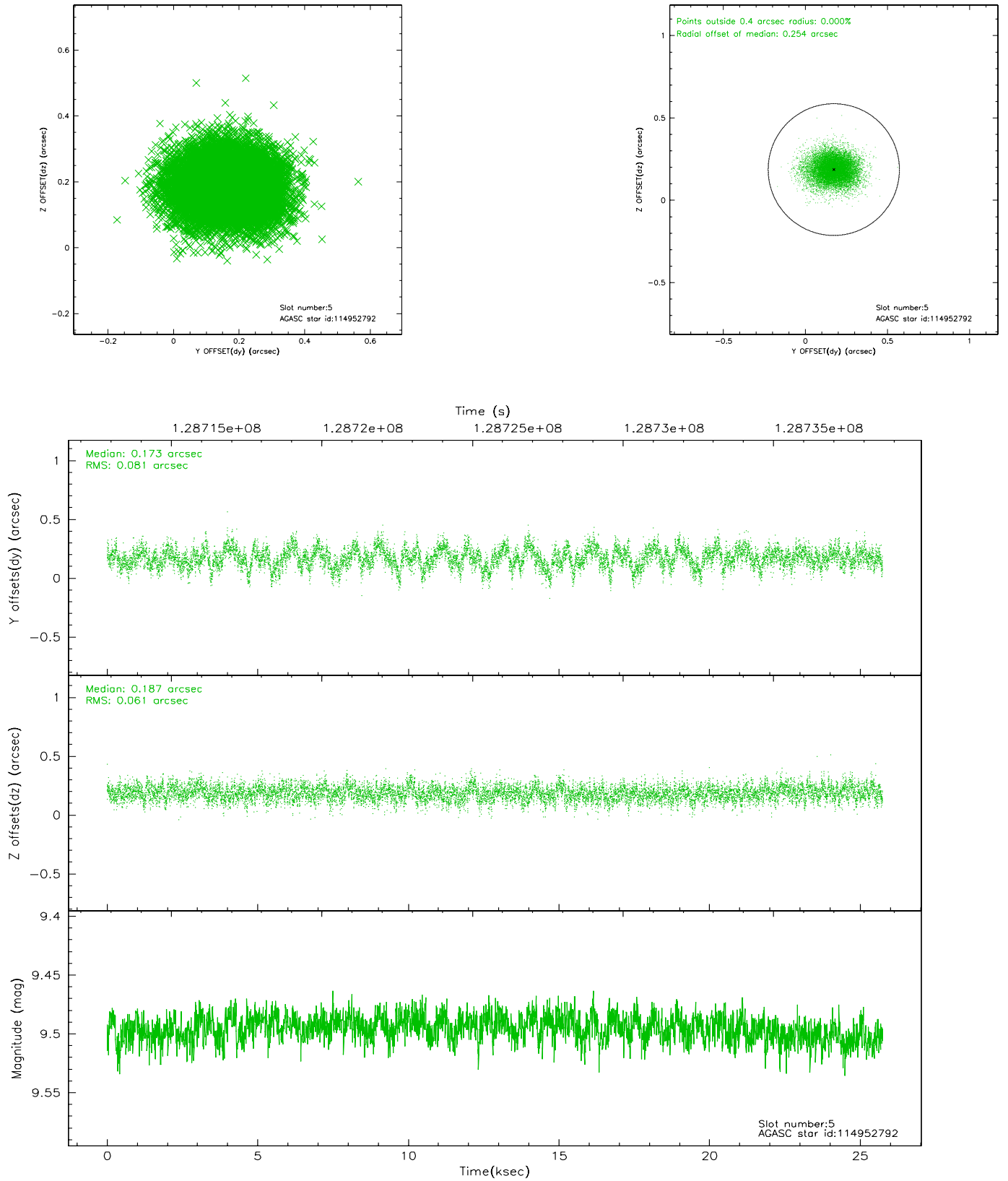
### 2.4.1 Slot 3



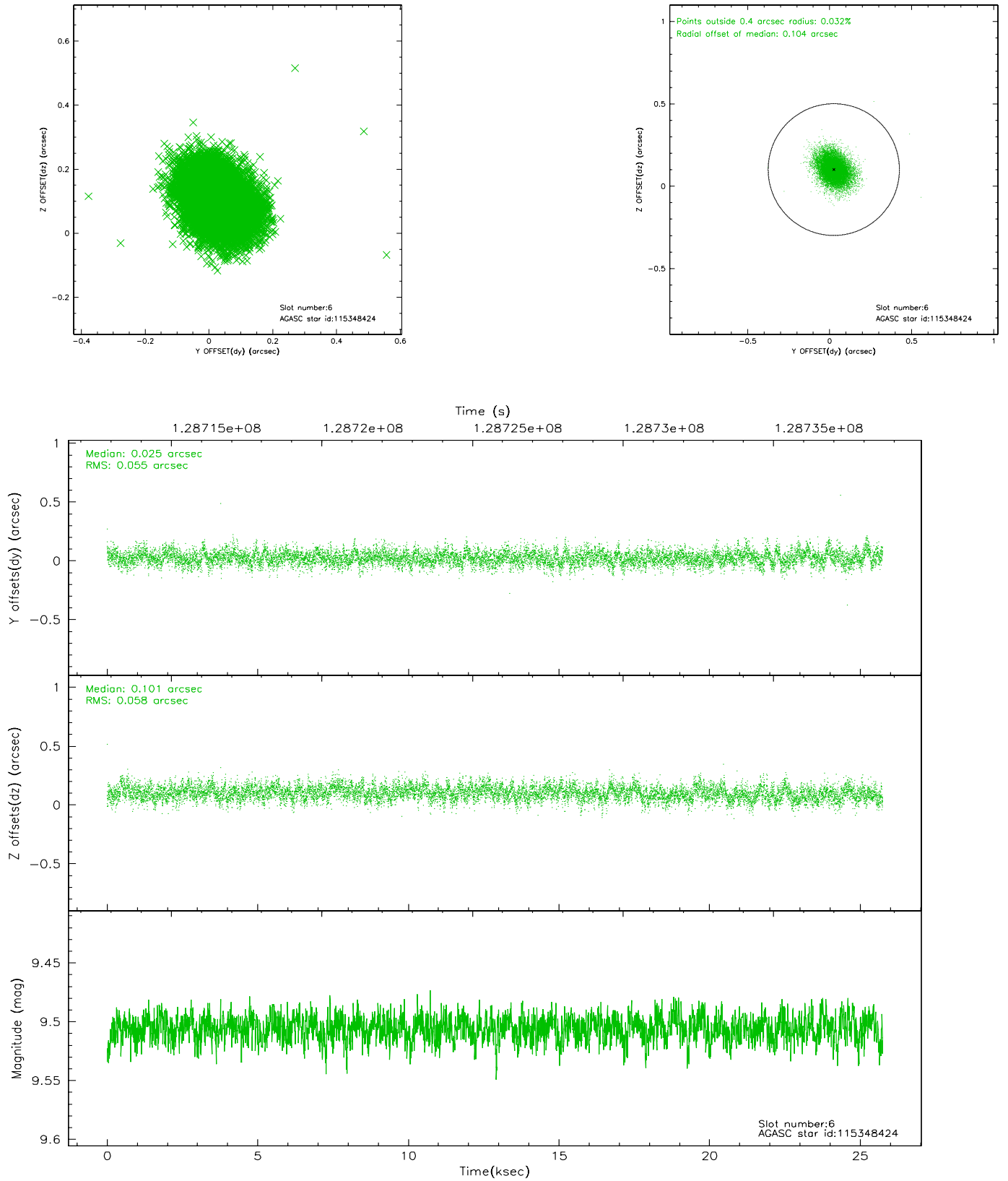
## 2.4.2 Slot 4



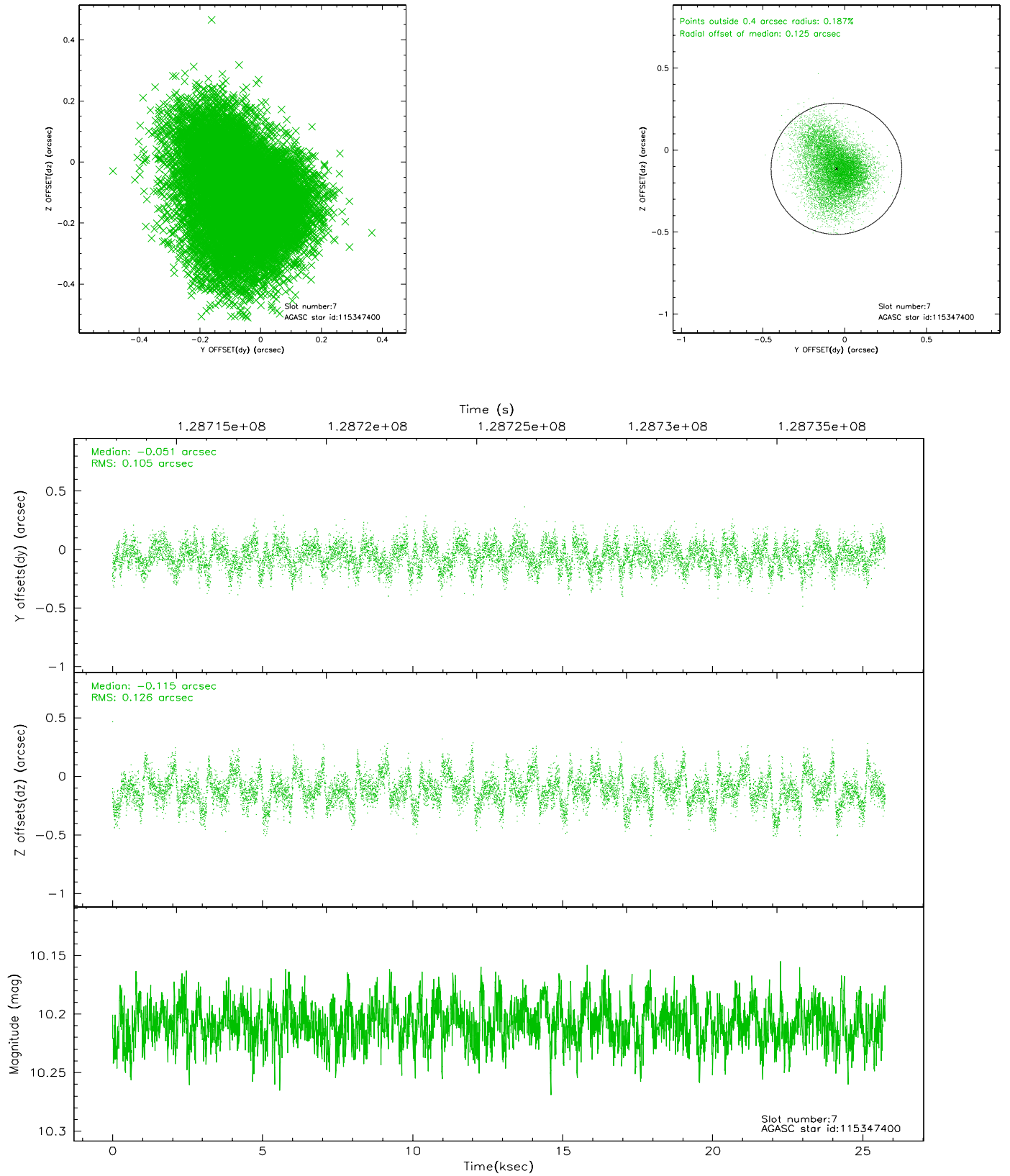
### 2.4.3 Slot 5



## 2.4.4 Slot 6

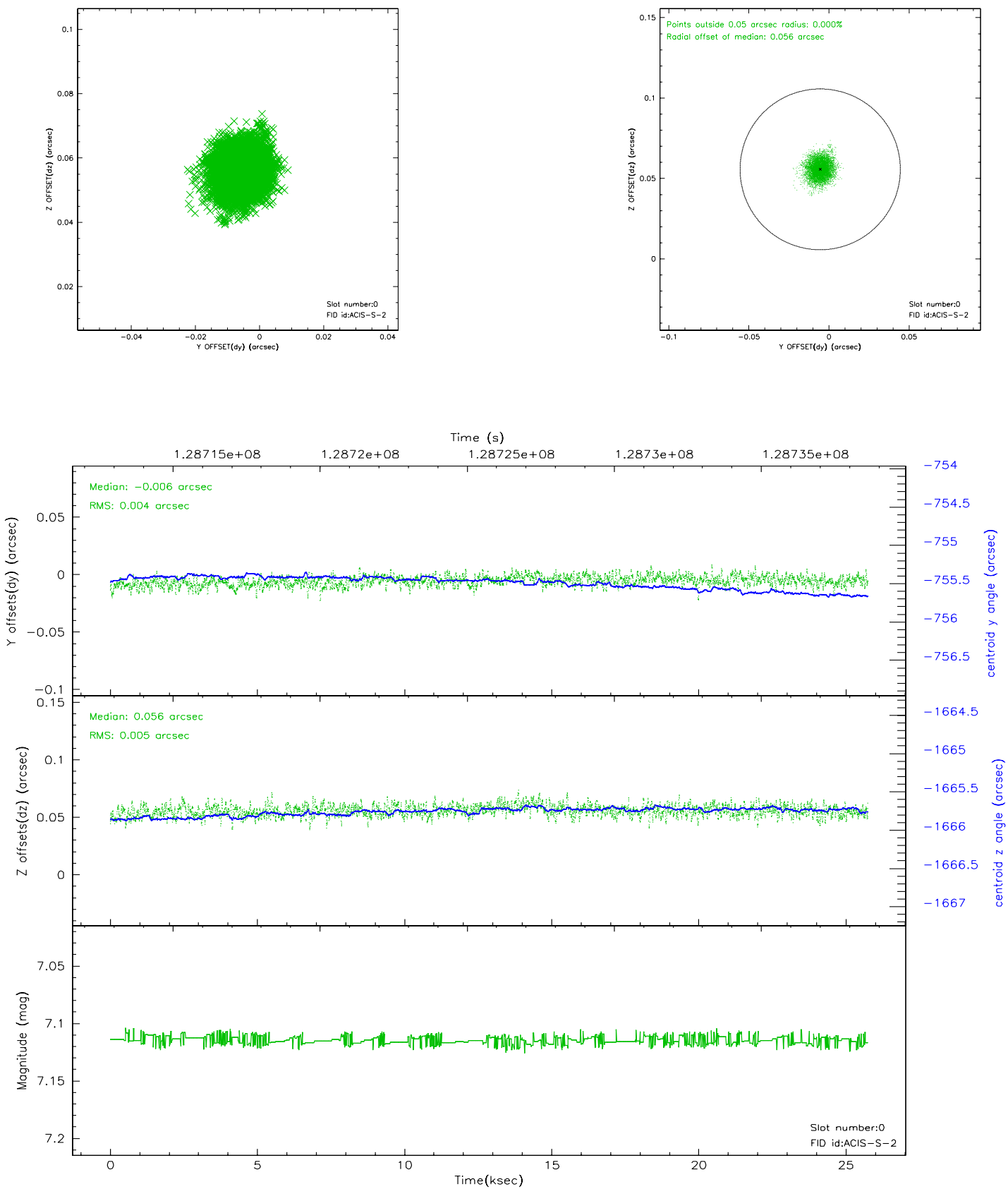


## 2.4.5 Slot 7

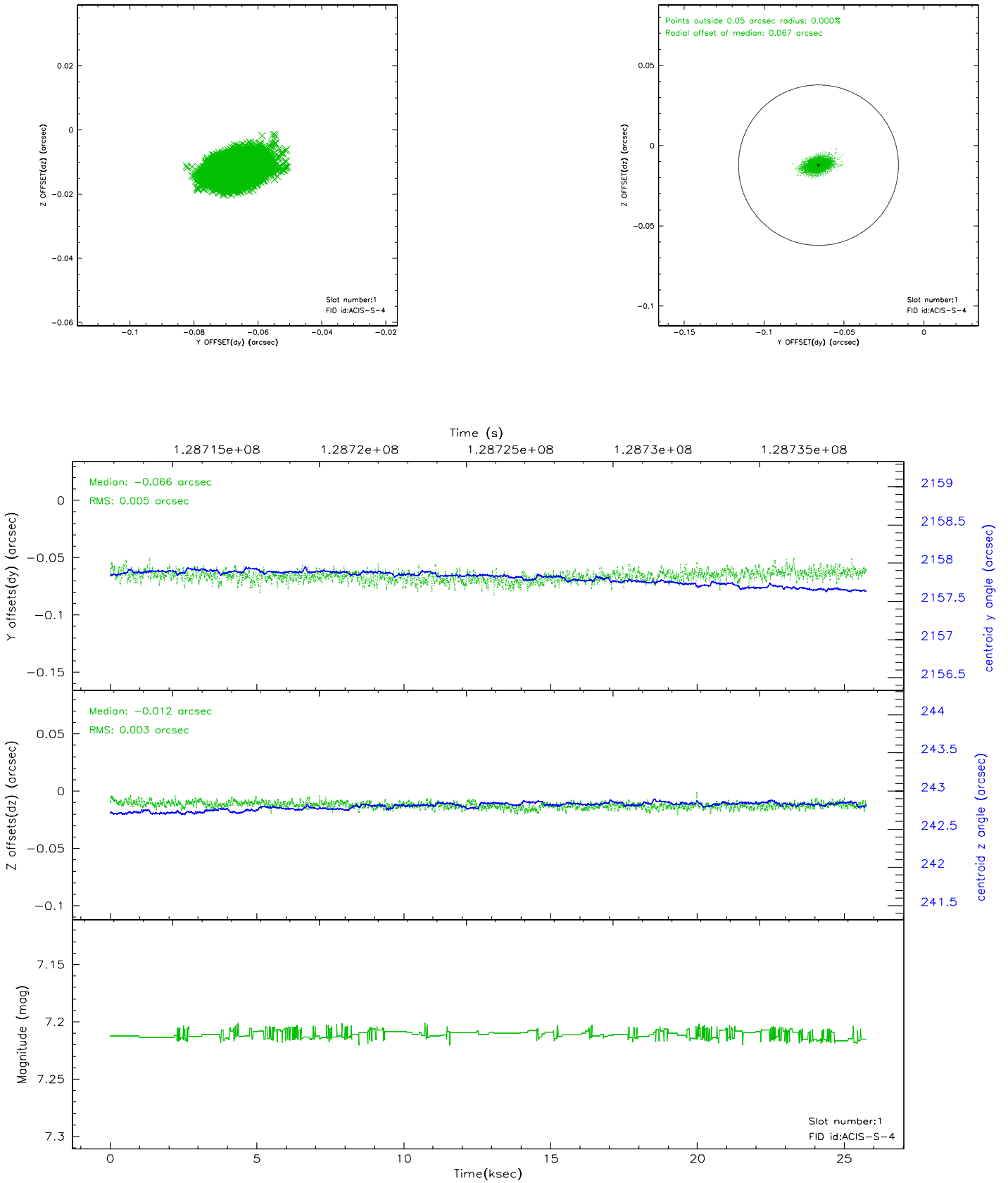


## 2.5 FID Slots

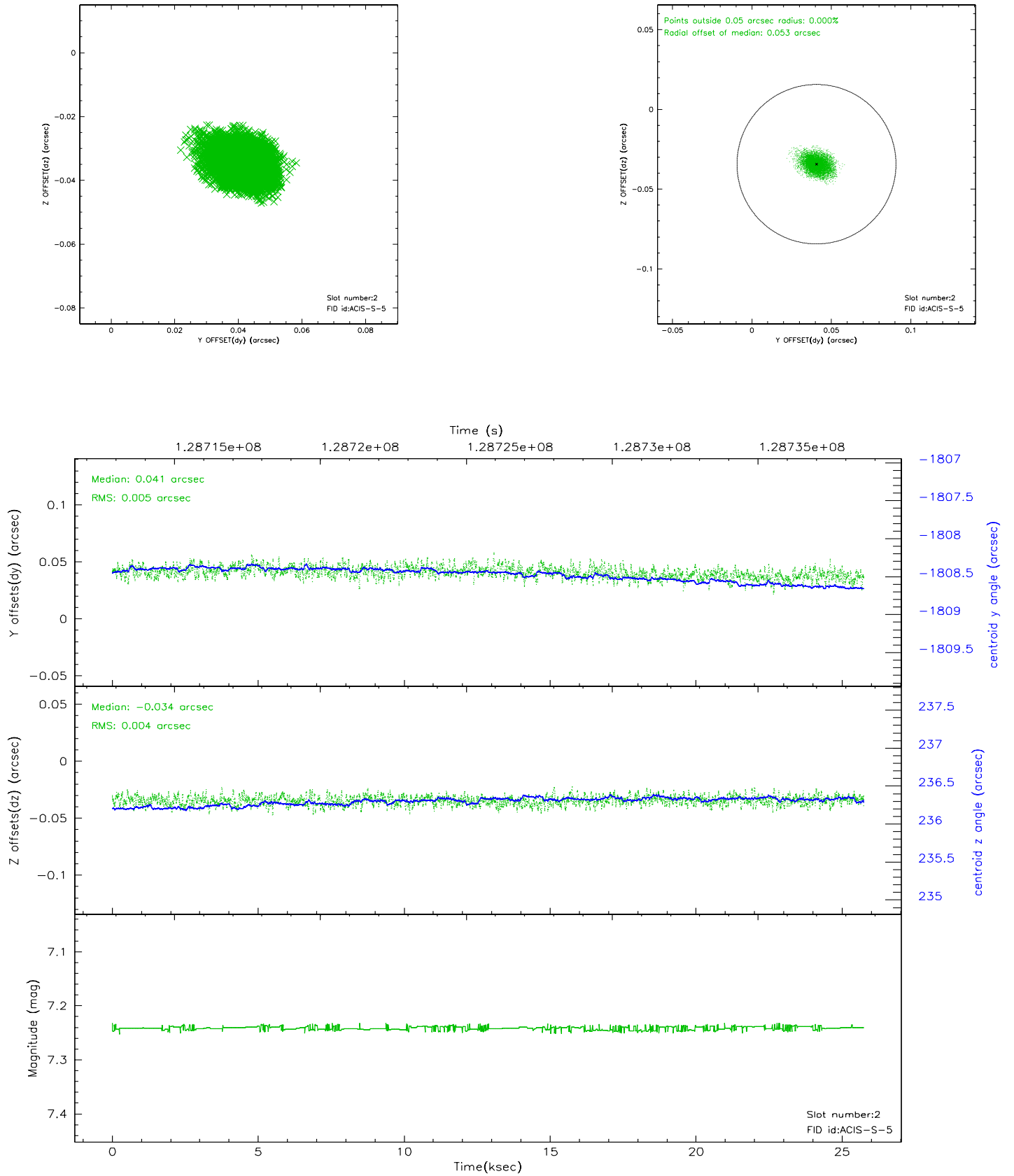
### 2.5.1 Slot 0



## 2.5.2 Slot 1

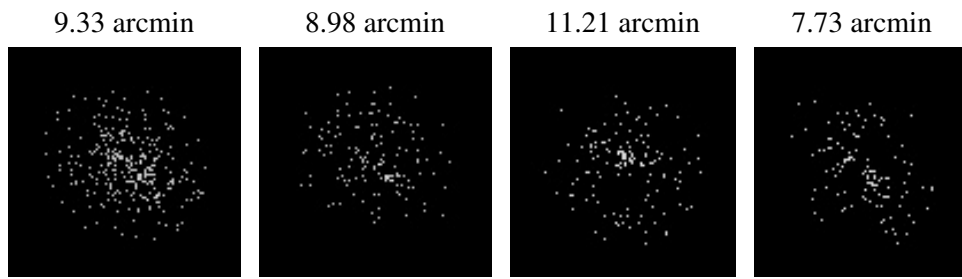


### 2.5.3 Slot 2





### 3 Point Sources



## A Summary

### A.1 Status

V&V Scientist	Jen Lauer
V&V Date (YYYY-MM-DD)	2006.08.30
V&V Edition	1
V&V Disposition and Status	OK
V&V Charge Time	25.404

### A.2 Comments