

V&V Reference Report

L2 ASCDS Version : 8.4.5

Observation 2873 - L2 Version 4
Chandra X-Ray Center

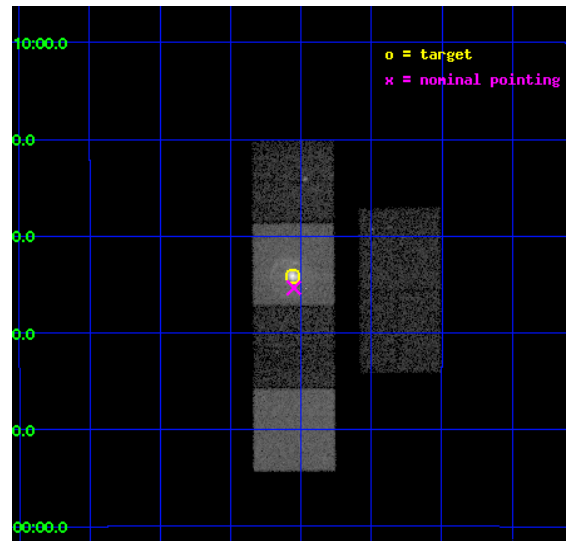
L2 Processing Date : Oct 14 2012

Contents

1	Front	2
2	OBI	3
2.1	OBI	3
2.1.1	Images	3
2.1.2	Bias	3
2.1.3	Parameters	4
2.1.4	Events	4
2.2	Compared Parameters	5
2.3	Aspect	6
2.4	Star Slots	9
2.4.1	Slot 3	9
2.4.2	Slot 4	10
2.4.3	Slot 5	11
2.4.4	Slot 6	12
2.4.5	Slot 7	13
2.5	FID Slots	14
2.5.1	Slot 0	14
2.5.2	Slot 1	15
2.5.3	Slot 2	16
A	Summary	17
A.1	Status	17
A.2	Comments	17

1 Front

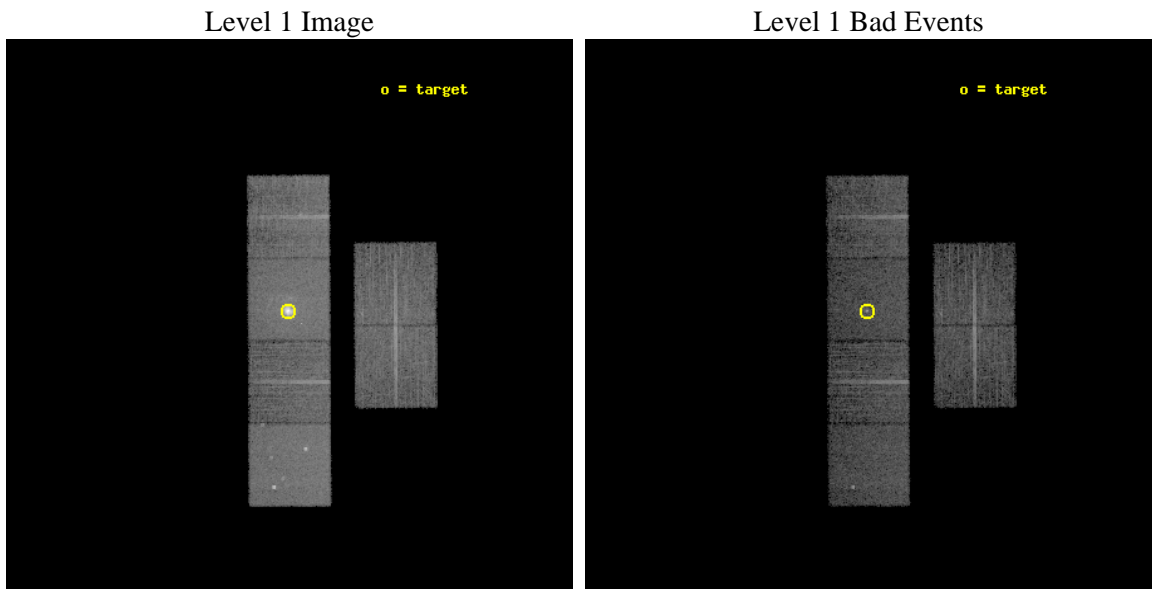
seq_num	590262	Sequence number
obs_id	2873	Observation id
title	AO3B CALIBRATION OBSERVATIONS THE STANDARD CANDLES CAS A AND G21.5-09	Proposal title
observer	Dr. CXC Calibration	Principal investigator
object	G21.5-0.9 [Chip S3, T=120, Offsets=-1,0,0]	Source name
dtcycle	0	
cycle	P	events from which exps? Prim/Second/Both
ra_targ	278.389583	Observer's specified target RA [deg]
dec_targ	-10.568528	Observer's specified target Dec [deg]
ra_nom	278.38770459348	Nominal RA [deg]
dec_nom	-10.589165593594	Nominal Dec [deg]
roll_nom	269.67596941981	Nominal Roll [deg]
revision	4	Processing version of data
ontime	9961.1105103195	Sum of GTIs [s]
livetime	9834.9769311771	Livetime [s]
ontime2	9957.9105601609	Sum of GTIs [s]
ontime3	9960.9873903096	Sum of GTIs [s]
ontime5	9961.0694703162	Sum of GTIs [s]
ontime6	9961.0284303129	Sum of GTIs [s]
ontime7	9961.1105103195	Sum of GTIs [s]
ontime8	9960.9463503361	Sum of GTIs [s]
l2events	136539	Number of level 2 events



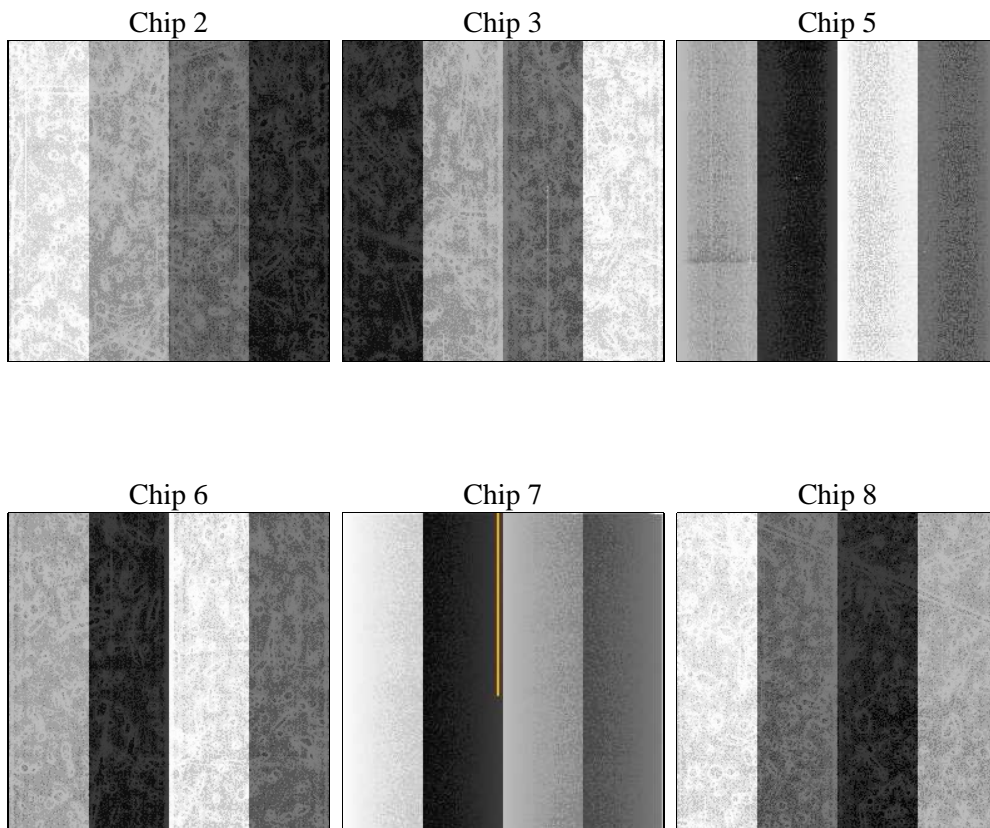
2 OBI

2.1 OBI

2.1.1 Images



2.1.2 Bias



2.1.3 Parameters

obi_num	1	Obi number	sched_exp_time	10000.000000	[s] Scheduled observation exposure time
ascdsver	8.4.5	Processing system revision	ontime	9961.1105103195	Sum of GTIs [s]
caldsver	4.5.2	 	ontime2	9957.9105601609	Sum of GTIs [s]
date	2012-10-14T18:05:32	Date and time of file creation	ontime3	9960.9873903096	Sum of GTIs [s]
revision	4	Processing version of data	ontime5	9961.0694703162	Sum of GTIs [s]
			ontime6	9961.0284303129	Sum of GTIs [s]
			ontime7	9961.1105103195	Sum of GTIs [s]
			ontime8	9960.9463503361	Sum of GTIs [s]
			l1events	483185	Number of level 1 events

2.1.4 Events

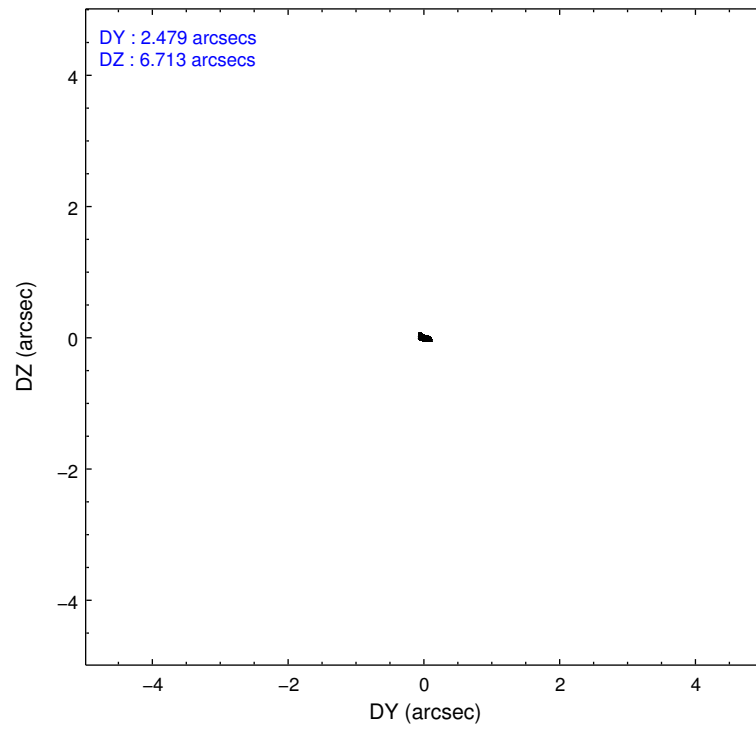
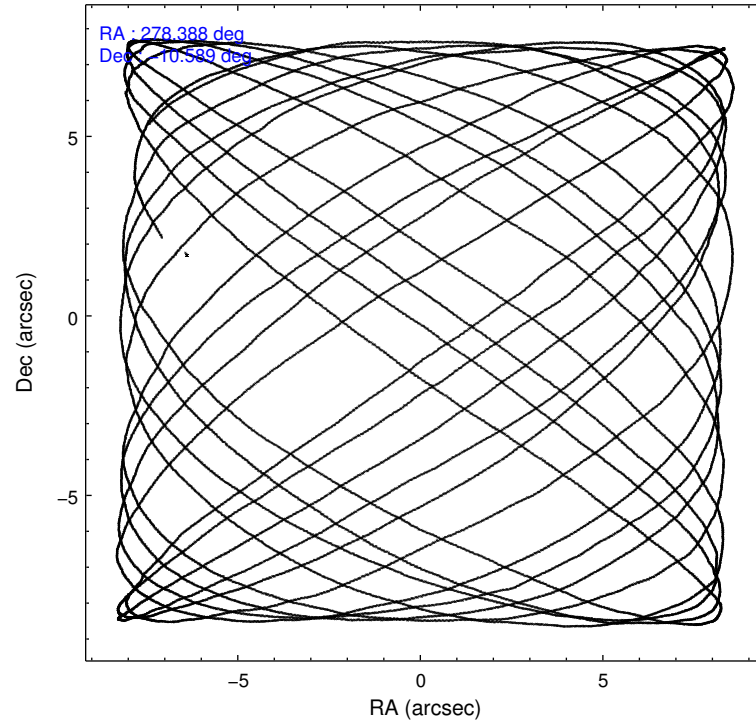
	ccd 2	ccd 3	ccd 5	ccd 6	ccd 7	ccd 8		ccd 2	ccd 3	ccd 5	ccd 6	ccd 7	ccd 8
level 1 events	64156	64224	92006	63446	120114	79239	grade 0 events	3530	3460	4914	3497	11649	6051
rejected events	56480	56657	49739	55365	49247	62395		5%	5%	5%	5%	9%	7%
rejected %	88%	88%	54%	87%	41%	78%	grade 1 events	45	30	115	31	137	54
								0%	0%	0%	0%	0%	0%
							grade 2 events	1487	1413	12727	1559	16443	3450
								2%	2%	13%	2%	13%	4%
							grade 3 events	715	724	1598	797	7300	1779
								1%	1%	1%	1%	6%	2%
							grade 4 events	762	702	1576	779	7148	1621
								1%	1%	1%	1%	5%	2%
							grade 5 events	2479	2658	6677	2706	8293	3611
								3%	4%	7%	4%	6%	4%
							grade 6 events	1186	1274	21474	1452	28381	3953
								1%	1%	23%	2%	23%	4%
							grade 7 events	53952	53963	42925	52625	40763	58720
								84%	84%	46%	82%	33%	74%

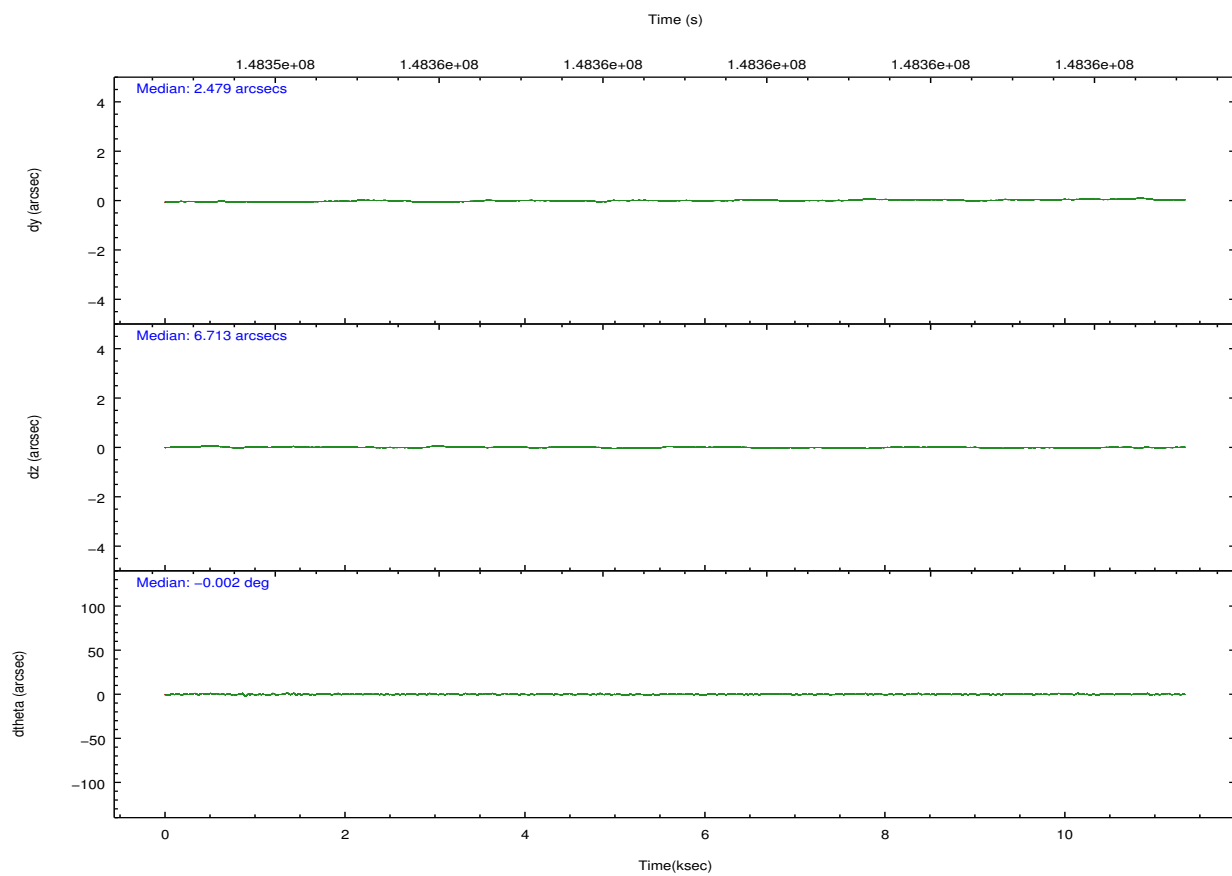
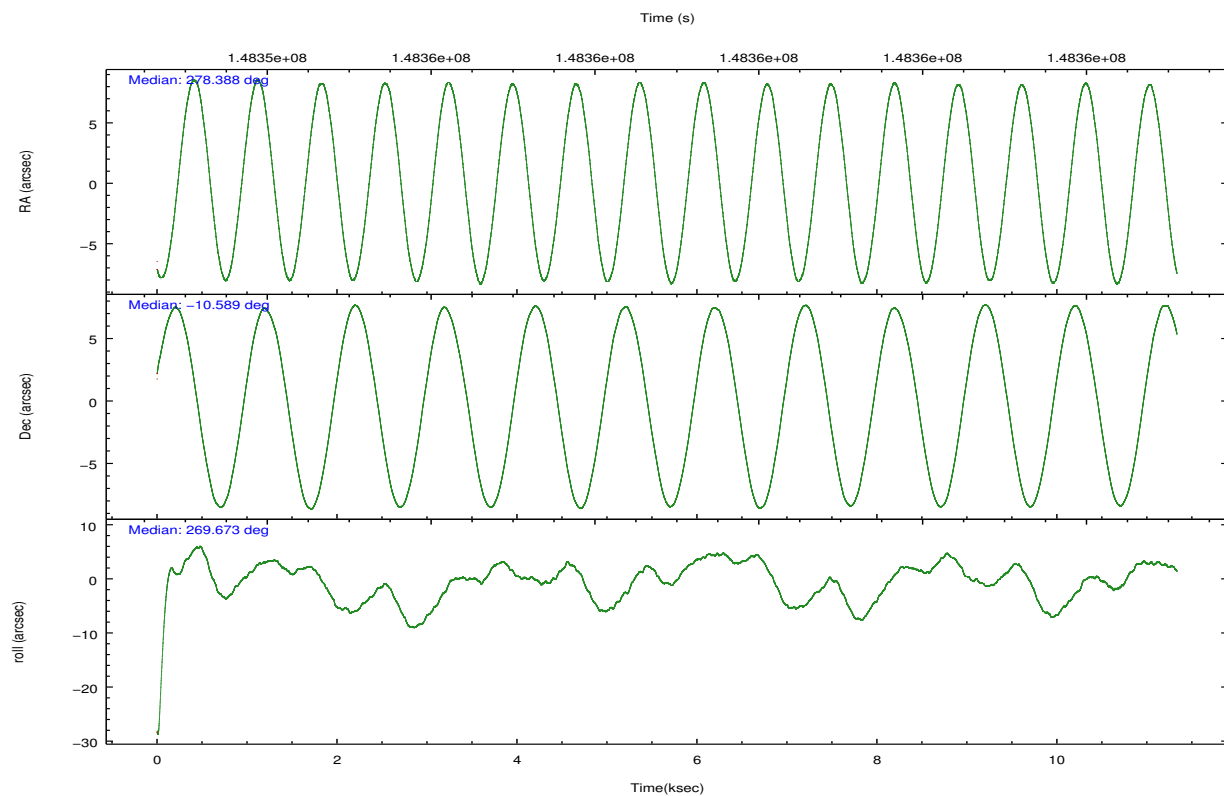
2.2 Compared Parameters

Parameter	Planned	Actual
Instrument	ACIS	ACIS
Detector	ACIS-235678	ACIS-235678
Grating	NONE	NONE
Data mode	FAINT	FAINT
Observation mode	POINTING	POINTING
[deg] Pointing RA	278.373672	278.3877045934772
[deg] Pointing Dec	-10.565728	-10.58916559359401
[deg] Pointing Roll	269.516797	269.6759694198051
[s] Window start time (MET)	147225664.184000	147225664.184000
[s] Window stop time (MET)	149731264.184000	149731264.184000
[mm] SIM focus pos	-0.684267	-0.6828225247311905
[mm] SIM defocus	0	0.001444936568705701
[mm] SIM translation stage pos	-190.132523	-190.1425803651734
[mm] SIM translation stage offset	0	0.01005778216563158
[s] Observation start time (MET)	148354551.184000	148353021.1509
Observation start date	2002-09-14T01:34:47	2002-09-14T01:10:21
[s] Observation end time (MET)	148364551.184000	148365262.72641
Observation end date	2002-09-14T04:21:27	2002-09-14T04:34:22
Read mode	TIMED	TIMED

Parameter	Planned	Actual
Obspar format version number	7	7
Obspar file type	PREDICTED	ACTUAL
Obspar update status	NONE	UPDATED
Number of optional ACIS chips dropped	0	0
On-chip summing requested	N	N
Subarray requested	NONE	NONE
Alternating exposures requested	N	N
[s] Primary exposure time	0.000000	3.2

2.3 Aspect



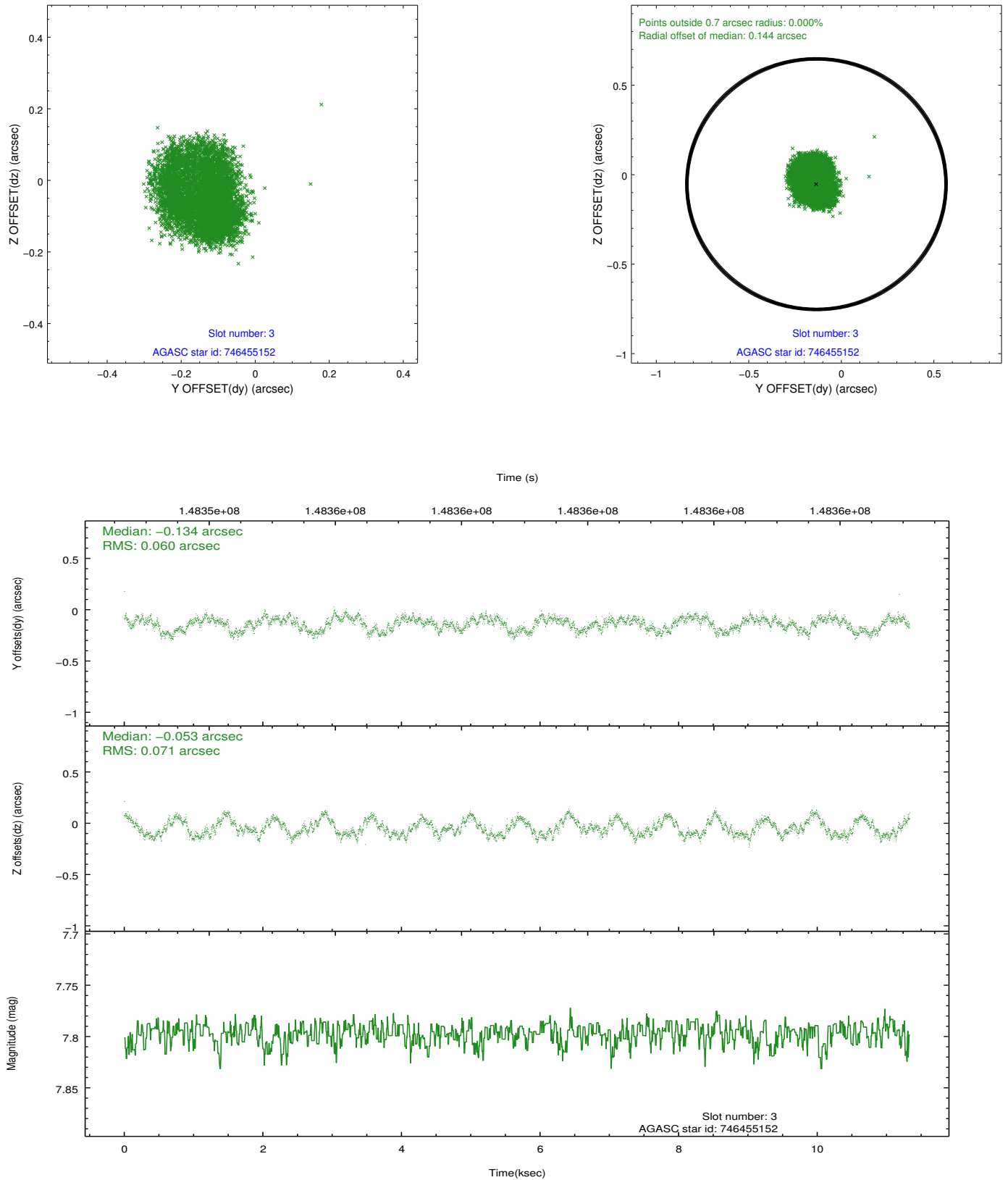


Slot Statistics

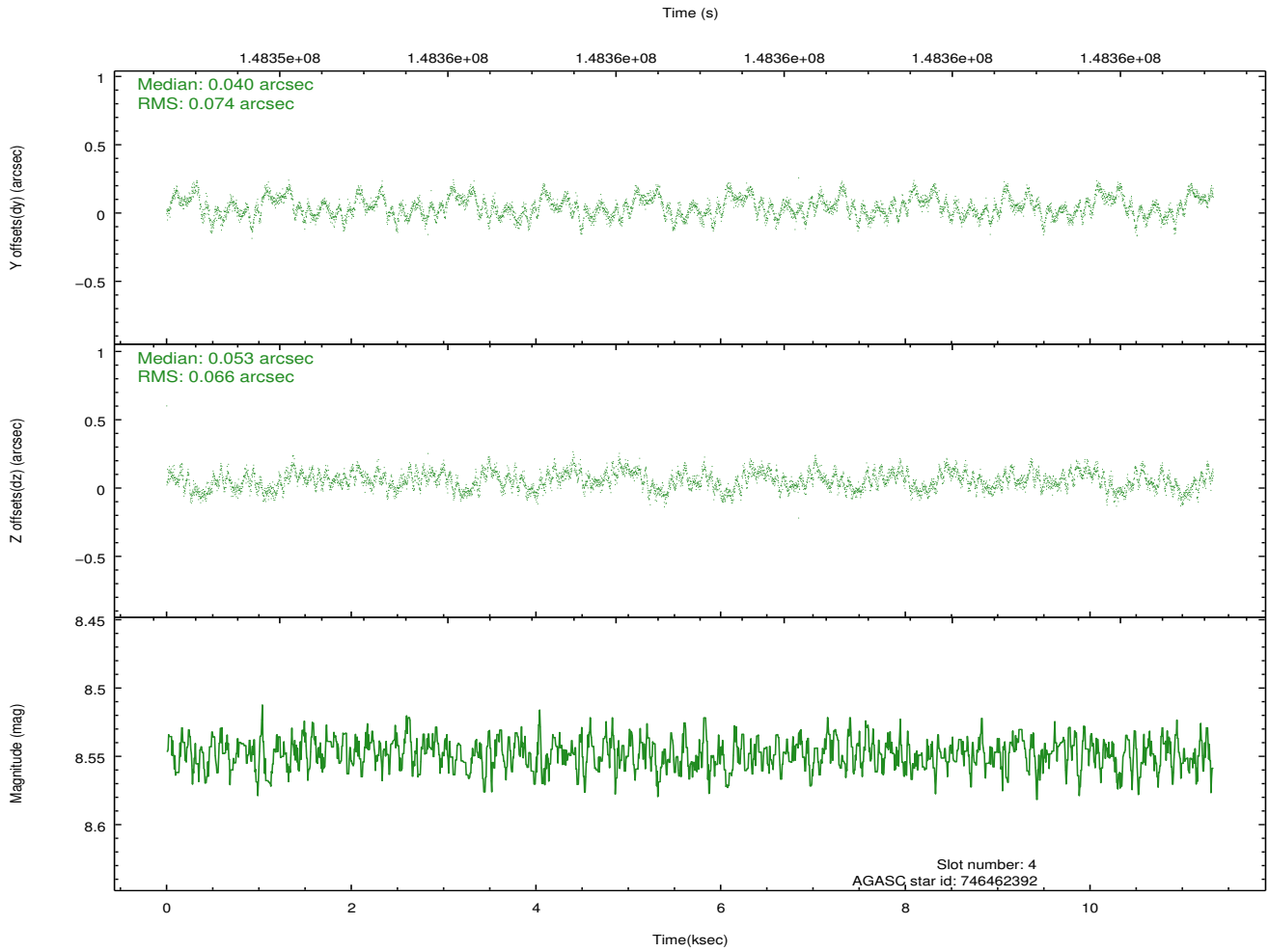
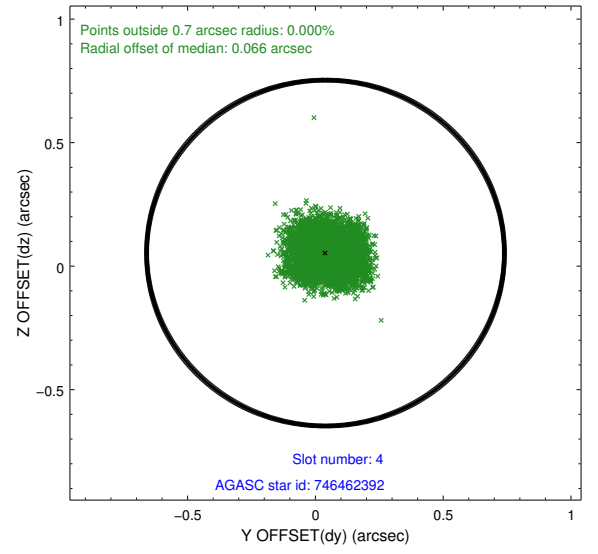
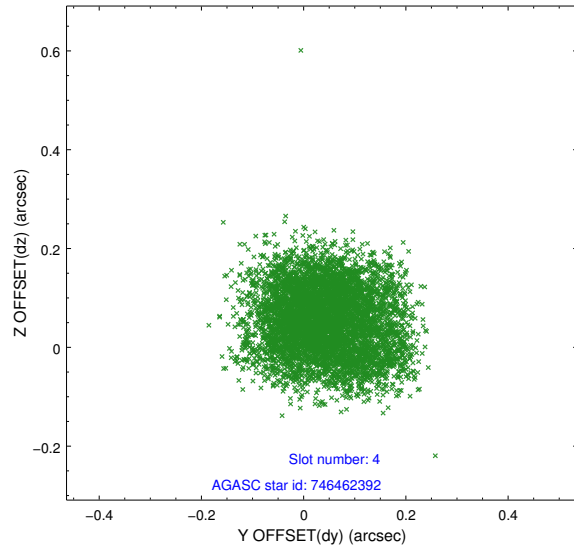
slot	status	id	mag	n_pts	med_dy	med_dz	dr1	dr2	ra	dec	mean_y	mean_z
0	FID	ACIS-S-3	7.35	2765	-0.061	-0.047	0.007	0.012	0.000000	0.000000	57.98	-1856.93
1	FID	ACIS-S-5	7.24	2764	0.055	-0.034	0.007	0.011	0.000000	0.000000	-1808.07	173.66
2	FID	ACIS-S-6	7.35	2765	-0.017	0.091	0.006	0.011	0.000000	0.000000	406.03	818.19
3	GUIDE	746455152	7.80	5529	-0.134	-0.053	0.102	0.150	278.447893	-9.976732	-2122.86	245.40
4	GUIDE	746462392	8.55	5528	0.040	0.053	0.108	0.165	279.038421	-10.890715	1152.53	2360.62
5	GUIDE	746455112	8.93	5528	0.169	-0.211	0.111	0.179	278.266531	-10.703234	498.39	-374.12
6	GUIDE	746460272	8.93	5528	-0.087	0.095	0.119	0.178	278.847488	-10.152127	-1502.13	1666.70
7	GUIDE	746461728	9.74	5523	0.042	0.126	0.348	0.472	278.986921	-10.530755	-142.65	2170.07

2.4 Star Slots

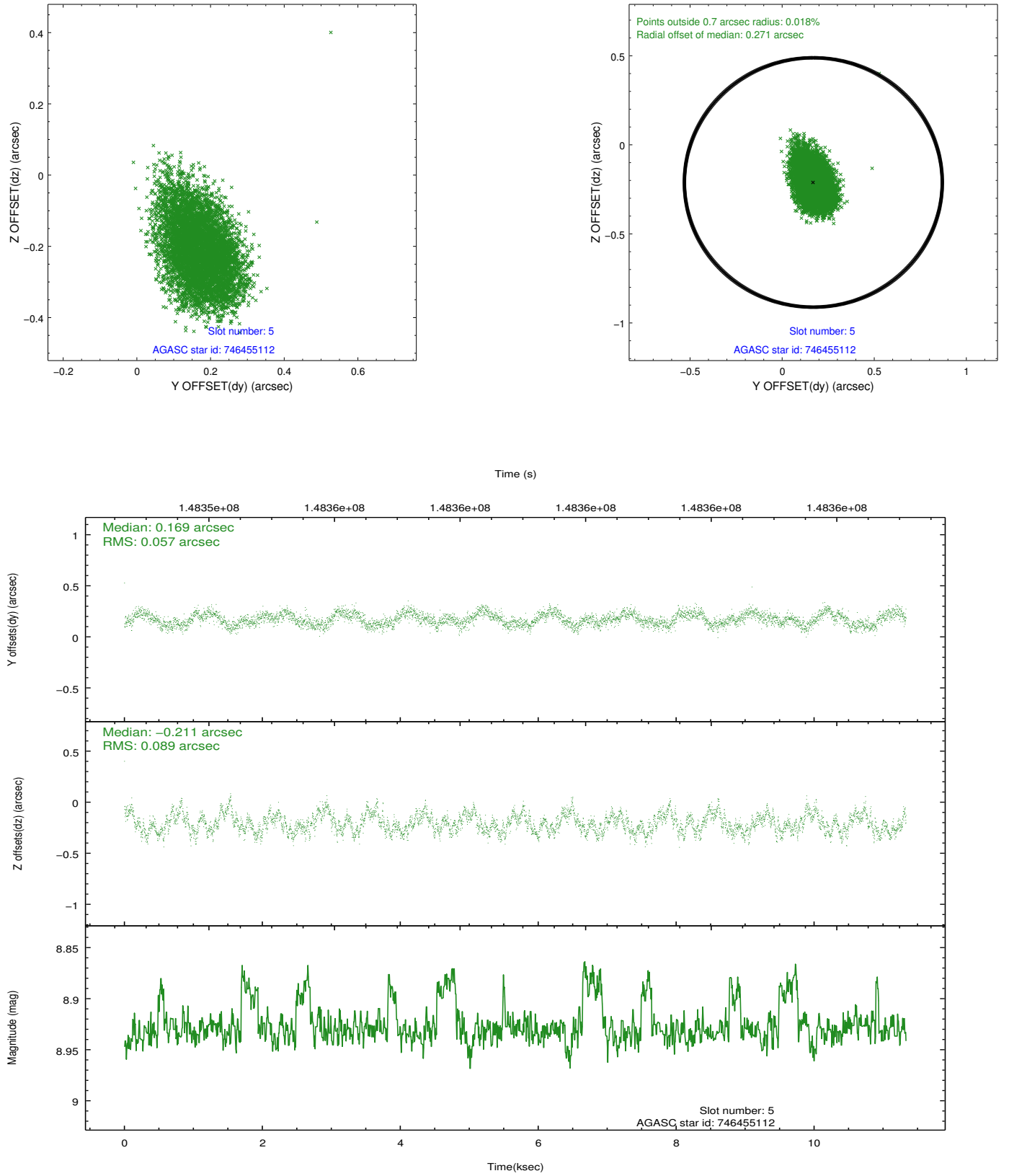
2.4.1 Slot 3



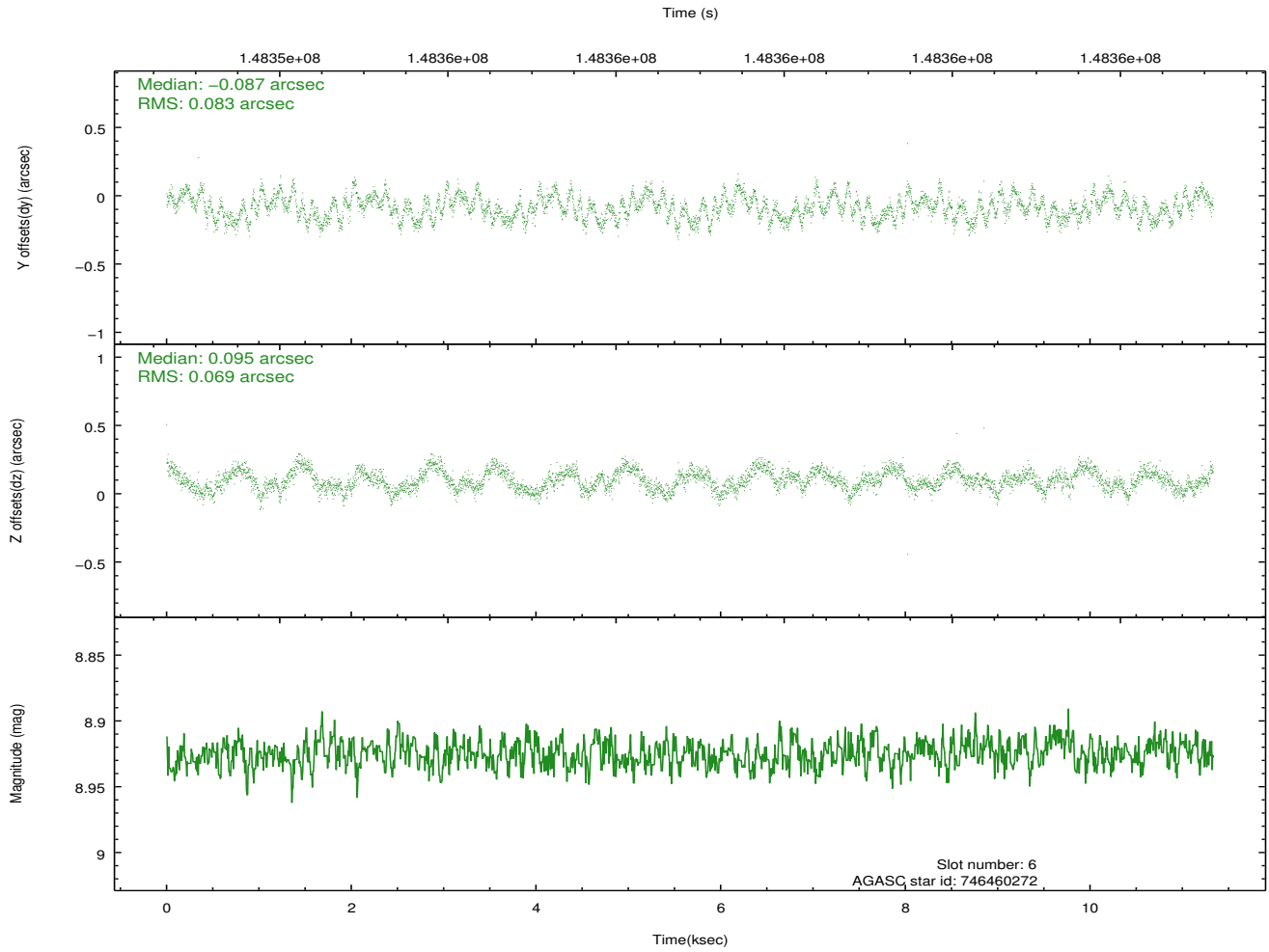
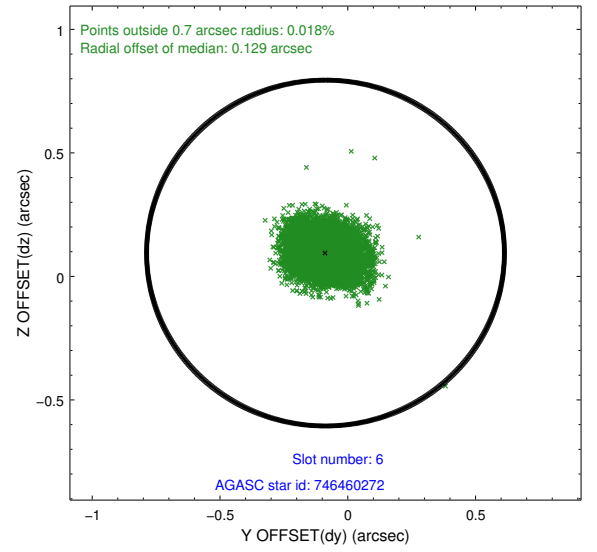
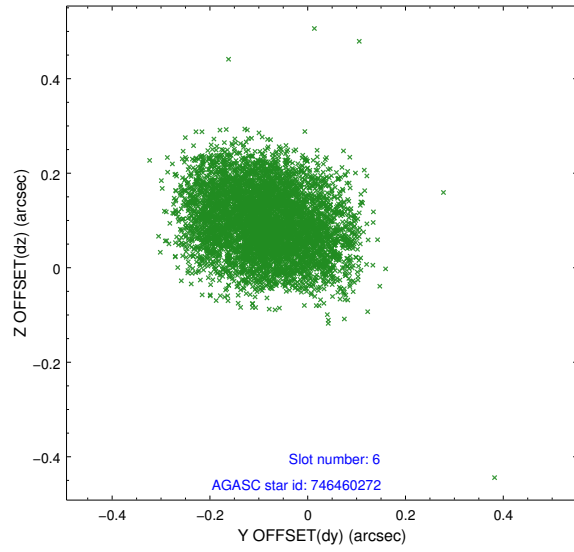
2.4.2 Slot 4



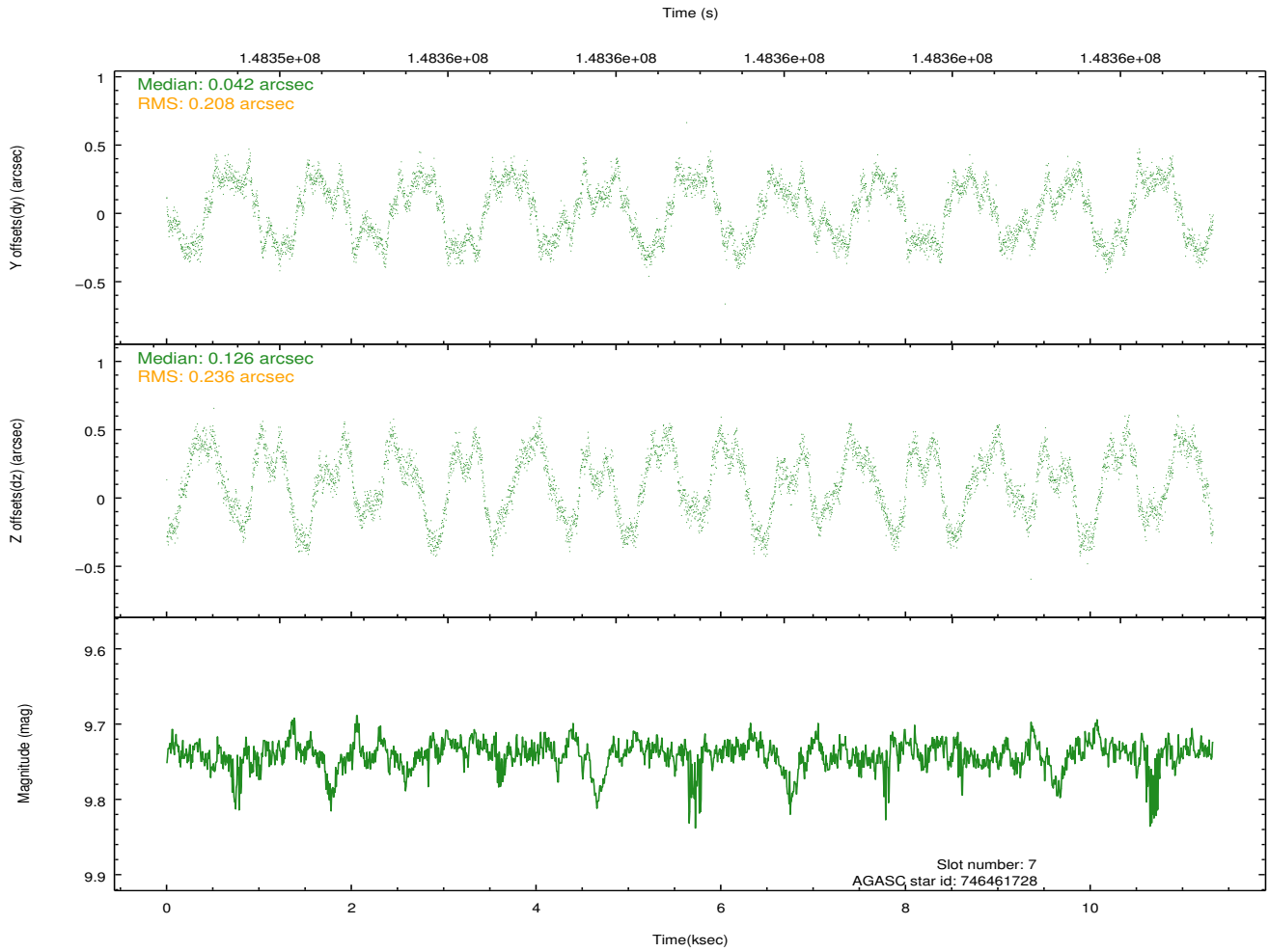
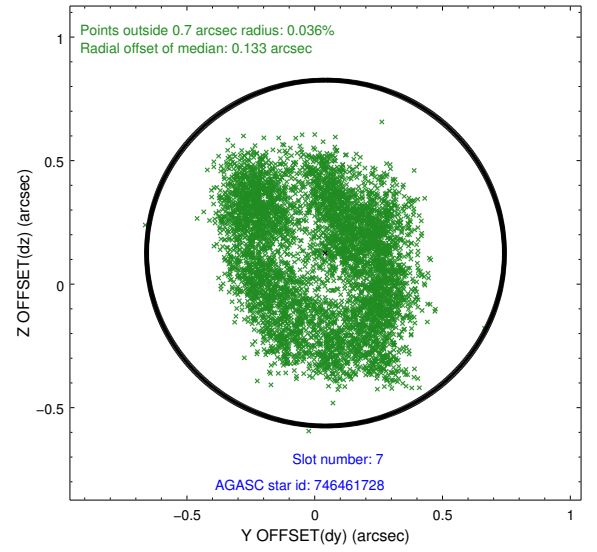
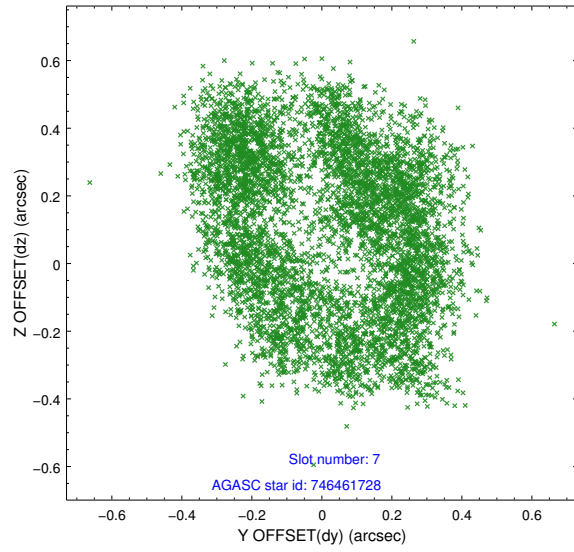
2.4.3 Slot 5



2.4.4 Slot 6

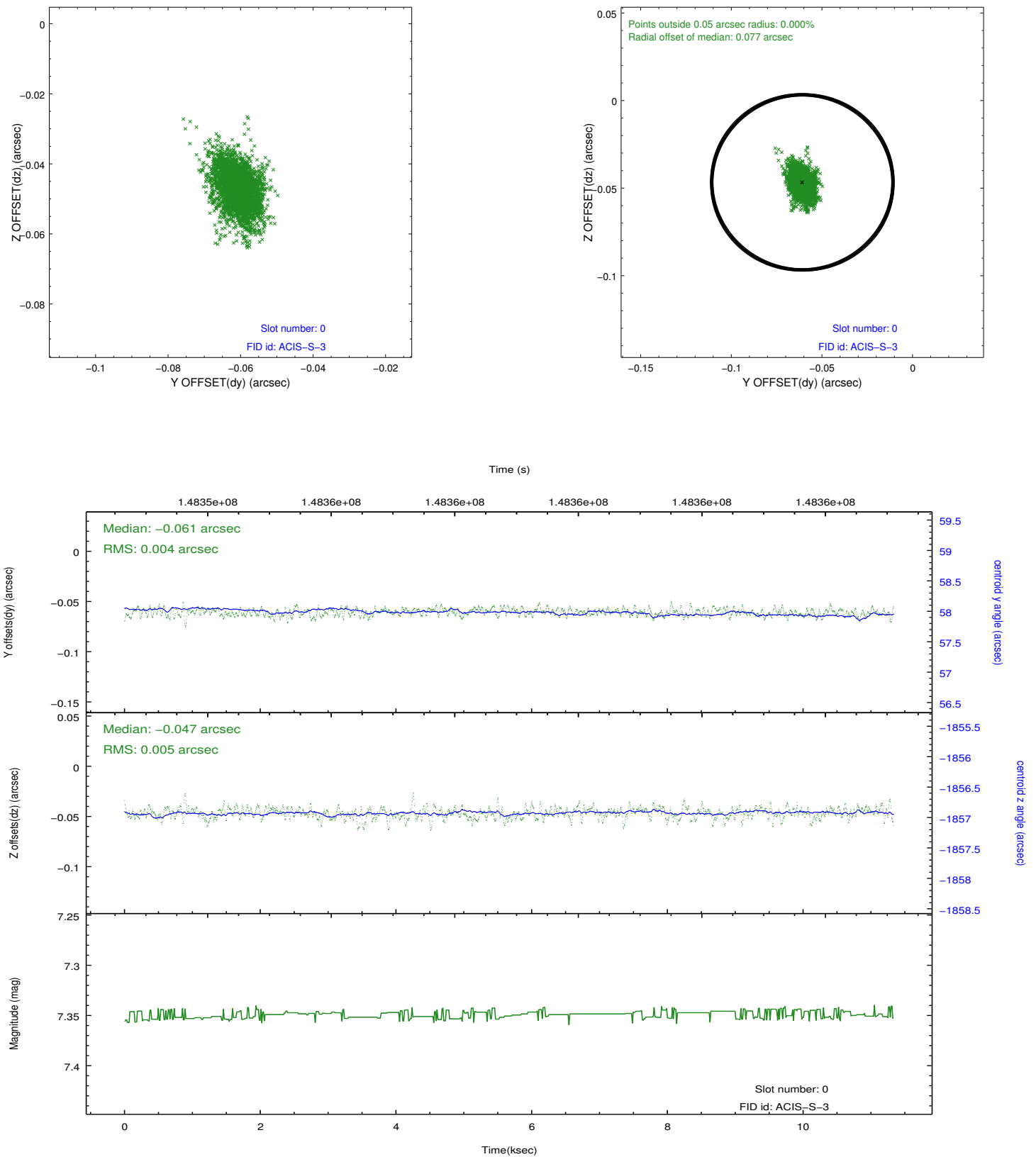


2.4.5 Slot 7

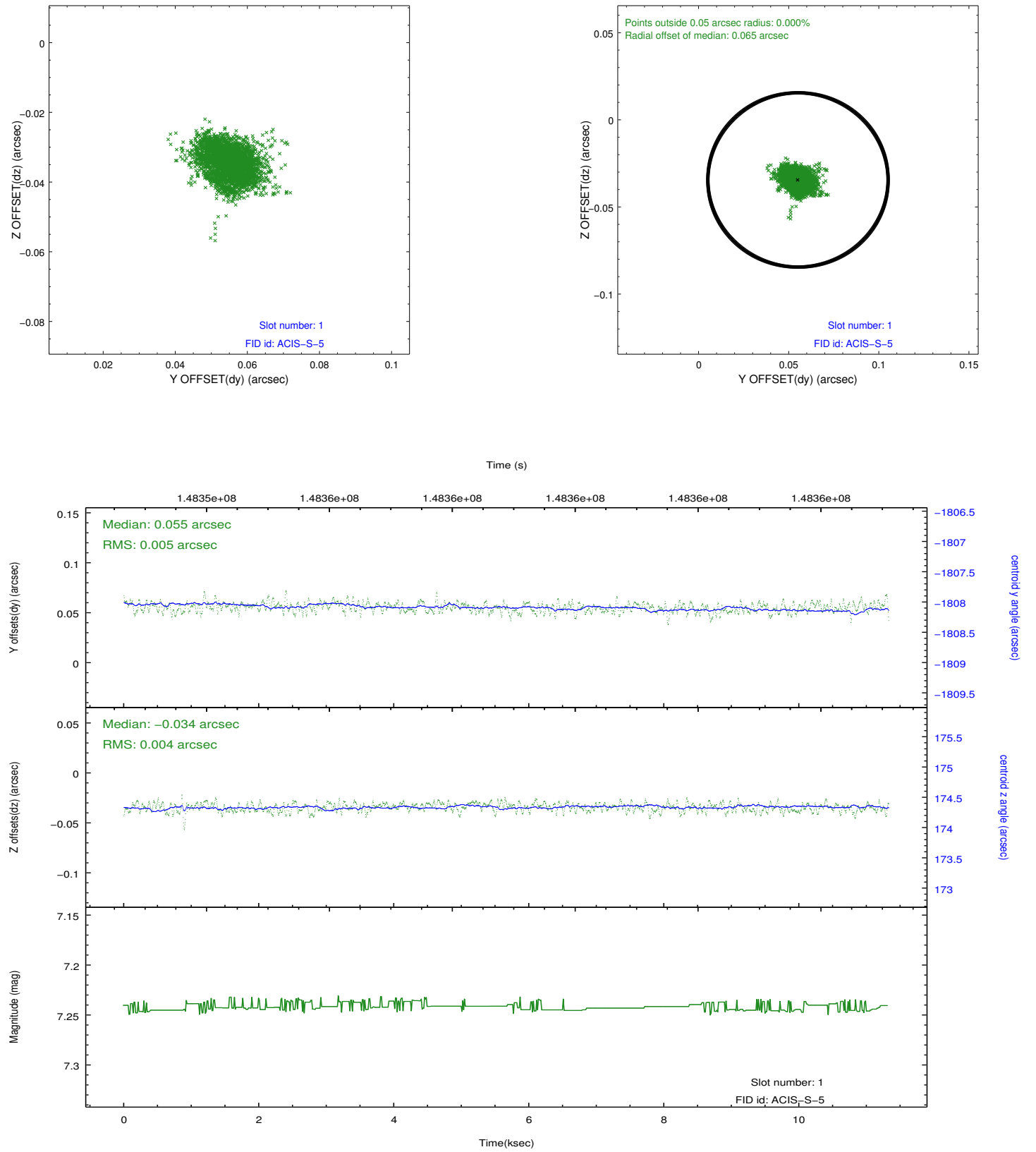


2.5 FID Slots

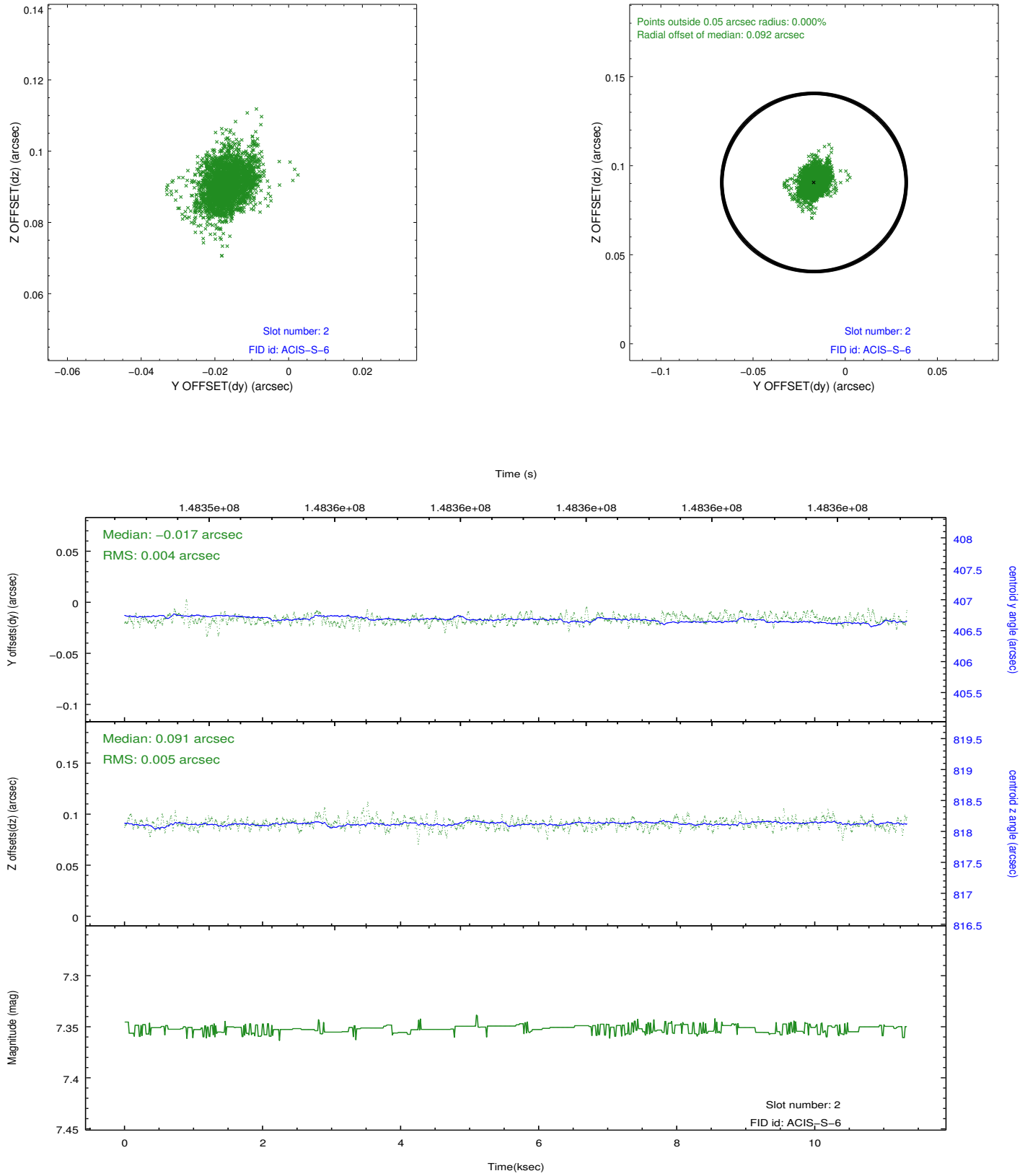
2.5.1 Slot 0



2.5.2 Slot 1



2.5.3 Slot 2



A Summary

A.1 Status

V&V Scientist	Jen Lauer
V&V Date (YYYY-MM-DD)	2012.10.23
V&V Edition	1
V&V Disposition and Status	OK
V&V Charge Time	9.961

A.2 Comments

Window constraint met.