

# V&V Reference Report

## L2 ASCDS Version : 7.6.9

Observation 2873 - L2 Version 001  
Chandra X-Ray Center

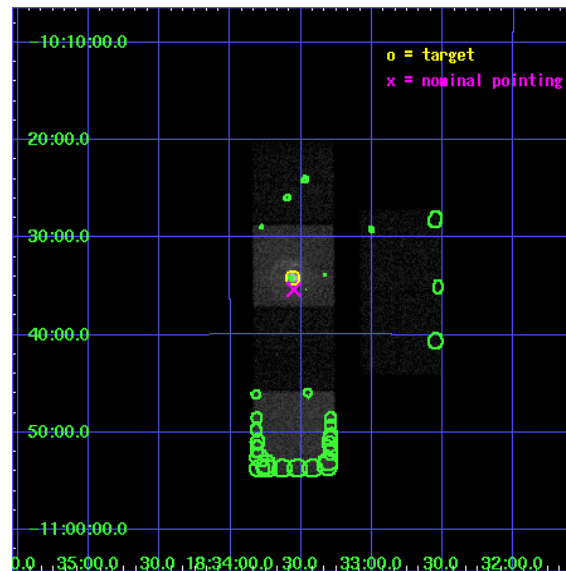
L2 Processing Date : Oct 4 2006

## Contents

<b>1</b>	<b>Front</b>	<b>2</b>
<b>2</b>	<b>OBI</b>	<b>3</b>
2.1	OBI . . . . .	3
2.1.1	Images . . . . .	3
2.1.2	Bias . . . . .	3
2.1.3	Parameters . . . . .	4
2.1.4	Events . . . . .	4
2.2	Compared Parameters . . . . .	5
2.3	Aspect . . . . .	6
2.4	Star Slots . . . . .	9
2.4.1	Slot 3 . . . . .	9
2.4.2	Slot 4 . . . . .	10
2.4.3	Slot 5 . . . . .	11
2.4.4	Slot 6 . . . . .	12
2.4.5	Slot 7 . . . . .	13
2.5	FID Slots . . . . .	14
2.5.1	Slot 0 . . . . .	14
2.5.2	Slot 1 . . . . .	15
2.5.3	Slot 2 . . . . .	16
<b>3</b>	<b>Point Sources</b>	<b>17</b>
<b>A</b>	<b>Summary</b>	<b>18</b>
A.1	Status . . . . .	18
A.2	Comments . . . . .	18

# 1 Front

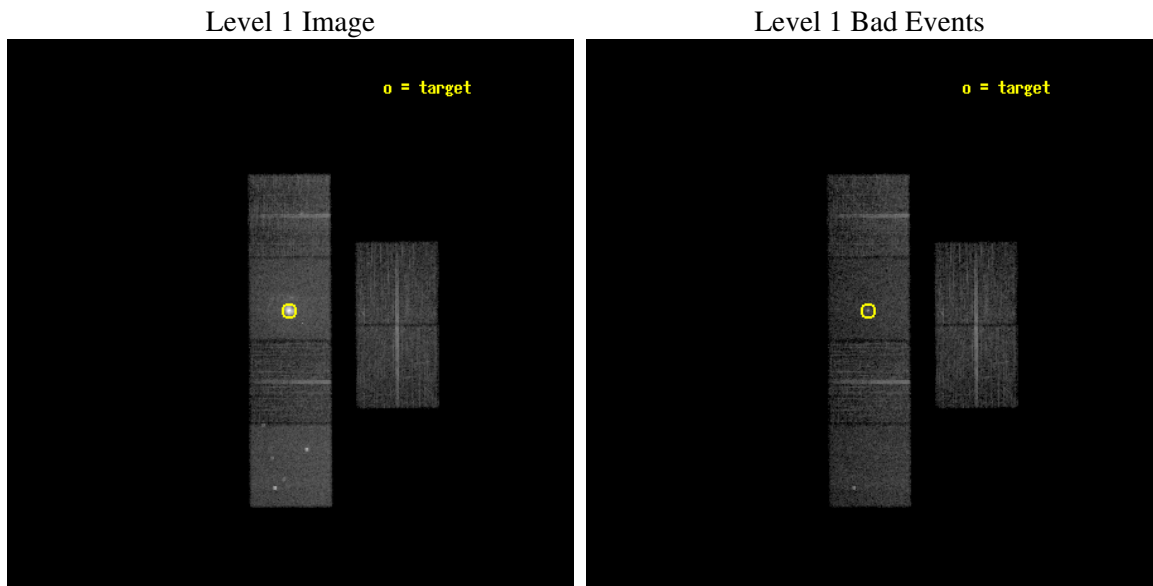
seq_num	590262
obs_id	2873
title	AO3B CALIBRATION OBSERVATIONS THE STANDARD CANDLES CAS A AND G21.5-09
observer	Dr. CXC Calibration
object	G21.5-0.9 [Chip S3, T=120, Offsets=-1,0,0]
dtcycle	0
cycle	P
ra_targ	278.389583
dec_targ	-10.568528
ra_nom	278.38770459348
dec_nom	-10.589165593594
roll_nom	269.67596941981
revision	3
ontime	9961.5999628901
livetime	9835.4601860047
ontime2	9958.3589727283
ontime3	9961.5999628901
ontime5	9961.5999628901
ontime6	9961.5999628901
ontime7	9961.5999628901
ontime8	9961.5999628901
l2events	132613



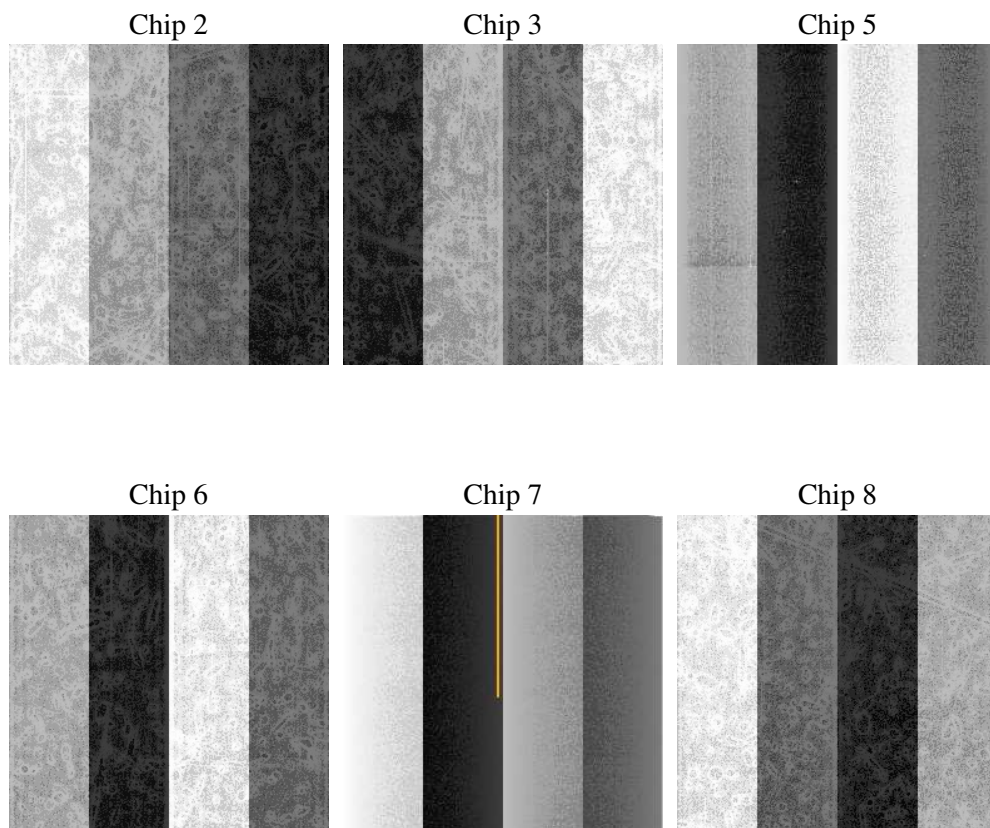
## 2 OBI

### 2.1 OBI

#### 2.1.1 Images



#### 2.1.2 Bias



### 2.1.3 Parameters

obi_num	1
ascdsver	7.6.9
caldbver	3.2.3
date	2006-10-04T09:28:39
revision	3

sched_exp_time	10000.000000
ontime	9966.0780819654
ontime2	9962.8370918036
ontime3	9966.0780819654
ontime5	9966.0780819654
ontime6	9966.0780819654
ontime7	9966.0780819654
ontime8	9966.0780819654
l1events	483185

### 2.1.4 Events

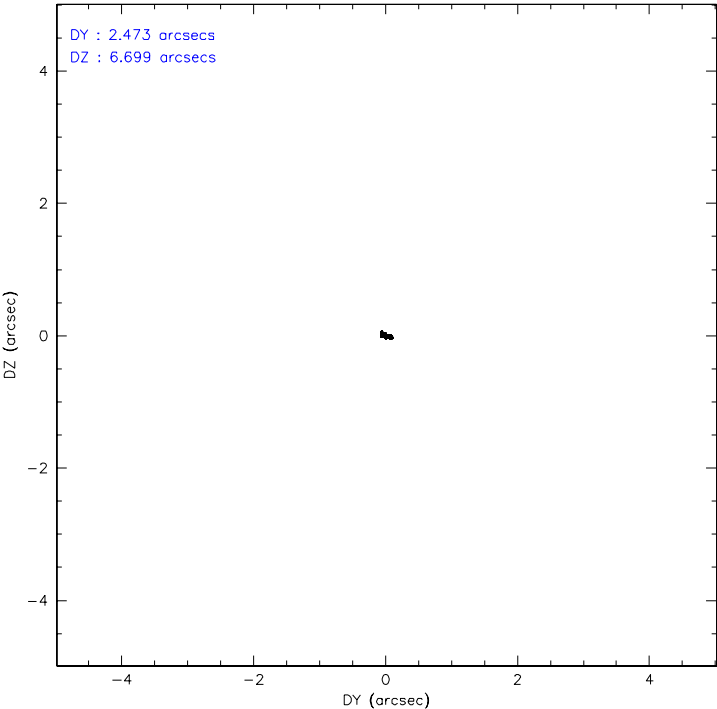
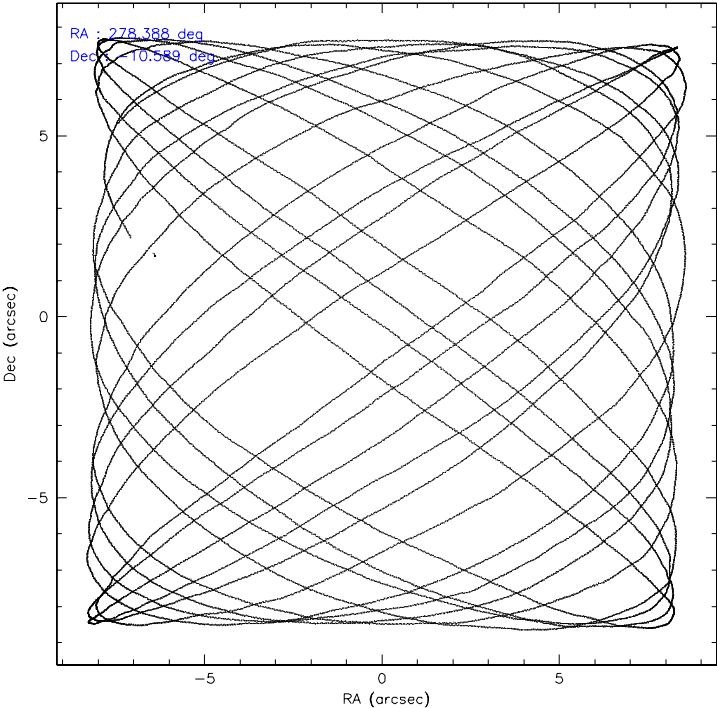
	ccd 2	ccd 3	ccd 5	ccd 6	ccd 7	ccd 8
level 1 events	64156	64224	92006	63446	120114	79239
rejected events	56478	56656	51002	55363	52000	62393
rejected %	88%	88%	55%	87%	43%	78%

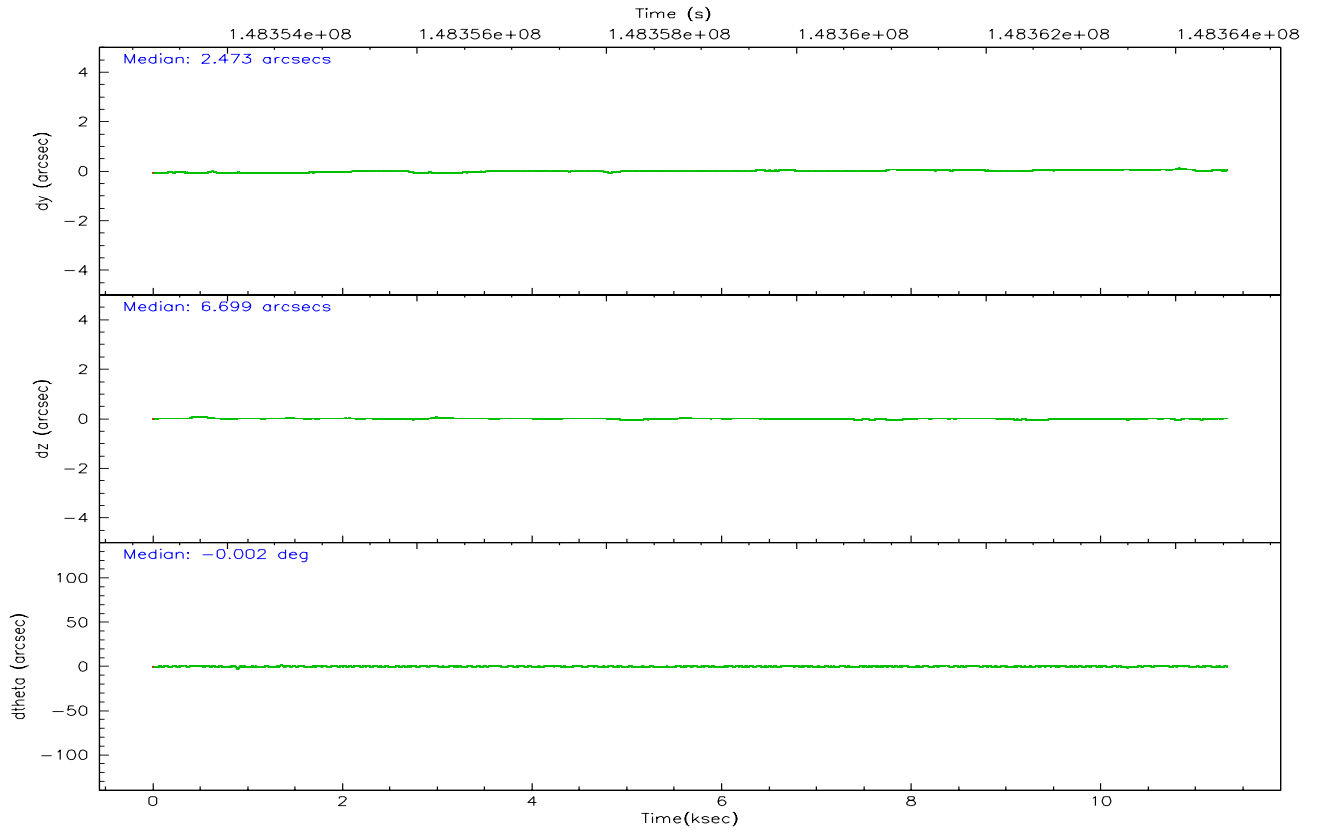
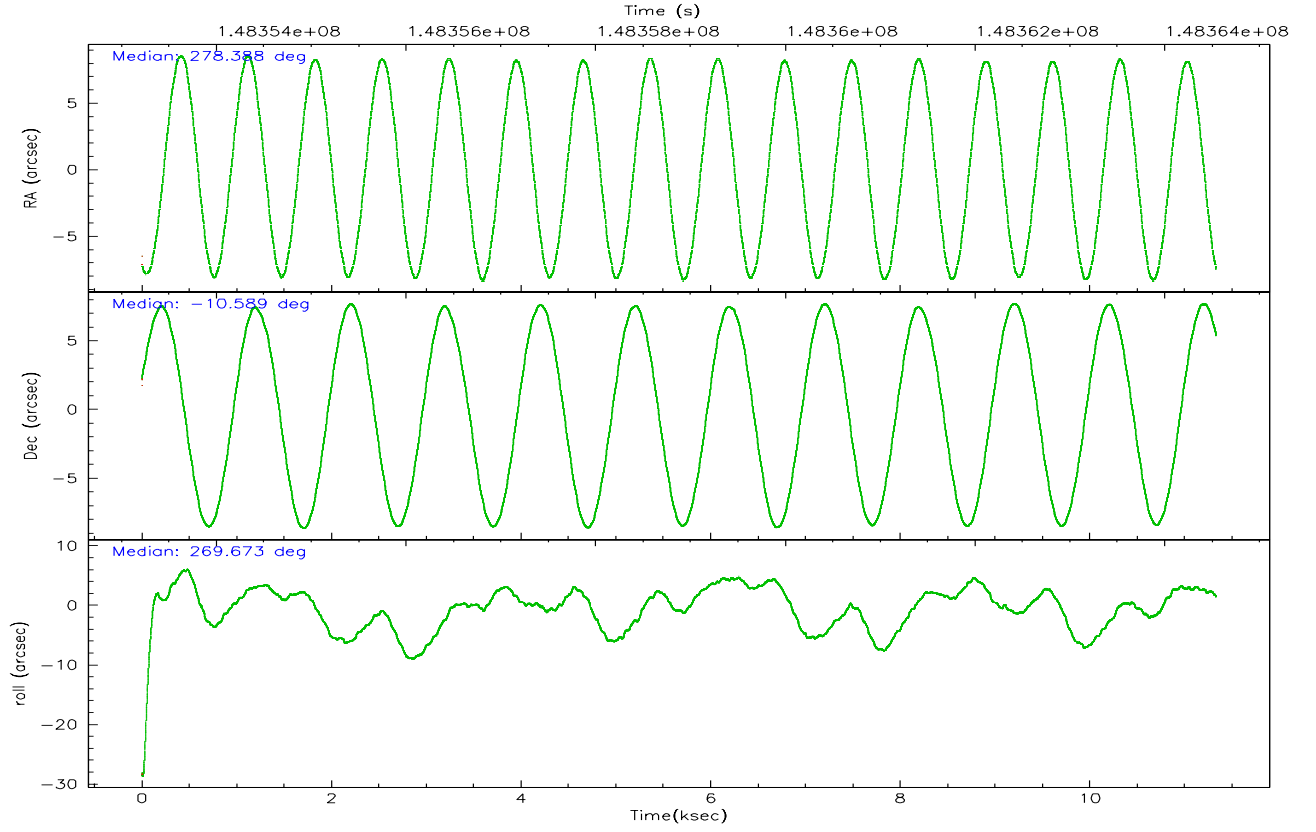
	ccd 2	ccd 3	ccd 5	ccd 6	ccd 7	ccd 8
grade 0 events	3530	3460	3884	3497	9280	6051
	5%	5%	4%	5%	7%	7%
grade 1 events	45	30	85	31	94	54
	0%	0%	0%	0%	0%	0%
grade 2 events	1487	1413	12854	1559	18362	3450
	2%	2%	13%	2%	15%	4%
grade 3 events	715	724	855	797	5455	1779
	1%	1%	0%	1%	4%	2%
grade 4 events	762	702	823	779	5322	1621
	1%	1%	0%	1%	4%	2%
grade 5 events	2479	2658	4287	2707	6020	3611
	3%	4%	4%	4%	5%	4%
grade 6 events	1186	1274	22599	1451	29722	3953
	1%	1%	24%	2%	24%	4%
grade 7 events	53952	53963	46619	52625	45859	58720
	84%	84%	50%	82%	38%	74%

## 2.2 Compared Parameters

Parameter	Planned	Actual	Parameter	Planned	Actual
Instrument	ACIS	ACIS	Obspar format version number	6	6
Detector	ACIS-235678	ACIS-235678	Obspar file type	PREDICTED	ACTUAL
Grating	NONE	NONE	Obspar update status	NONE	UPDATED
Data mode	FAINT	FAINT	Number of optional ACIS chips dropped	0	0
Observation mode	POINTING	POINTING	On-chip summing requested	N	N
Pointing RA	278.373672	278.3877045934771	Subarray requested	NONE	NONE
Pointing Dec	-10.565728	-10.58916559359397	Alternating exposures requested	N	N
Pointing Roll	269.516797	269.675969419805	Primary exposure time	0.000000	3.2
Window start time	147225664.184000	147225664.184000			
Window stop time	149731264.184000	149731264.184000			
SIM focus pos (mm)	-0.684267	-0.6828225247311905			
SIM defocus (mm)	0	0.001444936568705701			
SIM translation stage pos (mm)	-190.132523	-190.1425803651734			
SIM translation stage offset (mm)	0	0.01005778216563158			
Observation start time	148354551.184000	148353021.1509			
Observation start date	2002-09-14T01:34:47	2002-09-14T01:10:21			
Observation end time	148364551.184000	148365262.72641			
Observation end date	2002-09-14T04:21:27	2002-09-14T04:34:22			
Read mode	TIMED	TIMED			

## 2.3 Aspect





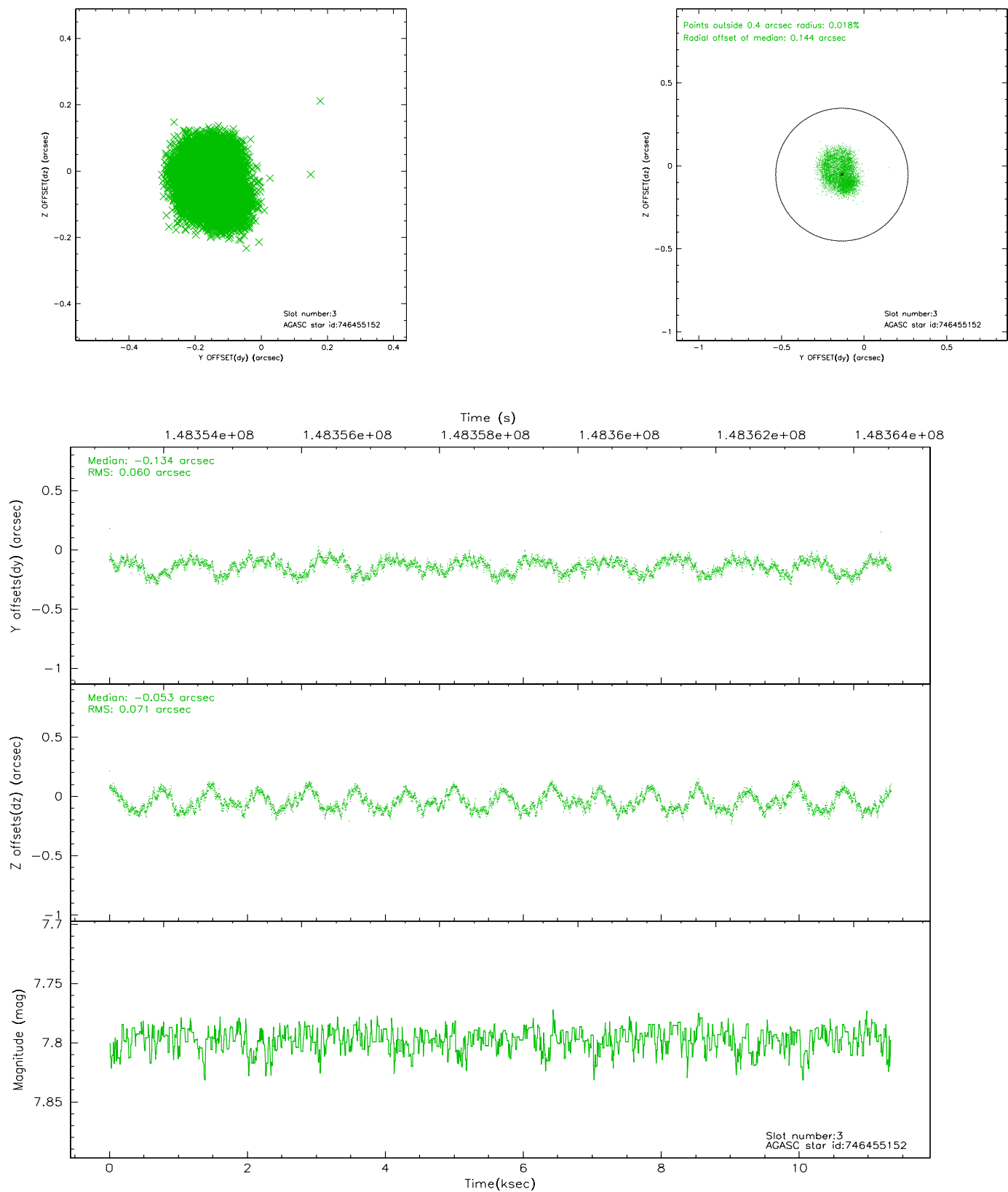
### Slot Statistics

slot	status	id	mag	n_pts	med_dy	med_dz	dr1	dr2	ra	dec	mean_y	mean_z
0	FID	ACIS-S-3	7.35	2765	-0.070	-0.018	0.006	0.011	0.000000	0.000000	57.98	-1856.89
1	FID	ACIS-S-5	7.24	2764	0.080	-0.043	0.006	0.010	0.000000	0.000000	-1808.04	173.67
2	FID	ACIS-S-6	7.35	2765	-0.033	0.070	0.006	0.011	0.000000	0.000000	406.02	818.18
3	GUIDE	746455152	7.80	5529	-0.134	-0.053	0.102	0.150	278.447893	-9.976732	-2122.86	245.40
4	GUIDE	746462392	8.55	5528	0.040	0.053	0.108	0.165	279.038421	-10.890715	1152.53	2360.62
5	GUIDE	746455112	8.93	5528	0.169	-0.211	0.111	0.179	278.266531	-10.703234	498.39	-374.12
6	GUIDE	746460272	8.93	5528	-0.087	0.095	0.119	0.178	278.847488	-10.152127	-1502.13	1666.70
7	GUIDE	746461728	9.74	5523	0.042	0.126	0.348	0.472	278.986921	-10.530755	-142.65	2170.07

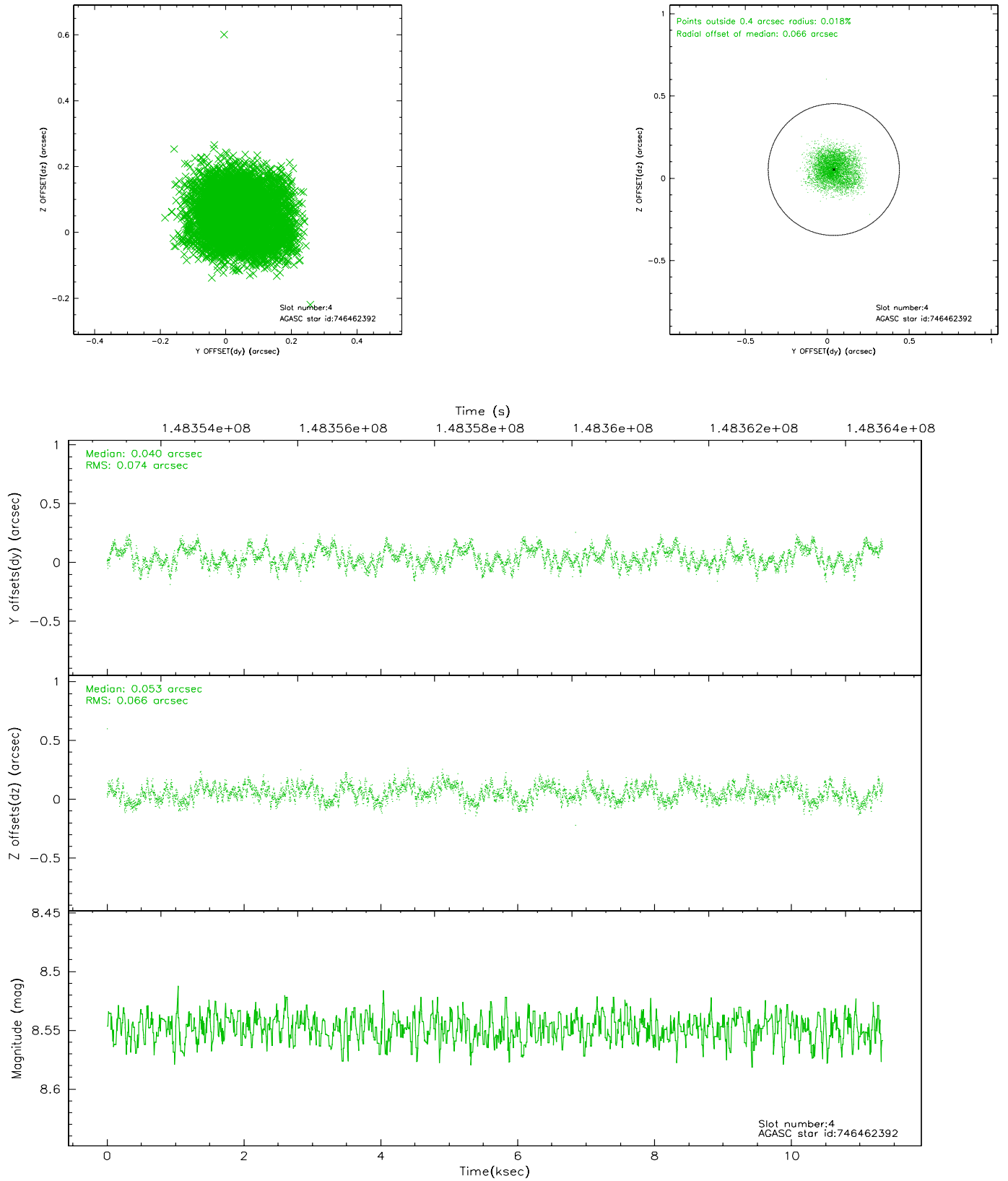


## 2.4 Star Slots

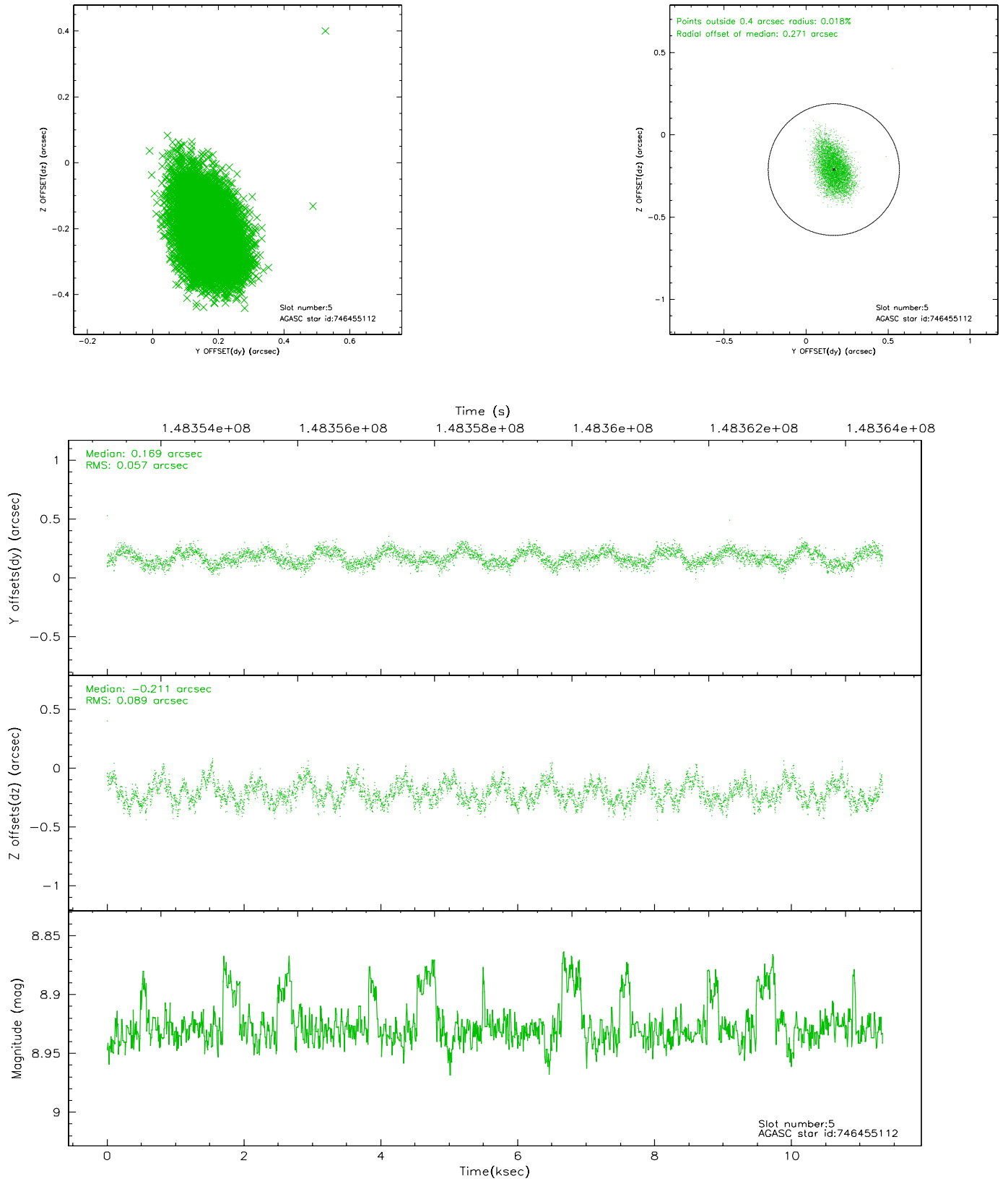
### 2.4.1 Slot 3



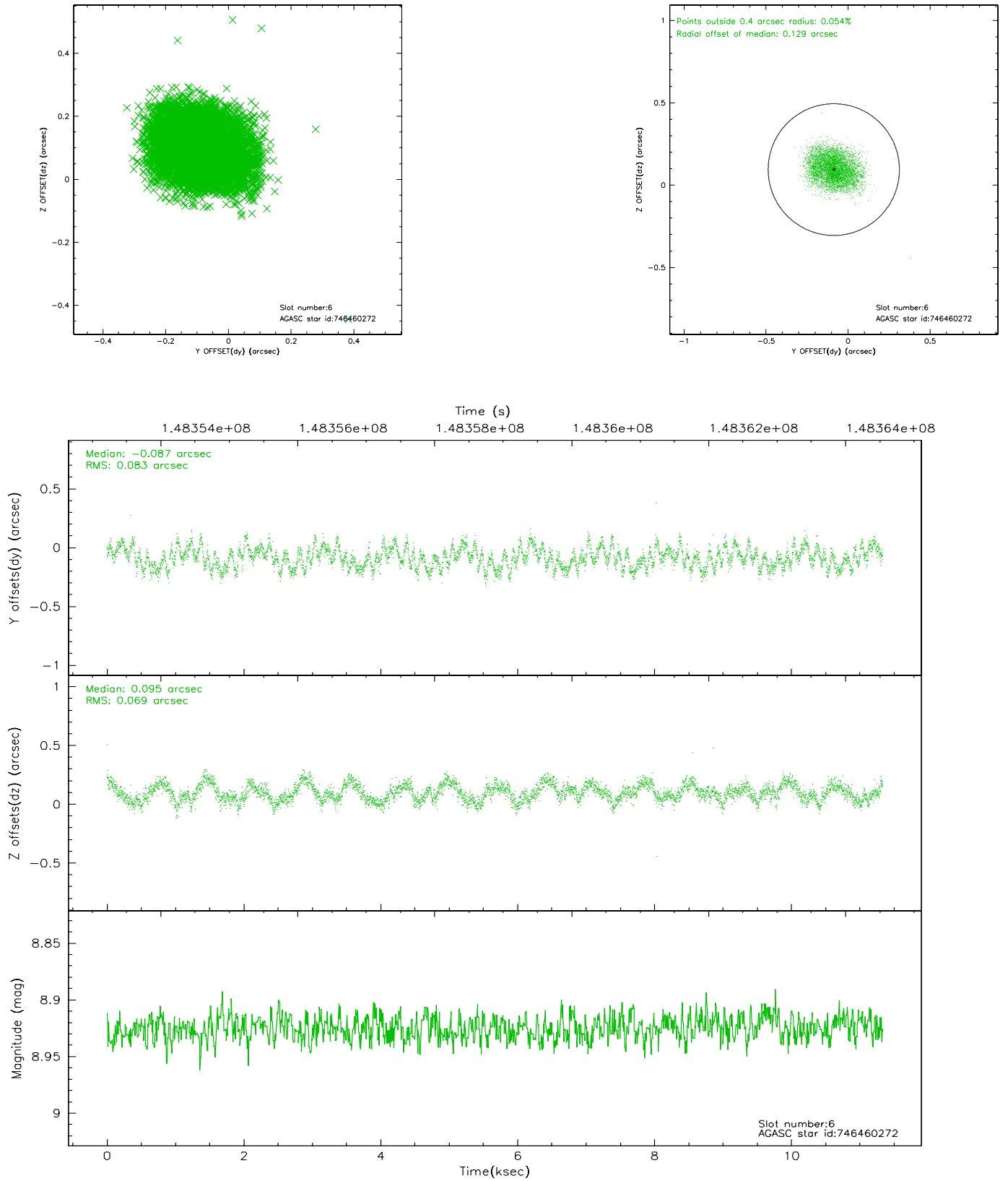
## 2.4.2 Slot 4



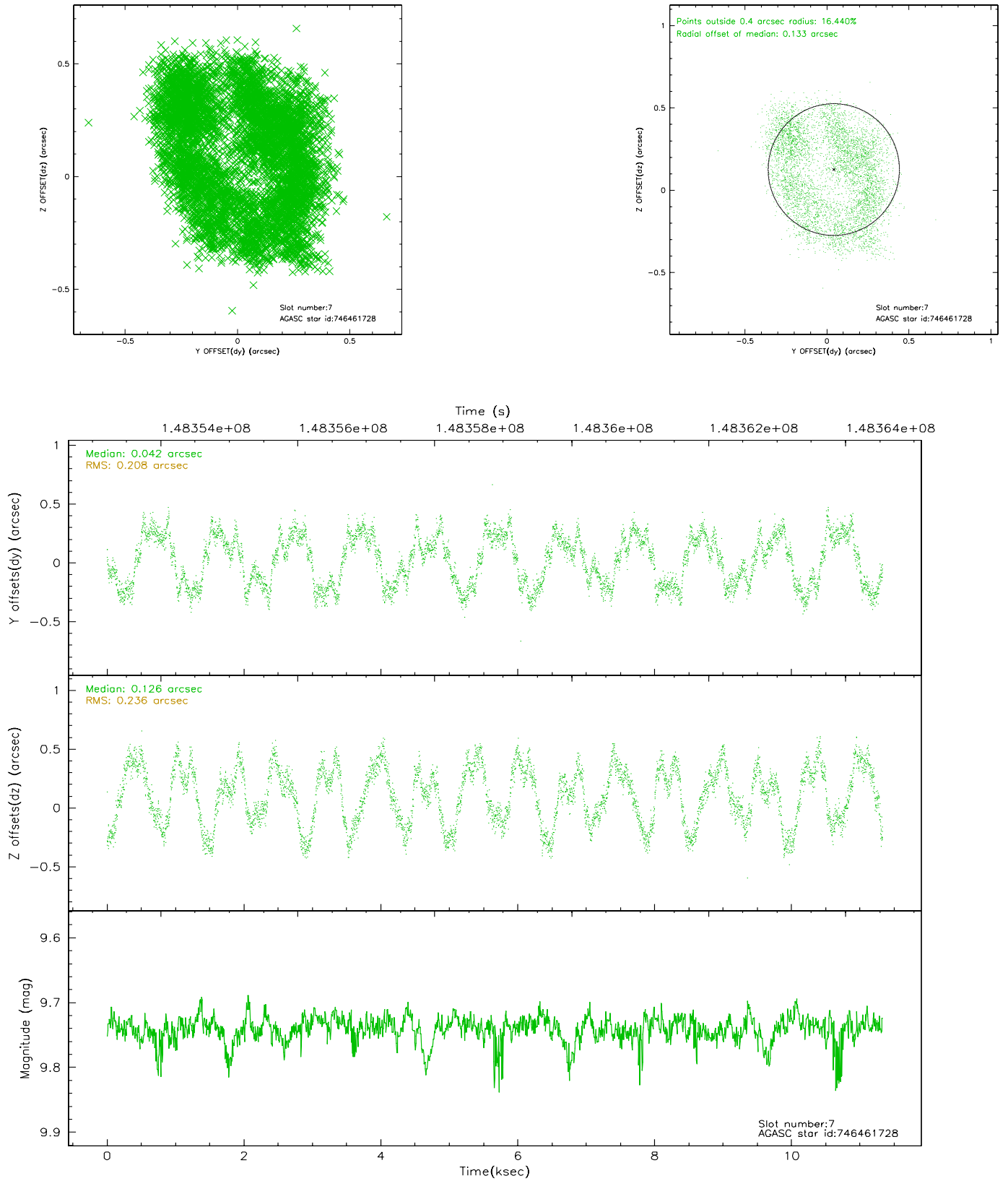
### 2.4.3 Slot 5



## 2.4.4 Slot 6

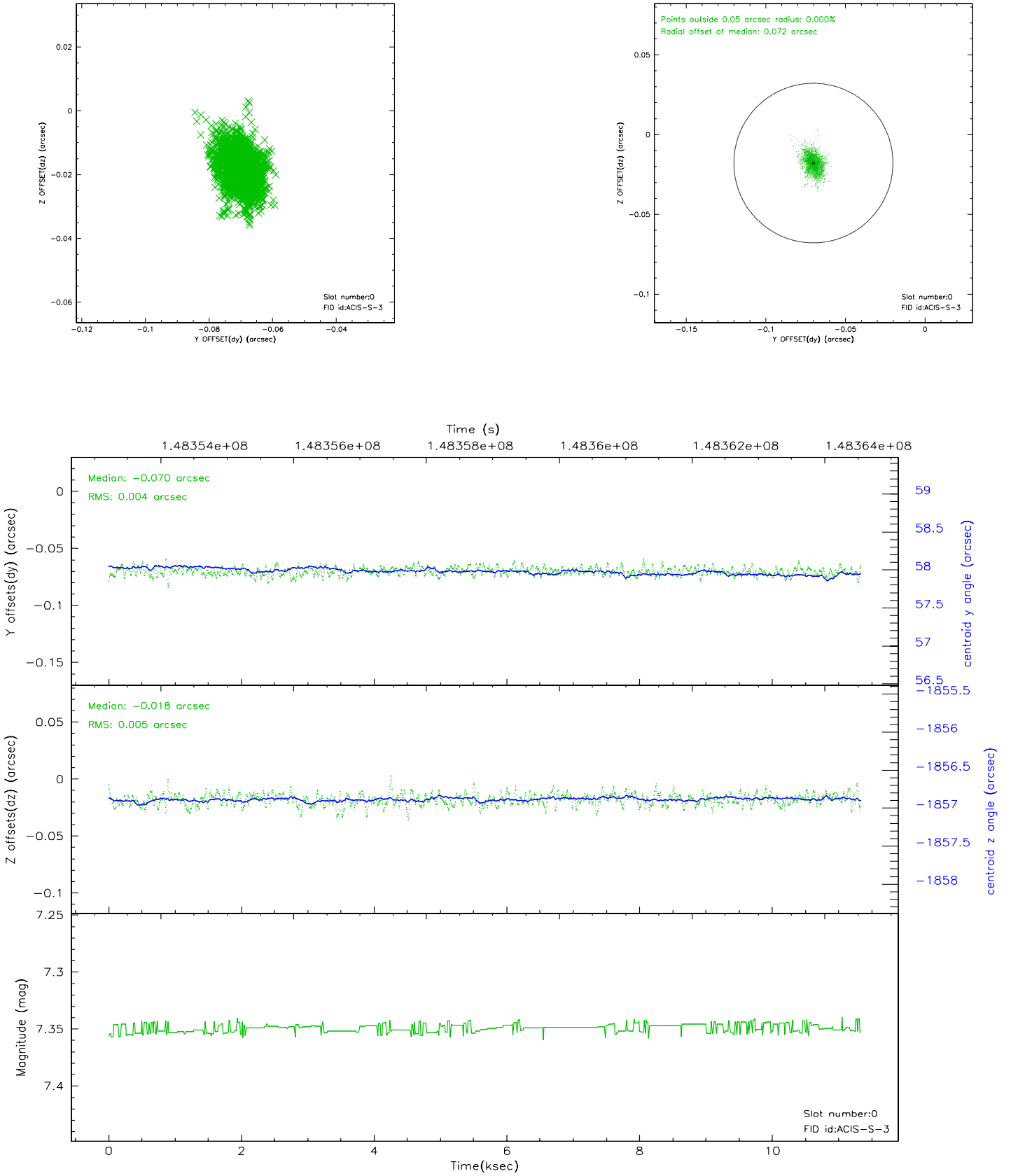


## 2.4.5 Slot 7

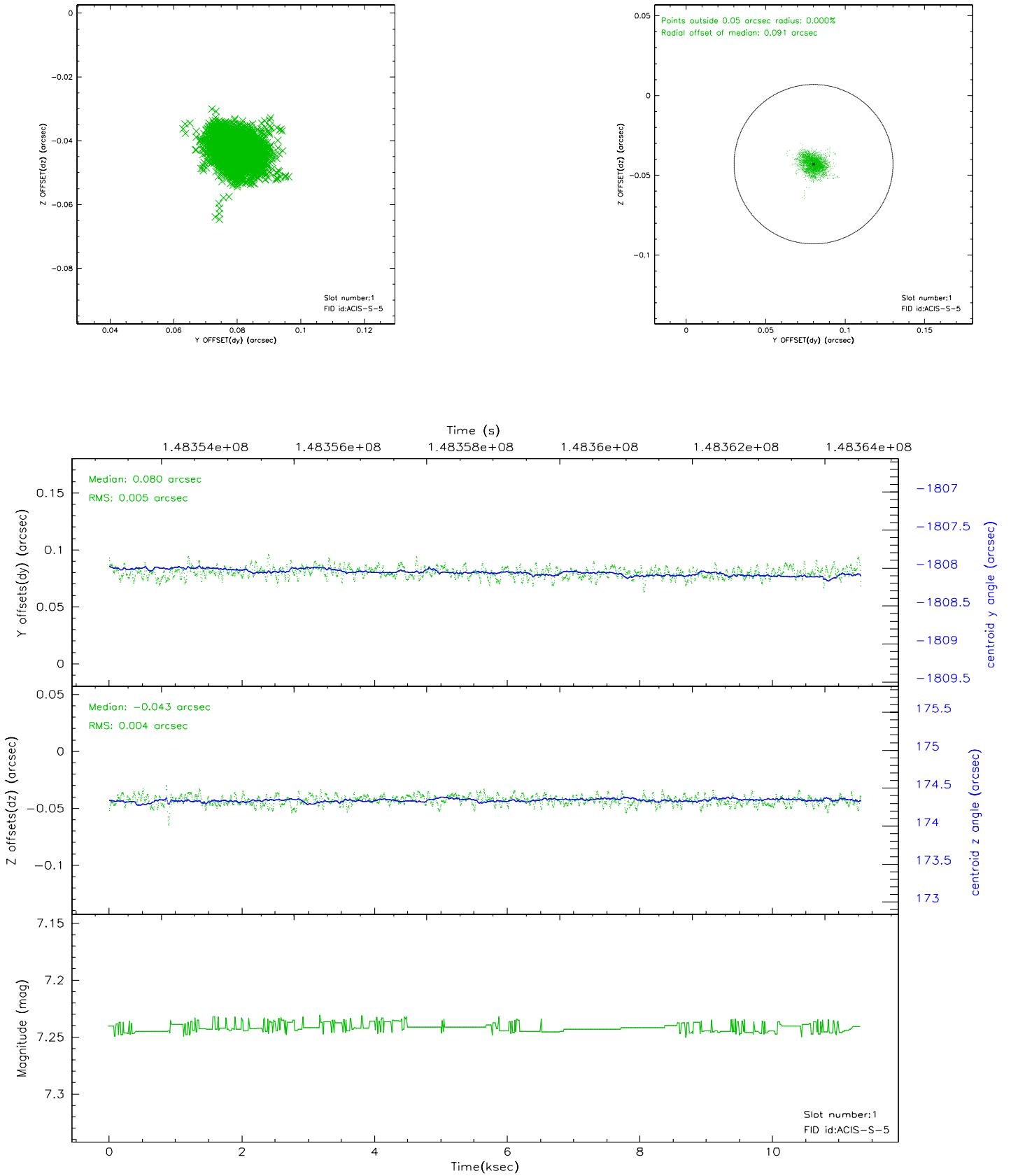


## 2.5 FID Slots

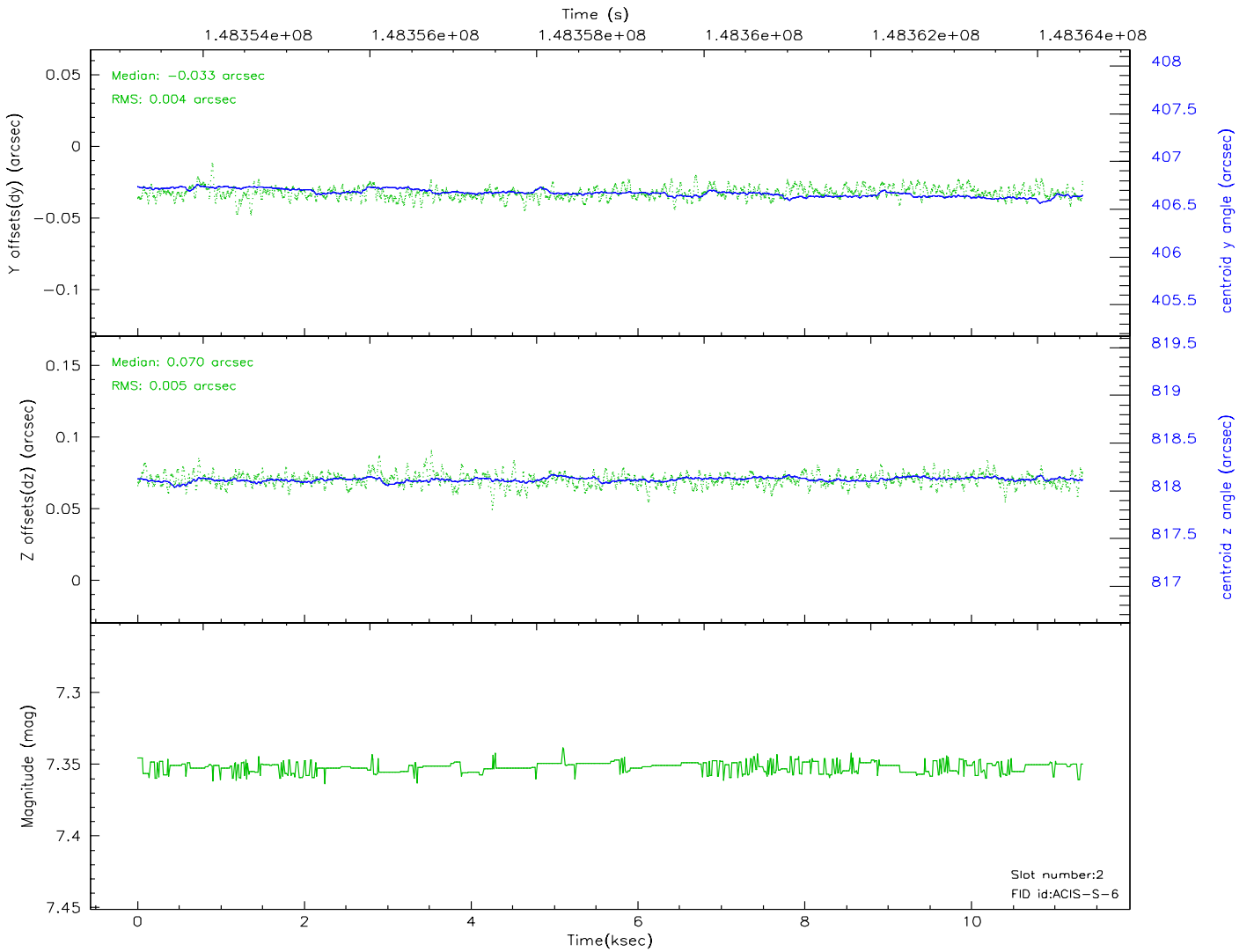
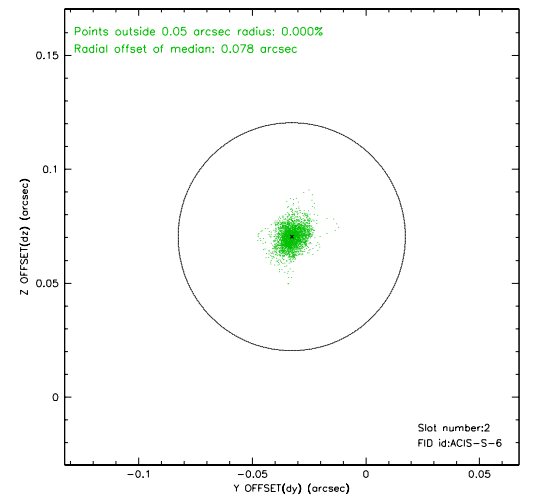
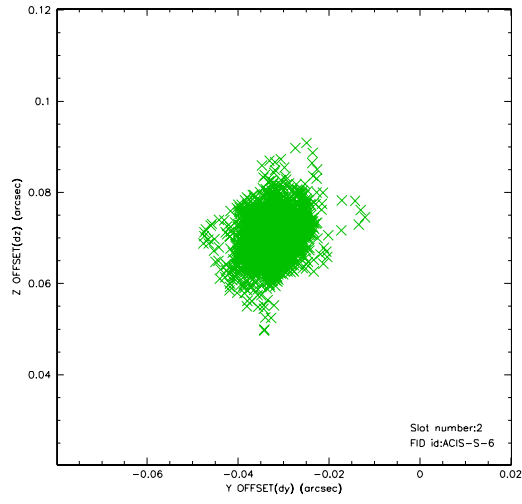
### 2.5.1 Slot 0



## 2.5.2 Slot 1

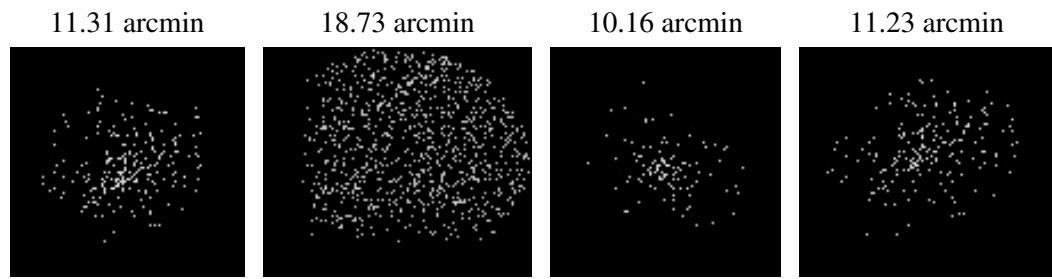


### 2.5.3 Slot 2





### 3 Point Sources



## A Summary

### A.1 Status

V&V Scientist	Jen Lauer
V&V Date (YYYY-MM-DD)	2006.10.04
V&V Edition	1
V&V Disposition and Status	OK
V&V Charge Time	9.961

### A.2 Comments

Window constraint met.