

# V&V Reference Report

## L2 ASCDS Version : 8.4.5

Observation 2813 - L2 Version 3  
Chandra X-Ray Center

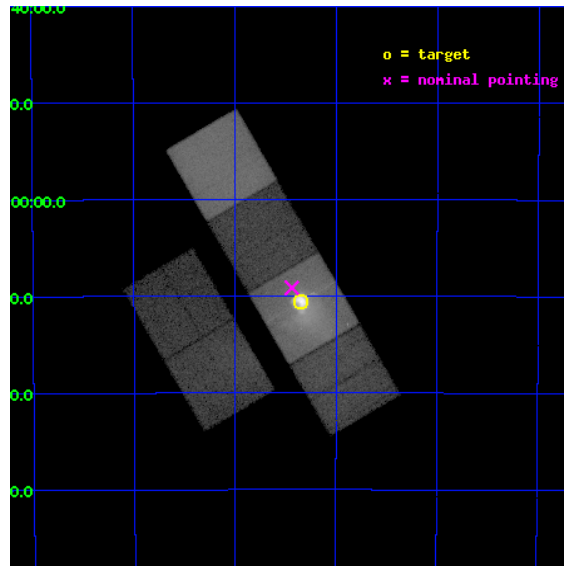
L2 Processing Date : Sep 28 2012

## Contents

<b>1</b>	<b>Front</b>	<b>2</b>
<b>2</b>	<b>OBI</b>	<b>3</b>
2.1	OBI . . . . .	3
2.1.1	Images . . . . .	3
2.1.2	Bias . . . . .	3
2.1.3	Parameters . . . . .	4
2.1.4	Events . . . . .	4
2.2	Compared Parameters . . . . .	5
2.3	Aspect . . . . .	6
2.4	Star Slots . . . . .	9
2.4.1	Slot 3 . . . . .	9
2.4.2	Slot 4 . . . . .	10
2.4.3	Slot 5 . . . . .	11
2.4.4	Slot 6 . . . . .	12
2.4.5	Slot 7 . . . . .	13
2.5	FID Slots . . . . .	14
2.5.1	Slot 0 . . . . .	14
2.5.2	Slot 1 . . . . .	15
2.5.3	Slot 2 . . . . .	16
<b>A</b>	<b>Summary</b>	<b>17</b>
A.1	Status . . . . .	17
A.2	Comments . . . . .	17

# 1 Front

seq_num	500263	Sequence number
obs_id	2813	Observation id
title	THE DYNAMICAL PULSAR-WIND NEBULA IN THE VELA SNR	Proposal title
observer	Dr. George Pavlov	Principal investigator
object	VELA PWN	Source name
dtcycle	0	&#160
cycle	P	events from which exps? Prim/Second/Both
ra_targ	128.83625	Observer's specified target RA [deg]
dec_targ	-45.176667	Observer's specified target Dec [deg]
ra_nom	128.85916409048	Nominal RA [deg]
dec_nom	-45.15246171349	Nominal Dec [deg]
roll_nom	59.74577359362	Nominal Roll [deg]
revision	3	Processing version of data
ontime	18163.200016901	Sum of GTIs [s]
livetime	17933.206641721	Livetime [s]
ontime2	18159.959056646	Sum of GTIs [s]
ontime3	18163.200016901	Sum of GTIs [s]
ontime5	18163.200016901	Sum of GTIs [s]
ontime6	18163.200016901	Sum of GTIs [s]
ontime7	18163.200016901	Sum of GTIs [s]
ontime8	18163.200016901	Sum of GTIs [s]
l2events	600876	Number of level 2 events

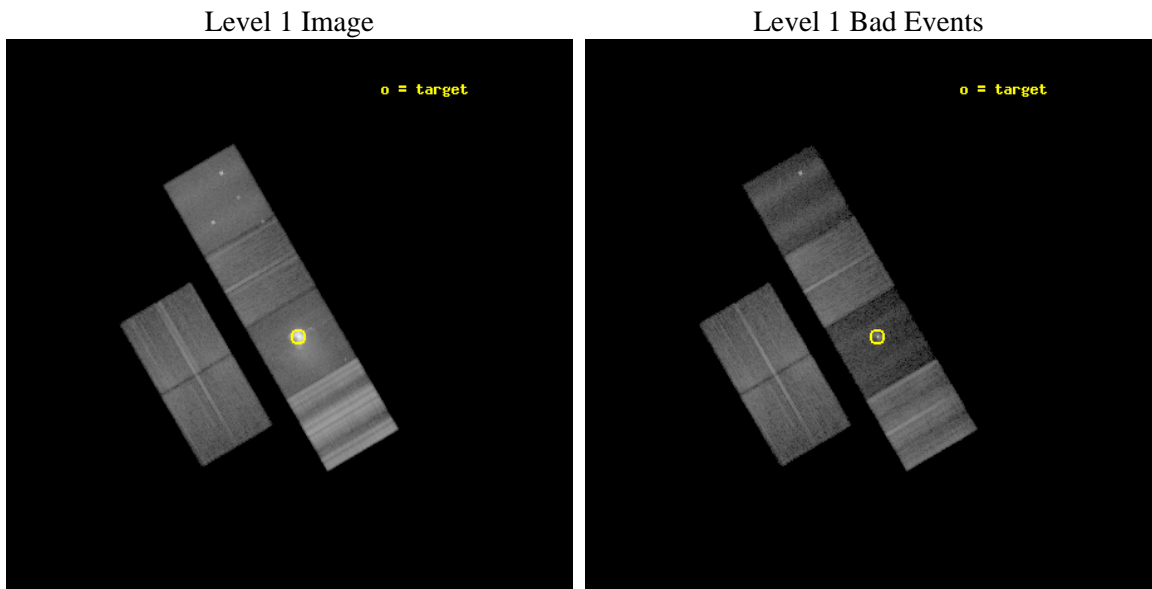




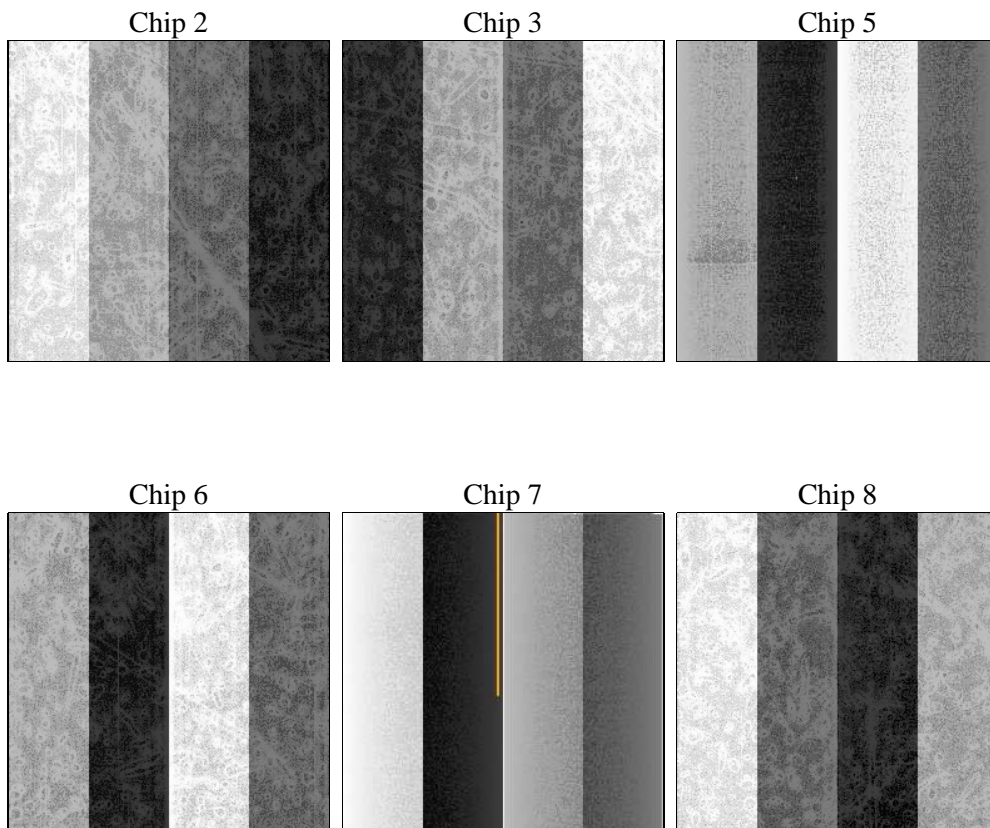
## 2 OBI

### 2.1 OBI

#### 2.1.1 Images



#### 2.1.2 Bias



### 2.1.3 Parameters

obi_num	1	Obi number	sched_exp_time	18000.000000	[s] Scheduled observation exposure time
ascdsver	8.4.5	Processing system revision	ontime	18163.200016901	Sum of GTIs [s]
caldsver	4.5.2	&#160	ontime2	18159.959056646	Sum of GTIs [s]
date	2012-09-28T04:47:08	Date and time of file creation	ontime3	18163.200016901	Sum of GTIs [s]
revision	3	Processing version of data	ontime5	18163.200016901	Sum of GTIs [s]
			ontime6	18163.200016901	Sum of GTIs [s]
			ontime7	18163.200016901	Sum of GTIs [s]
			ontime8	18163.200016901	Sum of GTIs [s]
			l1events	1783817	Number of level 1 events

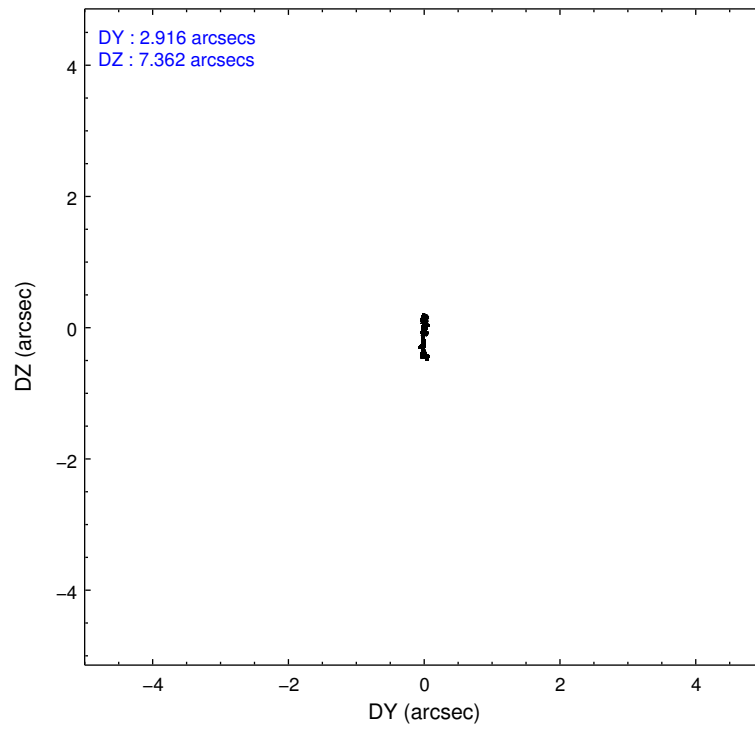
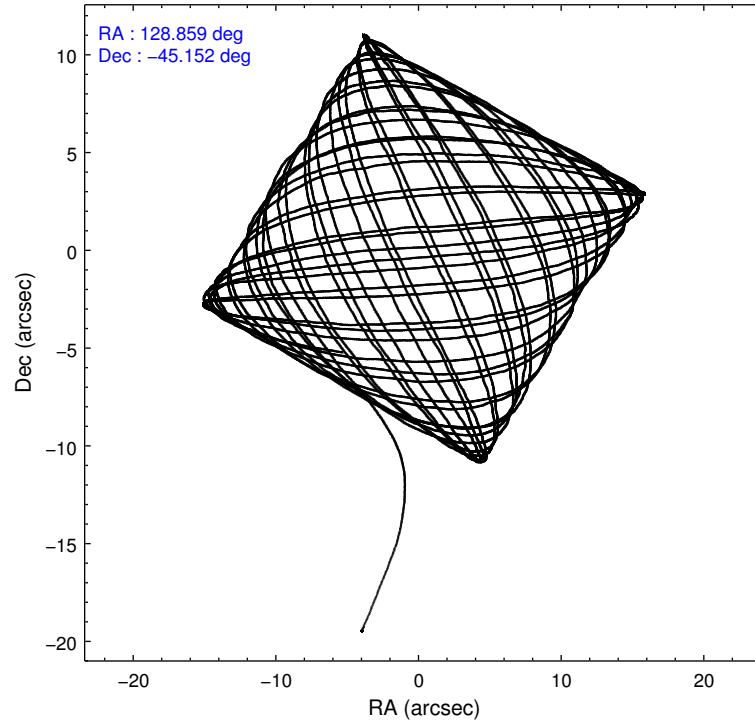
### 2.1.4 Events

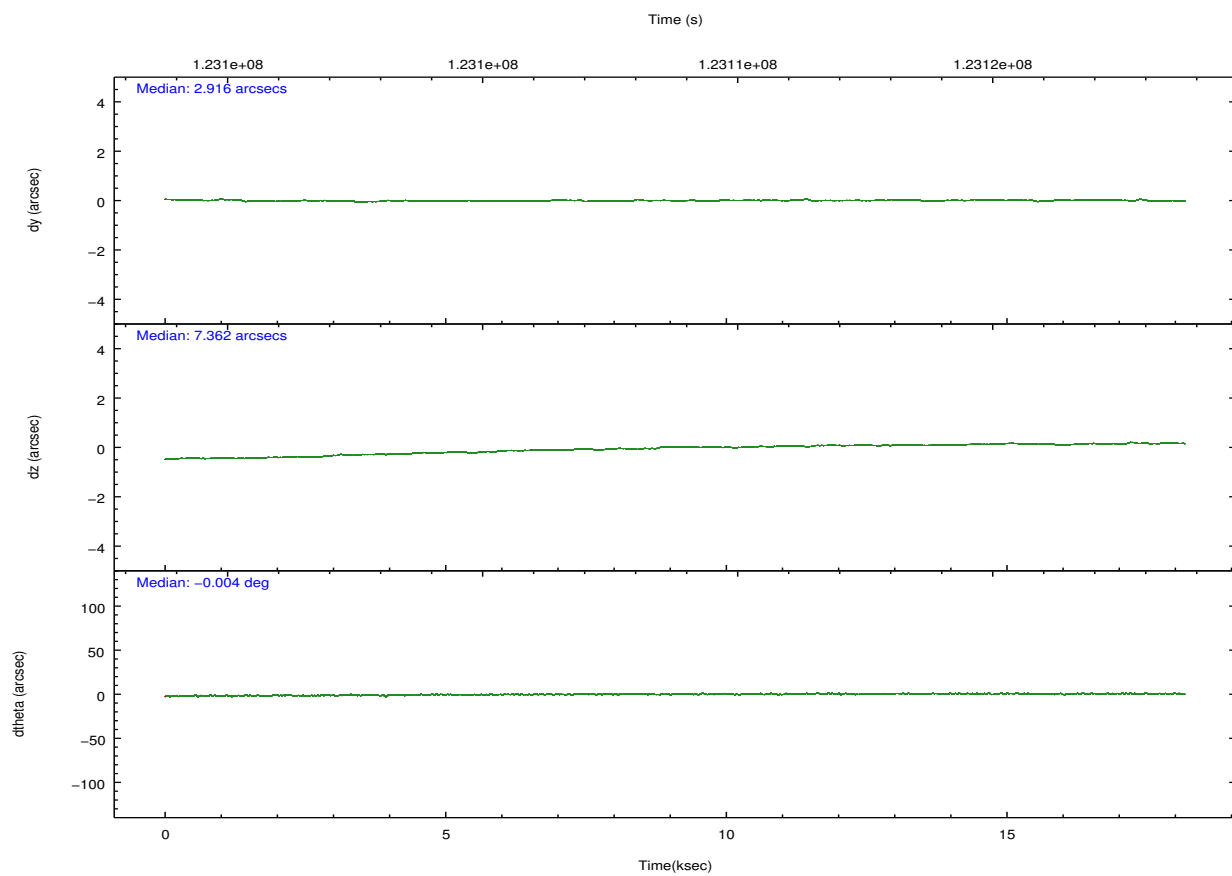
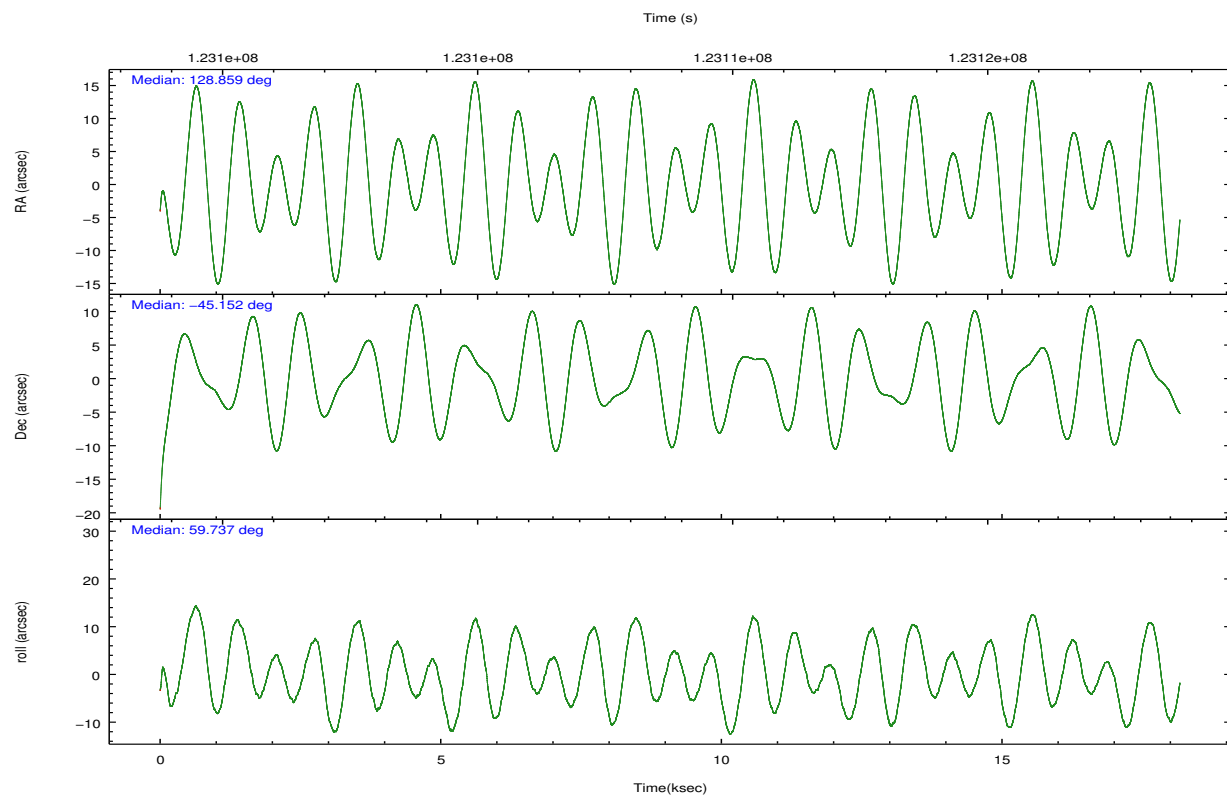
	ccd 2	ccd 3	ccd 5	ccd 6	ccd 7	ccd 8		ccd 2	ccd 3	ccd 5	ccd 6	ccd 7	ccd 8
level 1 events	201088	177117	220574	200986	401115	582937	grade 0 events	22996	22663	58802	27961	105451	132921
rejected events	162856	145015	71243	159986	57780	188847		11%	12%	26%	13%	26%	22%
rejected %	80%	81%	32%	79%	14%	32%	grade 1 events	155	138	322	144	839	954
								0%	0%	0%	0%	0%	0%
							grade 2 events	9408	4763	38818	8119	88732	50332
								4%	2%	17%	4%	22%	8%
							grade 3 events	1196	1412	10099	1474	38423	71041
								0%	0%	4%	0%	9%	12%
							grade 4 events	2281	1429	9994	1467	38090	61495
								1%	0%	4%	0%	9%	10%
							grade 5 events	2415	2510	10609	2559	11998	9075
								1%	1%	4%	1%	2%	1%
							grade 6 events	2675	2129	32886	2330	75516	82511
								1%	1%	14%	1%	18%	14%
							grade 7 events	159962	142073	59044	156932	42066	174608
								79%	80%	26%	78%	10%	29%

## 2.2 Compared Parameters

Parameter	Planned	Actual	Parameter	Planned	Actual
Instrument	ACIS	ACIS	Obspar format version number	7	7
Detector	ACIS-235678	ACIS-235678	Obspar file type	PREDICTED	ACTUAL
Grating	NONE	NONE	Obspar update status	NONE	UPDATED
Data mode	FAINT	FAINT	Number of optional ACIS chips dropped	0	0
Observation mode	POINTING	POINTING	On-chip summing requested	N	N
[deg] Pointing RA	128.859490	128.8591640904836	Subarray requested	NONE	NONE
[deg] Pointing Dec	-45.179717	-45.15246171349041	Alternating exposures requested	N	N
[deg] Pointing Roll	59.589376	59.74577359362021	[s] Primary exposure time	0.000000	3.2
[mm] SIM focus pos	-0.684267	-0.6828225247311905			
[mm] SIM defocus	0	0.001444936568705701			
[mm] SIM translation stage pos	-190.132523	-190.1400660498719			
[mm] SIM translation stage offset	0	0.00754346686406393			
[s] Observation start time (MET)	123099859.184000	123098710.86138			
Observation start date	2001-11-25T18:23:15	2001-11-25T18:05:10			
[s] Observation end time (MET)	123117859.184000	123119381.52471			
Observation end date	2001-11-25T23:23:15	2001-11-25T23:49:41			
Read mode	TIMED	TIMED			

## 2.3 Aspect



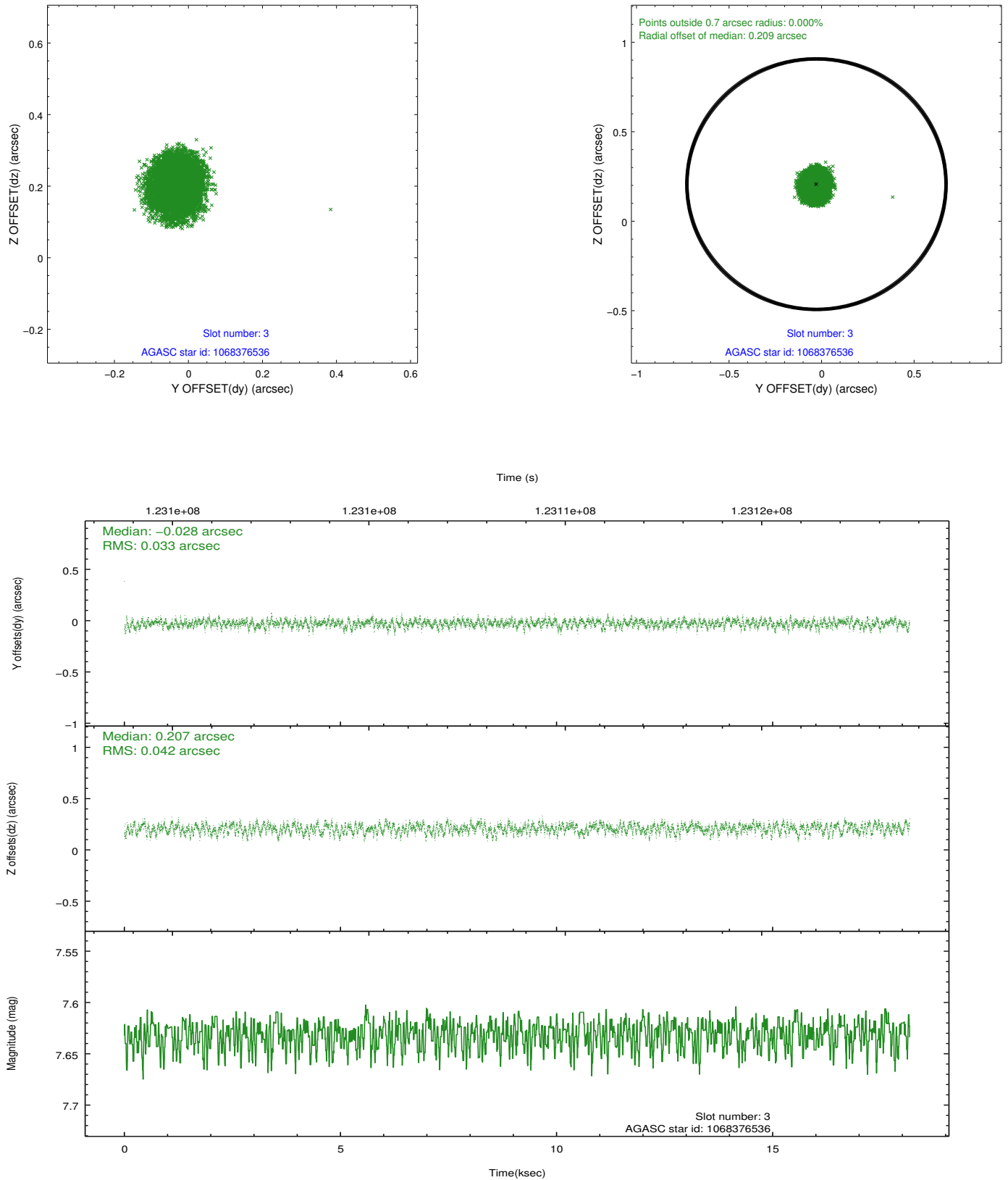


### Slot Statistics

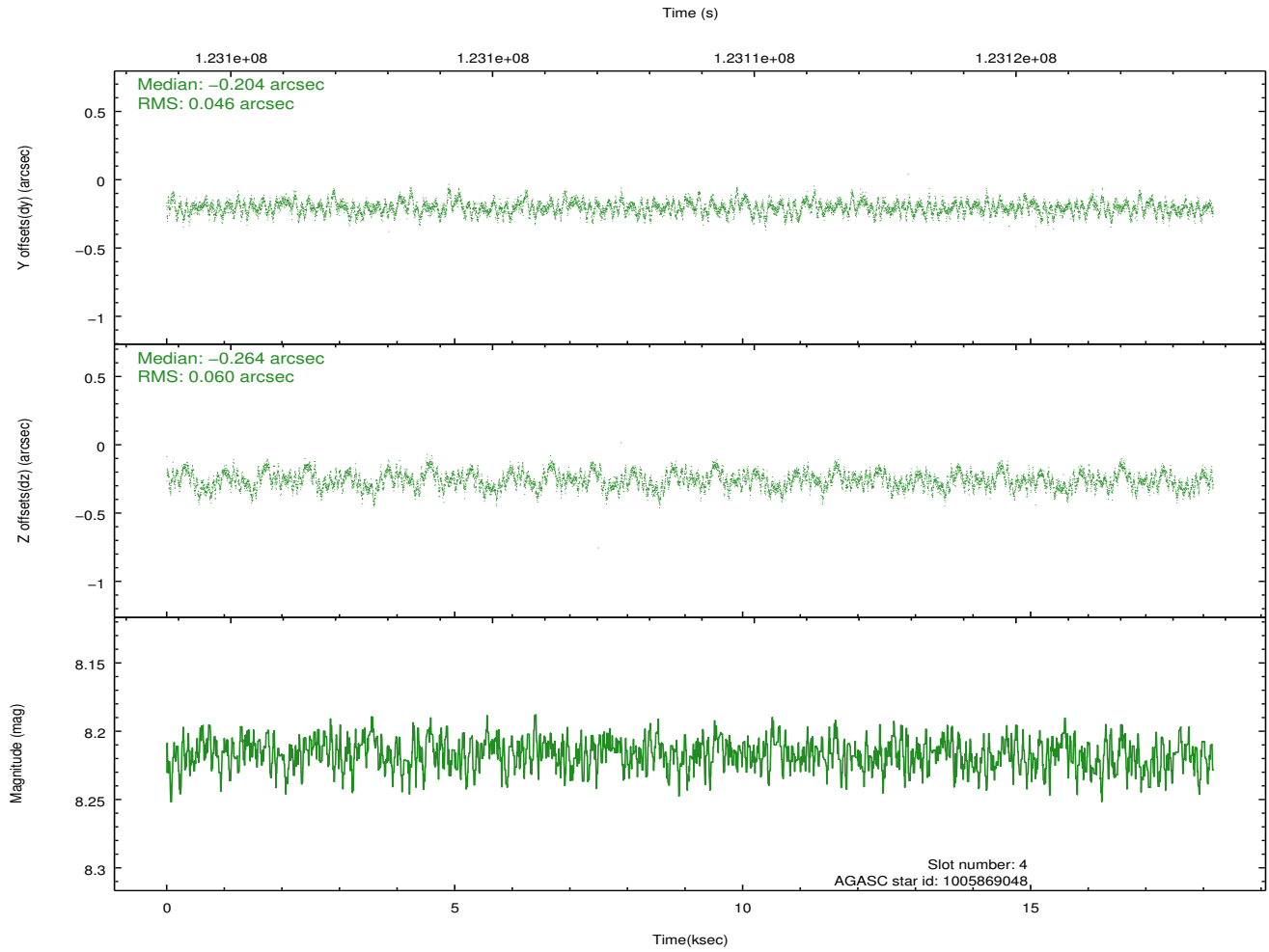
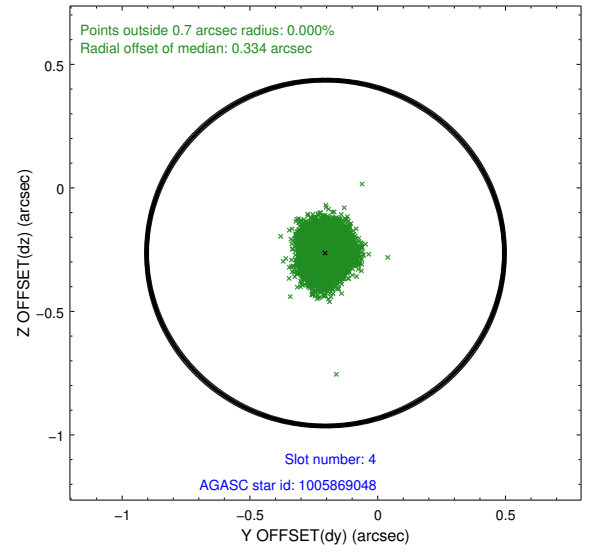
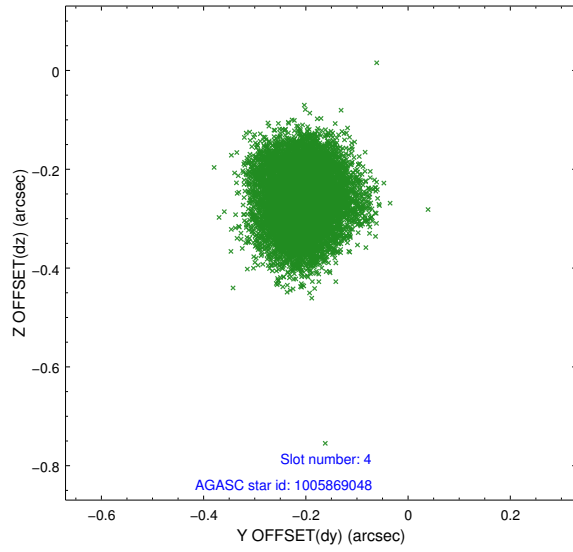
slot	status	id	mag	n_pts	med_dy	med_dz	dr1	dr2	ra	dec	mean_y	mean_z
0	FID	ACIS-S-2	7.11	4432	-0.005	0.008	0.009	0.015	0.000000	0.000000	-755.56	-1728.45
1	FID	ACIS-S-4	7.20	4431	-0.041	0.000	0.006	0.010	0.000000	0.000000	2157.58	179.79
2	FID	ACIS-S-5	7.23	4431	0.015	0.001	0.009	0.014	0.000000	0.000000	-1808.09	173.72
3	GUIDE	1068376536	7.63	8863	-0.028	0.207	0.057	0.090	129.556408	-45.593502	-402.30	-2271.56
4	GUIDE	1005869048	8.22	8863	-0.204	-0.264	0.081	0.127	128.429058	-44.495949	1560.28	2197.77
5	GUIDE	1068239704	8.57	8857	0.050	0.089	0.070	0.112	129.331182	-45.207211	517.55	-1083.05
6	GUIDE	1005872888	8.42	8861	-0.019	-0.111	0.068	0.107	128.718363	-44.887099	725.86	843.58
7	GUIDE	1068238552	9.30	8799	0.200	0.074	0.107	0.170	128.941120	-45.368483	-481.34	-521.84

## 2.4 Star Slots

### 2.4.1 Slot 3

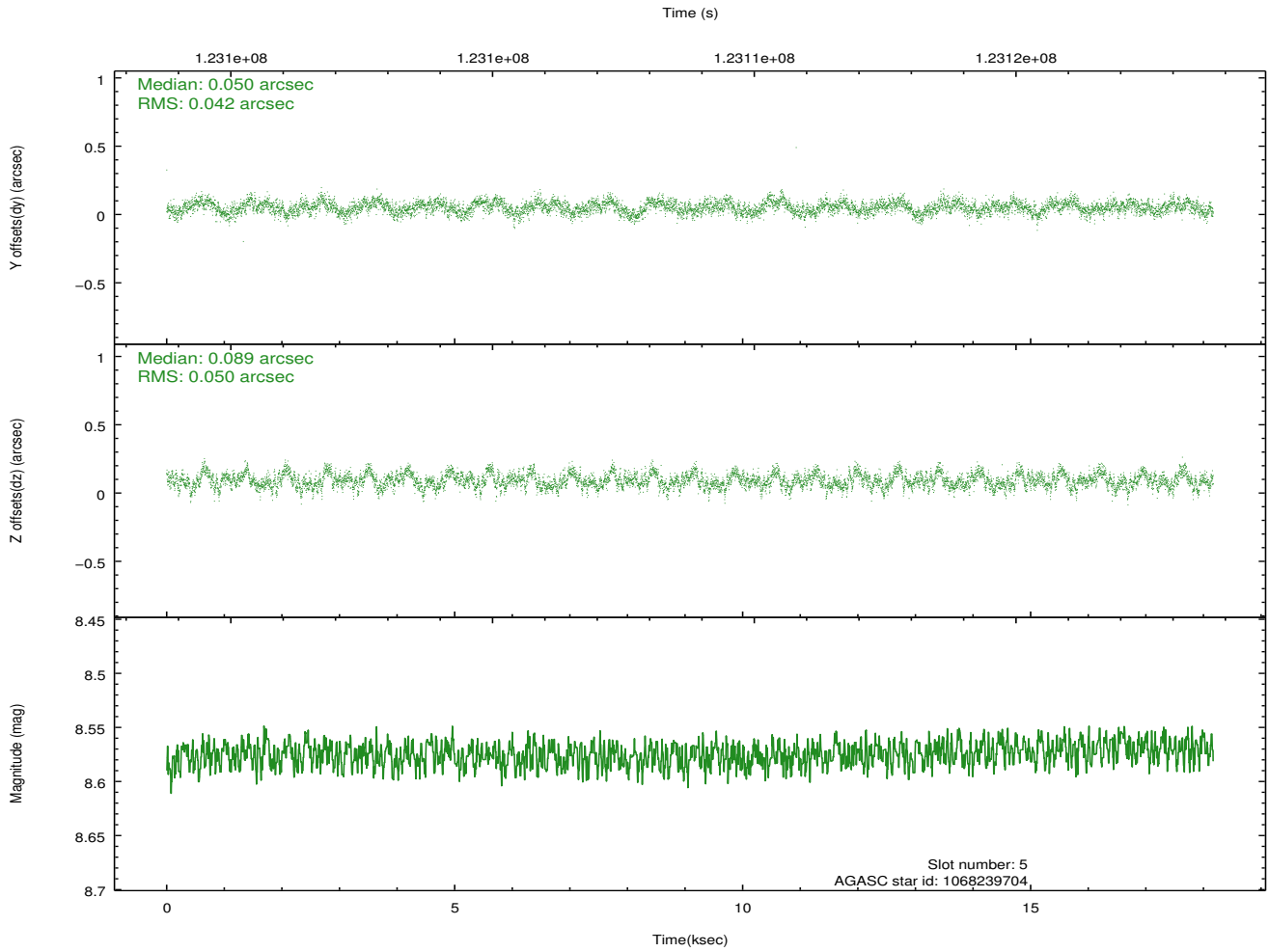
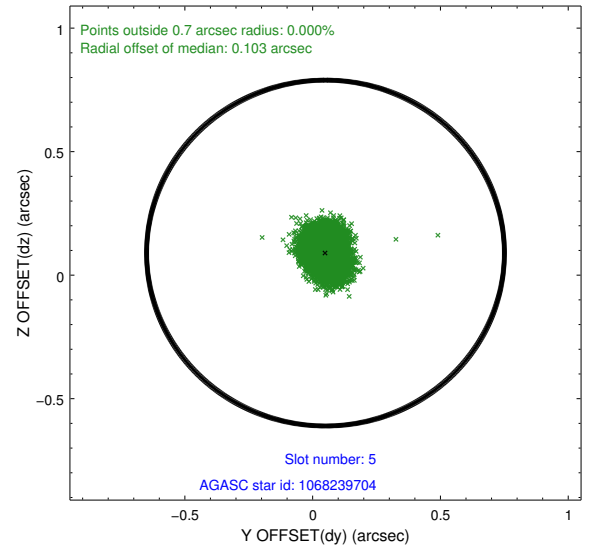
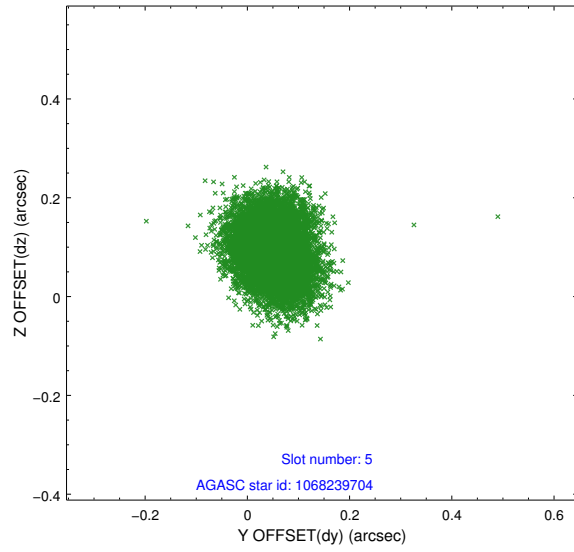


## 2.4.2 Slot 4

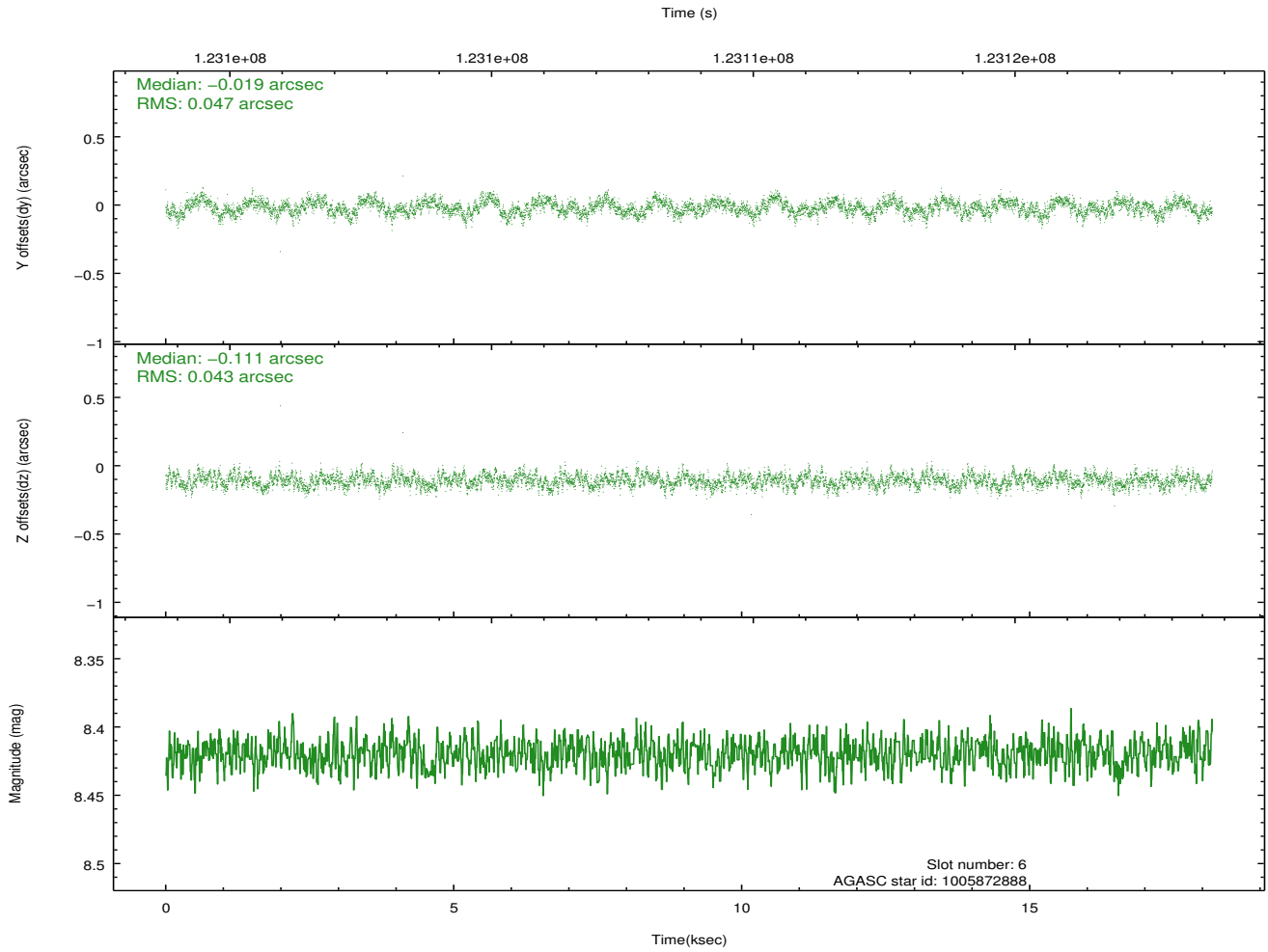
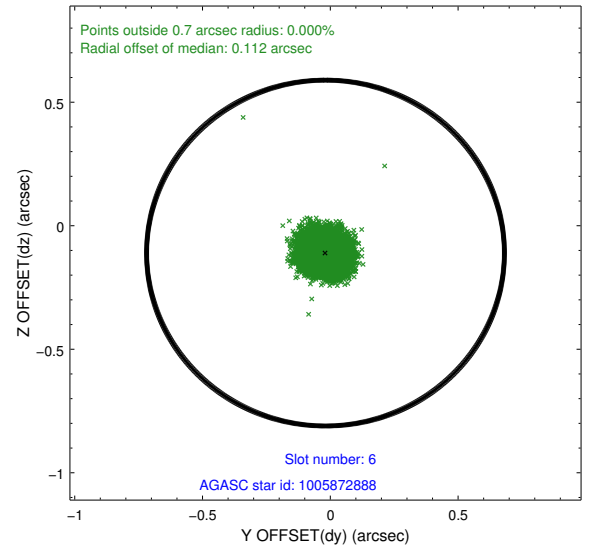
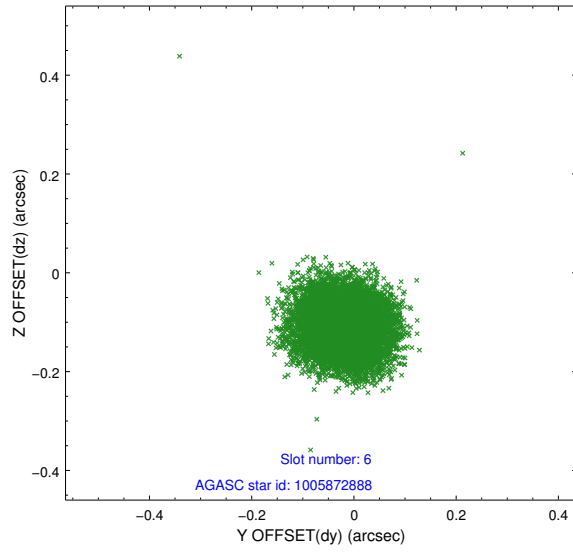




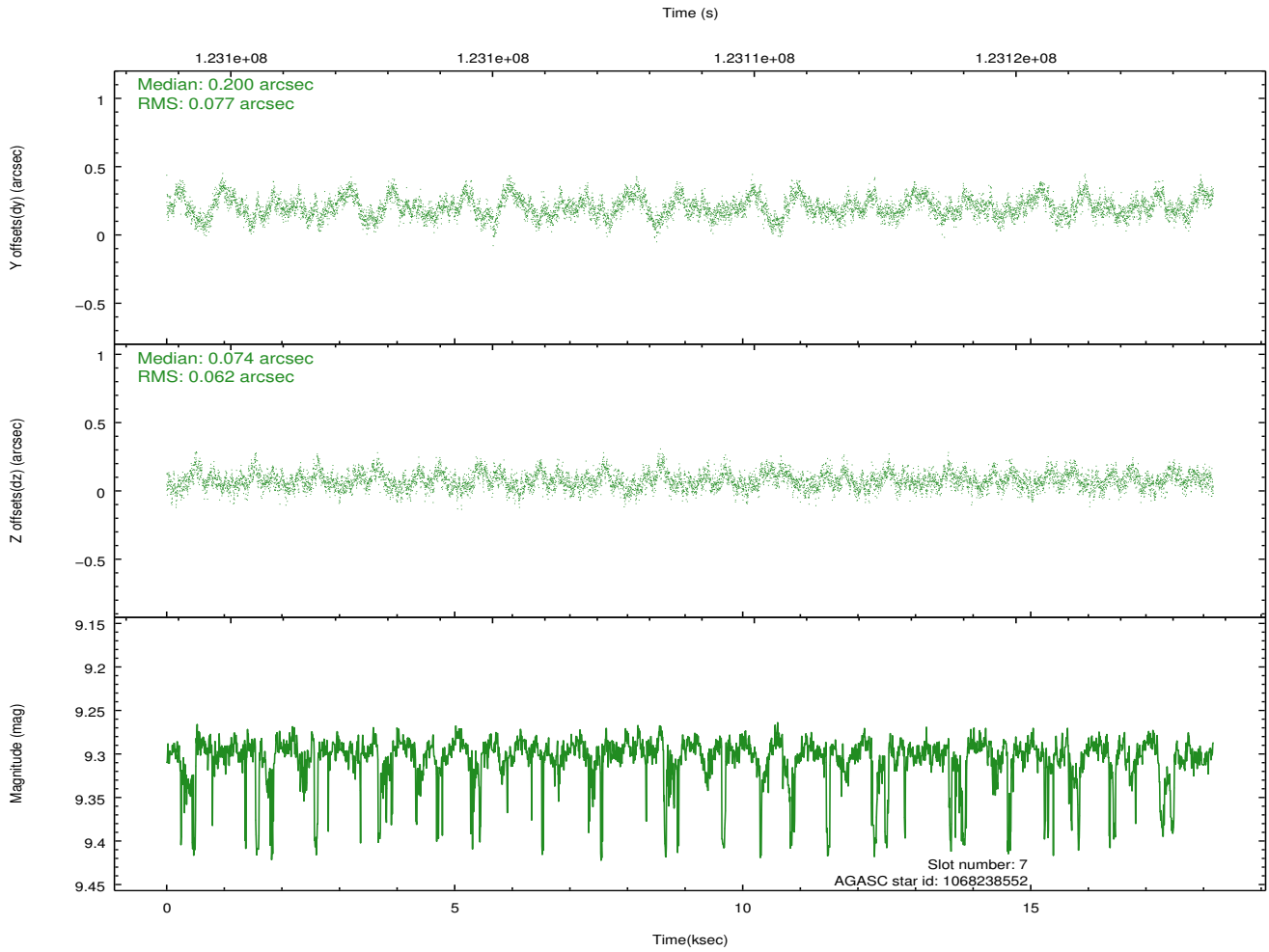
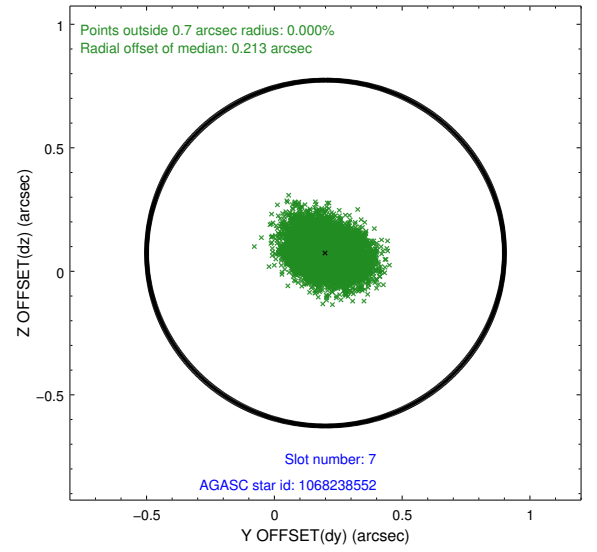
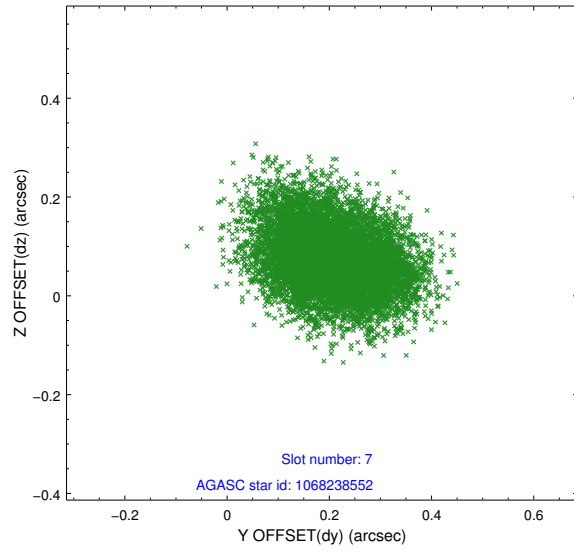
### 2.4.3 Slot 5



## 2.4.4 Slot 6

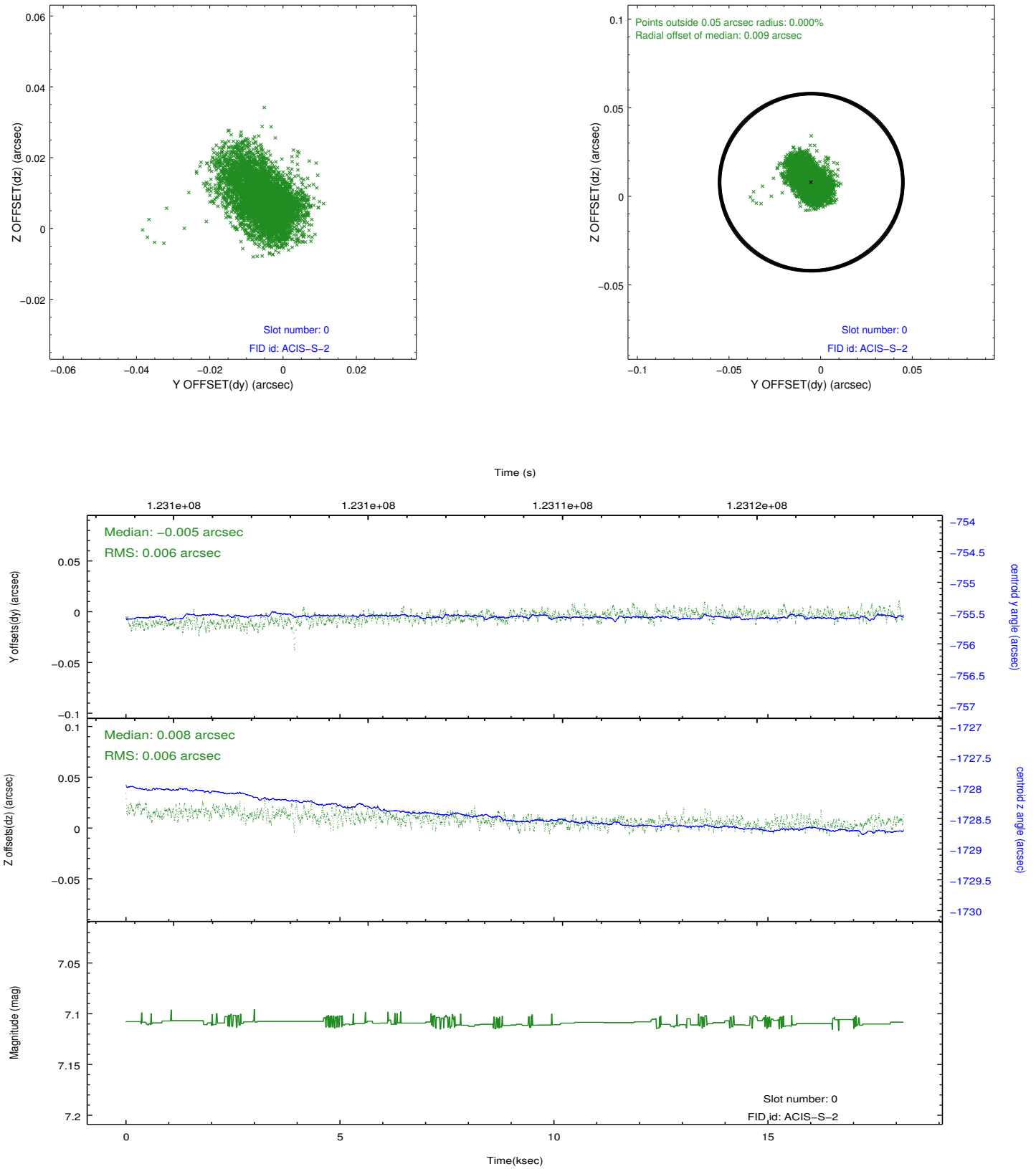


## 2.4.5 Slot 7

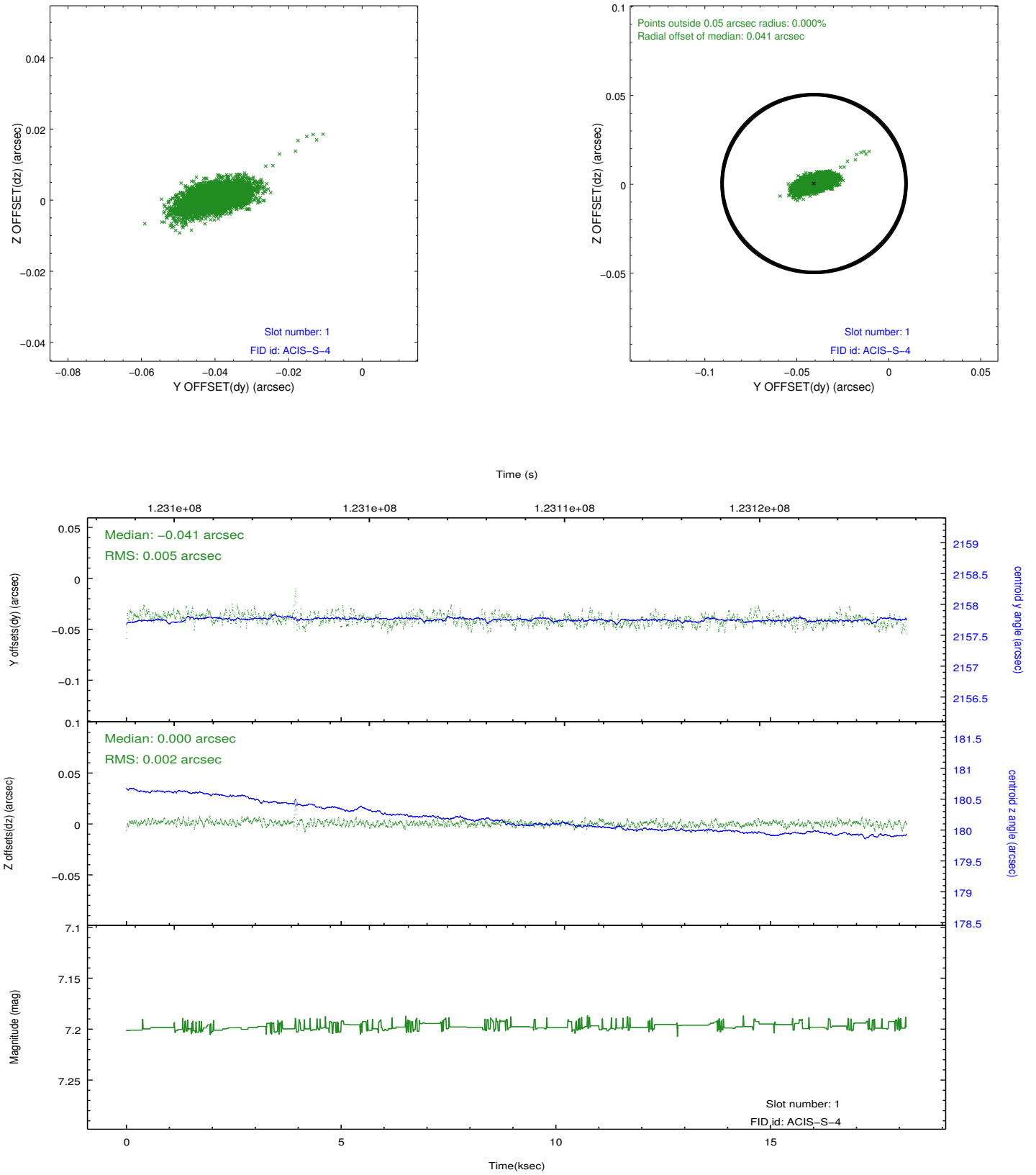


## 2.5 FID Slots

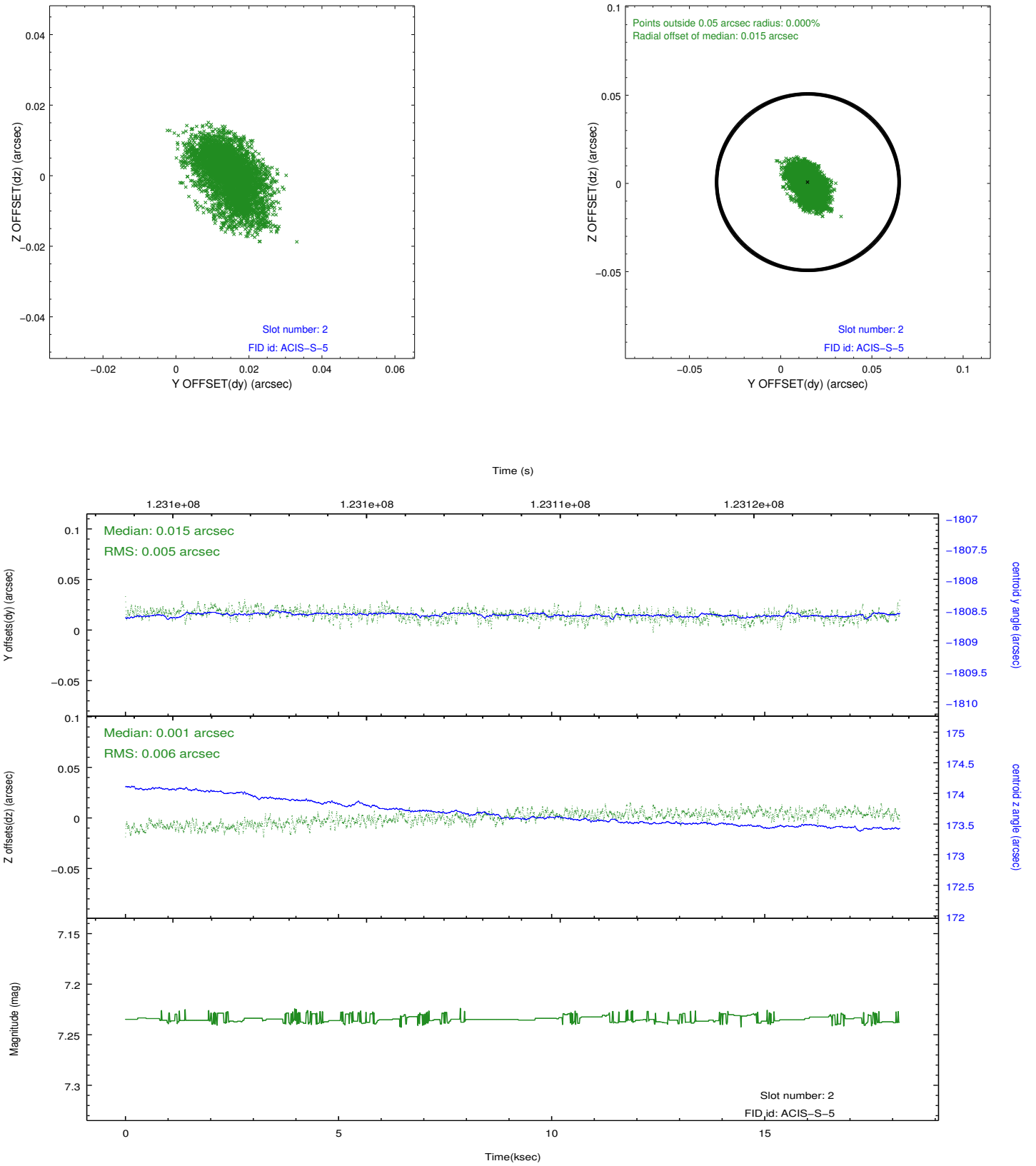
### 2.5.1 Slot 0



## 2.5.2 Slot 1



### 2.5.3 Slot 2



## A Summary

### A.1 Status

V&V Scientist	Beth Sundheim
V&V Date (YYYY-MM-DD)	2012.09.28
V&V Edition	1
V&V Disposition and Status	OK
V&V Charge Time	18.163

### A.2 Comments