

V&V Reference Report

L2 ASCDS Version : 8.4.5

Observation 2573 - L2 Version 5
Chandra X-Ray Center

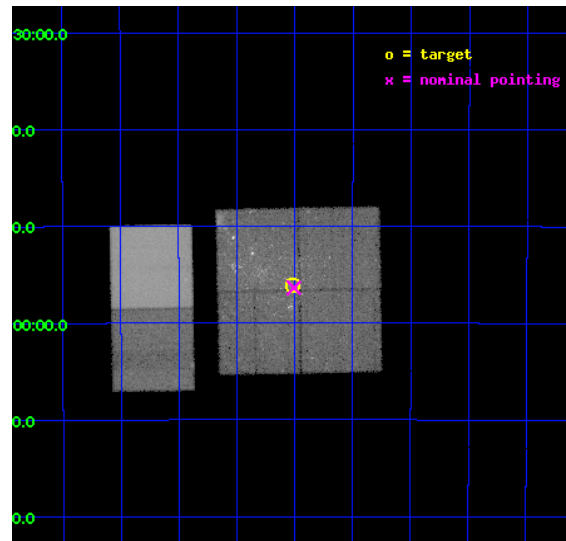
L2 Processing Date : Nov 21 2012

Contents

1	Front	2
2	OBI	3
2.1	OBI	3
2.1.1	Images	3
2.1.2	Bias	3
2.1.3	Parameters	4
2.1.4	Events	4
2.2	Compared Parameters	5
2.3	Aspect	6
2.4	Star Slots	9
2.4.1	Slot 3	9
2.4.2	Slot 4	10
2.4.3	Slot 5	11
2.4.4	Slot 6	12
2.4.5	Slot 7	13
2.5	FID Slots	14
2.5.1	Slot 0	14
2.5.2	Slot 1	15
A	Summary	16
A.1	Status	16
A.2	Comments	16

1 Front

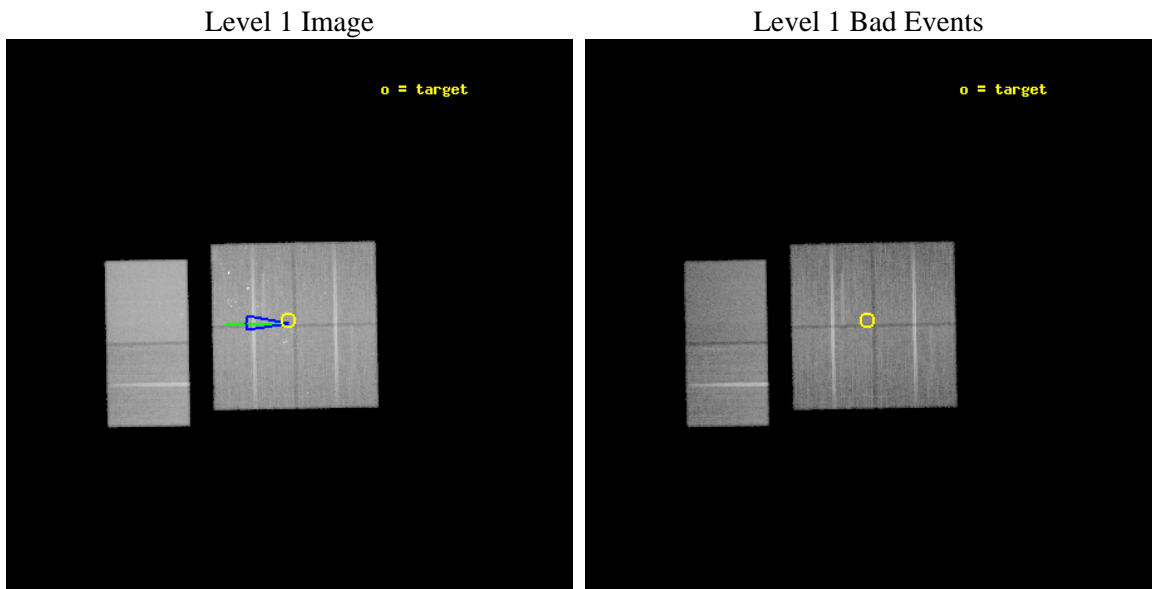
seq_num	200181	Sequence number
obs_id	2573	Observation id
title	TRACING THE CHRONICLE OF MASSIVE YOUNG STARS IN A GIANT MOLECULAR CLOUD NGC 6334	Proposal title
observer	Dr Yuichiro Ezoe	Principal investigator
object	NGC 6334 REGION 2	Source name
dtcycle	0	
cycle	P	events from which exps? Prim/Second/Both
ra_targ	260.004167	Observer's specified target RA [deg]
dec_targ	-35.935278	Observer's specified target Dec [deg]
ra_nom	260.00182340912	Nominal RA [deg]
dec_nom	-35.939516180943	Nominal Dec [deg]
roll_nom	268.958505765	Nominal Roll [deg]
revision	5	Processing version of data
ontime	40051.158860594	Sum of GTIs [s]
livetime	39544.006971189	Livetime [s]
ontime0	40051.076023608	Sum of GTIs [s]
ontime1	40054.358053774	Sum of GTIs [s]
ontime2	40051.158103615	Sum of GTIs [s]
ontime3	40051.158860594	Sum of GTIs [s]
ontime6	40054.399850786	Sum of GTIs [s]
ontime7	40054.399850786	Sum of GTIs [s]
l2events	425302	Number of level 2 events



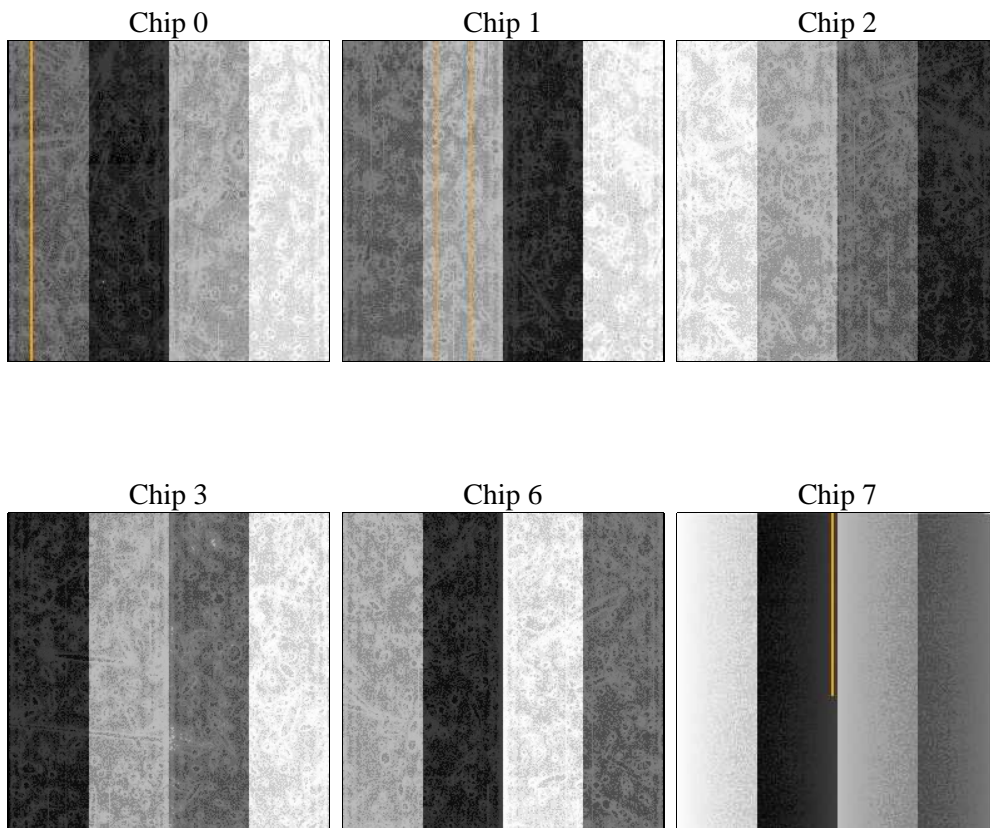
2 OBI

2.1 OBI

2.1.1 Images



2.1.2 Bias



2.1.3 Parameters

obi_num	1	Obi number	sched_exp_time	40091.498000	[s] Scheduled observation exposure time
ascdsver	8.4.5	Processing system revision	ontime	40051.158860594	Sum of GTIs [s]
caldsver	4.5.2	 	ontime0	40051.076023608	Sum of GTIs [s]
date	2012-11-21T23:42:04	Date and time of file creation	ontime1	40054.358053774	Sum of GTIs [s]
revision	5	Processing version of data	ontime2	40051.158103615	Sum of GTIs [s]
			ontime3	40051.158860594	Sum of GTIs [s]
			ontime6	40054.399850786	Sum of GTIs [s]
			ontime7	40054.399850786	Sum of GTIs [s]
			l1events	1687643	Number of level 1 events

2.1.4 Events

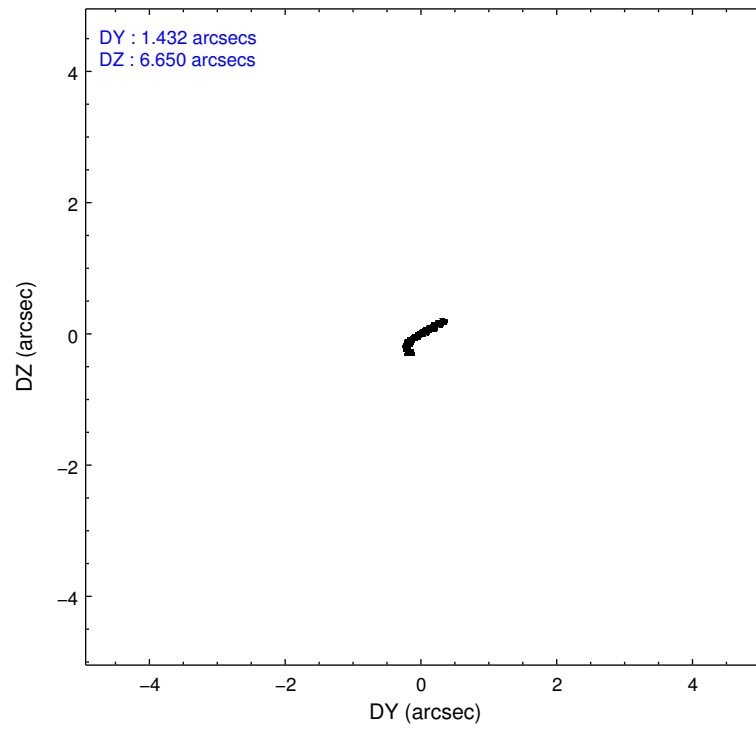
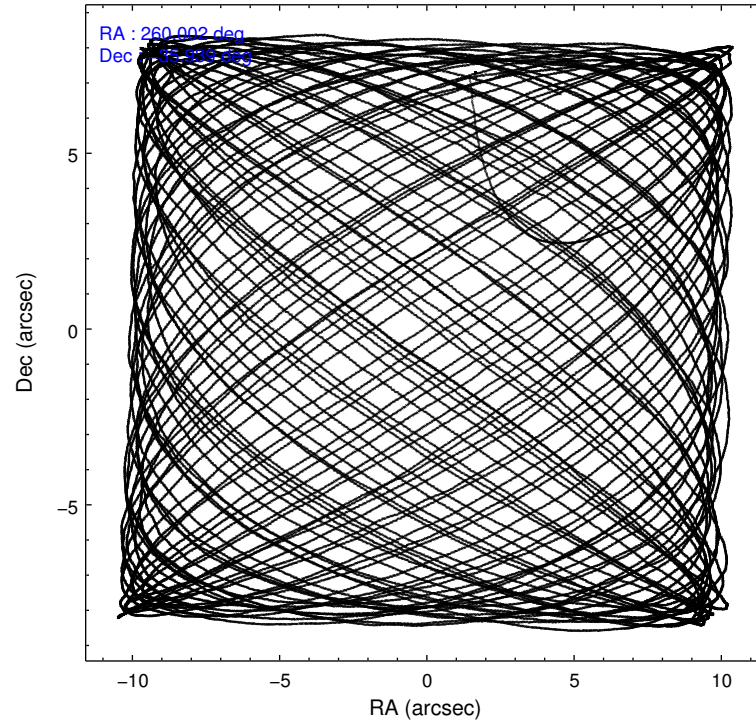
	ccd 0	ccd 1	ccd 2	ccd 3	ccd 6	ccd 7		ccd 0	ccd 1	ccd 2	ccd 3	ccd 6	ccd 7
level 1 events	234533	241686	262533	276326	274078	398487	grade 0 events	24368	25500	28426	38297	26474	20875
rejected events	190447	194409	214687	214696	226683	191799		10%	10%	10%	13%	9%	5%
rejected %	81%	80%	81%	77%	82%	48%	grade 1 events	163	161	214	270	152	312
								0%	0%	0%	0%	0%	0%
							grade 2 events	7595	8335	7510	9077	7822	38401
								3%	3%	2%	3%	2%	9%
							grade 3 events	3384	3541	3359	4045	3346	17331
								1%	1%	1%	1%	1%	4%
							grade 4 events	3180	3508	3322	3971	3329	17219
								1%	1%	1%	1%	1%	4%
							grade 5 events	9446	10021	9333	10588	11036	31122
								4%	4%	3%	3%	4%	7%
							grade 6 events	5586	6420	5249	6264	6449	112965
								2%	2%	1%	2%	2%	28%
							grade 7 events	180811	184200	205120	203814	215470	160262
								77%	76%	78%	73%	78%	40%

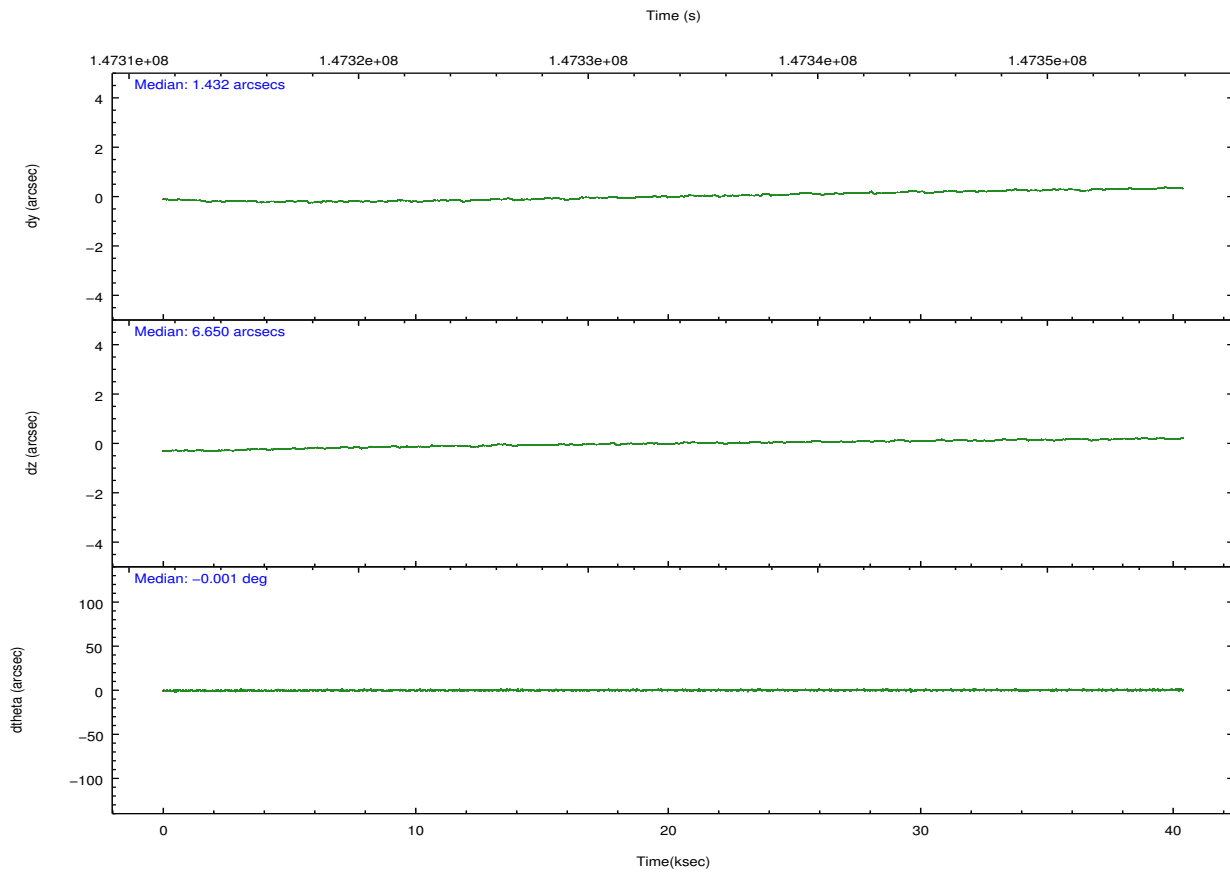
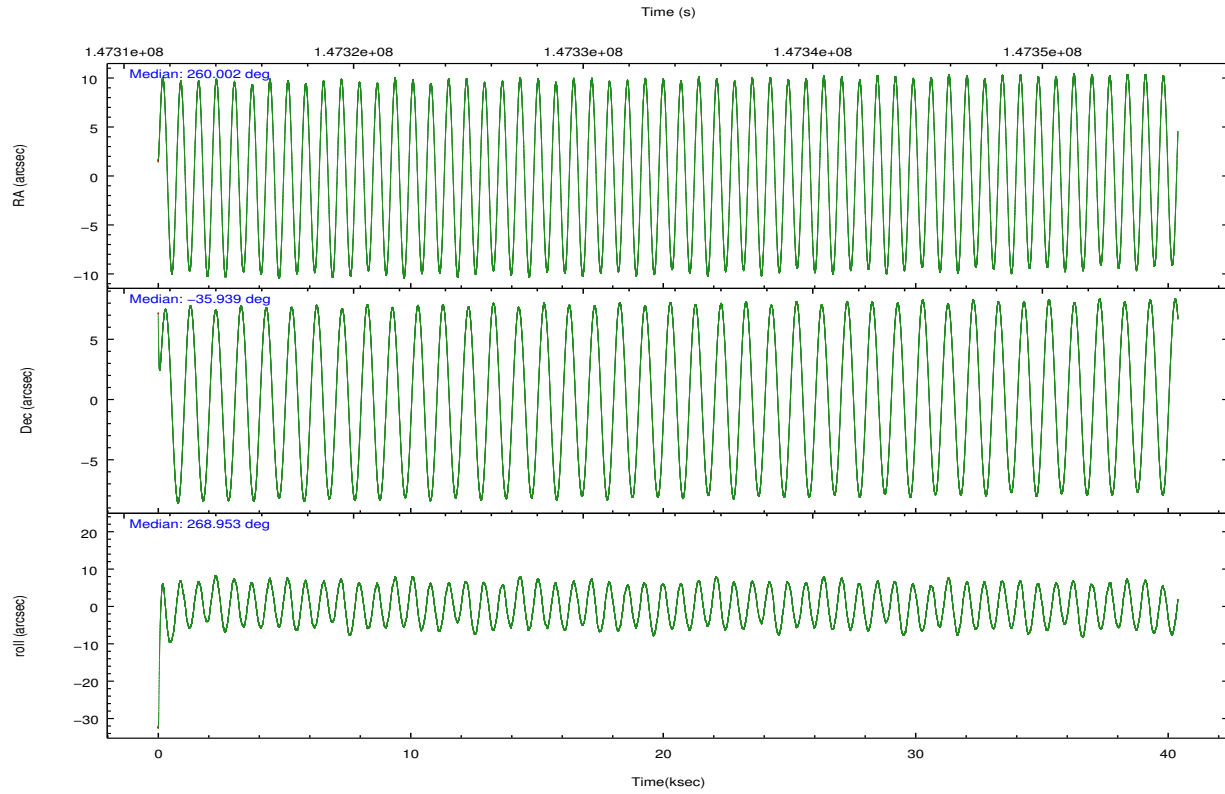
2.2 Compared Parameters

Parameter	Planned	Actual
Instrument	ACIS	ACIS
Detector	ACIS-012367	ACIS-012367
Grating	NONE	NONE
Data mode	FAINT	FAINT
Observation mode	POINTING	POINTING
[deg] Pointing RA	259.985349	260.0018234091175
[deg] Pointing Dec	-35.915608	-35.93951618094295
[deg] Pointing Roll	268.740156	268.9585057650046
[deg] Roll angle	270.000000	270.000000
[deg] Roll tolerance	10.000000	10.000000
Roll constraint allows 180D rotation	N	N
[mm] SIM focus pos	-0.782348	-0.7809083437167272
[mm] SIM defocus	0	0.001439871863259334
[mm] SIM translation stage pos	-233.592463	-233.5874344608287
[mm] SIM translation stage offset	0	-0.005018542100998502
[s] Observation start time (MET)	147313799.184000	147312773.20795
Observation start date	2002-09-02T00:28:55	2002-09-02T00:12:53
[s] Observation end time (MET)	147353891.184000	147354205.24716
Observation end date	2002-09-02T11:37:07	2002-09-02T11:43:25
Read mode	TIMED	TIMED

Parameter	Planned	Actual
Obspar format version number	7	7
Obspar file type	PREDICTED	ACTUAL
Obspar update status	NONE	UPDATED
Number of optional ACIS chips dropped	0	0
On-chip summing requested	N	N
Subarray requested	NONE	NONE
Alternating exposures requested	N	N
[s] Primary exposure time	0.000000	3.2

2.3 Aspect



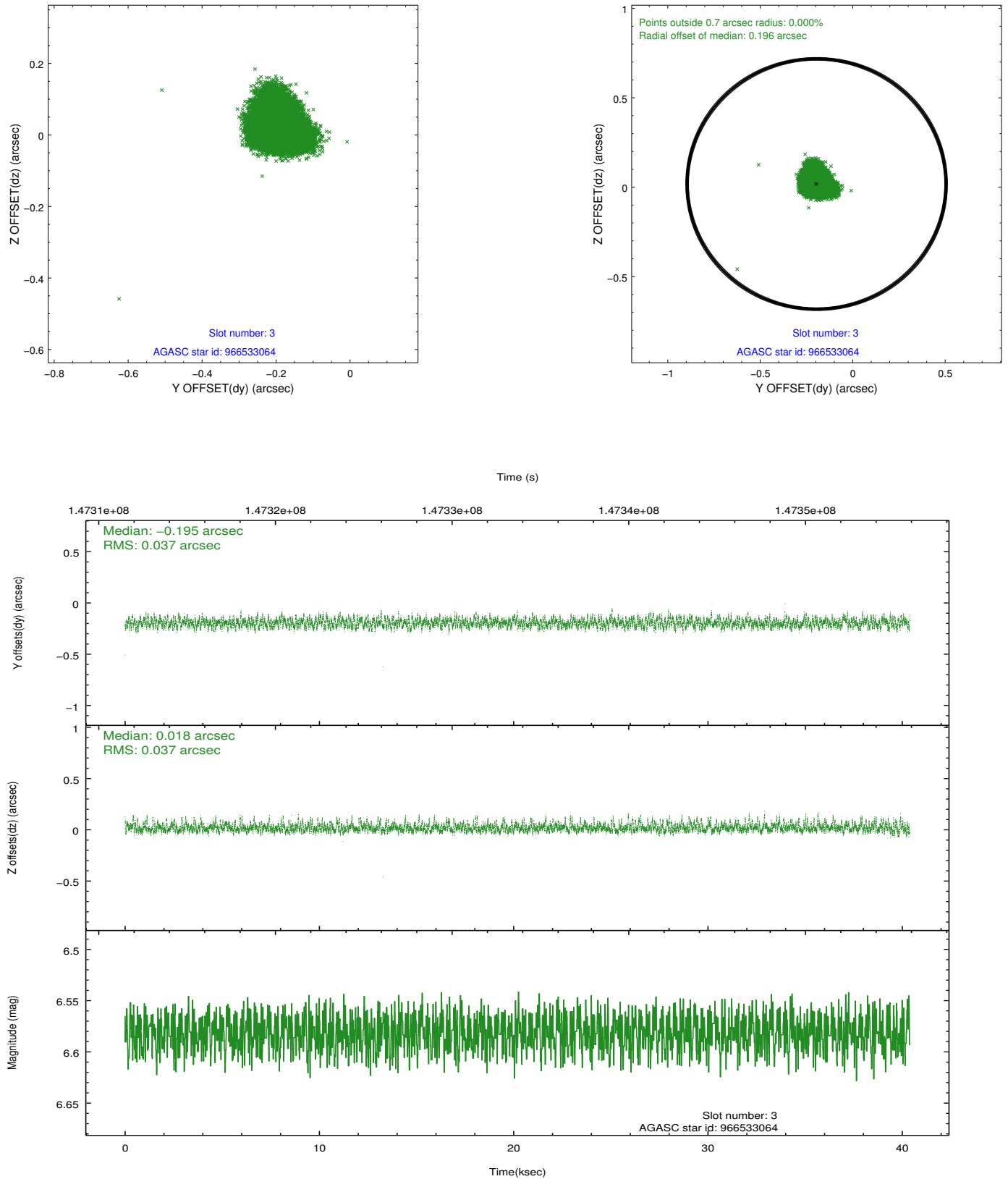


Slot Statistics

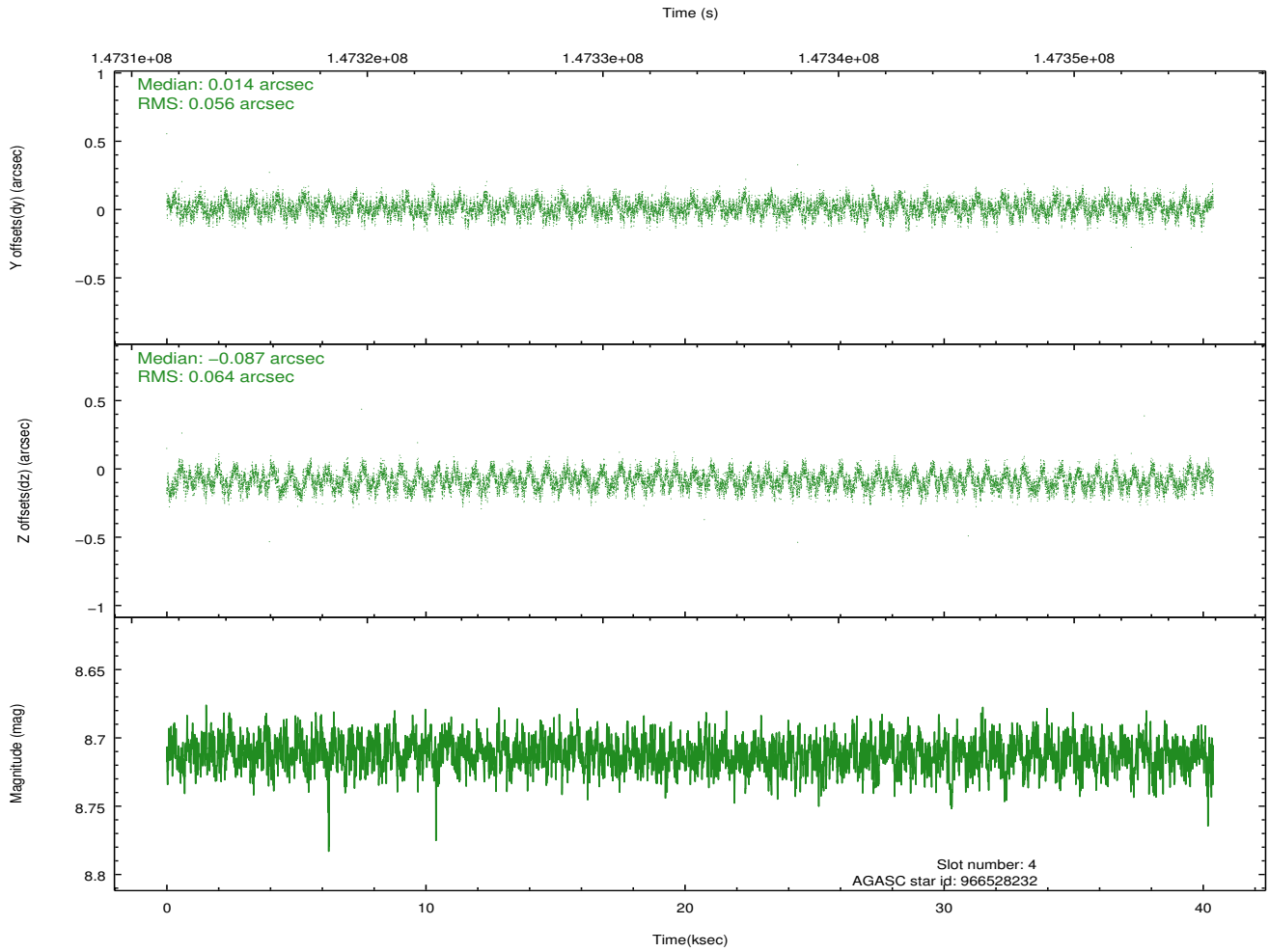
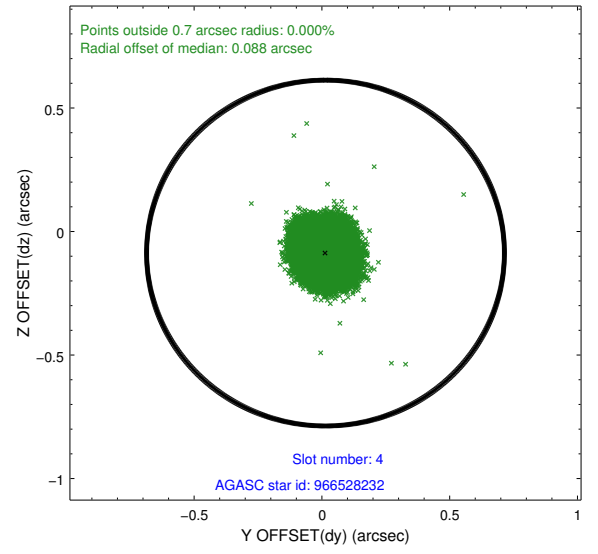
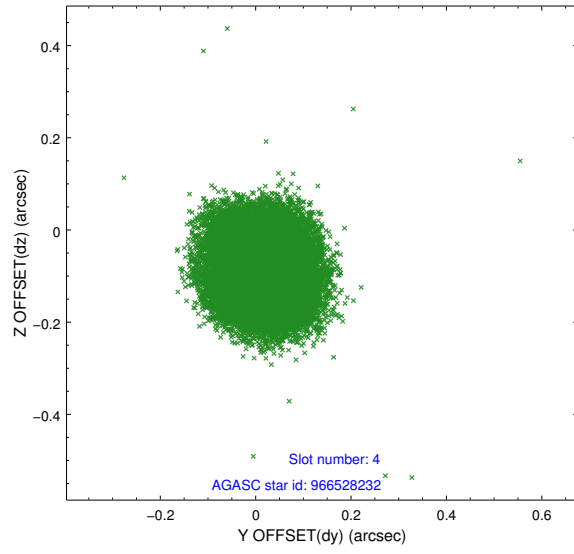
slot	status	id	mag	n_pts	med_dy	med_dz	dr1	dr2	ra	dec	mean_y	mean_z
0	FID	ACIS-I-1	7.25	9852	0.006	0.000	0.005	0.010	0.000000	0.000000	938.37	-830.03
1	FID	ACIS-I-5	7.24	9847	-0.066	0.050	0.005	0.010	0.000000	0.000000	-1809.76	1067.55
2	OMITTED		0.00	0	0.000	0.000	0.000	0.000	0.000000	0.000000	0.00	0.00
3	GUIDE	966533064	6.58	19700	-0.195	0.018	0.055	0.089	260.658145	-35.910729	-53.13	1961.33
4	GUIDE	966528232	8.71	19689	0.014	-0.087	0.093	0.140	259.270821	-36.205055	1096.67	-2051.76
5	GUIDE	966003568	8.01	19700	-0.098	-0.219	0.066	0.102	259.362539	-35.536668	-1316.41	-1854.26
6	GUIDE	966004472	8.32	19698	-0.074	0.116	0.082	0.140	260.641543	-35.382088	-1954.89	1883.53
7	GUIDE	966530544	8.77	19671	0.347	0.161	0.065	0.104	260.631187	-36.513761	2119.52	1916.37

2.4 Star Slots

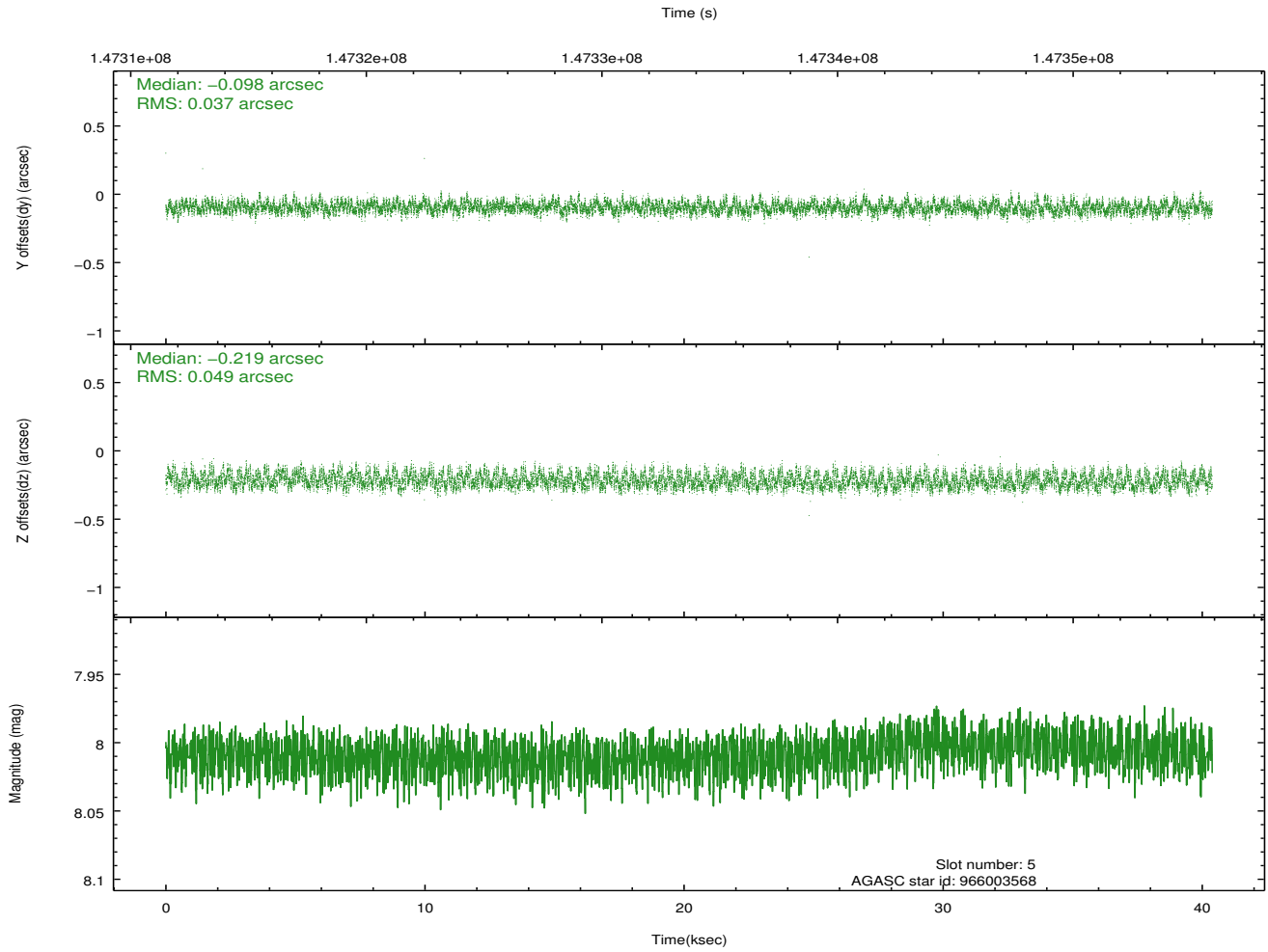
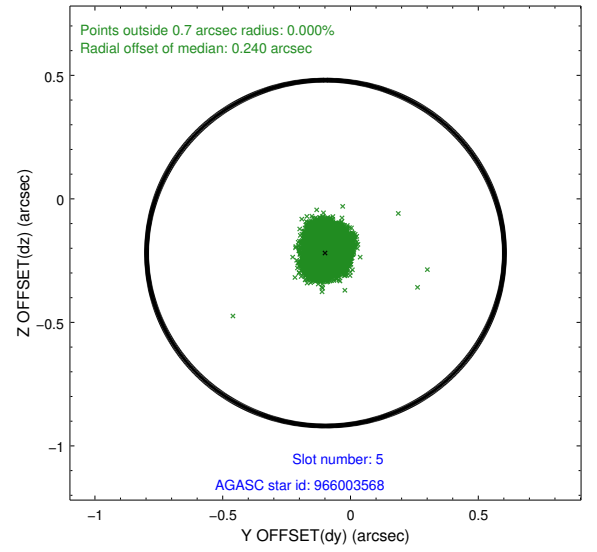
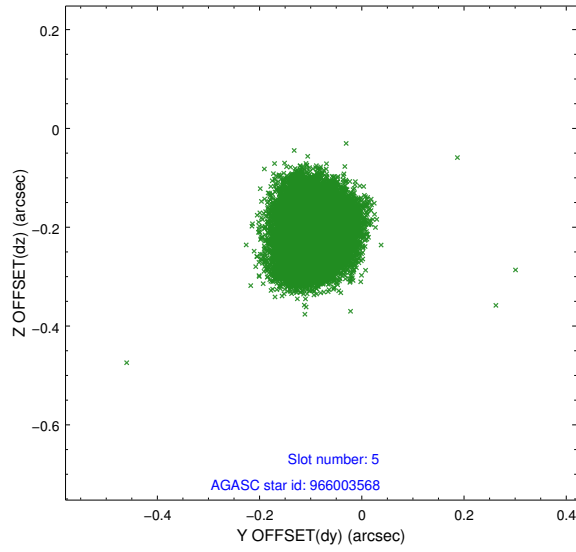
2.4.1 Slot 3



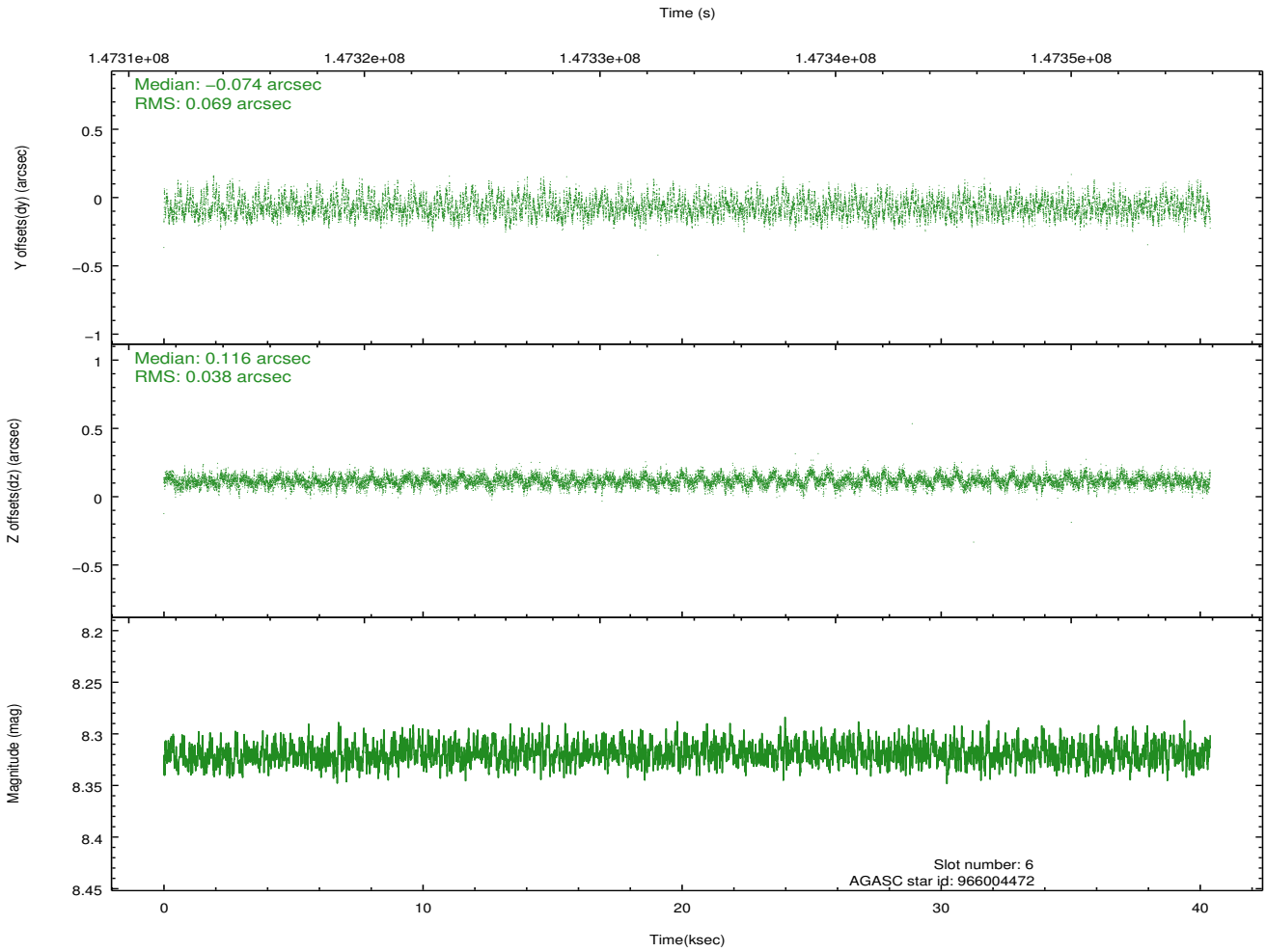
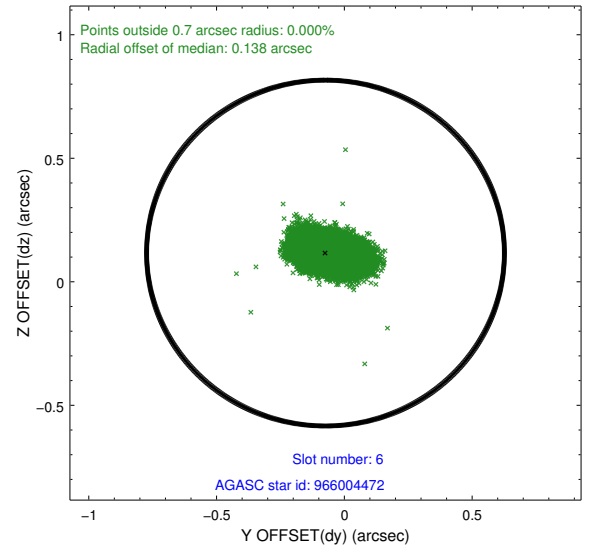
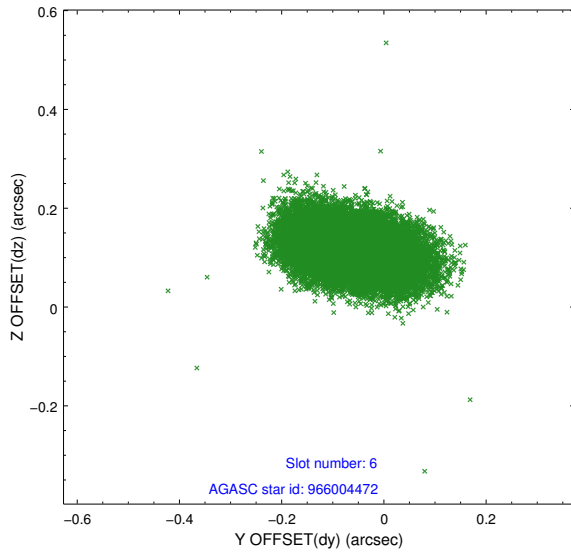
2.4.2 Slot 4



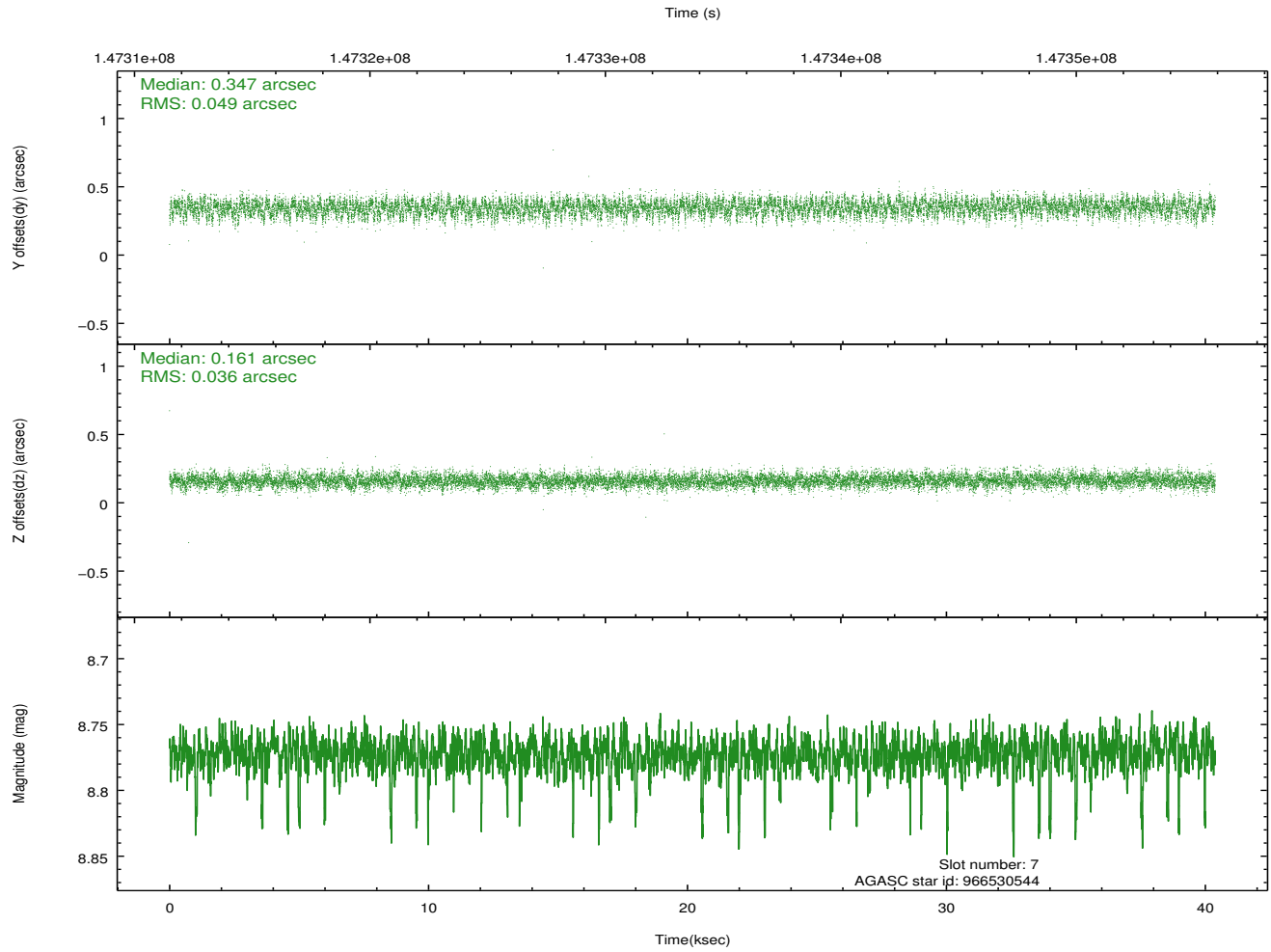
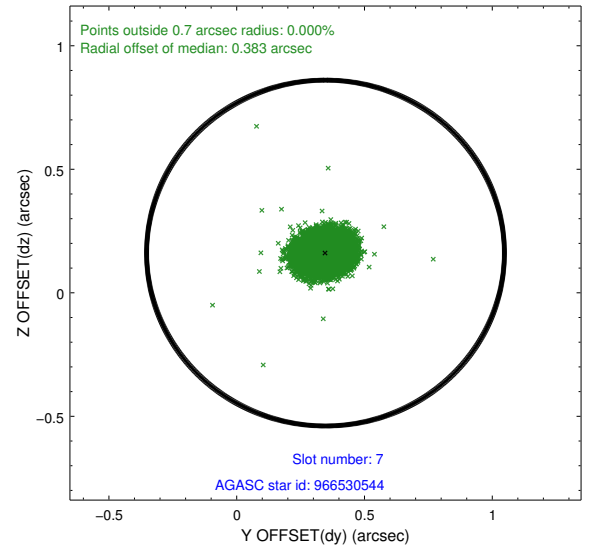
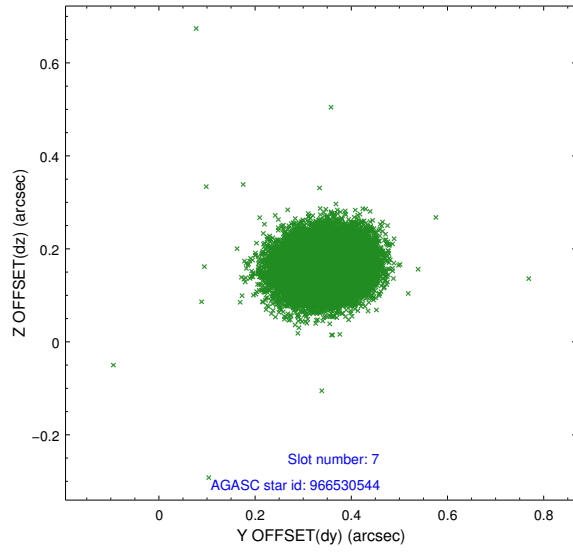
2.4.3 Slot 5



2.4.4 Slot 6

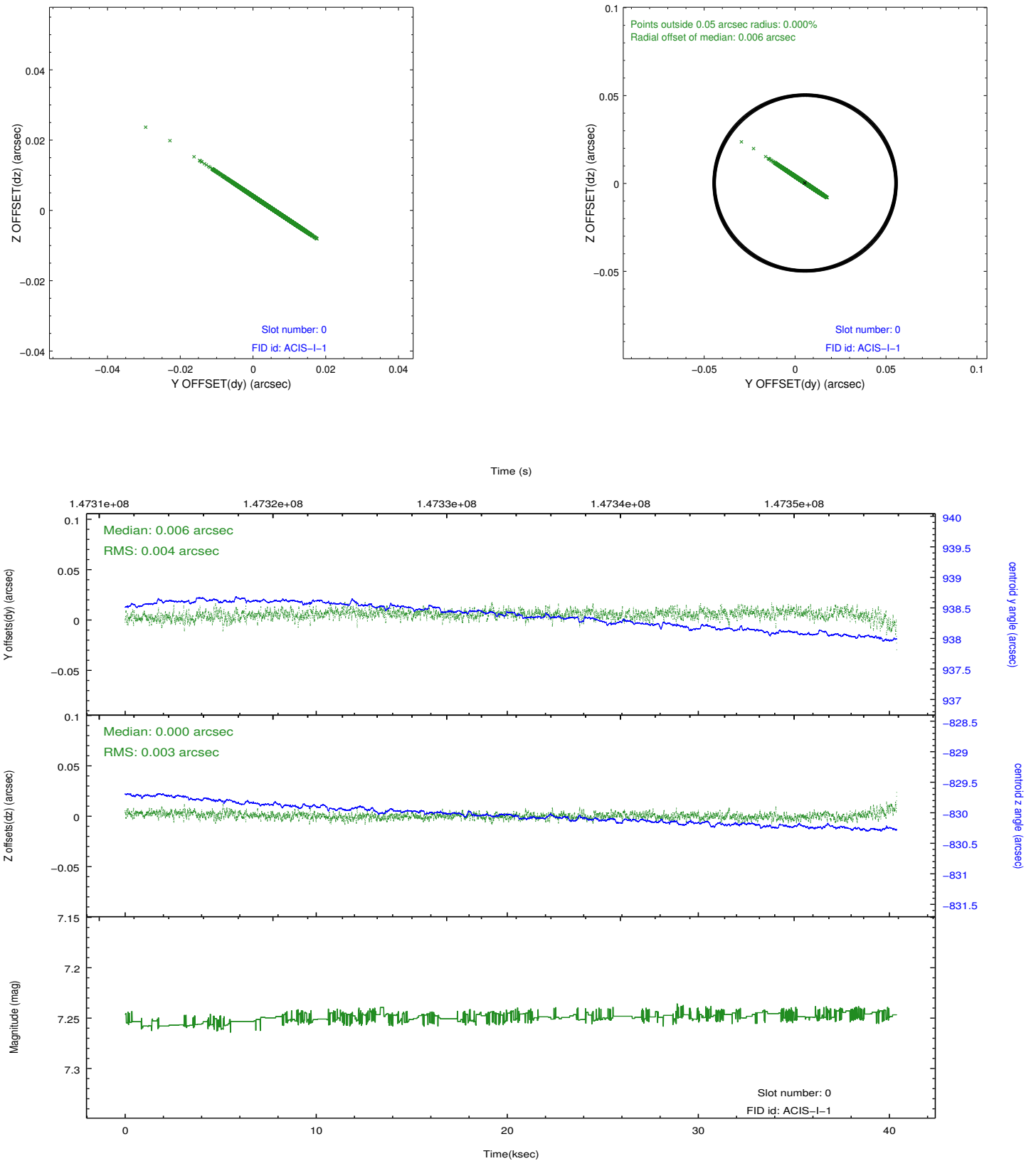


2.4.5 Slot 7

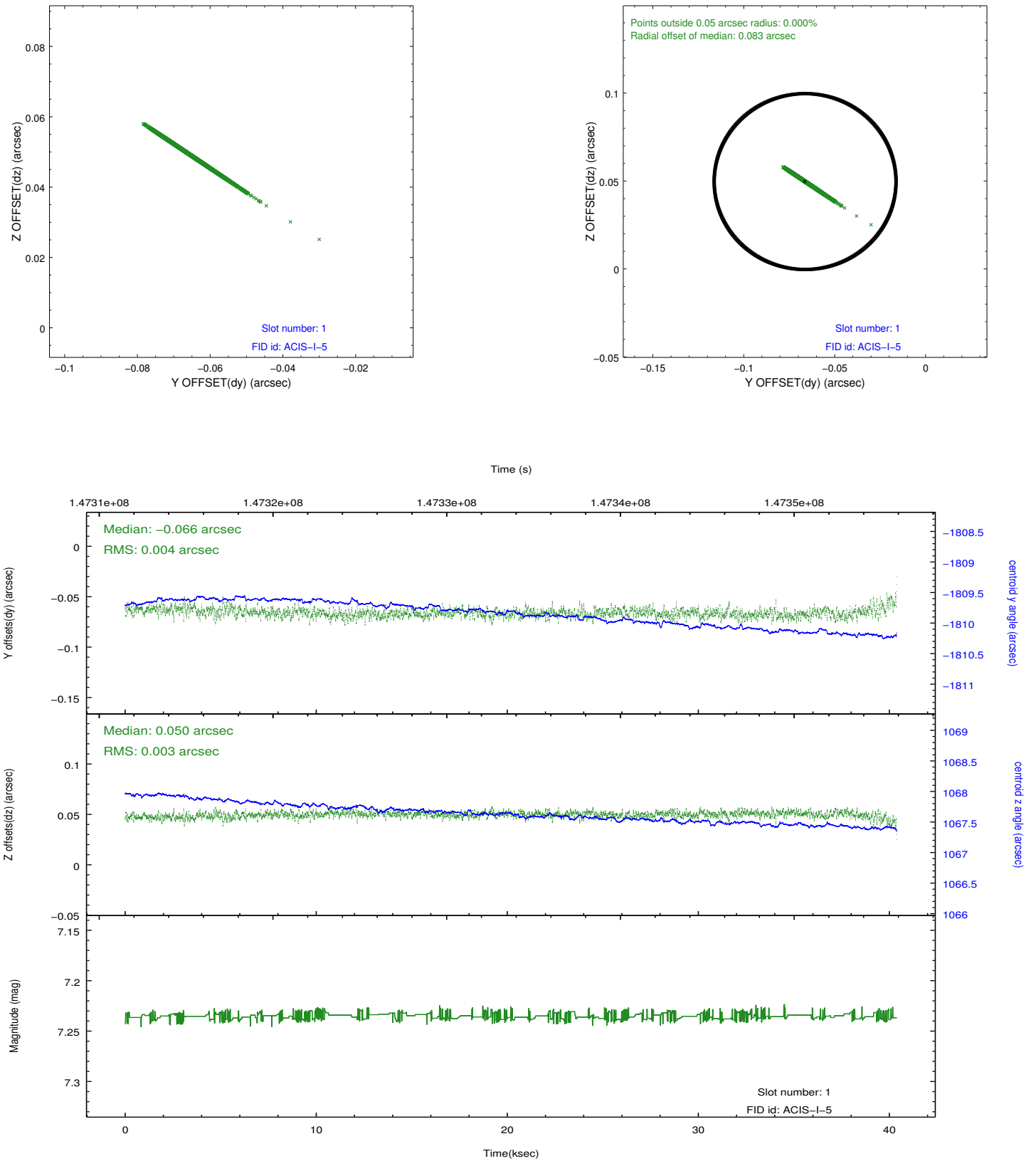


2.5 FID Slots

2.5.1 Slot 0



2.5.2 Slot 1



A Summary

A.1 Status

V&V Scientist	Beth Sundheim
V&V Date (YYYY-MM-DD)	2012.11.29
V&V Edition	1
V&V Disposition and Status	OK
V&V Charge Time	40.054

A.2 Comments

Roll preference met.

The fid light in slot 2 was removed from the aspect solution due to poor data quality. The aspect solution is improved by the removal of this fid light from the solution.