

V&V Reference Report

L2 ASCDS Version : 8.4.5

Observation 2243 - L2 Version 3
Chandra X-Ray Center

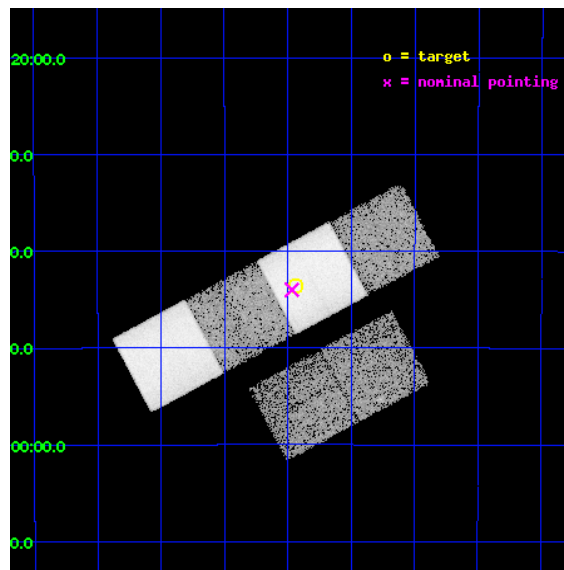
L2 Processing Date : Sep 2 2012

Contents

1	Front	2
2	OBI	3
2.1	OBI	3
2.1.1	Images	3
2.1.2	Bias	3
2.1.3	Parameters	4
2.1.4	Events	4
2.2	Compared Parameters	5
2.3	Aspect	6
2.4	Star Slots	9
2.4.1	Slot 3	9
2.4.2	Slot 4	10
2.4.3	Slot 5	11
2.4.4	Slot 6	12
2.4.5	Slot 7	13
2.5	FID Slots	14
2.5.1	Slot 0	14
2.5.2	Slot 1	15
2.5.3	Slot 2	16
A	Summary	17
A.1	Status	17
A.2	Comments	17

1 Front

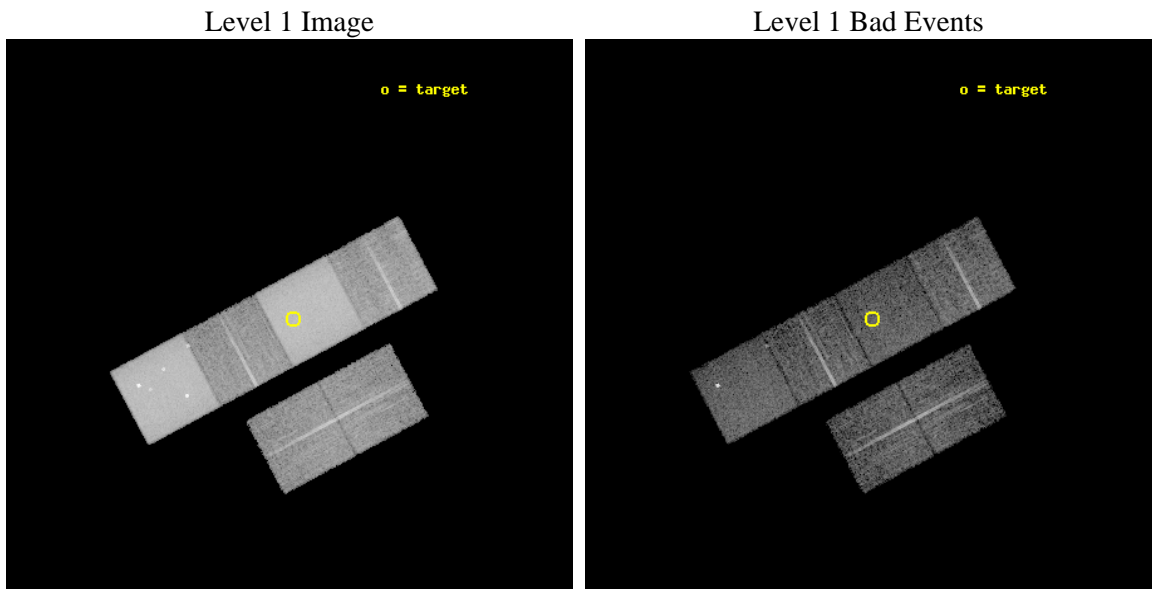
seq_num	900070	Sequence number
obs_id	2243	Observation id
title	THE NATURE OF NARROW-LINE, FIR-LUMINOUS, X-RAY GALAXIES	Proposal t
observer	PROFESSOR TOM SHANKS	Principal investigator
object	GSGP4X:057	Source name
dtcycle	0	
cycle	P	events from which exps? Prim/Second/Both
ra_targ	14.358333	Observer's specified target RA [deg]
dec_targ	-27.727222	Observer's specified target Dec [deg]
ra_nom	14.367006129308	Nominal RA [deg]
dec_nom	-27.733351527191	Nominal Dec [deg]
roll_nom	331.90463354014	Nominal Roll [deg]
revision	3	Processing version of data
ontime	8960.0000083297	Sum of GTIs [s]
livetime	8846.54309316	Livetime [s]
ontime2	8960.0000083297	Sum of GTIs [s]
ontime3	8960.0000083297	Sum of GTIs [s]
ontime5	8960.0000083297	Sum of GTIs [s]
ontime6	8960.0000083297	Sum of GTIs [s]
ontime7	8960.0000083297	Sum of GTIs [s]
ontime8	8956.7590380907	Sum of GTIs [s]
l2events	292970	Number of level 2 events



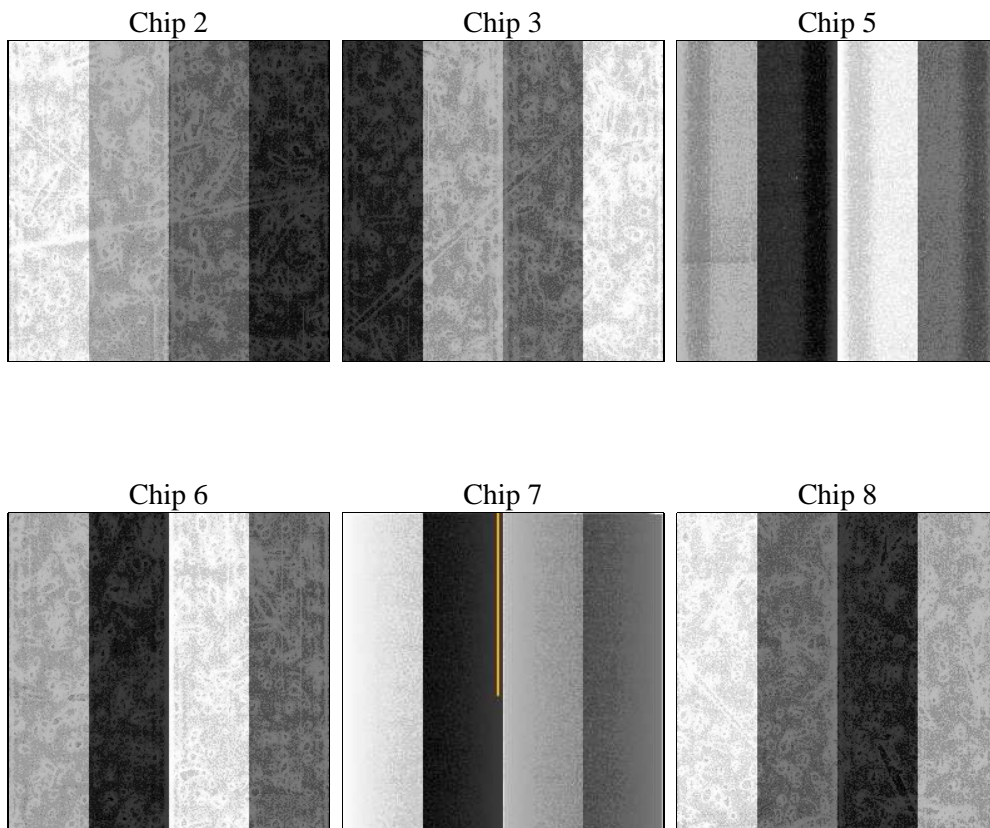
2 OBI

2.1 OBI

2.1.1 Images



2.1.2 Bias



2.1.3 Parameters

obi_num	0	Obi number	sched_exp_time	9200.000000	[s] Scheduled observation exposure time
ascdsver	8.4.5	Processing system revision	ontime	8960.0000083297	Sum of GTIs [s]
caldsver	4.5.1.1	 	ontime2	8960.0000083297	Sum of GTIs [s]
date	2012-09-03T00:35:11	Date and time of file creation	ontime3	8960.0000083297	Sum of GTIs [s]
revision	3	Processing version of data	ontime5	8960.0000083297	Sum of GTIs [s]
			ontime6	8960.0000083297	Sum of GTIs [s]
			ontime7	8960.0000083297	Sum of GTIs [s]
			ontime8	8956.7590380907	Sum of GTIs [s]
			l1events	596888	Number of level 1 events

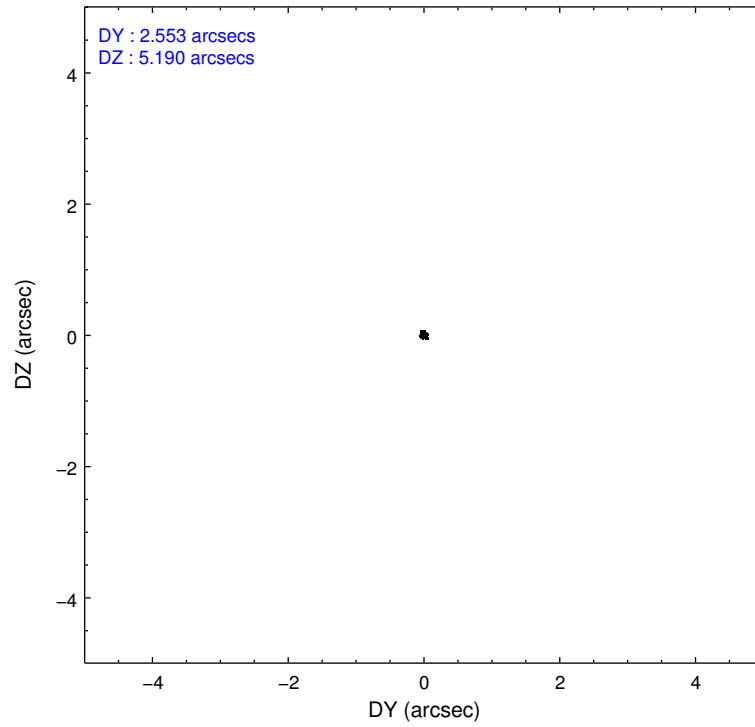
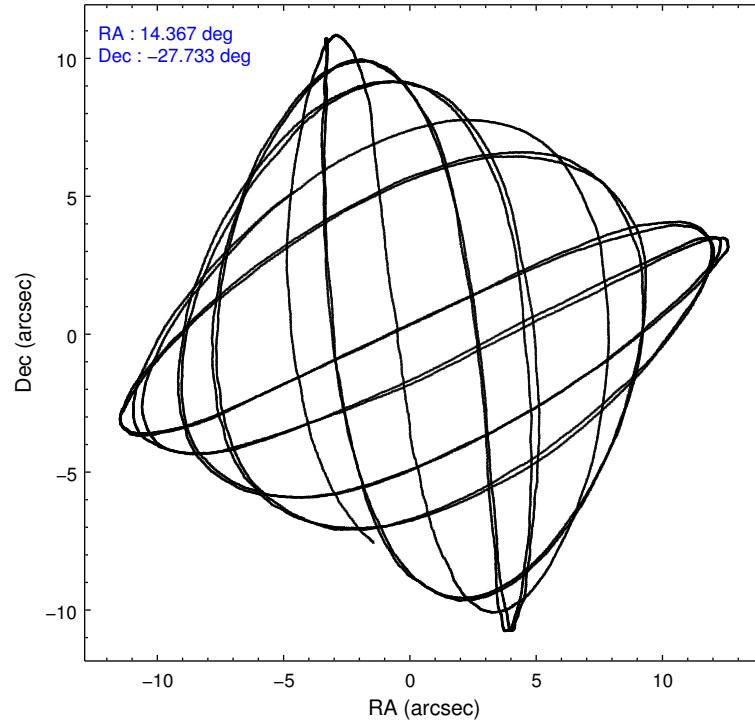
2.1.4 Events

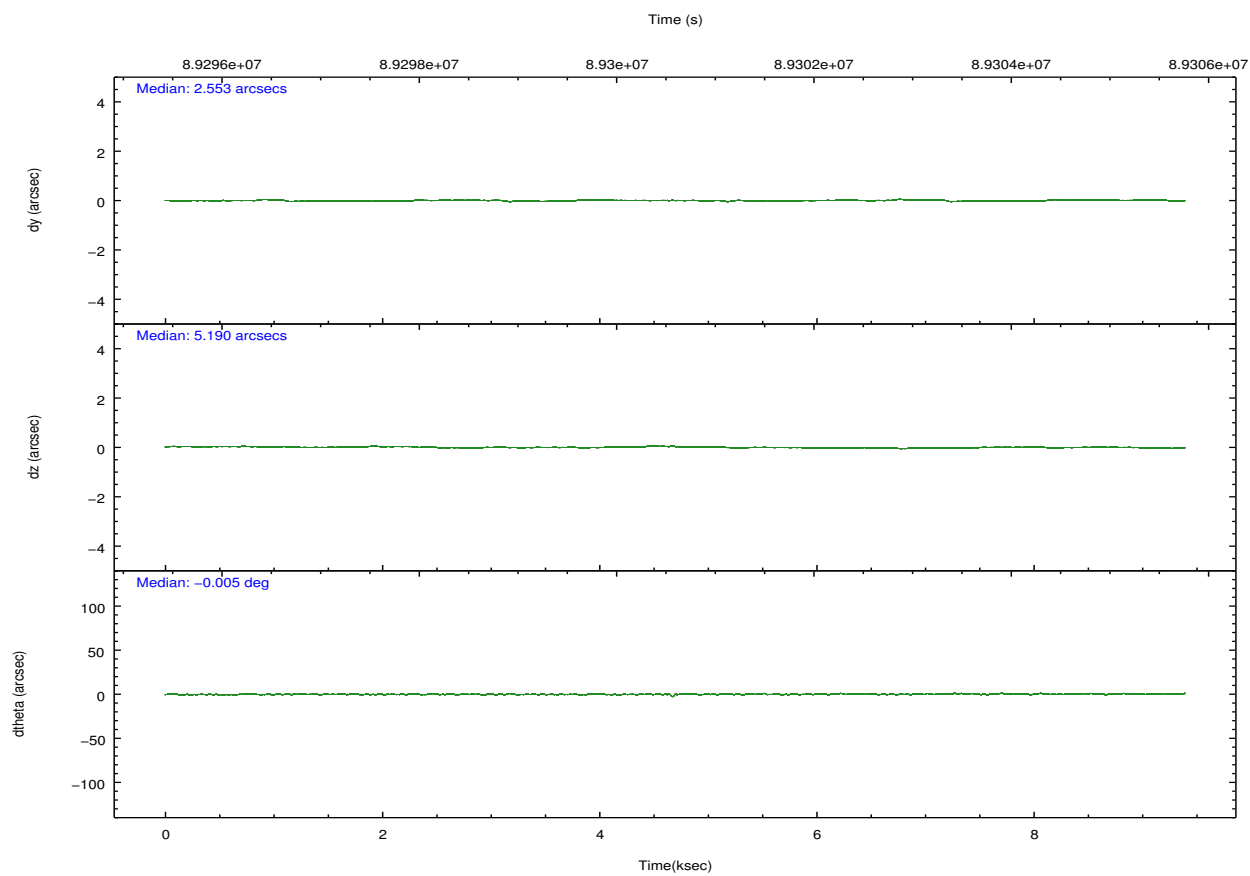
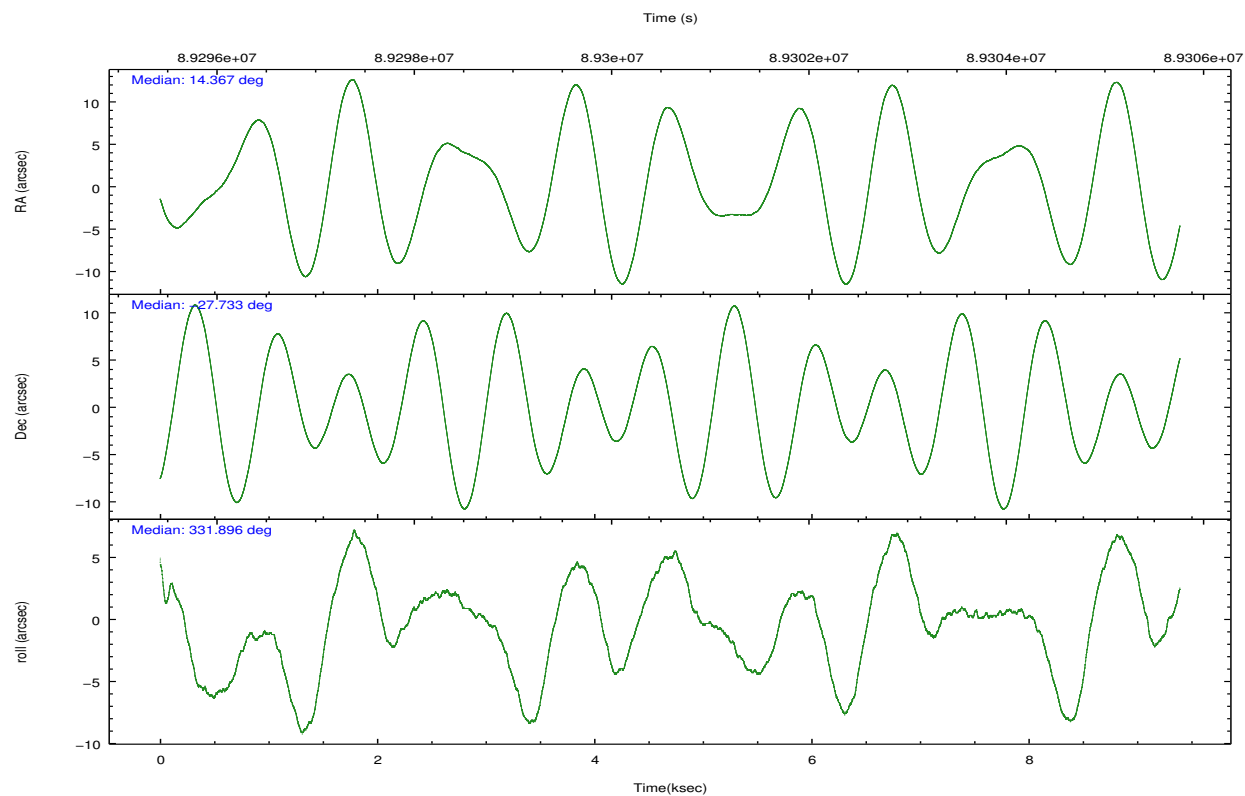
	ccd 2	ccd 3	ccd 5	ccd 6	ccd 7	ccd 8		ccd 2	ccd 3	ccd 5	ccd 6	ccd 7	ccd 8
level 1 events	55012	54670	179341	59345	175019	73501	grade 0 events	4487	4687	23876	7664	16188	8329
rejected events	46747	46266	48440	47423	40718	55165		8%	8%	13%	12%	9%	11%
rejected %	84%	84%	27%	79%	23%	75%	grade 1 events	37	34	188	44	68	61
								0%	0%	0%	0%	0%	0%
							grade 2 events	1513	1420	36218	1728	24340	3327
								2%	2%	20%	2%	13%	4%
							grade 3 events	598	588	7944	684	10967	1678
								1%	1%	4%	1%	6%	2%
							grade 4 events	579	623	7681	630	10707	1525
								1%	1%	4%	1%	6%	2%
							grade 5 events	1828	1958	7323	2186	7021	2689
								3%	3%	4%	3%	4%	3%
							grade 6 events	1088	1089	55228	1220	72144	3480
								1%	1%	30%	2%	41%	4%
							grade 7 events	44882	44271	40883	45189	33584	52412
								81%	80%	22%	76%	19%	71%

2.2 Compared Parameters

Parameter	Planned	Actual	Parameter	Planned	Actual
Instrument	ACIS	ACIS	Obspar format version number	7	7
Detector	ACIS-235678	ACIS-235678	Obspar file type	PREDICTED	ACTUAL
Grating	NONE	NONE	Obspar update status	NONE	UPDATED
Data mode	FAINT	FAINT	Number of optional ACIS chips dropped	0	0
Observation mode	POINTING	POINTING	On-chip summing requested	N	N
[deg] Pointing RA	14.336190	14.3670061293077	Subarray requested	NONE	NONE
[deg] Pointing Dec	-27.734467	-27.7333515271913	Alternating exposures requested	N	N
[deg] Pointing Roll	331.733666	331.904633540142	[s] Primary exposure time	0.000000	3.2
[mm] SIM focus pos	-0.684267	-0.6828225247311905			
[mm] SIM defocus	0	0.001444936568705701			
[mm] SIM translation stage pos	-190.132523	-190.1400660498719			
[mm] SIM translation stage offset	0	0.00754346686406393			
[s] Observation start time (MET)	89296085.184000	89295709.120397			
Observation start date	2000-10-30T12:27:01	2000-10-30T12:21:49			
[s] Observation end time (MET)	89305285.184000	89305418.94576401			
Observation end date	2000-10-30T15:00:21	2000-10-30T15:03:38			
Read mode	TIMED	TIMED			

2.3 Aspect



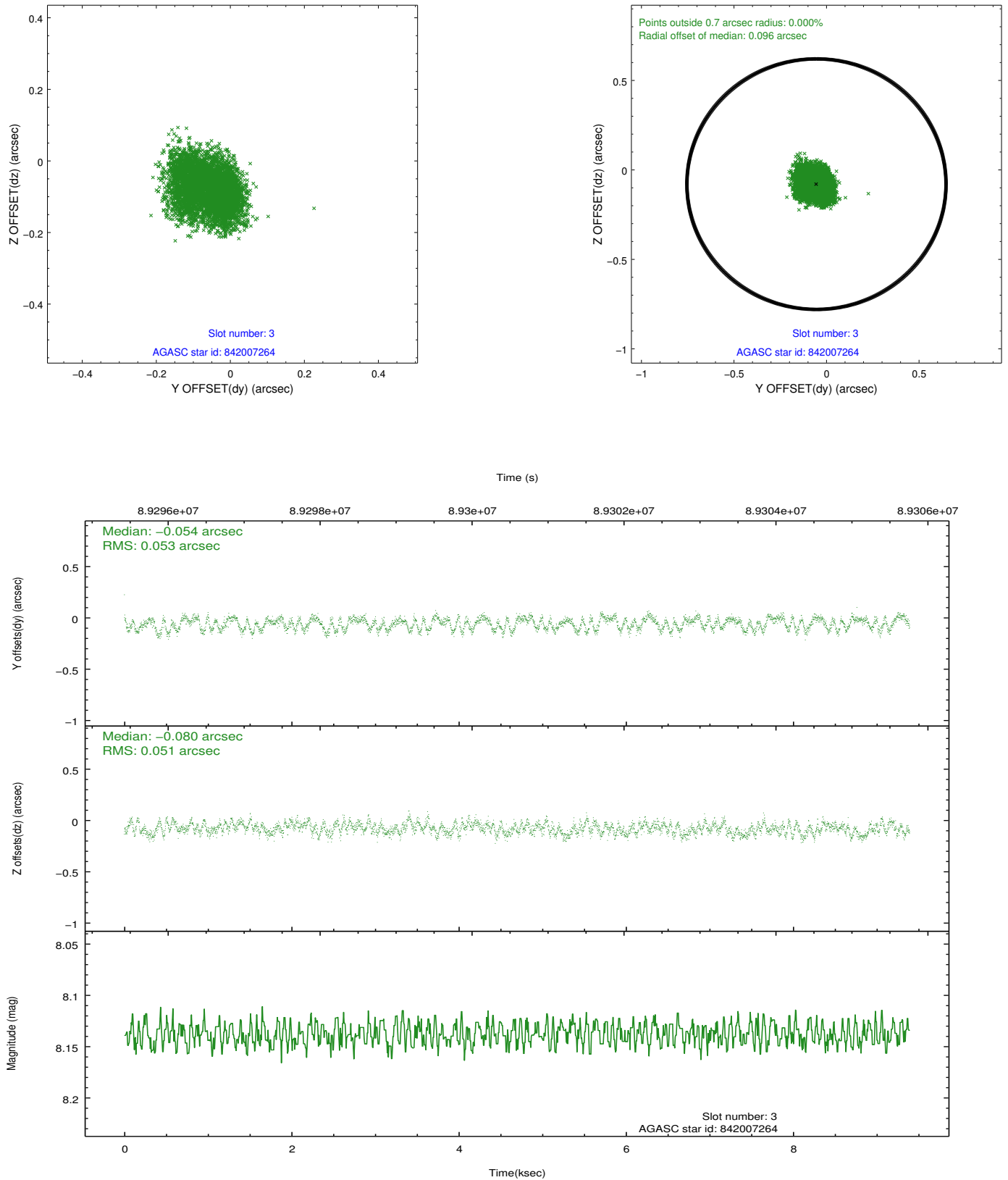


Slot Statistics

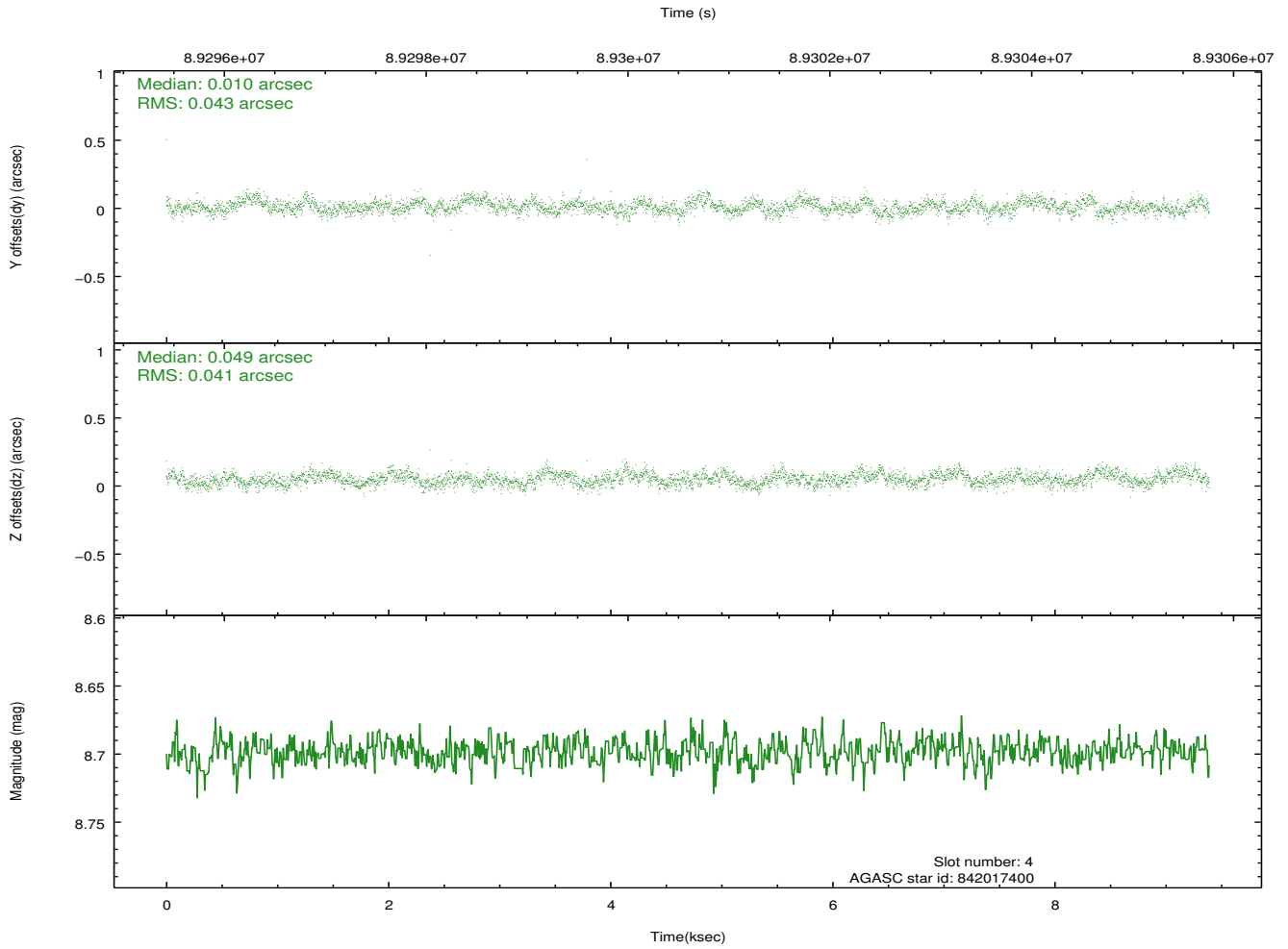
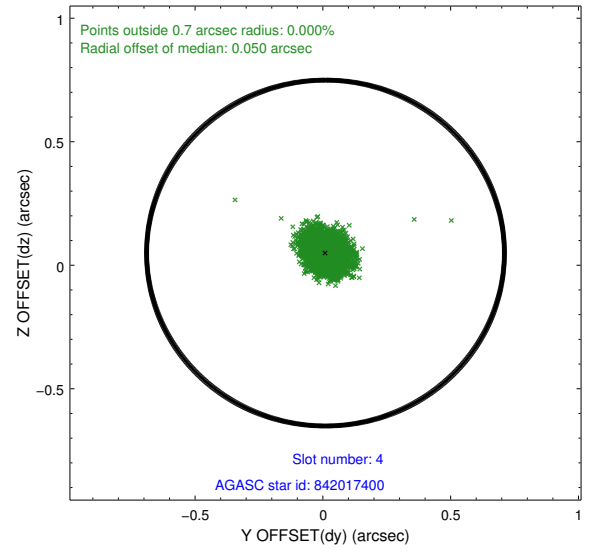
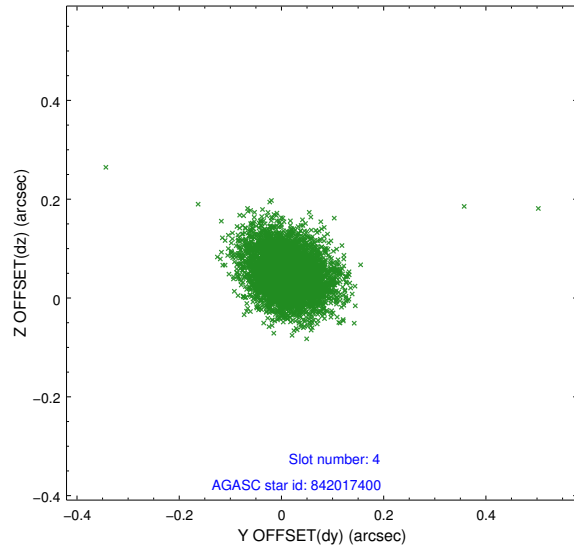
slot	status	id	mag	n_pts	med_dy	med_dz	dr1	dr2	ra	dec	mean_y	mean_z
0	FID	ACIS-S-2	7.11	2291	-0.039	-0.004	0.011	0.017	0.000000	0.000000	-755.19	-1726.33
1	FID	ACIS-S-4	7.21	2290	-0.007	0.020	0.015	0.024	0.000000	0.000000	2157.83	181.64
2	FID	ACIS-S-5	7.24	2291	0.014	-0.007	0.011	0.018	0.000000	0.000000	-1807.27	175.87
3	GUIDE	842007264	8.14	4582	-0.054	-0.080	0.080	0.121	14.570692	-27.092422	-431.13	2391.06
4	GUIDE	842017400	8.70	4583	0.010	0.049	0.062	0.102	14.466062	-28.061705	923.00	-841.54
5	GUIDE	842015088	9.31	4582	-0.062	0.071	0.079	0.127	13.933025	-27.893682	-855.50	-1114.29
6	GUIDE	842008736	10.38	4579	0.104	-0.019	0.162	0.253	14.870220	-27.799337	1611.58	596.56
7	GUIDE	842007696	9.69	4581	0.010	-0.023	0.092	0.150	14.456243	-28.218698	1163.18	-1354.80

2.4 Star Slots

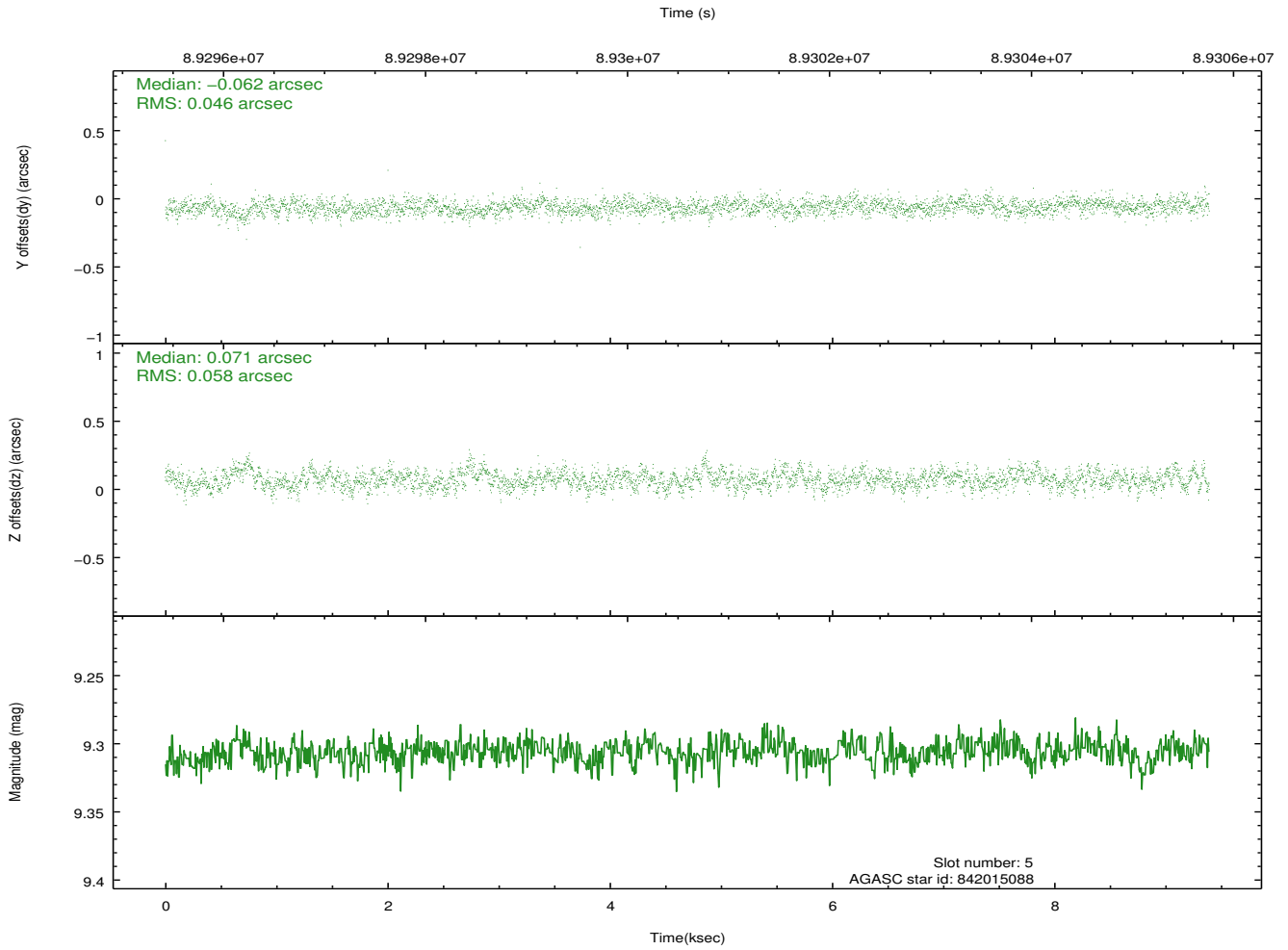
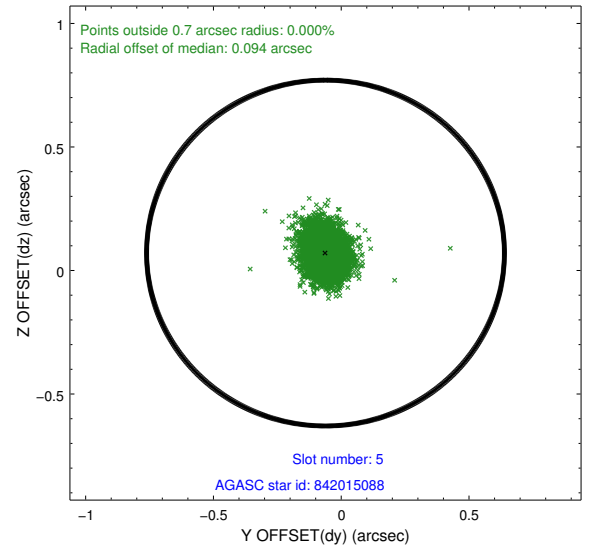
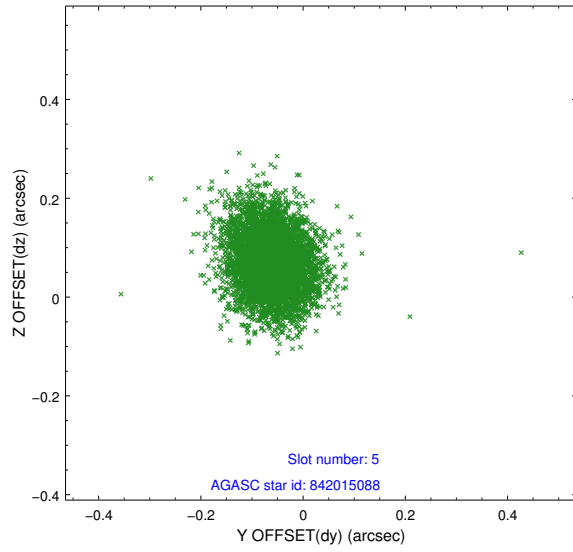
2.4.1 Slot 3



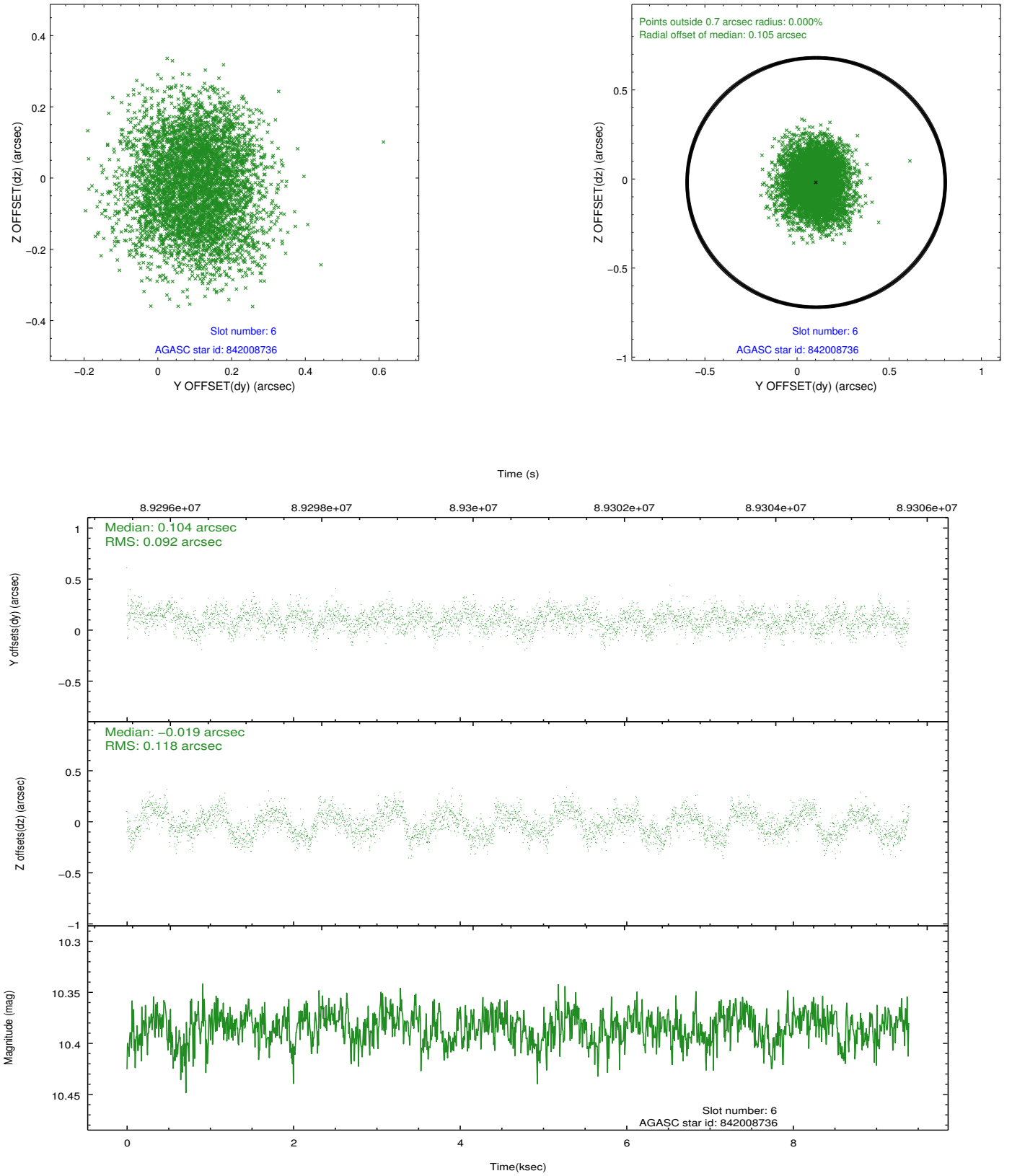
2.4.2 Slot 4



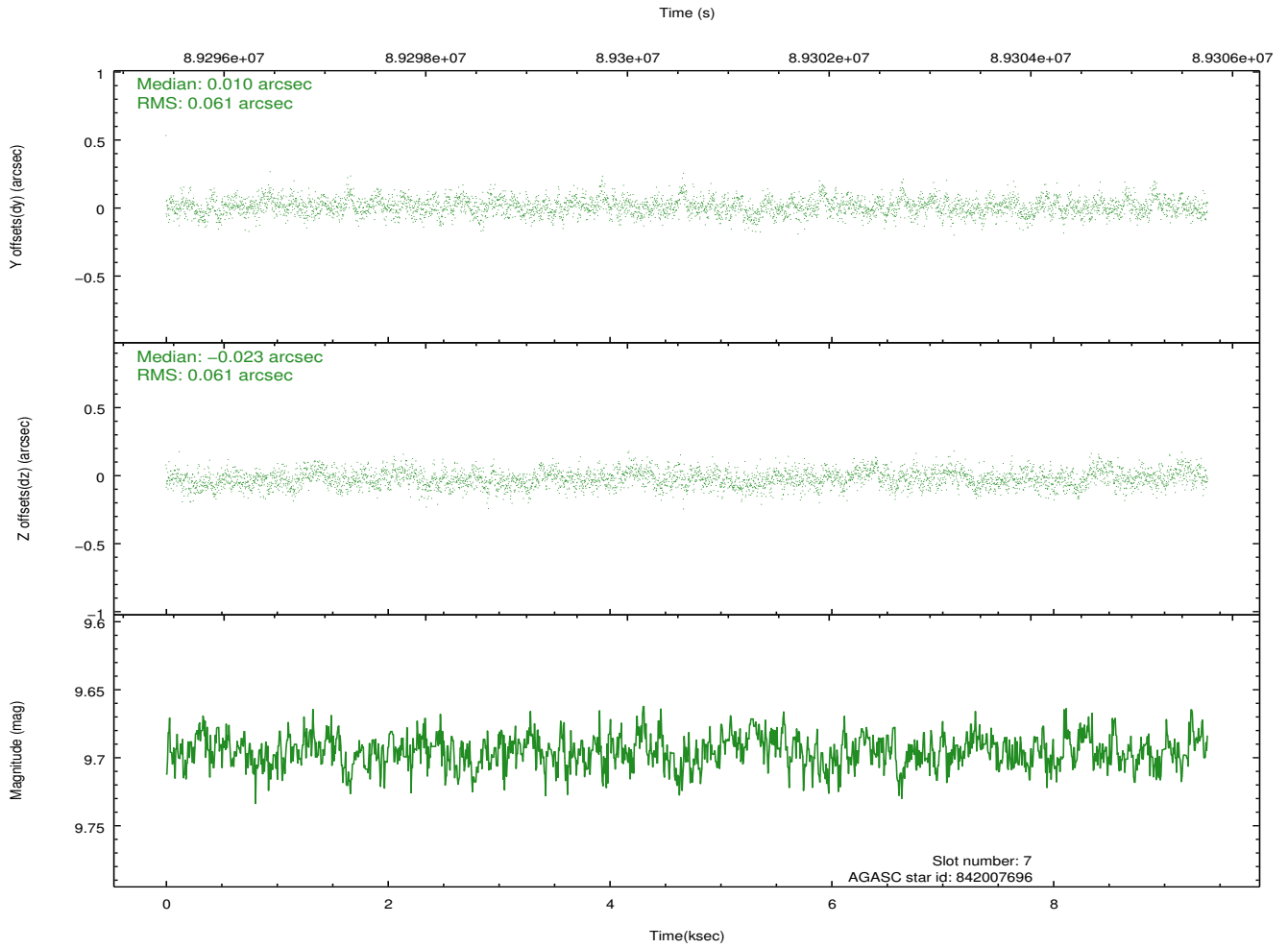
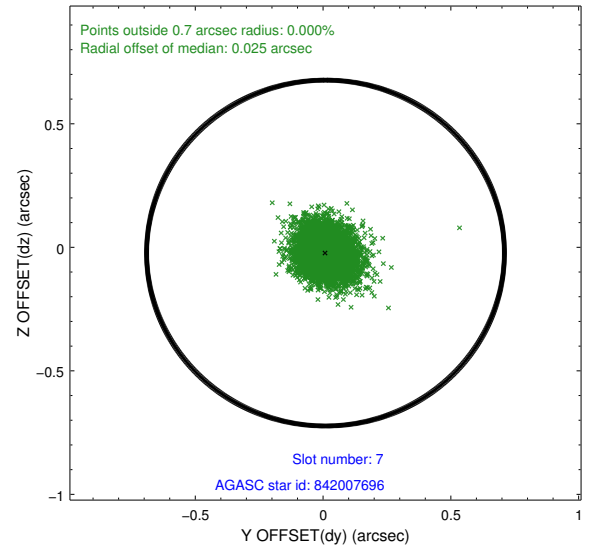
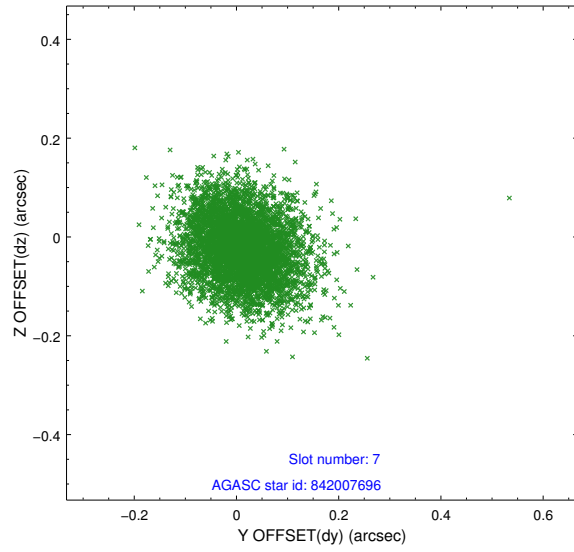
2.4.3 Slot 5



2.4.4 Slot 6

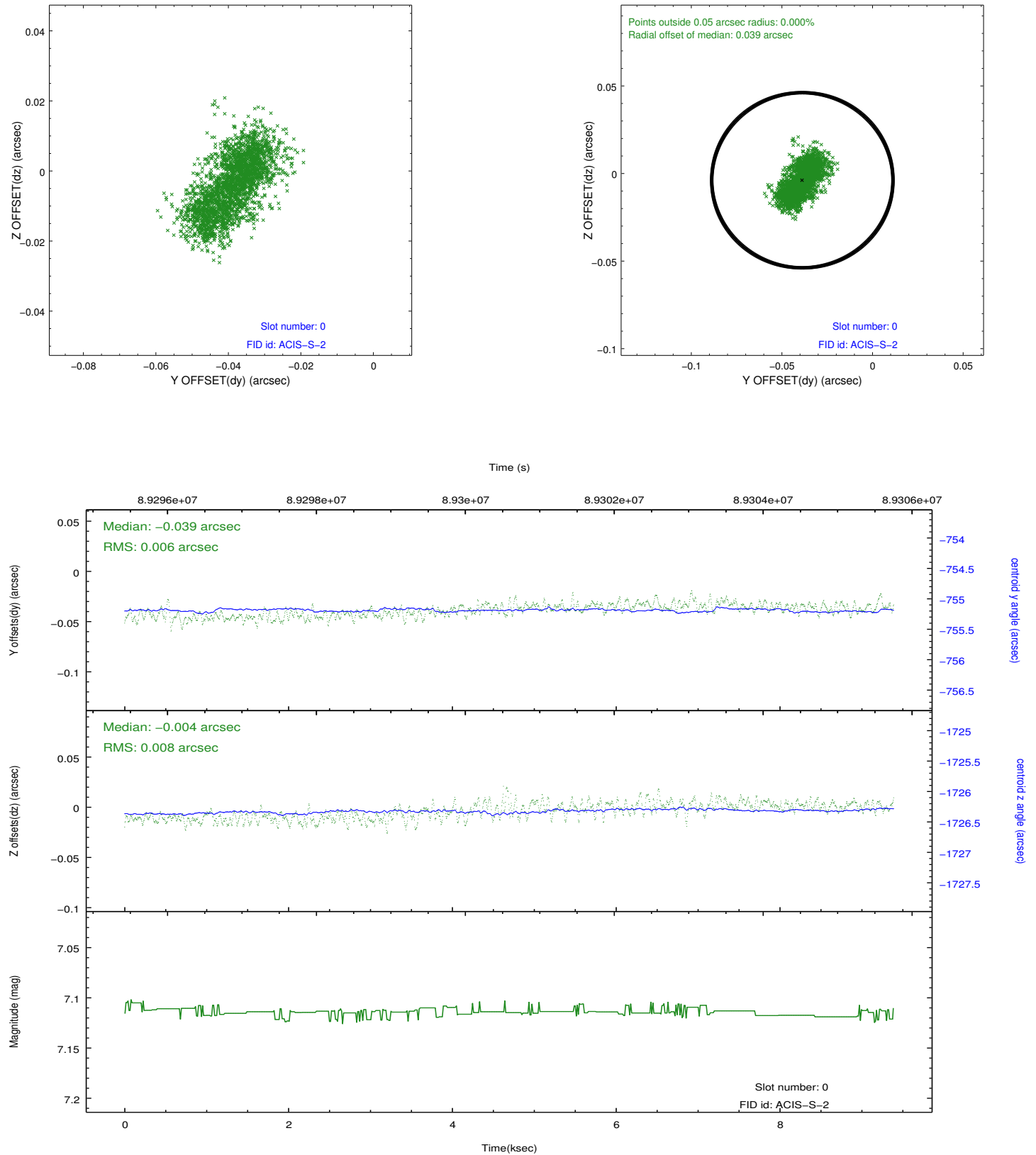


2.4.5 Slot 7

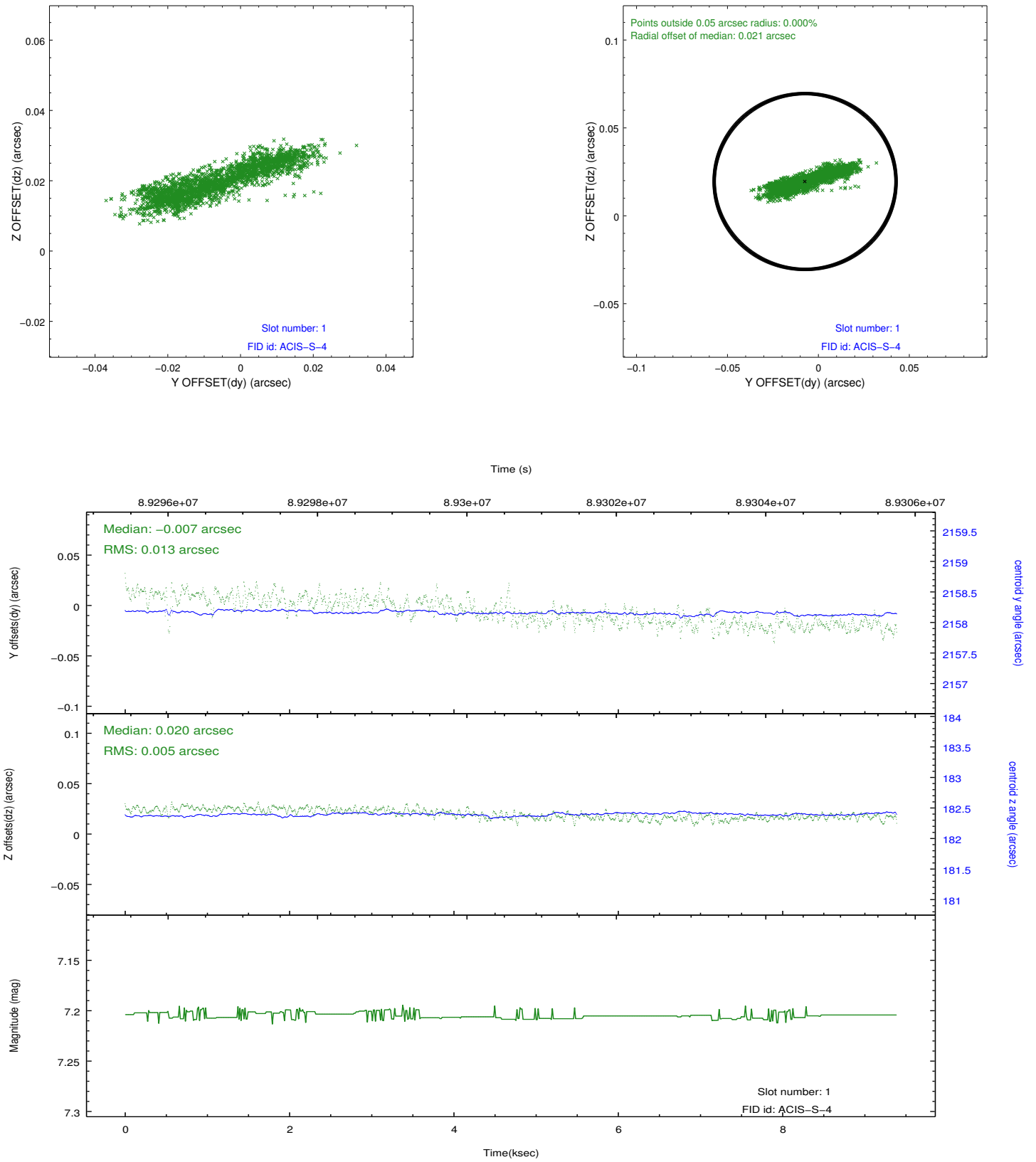


2.5 FID Slots

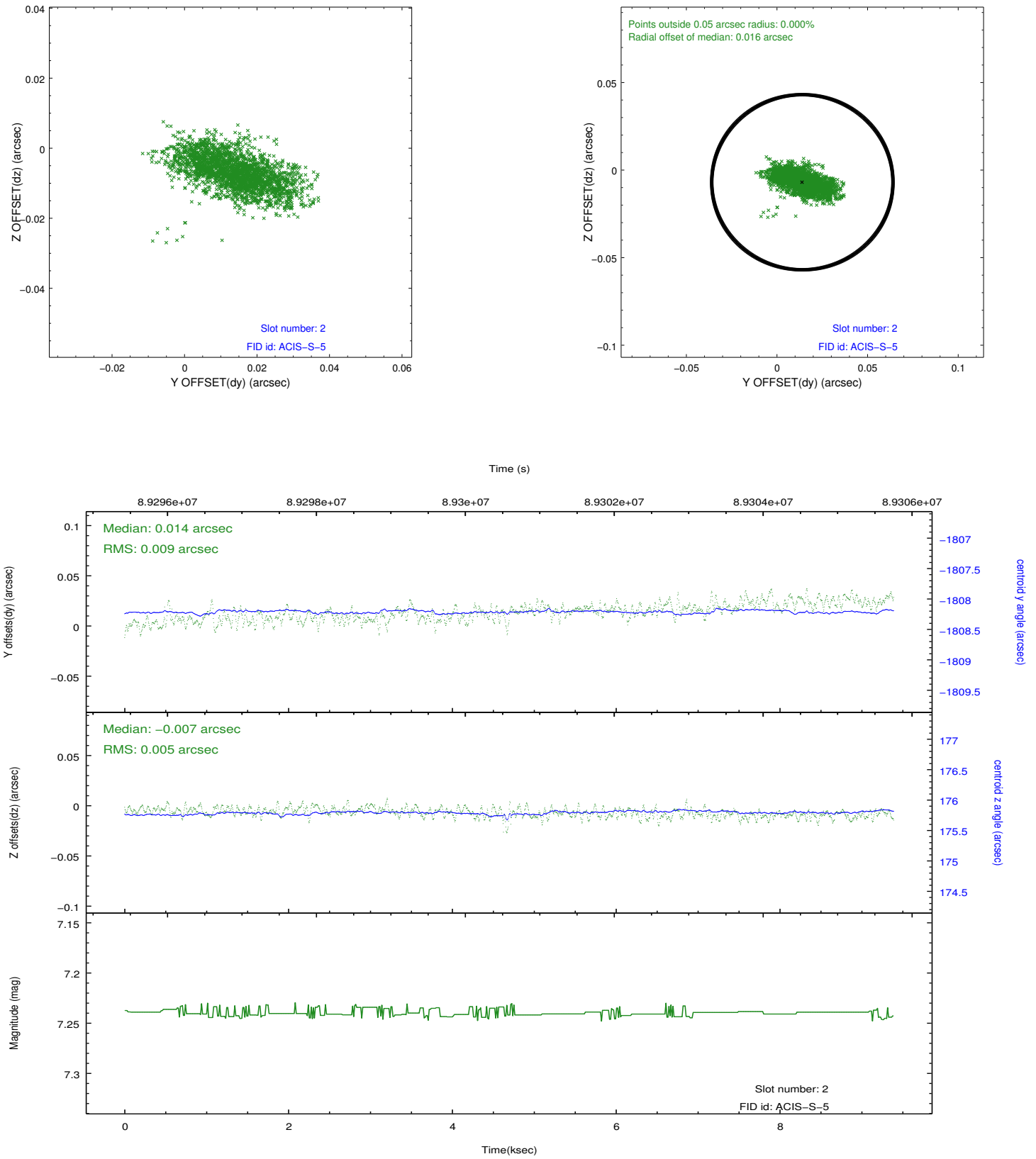
2.5.1 Slot 0



2.5.2 Slot 1



2.5.3 Slot 2



A Summary

A.1 Status

V&V Scientist	Jen Lauer
V&V Date (YYYY-MM-DD)	2012.09.10
V&V Edition	1
V&V Disposition and Status	OK
V&V Charge Time	8.963

A.2 Comments