

V&V Reference Report

L2 ASCDS Version : 7.6.8.1

Observation 2193 - L2 Version 001
Chandra X-Ray Center

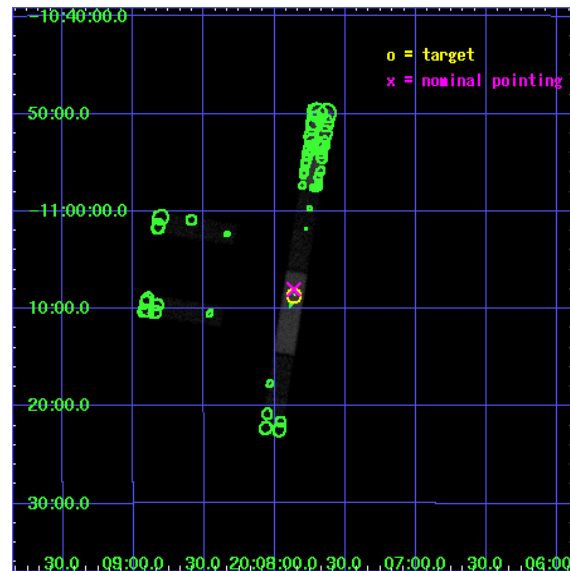
L2 Processing Date : Sep 9 2006

Contents

1	Front	2
2	OBI	3
2.1	OBI	3
2.1.1	Images	3
2.1.2	Bias	3
2.1.3	Parameters	4
2.1.4	Events	4
2.2	Compared Parameters	5
2.3	Aspect	6
2.4	Star Slots	9
2.4.1	Slot 3	9
2.4.2	Slot 4	10
2.4.3	Slot 5	11
2.4.4	Slot 6	12
2.4.5	Slot 7	13
2.5	FID Slots	14
2.5.1	Slot 0	14
2.5.2	Slot 1	15
2.5.3	Slot 2	16
3	Point Sources	17
A	Summary	18
A.1	Status	18
A.2	Comments	18

1 Front

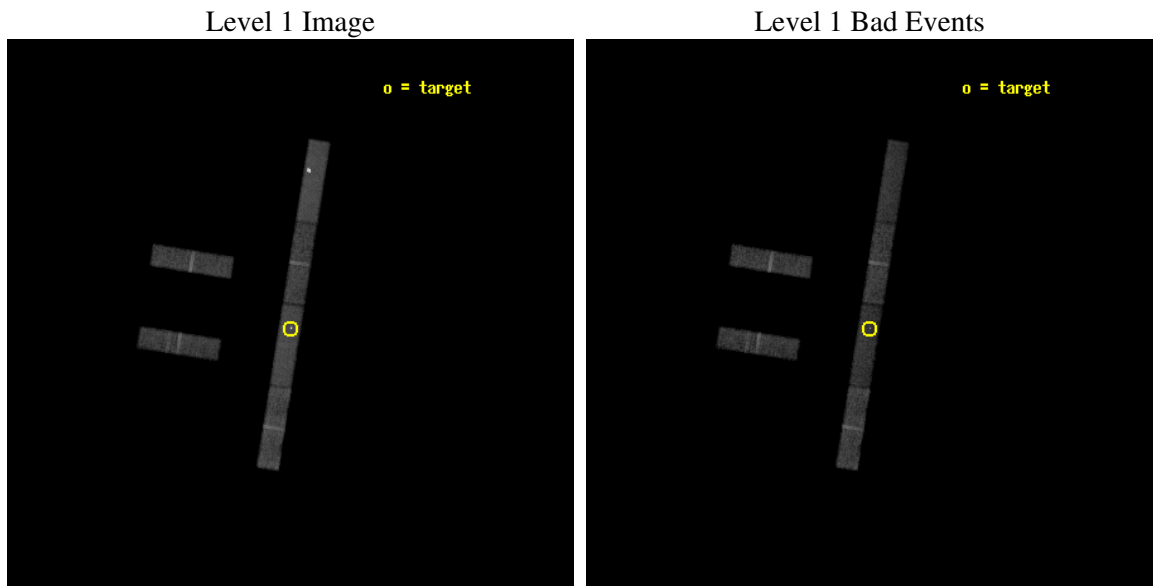
seq_num	700383
obs_id	2193
title	THE X-RAY EMISSION OF COMPOSITE GALAXIES
observer	Dr. Andreas Zezas
object	IRAS20051-1117
dtcycle	0
cycle	P
ra_targ	301.965417
dec_targ	-11.143611
ra_nom	301.96561756845
dec_nom	-11.133910549226
roll_nom	99.147695830285
revision	2
ontime	20887.899886817
livetime	20136.620868242
ontime2	20887.899886817
ontime3	20887.899886817
ontime5	20887.899886817
ontime6	20887.899886817
ontime7	20887.899886817
ontime8	20887.899886817
l2events	74884



2 OBI

2.1 OBI

2.1.1 Images

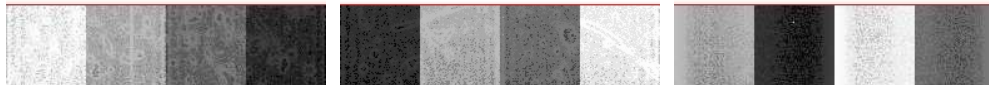


2.1.2 Bias

Chip 2

Chip 3

Chip 5



Chip 6

Chip 7

Chip 8



2.1.3 Parameters

obi_num	2
ascdsver	7.6.8.1
caldbver	3.2.3
date	2006-09-09T10:25:59
revision	2

sched_exp_time	20500.000000
ontime	20889.895957544
ontime2	20889.895937636
ontime3	20889.895937636
ontime5	20889.895937636
ontime6	20889.895937636
ontime7	20889.895957544
ontime8	20889.895937636
l1events	311192

2.1.4 Events

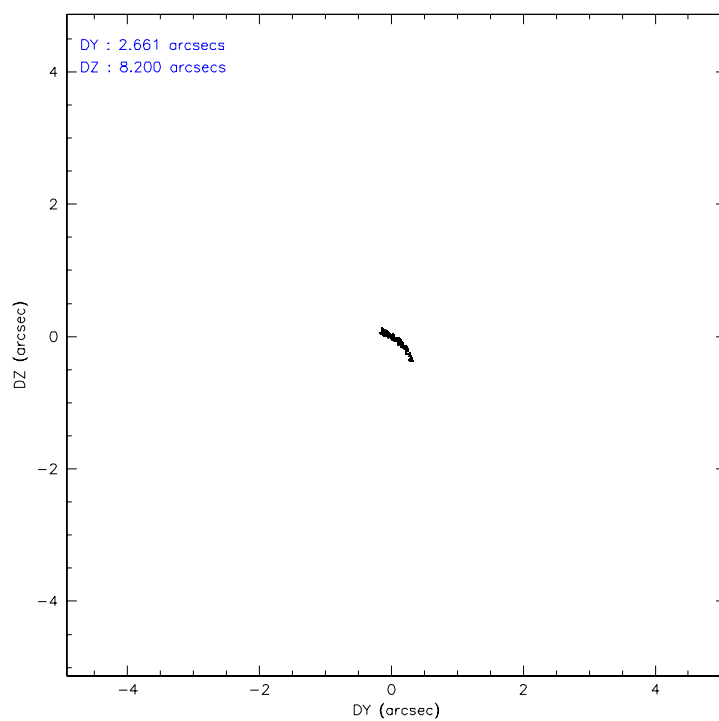
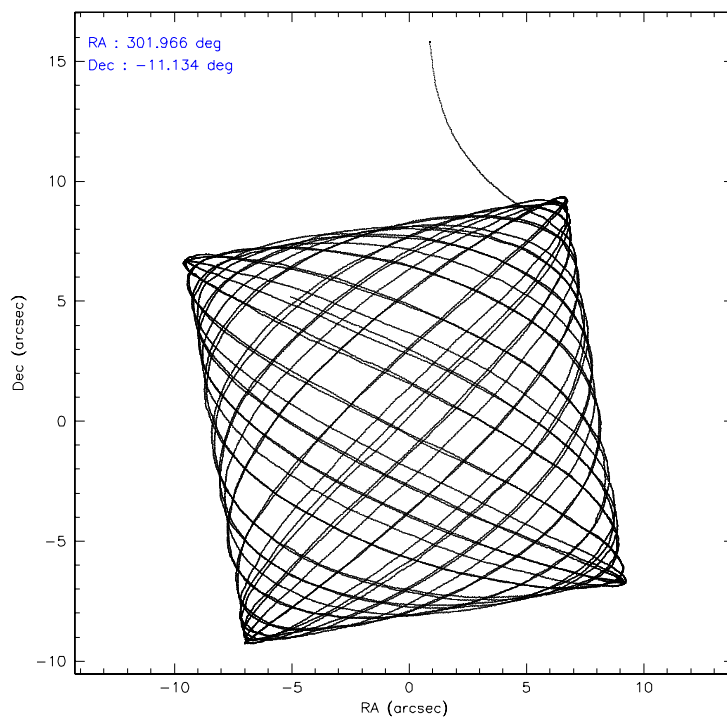
	ccd 2	ccd 3	ccd 5	ccd 6	ccd 7	ccd 8
level 1 events	43864	39590	70907	41909	60564	54358
rejected events	38819	34851	27907	36562	28341	42971
rejected %	88%	88%	39%	87%	46%	79%

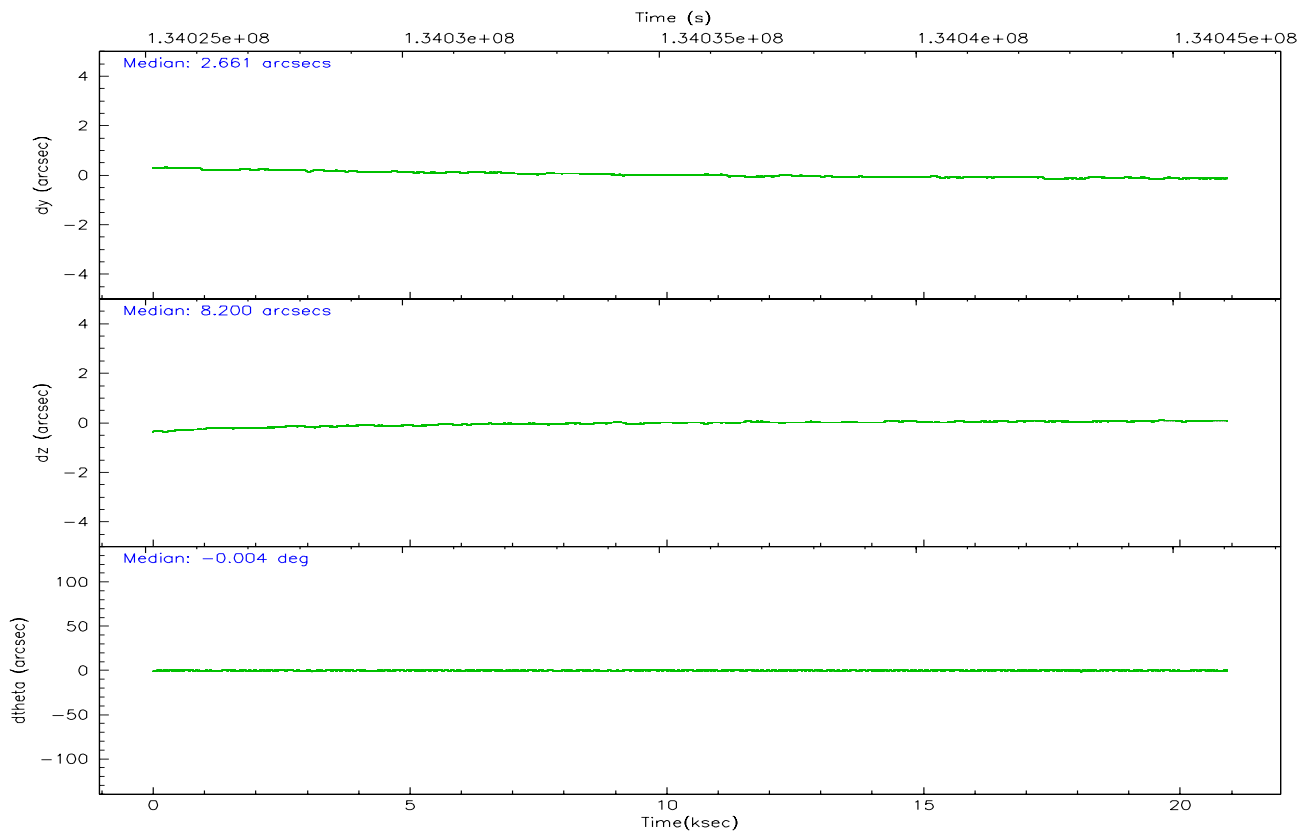
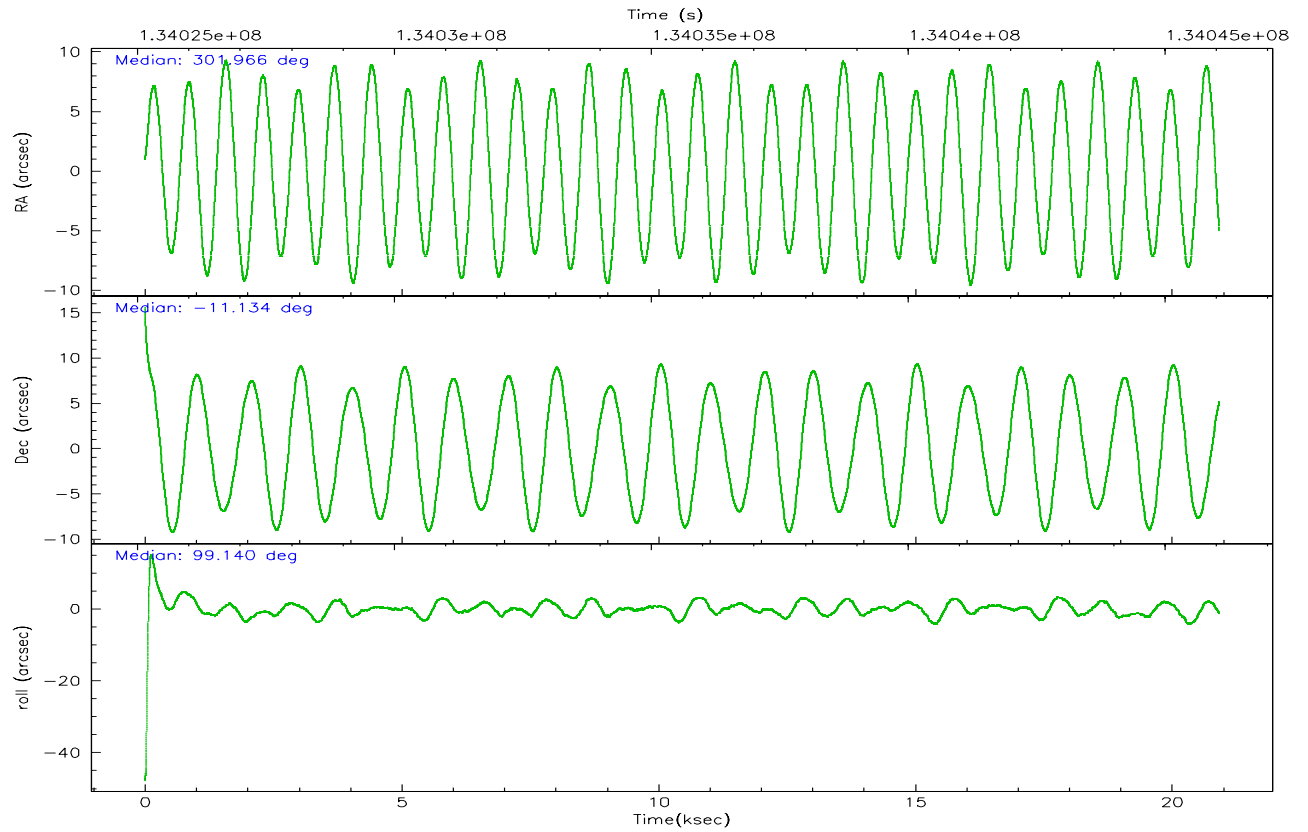
	ccd 2	ccd 3	ccd 5	ccd 6	ccd 7	ccd 8
grade 0 events	2021	1897	18287	2274	4372	3671
	4%	4%	25%	5%	7%	6%
grade 1 events	13	13	50	9	117	27
	0%	0%	0%	0%	0%	0%
grade 2 events	1011	886	8578	954	7830	2127
	2%	2%	12%	2%	12%	3%
grade 3 events	578	629	973	658	2640	1451
	1%	1%	1%	1%	4%	2%
grade 4 events	588	576	989	601	2562	1324
	1%	1%	1%	1%	4%	2%
grade 5 events	1295	1286	2609	1482	3711	1829
	2%	3%	3%	3%	6%	3%
grade 6 events	847	751	14181	860	14822	2814
	1%	1%	19%	2%	24%	5%
grade 7 events	37511	33552	25240	35071	24510	41115
	85%	84%	35%	83%	40%	75%

2.2 Compared Parameters

Parameter	Planned	Actual	Parameter	Planned	Actual
Instrument	ACIS	ACIS	Obspar format version number	6	6
Detector	ACIS-235678	ACIS-235678	Obspar file type	PREDICTED	ACTUAL
Grating	NONE	NONE	Obspar update status	NONE	UPDATED
Data mode	FAINT	FAINT	On-chip summing requested	N	N
Observation mode	POINTING	POINTING	Subarray requested	1/4	1/4
Pointing RA	301.983393	301.9656175684543	Subarray start row	0	385
Pointing Dec	-11.154831	-11.13391054922634	Subarray row count	1024	256
Pointing Roll	98.994544	99.14769583028489	Alternating exposures requested	N	N
SIM focus pos (mm)	-0.684267	-0.6828225247311905	Primary exposure time	0.000000	1.1
SIM defocus (mm)	0	0.001444936568705701			
SIM translation stage pos (mm)	-190.132523	-190.145094680475			
SIM translation stage offset (mm)	0	0.01257209746719923			
Observation start time	134025560.184000	134024457.41398			
Observation start date	2002-04-01T05:18:16	2002-04-01T05:00:57			
Observation end time	134046060.184000	134046897.22739			
Observation end date	2002-04-01T10:59:56	2002-04-01T11:14:57			
Read mode	TIMED	TIMED			

2.3 Aspect



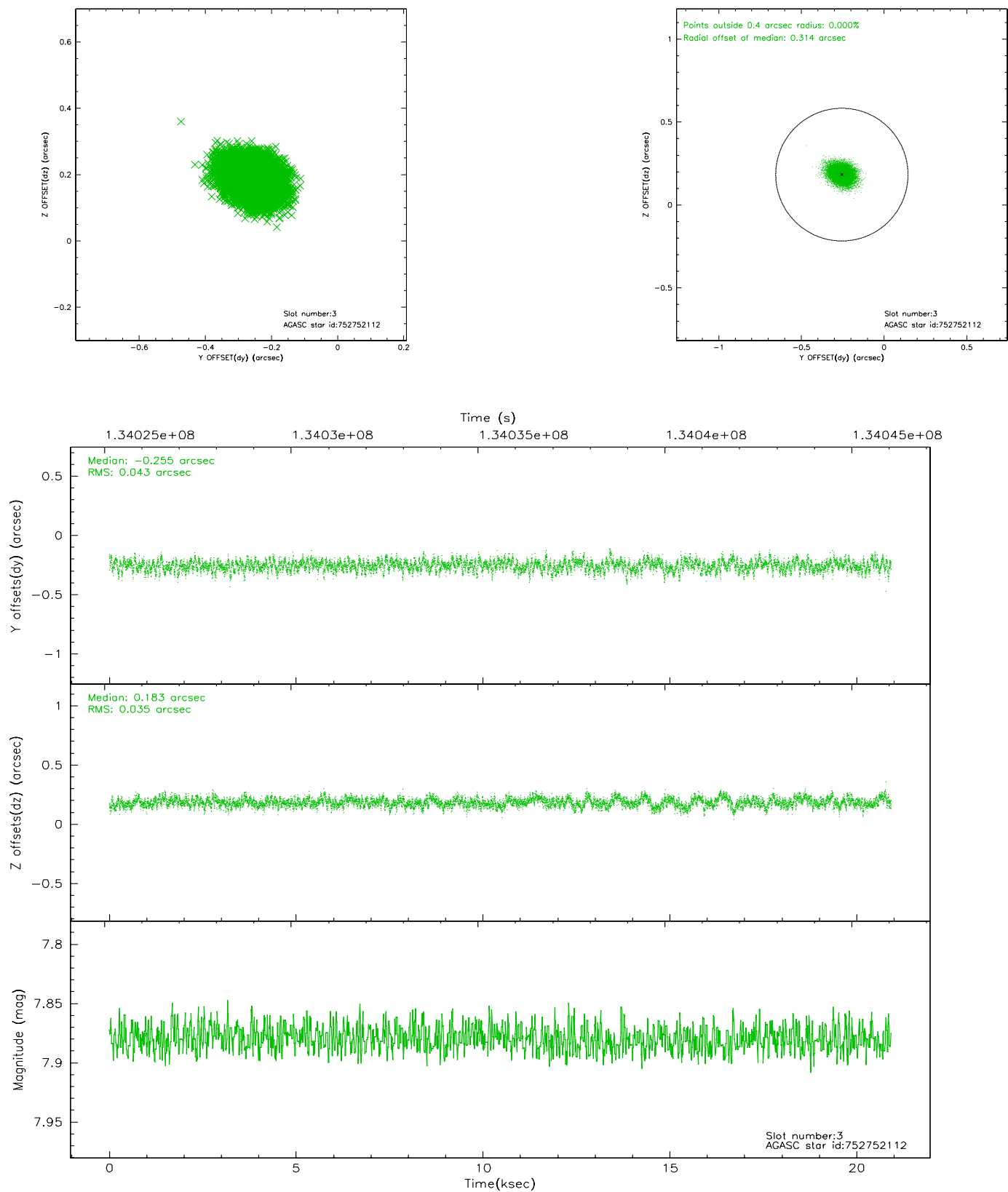


Slot Statistics

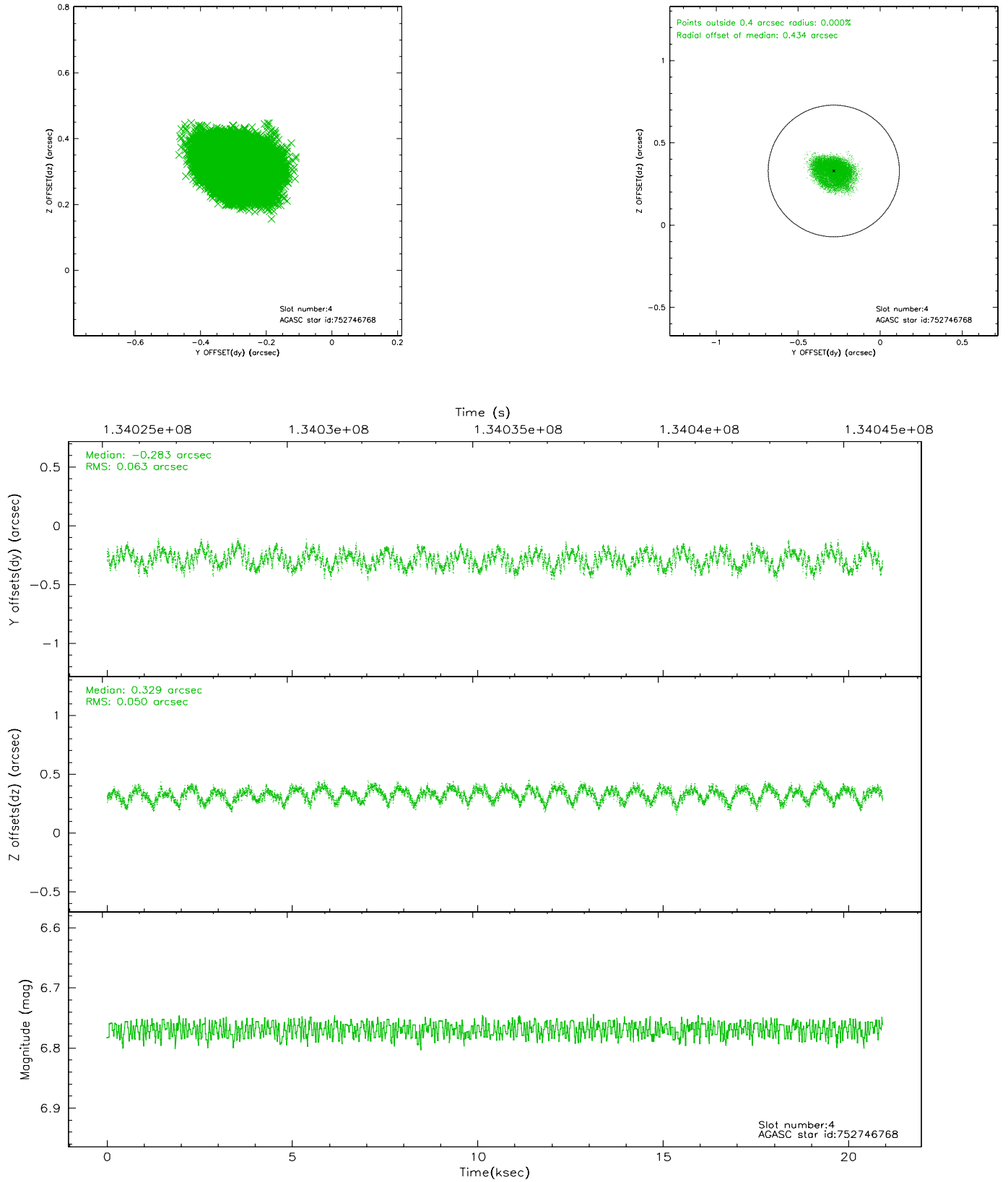
slot	status	id	mag	n_pts	med_dy	med_dz	dr1	dr2	ra	dec	mean_y	mean_z
0	FID	ACIS-S-2	7.11	5103	0.007	0.024	0.007	0.011	0.000000	0.000000	-755.33	-1729.23
1	FID	ACIS-S-4	7.20	5100	-0.096	-0.010	0.006	0.012	0.000000	0.000000	2157.78	179.02
2	FID	ACIS-S-5	7.24	5100	0.057	-0.006	0.008	0.015	0.000000	0.000000	-1807.88	172.92
3	GUIDE	752752112	7.88	10199	-0.255	0.183	0.059	0.096	302.291170	-10.507260	2131.40	-1440.06
4	GUIDE	752746768	6.77	10204	-0.283	0.329	0.089	0.132	302.529249	-10.536803	1893.70	-2255.56
5	GUIDE	753288872	9.26	10201	0.330	0.077	0.103	0.167	302.217798	-11.669719	-1960.06	-526.93
6	GUIDE	752751120	9.63	10196	-0.125	-0.384	0.150	0.238	301.276188	-10.893809	1315.17	2322.58
7	GUIDE	753283928	9.35	10197	0.342	-0.193	0.073	0.118	301.916530	-11.734610	-2024.64	558.79

2.4 Star Slots

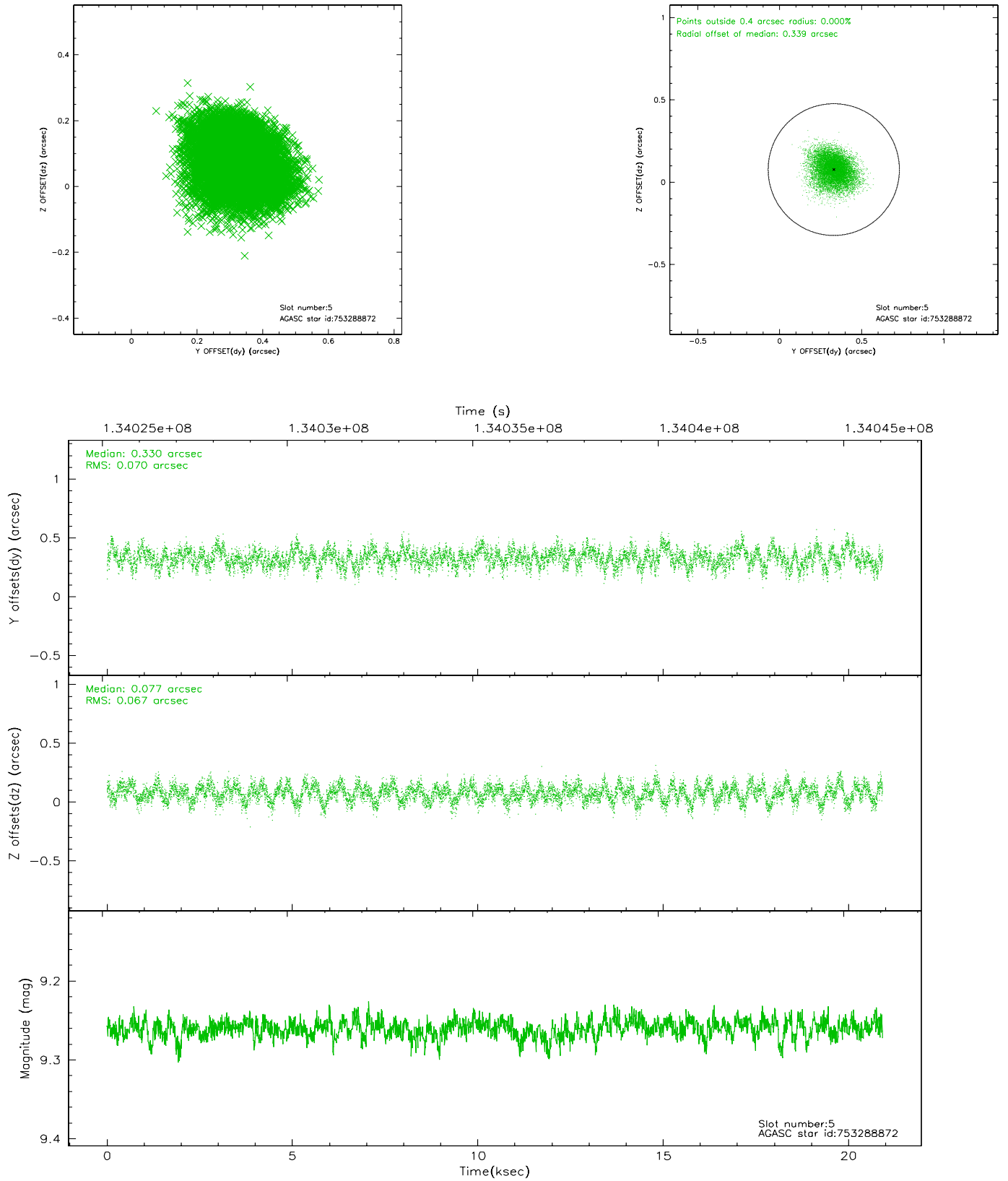
2.4.1 Slot 3



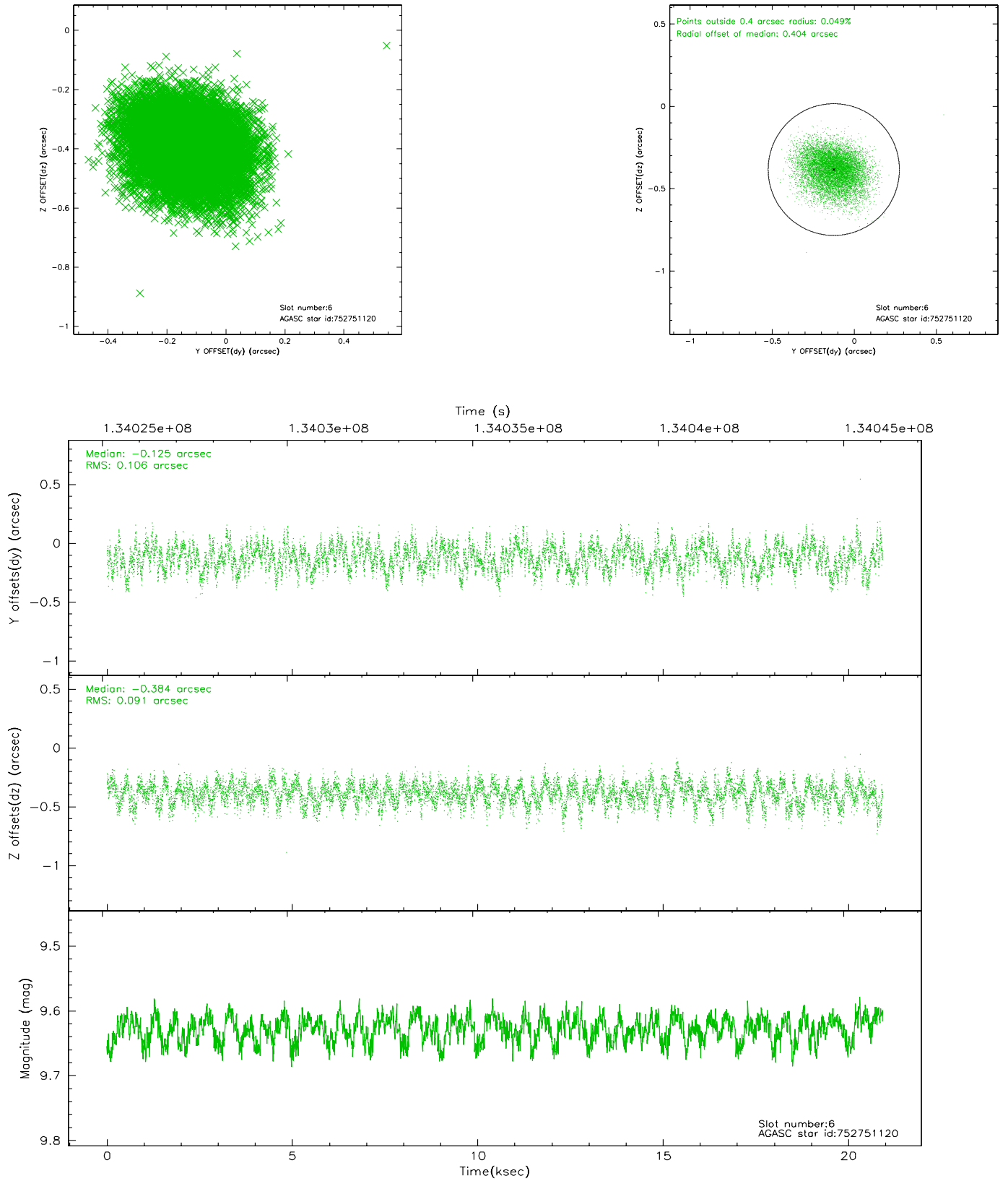
2.4.2 Slot 4



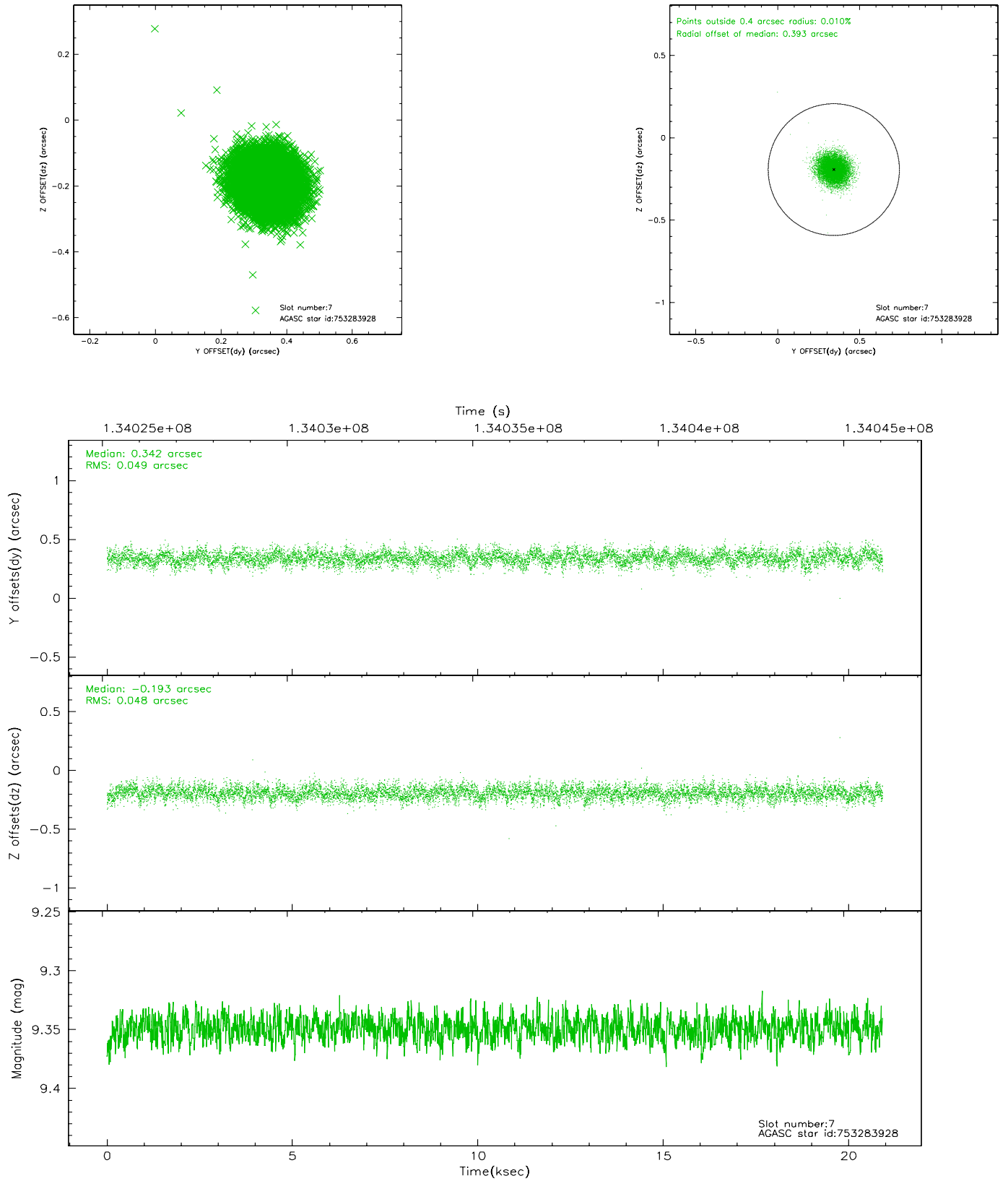
2.4.3 Slot 5



2.4.4 Slot 6

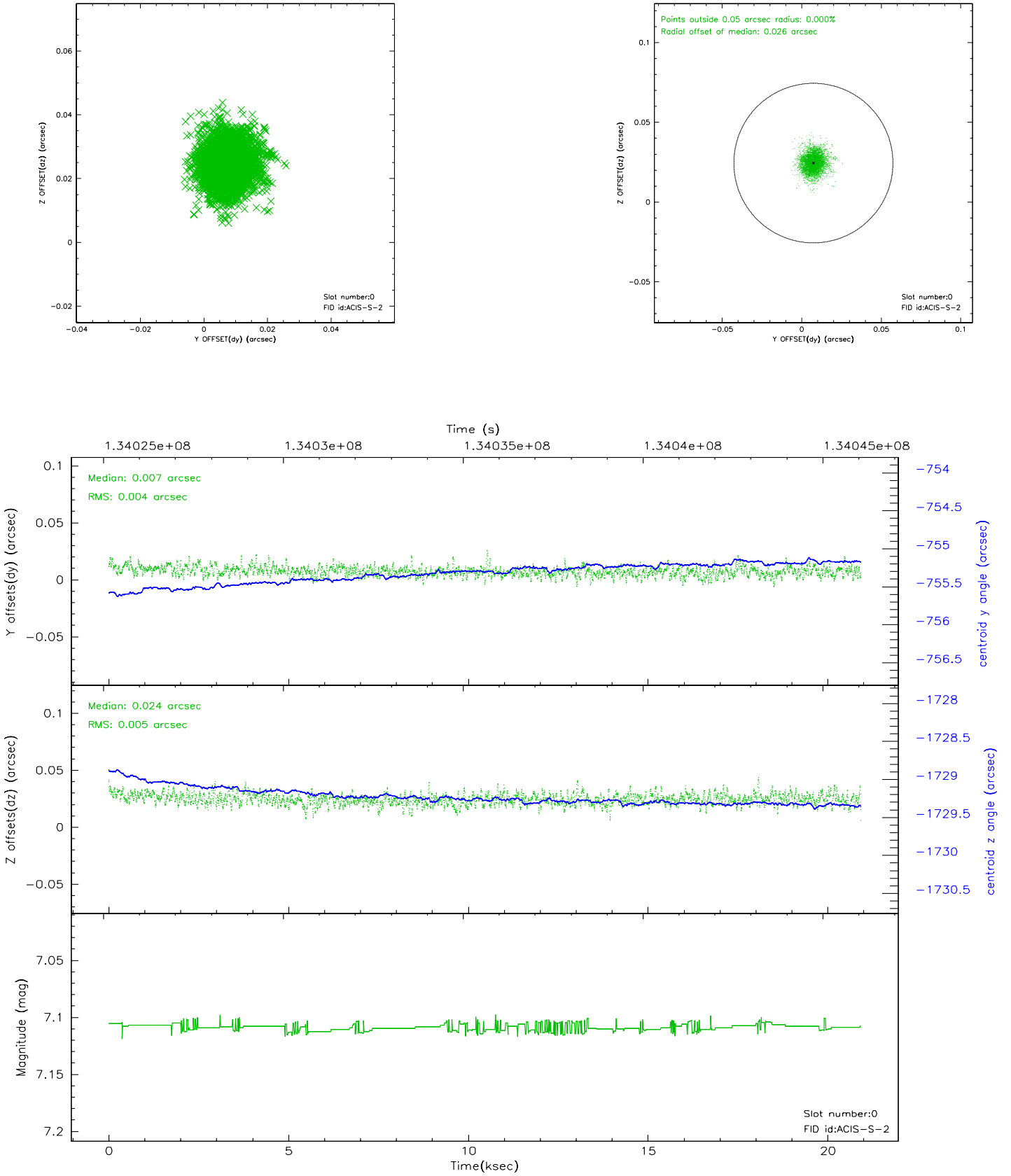


2.4.5 Slot 7

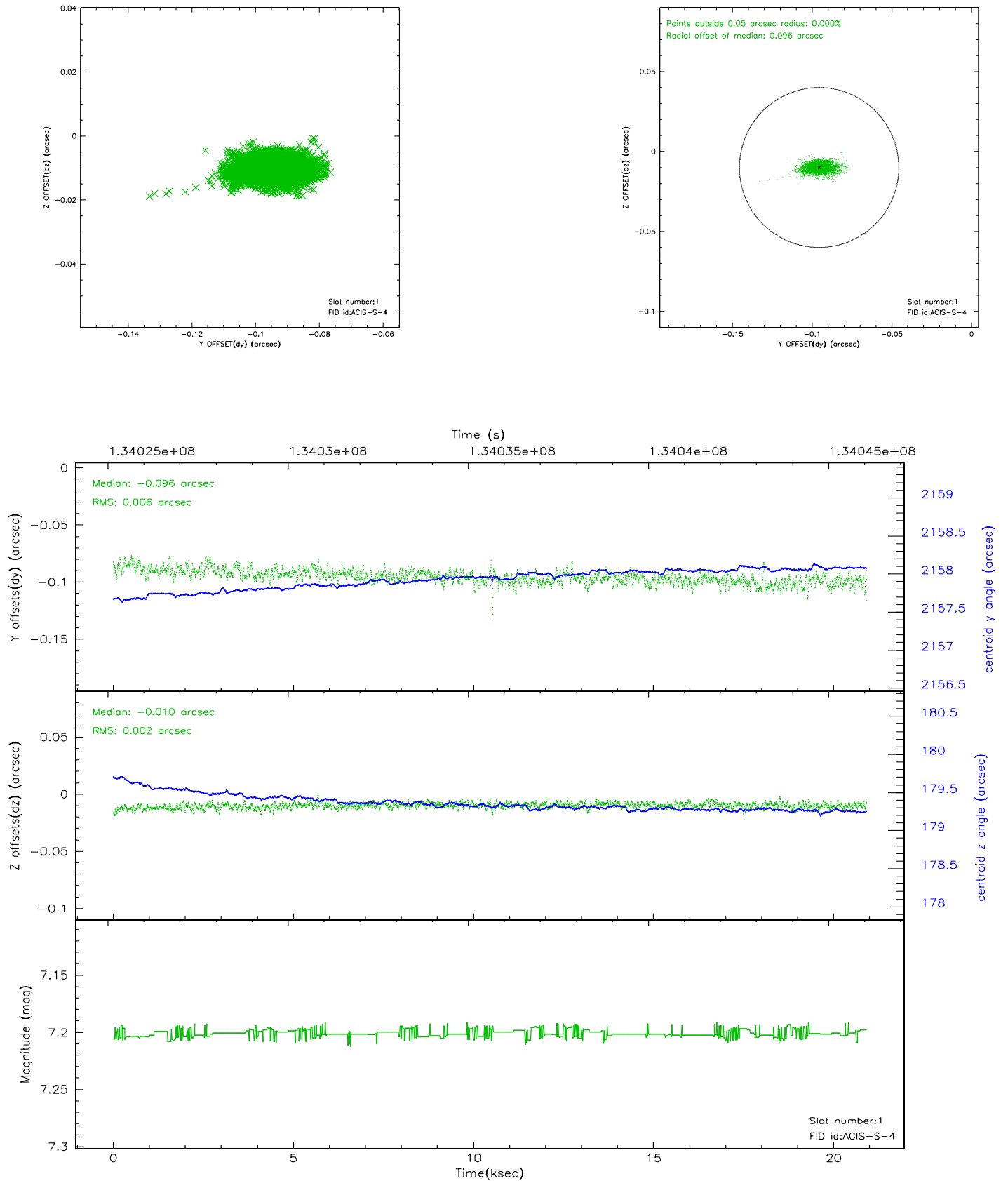


2.5 FID Slots

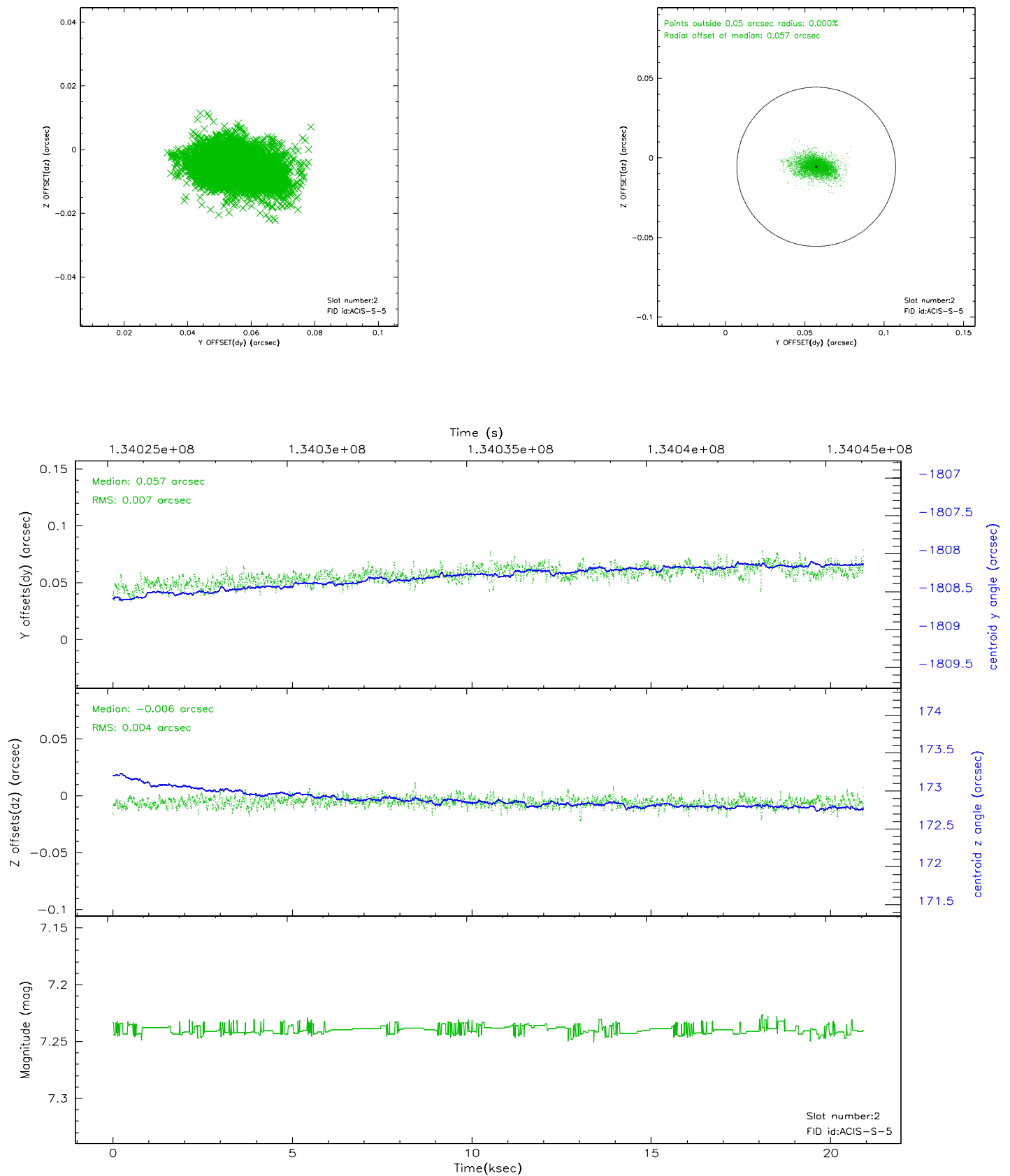
2.5.1 Slot 0



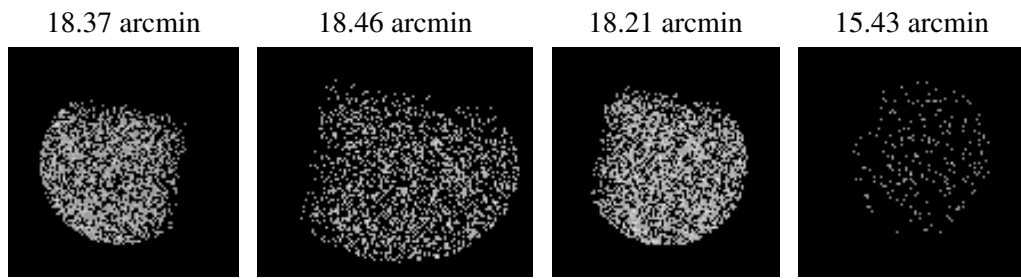
2.5.2 Slot 1



2.5.3 Slot 2



3 Point Sources



A Summary

A.1 Status

V&V Scientist	Jen Lauer
V&V Date (YYYY-MM-DD)	2006.09.10
V&V Edition	1
V&V Disposition and Status	OK
V&V Charge Time	20.888

A.2 Comments