

V&V Reference Report

L2 ASCDS Version : 8.4.5

Observation 1843 - L2 Version 3
Chandra X-Ray Center

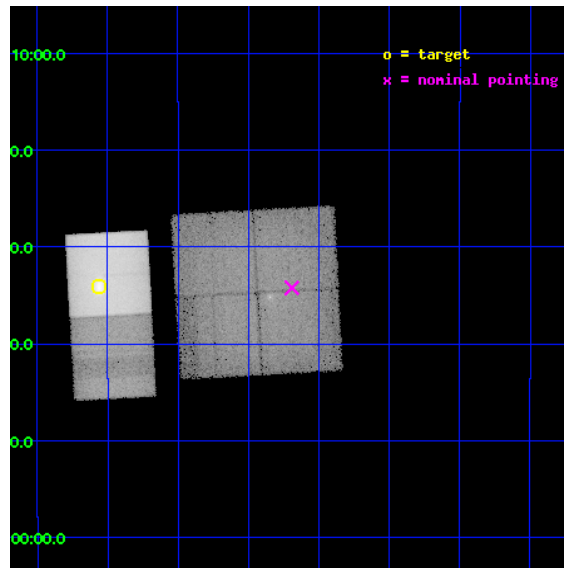
L2 Processing Date : Sep 1 2012

Contents

1	Front	2
2	OBI	3
2.1	OBI	3
2.1.1	Images	3
2.1.2	Bias	3
2.1.3	Parameters	4
2.1.4	Events	4
2.2	Compared Parameters	5
2.3	Aspect	6
2.4	Star Slots	9
2.4.1	Slot 3	9
2.4.2	Slot 4	10
2.4.3	Slot 5	11
2.4.4	Slot 6	12
2.4.5	Slot 7	13
2.5	FID Slots	14
2.5.1	Slot 0	14
2.5.2	Slot 1	15
2.5.3	Slot 2	16
A	Summary	17
A.1	Status	17
A.2	Comments	17

1 Front

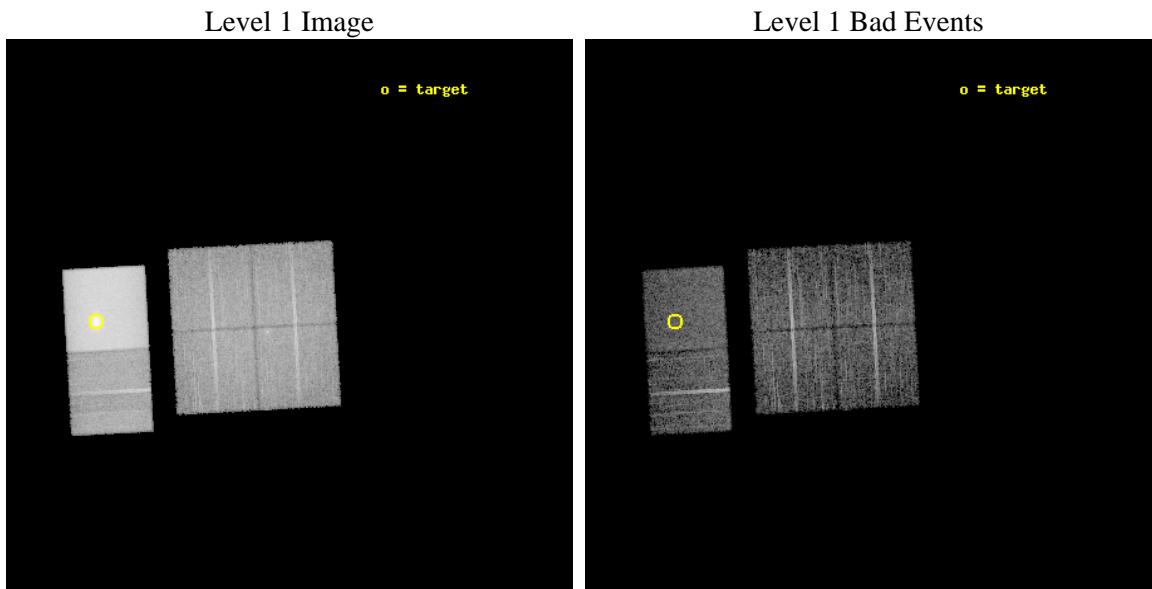
seq_num	590223	Sequence number
obs_id	1843	Observation id
title	HRC RESPONSE TO CONTINUUM SOURCE.	Proposal title
observer	Dr. CXC Calibration	Principal investigator
object	G21.5-0.9 [Chip S3, T=120, Offsets=-1,20,-4]	Source name
dtcycle	0	
cycle	P	events from which exps? Prim/Second/Both
ra_targ	278.389583	Observer's specified target RA [deg]
dec_targ	-10.568528	Observer's specified target Dec [deg]
ra_nom	278.04787065101	Nominal RA [deg]
dec_nom	-10.57039625623	Nominal Dec [deg]
roll_nom	266.87172757061	Nominal Roll [deg]
revision	3	Processing version of data
ontime	7955.200007394	Sum of GTIs [s]
livetime	7854.466474854	Livetime [s]
ontime0	7955.200007394	Sum of GTIs [s]
ontime1	7955.200007394	Sum of GTIs [s]
ontime2	7955.200007394	Sum of GTIs [s]
ontime3	7951.9590471536	Sum of GTIs [s]
ontime6	7955.200007394	Sum of GTIs [s]
ontime7	7955.200007394	Sum of GTIs [s]
l2events	490794	Number of level 2 events



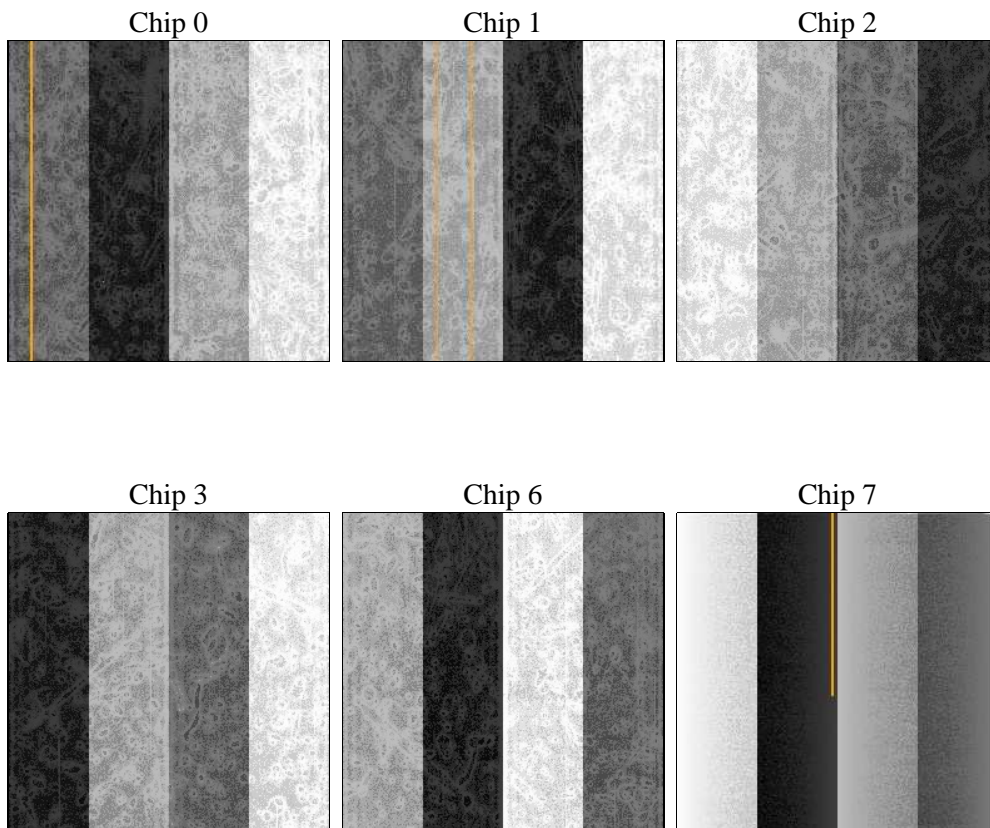
2 OBI

2.1 OBI

2.1.1 Images



2.1.2 Bias



2.1.3 Parameters

obi_num	0	Obi number	sched_exp_time	8000.000000	[s] Scheduled observation exposure time
ascdsver	8.4.5	Processing system revision	ontime	7955.200007394	Sum of GTIs [s]
caldsver	4.5.1.1	 	ontime0	7955.200007394	Sum of GTIs [s]
date	2012-09-01T03:50:18	Date and time of file creation	ontime1	7955.200007394	Sum of GTIs [s]
revision	3	Processing version of data	ontime2	7955.200007394	Sum of GTIs [s]
			ontime3	7951.9590471536	Sum of GTIs [s]
			ontime6	7955.200007394	Sum of GTIs [s]
			ontime7	7955.200007394	Sum of GTIs [s]
			l1events	759286	Number of level 1 events

2.1.4 Events

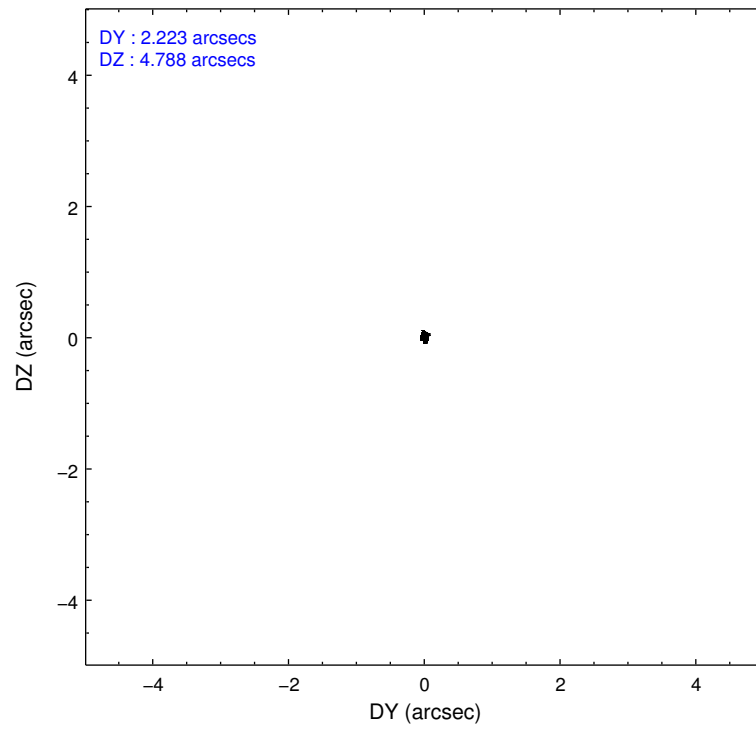
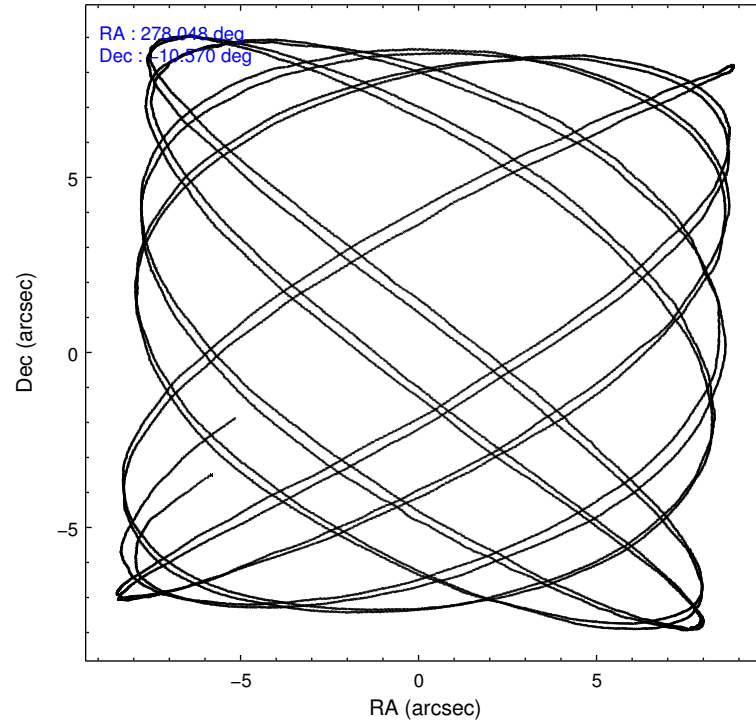
	ccd 0	ccd 1	ccd 2	ccd 3	ccd 6	ccd 7		ccd 0	ccd 1	ccd 2	ccd 3	ccd 6	ccd 7
level 1 events	72027	74429	76165	76587	96405	363673	grade 0 events	25102	24911	23314	23995	40972	37923
rejected events	38244	40162	44421	43915	43966	42441		34%	33%	30%	31%	42%	10%
rejected %	53%	53%	58%	57%	45%	11%	grade 1 events	79	91	100	105	148	99
								0%	0%	0%	0%	0%	0%
							grade 2 events	4760	5132	4757	4847	6868	56830
								6%	6%	6%	6%	7%	15%
							grade 3 events	1087	1227	993	1105	1319	25190
								1%	1%	1%	1%	1%	6%
							grade 4 events	1076	1160	1037	1097	1282	24624
								1%	1%	1%	1%	1%	6%
							grade 5 events	1638	1818	1622	1811	2089	7406
								2%	2%	2%	2%	2%	2%
							grade 6 events	1776	1851	1656	1648	2015	176844
								2%	2%	2%	2%	2%	48%
							grade 7 events	36509	38239	42686	41979	41712	34757
								50%	51%	56%	54%	43%	9%

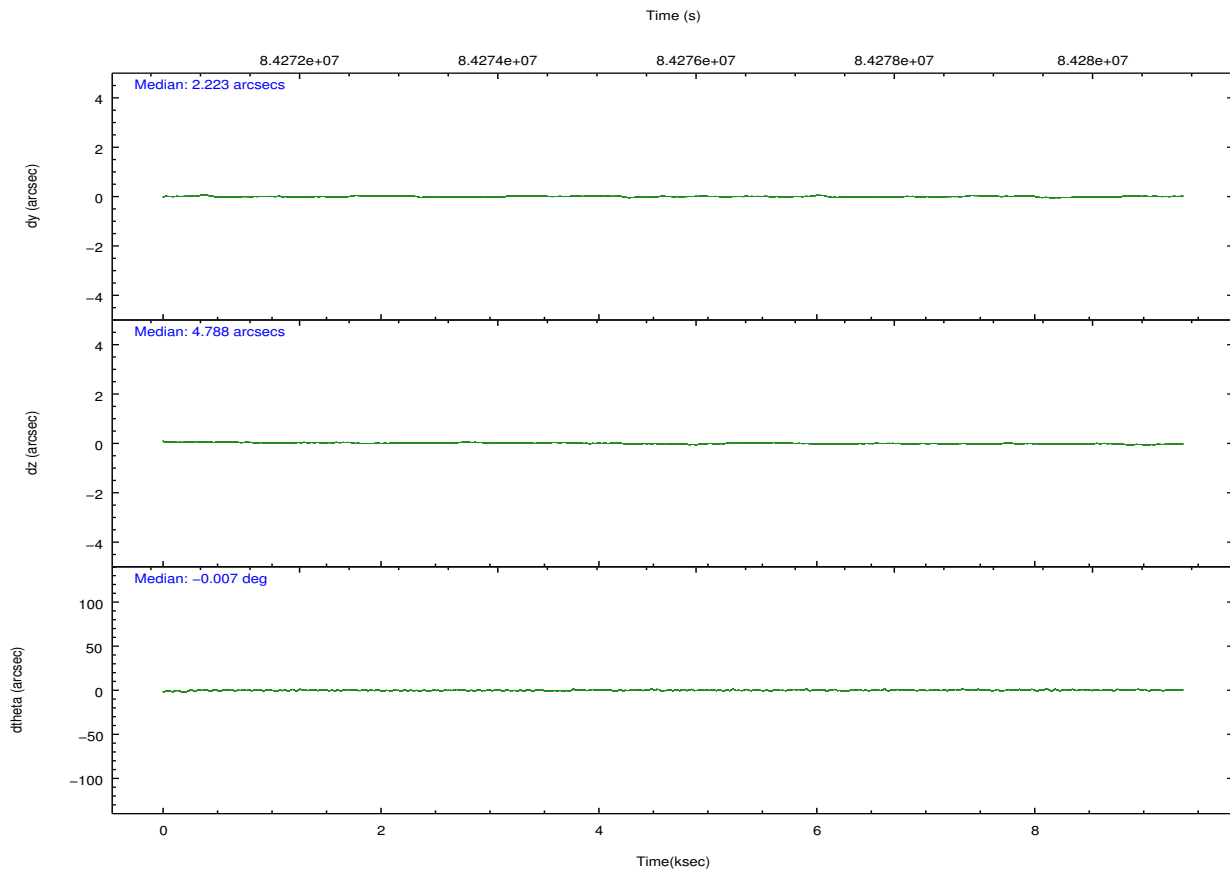
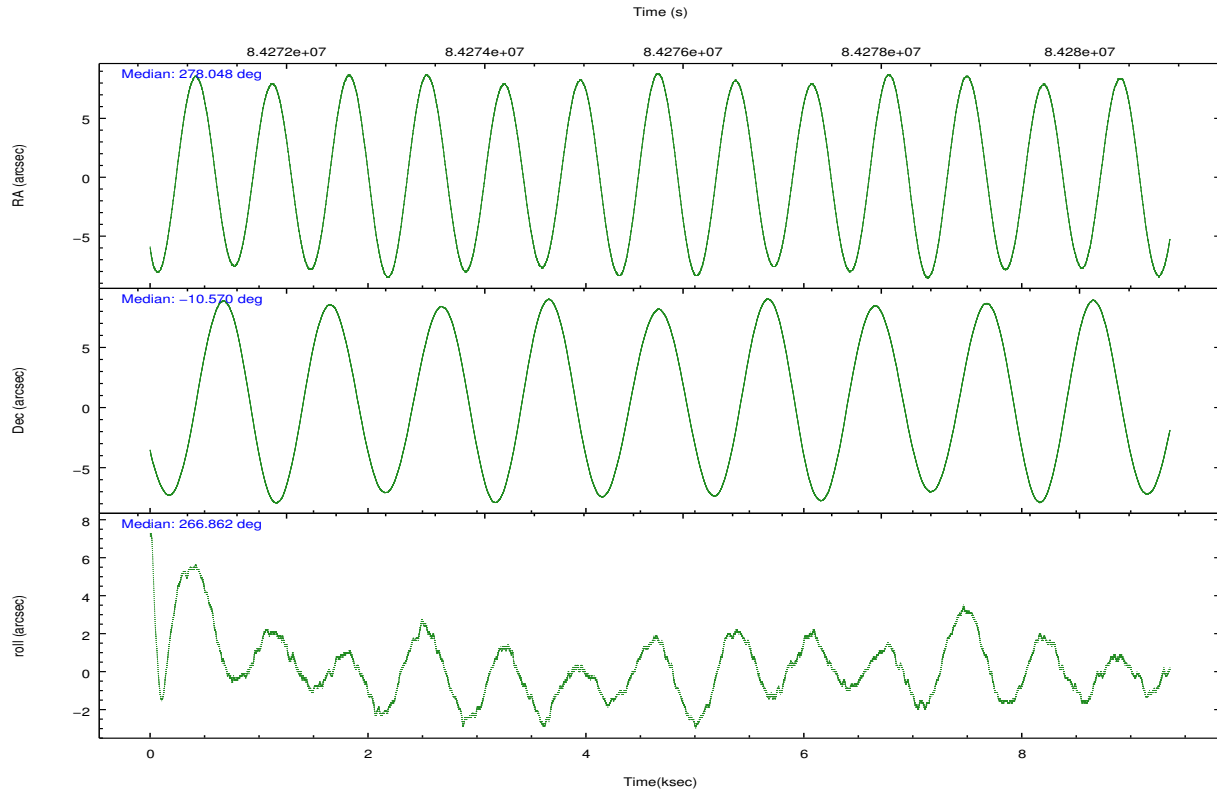
2.2 Compared Parameters

Parameter	Planned	Actual
Instrument	ACIS	ACIS
Detector	ACIS-012367	ACIS-012367
Grating	NONE	NONE
Data mode	FAINT	FAINT
Observation mode	POINTING	POINTING
[deg] Pointing RA	278.035324	278.0478706510092
[deg] Pointing Dec	-10.545733	-10.57039625622962
[deg] Pointing Roll	266.660740	266.8717275706067
[mm] SIM focus pos	-0.782348	-0.7809083437167272
[mm] SIM defocus	0	0.001439871863259334
[mm] SIM translation stage pos	-245.865463	-245.8572931324415
[mm] SIM translation stage offset	12.273	12.26484012951181
[s] Observation start time (MET)	84272448.184000	84270902.16850001
Observation start date	2000-09-02T08:59:44	2000-09-02T08:35:02
[s] Observation end time (MET)	84280448.184000	84280645.818866
Observation end date	2000-09-02T11:13:04	2000-09-02T11:17:25
Read mode	TIMED	TIMED

Parameter	Planned	Actual
Obspar format version number	7	7
Obspar file type	PREDICTED	ACTUAL
Obspar update status	NONE	UPDATED
Number of optional ACIS chips dropped	0	0
On-chip summing requested	N	N
Subarray requested	NONE	NONE
Alternating exposures requested	N	N
[s] Primary exposure time	0.000000	3.2

2.3 Aspect



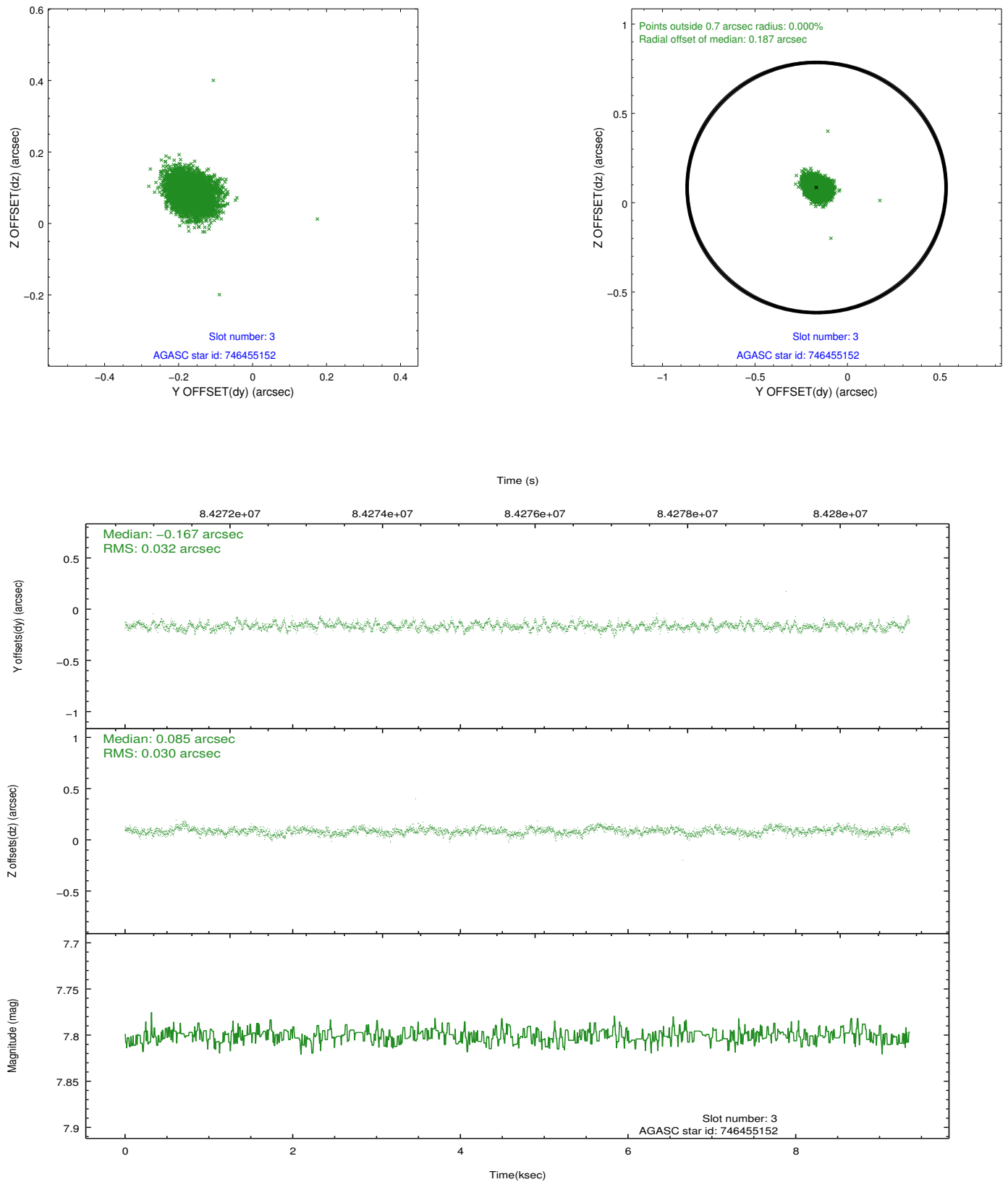


Slot Statistics

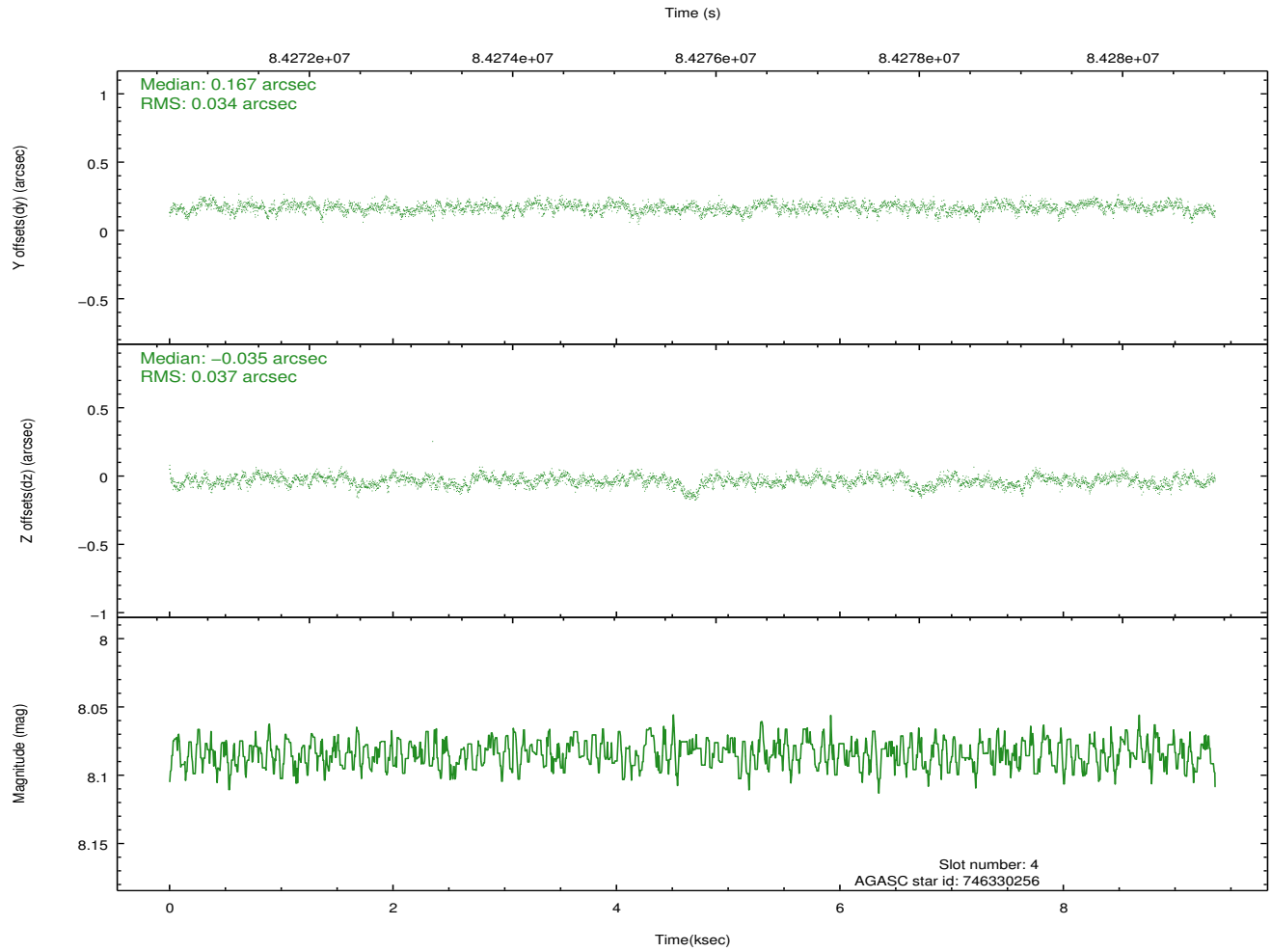
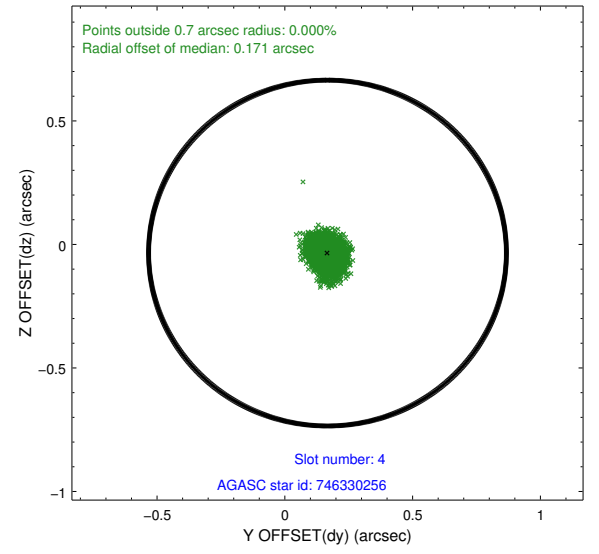
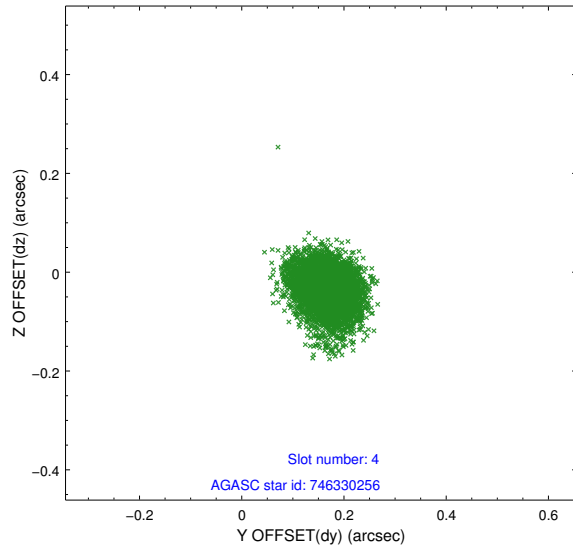
slot	status	id	mag	n_pts	med_dy	med_dz	dr1	dr2	ra	dec	mean_y	mean_z
0	FID	ACIS-I-2	7.21	2283	-0.015	-0.088	0.009	0.016	0.000000	0.000000	-755.67	-584.23
1	FID	ACIS-I-4	7.26	2283	-0.009	0.041	0.006	0.012	0.000000	0.000000	2158.04	1322.21
2	FID	ACIS-I-5	7.24	2283	-0.076	0.115	0.009	0.014	0.000000	0.000000	-1809.61	1322.03
3	GUIDE	746455152	7.80	4567	-0.167	0.085	0.046	0.076	278.447893	-9.976732	-2128.85	1341.32
4	GUIDE	746330256	8.08	4567	0.167	-0.035	0.053	0.087	277.634401	-10.863955	1227.84	-1347.35
5	GUIDE	746462456	8.40	4567	-0.076	0.141	0.080	0.126	278.652171	-10.530173	-180.27	2176.72
6	GUIDE	746455112	8.92	4566	0.169	-0.116	0.072	0.122	278.266531	-10.703234	519.43	850.49
7	GUIDE	746338464	9.45	4565	-0.095	-0.074	0.102	0.168	277.427613	-10.292647	-780.99	-2201.40

2.4 Star Slots

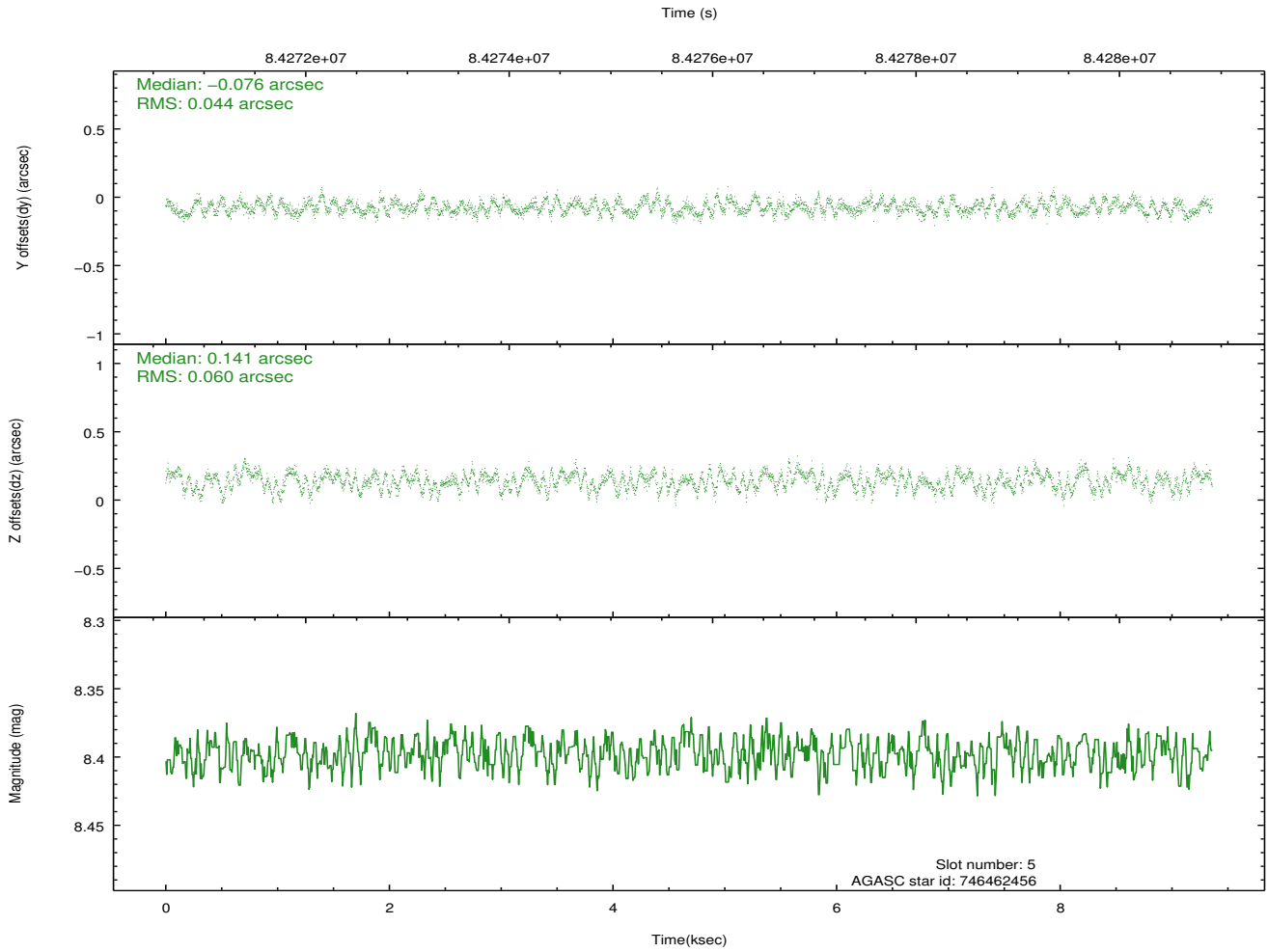
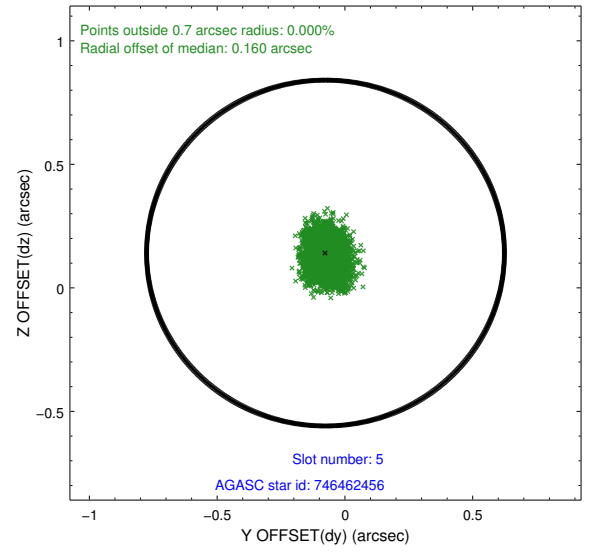
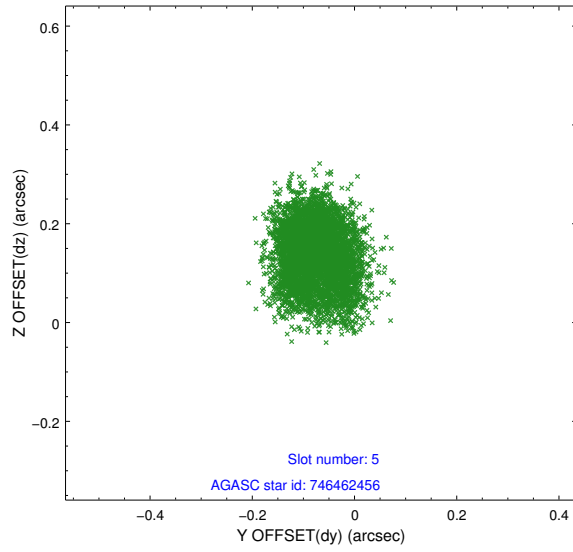
2.4.1 Slot 3



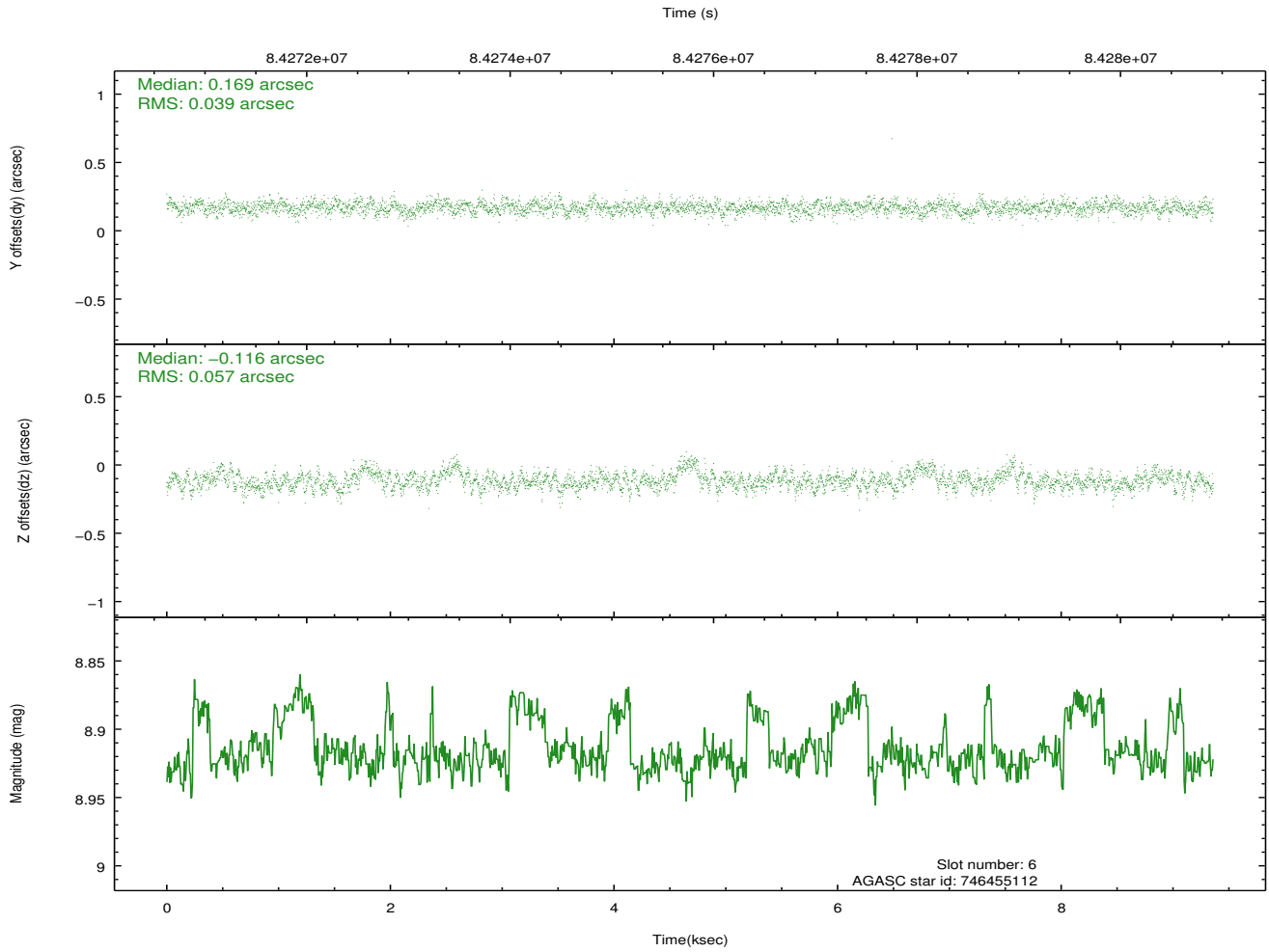
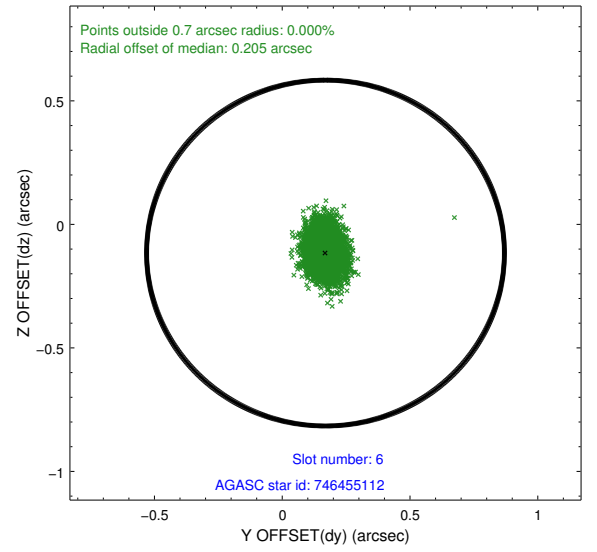
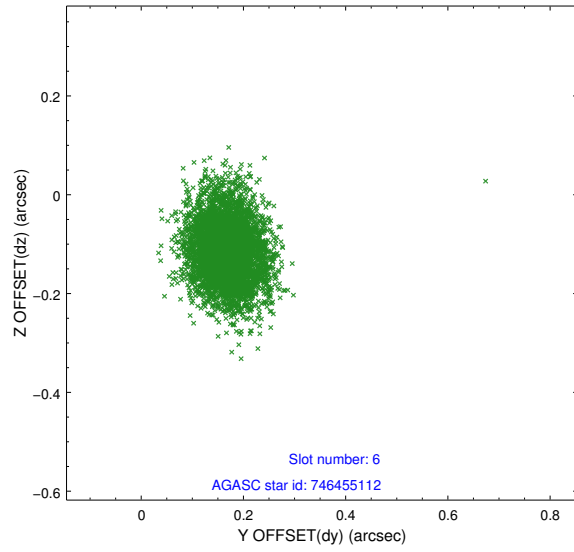
2.4.2 Slot 4



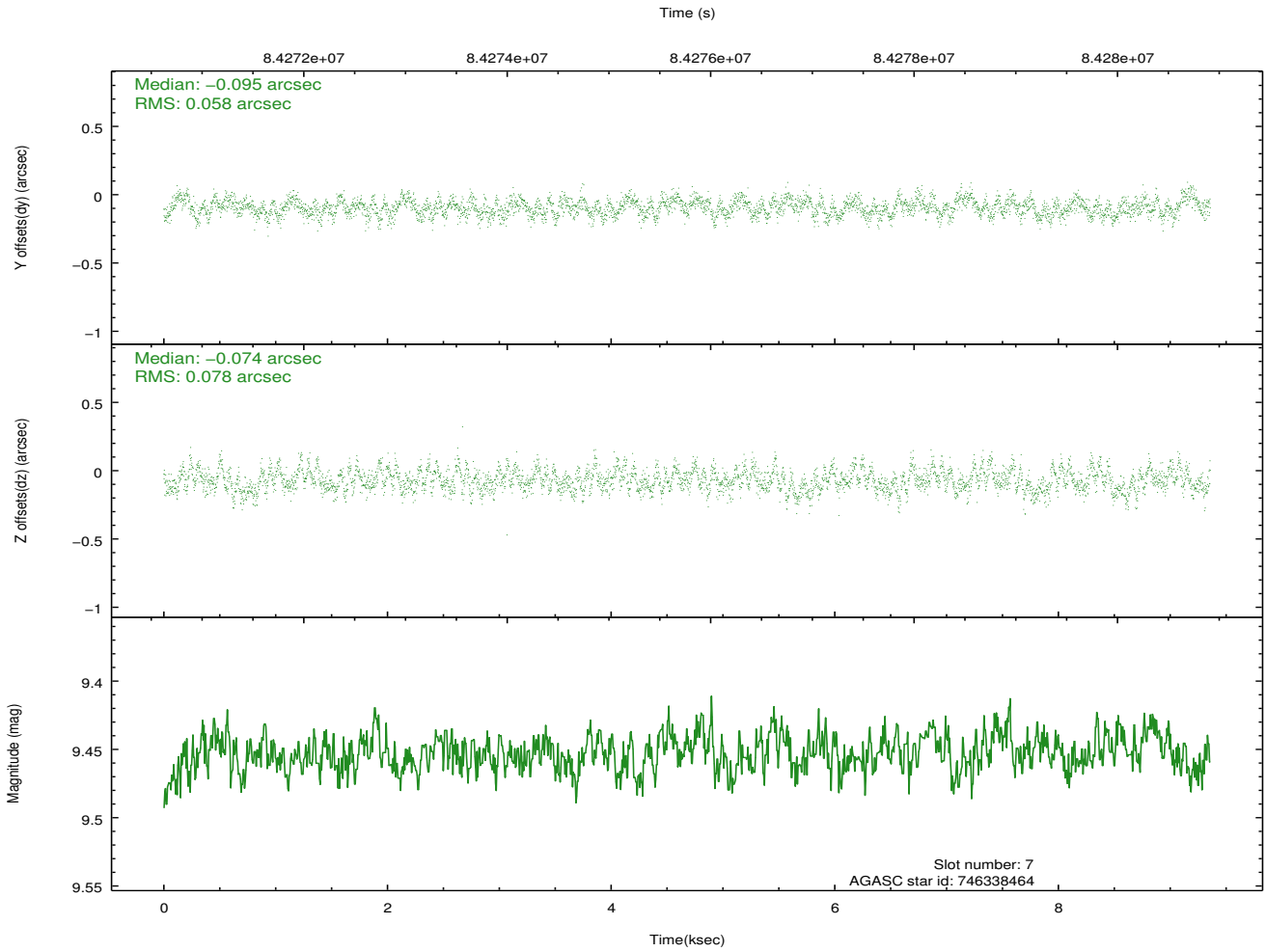
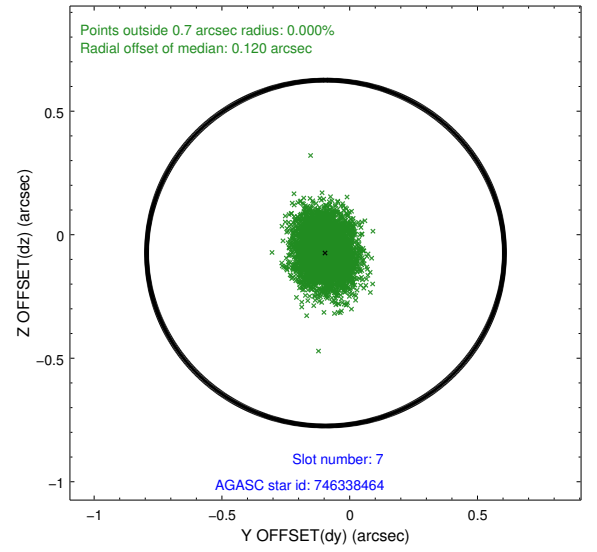
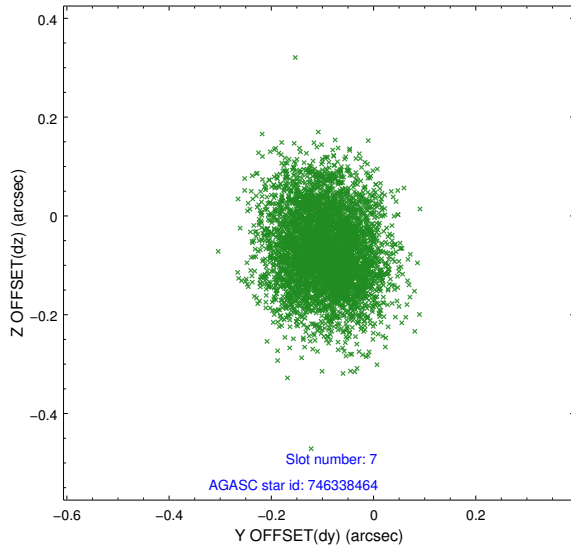
2.4.3 Slot 5



2.4.4 Slot 6

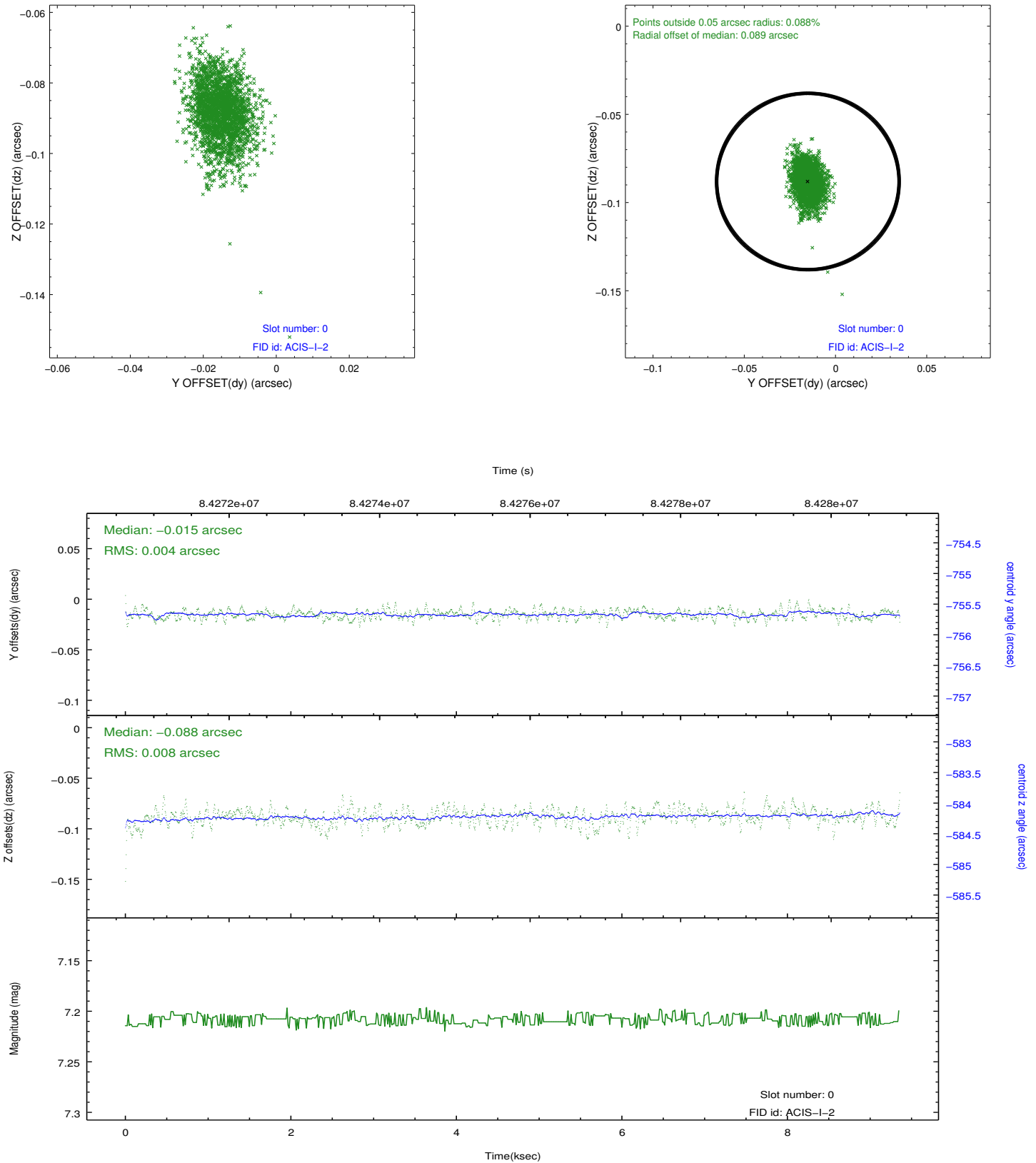


2.4.5 Slot 7

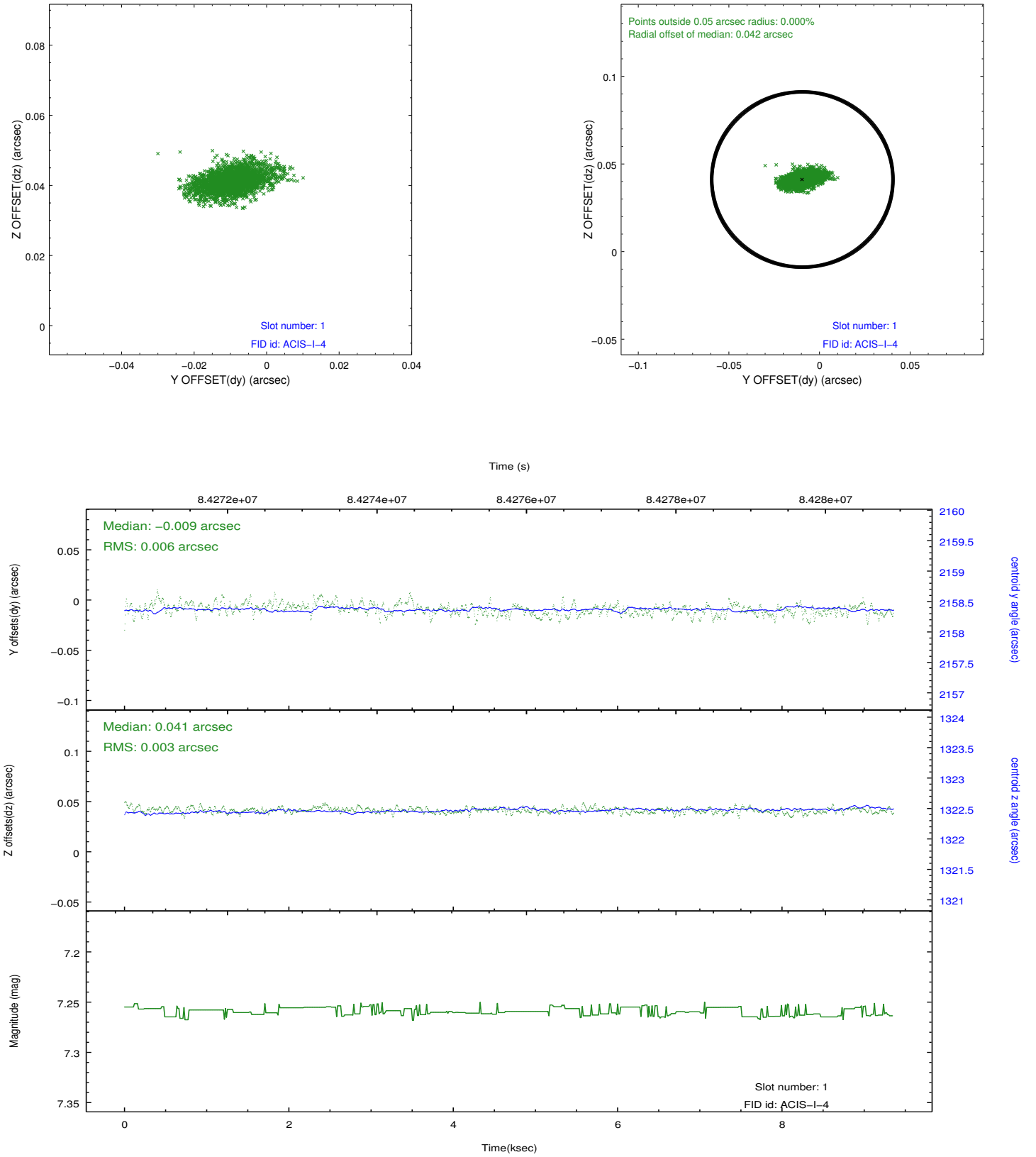


2.5 FID Slots

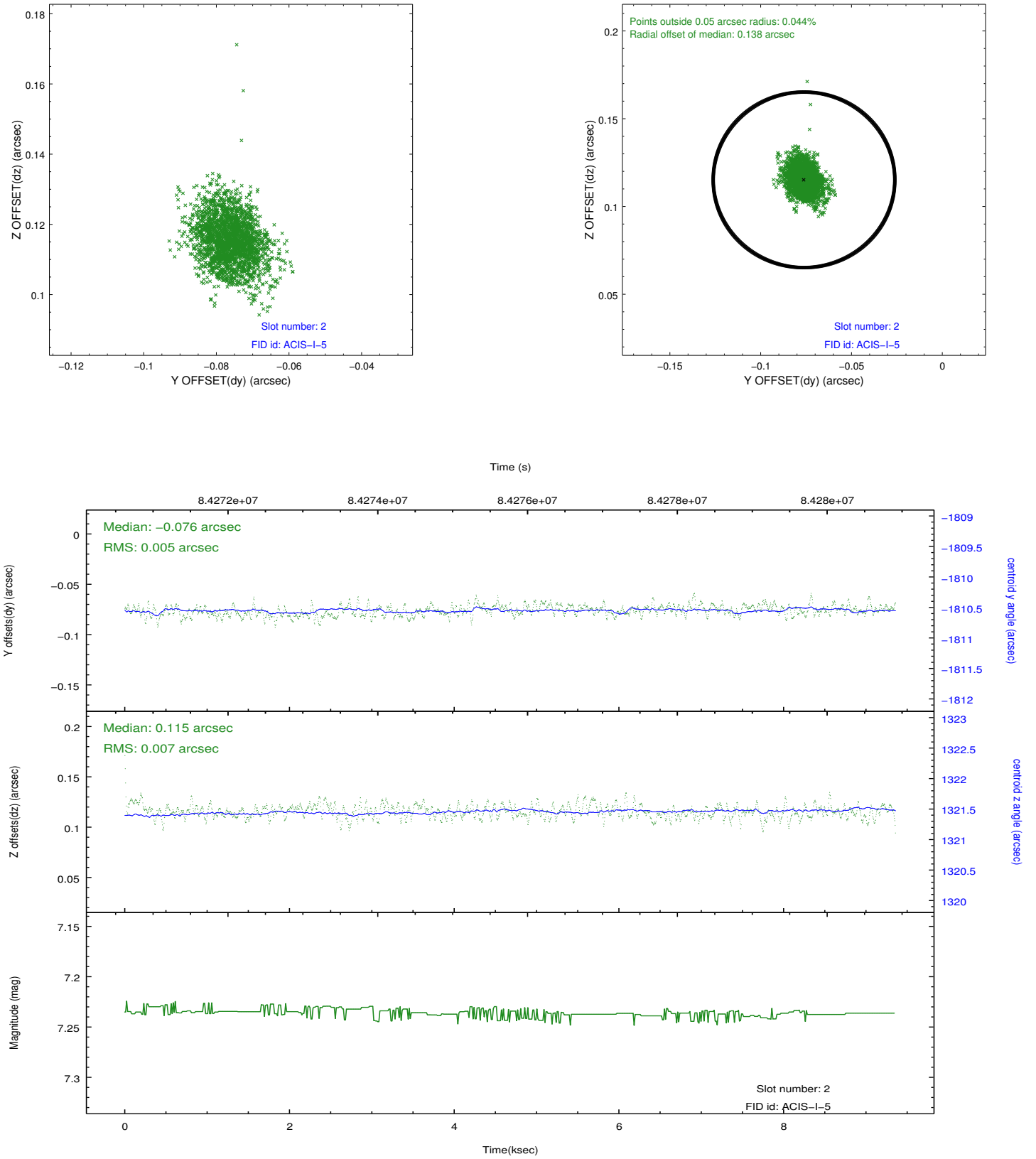
2.5.1 Slot 0



2.5.2 Slot 1



2.5.3 Slot 2



A Summary

A.1 Status

V&V Scientist	Jen Lauer
V&V Date (YYYY-MM-DD)	2012.09.06
V&V Edition	1
V&V Disposition and Status	OK
V&V Charge Time	7.958

A.2 Comments